

Data Path : Z:\voasrv\HPCHEM1\MSVOA_N\Data\VN010324\
 Data File : VN080641.D
 Acq On : 03 Jan 2024 15:43
 Operator : JC\MD
 Sample : 06045-02
 Misc : 5.0mL/MSVOA_N/WATER
 ALS Vial : 11 Sample Multiplier: 1

Instrument :
 MSVOA_N
 ClientSampleId :

Quant Time: Jan 04 02:00:54 2024
 Quant Method : Z:\voasrv\HPCHEM1\MSVOA_N\methods\82N122723W.M
 Quant Title : SW846 8260
 QLast Update : Thu Dec 28 03:07:01 2023
 Response via : Initial Calibration

Compound	R.T.	QIon	Response	Conc	Units	Dev(Min)

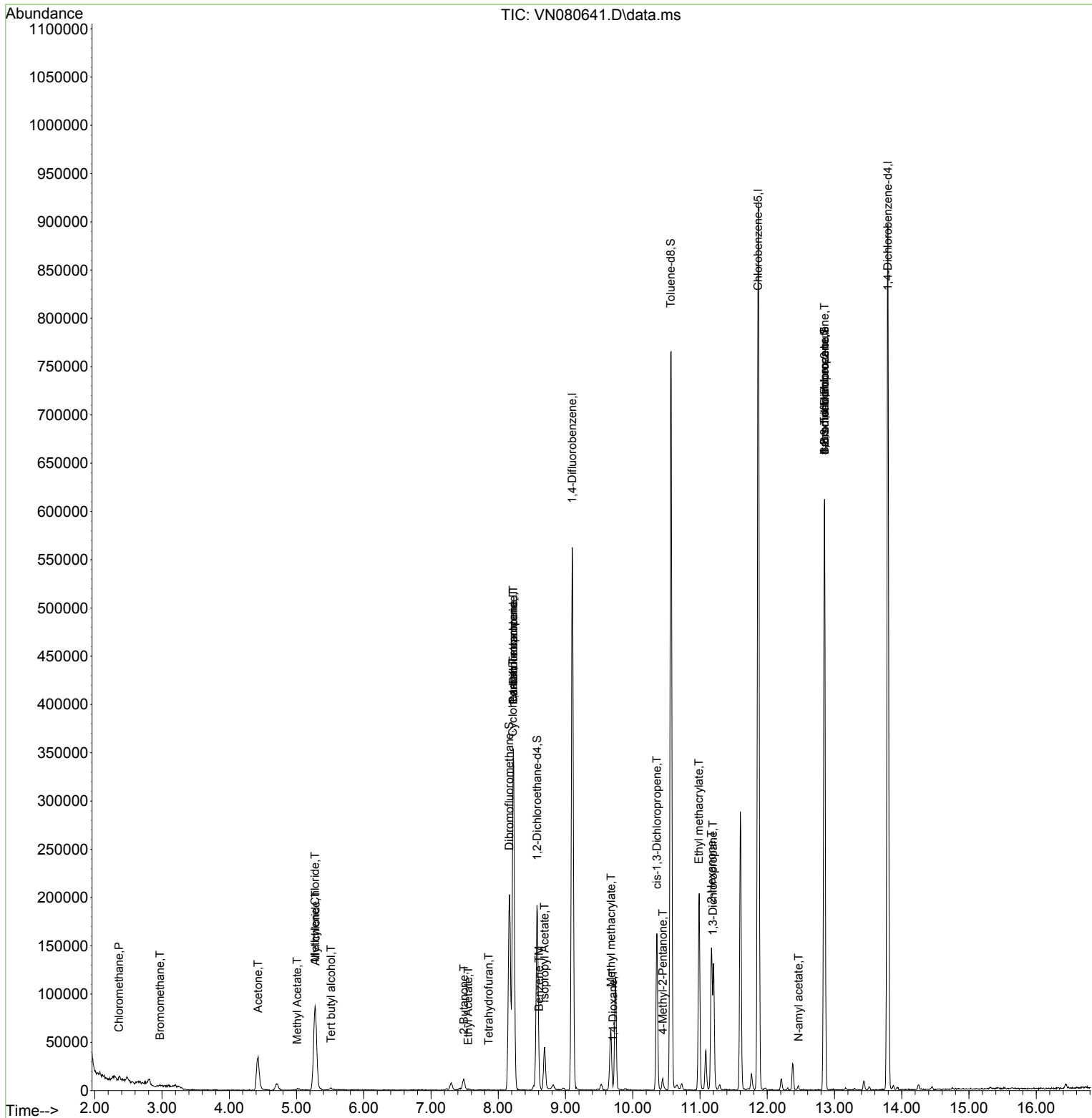
Internal Standards						
1) Pentafluorobenzene	8.224	168	253384	50.000	ug/l	0.00
34) 1,4-Difluorobenzene	9.100	114	491074	50.000	ug/l	0.00
63) Chlorobenzene-d5	11.865	117	550482	50.000	ug/l	0.00
72) 1,4-Dichlorobenzene-d4	13.794	152	249240	50.000	ug/l	0.00
System Monitoring Compounds						
33) 1,2-Dichloroethane-d4	8.577	65	161578	49.713	ug/l	0.00
Spiked Amount	50.000	Range	74 - 125	Recovery	=	99.420%
35) Dibromofluoromethane	8.165	113	146835	46.232	ug/l	0.00
Spiked Amount	50.000	Range	75 - 124	Recovery	=	92.460%
50) Toluene-d8	10.565	98	546935	49.321	ug/l	0.00
Spiked Amount	50.000	Range	86 - 113	Recovery	=	98.640%
62) 4-Bromofluorobenzene	12.853	95	221836	59.441	ug/l	0.00
Spiked Amount	50.000	Range	83 - 123	Recovery	=	118.880%
Target Compounds						
						Qvalue
3) Chloromethane	2.359	50	6726	1.233	ug/l	92
5) Bromomethane	2.971	94	798	0.670	ug/l #	79
11) Tert butyl alcohol	5.512	59	3476	7.949	ug/l #	86
14) Allyl chloride	5.283	41	2047	0.576	ug/l #	19
16) Acetone	4.430	43	64421	72.914	ug/l	100
18) Methyl Acetate	5.012	43	2463	0.503	ug/l #	73
20) Methylene Chloride	5.277	84	77198	27.384	ug/l	91
25) 2-Butanone	7.488	43	17449	10.567	ug/l	98
29) Tetrahydrofuran	7.859	42	397	0.369	ug/l #	20
31) Cyclohexane	8.218	56	5259	1.196	ug/l #	40
36) 1,1-Dichloropropene	8.224	75	20813	4.258	ug/l #	49
37) Ethyl Acetate	7.553	43	1509	0.409	ug/l #	73
38) Carbon Tetrachloride	8.224	117	27562	5.512	ug/l #	15
40) Benzene	8.606	78	1799	0.497	ug/l #	52
43) Isopropyl Acetate	8.688	43	47597	7.962	ug/l #	90
48) Methyl methacrylate	9.676	41	2469	0.744	ug/l #	34
49) 1,4-Dioxane	9.706	88	60	1.131	ug/l #	30
51) 4-Methyl-2-Pentanone	10.447	43	8657	2.546	ug/l #	84
54) cis-1,3-Dichloropropene	10.359	75	30792	5.825	ug/l #	66
56) Ethyl methacrylate	10.982	69	1487	0.492	ug/l #	1
57) 1,3-Dichloropropane	11.194	76	1357	0.260	ug/l #	42
59) 2-Hexanone	11.170	43	128288	50.059	ug/l #	19
71) Bromoform	12.853	173	1253	0.402	ug/l #	1
74) N-amyl acetate	12.465	43	2776	0.461	ug/l #	38
76) 1,2,3-Trichloropropane	12.853	75	115075	21.466	ug/l #	1
81) trans-1,4-Dichloro-2-b...	12.853	75	115075	58.147	ug/l #	15

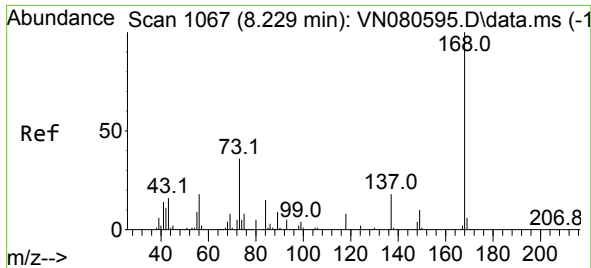
(#) = qualifier out of range (m) = manual integration (+) = signals summed

Data Path : Z:\voasrv\HPCHEM1\MSVOA_N\Data\VN010324\
 Data File : VN080641.D
 Acq On : 03 Jan 2024 15:43
 Operator : JC\MD
 Sample : 06045-02
 Misc : 5.0mL/MSVOA_N/WATER
 ALS Vial : 11 Sample Multiplier: 1

Instrument :
 MSVOA_N
 ClientSampleId :

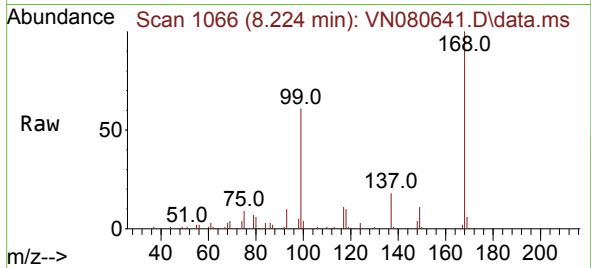
Quant Time: Jan 04 02:00:54 2024
 Quant Method : Z:\voasrv\HPCHEM1\MSVOA_N\methods\82N122723W.M
 Quant Title : SW846 8260
 QLast Update : Thu Dec 28 03:07:01 2023
 Response via : Initial Calibration



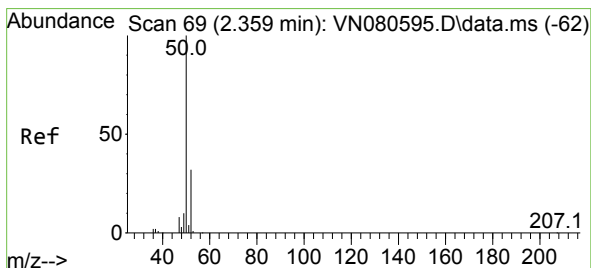
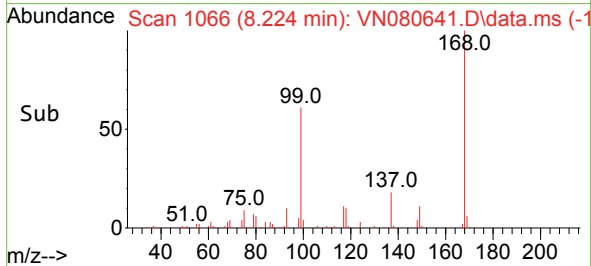
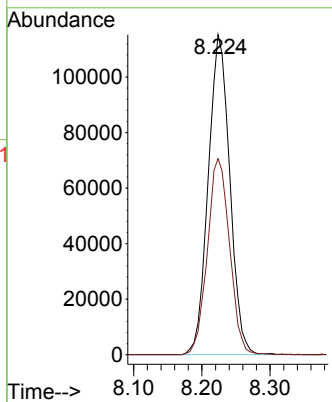


#1
 Pentafluorobenzene
 Concen: 50.000 ug/l
 RT: 8.224 min Scan# 1066
 Delta R.T. -0.005 min
 Lab File: VN080641.D
 Acq: 03 Jan 2024 15:43

Instrument :
 MSVOA_N
 ClientSampleId :

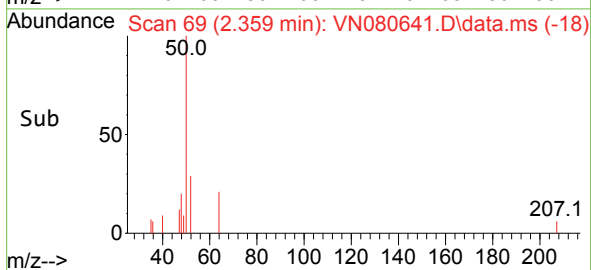
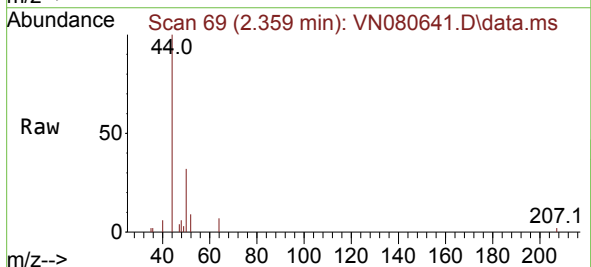
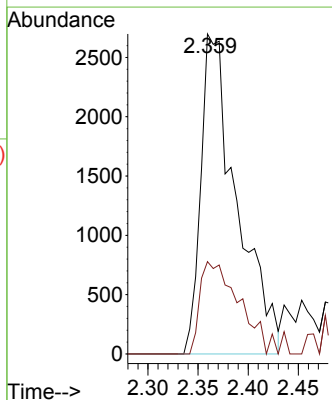


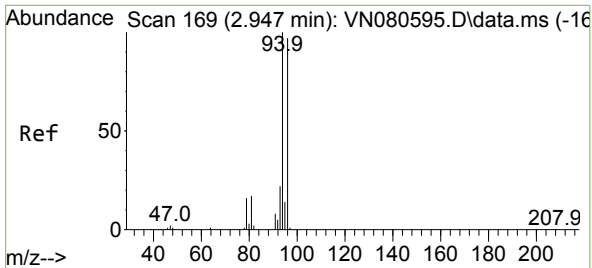
Tgt Ion:168 Resp: 253384
 Ion Ratio Lower Upper
 168 100
 99 61.3 53.0 79.6



#3
 Chloromethane
 Concen: 1.233 ug/l
 RT: 2.359 min Scan# 69
 Delta R.T. 0.000 min
 Lab File: VN080641.D
 Acq: 03 Jan 2024 15:43

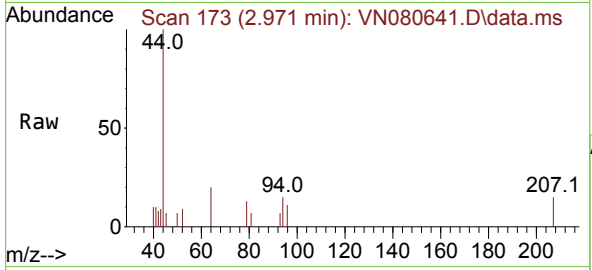
Tgt Ion: 50 Resp: 6726
 Ion Ratio Lower Upper
 50 100
 52 28.8 26.5 39.7



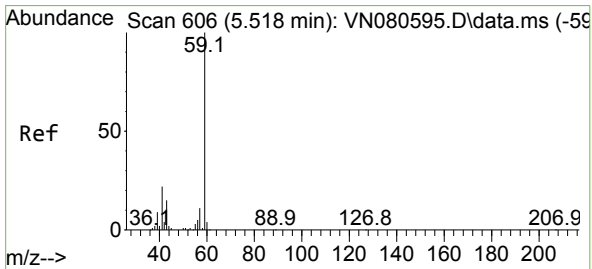
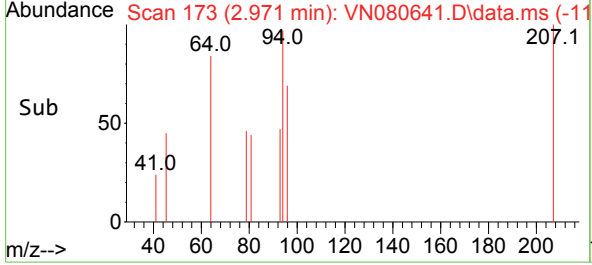
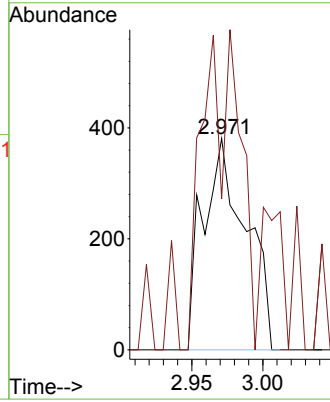


#5
 Bromomethane
 Concen: 0.670 ug/l
 RT: 2.971 min Scan# 11
 Delta R.T. 0.024 min
 Lab File: VN080641.D
 Acq: 03 Jan 2024 15:43

Instrument :
 MSVOA_N
 ClientSampleId :

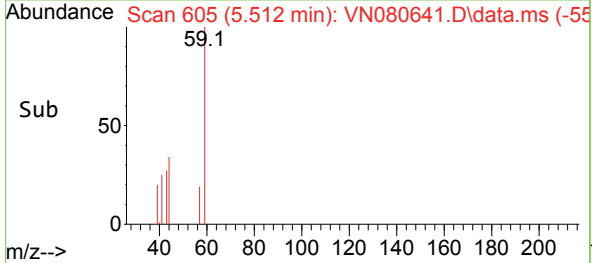
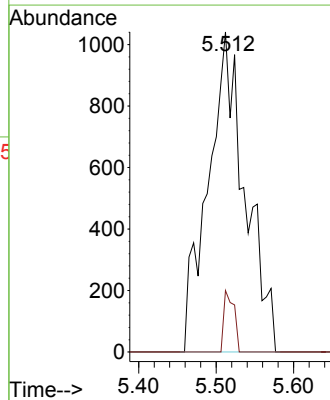
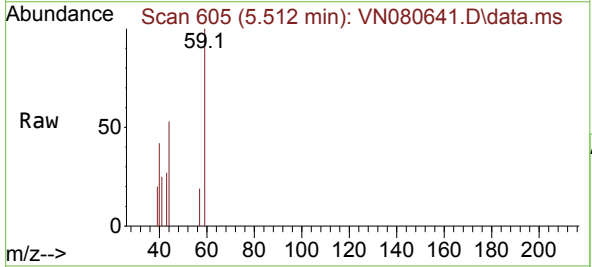


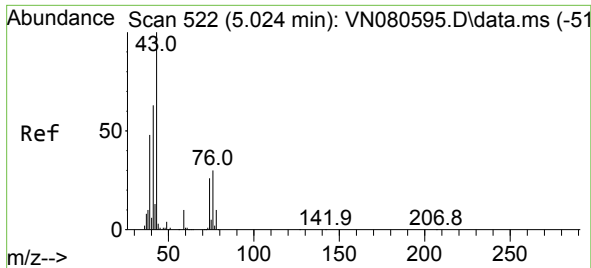
Tgt Ion: 94 Resp: 798
 Ion Ratio Lower Upper
 94 100
 96 71.4 73.1 109.7#



#11
 Tert butyl alcohol
 Concen: 7.949 ug/l
 RT: 5.512 min Scan# 605
 Delta R.T. -0.006 min
 Lab File: VN080641.D
 Acq: 03 Jan 2024 15:43

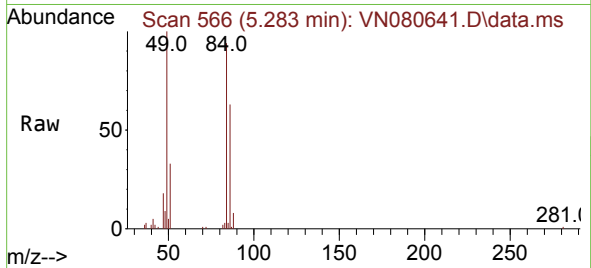
Tgt Ion: 59 Resp: 3476
 Ion Ratio Lower Upper
 59 100
 57 5.2 8.2 12.4#



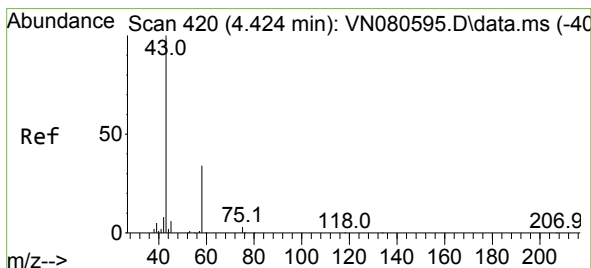
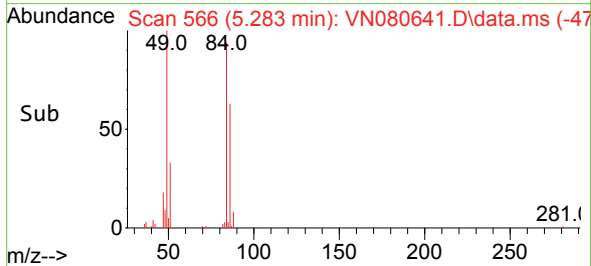
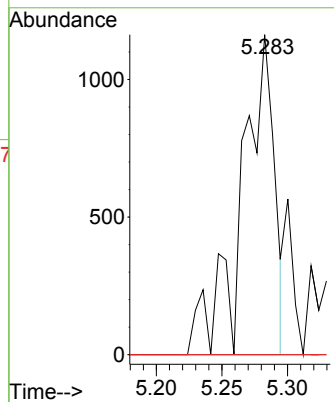


#14
 Allyl chloride
 Concen: 0.576 ug/l
 RT: 5.283 min Scan# 501
 Delta R.T. 0.259 min
 Lab File: VN080641.D
 Acq: 03 Jan 2024 15:43

Instrument :
 MSVOA_N
 ClientSampleId :

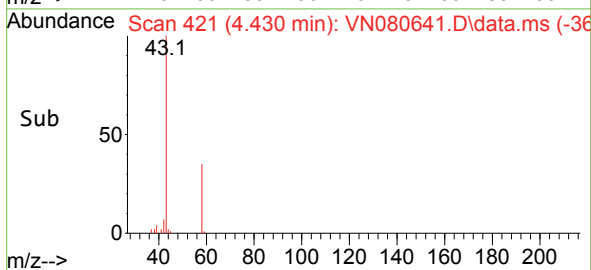
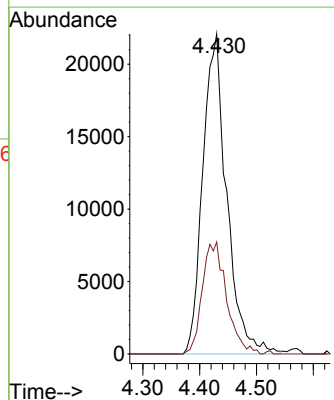
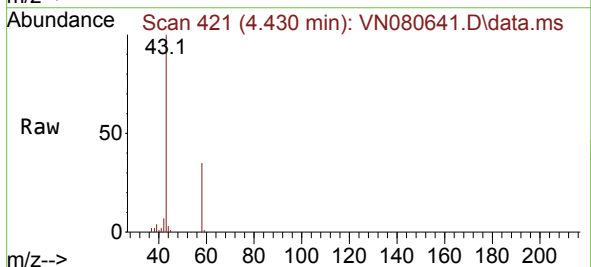


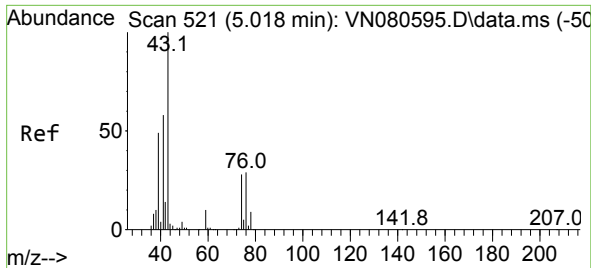
Tgt Ion: 41 Resp: 2047
 Ion Ratio Lower Upper
 41 100
 39 0.0 58.8 88.2#
 76 0.0 39.1 58.7#



#16
 Acetone
 Concen: 72.914 ug/l
 RT: 4.430 min Scan# 421
 Delta R.T. 0.006 min
 Lab File: VN080641.D
 Acq: 03 Jan 2024 15:43

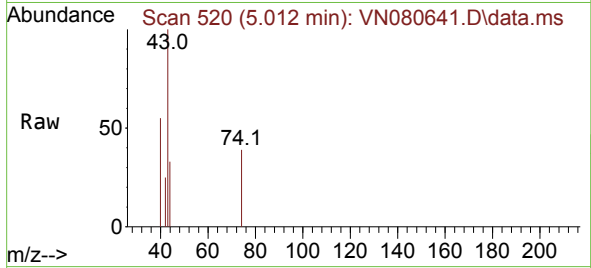
Tgt Ion: 43 Resp: 64421
 Ion Ratio Lower Upper
 43 100
 58 35.0 28.0 42.0



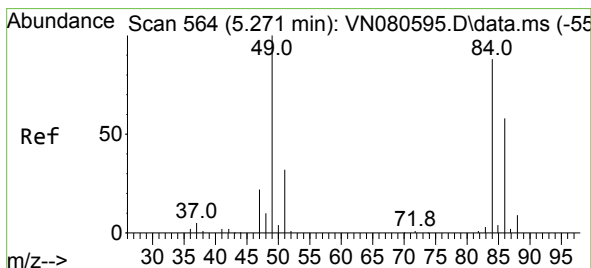
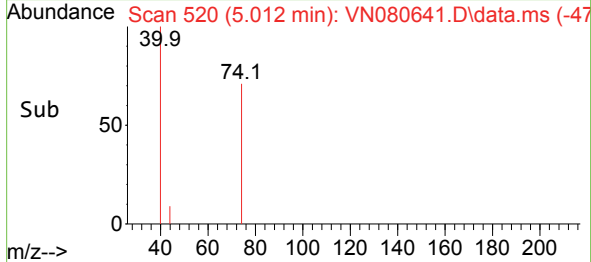
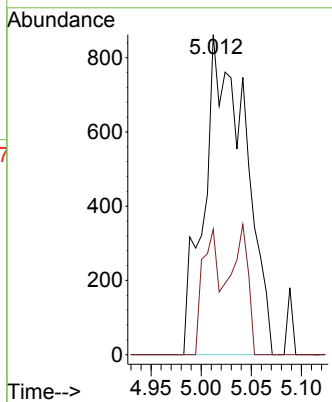


#18
 Methyl Acetate
 Concen: 0.503 ug/l
 RT: 5.012 min Scan# 51
 Delta R.T. -0.006 min
 Lab File: VN080641.D
 Acq: 03 Jan 2024 15:43

Instrument :
 MSVOA_N
 ClientSampleId :

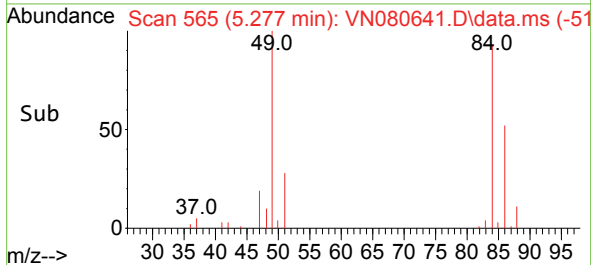
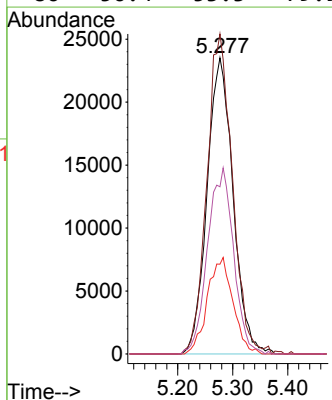
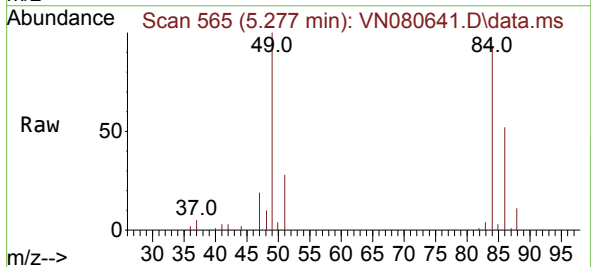


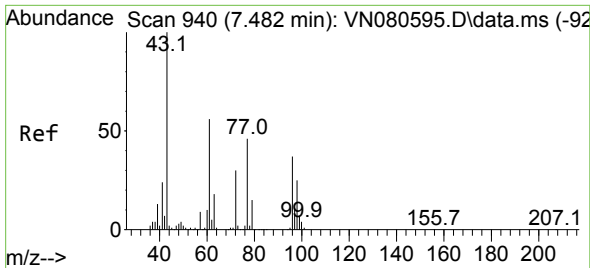
Tgt Ion: 43 Resp: 2463
 Ion Ratio Lower Upper
 43 100
 74 17.6 26.2 39.4#



#20
 Methylene Chloride
 Concen: 27.384 ug/l
 RT: 5.277 min Scan# 565
 Delta R.T. 0.006 min
 Lab File: VN080641.D
 Acq: 03 Jan 2024 15:43

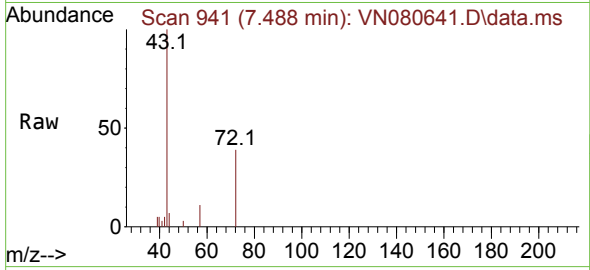
Tgt Ion: 84 Resp: 77198
 Ion Ratio Lower Upper
 84 100
 49 108.0 79.7 119.5
 51 30.3 25.2 37.8
 86 56.4 53.3 79.9



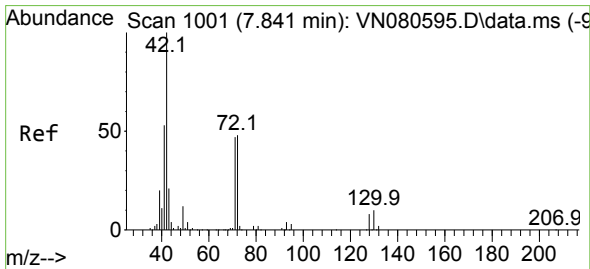
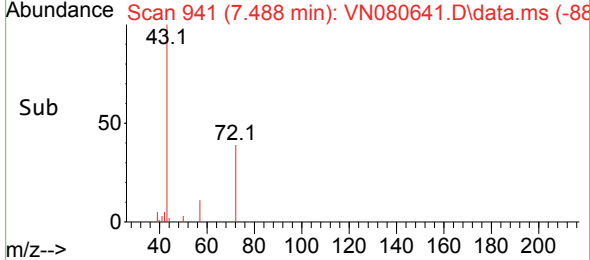
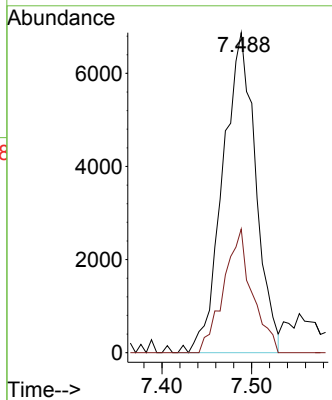


#25
 2-Butanone
 Concen: 10.567 ug/l
 RT: 7.488 min Scan# 941
 Delta R.T. 0.006 min
 Lab File: VN080641.D
 Acq: 03 Jan 2024 15:43

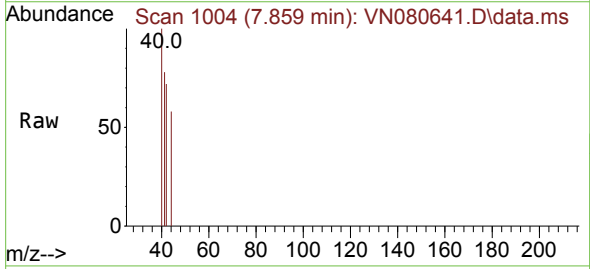
Instrument : MSVOA_N
 ClientSampleId :



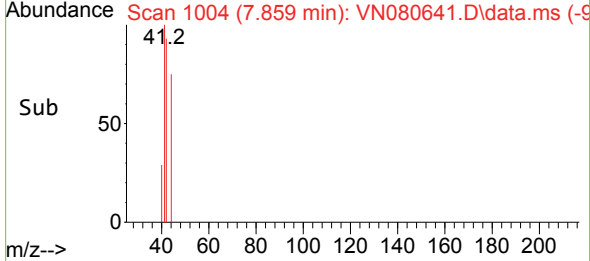
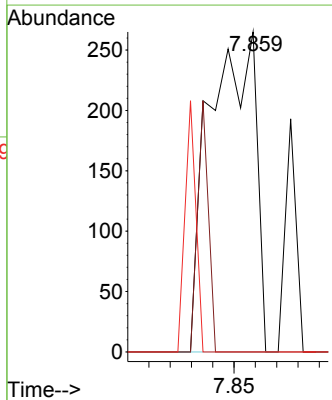
Tgt Ion: 43 Resp: 17449
 Ion Ratio Lower Upper
 43 100
 72 38.6 30.2 45.2

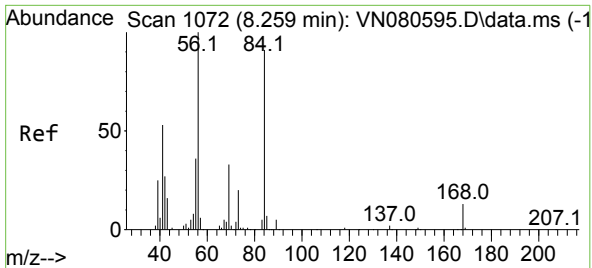


#29
 Tetrahydrofuran
 Concen: 0.369 ug/l
 RT: 7.859 min Scan# 1004
 Delta R.T. 0.018 min
 Lab File: VN080641.D
 Acq: 03 Jan 2024 15:43



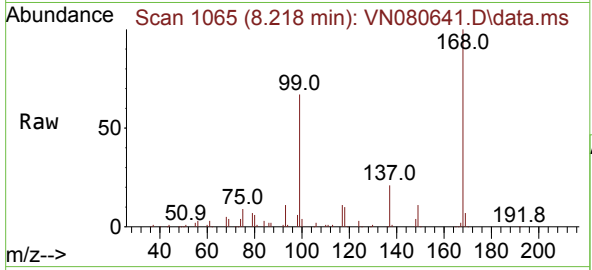
Tgt Ion: 42 Resp: 397
 Ion Ratio Lower Upper
 42 100
 72 0.0 49.8 74.6#
 71 0.0 47.4 71.2#





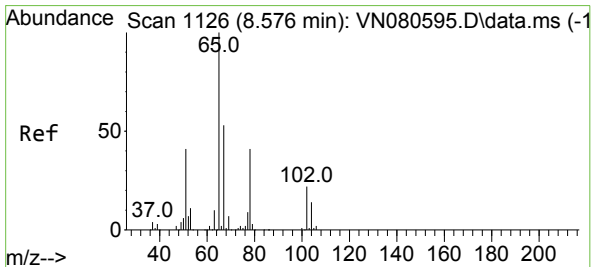
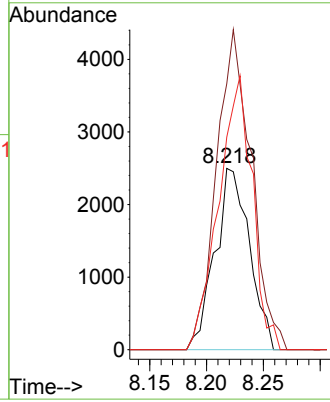
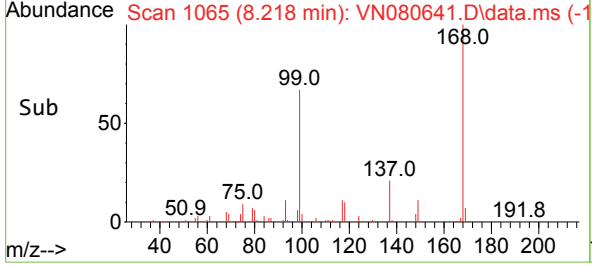
#31
 Cyclohexane
 Concen: 1.196 ug/l
 RT: 8.218 min Scan# 1065
 Delta R.T. -0.041 min
 Lab File: VN080641.D
 Acq: 03 Jan 2024 15:43

Instrument : MSVOA_N
 ClientSampleId :



Tgt Ion: 56 Resp: 5259

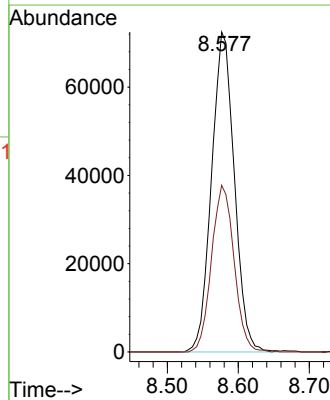
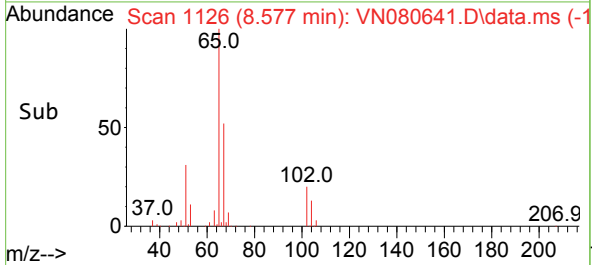
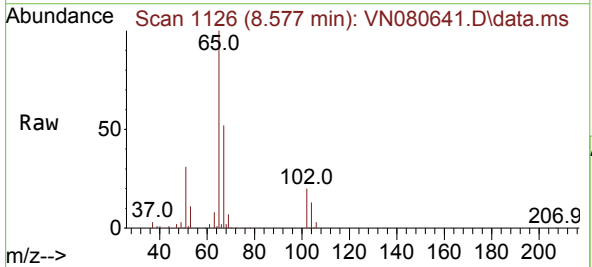
Ion	Ratio	Lower	Upper
56	100		
69	146.7	26.8	40.2#
84	117.2	81.8	122.6

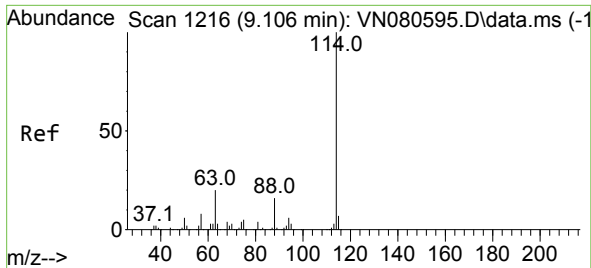


#33
 1,2-Dichloroethane-d4
 Concen: 49.713 ug/l
 RT: 8.577 min Scan# 1126
 Delta R.T. 0.000 min
 Lab File: VN080641.D
 Acq: 03 Jan 2024 15:43

Tgt Ion: 65 Resp: 161578

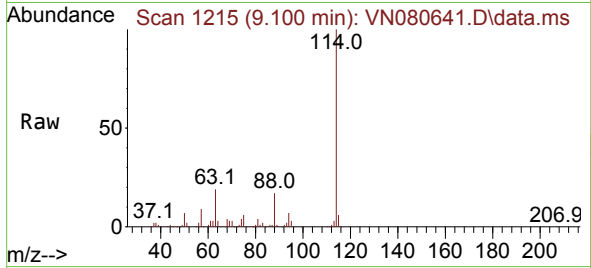
Ion	Ratio	Lower	Upper
65	100		
67	51.5	0.0	106.6



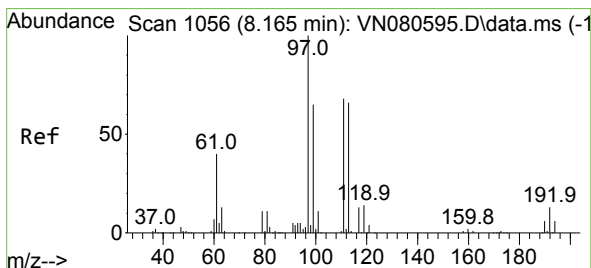
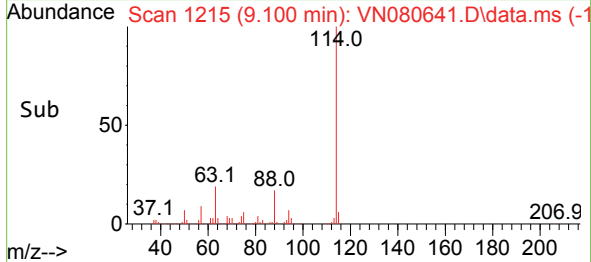
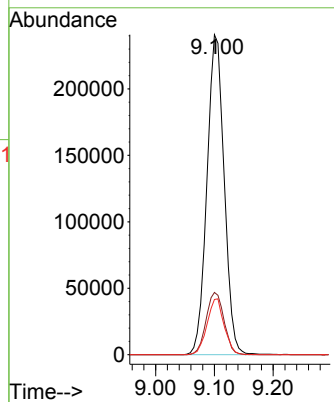


#34
 1,4-Difluorobenzene
 Concen: 50.000 ug/l
 RT: 9.100 min Scan# 11
 Delta R.T. -0.006 min
 Lab File: VN080641.D
 Acq: 03 Jan 2024 15:43

Instrument :
 MSVOA_N
 ClientSampleId :

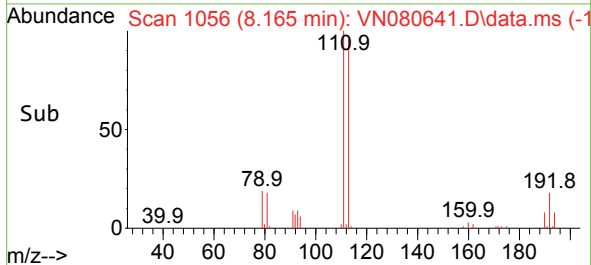
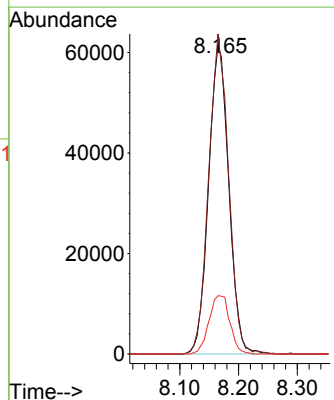
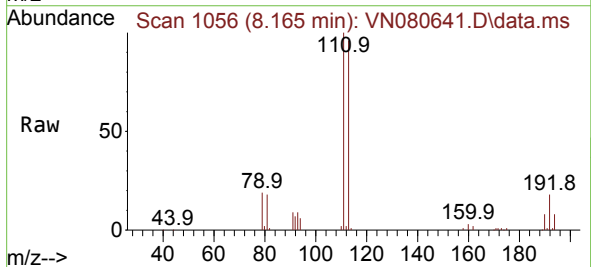


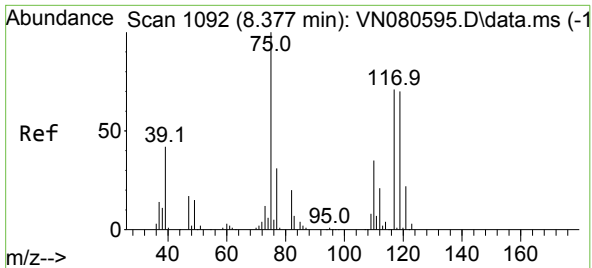
Tgt Ion:114 Resp: 491074
 Ion Ratio Lower Upper
 114 100
 63 19.4 0.0 36.4
 88 17.2 0.0 30.6



#35
 Dibromofluoromethane
 Concen: 46.232 ug/l
 RT: 8.165 min Scan# 1056
 Delta R.T. 0.000 min
 Lab File: VN080641.D
 Acq: 03 Jan 2024 15:43

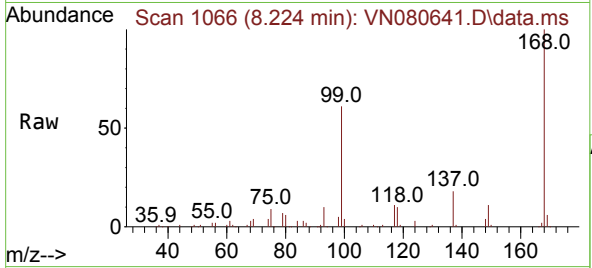
Tgt Ion:113 Resp: 146835
 Ion Ratio Lower Upper
 113 100
 111 102.5 82.6 123.8
 192 19.5 12.7 19.1#



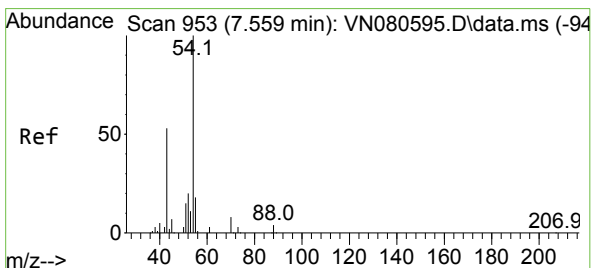
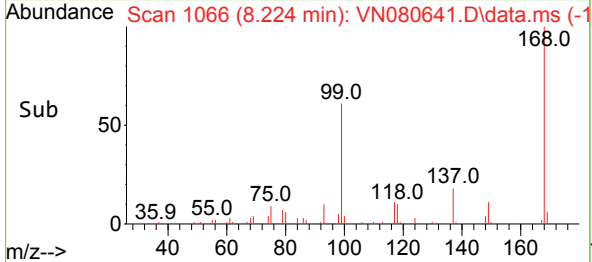
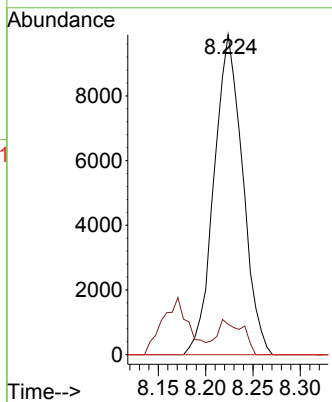


#36
 1,1-Dichloropropene
 Concen: 4.258 ug/l
 RT: 8.224 min Scan# 1066
 Delta R.T. -0.153 min
 Lab File: VN080641.D
 Acq: 03 Jan 2024 15:43

Instrument : MSVOA_N
 ClientSampleId :

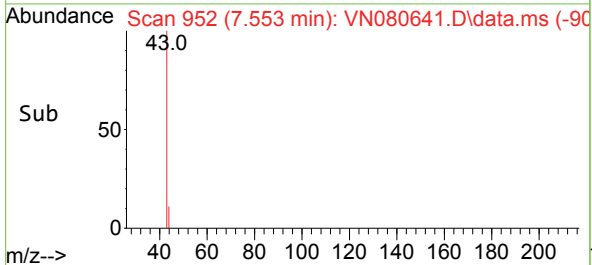
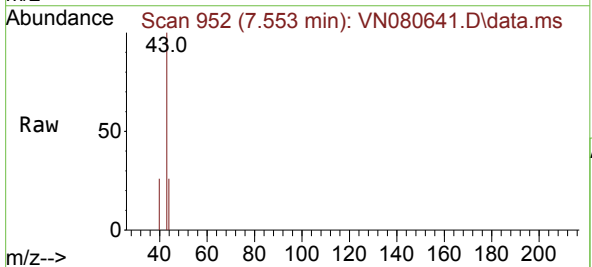
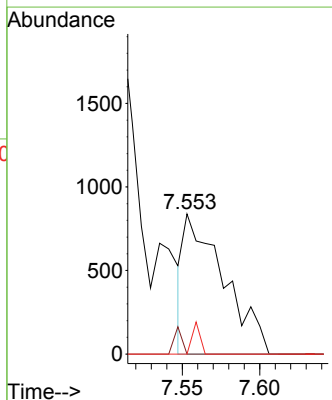


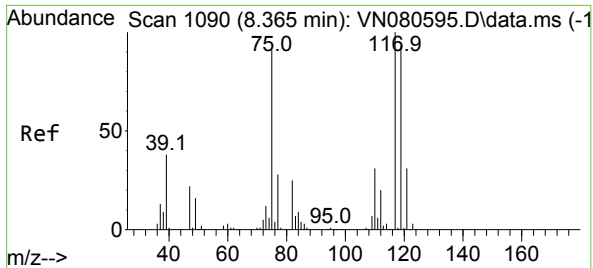
Tgt Ion: 75 Resp: 20813
 Ion Ratio Lower Upper
 75 100
 110 9.9 19.1 57.3#
 77 0.0 25.0 37.4#



#37
 Ethyl Acetate
 Concen: 0.409 ug/l
 RT: 7.553 min Scan# 952
 Delta R.T. -0.006 min
 Lab File: VN080641.D
 Acq: 03 Jan 2024 15:43

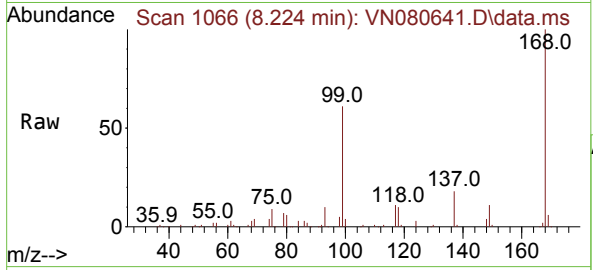
Tgt Ion: 43 Resp: 1509
 Ion Ratio Lower Upper
 43 100
 61 3.8 13.2 19.8#
 70 4.5 11.3 16.9#



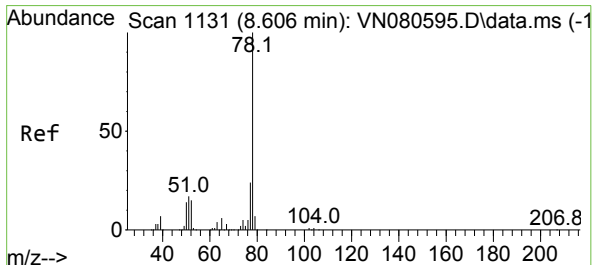
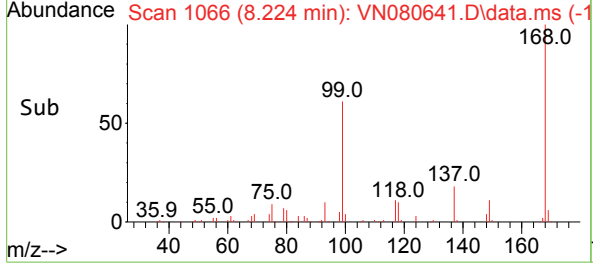
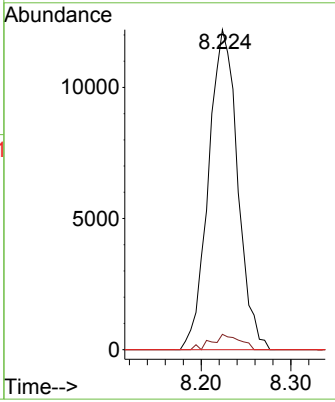


#38
 Carbon Tetrachloride
 Concen: 5.512 ug/l
 RT: 8.224 min Scan# 1066
 Delta R.T. -0.141 min
 Lab File: VN080641.D
 Acq: 03 Jan 2024 15:43

Instrument : MSVOA_N
 ClientSampleId :

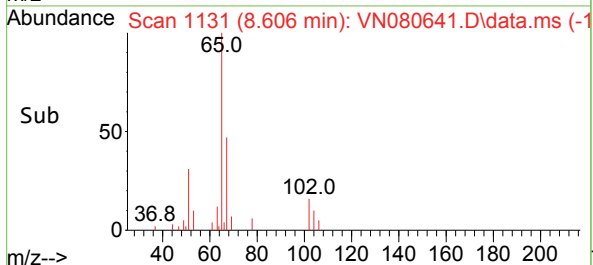
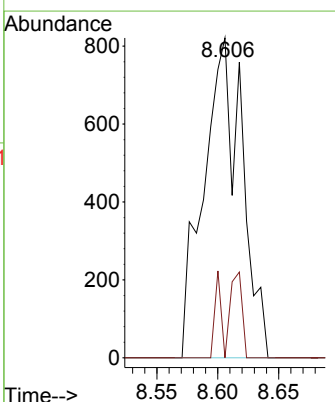
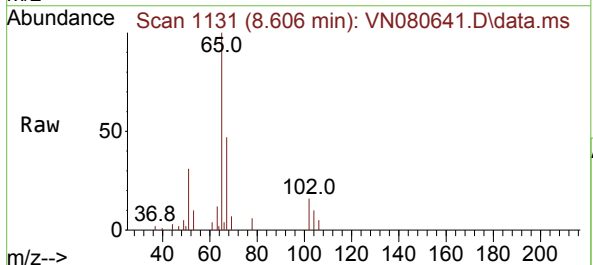


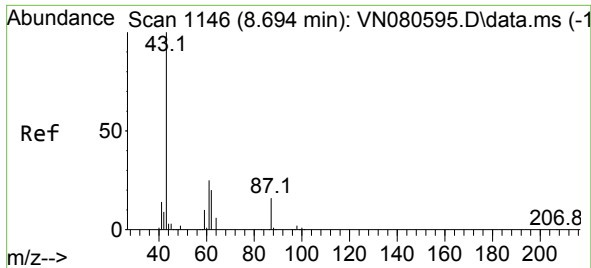
Tgt Ion:117 Resp: 27562
 Ion Ratio Lower Upper
 117 100
 119 4.8 77.3 115.9#
 121 0.0 23.3 34.9#



#40
 Benzene
 Concen: 0.497 ug/l
 RT: 8.606 min Scan# 1131
 Delta R.T. -0.000 min
 Lab File: VN080641.D
 Acq: 03 Jan 2024 15:43

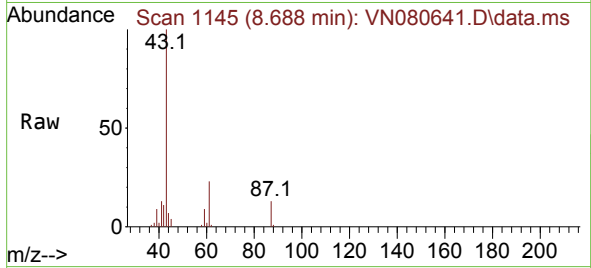
Tgt Ion: 78 Resp: 1799
 Ion Ratio Lower Upper
 78 100
 77 0.0 19.0 28.6#





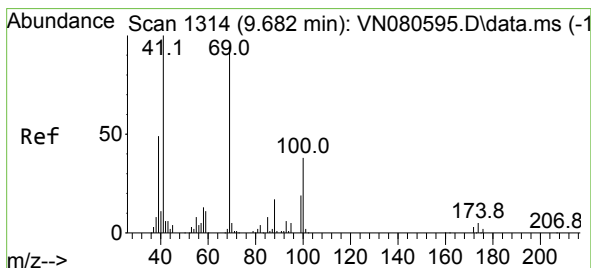
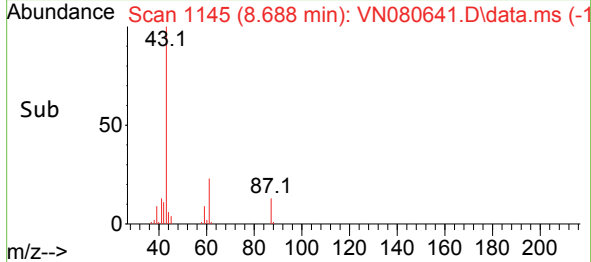
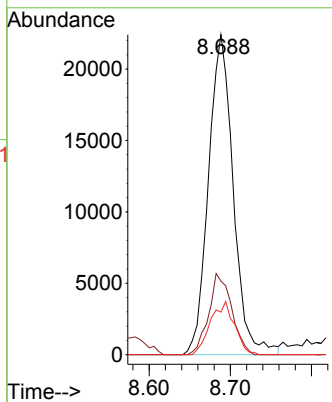
#43
 Isopropyl Acetate
 Concen: 7.962 ug/l
 RT: 8.688 min Scan# 1145
 Delta R.T. -0.006 min
 Lab File: VN080641.D
 Acq: 03 Jan 2024 15:43

Instrument : MSVOA_N
 ClientSampleId :



Tgt Ion: 43 Resp: 47597

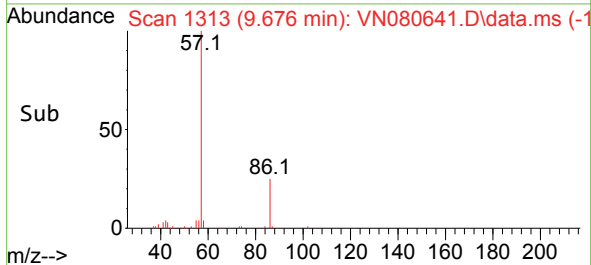
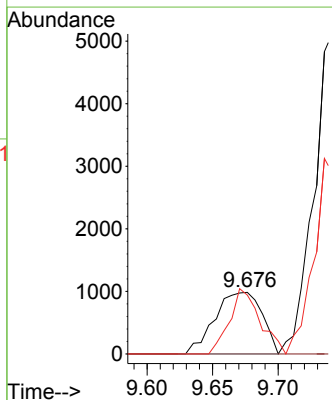
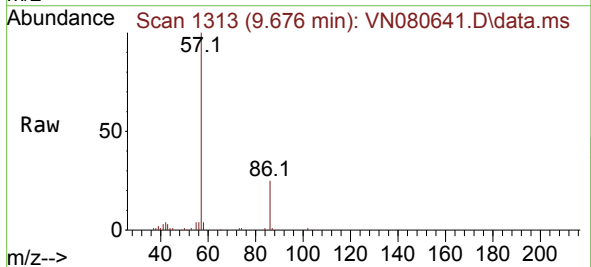
Ion	Ratio	Lower	Upper
43	100		
61	23.5	24.7	37.1#
87	16.1	14.6	21.8

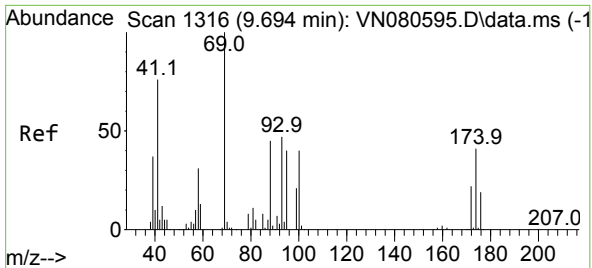


#48
 Methyl methacrylate
 Concen: 0.744 ug/l
 RT: 9.676 min Scan# 1313
 Delta R.T. -0.006 min
 Lab File: VN080641.D
 Acq: 03 Jan 2024 15:43

Tgt Ion: 41 Resp: 2469

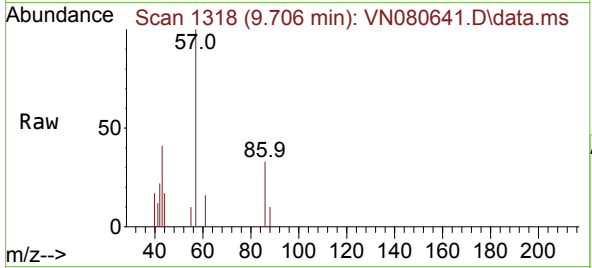
Ion	Ratio	Lower	Upper
41	100		
69	0.0	90.4	135.6#
39	68.2	54.6	81.8



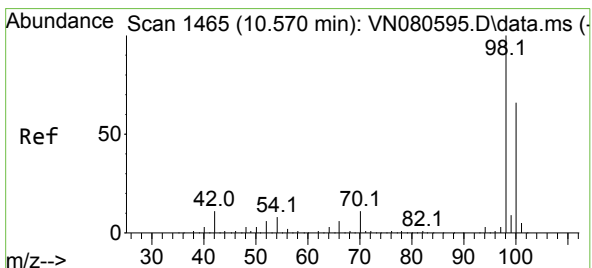
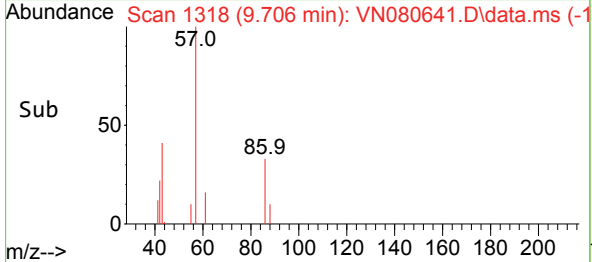
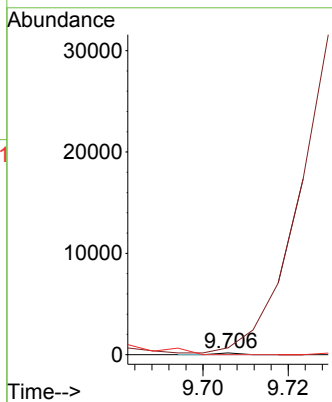


#49
 1,4-Dioxane
 Concen: 1.131 ug/l
 RT: 9.706 min Scan# 11
 Delta R.T. 0.012 min
 Lab File: VN080641.D
 Acq: 03 Jan 2024 15:43

Instrument : MSVOA_N
 ClientSampleId :

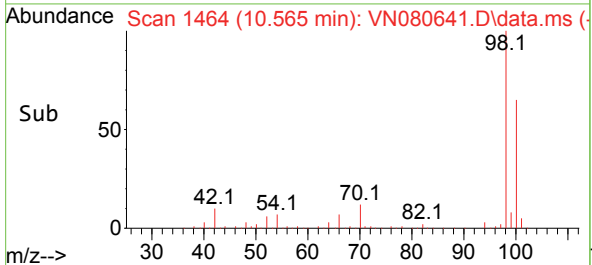
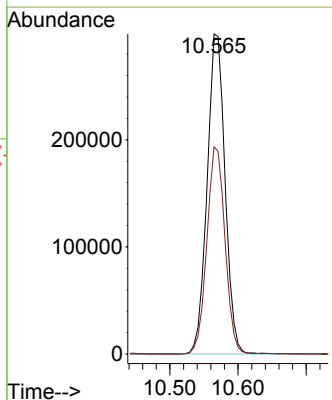
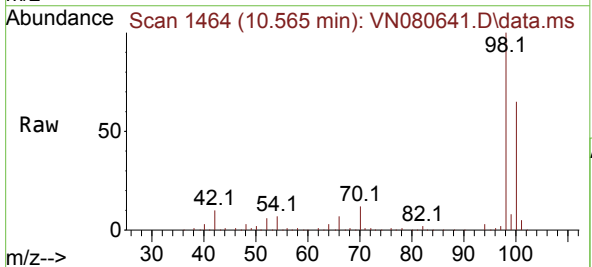


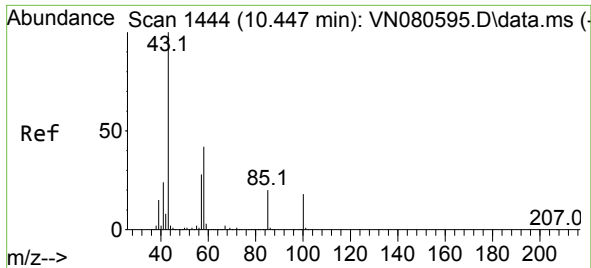
Tgt Ion: 88 Resp: 60
 Ion Ratio Lower Upper
 88 100
 43 0.0 17.0 25.6#
 58 0.0 47.0 70.4#



#50
 Toluene-d8
 Concen: 49.321 ug/l
 RT: 10.565 min Scan# 1464
 Delta R.T. -0.006 min
 Lab File: VN080641.D
 Acq: 03 Jan 2024 15:43

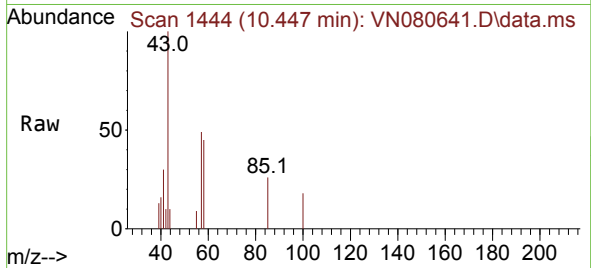
Tgt Ion: 98 Resp: 546935
 Ion Ratio Lower Upper
 98 100
 100 65.5 52.0 78.0



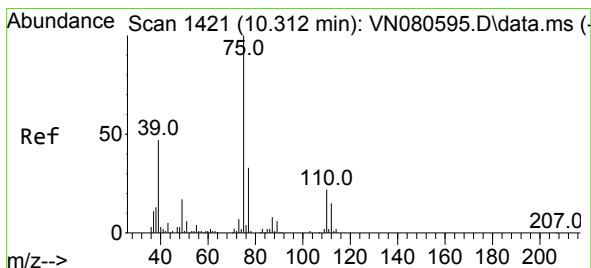
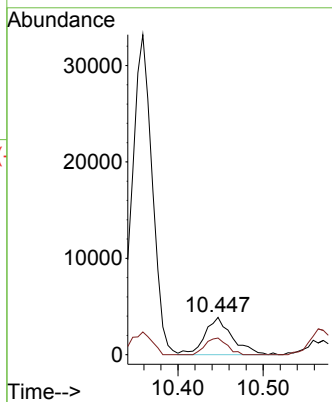
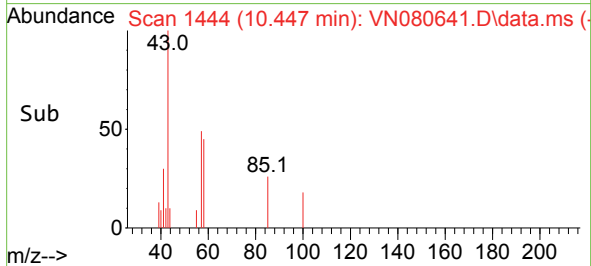


#51
 4-Methyl-2-Pentanone
 Concen: 2.546 ug/l
 RT: 10.447 min Scan# 1444
 Delta R.T. 0.000 min
 Lab File: VN080641.D
 Acq: 03 Jan 2024 15:43

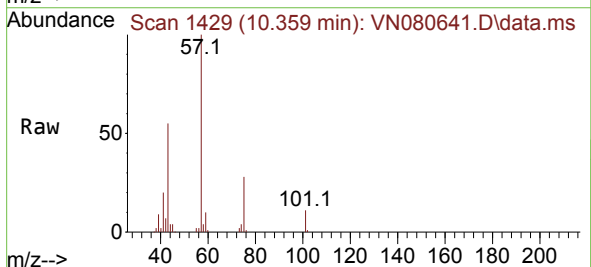
Instrument :
 MSVOA_N
 ClientSampleId :



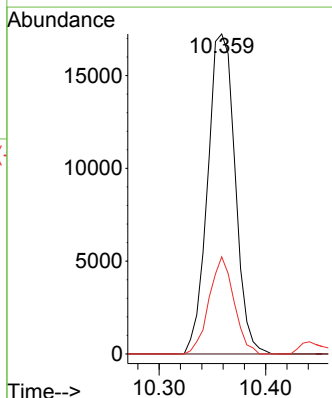
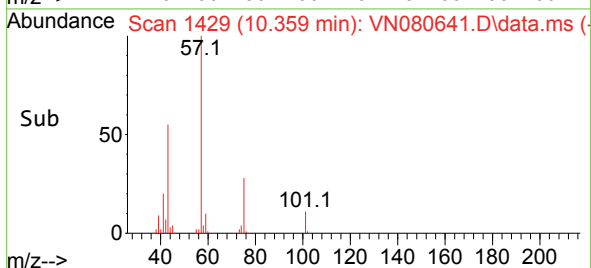
Tgt Ion: 43 Resp: 8657
 Ion Ratio Lower Upper
 43 100
 58 35.3 36.6 54.8#

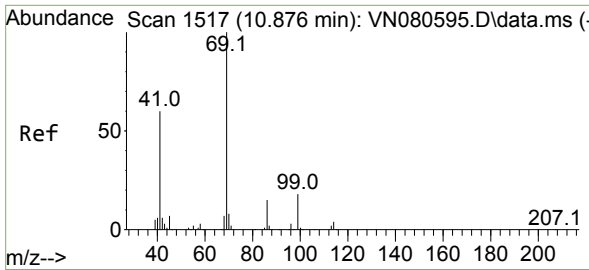


#54
 cis-1,3-Dichloropropene
 Concen: 5.825 ug/l
 RT: 10.359 min Scan# 1429
 Delta R.T. 0.047 min
 Lab File: VN080641.D
 Acq: 03 Jan 2024 15:43



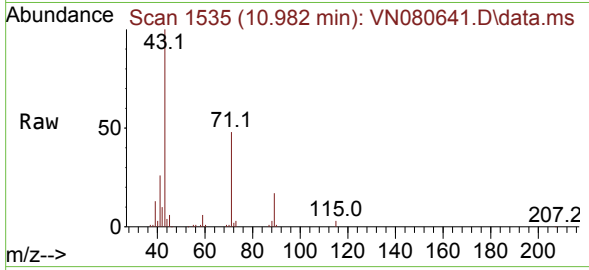
Tgt Ion: 75 Resp: 30792
 Ion Ratio Lower Upper
 75 100
 77 0.0 26.1 39.1#
 39 30.4 31.6 47.4#



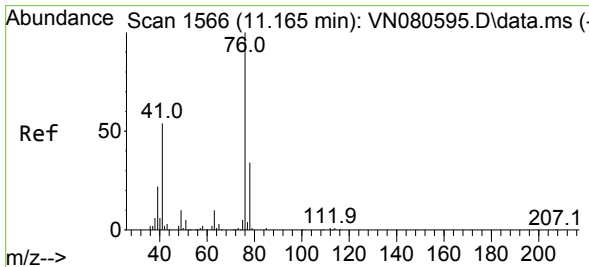
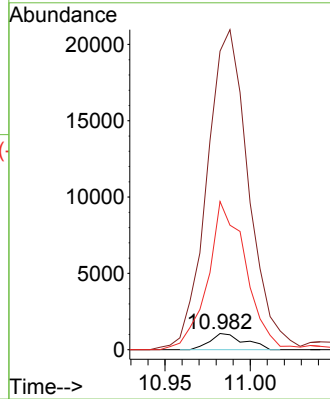
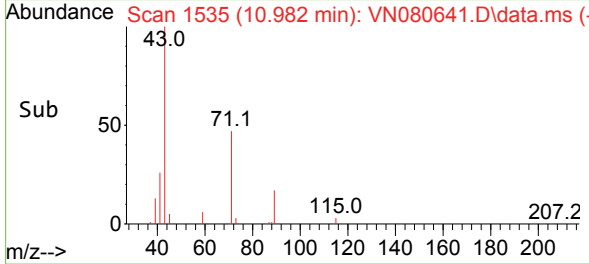


#56
 Ethyl methacrylate
 Concen: 0.492 ug/l
 RT: 10.982 min Scan# 1535
 Delta R.T. 0.106 min
 Lab File: VN080641.D
 Acq: 03 Jan 2024 15:43

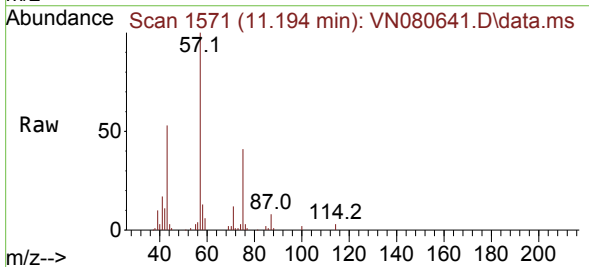
Instrument : MSVOA_N
 ClientSampleId :



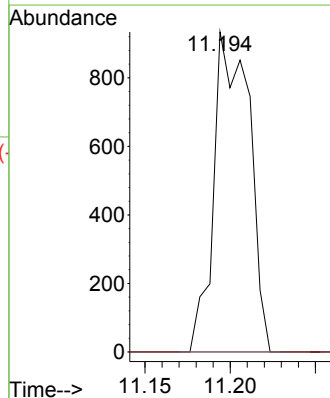
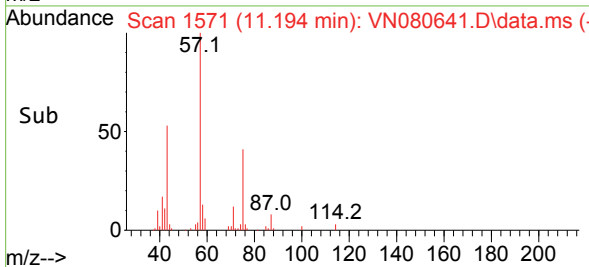
Tgt Ion: 69 Resp: 1487
 Ion Ratio Lower Upper
 69 100
 41 2396.8 39.6 59.4#
 39 1021.2 28.6 43.0#

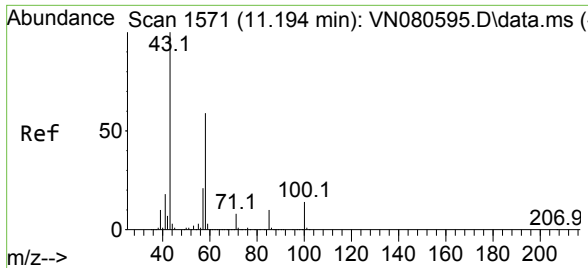


#57
 1,3-Dichloropropane
 Concen: 0.260 ug/l
 RT: 11.194 min Scan# 1571
 Delta R.T. 0.029 min
 Lab File: VN080641.D
 Acq: 03 Jan 2024 15:43



Tgt Ion: 76 Resp: 1357
 Ion Ratio Lower Upper
 76 100
 78 0.0 26.1 39.1#

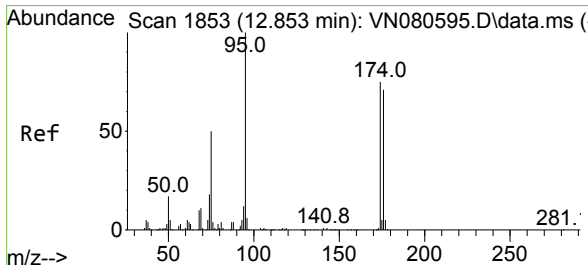
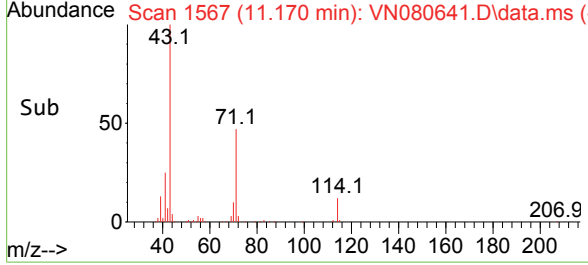
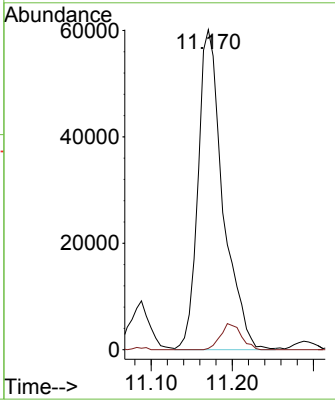
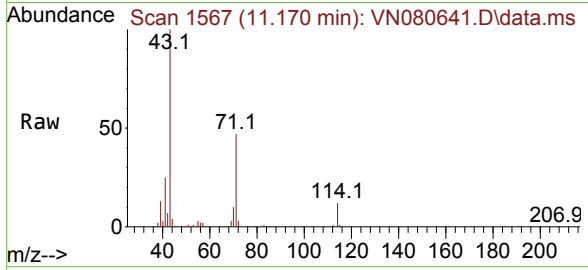




#59
 2-Hexanone
 Concen: 50.059 ug/l
 RT: 11.170 min Scan# 11170
 Delta R.T. -0.023 min
 Lab File: VN080641.D
 Acq: 03 Jan 2024 15:43

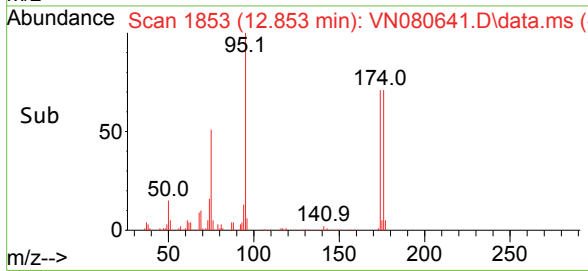
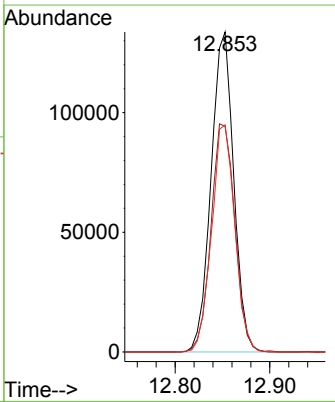
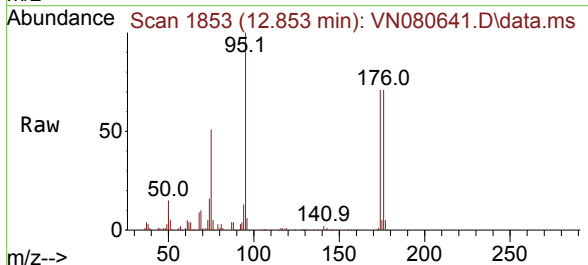
Instrument : MSVOA_N
 ClientSampleId :

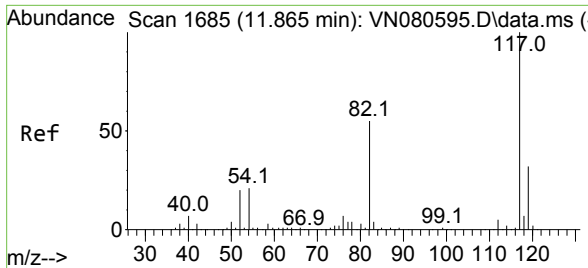
Tgt Ion: 43 Resp: 128288
 Ion Ratio Lower Upper
 43 100
 58 0.0 31.7 95.1#



#62
 4-Bromofluorobenzene
 Concen: 59.441 ug/l
 RT: 12.853 min Scan# 1853
 Delta R.T. 0.000 min
 Lab File: VN080641.D
 Acq: 03 Jan 2024 15:43

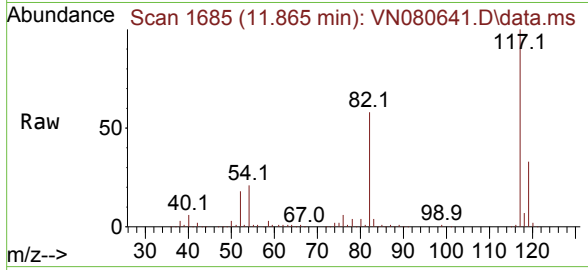
Tgt Ion: 95 Resp: 221836
 Ion Ratio Lower Upper
 95 100
 174 75.2 0.0 143.8
 176 72.8 0.0 135.8





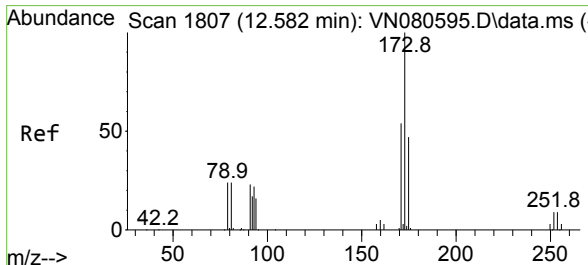
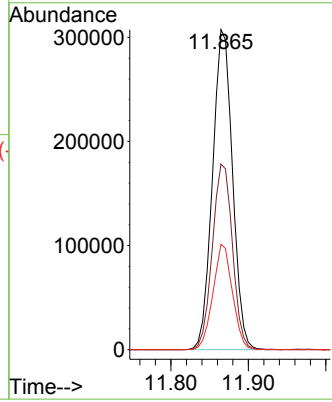
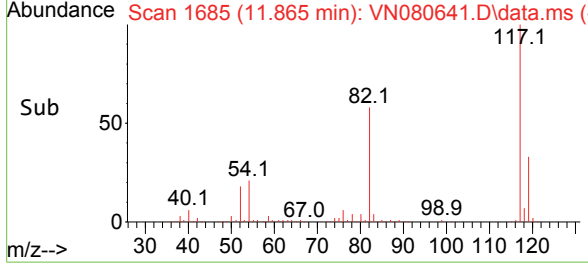
#63
 Chlorobenzene-d5
 Concen: 50.000 ug/l
 RT: 11.865 min Scan# 117
 Delta R.T. 0.000 min
 Lab File: VN080641.D
 Acq: 03 Jan 2024 15:43

Instrument : MSVOA_N
 ClientSampleId :

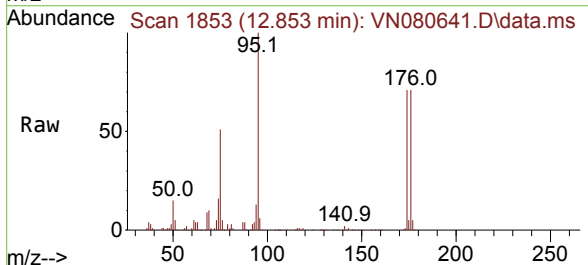


Tgt Ion:117 Resp: 550482

Ion	Ratio	Lower	Upper
117	100		
82	58.0	44.0	66.0
119	33.0	25.6	38.4

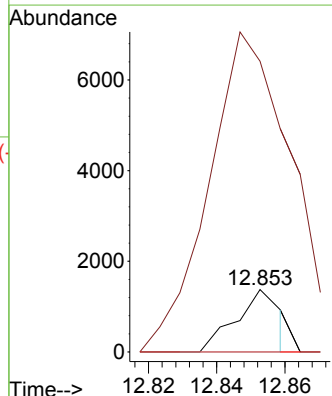
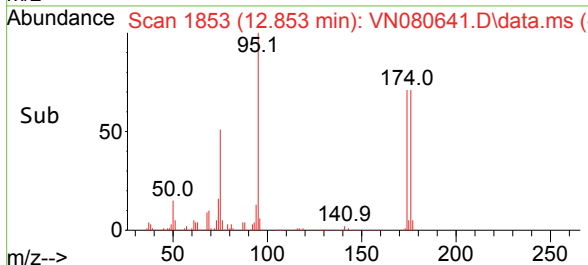


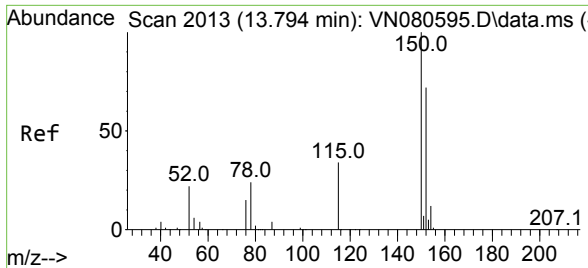
#71
 Bromoform
 Concen: 0.402 ug/l
 RT: 12.853 min Scan# 1853
 Delta R.T. 0.271 min
 Lab File: VN080641.D
 Acq: 03 Jan 2024 15:43



Tgt Ion:173 Resp: 1253

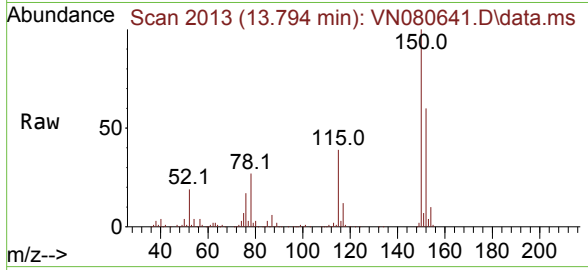
Ion	Ratio	Lower	Upper
173	100		
175	786.2	24.3	73.0#
254	0.0	0.0	0.0



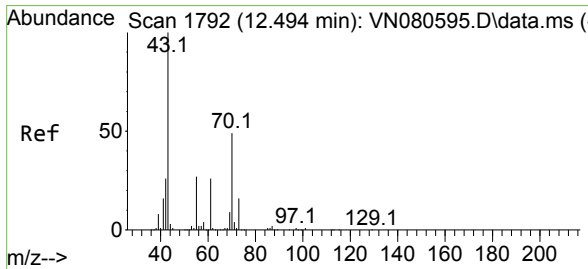
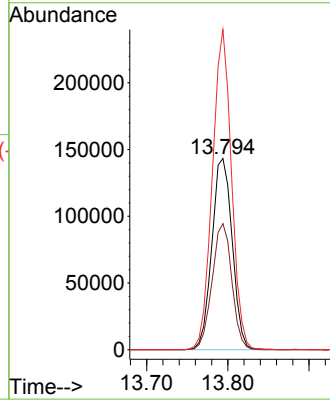
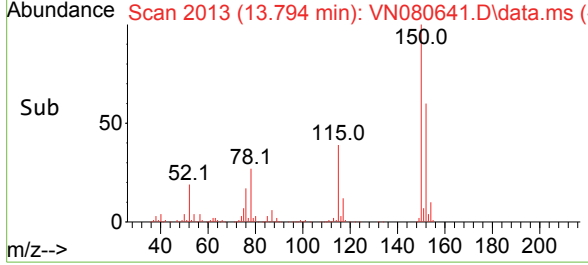


#72
 1,4-Dichlorobenzene-d4
 Concen: 50.000 ug/l
 RT: 13.794 min Scan# 20
 Delta R.T. 0.000 min
 Lab File: VN080641.D
 Acq: 03 Jan 2024 15:43

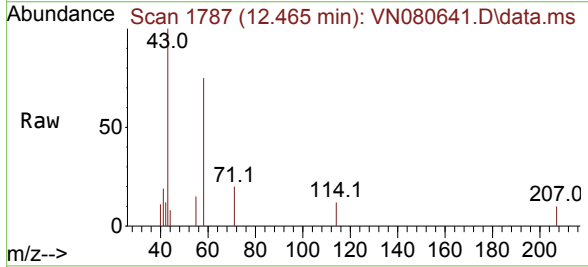
Instrument :
 MSVOA_N
 ClientSampleId :



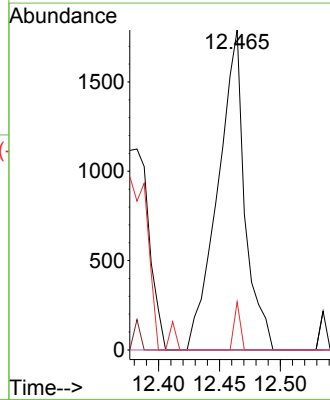
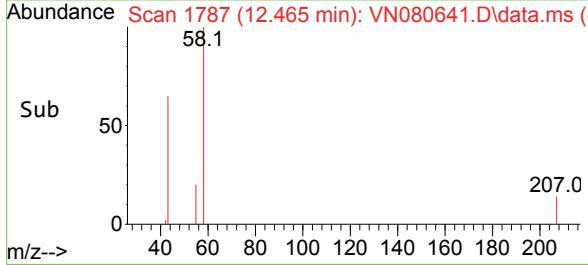
Tgt Ion:152 Resp: 249240
 Ion Ratio Lower Upper
 152 100
 115 64.0 32.3 96.8
 150 157.2 0.0 355.8

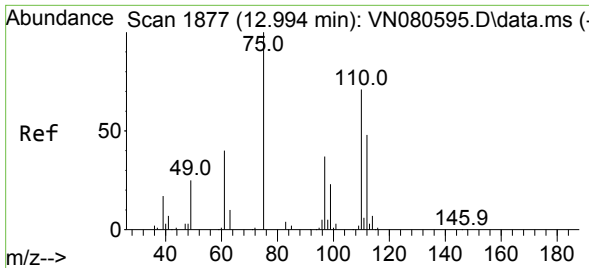


#74
 N-amy1 acetate
 Concen: 0.461 ug/l
 RT: 12.465 min Scan# 1787
 Delta R.T. -0.029 min
 Lab File: VN080641.D
 Acq: 03 Jan 2024 15:43



Tgt Ion: 43 Resp: 2776
 Ion Ratio Lower Upper
 43 100
 70 0.0 43.4 65.2#
 55 3.4 21.4 32.0#
 61 0.0 22.8 34.2#

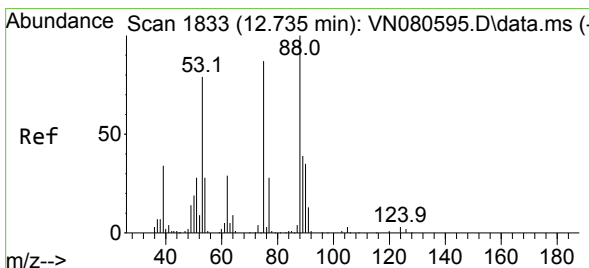
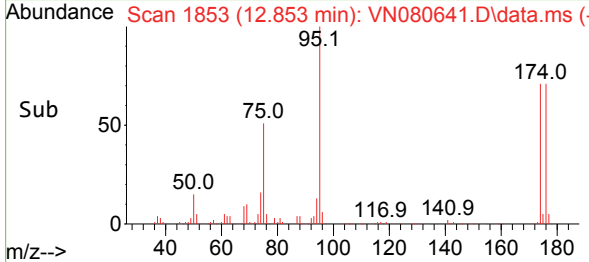
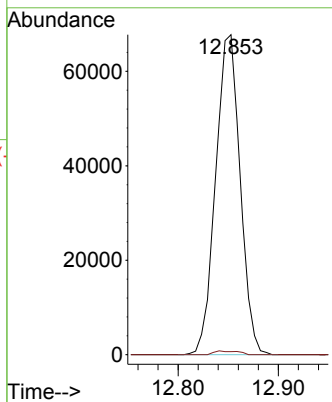
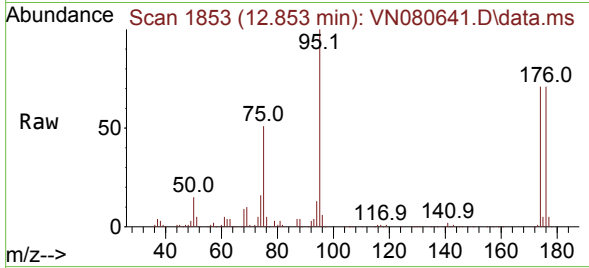




#76
 1,2,3-Trichloropropane
 Concen: 21.466 ug/l
 RT: 12.853 min Scan# 1853
 Delta R.T. -0.141 min
 Lab File: VN080641.D
 Acq: 03 Jan 2024 15:43

Instrument : MSVOA_N
 ClientSampleId :

Tgt Ion: 75 Resp: 115075
 Ion Ratio Lower Upper
 75 100
 77 1.1 84.5 253.5#



#81
 trans-1,4-Dichloro-2-butene
 Concen: 58.147 ug/l
 RT: 12.853 min Scan# 1853
 Delta R.T. 0.118 min
 Lab File: VN080641.D
 Acq: 03 Jan 2024 15:43

Tgt Ion: 75 Resp: 115075
 Ion Ratio Lower Upper
 75 100
 53 0.0 67.4 101.2#
 89 0.1 38.8 58.2#

