

Data Path : Z:\voasrv\HPCHEM1\MSVOA_N\Data\VNC10421\
 Data File : VN065373.D
 Acq On : 4 Jan 2021 13:13
 Operator : JC/MD
 Sample : L5252-04
 Misc : 5.00mL/MSVOA_N/WATER
 ALS Vial : 8 Sample Multiplier: 1

Instrument :
 MSVOA_N
 ClientSampleId :
 DUP

Integration Parameters: RTEINT.P
 Integrator: RTE
 Smoothing : CN
 Sampling : 1
 Start Thrs: 0.2
 Stop Thrs : 0
 Filtering: 5
 Min Area: 3 % of Largest Peak
 Max Peaks: 100
 Peak Location: TOP

If leading or trailing edge < 100 prefer < Baseline drop else tangent >
 Peak separation: 5

Method : Z:\voasrv\HPCHEM1\MSVOA_N\methods\82N122220W.M
 Title : SW846 8260

Signal : TIC: VN065373.D\data.ms

peak #	R.T. min	first scan	max scan	last scan	PK TY	peak height	corr. area	corr. % max.	% of total
1	6.785	1551	1569	1598	rBV2	60655	173633	12.61%	2.264%
2	7.553	1789	1808	1819	rBV	170153	430224	31.25%	5.609%
3	7.627	1819	1831	1853	rVB	284205	682722	49.60%	8.901%
4	7.991	1927	1944	1969	rBV	166055	393148	28.56%	5.126%
5	8.550	2103	2118	2147	rVB	456978	962422	69.92%	12.548%
6	8.801	2181	2196	2218	rVB	55700	116219	8.44%	1.515%
7	10.058	2570	2587	2623	rBV	738355	1376541	100.00%	17.947%
8	10.601	2743	2756	2774	rVB	107575	194289	14.11%	2.533%
9	11.380	2984	2998	3026	rBV	728671	1305166	94.81%	17.017%
10	12.376	3295	3308	3335	rBV	567039	1010399	73.40%	13.174%
11	13.318	3588	3601	3626	rBV	575062	1025134	74.47%	13.366%

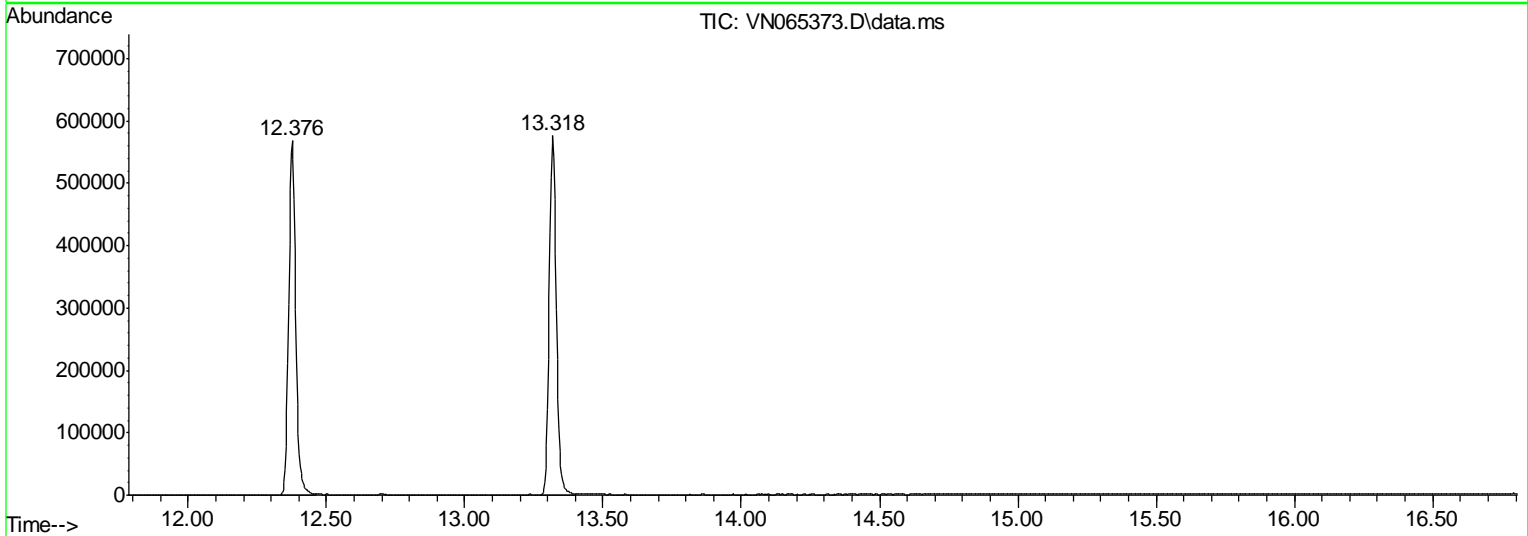
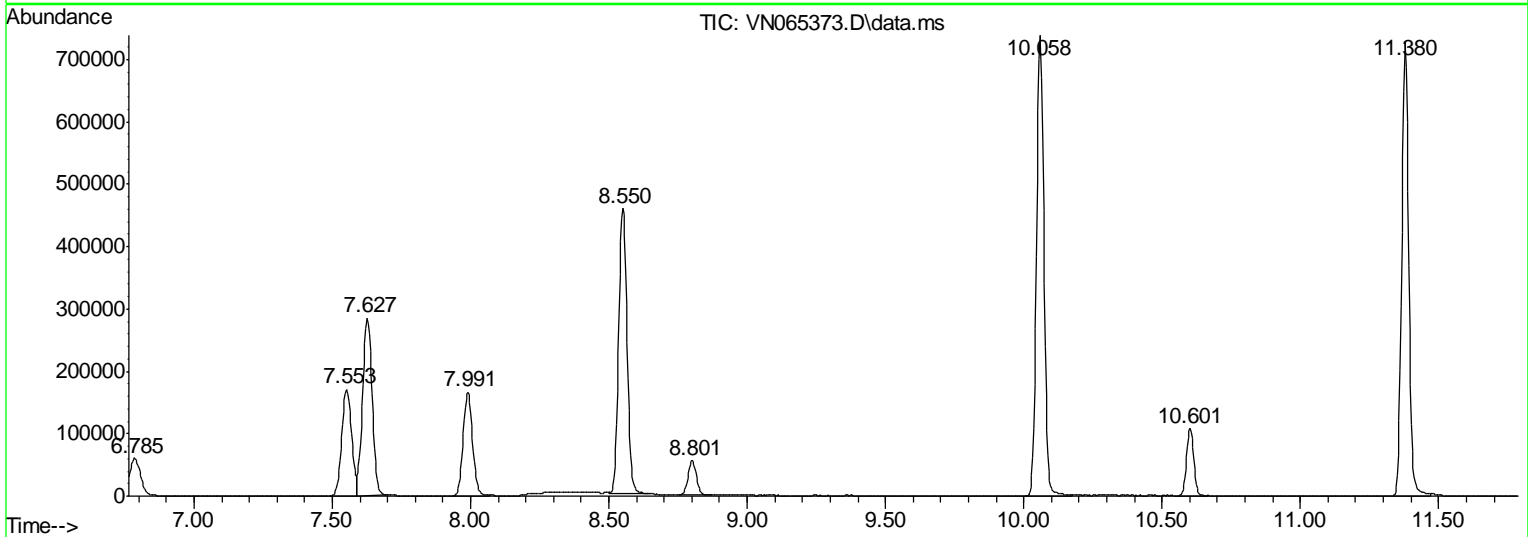
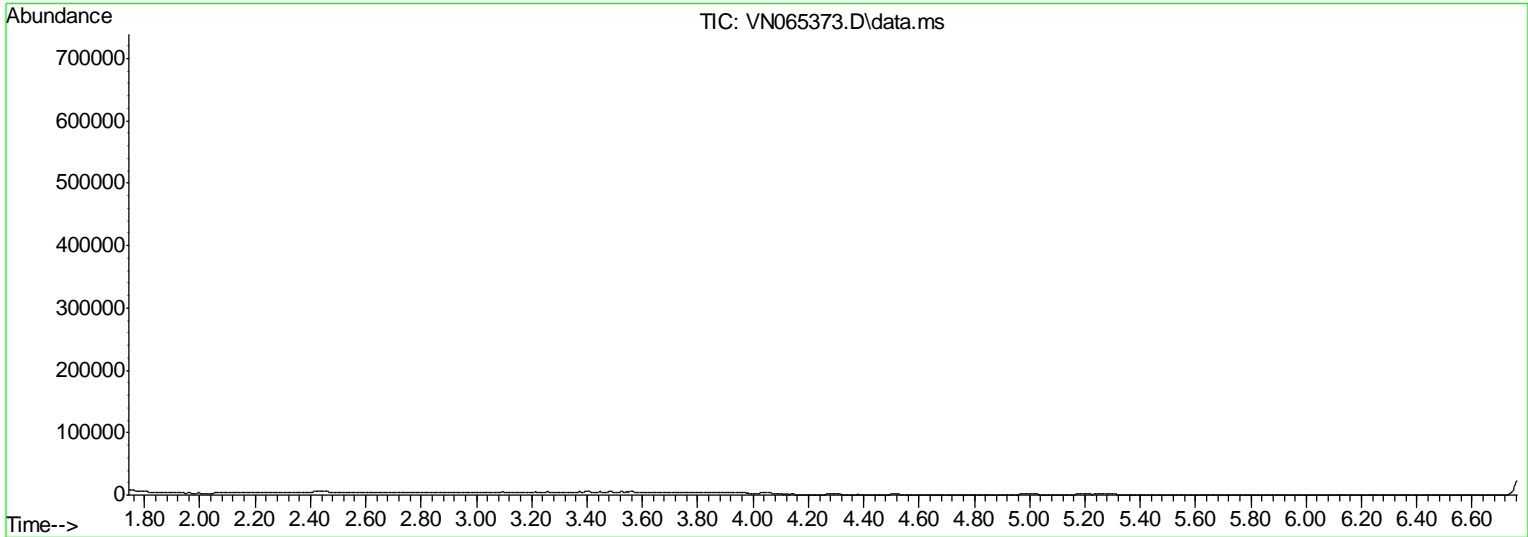
Sum of corrected areas: 7669897

Data Path : Z:\voasrv\HPCHEM1\MSVOA_N\Data\VN010421\
 Data File : VN065373.D
 Acq On : 4 Jan 2021 13:13
 Operator : JC/MD
 Sample : L5252-04
 Mi sc : 5.00mL/MSVOA_N/WATER
 ALS Vial : 8 Sample Multiplier: 1

Instrument :
 MSVOA_N
ClientSampleId :
 DUP

Quant Method : Z:\voasrv\HPCHEM1\MSVOA_N\methods\82N122220W.M
 Quant Title : SW846 8260

TIC Library : C:\DATABASE\NI ST11.L
 TIC Integration Parameters: LSCINT.P



Data Path : Z:\voasrv\HPCHEM1\MSVOA_N\Data\VN010421\
Data File : VN065373.D
Acq On : 4 Jan 2021 13:13
Operator : JC/MD
Sample : L5252-04
Misc : 5.00mL/MSVOA_N/WATER
ALS Vial : 8 Sample Multiplier: 1

Instrument :
MSVOA_N
ClientSampleId :
DUP

Quant Method : Z:\voasrv\HPCHEM1\MSVOA_N\methods\82N122220W.M
Quant Title : SW846 8260

TIC Library : C:\DATABASE\NI ST11.L
TIC Integration Parameters: LSCINT.P

No Library Search Compounds Detected

Data Path : Z:\voasrv\HPCHEM1\MSVOA_N\Data\VN010421\
Data File : VN065373.D
Acq On : 4 Jan 2021 13:13
Operator : JC/MD
Sample : L5252-04
Misc : 5.00mL/MSVOA_N/WATER
ALS Vial : 8 Sample Multiplier: 1

Instrument :
MSVOA_N
ClientSampleID :
DUP

Quant Method : Z:\voasrv\HPCHEM1\MSVOA_N\methods\82N122220W.M
Quant Title : SW846 8260

TIC Library : C:\DATABASE\NI ST11.L
TIC Integration Parameters: LSCINT.P

TIC Top Hit name	RT	EstConc	Units	Response	--Internal Standard--		
					#	RT	Resp Conc
