

Data Path : Z:\voasrv\HPCHEM1\MSVOA_N\Data\VN010422\
 Data File : VN070461.D
 Acq On : 4 Jan 2022 14:11
 Operator : JC/MD
 Sample : M5338-10DL 20X
 Misc : 5.00mL/MSVOA_N/WATER
 ALS Vial : 10 Sample Multiplier: 1

Instrument :
 MSVOA_N
 ClientSampleId :

Quant Time: Jan 05 03:16:04 2022
 Quant Method : Z:\voasrv\HPCHEM1\MSVOA_N\methods\82N122721W.M
 Quant Title : SW846 8260
 QLast Update : Mon Dec 27 18:47:12 2021
 Response via : Initial Calibration

Compound	R.T.	QIon	Response	Conc	Units	Dev(Min)

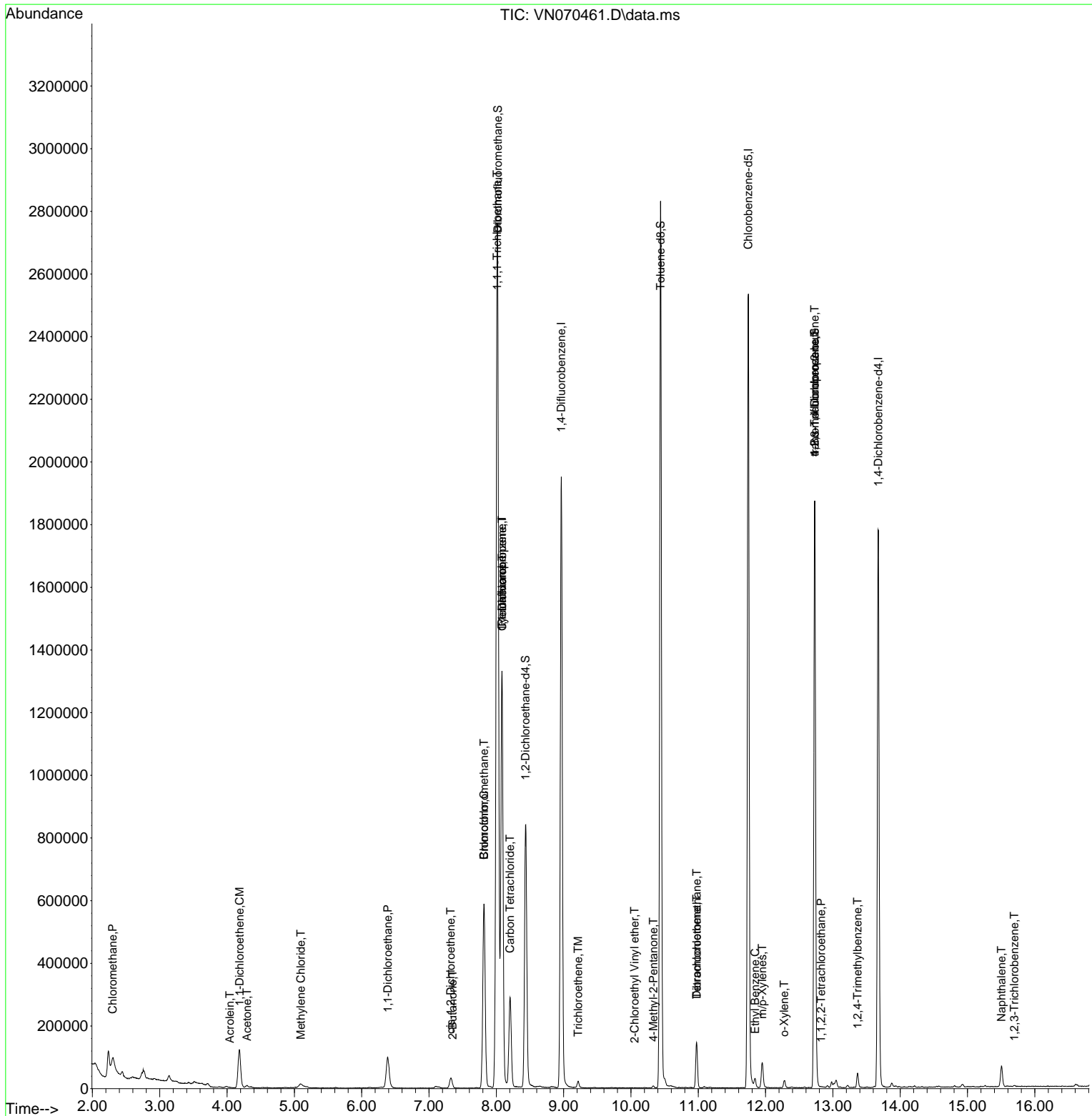
Internal Standards						
1) Pentafluorobenzene	8.083	168	1010261	50.000	ug/l	0.00
34) 1,4-Difluorobenzene	8.965	114	1687570	50.000	ug/l	0.00
63) Chlorobenzene-d5	11.744	117	1466540	50.000	ug/l	0.00
72) 1,4-Dichlorobenzene-d4	13.675	152	496538	50.000	ug/l	0.00
System Monitoring Compounds						
33) 1,2-Dichloroethane-d4	8.434	65	719071	49.504	ug/l	0.00
Spiked Amount	50.000	Range 61 - 141	Recovery	=	99.000%	
35) Dibromofluoromethane	8.021	113	514821	50.420	ug/l	0.00
Spiked Amount	50.000	Range 69 - 133	Recovery	=	100.840%	
50) Toluene-d8	10.440	98	1963394	47.071	ug/l	0.00
Spiked Amount	50.000	Range 65 - 126	Recovery	=	94.140%	
62) 4-Bromofluorobenzene	12.731	95	705022	46.798	ug/l	0.00
Spiked Amount	50.000	Range 58 - 135	Recovery	=	93.600%	
Target Compounds						
						Qvalue
3) Chloromethane	2.301	50	4806	0.308	ug/l #	87
12) 1,1-Dichloroethene	4.186	96	68104	6.619	ug/l	96
13) Acrolein	4.041	56	575	0.293	ug/l #	14
16) Acetone	4.296	43	6809	0.722	ug/l	92
20) Methylene Chloride	5.095	84	7878	0.604	ug/l	89
24) 1,1-Dichloroethane	6.385	63	146075	6.200	ug/l	98
25) 2-Butanone	7.351	43	3904	0.329	ug/l	93
27) cis-1,2-Dichloroethene	7.324	96	18497	1.423	ug/l	95
28) Bromochloromethane	7.817	49	51278	4.451	ug/l #	9
30) Chloroform	7.817	83	583766	25.684	ug/l	99
31) Cyclohexane	8.086	56	22953	1.001	ug/l #	1
32) 1,1,1-Trichloroethane	8.013	97	1724009	89.961	ug/l	96
36) 1,1-Dichloropropene	8.086	75	81853	4.846	ug/l #	48
38) Carbon Tetrachloride	8.204	117	213607	13.244	ug/l	98
44) Trichloroethene	9.215	130	7358	0.598	ug/l	93
51) 4-Methyl-2-Pentanone	10.333	43	4661	0.215	ug/l	96
58) 2-Chloroethyl Vinyl ether	10.054	63	100	18.531	ug/l #	45
60) Dibromochloromethane	10.977	129	33678	2.783	ug/l #	11
64) Tetrachloroethene	10.977	164	34301	3.230	ug/l	92
67) Ethyl Benzene	11.843	91	21475	0.377	ug/l	99
68) m/p-Xylenes	11.953	106	27137	1.308	ug/l	95
69) o-Xylene	12.275	106	6810	0.330	ug/l	88
75) 1,1,2,2-Tetrachloroethane	12.825	83	1108	0.513	ug/l #	73
76) 1,2,3-Trichloropropane	12.731	75	368622	26.439	ug/l #	1
81) trans-1,4-Dichloro-2-b...	12.731	75	368622	90.702	ug/l #	5
84) 1,2,4-Trimethylbenzene	13.366	105	27924	0.785	ug/l	97
95) Naphthalene	15.504	128	65555	4.590	ug/l	100
96) 1,2,3-Trichlorobenzene	15.694	180	752	0.921	ug/l	88

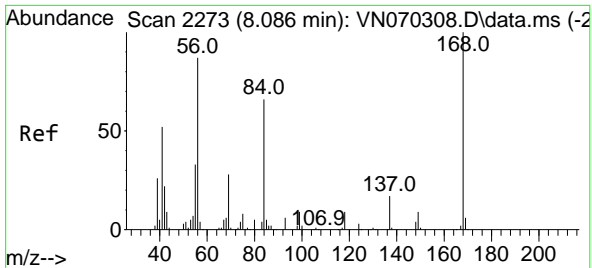
(#) = qualifier out of range (m) = manual integration (+) = signals summed

Data Path : Z:\voasrv\HPCHEM1\MSVOA_N\Data\VN010422\
 Data File : VN070461.D
 Acq On : 4 Jan 2022 14:11
 Operator : JC/MD
 Sample : M5338-10DL 20X
 Misc : 5.00mL/MSVOA_N/WATER
 ALS Vial : 10 Sample Multiplier: 1

Instrument :
 MSVOA_N
 ClientSampleId :

Quant Time: Jan 05 03:16:04 2022
 Quant Method : Z:\voasrv\HPCHEM1\MSVOA_N\methods\82N122721W.M
 Quant Title : SW846 8260
 QLast Update : Mon Dec 27 18:47:12 2021
 Response via : Initial Calibration

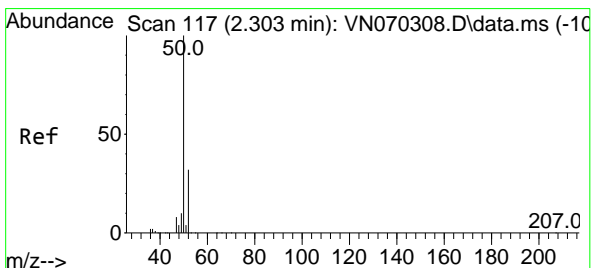
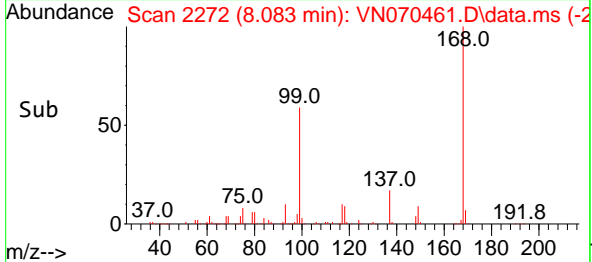
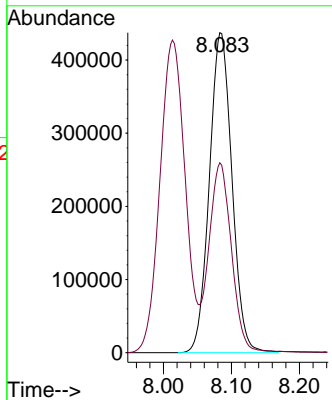
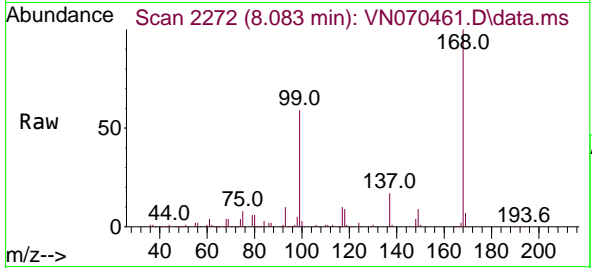




#1
 Pentafluorobenzene
 Concen: 50.000 ug/l
 RT: 8.083 min Scan# 21
 Delta R.T. -0.003 min
 Lab File: VN070461.D
 Acq: 4 Jan 2022 14:11

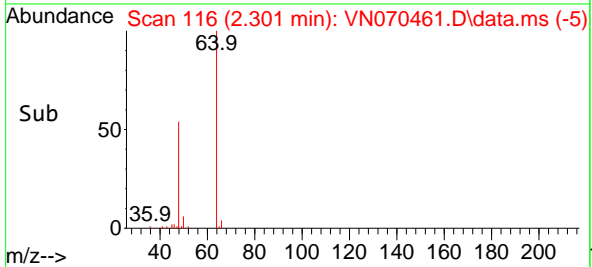
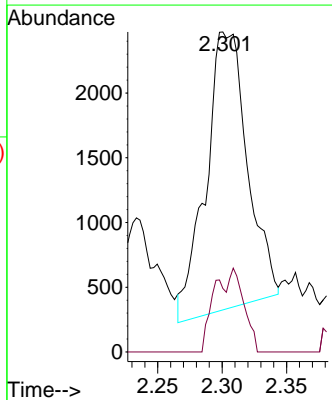
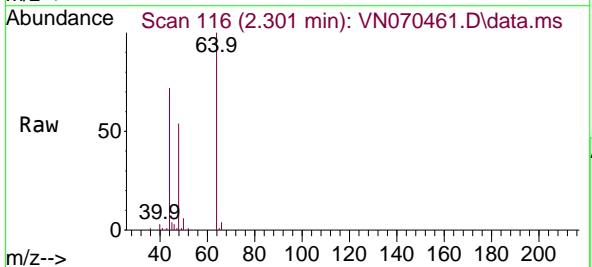
Instrument :
 MSVOA_N
 ClientSampleId :

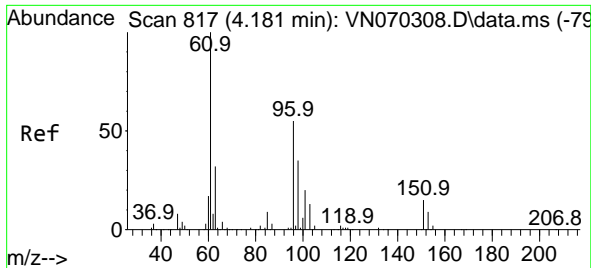
Tgt Ion:168 Resp: 1010261
 Ion Ratio Lower Upper
 168 100
 99 58.9 41.3 61.9



#3
 Chloromethane
 Concen: 0.308 ug/l
 RT: 2.301 min Scan# 116
 Delta R.T. -0.002 min
 Lab File: VN070461.D
 Acq: 4 Jan 2022 14:11

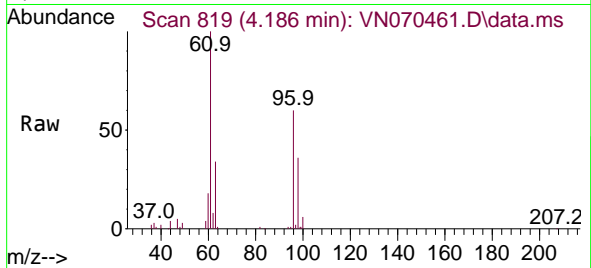
Tgt Ion: 50 Resp: 4806
 Ion Ratio Lower Upper
 50 100
 52 24.2 25.4 38.0#



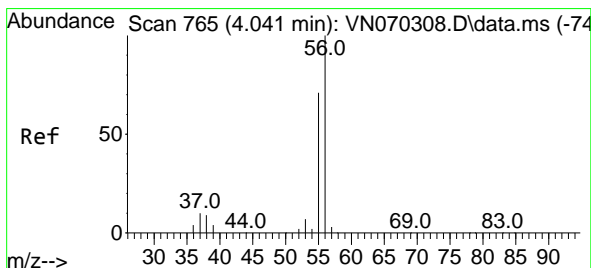
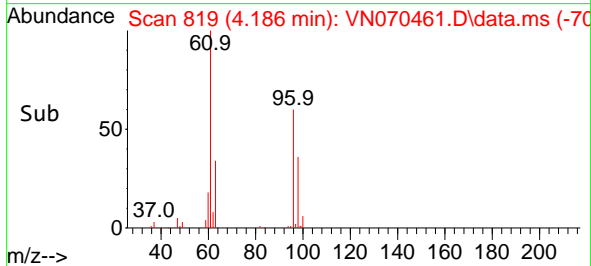
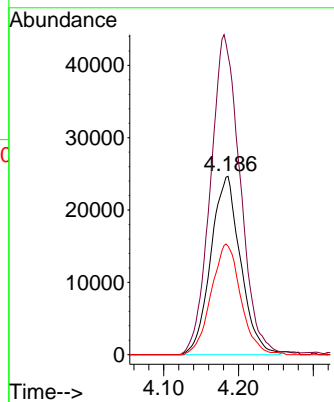


#12
 1,1-Dichloroethene
 Concen: 6.619 ug/l
 RT: 4.186 min Scan# 817
 Delta R.T. 0.005 min
 Lab File: VN070461.D
 Acq: 4 Jan 2022 14:11

Instrument :
 MSVOA_N
 ClientSampleId :

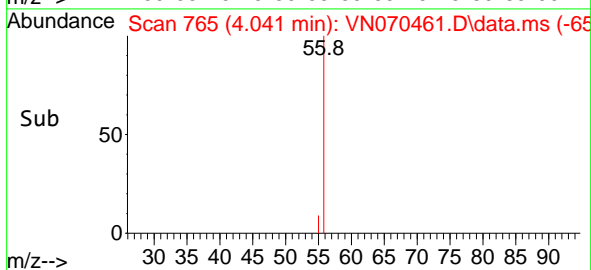
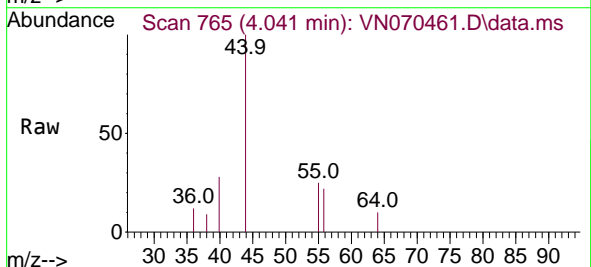
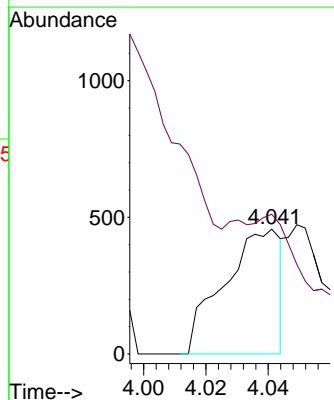


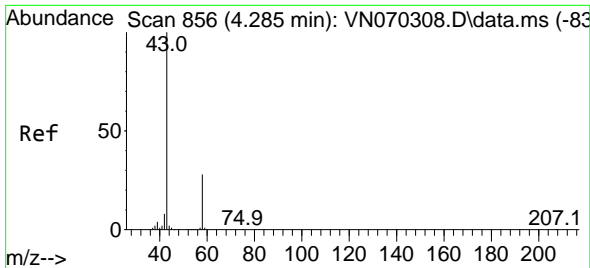
Tgt Ion: 96 Resp: 68104
 Ion Ratio Lower Upper
 96 100
 61 167.9 131.0 196.6
 98 60.8 52.4 78.6



#13
 Acrolein
 Concen: 0.293 ug/l
 RT: 4.041 min Scan# 765
 Delta R.T. 0.000 min
 Lab File: VN070461.D
 Acq: 4 Jan 2022 14:11

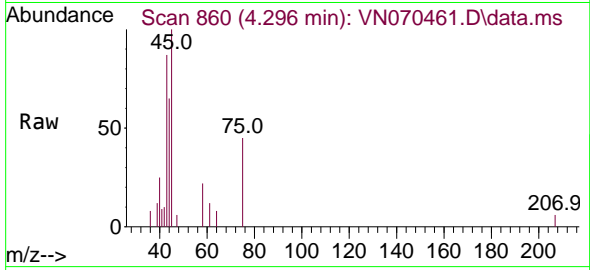
Tgt Ion: 56 Resp: 575
 Ion Ratio Lower Upper
 56 100
 55 0.0 56.6 85.0#



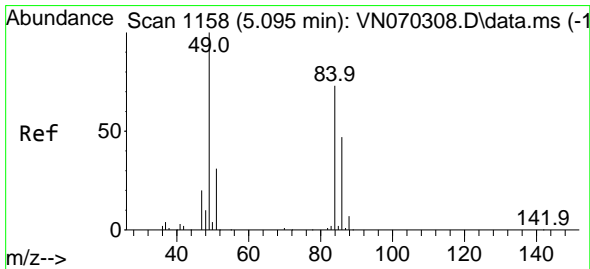
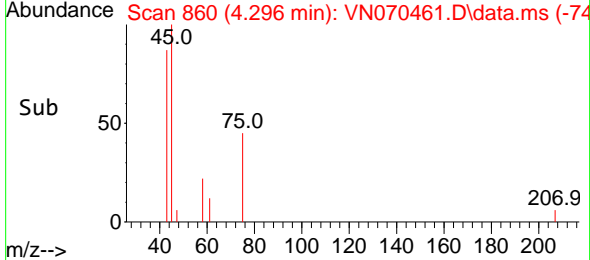
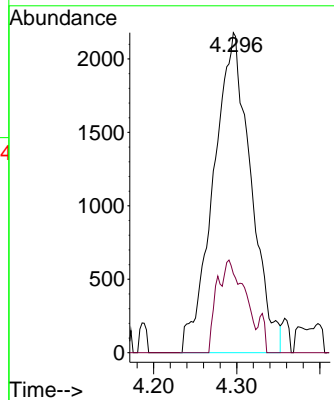


#16
 Acetone
 Concen: 0.722 ug/l
 RT: 4.296 min Scan# 80
 Delta R.T. 0.011 min
 Lab File: VN070461.D
 Acq: 4 Jan 2022 14:11

Instrument :
 MSVOA_N
 ClientSampleId :

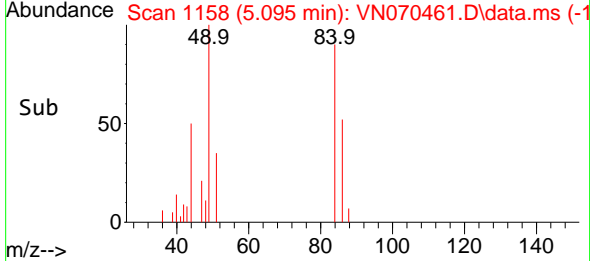
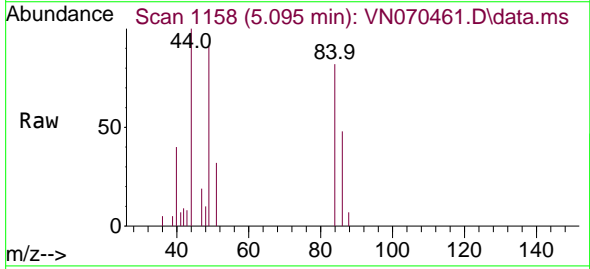
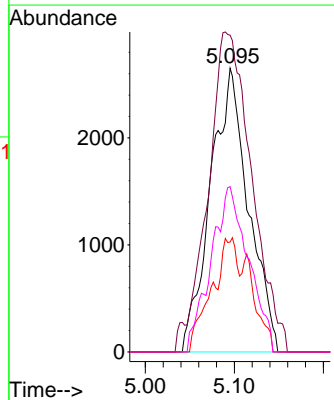


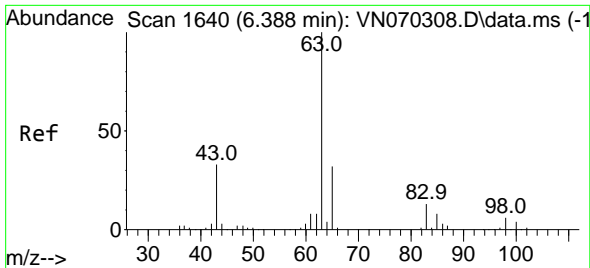
Tgt Ion: 43 Resp: 6809
 Ion Ratio Lower Upper
 43 100
 58 24.7 23.1 34.7



#20
 Methylene Chloride
 Concen: 0.604 ug/l
 RT: 5.095 min Scan# 1158
 Delta R.T. 0.000 min
 Lab File: VN070461.D
 Acq: 4 Jan 2022 14:11

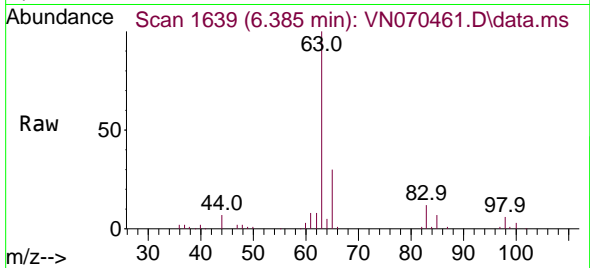
Tgt Ion: 84 Resp: 7878
 Ion Ratio Lower Upper
 84 100
 49 101.5 93.5 140.3
 51 38.8 29.4 44.2
 86 58.3 53.0 79.4





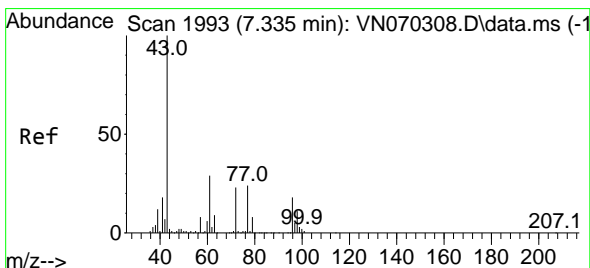
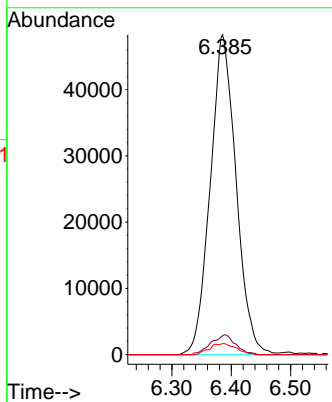
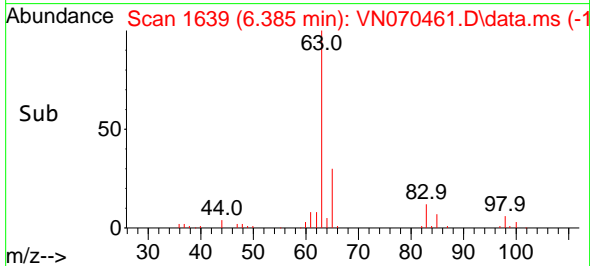
#24
 1,1-Dichloroethane
 Concen: 6.200 ug/l
 RT: 6.385 min Scan# 1639
 Delta R.T. -0.003 min
 Lab File: VN070461.D
 Acq: 4 Jan 2022 14:11

Instrument : MSVOA_N
 ClientSampleId :

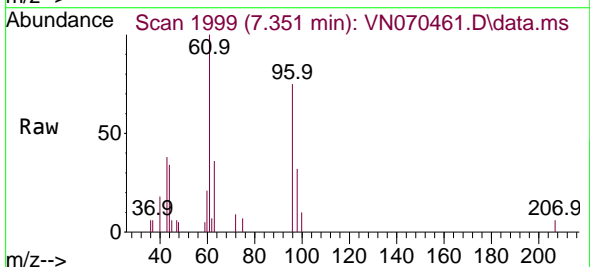


Tgt Ion: 63 Resp: 146075

Ion	Ratio	Lower	Upper
63	100		
98	5.9	3.3	9.9
100	3.4	2.1	6.5

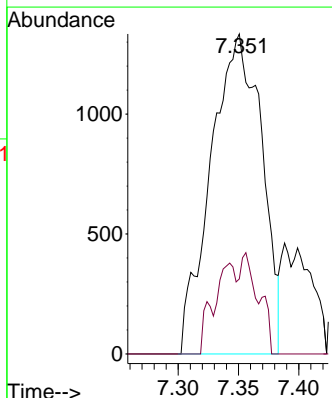
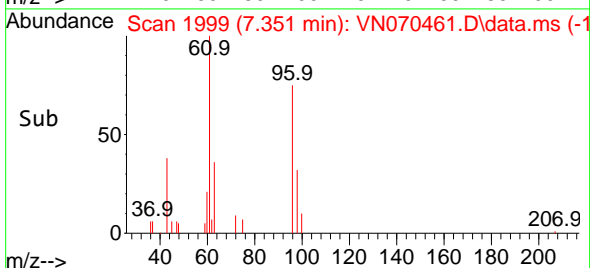


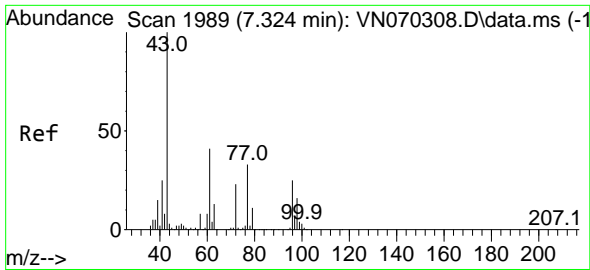
#25
 2-Butanone
 Concen: 0.329 ug/l
 RT: 7.351 min Scan# 1999
 Delta R.T. 0.016 min
 Lab File: VN070461.D
 Acq: 4 Jan 2022 14:11



Tgt Ion: 43 Resp: 3904

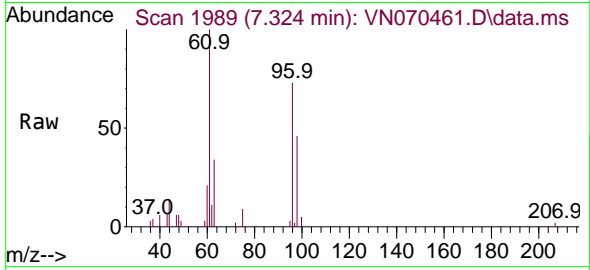
Ion	Ratio	Lower	Upper
43	100		
72	23.5	21.7	32.5



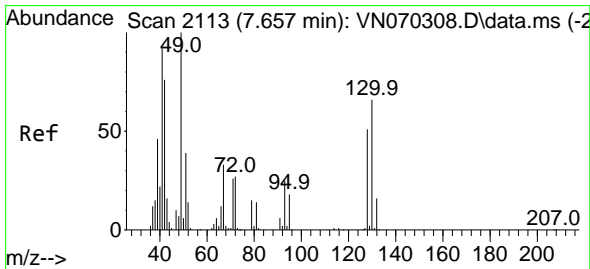
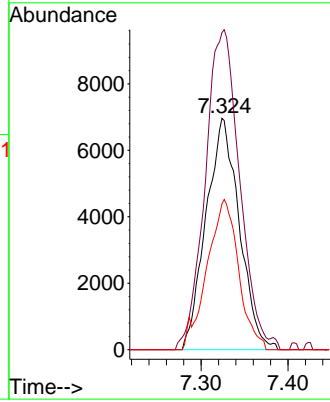
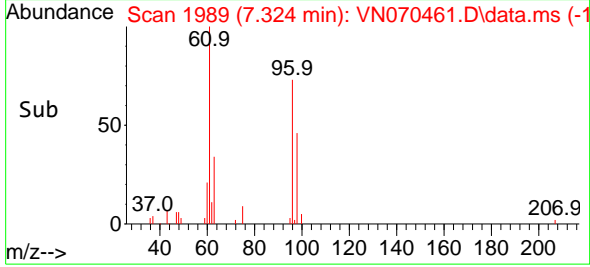


#27
 cis-1,2-Dichloroethene
 Concen: 1.423 ug/l
 RT: 7.324 min Scan# 1989
 Delta R.T. -0.000 min
 Lab File: VN070461.D
 Acq: 4 Jan 2022 14:11

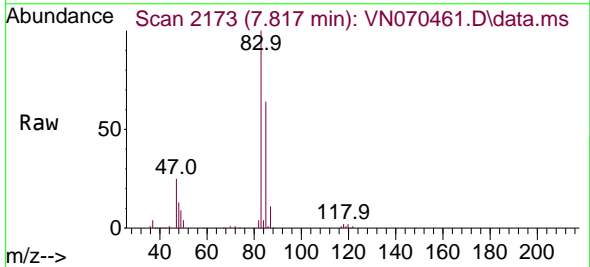
Instrument : MSVOA_N
 ClientSampleId :



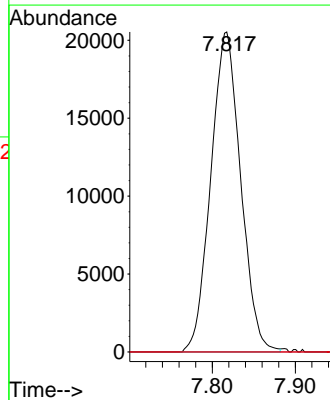
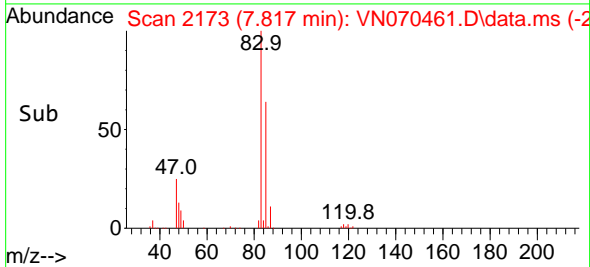
Tgt Ion: 96 Resp: 18497
 Ion Ratio Lower Upper
 96 100
 61 142.5 0.0 275.0
 98 58.6 0.0 129.6

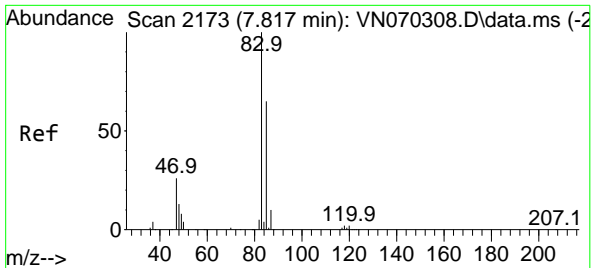


#28
 Bromochloromethane
 Concen: 4.451 ug/l
 RT: 7.817 min Scan# 2173
 Delta R.T. 0.160 min
 Lab File: VN070461.D
 Acq: 4 Jan 2022 14:11



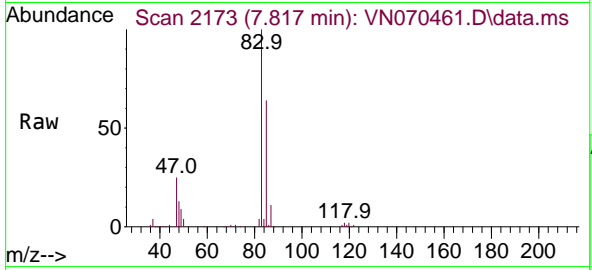
Tgt Ion: 49 Resp: 51278
 Ion Ratio Lower Upper
 49 100
 129 0.0 0.0 4.0
 130 0.0 67.8 101.8#



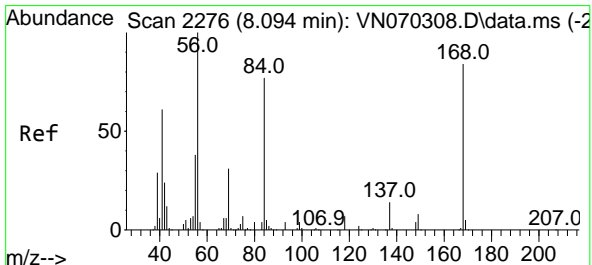
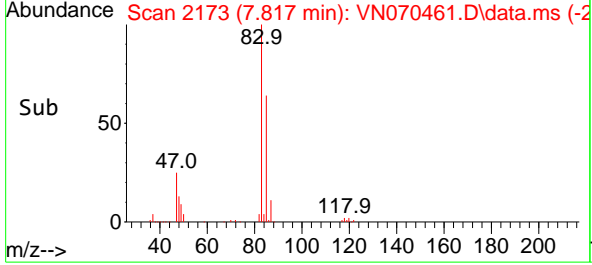
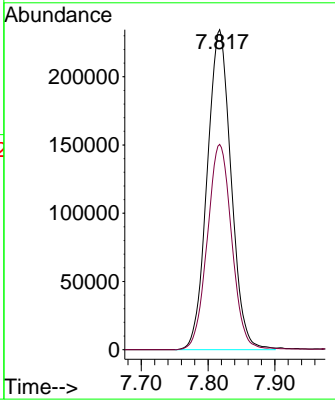


#30
 Chloroform
 Concen: 25.684 ug/l
 RT: 7.817 min Scan# 2173
 Delta R.T. 0.000 min
 Lab File: VN070461.D
 Acq: 4 Jan 2022 14:11

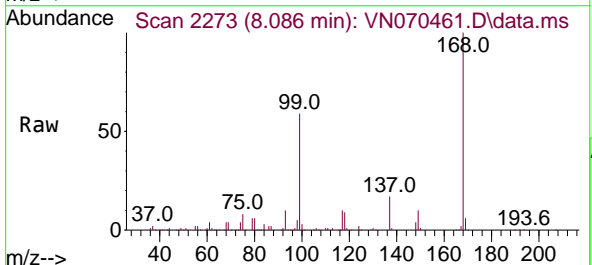
Instrument : MSVOA_N
 ClientSampleId :



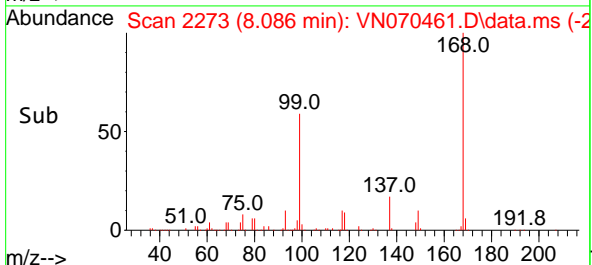
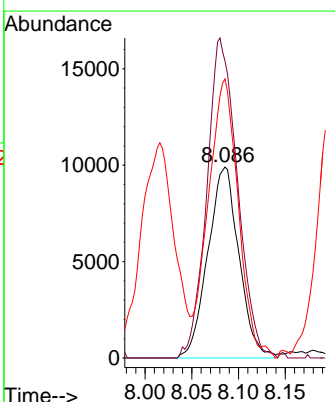
Tgt Ion: 83 Resp: 583766
 Ion Ratio Lower Upper
 83 100
 85 64.1 51.9 77.9

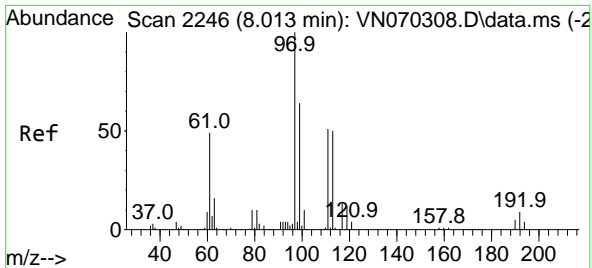


#31
 Cyclohexane
 Concen: 1.001 ug/l
 RT: 8.086 min Scan# 2273
 Delta R.T. -0.008 min
 Lab File: VN070461.D
 Acq: 4 Jan 2022 14:11



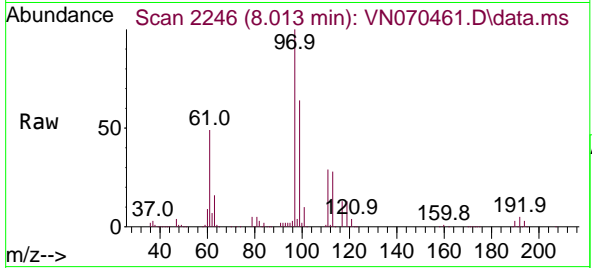
Tgt Ion: 56 Resp: 22953
 Ion Ratio Lower Upper
 56 100
 69 155.6 27.1 40.7#
 84 146.1 73.4 110.0#



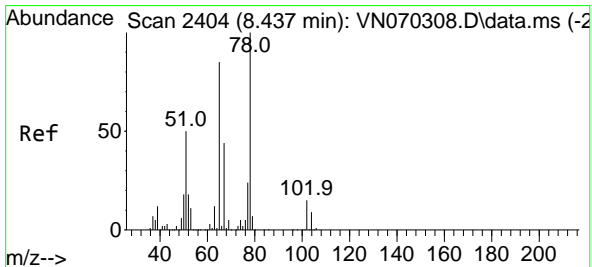
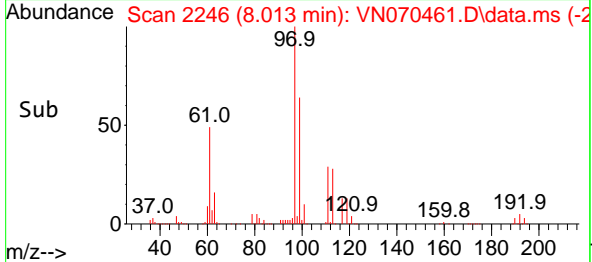
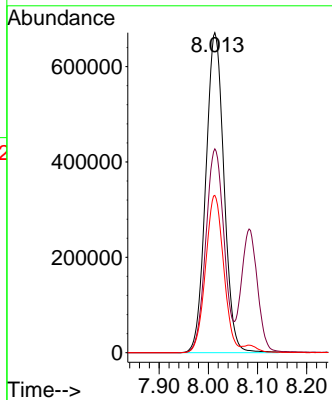


#32
 1,1,1-Trichloroethane
 Concen: 89.961 ug/l
 RT: 8.013 min Scan# 21
 Delta R.T. 0.000 min
 Lab File: VN070461.D
 Acq: 4 Jan 2022 14:11

Instrument :
 MSVOA_N
 ClientSampleId :

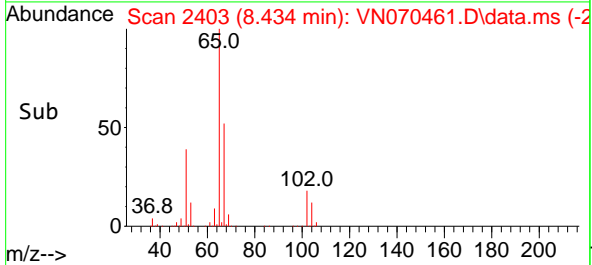
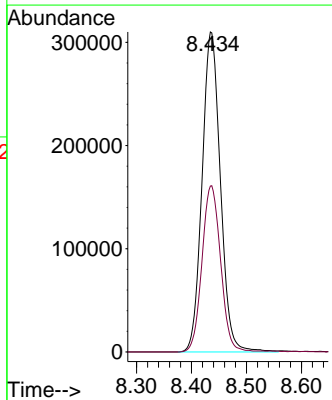
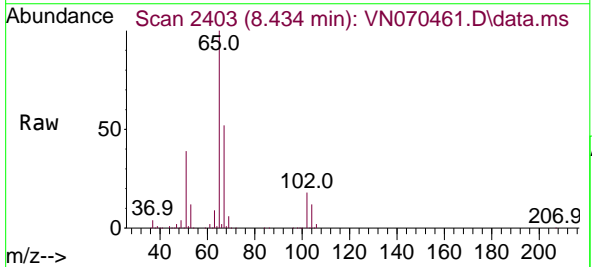


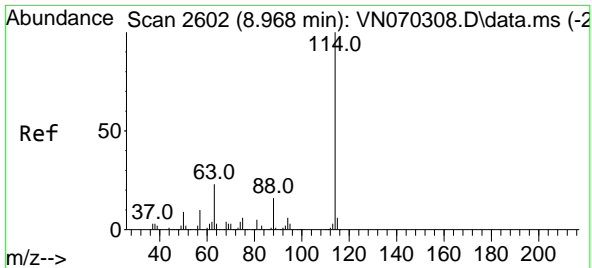
Tgt Ion: 97 Resp: 1724009
 Ion Ratio Lower Upper
 97 100
 99 64.1 50.1 75.1
 61 48.9 35.2 52.8



#33
 1,2-Dichloroethane-d4
 Concen: 49.504 ug/l
 RT: 8.434 min Scan# 2403
 Delta R.T. -0.003 min
 Lab File: VN070461.D
 Acq: 4 Jan 2022 14:11

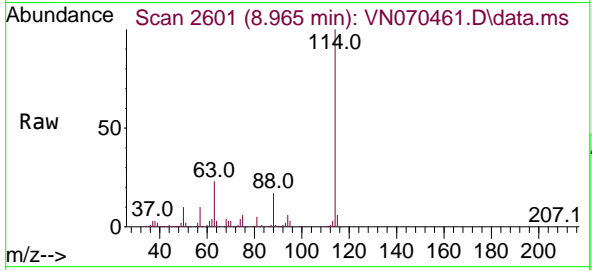
Tgt Ion: 65 Resp: 719071
 Ion Ratio Lower Upper
 65 100
 67 52.6 0.0 103.0





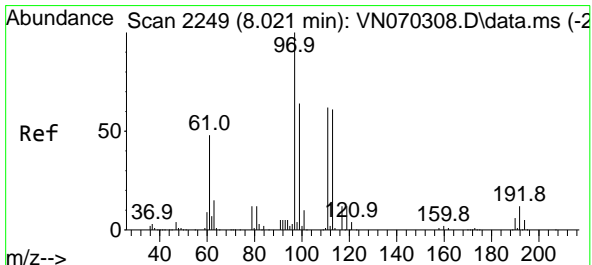
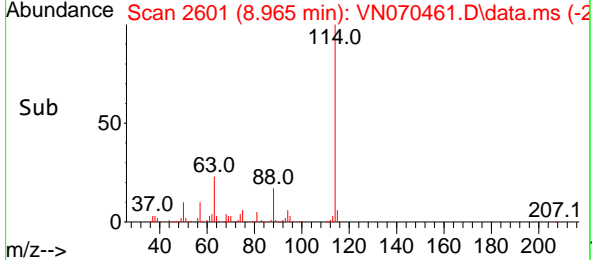
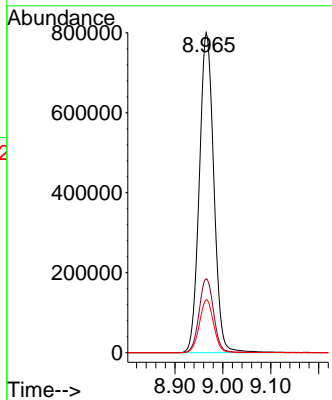
#34
 1,4-Difluorobenzene
 Concen: 50.000 ug/l
 RT: 8.965 min Scan# 2601
 Delta R.T. -0.003 min
 Lab File: VN070461.D
 Acq: 4 Jan 2022 14:11

Instrument : MSVOA_N
 ClientSampleId :



Tgt Ion:114 Resp: 1687570

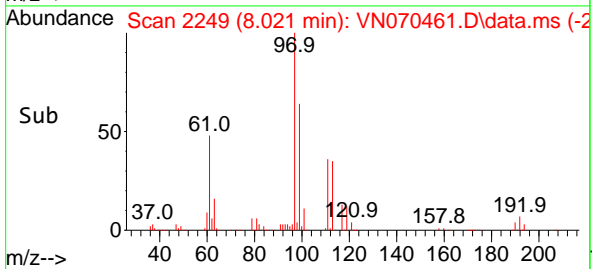
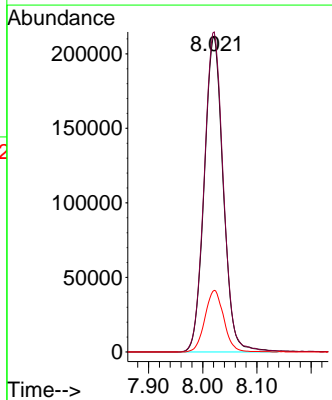
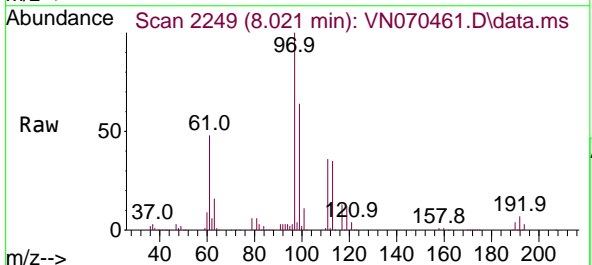
Ion	Ratio	Lower	Upper
114	100		
63	23.1	0.0	37.8
88	16.6	0.0	27.4

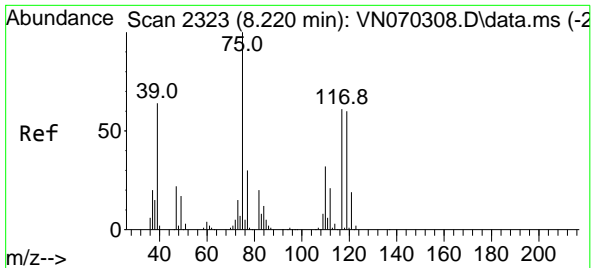


#35
 Dibromofluoromethane
 Concen: 50.420 ug/l
 RT: 8.021 min Scan# 2249
 Delta R.T. 0.000 min
 Lab File: VN070461.D
 Acq: 4 Jan 2022 14:11

Tgt Ion:113 Resp: 514821

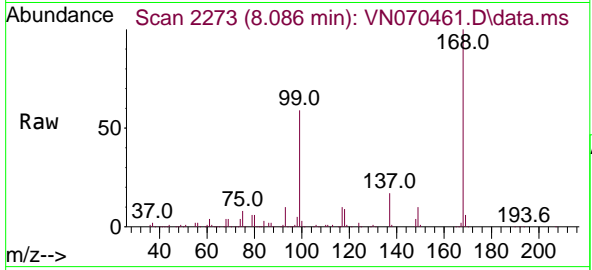
Ion	Ratio	Lower	Upper
113	100		
111	102.4	82.2	123.2
192	19.4	16.9	25.3





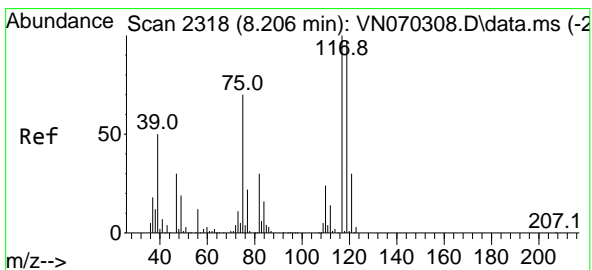
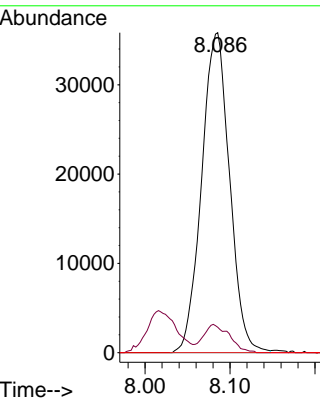
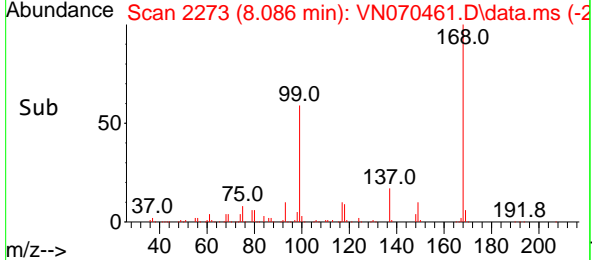
#36
 1,1-Dichloropropene
 Concen: 4.846 ug/l
 RT: 8.086 min Scan# 2117
 Delta R.T. -0.134 min
 Lab File: VN070461.D
 Acq: 4 Jan 2022 14:11

Instrument : MSVOA_N
 ClientSampleId :

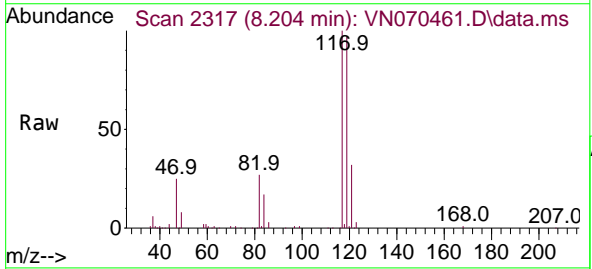


Tgt Ion: 75 Resp: 81853

Ion	Ratio	Lower	Upper
75	100		
110	8.3	18.4	55.2#
77	0.0	24.4	36.6#

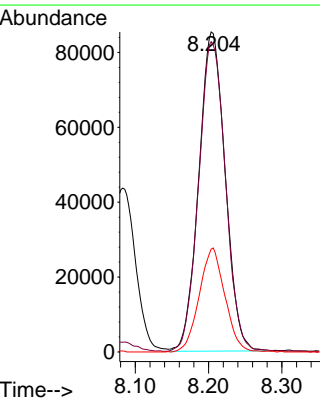
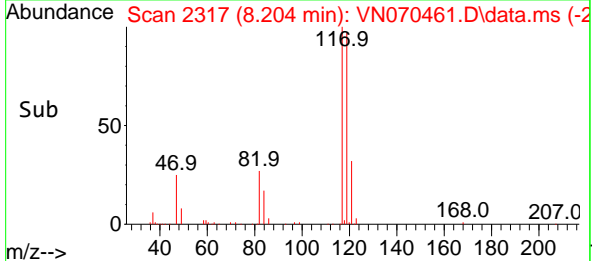


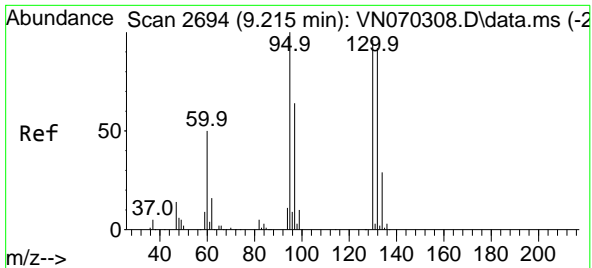
#38
 Carbon Tetrachloride
 Concen: 13.244 ug/l
 RT: 8.204 min Scan# 2317
 Delta R.T. -0.002 min
 Lab File: VN070461.D
 Acq: 4 Jan 2022 14:11



Tgt Ion: 117 Resp: 213607

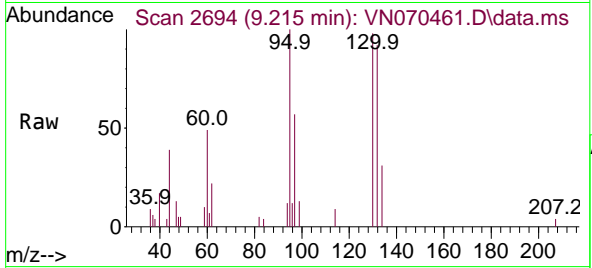
Ion	Ratio	Lower	Upper
117	100		
119	96.9	76.1	114.1
121	32.3	24.2	36.2



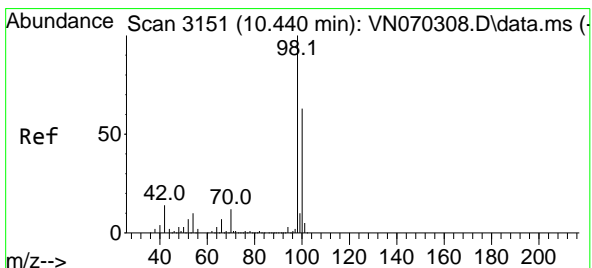
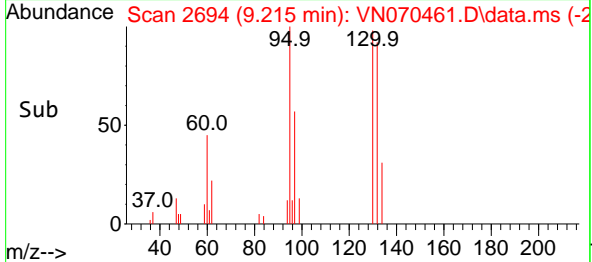
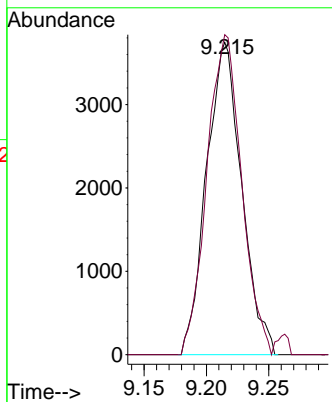


#44
 Trichloroethene
 Concen: 0.598 ug/l
 RT: 9.215 min Scan# 20
 Delta R.T. -0.000 min
 Lab File: VN070461.D
 Acq: 4 Jan 2022 14:11

Instrument :
 MSVOA_N
 ClientSampleId :

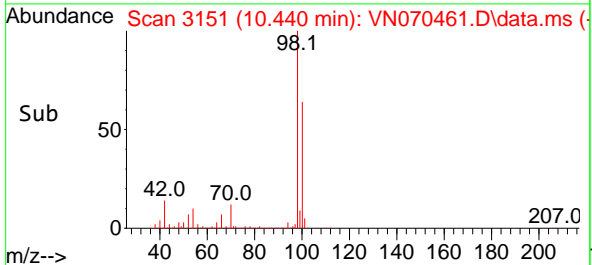
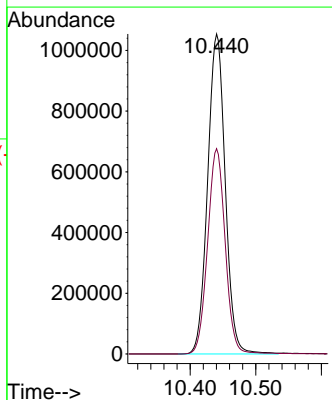
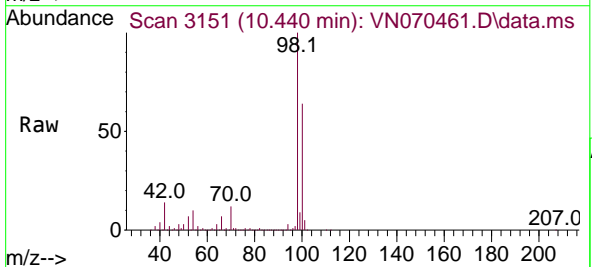


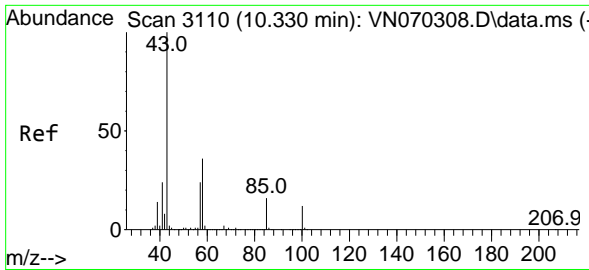
Tgt Ion:130 Resp: 7358
 Ion Ratio Lower Upper
 130 100
 95 102.5 0.0 191.2



#50
 Toluene-d8
 Concen: 47.071 ug/l
 RT: 10.440 min Scan# 3151
 Delta R.T. 0.000 min
 Lab File: VN070461.D
 Acq: 4 Jan 2022 14:11

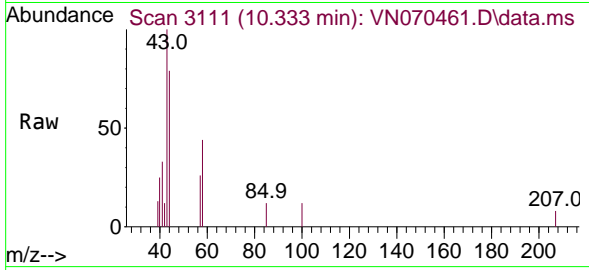
Tgt Ion: 98 Resp: 1963394
 Ion Ratio Lower Upper
 98 100
 100 64.0 50.4 75.6



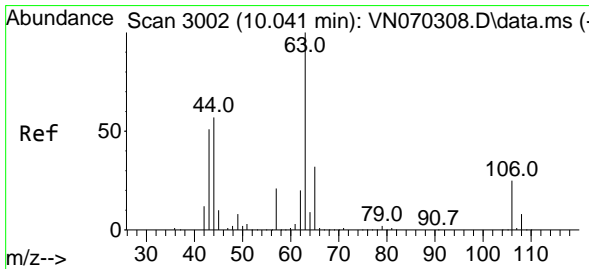
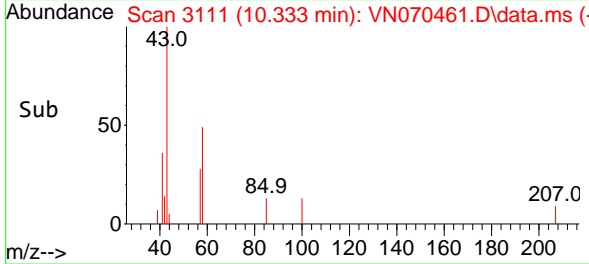
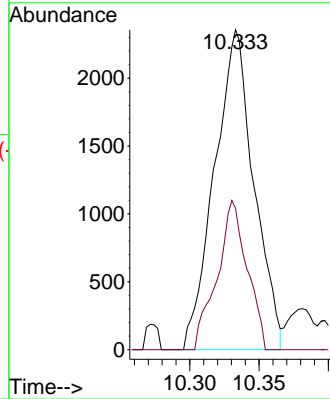


#51
 4-Methyl-2-Pentanone
 Concen: 0.215 ug/l
 RT: 10.333 min Scan# 3111
 Delta R.T. 0.003 min
 Lab File: VN070461.D
 Acq: 4 Jan 2022 14:11

Instrument : MSVOA_N
 ClientSampleId :

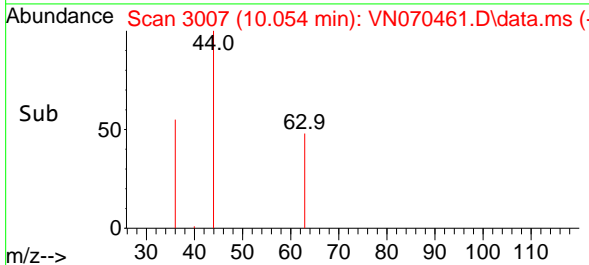
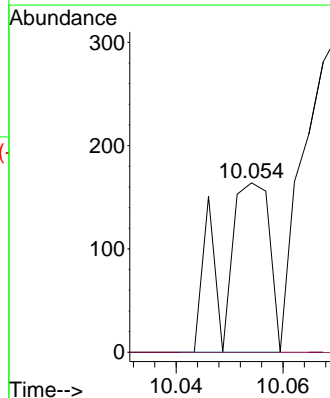
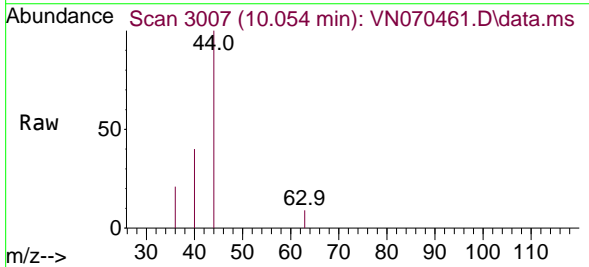


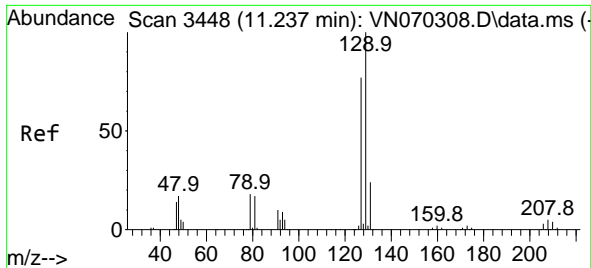
Tgt Ion: 43 Resp: 4661
 Ion Ratio Lower Upper
 43 100
 58 35.4 30.4 45.6



#58
 2-Chloroethyl Vinyl ether
 Concen: 18.531 ug/l
 RT: 10.054 min Scan# 3007
 Delta R.T. 0.013 min
 Lab File: VN070461.D
 Acq: 4 Jan 2022 14:11

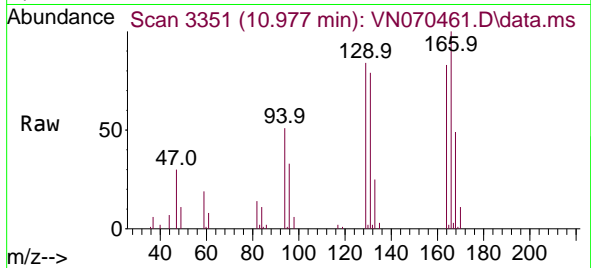
Tgt Ion: 63 Resp: 100
 Ion Ratio Lower Upper
 63 100
 106 0.0 23.9 35.9#



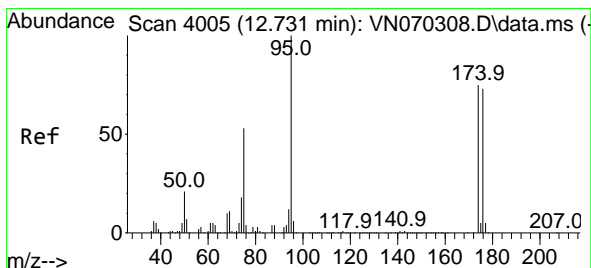
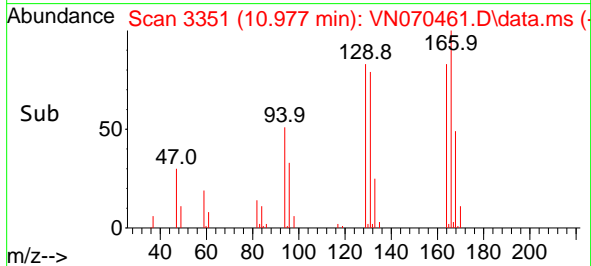
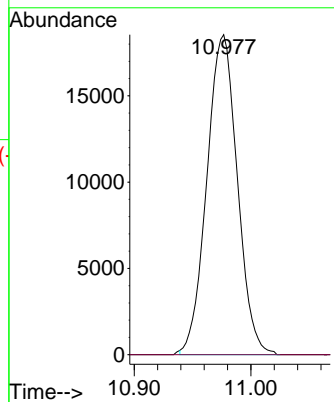


#60
 Dibromochloromethane
 Concen: 2.783 ug/l
 RT: 10.977 min Scan# 31
 Delta R.T. -0.260 min
 Lab File: VN070461.D
 Acq: 4 Jan 2022 14:11

Instrument :
 MSVOA_N
 ClientSampleId :

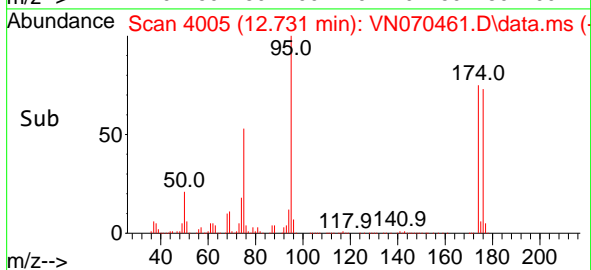
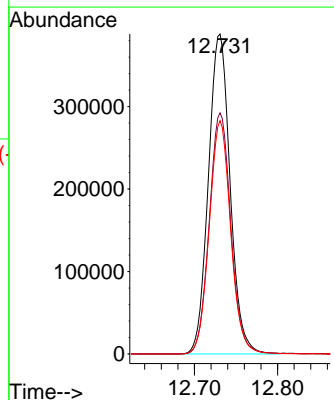
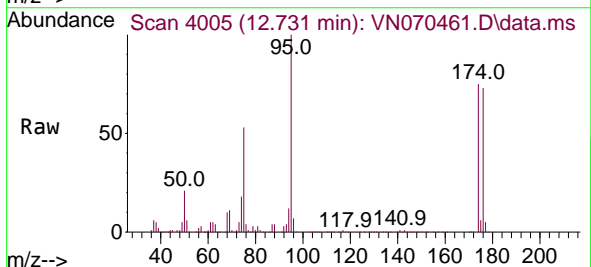


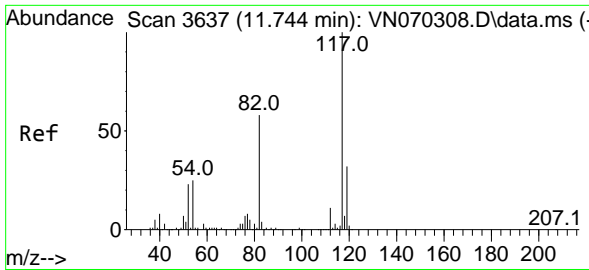
Tgt Ion:129 Resp: 33678
 Ion Ratio Lower Upper
 129 100
 127 0.0 38.6 116.0#



#62
 4-Bromofluorobenzene
 Concen: 46.798 ug/l
 RT: 12.731 min Scan# 4005
 Delta R.T. -0.000 min
 Lab File: VN070461.D
 Acq: 4 Jan 2022 14:11

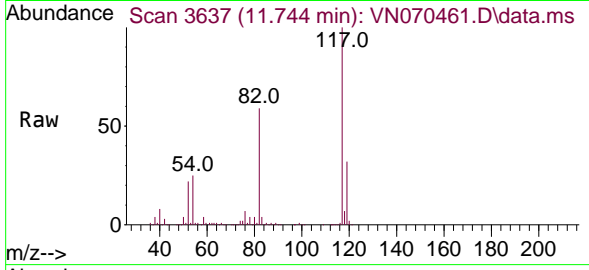
Tgt Ion: 95 Resp: 705022
 Ion Ratio Lower Upper
 95 100
 174 75.0 0.0 187.2
 176 71.9 0.0 181.4



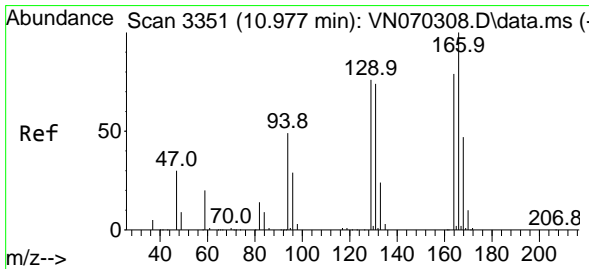
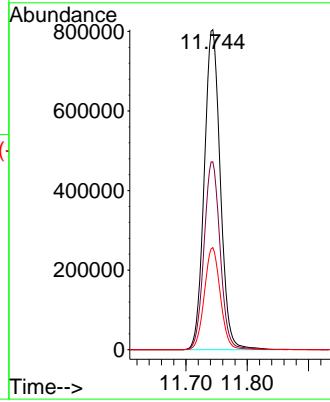
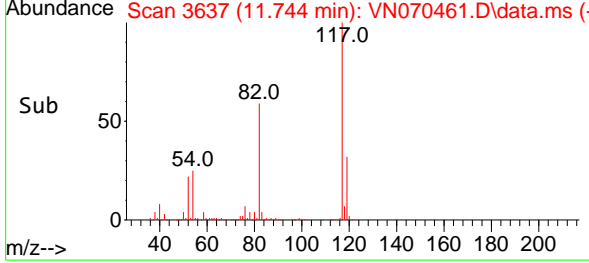


#63
 Chlorobenzene-d5
 Concen: 50.000 ug/l
 RT: 11.744 min Scan# 3637
 Delta R.T. -0.000 min
 Lab File: VN070461.D
 Acq: 4 Jan 2022 14:11

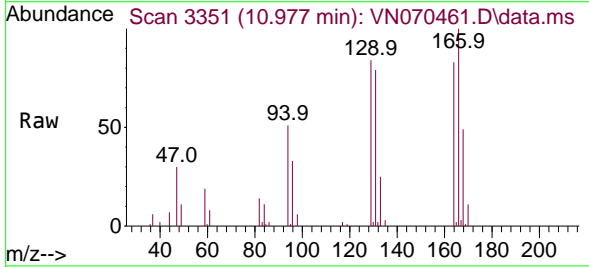
Instrument : MSVOA_N
 ClientSampleId :



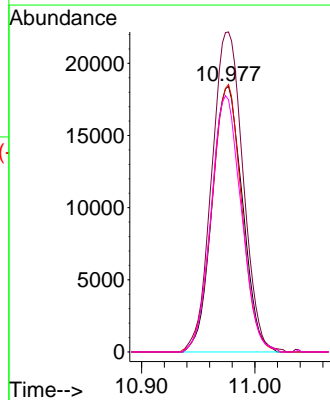
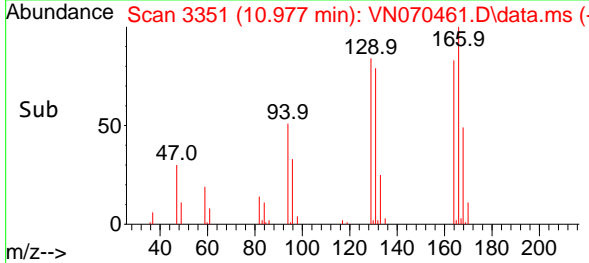
Tgt Ion:117 Resp: 1466540
 Ion Ratio Lower Upper
 117 100
 82 58.7 42.4 63.6
 119 31.9 25.4 38.2

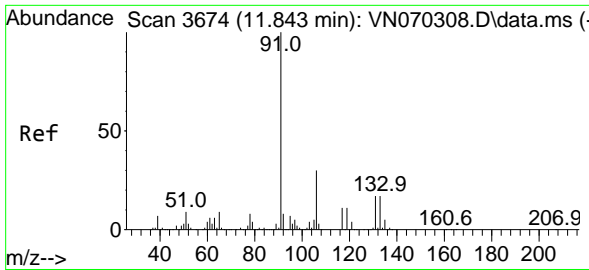


#64
 Tetrachloroethene
 Concen: 3.230 ug/l
 RT: 10.977 min Scan# 3351
 Delta R.T. -0.000 min
 Lab File: VN070461.D
 Acq: 4 Jan 2022 14:11



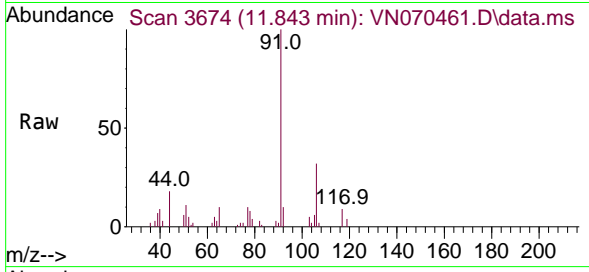
Tgt Ion:164 Resp: 34301
 Ion Ratio Lower Upper
 164 100
 166 120.5 101.9 152.9
 129 100.7 72.0 108.0
 131 95.0 70.9 106.3



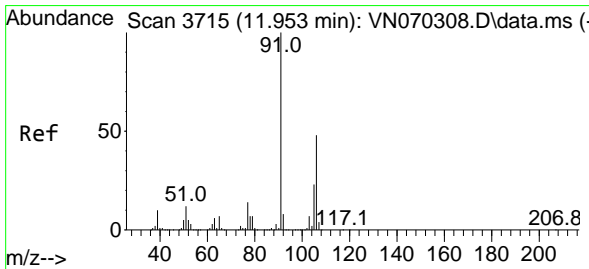
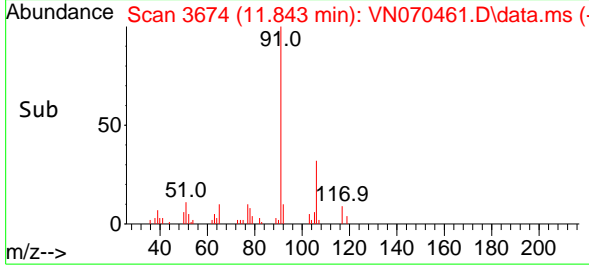
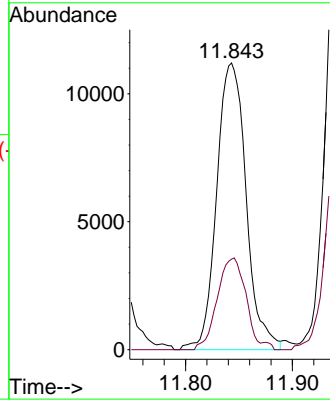


#67
 Ethyl Benzene
 Concen: 0.377 ug/l
 RT: 11.843 min Scan# 3674
 Delta R.T. -0.000 min
 Lab File: VN070461.D
 Acq: 4 Jan 2022 14:11

Instrument : MSVOA_N
 ClientSampleId :

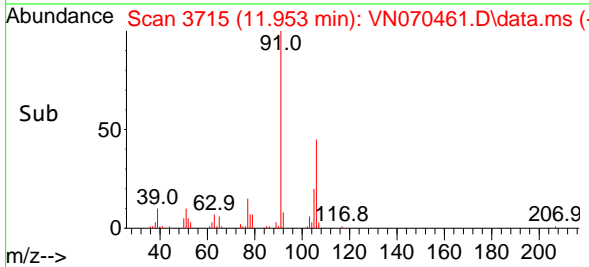
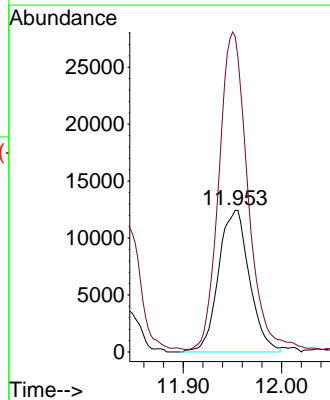
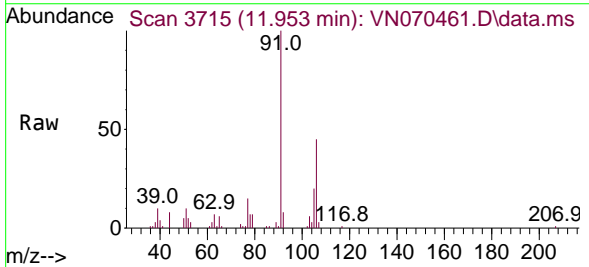


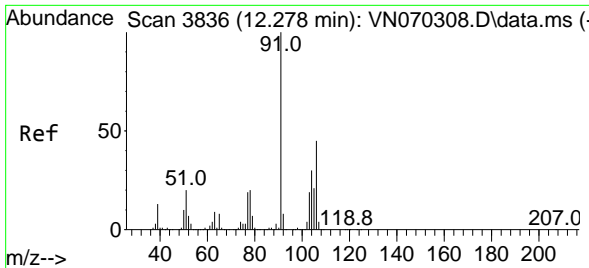
Tgt Ion: 91 Resp: 21475
 Ion Ratio Lower Upper
 91 100
 106 31.6 25.7 38.5



#68
 m/p-Xylenes
 Concen: 1.308 ug/l
 RT: 11.953 min Scan# 3715
 Delta R.T. -0.000 min
 Lab File: VN070461.D
 Acq: 4 Jan 2022 14:11

Tgt Ion: 106 Resp: 27137
 Ion Ratio Lower Upper
 106 100
 91 208.7 160.6 240.8

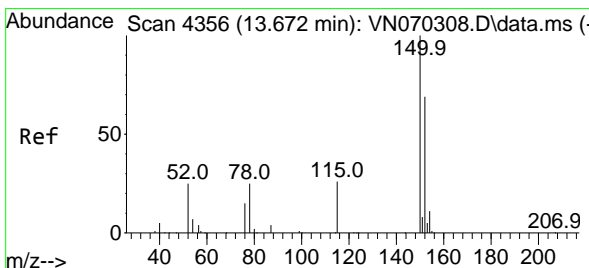
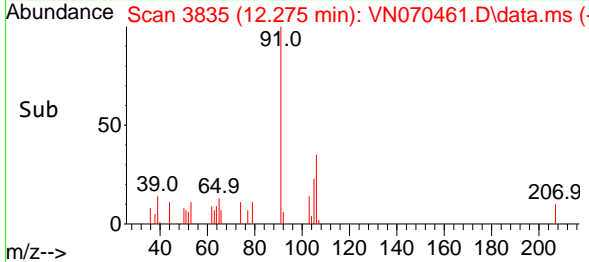
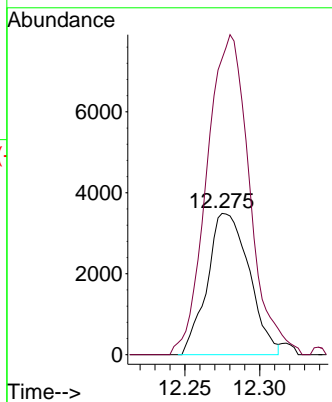
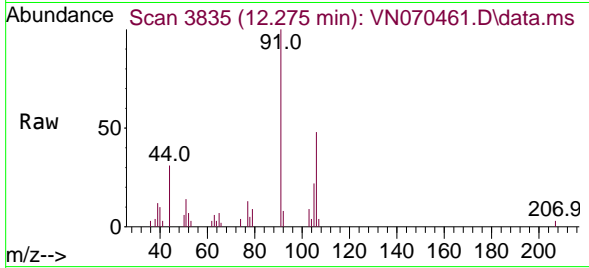




#69
 o-Xylene
 Concen: 0.330 ug/l
 RT: 12.275 min Scan# 3835
 Delta R.T. -0.003 min
 Lab File: VN070461.D
 Acq: 4 Jan 2022 14:11

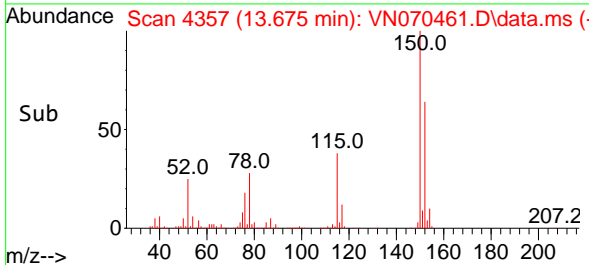
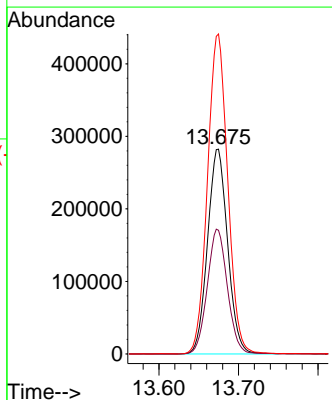
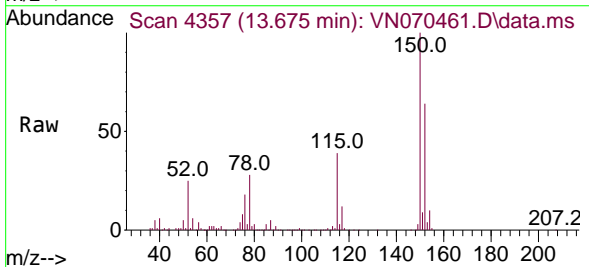
Instrument : MSVOA_N
 ClientSampleId :

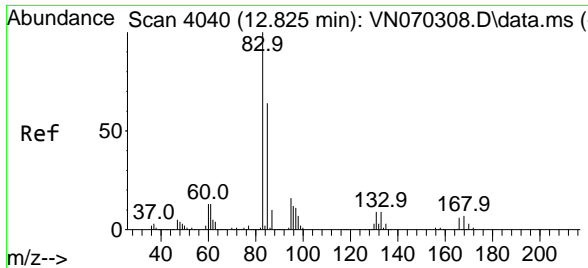
Tgt Ion:106 Resp: 6810
 Ion Ratio Lower Upper
 106 100
 91 230.1 105.8 317.3



#72
 1,4-Dichlorobenzene-d4
 Concen: 50.000 ug/l
 RT: 13.675 min Scan# 4357
 Delta R.T. 0.003 min
 Lab File: VN070461.D
 Acq: 4 Jan 2022 14:11

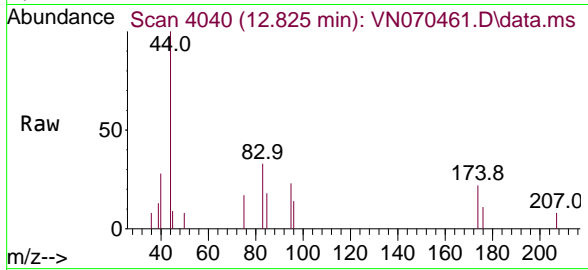
Tgt Ion:152 Resp: 496538
 Ion Ratio Lower Upper
 152 100
 115 60.8 27.5 82.5
 150 157.0 0.0 344.4



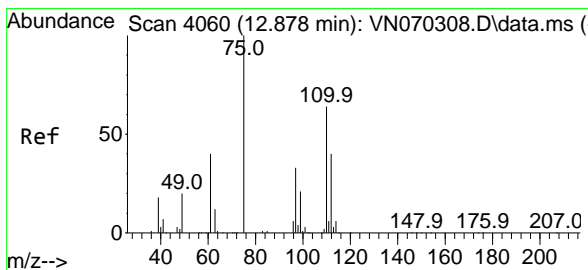
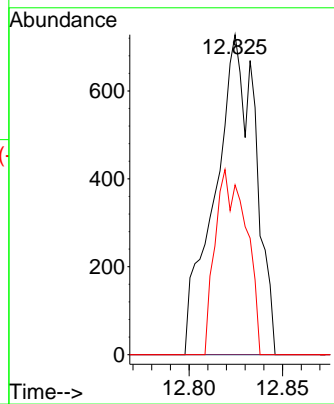
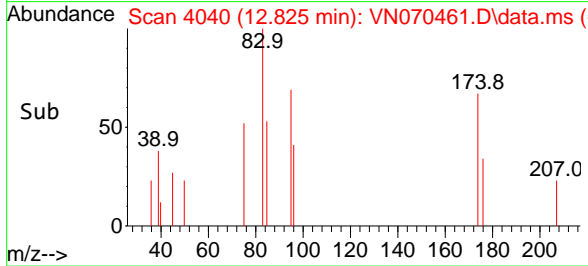


#75
 1,1,2-Tetrachloroethane
 Concen: 0.513 ug/l
 RT: 12.825 min Scan# 4005
 Delta R.T. -0.000 min
 Lab File: VN070461.D
 Acq: 4 Jan 2022 14:11

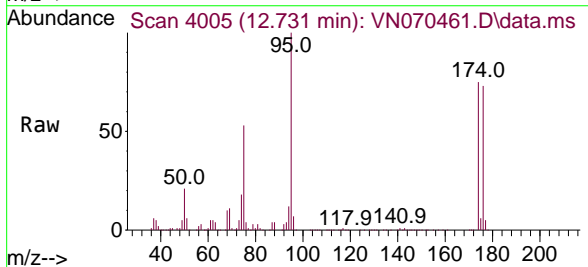
Instrument : MSVOA_N
 ClientSampleId :



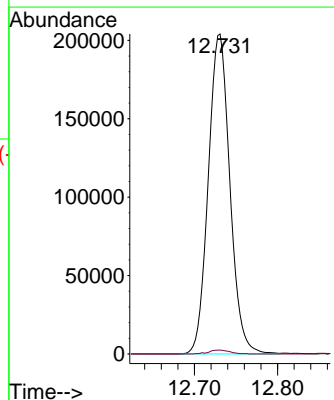
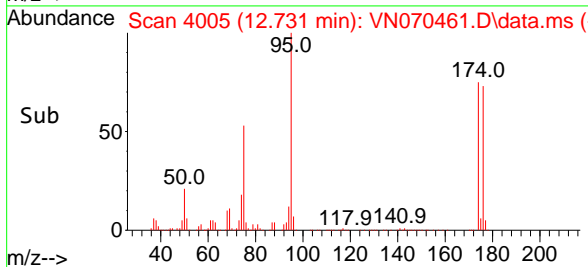
Tgt Ion: 83 Resp: 1108
 Ion Ratio Lower Upper
 83 100
 131 0.0 5.5 16.5#
 85 43.7 32.4 97.2

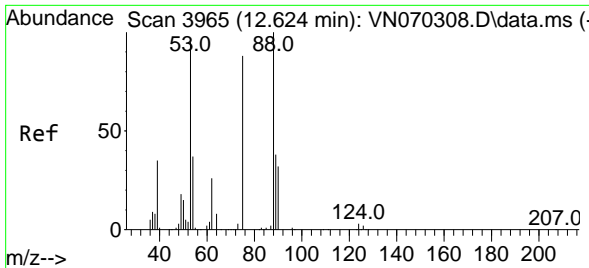


#76
 1,2,3-Trichloropropane
 Concen: 26.439 ug/l
 RT: 12.731 min Scan# 4005
 Delta R.T. -0.147 min
 Lab File: VN070461.D
 Acq: 4 Jan 2022 14:11



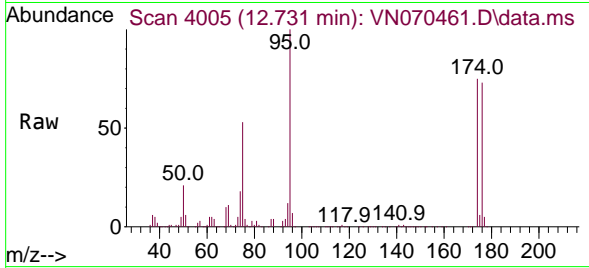
Tgt Ion: 75 Resp: 368622
 Ion Ratio Lower Upper
 75 100
 77 1.2 82.6 247.8#



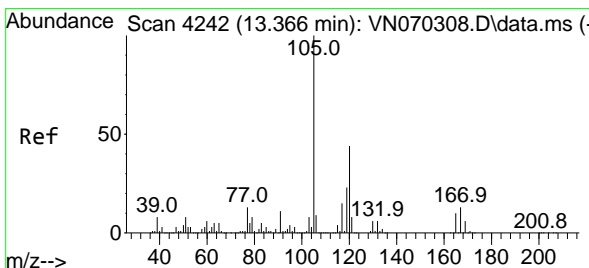
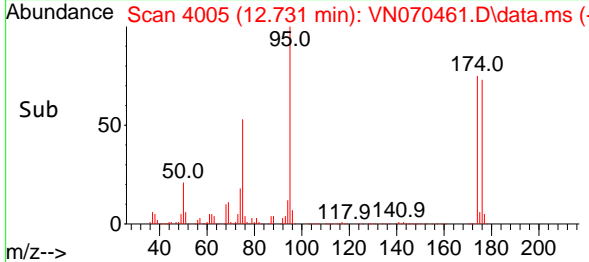
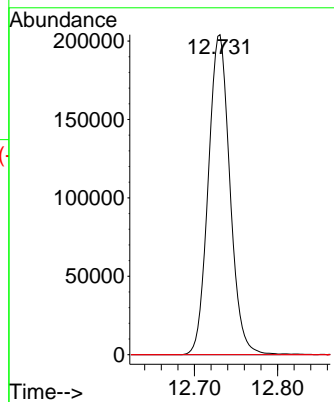


#81
 trans-1,4-Dichloro-2-butene
 Concen: 90.702 ug/l
 RT: 12.731 min Scan# 4005
 Delta R.T. 0.107 min
 Lab File: VN070461.D
 Acq: 4 Jan 2022 14:11

Instrument :
 MSVOA_N
 ClientSampleId :

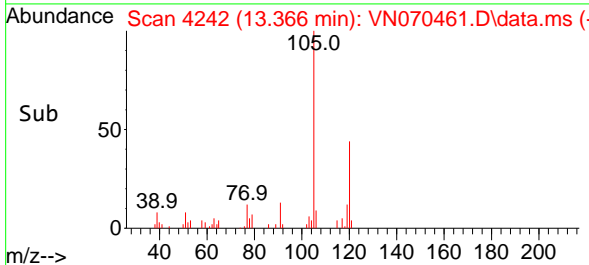
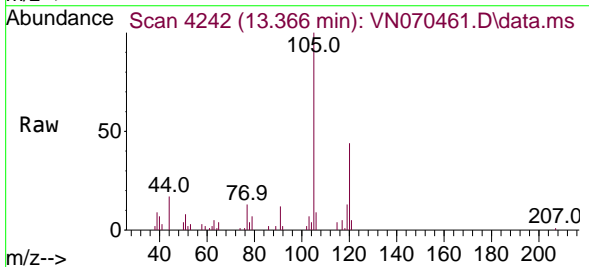
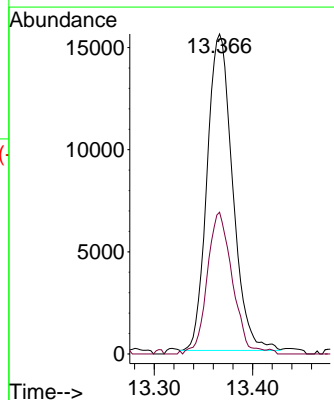


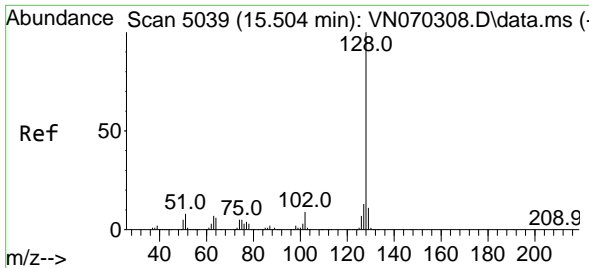
Tgt Ion: 75 Resp: 368622
 Ion Ratio Lower Upper
 75 100
 53 0.0 90.5 135.7#
 89 0.0 38.2 57.4#



#84
 1,2,4-Trimethylbenzene
 Concen: 0.785 ug/l
 RT: 13.366 min Scan# 4242
 Delta R.T. 0.000 min
 Lab File: VN070461.D
 Acq: 4 Jan 2022 14:11

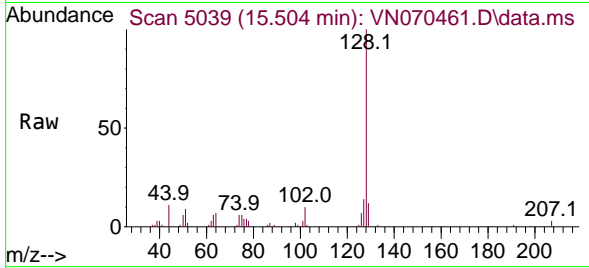
Tgt Ion: 105 Resp: 27924
 Ion Ratio Lower Upper
 105 100
 120 43.9 22.8 68.4



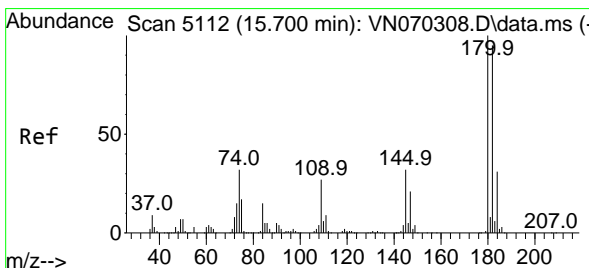
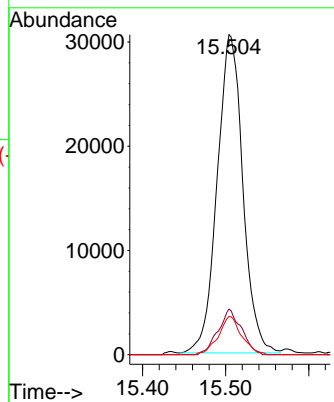
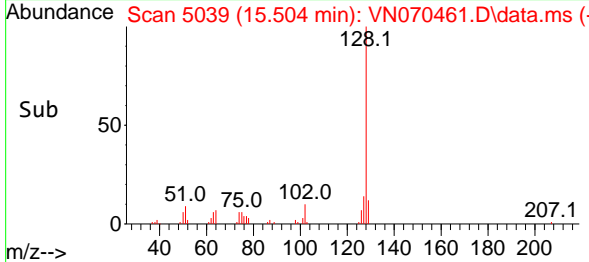


#95
 Naphthalene
 Concen: 4.590 ug/l
 RT: 15.504 min Scan# 5039
 Delta R.T. -0.000 min
 Lab File: VN070461.D
 Acq: 4 Jan 2022 14:11

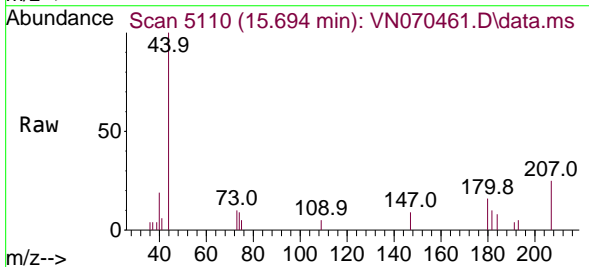
Instrument : MSVOA_N
 ClientSampleId :



Tgt Ion:128 Resp: 65555
 Ion Ratio Lower Upper
 128 100
 127 13.0 10.5 15.7
 129 10.8 8.7 13.1



#96
 1,2,3-Trichlorobenzene
 Concen: 0.921 ug/l
 RT: 15.694 min Scan# 5110
 Delta R.T. -0.006 min
 Lab File: VN070461.D
 Acq: 4 Jan 2022 14:11



Tgt Ion:180 Resp: 752
 Ion Ratio Lower Upper
 180 100
 182 107.2 47.4 142.2
 145 25.8 15.0 45.1

