

Data Path : Z:\voasrv\HPCHEM1\MSVOA_N\Data\VN010821\
 Data File : VN065447.D
 Acq On : 8 Jan 2021 16:39
 Operator : JC/MD
 Sample : M1022-15DL 10X
 Misc : 5.00mL/MSVOA_N/WATER
 ALS Vial : 12 Sample Multiplier: 1

Instrument :
 MSVOA_N
 ClientSampleID :
 41095DL

Quant Time: Jan 08 22:49:08 2021
 Quant Method : Z:\voasrv\HPCHEM1\MSVOA_N\methods\82N122220W.M
 Quant Title : SW846 8260
 QLast Update : Tue Dec 22 15:42:18 2020
 Response via : Initial Calibration

Compound	R.T.	QIon	Response	Conc	Units	Dev(Min)

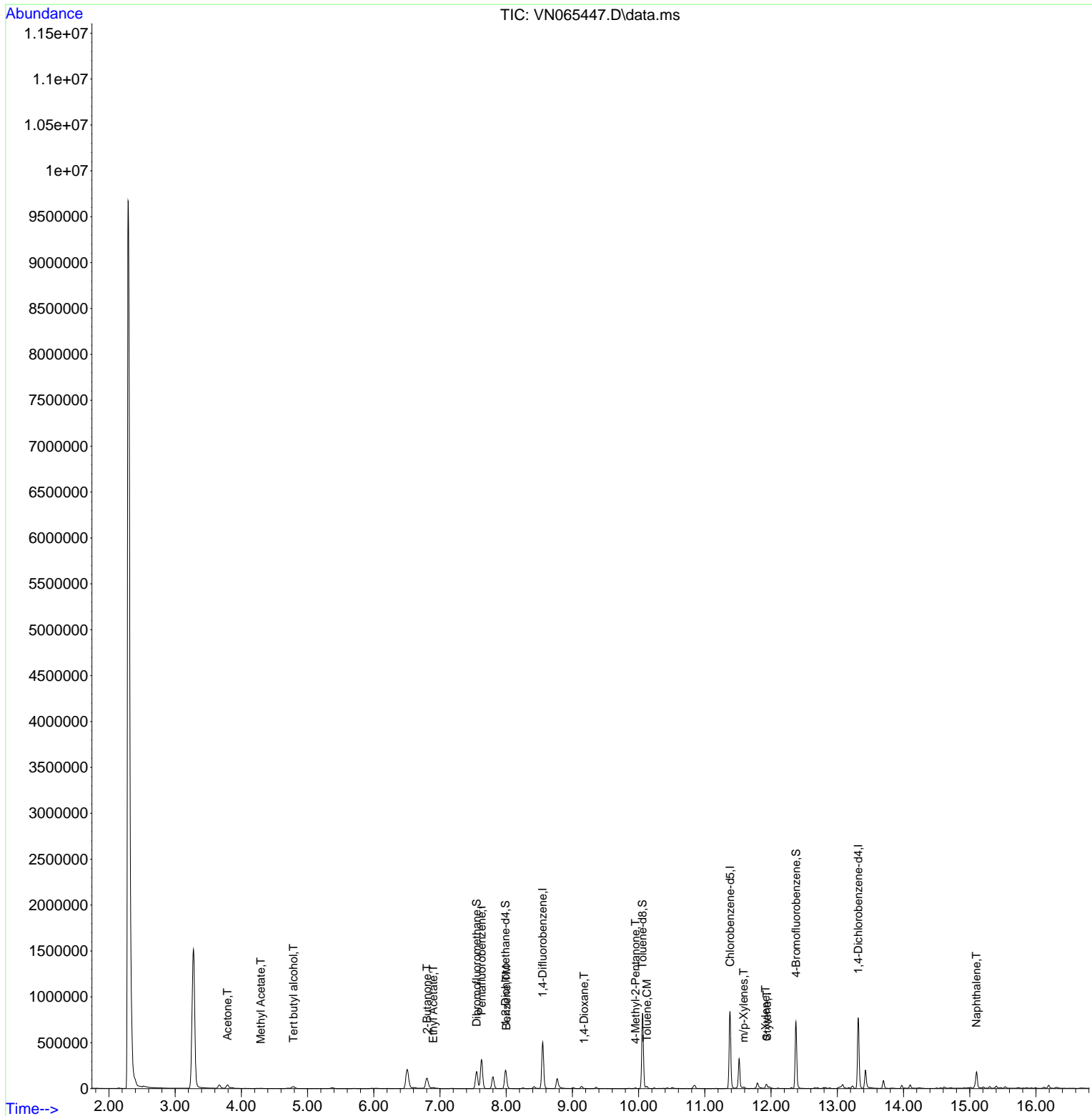
Internal Standards						
1) Pentafluorobenzene	7.627	168	289275	50.00	ug/l	0.00
34) 1,4-Difluorobenzene	8.550	114	473194	50.00	ug/l	0.00
63) Chlorobenzene-d5	11.380	117	507974	50.00	ug/l	0.00
72) 1,4-Dichlorobenzene-d4	13.318	152	234500	50.00	ug/l	0.00
System Monitoring Compounds						
33) 1,2-Dichloroethane-d4	7.991	65	162408	49.73	ug/l	0.00
Spiked Amount	50.000	Range 61 - 141	Recovery =	99.46%		
35) Dibromofluoromethane	7.553	113	143486	50.26	ug/l	0.00
Spiked Amount	50.000	Range 69 - 133	Recovery =	100.52%		
50) Toluene-d8	10.058	98	591975	55.33	ug/l	0.00
Spiked Amount	50.000	Range 65 - 126	Recovery =	110.66%		
62) 4-Bromofluorobenzene	12.376	95	246973	57.51	ug/l	0.00
Spiked Amount	50.000	Range 58 - 135	Recovery =	115.02%		
Target Compounds						
						Qvalue
11) Tert butyl alcohol	4.788	59	44736	83.72	ug/l	99
16) Acetone	3.792	43	60354	34.78	ug/l	99
18) Methyl Acetate	4.293	43	7302	2.49	ug/l #	72
25) 2-Butanone	6.804	43	192546	105.02	ug/l	99
37) Ethyl Acetate	6.897	43	23227m	5.45	ug/l	
40) Benzene	8.004	78	14201	1.11	ug/l #	84
49) 1,4-Dioxane	9.177	88	684	11.83	ug/l #	26
51) 4-Methyl-2-Pentanone	9.952	43	7290	1.76	ug/l #	75
52) Toluene	10.126	92	8865	1.10	ug/l	99
68) m/p-Xylenes	11.589	106	5282	0.75	ug/l	98
69) o-Xylene	11.920	106	3872	0.57	ug/l	100
70) Styrene	11.939	104	8743	0.77	ug/l	97
95) Naphthalene	15.103	128	160905	15.72	ug/l	100

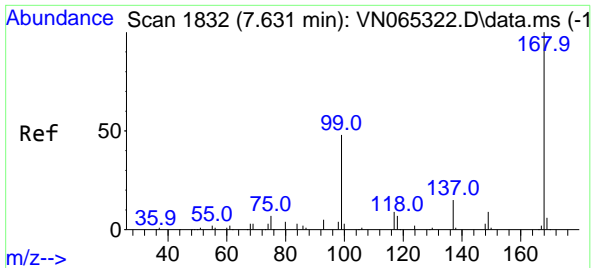
(#) = qualifier out of range (m) = manual integration (+) = signals summed

Data Path : Z:\voasrv\HPCHEM1\MSVOA_N\Data\VN010821\
 Data File : VN065447.D
 Acq On : 8 Jan 2021 16:39
 Operator : JC/MD
 Sample : M1022-15DL 10X
 Misc : 5.00mL/MSVOA_N/WATER
 ALS Vial : 12 Sample Multiplier: 1

Instrument :
 MSVOA_N
 ClientSampled :
 41095DL

Quant Time: Jan 08 22:49:08 2021
 Quant Method : Z:\voasrv\HPCHEM1\MSVOA_N\methods\82N122220W.M
 Quant Title : SW846 8260
 QLast Update : Tue Dec 22 15:42:18 2020
 Response via : Initial Calibration

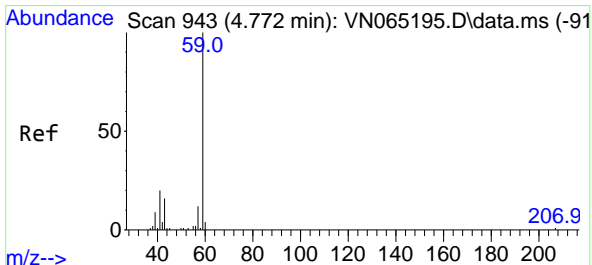
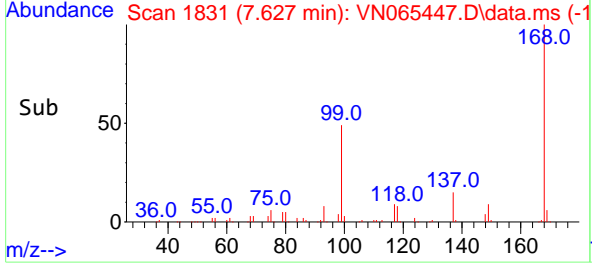
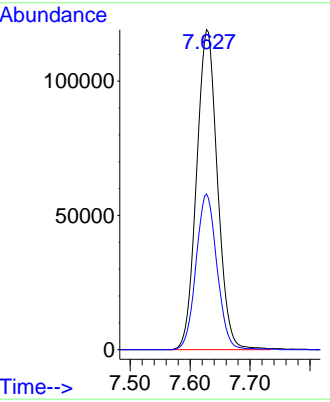
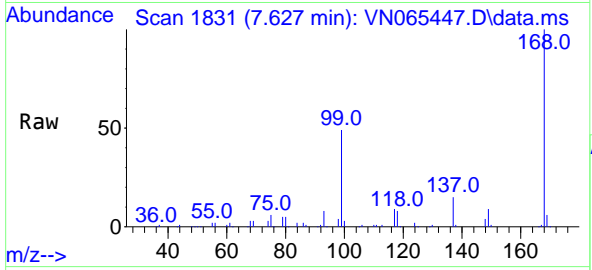




#1
 Pentafluorobenzene
 Concen: 50.00 ug/l
 RT: 7.627 min Scan# 1831
 Delta R.T. 0.000 min
 Lab File: VN065447.D
 Acq: 8 Jan 2021 16:39

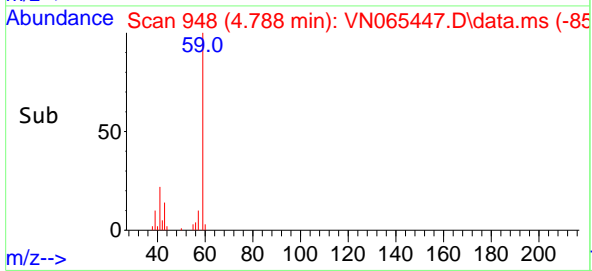
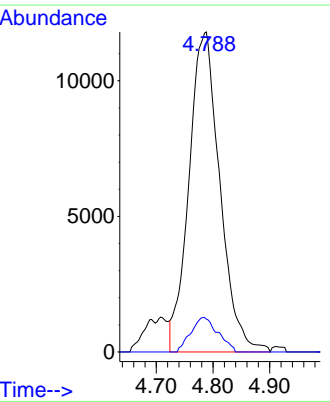
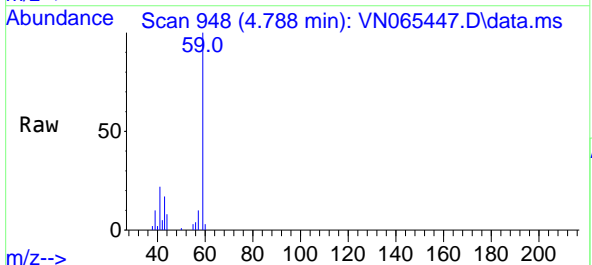
Instrument :
 MSVOA_N
 ClientSampled :
 41095DL

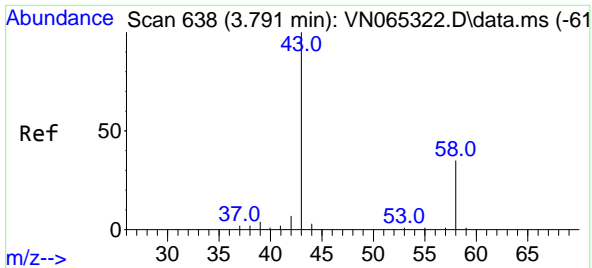
Tgt Ion:168 Resp: 289275
 Ion Ratio Lower Upper
 168 100
 99 48.6 43.0 64.4



#11
 Tert butyl alcohol
 Concen: 83.72 ug/l
 RT: 4.788 min Scan# 948
 Delta R.T. 0.016 min
 Lab File: VN065447.D
 Acq: 8 Jan 2021 16:39

Tgt Ion: 59 Resp: 44736
 Ion Ratio Lower Upper
 59 100
 57 9.4 7.9 11.9

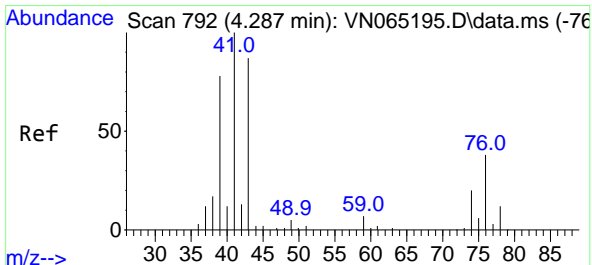
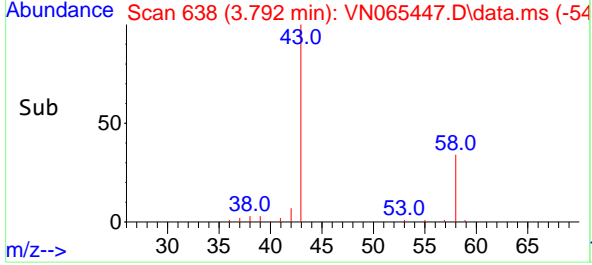
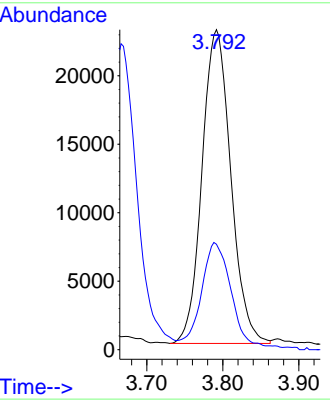
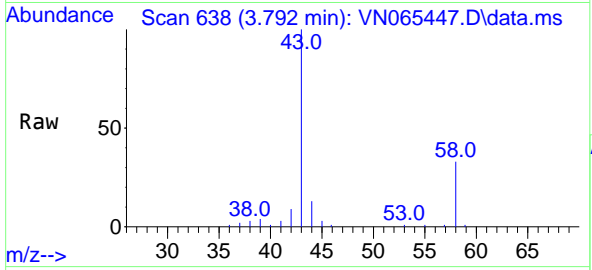




#16
 Acetone
 Concen: 34.78 ug/l
 RT: 3.792 min Scan# 638
 Delta R.T. 0.006 min
 Lab File: VN065447.D
 Acq: 8 Jan 2021 16:39

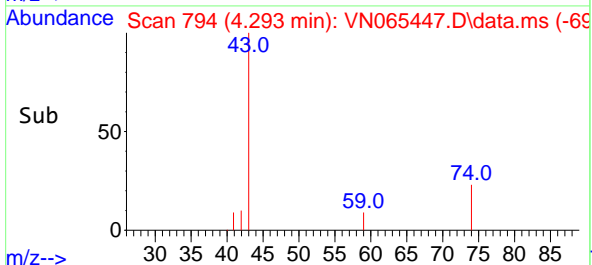
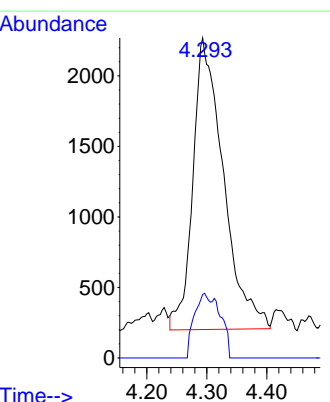
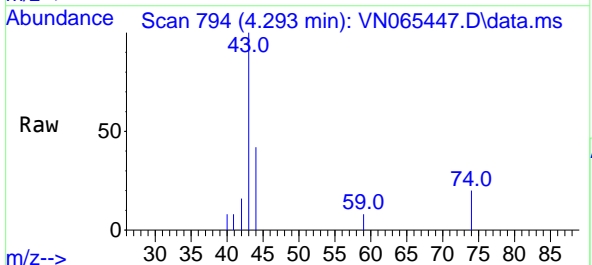
Instrument :
 MSVOA_N
ClientSampled :
 41095DL

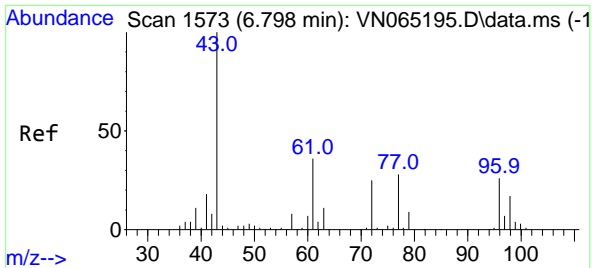
Tgt Ion: 43 Resp: 60354
 Ion Ratio Lower Upper
 43 100
 58 32.4 25.7 38.5



#18
 Methyl Acetate
 Concen: 2.49 ug/l
 RT: 4.293 min Scan# 794
 Delta R.T. 0.006 min
 Lab File: VN065447.D
 Acq: 8 Jan 2021 16:39

Tgt Ion: 43 Resp: 7302
 Ion Ratio Lower Upper
 43 100
 74 11.3 20.2 30.2#

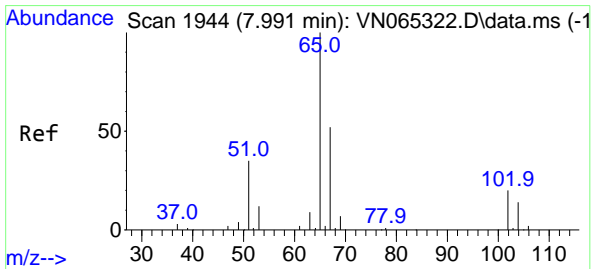
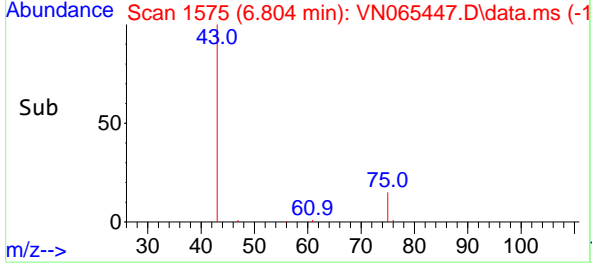
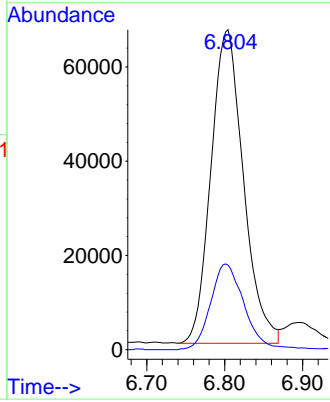
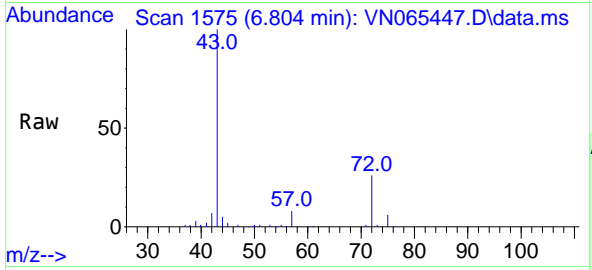




#25
 2-Butanone
 Concen: 105.02 ug/l
 RT: 6.804 min Scan# 1575
 Delta R.T. 0.006 min
 Lab File: VN065447.D
 Acq: 8 Jan 2021 16:39

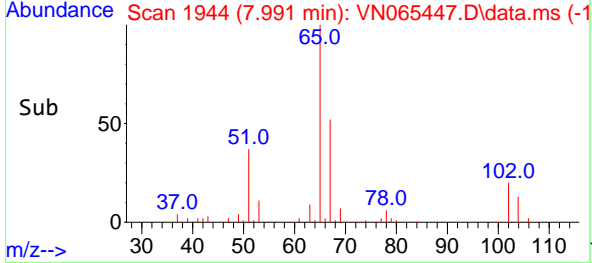
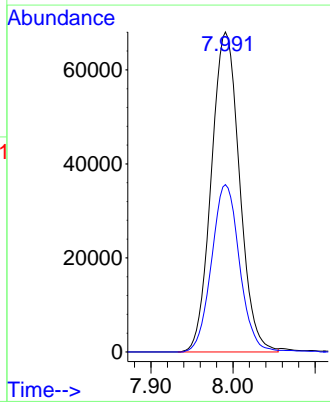
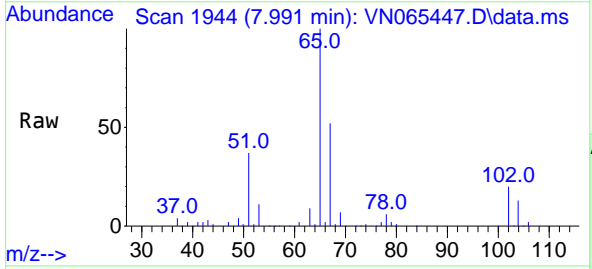
Instrument :
 MSVOA_N
ClientSampled :
 41095DL

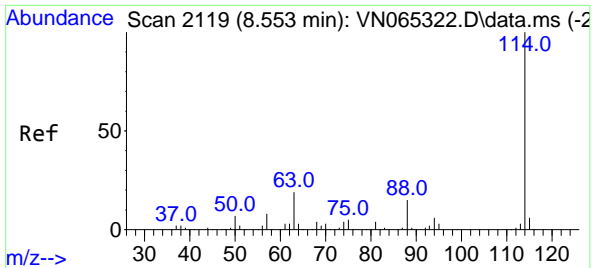
Tgt Ion: 43 Resp: 192546
 Ion Ratio Lower Upper
 43 100
 72 27.0 21.0 31.6



#33
 1,2-Dichloroethane-d4
 Concen: 49.73 ug/l
 RT: 7.991 min Scan# 1944
 Delta R.T. -0.000 min
 Lab File: VN065447.D
 Acq: 8 Jan 2021 16:39

Tgt Ion: 65 Resp: 162408
 Ion Ratio Lower Upper
 65 100
 67 52.2 0.0 108.2



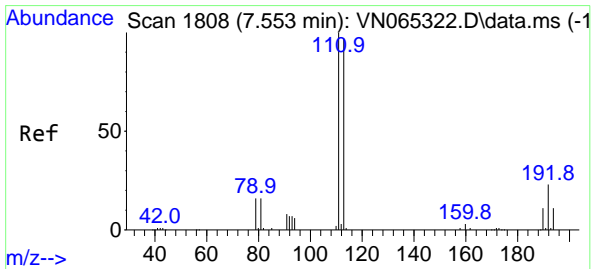
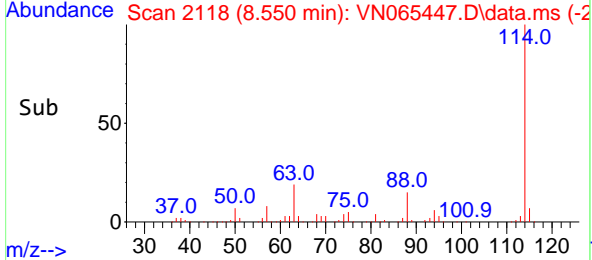
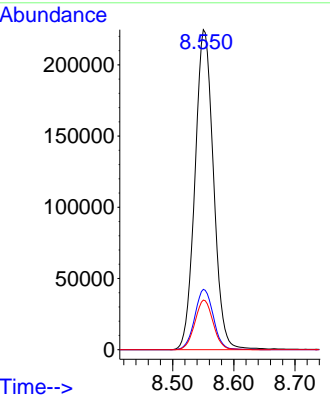
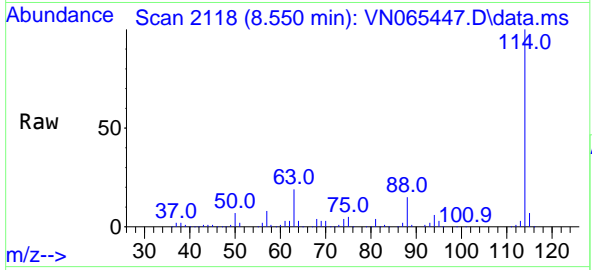


#34
 1,4-Difluorobenzene
 Concen: 50.00 ug/l
 RT: 8.550 min Scan# 2118
 Delta R.T. 0.000 min
 Lab File: VN065447.D
 Acq: 8 Jan 2021 16:39

Instrument :
 MSVOA_N
ClientSampled :
 41095DL

Tgt Ion:114 Resp: 473194

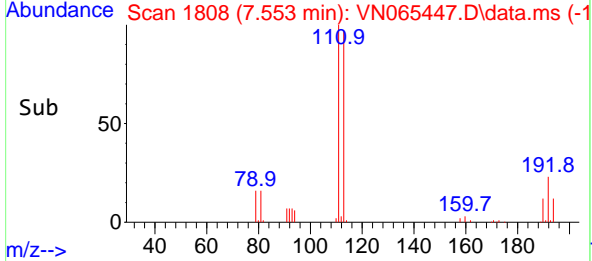
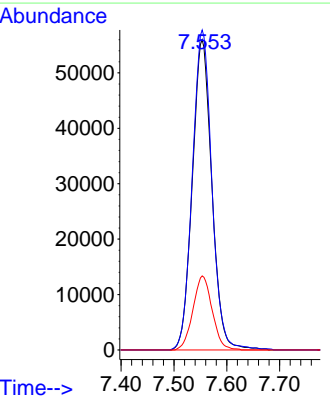
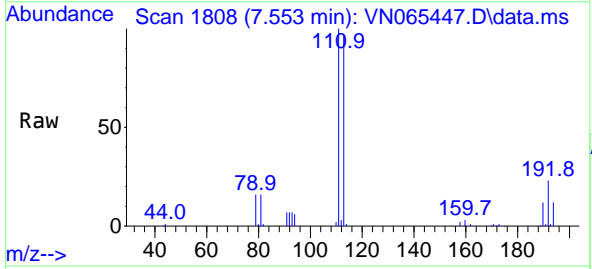
Ion	Ratio	Lower	Upper
114	100		
63	18.9	0.0	38.6
88	15.5	0.0	32.6

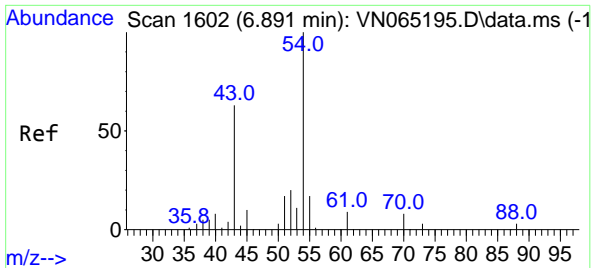


#35
 Dibromofluoromethane
 Concen: 50.26 ug/l
 RT: 7.553 min Scan# 1808
 Delta R.T. 0.003 min
 Lab File: VN065447.D
 Acq: 8 Jan 2021 16:39

Tgt Ion:113 Resp: 143486

Ion	Ratio	Lower	Upper
113	100		
111	103.0	81.6	122.4
192	23.5	16.2	24.2



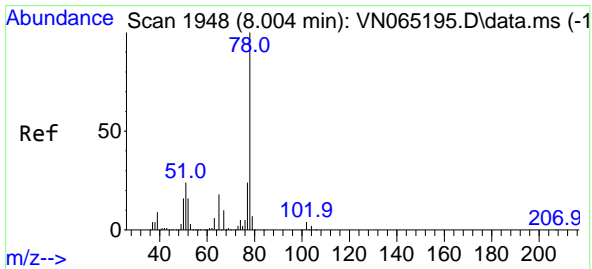
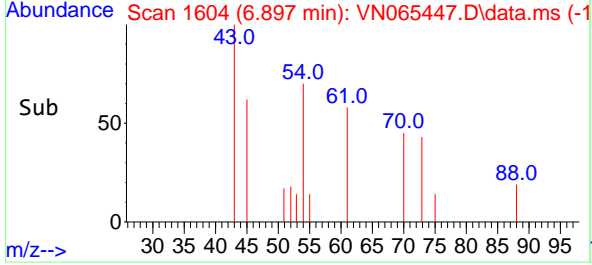
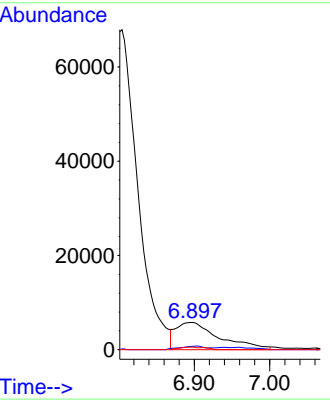
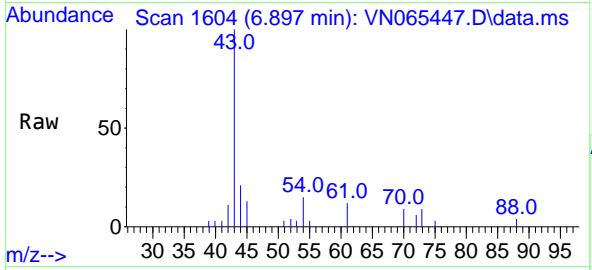


#37
 Ethyl Acetate
 Concen: 5.45 ug/l m
 RT: 6.897 min Scan# 1604
 Delta R.T. 0.006 min
 Lab File: VN065447.D
 Acq: 8 Jan 2021 16:39

Instrument :
 MSVOA_N
 ClientSampled :
 41095DL

Tgt Ion: 43 Resp: 23227

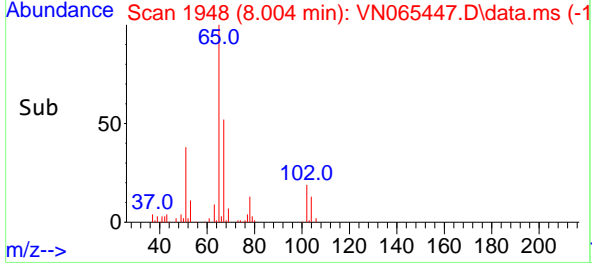
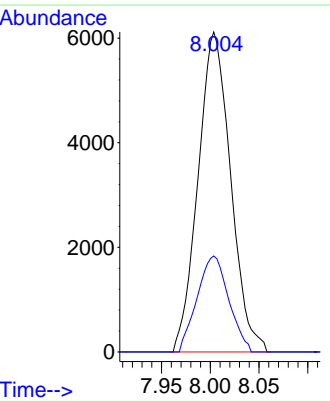
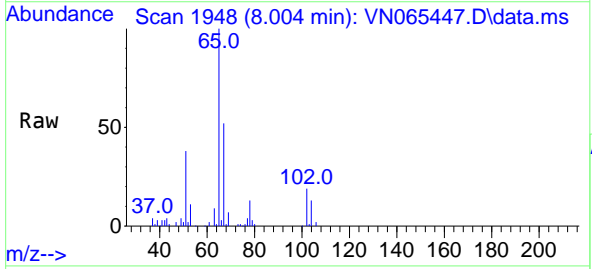
Ion	Ratio	Lower	Upper
43	100		
61	0.0	12.8	19.2#
70	0.0	8.8	13.2#

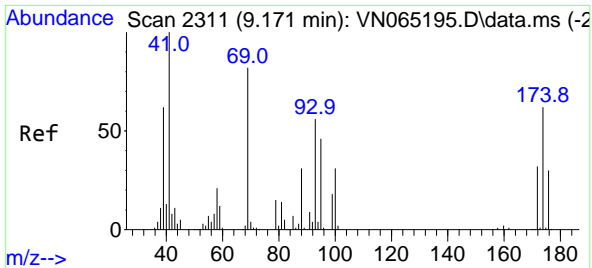


#40
 Benzene
 Concen: 1.11 ug/l
 RT: 8.004 min Scan# 1948
 Delta R.T. -0.000 min
 Lab File: VN065447.D
 Acq: 8 Jan 2021 16:39

Tgt Ion: 78 Resp: 14201

Ion	Ratio	Lower	Upper
78	100		
77	30.0	17.9	26.9#



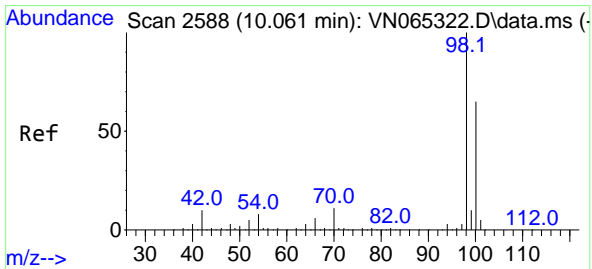
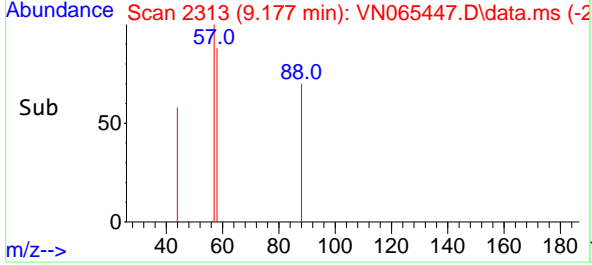
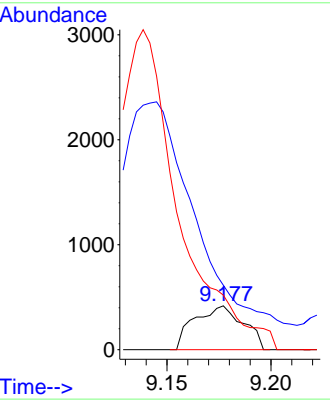
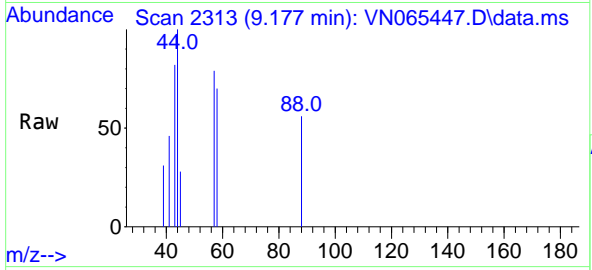


#49
 1,4-Dioxane
 Concen: 11.83 ug/l
 RT: 9.177 min Scan# 2313
 Delta R.T. 0.006 min
 Lab File: VN065447.D
 Acq: 8 Jan 2021 16:39

Instrument :
 MSVOA_N
 ClientSampled :
 41095DL

Tgt Ion: 88 Resp: 684

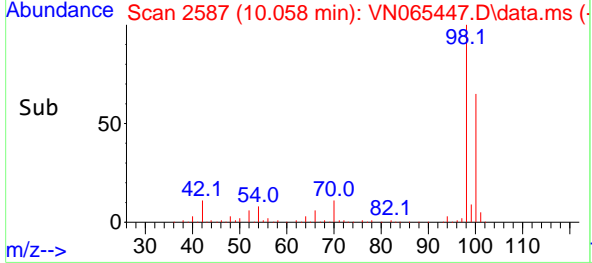
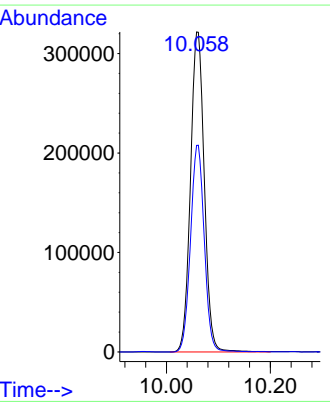
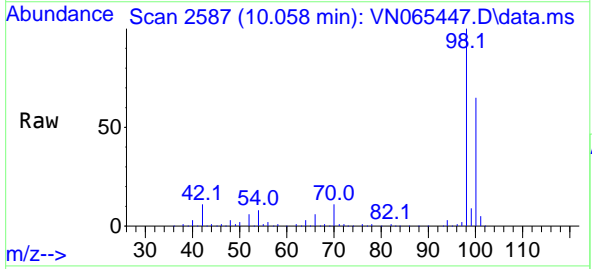
Ion	Ratio	Lower	Upper
88	100		
43	0.0	24.2	36.4#
58	0.0	52.5	78.7#

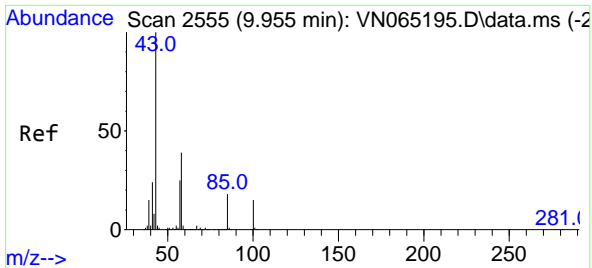


#50
 Toluene-d8
 Concen: 55.33 ug/l
 RT: 10.058 min Scan# 2587
 Delta R.T. 0.000 min
 Lab File: VN065447.D
 Acq: 8 Jan 2021 16:39

Tgt Ion: 98 Resp: 591975

Ion	Ratio	Lower	Upper
98	100		
100	64.5	51.7	77.5

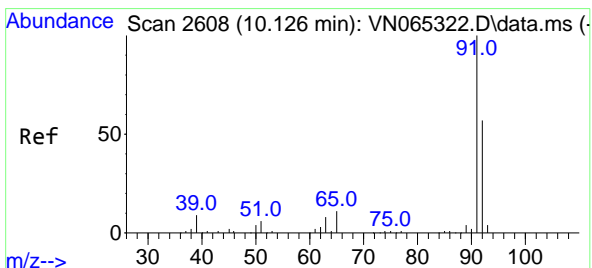
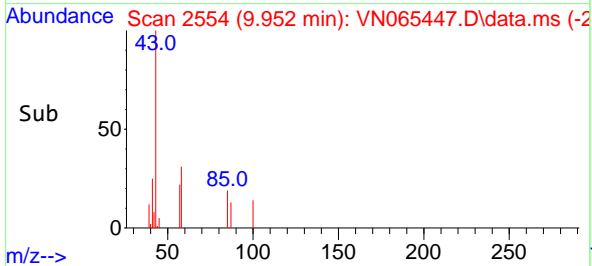
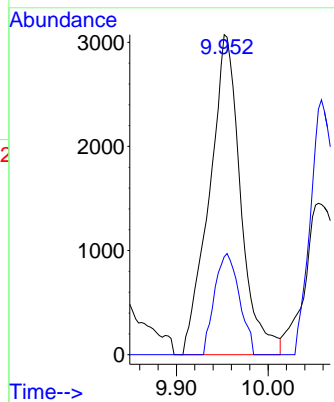
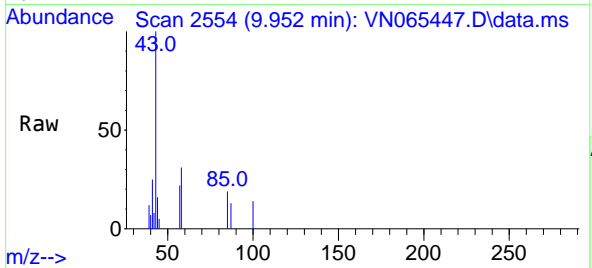




#51
 4-Methyl-2-Pentanone
 Concen: 1.76 ug/l
 RT: 9.952 min Scan# 2554
 Delta R.T. -0.003 min
 Lab File: VN065447.D
 Acq: 8 Jan 2021 16:39

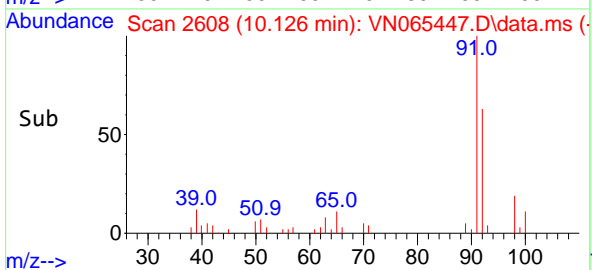
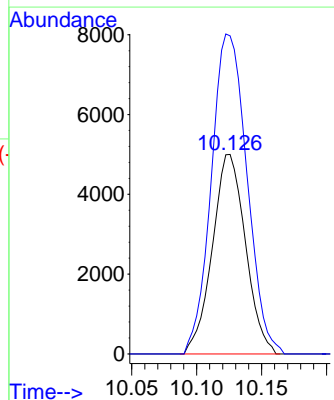
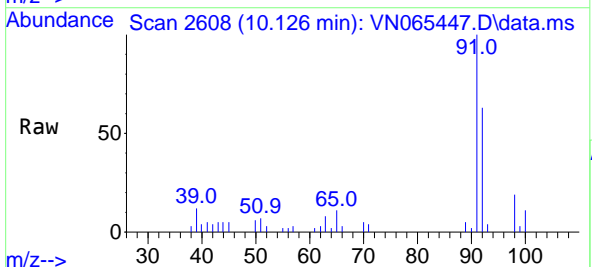
Instrument :
 MSVOA_N
 ClientSampled :
 41095DL

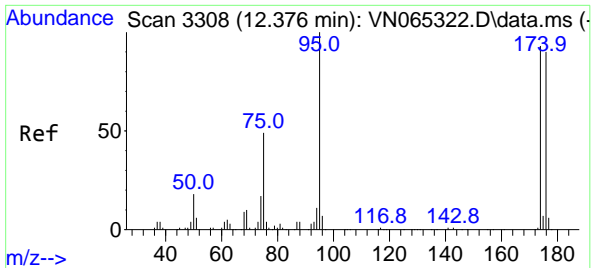
Tgt Ion: 43 Resp: 7290
 Ion Ratio Lower Upper
 43 100
 58 25.0 32.4 48.6#



#52
 Toluene
 Concen: 1.10 ug/l
 RT: 10.126 min Scan# 2608
 Delta R.T. -0.000 min
 Lab File: VN065447.D
 Acq: 8 Jan 2021 16:39

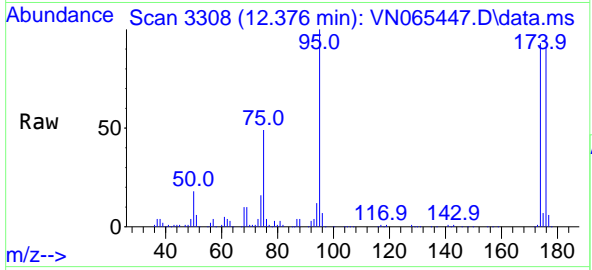
Tgt Ion: 92 Resp: 8865
 Ion Ratio Lower Upper
 92 100
 91 172.4 139.1 208.7



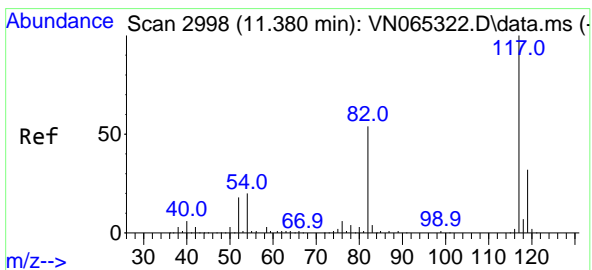
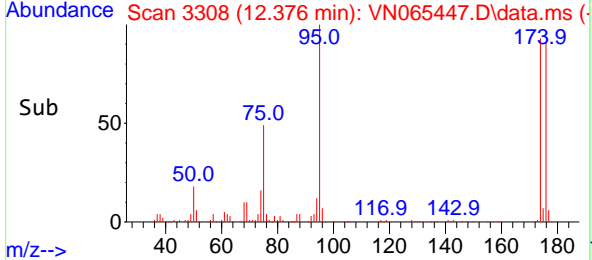
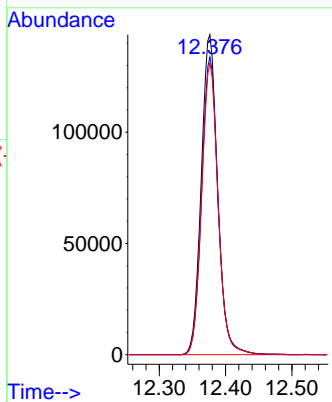


#62
 4-Bromofluorobenzene
 Concen: 57.51 ug/l
 RT: 12.376 min Scan# 3308
 Delta R.T. 0.000 min
 Lab File: VN065447.D
 Acq: 8 Jan 2021 16:39

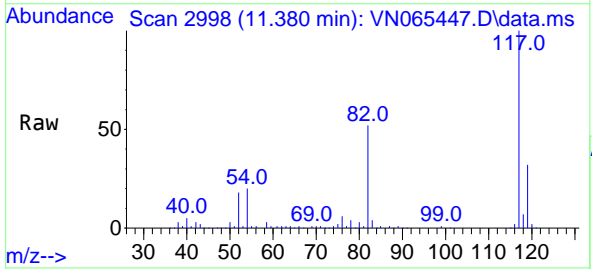
Instrument :
 MSVOA_N
ClientSampled :
 41095DL



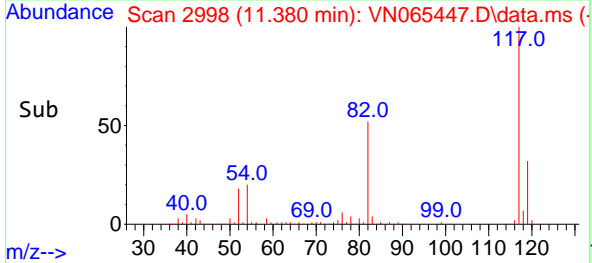
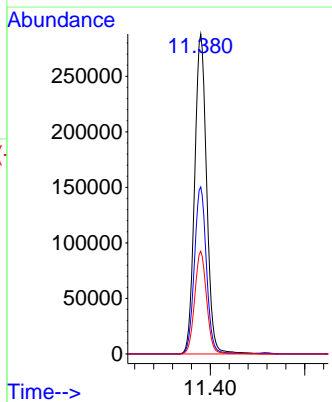
Tgt Ion: 95 Resp: 246973
 Ion Ratio Lower Upper
 95 100
 174 93.7 0.0 160.4
 176 91.0 0.0 158.4

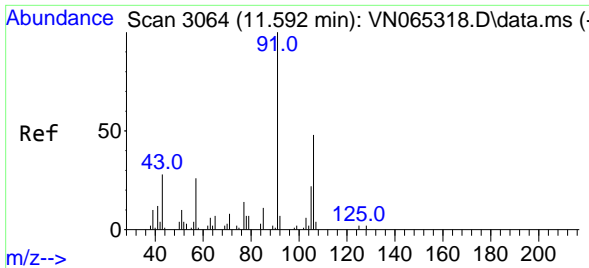


#63
 Chlorobenzene-d5
 Concen: 50.00 ug/l
 RT: 11.380 min Scan# 2998
 Delta R.T. -0.000 min
 Lab File: VN065447.D
 Acq: 8 Jan 2021 16:39



Tgt Ion: 117 Resp: 507974
 Ion Ratio Lower Upper
 117 100
 82 52.2 44.2 66.2
 119 32.1 25.8 38.6

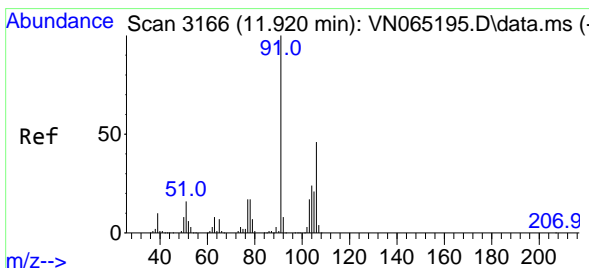
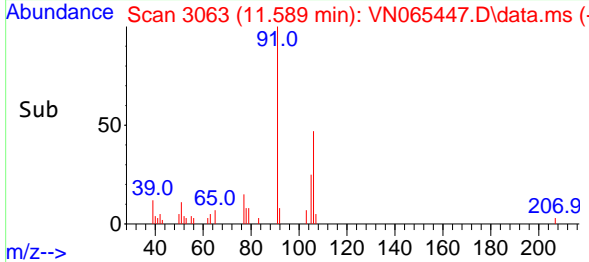
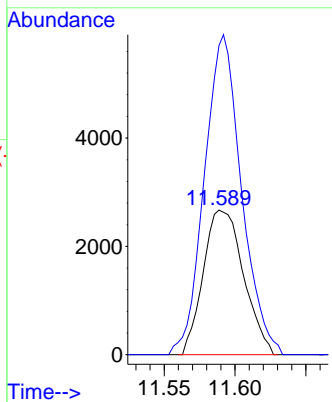
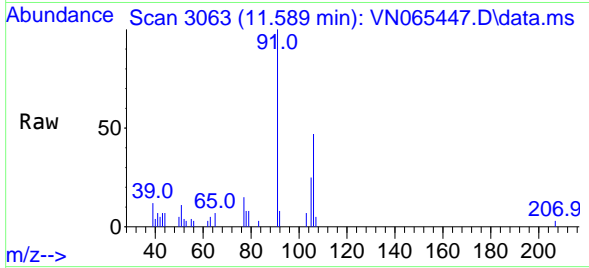




#68
 m/p-Xylenes
 Concen: 0.75 ug/l
 RT: 11.589 min Scan# 3063
 Delta R.T. -0.003 min
 Lab File: VN065447.D
 Acq: 8 Jan 2021 16:39

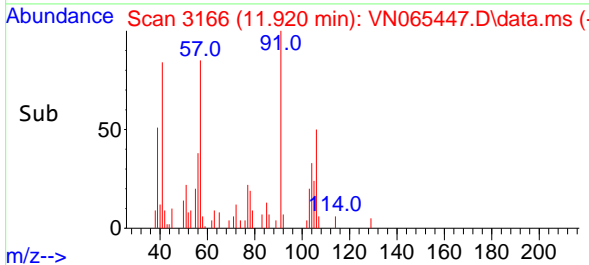
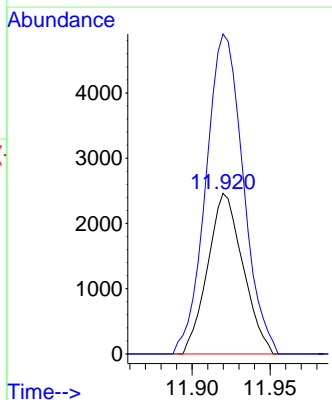
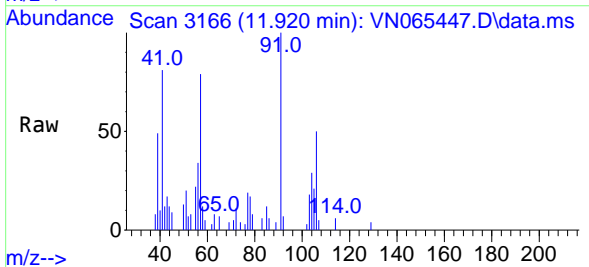
Instrument :
 MSVOA_N
 ClientSampled :
 41095DL

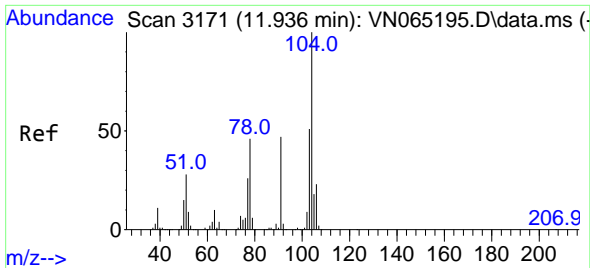
Tgt Ion:106 Resp: 5282
 Ion Ratio Lower Upper
 106 100
 91 203.9 161.0 241.4



#69
 o-Xylene
 Concen: 0.57 ug/l
 RT: 11.920 min Scan# 3166
 Delta R.T. -0.000 min
 Lab File: VN065447.D
 Acq: 8 Jan 2021 16:39

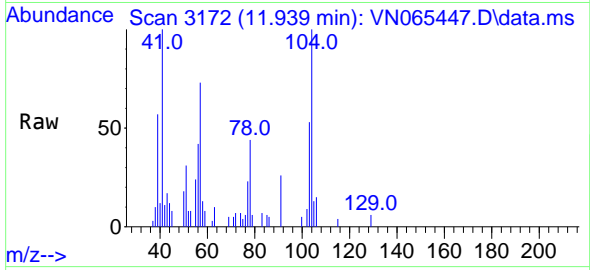
Tgt Ion:106 Resp: 3872
 Ion Ratio Lower Upper
 106 100
 91 210.7 105.5 316.5



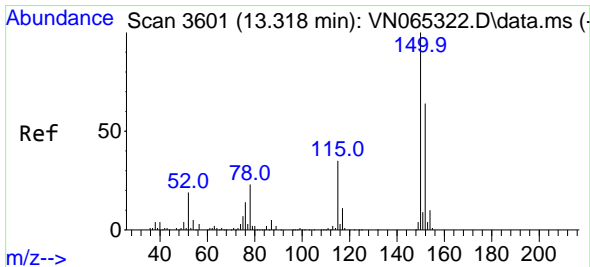
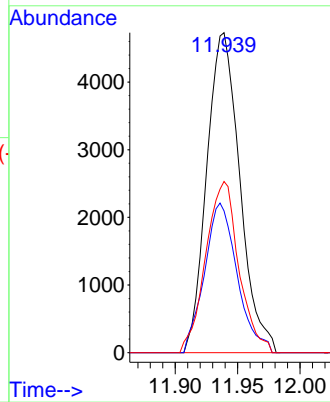
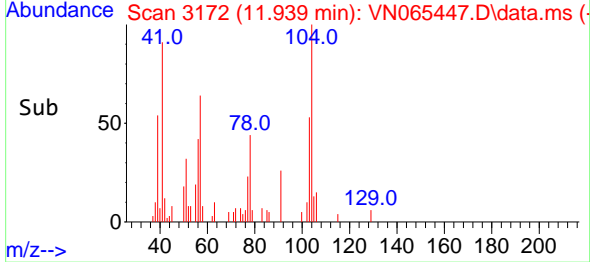


#70
 Styrene
 Concen: 0.77 ug/l
 RT: 11.939 min Scan# 3172
 Delta R.T. 0.003 min
 Lab File: VN065447.D
 Acq: 8 Jan 2021 16:39

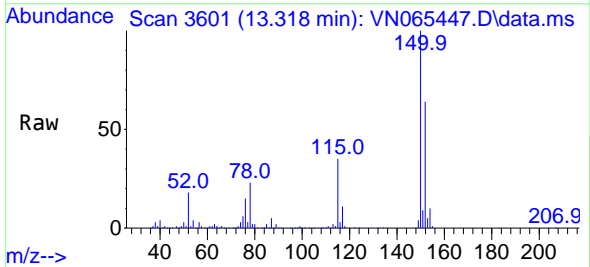
Instrument :
 MSVOA_N
 ClientSampled :
 41095DL



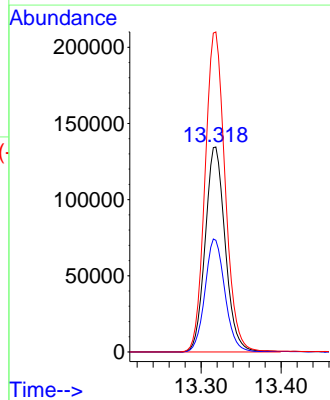
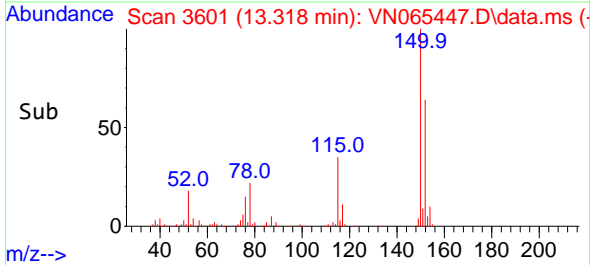
Tgt Ion:104 Resp: 8743
 Ion Ratio Lower Upper
 104 100
 78 46.3 39.0 58.6
 103 53.6 44.3 66.5

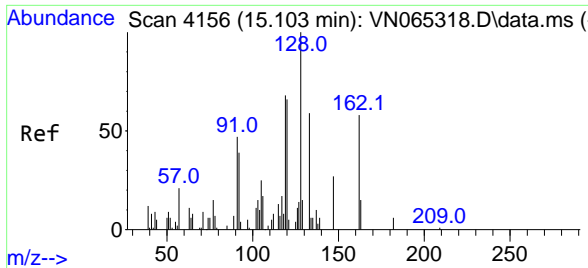


#72
 1,4-Dichlorobenzene-d4
 Concen: 50.00 ug/l
 RT: 13.318 min Scan# 3601
 Delta R.T. 0.000 min
 Lab File: VN065447.D
 Acq: 8 Jan 2021 16:39



Tgt Ion:152 Resp: 234500
 Ion Ratio Lower Upper
 152 100
 115 54.9 29.7 89.1
 150 157.4 0.0 350.6





#95
 Naphthalene
 Concen: 15.72 ug/l
 RT: 15.103 min Scan# 4156
 Delta R.T. 0.007 min
 Lab File: VN065447.D
 Acq: 8 Jan 2021 16:39

Instrument :
 MSVOA_N
 ClientSampleId :
 41095DL

Tgt Ion:128 Resp: 160905

Ion	Ratio	Lower	Upper
128	100		
127	12.7	10.3	15.5
129	10.9	8.7	13.1

