

Data Path : Z:\voasrv\HPCHEM1\MSVOA_N\Data\VN010821\
 Data File : VN065457.D
 Acq On : 8 Jan 2021 20:46
 Operator : JC/MD
 Sample : PB133969ZHE#09
 Misc : 5.00mL/MSVOA_N/WATER
 ALS Vial : 22 Sample Multiplier: 1

Instrument :
 MSVOA_N
 ClientSampleId :
 PB133969ZHE#09

Quant Time: Jan 08 22:52:07 2021
 Quant Method : Z:\voasrv\HPCHEM1\MSVOA_N\methods\82N122220W.M
 Quant Title : SW846 8260
 QLast Update : Tue Dec 22 15:42:18 2020
 Response via : Initial Calibration

Compound	R.T.	QIon	Response	Conc	Units	Dev(Min)

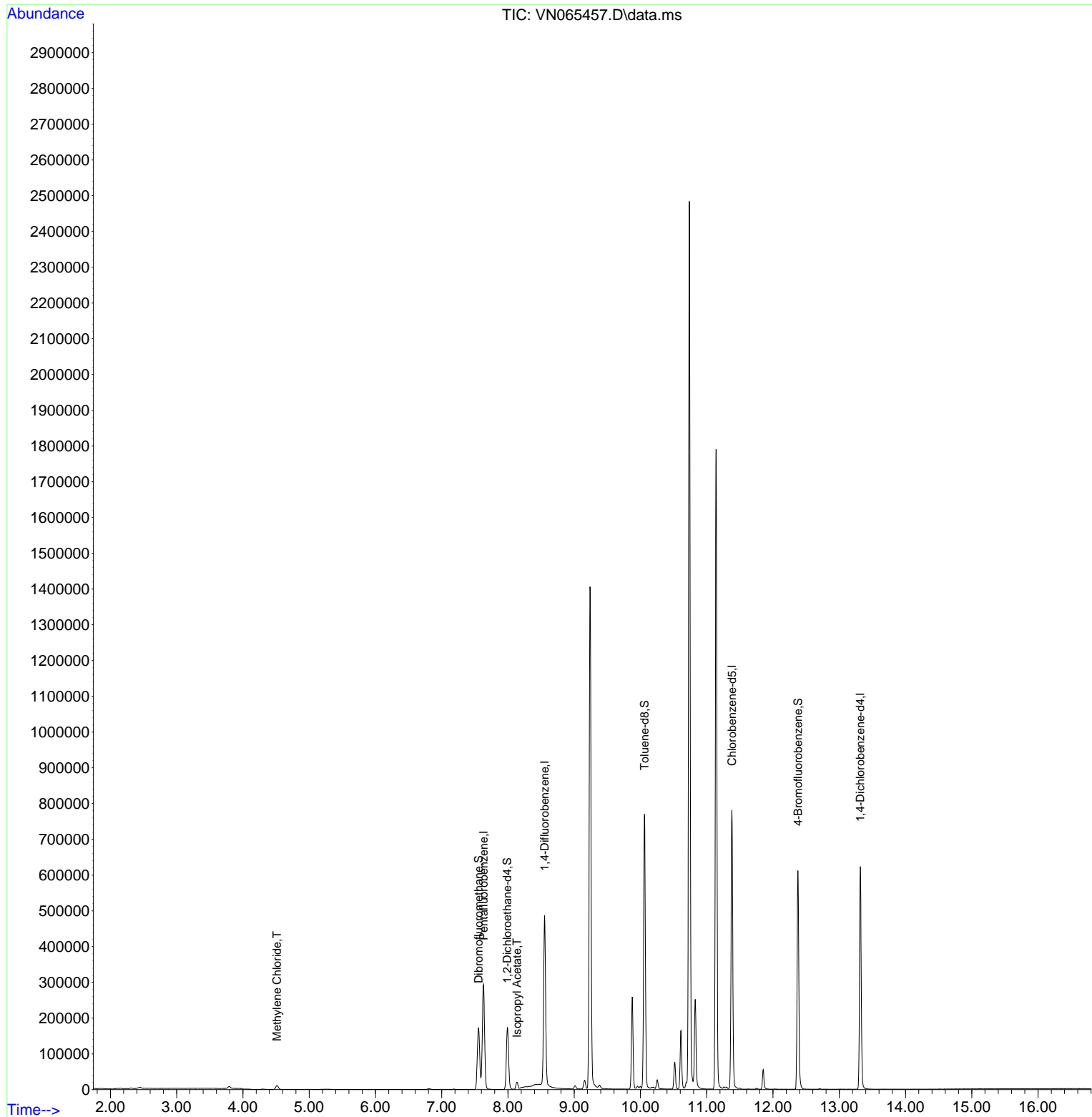
Internal Standards						
1) Pentafluorobenzene	7.630	168	267861	50.00	ug/l	0.00
34) 1,4-Difluorobenzene	8.553	114	451008	50.00	ug/l	0.00
63) Chlorobenzene-d5	11.379	117	485201	50.00	ug/l	0.00
72) 1,4-Dichlorobenzene-d4	13.318	152	192588	50.00	ug/l	0.00
System Monitoring Compounds						
33) 1,2-Dichloroethane-d4	7.991	65	153281	50.69	ug/l	0.00
Spiked Amount	50.000	Range 61 - 141	Recovery	=	101.38%	
35) Dibromofluoromethane	7.556	113	135811	49.91	ug/l	0.00
Spiked Amount	50.000	Range 69 - 133	Recovery	=	99.82%	
50) Toluene-d8	10.061	98	559887	54.90	ug/l	0.00
Spiked Amount	50.000	Range 65 - 126	Recovery	=	109.80%	
62) 4-Bromofluorobenzene	12.376	95	216914	53.40	ug/l	0.00
Spiked Amount	50.000	Range 58 - 135	Recovery	=	106.80%	
Target Compounds						
						Qvalue
20) Methylene Chloride	4.515	84	8855	3.00	ug/l	93
43) Isopropyl Acetate	8.135	43	25497	3.64	ug/l	97

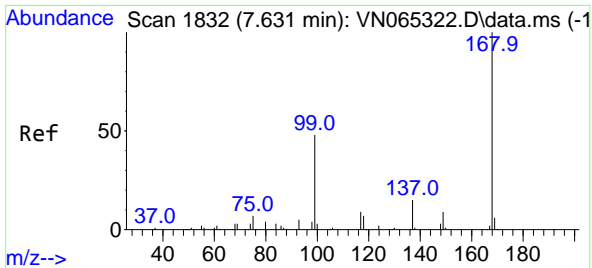
(#) = qualifier out of range (m) = manual integration (+) = signals summed

Data Path : Z:\voasrv\HPCHEM1\MSVOA_N\Data\VN010821\
 Data File : VN065457.D
 Acq On : 8 Jan 2021 20:46
 Operator : JC/MD
 Sample : PB133969ZHE#09
 Misc : 5.00mL/MSVOA_N/WATER
 ALS Vial : 22 Sample Multiplier: 1

Instrument :
 MSVOA_N
 ClientSampleId :
 PB133969ZHE#09

Quant Time: Jan 08 22:52:07 2021
 Quant Method : Z:\voasrv\HPCHEM1\MSVOA_N\methods\82N122220W.M
 Quant Title : SW846 8260
 QLast Update : Tue Dec 22 15:42:18 2020
 Response via : Initial Calibration

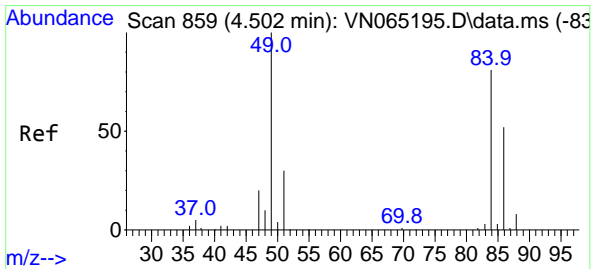
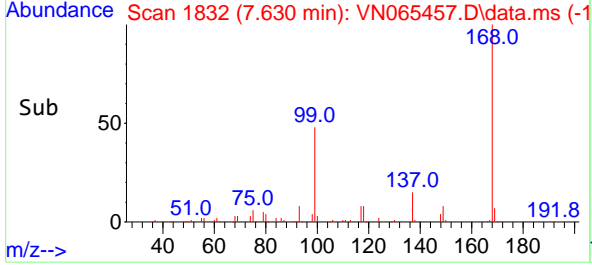
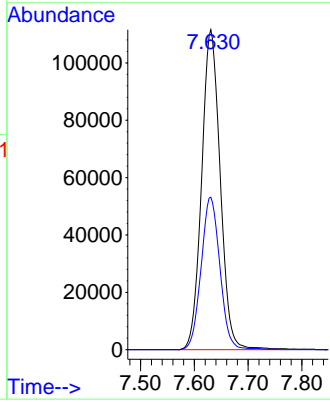
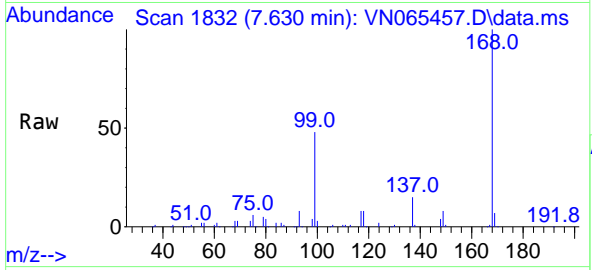




#1
 Pentafluorobenzene
 Concen: 50.00 ug/l
 RT: 7.630 min Scan# 1832
 Delta R.T. 0.003 min
 Lab File: VN065457.D
 Acq: 8 Jan 2021 20:46

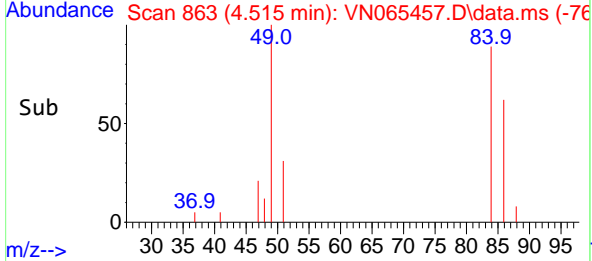
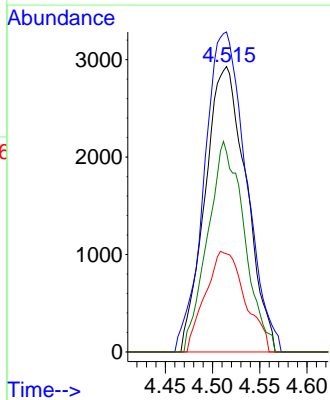
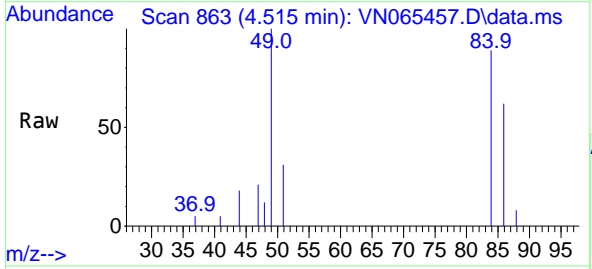
Instrument :
 MSVOA_N
 ClientSampled :
 PB133969ZHE#09

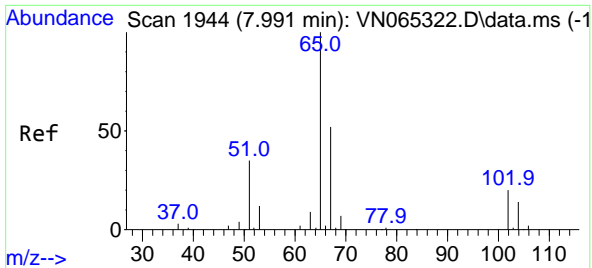
Tgt Ion:168 Resp: 267861
 Ion Ratio Lower Upper
 168 100
 99 47.7 43.0 64.4



#20
 Methylene Chloride
 Concen: 3.00 ug/l
 RT: 4.515 min Scan# 863
 Delta R.T. 0.013 min
 Lab File: VN065457.D
 Acq: 8 Jan 2021 20:46

Tgt Ion: 84 Resp: 8855
 Ion Ratio Lower Upper
 84 100
 49 106.8 93.4 140.0
 51 34.3 28.2 42.4
 86 70.0 51.7 77.5

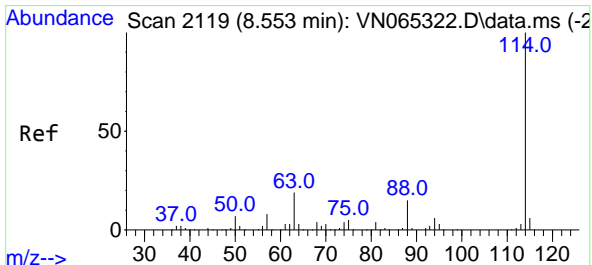
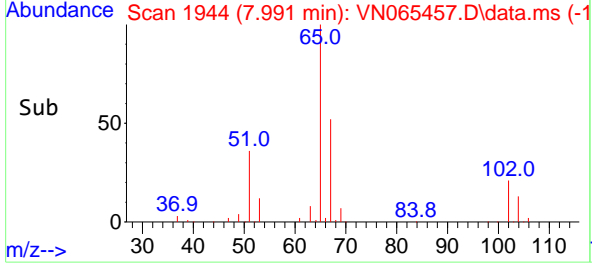
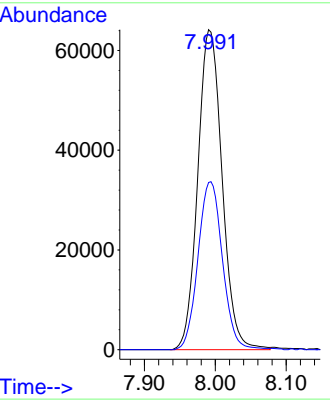
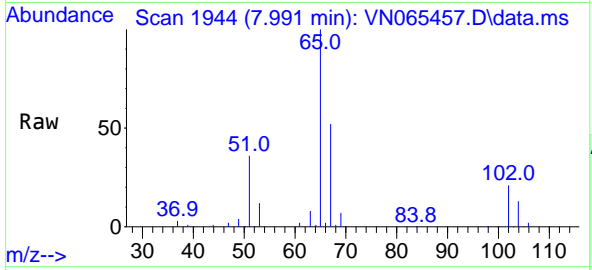




#33
 1,2-Dichloroethane-d4
 Concen: 50.69 ug/l
 RT: 7.991 min Scan# 1944
 Delta R.T. -0.000 min
 Lab File: VN065457.D
 Acq: 8 Jan 2021 20:46

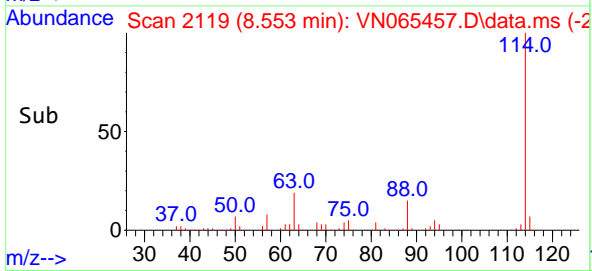
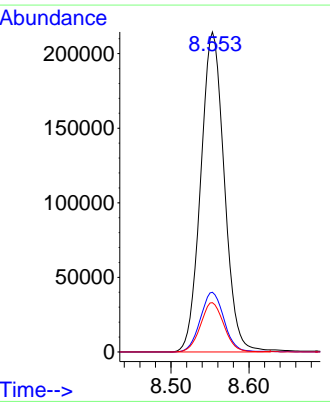
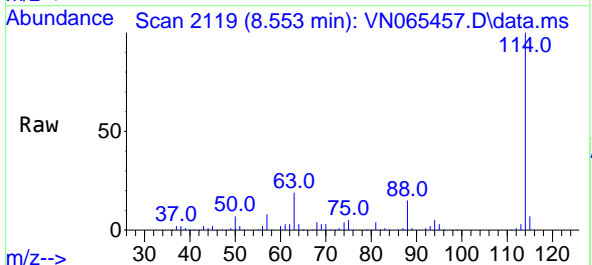
Instrument :
 MSVOA_N
ClientSampled :
 PB133969ZHE#09

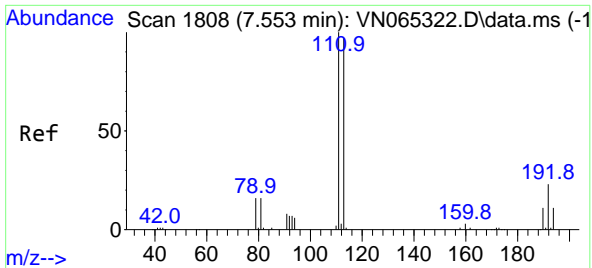
Tgt Ion: 65 Resp: 153281
 Ion Ratio Lower Upper
 65 100
 67 52.7 0.0 108.2



#34
 1,4-Difluorobenzene
 Concen: 50.00 ug/l
 RT: 8.553 min Scan# 2119
 Delta R.T. 0.003 min
 Lab File: VN065457.D
 Acq: 8 Jan 2021 20:46

Tgt Ion:114 Resp: 451008
 Ion Ratio Lower Upper
 114 100
 63 18.7 0.0 38.6
 88 15.4 0.0 32.6



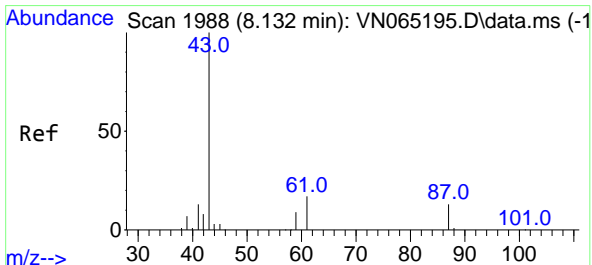
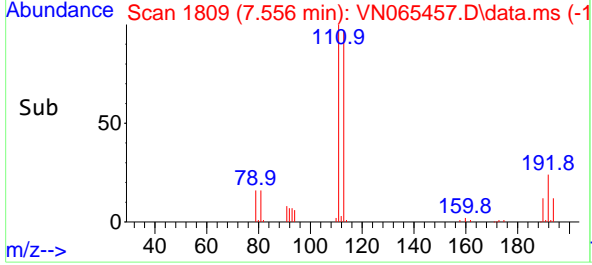
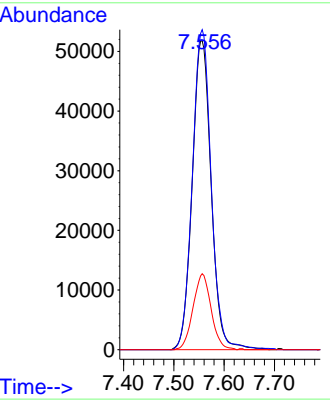
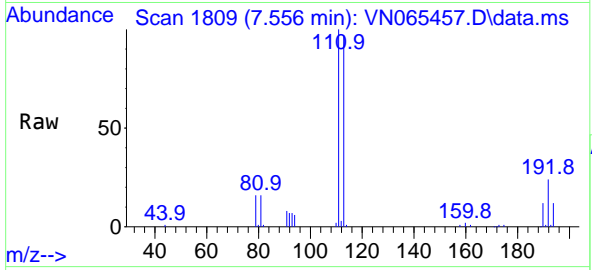


#35
 Dibromofluoromethane
 Concen: 49.91 ug/l
 RT: 7.556 min Scan# 1809
 Delta R.T. 0.006 min
 Lab File: VN065457.D
 Acq: 8 Jan 2021 20:46

Instrument :
 MSVOA_N
ClientSampled :
 PB133969ZHE#09

Tgt Ion:113 Resp: 135811

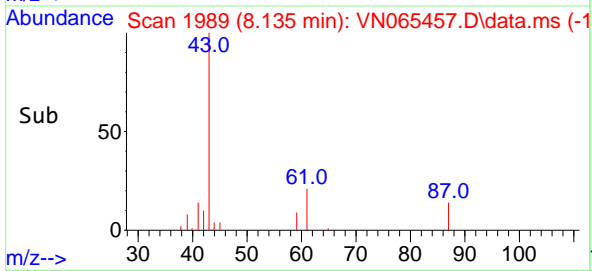
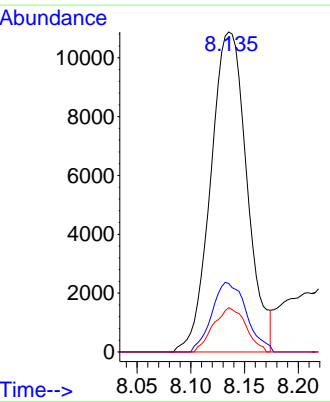
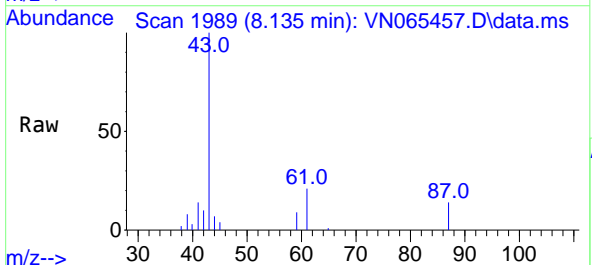
Ion	Ratio	Lower	Upper
113	100		
111	102.7	81.6	122.4
192	23.4	16.2	24.2

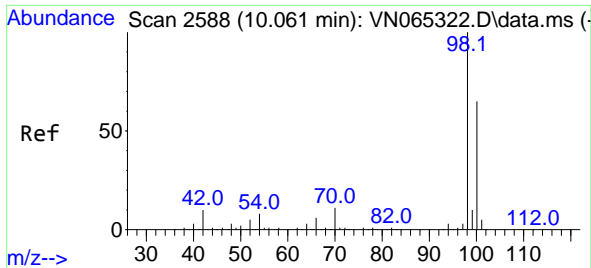


#43
 Isopropyl Acetate
 Concen: 3.64 ug/l
 RT: 8.135 min Scan# 1989
 Delta R.T. 0.003 min
 Lab File: VN065457.D
 Acq: 8 Jan 2021 20:46

Tgt Ion: 43 Resp: 25497

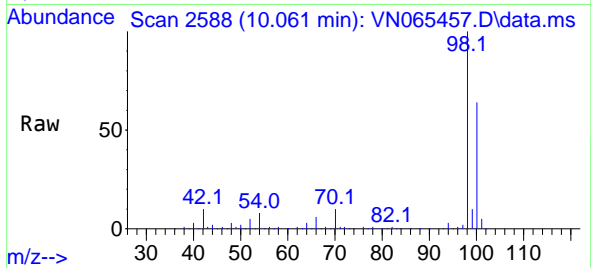
Ion	Ratio	Lower	Upper
43	100		
61	20.8	17.2	25.8
87	12.4	11.4	17.0



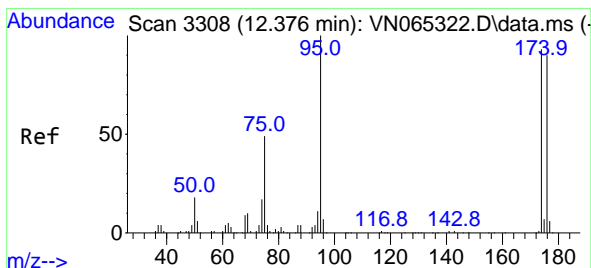
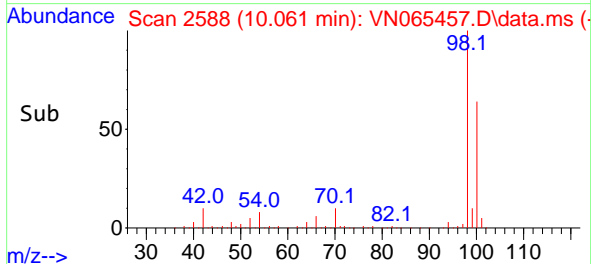
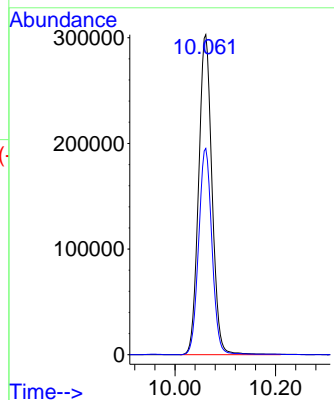


#50
 Toluene-d8
 Concen: 54.90 ug/l
 RT: 10.061 min Scan# 2588
 Delta R.T. 0.003 min
 Lab File: VN065457.D
 Acq: 8 Jan 2021 20:46

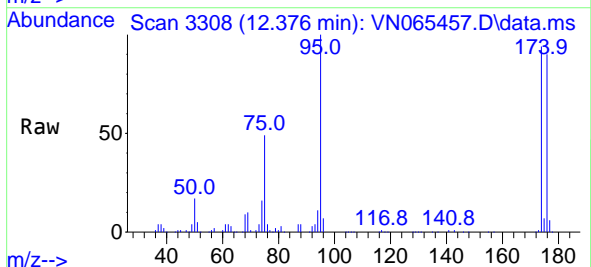
Instrument :
 MSVOA_N
 ClientSampled :
 PB133969ZHE#09



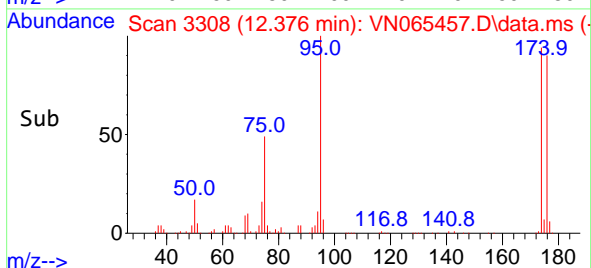
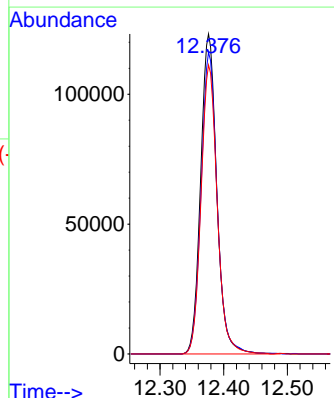
Tgt Ion: 98 Resp: 559887
 Ion Ratio Lower Upper
 98 100
 100 64.2 51.7 77.5

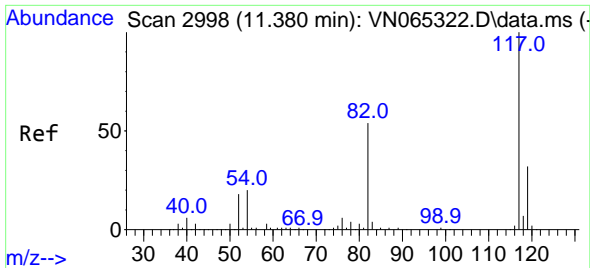


#62
 4-Bromofluorobenzene
 Concen: 53.40 ug/l
 RT: 12.376 min Scan# 3308
 Delta R.T. 0.000 min
 Lab File: VN065457.D
 Acq: 8 Jan 2021 20:46



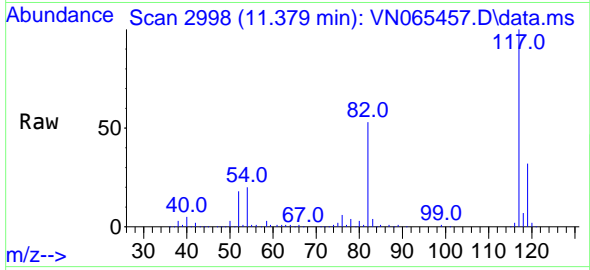
Tgt Ion: 95 Resp: 216914
 Ion Ratio Lower Upper
 95 100
 174 93.9 0.0 160.4
 176 90.6 0.0 158.4



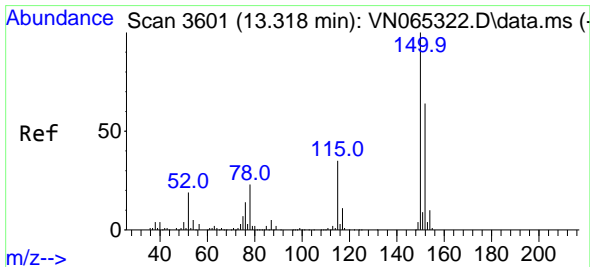
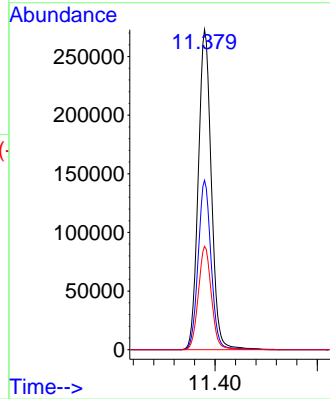
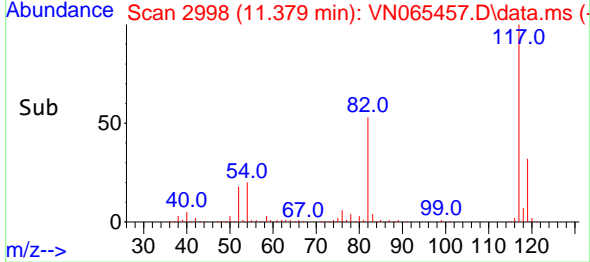


#63
 Chlorobenzene-d5
 Concen: 50.00 ug/l
 RT: 11.379 min Scan# 2998
 Delta R.T. -0.001 min
 Lab File: VN065457.D
 Acq: 8 Jan 2021 20:46

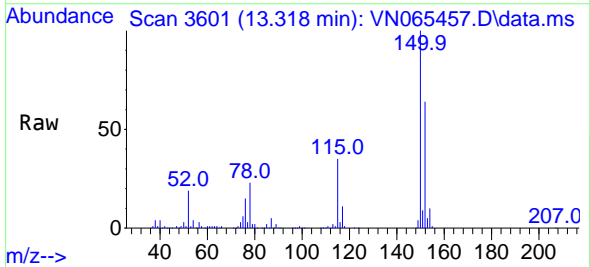
Instrument :
 MSVOA_N
 ClientSampleId :
 PB133969ZHE#09



Tgt Ion:117 Resp: 485201
 Ion Ratio Lower Upper
 117 100
 82 53.0 44.2 66.2
 119 32.3 25.8 38.6



#72
 1,4-Dichlorobenzene-d4
 Concen: 50.00 ug/l
 RT: 13.318 min Scan# 3601
 Delta R.T. 0.000 min
 Lab File: VN065457.D
 Acq: 8 Jan 2021 20:46



Tgt Ion:152 Resp: 192588
 Ion Ratio Lower Upper
 152 100
 115 55.1 29.7 89.1
 150 157.2 0.0 350.6

