

Data Path : Z:\VOASRV\HPCHEM1\MSVOA\_N\DATA\VN011019\  
 Data File : VN053341.D  
 Acq On : 10 Jan 2019 15:01  
 Operator : MD\SY  
 Sample : K1005-04  
 Misc : 5.00mL/MSVOA\_N/WATER  
 ALS Vial : 14 Sample Multiplier: 28

Instrument :  
 MSVOA\_N  
 ClientSampleId :  
 HR-06-010918-B

Quant Time: Jan 11 05:46:40 2019  
 Quant Method : Z:\VOASRV\HPCHEM1\MSVOA\_N\METHODS\82N010519W.M  
 Quant Title : SW846 8260  
 QLast Update : Mon Jan 07 09:34:27 2019  
 Response via : Initial Calibration

Internal Standards	R.T.	QIon	Response	Conc	Units	Dev(Min)
1) Pentafluorobenzene	7.66	168	1028553	50.00	ug/l	0.00
34) 1,4-Difluorobenzene	8.58	114	1596871	50.00	ug/l	0.00
63) Chlorobenzene-d5	11.41	117	1509702	50.00	ug/l	0.00
72) 1,4-Dichlorobenzene-d4	13.35	152	632875	50.00	ug/l	0.00

## System Monitoring Compounds

33) 1,2-Dichloroethane-d4	8.03	65	510651	47.72	ug/l	0.00
Spiked Amount	50.000		Recovery	=	95.44%	
35) Dibromofluoromethane	7.59	113	452928	49.82	ug/l	0.00
Spiked Amount	50.000		Recovery	=	99.64%	
50) Toluene-d8	10.09	98	1980994	50.51	ug/l	0.00
Spiked Amount	50.000		Recovery	=	101.02%	
62) 4-Bromofluorobenzene	12.40	95	693480	50.51	ug/l	0.00
Spiked Amount	50.000		Recovery	=	101.02%	

## Target Compounds

						Qvalue
5) Bromomethane	2.52	94	1890	0.239	ug/l	94
13) Acrolein	3.61	56	202	0.250	ug/l #	1
14) Allyl chloride	4.54	41	21765	1.407	ug/l #	25
16) Acetone	3.82	43	25555	7.757	ug/l	97
17) Carbon Disulfide	4.05	76	5995	0.203	ug/l	97
18) Methyl Acetate	4.34	43	4966	0.513	ug/l #	78
20) Methylene Chloride	4.55	84	569671	49.567	ug/l	98
25) 2-Butanone	6.84	43	1805	0.411	ug/l	98
29) Tetrahydrofuran	7.21	42	1989	0.687	ug/l #	48
31) Cyclohexane	7.66	56	17054	0.742	ug/l #	1
36) 1,1-Dichloropropene	7.66	75	67552	4.531	ug/l #	48
38) Carbon Tetrachloride	7.66	117	88904	6.461	ug/l #	16
43) Isopropyl Acetate	8.17	43	41978	2.198	ug/l #	80
48) Methyl methacrylate	9.18	41	12355	1.424	ug/l #	12
49) 1,4-Dioxane	9.20	88	520	5.624	ug/l #	1
51) 4-Methyl-2-Pentanone	9.99	43	6084	0.633	ug/l	99
54) cis-1,3-Dichloropropene	9.90	75	89054	5.191	ug/l #	62
57) 1,3-Dichloropropane	10.76	76	18729	1.090	ug/l #	42
59) 2-Hexanone	10.76	43	256645	38.992	ug/l #	50
68) m/p-Xylenes	11.62	106	11687	0.558	ug/l	94
69) o-Xylene	11.95	106	16015	0.781	ug/l	93
71) Bromoform	12.40	173	4369	0.539	ug/l #	1
76) 1,2,3-Trichloropropane	12.40	75	321652	34.845	ug/l #	100
78) n-propylbenzene	12.59	91	19611	0.368	ug/l	99
80) 1,3,5-Trimethylbenzene	12.73	105	85144	2.243	ug/l	99
81) trans-1,4-Dichloro-2-buten	12.40	75	321652	102.521	ug/l #	14
84) 1,2,4-Trimethylbenzene	13.04	105	118828	3.073	ug/l	99
85) sec-Butylbenzene	13.17	105	10637	0.242	ug/l	88
86) p-Isopropyltoluene	13.29	119	11497	0.302	ug/l	96
89) n-Butylbenzene	13.62	91	15488	0.486	ug/l #	81
90) Hexachloroethane	13.89	117	4537	0.744	ug/l #	8
93) 1,2,4-Trichlorobenzene	14.91	180	7594	1.164	ug/l #	79
94) Hexachlorobutadiene	15.01	225	2444	0.458	ug/l	83
95) Naphthalene	15.13	128	109299	9.823	ug/l	99

Data Path : Z:\VOASRV\HPCHEM1\MSVOA\_N\DATA\VN011019\  
 Data File : VN053341.D  
 Acq On : 10 Jan 2019 15:01  
 Operator : MD\SY  
 Sample : K1005-04  
 Misc : 5.00mL/MSVOA\_N/WATER  
 ALS Vial : 14 Sample Multiplier: 28

Instrument :  
 MSVOA\_N  
 ClientSampleId :  
 HR-06-010918-B

Quant Time: Jan 11 05:46:40 2019  
 Quant Method : Z:\VOASRV\HPCHEM1\MSVOA\_N\METHODS\82N010519W.M  
 Quant Title : SW846 8260  
 QLast Update : Mon Jan 07 09:34:27 2019  
 Response via : Initial Calibration

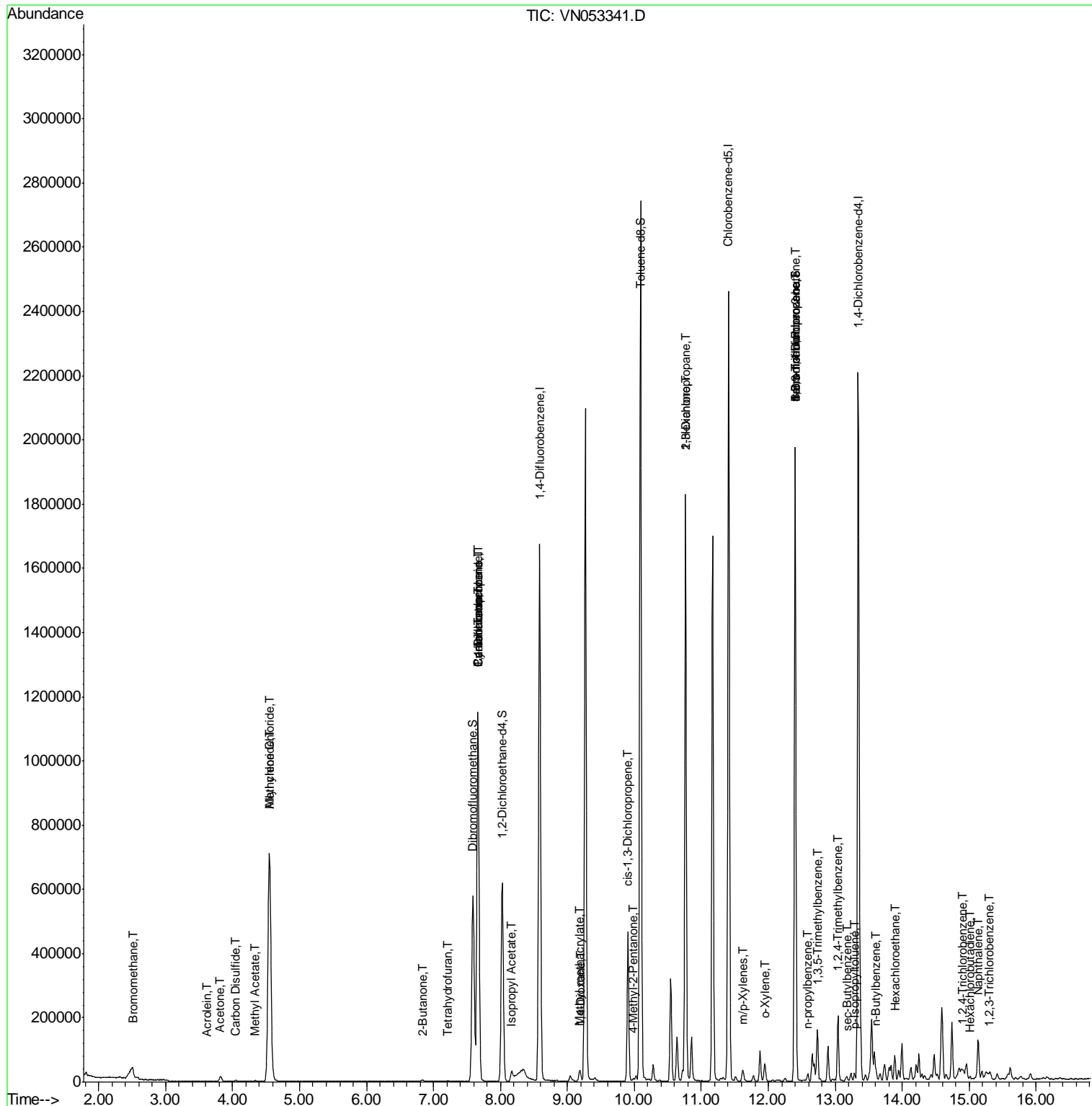
Internal Standards	R.T.	QIon	Response	Conc	Units	Dev(Min)
96) 1,2,3-Trichlorobenzene	15.31	180	7905	1.851	ug/l #	80

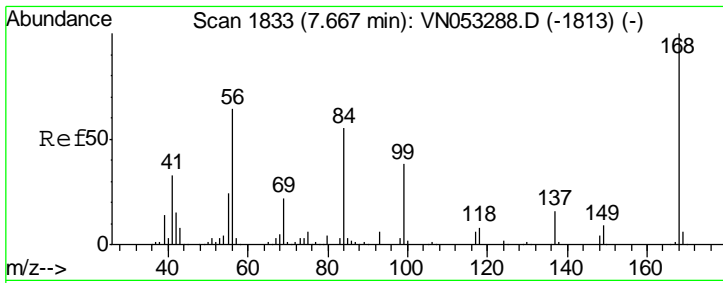
(#) = qualifier out of range (m) = manual integration (+) = signals summed

Data Path : Z:\VOASRV\HPCHEM1\MSVOA\_N\DATA\VN011019\  
 Data File : VN053341.D  
 Acq On : 10 Jan 2019 15:01  
 Operator : MD\SY  
 Sample : K1005-04  
 Misc : 5.00mL/MSVOA\_N/WATER  
 ALS Vial : 14 Sample Multiplier: 28

Instrument :  
 MSVOA\_N  
 Client Sampled :  
 HR-06-010918-B

Quant Time: Jan 11 05:46:40 2019  
 Quant Method : Z:\VOASRV\HPCHEM1\MSVOA\_N\METHODS\82N010519W.M  
 Quant Title : SW846 8260  
 QLast Update : Mon Jan 07 09:34:27 2019  
 Response via : Initial Calibration

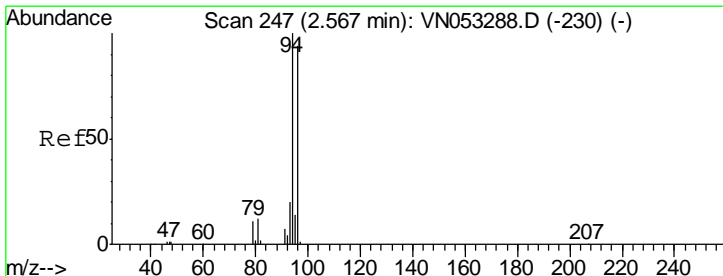
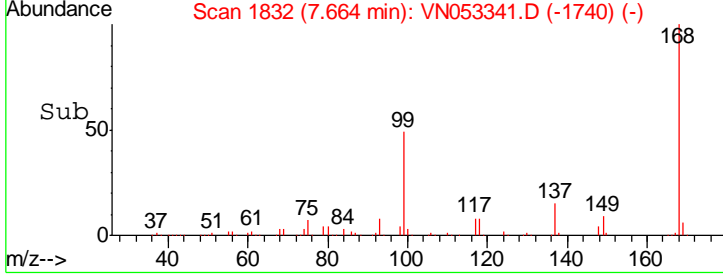
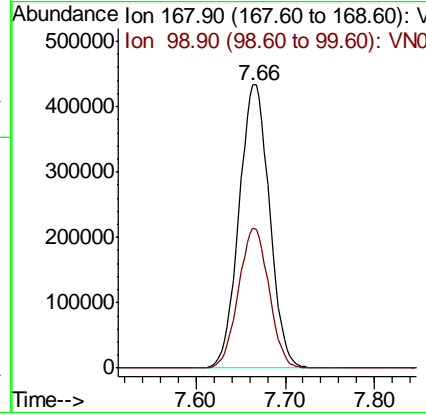
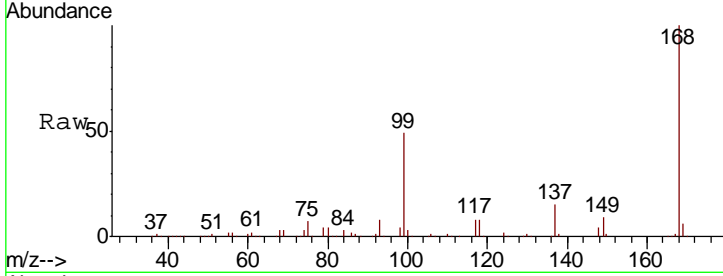




#1  
 Pentafluorobenzene  
 Concen: 50.000 ug/l  
 RT: 7.66 min Scan# 1832  
 Delta R.T. -0.00 min  
 Lab File: VN053341.D  
 Acq: 10 Jan 2019 15:01

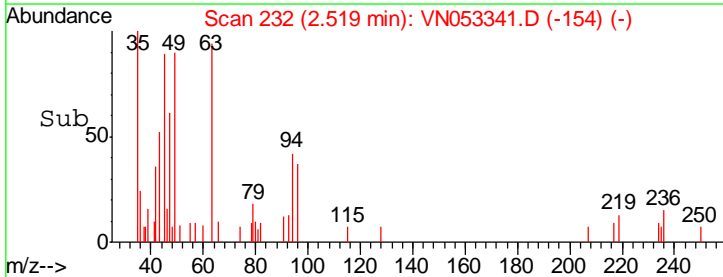
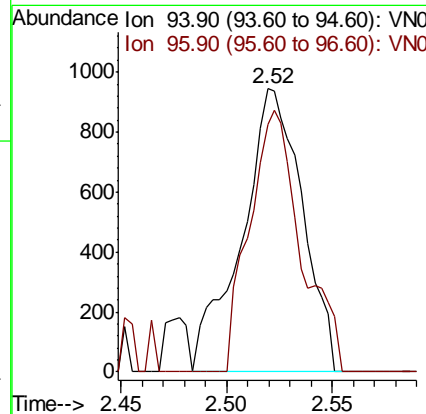
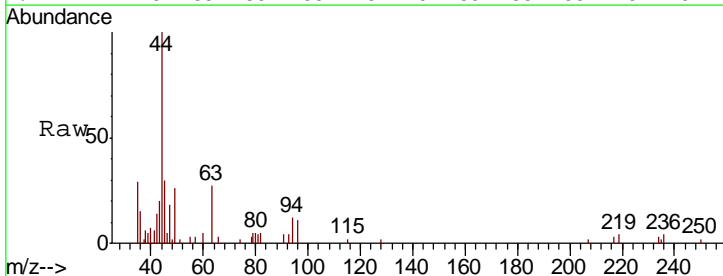
Instrument :  
 MSVOA\_N  
 ClientSampled :  
 HR-06-010918-B

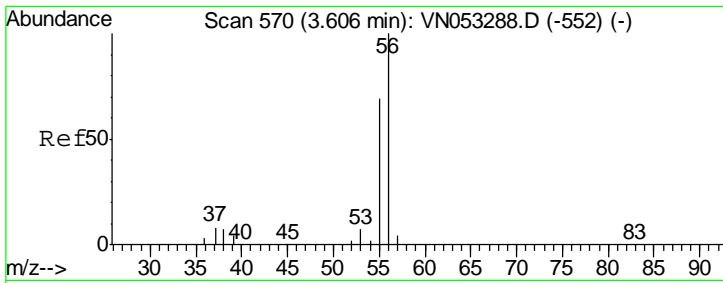
Tgt Ion: 168 Resp: 1028553  
 Ion Ratio Lower Upper  
 168 100  
 99 49.4 39.1 58.7



#5  
 Bromomethane  
 Concen: 0.239 ug/l  
 RT: 2.52 min Scan# 232  
 Delta R.T. -0.05 min  
 Lab File: VN053341.D  
 Acq: 10 Jan 2019 15:01

Tgt Ion: 94 Resp: 1890  
 Ion Ratio Lower Upper  
 94 100  
 96 87.6 74.9 112.3

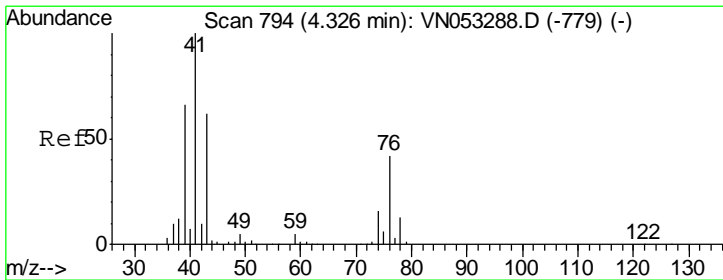
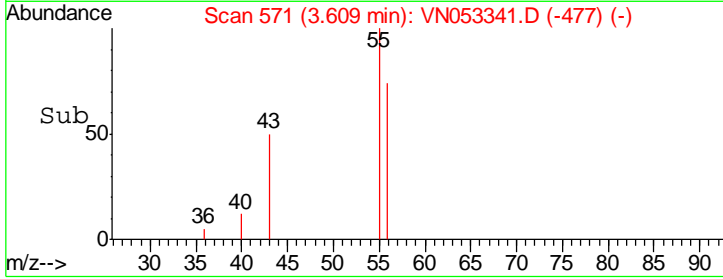
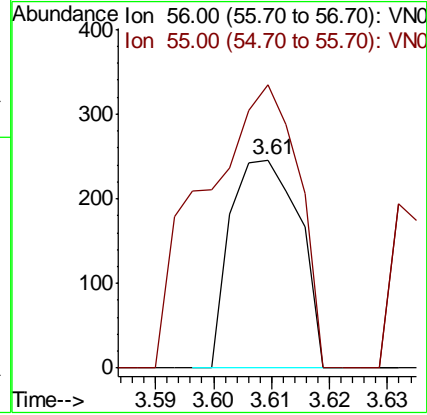
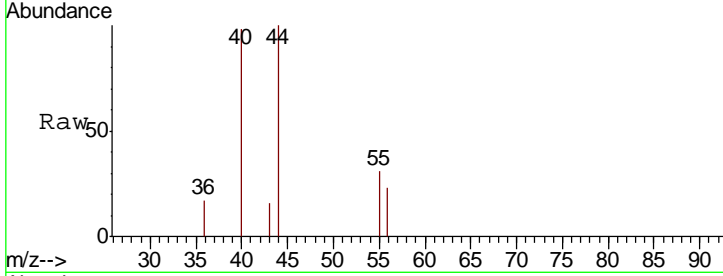




#13  
 Acrolein  
 Concen: 0.250 ug/l  
 RT: 3.61 min Scan# 571  
 Delta R.T. 0.00 min  
 Lab File: VN053341.D  
 Acq: 10 Jan 2019 15:01

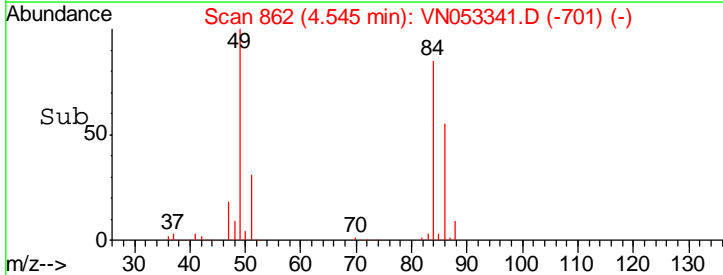
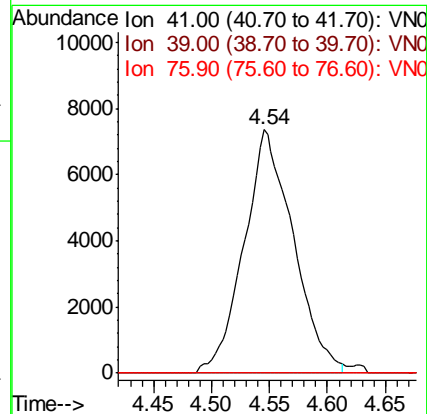
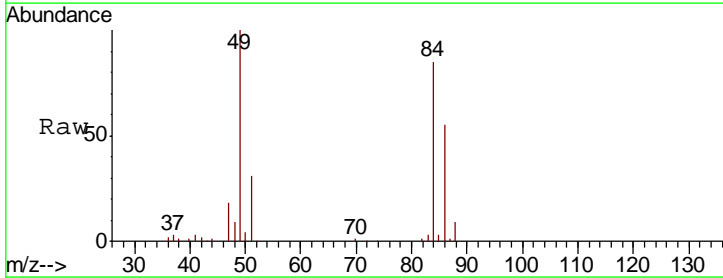
Instrument :  
 MSVOA\_N  
 ClientSampled :  
 HR-06-010918-B

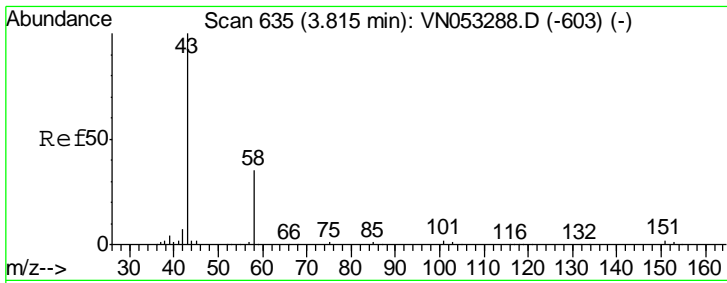
Tgt Ion: 56 Resp: 202  
 Ion Ratio Lower Upper  
 56 100  
 55 187.6 56.3 84.5#



#14  
 Allyl chloride  
 Concen: 1.407 ug/l  
 RT: 4.54 min Scan# 862  
 Delta R.T. 0.22 min  
 Lab File: VN053341.D  
 Acq: 10 Jan 2019 15:01

Tgt Ion: 41 Resp: 21765  
 Ion Ratio Lower Upper  
 41 100  
 39 0.0 51.9 77.9#  
 76 0.0 31.2 46.8#

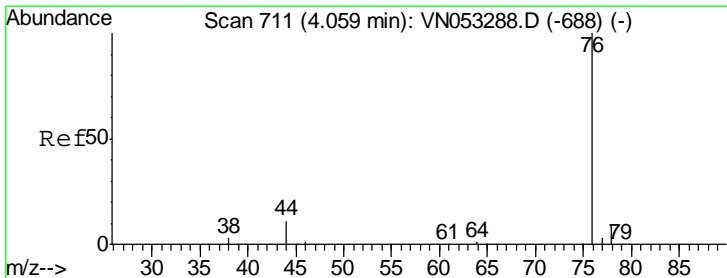
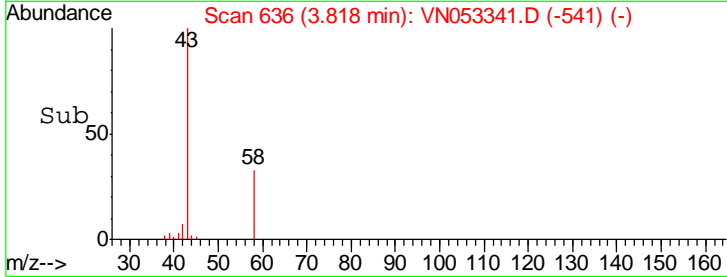
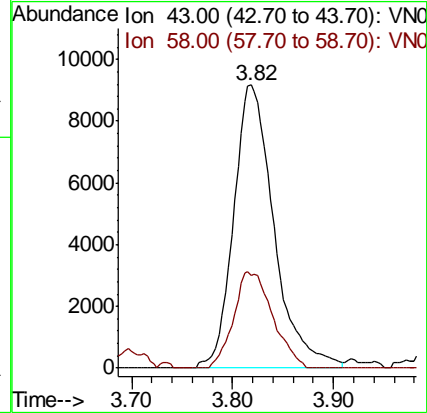
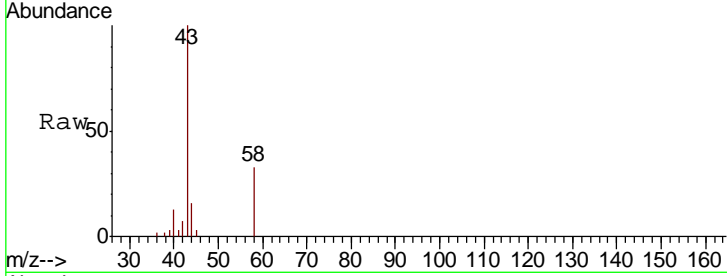




#16  
 Acetone  
 Concen: 7.757 ug/l  
 RT: 3.82 min Scan# 636  
 Delta R.T. 0.00 min  
 Lab File: VN053341.D  
 Acq: 10 Jan 2019 15:01

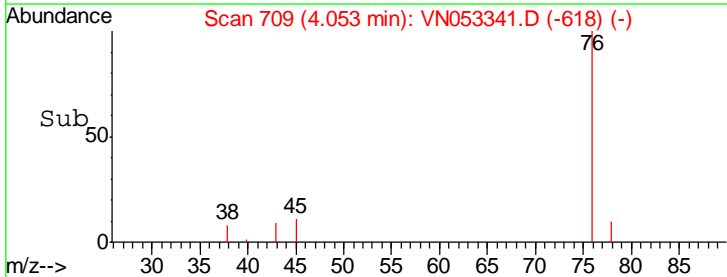
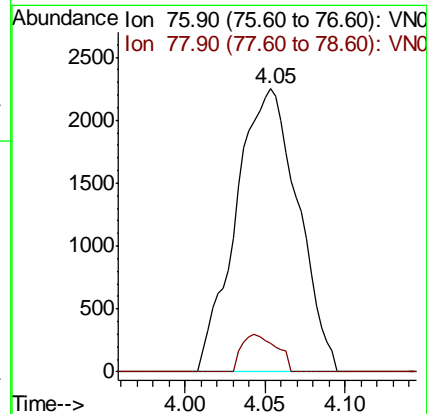
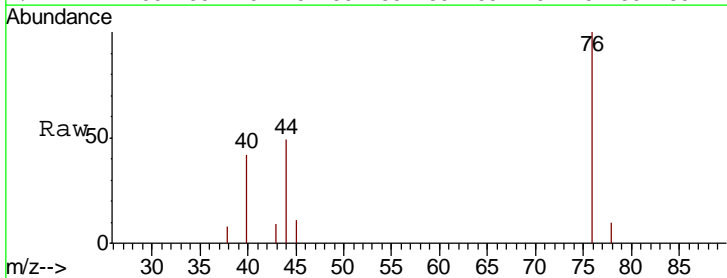
Instrument :  
 MSVOA\_N  
 ClientSampled :  
 HR-06-010918-B

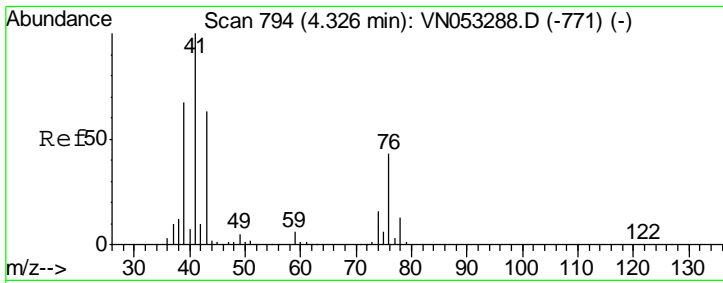
Tgt Ion	Resp	Lower	Upper
43	100		
58	32.9	27.8	41.6



#17  
 Carbon Disulfide  
 Concen: 0.203 ug/l  
 RT: 4.05 min Scan# 709  
 Delta R.T. -0.01 min  
 Lab File: VN053341.D  
 Acq: 10 Jan 2019 15:01

Tgt Ion	Resp	Lower	Upper
76	100		
78	10.0	7.2	10.8

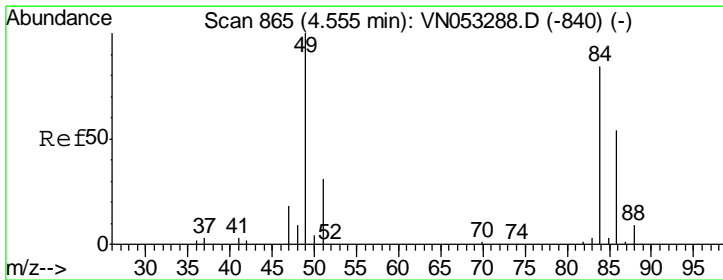
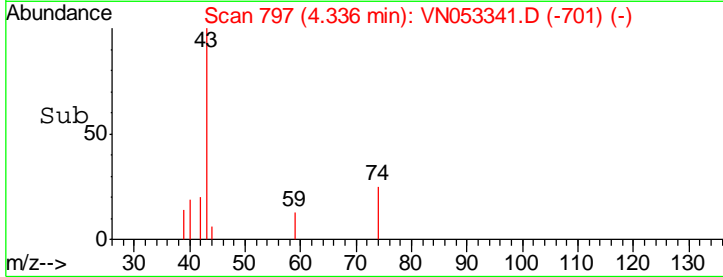
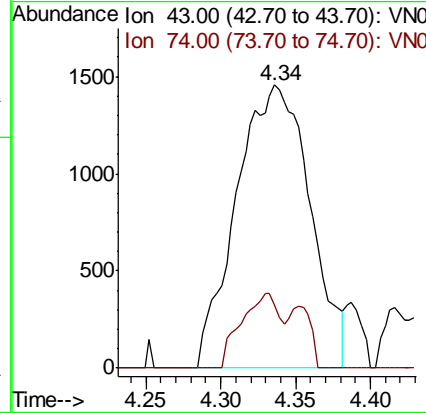
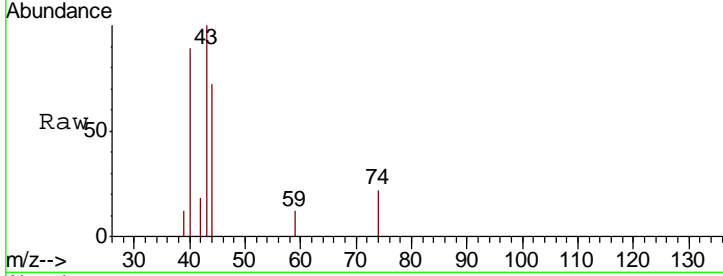




#18  
 Methyl Acetate  
 Concen: 0.513 ug/l  
 RT: 4.34 min Scan# 797  
 Delta R.T. 0.01 min  
 Lab File: VN053341.D  
 Acq: 10 Jan 2019 15:01

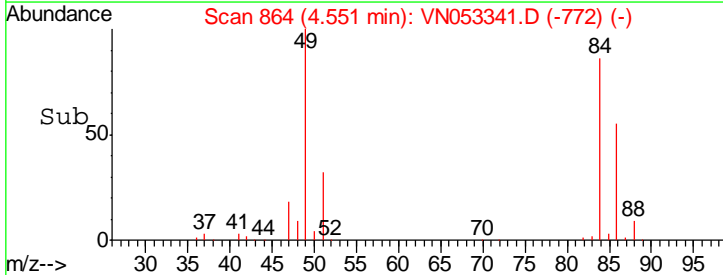
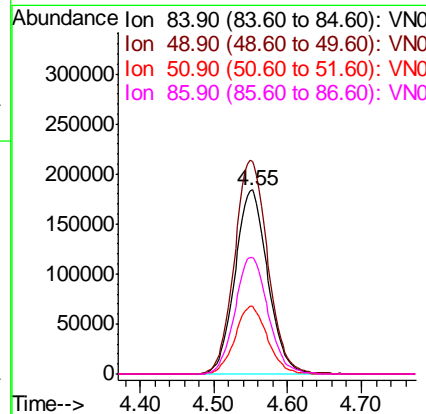
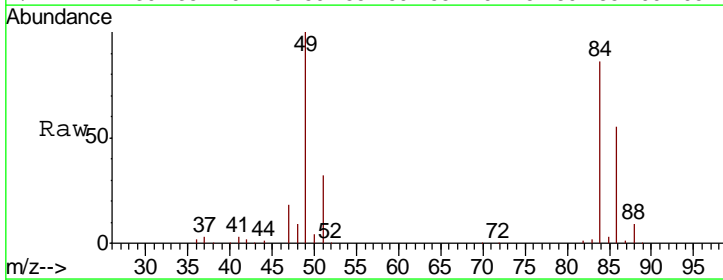
Instrument :  
 MSVOA\_N  
 ClientSampled :  
 HR-06-010918-B

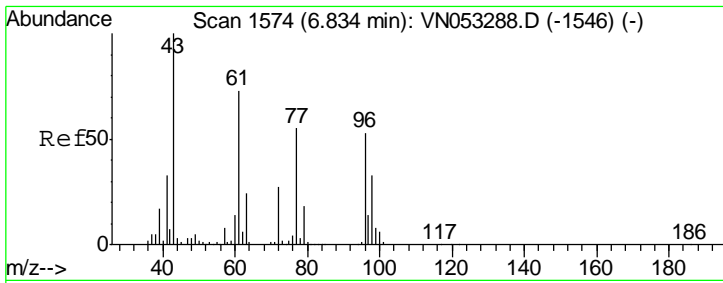
Tgt Ion	Resp	Lower	Upper
43	100		
74	13.9	19.8	29.8#



#20  
 Methylene Chloride  
 Concen: 49.567 ug/l  
 RT: 4.55 min Scan# 864  
 Delta R.T. -0.00 min  
 Lab File: VN053341.D  
 Acq: 10 Jan 2019 15:01

Tgt Ion	Resp	Lower	Upper
84	100		
49	115.7	95.3	142.9
51	36.6	29.0	43.6
86	63.6	51.7	77.5

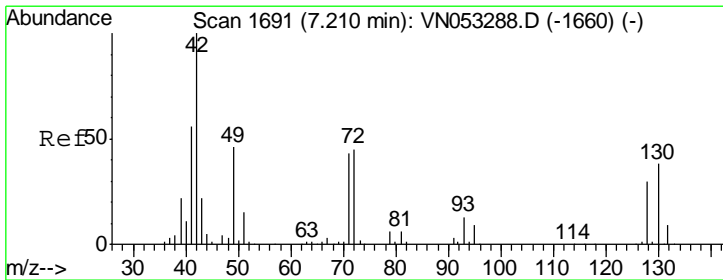
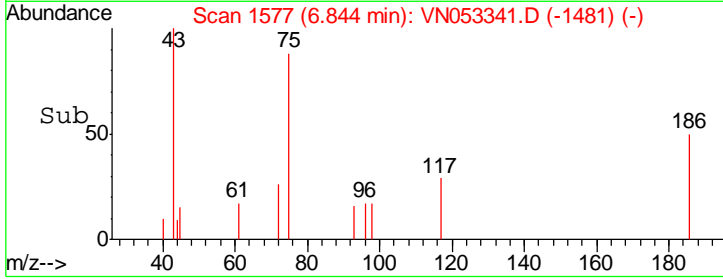
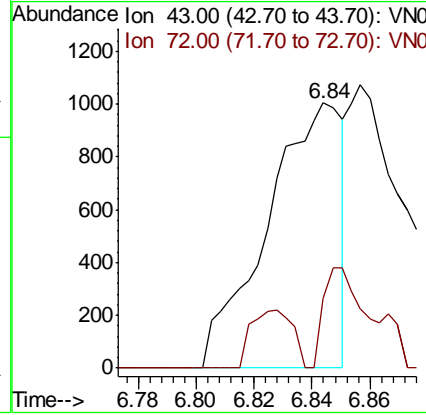
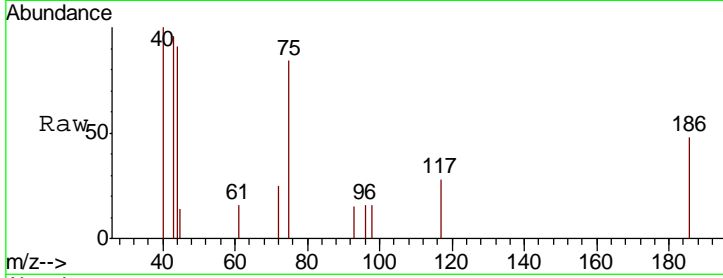




#25  
 2-Butanone  
 Concen: 0.411 ug/l  
 RT: 6.84 min Scan# 1577  
 Delta R.T. 0.01 min  
 Lab File: VN053341.D  
 Acq: 10 Jan 2019 15:01

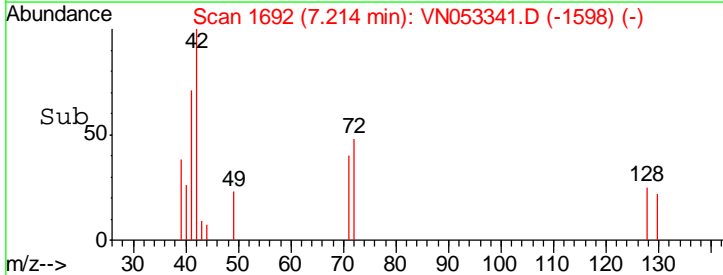
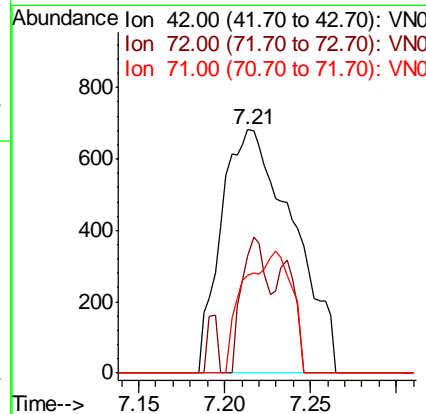
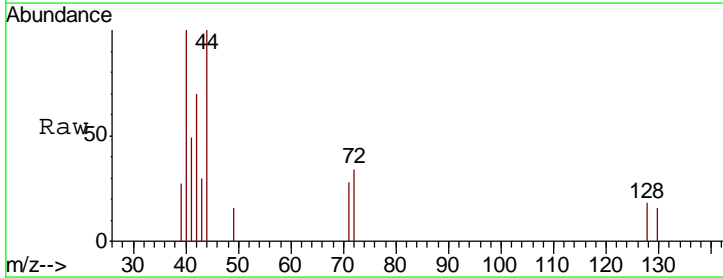
Instrument :  
 MSVOA\_N  
 ClientSampled :  
 HR-06-010918-B

Tgt Ion: 43 Resp: 1805  
 Ion Ratio Lower Upper  
 43 100  
 72 26.4 22.0 33.0

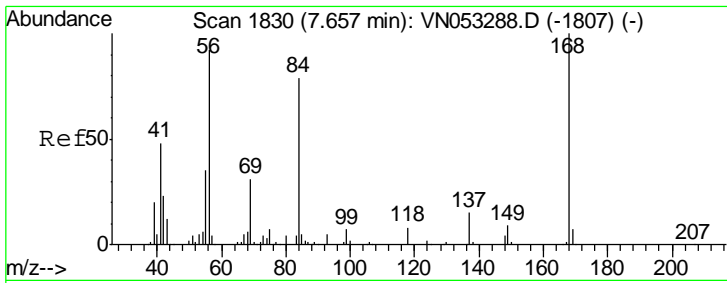


#29  
 Tetrahydrofuran  
 Concen: 0.687 ug/l  
 RT: 7.21 min Scan# 1692  
 Delta R.T. 0.00 min  
 Lab File: VN053341.D  
 Acq: 10 Jan 2019 15:01

Tgt Ion: 42 Resp: 1989  
 Ion Ratio Lower Upper  
 42 100  
 72 19.5 35.6 53.4#  
 71 0.0 33.8 50.8#



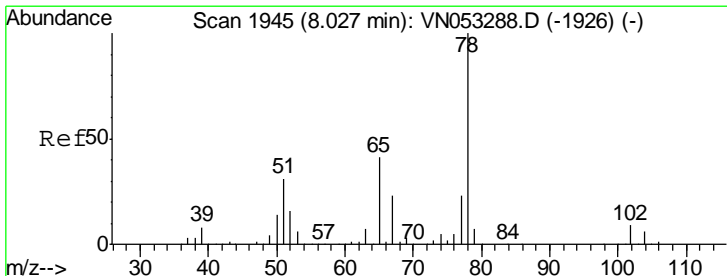
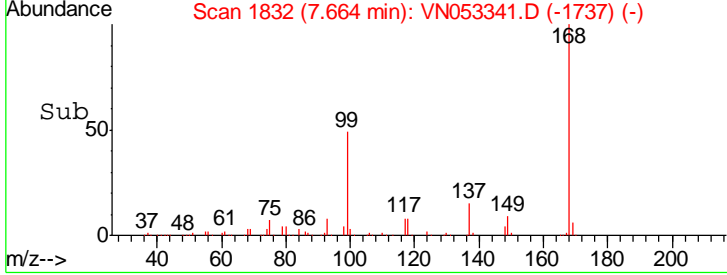
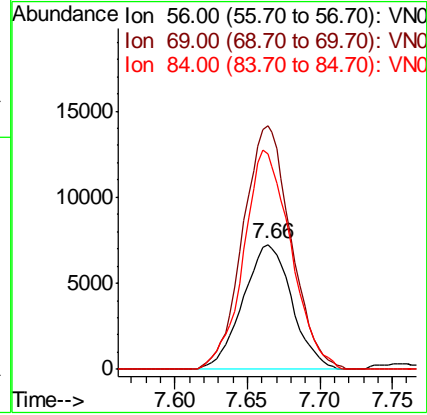
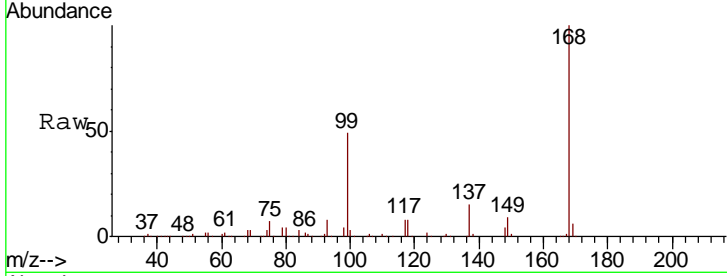




#31  
 Cyclohexane  
 Concen: 0.742 ug/l  
 RT: 7.66 min Scan# 1832  
 Delta R.T. 0.01 min  
 Lab File: VN053341.D  
 Acq: 10 Jan 2019 15:01

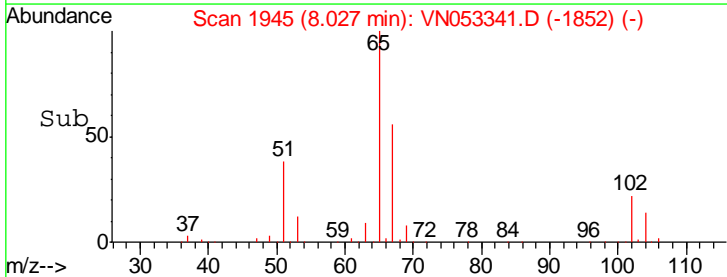
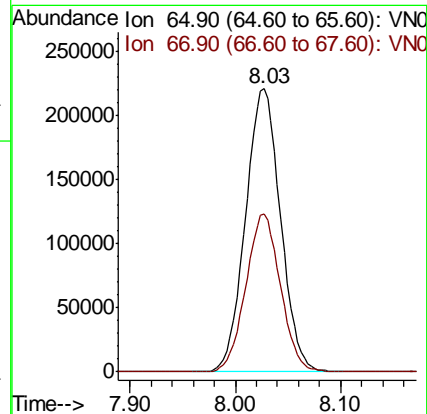
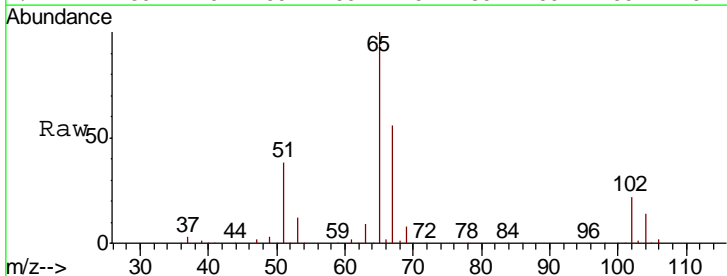
Instrument :  
 MSVOA\_N  
 ClientSampled :  
 HR-06-010918-B

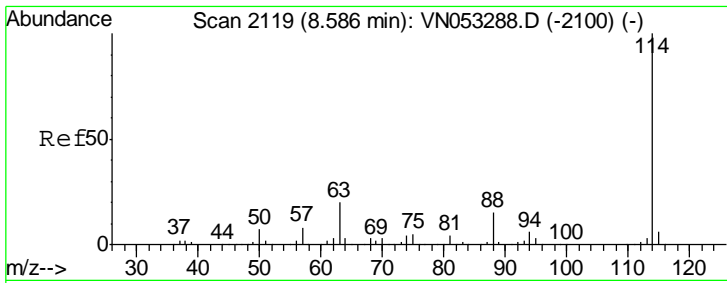
Tgt Ion	Resp	Lower	Upper
56	17054		
69	194.4	26.7	40.1#
84	172.2	68.2	102.4#



#33  
 1,2-Dichloroethane-d4  
 Concen: Below ug/l  
 RT: 8.03 min Scan# 1945  
 Delta R.T. 0.00 min  
 Lab File: VN053341.D  
 Acq: 10 Jan 2019 15:01

Tgt Ion	Resp	Lower	Upper
65	510651		
67	55.2	0.0	111.0

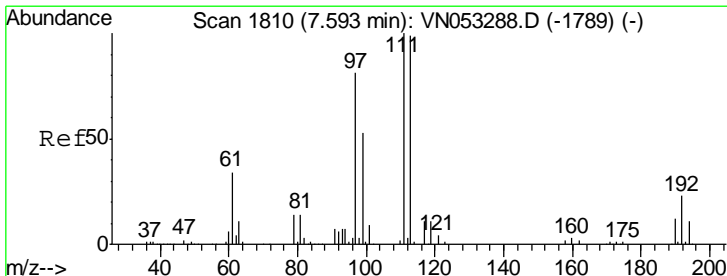
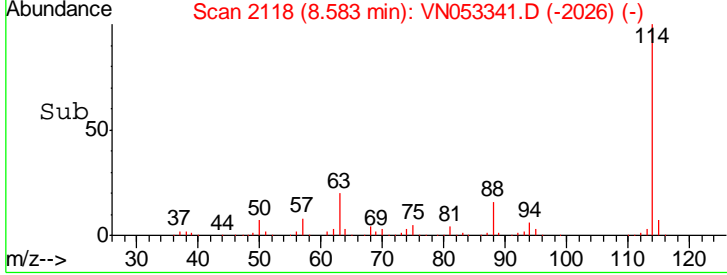
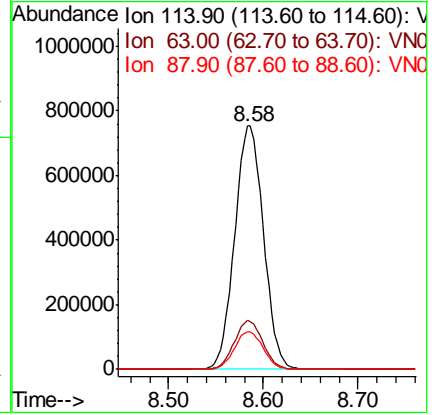
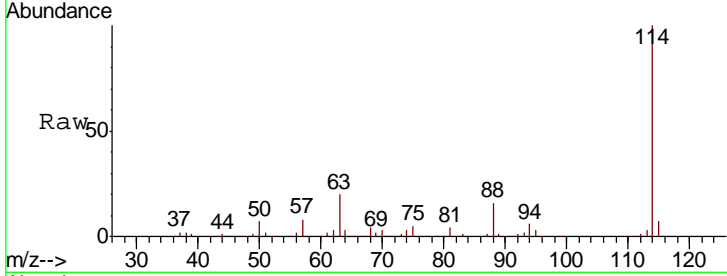




#34  
 1,4-Difluorobenzene  
 Concen: 50.000 ug/l  
 RT: 8.58 min Scan# 2118  
 Delta R.T. -0.00 min  
 Lab File: VN053341.D  
 Acq: 10 Jan 2019 15:01

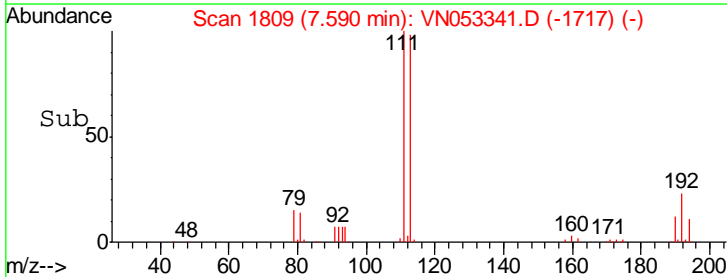
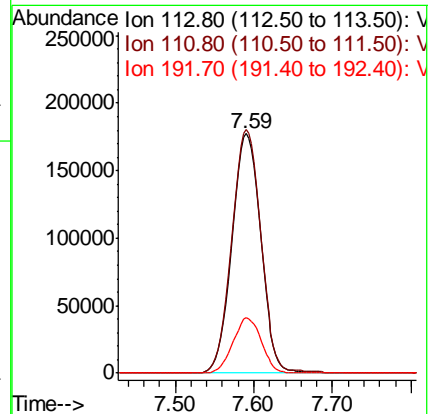
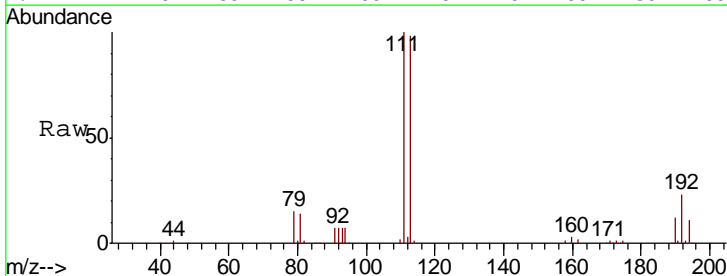
Instrument : MSVOA\_N  
 ClientSampled : HR-06-010918-B

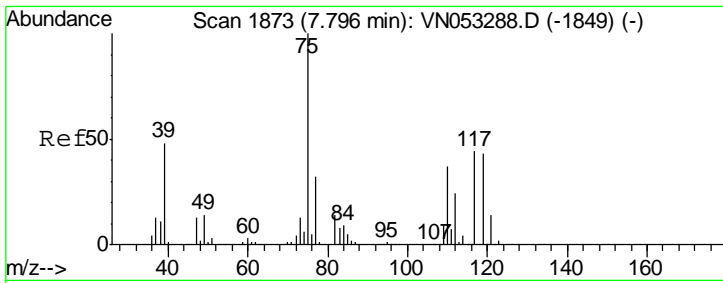
Tgt Ion	Resp	Lower	Upper
114	1596871		
63	19.9	0.0	39.0
88	15.6	0.0	30.8



#35  
 Dibromofluoromethane  
 Concen: 50.000 ug/l  
 RT: 7.59 min Scan# 1809  
 Delta R.T. -0.00 min  
 Lab File: VN053341.D  
 Acq: 10 Jan 2019 15:01

Tgt Ion	Resp	Lower	Upper
113	452928		
111	102.4	81.4	122.2
192	22.7	17.9	26.9

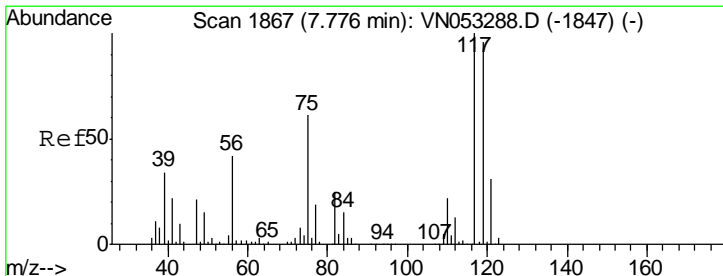
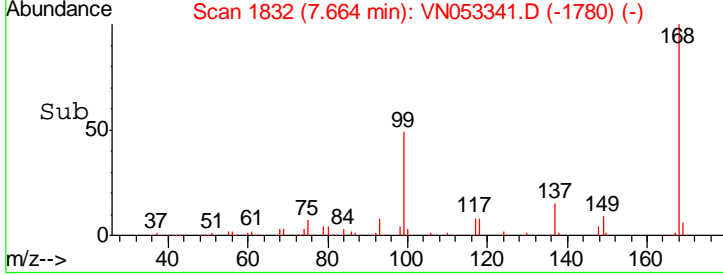
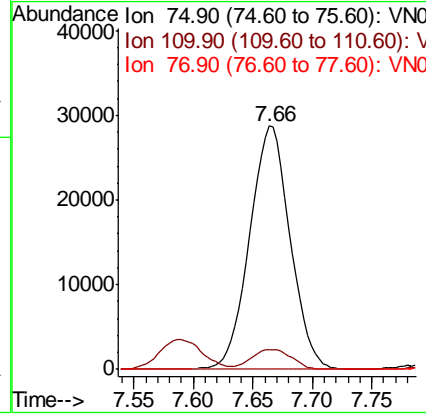
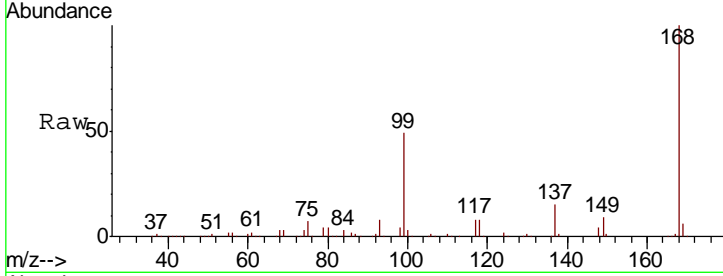




#36  
 1,1-Dichloropropene  
 Concen: 4.531 ug/l  
 RT: 7.66 min Scan# 1832  
 Delta R.T. -0.13 min  
 Lab File: VN053341.D  
 Acq: 10 Jan 2019 15:01

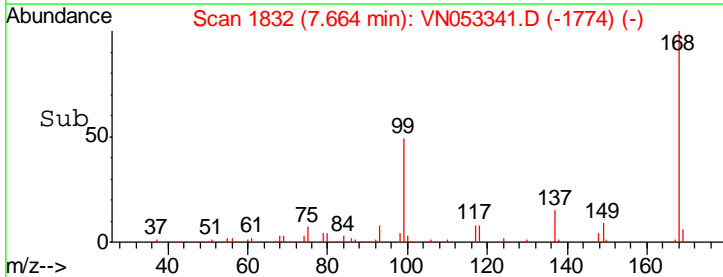
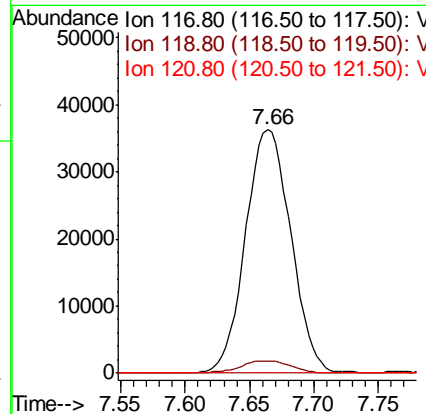
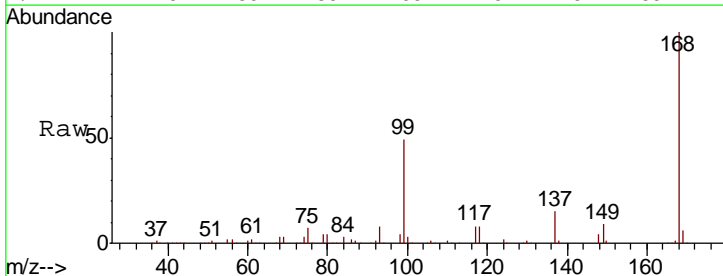
Instrument :  
 MSVOA\_N  
 ClientSampleId :  
 HR-06-010918-B

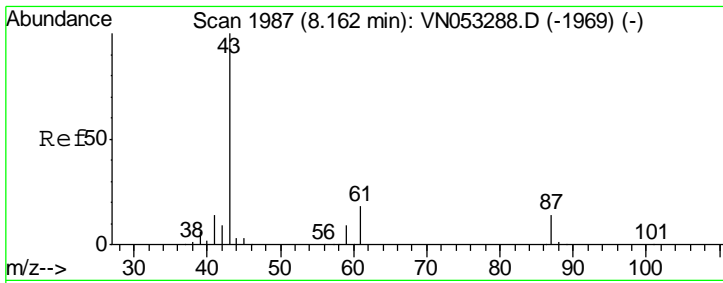
Tgt Ion	Resp	Lower	Upper
75	100		
110	8.1	18.4	55.0#
77	0.0	25.3	37.9#



#38  
 Carbon Tetrachloride  
 Concen: 6.461 ug/l  
 RT: 7.66 min Scan# 1832  
 Delta R.T. -0.11 min  
 Lab File: VN053341.D  
 Acq: 10 Jan 2019 15:01

Tgt Ion	Resp	Lower	Upper
117	100		
119	5.1	76.6	115.0#
121	0.0	25.0	37.4#

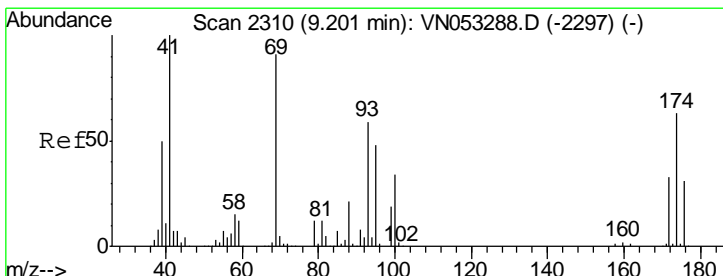
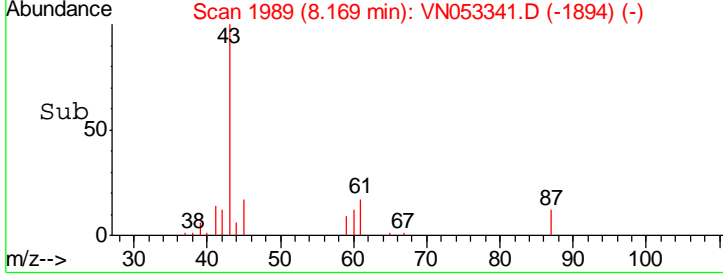
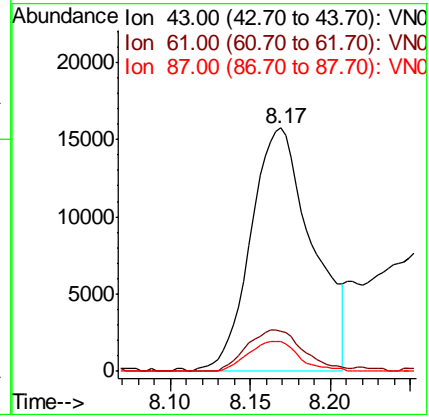
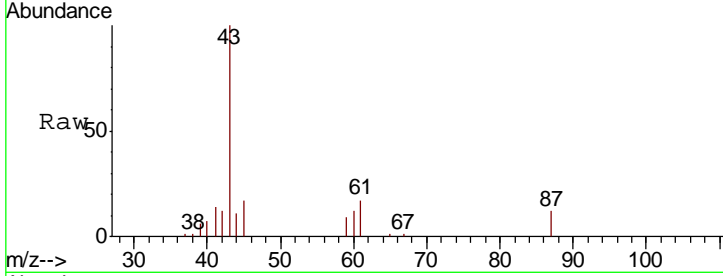




#43  
 Isopropyl Acetate  
 Concen: 2.198 ug/l  
 RT: 8.17 min Scan# 1989  
 Delta R.T. 0.01 min  
 Lab File: VN053341.D  
 Acq: 10 Jan 2019 15:01

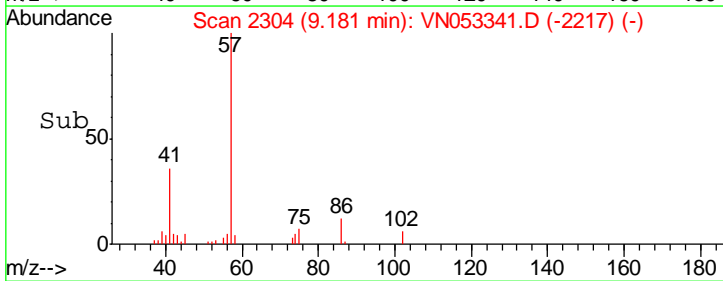
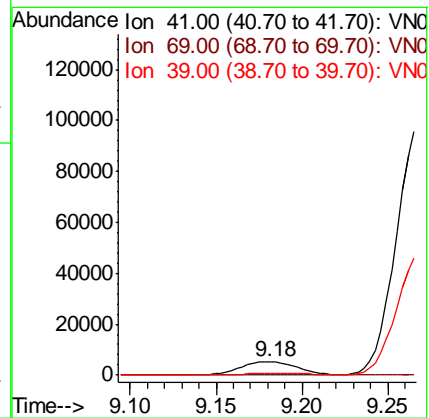
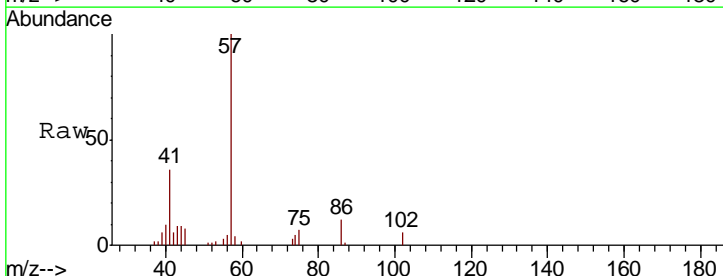
Instrument : MSVOA\_N  
 ClientSampled : HR-06-010918-B

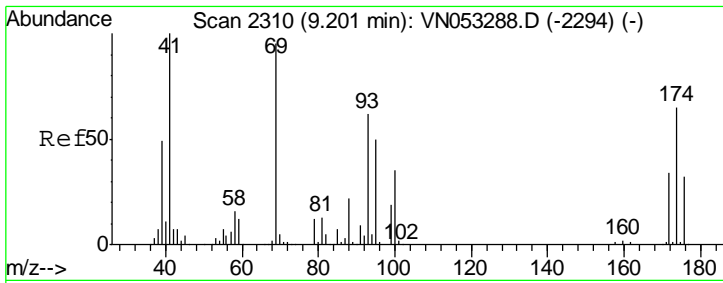
Tgt Ion	Resp	Lower	Upper
43	41978		
61	15.4	23.3	34.9#
87	10.1	10.8	16.2#



#48  
 Methyl methacrylate  
 Concen: 1.424 ug/l  
 RT: 9.18 min Scan# 2304  
 Delta R.T. -0.02 min  
 Lab File: VN053341.D  
 Acq: 10 Jan 2019 15:01

Tgt Ion	Resp	Lower	Upper
41	12355		
69	0.0	73.5	110.3#
39	0.0	41.6	62.4#

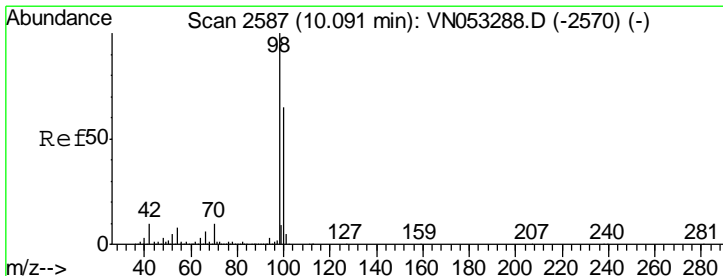
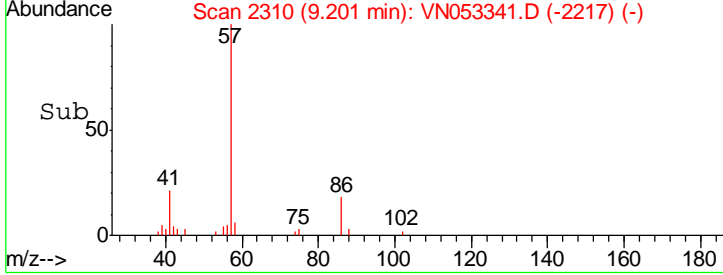
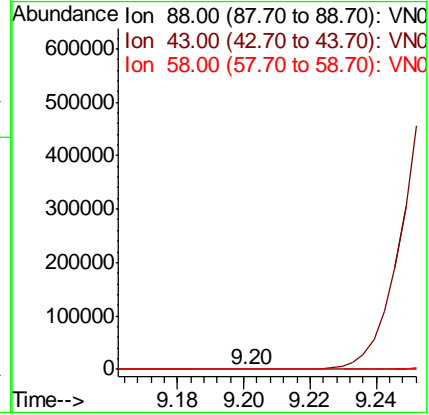
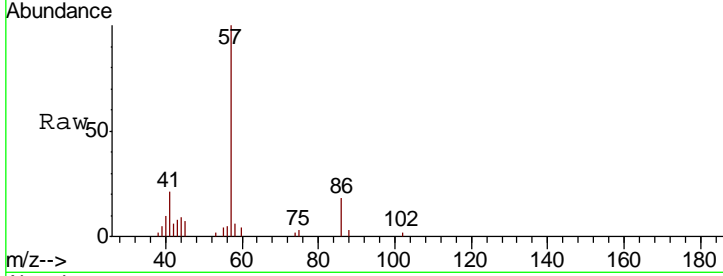




#49  
 1,4-Dioxane  
 Concen: 5.624 ug/l  
 RT: 9.20 min Scan# 2310  
 Delta R.T. 0.00 min  
 Lab File: VN053341.D  
 Acq: 10 Jan 2019 15:01

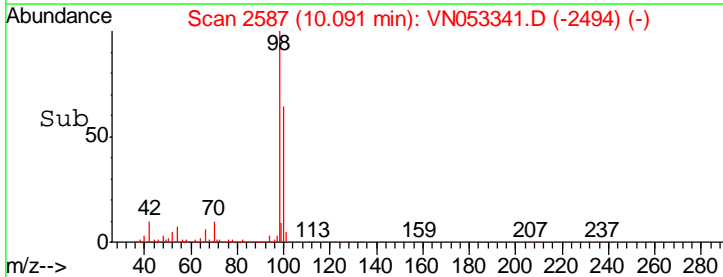
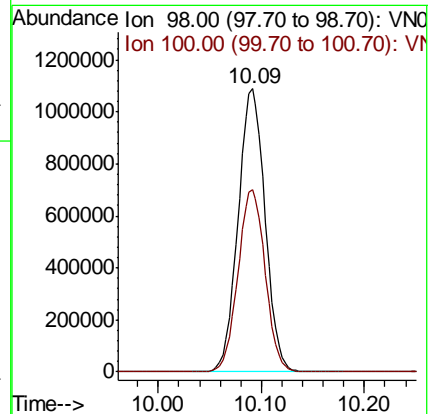
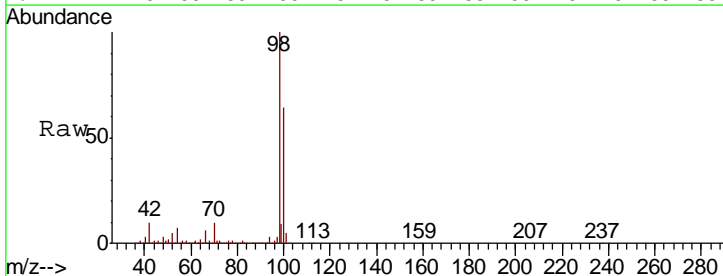
Instrument :  
 MSVOA\_N  
 ClientSampled :  
 HR-06-010918-B

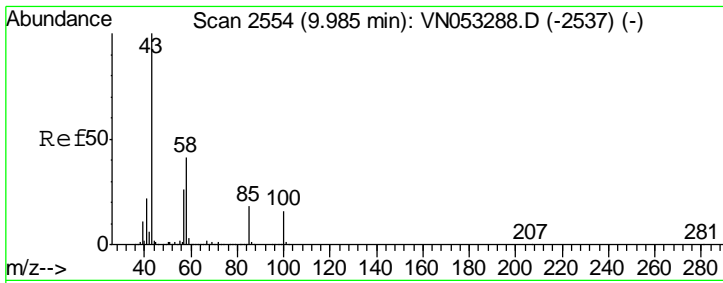
Tgt Ion	Resp	Lower	Upper
88	520		
43	0.0	26.2	39.4#
58	356.9	55.5	83.3#



#50  
 Toluene-d8  
 Concen: 5.624 ug/l  
 RT: 10.09 min Scan# 2587  
 Delta R.T. 0.00 min  
 Lab File: VN053341.D  
 Acq: 10 Jan 2019 15:01

Tgt Ion	Resp	Lower	Upper
98	1980994		
100	64.8	51.5	77.3



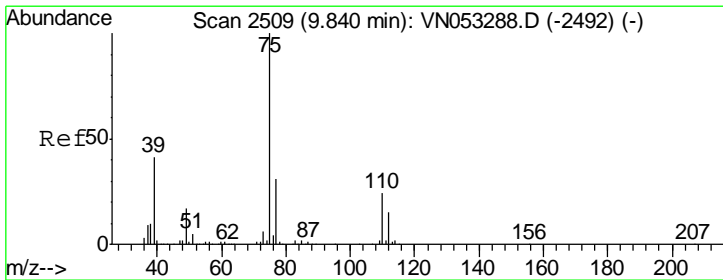
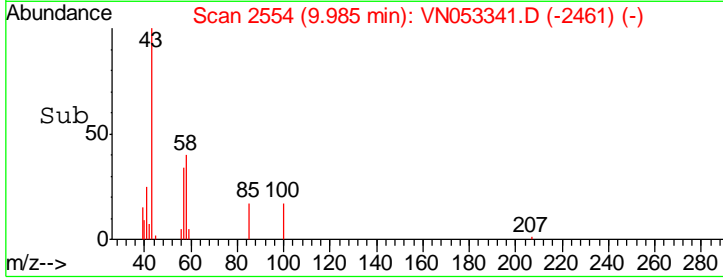
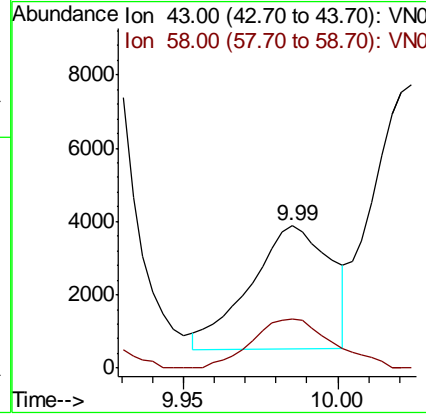
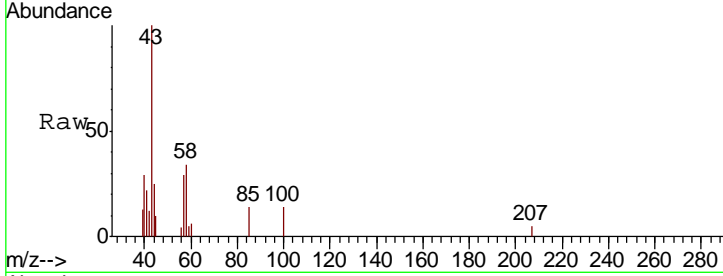


#51  
 4-Methyl-2-Pentanone  
 Concen: 0.633 ug/l  
 RT: 9.99 min Scan# 2554  
 Delta R.T. 0.00 min  
 Lab File: VN053341.D  
 Acq: 10 Jan 2019 15:01

Instrument : MSVOA\_N  
 ClientSampled : HR-06-010918-B

Tgt Ion: 43 Resp: 6084

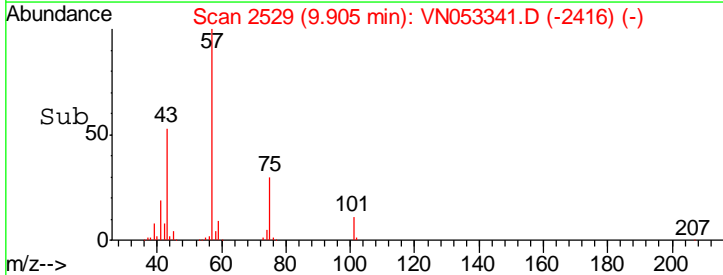
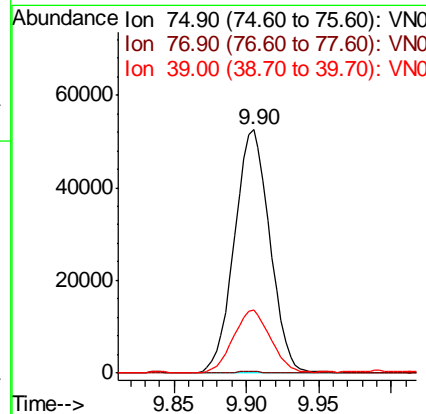
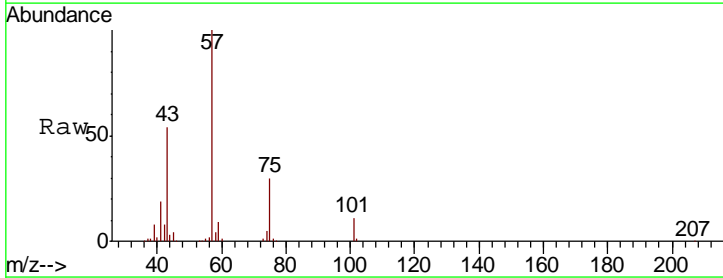
Ion	Ratio	Lower	Upper
43	100		
58	40.3	32.7	49.1

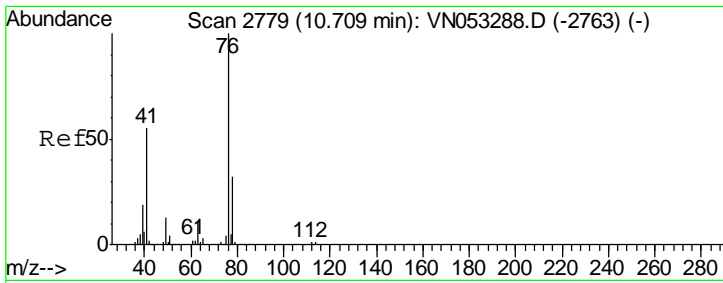


#54  
 cis-1,3-Dichloropropene  
 Concen: 5.191 ug/l  
 RT: 9.90 min Scan# 2529  
 Delta R.T. 0.06 min  
 Lab File: VN053341.D  
 Acq: 10 Jan 2019 15:01

Tgt Ion: 75 Resp: 89054

Ion	Ratio	Lower	Upper
75	100		
77	0.5	25.1	37.7#
39	25.7	33.1	49.7#

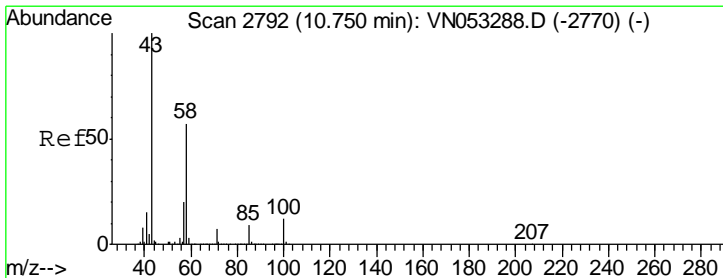
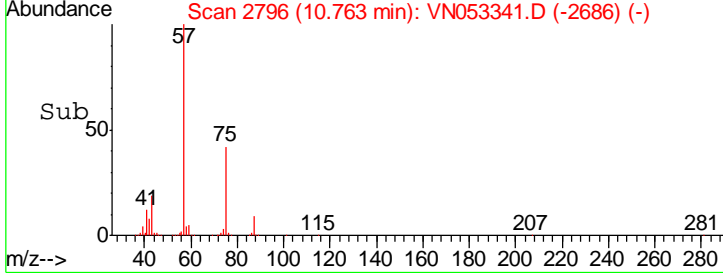
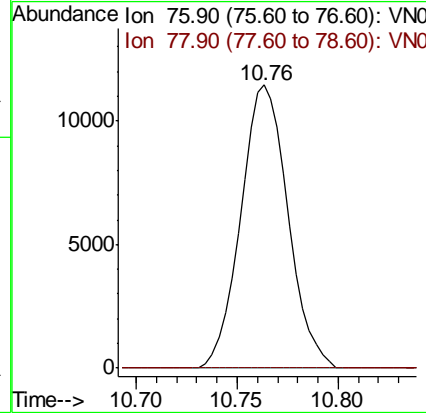
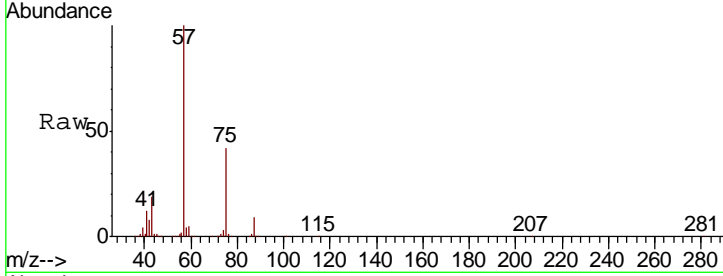




#57  
 1,3-Dichloropropane  
 Concen: 1.090 ug/l  
 RT: 10.76 min Scan# 2796  
 Delta R.T. 0.05 min  
 Lab File: VN053341.D  
 Acq: 10 Jan 2019 15:01

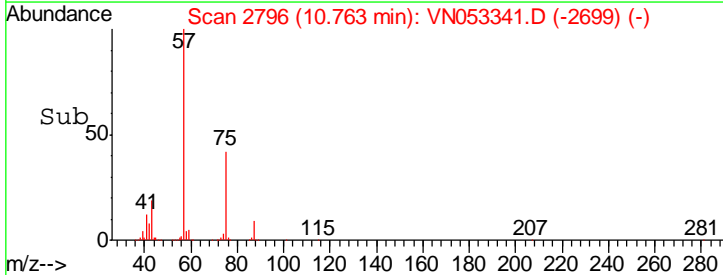
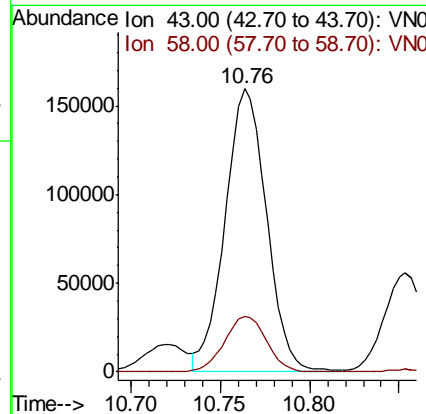
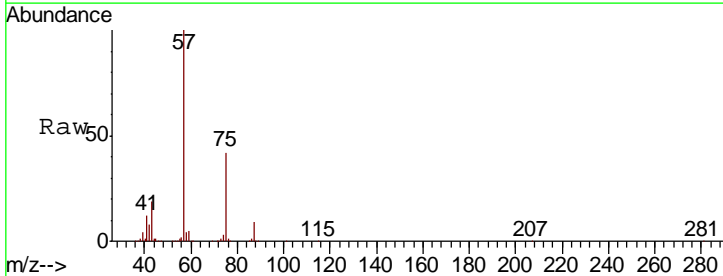
Instrument : MSVOA\_N  
 ClientSampled : HR-06-010918-B

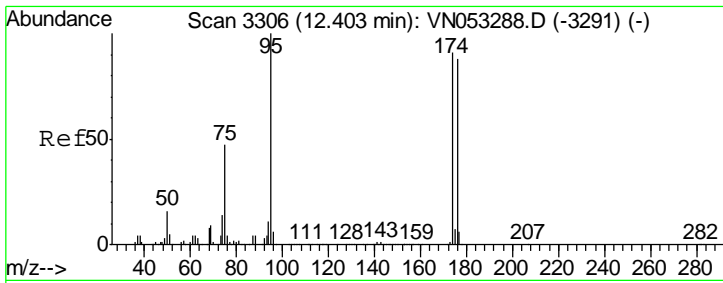
Tgt Ion: 76 Resp: 18729  
 Ion Ratio Lower Upper  
 76 100  
 78 0.0 25.8 38.8#



#59  
 2-Hexanone  
 Concen: 38.992 ug/l  
 RT: 10.76 min Scan# 2796  
 Delta R.T. 0.01 min  
 Lab File: VN053341.D  
 Acq: 10 Jan 2019 15:01

Tgt Ion: 43 Resp: 256645  
 Ion Ratio Lower Upper  
 43 100  
 58 20.1 28.3 85.0#

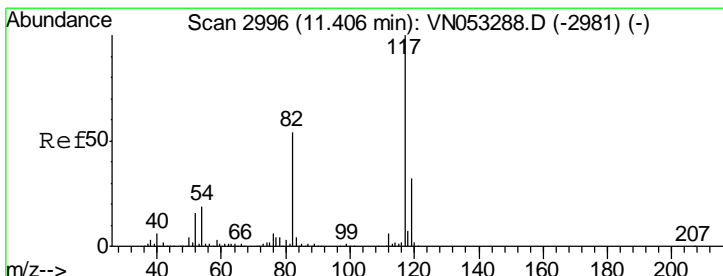
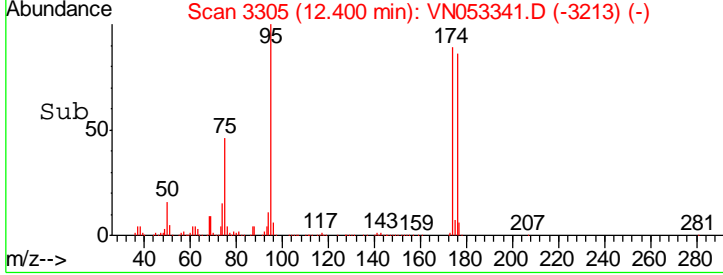
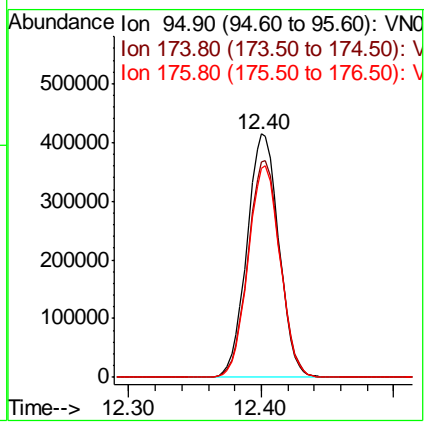
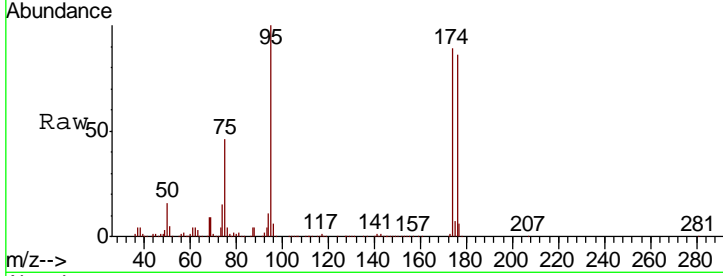




#62  
 4-Bromofluorobenzene  
 Concen: Below ug/l  
 RT: 12.40 min Scan# 3305  
 Delta R.T. -0.00 min  
 Lab File: VN053341.D  
 Acq: 10 Jan 2019 15:01

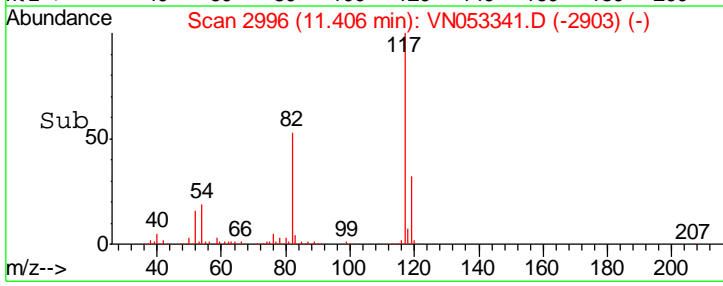
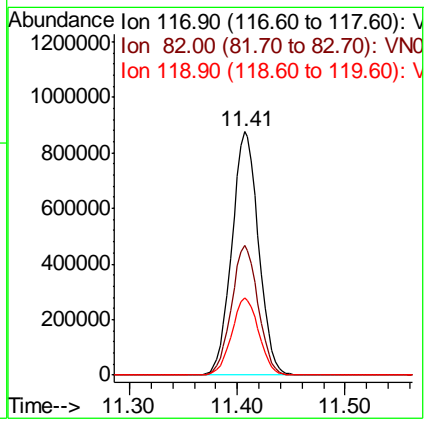
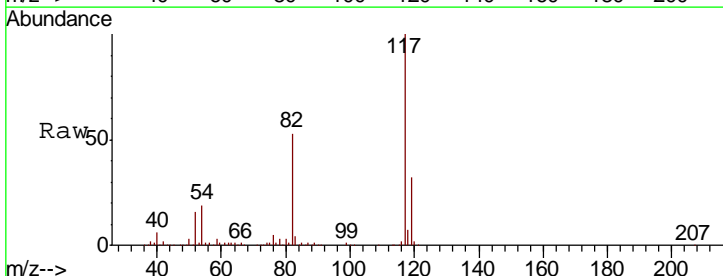
Instrument : MSVOA\_N  
 ClientSampled : HR-06-010918-B

Tgt Ion	Resp	Lower	Upper
95	693480		
174	89.9	0.0	180.4
176	87.0	0.0	175.6

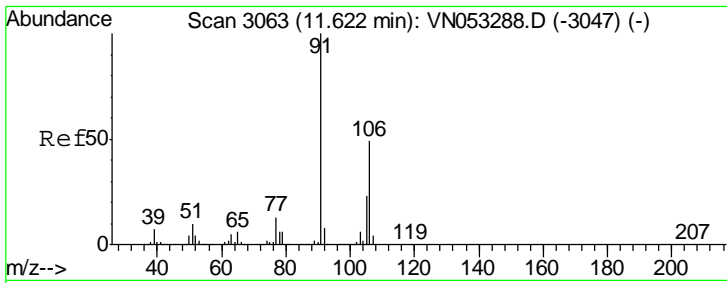


#63  
 Chlorobenzene-d5  
 Concen: 50.000 ug/l  
 RT: 11.41 min Scan# 2996  
 Delta R.T. 0.00 min  
 Lab File: VN053341.D  
 Acq: 10 Jan 2019 15:01

Tgt Ion	Resp	Lower	Upper
117	1509702		
82	53.1	42.9	64.3
119	31.6	25.6	38.4



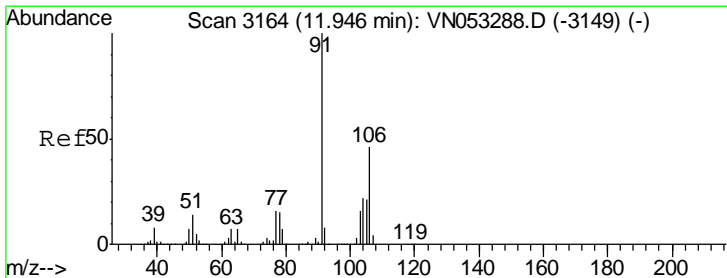
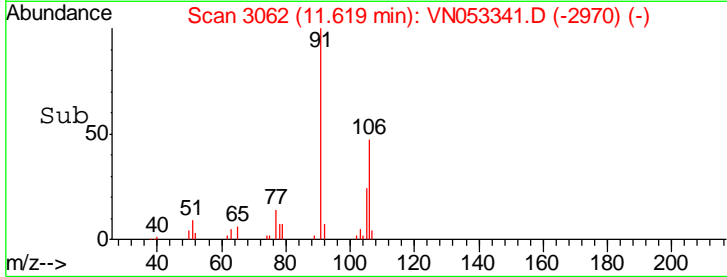
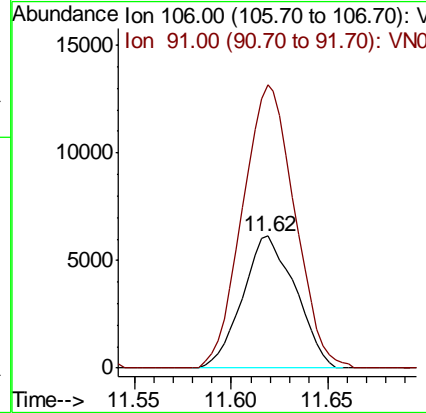
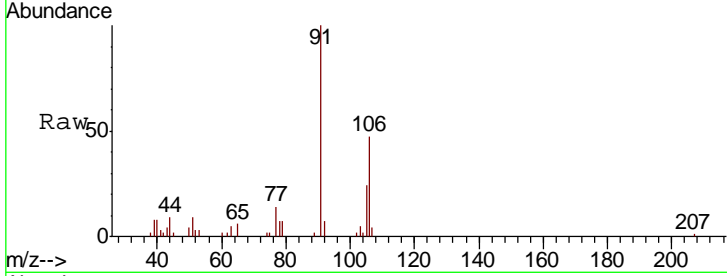




#68  
 m/p-Xylenes  
 Concen: 0.558 ug/l  
 RT: 11.62 min Scan# 3062  
 Delta R.T. -0.00 min  
 Lab File: VN053341.D  
 Acq: 10 Jan 2019 15:01

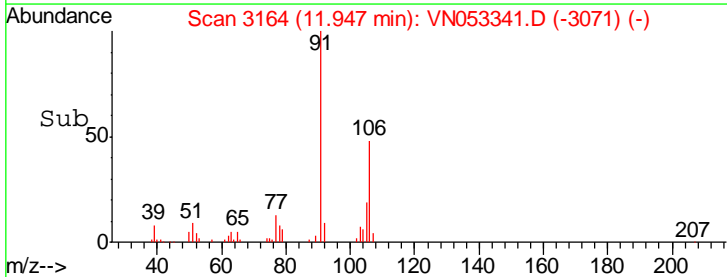
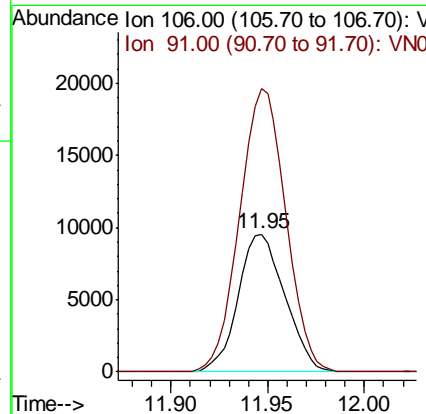
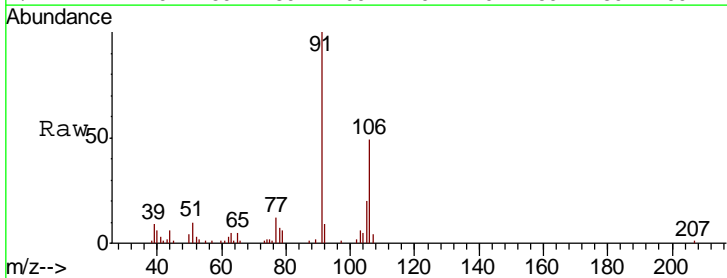
Instrument :  
 MSVOA\_N  
 ClientSampled :  
 HR-06-010918-B

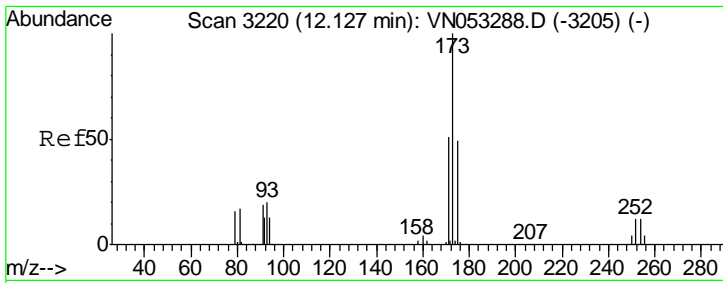
Tgt Ion:106 Resp: 11687  
 Ion Ratio Lower Upper  
 106 100  
 91 211.1 161.4 242.2



#69  
 o-Xylene  
 Concen: 0.781 ug/l  
 RT: 11.95 min Scan# 3164  
 Delta R.T. 0.00 min  
 Lab File: VN053341.D  
 Acq: 10 Jan 2019 15:01

Tgt Ion:106 Resp: 16015  
 Ion Ratio Lower Upper  
 106 100  
 91 203.1 106.8 320.4

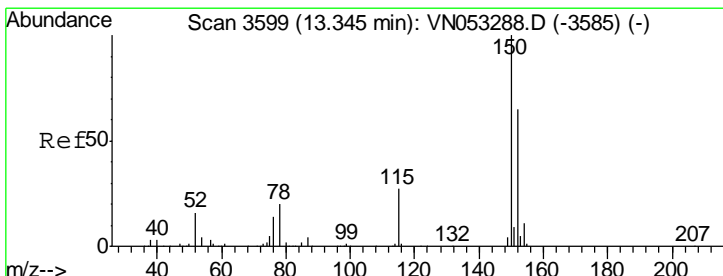
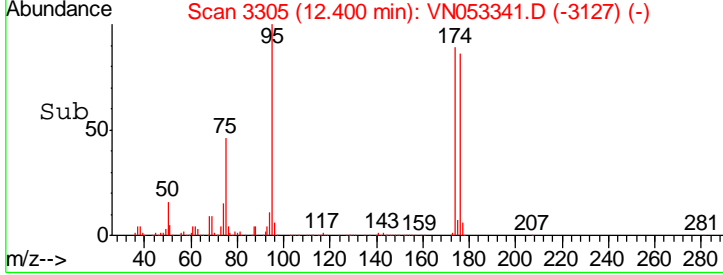
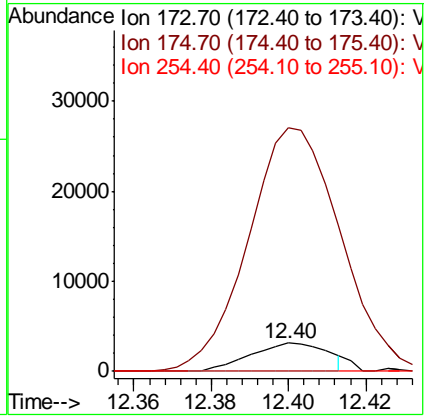
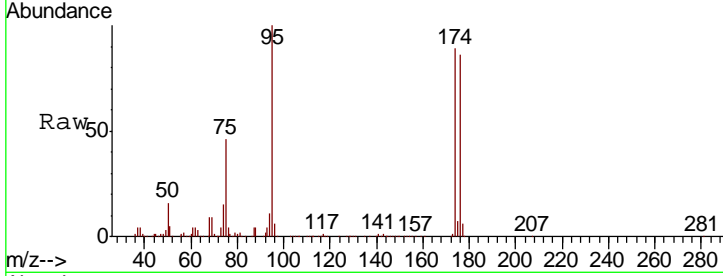




#71  
 Bromoform  
 Concen: 0.539 ug/l  
 RT: 12.40 min Scan# 3305  
 Delta R.T. 0.27 min  
 Lab File: VN053341.D  
 Acq: 10 Jan 2019 15:01

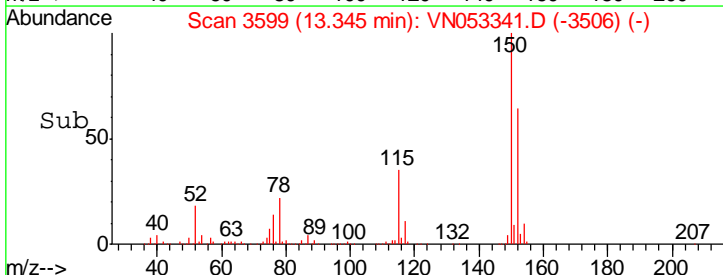
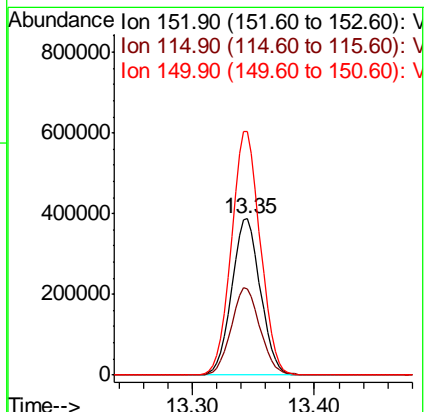
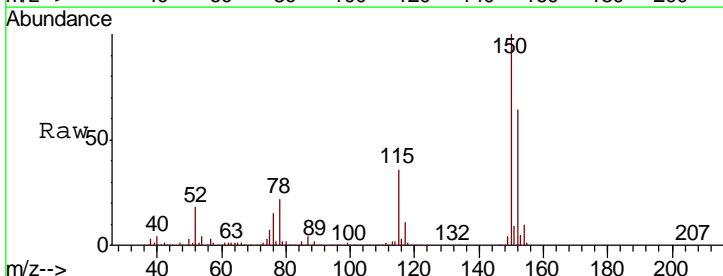
Instrument : MSVOA\_N  
 ClientSampled : HR-06-010918-B

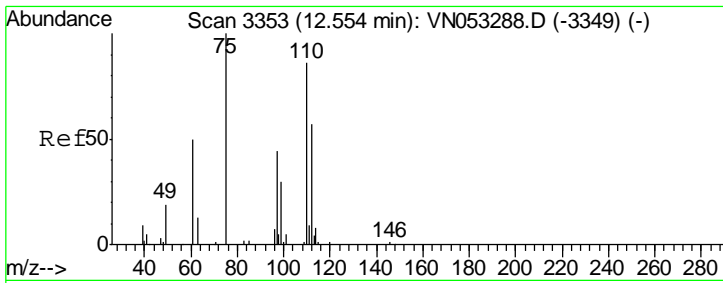
Tgt Ion	Resp	Lower	Upper
173	100		
175	900.1	24.3	72.8#
254	0.0	0.2	0.2#



#72  
 1,4-Dichlorobenzene-d4  
 Concen: 50.000 ug/l  
 RT: 13.35 min Scan# 3599  
 Delta R.T. 0.00 min  
 Lab File: VN053341.D  
 Acq: 10 Jan 2019 15:01

Tgt Ion	Resp	Lower	Upper
152	100		
115	56.5	28.0	84.0
150	156.4	0.0	346.6

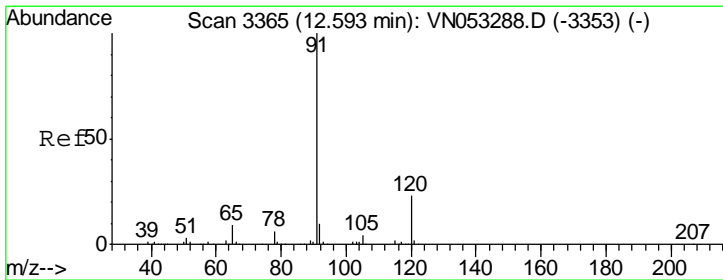
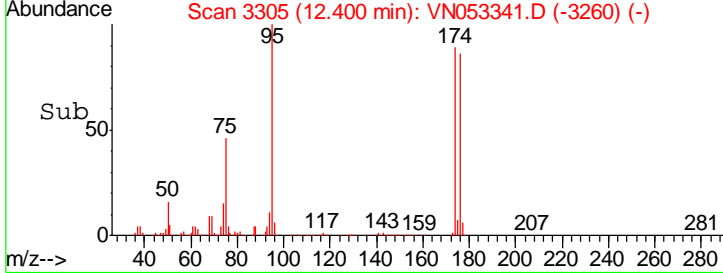
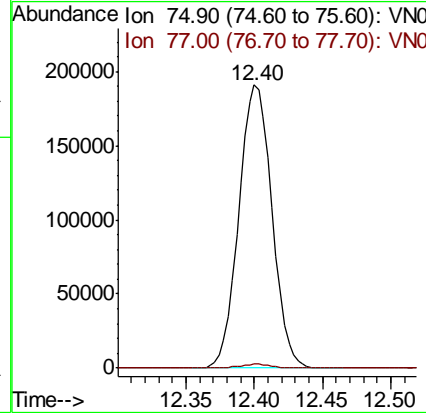
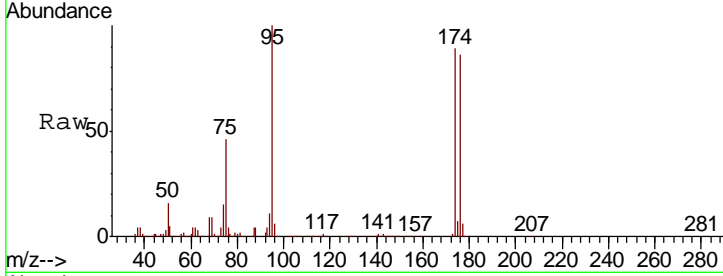




#76  
 1,2,3-Trichloropropane  
 Concen: 34.845 ug/l  
 RT: 12.40 min Scan# 3305  
 Delta R.T. -0.15 min  
 Lab File: VN053341.D  
 Acq: 10 Jan 2019 15:01

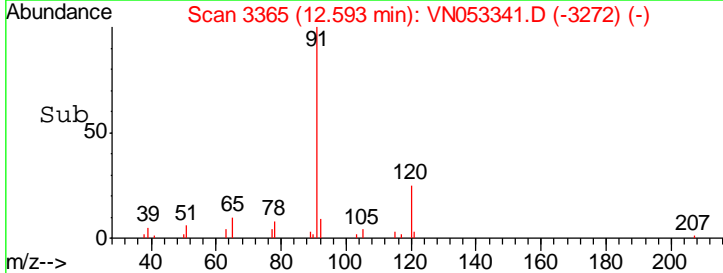
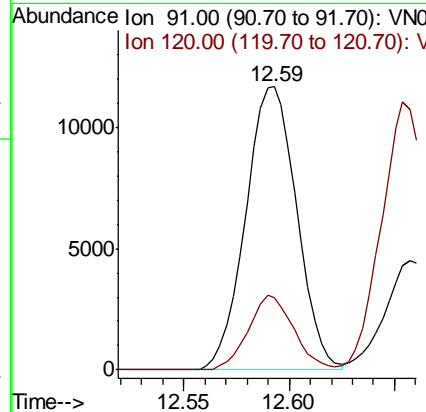
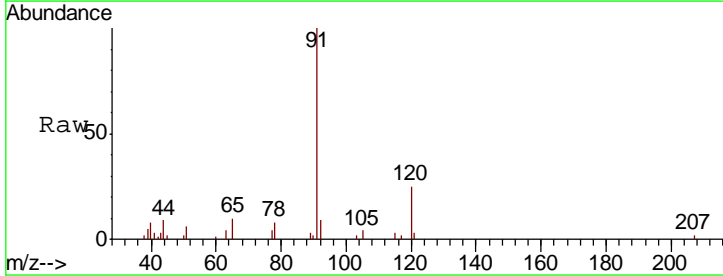
Instrument : MSVOA\_N  
 ClientSampled : HR-06-010918-B

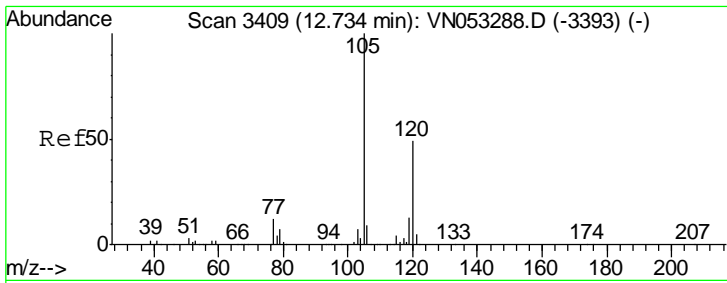
Tgt Ion: 75 Resp: 321652  
 Ion Ratio Lower Upper  
 75 100  
 77 1.4 0.0 0.0#



#78  
 n-propylbenzene  
 Concen: 0.368 ug/l  
 RT: 12.59 min Scan# 3365  
 Delta R.T. 0.00 min  
 Lab File: VN053341.D  
 Acq: 10 Jan 2019 15:01

Tgt Ion: 91 Resp: 19611  
 Ion Ratio Lower Upper  
 91 100  
 120 23.3 11.5 34.5

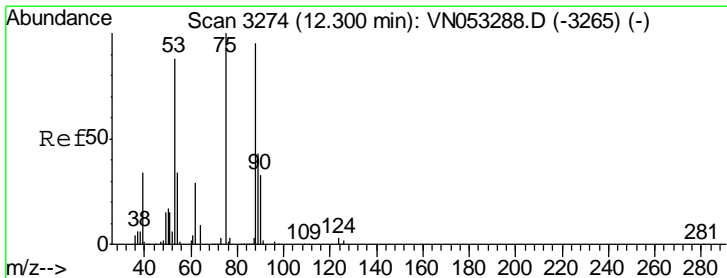
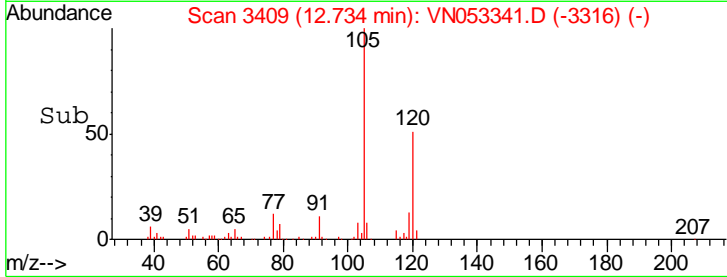
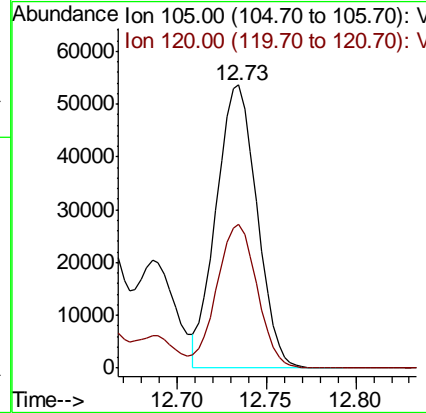
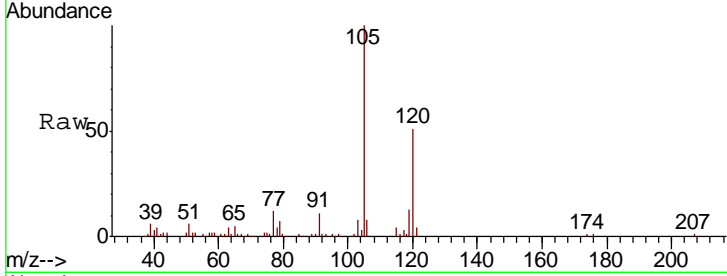




#80  
 1,3,5-Trimethylbenzene  
 Concen: 2.243 ug/l  
 RT: 12.73 min Scan# 3409  
 Delta R.T. 0.00 min  
 Lab File: VN053341.D  
 Acq: 10 Jan 2019 15:01

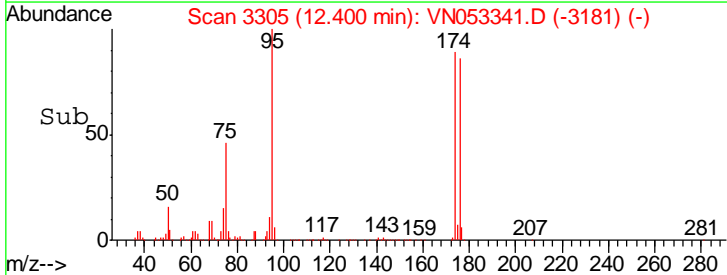
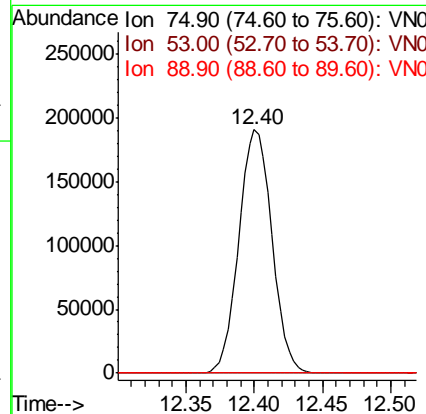
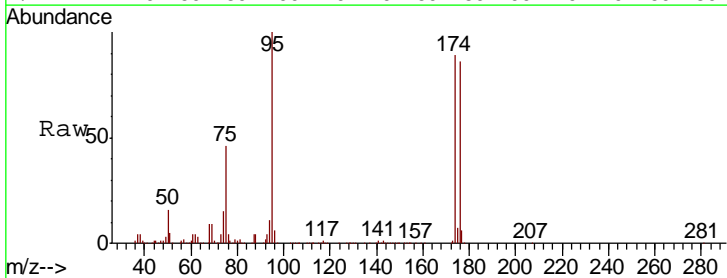
Instrument :  
 MSVOA\_N  
 ClientSampled :  
 HR-06-010918-B

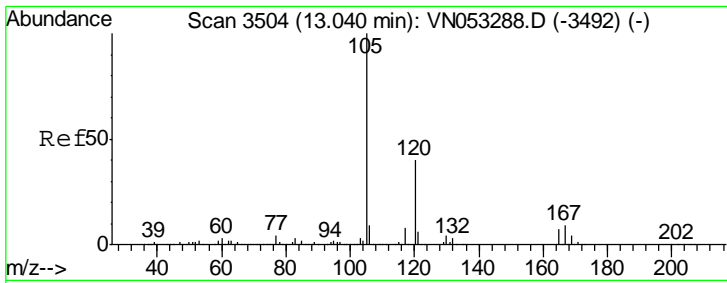
Tgt Ion: 105 Resp: 85144  
 Ion Ratio Lower Upper  
 105 100  
 120 50.3 24.7 74.1



#81  
 trans-1,4-Dichloro-2-butene  
 Concen: 102.521 ug/l  
 RT: 12.40 min Scan# 3305  
 Delta R.T. 0.10 min  
 Lab File: VN053341.D  
 Acq: 10 Jan 2019 15:01

Tgt Ion: 75 Resp: 321652  
 Ion Ratio Lower Upper  
 75 100  
 53 0.0 70.5 105.7#  
 89 0.0 35.4 53.0#

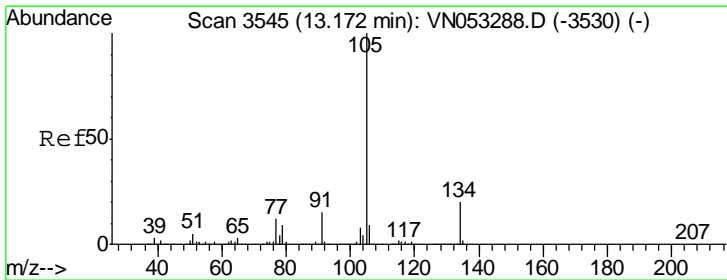
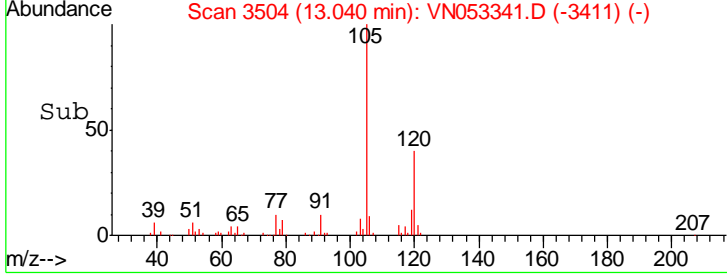
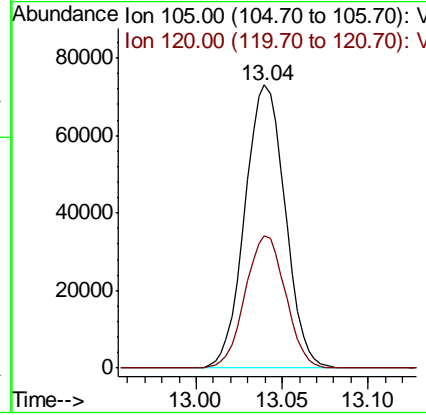
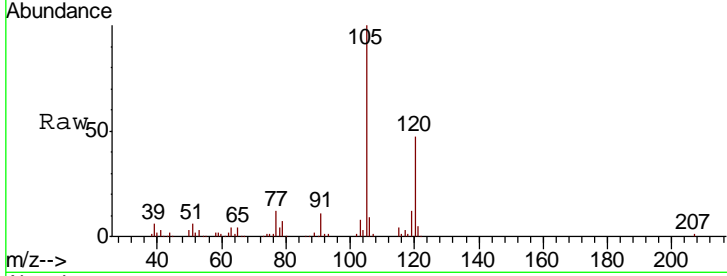




#84  
 1,2,4-Trimethylbenzene  
 Concen: 3.073 ug/l  
 RT: 13.04 min Scan# 3504  
 Delta R.T. 0.00 min  
 Lab File: VN053341.D  
 Acq: 10 Jan 2019 15:01

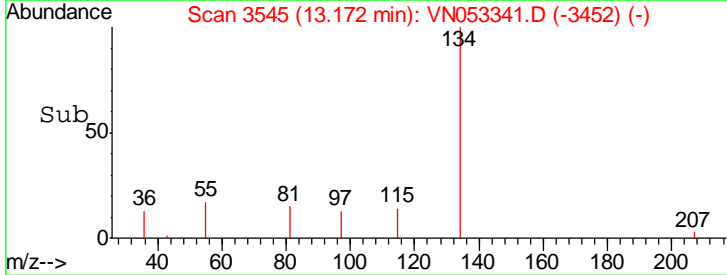
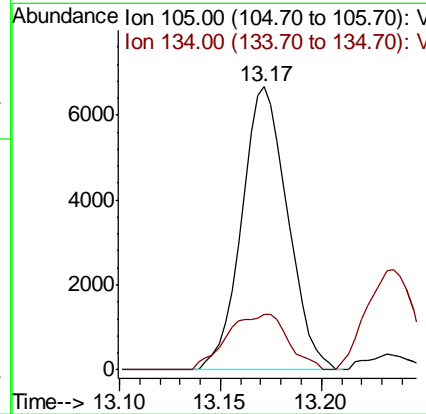
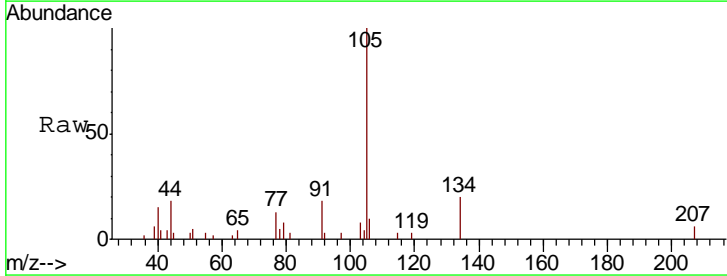
Instrument : MSVOA\_N  
 ClientSampled : HR-06-010918-B

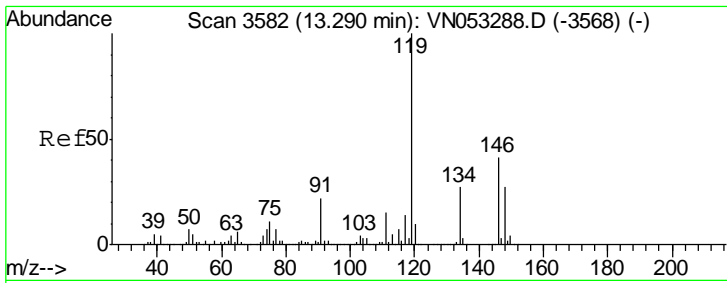
Tgt Ion:105 Resp: 118828  
 Ion Ratio Lower Upper  
 105 100  
 120 46.9 23.0 69.0



#85  
 sec-Butylbenzene  
 Concen: 0.242 ug/l  
 RT: 13.17 min Scan# 3545  
 Delta R.T. 0.00 min  
 Lab File: VN053341.D  
 Acq: 10 Jan 2019 15:01

Tgt Ion:105 Resp: 10637  
 Ion Ratio Lower Upper  
 105 100  
 134 26.0 10.2 30.6

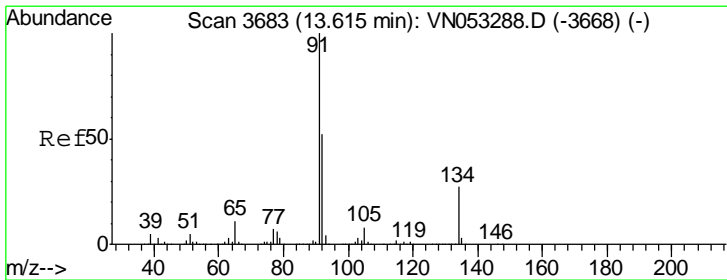
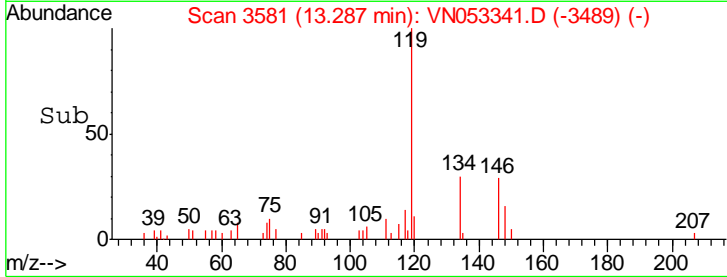
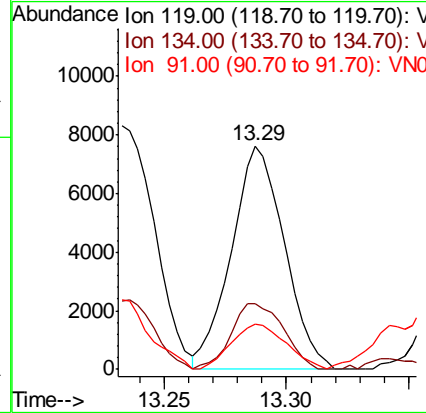
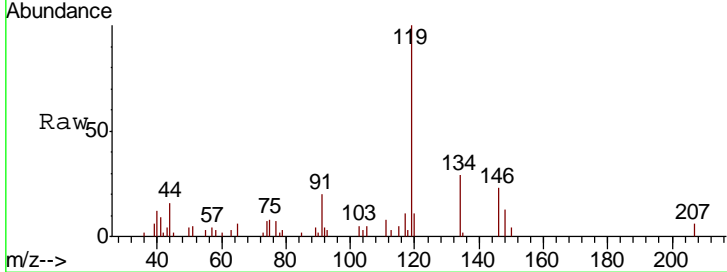




#86  
 p-Isopropyltoluene  
 Concen: 0.302 ug/l  
 RT: 13.29 min Scan# 3581  
 Delta R.T. -0.00 min  
 Lab File: VN053341.D  
 Acq: 10 Jan 2019 15:01

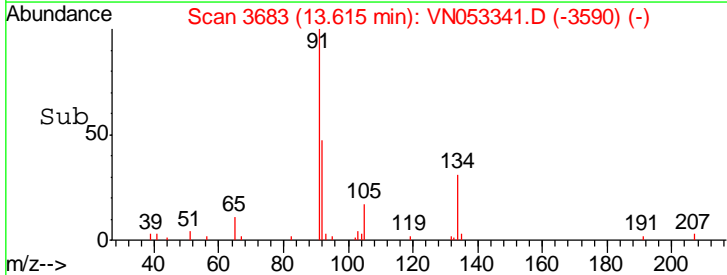
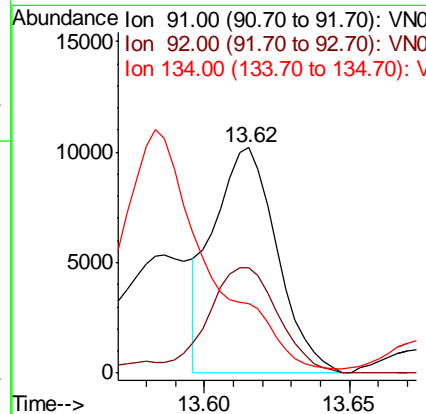
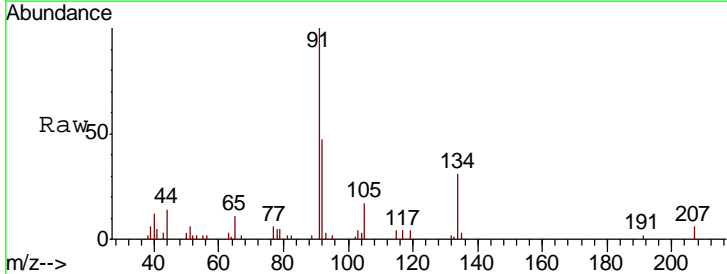
Instrument :  
 MSVOA\_N  
 ClientSampled :  
 HR-06-010918-B

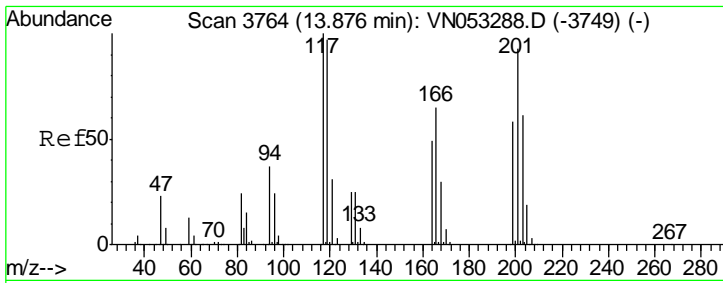
Tgt Ion	Resp	Lower	Upper
119	11497		
134	29.1	13.4	40.1
91	21.0	11.1	33.1



#89  
 n-Butylbenzene  
 Concen: 0.486 ug/l  
 RT: 13.62 min Scan# 3683  
 Delta R.T. 0.00 min  
 Lab File: VN053341.D  
 Acq: 10 Jan 2019 15:01

Tgt Ion	Resp	Lower	Upper
91	15488		
92	51.6	26.3	78.8
134	0.0	13.5	40.5#

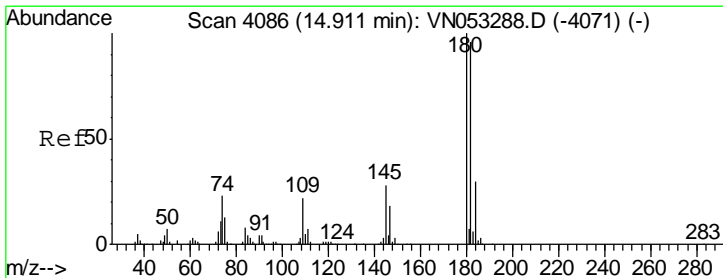
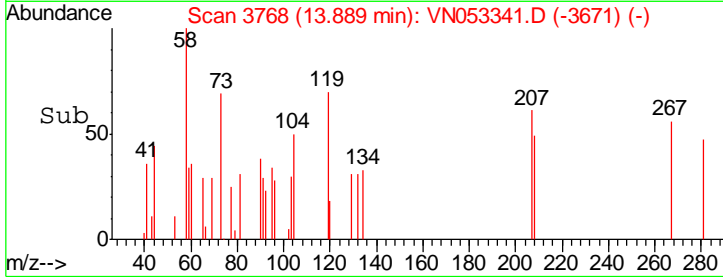
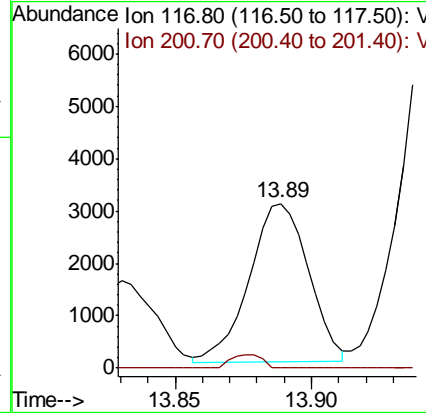
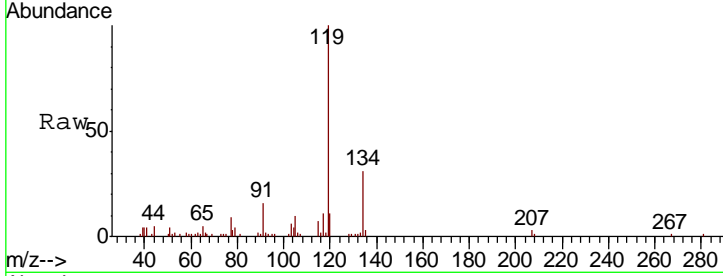




#90  
 Hexachloroethane  
 Concen: 0.744 ug/l  
 RT: 13.89 min Scan# 3768  
 Delta R.T. 0.01 min  
 Lab File: VN053341.D  
 Acq: 10 Jan 2019 15:01

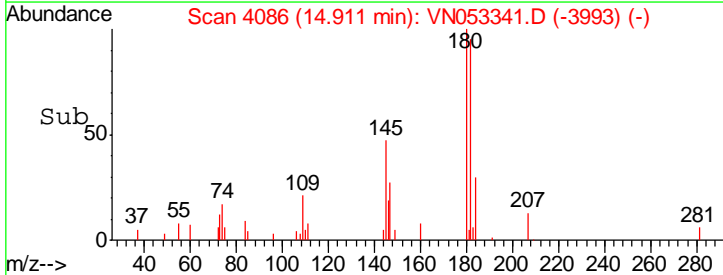
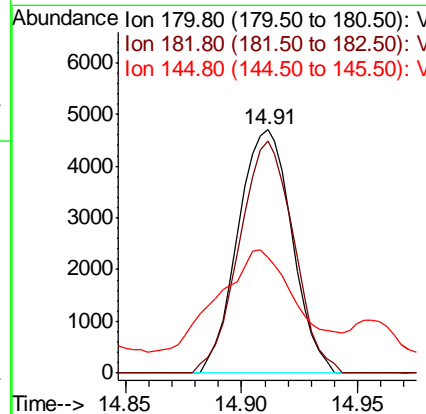
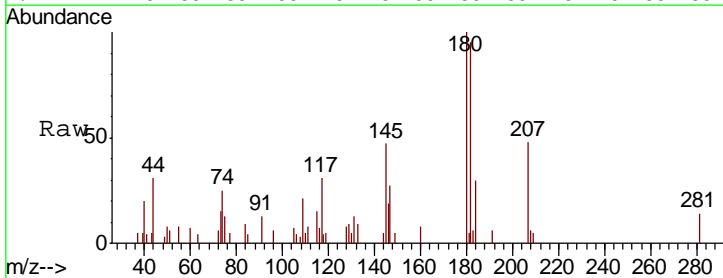
Instrument : MSVOA\_N  
 ClientSampled : HR-06-010918-B

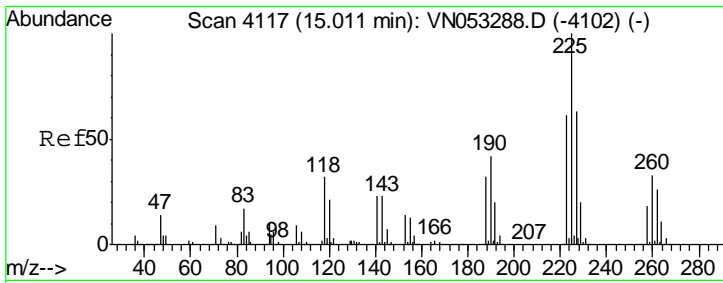
Tgt Ion:117 Resp: 4537  
 Ion Ratio Lower Upper  
 117 100  
 201 4.5 46.1 138.3#



#93  
 1,2,4-Trichlorobenzene  
 Concen: 1.164 ug/l  
 RT: 14.91 min Scan# 4086  
 Delta R.T. 0.00 min  
 Lab File: VN053341.D  
 Acq: 10 Jan 2019 15:01

Tgt Ion:180 Resp: 7594  
 Ion Ratio Lower Upper  
 180 100  
 182 96.2 47.8 143.4  
 145 76.3 14.4 43.0#

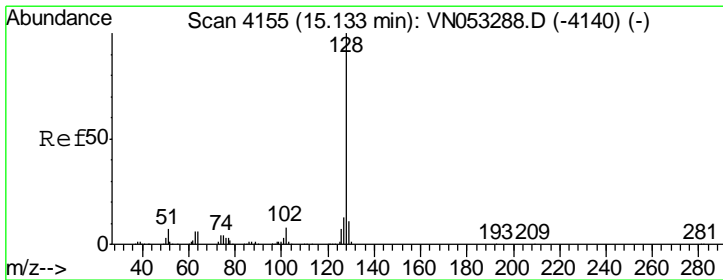
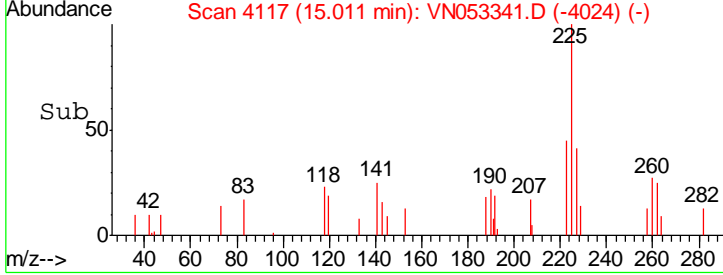
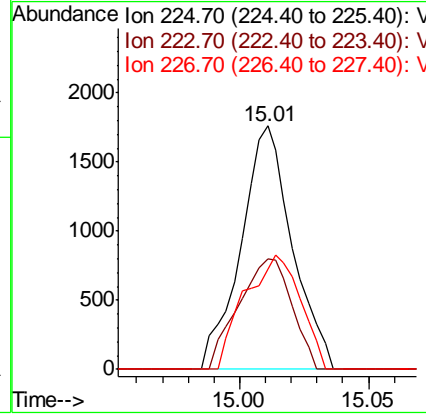
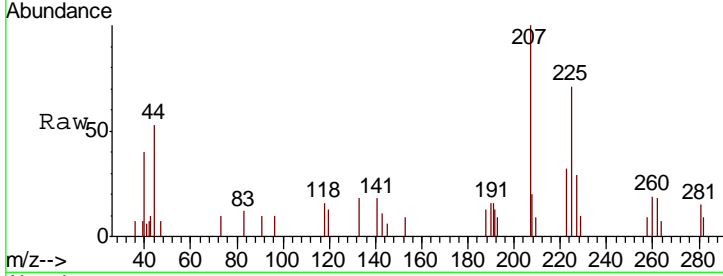




#94  
 Hexachlorobutadiene  
 Concen: 0.458 ug/l  
 RT: 15.01 min Scan# 4117  
 Delta R.T. 0.00 min  
 Lab File: VN053341.D  
 Acq: 10 Jan 2019 15:01

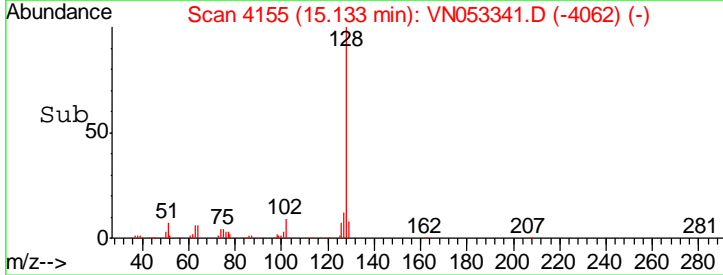
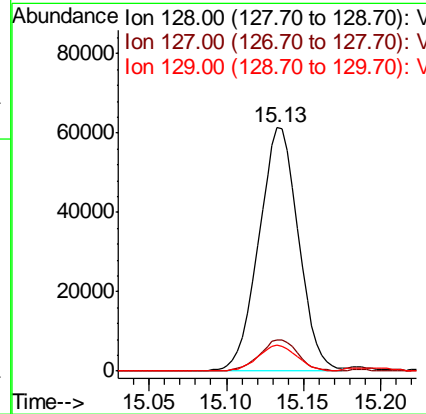
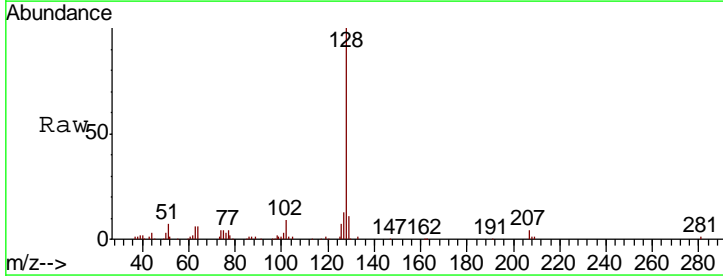
Instrument : MSVOA\_N  
 ClientSampled : HR-06-010918-B

Tgt Ion	Resp	Lower	Upper
225	100		
223	47.2	30.9	92.8
227	50.9	31.4	94.2

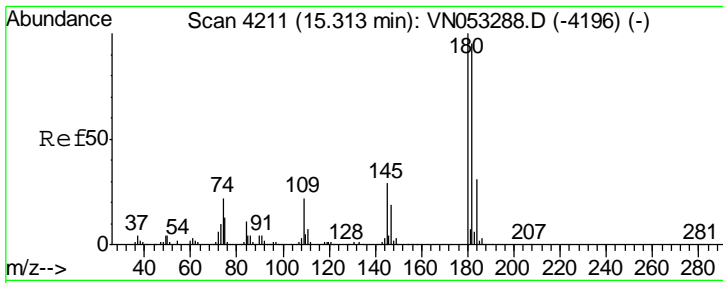


#95  
 Naphthalene  
 Concen: 9.823 ug/l  
 RT: 15.13 min Scan# 4155  
 Delta R.T. 0.00 min  
 Lab File: VN053341.D  
 Acq: 10 Jan 2019 15:01

Tgt Ion	Resp	Lower	Upper
128	100		
127	12.5	10.4	15.6
129	10.7	8.7	13.1







#96  
 1,2,3-Trichlorobenzene  
 Concen: 1.851 ug/l  
 RT: 15.31 min Scan# 4211  
 Delta R.T. 0.00 min  
 Lab File: VN053341.D  
 Acq: 10 Jan 2019 15:01

Instrument : MSVOA\_N  
 ClientSampled : HR-06-010918-B

Tgt Ion	Resp	Lower	Upper
180	100		
182	96.3	48.4	145.0
145	75.4	14.9	44.5#

