

Data Path : Z:\VOASRV\HPCHEM1\MSVOA_N\DATA\VN011019\
 Data File : VN053343.D
 Acq On : 10 Jan 2019 15:54
 Operator : MD\SY
 Sample : K1100-04
 Misc : 5.00mL/MSVOA_N/WATER
 ALS Vial : 16 Sample Multiplier: 28

Instrument :
 MSVOA_N
 ClientSampleId :
 SOIL-DRUM-B

Quant Time: Jan 11 05:47:19 2019
 Quant Method : Z:\VOASRV\HPCHEM1\MSVOA_N\METHODS\82N010519W.M
 Quant Title : SW846 8260
 QLast Update : Mon Jan 07 09:34:27 2019
 Response via : Initial Calibration

Internal Standards	R.T.	QIon	Response	Conc	Units	Dev(Min)
1) Pentafluorobenzene	7.66	168	1016529	50.00	ug/l	0.00
34) 1,4-Difluorobenzene	8.59	114	1575685	50.00	ug/l	0.00
63) Chlorobenzene-d5	11.41	117	1444805	50.00	ug/l	0.00
72) 1,4-Dichlorobenzene-d4	13.35	152	605134	50.00	ug/l	0.00

System Monitoring Compounds

33) 1,2-Dichloroethane-d4	8.03	65	512114	48.42	ug/l	0.00
Spiked Amount	50.000		Recovery	=	96.84%	
35) Dibromofluoromethane	7.59	113	449546	50.12	ug/l	0.00
Spiked Amount	50.000		Recovery	=	100.24%	
50) Toluene-d8	10.09	98	1940225	50.14	ug/l	0.00
Spiked Amount	50.000		Recovery	=	100.28%	
62) 4-Bromofluorobenzene	12.40	95	648156	47.85	ug/l	0.00
Spiked Amount	50.000		Recovery	=	95.70%	

Target Compounds

						Qvalue
13) Acrolein	3.61	56	447	0.559	ug/l #	31
16) Acetone	3.82	43	18523	5.088	ug/l	97
18) Methyl Acetate	4.33	43	3071	0.321	ug/l #	72
20) Methylene Chloride	4.55	84	29916	2.634	ug/l	96
25) 2-Butanone	6.84	43	3577	0.824	ug/l	98
29) Tetrahydrofuran	7.22	42	2086	0.729	ug/l #	47
30) Chloroform	7.37	83	5864	0.314	ug/l	94
31) Cyclohexane	7.66	56	16793	0.739	ug/l #	1
36) 1,1-Dichloropropene	7.66	75	65714	4.467	ug/l #	48
37) Ethyl Acetate	6.84	43	3577	0.373	ug/l #	79
38) Carbon Tetrachloride	7.66	117	87824	6.468	ug/l #	16
43) Isopropyl Acetate	8.17	43	42284	2.243	ug/l #	79
48) Methyl methacrylate	9.18	41	11234	1.312	ug/l #	23
49) 1,4-Dioxane	9.20	88	1186	12.999	ug/l #	1
51) 4-Methyl-2-Pentanone	9.99	43	5240	0.553	ug/l	94
52) Toluene	10.16	92	7934	0.288	ug/l	95
54) cis-1,3-Dichloropropene	9.90	75	75562	4.464	ug/l #	63
57) 1,3-Dichloropropane	10.76	76	17396	1.026	ug/l #	42
59) 2-Hexanone	10.76	43	217996	33.566	ug/l #	50
67) Ethyl Benzene	11.51	91	37412	0.701	ug/l	93
68) m/p-Xylenes	11.62	106	69160	3.449	ug/l	97
69) o-Xylene	11.95	106	32999	1.681	ug/l	99
71) Bromoform	12.40	173	3994	0.515	ug/l #	1
76) 1,2,3-Trichloropropane	12.40	75	302621	34.287	ug/l #	100
80) 1,3,5-Trimethylbenzene	12.73	105	27076	0.746	ug/l	95
81) trans-1,4-Dichloro-2-buten	12.40	75	302621	100.877	ug/l #	14
84) 1,2,4-Trimethylbenzene	13.04	105	106023	2.868	ug/l	100
89) n-Butylbenzene	13.62	91	6141	0.201	ug/l	99
93) 1,2,4-Trichlorobenzene	14.91	180	6917	1.109	ug/l	94
94) Hexachlorobutadiene	15.01	225	1828	0.358	ug/l	85
95) Naphthalene	15.13	128	35851	3.370	ug/l	99
96) 1,2,3-Trichlorobenzene	15.32	180	6984	1.710	ug/l	96

Data Path : Z:\VOASRV\HPCHEM1\MSVOA_N\DATA\VN011019\
Data File : VN053343.D
Acq On : 10 Jan 2019 15:54
Operator : MD\SY
Sample : K1100-04
Misc : 5.00mL/MSVOA_N/WATER
ALS Vial : 16 Sample Multiplier: 28

Instrument :
MSVOA_N
ClientSampleId :
SOIL-DRUM-B

Quant Time: Jan 11 05:47:19 2019
Quant Method : Z:\VOASRV\HPCHEM1\MSVOA_N\METHODS\82N010519W.M
Quant Title : SW846 8260
QLast Update : Mon Jan 07 09:34:27 2019
Response via : Initial Calibration

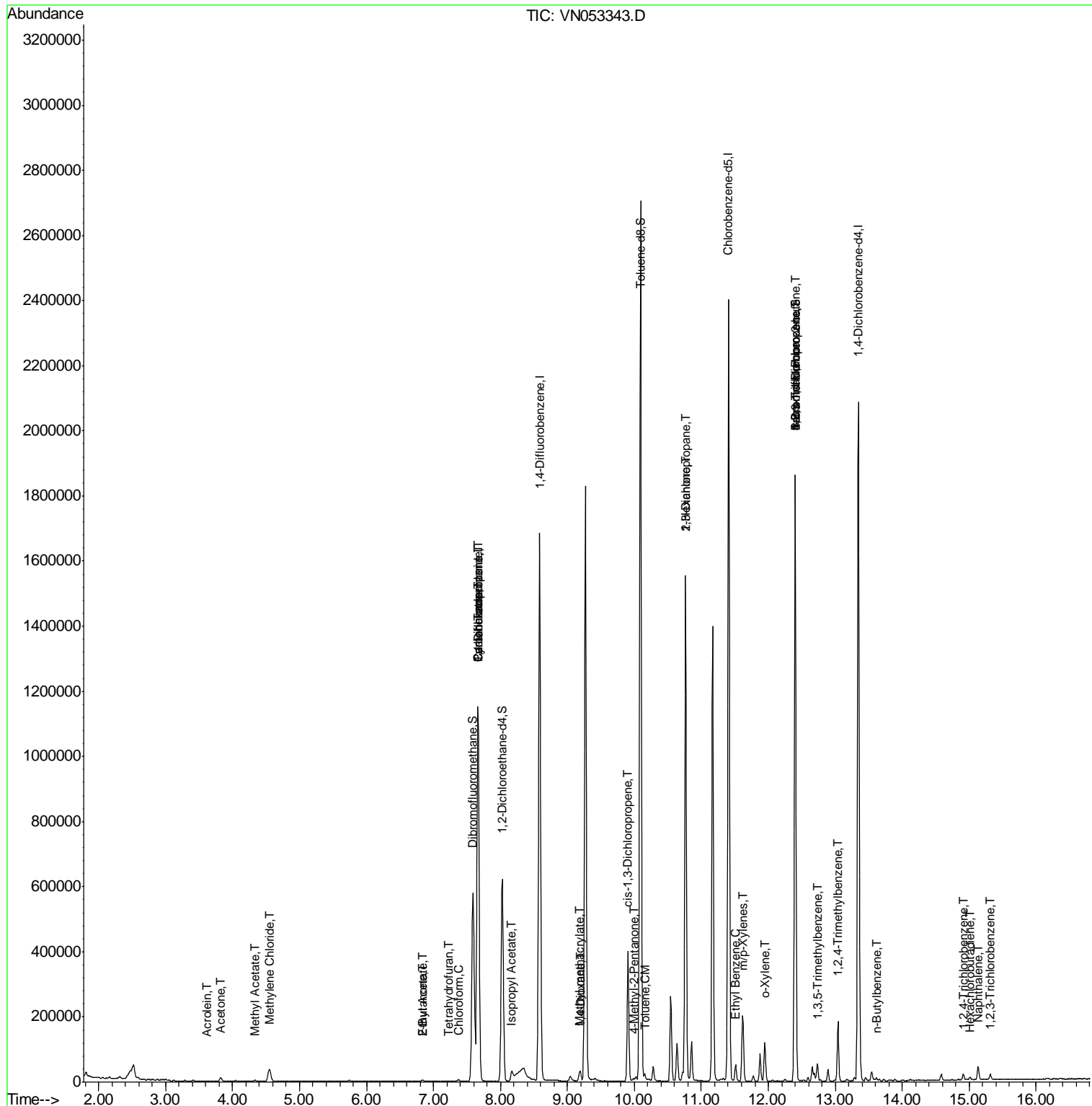
Internal Standards	R.T.	QIon	Response	Conc	Units	Dev(Min)

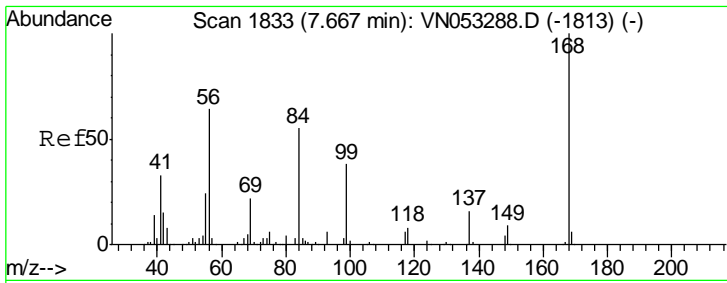
(#) = qualifier out of range (m) = manual integration (+) = signals summed						

Data Path : Z:\VOASRV\HPCHEM1\MSVOA_N\DATA\VN011019\
 Data File : VN053343.D
 Acq On : 10 Jan 2019 15:54
 Operator : MD\SY
 Sample : K1100-04
 Misc : 5.00mL/MSVOA_N/WATER
 ALS Vial : 16 Sample Multiplier: 28

Instrument :
 MSVOA_N
 Client Sampled :
 SOIL-DRUM-B

Quant Time: Jan 11 05:47:19 2019
 Quant Method : Z:\VOASRV\HPCHEM1\MSVOA_N\METHODS\82N010519W.M
 Quant Title : SW846 8260
 QLast Update : Mon Jan 07 09:34:27 2019
 Response via : Initial Calibration

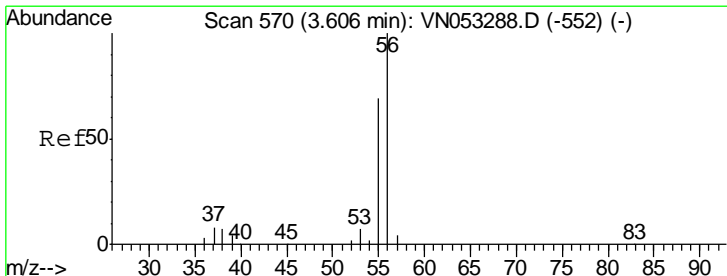
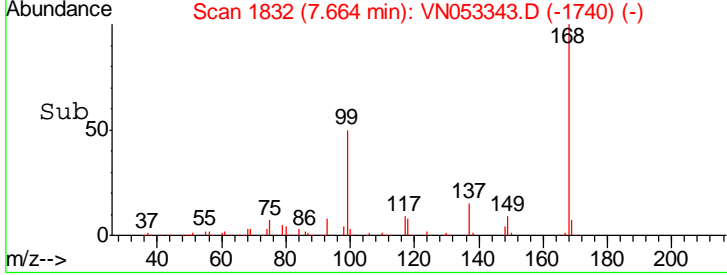
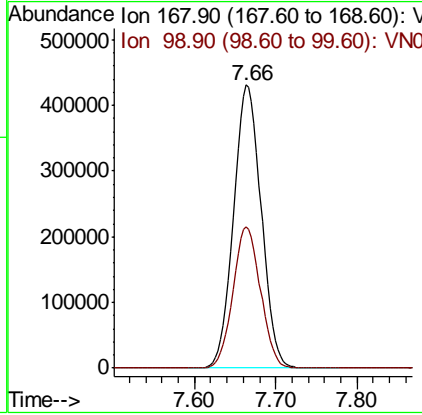
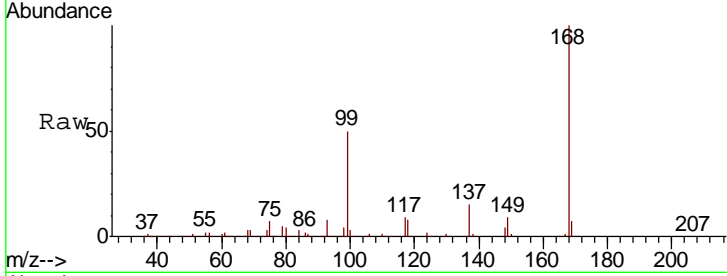




#1
 Pentafluorobenzene
 Concen: 50.000 ug/l
 RT: 7.66 min Scan# 1832
 Delta R.T. -0.00 min
 Lab File: VN053343.D
 Acq: 10 Jan 2019 15:54

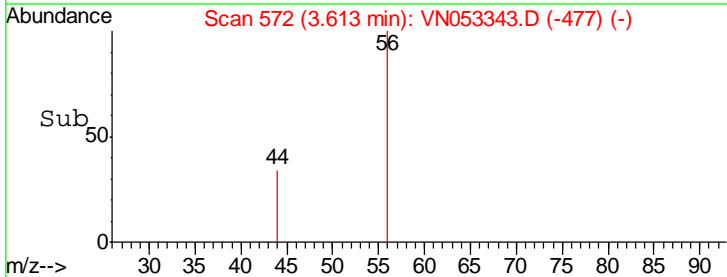
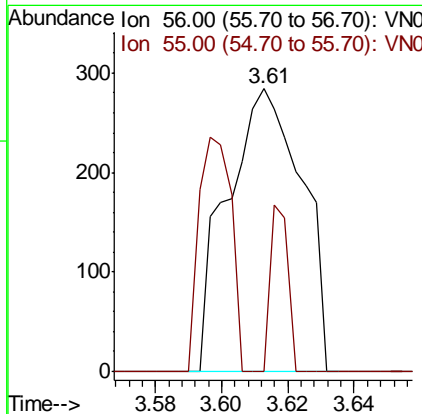
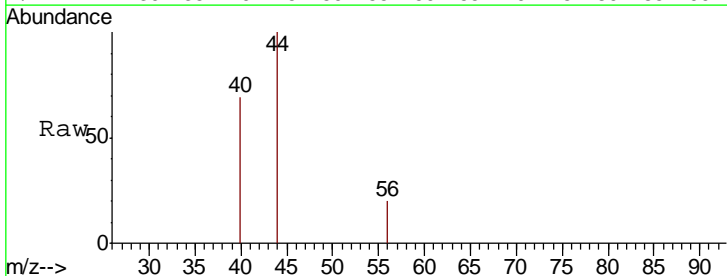
Instrument : MSVOA_N
 ClientSampled : SOIL-DRUM-B

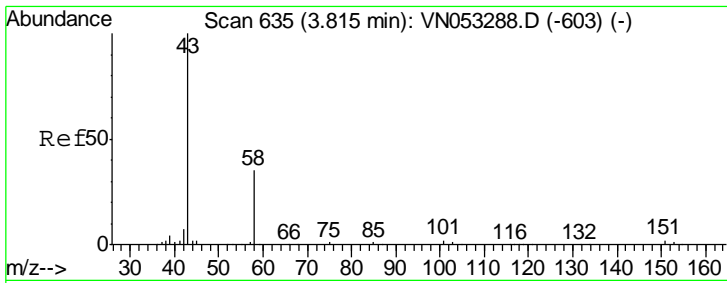
Tgt Ion: 168 Resp: 1016529
 Ion Ratio Lower Upper
 168 100
 99 50.0 39.1 58.7



#13
 Acrolein
 Concen: 0.559 ug/l
 RT: 3.61 min Scan# 572
 Delta R.T. 0.01 min
 Lab File: VN053343.D
 Acq: 10 Jan 2019 15:54

Tgt Ion: 56 Resp: 447
 Ion Ratio Lower Upper
 56 100
 55 13.9 56.3 84.5#

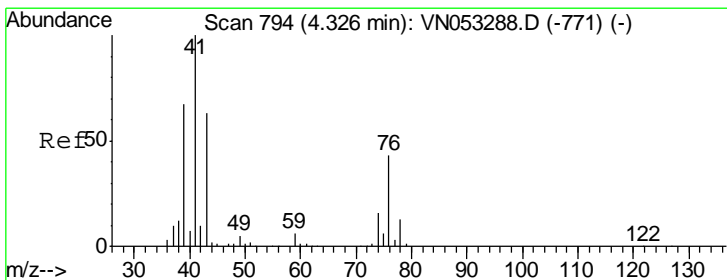
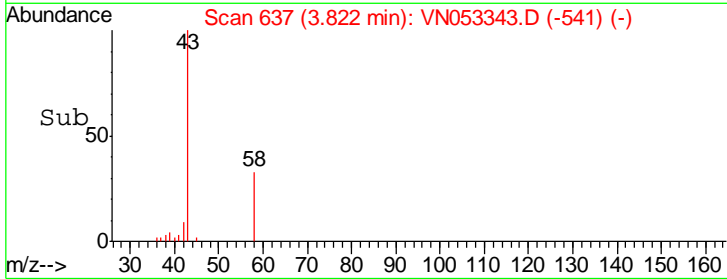
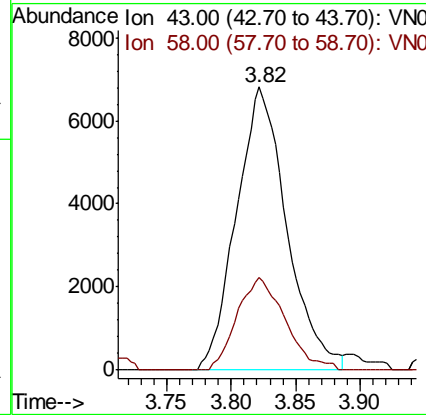
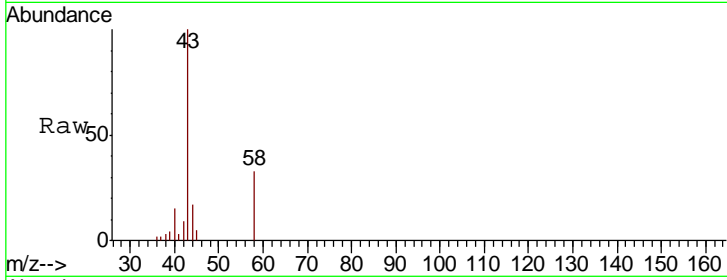




#16
 Acetone
 Concen: 5.088 ug/l
 RT: 3.82 min Scan# 637
 Delta R.T. 0.01 min
 Lab File: VN053343.D
 Acq: 10 Jan 2019 15:54

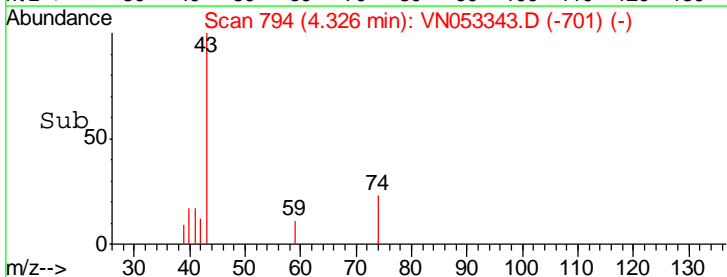
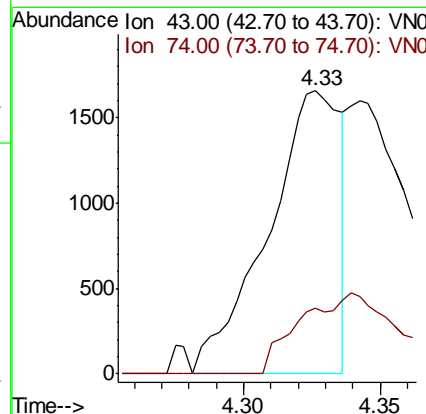
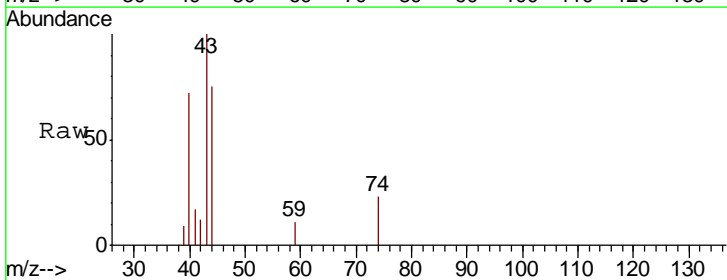
Instrument :
 MSVOA_N
 ClientSampled :
 SOIL-DRUM-B

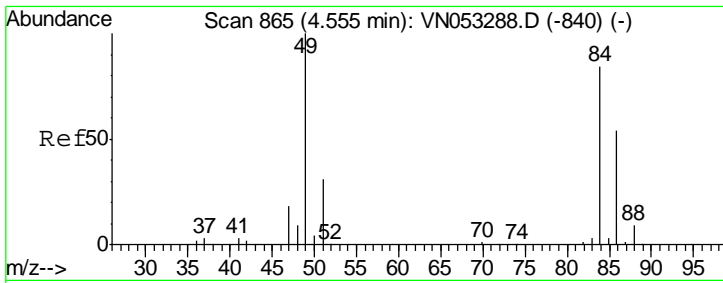
Tgt Ion: 43 Resp: 18523
 Ion Ratio Lower Upper
 43 100
 58 32.7 27.8 41.6



#18
 Methyl Acetate
 Concen: 0.321 ug/l
 RT: 4.33 min Scan# 794
 Delta R.T. 0.00 min
 Lab File: VN053343.D
 Acq: 10 Jan 2019 15:54

Tgt Ion: 43 Resp: 3071
 Ion Ratio Lower Upper
 43 100
 74 38.9 19.8 29.8#

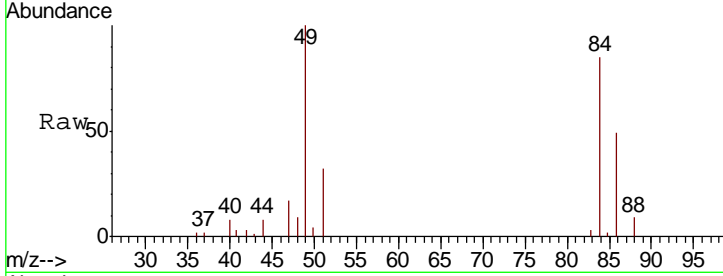




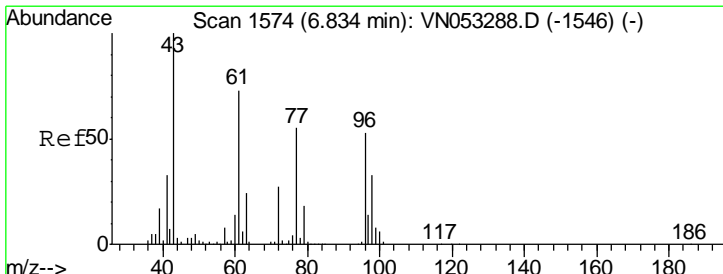
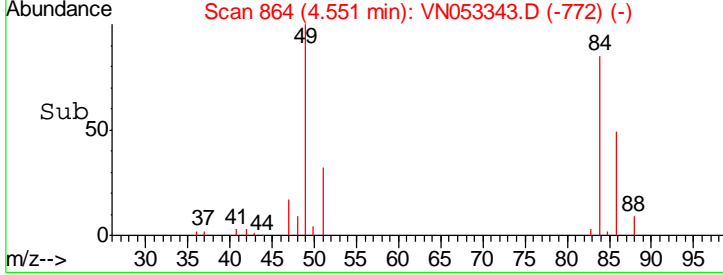
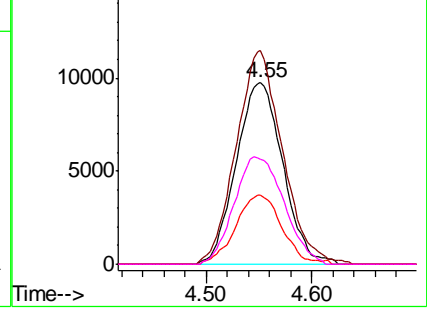
#20
 Methylene Chloride
 Concen: 2.634 ug/l
 RT: 4.55 min Scan# 864
 Delta R.T. -0.00 min
 Lab File: VN053343.D
 Acq: 10 Jan 2019 15:54

Instrument :
 MSVOA_N
 ClientSampled :
 SOIL-DRUM-B

Tgt Ion	Resp	Lower	Upper
84	100		
49	117.5	95.3	142.9
51	38.1	29.0	43.6
86	57.7	51.7	77.5

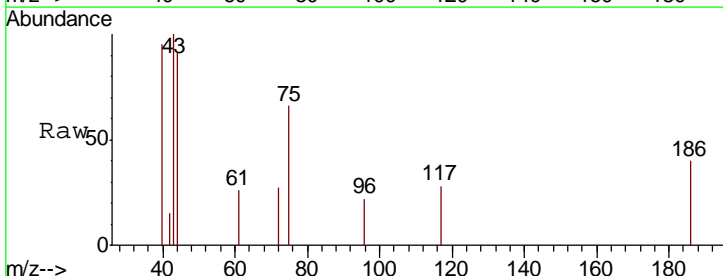


Abundance Ion 83.90 (83.60 to 84.60): VNC
 Ion 48.90 (48.60 to 49.60): VNC
 Ion 50.90 (50.60 to 51.60): VNC
 Ion 85.90 (85.60 to 86.60): VNC

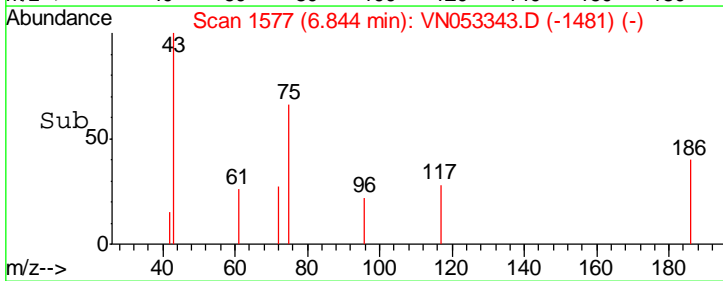
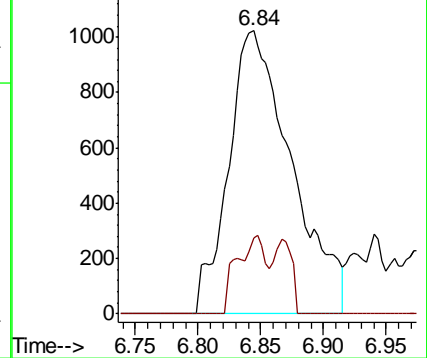


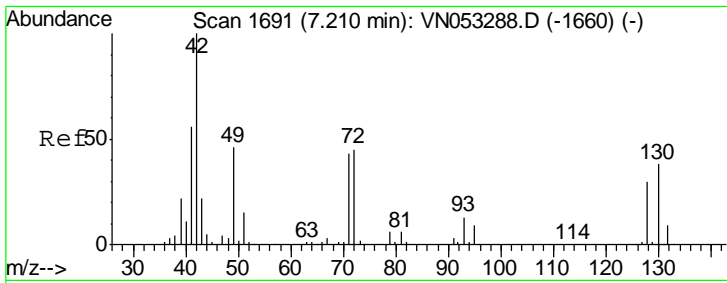
#25
 2-Butanone
 Concen: 0.824 ug/l
 RT: 6.84 min Scan# 1577
 Delta R.T. 0.01 min
 Lab File: VN053343.D
 Acq: 10 Jan 2019 15:54

Tgt Ion	Resp	Lower	Upper
43	100		
72	26.7	22.0	33.0



Abundance Ion 43.00 (42.70 to 43.70): VNC
 Ion 72.00 (71.70 to 72.70): VNC

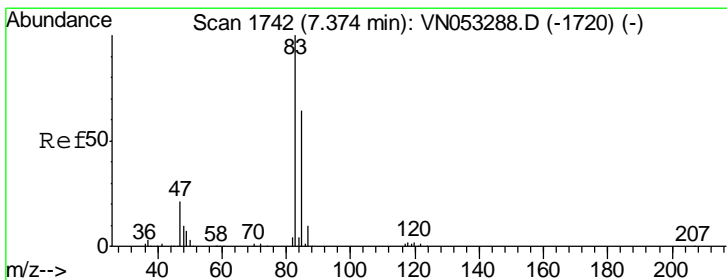
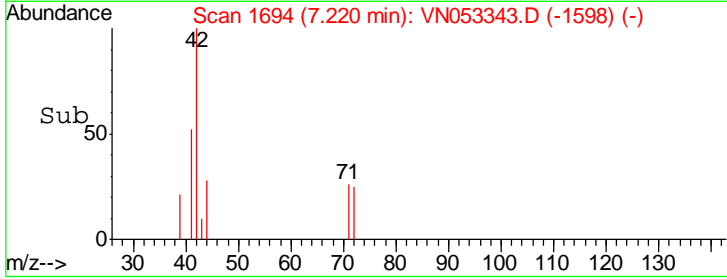
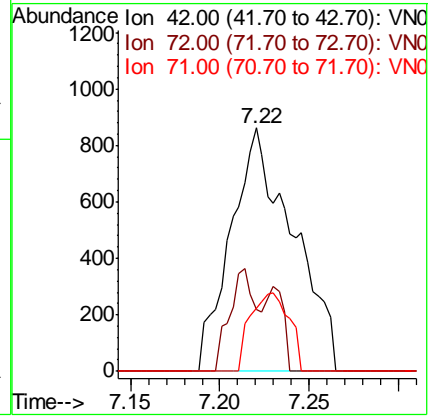
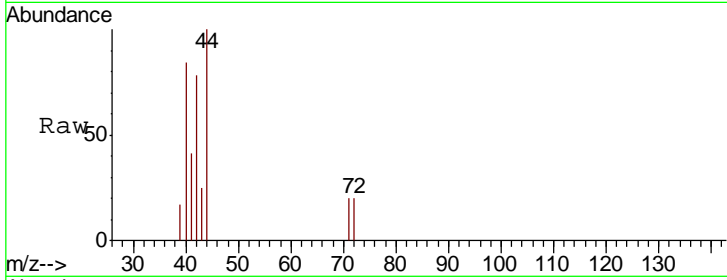




#29
 Tetrahydrofuran
 Concen: 0.729 ug/l
 RT: 7.22 min Scan# 1694
 Delta R.T. 0.01 min
 Lab File: VN053343.D
 Acq: 10 Jan 2019 15:54

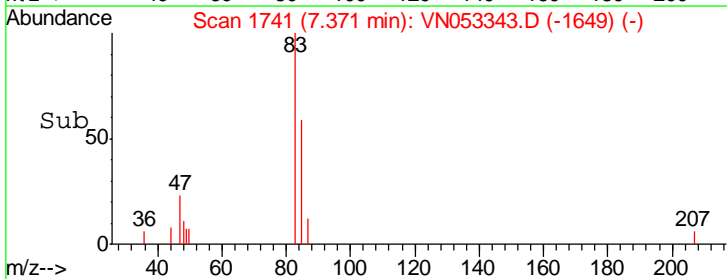
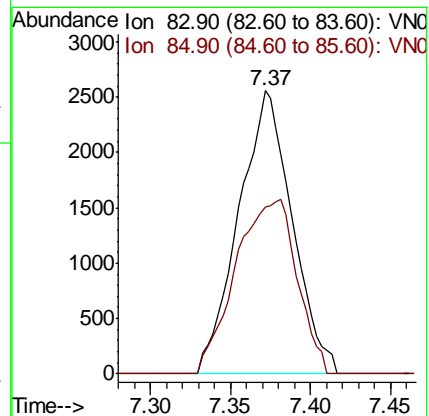
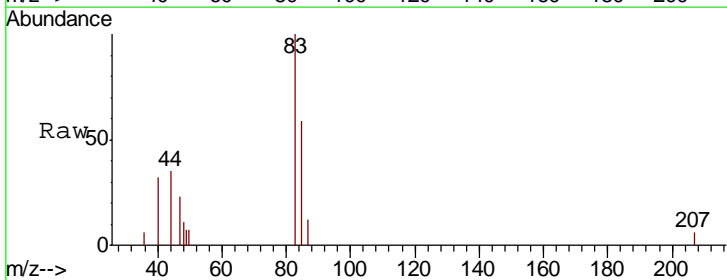
Instrument :
 MSVOA_N
 ClientSampled :
 SOIL-DRUM-B

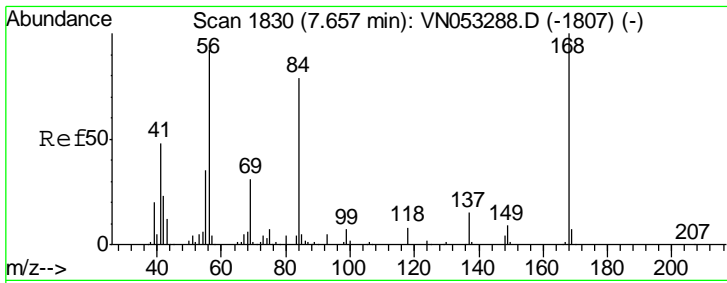
Tgt Ion	Resp	Lower	Upper
42	100		
72	18.3	35.6	53.4#
71	0.0	33.8	50.8#



#30
 Chloroform
 Concen: 0.314 ug/l
 RT: 7.37 min Scan# 1741
 Delta R.T. -0.00 min
 Lab File: VN053343.D
 Acq: 10 Jan 2019 15:54

Tgt Ion	Resp	Lower	Upper
83	100		
85	59.2	51.3	76.9

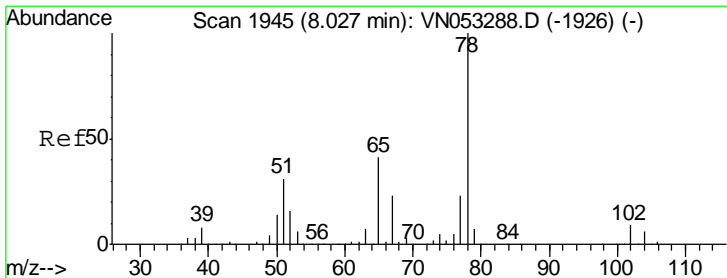
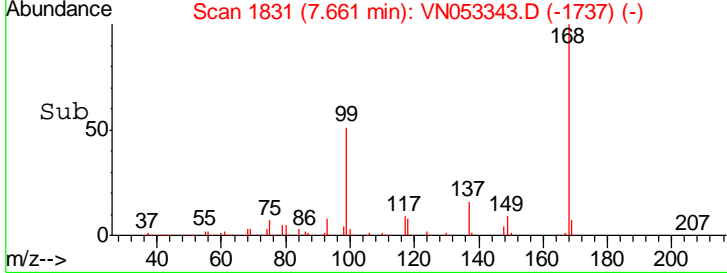
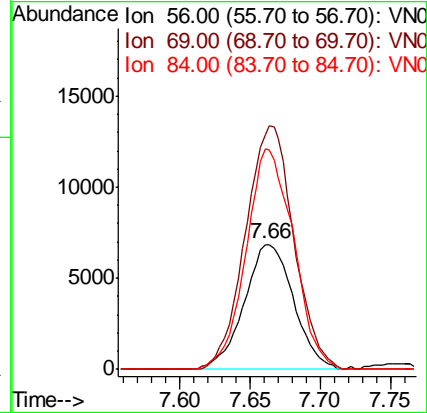
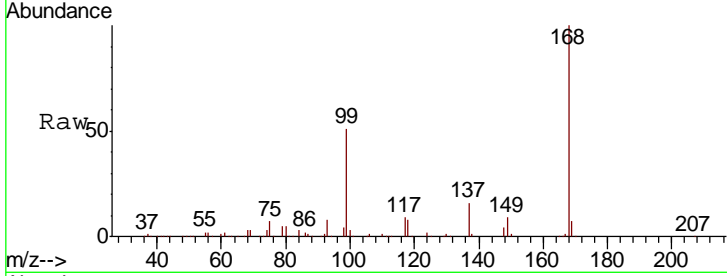




#31
 Cyclohexane
 Concen: 0.739 ug/l
 RT: 7.66 min Scan# 1831
 Delta R.T. 0.00 min
 Lab File: VN053343.D
 Acq: 10 Jan 2019 15:54

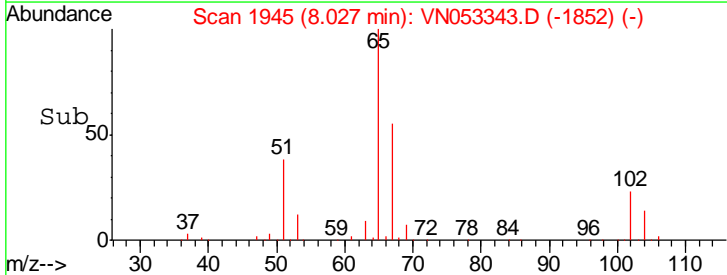
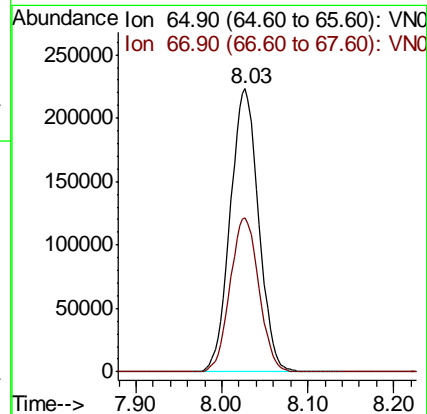
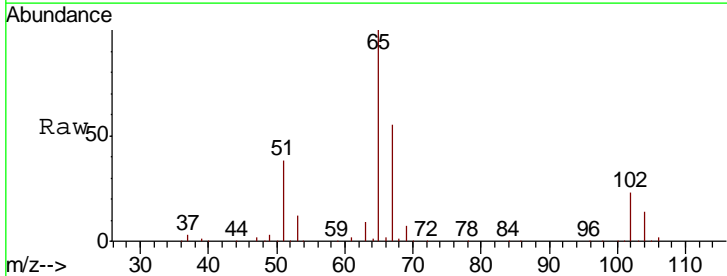
Instrument :
 MSVOA_N
 ClientSampled :
 SOIL-DRUM-B

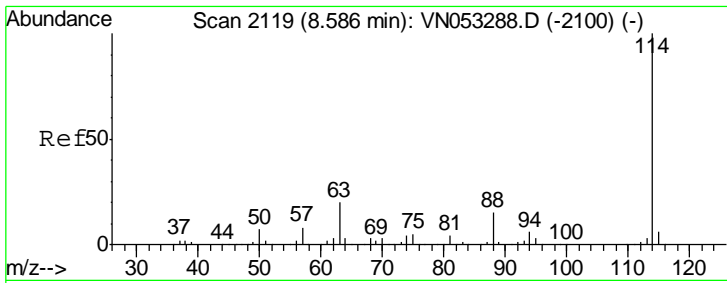
Tgt Ion	Resp	Lower	Upper
56	16793		
69	187.9	26.7	40.1#
84	176.0	68.2	102.4#



#33
 1,2-Dichloroethane-d4
 Concen: Below ug/l
 RT: 8.03 min Scan# 1945
 Delta R.T. 0.00 min
 Lab File: VN053343.D
 Acq: 10 Jan 2019 15:54

Tgt Ion	Resp	Lower	Upper
65	512114		
67	55.4	0.0	111.0

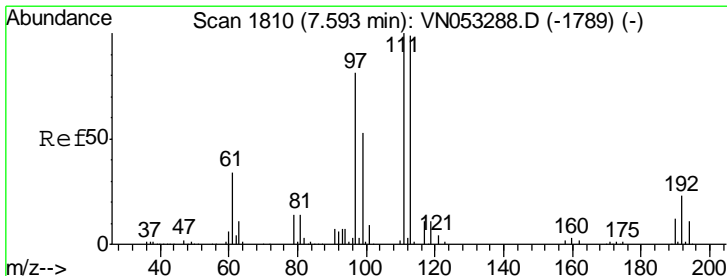
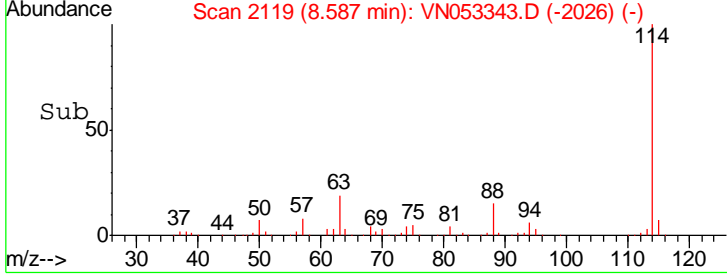
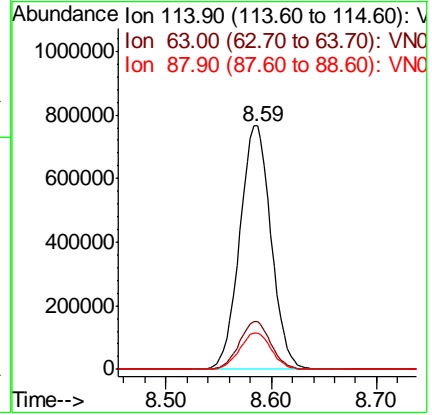
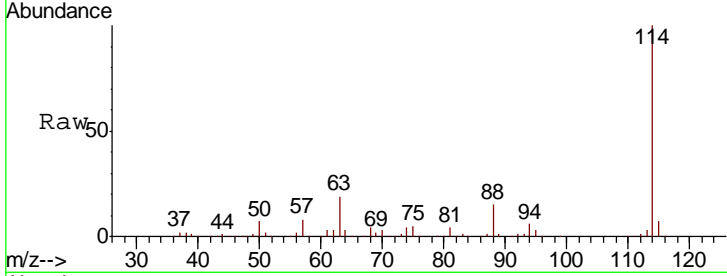




#34
 1,4-Difluorobenzene
 Concen: 50.000 ug/l
 RT: 8.59 min Scan# 2119
 Delta R.T. 0.00 min
 Lab File: VN053343.D
 Acq: 10 Jan 2019 15:54

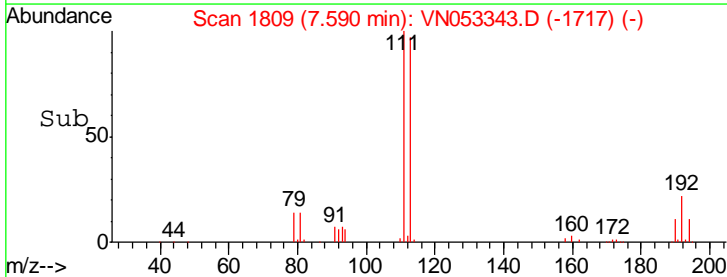
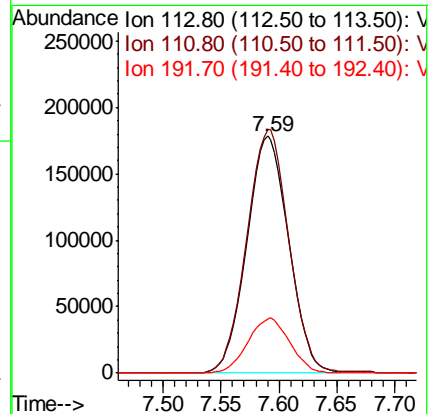
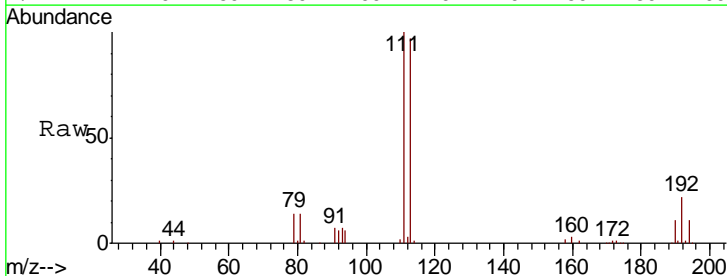
Instrument :
 MSVOA_N
 ClientSampled :
 SOIL-DRUM-B

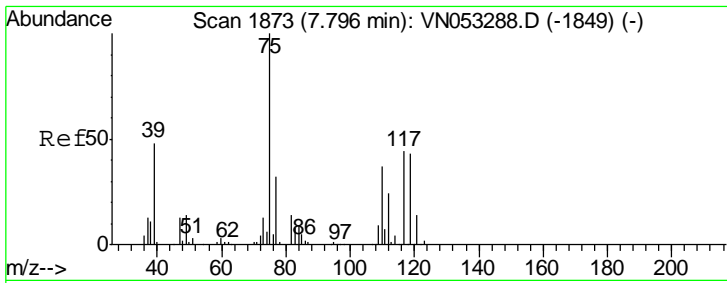
Tgt Ion	Resp	Lower	Upper
114	100		
63	19.5	0.0	39.0
88	15.1	0.0	30.8



#35
 Dibromofluoromethane
 Concen: 50.000 ug/l
 RT: 7.59 min Scan# 1809
 Delta R.T. -0.00 min
 Lab File: VN053343.D
 Acq: 10 Jan 2019 15:54

Tgt Ion	Resp	Lower	Upper
113	100		
111	103.4	81.4	122.2
192	23.1	17.9	26.9

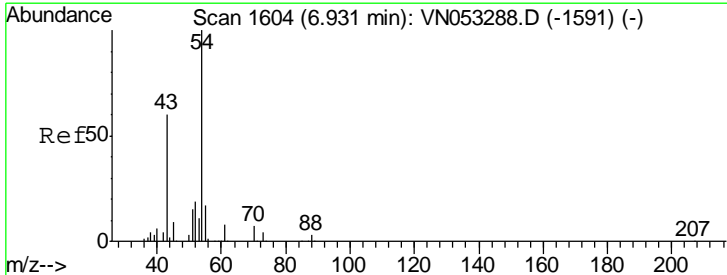
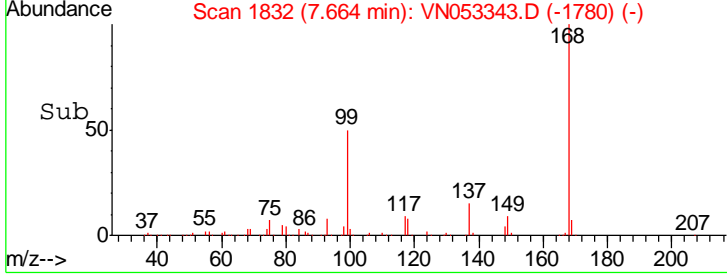
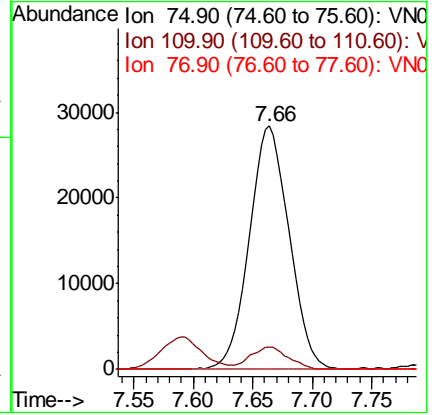
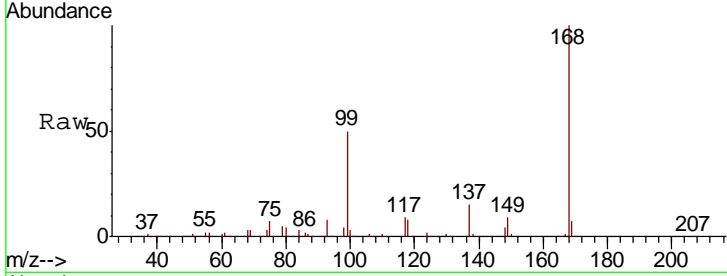




#36
 1,1-Dichloropropene
 Concen: 4.467 ug/l
 RT: 7.66 min Scan# 1832
 Delta R.T. -0.13 min
 Lab File: VN053343.D
 Acq: 10 Jan 2019 15:54

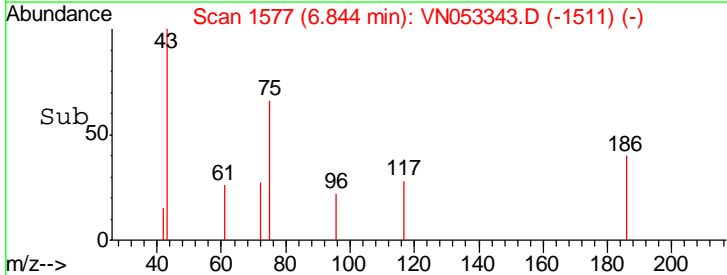
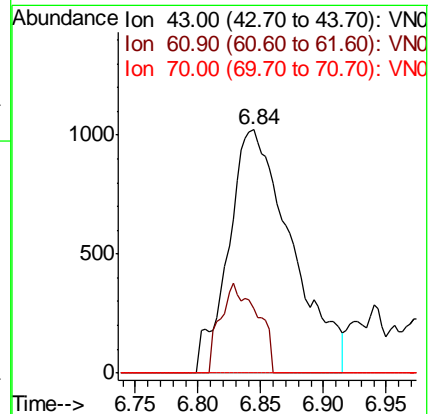
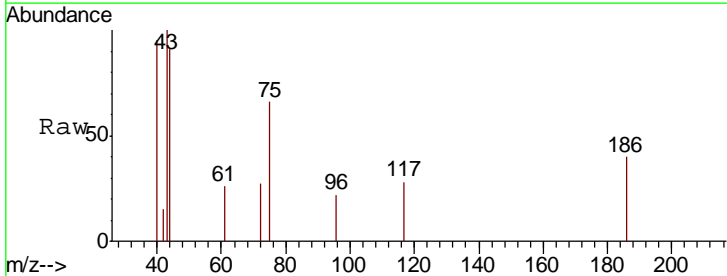
Instrument : MSVOA_N
 ClientSampled : SOIL-DRUM-B

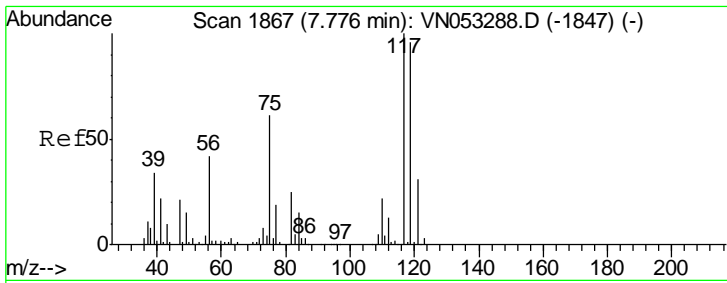
Tgt Ion	Resp	Lower	Upper
75	65714		
110	8.9	18.4	55.0#
77	0.0	25.3	37.9#



#37
 Ethyl Acetate
 Concen: 0.373 ug/l
 RT: 6.84 min Scan# 1577
 Delta R.T. -0.09 min
 Lab File: VN053343.D
 Acq: 10 Jan 2019 15:54

Tgt Ion	Resp	Lower	Upper
43	3577		
61	21.5	11.9	17.9#
70	0.0	8.6	13.0#

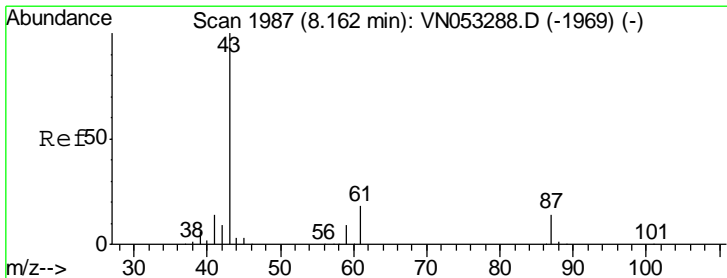
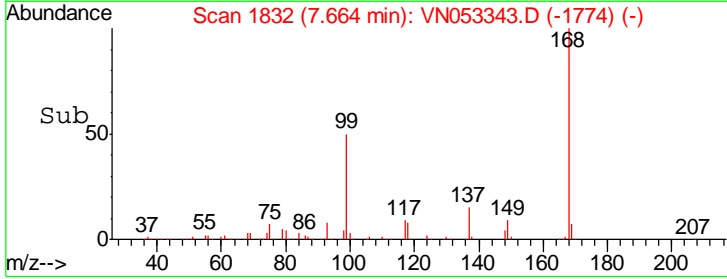
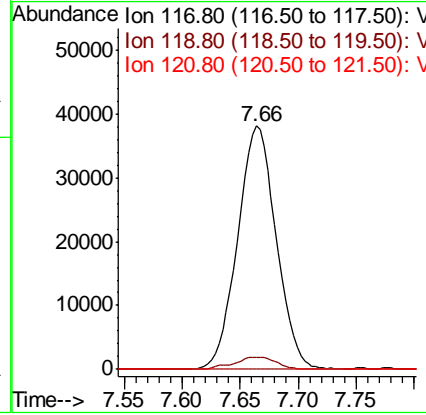
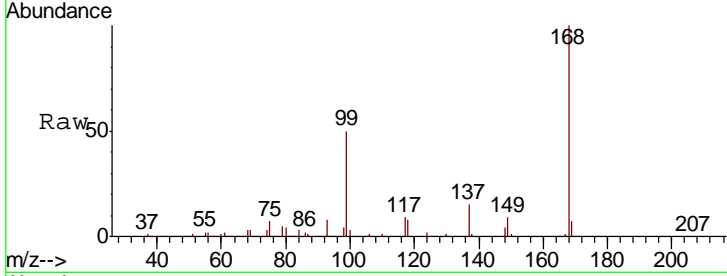




#38
 Carbon Tetrachloride
 Concen: 6.468 ug/l
 RT: 7.66 min Scan# 1832
 Delta R.T. -0.11 min
 Lab File: VN053343.D
 Acq: 10 Jan 2019 15:54

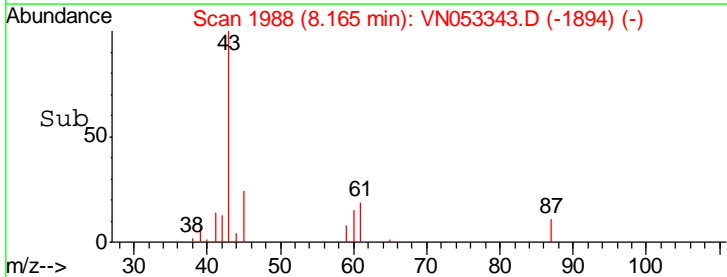
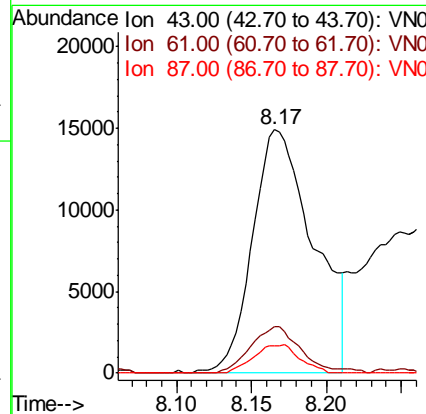
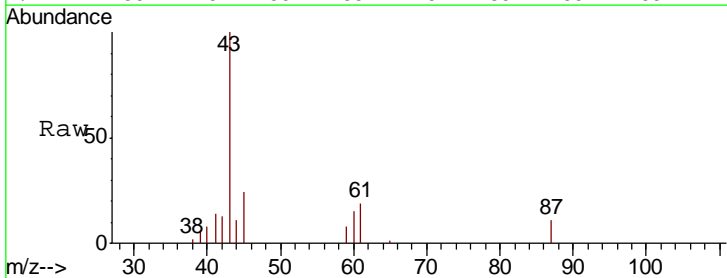
Instrument :
 MSVOA_N
 ClientSampled :
 SOIL-DRUM-B

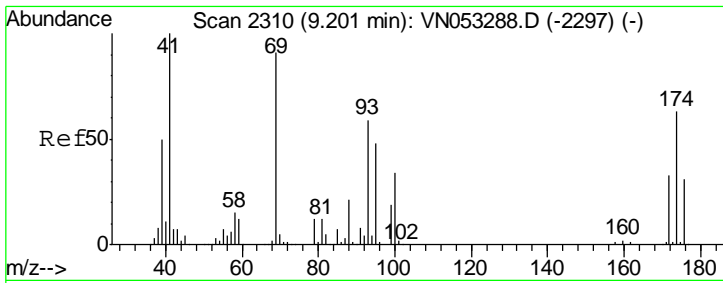
Tgt Ion: 117 Resp: 87824
 Ion Ratio Lower Upper
 117 100
 119 4.7 76.6 115.0#
 121 0.0 25.0 37.4#



#43
 Isopropyl Acetate
 Concen: 2.243 ug/l
 RT: 8.17 min Scan# 1988
 Delta R.T. 0.00 min
 Lab File: VN053343.D
 Acq: 10 Jan 2019 15:54

Tgt Ion: 43 Resp: 42284
 Ion Ratio Lower Upper
 43 100
 61 15.3 23.3 34.9#
 87 8.7 10.8 16.2#

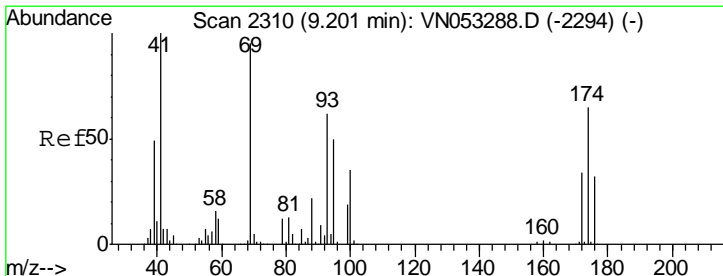
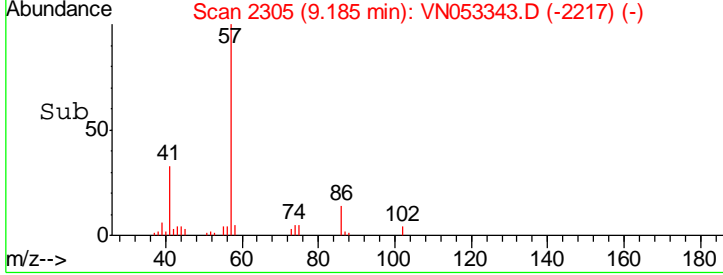
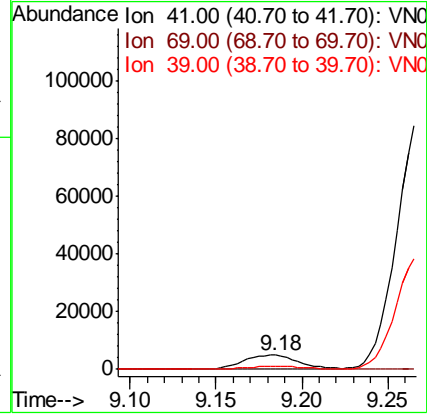
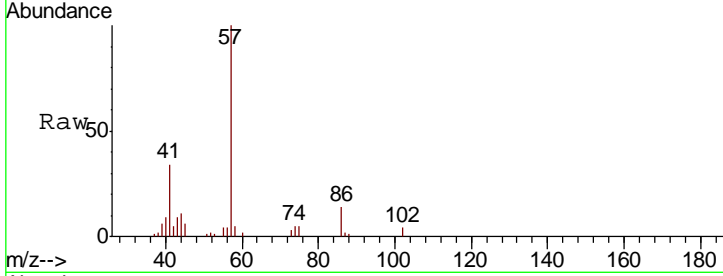




#48
 Methyl methacrylate
 Concen: 1.312 ug/l
 RT: 9.18 min Scan# 2305
 Delta R.T. -0.02 min
 Lab File: VN053343.D
 Acq: 10 Jan 2019 15:54

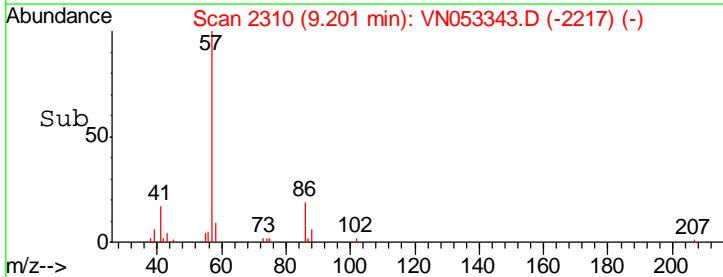
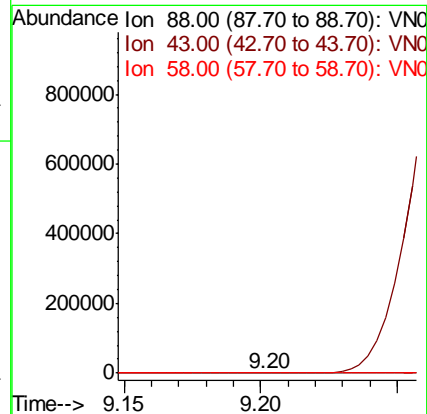
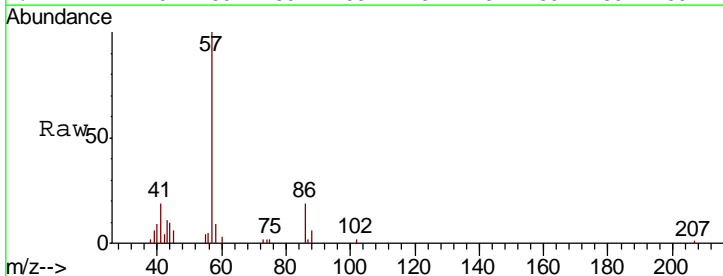
Instrument :
 MSVOA_N
ClientSampled :
 SOIL-DRUM-B

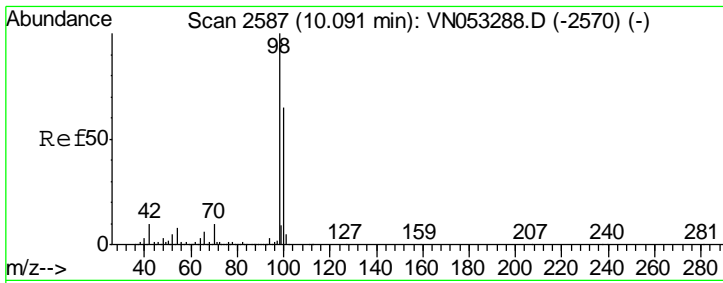
Tgt Ion	Resp	Lower	Upper
41	11234		
69	0.0	73.5	110.3#
39	21.4	41.6	62.4#



#49
 1,4-Dioxane
 Concen: 12.999 ug/l
 RT: 9.20 min Scan# 2310
 Delta R.T. 0.00 min
 Lab File: VN053343.D
 Acq: 10 Jan 2019 15:54

Tgt Ion	Resp	Lower	Upper
88	1186		
43	0.0	26.2	39.4#
58	195.4	55.5	83.3#

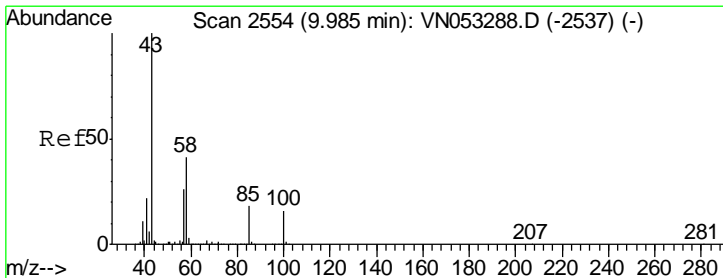
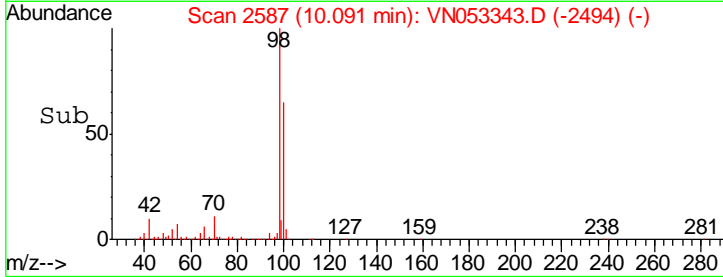
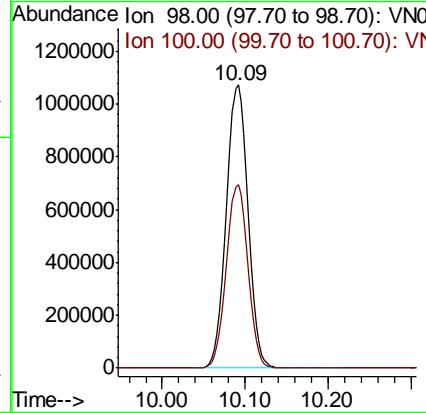
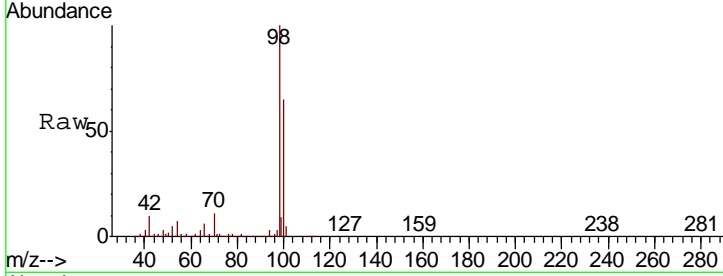




#50
 Toluene-d8
 Concen: 12.999 ug/l
 RT: 10.09 min Scan# 2587
 Delta R.T. 0.00 min
 Lab File: VN053343.D
 Acq: 10 Jan 2019 15:54

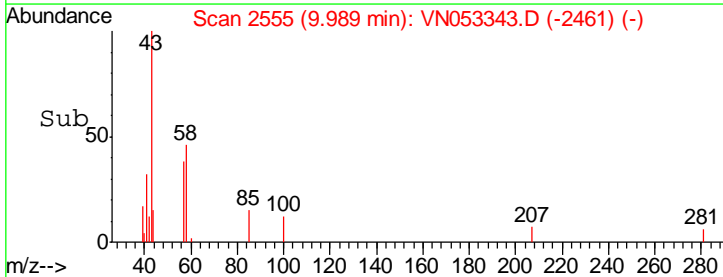
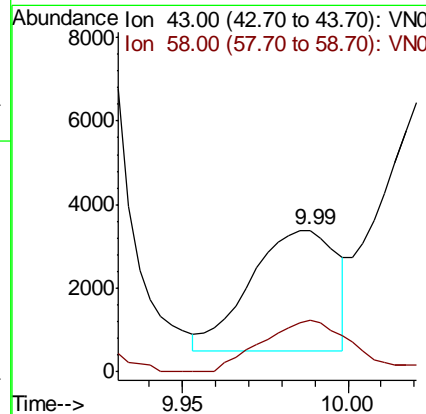
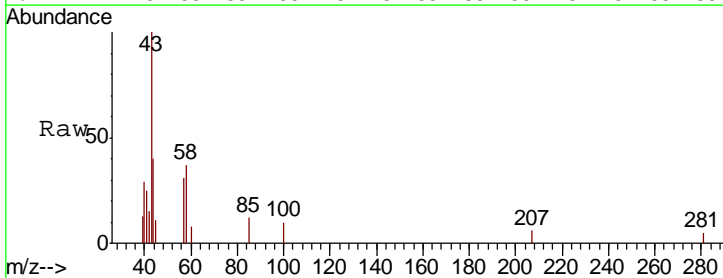
Instrument : MSVOA_N
 ClientSampled : SOIL-DRUM-B

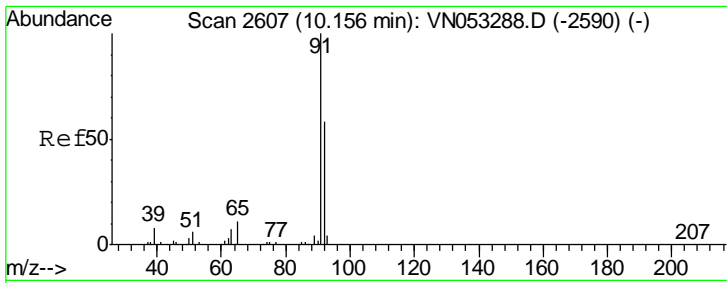
Tgt Ion: 98 Resp: 1940225
 Ion Ratio Lower Upper
 98 100
 100 64.6 51.5 77.3



#51
 4-Methyl-2-Pentanone
 Concen: 0.553 ug/l
 RT: 9.99 min Scan# 2555
 Delta R.T. 0.00 min
 Lab File: VN053343.D
 Acq: 10 Jan 2019 15:54

Tgt Ion: 43 Resp: 5240
 Ion Ratio Lower Upper
 43 100
 58 44.8 32.7 49.1

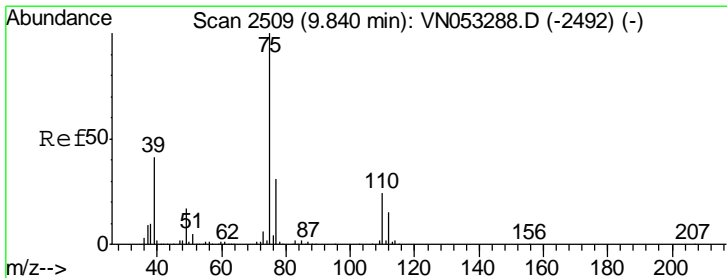
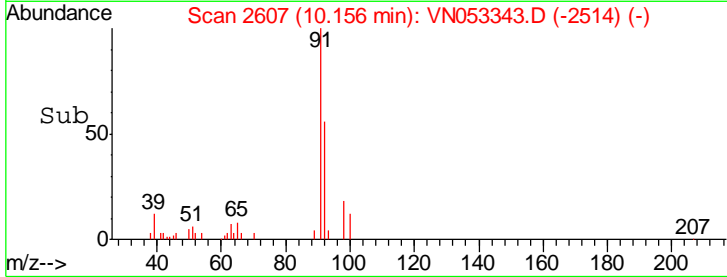
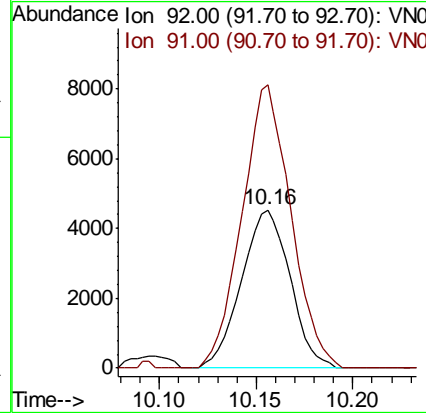
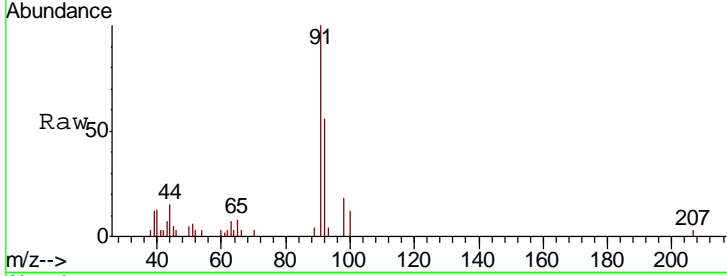




#52
 Toluene
 Concen: 0.288 ug/l
 RT: 10.16 min Scan# 2607
 Delta R.T. 0.00 min
 Lab File: VN053343.D
 Acq: 10 Jan 2019 15:54

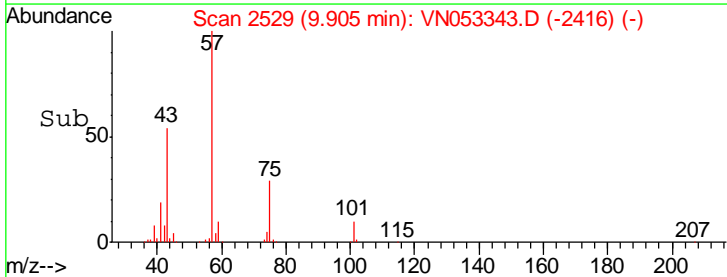
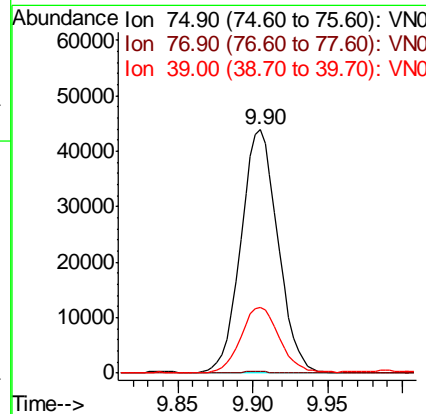
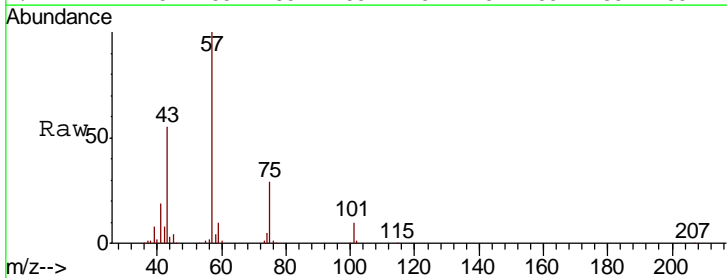
Instrument :
 MSVOA_N
 ClientSampled :
 SOIL-DRUM-B

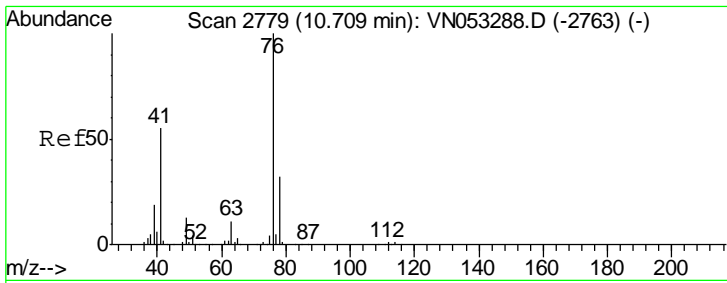
Tgt Ion: 92 Resp: 7934
 Ion Ratio Lower Upper
 92 100
 91 180.1 138.6 208.0



#54
 cis-1,3-Dichloropropene
 Concen: 4.464 ug/l
 RT: 9.90 min Scan# 2529
 Delta R.T. 0.06 min
 Lab File: VN053343.D
 Acq: 10 Jan 2019 15:54

Tgt Ion: 75 Resp: 75562
 Ion Ratio Lower Upper
 75 100
 77 0.6 25.1 37.7#
 39 26.9 33.1 49.7#

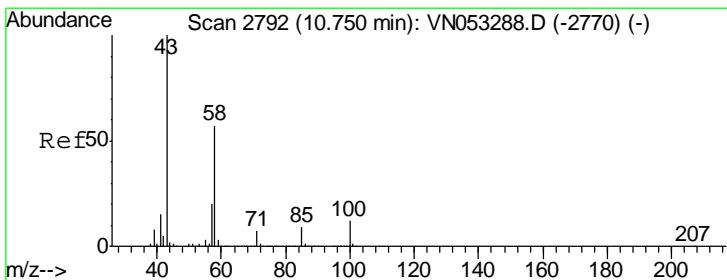
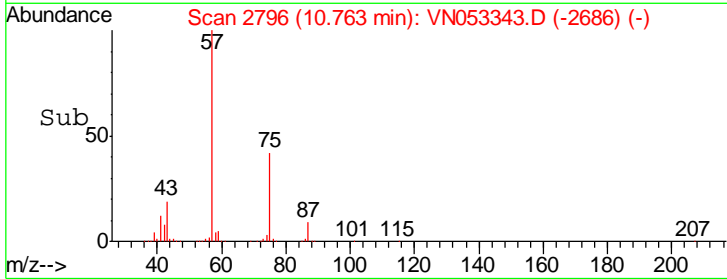
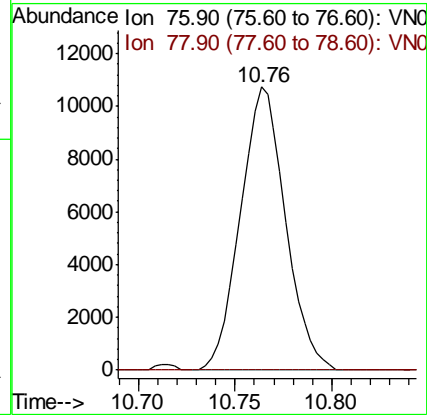
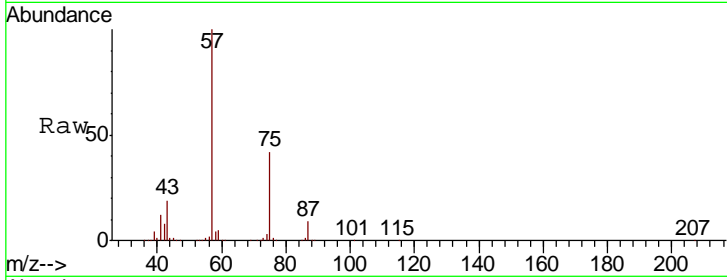




#57
 1,3-Dichloropropane
 Concen: 1.026 ug/l
 RT: 10.76 min Scan# 2796
 Delta R.T. 0.05 min
 Lab File: VN053343.D
 Acq: 10 Jan 2019 15:54

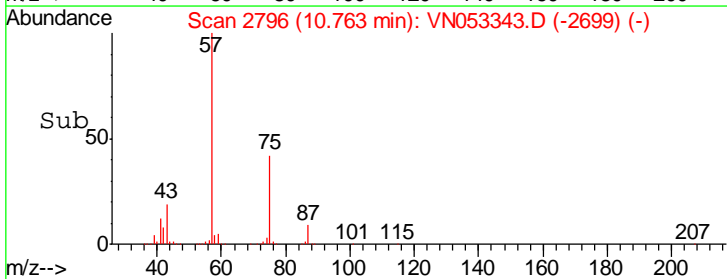
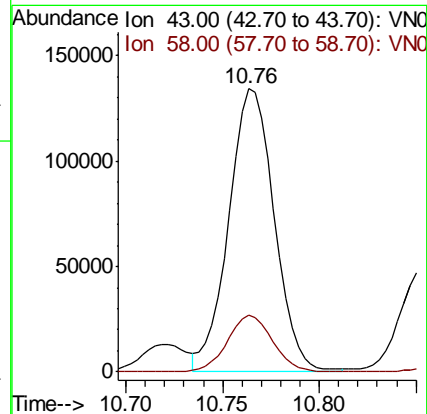
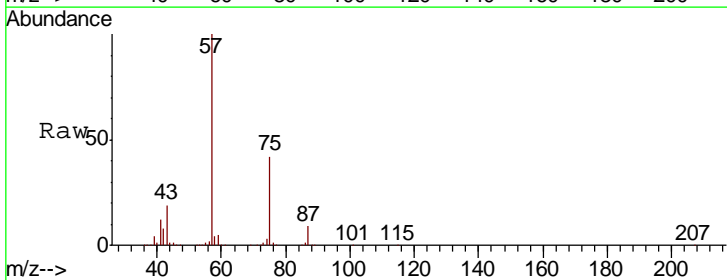
Instrument :
 MSVOA_N
 ClientSampled :
 SOIL-DRUM-B

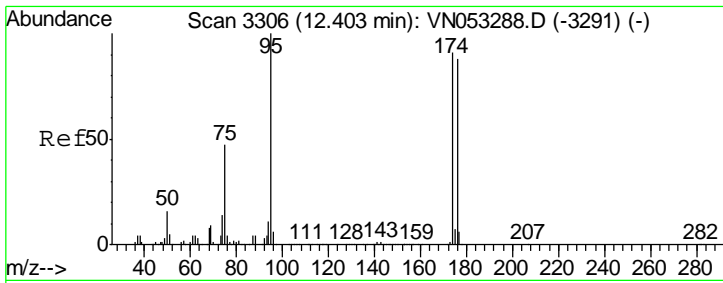
Tgt Ion: 76 Resp: 17396
 Ion Ratio Lower Upper
 76 100
 78 0.0 25.8 38.8#



#59
 2-Hexanone
 Concen: 33.566 ug/l
 RT: 10.76 min Scan# 2796
 Delta R.T. 0.01 min
 Lab File: VN053343.D
 Acq: 10 Jan 2019 15:54

Tgt Ion: 43 Resp: 217996
 Ion Ratio Lower Upper
 43 100
 58 20.1 28.3 85.0#

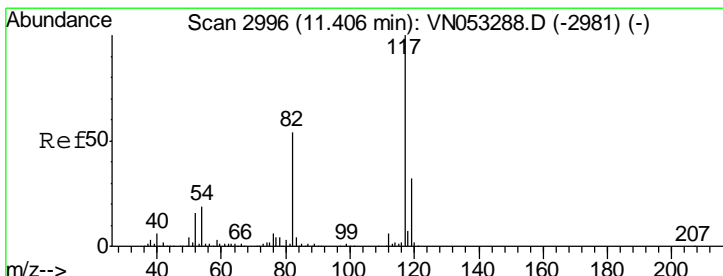
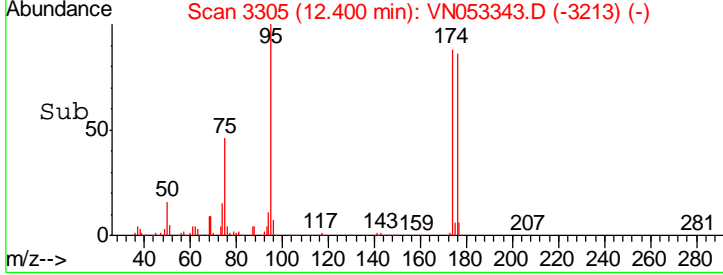
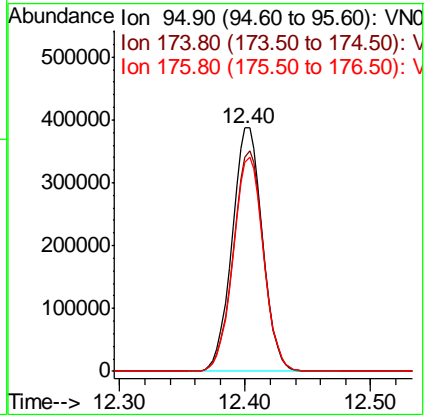
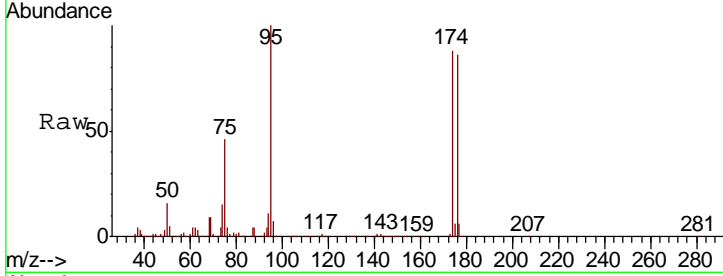




#62
 4-Bromofluorobenzene
 Concen: N.D. ug/l
 RT: 12.40 min Scan# 3305
 Delta R.T. -0.00 min
 Lab File: VN053343.D
 Acq: 10 Jan 2019 15:54

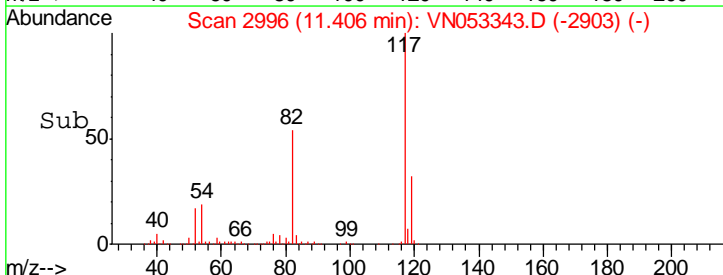
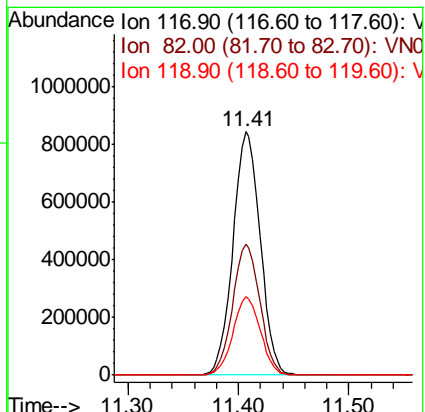
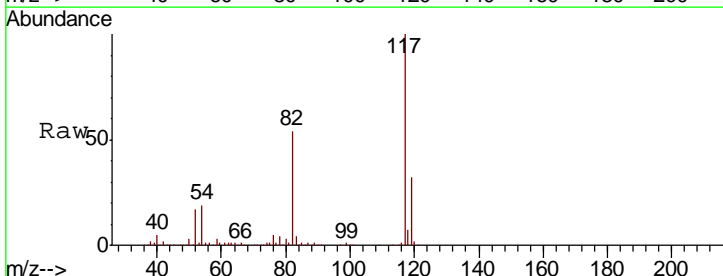
Instrument : MSVOA_N
 ClientSampled : SOIL-DRUM-B

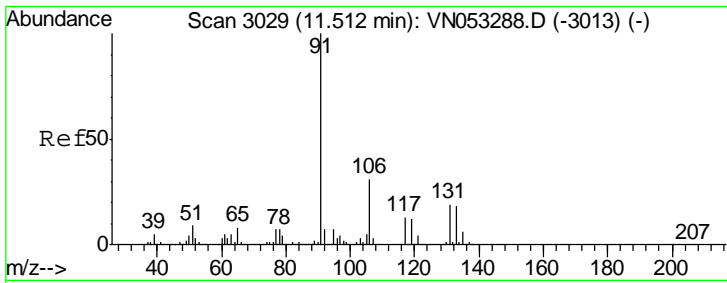
Tgt Ion	Resp	Lower	Upper
95	100		
174	90.3	0.0	180.4
176	87.9	0.0	175.6



#63
 Chlorobenzene-d5
 Concen: 50.000 ug/l
 RT: 11.41 min Scan# 2996
 Delta R.T. 0.00 min
 Lab File: VN053343.D
 Acq: 10 Jan 2019 15:54

Tgt Ion	Resp	Lower	Upper
117	100		
82	54.0	42.9	64.3
119	32.0	25.6	38.4

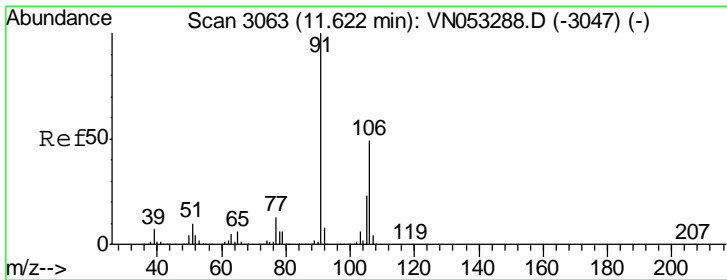
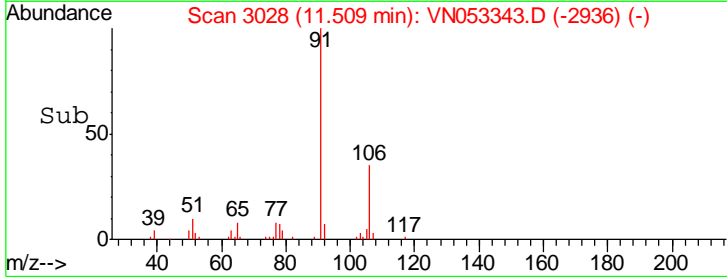
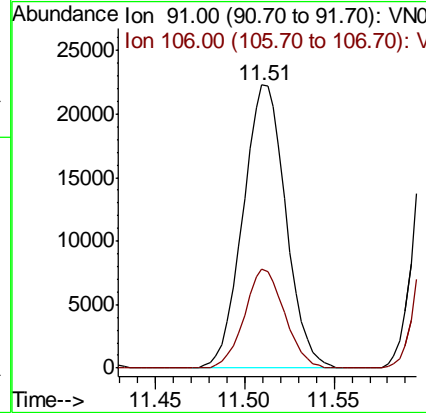
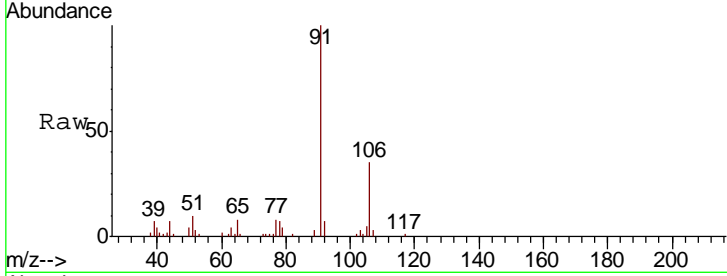




#67
 Ethyl Benzene
 Concen: 0.701 ug/l
 RT: 11.51 min Scan# 3028
 Delta R.T. -0.00 min
 Lab File: VN053343.D
 Acq: 10 Jan 2019 15:54

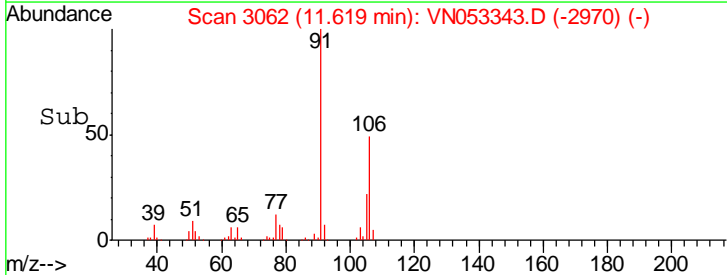
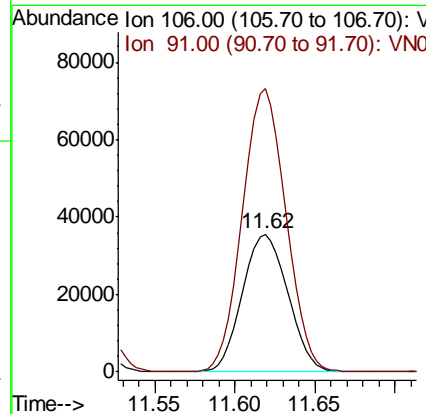
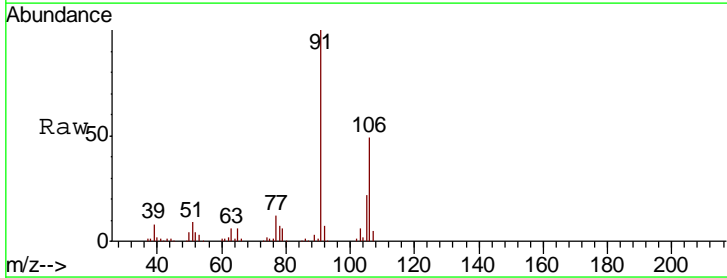
Instrument :
 MSVOA_N
 ClientSampled :
 SOIL-DRUM-B

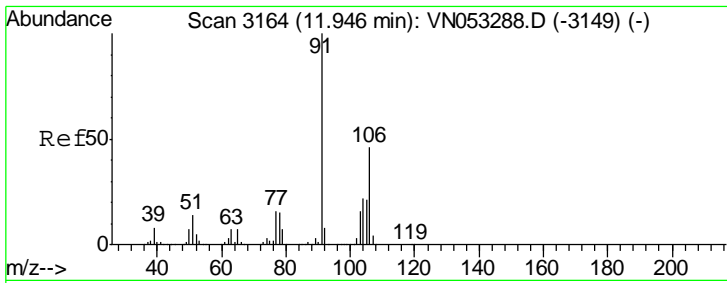
Tgt Ion: 91 Resp: 37412
 Ion Ratio Lower Upper
 91 100
 106 35.0 25.0 37.4



#68
 m/p-Xylenes
 Concen: 3.449 ug/l
 RT: 11.62 min Scan# 3062
 Delta R.T. -0.00 min
 Lab File: VN053343.D
 Acq: 10 Jan 2019 15:54

Tgt Ion: 106 Resp: 69160
 Ion Ratio Lower Upper
 106 100
 91 196.9 161.4 242.2

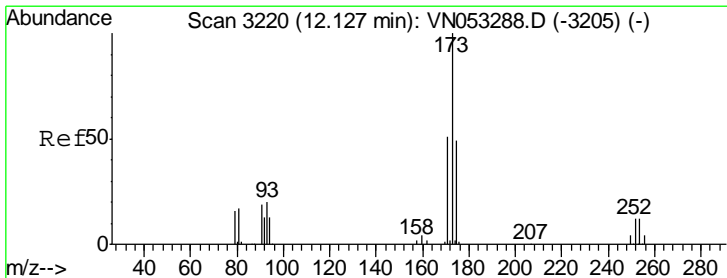
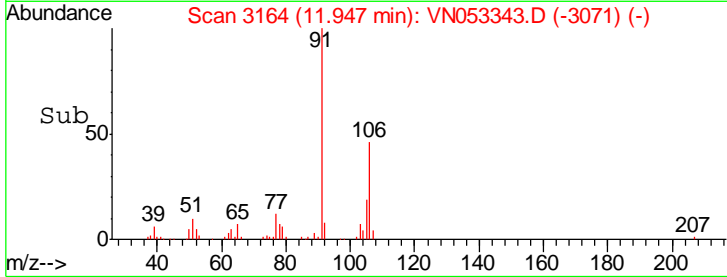
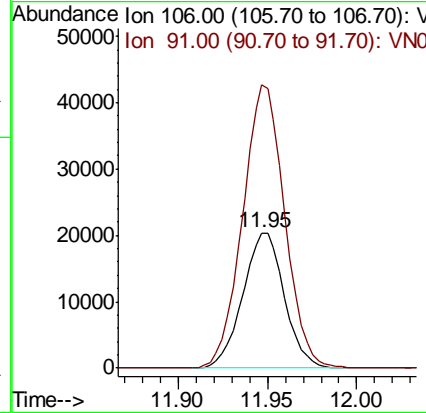
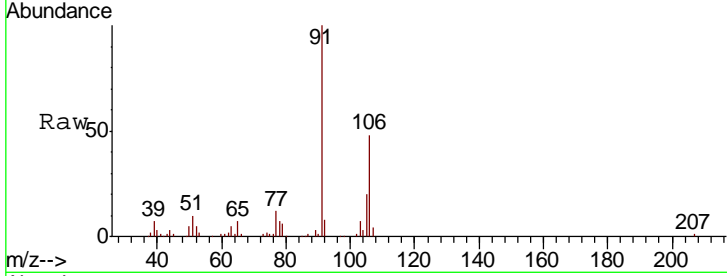




#69
 o-Xylene
 Concen: 1.681 ug/l
 RT: 11.95 min Scan# 3164
 Delta R.T. 0.00 min
 Lab File: VN053343.D
 Acq: 10 Jan 2019 15:54

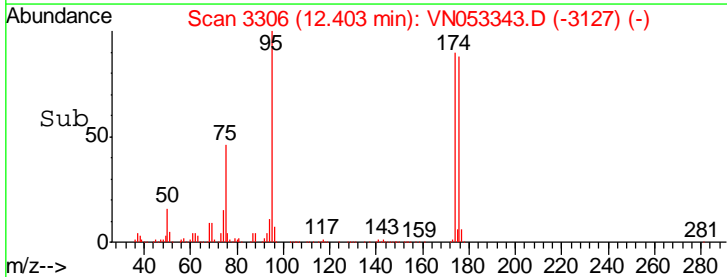
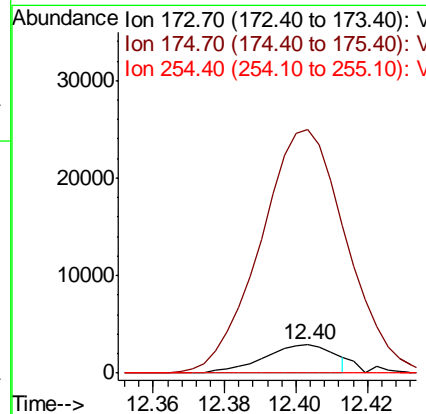
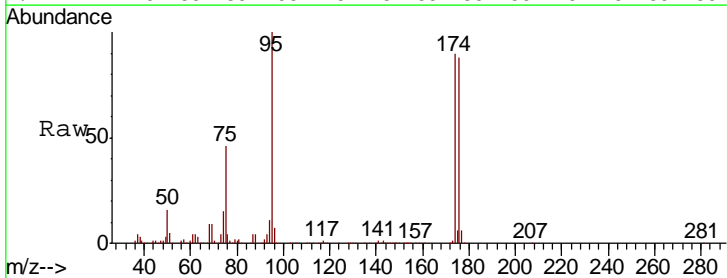
Instrument :
 MSVOA_N
 ClientSampled :
 SOIL-DRUM-B

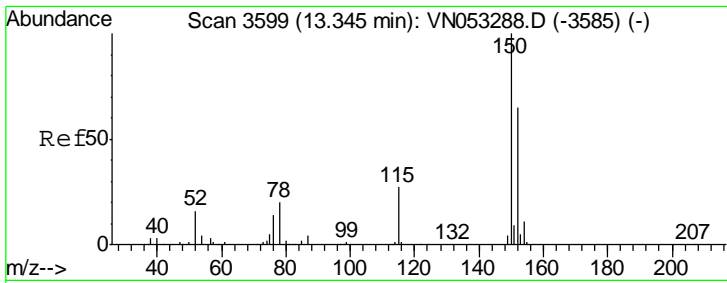
Tgt Ion:106 Resp: 32999
 Ion Ratio Lower Upper
 106 100
 91 211.2 106.8 320.4



#71
 Bromoform
 Concen: 0.515 ug/l
 RT: 12.40 min Scan# 3306
 Delta R.T. 0.28 min
 Lab File: VN053343.D
 Acq: 10 Jan 2019 15:54

Tgt Ion:173 Resp: 3994
 Ion Ratio Lower Upper
 173 100
 175 903.5 24.3 72.8#
 254 0.0 0.2 0.2#

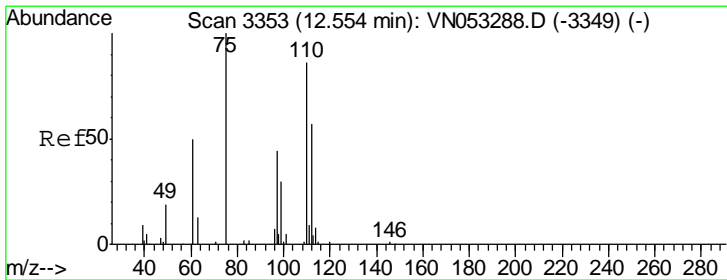
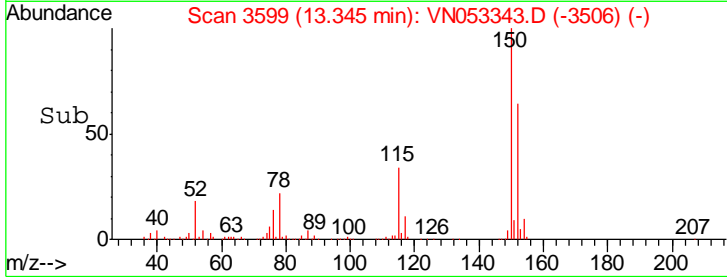
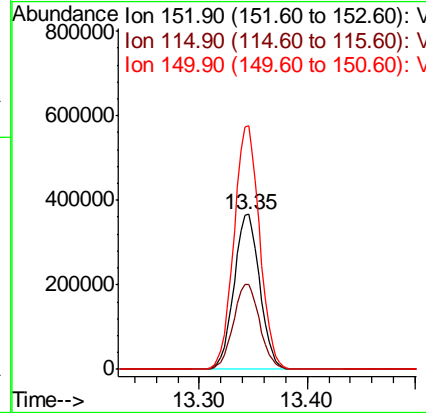
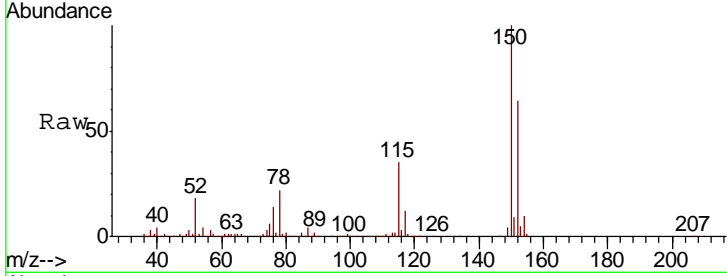




#72
 1,4-Dichlorobenzene-d4
 Concen: 50.000 ug/l
 RT: 13.35 min Scan# 3599
 Delta R.T. 0.00 min
 Lab File: VN053343.D
 Acq: 10 Jan 2019 15:54

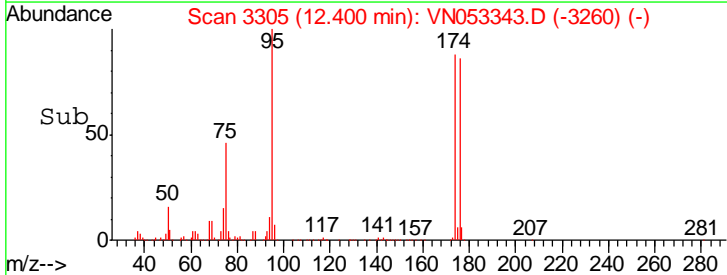
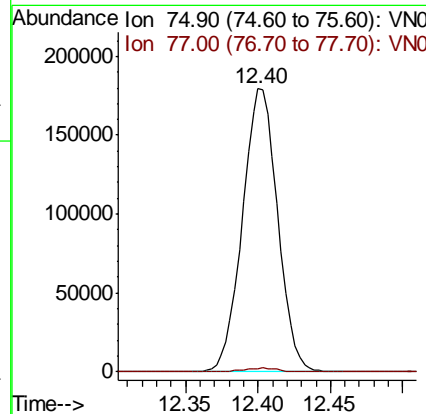
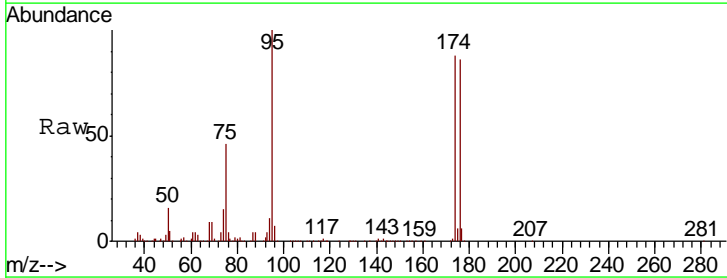
Instrument :
 MSVOA_N
 ClientSampled :
 SOIL-DRUM-B

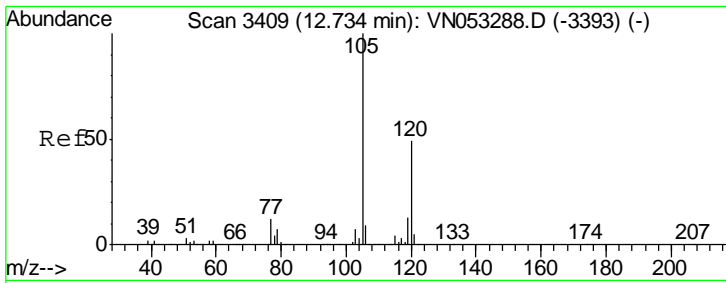
Tgt Ion	Resp	Lower	Upper
152	100		
115	56.3	28.0	84.0
150	156.8	0.0	346.6



#76
 1,2,3-Trichloropropane
 Concen: 34.287 ug/l
 RT: 12.40 min Scan# 3305
 Delta R.T. -0.15 min
 Lab File: VN053343.D
 Acq: 10 Jan 2019 15:54

Tgt Ion	Resp	Lower	Upper
75	100		
77	1.3	0.0	0.0#

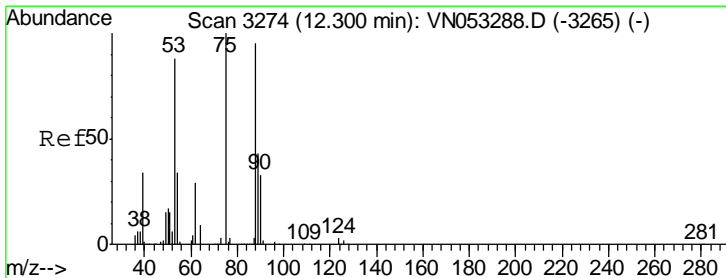
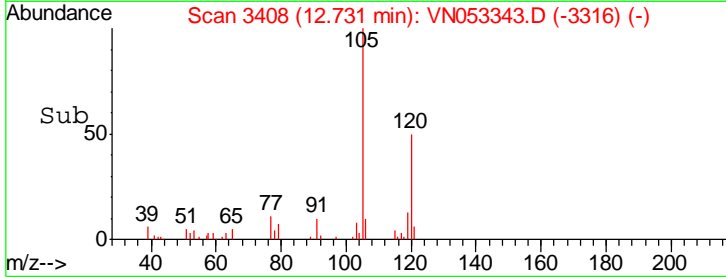
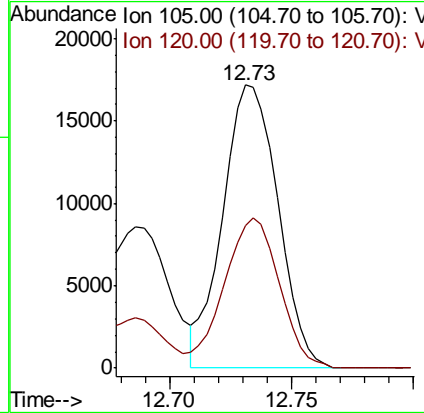
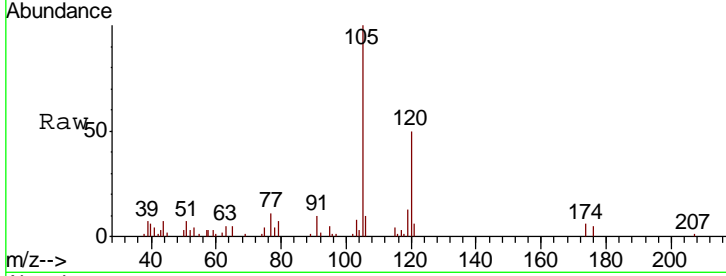




#80
 1,3,5-Trimethylbenzene
 Concen: 0.746 ug/l
 RT: 12.73 min Scan# 3408
 Delta R.T. -0.00 min
 Lab File: VN053343.D
 Acq: 10 Jan 2019 15:54

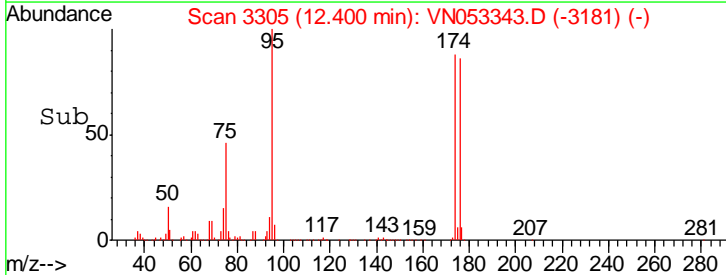
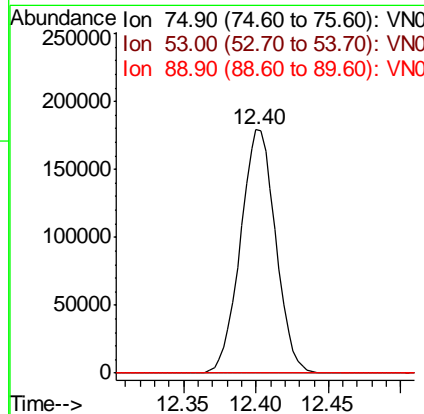
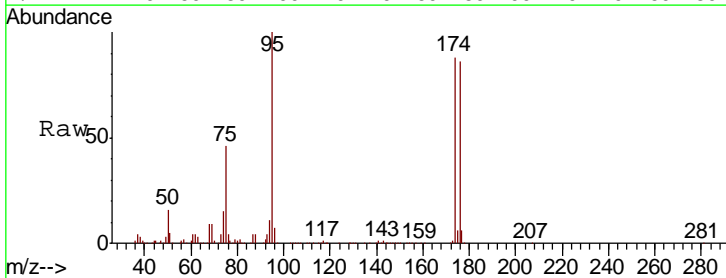
Instrument :
 MSVOA_N
 ClientSampled :
 SOIL-DRUM-B

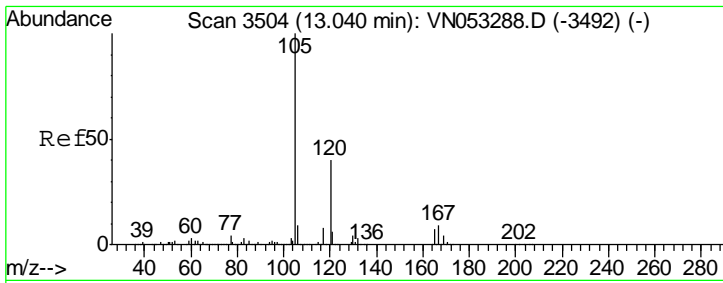
Tgt Ion: 105.00 (104.70 to 105.70): V
 Ion Ratio Lower Upper
 105 100
 120 53.2 24.7 74.1



#81
 trans-1,4-Dichloro-2-butene
 Concen: 100.877 ug/l
 RT: 12.40 min Scan# 3305
 Delta R.T. 0.10 min
 Lab File: VN053343.D
 Acq: 10 Jan 2019 15:54

Tgt Ion: 75 Resp: 302621
 Ion Ratio Lower Upper
 75 100
 53 0.0 70.5 105.7#
 89 0.0 35.4 53.0#

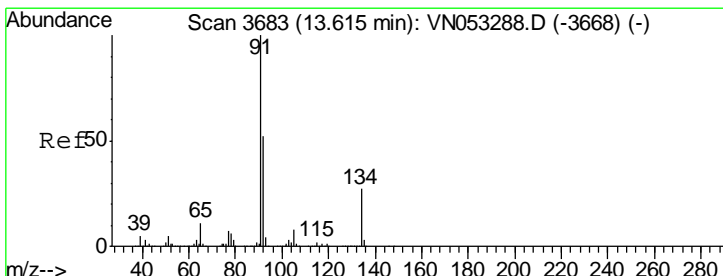
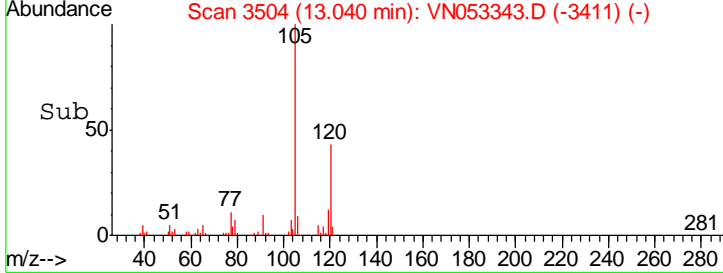
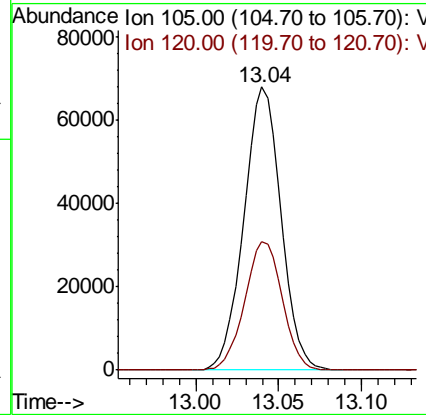
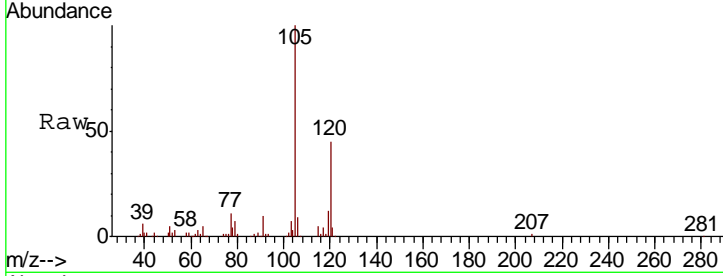




#84
 1,2,4-Trimethylbenzene
 Concen: 2.868 ug/l
 RT: 13.04 min Scan# 3504
 Delta R.T. 0.00 min
 Lab File: VN053343.D
 Acq: 10 Jan 2019 15:54

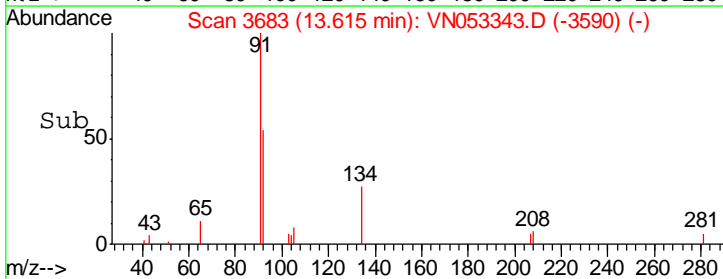
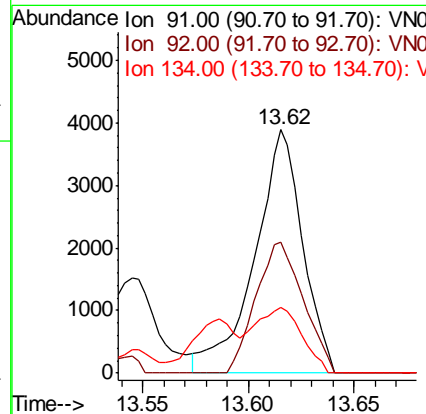
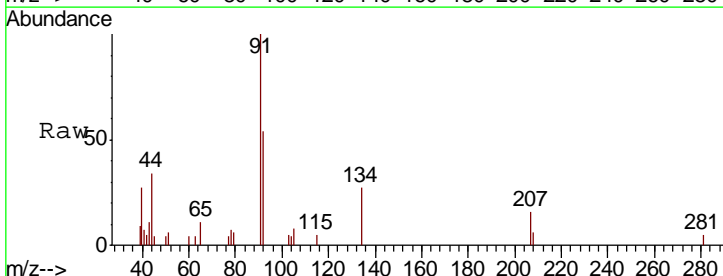
Instrument :
 MSVOA_N
 ClientSampled :
 SOIL-DRUM-B

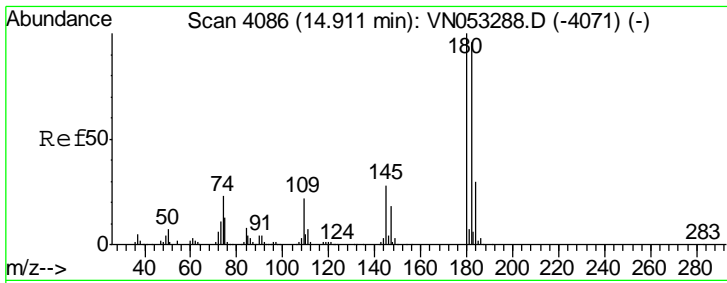
Tgt Ion: 105 Resp: 106023
 Ion Ratio Lower Upper
 105 100
 120 45.9 23.0 69.0



#89
 n-Butylbenzene
 Concen: 0.201 ug/l
 RT: 13.62 min Scan# 3683
 Delta R.T. 0.00 min
 Lab File: VN053343.D
 Acq: 10 Jan 2019 15:54

Tgt Ion: 91 Resp: 6141
 Ion Ratio Lower Upper
 91 100
 92 53.1 26.3 78.8
 134 26.8 13.5 40.5

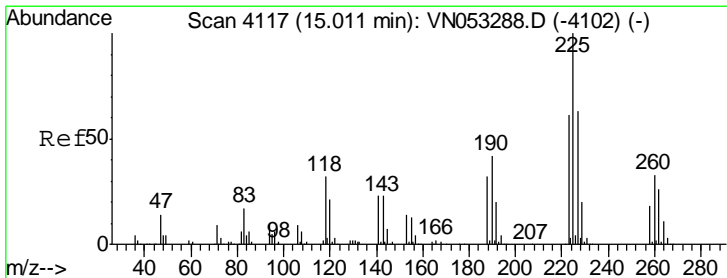
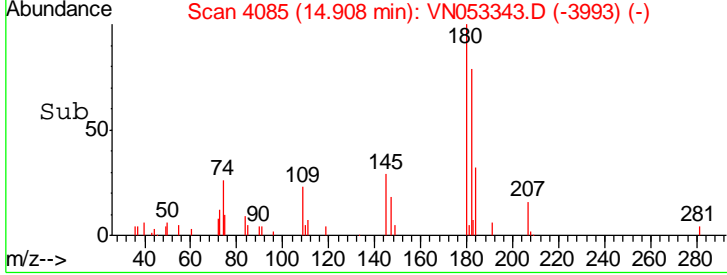
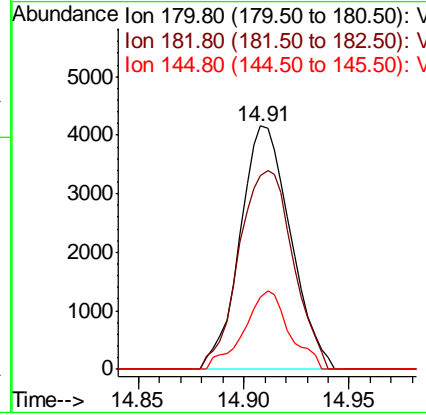
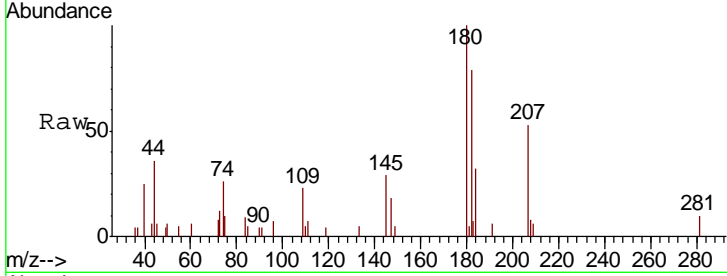




#93
 1,2,4-Trichlorobenzene
 Concen: 1.109 ug/l
 RT: 14.91 min Scan# 4085
 Delta R.T. -0.00 min
 Lab File: VN053343.D
 Acq: 10 Jan 2019 15:54

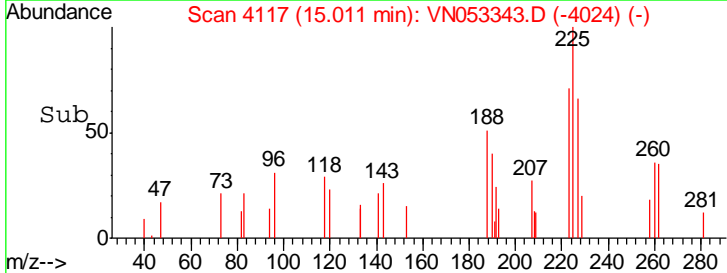
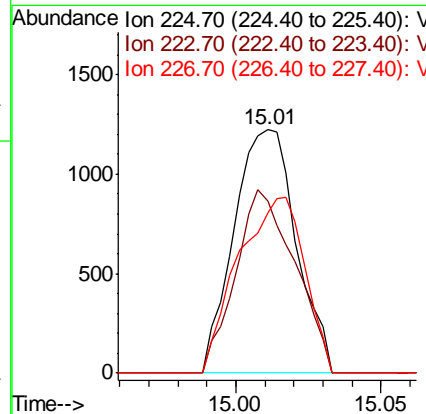
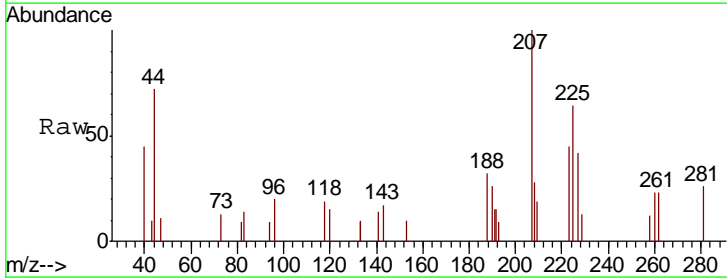
Instrument :
 MSVOA_N
 ClientSampleId :
 SOIL-DRUM-B

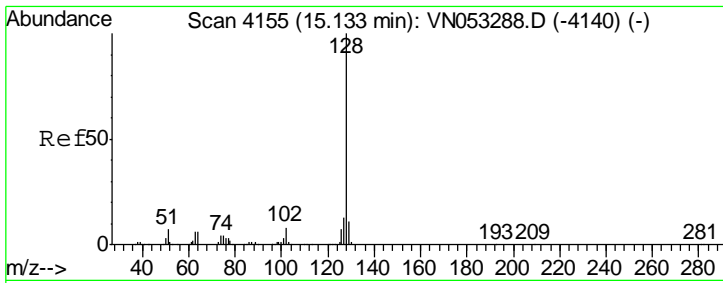
Tgt Ion	Resp	Lower	Upper
180	6917		
182	87.6	47.8	143.4
145	28.9	14.4	43.0



#94
 Hexachlorobutadiene
 Concen: 0.358 ug/l
 RT: 15.01 min Scan# 4117
 Delta R.T. 0.00 min
 Lab File: VN053343.D
 Acq: 10 Jan 2019 15:54

Tgt Ion	Resp	Lower	Upper
225	1828		
223	71.6	30.9	92.8
227	77.0	31.4	94.2

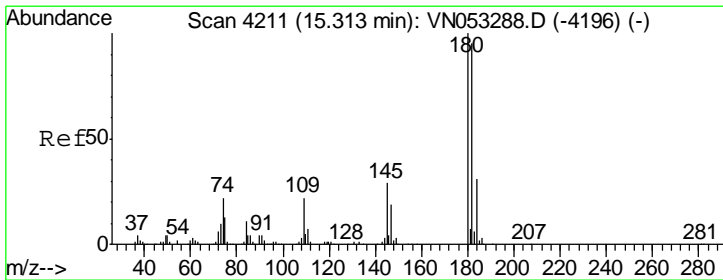
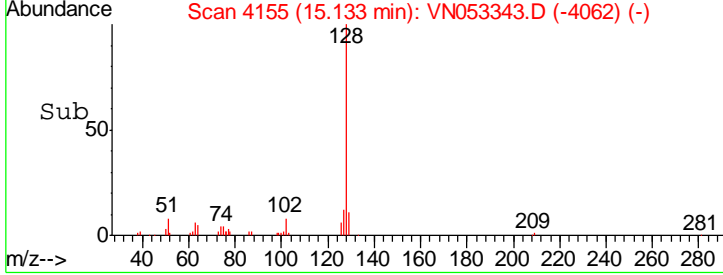
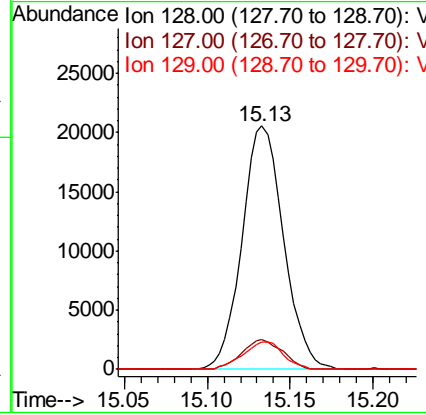
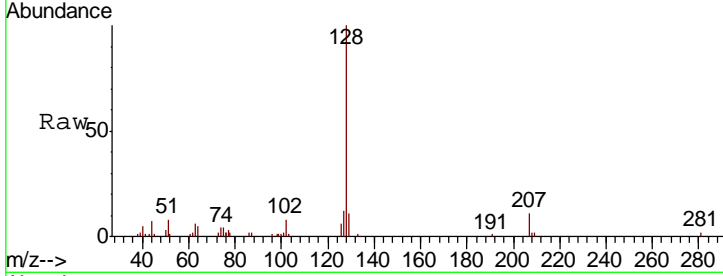




#95
 Naphthalene
 Concen: 3.370 ug/l
 RT: 15.13 min Scan# 4155
 Delta R.T. 0.00 min
 Lab File: VN053343.D
 Acq: 10 Jan 2019 15:54

Instrument : MSVOA_N
 ClientSampled : SOIL-DRUM-B

Tgt Ion	Resp	Lower	Upper
128	35851		
127	12.0	10.4	15.6
129	11.0	8.7	13.1



#96
 1,2,3-Trichlorobenzene
 Concen: 1.710 ug/l
 RT: 15.32 min Scan# 4212
 Delta R.T. 0.00 min
 Lab File: VN053343.D
 Acq: 10 Jan 2019 15:54

Tgt Ion	Resp	Lower	Upper
180	6984		
182	94.1	48.4	145.0
145	34.2	14.9	44.5

