

Data Path : Z:\voasrv\HPCHEM1\MSVOA\_N\Data\VN011224\  
 Data File : VN080707.D  
 Acq On : 12 Jan 2024 22:04  
 Operator : JC\MD  
 Sample : P1111-13  
 Misc : 2.62g/10mL/100uL/5.00mL/MSVOA\_N/MEOH  
 ALS Vial : 26 Sample Multiplier: 1

Instrument :  
 MSVOA\_N  
 ClientSampleId :

Quant Time: Jan 13 03:19:50 2024  
 Quant Method : Z:\voasrv\HPCHEM1\MSVOA\_N\methods\82N011024W.M  
 Quant Title : SW846 8260  
 QLast Update : Thu Jan 11 06:34:36 2024  
 Response via : Initial Calibration

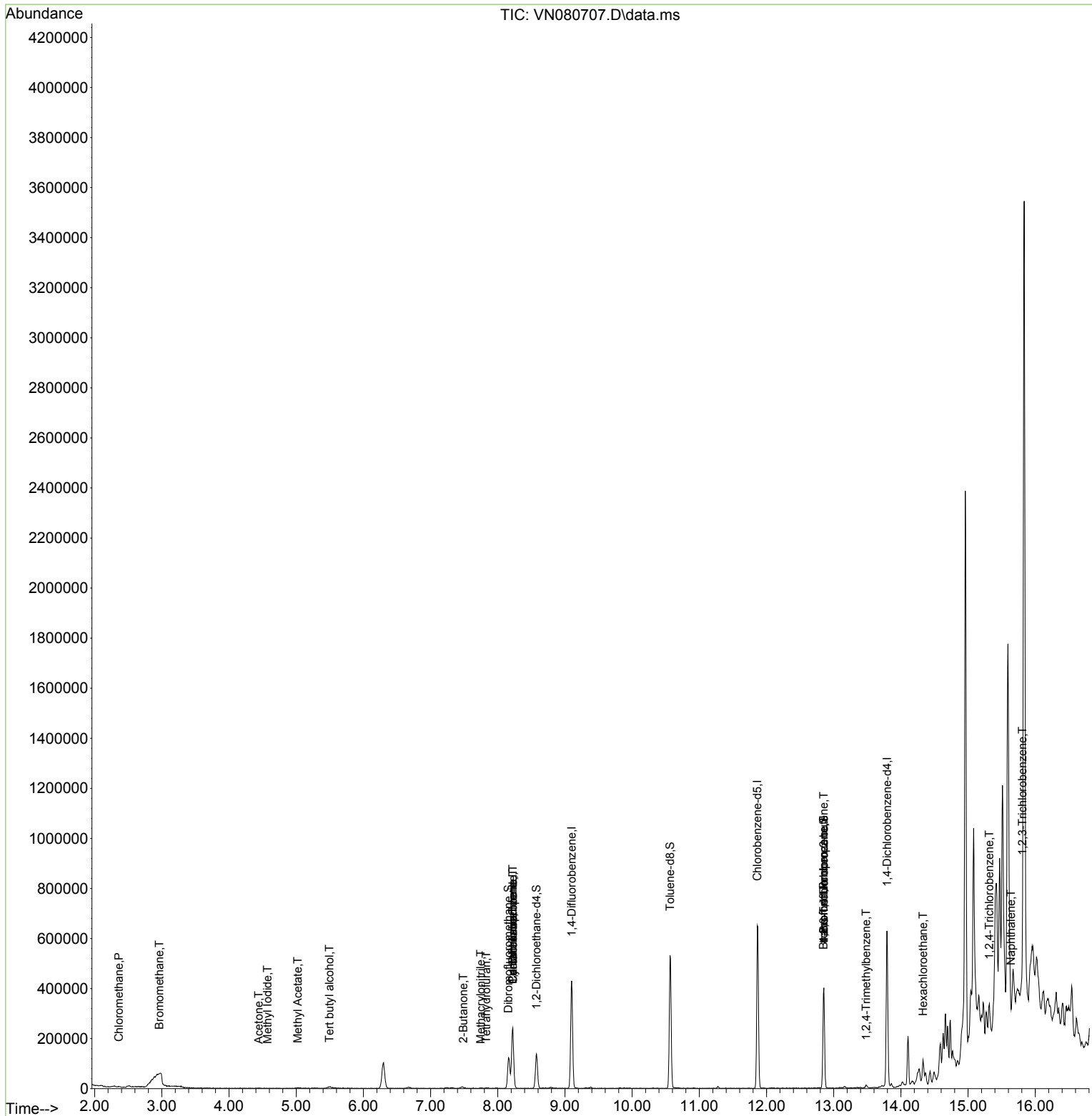
Compound	R.T.	QIon	Response	Conc	Units	Dev(Min)
-----						
Internal Standards						
1) Pentafluorobenzene	8.224	168	156963	50.000	ug/l	0.00
34) 1,4-Difluorobenzene	9.100	114	346246	50.000	ug/l	0.00
63) Chlorobenzene-d5	11.865	117	345286	50.000	ug/l	0.00
72) 1,4-Dichlorobenzene-d4	13.794	152	150568	50.000	ug/l	0.00
System Monitoring Compounds						
33) 1,2-Dichloroethane-d4	8.577	65	109319	39.660	ug/l	0.00
Spiked Amount	50.000	Range 74 - 125	Recovery =	79.320%		
35) Dibromofluoromethane	8.159	113	89315	45.400	ug/l	0.00
Spiked Amount	50.000	Range 75 - 124	Recovery =	90.800%		
50) Toluene-d8	10.565	98	352368	46.974	ug/l	0.00
Spiked Amount	50.000	Range 86 - 113	Recovery =	93.940%		
62) 4-Bromofluorobenzene	12.853	95	144011	50.063	ug/l	0.00
Spiked Amount	50.000	Range 83 - 123	Recovery =	100.120%		
Target Compounds						
						Qvalue
3) Chloromethane	2.359	50	3397	0.534	ug/l #	88
5) Bromomethane	2.965	94	652	0.741	ug/l #	4
6) Chloroethane	3.083	64	104	Below Cal	#	43
10) Methyl Iodide	4.571	142	580	0.333	ug/l #	64
11) Tert butyl alcohol	5.494	59	5696	12.219	ug/l #	72
16) Acetone	4.441	43	1044	1.154	ug/l #	40
18) Methyl Acetate	5.024	43	5766	2.140	ug/l #	54
25) 2-Butanone	7.488	43	1813	1.108	ug/l #	37
29) Tetrahydrofuran	7.830	42	710	0.644	ug/l #	40
31) Cyclohexane	8.224	56	6441	1.512	ug/l #	32
36) 1,1-Dichloropropene	8.224	75	16765	4.160	ug/l #	47
38) Carbon Tetrachloride	8.224	117	17099	4.726	ug/l #	15
41) Methacrylonitrile	7.747	41	1537	0.678	ug/l #	25
71) Bromoform	12.847	173	380	0.206	ug/l #	1
76) 1,2,3-Trichloropropane	12.853	75	80038	17.239	ug/l #	1
81) trans-1,4-Dichloro-2-b...	12.853	75	80038	40.639	ug/l #	15
84) 1,2,4-Trimethylbenzene	13.482	105	6164	0.525	ug/l	100
90) Hexachloroethane	14.329	117	3628	1.828	ug/l #	21
92) 1,2-Dibromo-3-Chloropr...	14.747	75	57	Below Cal	#	1
93) 1,2,4-Trichlorobenzene	15.317	180	1176	0.441	ug/l	89
95) Naphthalene	15.641	128	20356	1.940	ug/l #	75
96) 1,2,3-Trichlorobenzene	15.811	180	3156	1.223	ug/l	64

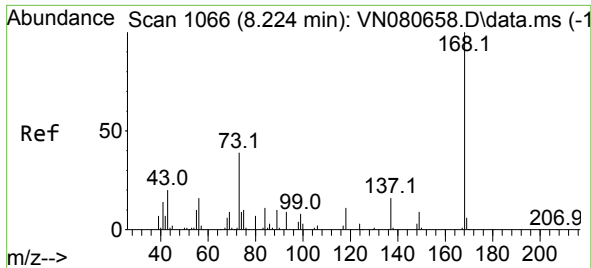
(#) = qualifier out of range (m) = manual integration (+) = signals summed

Data Path : Z:\voasrv\HPCHEM1\MSVOA\_N\Data\VN011224\  
 Data File : VN080707.D  
 Acq On : 12 Jan 2024 22:04  
 Operator : JC\MD  
 Sample : P1111-13  
 Misc : 2.62g/10mL/100uL/5.00mL/MSVOA\_N/MEOH  
 ALS Vial : 26 Sample Multiplier: 1

Instrument :  
 MSVOA\_N  
 ClientSampleId :

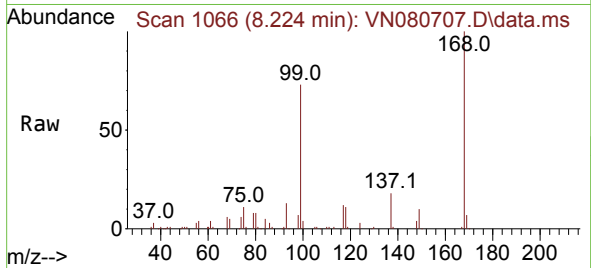
Quant Time: Jan 13 03:19:50 2024  
 Quant Method : Z:\voasrv\HPCHEM1\MSVOA\_N\methods\82N011024W.M  
 Quant Title : SW846 8260  
 QLast Update : Thu Jan 11 06:34:36 2024  
 Response via : Initial Calibration



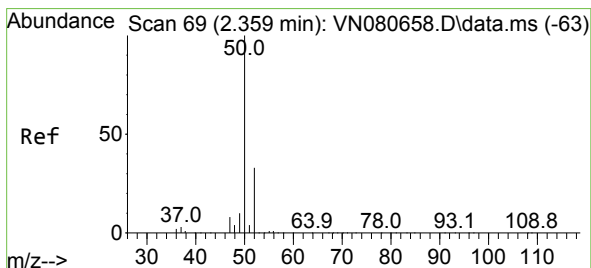
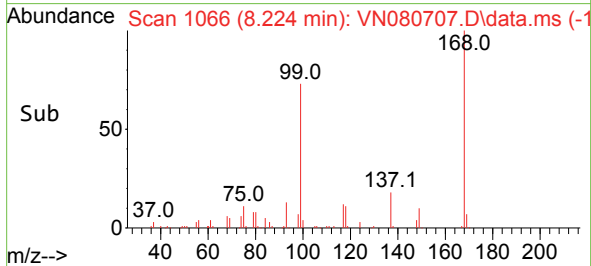
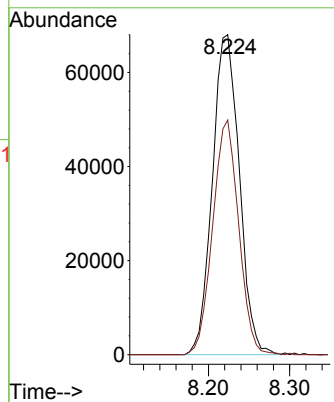


#1  
 Pentafluorobenzene  
 Concen: 50.000 ug/l  
 RT: 8.224 min Scan# 1066  
 Delta R.T. -0.000 min  
 Lab File: VN080707.D  
 Acq: 12 Jan 2024 22:04

Instrument :  
 MSVOA\_N  
 ClientSampleId :

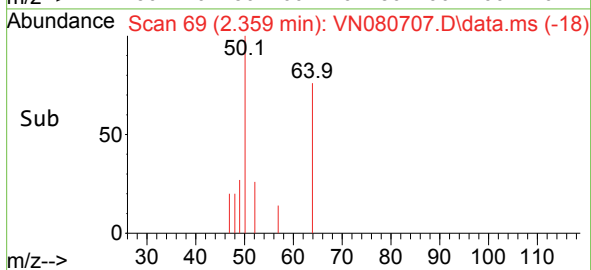
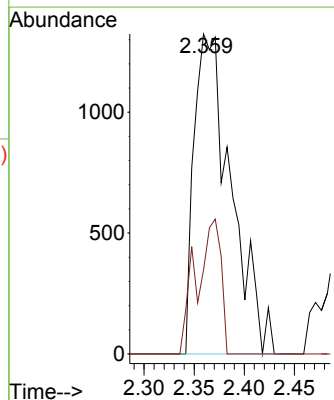
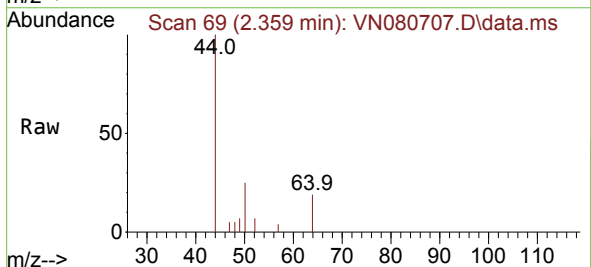


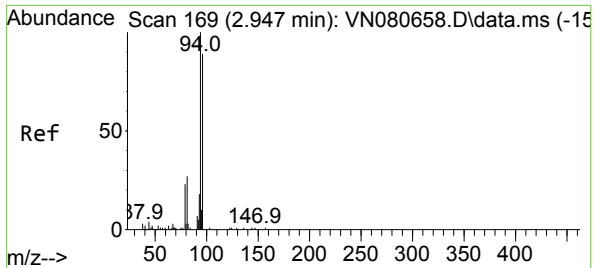
Tgt Ion:168 Resp: 156963  
 Ion Ratio Lower Upper  
 168 100  
 99 73.4 53.0 79.6



#3  
 Chloromethane  
 Concen: 0.534 ug/l  
 RT: 2.359 min Scan# 69  
 Delta R.T. 0.000 min  
 Lab File: VN080707.D  
 Acq: 12 Jan 2024 22:04

Tgt Ion: 50 Resp: 3397  
 Ion Ratio Lower Upper  
 50 100  
 52 26.3 26.5 39.7#

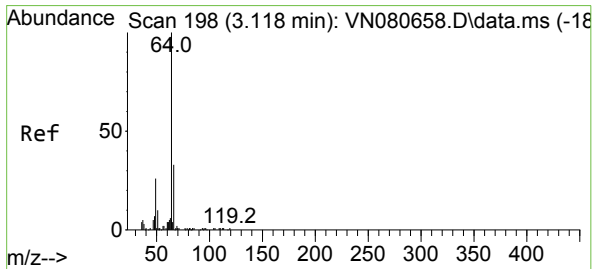
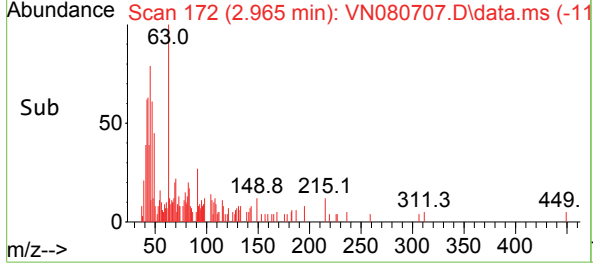
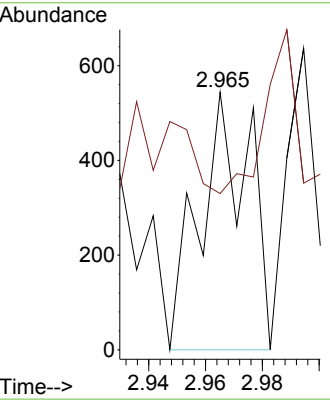
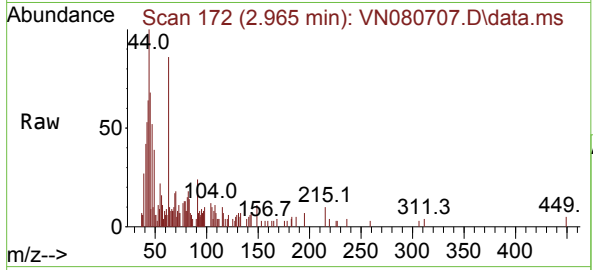




#5  
 Bromomethane  
 Concen: 0.741 ug/l  
 RT: 2.965 min Scan# 11  
 Delta R.T. 0.018 min  
 Lab File: VN080707.D  
 Acq: 12 Jan 2024 22:04

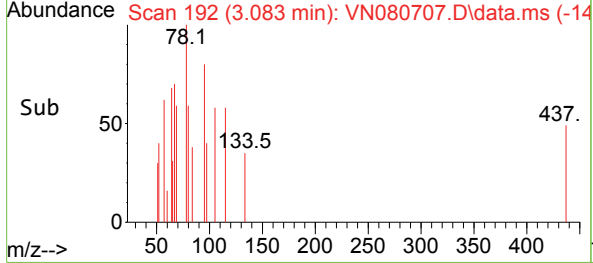
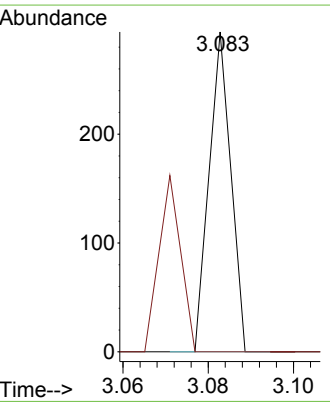
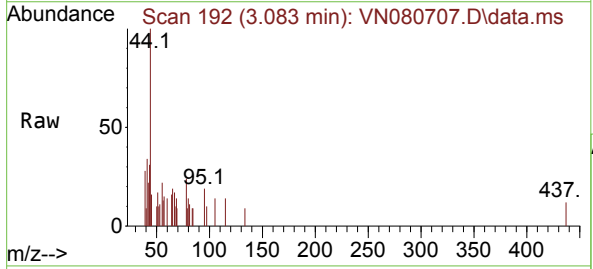
Instrument :  
 MSVOA\_N  
 ClientSampleId :

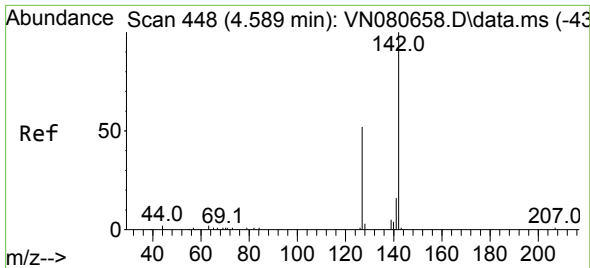
Tgt Ion: 94 Resp: 652  
 Ion Ratio Lower Upper  
 94 100  
 96 0.0 73.1 109.7#



#6  
 Chloroethane  
 Concen: Below Cal  
 RT: 3.083 min Scan# 192  
 Delta R.T. -0.035 min  
 Lab File: VN080707.D  
 Acq: 12 Jan 2024 22:04

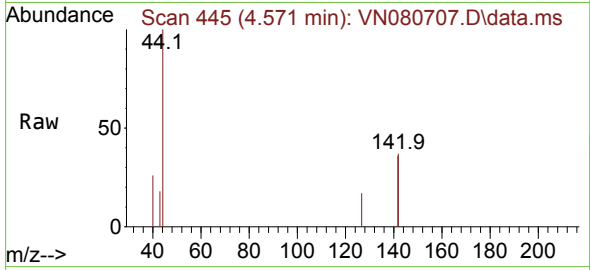
Tgt Ion: 64 Resp: 104  
 Ion Ratio Lower Upper  
 64 100  
 66 0.0 25.4 38.2#



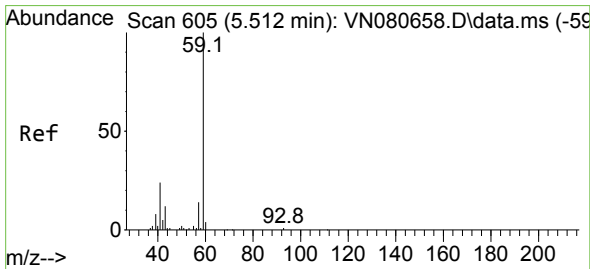
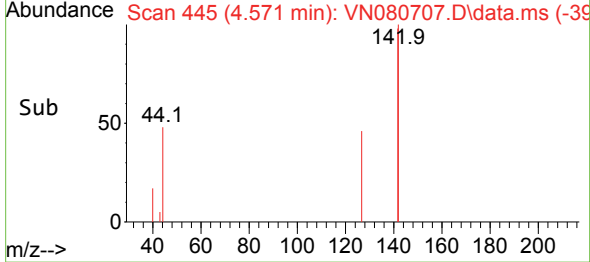
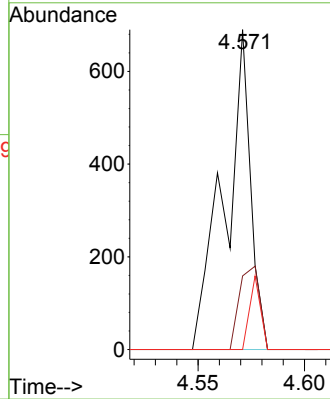


#10  
 Methyl Iodide  
 Concen: 0.333 ug/l  
 RT: 4.571 min Scan# 445  
 Delta R.T. -0.018 min  
 Lab File: VN080707.D  
 Acq: 12 Jan 2024 22:04

Instrument :  
 MSVOA\_N  
 ClientSampleId :

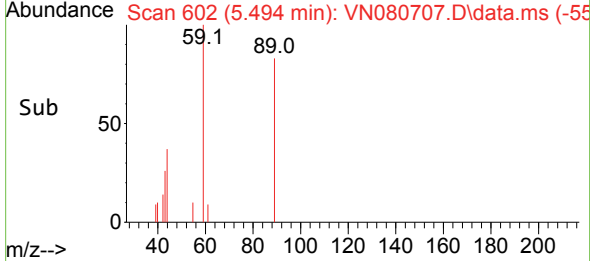
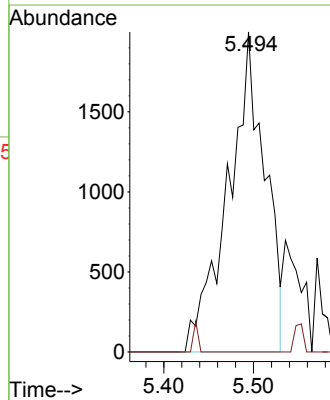
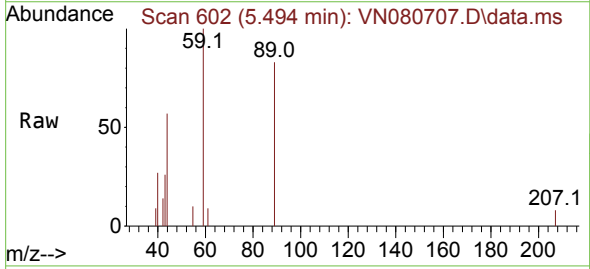


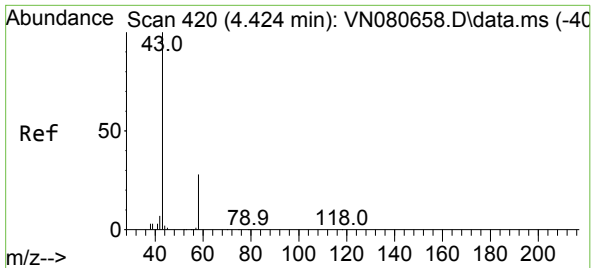
Tgt Ion:142 Resp: 580  
 Ion Ratio Lower Upper  
 142 100  
 127 23.0 37.6 56.4#  
 141 0.0 11.4 17.0#



#11  
 Tert butyl alcohol  
 Concen: 12.219 ug/l  
 RT: 5.494 min Scan# 602  
 Delta R.T. -0.018 min  
 Lab File: VN080707.D  
 Acq: 12 Jan 2024 22:04

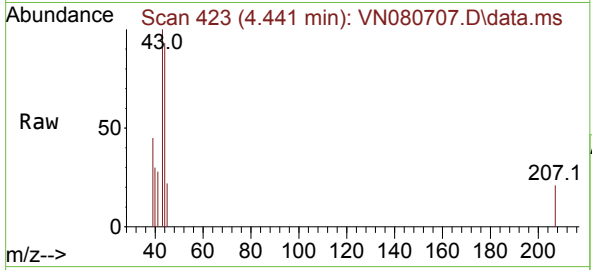
Tgt Ion: 59 Resp: 5696  
 Ion Ratio Lower Upper  
 59 100  
 57 0.0 8.2 12.4#



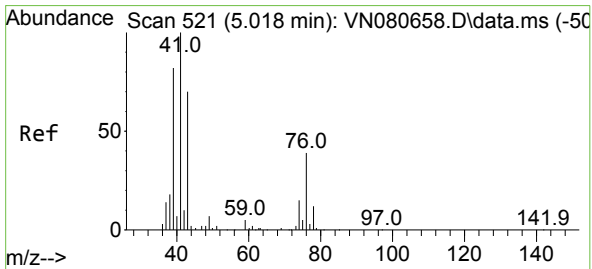
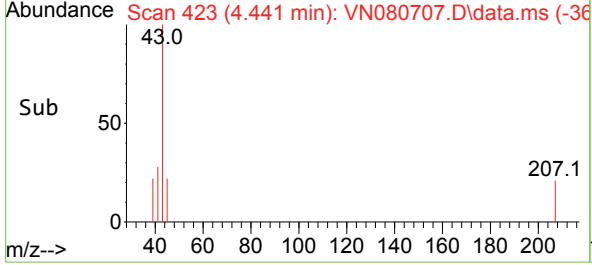
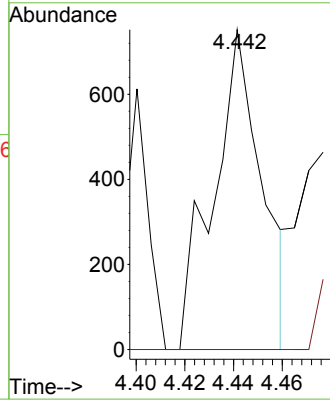


#16  
 Acetone  
 Concen: 1.154 ug/l  
 RT: 4.441 min Scan# 41  
 Delta R.T. 0.018 min  
 Lab File: VN080707.D  
 Acq: 12 Jan 2024 22:04

Instrument :  
 MSVOA\_N  
 ClientSampleId :

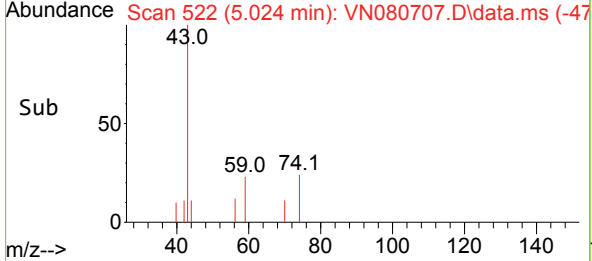
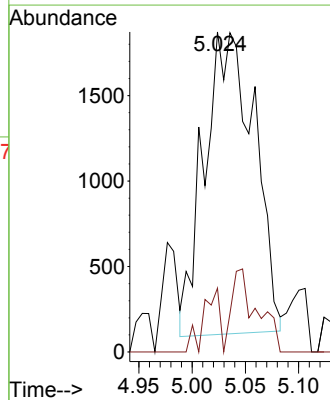
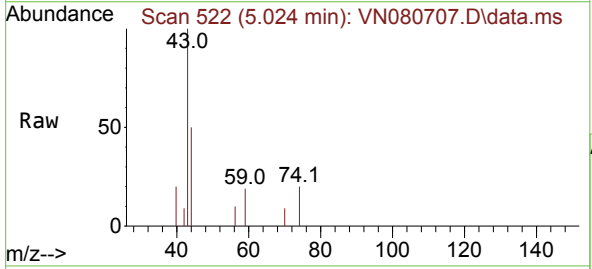


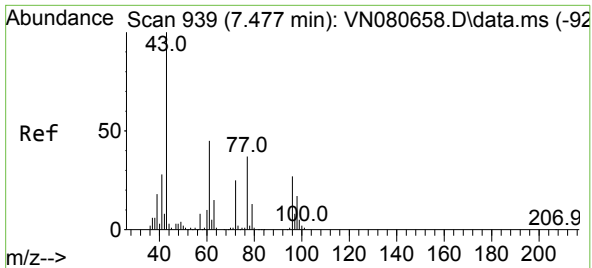
Tgt Ion: 43 Resp: 1044  
 Ion Ratio Lower Upper  
 43 100  
 58 0.0 28.0 42.0#



#18  
 Methyl Acetate  
 Concen: 2.140 ug/l  
 RT: 5.024 min Scan# 522  
 Delta R.T. 0.006 min  
 Lab File: VN080707.D  
 Acq: 12 Jan 2024 22:04

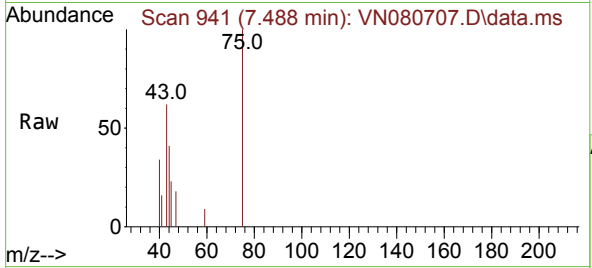
Tgt Ion: 43 Resp: 5766  
 Ion Ratio Lower Upper  
 43 100  
 74 6.8 26.2 39.4#



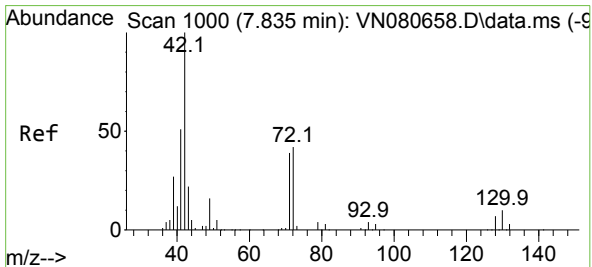
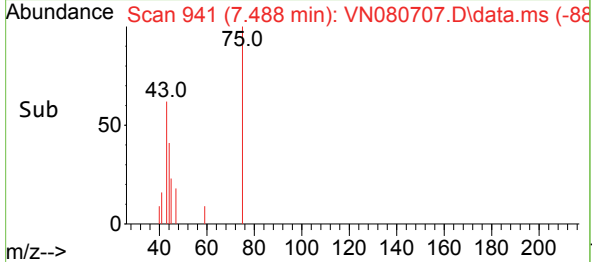
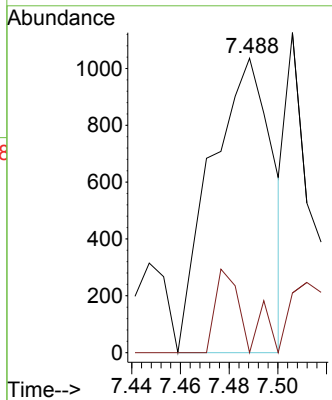


#25  
 2-Butanone  
 Concen: 1.108 ug/l  
 RT: 7.488 min Scan# 941  
 Delta R.T. 0.012 min  
 Lab File: VN080707.D  
 Acq: 12 Jan 2024 22:04

Instrument :  
 MSVOA\_N  
 ClientSampleId :

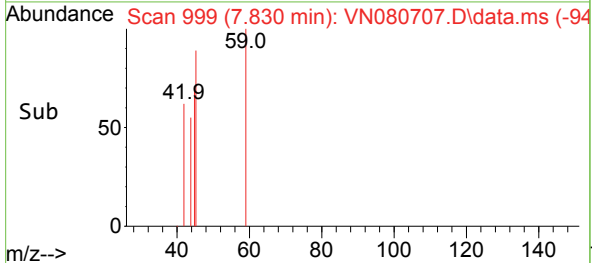
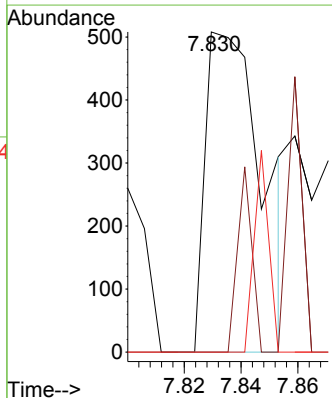
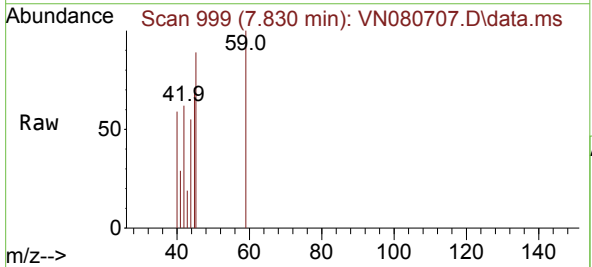


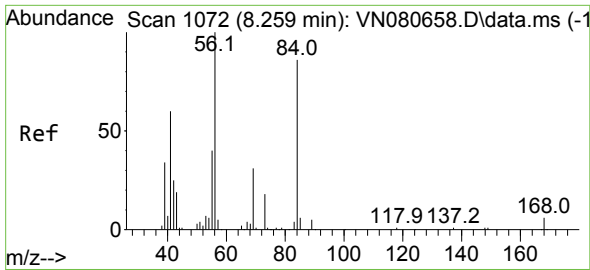
Tgt Ion: 43 Resp: 1813  
 Ion Ratio Lower Upper  
 43 100  
 72 0.0 30.2 45.2#



#29  
 Tetrahydrofuran  
 Concen: 0.644 ug/l  
 RT: 7.830 min Scan# 999  
 Delta R.T. -0.006 min  
 Lab File: VN080707.D  
 Acq: 12 Jan 2024 22:04

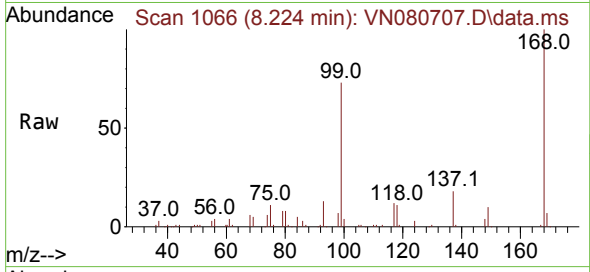
Tgt Ion: 42 Resp: 710  
 Ion Ratio Lower Upper  
 42 100  
 72 14.6 49.8 74.6#  
 71 15.9 47.4 71.2#



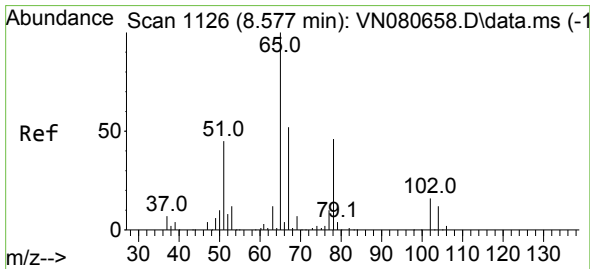
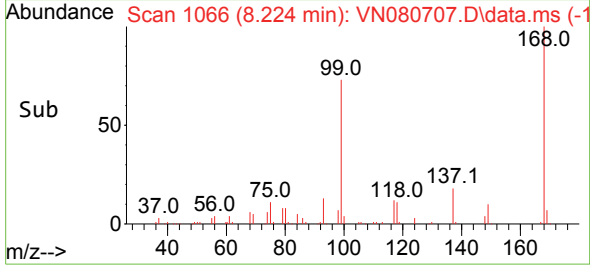
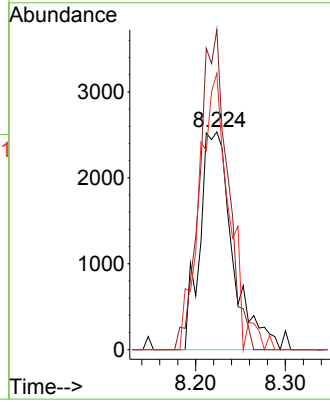


#31  
 Cyclohexane  
 Concen: 1.512 ug/l  
 RT: 8.224 min Scan# 1066  
 Delta R.T. -0.035 min  
 Lab File: VN080707.D  
 Acq: 12 Jan 2024 22:04

Instrument : MSVOA\_N  
 ClientSampleId :

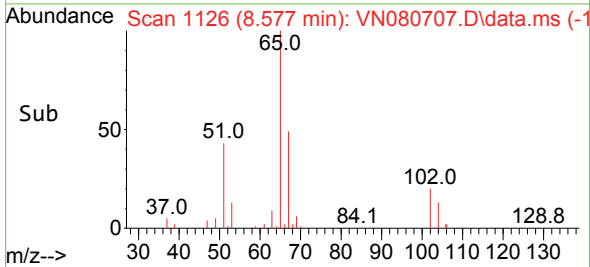
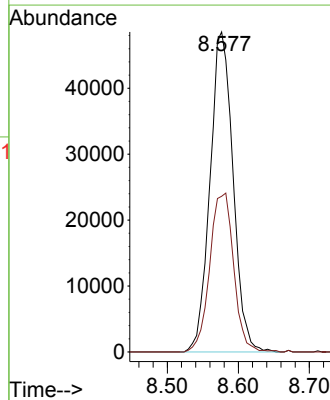
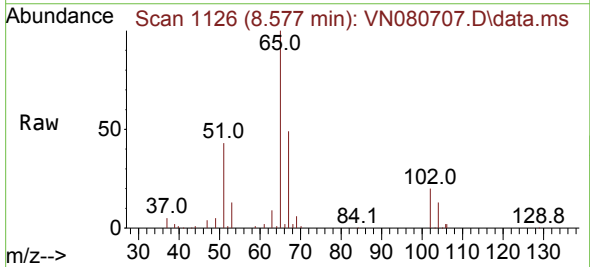


Tgt Ion: 56 Resp: 6441  
 Ion Ratio Lower Upper  
 56 100  
 69 147.0 26.8 40.2#  
 84 126.9 81.8 122.6#

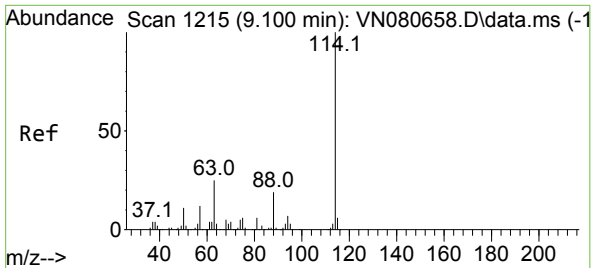


#33  
 1,2-Dichloroethane-d4  
 Concen: 39.660 ug/l  
 RT: 8.577 min Scan# 1126  
 Delta R.T. -0.000 min  
 Lab File: VN080707.D  
 Acq: 12 Jan 2024 22:04

Tgt Ion: 65 Resp: 109319  
 Ion Ratio Lower Upper  
 65 100  
 67 51.6 0.0 106.6

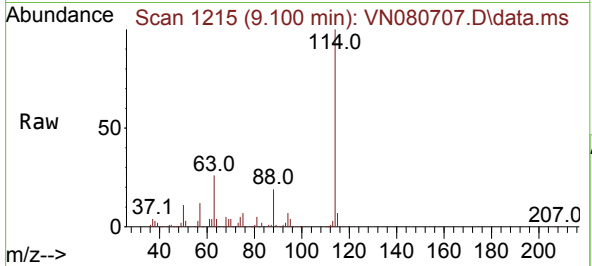






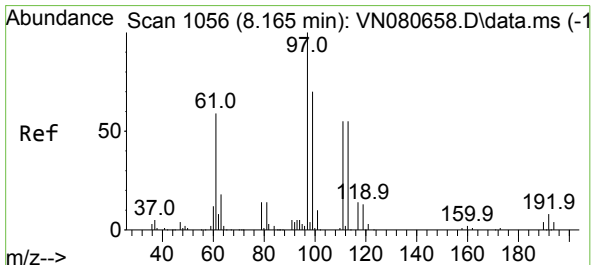
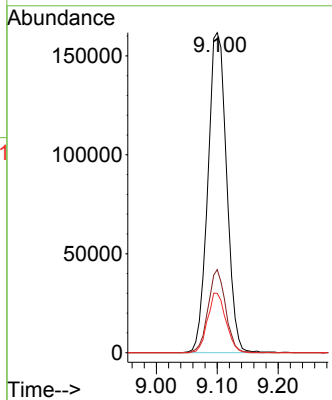
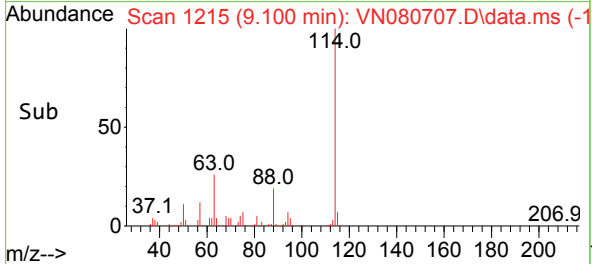
#34  
 1,4-Difluorobenzene  
 Concen: 50.000 ug/l  
 RT: 9.100 min Scan# 11  
 Delta R.T. 0.000 min  
 Lab File: VN080707.D  
 Acq: 12 Jan 2024 22:04

Instrument :  
 MSVOA\_N  
 ClientSampleId :

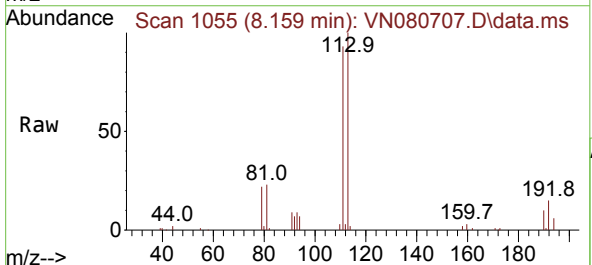


Tgt Ion:114 Resp: 346246

Ion	Ratio	Lower	Upper
114	100		
63	26.0	0.0	36.4
88	18.5	0.0	30.6

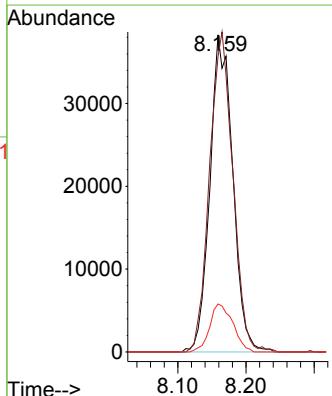
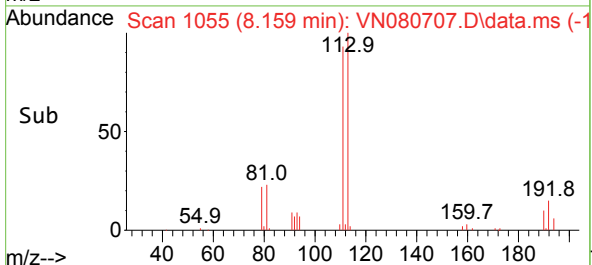


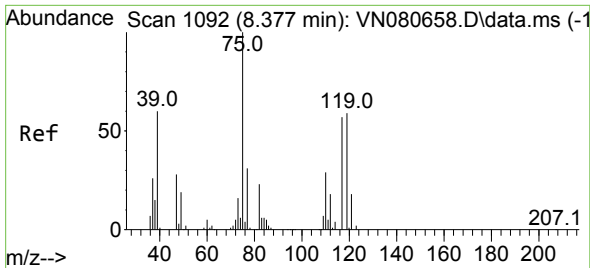
#35  
 Dibromofluoromethane  
 Concen: 45.400 ug/l  
 RT: 8.159 min Scan# 1055  
 Delta R.T. -0.006 min  
 Lab File: VN080707.D  
 Acq: 12 Jan 2024 22:04



Tgt Ion:113 Resp: 89315

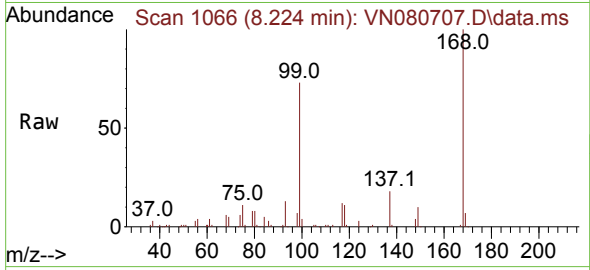
Ion	Ratio	Lower	Upper
113	100		
111	102.7	82.6	123.8
192	15.3	12.7	19.1



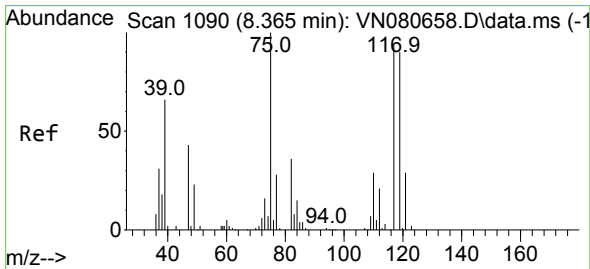
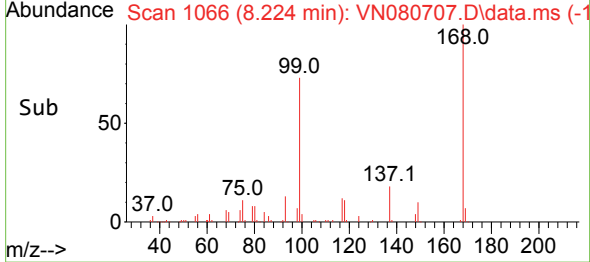
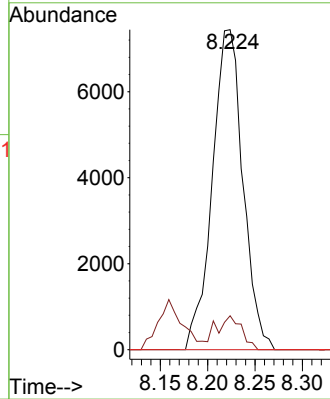


#36  
 1,1-Dichloropropene  
 Concen: 4.160 ug/l  
 RT: 8.224 min Scan# 1066  
 Delta R.T. -0.153 min  
 Lab File: VN080707.D  
 Acq: 12 Jan 2024 22:04

Instrument : MSVOA\_N  
 ClientSampleId :

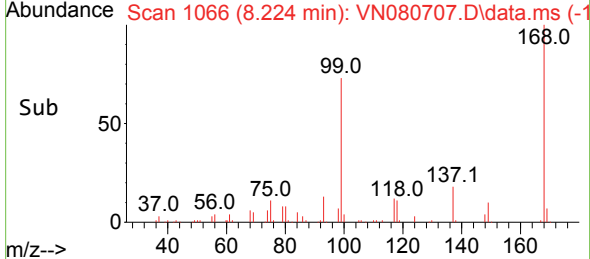
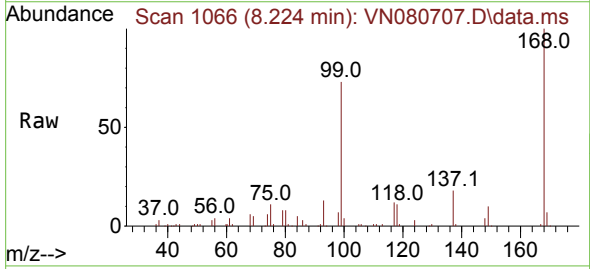
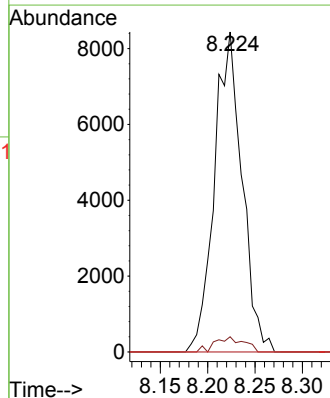


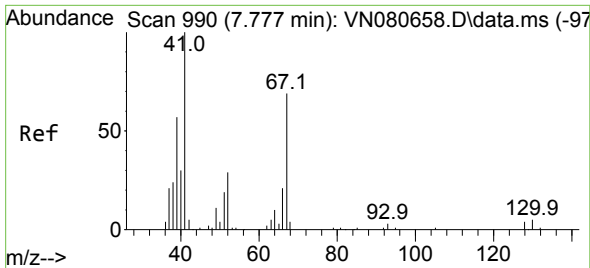
Tgt Ion: 75 Resp: 16765  
 Ion Ratio Lower Upper  
 75 100  
 110 8.5 19.1 57.3#  
 77 0.0 25.0 37.4#



#38  
 Carbon Tetrachloride  
 Concen: 4.726 ug/l  
 RT: 8.224 min Scan# 1066  
 Delta R.T. -0.141 min  
 Lab File: VN080707.D  
 Acq: 12 Jan 2024 22:04

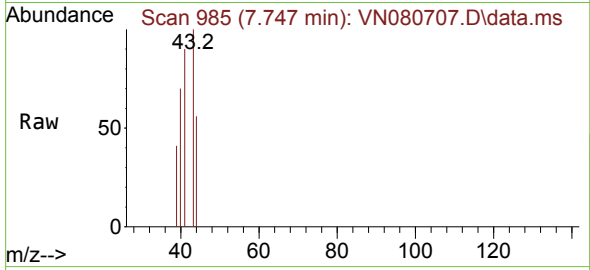
Tgt Ion: 117 Resp: 17099  
 Ion Ratio Lower Upper  
 117 100  
 119 4.7 77.3 115.9#  
 121 0.0 23.3 34.9#





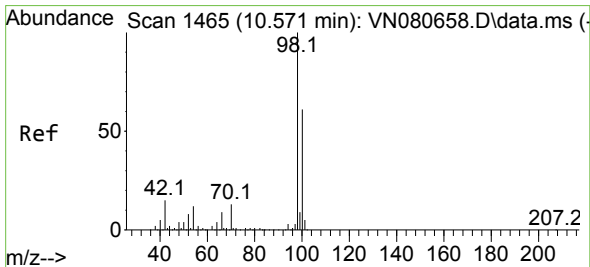
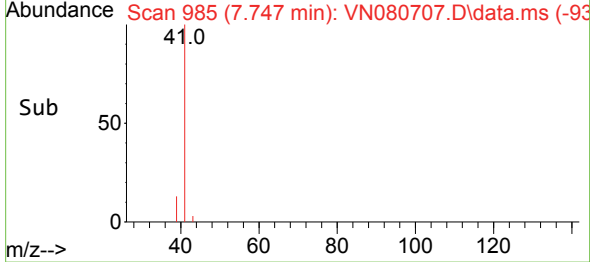
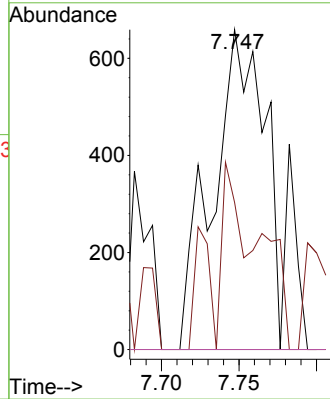
#41  
 Methacrylonitrile  
 Concen: 0.678 ug/l  
 RT: 7.747 min Scan# 91  
 Delta R.T. -0.029 min  
 Lab File: VN080707.D  
 Acq: 12 Jan 2024 22:04

Instrument :  
 MSVOA\_N  
 ClientSampleId :



Tgt Ion: 41 Resp: 1537

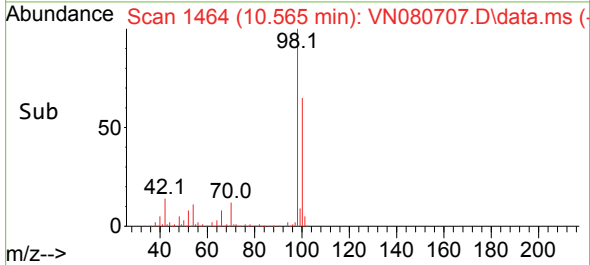
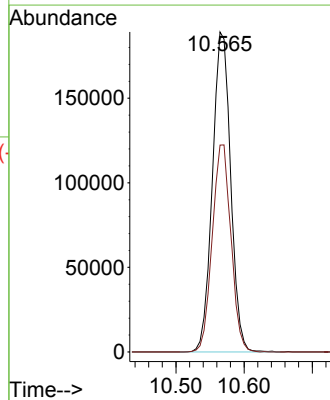
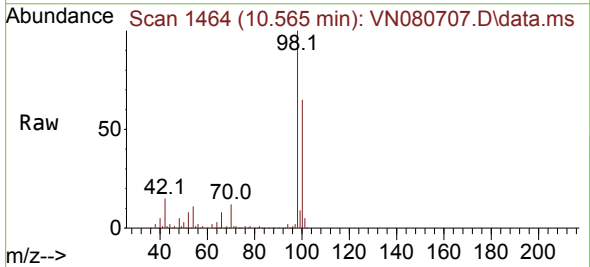
Ion	Ratio	Lower	Upper
41	100		
39	24.9	42.6	64.0#
67	0.0	77.5	116.3#
52	0.0	28.9	43.3#

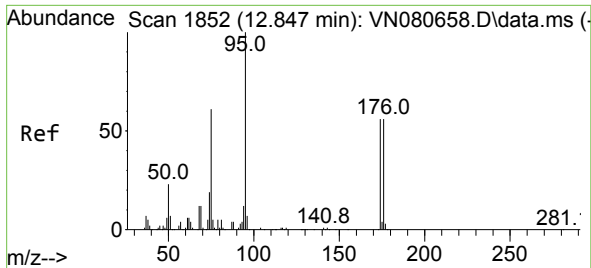


#50  
 Toluene-d8  
 Concen: 46.974 ug/l  
 RT: 10.565 min Scan# 1464  
 Delta R.T. -0.006 min  
 Lab File: VN080707.D  
 Acq: 12 Jan 2024 22:04

Tgt Ion: 98 Resp: 352368

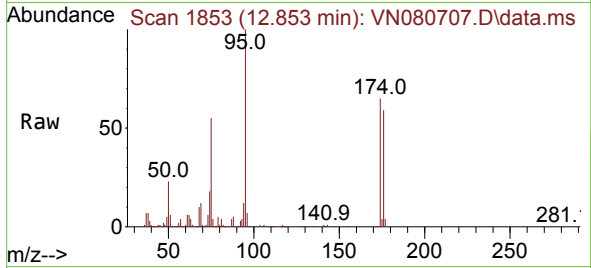
Ion	Ratio	Lower	Upper
98	100		
100	66.3	52.0	78.0



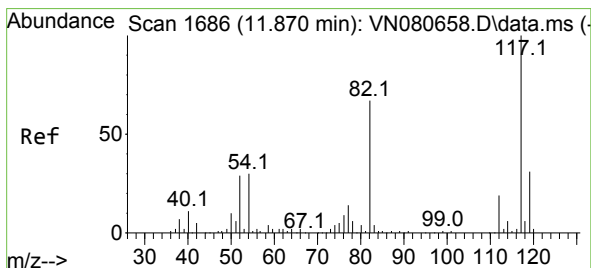
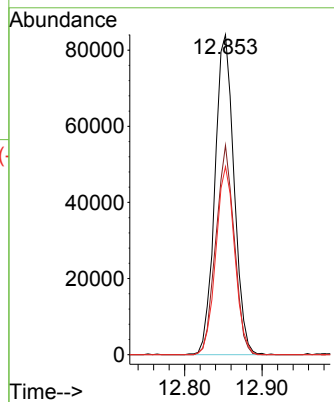
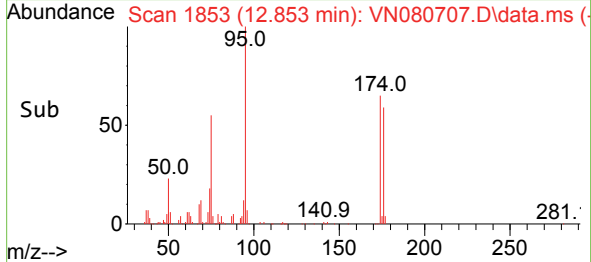


#62  
 4-Bromofluorobenzene  
 Concen: 50.063 ug/l  
 RT: 12.853 min Scan# 1853  
 Delta R.T. 0.006 min  
 Lab File: VN080707.D  
 Acq: 12 Jan 2024 22:04

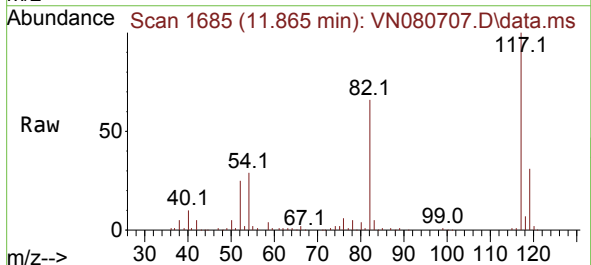
Instrument :  
 MSVOA\_N  
 ClientSampleId :



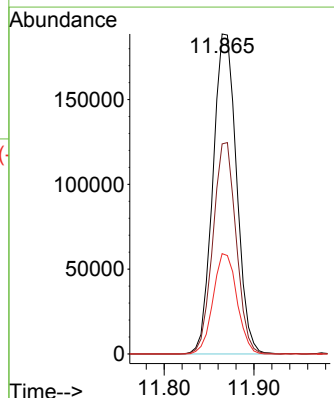
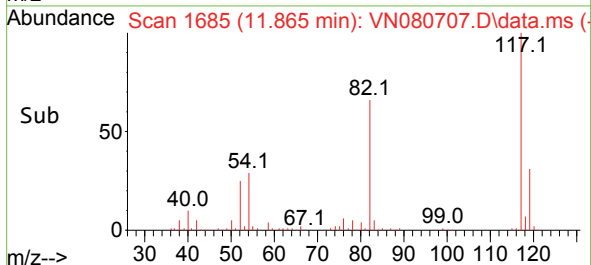
Tgt Ion: 95 Resp: 144011  
 Ion Ratio Lower Upper  
 95 100  
 174 62.9 0.0 143.8  
 176 58.0 0.0 135.8

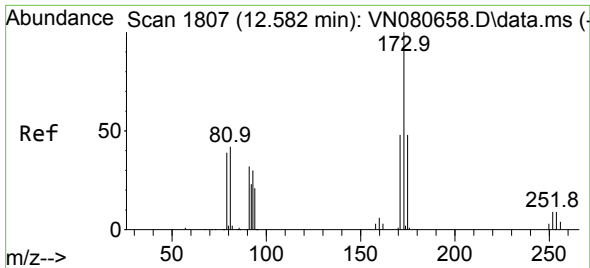


#63  
 Chlorobenzene-d5  
 Concen: 50.000 ug/l  
 RT: 11.865 min Scan# 1685  
 Delta R.T. -0.006 min  
 Lab File: VN080707.D  
 Acq: 12 Jan 2024 22:04



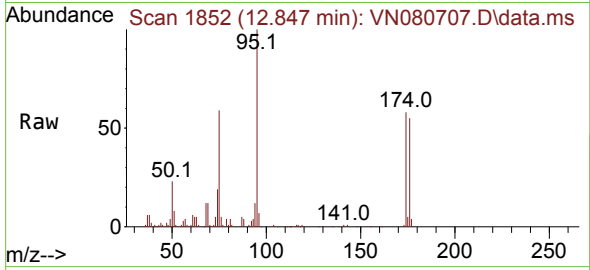
Tgt Ion: 117 Resp: 345286  
 Ion Ratio Lower Upper  
 117 100  
 82 65.6 44.0 66.0  
 119 31.4 25.6 38.4



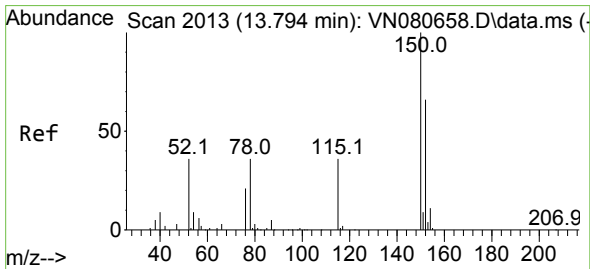
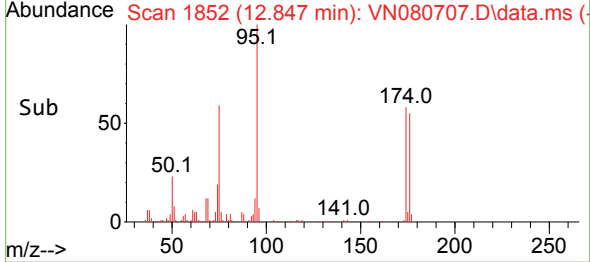
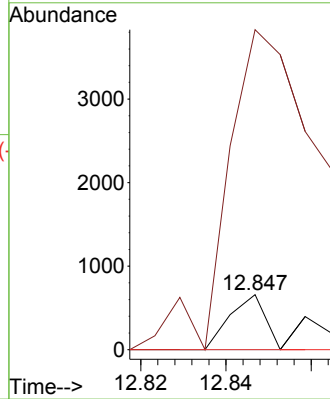


#71  
 Bromoform  
 Concen: 0.206 ug/l  
 RT: 12.847 min Scan# 1807  
 Delta R.T. 0.265 min  
 Lab File: VN080707.D  
 Acq: 12 Jan 2024 22:04

Instrument :  
 MSVOA\_N  
 ClientSampleId :

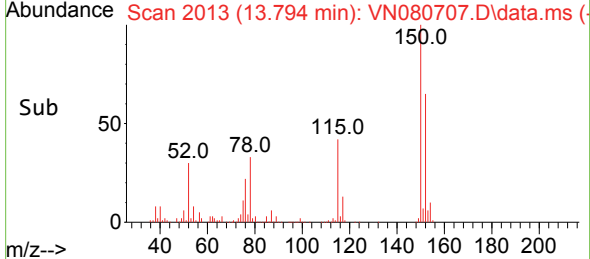
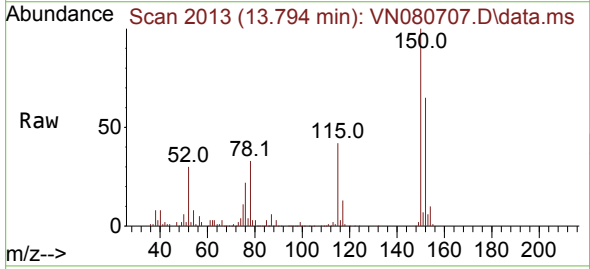
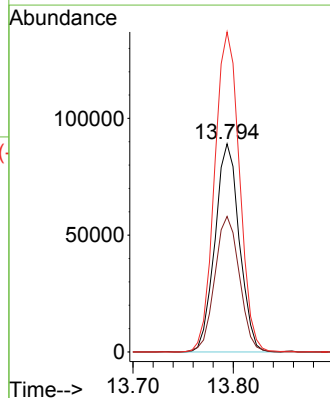


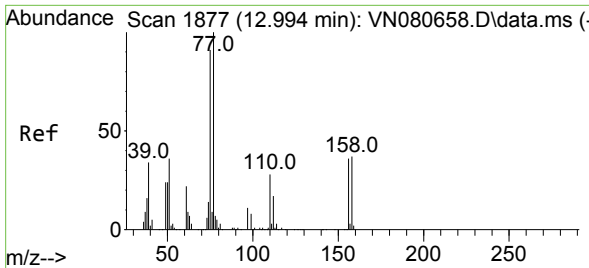
Tgt Ion:173 Resp: 380  
 Ion Ratio Lower Upper  
 173 100  
 175 1227.1 24.3 73.0#  
 254 0.0 0.0 0.0



#72  
 1,4-Dichlorobenzene-d4  
 Concen: 50.000 ug/l  
 RT: 13.794 min Scan# 2013  
 Delta R.T. -0.000 min  
 Lab File: VN080707.D  
 Acq: 12 Jan 2024 22:04

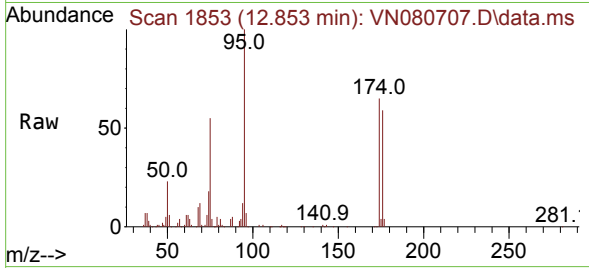
Tgt Ion:152 Resp: 150568  
 Ion Ratio Lower Upper  
 152 100  
 115 66.0 32.3 96.8  
 150 156.6 0.0 355.8



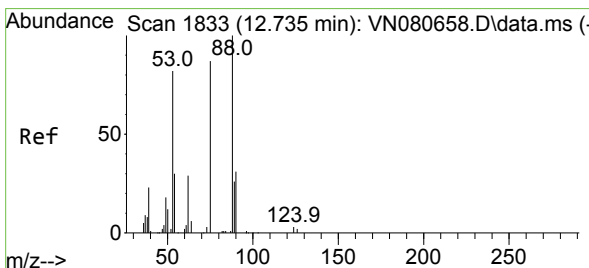
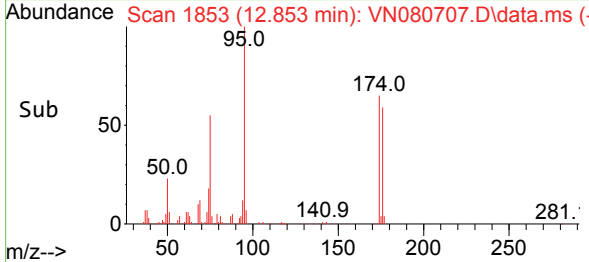
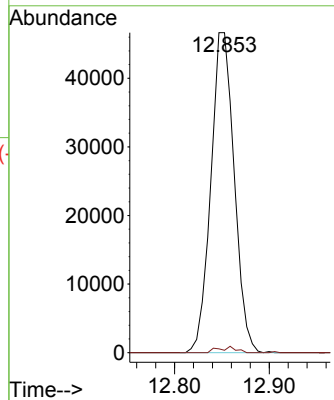


#76  
 1,2,3-Trichloropropane  
 Concen: 17.239 ug/l  
 RT: 12.853 min Scan# 1853  
 Delta R.T. -0.141 min  
 Lab File: VN080707.D  
 Acq: 12 Jan 2024 22:04

Instrument : MSVOA\_N  
 ClientSampleId :

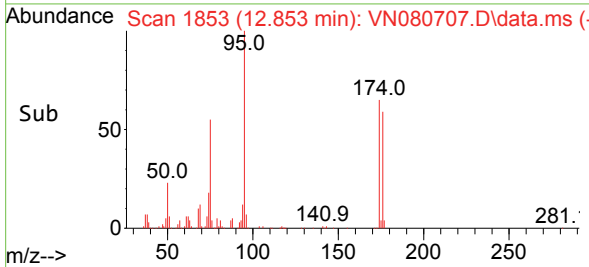
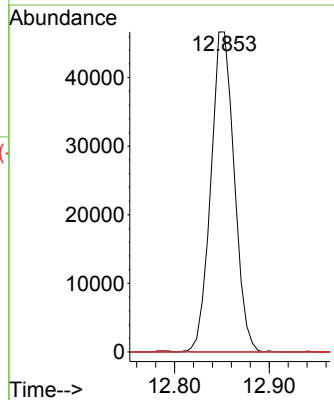
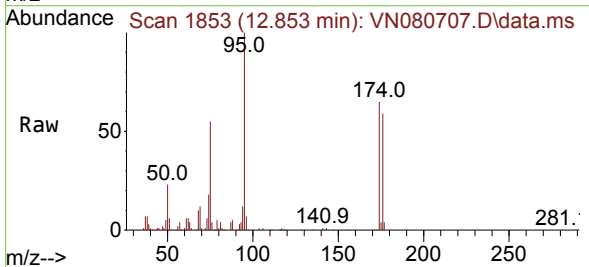


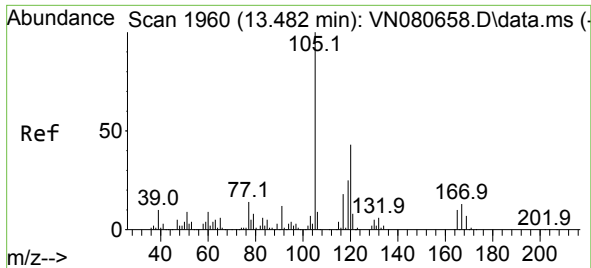
Tgt Ion: 75 Resp: 80038  
 Ion Ratio Lower Upper  
 75 100  
 77 0.7 84.5 253.5#



#81  
 trans-1,4-Dichloro-2-butene  
 Concen: 40.639 ug/l  
 RT: 12.853 min Scan# 1853  
 Delta R.T. 0.118 min  
 Lab File: VN080707.D  
 Acq: 12 Jan 2024 22:04

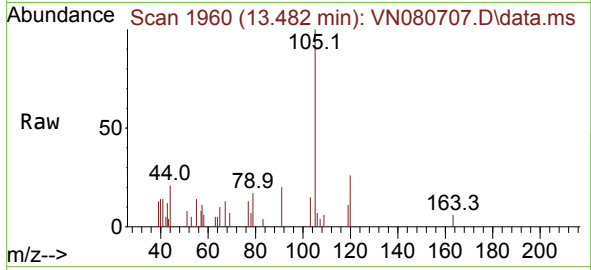
Tgt Ion: 75 Resp: 80038  
 Ion Ratio Lower Upper  
 75 100  
 53 0.0 67.4 101.2#  
 89 0.0 38.8 58.2#



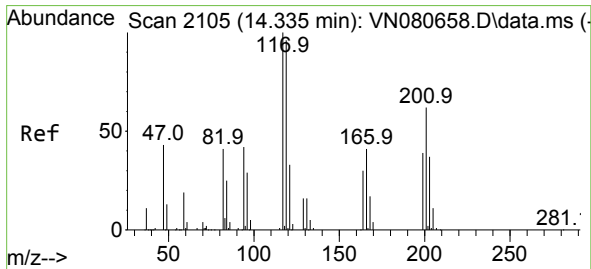
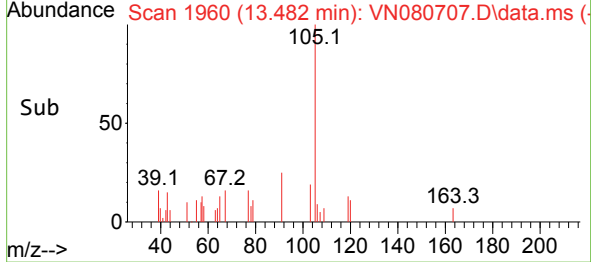
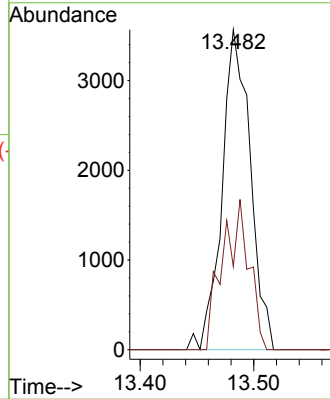


#84  
 1,2,4-Trimethylbenzene  
 Concen: 0.525 ug/l  
 RT: 13.482 min Scan# 1960  
 Delta R.T. -0.000 min  
 Lab File: VN080707.D  
 Acq: 12 Jan 2024 22:04

Instrument :  
 MSVOA\_N  
 ClientSampleId :

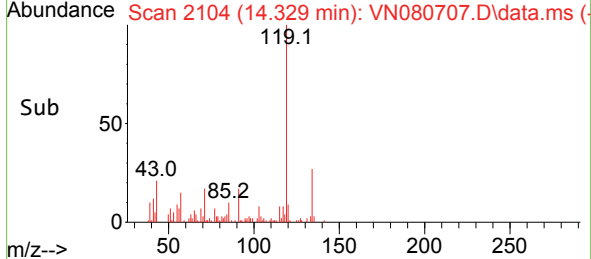
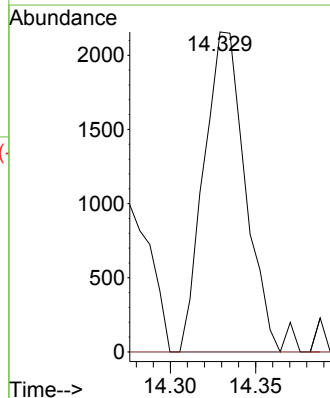
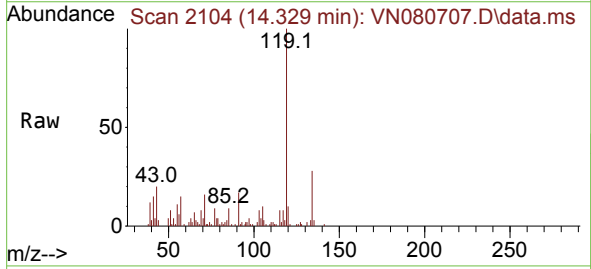


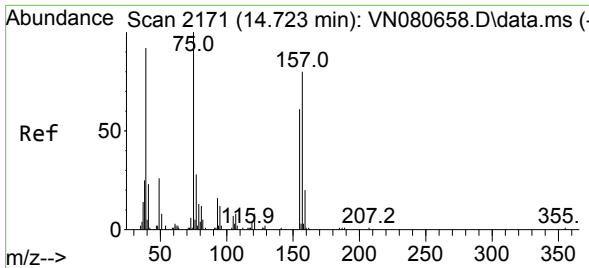
Tgt Ion:105 Resp: 6164  
 Ion Ratio Lower Upper  
 105 100  
 120 43.8 22.0 66.0



#90  
 Hexachloroethane  
 Concen: 1.828 ug/l  
 RT: 14.329 min Scan# 2104  
 Delta R.T. -0.006 min  
 Lab File: VN080707.D  
 Acq: 12 Jan 2024 22:04

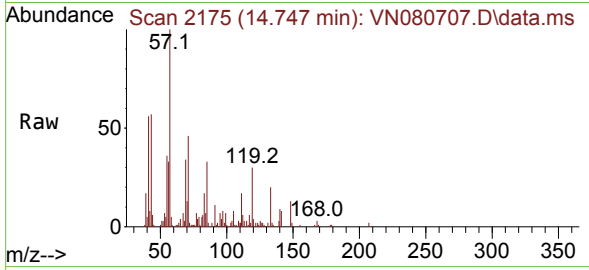
Tgt Ion:117 Resp: 3628  
 Ion Ratio Lower Upper  
 117 100  
 201 0.0 29.3 88.0#





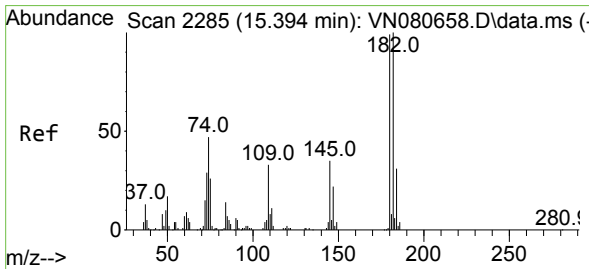
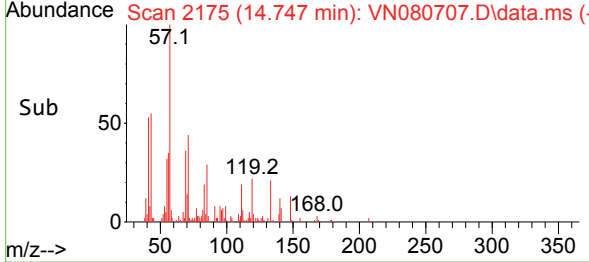
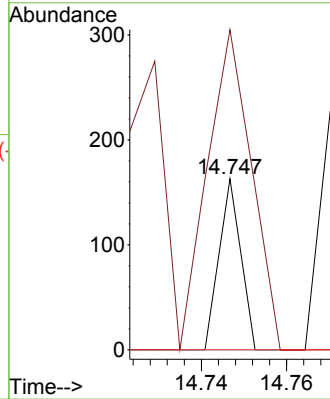
#92  
 1,2-Dibromo-3-Chloropropane  
 Concen: Below Cal  
 RT: 14.747 min Scan# 2171  
 Delta R.T. 0.024 min  
 Lab File: VN080707.D  
 Acq: 12 Jan 2024 22:04

Instrument : MSVOA\_N  
 ClientSampleId :



Tgt Ion: 75 Resp: 57

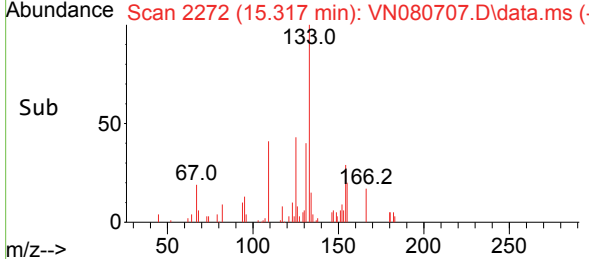
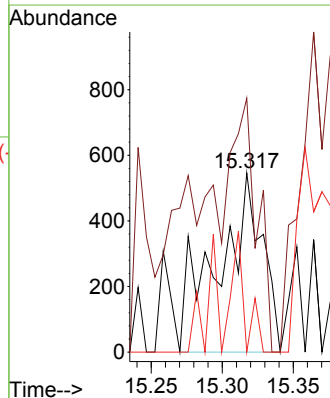
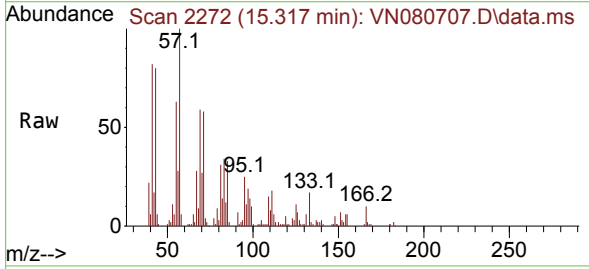
Ion	Ratio	Lower	Upper
75	100		
155	386.0	39.1	117.2#
157	0.0	50.3	150.9#



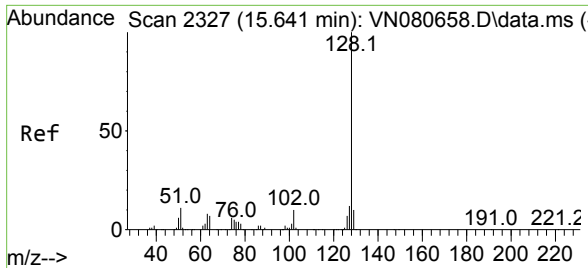
#93  
 1,2,4-Trichlorobenzene  
 Concen: 0.441 ug/l  
 RT: 15.317 min Scan# 2272  
 Delta R.T. -0.077 min  
 Lab File: VN080707.D  
 Acq: 12 Jan 2024 22:04

Tgt Ion: 180 Resp: 1176

Ion	Ratio	Lower	Upper
180	100		
182	85.7	46.1	138.2
145	20.9	16.6	49.8

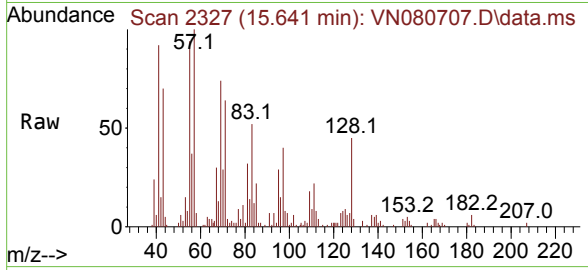






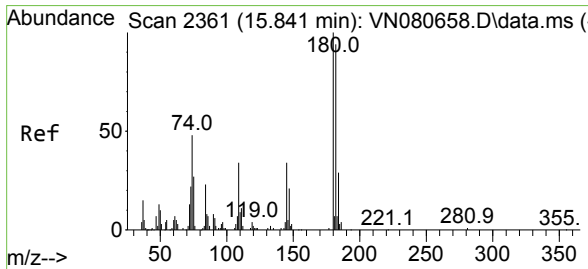
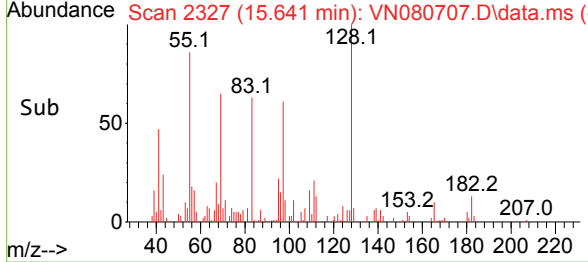
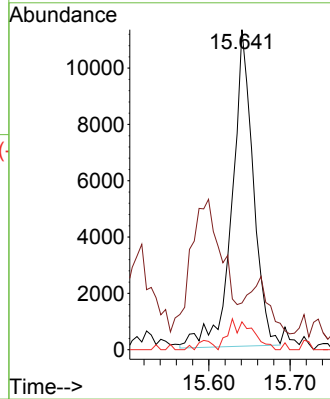
#95  
 Naphthalene  
 Concen: 1.940 ug/l  
 RT: 15.641 min Scan# 21  
 Delta R.T. -0.000 min  
 Lab File: VN080707.D  
 Acq: 12 Jan 2024 22:04

Instrument :  
 MSVOA\_N  
 ClientSampleId :



Tgt Ion:128 Resp: 20356

Ion	Ratio	Lower	Upper
128	100		
127	0.0	10.0	15.0#
129	4.5	8.7	13.1#



#96  
 1,2,3-Trichlorobenzene  
 Concen: 1.223 ug/l  
 RT: 15.811 min Scan# 2356  
 Delta R.T. -0.029 min  
 Lab File: VN080707.D  
 Acq: 12 Jan 2024 22:04

Tgt Ion:180 Resp: 3156

Ion	Ratio	Lower	Upper
180	100		
182	55.6	46.2	138.6
145	18.5	17.5	52.6

