

Data Path : Z:\voasrv\HPCHEM1\MSVOA\_N\Data\VN011321\  
 Data File : VN065494.D  
 Acq On : 13 Jan 2021 18:19  
 Operator : JC/MD  
 Sample : VSTDICCC020  
 Misc : 5.00mL/MSVOA\_N/WATER  
 ALS Vial : 4 Sample Multiplier: 1

Instrument :  
 MSVOA\_N  
 ClientSampled :  
 VSTDICCC020

Quant Time: Jan 14 03:56:08 2021  
 Quant Method : Z:\voasrv\HPCHEM1\MSVOA\_N\methods\624N011321W.M  
 Quant Title : METHOD 624 VOLATILE ORGANIC ANALYSIS  
 QLast Update : Thu Jan 14 03:54:03 2021  
 Response via : Initial Calibration

Compound	R.T.	QIon	Response	Conc	Units	Dev(Min)
-----						
Internal Standards						
1) Bromochloromethane	7.155	128	41184	30.00	ug/l	0.00
28) 1,4-Difluorobenzene	8.553	114	218727	30.00	ug/l	0.00
57) Chlorobenzene-d5	11.379	117	200519	30.00	ug/l	0.00
System Monitoring Compounds						
27) 1,2-Dichloroethane-d4	7.990	65	78796	27.10	ug/l	0.00
Spiked Amount	30.000	Range 91 - 110	Recovery =	90.33%#		
60) 4-Bromofluorobenzene	12.376	95	88315	28.03	ug/l	0.00
Spiked Amount	30.000	Range 63 - 112	Recovery =	93.43%		
63) Toluene-d8	10.061	98	265063	29.86	ug/l	0.00
Spiked Amount	30.000	Range 91 - 112	Recovery =	99.53%		
Target Compounds						
						Qvalue
2) Dichlorodifluoromethane	1.846	85	37162	16.96	ug/l	100
3) Chloromethane	2.055	50	46315	18.12	ug/l	100
4) Vinyl Chloride	2.180	62	49767	18.48	ug/l	100
5) Bromomethane	2.534	94	37244	18.93	ug/l	100
6) Chloroethane	2.682	64	32740	18.86	ug/l	100
7) Trichlorofluoromethane	2.997	101	68145	17.63	ug/l	100
8) Diethyl Ether	3.386	74	28150	19.49	ug/l	100
9) 1,1,2-Trichlorotrifluo...	3.724	101	41119	18.99	ug/l	100
10) 1,1-Dichloroethene	3.701	96	41234	18.73	ug/l	100
11) Methyl Iodide	3.913	142	64724	19.44	ug/l	100
12) Methyl Acetate	4.293	43	41629	18.22	ug/l	100
13) Acrolein	3.579	56	33743	102.99	ug/l	100
14) Acrylonitrile	4.949	53	93653	88.49	ug/l	100
15) Acetone	3.791	58	29334	90.48	ug/l	100
16) Carbon Disulfide	4.007	76	96851	15.72	ug/l	100
17) Allyl chloride	4.280	41	57008	15.26	ug/l	100
18) Methylene Chloride	4.508	84	45353	18.04	ug/l	100
19) trans-1,2-Dichloroethene	4.994	96	41366	17.34	ug/l	100
20) Diisopropyl ether	5.917	45	123195	16.25	ug/l	100
21) 1,1-Dichloroethane	5.804	63	73728	17.13	ug/l	100
22) cis-1,2-Dichloroethene	6.788	96	47191	17.25	ug/l	100
23) tert-Butyl Alcohol	4.782	59	29234	67.90	ug/l #	100
24) Methyl tert-Butyl Ether	5.010	73	119525	16.03	ug/l	100
25) Chloroform	7.331	83	75436	17.03	ug/l	100
26) Cyclohexane	7.611	56	59583	15.95	ug/l #	100
29) 1,1-Dichloropropene	7.756	75	54704	17.11	ug/l	100
30) 2-Butanone	6.804	43	117096	81.93	ug/l	100
31) 2,2-Dichloropropane	6.778	77	57565	15.09	ug/l	100
32) 1,1,1-Trichloroethane	7.531	97	63413	16.57	ug/l	100
33) Carbon Tetrachloride	7.736	117	54754	16.30	ug/l	100
34) Benzene	8.003	78	171848	18.01	ug/l	100
35) Methacrylonitrile	7.138	41	24958	18.45	ug/l	100
36) 1,2-Dichloroethane	8.090	62	58894	16.91	ug/l	100
37) Trichloroethene	8.801	130	50720	18.48	ug/l	100
38) Methylcyclohexane	9.045	83	62310	16.11	ug/l	100
39) 1,2-Dichloropropane	9.087	63	45176	18.15	ug/l	100
40) Dibromomethane	9.177	93	30293	18.06	ug/l	100
41) Bromodichloromethane	9.373	83	57132	16.31	ug/l	100
42) Vinyl Acetate	5.856	43	494089	79.53	ug/l	100
43) Ethyl Acetate	6.897	43	47647	16.76	ug/l	100

Data Path : Z:\voasrv\HPCHEM1\MSVOA\_N\Data\VN011321\  
 Data File : VN065494.D  
 Acq On : 13 Jan 2021 18:19  
 Operator : JC/MD  
 Sample : VSTDICCC020  
 Misc : 5.00mL/MSVOA\_N/WATER  
 ALS Vial : 4 Sample Multiplier: 1

Instrument :  
 MSVOA\_N  
 ClientSampleId :  
 VSTDICCC020

Quant Time: Jan 14 03:56:08 2021  
 Quant Method : Z:\voasrv\HPCHEM1\MSVOA\_N\methods\624N011321W.M  
 Quant Title : METHOD 624 VOLATILE ORGANIC ANALYSIS  
 QLast Update : Thu Jan 14 03:54:03 2021  
 Response via : Initial Calibration

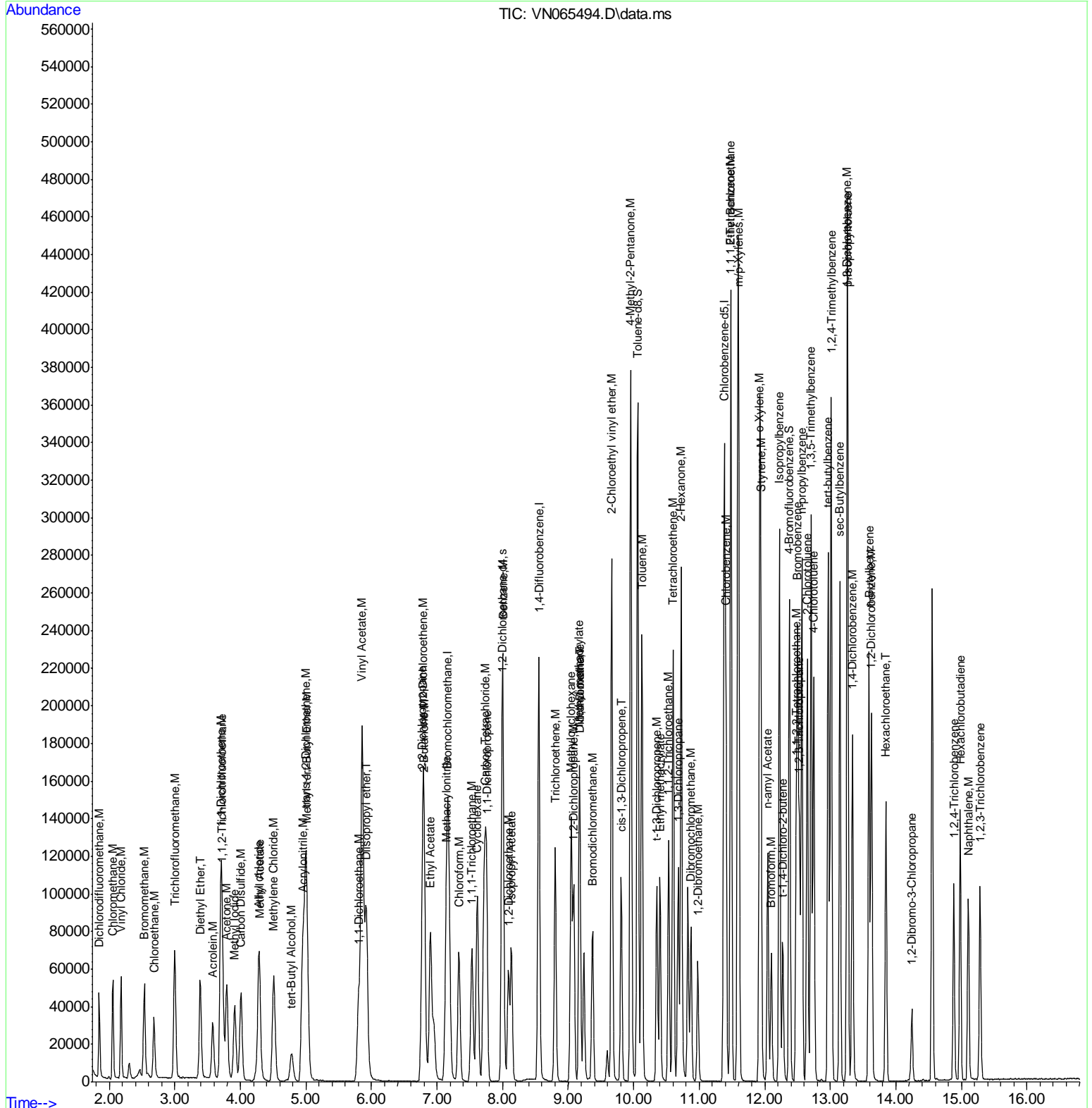
Compound	R.T.	QIon	Response	Conc	Units	Dev(Min)
44) Isopropyl Acetate	8.132	43	81461	15.39	ug/l	100
45) 1,4-Dioxane	9.174	88	11567	290.58	ug/l	100
46) Methyl methacrylate	9.171	41	39185	15.55	ug/l	100
47) n-amy1 Acetate	12.045	43	65595	14.77	ug/l	100
48) t-1,3-Dichloropropene	10.354	75	60427	15.47	ug/l	100
49) cis-1,3-Dichloropropene	9.807	75	68936	16.52	ug/l	100
50) 1,1,2-Trichloroethane	10.534	97	43988	18.52	ug/l	100
51) Ethyl methacrylate	10.402	69	59526	16.36	ug/l	100
52) 1,3-Dichloropropane	10.678	76	72359	18.27	ug/l	100
53) Dibromochloromethane	10.875	129	46234	16.60	ug/l	100
54) 1,2-Dibromoethane	10.977	107	45934	18.07	ug/l	100
55) 2-Chloroethyl vinyl ether	9.666	63	131553	72.75	ug/l	100
56) Bromoform	12.100	173	34905	16.21	ug/l	100
58) 4-Methyl-2-Pentanone	9.955	43	250194	83.11	ug/l	100
59) 2-Hexanone	10.724	43	177259	80.54	ug/l	100
61) Tetrachloroethene	10.601	164	59355	19.55	ug/l	100
62) Toluene	10.125	91	189423	17.82	ug/l	100
64) Chlorobenzene	11.405	112	121838	18.41	ug/l	100
65) 1,1,1,2-Tetrachloroethane	11.479	131	46150	17.77	ug/l	100
66) Ethyl Benzene	11.482	91	202959	17.20	ug/l	100
67) m/p-Xylenes	11.595	106	159069	35.53	ug/l	100
68) o-Xylene	11.920	106	76699	17.71	ug/l	100
69) Styrene	11.939	104	126682	17.41	ug/l	100
70) Isopropylbenzene	12.222	105	200980	17.45	ug/l	100
71) 1,1,2,2-Tetrachloroethane	12.479	83	57737	18.26	ug/l	100
72) 1,2,3-Trichloropropane	12.527	75	76899	24.54	ug/l	63
73) Bromobenzene	12.498	156	57310	18.74	ug/l	100
74) n-propylbenzene	12.566	91	223800	17.12	ug/l	100
75) 2-Chlorotoluene	12.646	91	136499	17.55	ug/l	100
76) 1,3,5-Trimethylbenzene	12.707	105	172299	17.51	ug/l	100
77) t-1,4-Dichloro-2-butene	12.273	75	17700	14.61	ug/l	100
78) 4-Chlorotoluene	12.746	91	136427	17.29	ug/l	100
79) tert-butylbenzene	12.968	119	146516	17.50	ug/l	100
80) 1,2,4-Trimethylbenzene	13.013	105	171631	17.60	ug/l	100
81) sec-Butylbenzene	13.145	105	189831	17.24	ug/l	100
82) p-Isopropyltoluene	13.264	119	174272	17.16	ug/l	100
83) 1,3-Dichlorobenzene	13.257	146	92490	18.25	ug/l	100
84) 1,4-Dichlorobenzene	13.338	146	87309	17.46	ug/l	100
85) n-Butylbenzene	13.588	91	133432	15.64	ug/l	100
86) Hexachloroethane	13.846	117	27734	15.32	ug/l	100
87) 1,2-Dichlorobenzene	13.627	146	92208	18.74	ug/l	100
88) 1,2-Dibromo-3-Chloropr...	14.244	75	9654	15.11	ug/l	100
89) 1,2,4-Trichlorobenzene	14.881	180	39705	15.44	ug/l	97
90) Hexachlorobutadiene	14.981	225	32708	18.84	ug/l	100
91) Naphthalene	15.106	128	92945	13.76	ug/l	100
92) 1,2,3-Trichlorobenzene	15.283	180	40845	16.69	ug/l	100

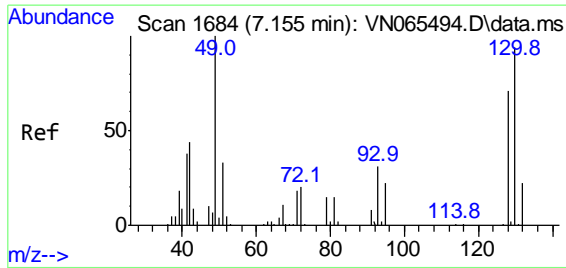
(#) = qualifier out of range (m) = manual integration (+) = signals summed

Data Path : Z:\voasrv\HPCHEM1\MSVOA\_N\Data\VN011321\  
 Data File : VN065494.D  
 Acq On : 13 Jan 2021 18:19  
 Operator : JC/MD  
 Sample : VSTDICCC020  
 Misc : 5.00mL/MSVOA\_N/WATER  
 ALS Vial : 4 Sample Multiplier: 1

Instrument :  
 MSVOA\_N  
 Client Sampled :  
 VSTDICCC020

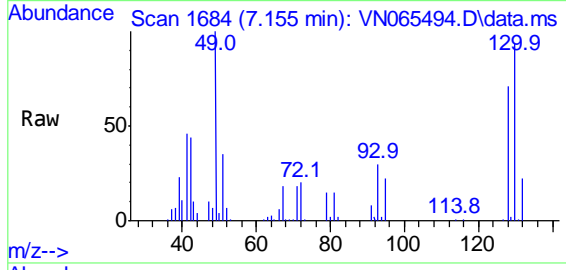
Quant Time: Jan 14 03:56:08 2021  
 Quant Method : Z:\voasrv\HPCHEM1\MSVOA\_N\methods\624N011321W.M  
 Quant Title : METHOD 624 VOLATILE ORGANIC ANALYSIS  
 QLast Update : Thu Jan 14 03:54:03 2021  
 Response via : Initial Calibration





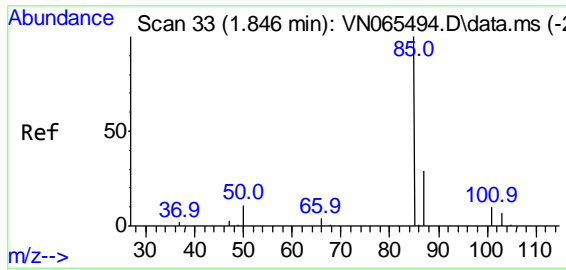
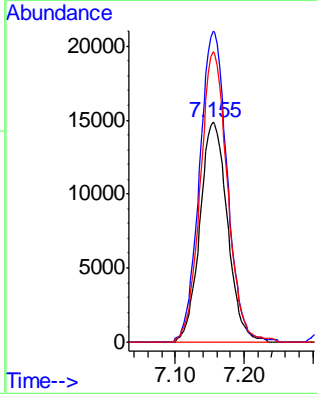
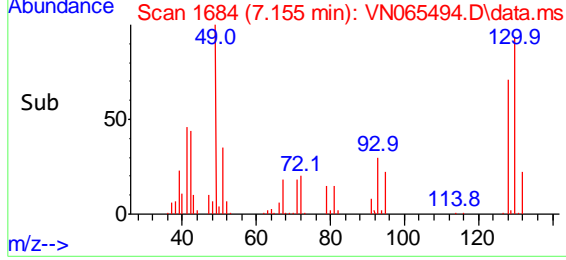
#1  
 Bromochloromethane  
 Concen: 30.00 ug/l  
 RT: 7.155 min Scan# 1684  
 Delta R.T. -0.000 min  
 Lab File: VN065494.D  
 Acq: 13 Jan 2021 18:19

**Instrument :**  
 MSVOA\_N  
**ClientSampled :**  
 VSTDICCC020

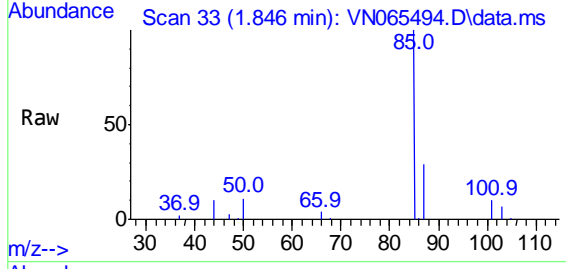


Tgt Ion: 128 Resp: 41184

Ion	Ratio	Lower	Upper
128	100		
49	142.0	0.0	355.0
130	130.2	0.0	325.5

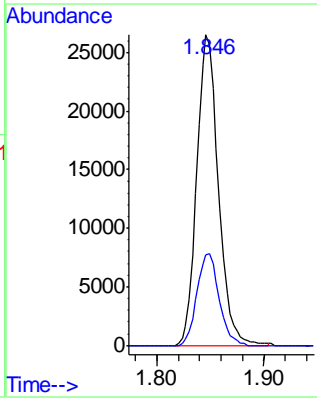
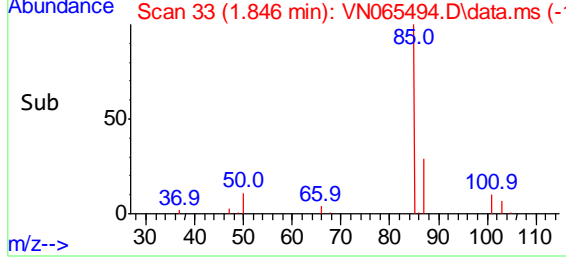


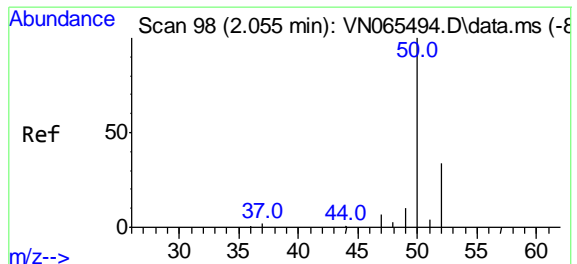
#2  
 Dichlorodifluoromethane  
 Concen: 16.96 ug/l  
 RT: 1.846 min Scan# 33  
 Delta R.T. 0.000 min  
 Lab File: VN065494.D  
 Acq: 13 Jan 2021 18:19



Tgt Ion: 85 Resp: 37162

Ion	Ratio	Lower	Upper
85	100		
87	29.2	14.6	43.8

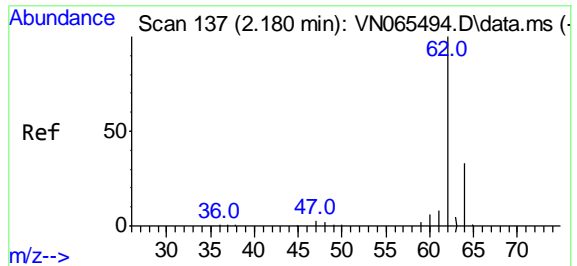
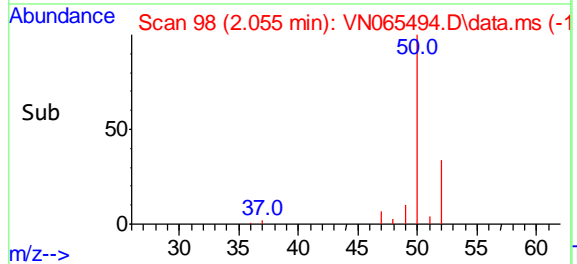
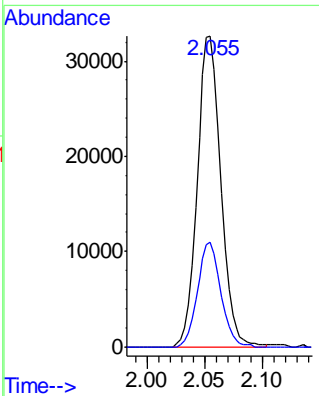
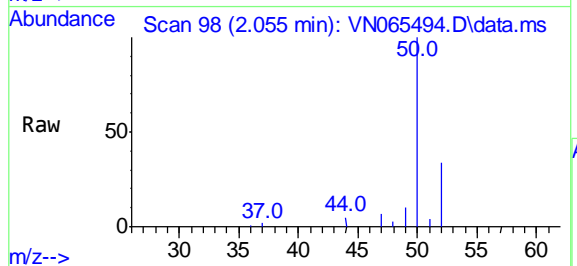




#3  
 Chloromethane  
 Concen: 18.12 ug/l  
 RT: 2.055 min Scan# 98  
 Delta R.T. 0.000 min  
 Lab File: VN065494.D  
 Acq: 13 Jan 2021 18:19

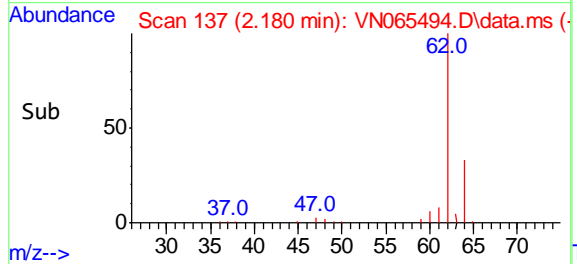
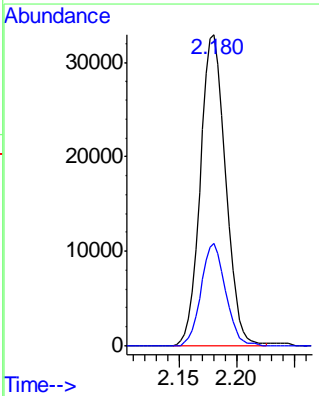
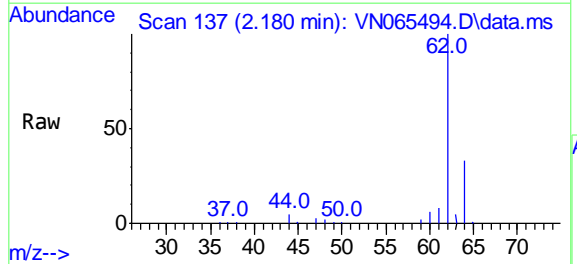
**Instrument :**  
 MSVOA\_N  
**ClientSampled :**  
 VSTDICCC020

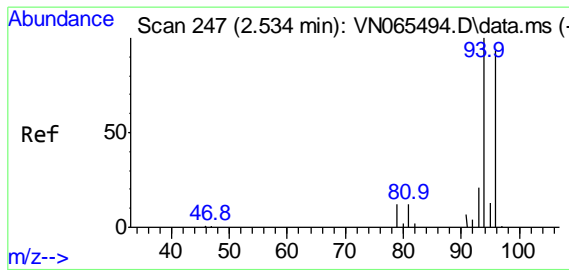
Tgt Ion: 50 Resp: 46315  
 Ion Ratio Lower Upper  
 50 100  
 52 33.5 26.8 40.2



#4  
 Vinyl Chloride  
 Concen: 18.48 ug/l  
 RT: 2.180 min Scan# 137  
 Delta R.T. 0.000 min  
 Lab File: VN065494.D  
 Acq: 13 Jan 2021 18:19

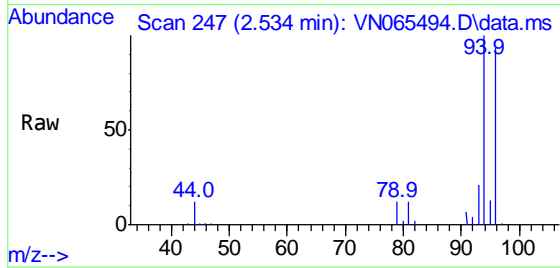
Tgt Ion: 62 Resp: 49767  
 Ion Ratio Lower Upper  
 62 100  
 64 32.8 26.2 39.4



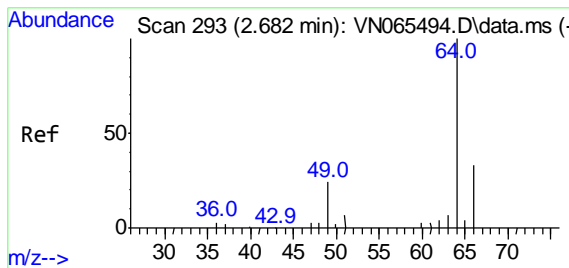
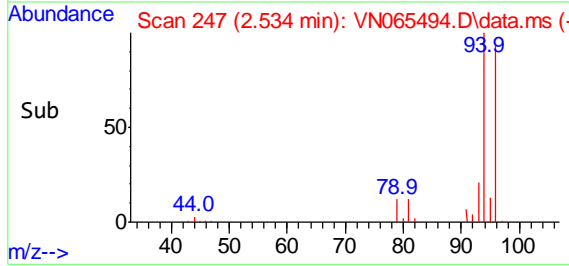
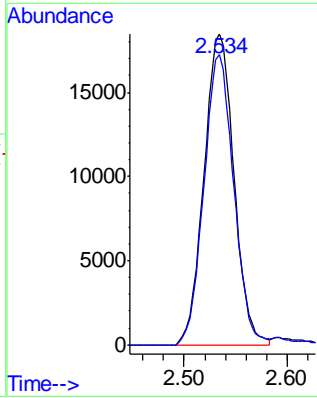


#5  
 Bromomethane  
 Concen: 18.93 ug/l  
 RT: 2.534 min Scan# 247  
 Delta R.T. 0.000 min  
 Lab File: VN065494.D  
 Acq: 13 Jan 2021 18:19

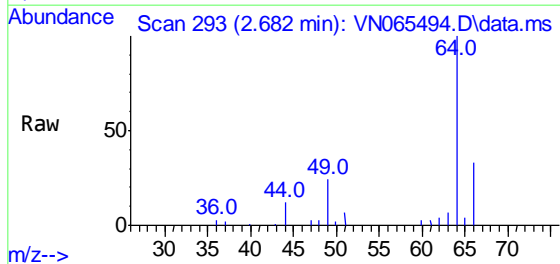
Instrument :  
 MSVOA\_N  
 ClientSampled :  
 VSTDICCC020



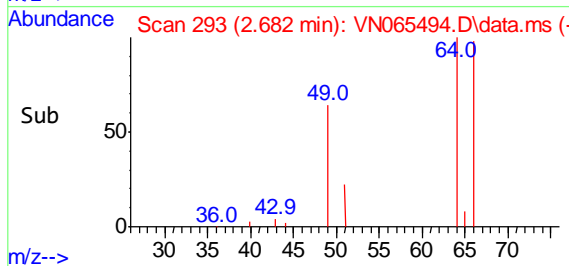
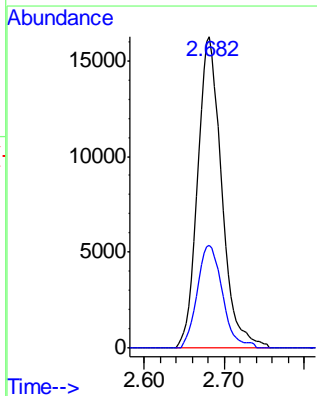
Tgt Ion: 94 Resp: 37244  
 Ion Ratio Lower Upper  
 94 100  
 96 93.2 74.6 111.8

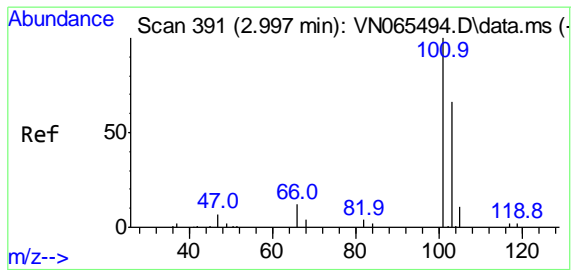


#6  
 Chloroethane  
 Concen: 18.86 ug/l  
 RT: 2.682 min Scan# 293  
 Delta R.T. 0.000 min  
 Lab File: VN065494.D  
 Acq: 13 Jan 2021 18:19



Tgt Ion: 64 Resp: 32740  
 Ion Ratio Lower Upper  
 64 100  
 66 32.9 26.3 39.5

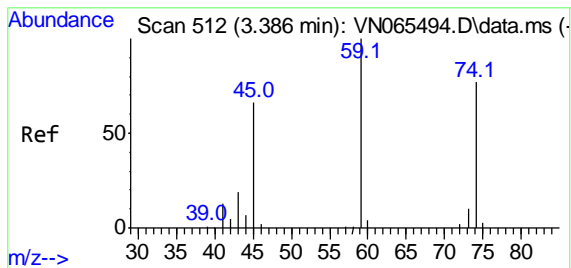
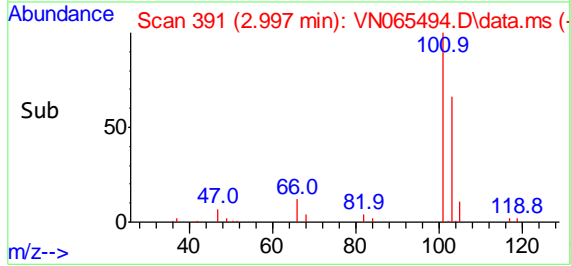
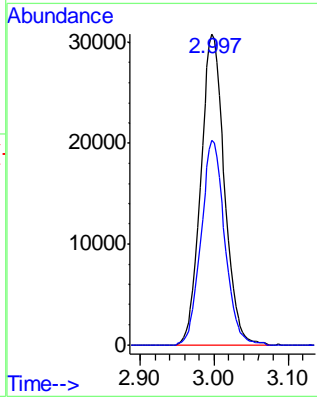
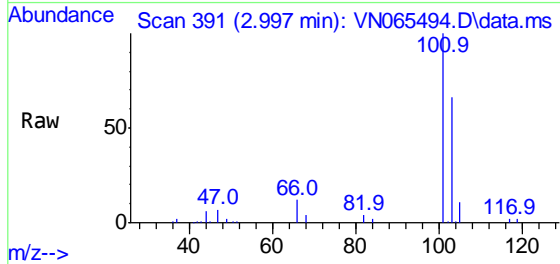




#7  
 Trichlorofluoromethane  
 Concen: 17.63 ug/l  
 RT: 2.997 min Scan# 391  
 Delta R.T. 0.000 min  
 Lab File: VN065494.D  
 Acq: 13 Jan 2021 18:19

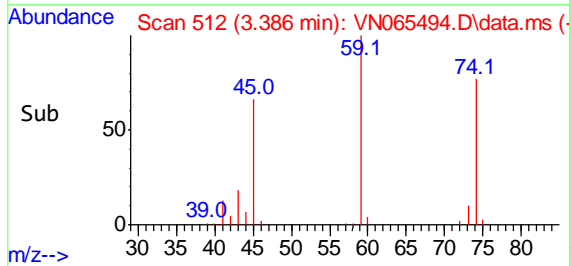
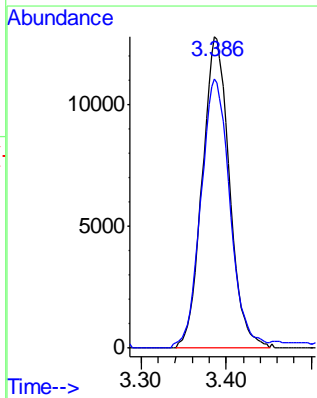
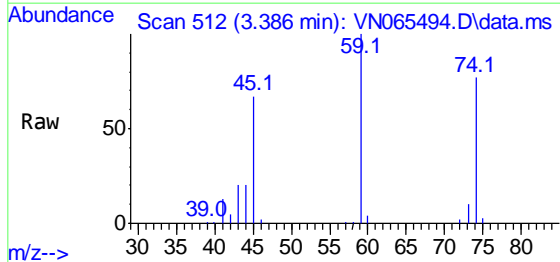
Instrument :  
 MSVOA\_N  
 ClientSampled :  
 VSTDICCC020

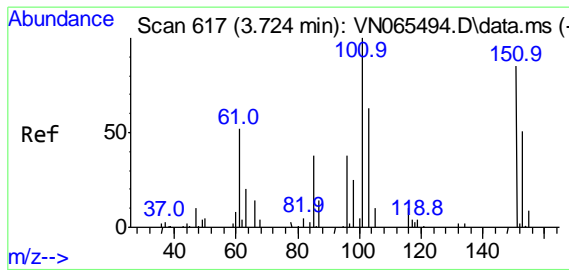
Tgt Ion: 101 Resp: 68145  
 Ion Ratio Lower Upper  
 101 100  
 103 65.7 52.6 78.8



#8  
 Diethyl Ether  
 Concen: 19.49 ug/l  
 RT: 3.386 min Scan# 512  
 Delta R.T. 0.000 min  
 Lab File: VN065494.D  
 Acq: 13 Jan 2021 18:19

Tgt Ion: 74 Resp: 28150  
 Ion Ratio Lower Upper  
 74 100  
 45 92.7 18.5 166.9



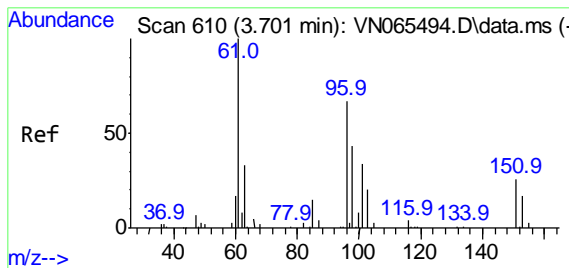
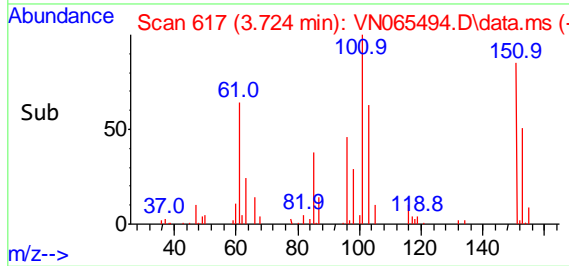
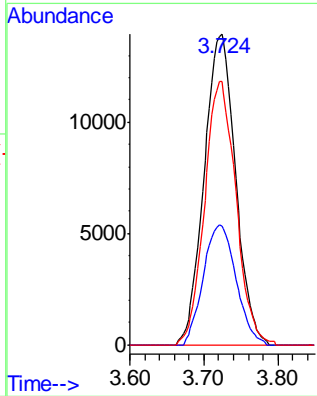
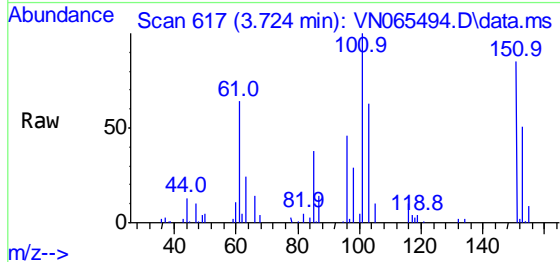


#9  
 1,1,2-Trichlorotrifluoroethane  
 Concen: 18.99 ug/l  
 RT: 3.724 min Scan# 617  
 Delta R.T. 0.000 min  
 Lab File: VN065494.D  
 Acq: 13 Jan 2021 18:19

Instrument :  
 MSVOA\_N  
 ClientSampled :  
 VSTDICCC020

Tgt Ion: 101 Resp: 41119

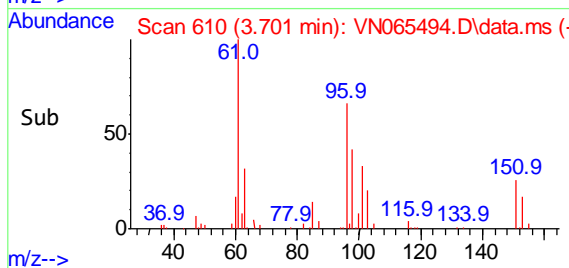
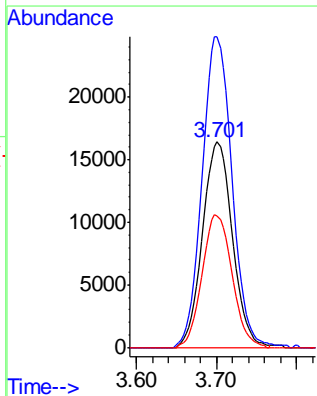
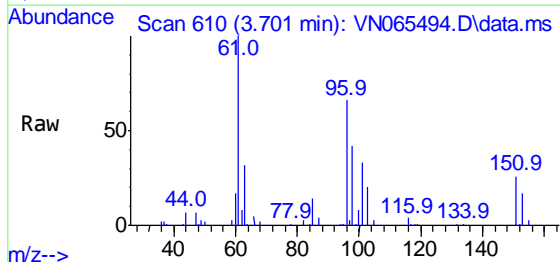
Ion	Ratio	Lower	Upper
101	100		
85	40.3	0.0	80.6
151	84.6	0.0	169.2



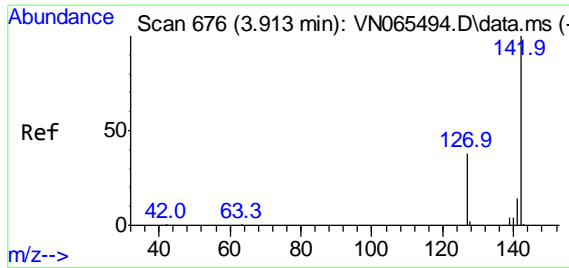
#10  
 1,1-Dichloroethene  
 Concen: 18.73 ug/l  
 RT: 3.701 min Scan# 610  
 Delta R.T. 0.000 min  
 Lab File: VN065494.D  
 Acq: 13 Jan 2021 18:19

Tgt Ion: 96 Resp: 41234

Ion	Ratio	Lower	Upper
96	100		
61	149.9	119.9	179.9
98	64.0	51.2	76.8

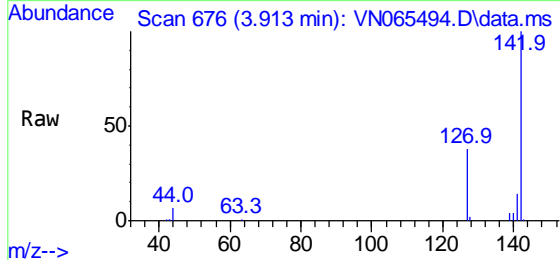






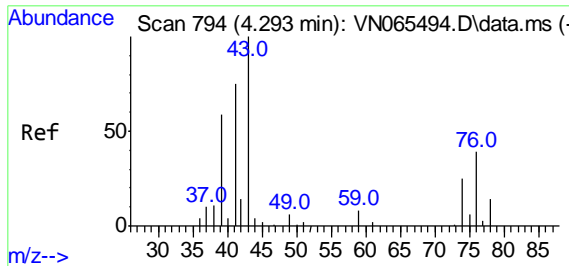
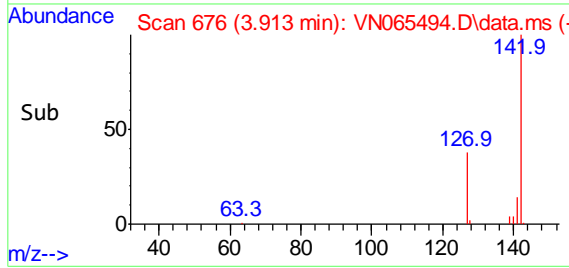
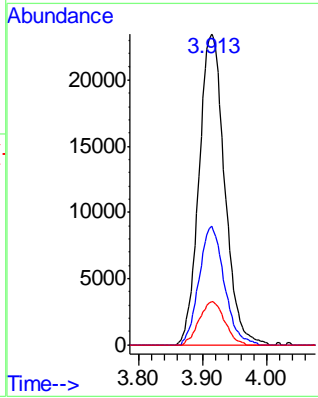
#11  
 Methyl Iodide  
 Concen: 19.44 ug/l  
 RT: 3.913 min Scan# 676  
 Delta R.T. 0.000 min  
 Lab File: VN065494.D  
 Acq: 13 Jan 2021 18:19

**Instrument :**  
 MSVOA\_N  
**ClientSampled :**  
 VSTDICCC020

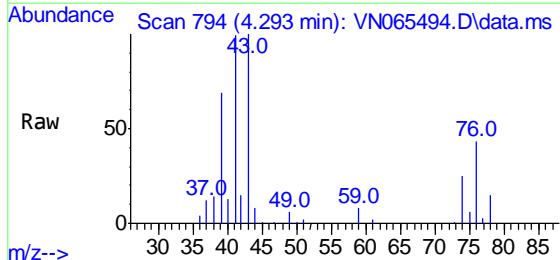


Tgt Ion: 142 Resp: 64724

Ion	Ratio	Lower	Upper
142	100		
127	38.3	19.1	57.5
141	13.9	7.0	20.9

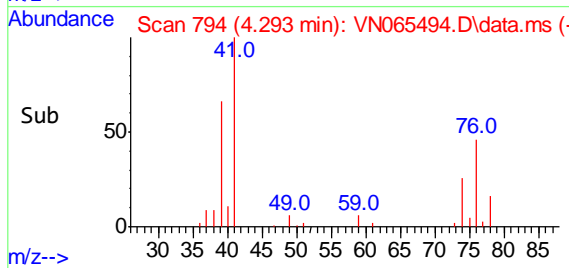
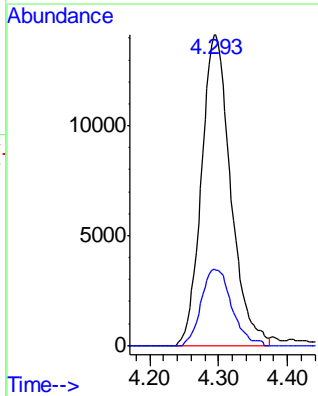


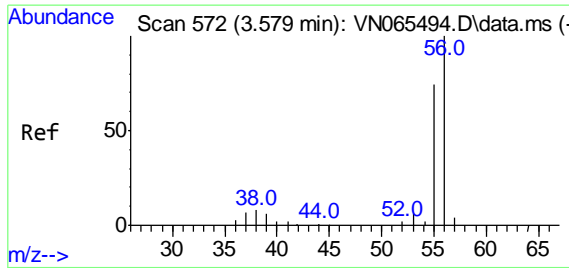
#12  
 Methyl Acetate  
 Concen: 18.22 ug/l  
 RT: 4.293 min Scan# 794  
 Delta R.T. 0.000 min  
 Lab File: VN065494.D  
 Acq: 13 Jan 2021 18:19



Tgt Ion: 43 Resp: 41629

Ion	Ratio	Lower	Upper
43	100		
74	24.9	19.9	29.9

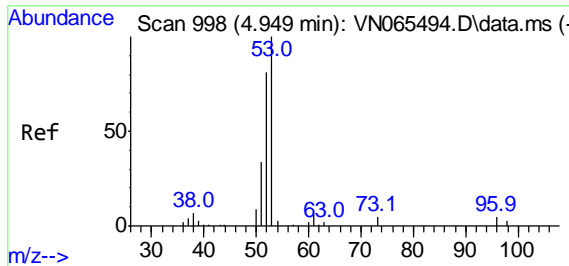
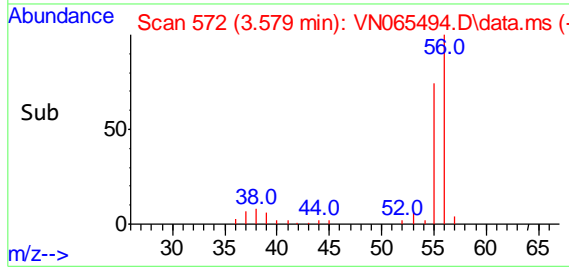
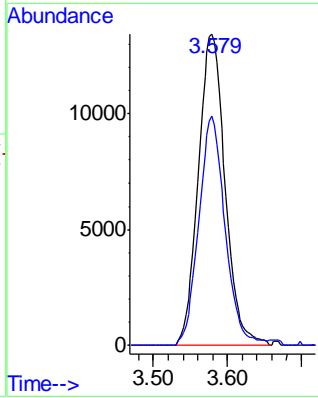
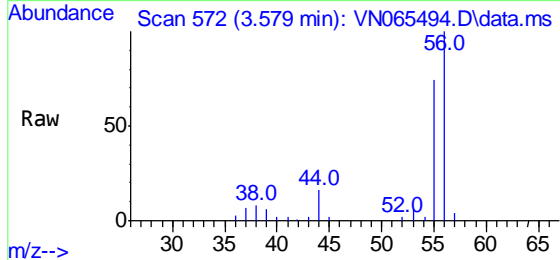




#13  
 Acrolein  
 Concen: 102.99 ug/l  
 RT: 3.579 min Scan# 572  
 Delta R.T. 0.000 min  
 Lab File: VN065494.D  
 Acq: 13 Jan 2021 18:19

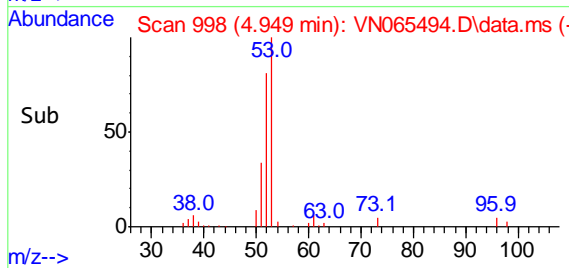
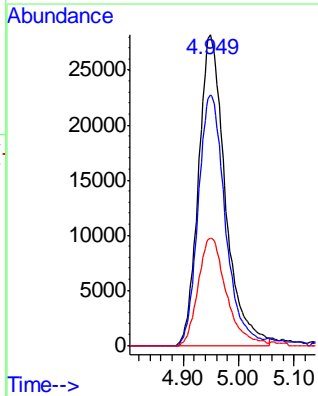
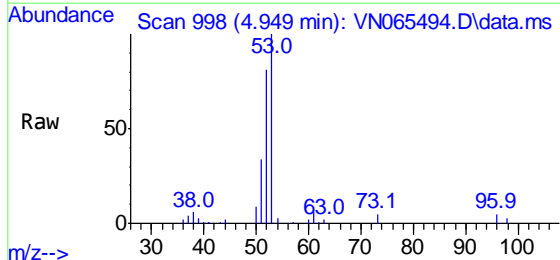
Instrument :  
 MSVOA\_N  
 ClientSampled :  
 VSTDICCC020

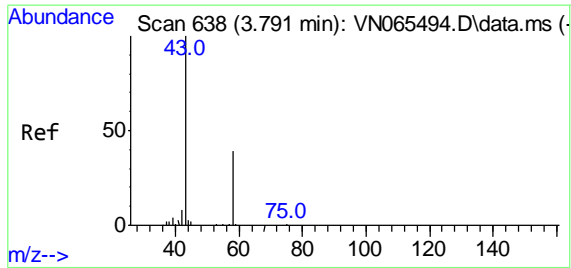
Tgt Ion: 56 Resp: 33743  
 Ion Ratio Lower Upper  
 56 100  
 55 72.1 57.7 86.5



#14  
 Acrylonitrile  
 Concen: 88.49 ug/l  
 RT: 4.949 min Scan# 998  
 Delta R.T. 0.000 min  
 Lab File: VN065494.D  
 Acq: 13 Jan 2021 18:19

Tgt Ion: 53 Resp: 93653  
 Ion Ratio Lower Upper  
 53 100  
 52 81.4 40.7 122.1  
 51 36.5 18.3 54.8

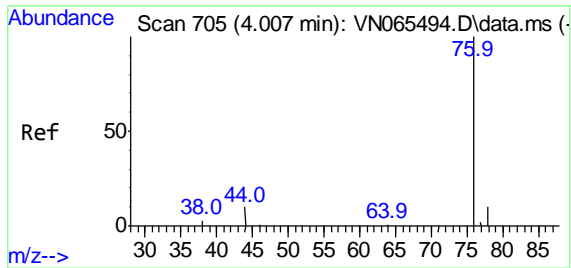
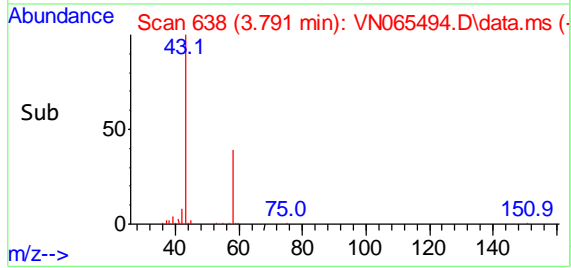
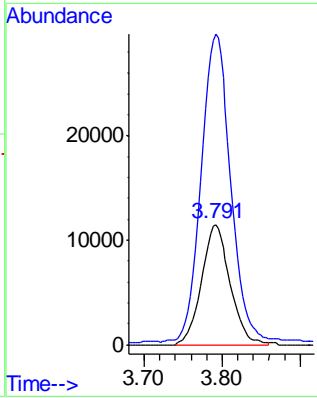
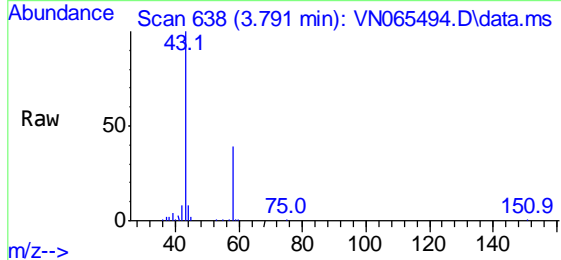




#15  
 Acetone  
 Concen: 90.48 ug/l  
 RT: 3.791 min Scan# 638  
 Delta R.T. 0.000 min  
 Lab File: VN065494.D  
 Acq: 13 Jan 2021 18:19

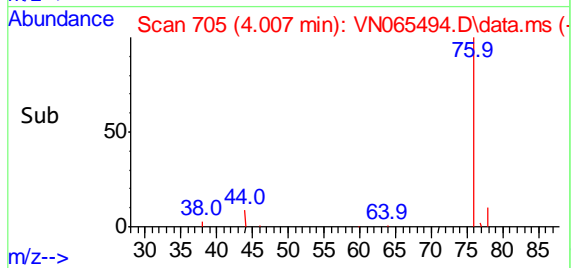
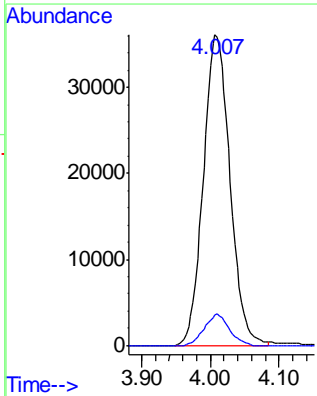
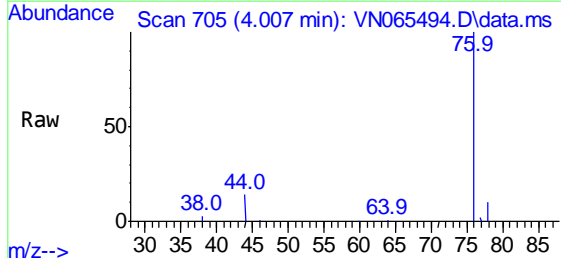
**Instrument :**  
 MSVOA\_N  
**ClientSampled :**  
 VSTDICCC020

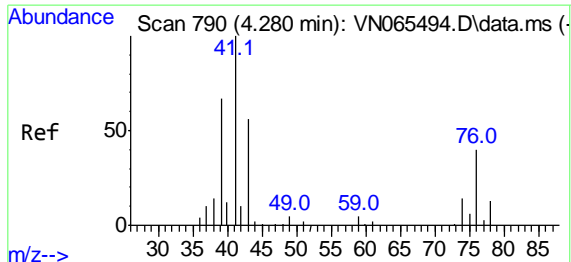
Tgt Ion: 58 Resp: 29334  
 Ion Ratio Lower Upper  
 58 100  
 43 254.2 203.4 305.0



#16  
 Carbon Disulfide  
 Concen: 15.72 ug/l  
 RT: 4.007 min Scan# 705  
 Delta R.T. 0.000 min  
 Lab File: VN065494.D  
 Acq: 13 Jan 2021 18:19

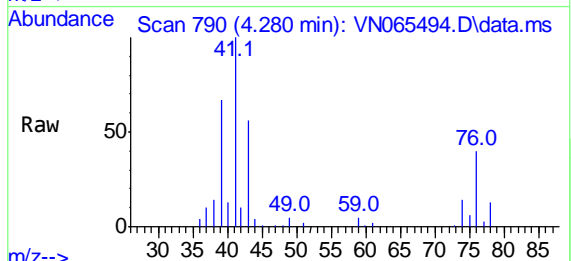
Tgt Ion: 76 Resp: 96851  
 Ion Ratio Lower Upper  
 76 100  
 78 9.8 7.8 11.8





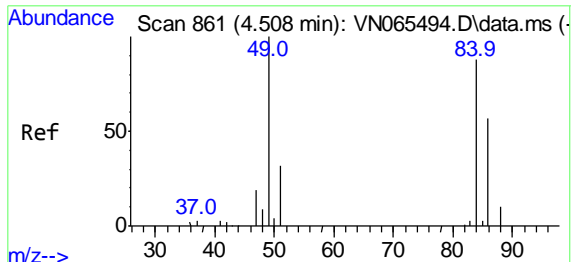
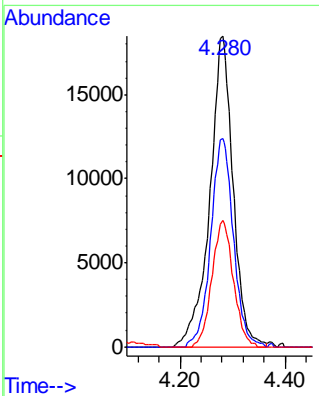
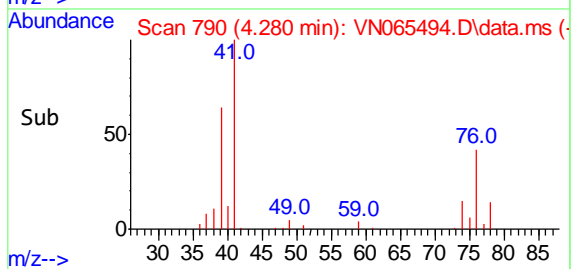
#17  
 Allyl chloride  
 Concen: 15.26 ug/l  
 RT: 4.280 min Scan# 790  
 Delta R.T. 0.000 min  
 Lab File: VN065494.D  
 Acq: 13 Jan 2021 18:19

**Instrument :**  
 MSVOA\_N  
**ClientSampled :**  
 VSTDICCC020

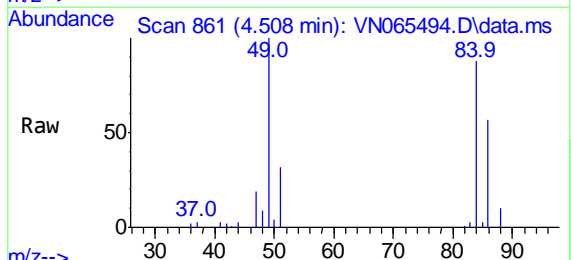


Tgt Ion: 41 Resp: 57008

Ion	Ratio	Lower	Upper
41	100		
39	67.0	33.5	100.5
76	40.5	20.3	60.8

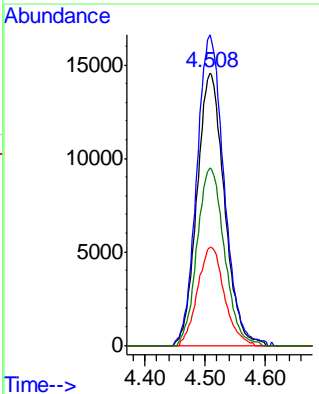
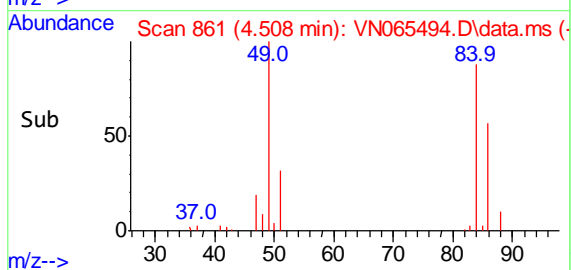


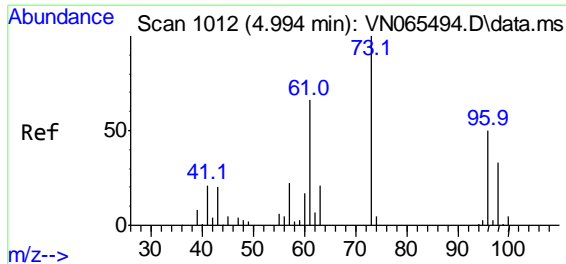
#18  
 Methylene Chloride  
 Concen: 18.04 ug/l  
 RT: 4.508 min Scan# 861  
 Delta R.T. 0.000 min  
 Lab File: VN065494.D  
 Acq: 13 Jan 2021 18:19



Tgt Ion: 84 Resp: 45353

Ion	Ratio	Lower	Upper
84	100		
49	114.1	91.3	136.9
51	36.0	28.8	43.2
86	65.1	52.1	78.1



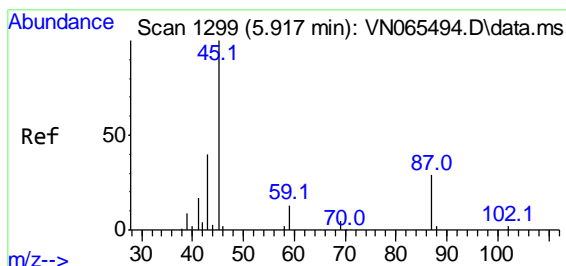
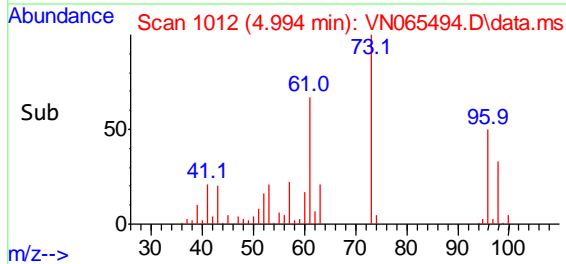
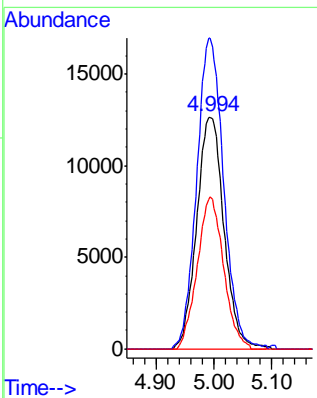
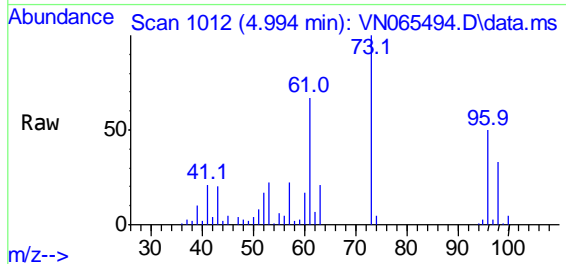


#19  
 trans-1,2-Dichloroethene  
 Concen: 17.34 ug/l  
 RT: 4.994 min Scan# 1012  
 Delta R.T. 0.000 min  
 Lab File: VN065494.D  
 Acq: 13 Jan 2021 18:19

Instrument :  
 MSVOA\_N  
 ClientSampled :  
 VSTDICCC020

Tgt Ion: 96 Resp: 41366

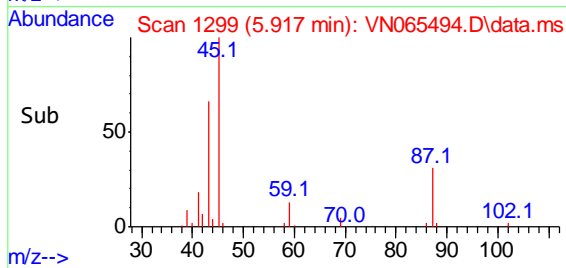
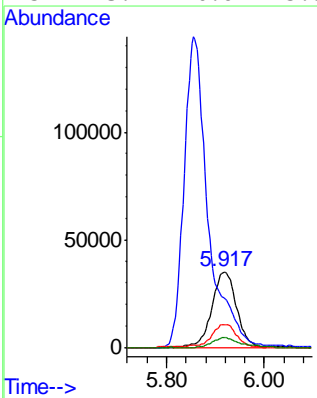
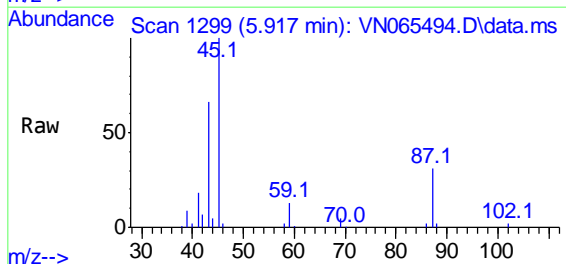
Ion	Ratio	Lower	Upper
96	100		
61	132.7	106.2	159.2
98	65.5	52.4	78.6

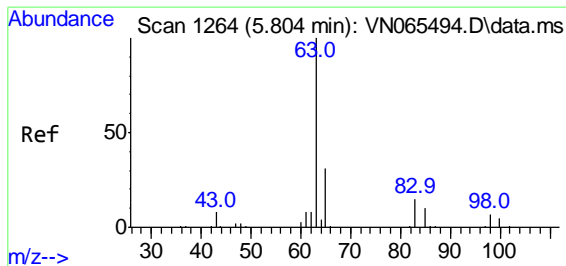


#20  
 Diisopropyl ether  
 Concen: 16.25 ug/l  
 RT: 5.917 min Scan# 1299  
 Delta R.T. 0.000 min  
 Lab File: VN065494.D  
 Acq: 13 Jan 2021 18:19

Tgt Ion: 45 Resp: 123195

Ion	Ratio	Lower	Upper
45	100		
43	63.0	50.4	75.6
87	30.6	24.5	36.7
59	13.2	10.6	15.8



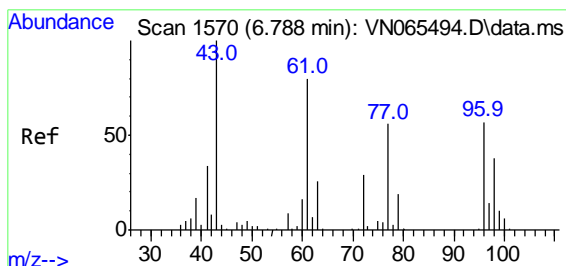
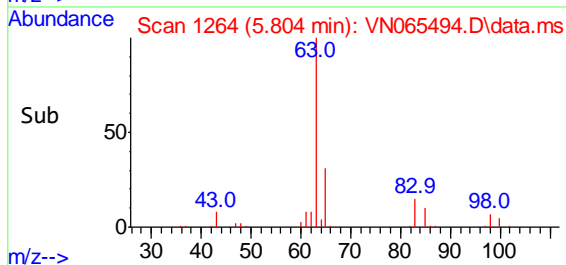
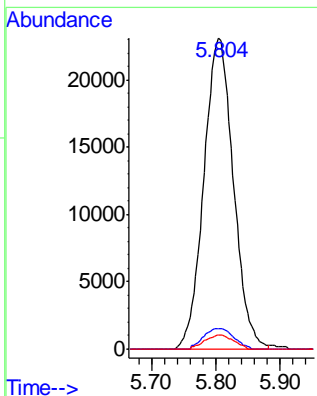
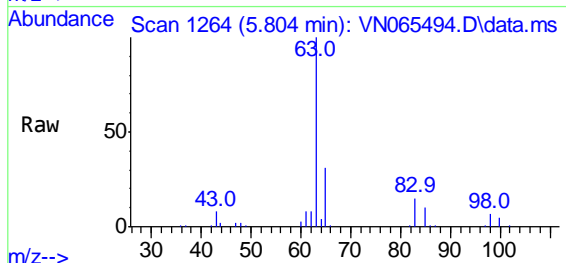


#21  
 1,1-Dichloroethane  
 Concen: 17.13 ug/l  
 RT: 5.804 min Scan# 1264  
 Delta R.T. 0.000 min  
 Lab File: VN065494.D  
 Acq: 13 Jan 2021 18:19

Instrument :  
 MSVOA\_N  
 ClientSampled :  
 VSTDICCC020

Tgt Ion: 63 Resp: 73728

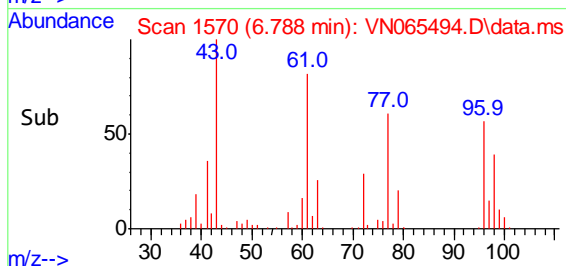
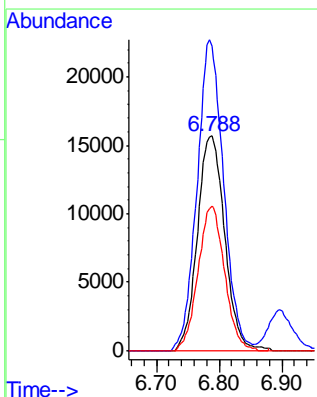
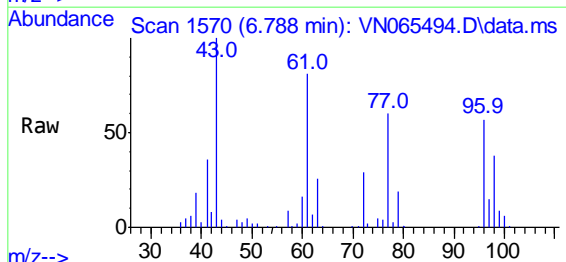
Ion	Ratio	Lower	Upper
63	100		
98	6.6	3.3	9.9
100	4.5	2.3	6.8

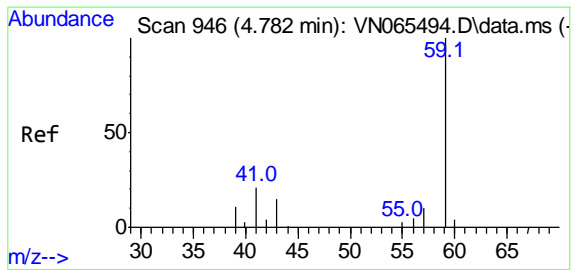


#22  
 cis-1,2-Dichloroethene  
 Concen: 17.25 ug/l  
 RT: 6.788 min Scan# 1570  
 Delta R.T. 0.000 min  
 Lab File: VN065494.D  
 Acq: 13 Jan 2021 18:19

Tgt Ion: 96 Resp: 47191

Ion	Ratio	Lower	Upper
96	100		
61	140.6	112.5	168.7
98	65.2	52.2	78.2

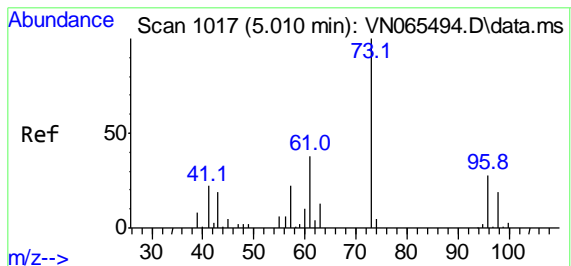
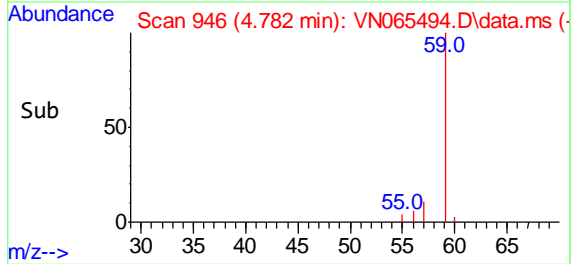
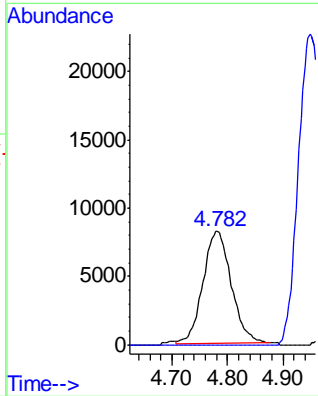
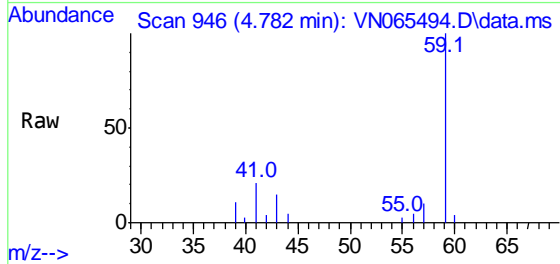




#23  
 tert-Butyl Alcohol  
 Concen: 67.90 ug/l  
 RT: 4.782 min Scan# 946  
 Delta R.T. 0.000 min  
 Lab File: VN065494.D  
 Acq: 13 Jan 2021 18:19

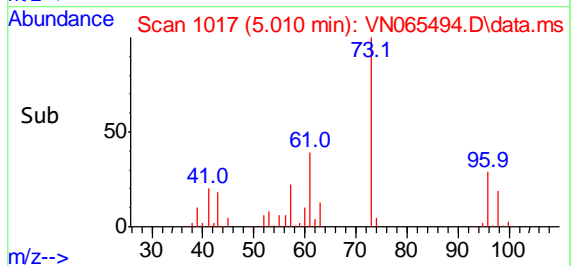
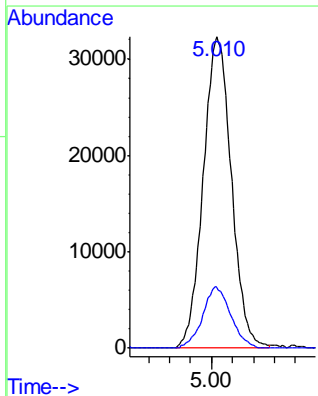
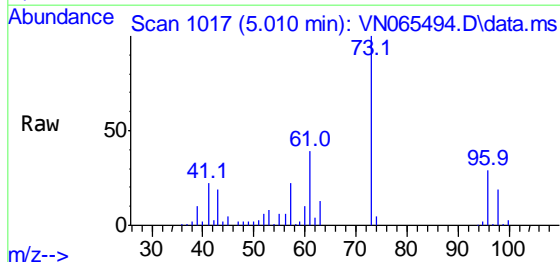
Instrument :  
 MSVOA\_N  
 ClientSampled :  
 VSTDICCC020

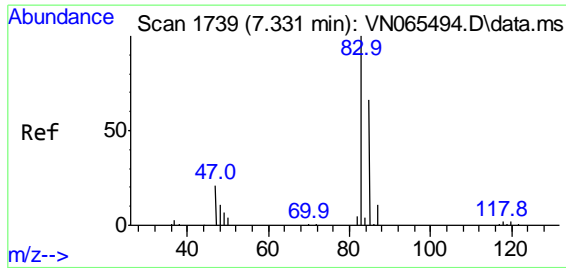
Tgt Ion: 59 Resp: 29234  
 Ion Ratio Lower Upper  
 59 100  
 52 0.0 0.0 0.0



#24  
 Methyl tert-Butyl Ether  
 Concen: 16.03 ug/l  
 RT: 5.010 min Scan# 1017  
 Delta R.T. 0.000 min  
 Lab File: VN065494.D  
 Acq: 13 Jan 2021 18:19

Tgt Ion: 73 Resp: 119525  
 Ion Ratio Lower Upper  
 73 100  
 43 19.3 15.4 23.2

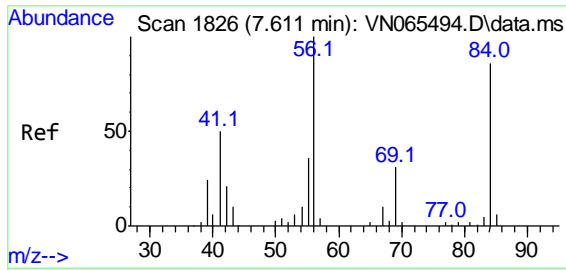
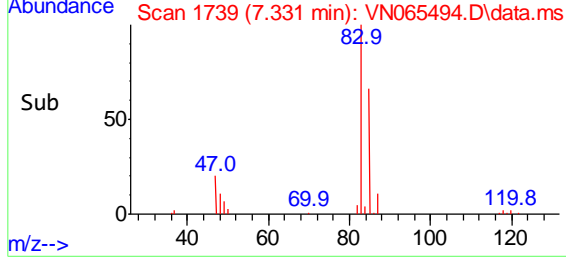
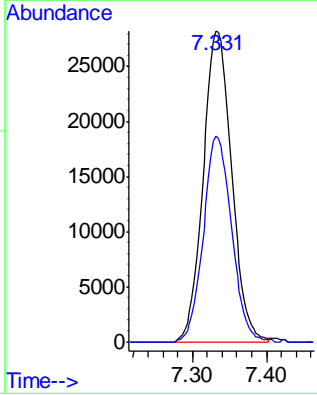
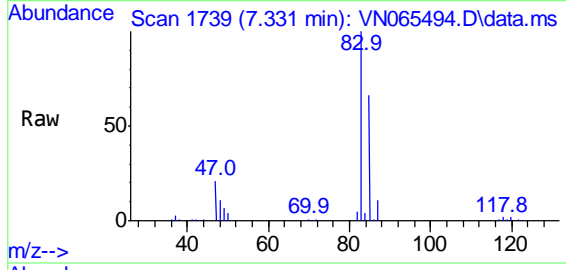




#25  
 Chloroform  
 Concen: 17.03 ug/l  
 RT: 7.331 min Scan# 1739  
 Delta R.T. 0.000 min  
 Lab File: VN065494.D  
 Acq: 13 Jan 2021 18:19

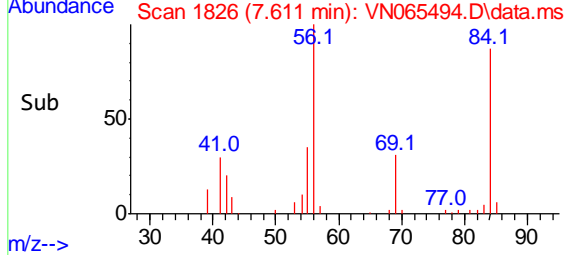
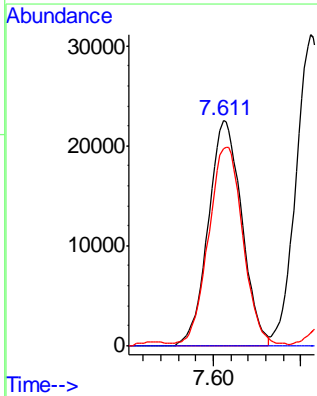
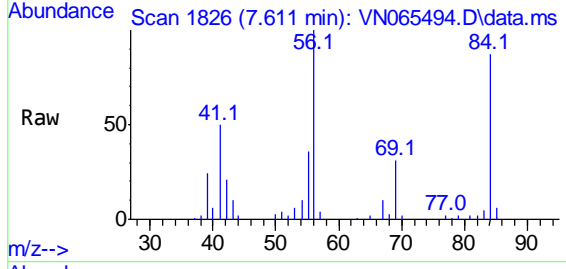
Instrument :  
 MSVOA\_N  
 ClientSampled :  
 VSTDICCC020

Tgt Ion: 83 Resp: 75436  
 Ion Ratio Lower Upper  
 83 100  
 85 66.2 53.0 79.4

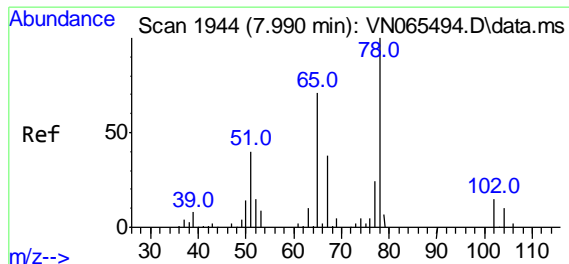


#26  
 Cyclohexane  
 Concen: 15.95 ug/l  
 RT: 7.611 min Scan# 1826  
 Delta R.T. 0.000 min  
 Lab File: VN065494.D  
 Acq: 13 Jan 2021 18:19

Tgt Ion: 56 Resp: 59583  
 Ion Ratio Lower Upper  
 56 100  
 89 0.0 0.0 0.0  
 84 91.0 72.8 109.2





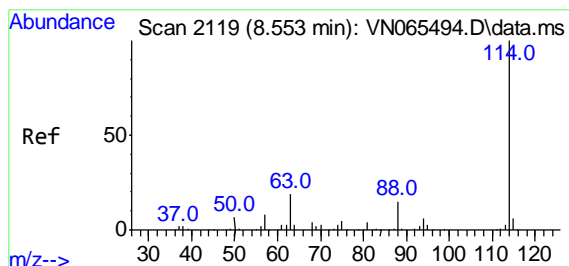
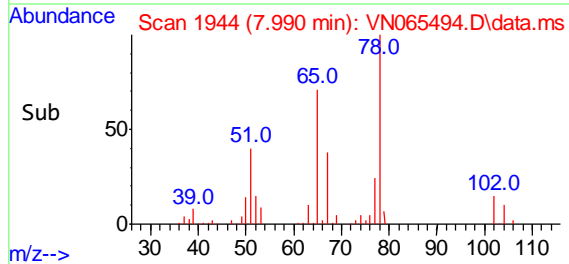
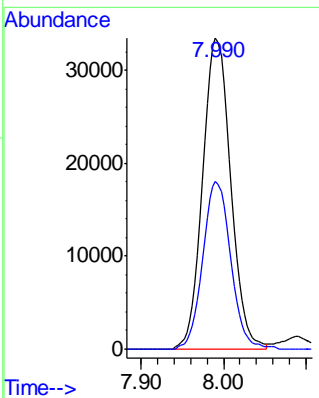
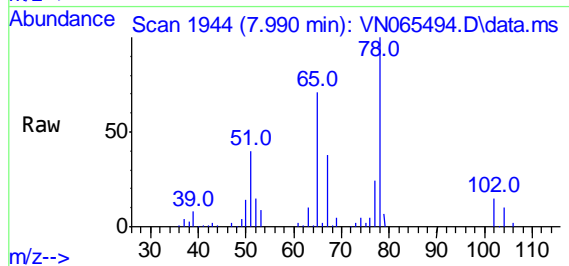


#27  
 1,2-Dichloroethane-d4  
 Concen: 27.10 ug/l  
 RT: 7.990 min Scan# 1944  
 Delta R.T. 0.000 min  
 Lab File: VN065494.D  
 Acq: 13 Jan 2021 18:19

**Instrument :**  
 MSVOA\_N  
**ClientSampled :**  
 VSTDICCC020

Tgt Ion: 65 Resp: 78796

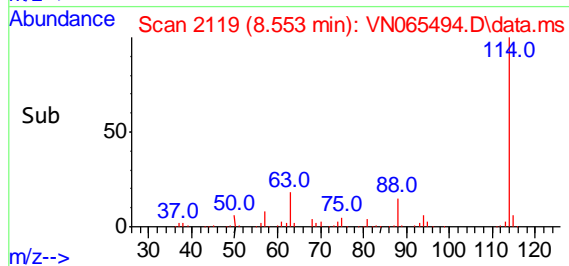
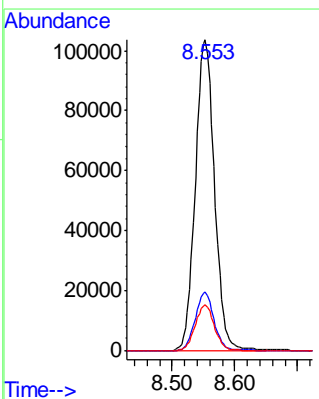
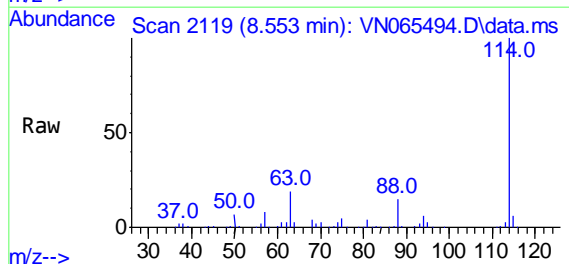
Ion	Ratio	Lower	Upper
65	100		
67	53.5	42.8	64.2

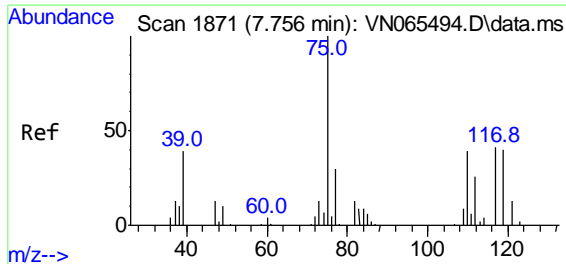


#28  
 1,4-Difluorobenzene  
 Concen: 30.00 ug/l  
 RT: 8.553 min Scan# 2119  
 Delta R.T. 0.000 min  
 Lab File: VN065494.D  
 Acq: 13 Jan 2021 18:19

Tgt Ion: 114 Resp: 218727

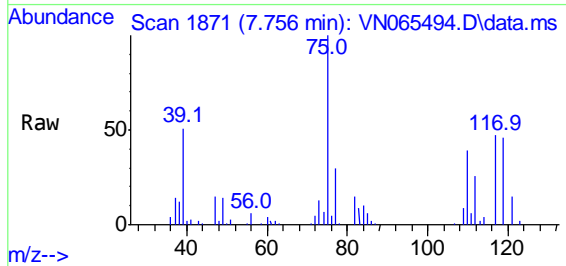
Ion	Ratio	Lower	Upper
114	100		
63	18.4	14.7	22.1
88	14.6	11.7	17.5





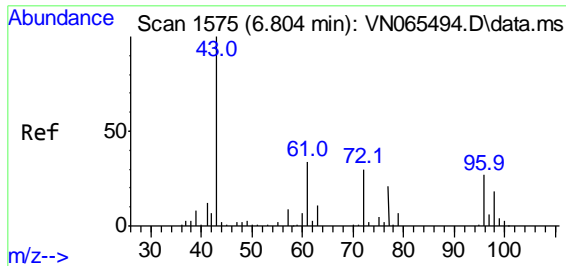
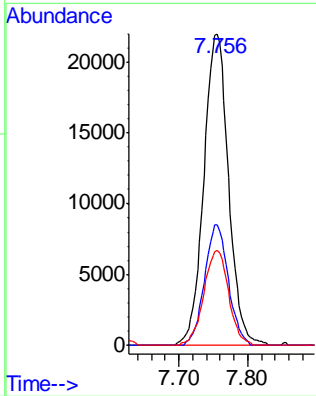
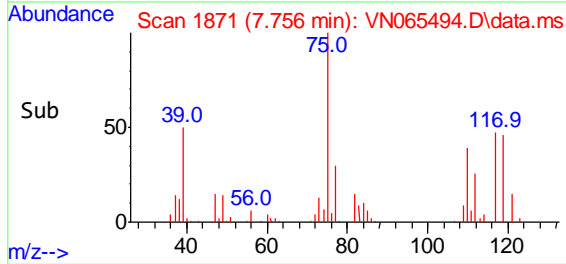
#29  
 1,1-Dichloropropene  
 Concen: 17.11 ug/l  
 RT: 7.756 min Scan# 1871  
 Delta R.T. 0.000 min  
 Lab File: VN065494.D  
 Acq: 13 Jan 2021 18:19

Instrument :  
 MSVOA\_N  
 ClientSampled :  
 VSTDICCC020

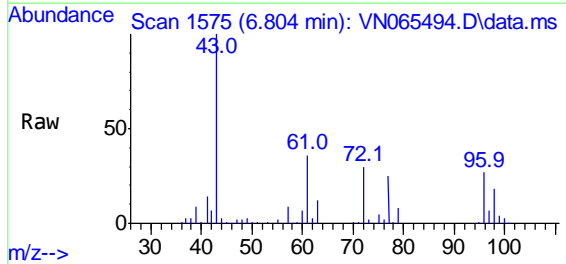


Tgt Ion: 75 Resp: 54704

Ion	Ratio	Lower	Upper
75	100		
110	37.1	0.0	74.2
77	30.5	0.0	61.0

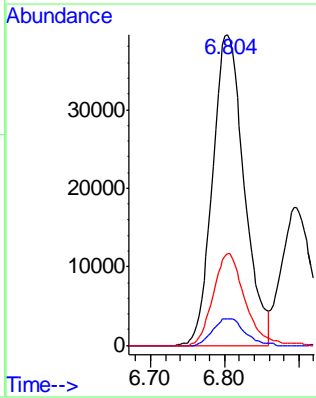
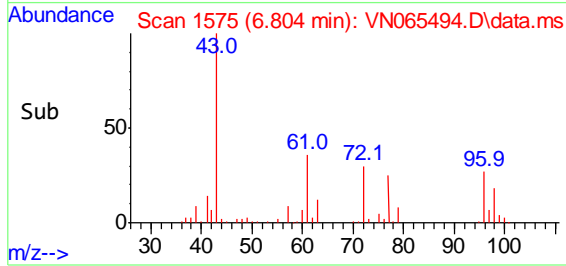


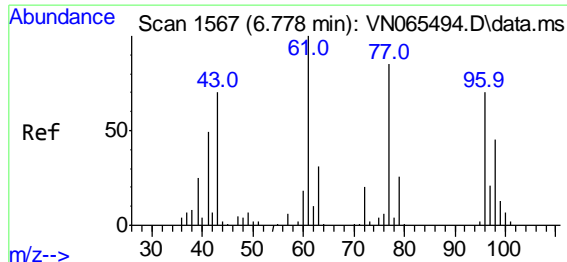
#30  
 2-Butanone  
 Concen: 81.93 ug/l  
 RT: 6.804 min Scan# 1575  
 Delta R.T. 0.000 min  
 Lab File: VN065494.D  
 Acq: 13 Jan 2021 18:19



Tgt Ion: 43 Resp: 117096

Ion	Ratio	Lower	Upper
43	100		
57	8.7	7.0	10.4
72	29.5	23.6	35.4

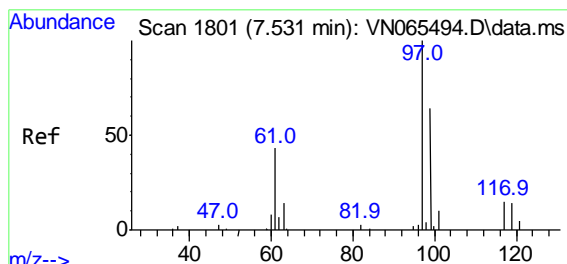
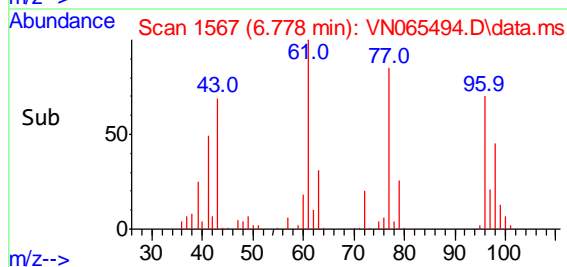
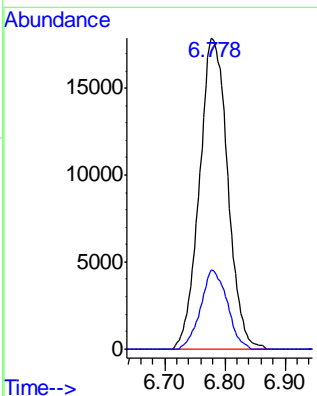
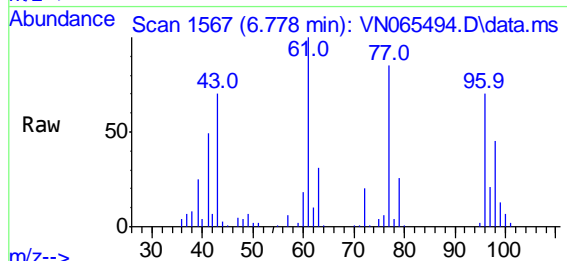




#31  
 2,2-Dichloropropane  
 Concen: 15.09 ug/l  
 RT: 6.778 min Scan# 1567  
 Delta R.T. 0.000 min  
 Lab File: VN065494.D  
 Acq: 13 Jan 2021 18:19

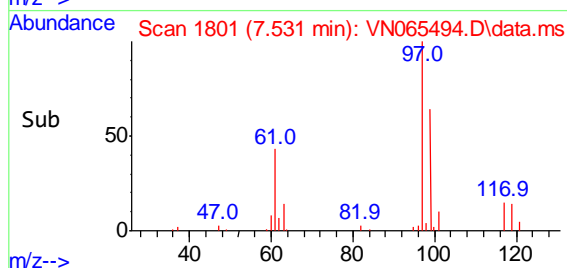
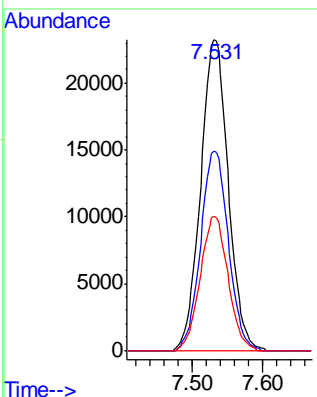
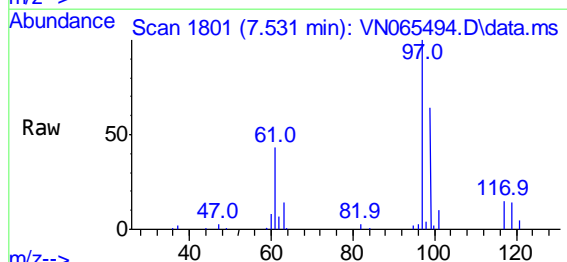
Instrument :  
 MSVOA\_N  
 ClientSampled :  
 VSTDICCC020

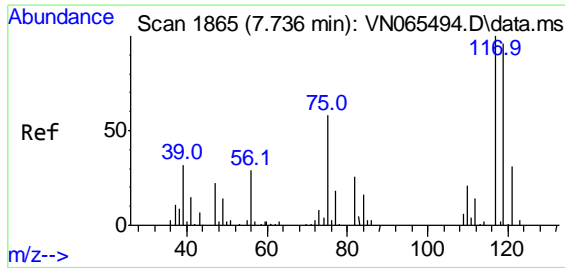
Tgt Ion: 77 Resp: 57565  
 Ion Ratio Lower Upper  
 77 100  
 97 23.7 19.0 28.4



#32  
 1,1,1-Trichloroethane  
 Concen: 16.57 ug/l  
 RT: 7.531 min Scan# 1801  
 Delta R.T. 0.000 min  
 Lab File: VN065494.D  
 Acq: 13 Jan 2021 18:19

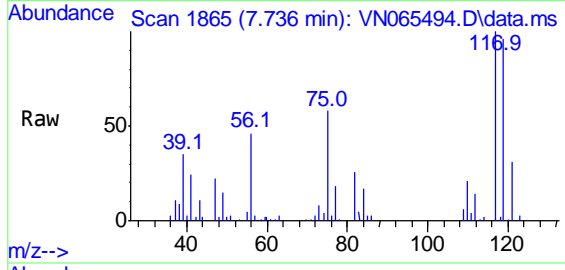
Tgt Ion: 97 Resp: 63413  
 Ion Ratio Lower Upper  
 97 100  
 99 64.4 51.5 77.3  
 61 43.4 34.7 52.1





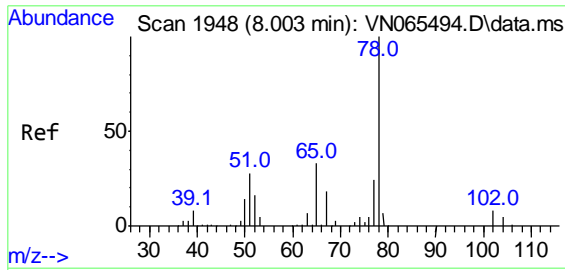
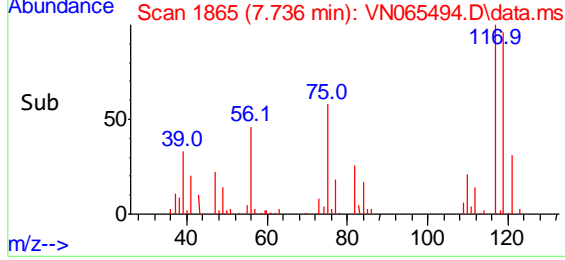
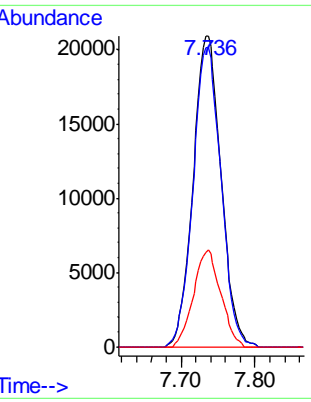
#33  
 Carbon Tetrachloride  
 Concen: 16.30 ug/l  
 RT: 7.736 min Scan# 1865  
 Delta R.T. 0.000 min  
 Lab File: VN065494.D  
 Acq: 13 Jan 2021 18:19

**Instrument :**  
 MSVOA\_N  
**ClientSampled :**  
 VSTDICCC020

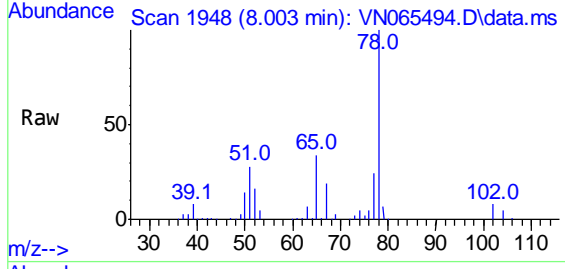


Tgt Ion: 117 Resp: 54754

Ion	Ratio	Lower	Upper
117	100		
119	96.2	77.0	115.4
121	31.0	24.8	37.2

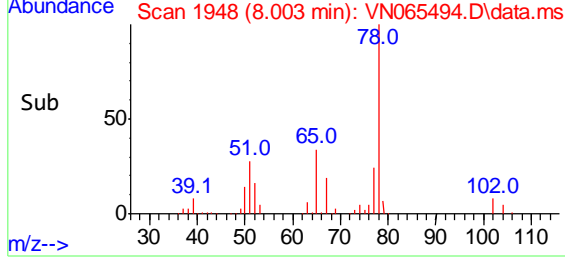
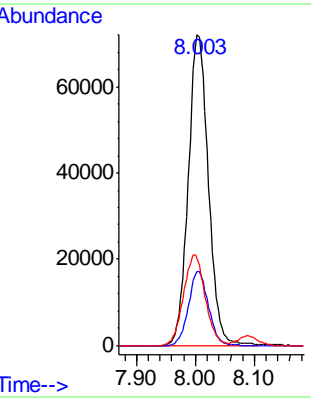


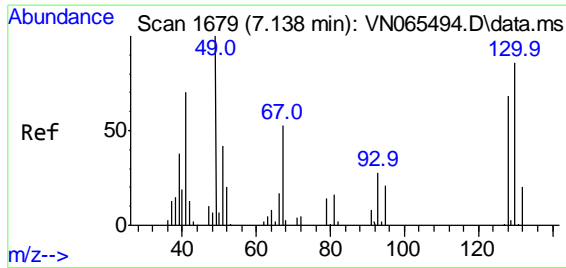
#34  
 Benzene  
 Concen: 18.01 ug/l  
 RT: 8.003 min Scan# 1948  
 Delta R.T. 0.000 min  
 Lab File: VN065494.D  
 Acq: 13 Jan 2021 18:19



Tgt Ion: 78 Resp: 171848

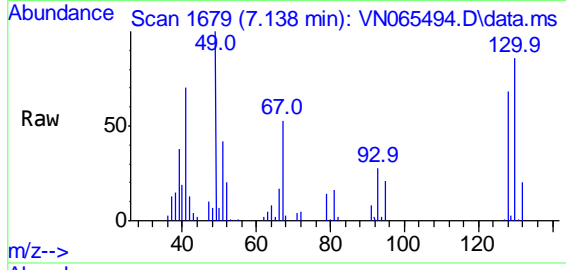
Ion	Ratio	Lower	Upper
78	100		
77	23.8	19.0	28.6
51	27.6	22.1	33.1





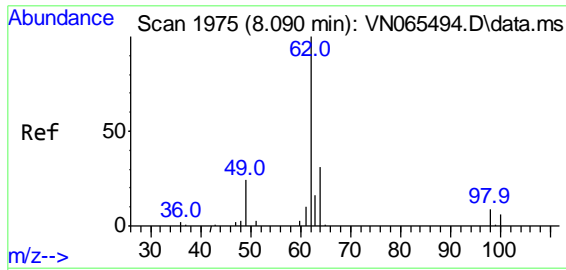
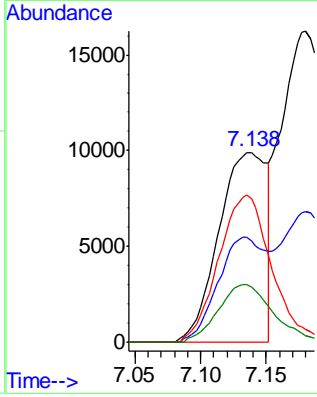
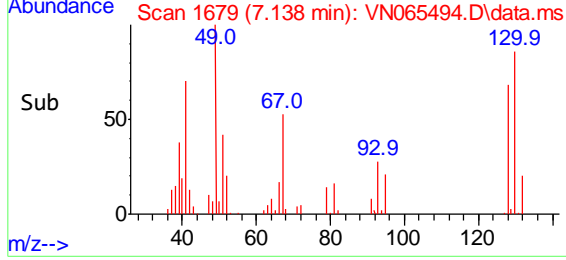
#35  
 Methacrylonitrile  
 Concen: 18.45 ug/l  
 RT: 7.138 min Scan# 1679  
 Delta R.T. 0.000 min  
 Lab File: VN065494.D  
 Acq: 13 Jan 2021 18:19

Instrument :  
 MSVOA\_N  
 ClientSampled :  
 VSTDICCC020

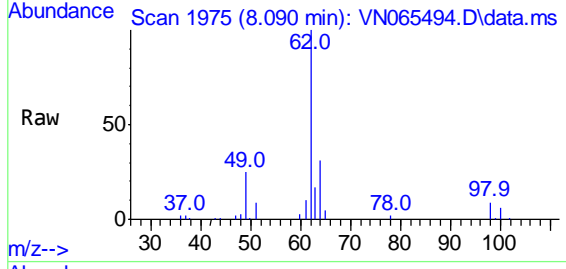


Tgt Ion: 41 Resp: 24958

Ion	Ratio	Lower	Upper
41	100		
39	53.5	26.8	80.3
67	75.9	38.0	113.9
52	28.9	14.4	43.4

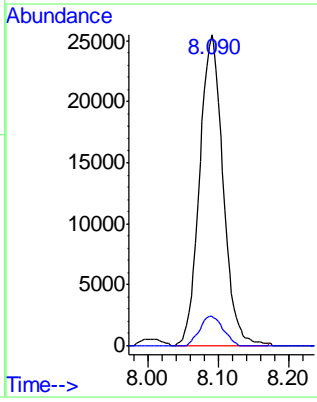
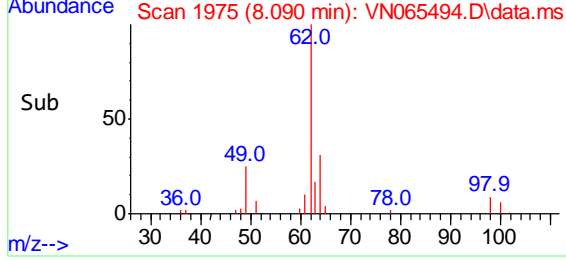


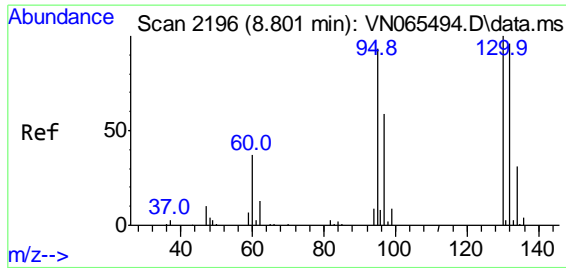
#36  
 1,2-Dichloroethane  
 Concen: 16.91 ug/l  
 RT: 8.090 min Scan# 1975  
 Delta R.T. 0.000 min  
 Lab File: VN065494.D  
 Acq: 13 Jan 2021 18:19



Tgt Ion: 62 Resp: 58894

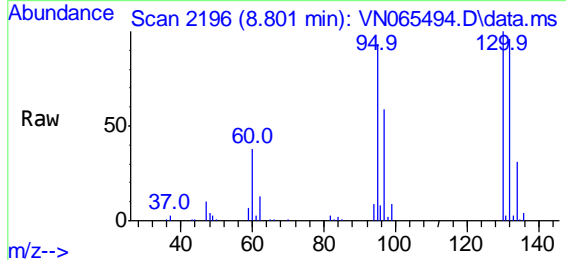
Ion	Ratio	Lower	Upper
62	100		
98	9.3	7.4	11.2



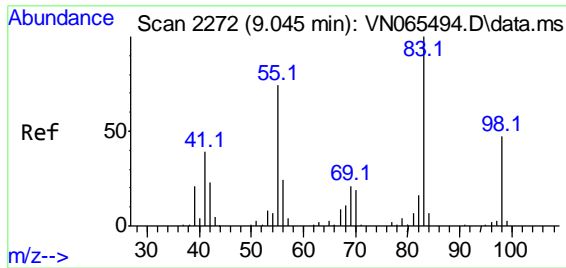
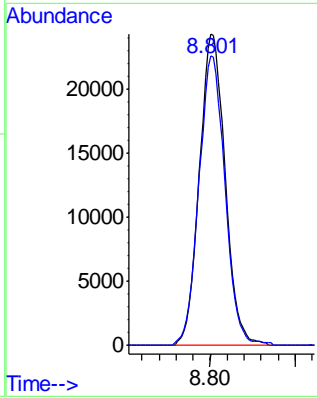
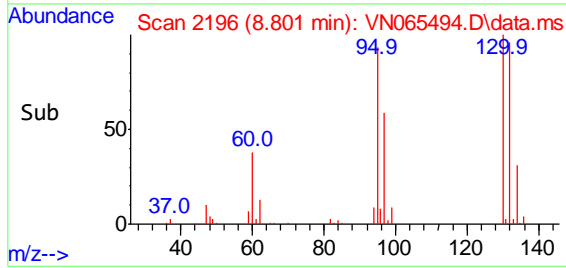


#37  
 Trichloroethene  
 Concen: 18.48 ug/l  
 RT: 8.801 min Scan# 2196  
 Delta R.T. 0.000 min  
 Lab File: VN065494.D  
 Acq: 13 Jan 2021 18:19

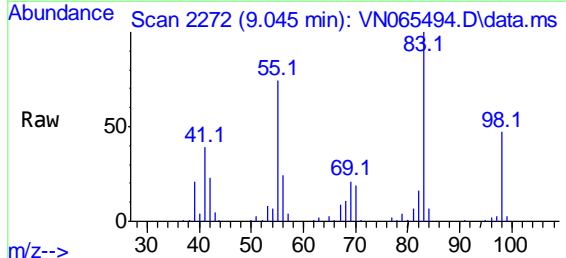
**Instrument :**  
 MSVOA\_N  
**ClientSampled :**  
 VSTDICCC020



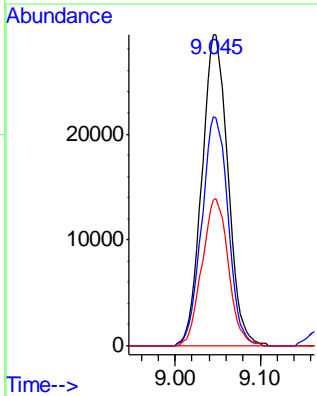
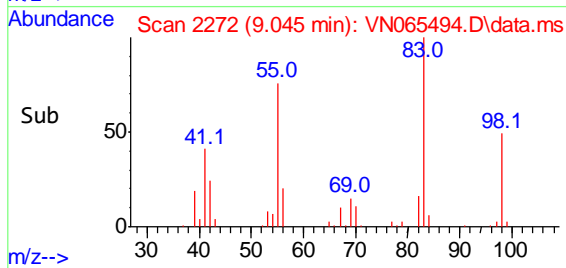
Tgt Ion:130 Resp: 50720  
 Ion Ratio Lower Upper  
 130 100  
 95 92.5 74.0 111.0

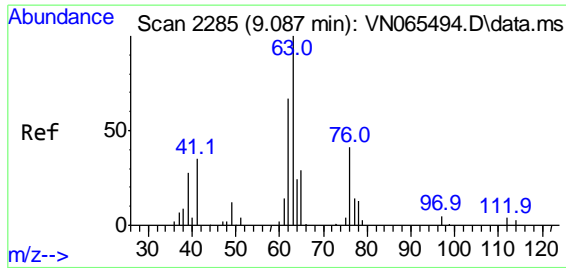


#38  
 Methylcyclohexane  
 Concen: 16.11 ug/l  
 RT: 9.045 min Scan# 2272  
 Delta R.T. 0.000 min  
 Lab File: VN065494.D  
 Acq: 13 Jan 2021 18:19



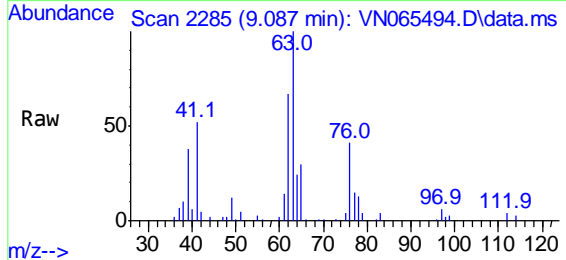
Tgt Ion: 83 Resp: 62310  
 Ion Ratio Lower Upper  
 83 100  
 55 74.4 37.2 111.6  
 98 47.6 23.8 71.4



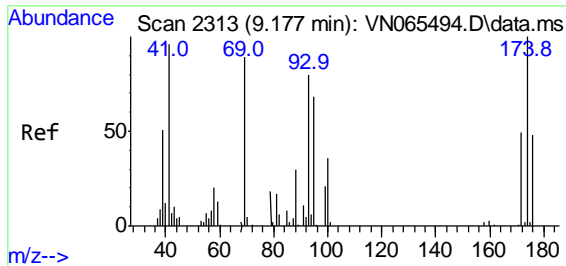
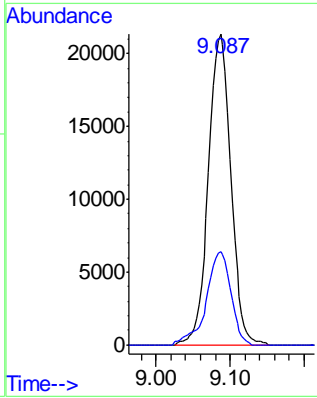
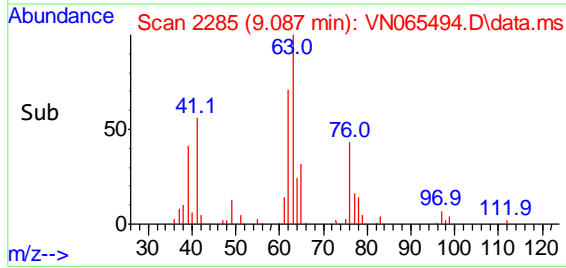


#39  
 1,2-Dichloropropane  
 Concen: 18.15 ug/l  
 RT: 9.087 min Scan# 2285  
 Delta R.T. 0.000 min  
 Lab File: VN065494.D  
 Acq: 13 Jan 2021 18:19

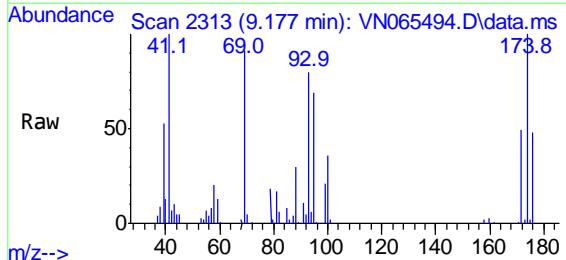
**Instrument :**  
 MSVOA\_N  
**ClientSampled :**  
 VSTDICCC020



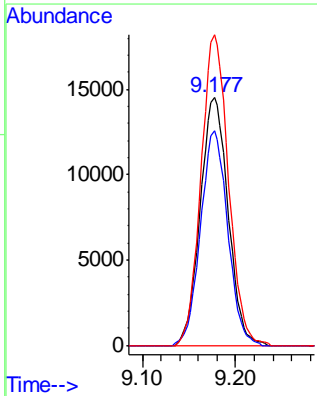
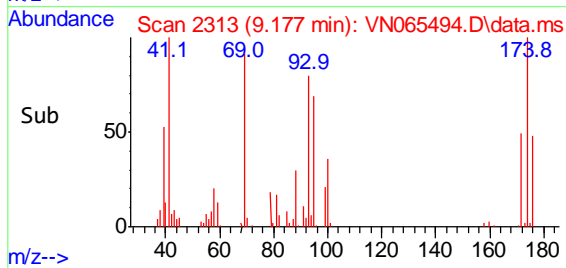
Tgt Ion: 63 Resp: 45176  
 Ion Ratio Lower Upper  
 63 100  
 65 30.1 24.1 36.1

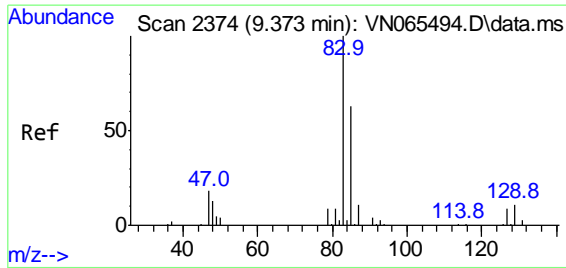


#40  
 Dibromomethane  
 Concen: 18.06 ug/l  
 RT: 9.177 min Scan# 2313  
 Delta R.T. 0.000 min  
 Lab File: VN065494.D  
 Acq: 13 Jan 2021 18:19



Tgt Ion: 93 Resp: 30293  
 Ion Ratio Lower Upper  
 93 100  
 95 84.3 0.0 168.6  
 174 123.2 0.0 246.4



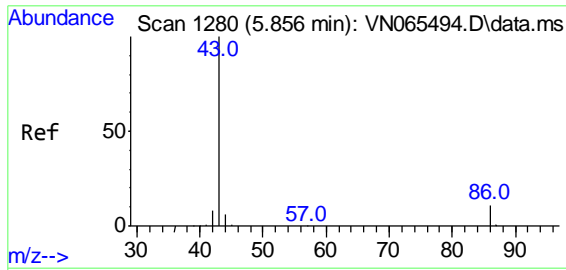
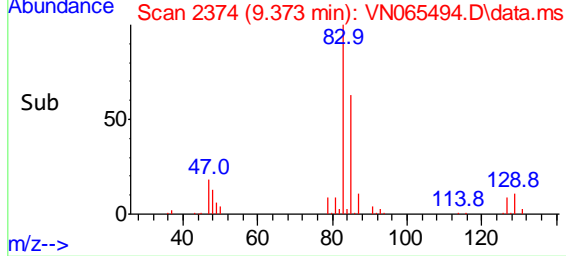
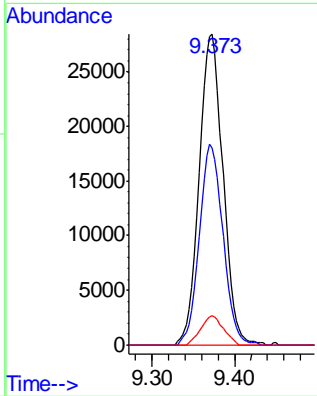
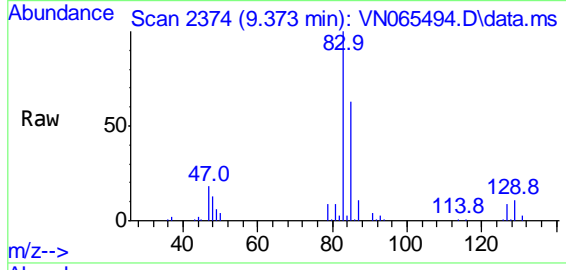


#41  
 Bromodichloromethane  
 Concen: 16.31 ug/l  
 RT: 9.373 min Scan# 2374  
 Delta R.T. 0.000 min  
 Lab File: VN065494.D  
 Acq: 13 Jan 2021 18:19

**Instrument :**  
 MSVOA\_N  
**ClientSampled :**  
 VSTDICCC020

Tgt Ion: 83 Resp: 57132

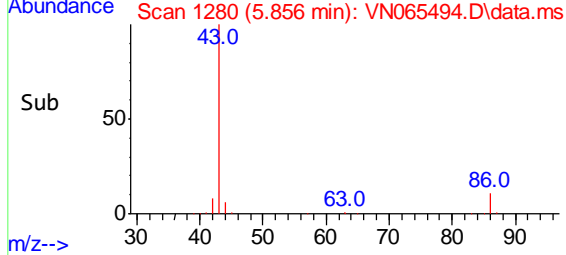
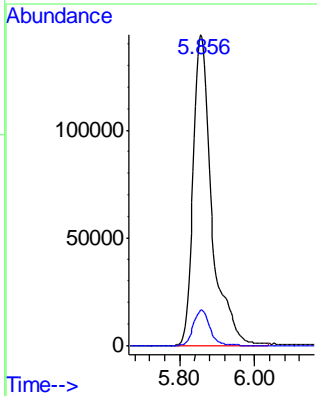
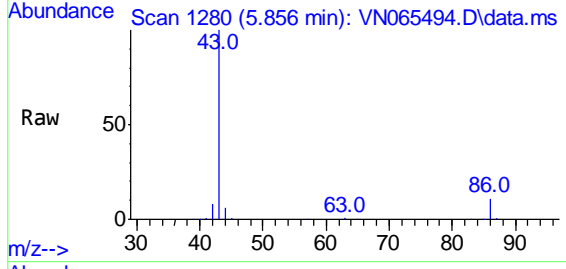
Ion	Ratio	Lower	Upper
83	100		
85	63.4	50.7	76.1
127	9.4	7.5	11.3



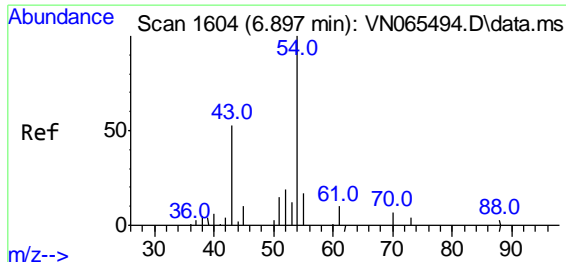
#42  
 Vinyl Acetate  
 Concen: 79.53 ug/l  
 RT: 5.856 min Scan# 1280  
 Delta R.T. 0.000 min  
 Lab File: VN065494.D  
 Acq: 13 Jan 2021 18:19

Tgt Ion: 43 Resp: 494089

Ion	Ratio	Lower	Upper
43	100		
86	9.9	7.9	11.9

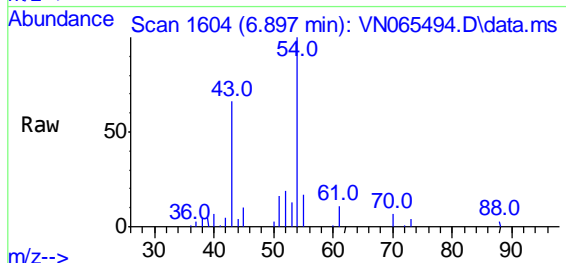




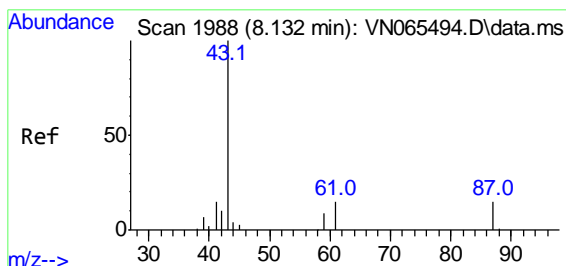
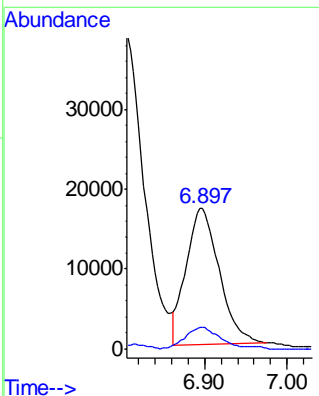
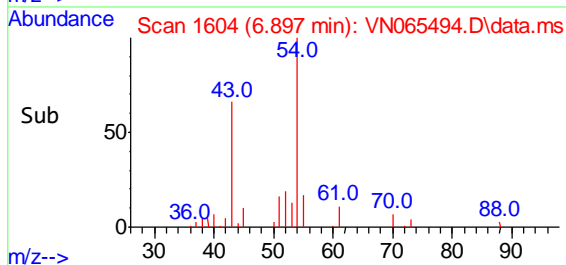


#43  
 Ethyl Acetate  
 Concen: 16.76 ug/l  
 RT: 6.897 min Scan# 1604  
 Delta R.T. 0.000 min  
 Lab File: VN065494.D  
 Acq: 13 Jan 2021 18:19

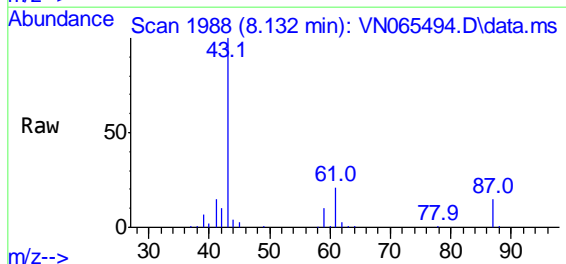
**Instrument :**  
 MSVOA\_N  
**ClientSampled :**  
 VSTDICCC020



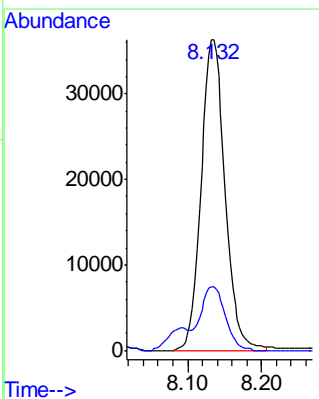
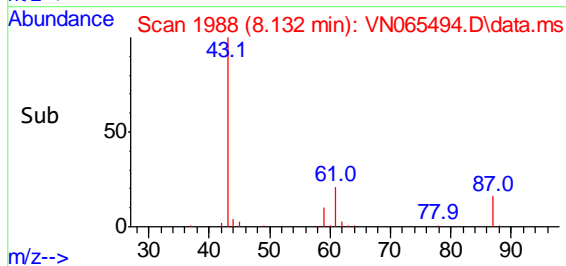
Tgt Ion: 43 Resp: 47647  
 Ion Ratio Lower Upper  
 43 100  
 45 16.1 12.9 19.3

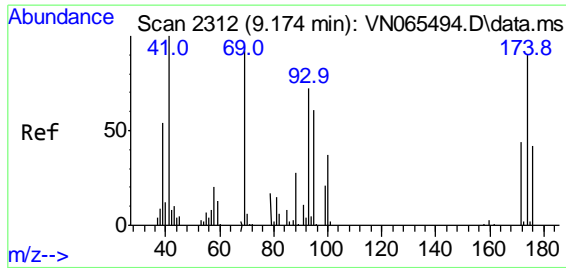


#44  
 Isopropyl Acetate  
 Concen: 15.39 ug/l  
 RT: 8.132 min Scan# 1988  
 Delta R.T. 0.000 min  
 Lab File: VN065494.D  
 Acq: 13 Jan 2021 18:19



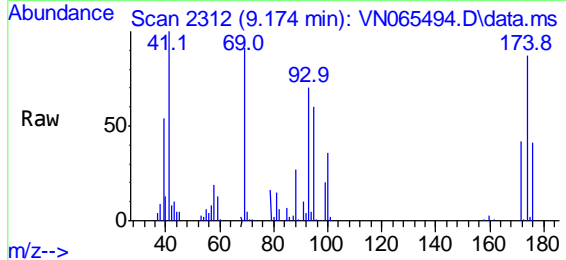
Tgt Ion: 43 Resp: 81461  
 Ion Ratio Lower Upper  
 43 100  
 61 21.0 16.8 25.2



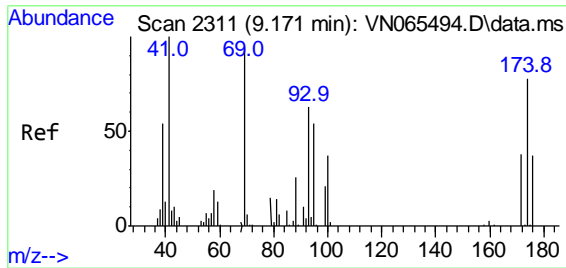
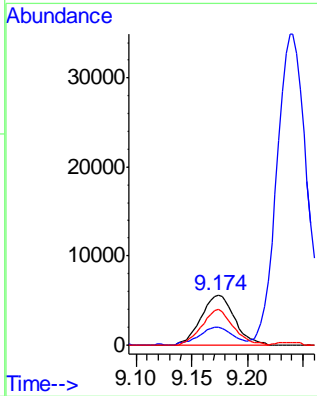
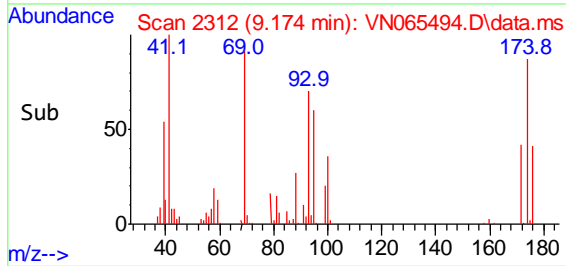


#45  
 1,4-Dioxane  
 Concen: 290.58 ug/l  
 RT: 9.174 min Scan# 2312  
 Delta R.T. 0.000 min  
 Lab File: VN065494.D  
 Acq: 13 Jan 2021 18:19

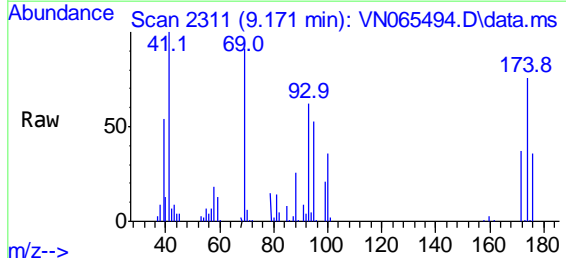
Instrument :  
 MSVOA\_N  
 ClientSampled :  
 VSTDICCC020



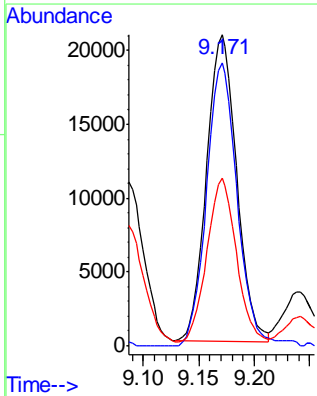
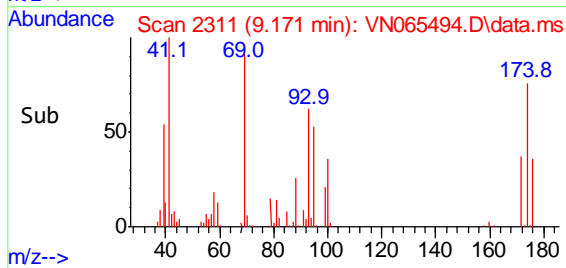
Tgt Ion: 88 Resp: 11567  
 Ion Ratio Lower Upper  
 88 100  
 43 35.4 28.3 42.5  
 58 67.2 53.8 80.6

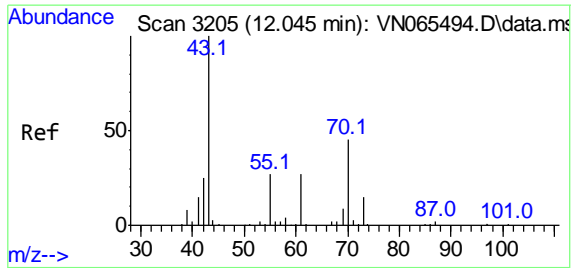


#46  
 Methyl methacrylate  
 Concen: 15.55 ug/l  
 RT: 9.171 min Scan# 2311  
 Delta R.T. 0.000 min  
 Lab File: VN065494.D  
 Acq: 13 Jan 2021 18:19



Tgt Ion: 41 Resp: 39185  
 Ion Ratio Lower Upper  
 41 100  
 69 92.5 46.3 138.8  
 39 53.5 26.8 80.3

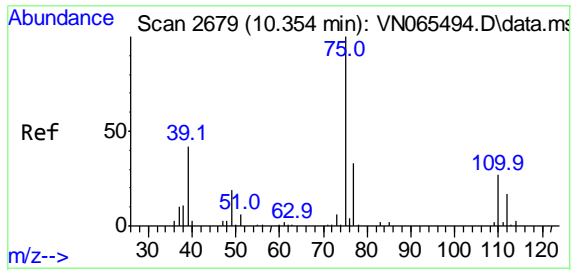
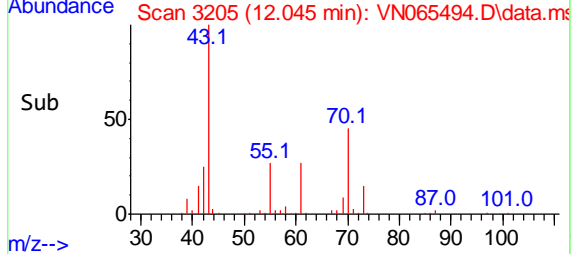
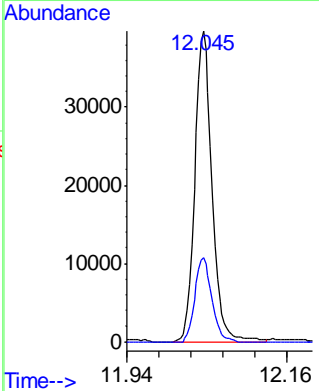
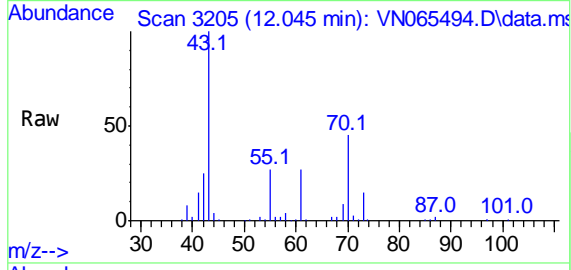




#47  
 n-amy1 Acetate  
 Concen: 14.77 ug/l  
 RT: 12.045 min Scan# 3205  
 Delta R.T. 0.000 min  
 Lab File: VN065494.D  
 Acq: 13 Jan 2021 18:19

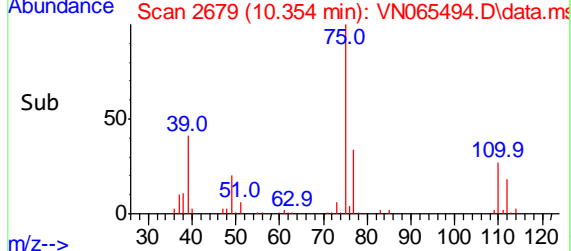
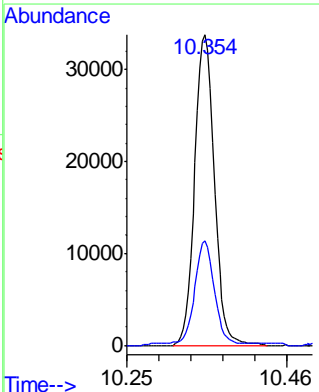
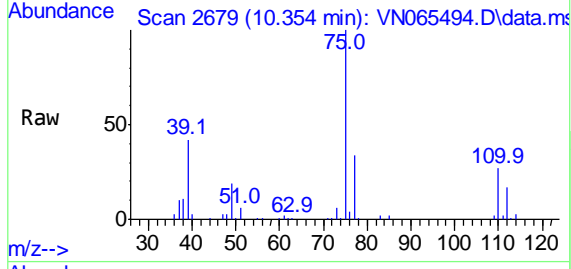
**Instrument :**  
 MSVOA\_N  
**ClientSampled :**  
 VSTDICCC020

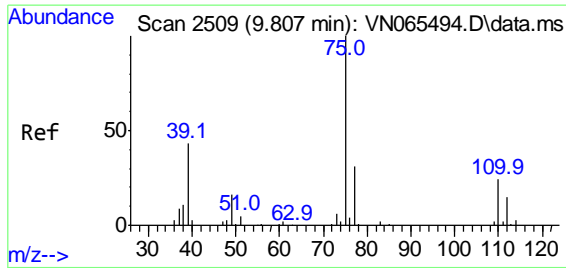
Tgt Ion: 43 Resp: 65595  
 Ion Ratio Lower Upper  
 43 100  
 55 26.6 21.3 31.9



#48  
 t-1,3-Dichloropropene  
 Concen: 15.47 ug/l  
 RT: 10.354 min Scan# 2679  
 Delta R.T. 0.000 min  
 Lab File: VN065494.D  
 Acq: 13 Jan 2021 18:19

Tgt Ion: 75 Resp: 60427  
 Ion Ratio Lower Upper  
 75 100  
 77 33.1 26.5 39.7

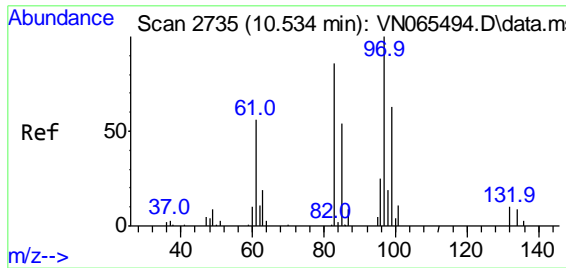
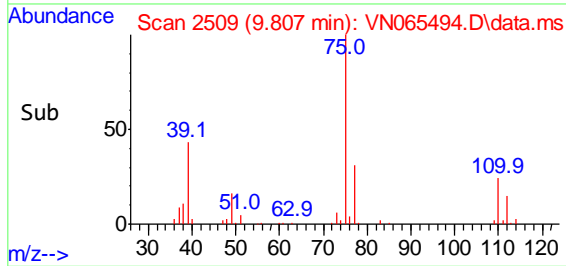
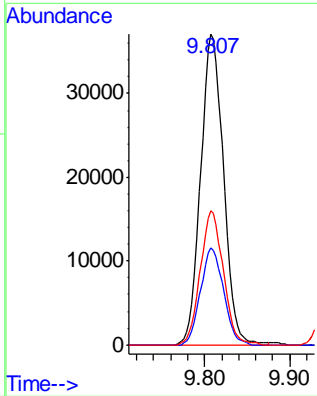
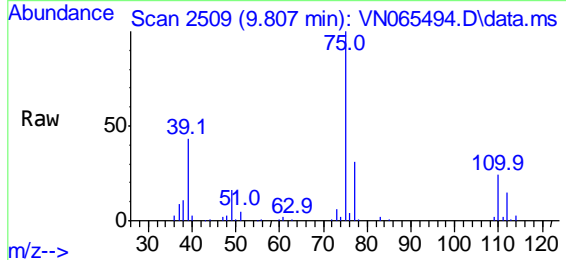




#49  
 cis-1,3-Dichloropropene  
 Concen: 16.52 ug/l  
 RT: 9.807 min Scan# 2509  
 Delta R.T. 0.000 min  
 Lab File: VN065494.D  
 Acq: 13 Jan 2021 18:19

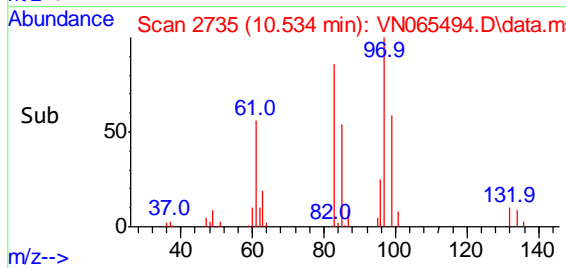
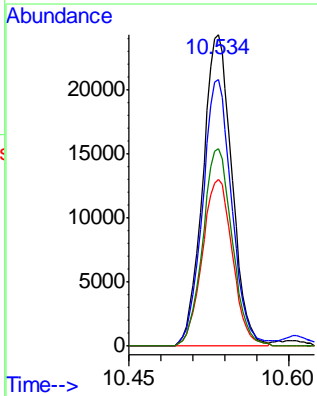
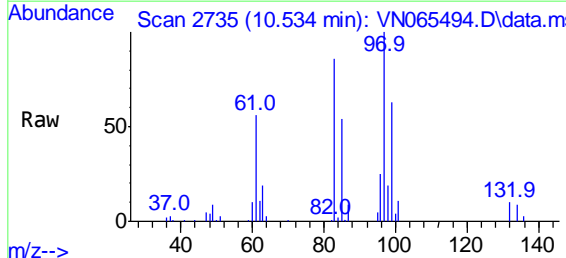
**Instrument :**  
 MSVOA\_N  
**ClientSampled :**  
 VSTDICCC020

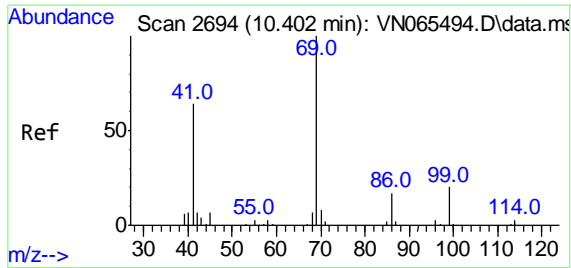
Tgt Ion	Resp	Lower	Upper
75	68936		
75	100		
77	31.0	24.8	37.2
39	43.0	34.4	51.6



#50  
 1,1,2-Trichloroethane  
 Concen: 18.52 ug/l  
 RT: 10.534 min Scan# 2735  
 Delta R.T. 0.000 min  
 Lab File: VN065494.D  
 Acq: 13 Jan 2021 18:19

Tgt Ion	Resp	Lower	Upper
97	43988		
97	100		
83	85.5	68.4	102.6
85	53.5	42.8	64.2
99	63.4	50.7	76.1



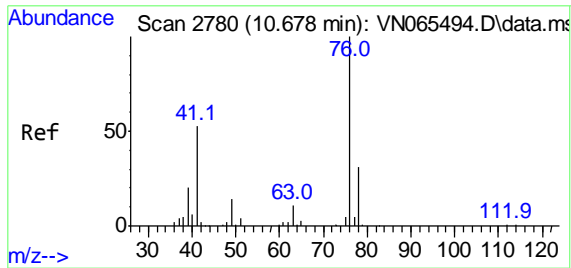
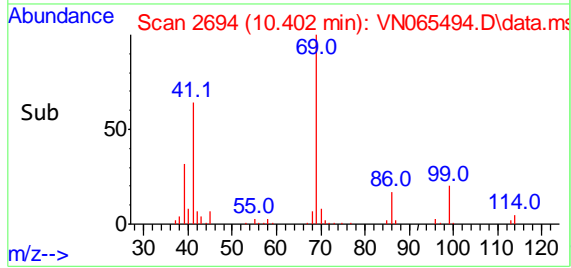
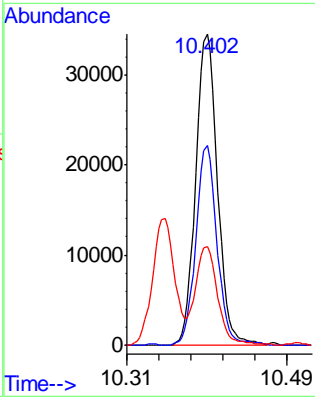
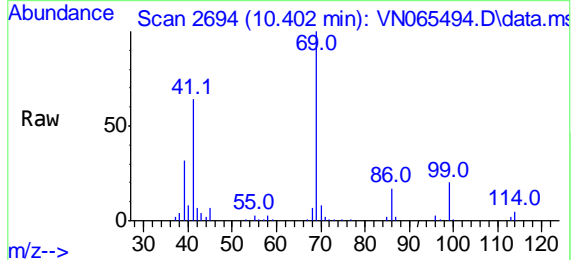


#51  
 Ethyl methacrylate  
 Concen: 16.36 ug/l  
 RT: 10.402 min Scan# 2694  
 Delta R.T. 0.000 min  
 Lab File: VN065494.D  
 Acq: 13 Jan 2021 18:19

Instrument :  
 MSVOA\_N  
 ClientSampled :  
 VSTDICCC020

Tgt Ion: 69 Resp: 59526

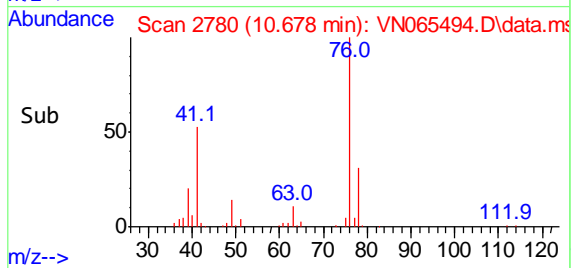
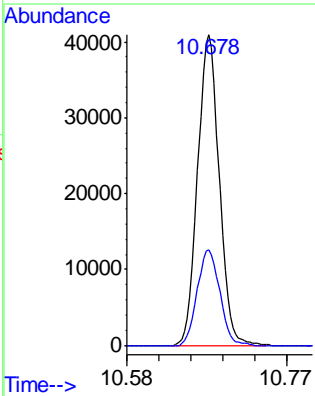
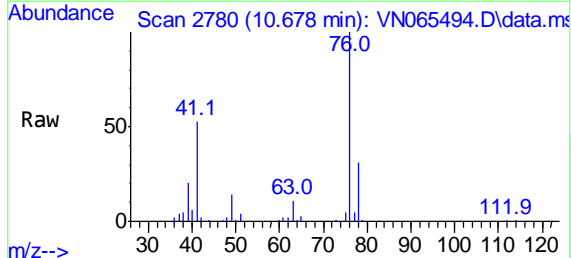
Ion	Ratio	Lower	Upper
69	100		
41	63.8	31.9	95.7
39	31.1	15.6	46.7

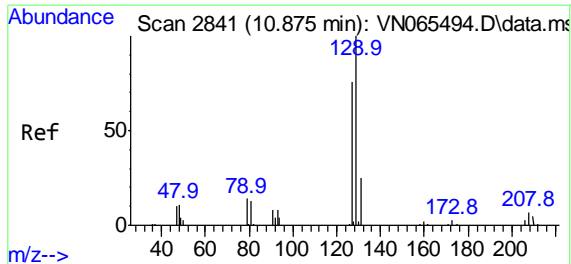


#52  
 1,3-Dichloropropane  
 Concen: 18.27 ug/l  
 RT: 10.678 min Scan# 2780  
 Delta R.T. 0.000 min  
 Lab File: VN065494.D  
 Acq: 13 Jan 2021 18:19

Tgt Ion: 76 Resp: 72359

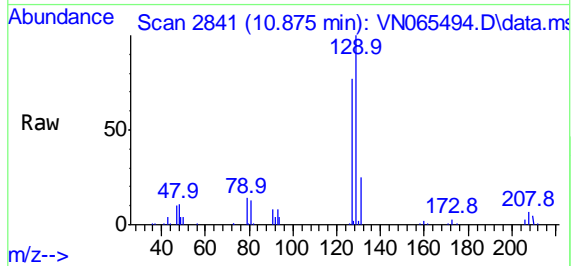
Ion	Ratio	Lower	Upper
76	100		
78	32.1	0.0	64.2



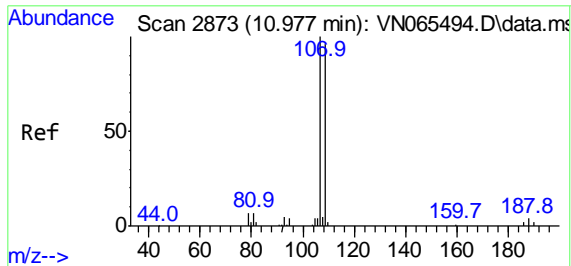
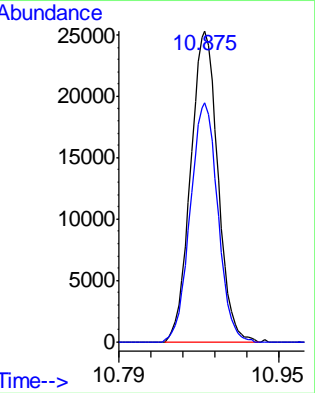
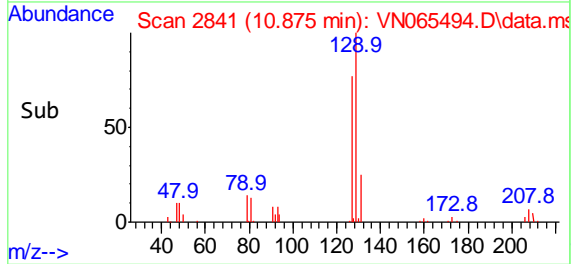


#53  
 Dibromochloromethane  
 Concen: 16.60 ug/l  
 RT: 10.875 min Scan# 2841  
 Delta R.T. 0.000 min  
 Lab File: VN065494.D  
 Acq: 13 Jan 2021 18:19

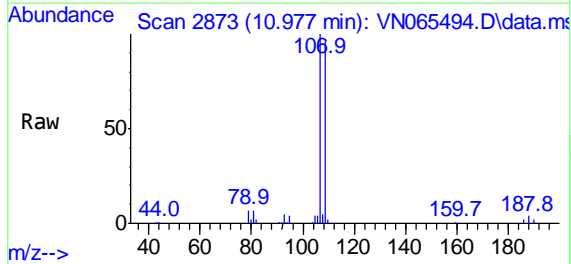
**Instrument :**  
 MSVOA\_N  
**ClientSampled :**  
 VSTDICCC020



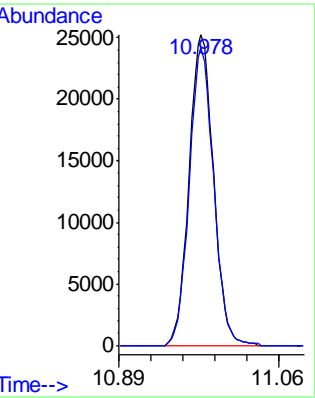
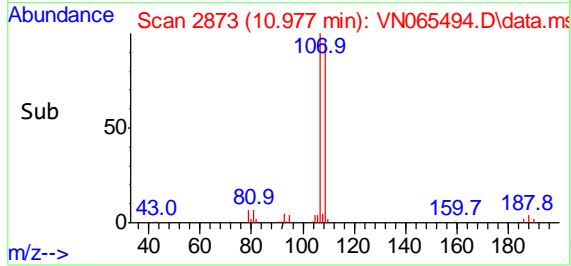
Tgt Ion:129 Resp: 46234  
 Ion Ratio Lower Upper  
 129 100  
 127 77.7 38.9 116.6

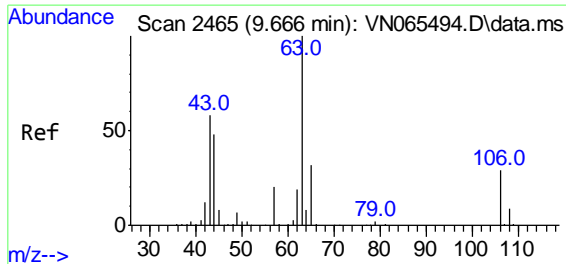


#54  
 1,2-Dibromoethane  
 Concen: 18.07 ug/l  
 RT: 10.977 min Scan# 2873  
 Delta R.T. 0.000 min  
 Lab File: VN065494.D  
 Acq: 13 Jan 2021 18:19



Tgt Ion:107 Resp: 45934  
 Ion Ratio Lower Upper  
 107 100  
 109 95.8 76.6 115.0



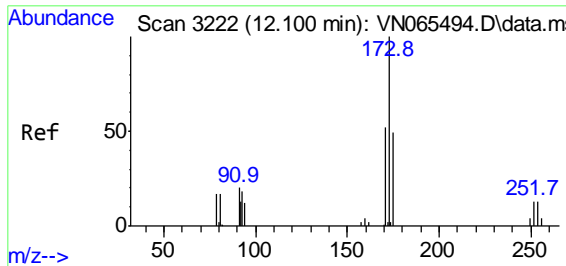
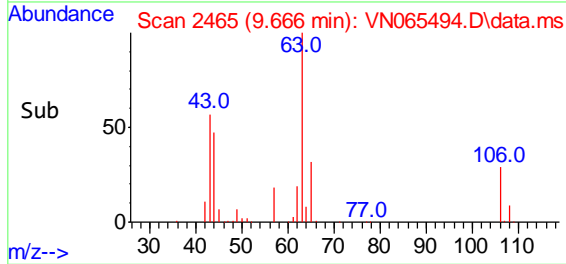
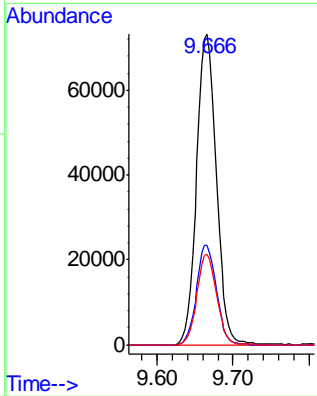
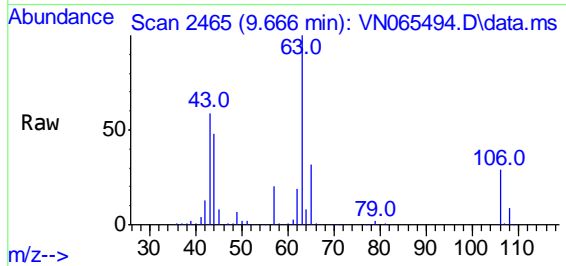


#55  
 2-Chloroethyl vinyl ether  
 Concen: 72.75 ug/l  
 RT: 9.666 min Scan# 2465  
 Delta R.T. 0.000 min  
 Lab File: VN065494.D  
 Acq: 13 Jan 2021 18:19

**Instrument :**  
 MSVOA\_N  
**ClientSampled :**  
 VSTDICCC020

Tgt Ion: 63 Resp: 131553

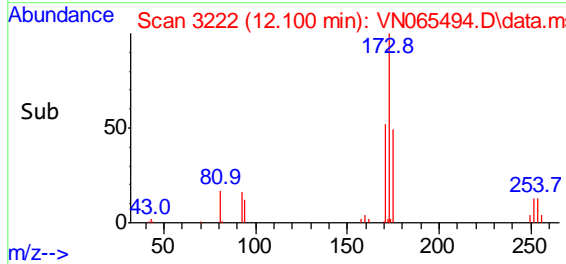
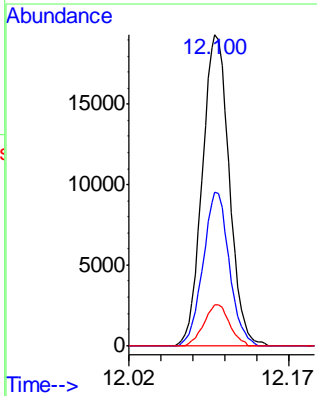
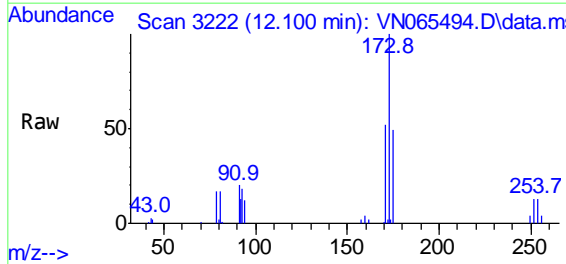
Ion	Ratio	Lower	Upper
63	100		
65	32.1	25.7	38.5
106	28.9	23.1	34.7

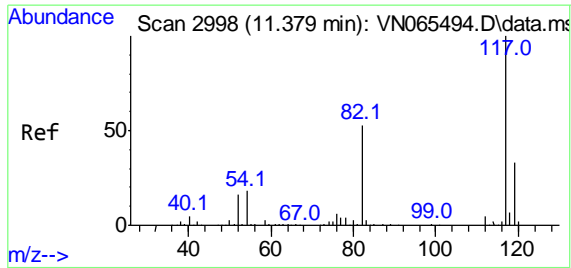


#56  
 Bromoform  
 Concen: 16.21 ug/l  
 RT: 12.100 min Scan# 3222  
 Delta R.T. 0.000 min  
 Lab File: VN065494.D  
 Acq: 13 Jan 2021 18:19

Tgt Ion: 173 Resp: 34905

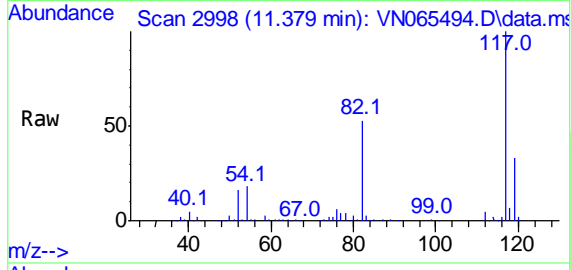
Ion	Ratio	Lower	Upper
173	100		
175	47.8	38.2	57.4
254	12.3	9.8	14.8



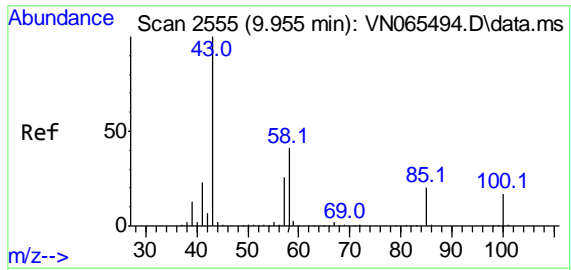
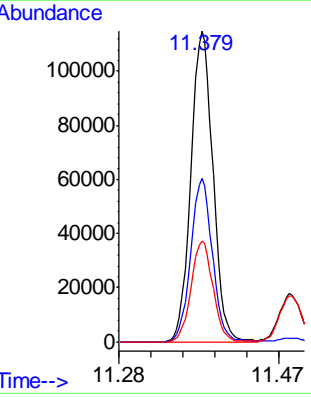
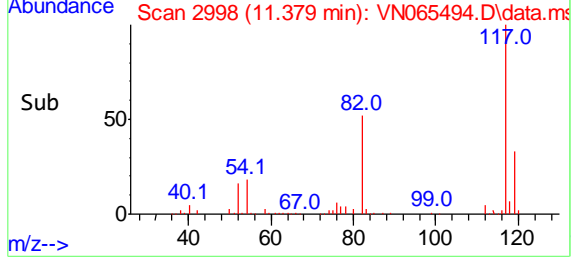


#57  
 Chlorobenzene-d5  
 Concen: 30.00 ug/l  
 RT: 11.379 min Scan# 2998  
 Delta R.T. 0.000 min  
 Lab File: VN065494.D  
 Acq: 13 Jan 2021 18:19

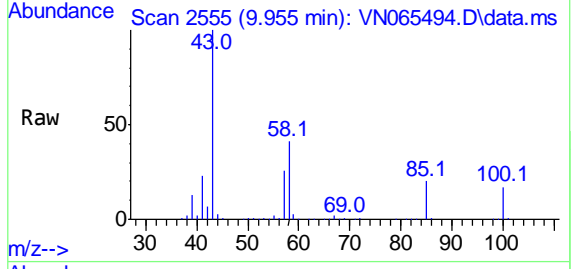
**Instrument :**  
 MSVOA\_N  
**ClientSampled :**  
 VSTDICCC020



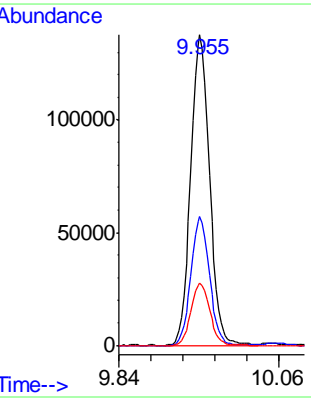
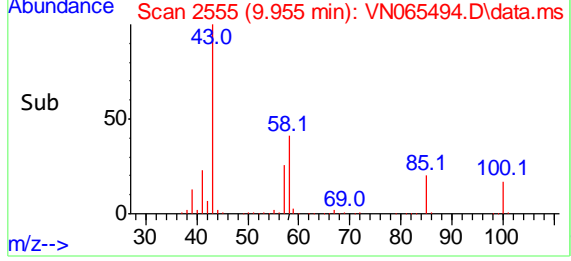
Tgt Ion: 117 Resp: 200519  
 Ion Ratio Lower Upper  
 117 100  
 82 51.6 41.3 61.9  
 119 32.1 25.7 38.5



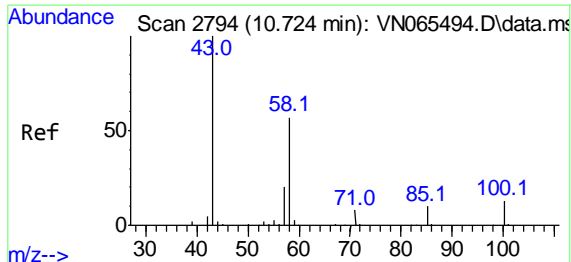
#58  
 4-Methyl-2-Pentanone  
 Concen: 83.11 ug/l  
 RT: 9.955 min Scan# 2555  
 Delta R.T. 0.000 min  
 Lab File: VN065494.D  
 Acq: 13 Jan 2021 18:19



Tgt Ion: 43 Resp: 250194  
 Ion Ratio Lower Upper  
 43 100  
 58 40.9 32.7 49.1  
 85 20.0 16.0 24.0

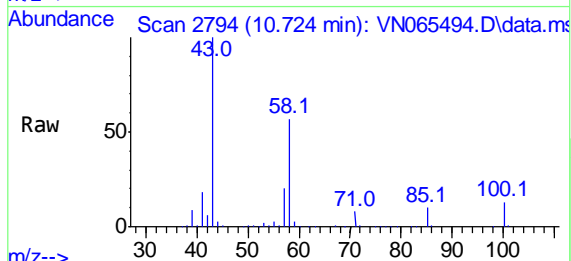






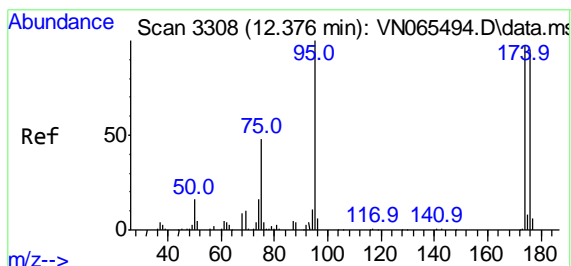
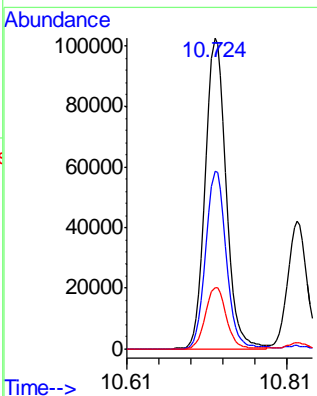
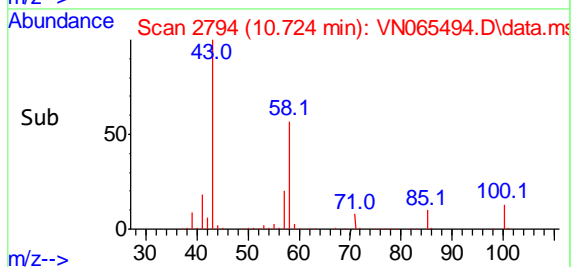
#59  
 2-Hexanone  
 Concen: 80.54 ug/l  
 RT: 10.724 min Scan# 2794  
 Delta R.T. 0.000 min  
 Lab File: VN065494.D  
 Acq: 13 Jan 2021 18:19

Instrument :  
 MSVOA\_N  
 ClientSampled :  
 VSTDICCC020

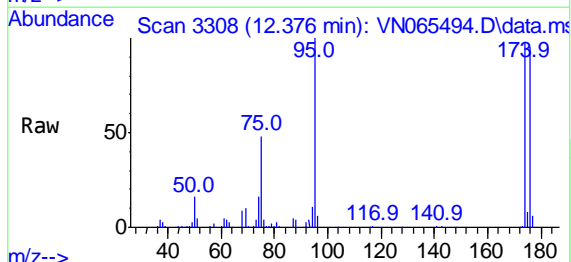


Tgt Ion: 43 Resp: 177259

Ion	Ratio	Lower	Upper
43	100		
58	56.7	45.4	68.0
57	19.8	15.8	23.8

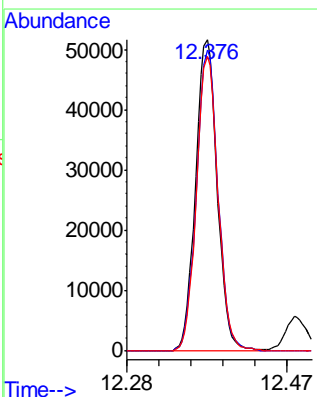
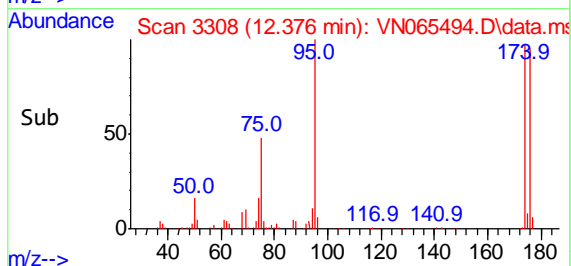


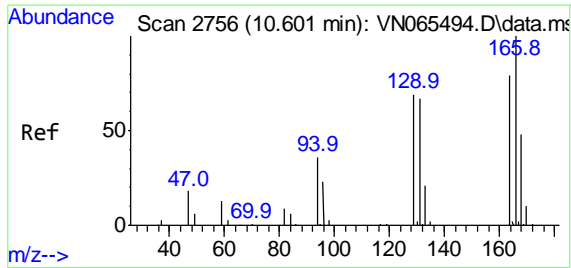
#60  
 4-Bromofluorobenzene  
 Concen: 28.03 ug/l  
 RT: 12.376 min Scan# 3308  
 Delta R.T. 0.000 min  
 Lab File: VN065494.D  
 Acq: 13 Jan 2021 18:19



Tgt Ion: 95 Resp: 88315

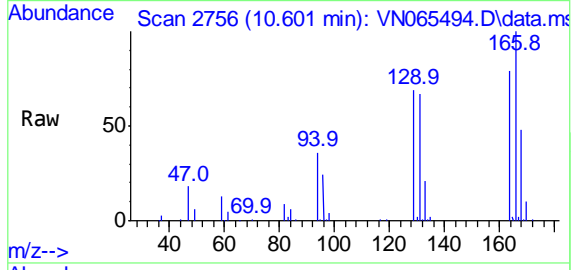
Ion	Ratio	Lower	Upper
95	100		
174	96.3	77.0	115.6
176	94.7	75.8	113.6





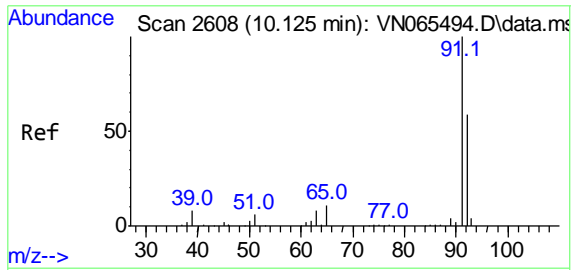
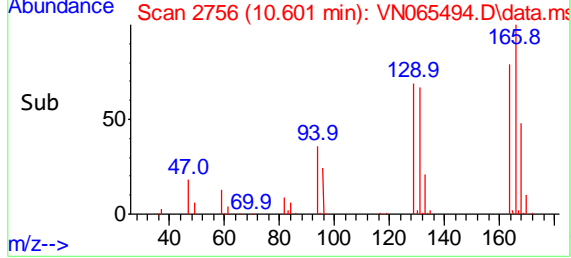
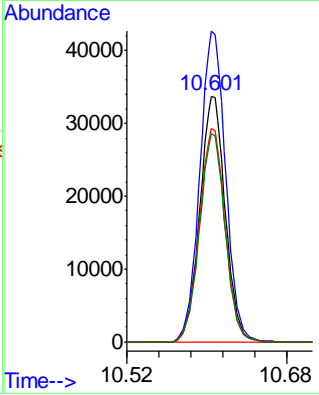
#61  
 Tetrachloroethene  
 Concen: 19.55 ug/l  
 RT: 10.601 min Scan# 2756  
 Delta R.T. 0.000 min  
 Lab File: VN065494.D  
 Acq: 13 Jan 2021 18:19

Instrument : MSVOA\_N  
 Client Sampled : VSTDICCC020

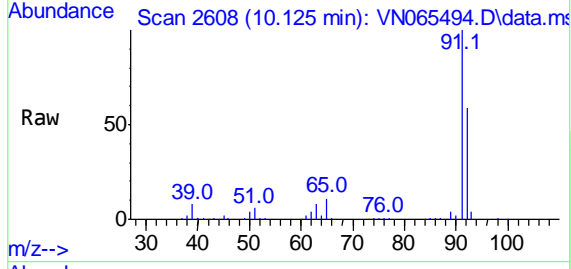


Tgt Ion:164 Resp: 59355

Ion	Ratio	Lower	Upper
164	100		
166	126.5	101.2	151.8
129	87.1	69.7	104.5
131	84.8	67.8	101.8

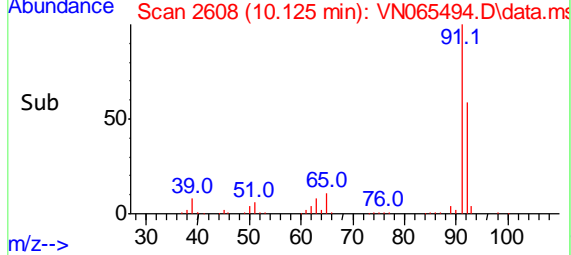
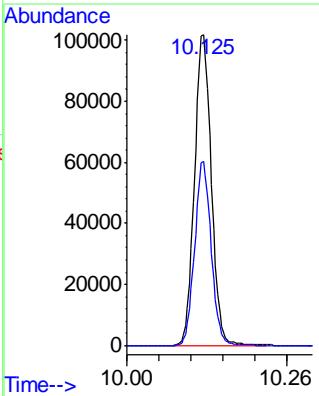


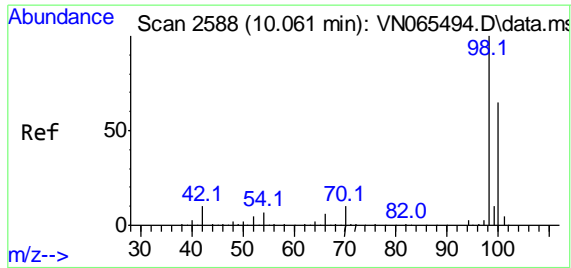
#62  
 Toluene  
 Concen: 17.82 ug/l  
 RT: 10.125 min Scan# 2608  
 Delta R.T. 0.000 min  
 Lab File: VN065494.D  
 Acq: 13 Jan 2021 18:19



Tgt Ion: 91 Resp: 189423

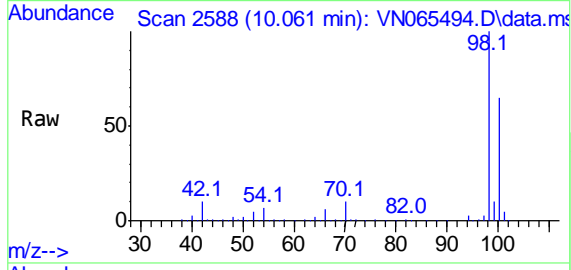
Ion	Ratio	Lower	Upper
91	100		
92	57.8	46.2	69.4



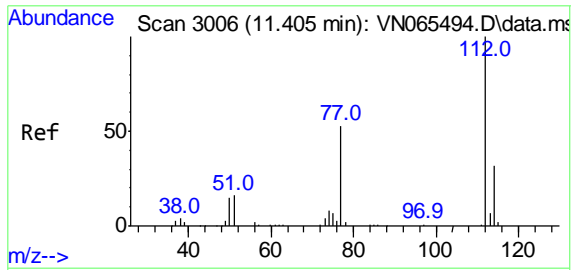
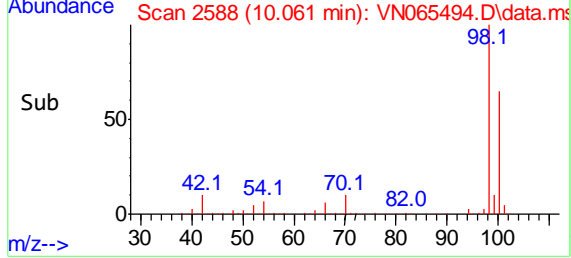
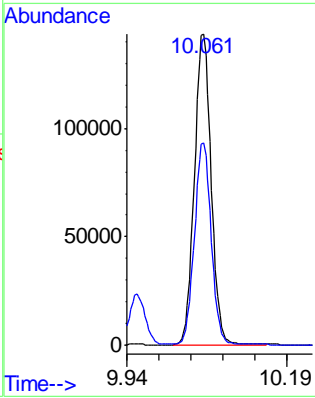


#63  
 Toluene-d8  
 Concen: 29.86 ug/l  
 RT: 10.061 min Scan# 2588  
 Delta R.T. 0.000 min  
 Lab File: VN065494.D  
 Acq: 13 Jan 2021 18:19

**Instrument :**  
 MSVOA\_N  
**ClientSampled :**  
 VSTDICCC020

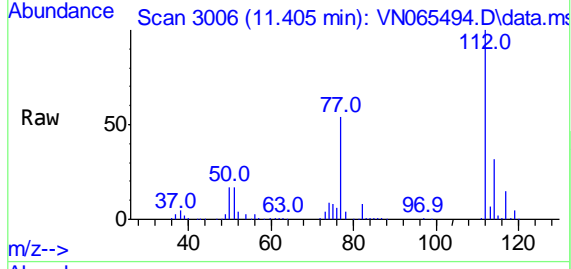


Tgt Ion: 98 Resp: 265063  
 Ion Ratio Lower Upper  
 98 100  
 100 64.9 51.9 77.9

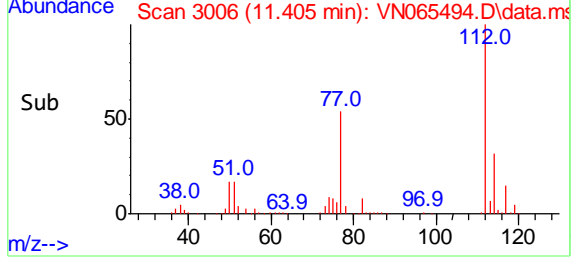
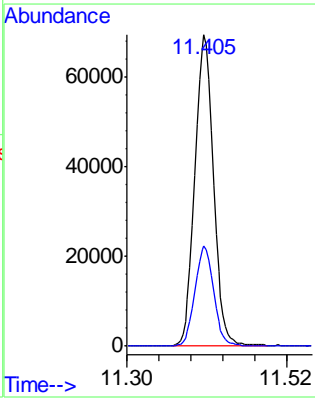


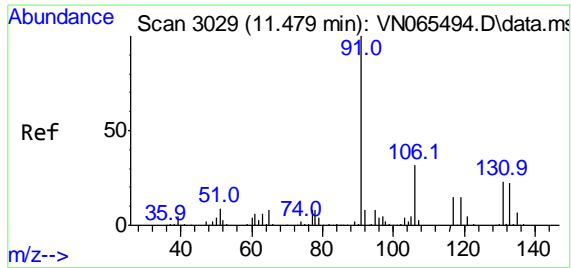
#64  
 Chlorobenzene  
 Concen: 18.41 ug/l  
 RT: 11.405 min Scan# 3006  
 Delta R.T. 0.000 min  
 Lab File: VN065494.D  
 Acq: 13 Jan 2021 18:19

**Instrument :**  
 MSVOA\_N  
**ClientSampled :**  
 VSTDICCC020



Tgt Ion: 112 Resp: 121838  
 Ion Ratio Lower Upper  
 112 100  
 114 31.9 25.5 38.3



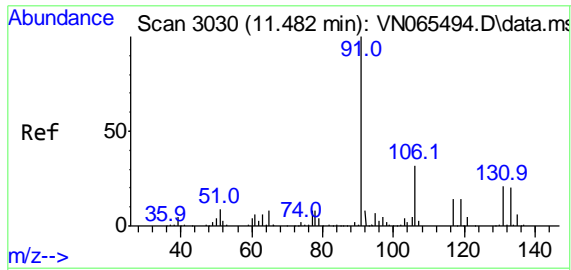
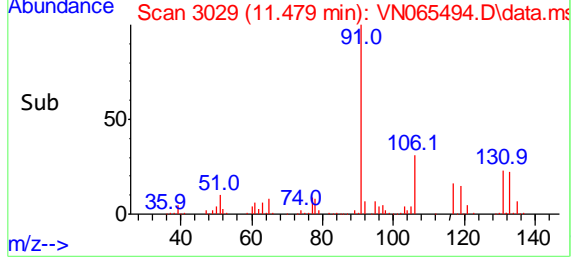
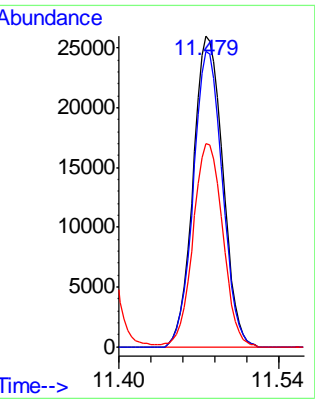
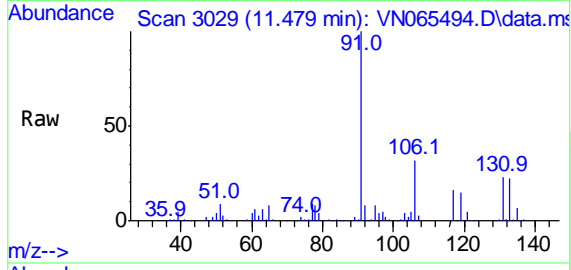


#65  
 1,1,1,2-Tetrachloroethane  
 Concen: 17.77 ug/l  
 RT: 11.479 min Scan# 3029  
 Delta R.T. 0.000 min  
 Lab File: VN065494.D  
 Acq: 13 Jan 2021 18:19

**Instrument :**  
 MSVOA\_N  
**ClientSampled :**  
 VSTDICCC020

Tgt Ion:131 Resp: 46150

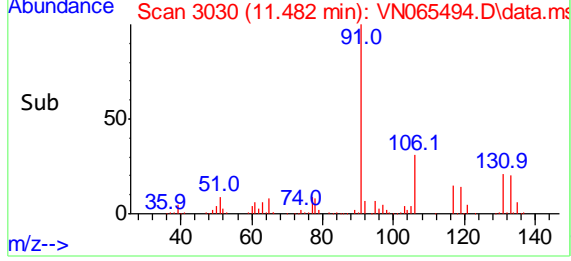
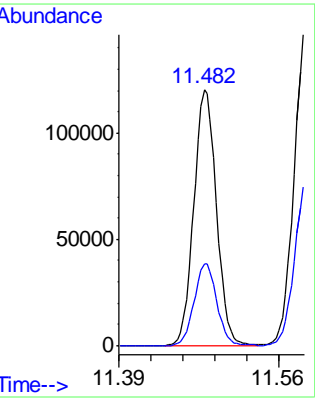
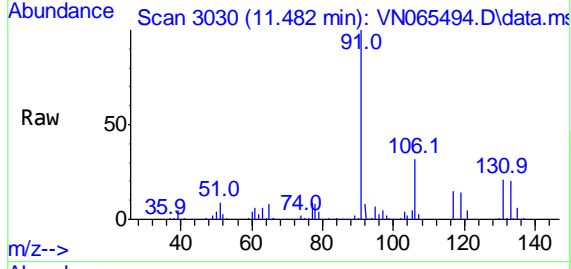
Ion	Ratio	Lower	Upper
131	100		
133	93.1	0.0	186.2
119	65.8	0.0	131.6

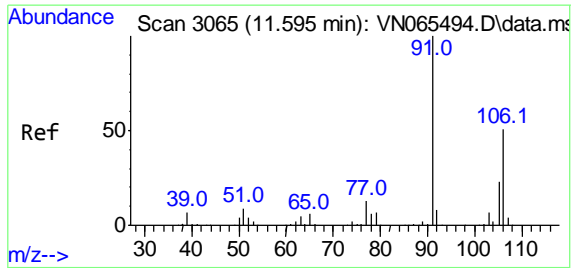


#66  
 Ethyl Benzene  
 Concen: 17.20 ug/l  
 RT: 11.482 min Scan# 3030  
 Delta R.T. 0.000 min  
 Lab File: VN065494.D  
 Acq: 13 Jan 2021 18:19

Tgt Ion: 91 Resp: 202959

Ion	Ratio	Lower	Upper
91	100		
106	31.9	25.5	38.3

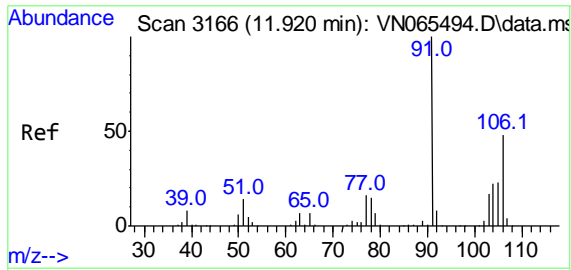
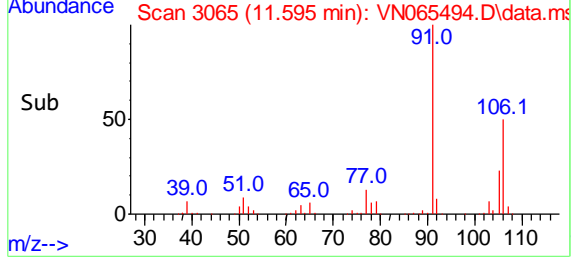
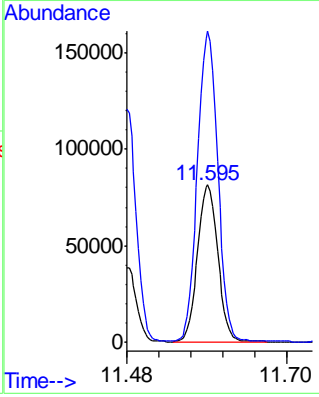
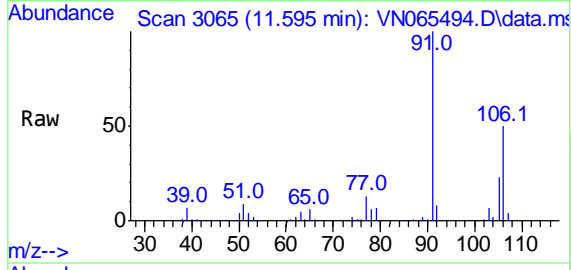




#67  
 m/p-Xylenes  
 Concen: 35.53 ug/l  
 RT: 11.595 min Scan# 3065  
 Delta R.T. 0.000 min  
 Lab File: VN065494.D  
 Acq: 13 Jan 2021 18:19

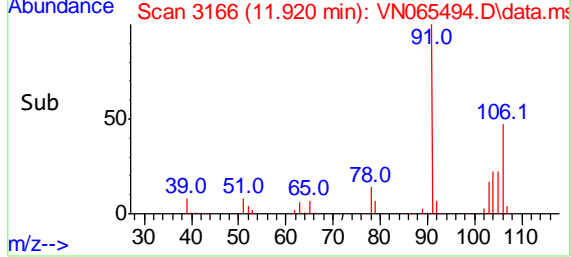
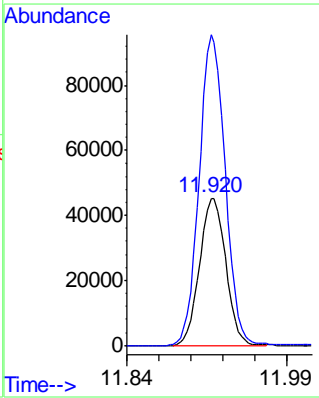
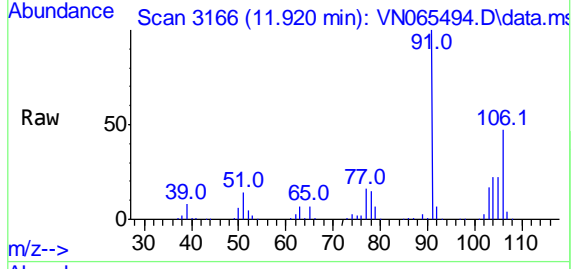
**Instrument :**  
 MSVOA\_N  
**ClientSampled :**  
 VSTDICCC020

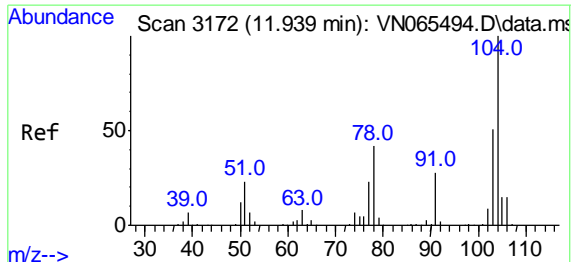
Tgt Ion:106 Resp: 159069  
 Ion Ratio Lower Upper  
 106 100  
 91 198.8 159.0 238.6



#68  
 o-Xylene  
 Concen: 17.71 ug/l  
 RT: 11.920 min Scan# 3166  
 Delta R.T. 0.000 min  
 Lab File: VN065494.D  
 Acq: 13 Jan 2021 18:19

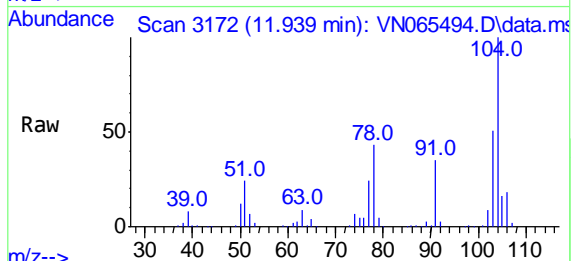
Tgt Ion:106 Resp: 76699  
 Ion Ratio Lower Upper  
 106 100  
 91 209.3 104.7 313.9



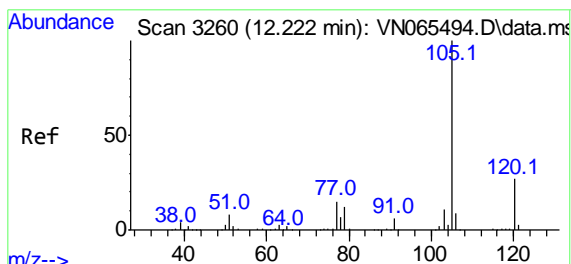
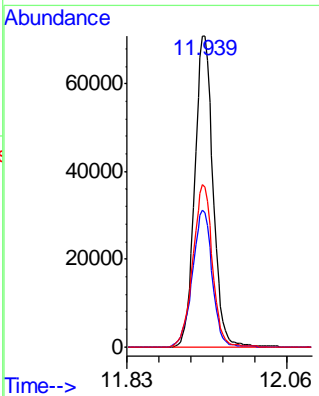
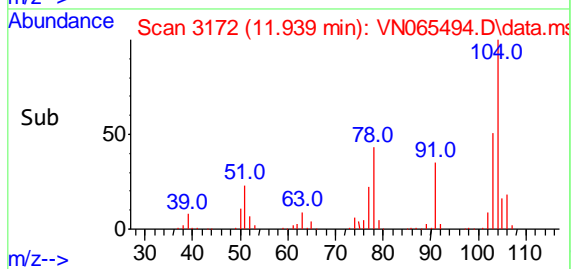


#69  
 Styrene  
 Concen: 17.41 ug/l  
 RT: 11.939 min Scan# 3172  
 Delta R.T. 0.000 min  
 Lab File: VN065494.D  
 Acq: 13 Jan 2021 18:19

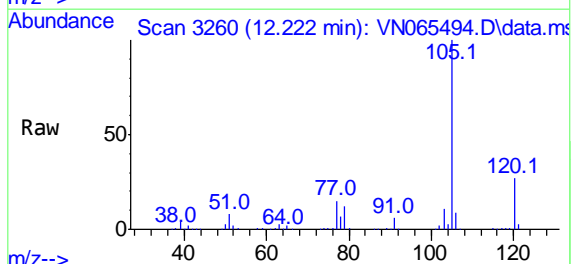
**Instrument :**  
 MSVOA\_N  
**ClientSampled :**  
 VSTDICCC020



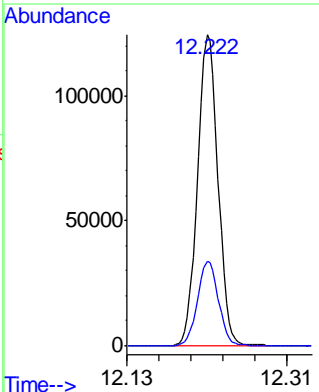
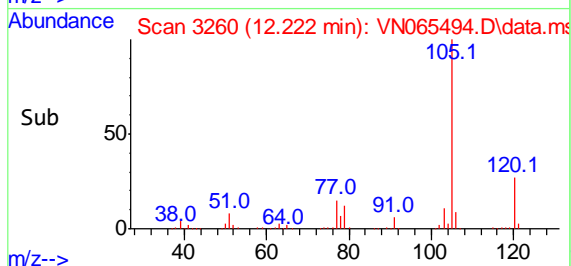
Tgt Ion:104 Resp: 126682  
 Ion Ratio Lower Upper  
 104 100  
 78 47.5 38.0 57.0  
 103 55.4 44.3 66.5

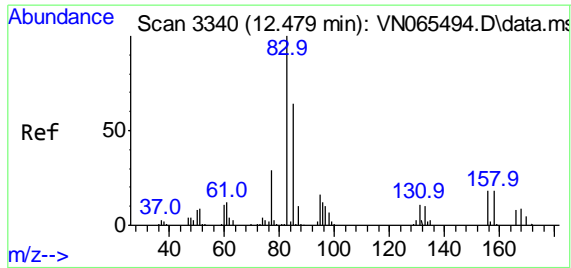


#70  
 Isopropylbenzene  
 Concen: 17.45 ug/l  
 RT: 12.222 min Scan# 3260  
 Delta R.T. 0.000 min  
 Lab File: VN065494.D  
 Acq: 13 Jan 2021 18:19



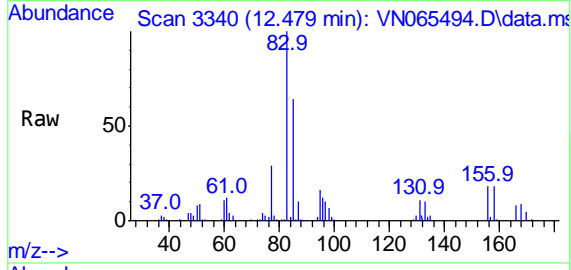
Tgt Ion:105 Resp: 200980  
 Ion Ratio Lower Upper  
 105 100  
 120 27.6 19.3 35.9





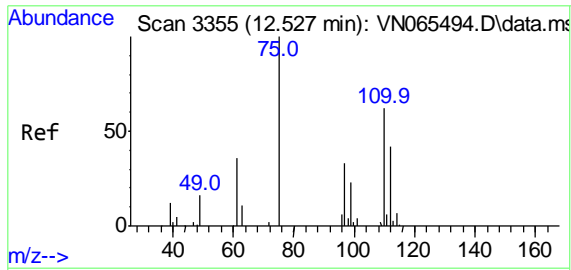
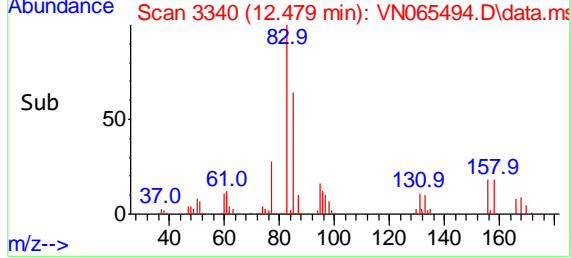
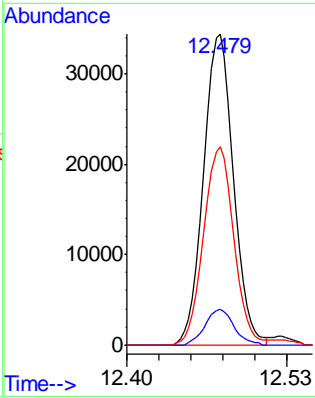
#71  
 1,1,2,2-Tetrachloroethane  
 Concen: 18.26 ug/l  
 RT: 12.479 min Scan# 3340  
 Delta R.T. 0.000 min  
 Lab File: VN065494.D  
 Acq: 13 Jan 2021 18:19

Instrument :  
 MSVOA\_N  
 ClientSampled :  
 VSTDICCC020

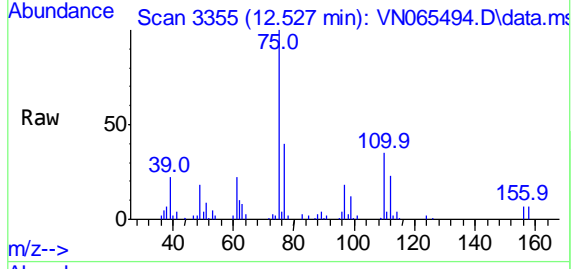


Tgt Ion: 83 Resp: 57737

Ion	Ratio	Lower	Upper
83	100		
131	10.9	5.5	16.4
85	64.3	32.1	96.5

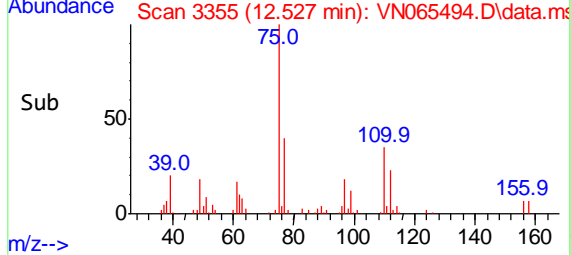
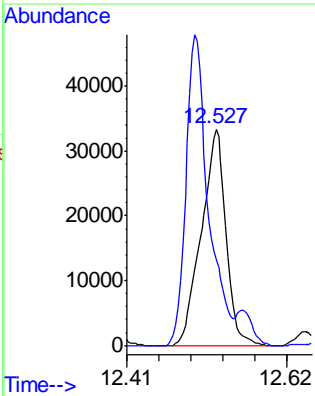


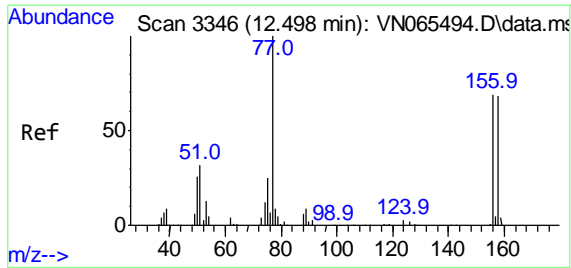
#72  
 1,2,3-Trichloropropane  
 Concen: 24.54 ug/l  
 RT: 12.527 min Scan# 3355  
 Delta R.T. 0.000 min  
 Lab File: VN065494.D  
 Acq: 13 Jan 2021 18:19



Tgt Ion: 75 Resp: 76899

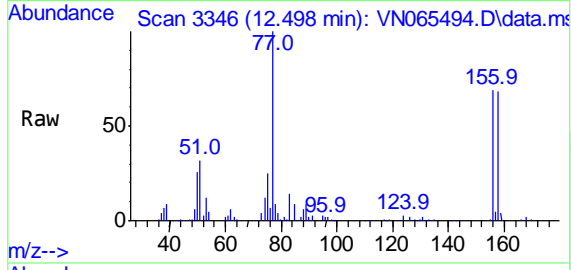
Ion	Ratio	Lower	Upper
75	100		
77	130.0	0.0	366.4





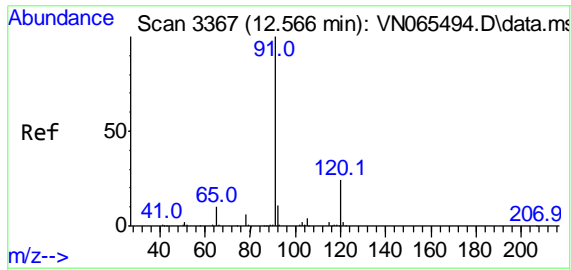
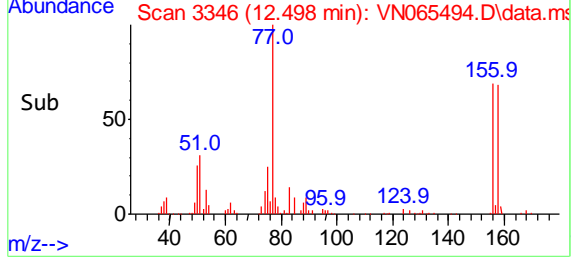
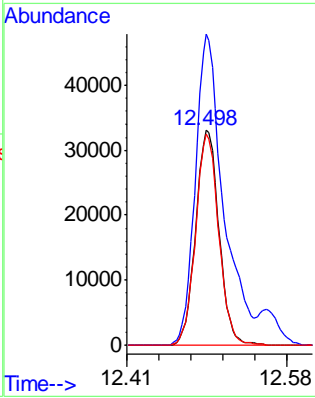
#73  
 Bromobenzene  
 Concen: 18.74 ug/l  
 RT: 12.498 min Scan# 3346  
 Delta R.T. 0.000 min  
 Lab File: VN065494.D  
 Acq: 13 Jan 2021 18:19

**Instrument :**  
 MSVOA\_N  
**ClientSampled :**  
 VSTDICCC020

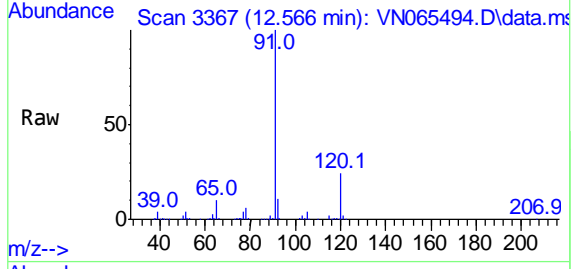


Tgt Ion: 156 Resp: 57310

Ion	Ratio	Lower	Upper
156	100		
77	174.4	0.0	348.8
158	97.4	0.0	194.8

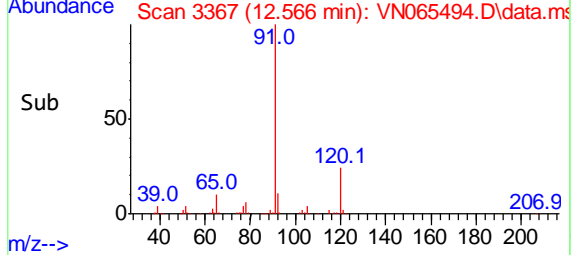
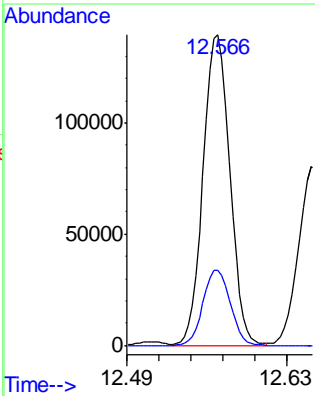


#74  
 n-propylbenzene  
 Concen: 17.12 ug/l  
 RT: 12.566 min Scan# 3367  
 Delta R.T. 0.000 min  
 Lab File: VN065494.D  
 Acq: 13 Jan 2021 18:19

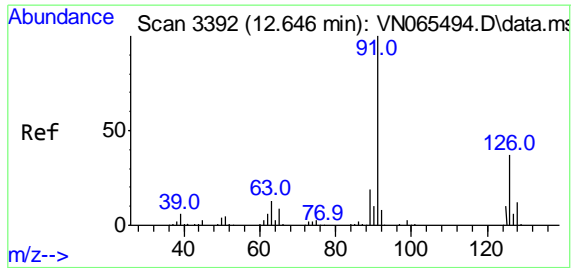


Tgt Ion: 91 Resp: 223800

Ion	Ratio	Lower	Upper
91	100		
120	24.7	0.0	49.4

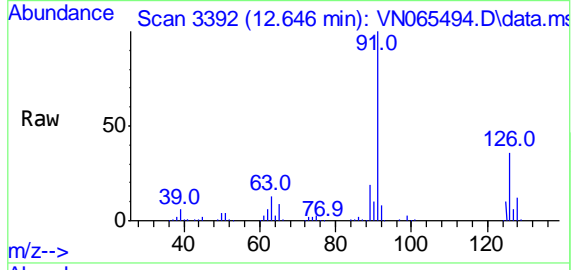




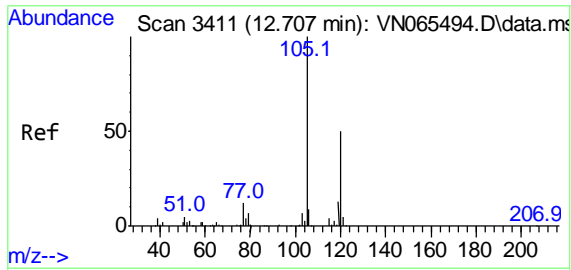
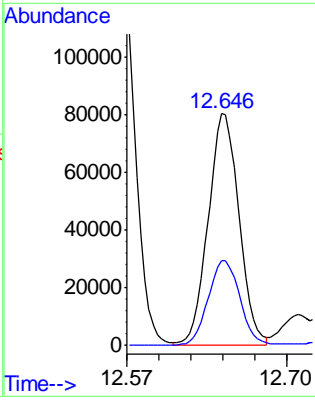
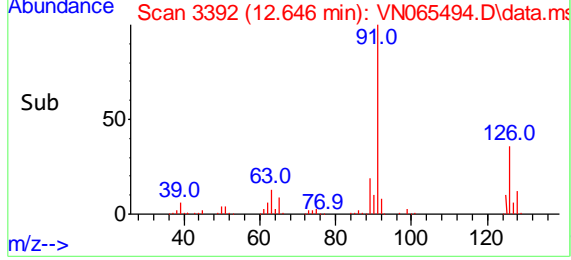


#75  
 2-Chlorotoluene  
 Concen: 17.55 ug/l  
 RT: 12.646 min Scan# 3392  
 Delta R.T. 0.000 min  
 Lab File: VN065494.D  
 Acq: 13 Jan 2021 18:19

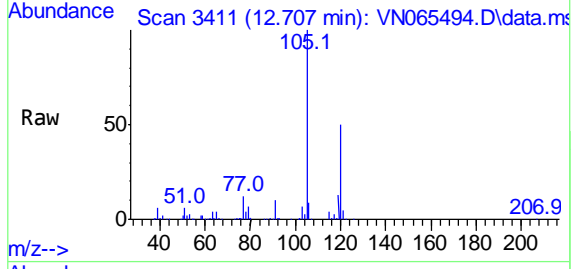
**Instrument :**  
 MSVOA\_N  
**ClientSampled :**  
 VSTDICCC020



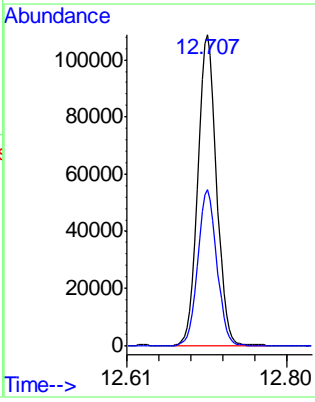
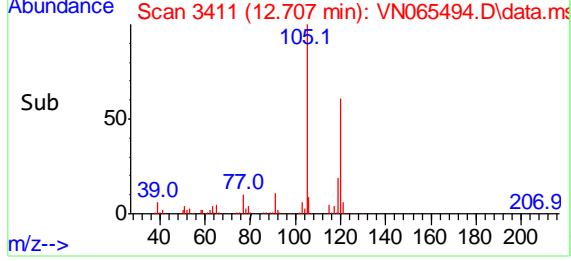
Tgt Ion: 91 Resp: 136499  
 Ion Ratio Lower Upper  
 91 100  
 126 37.1 0.0 74.2

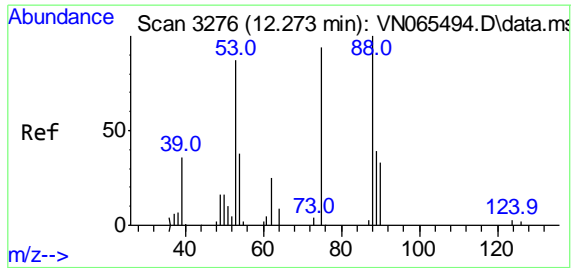


#76  
 1,3,5-Trimethylbenzene  
 Concen: 17.51 ug/l  
 RT: 12.707 min Scan# 3411  
 Delta R.T. 0.000 min  
 Lab File: VN065494.D  
 Acq: 13 Jan 2021 18:19



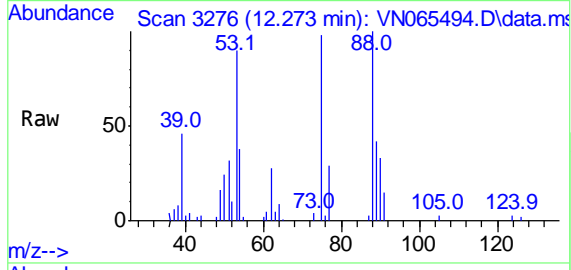
Tgt Ion: 105 Resp: 172299  
 Ion Ratio Lower Upper  
 105 100  
 120 50.8 0.0 101.6





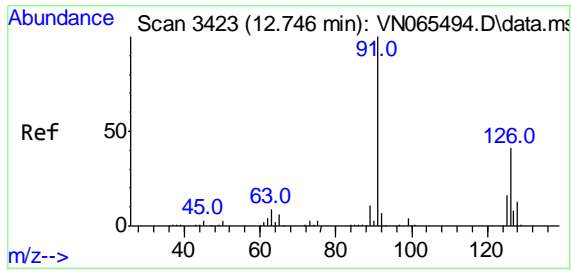
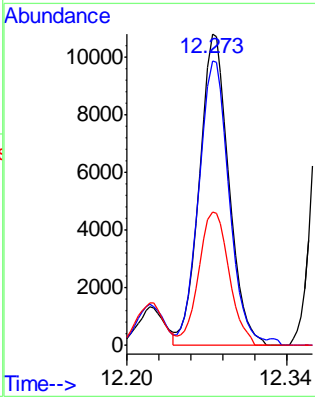
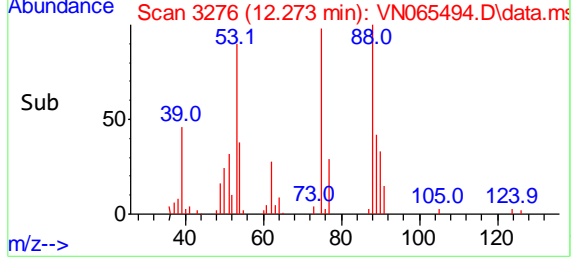
#77  
 t-1,4-Dichloro-2-butene  
 Concen: 14.61 ug/l  
 RT: 12.273 min Scan# 3276  
 Delta R.T. 0.000 min  
 Lab File: VN065494.D  
 Acq: 13 Jan 2021 18:19

**Instrument :**  
 MSVOA\_N  
**ClientSampled :**  
 VSTDICCC020

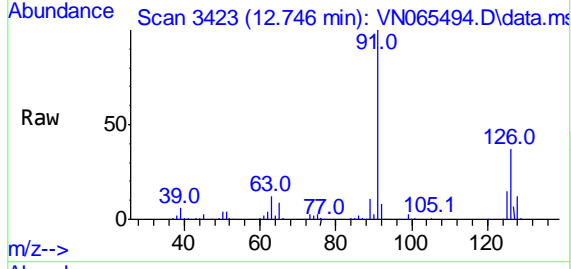


Tgt Ion: 75 Resp: 17700

Ion	Ratio	Lower	Upper
75	100		
53	89.7	44.9	134.5
89	42.7	21.3	64.0

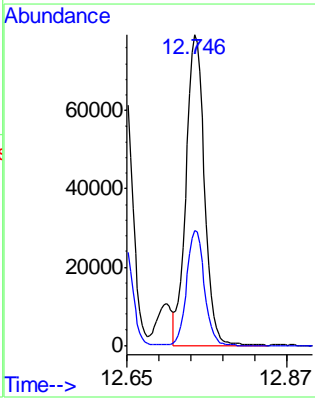
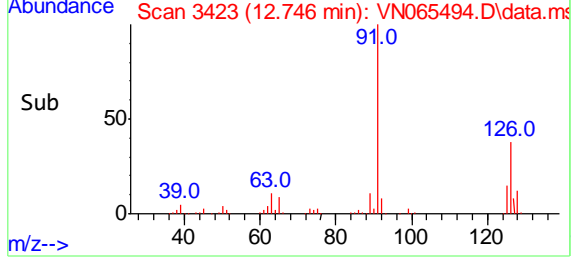


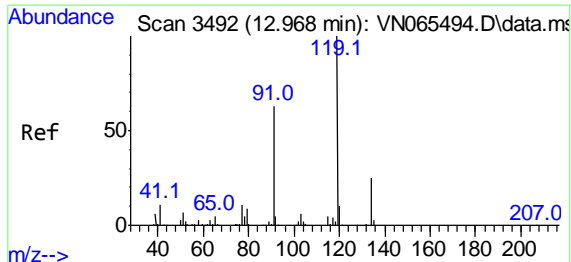
#78  
 4-Chlorotoluene  
 Concen: 17.29 ug/l  
 RT: 12.746 min Scan# 3423  
 Delta R.T. 0.000 min  
 Lab File: VN065494.D  
 Acq: 13 Jan 2021 18:19



Tgt Ion: 91 Resp: 136427

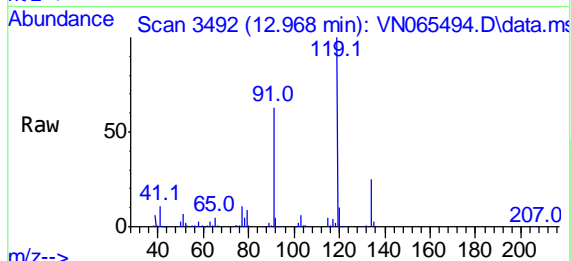
Ion	Ratio	Lower	Upper
91	100		
126	35.7	0.0	71.4



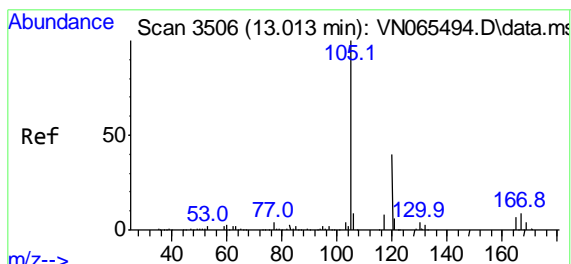
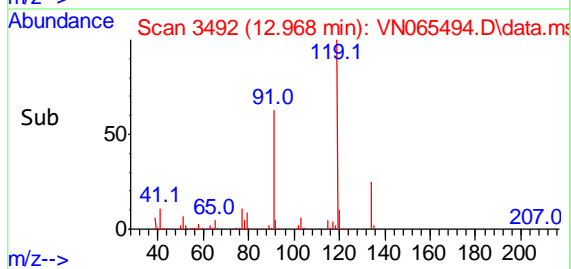
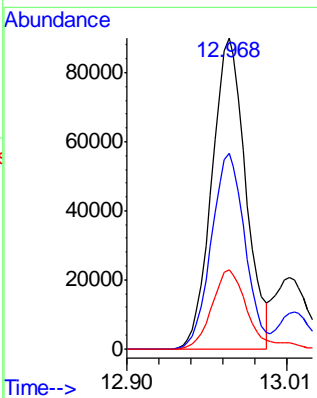


#79  
 tert-butylbenzene  
 Concen: 17.50 ug/l  
 RT: 12.968 min Scan# 3492  
 Delta R.T. 0.000 min  
 Lab File: VN065494.D  
 Acq: 13 Jan 2021 18:19

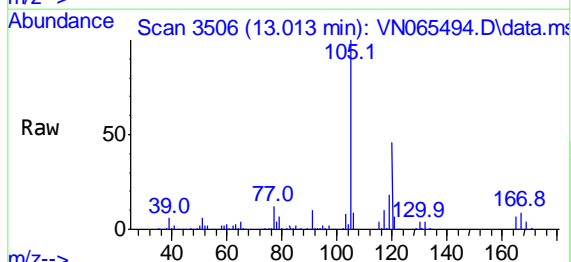
Instrument :  
 MSVOA\_N  
 ClientSampled :  
 VSTDICCC020



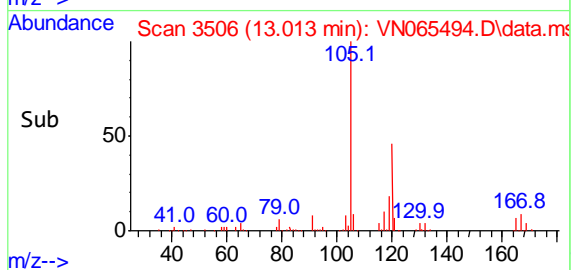
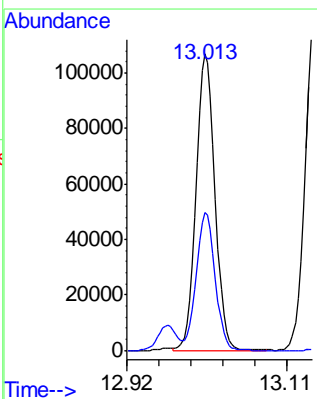
Tgt Ion:119 Resp: 146516  
 Ion Ratio Lower Upper  
 119 100  
 91 63.0 0.0 126.0  
 134 25.6 0.0 51.2

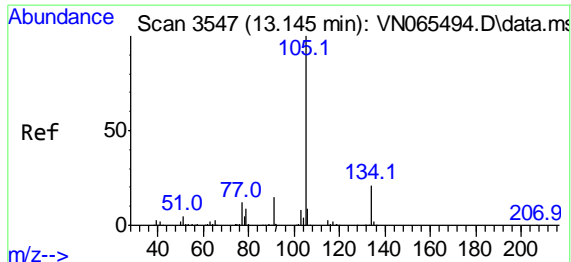


#80  
 1,2,4-Trimethylbenzene  
 Concen: 17.60 ug/l  
 RT: 13.013 min Scan# 3506  
 Delta R.T. 0.000 min  
 Lab File: VN065494.D  
 Acq: 13 Jan 2021 18:19



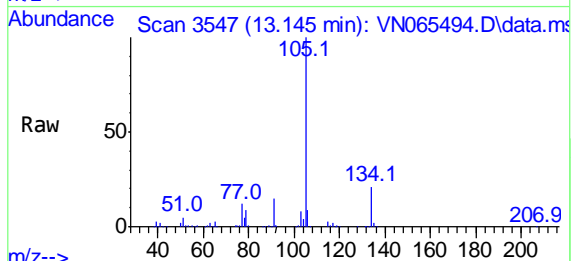
Tgt Ion:105 Resp: 171631  
 Ion Ratio Lower Upper  
 105 100  
 120 46.8 0.0 93.6



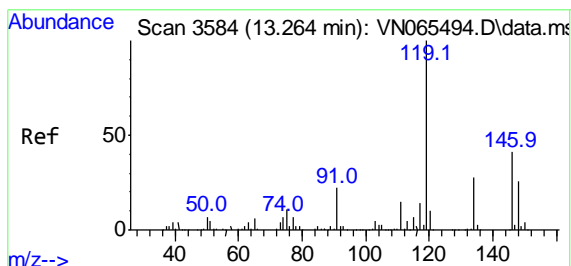
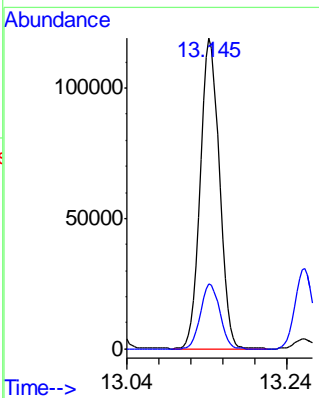
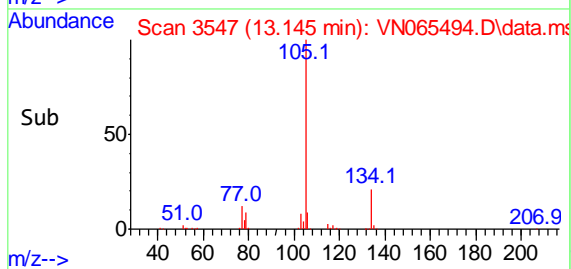


#81  
 sec-Butylbenzene  
 Concen: 17.24 ug/l  
 RT: 13.145 min Scan# 3547  
 Delta R.T. 0.000 min  
 Lab File: VN065494.D  
 Acq: 13 Jan 2021 18:19

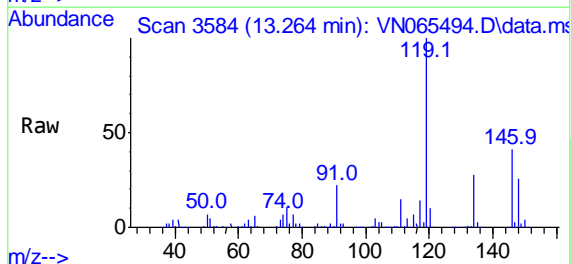
Instrument :  
 MSVOA\_N  
 ClientSampled :  
 VSTDICCC020



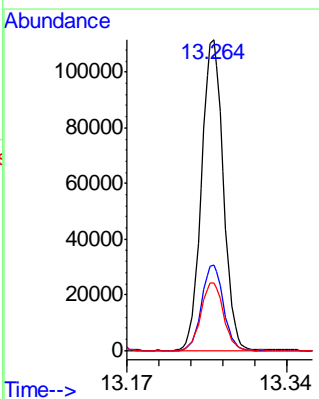
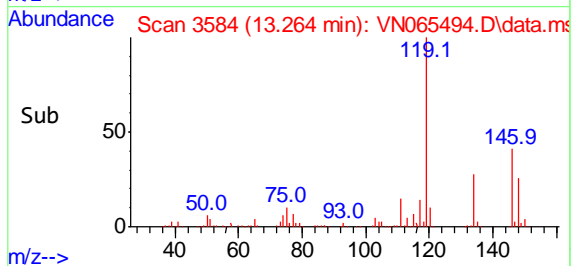
Tgt Ion:105 Resp: 189831  
 Ion Ratio Lower Upper  
 105 100  
 134 21.1 0.0 42.2

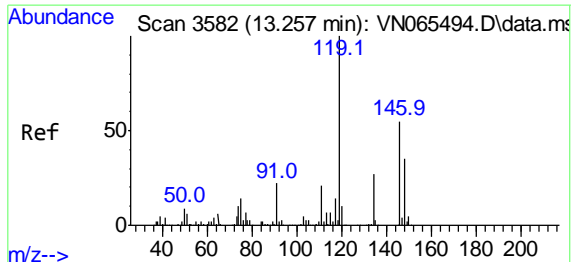


#82  
 p-Isopropyltoluene  
 Concen: 17.16 ug/l  
 RT: 13.264 min Scan# 3584  
 Delta R.T. 0.000 min  
 Lab File: VN065494.D  
 Acq: 13 Jan 2021 18:19



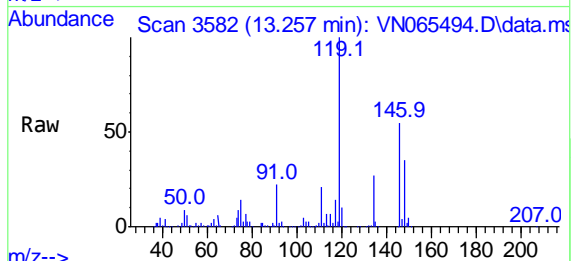
Tgt Ion:119 Resp: 174272  
 Ion Ratio Lower Upper  
 119 100  
 134 27.4 0.0 54.8  
 91 22.4 0.0 44.8





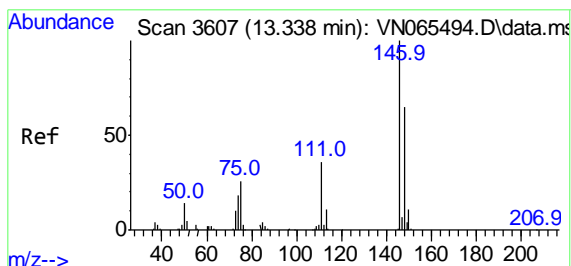
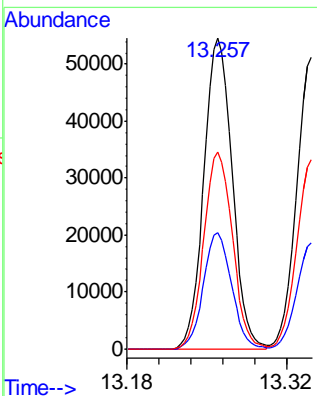
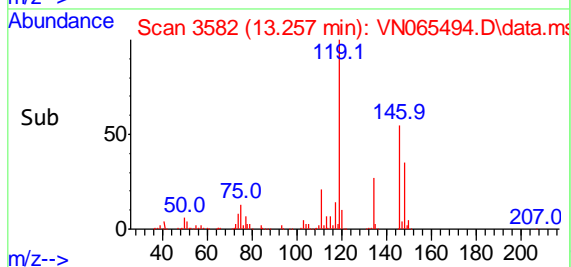
#83  
 1,3-Dichlorobenzene  
 Concen: 18.25 ug/l  
 RT: 13.257 min Scan# 3582  
 Delta R.T. 0.000 min  
 Lab File: VN065494.D  
 Acq: 13 Jan 2021 18:19

Instrument :  
 MSVOA\_N  
 ClientSampled :  
 VSTDICCC020

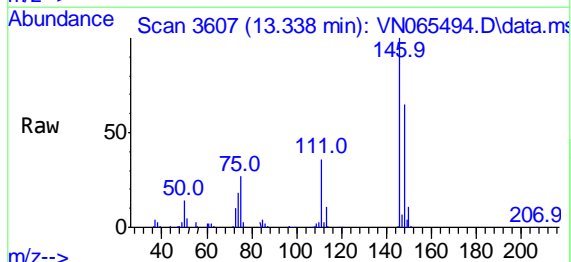


Tgt Ion:146 Resp: 92490

Ion	Ratio	Lower	Upper
146	100		
111	37.2	18.6	55.8
148	64.1	32.0	96.2

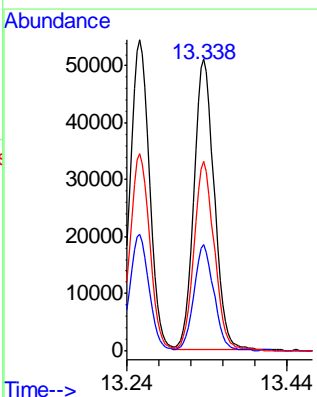
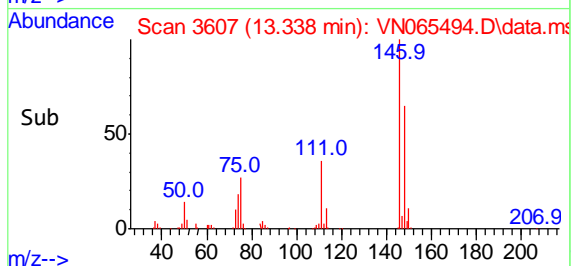


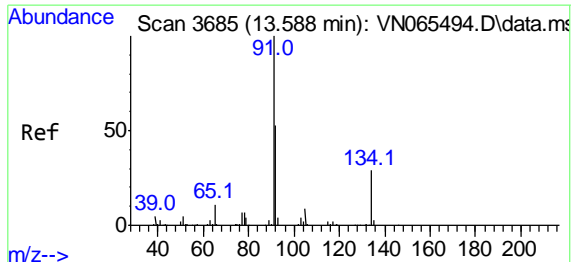
#84  
 1,4-Dichlorobenzene  
 Concen: 17.46 ug/l  
 RT: 13.338 min Scan# 3607  
 Delta R.T. 0.000 min  
 Lab File: VN065494.D  
 Acq: 13 Jan 2021 18:19



Tgt Ion:146 Resp: 87309

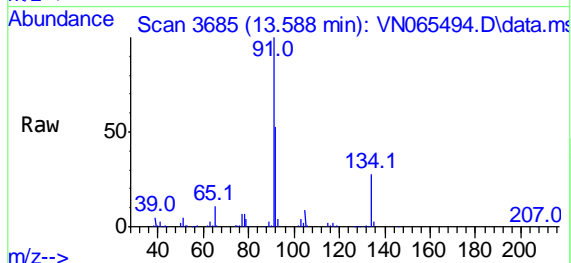
Ion	Ratio	Lower	Upper
146	100		
111	35.8	17.9	53.7
148	63.6	31.8	95.4





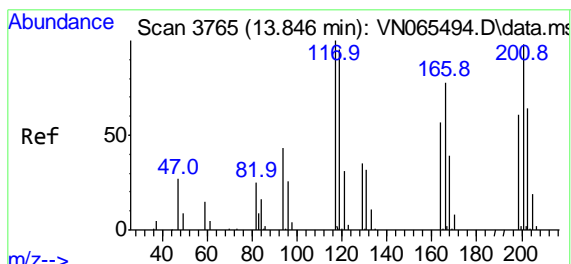
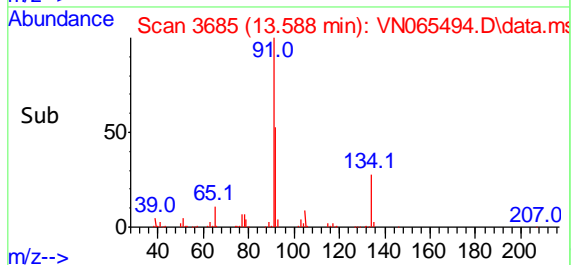
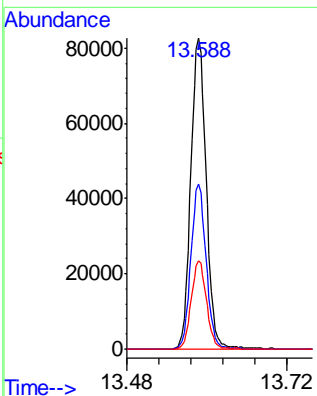
#85  
 n-Butylbenzene  
 Concen: 15.64 ug/l  
 RT: 13.588 min Scan# 3685  
 Delta R.T. 0.000 min  
 Lab File: VN065494.D  
 Acq: 13 Jan 2021 18:19

Instrument :  
 MSVOA\_N  
 ClientSampled :  
 VSTDICCC020



Tgt Ion: 91 Resp: 133432

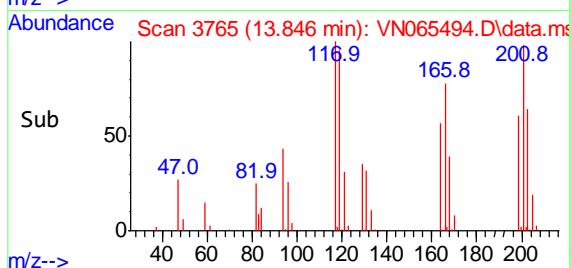
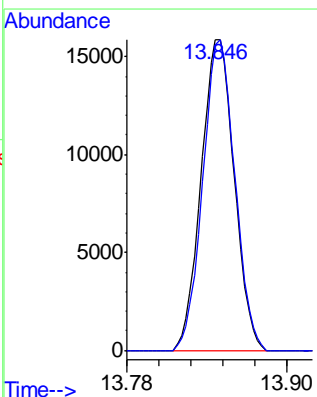
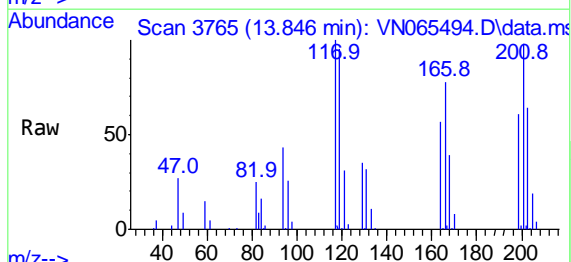
Ion	Ratio	Lower	Upper
91	100		
92	52.4	0.0	104.8
134	27.9	0.0	55.8

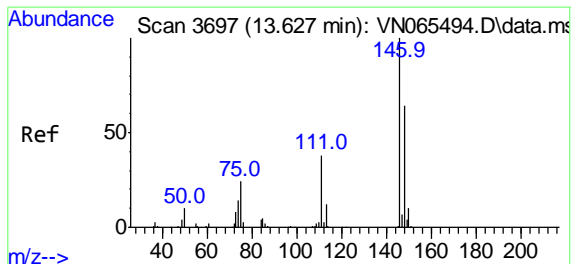


#86  
 Hexachloroethane  
 Concen: 15.32 ug/l  
 RT: 13.846 min Scan# 3765  
 Delta R.T. 0.000 min  
 Lab File: VN065494.D  
 Acq: 13 Jan 2021 18:19

Tgt Ion: 117 Resp: 27734

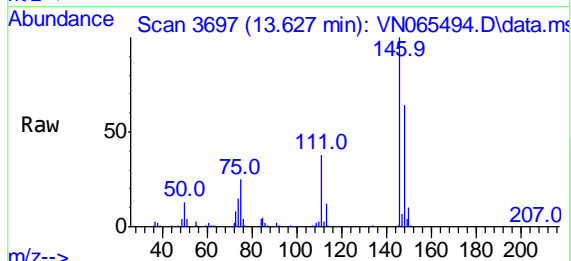
Ion	Ratio	Lower	Upper
117	100		
201	96.9	48.4	145.3





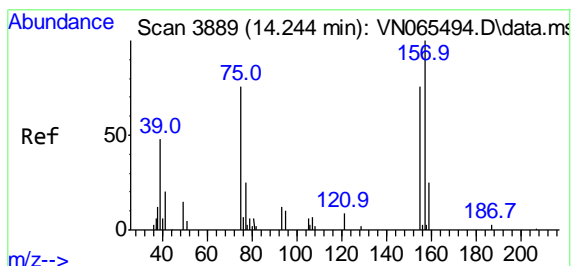
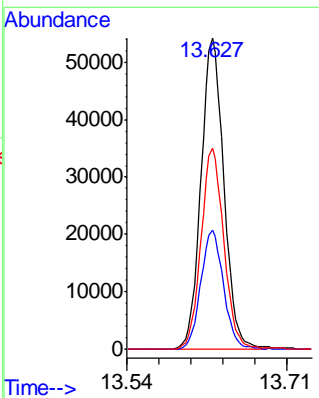
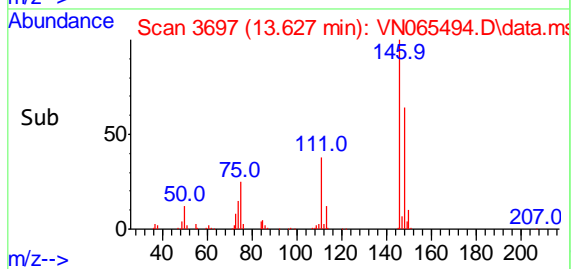
#87  
 1,2-Dichlorobenzene  
 Concen: 18.74 ug/l  
 RT: 13.627 min Scan# 3697  
 Delta R.T. 0.000 min  
 Lab File: VN065494.D  
 Acq: 13 Jan 2021 18:19

**Instrument :**  
 MSVOA\_N  
**ClientSampled :**  
 VSTDICCC020

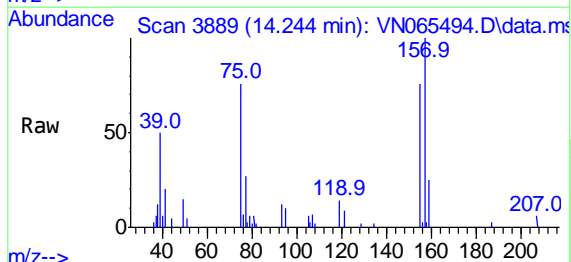


Tgt Ion:146 Resp: 92208

Ion	Ratio	Lower	Upper
146	100		
111	37.9	18.9	56.9
148	64.5	32.3	96.8

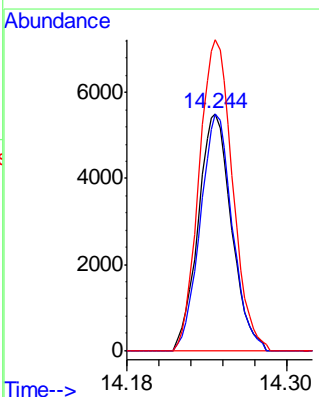
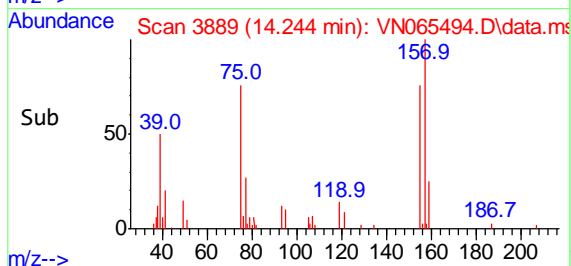


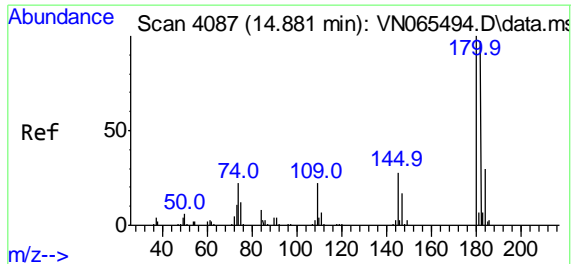
#88  
 1,2-Dibromo-3-Chloropropane  
 Concen: 15.11 ug/l  
 RT: 14.244 min Scan# 3889  
 Delta R.T. 0.000 min  
 Lab File: VN065494.D  
 Acq: 13 Jan 2021 18:19



Tgt Ion: 75 Resp: 9654

Ion	Ratio	Lower	Upper
75	100		
155	96.1	76.9	115.3
157	132.3	105.8	158.8



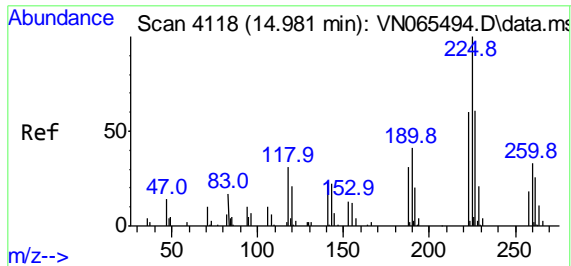
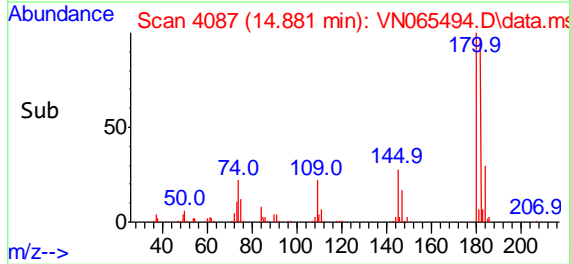
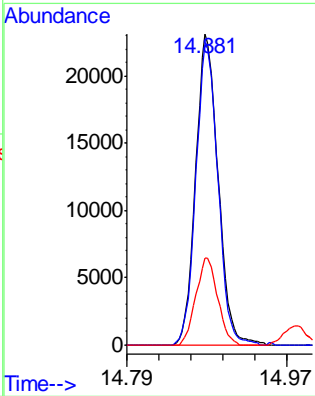
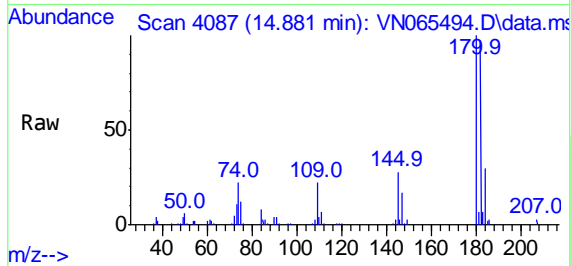


#89  
 1,2,4-Trichlorobenzene  
 Concen: 15.44 ug/l  
 RT: 14.881 min Scan# 4087  
 Delta R.T. 0.000 min  
 Lab File: VN065494.D  
 Acq: 13 Jan 2021 18:19

**Instrument :**  
 MSVOA\_N  
**ClientSampled :**  
 VSTDICCC020

Tgt Ion:180 Resp: 39705

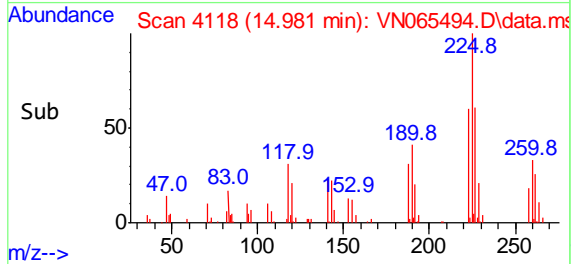
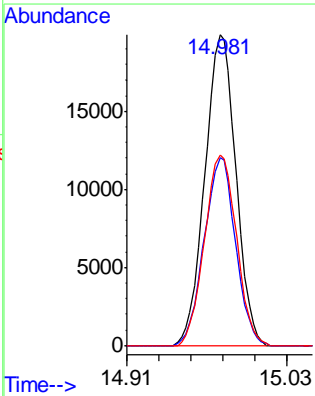
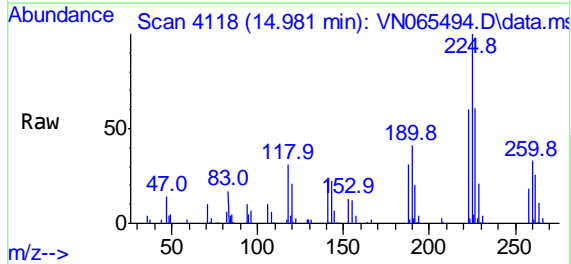
Ion	Ratio	Lower	Upper
180	100		
182	95.5	78.5	117.7
145	27.3	23.8	35.6



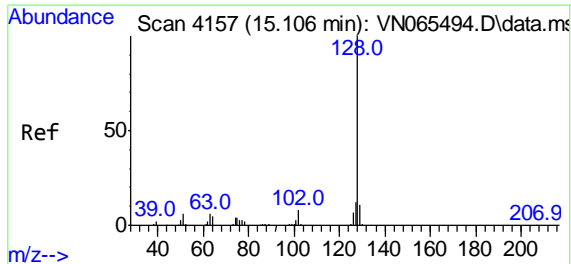
#90  
 Hexachlorobutadiene  
 Concen: 18.84 ug/l  
 RT: 14.981 min Scan# 4118  
 Delta R.T. 0.000 min  
 Lab File: VN065494.D  
 Acq: 13 Jan 2021 18:19

Tgt Ion:225 Resp: 32708

Ion	Ratio	Lower	Upper
225	100		
223	61.0	0.0	122.0
227	63.2	0.0	126.4

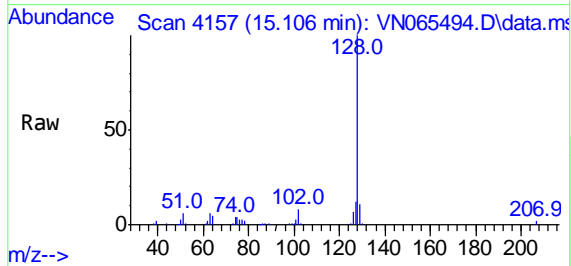






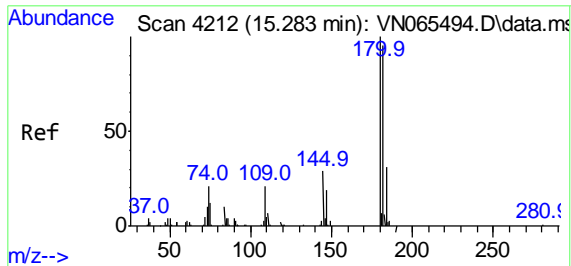
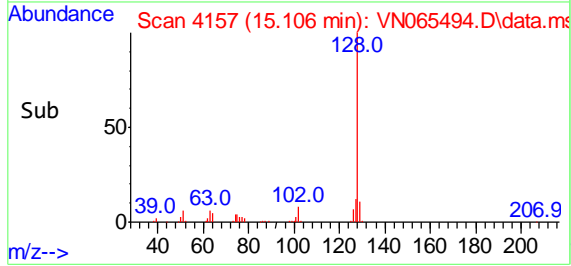
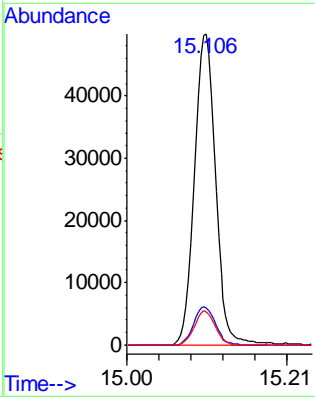
#91  
 Naphthalene  
 Concen: 13.76 ug/l  
 RT: 15.106 min Scan# 4157  
 Delta R.T. 0.000 min  
 Lab File: VN065494.D  
 Acq: 13 Jan 2021 18:19

Instrument :  
 MSVOA\_N  
 ClientSampled :  
 VSTDICCC020



Tgt Ion:128 Resp: 92945

Ion	Ratio	Lower	Upper
128	100		
127	12.6	10.1	15.1
129	10.7	8.6	12.8



#92  
 1,2,3-Trichlorobenzene  
 Concen: 16.69 ug/l  
 RT: 15.283 min Scan# 4212  
 Delta R.T. 0.000 min  
 Lab File: VN065494.D  
 Acq: 13 Jan 2021 18:19

Tgt Ion:180 Resp: 40845

Ion	Ratio	Lower	Upper
180	100		
182	95.2	0.0	190.4
145	28.9	0.0	57.8

