

Data Path : Z:\voasrv\HPCHEM1\MSVOA_N\Data\VN011322\
 Data File : VN070609.D
 Acq On : 13 Jan 2022 14:08
 Operator : JC/MD
 Sample : IBLK
 Misc : 5.00mL/MSVOA_N/WATER
 ALS Vial : 9 Sample Multiplier: 1

Instrument :
 MSVOA_N
 ClientSampleId :
 IBLK

Quant Time: Jan 14 04:53:37 2022
 Quant Method : Z:\voasrv\HPCHEM1\MSVOA_N\methods\82N122721W.M
 Quant Title : SW846 8260
 QLast Update : Mon Dec 27 18:47:12 2021
 Response via : Initial Calibration

Compound	R.T.	QIon	Response	Conc	Units	Dev(Min)

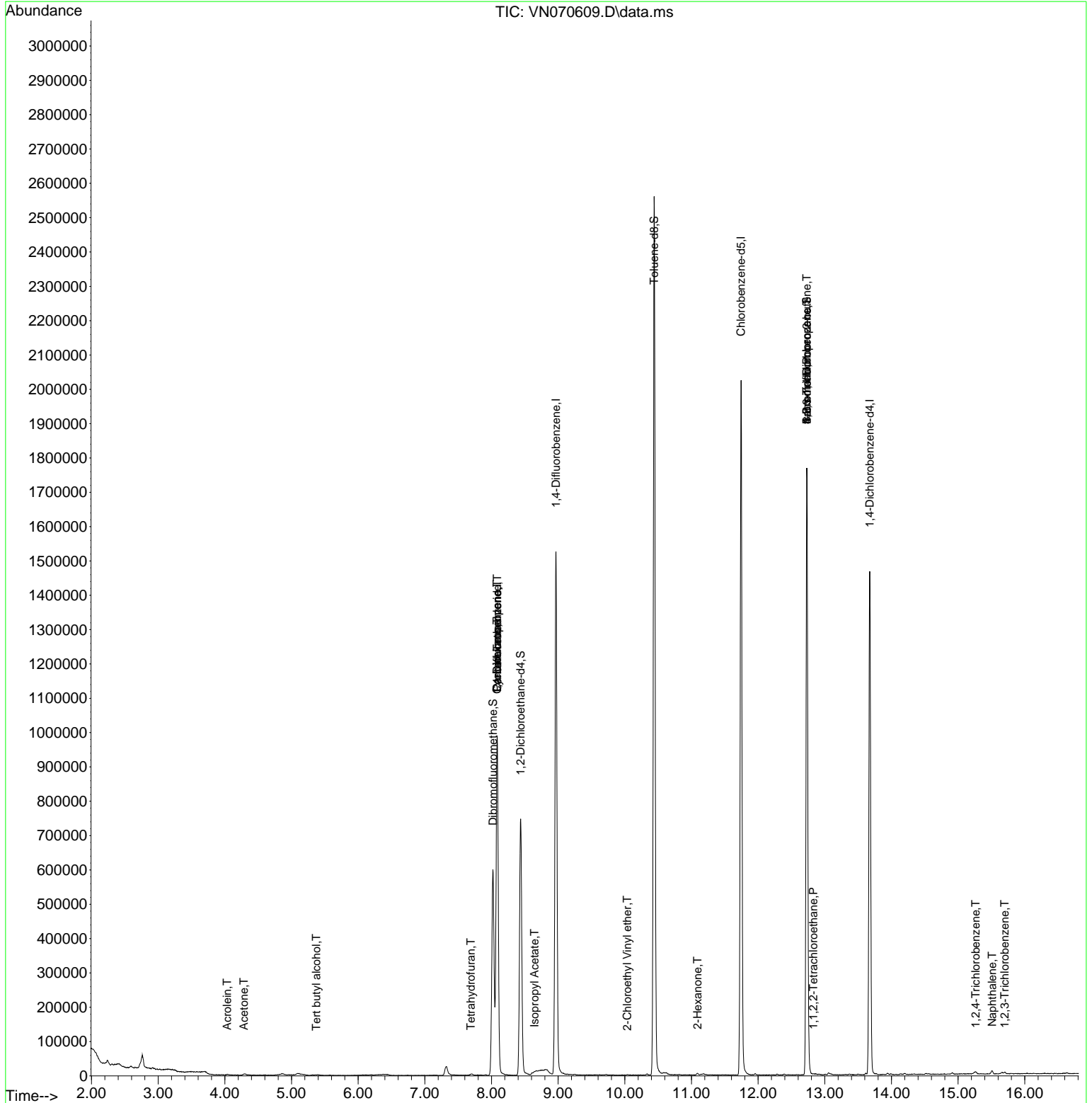
Internal Standards						
1) Pentafluorobenzene	8.086	168	765678	50.000	ug/l	0.00
34) 1,4-Difluorobenzene	8.968	114	1300632	50.000	ug/l	0.00
63) Chlorobenzene-d5	11.744	117	1169457	50.000	ug/l	0.00
72) 1,4-Dichlorobenzene-d4	13.675	152	411696	50.000	ug/l	0.00
System Monitoring Compounds						
33) 1,2-Dichloroethane-d4	8.437	65	629423	57.174	ug/l	0.00
Spiked Amount	50.000	Range 61 - 141	Recovery	=	114.340%	
35) Dibromofluoromethane	8.021	113	443730	56.386	ug/l	0.00
Spiked Amount	50.000	Range 69 - 133	Recovery	=	112.780%	
50) Toluene-d8	10.440	98	1776047	55.247	ug/l	0.00
Spiked Amount	50.000	Range 65 - 126	Recovery	=	110.500%	
62) 4-Bromofluorobenzene	12.731	95	651966	56.151	ug/l	0.00
Spiked Amount	50.000	Range 58 - 135	Recovery	=	112.300%	
Target Compounds						
						Qvalue
11) Tert butyl alcohol	5.371	59	896	0.489	ug/l #	71
13) Acrolein	4.036	56	1400	0.941	ug/l	99
16) Acetone	4.285	43	2542	0.356	ug/l	98
29) Tetrahydrofuran	7.691	42	1234	0.230	ug/l #	51
31) Cyclohexane	8.083	56	17506	1.008	ug/l #	1
36) 1,1-Dichloropropene	8.083	75	61952	4.759	ug/l #	48
38) Carbon Tetrachloride	8.086	117	74750	6.013	ug/l #	16
43) Isopropyl Acetate	8.646	43	7672	0.288	ug/l #	55
58) 2-Chloroethyl Vinyl ether	10.035	63	464	18.619	ug/l #	45
59) 2-Hexanone	11.089	43	4003	0.328	ug/l	79
71) Bromoform	12.731	173	3385	0.515	ug/l #	1
75) 1,1,2,2-Tetrachloroethane	12.830	83	150	0.458	ug/l #	72
76) 1,2,3-Trichloropropane	12.731	75	341539	29.224	ug/l #	1
81) trans-1,4-Dichloro-2-b...	12.731	75	341539	101.357	ug/l #	5
93) 1,2,4-Trichlorobenzene	15.265	180	1676	0.247	ug/l	96
95) Naphthalene	15.509	128	8950	2.257	ug/l	97
96) 1,2,3-Trichlorobenzene	15.700	180	1448	1.045	ug/l	69

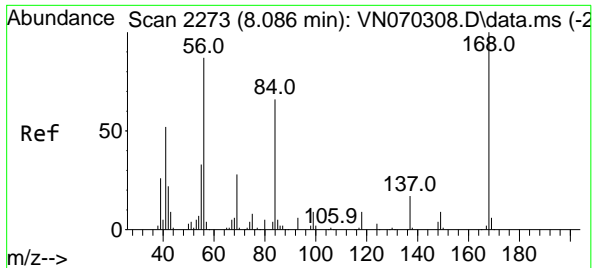
(#) = qualifier out of range (m) = manual integration (+) = signals summed

Data Path : Z:\voasrv\HPCHEM1\MSVOA_N\Data\VN011322\
 Data File : VN070609.D
 Acq On : 13 Jan 2022 14:08
 Operator : JC/MD
 Sample : IBLK
 Misc : 5.00mL/MSVOA_N/WATER
 ALS Vial : 9 Sample Multiplier: 1

Instrument :
 MSVOA_N
 ClientSampleId :
 IBLK

Quant Time: Jan 14 04:53:37 2022
 Quant Method : Z:\voasrv\HPCHEM1\MSVOA_N\methods\82N122721W.M
 Quant Title : SW846 8260
 QLast Update : Mon Dec 27 18:47:12 2021
 Response via : Initial Calibration

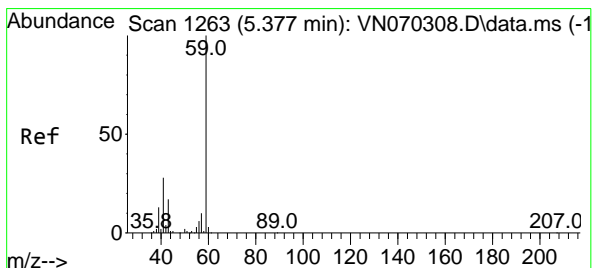
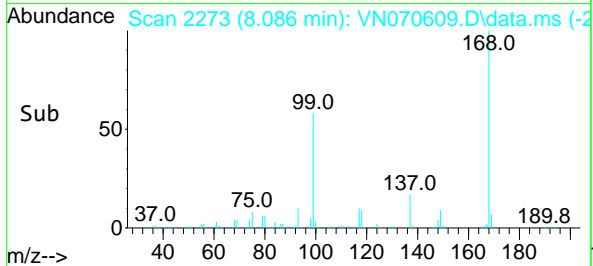
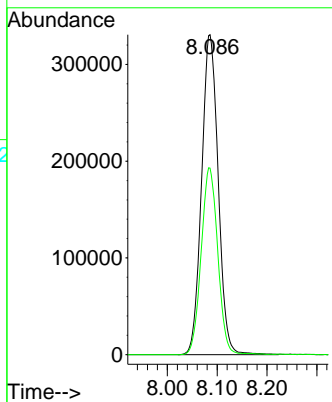
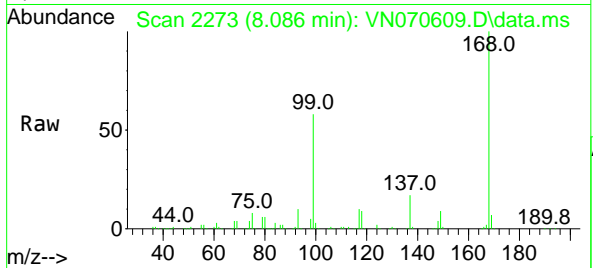




#1
 Pentafluorobenzene
 Concen: 50.000 ug/l
 RT: 8.086 min Scan# 21
 Delta R.T. -0.000 min
 Lab File: VN070609.D
 Acq: 13 Jan 2022 14:08

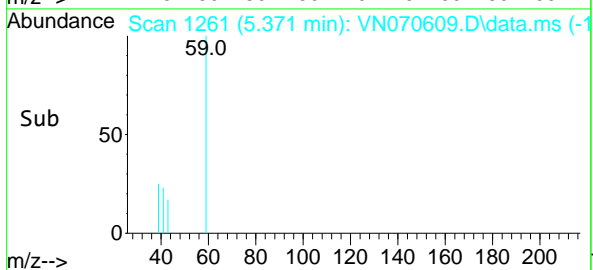
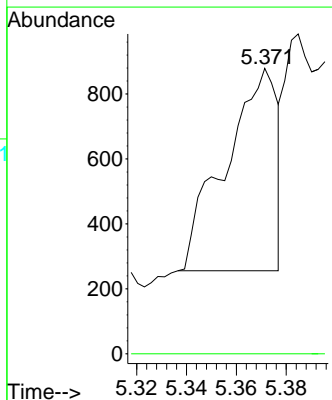
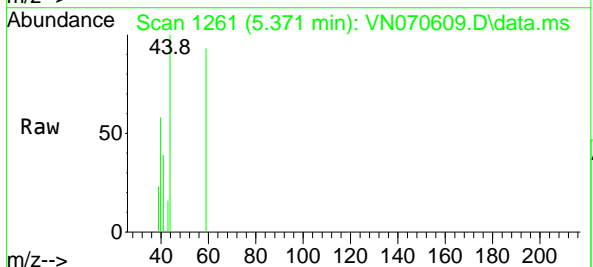
Instrument :
 MSVOA_N
 ClientSampleId :
 IBLK

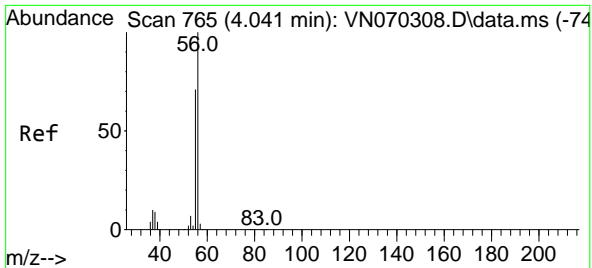
Tgt Ion:168 Resp: 765678
 Ion Ratio Lower Upper
 168 100
 99 58.3 41.3 61.9



#11
 Tert butyl alcohol
 Concen: 0.489 ug/l
 RT: 5.371 min Scan# 1261
 Delta R.T. -0.006 min
 Lab File: VN070609.D
 Acq: 13 Jan 2022 14:08

Tgt Ion: 59 Resp: 896
 Ion Ratio Lower Upper
 59 100
 57 0.0 8.7 13.1#

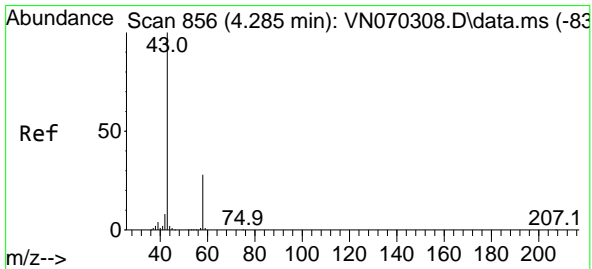
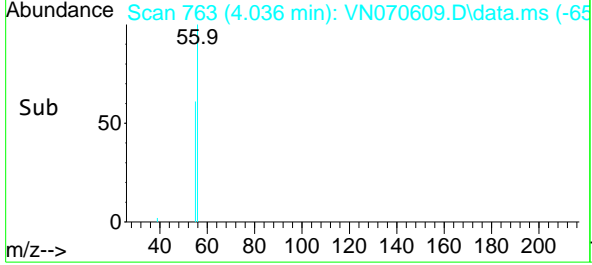
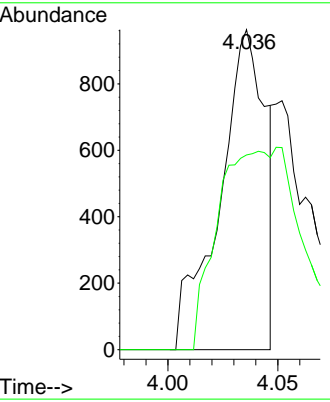
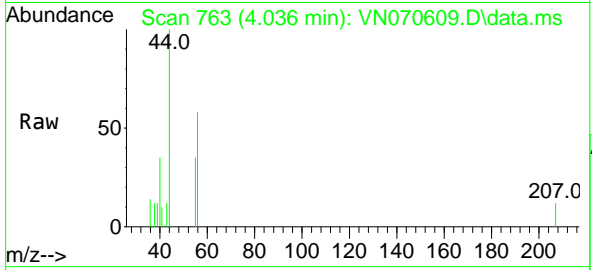




#13
 Acrolein
 Concen: 0.941 ug/l
 RT: 4.036 min Scan# 763
 Delta R.T. -0.005 min
 Lab File: VN070609.D
 Acq: 13 Jan 2022 14:08

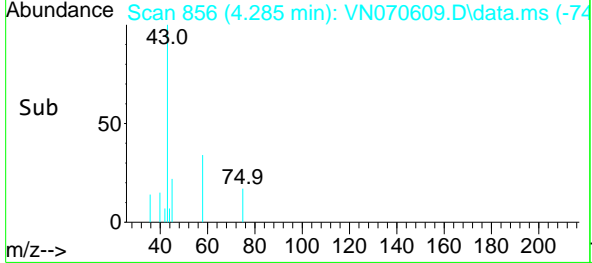
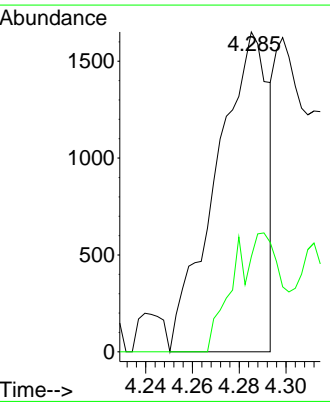
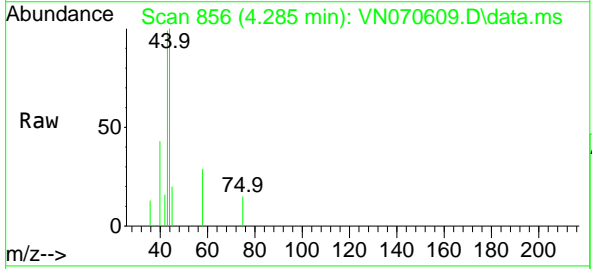
Instrument : MSVOA_N
 ClientSampleId : IBLK

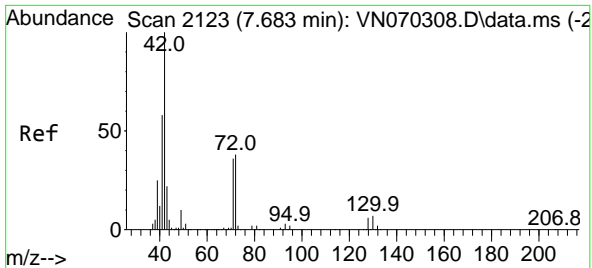
Tgt Ion: 56 Resp: 1400
 Ion Ratio Lower Upper
 56 100
 55 71.6 56.6 85.0



#16
 Acetone
 Concen: 0.356 ug/l
 RT: 4.285 min Scan# 856
 Delta R.T. 0.000 min
 Lab File: VN070609.D
 Acq: 13 Jan 2022 14:08

Tgt Ion: 43 Resp: 2542
 Ion Ratio Lower Upper
 43 100
 58 29.7 23.1 34.7



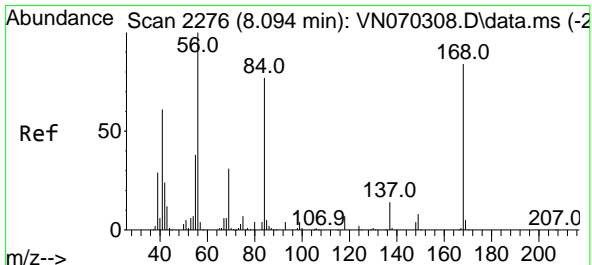
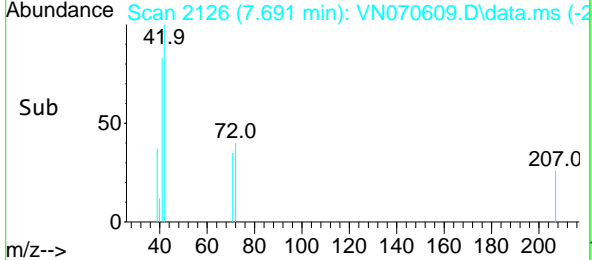
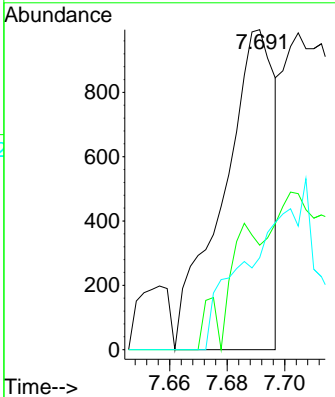
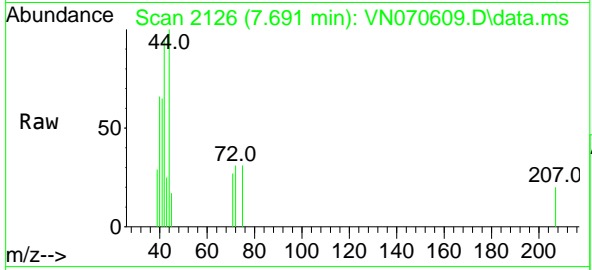


#29
 Tetrahydrofuran
 Concen: 0.230 ug/l
 RT: 7.691 min Scan# 2126
 Delta R.T. 0.008 min
 Lab File: VN070609.D
 Acq: 13 Jan 2022 14:08

Instrument : MSVOA_N
 Client Sample Id : BLK

Tgt Ion: 42 Resp: 1234

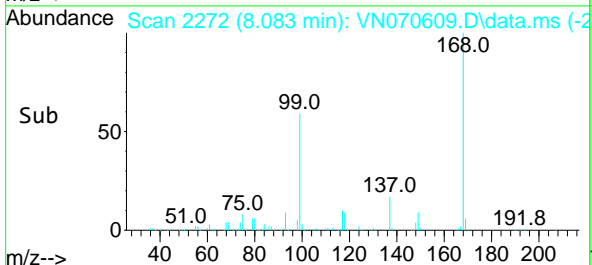
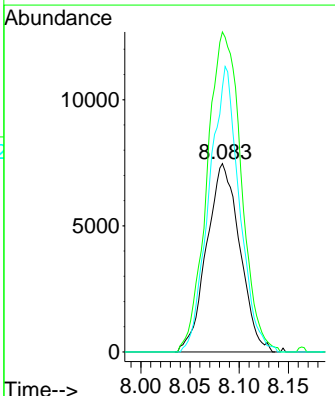
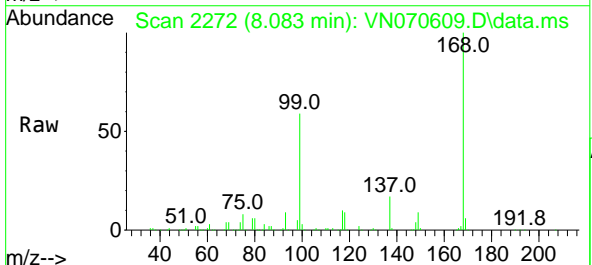
Ion	Ratio	Lower	Upper
42	100		
72	25.3	36.3	54.5#
71	0.0	34.7	52.1#

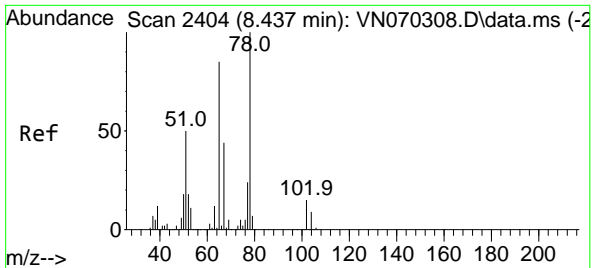


#31
 Cyclohexane
 Concen: 1.008 ug/l
 RT: 8.083 min Scan# 2272
 Delta R.T. -0.011 min
 Lab File: VN070609.D
 Acq: 13 Jan 2022 14:08

Tgt Ion: 56 Resp: 17506

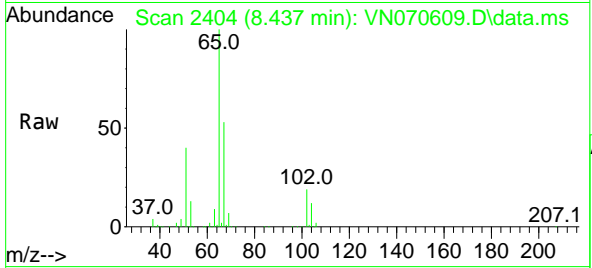
Ion	Ratio	Lower	Upper
56	100		
69	170.0	27.1	40.7#
84	140.4	73.4	110.0#



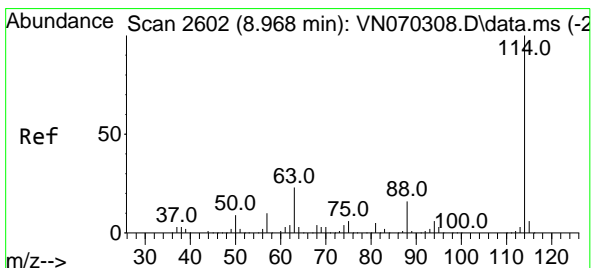
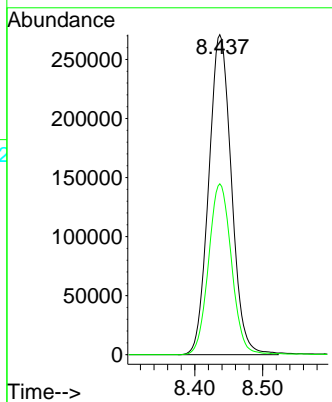
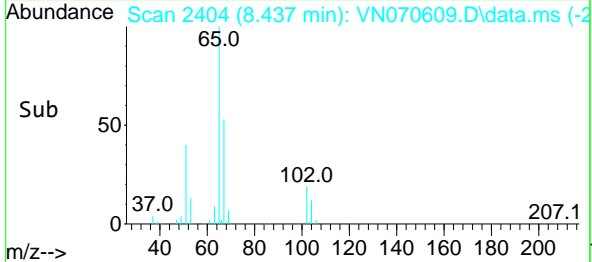


#33
 1,2-Dichloroethane-d4
 Concen: 57.174 ug/l
 RT: 8.437 min Scan# 24
 Delta R.T. -0.000 min
 Lab File: VN070609.D
 Acq: 13 Jan 2022 14:08

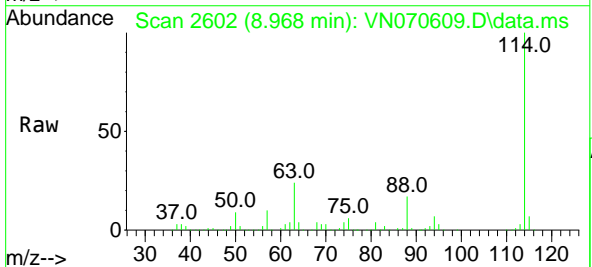
Instrument :
 MSVOA_N
 ClientSampleId :
 IBLK



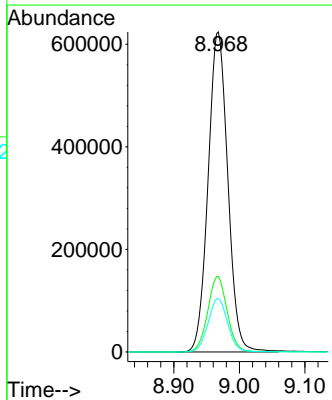
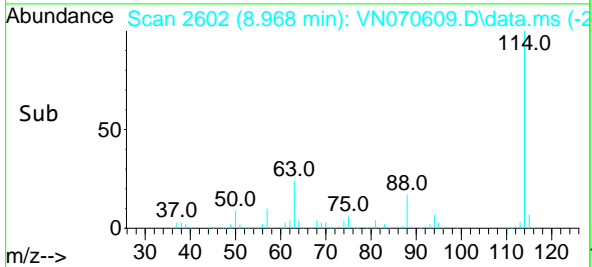
Tgt Ion: 65 Resp: 629423
 Ion Ratio Lower Upper
 65 100
 67 53.7 0.0 103.0

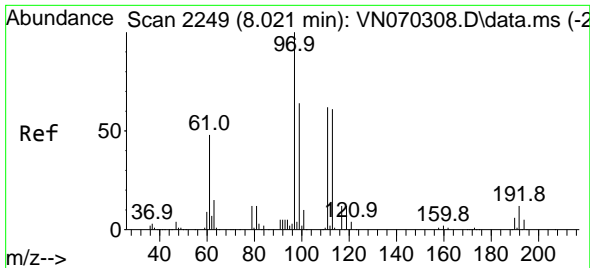


#34
 1,4-Difluorobenzene
 Concen: 50.000 ug/l
 RT: 8.968 min Scan# 2602
 Delta R.T. -0.000 min
 Lab File: VN070609.D
 Acq: 13 Jan 2022 14:08



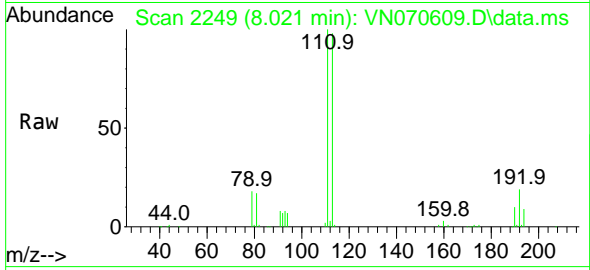
Tgt Ion: 114 Resp: 1300632
 Ion Ratio Lower Upper
 114 100
 63 23.6 0.0 37.8
 88 16.6 0.0 27.4



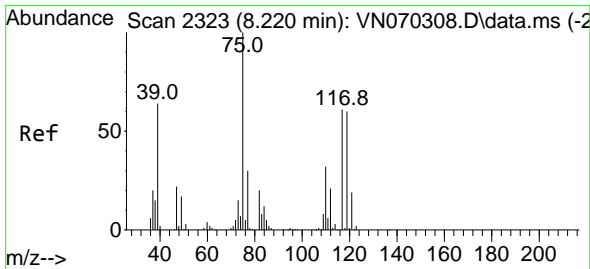
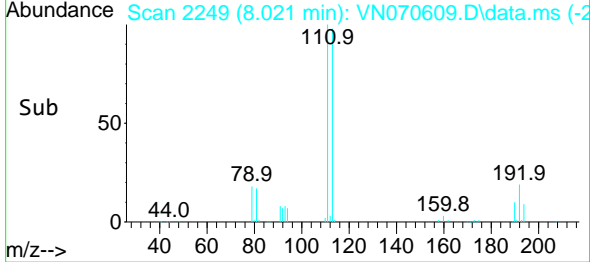
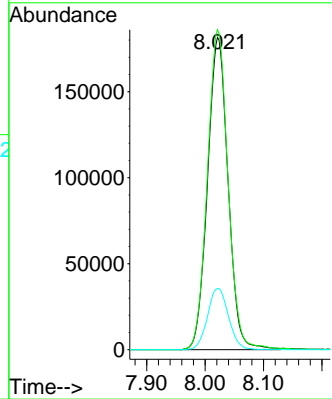


#35
 Dibromofluoromethane
 Concen: 56.386 ug/l
 RT: 8.021 min Scan# 211
 Delta R.T. 0.000 min
 Lab File: VN070609.D
 Acq: 13 Jan 2022 14:08

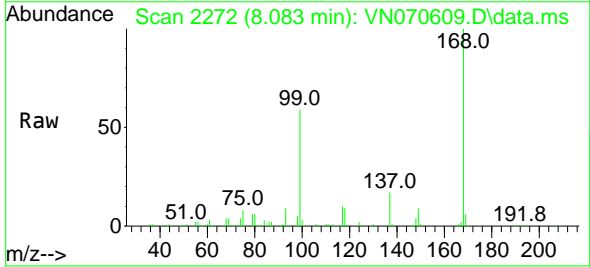
Instrument : MSVOA_N
 ClientSampleId : IBLK



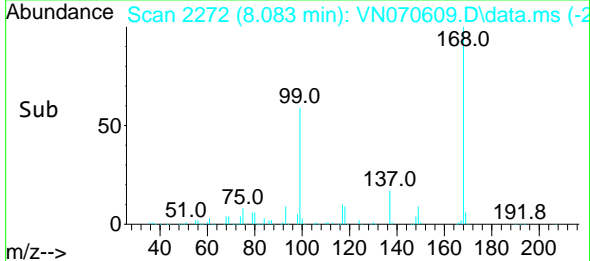
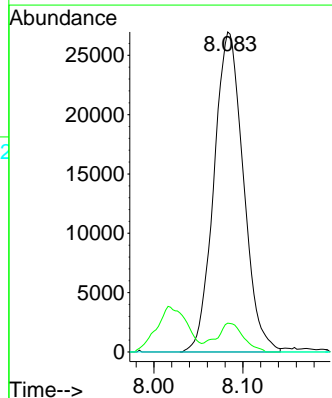
Tgt Ion:113 Resp: 443730
 Ion Ratio Lower Upper
 113 100
 111 103.4 82.2 123.2
 192 20.0 16.9 25.3

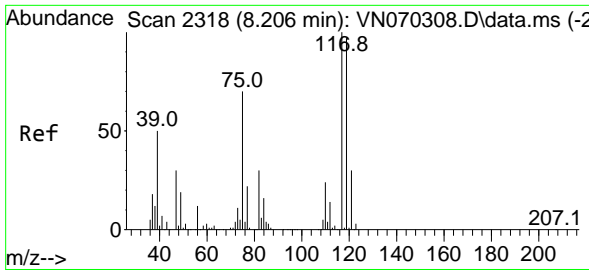


#36
 1,1-Dichloropropene
 Concen: 4.759 ug/l
 RT: 8.083 min Scan# 2272
 Delta R.T. -0.137 min
 Lab File: VN070609.D
 Acq: 13 Jan 2022 14:08



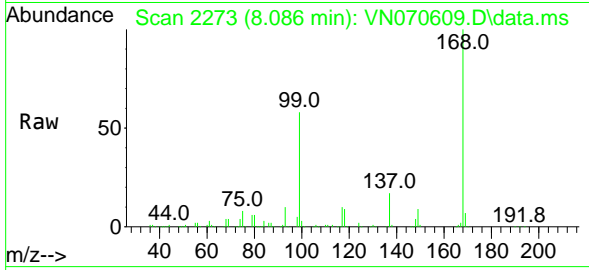
Tgt Ion: 75 Resp: 61952
 Ion Ratio Lower Upper
 75 100
 110 8.2 18.4 55.2#
 77 0.0 24.4 36.6#



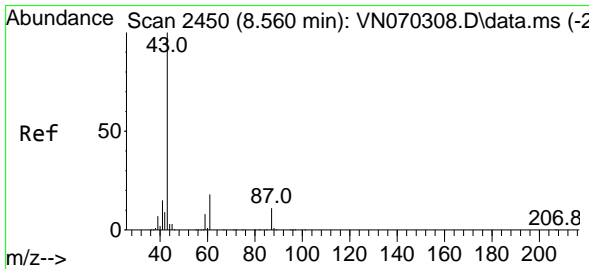
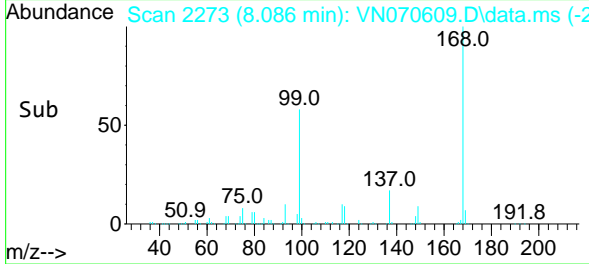
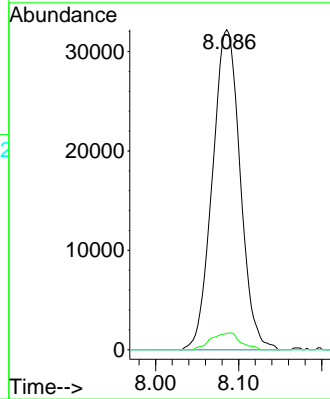


#38
 Carbon Tetrachloride
 Concen: 6.013 ug/l
 RT: 8.086 min Scan# 211
 Delta R.T. -0.120 min
 Lab File: VN070609.D
 Acq: 13 Jan 2022 14:08

Instrument : MSVOA_N
 ClientSampleId : IBLK

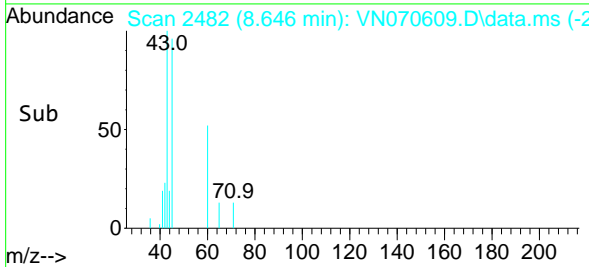
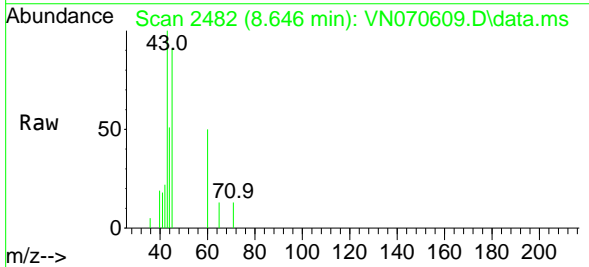
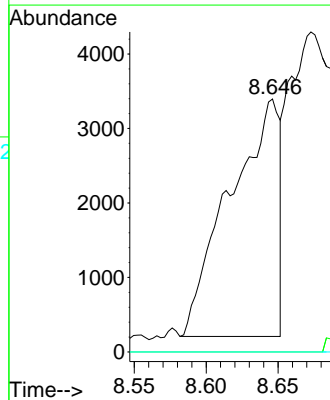


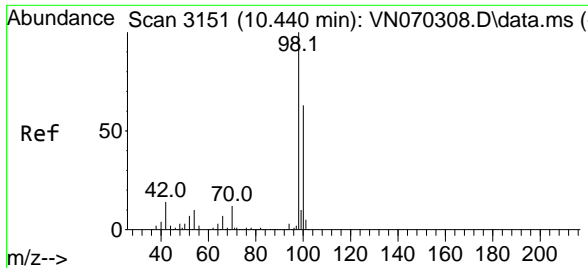
Tgt Ion:117 Resp: 74750
 Ion Ratio Lower Upper
 117 100
 119 5.1 76.1 114.1#
 121 0.0 24.2 36.2#



#43
 Isopropyl Acetate
 Concen: 0.288 ug/l
 RT: 8.646 min Scan# 2482
 Delta R.T. 0.086 min
 Lab File: VN070609.D
 Acq: 13 Jan 2022 14:08

Tgt Ion: 43 Resp: 7672
 Ion Ratio Lower Upper
 43 100
 61 0.0 20.4 30.6#
 87 0.0 11.2 16.8#

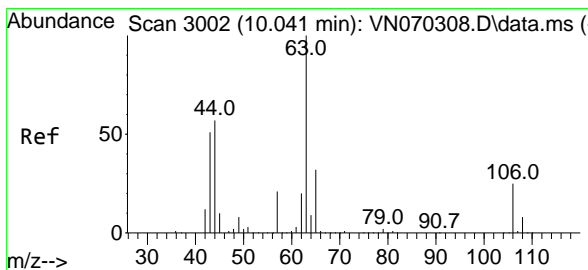
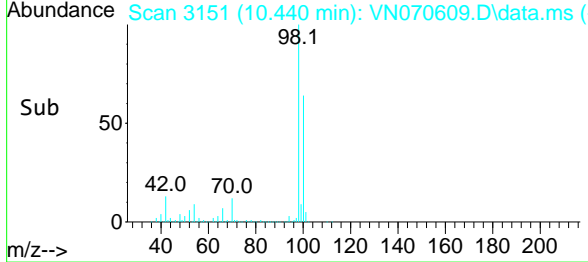
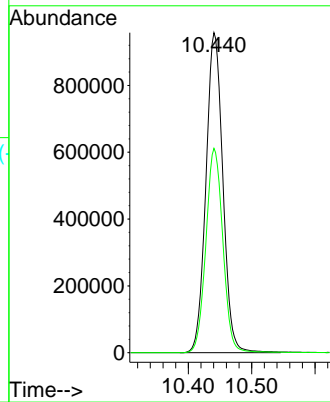
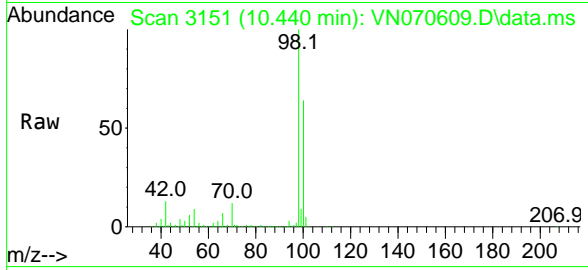




#50
 Toluene-d8
 Concen: 55.247 ug/l
 RT: 10.440 min Scan# 3151
 Delta R.T. 0.000 min
 Lab File: VN070609.D
 Acq: 13 Jan 2022 14:08

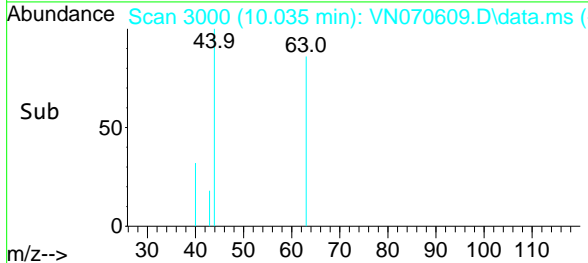
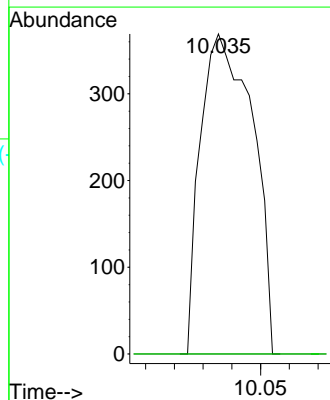
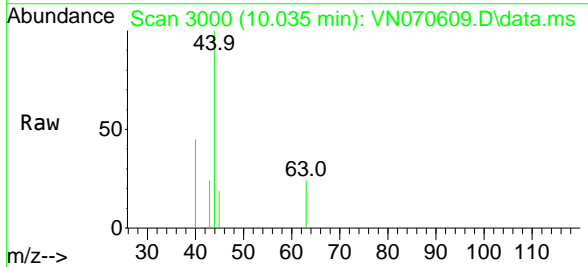
Instrument :
 MSVOA_N
 ClientSampleId :
 IBLK

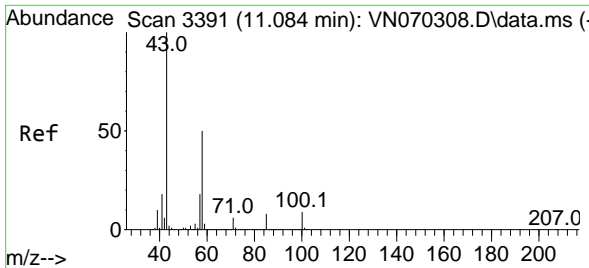
Tgt Ion: 98 Resp: 1776047
 Ion Ratio Lower Upper
 98 100
 100 63.9 50.4 75.6



#58
 2-Chloroethyl Vinyl ether
 Concen: 18.619 ug/l
 RT: 10.035 min Scan# 3000
 Delta R.T. -0.006 min
 Lab File: VN070609.D
 Acq: 13 Jan 2022 14:08

Tgt Ion: 63 Resp: 464
 Ion Ratio Lower Upper
 63 100
 106 0.0 23.9 35.9#

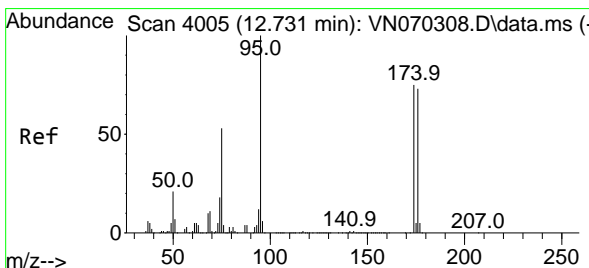
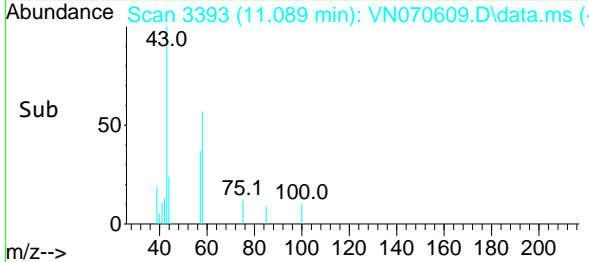
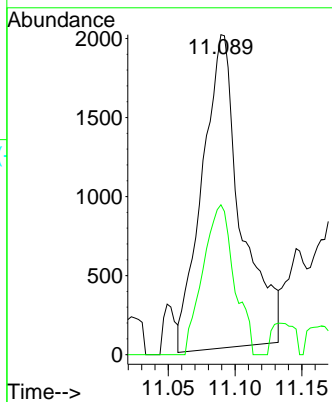
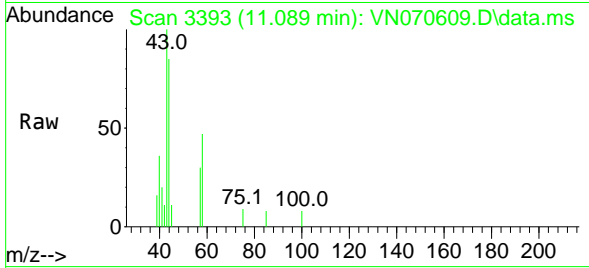




#59
 2-Hexanone
 Concen: 0.328 ug/l
 RT: 11.089 min Scan# 3391
 Delta R.T. 0.005 min
 Lab File: VN070609.D
 Acq: 13 Jan 2022 14:08

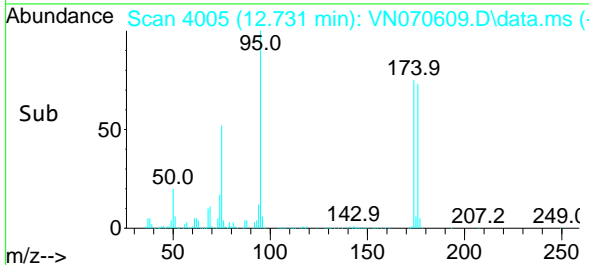
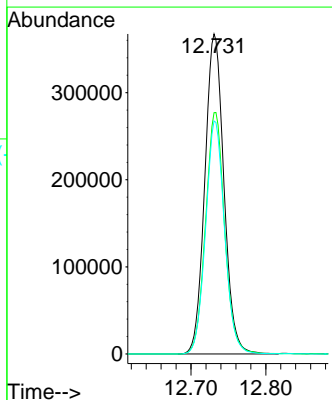
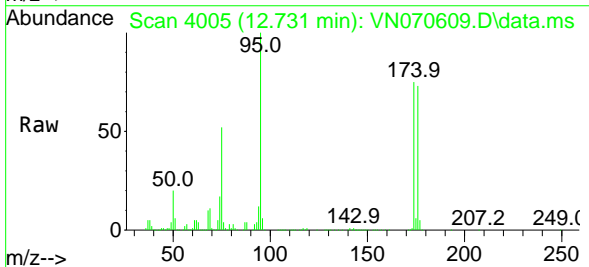
Instrument : MSVOA_N
 ClientSampleId : IBLK

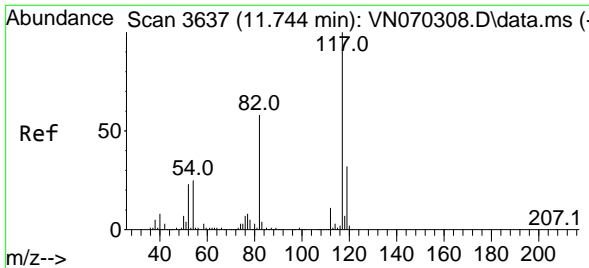
Tgt Ion: 43 Resp: 4003
 Ion Ratio Lower Upper
 43 100
 58 38.6 26.9 80.7



#62
 4-Bromofluorobenzene
 Concen: 56.151 ug/l
 RT: 12.731 min Scan# 4005
 Delta R.T. -0.000 min
 Lab File: VN070609.D
 Acq: 13 Jan 2022 14:08

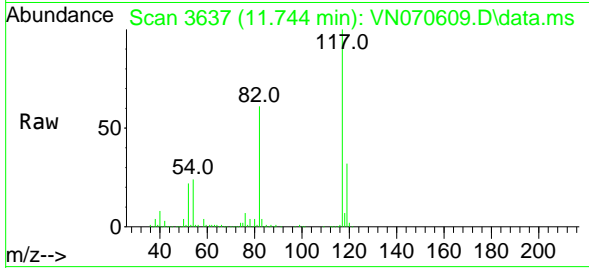
Tgt Ion: 95 Resp: 651966
 Ion Ratio Lower Upper
 95 100
 174 75.5 0.0 187.2
 176 72.3 0.0 181.4





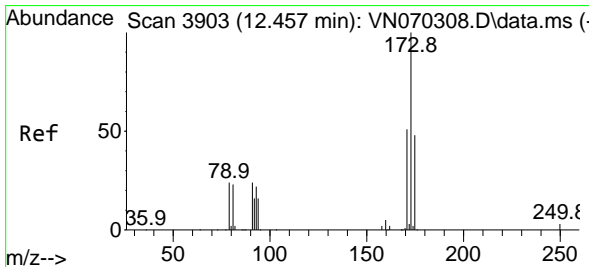
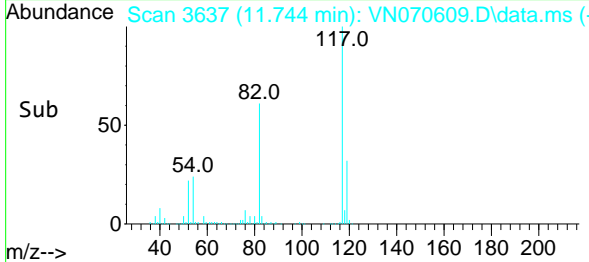
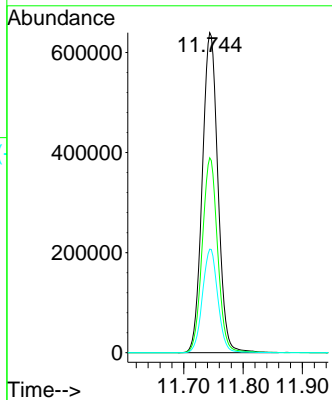
#63
 Chlorobenzene-d5
 Concen: 50.000 ug/l
 RT: 11.744 min Scan# 30
 Delta R.T. -0.000 min
 Lab File: VN070609.D
 Acq: 13 Jan 2022 14:08

Instrument :
 MSVOA_N
 ClientSampleId :
 IBLK



Tgt Ion:117 Resp: 1169457

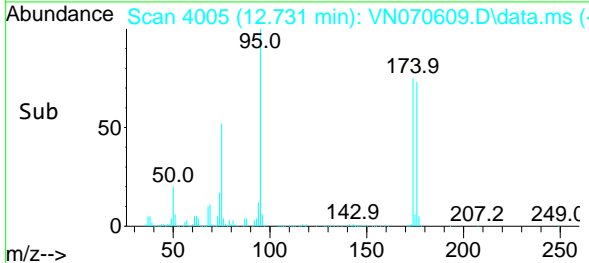
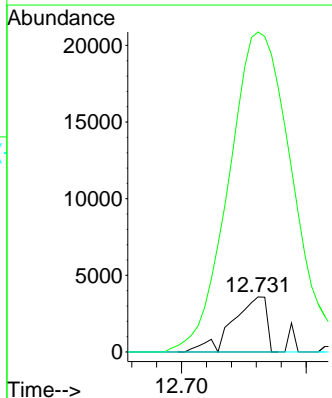
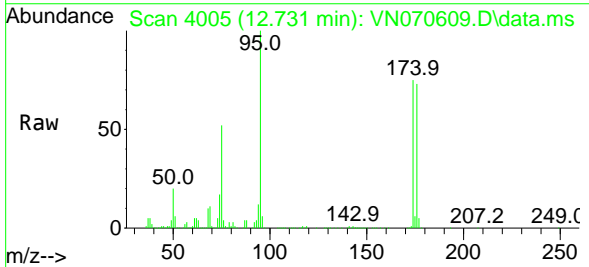
Ion	Ratio	Lower	Upper
117	100		
82	60.9	42.4	63.6
119	32.4	25.4	38.2

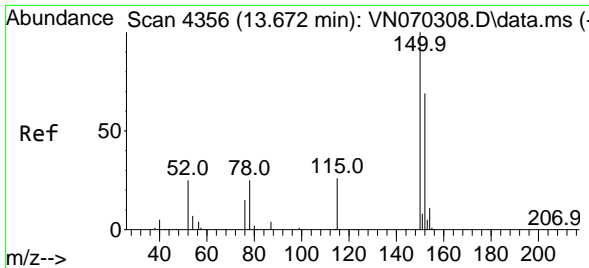


#71
 Bromoform
 Concen: 0.515 ug/l
 RT: 12.731 min Scan# 4005
 Delta R.T. 0.274 min
 Lab File: VN070609.D
 Acq: 13 Jan 2022 14:08

Tgt Ion:173 Resp: 3385

Ion	Ratio	Lower	Upper
173	100		
175	995.5	24.2	72.6#
254	0.0	0.0	0.0

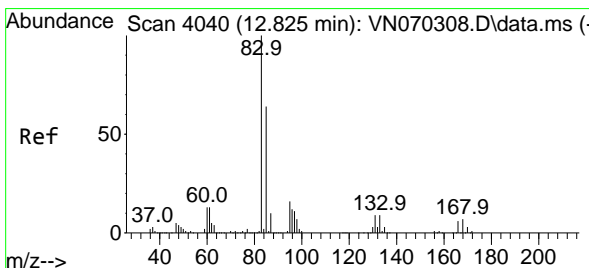
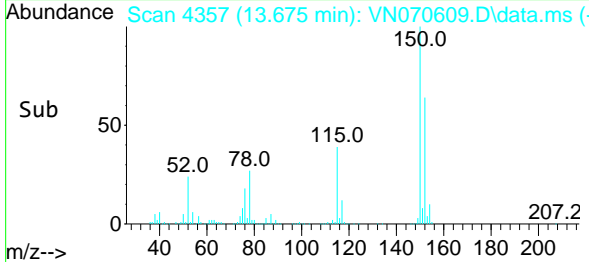
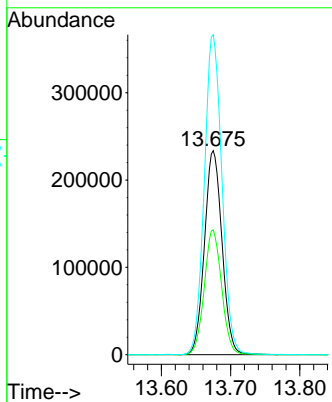
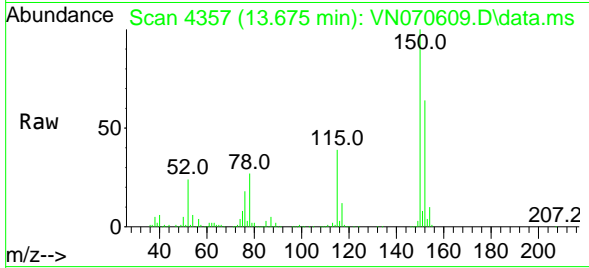




#72
 1,4-Dichlorobenzene-d4
 Concen: 50.000 ug/l
 RT: 13.675 min Scan# 41
 Delta R.T. 0.003 min
 Lab File: VN070609.D
 Acq: 13 Jan 2022 14:08

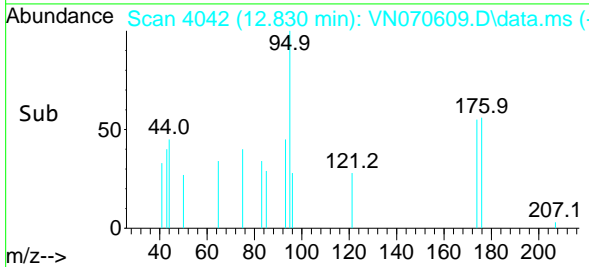
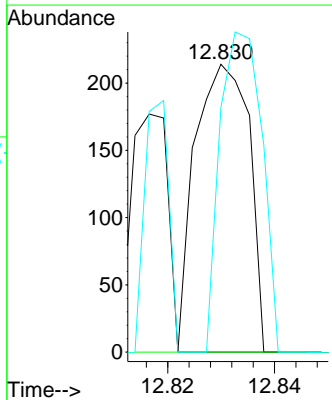
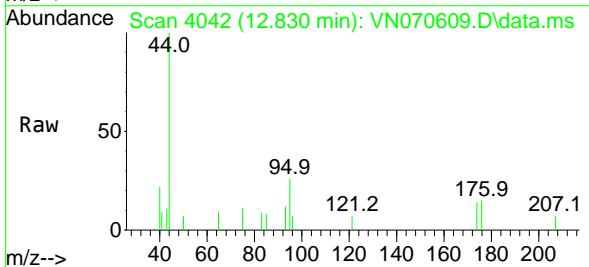
Instrument :
 MSVOA_N
 ClientSampleId :
 IBLK

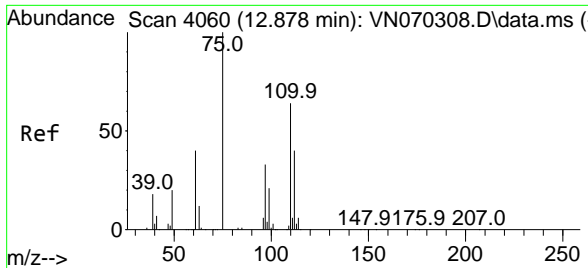
Tgt Ion	Resp	Lower	Upper
152	411696		
100			
115	60.5	27.5	82.5
150	157.1	0.0	344.4



#75
 1,1,2,2-Tetrachloroethane
 Concen: 0.458 ug/l
 RT: 12.830 min Scan# 4042
 Delta R.T. 0.005 min
 Lab File: VN070609.D
 Acq: 13 Jan 2022 14:08

Tgt Ion	Resp	Lower	Upper
83	150		
100			
131	0.0	5.5	16.5#
85	86.7	32.4	97.2

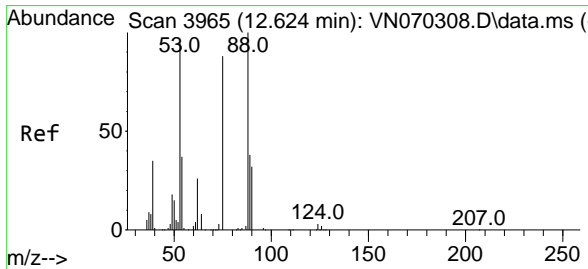
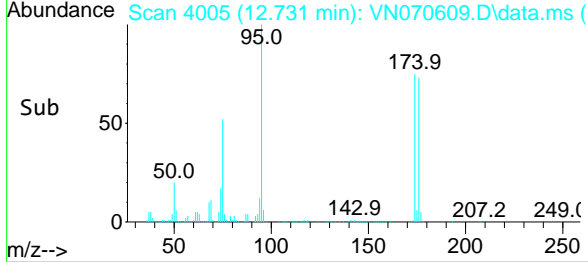
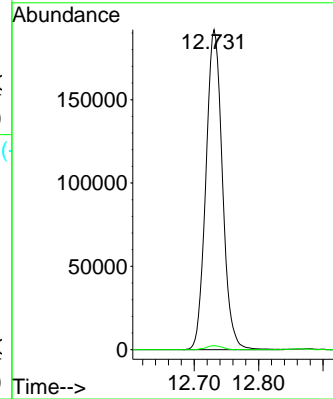
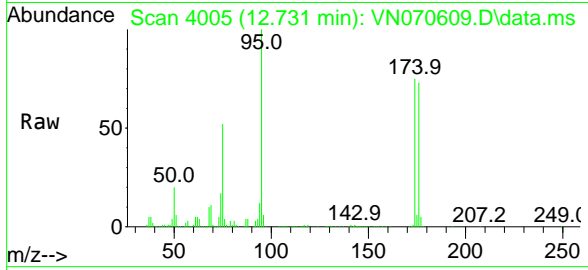




#76
 1,2,3-Trichloropropane
 Concen: 29.224 ug/l
 RT: 12.731 min Scan# 4005
 Delta R.T. -0.147 min
 Lab File: VN070609.D
 Acq: 13 Jan 2022 14:08

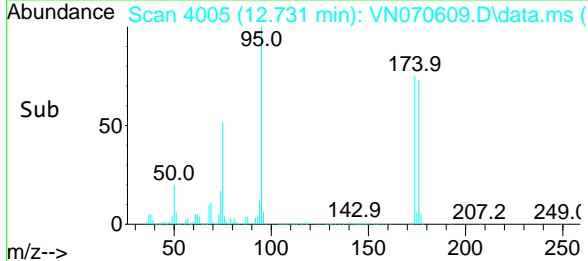
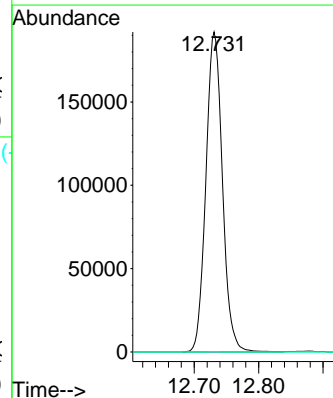
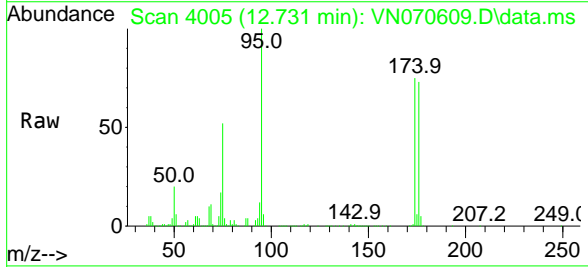
Instrument : MSVOA_N
 ClientSampleId : IBLK

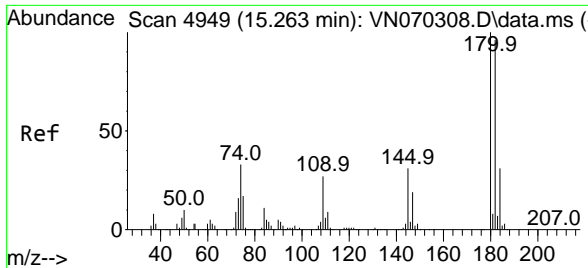
Tgt Ion: 75 Resp: 341539
 Ion Ratio Lower Upper
 75 100
 77 1.2 82.6 247.8#



#81
 trans-1,4-Dichloro-2-butene
 Concen: 101.357 ug/l
 RT: 12.731 min Scan# 4005
 Delta R.T. 0.107 min
 Lab File: VN070609.D
 Acq: 13 Jan 2022 14:08

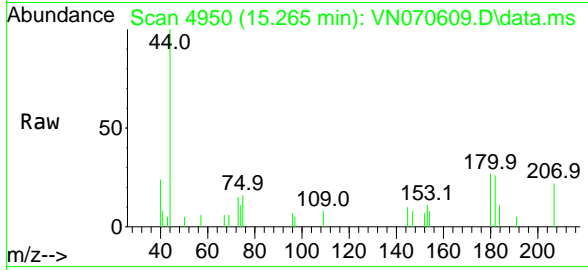
Tgt Ion: 75 Resp: 341539
 Ion Ratio Lower Upper
 75 100
 53 0.1 90.5 135.7#
 89 0.0 38.2 57.4#





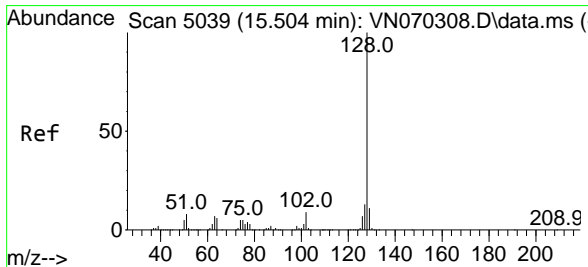
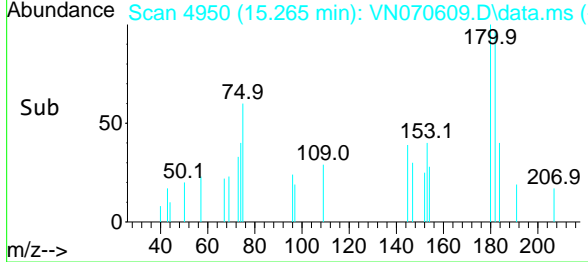
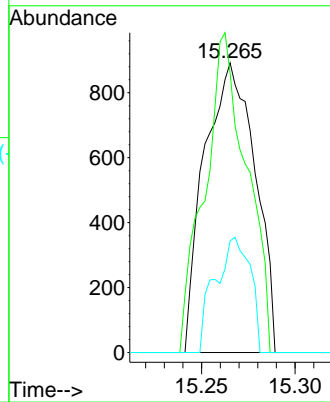
#93
 1,2,4-Trichlorobenzene
 Concen: 0.247 ug/l
 RT: 15.265 min Scan# 4949
 Delta R.T. 0.002 min
 Lab File: VN070609.D
 Acq: 13 Jan 2022 14:08

Instrument :
 MSVOA_N
 ClientSampleId :
 IBLK

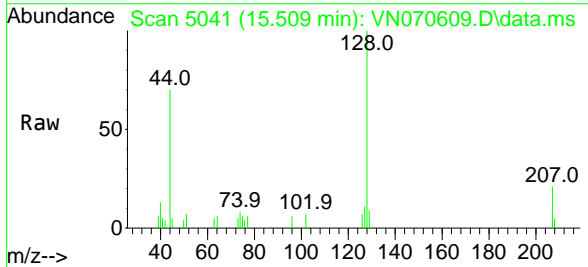


Tgt Ion:180 Resp: 1676

Ion	Ratio	Lower	Upper
180	100		
182	91.6	48.3	144.9
145	27.6	14.5	43.5

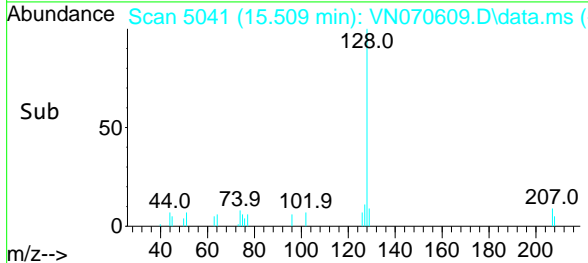
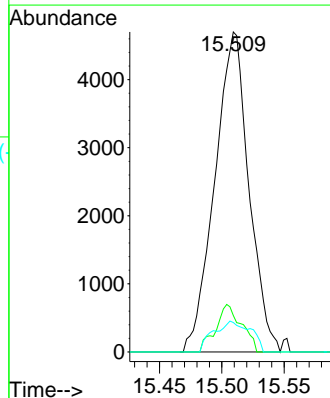


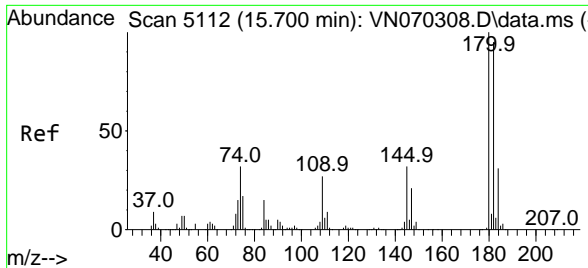
#95
 Naphthalene
 Concen: 2.257 ug/l
 RT: 15.509 min Scan# 5041
 Delta R.T. 0.005 min
 Lab File: VN070609.D
 Acq: 13 Jan 2022 14:08



Tgt Ion:128 Resp: 8950

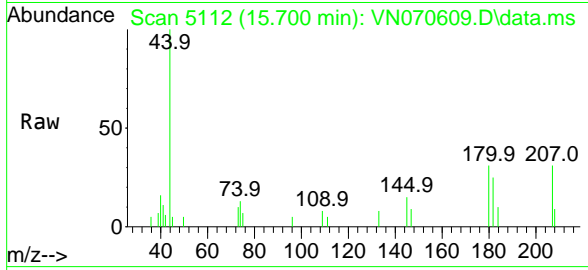
Ion	Ratio	Lower	Upper
128	100		
127	11.2	10.5	15.7
129	10.4	8.7	13.1





#96
 1,2,3-Trichlorobenzene
 Concen: 1.045 ug/l
 RT: 15.700 min Scan# 51
 Delta R.T. -0.000 min
 Lab File: VN070609.D
 Acq: 13 Jan 2022 14:08

Instrument :
 MSVOA_N
 ClientSampleId :
 IBLK



Tgt Ion:180 Resp: 1448

Ion	Ratio	Lower	Upper
180	100		
182	126.6	47.4	142.2
145	43.6	15.0	45.1

