

Data Path : Z:\voasrv\HPCHEM1\MSVOA\_N\Data\VN011525\  
 Data File : VN085452.D  
 Acq On : 15 Jan 2025 11:26  
 Operator : JC\MD  
 Sample : Q1062-04 10X  
 Misc : 5.0mL/MSVOA\_N/WATER  
 ALS Vial : 7 Sample Multiplier: 1

Instrument :  
 MSVOA\_N  
 ClientSampleId :  
 BP-VPB-190A-GW-898-900

Quant Time: Jan 16 00:55:29 2025  
 Quant Method : Z:\voasrv\HPCHEM1\MSVOA\_N\methods\82N011425W.M  
 Quant Title : SW846 8260  
 QLast Update : Wed Jan 15 02:16:08 2025  
 Response via : Initial Calibration

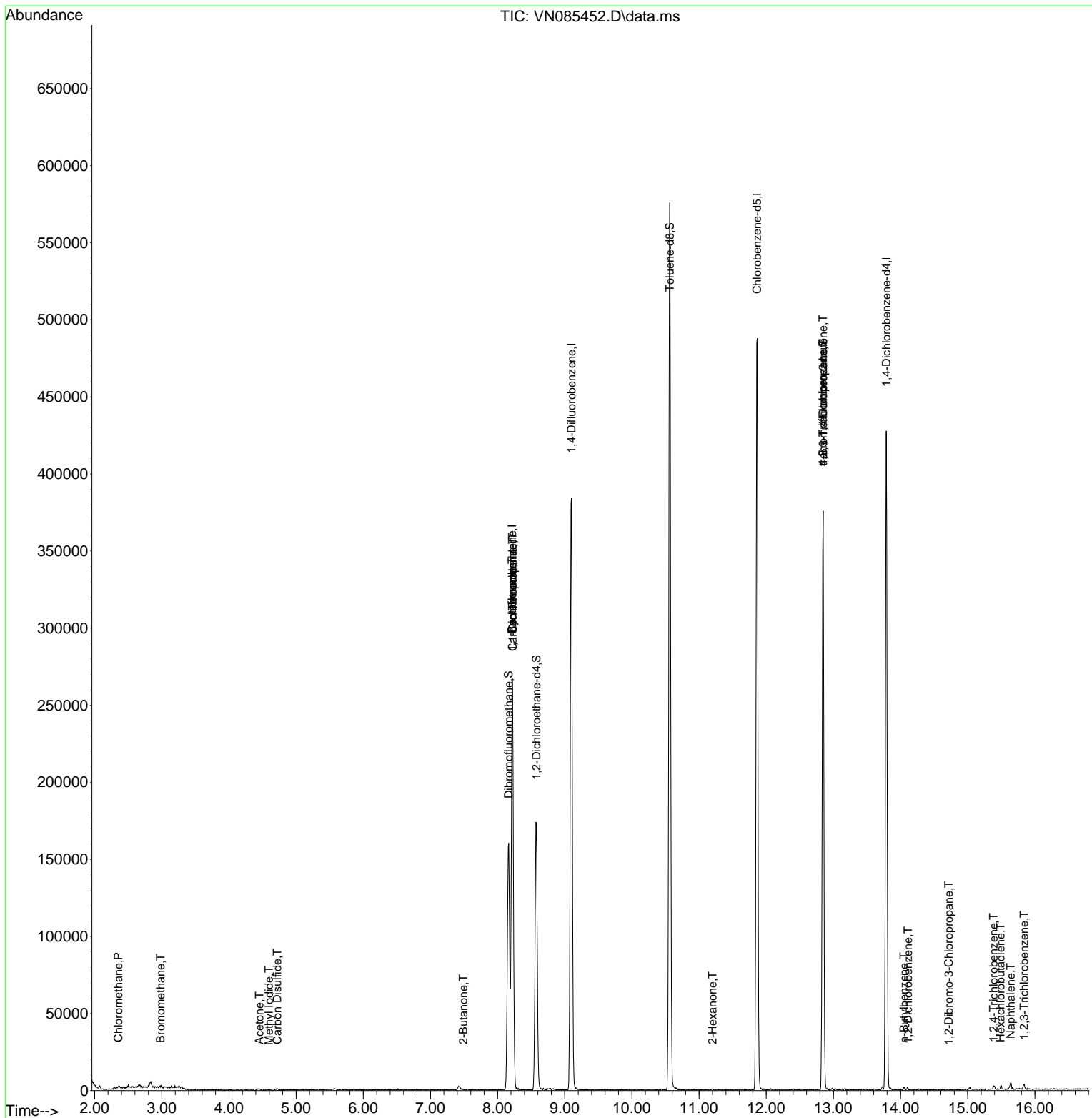
Compound	R.T.	QIon	Response	Conc	Units	Dev(Min)
-----						
Internal Standards						
1) Pentafluorobenzene	8.218	168	175474	50.000	ug/l	0.00
34) 1,4-Difluorobenzene	9.100	114	316452	50.000	ug/l	0.00
63) Chlorobenzene-d5	11.865	117	274227	50.000	ug/l	0.00
72) 1,4-Dichlorobenzene-d4	13.788	152	107831	50.000	ug/l	0.00
System Monitoring Compounds						
33) 1,2-Dichloroethane-d4	8.577	65	149471	52.770	ug/l	0.00
Spiked Amount	50.000	Range 74 - 125	Recovery	=	105.540%	
35) Dibromofluoromethane	8.165	113	114177	52.007	ug/l	0.00
Spiked Amount	50.000	Range 75 - 124	Recovery	=	104.020%	
50) Toluene-d8	10.565	98	384211	49.257	ug/l	0.00
Spiked Amount	50.000	Range 86 - 113	Recovery	=	98.520%	
62) 4-Bromofluorobenzene	12.847	95	123439	46.262	ug/l	0.00
Spiked Amount	50.000	Range 77 - 121	Recovery	=	92.520%	
Target Compounds						
						Qvalue
3) Chloromethane	2.353	50	744	0.289	ug/l #	41
5) Bromomethane	2.983	94	797	0.510	ug/l #	68
10) Methyl Iodide	4.594	142	581	0.240	ug/l #	90
16) Acetone	4.453	43	1932	2.111	ug/l	95
17) Carbon Disulfide	4.718	76	1747	0.301	ug/l #	76
25) 2-Butanone	7.488	43	581	0.431	ug/l #	50
31) Cyclohexane	8.218	56	5178	1.440	ug/l #	11
36) 1,1-Dichloropropene	8.224	75	17176	5.574	ug/l #	50
38) Carbon Tetrachloride	8.224	117	20247	5.740	ug/l #	19
59) 2-Hexanone	11.200	43	510	0.251	ug/l #	57
76) 1,2,3-Trichloropropane	12.847	75	70805	32.306	ug/l #	1
81) trans-1,4-Dichloro-2-b...	12.847	75	70805	87.406	ug/l #	3
89) n-Butylbenzene	14.053	91	1436	0.286	ug/l #	81
91) 1,2-Dichlorobenzene	14.111	146	716	0.205	ug/l	92
92) 1,2-Dibromo-3-Chloropr...	14.717	75	120	0.256	ug/l #	8
93) 1,2,4-Trichlorobenzene	15.388	180	1023	0.630	ug/l #	76
94) Hexachlorobutadiene	15.488	225	523	0.607	ug/l	88
95) Naphthalene	15.641	128	4859	1.003	ug/l	95
96) 1,2,3-Trichlorobenzene	15.841	180	1159	0.706	ug/l	91
-----						

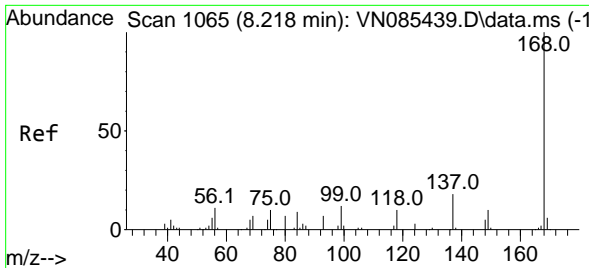
(#) = qualifier out of range (m) = manual integration (+) = signals summed

Data Path : Z:\voasrv\HPCHEM1\MSVOA\_N\Data\VN011525\  
 Data File : VN085452.D  
 Acq On : 15 Jan 2025 11:26  
 Operator : JC\MD  
 Sample : Q1062-04 10X  
 Misc : 5.0mL/MSVOA\_N/WATER  
 ALS Vial : 7 Sample Multiplier: 1

Instrument :  
 MSVOA\_N  
 ClientSampleId :  
 BP-VPB-190A-GW-898-900

Quant Time: Jan 16 00:55:29 2025  
 Quant Method : Z:\voasrv\HPCHEM1\MSVOA\_N\methods\82N011425W.M  
 Quant Title : SW846 8260  
 QLast Update : Wed Jan 15 02:16:08 2025  
 Response via : Initial Calibration

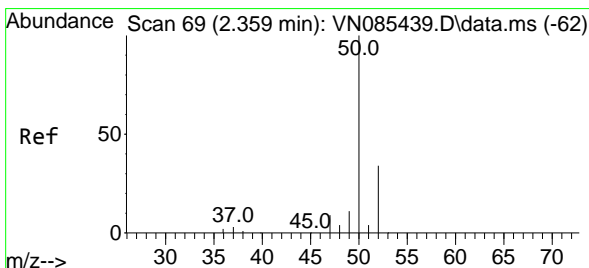
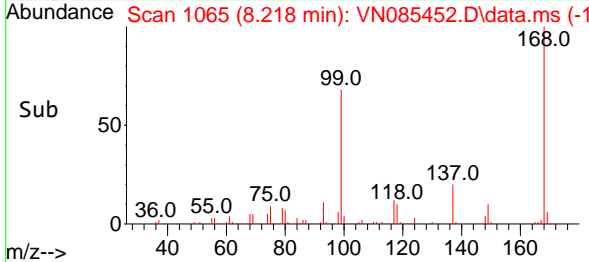
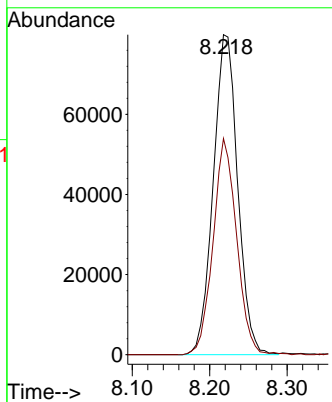
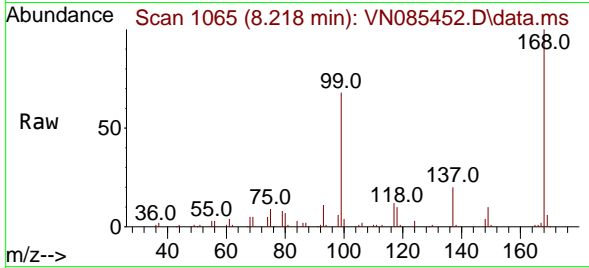




#1  
 Pentafluorobenzene  
 Concen: 50.000 ug/l  
 RT: 8.218 min Scan# 1065  
 Delta R.T. -0.000 min  
 Lab File: VN085452.D  
 Acq: 15 Jan 2025 11:26

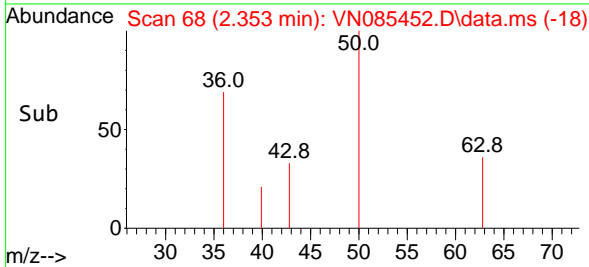
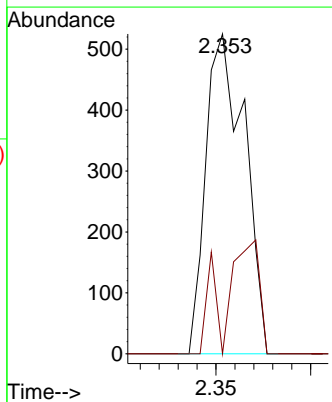
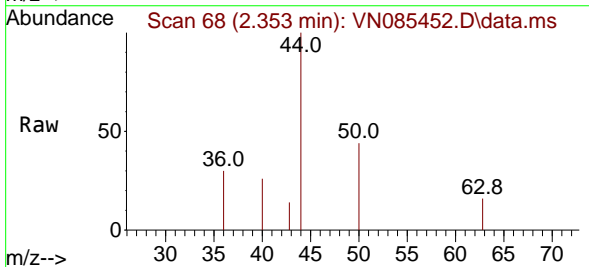
Instrument : MSVOA\_N  
 ClientSampleId : BP-VPB-190A-GW-898-900

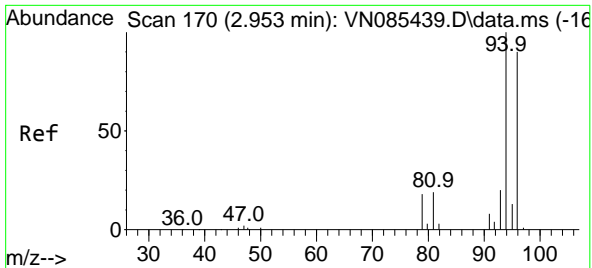
Tgt Ion:168 Resp: 175474  
 Ion Ratio Lower Upper  
 168 100  
 99 67.5 53.6 80.4



#3  
 Chloromethane  
 Concen: 0.289 ug/l  
 RT: 2.353 min Scan# 68  
 Delta R.T. -0.006 min  
 Lab File: VN085452.D  
 Acq: 15 Jan 2025 11:26

Tgt Ion: 50 Resp: 744  
 Ion Ratio Lower Upper  
 50 100  
 52 0.0 27.0 40.6#

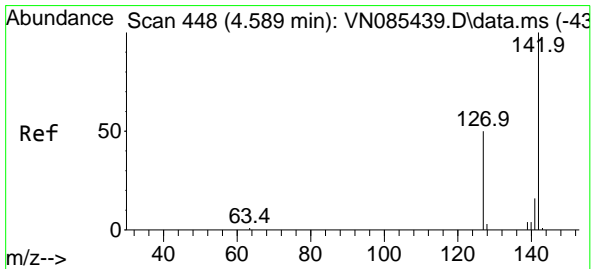
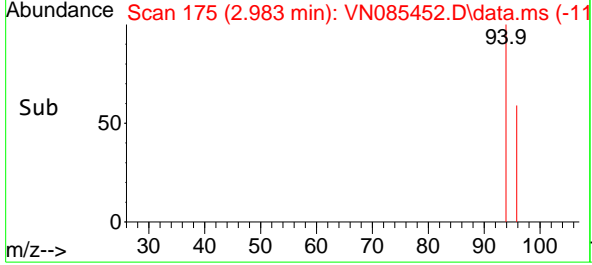
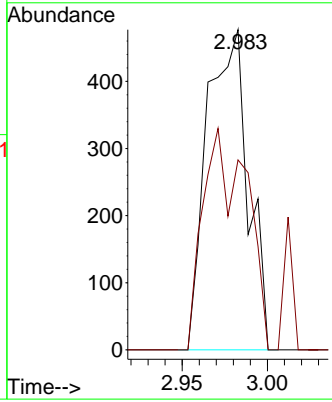
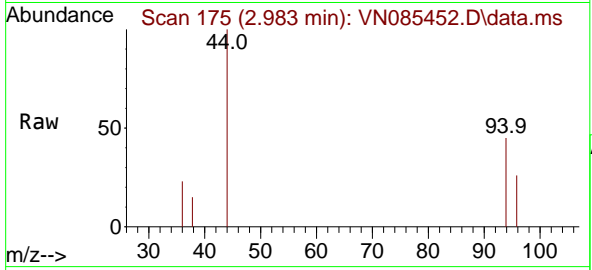




#5  
 Bromomethane  
 Concen: 0.510 ug/l  
 RT: 2.983 min Scan# 11  
 Delta R.T. 0.029 min  
 Lab File: VN085452.D  
 Acq: 15 Jan 2025 11:26

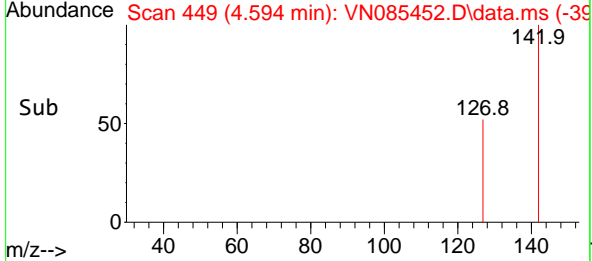
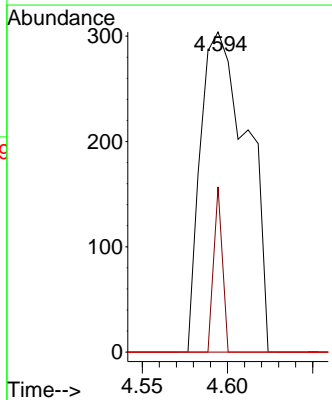
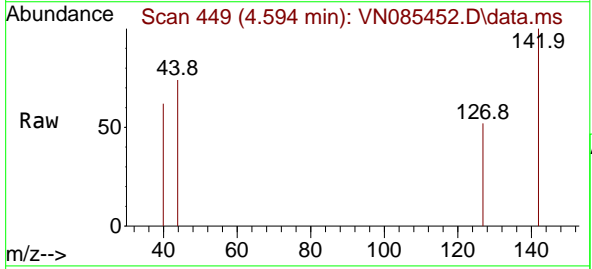
Instrument : MSVOA\_N  
 ClientSampleId : BP-VPB-190A-GW-898-900

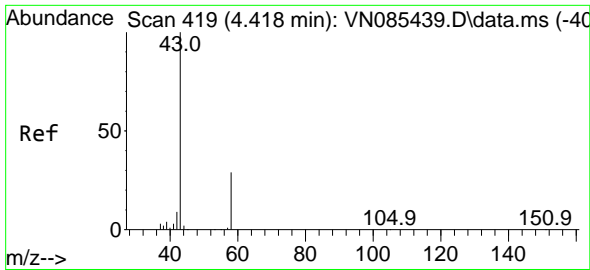
Tgt Ion: 94 Resp: 797  
 Ion Ratio Lower Upper  
 94 100  
 96 59.3 71.8 107.6#



#10  
 Methyl Iodide  
 Concen: 0.240 ug/l  
 RT: 4.594 min Scan# 449  
 Delta R.T. 0.006 min  
 Lab File: VN085452.D  
 Acq: 15 Jan 2025 11:26

Tgt Ion:142 Resp: 581  
 Ion Ratio Lower Upper  
 142 100  
 127 51.6 40.3 60.5  
 141 0.0 12.8 19.2#

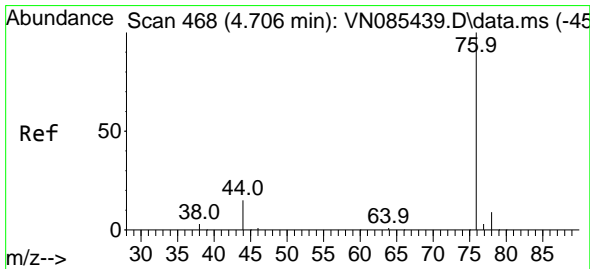
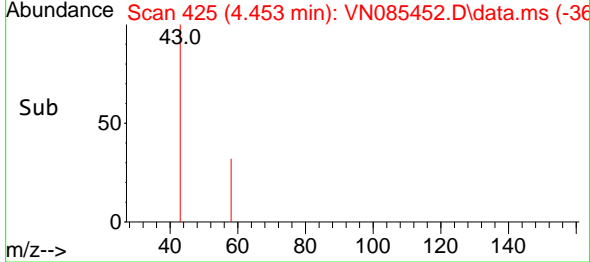
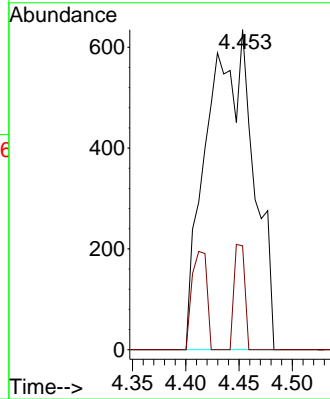
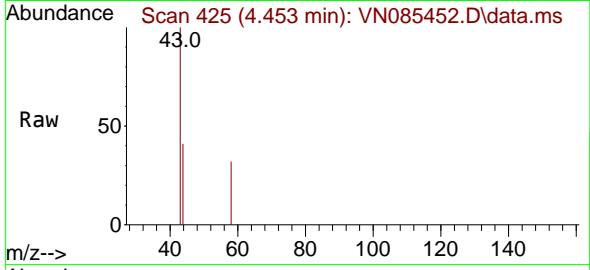




#16  
 Acetone  
 Concen: 2.111 ug/l  
 RT: 4.453 min Scan# 41  
 Delta R.T. 0.035 min  
 Lab File: VN085452.D  
 Acq: 15 Jan 2025 11:26

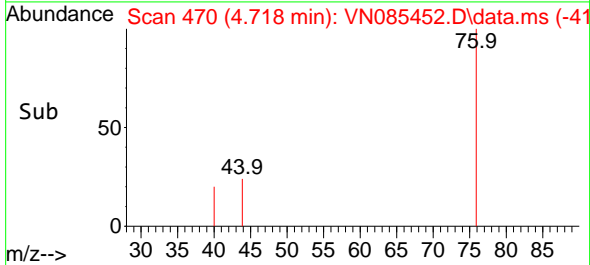
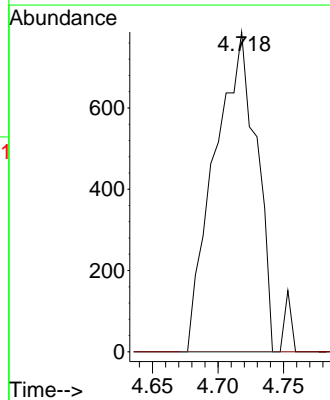
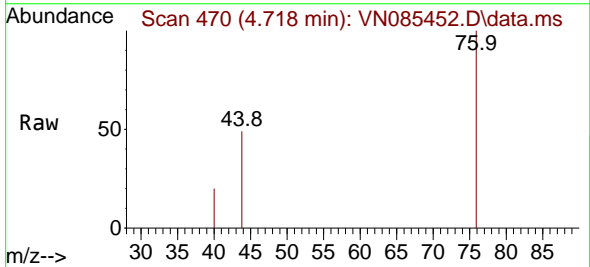
Instrument :  
 MSVOA\_N  
 ClientSampleId :  
 BP-VPB-190A-GW-898-900

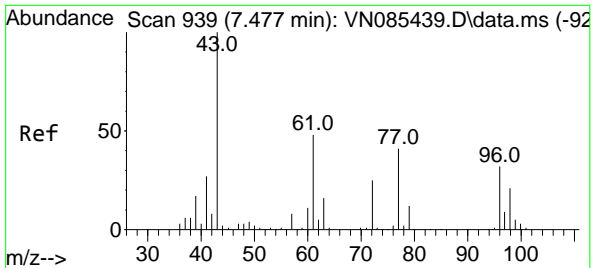
Tgt Ion: 43 Resp: 1932  
 Ion Ratio Lower Upper  
 43 100  
 58 32.4 23.8 35.6



#17  
 Carbon Disulfide  
 Concen: 0.301 ug/l  
 RT: 4.718 min Scan# 470  
 Delta R.T. 0.012 min  
 Lab File: VN085452.D  
 Acq: 15 Jan 2025 11:26

Tgt Ion: 76 Resp: 1747  
 Ion Ratio Lower Upper  
 76 100  
 78 0.0 6.9 10.3#

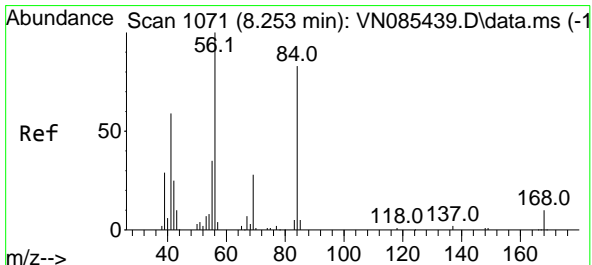
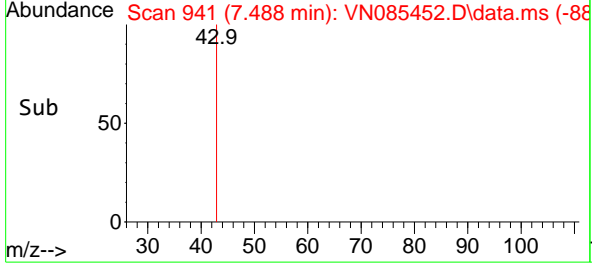
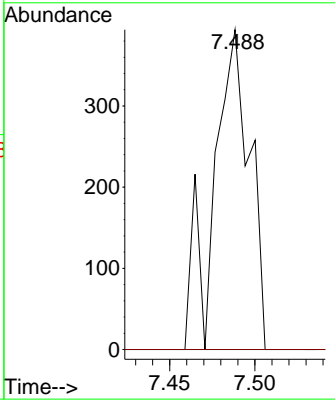
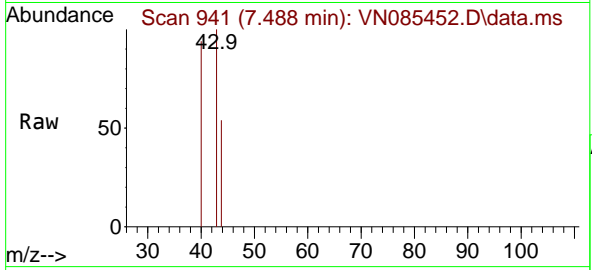




#25  
 2-Butanone  
 Concen: 0.431 ug/l  
 RT: 7.488 min Scan# 941  
 Delta R.T. 0.012 min  
 Lab File: VN085452.D  
 Acq: 15 Jan 2025 11:26

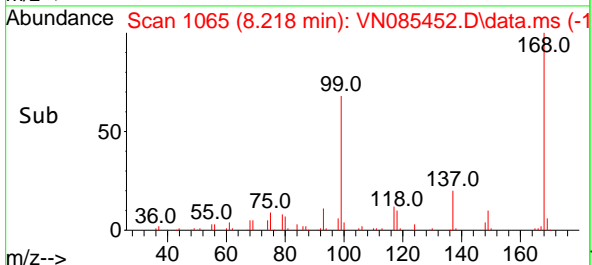
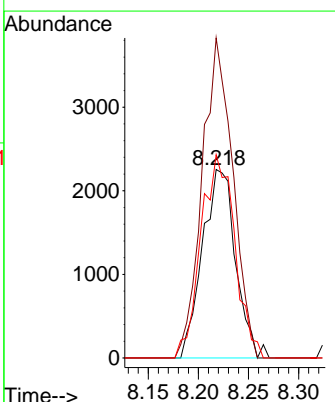
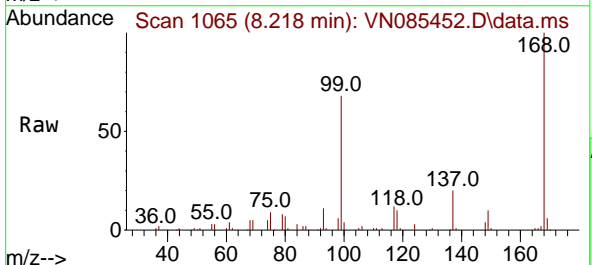
Instrument : MSVOA\_N  
 ClientSampleId : BP-VPB-190A-GW-898-900

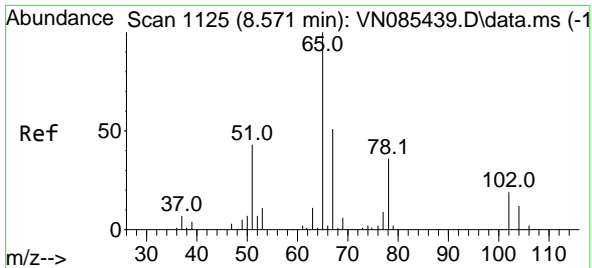
Tgt Ion	Resp	Lower	Upper
43	100		
72	0.0	20.2	30.4#



#31  
 Cyclohexane  
 Concen: 1.440 ug/l  
 RT: 8.218 min Scan# 1065  
 Delta R.T. -0.035 min  
 Lab File: VN085452.D  
 Acq: 15 Jan 2025 11:26

Tgt Ion	Resp	Lower	Upper
56	100		
69	169.8	22.2	33.4#
84	107.8	66.4	99.6#

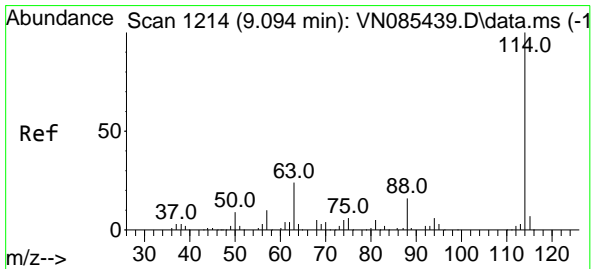
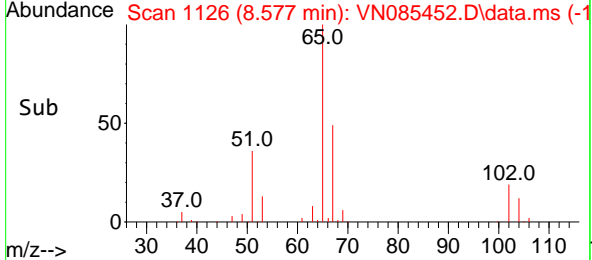
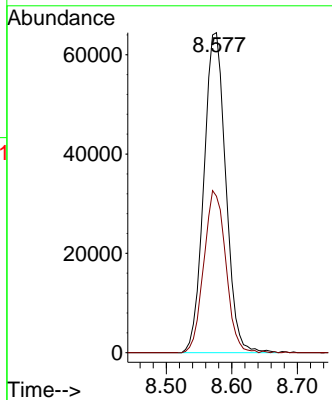
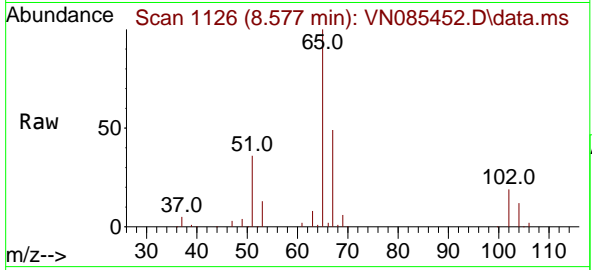




#33  
 1,2-Dichloroethane-d4  
 Concen: 52.770 ug/l  
 RT: 8.577 min Scan# 1126  
 Delta R.T. 0.006 min  
 Lab File: VN085452.D  
 Acq: 15 Jan 2025 11:26

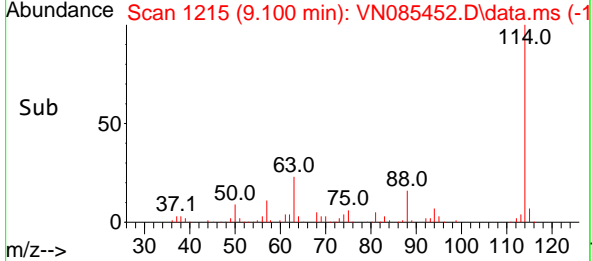
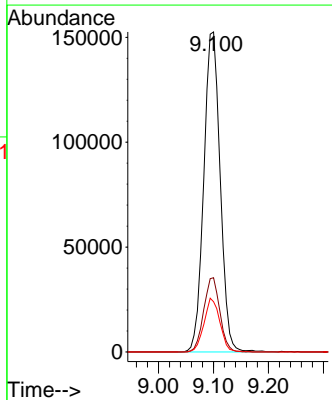
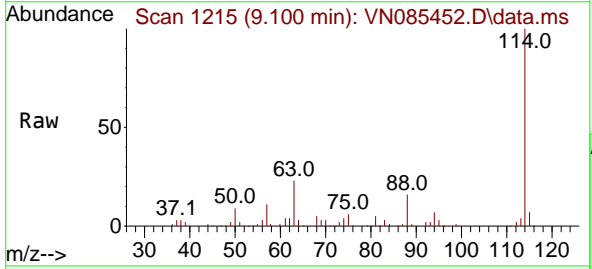
Instrument : MSVOA\_N  
 ClientSampleId : BP-VPB-190A-GW-898-900

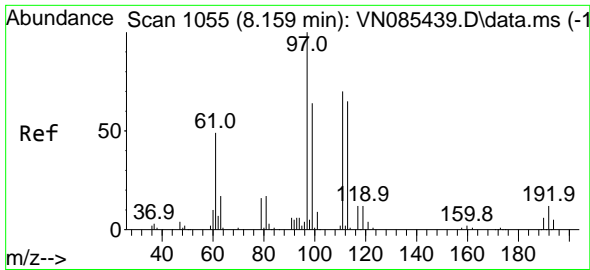
Tgt Ion: 65 Resp: 149471  
 Ion Ratio Lower Upper  
 65 100  
 67 50.8 0.0 101.6



#34  
 1,4-Difluorobenzene  
 Concen: 50.000 ug/l  
 RT: 9.100 min Scan# 1215  
 Delta R.T. 0.006 min  
 Lab File: VN085452.D  
 Acq: 15 Jan 2025 11:26

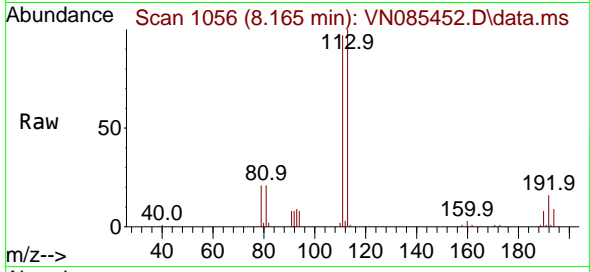
Tgt Ion:114 Resp: 316452  
 Ion Ratio Lower Upper  
 114 100  
 63 23.2 0.0 47.6  
 88 15.7 0.0 32.6



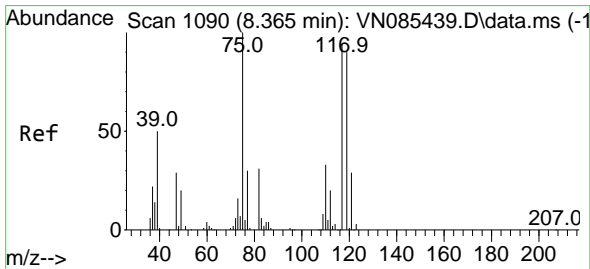
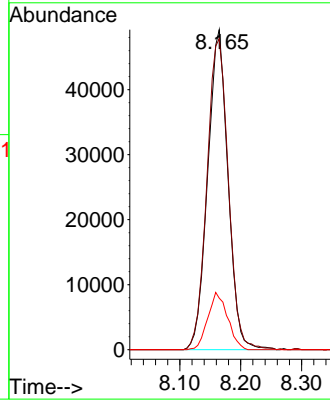
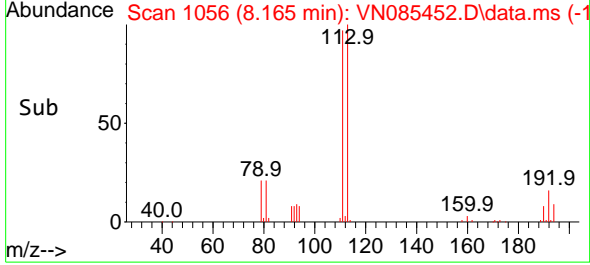


#35  
 Dibromofluoromethane  
 Concen: 52.007 ug/l  
 RT: 8.165 min Scan# 1066  
 Delta R.T. 0.006 min  
 Lab File: VN085452.D  
 Acq: 15 Jan 2025 11:26

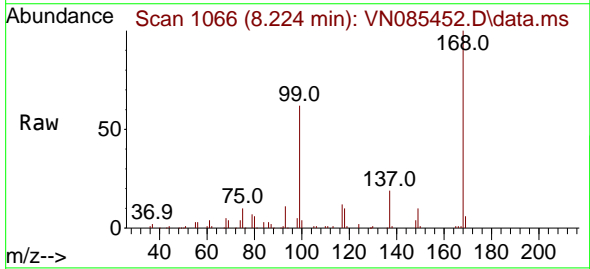
Instrument : MSVOA\_N  
 ClientSampleId : BP-VPB-190A-GW-898-900



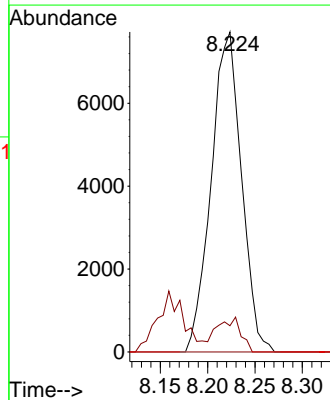
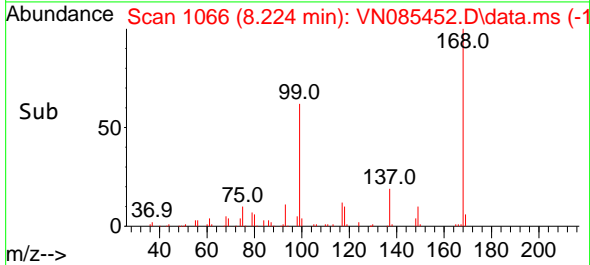
Tgt Ion:113 Resp: 114177  
 Ion Ratio Lower Upper  
 113 100  
 111 102.3 82.7 124.1  
 192 17.4 14.3 21.5



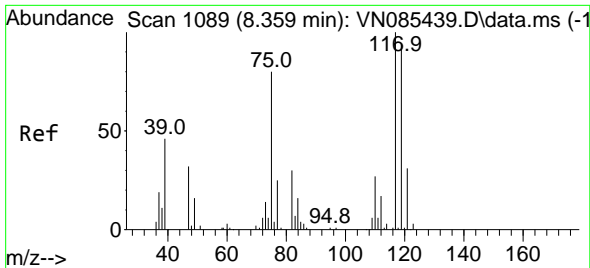
#36  
 1,1-Dichloropropene  
 Concen: 5.574 ug/l  
 RT: 8.224 min Scan# 1066  
 Delta R.T. -0.141 min  
 Lab File: VN085452.D  
 Acq: 15 Jan 2025 11:26



Tgt Ion: 75 Resp: 17176  
 Ion Ratio Lower Upper  
 75 100  
 110 8.3 16.5 49.5#  
 77 0.0 24.4 36.6#

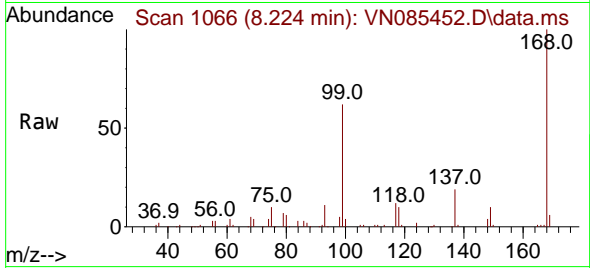




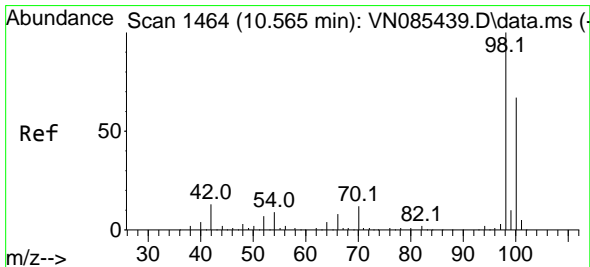
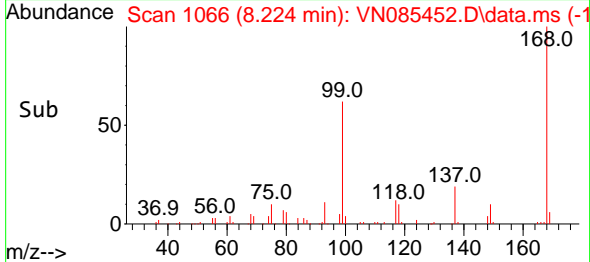
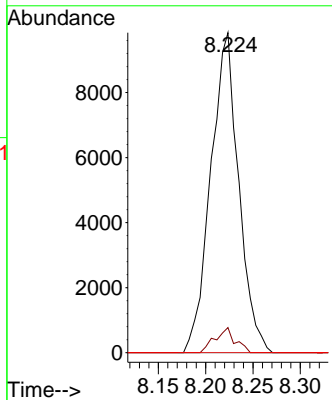


#38  
 Carbon Tetrachloride  
 Concen: 5.740 ug/l  
 RT: 8.224 min Scan# 1066  
 Delta R.T. -0.135 min  
 Lab File: VN085452.D  
 Acq: 15 Jan 2025 11:26

Instrument : MSVOA\_N  
 ClientSampleId : BP-VPB-190A-GW-898-900

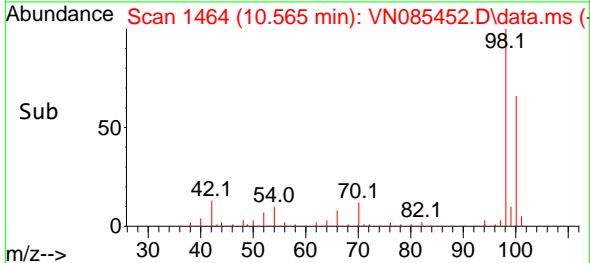
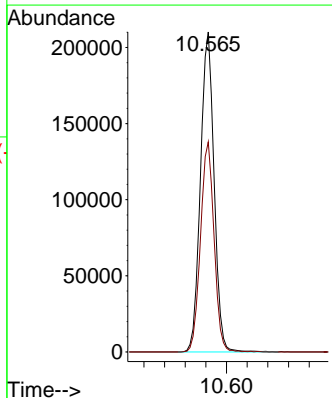
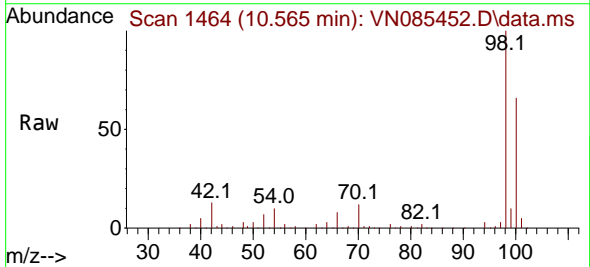


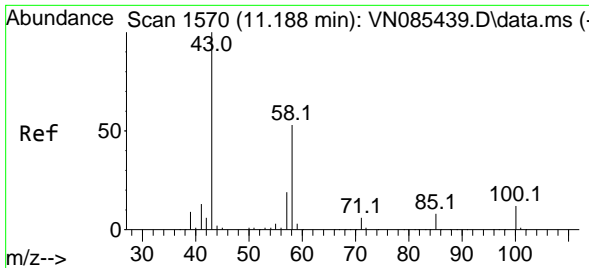
Tgt Ion:117 Resp: 20247  
 Ion Ratio Lower Upper  
 117 100  
 119 7.9 75.4 113.2#  
 121 0.0 24.6 37.0#



#50  
 Toluene-d8  
 Concen: 49.257 ug/l  
 RT: 10.565 min Scan# 1464  
 Delta R.T. -0.000 min  
 Lab File: VN085452.D  
 Acq: 15 Jan 2025 11:26

Tgt Ion: 98 Resp: 384211  
 Ion Ratio Lower Upper  
 98 100  
 100 65.2 52.2 78.4

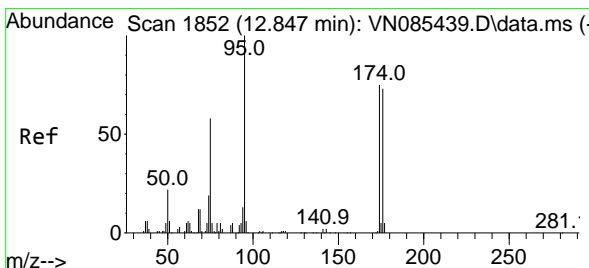
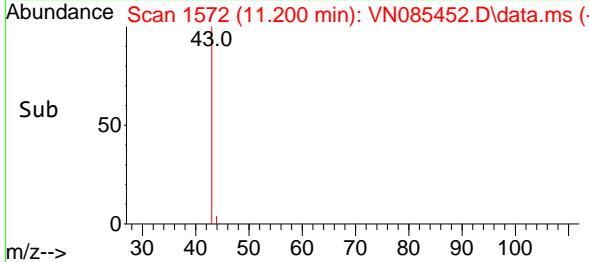
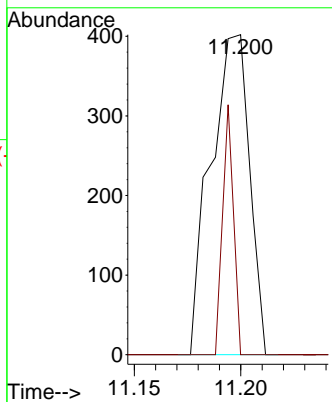
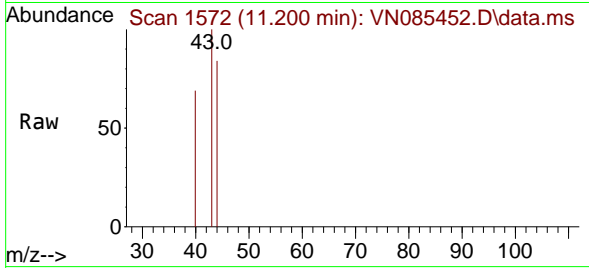




#59  
 2-Hexanone  
 Concen: 0.251 ug/l  
 RT: 11.200 min Scan# 1111  
 Delta R.T. 0.012 min  
 Lab File: VN085452.D  
 Acq: 15 Jan 2025 11:26

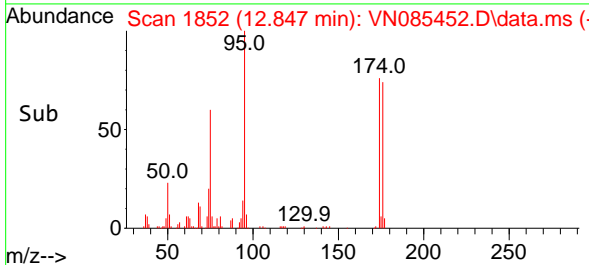
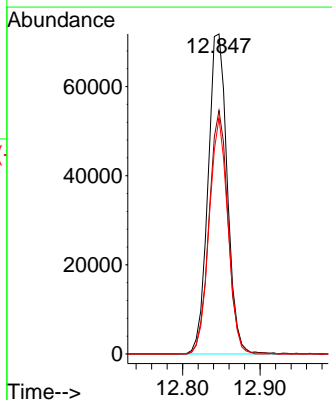
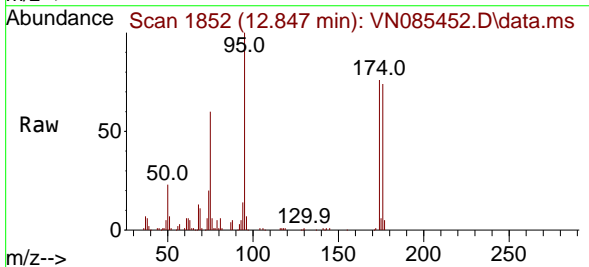
Instrument : MSVOA\_N  
 ClientSampleId : BP-VPB-190A-GW-898-900

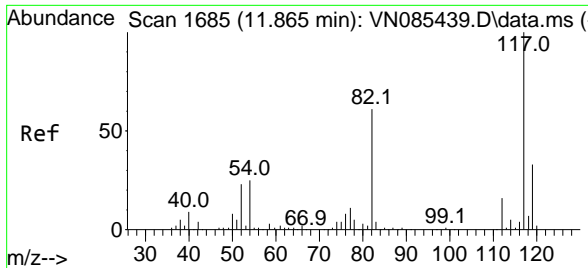
Tgt Ion: 43 Resp: 510  
 Ion Ratio Lower Upper  
 43 100  
 58 21.8 26.2 78.6#



#62  
 4-Bromofluorobenzene  
 Concen: 46.262 ug/l  
 RT: 12.847 min Scan# 1852  
 Delta R.T. -0.000 min  
 Lab File: VN085452.D  
 Acq: 15 Jan 2025 11:26

Tgt Ion: 95 Resp: 123439  
 Ion Ratio Lower Upper  
 95 100  
 174 75.2 0.0 145.0  
 176 71.6 0.0 142.4



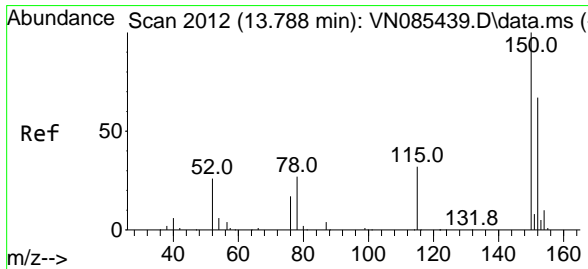
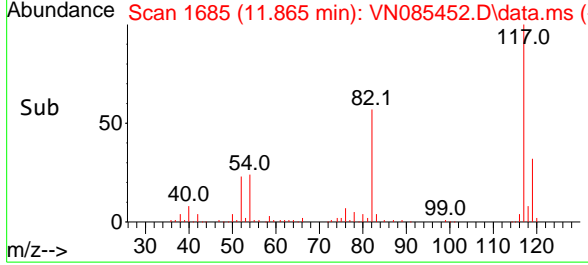
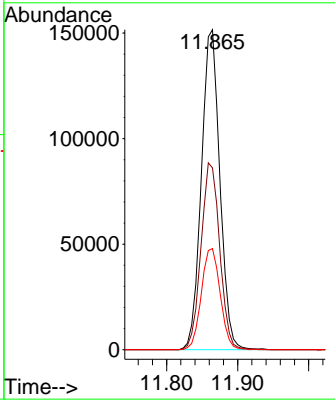
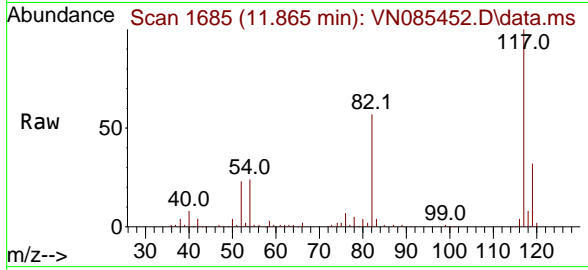


#63  
 Chlorobenzene-d5  
 Concen: 50.000 ug/l  
 RT: 11.865 min Scan# 11  
 Delta R.T. -0.000 min  
 Lab File: VN085452.D  
 Acq: 15 Jan 2025 11:26

Instrument : MSVOA\_N  
 ClientSampleId : BP-VPB-190A-GW-898-900

Tgt Ion:117 Resp: 274227

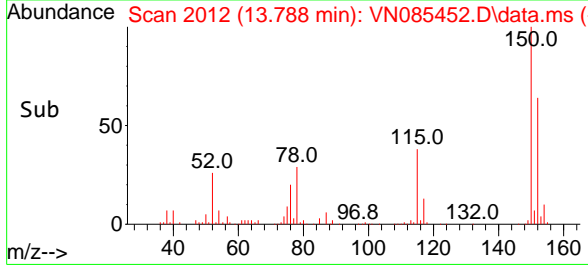
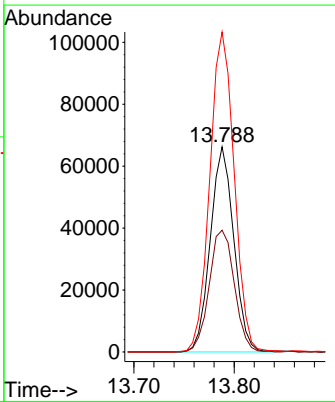
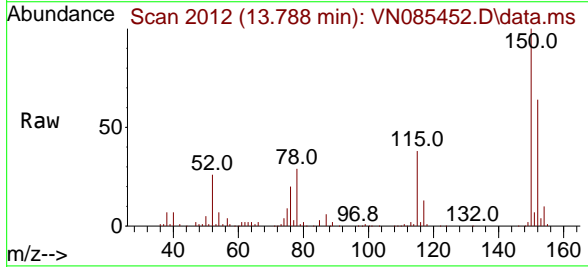
Ion	Ratio	Lower	Upper
117	100		
82	56.8	48.6	72.8
119	31.6	26.6	39.8

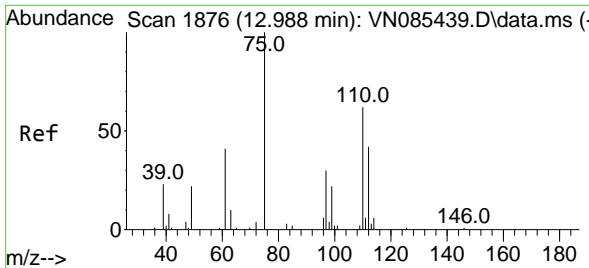


#72  
 1,4-Dichlorobenzene-d4  
 Concen: 50.000 ug/l  
 RT: 13.788 min Scan# 2012  
 Delta R.T. -0.000 min  
 Lab File: VN085452.D  
 Acq: 15 Jan 2025 11:26

Tgt Ion:152 Resp: 107831

Ion	Ratio	Lower	Upper
152	100		
115	63.6	31.1	93.3
150	161.7	0.0	343.6

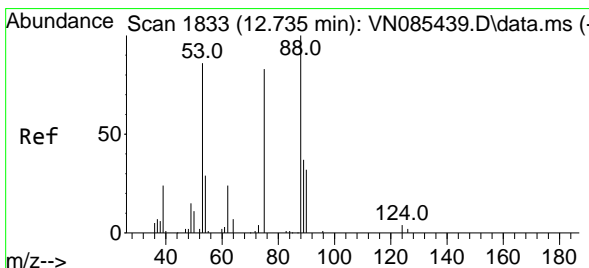
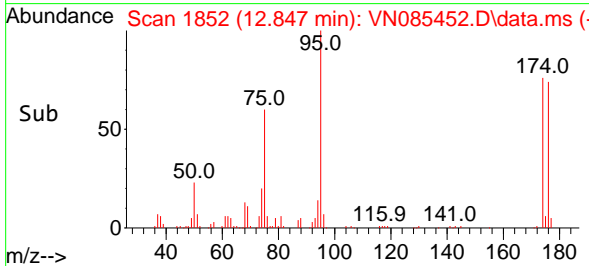
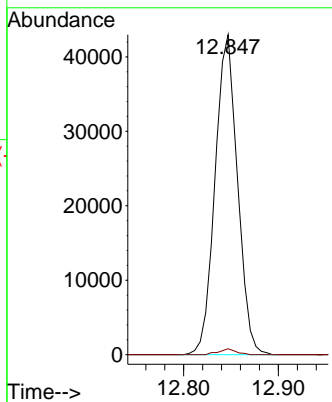
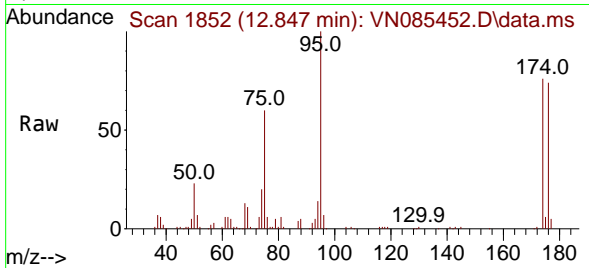




#76  
 1,2,3-Trichloropropane  
 Concen: 32.306 ug/l  
 RT: 12.847 min Scan# 1852  
 Delta R.T. -0.141 min  
 Lab File: VN085452.D  
 Acq: 15 Jan 2025 11:26

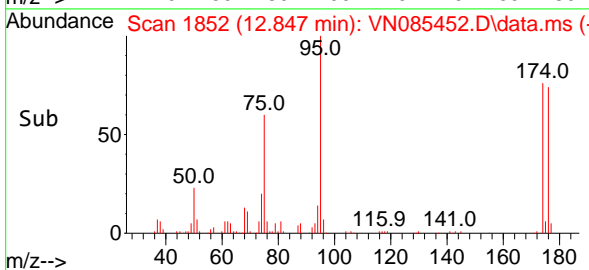
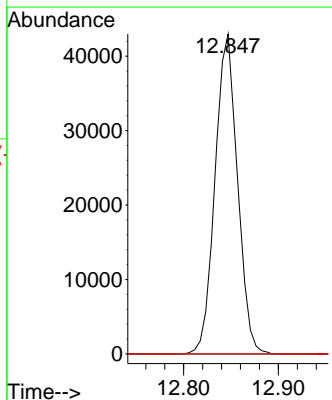
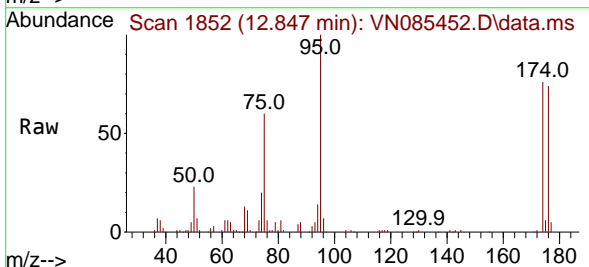
Instrument : MSVOA\_N  
 ClientSampleId : BP-VPB-190A-GW-898-900

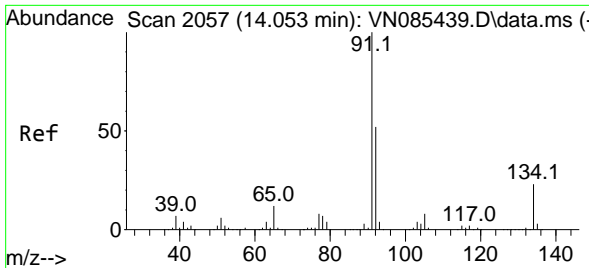
Tgt Ion: 75 Resp: 70805  
 Ion Ratio Lower Upper  
 75 100  
 77 1.4 109.7 329.2#



#81  
 trans-1,4-Dichloro-2-butene  
 Concen: 87.406 ug/l  
 RT: 12.847 min Scan# 1852  
 Delta R.T. 0.112 min  
 Lab File: VN085452.D  
 Acq: 15 Jan 2025 11:26

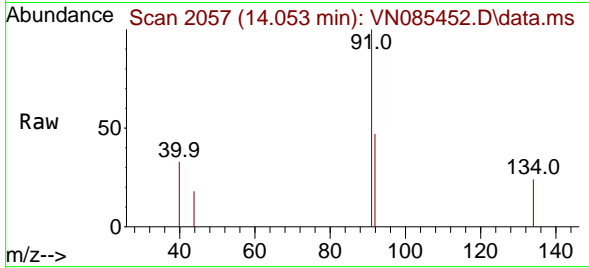
Tgt Ion: 75 Resp: 70805  
 Ion Ratio Lower Upper  
 75 100  
 53 0.0 95.6 143.4#  
 89 0.0 37.0 55.6#





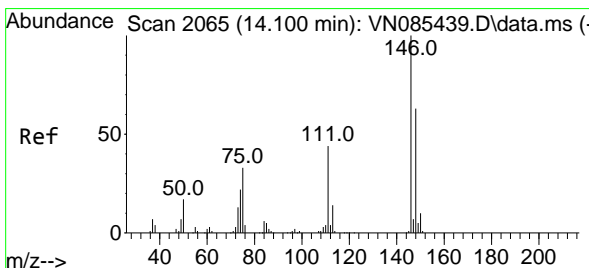
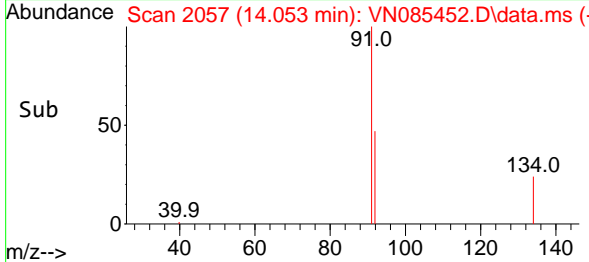
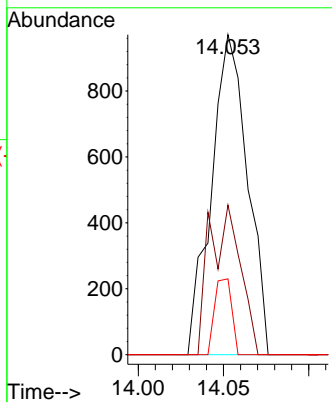
#89  
 n-Butylbenzene  
 Concen: 0.286 ug/l  
 RT: 14.053 min Scan# 2057  
 Delta R.T. -0.000 min  
 Lab File: VN085452.D  
 Acq: 15 Jan 2025 11:26

Instrument : MSVOA\_N  
 ClientSampleId : BP-VPB-190A-GW-898-900



Tgt Ion: 91 Resp: 1436

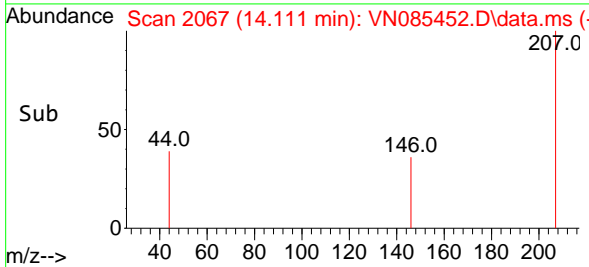
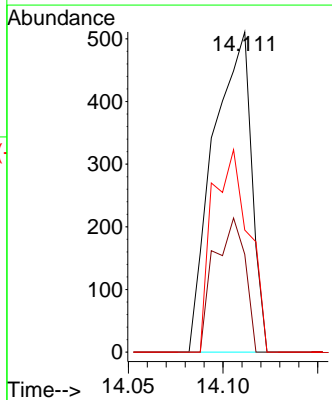
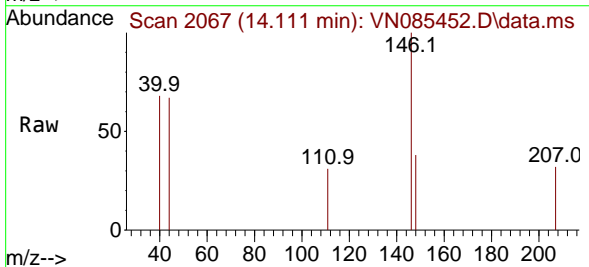
Ion	Ratio	Lower	Upper
91	100		
92	39.8	25.8	77.3
134	11.1	11.7	35.1

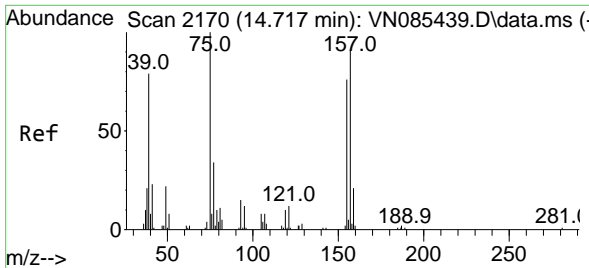


#91  
 1,2-Dichlorobenzene  
 Concen: 0.205 ug/l  
 RT: 14.111 min Scan# 2067  
 Delta R.T. 0.012 min  
 Lab File: VN085452.D  
 Acq: 15 Jan 2025 11:26

Tgt Ion: 146 Resp: 716

Ion	Ratio	Lower	Upper
146	100		
111	33.8	21.7	65.1
148	60.1	31.4	94.2

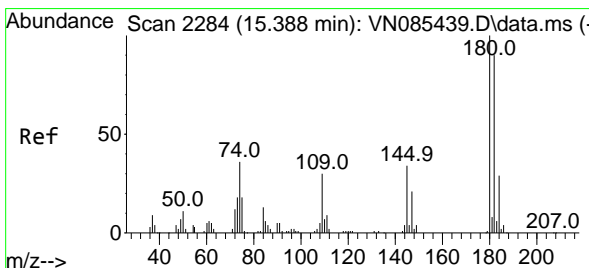
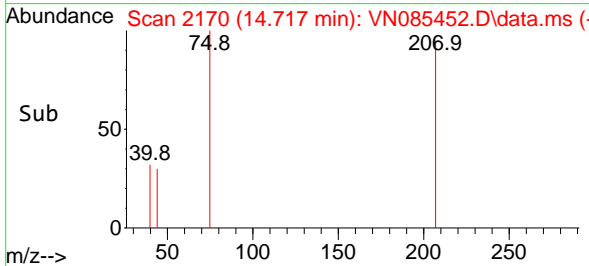
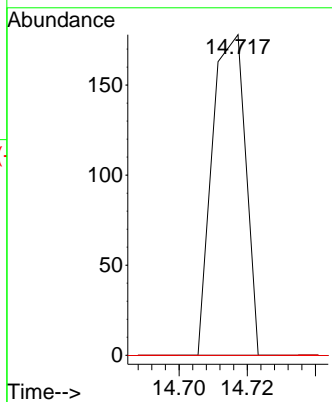
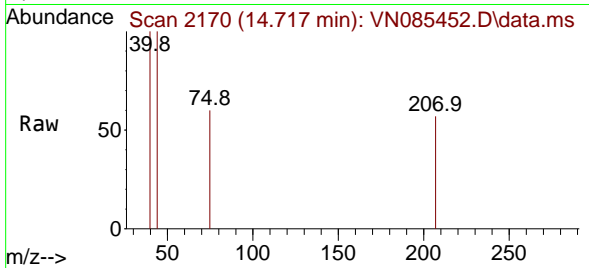




#92  
 1,2-Dibromo-3-Chloropropane  
 Concen: 0.256 ug/l  
 RT: 14.717 min Scan# 2170  
 Delta R.T. -0.000 min  
 Lab File: VN085452.D  
 Acq: 15 Jan 2025 11:26

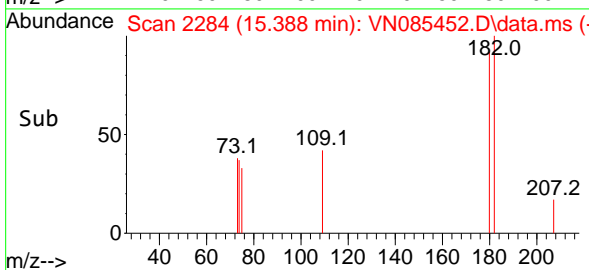
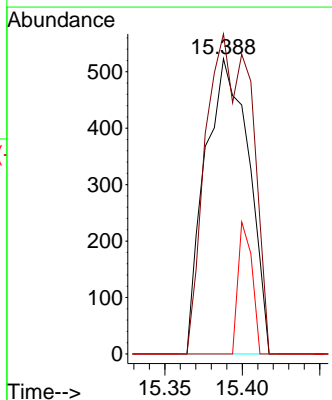
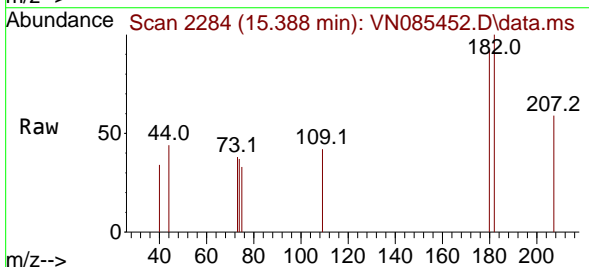
Instrument : MSVOA\_N  
 ClientSampleId : BP-VPB-190A-GW-898-900

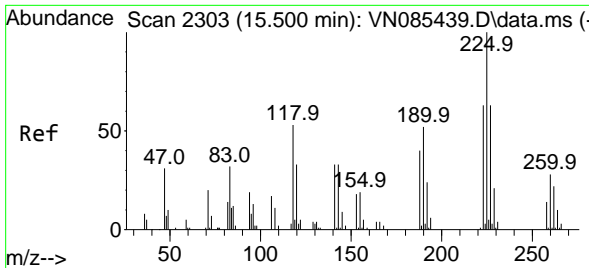
Tgt Ion	Resp	Lower	Upper
75	120		
155	0.0	36.4	109.2#
157	0.0	45.4	136.1#



#93  
 1,2,4-Trichlorobenzene  
 Concen: 0.630 ug/l  
 RT: 15.388 min Scan# 2284  
 Delta R.T. -0.000 min  
 Lab File: VN085452.D  
 Acq: 15 Jan 2025 11:26

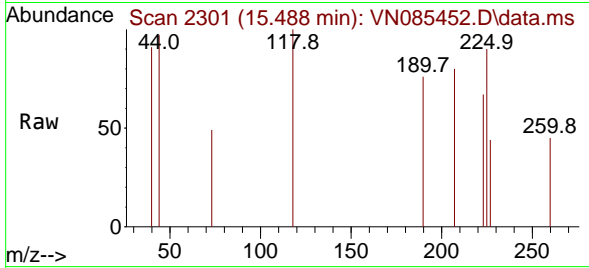
Tgt Ion	Resp	Lower	Upper
180	1023		
182	113.9	46.8	140.3
145	14.2	16.0	48.0#





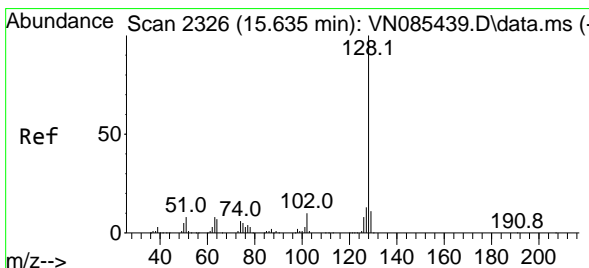
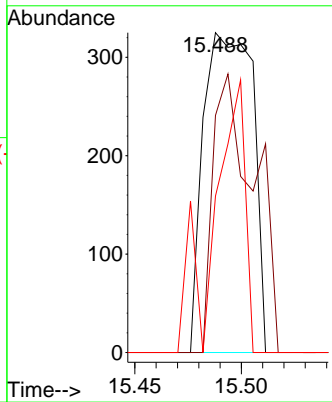
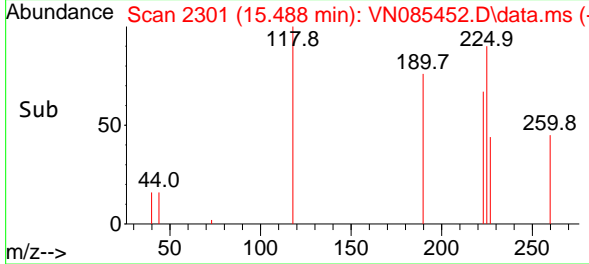
#94  
 Hexachlorobutadiene  
 Concen: 0.607 ug/l  
 RT: 15.488 min Scan# 21  
 Delta R.T. -0.012 min  
 Lab File: VN085452.D  
 Acq: 15 Jan 2025 11:26

Instrument : MSVOA\_N  
 ClientSampleId : BP-VPB-190A-GW-898-900

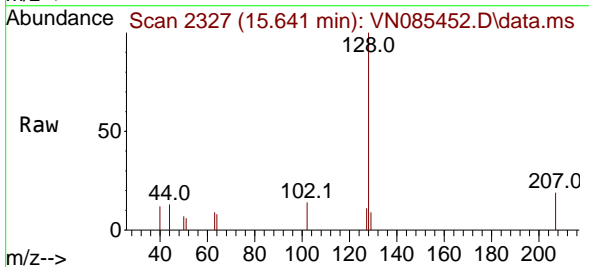


Tgt Ion:225 Resp: 523

Ion	Ratio	Lower	Upper
225	100		
223	72.8	30.7	92.1
227	54.1	30.9	92.5

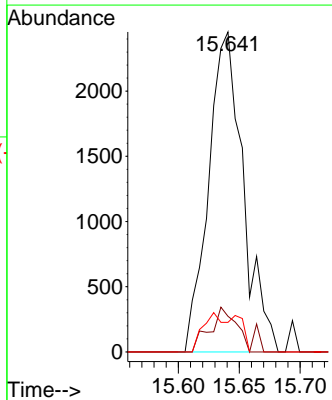
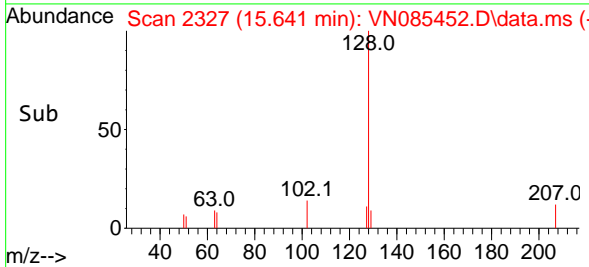


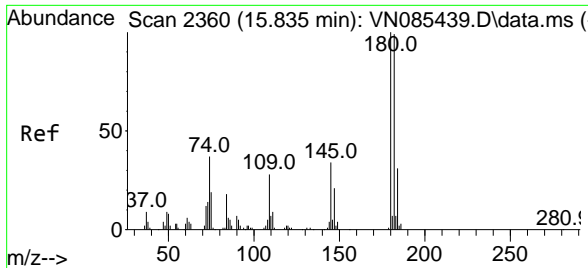
#95  
 Naphthalene  
 Concen: 1.003 ug/l  
 RT: 15.641 min Scan# 2327  
 Delta R.T. 0.006 min  
 Lab File: VN085452.D  
 Acq: 15 Jan 2025 11:26



Tgt Ion:128 Resp: 4859

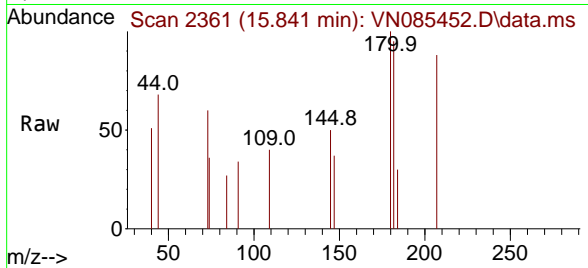
Ion	Ratio	Lower	Upper
128	100		
127	10.7	10.6	16.0
129	12.2	8.8	13.2





#96  
 1,2,3-Trichlorobenzene  
 Concen: 0.706 ug/l  
 RT: 15.841 min Scan# 21  
 Delta R.T. 0.006 min  
 Lab File: VN085452.D  
 Acq: 15 Jan 2025 11:26

Instrument :  
 MSVOA\_N  
 ClientSampleId :  
 BP-VPB-190A-GW-898-900



Tgt Ion:180 Resp: 1159

Ion	Ratio	Lower	Upper
180	100		
182	106.7	47.4	142.2
145	33.0	16.9	50.7

