

Data Path : Z:\voasrv\HPCHEM1\MSVOA\_N\Data\VN011525\  
 Data File : VN085455.D  
 Acq On : 15 Jan 2025 12:37  
 Operator : JC\MD  
 Sample : Q1062-02RE  
 Misc : 5.0mL/MSVOA\_N/WATER  
 ALS Vial : 10 Sample Multiplier: 1

Instrument :  
 MSVOA\_N  
 ClientSampleId :  
 VPB190A-HYD-20250107

Quant Time: Jan 16 00:56:42 2025  
 Quant Method : Z:\voasrv\HPCHEM1\MSVOA\_N\methods\82N011425W.M  
 Quant Title : SW846 8260  
 QLast Update : Wed Jan 15 02:16:08 2025  
 Response via : Initial Calibration

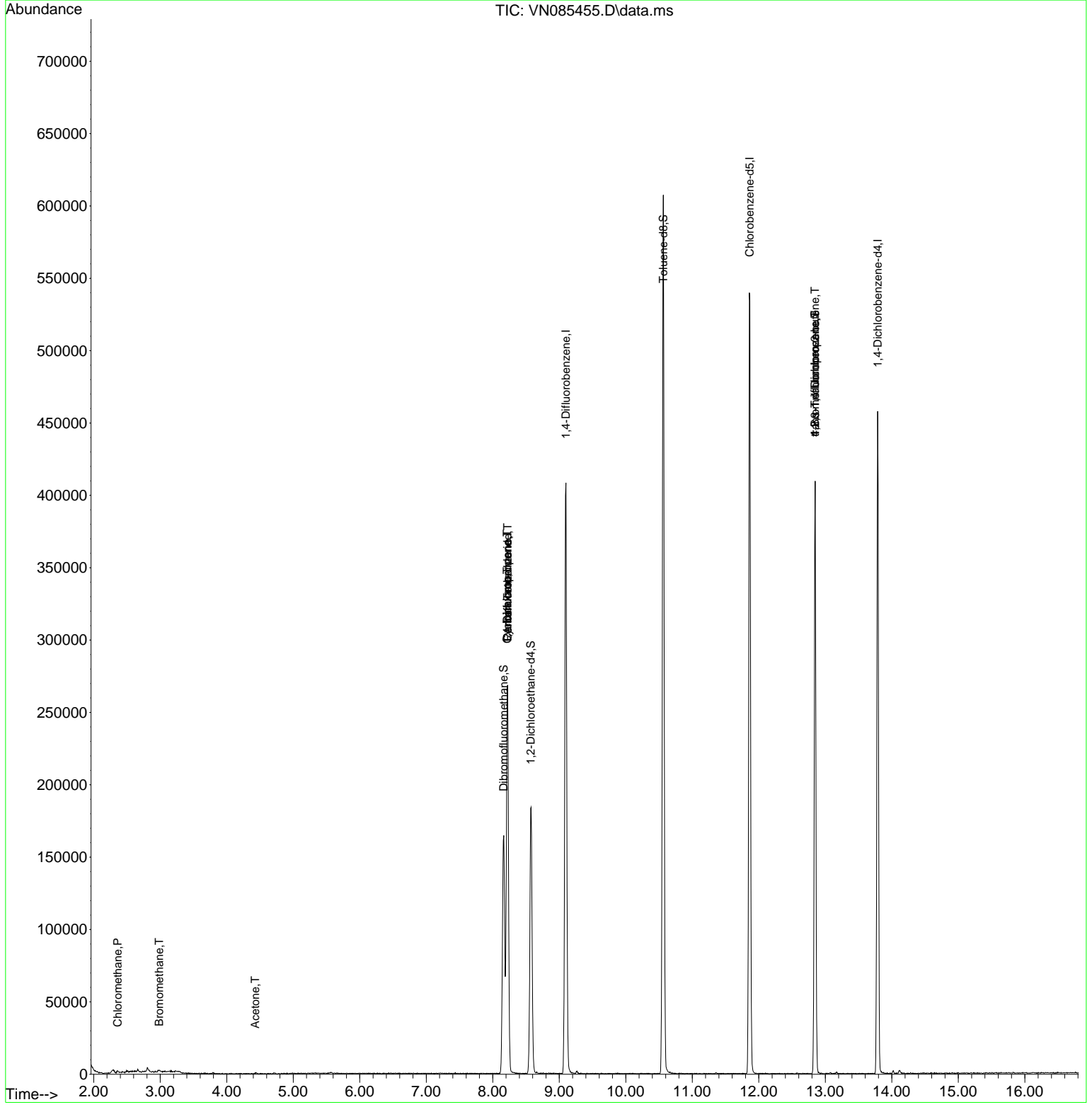
Compound	R.T.	QIon	Response	Conc	Units	Dev(Min)
-----						
Internal Standards						
1) Pentafluorobenzene	8.224	168	183777	50.000	ug/l	0.00
34) 1,4-Difluorobenzene	9.100	114	332391	50.000	ug/l	0.00
63) Chlorobenzene-d5	11.865	117	293220	50.000	ug/l	0.00
72) 1,4-Dichlorobenzene-d4	13.788	152	116419	50.000	ug/l	0.00
System Monitoring Compounds						
33) 1,2-Dichloroethane-d4	8.571	65	157915	53.232	ug/l	0.00
Spiked Amount	50.000	Range 74 - 125	Recovery	=	106.460%	
35) Dibromofluoromethane	8.165	113	118493	51.385	ug/l	0.00
Spiked Amount	50.000	Range 75 - 124	Recovery	=	102.780%	
50) Toluene-d8	10.565	98	403278	49.222	ug/l	0.00
Spiked Amount	50.000	Range 86 - 113	Recovery	=	98.440%	
62) 4-Bromofluorobenzene	12.847	95	131868	47.051	ug/l	0.00
Spiked Amount	50.000	Range 77 - 121	Recovery	=	94.100%	
Target Compounds						
						Qvalue
3) Chloromethane	2.359	50	865	0.321	ug/l #	81
5) Bromomethane	2.983	94	562	0.344	ug/l	95
16) Acetone	4.430	43	909	0.948	ug/l #	45
31) Cyclohexane	8.218	56	5129	1.362	ug/l #	12
36) 1,1-Dichloropropene	8.218	75	17916	5.536	ug/l #	51
38) Carbon Tetrachloride	8.224	117	20653	5.574	ug/l #	20
76) 1,2,3-Trichloropropane	12.847	75	74599	31.526	ug/l #	1
81) trans-1,4-Dichloro-2-b...	12.847	75	74599	85.297	ug/l #	3
-----						

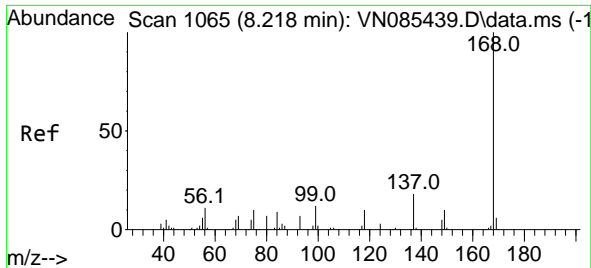
(#) = qualifier out of range (m) = manual integration (+) = signals summed

Data Path : Z:\voasrv\HPCHEM1\MSVOA\_N\Data\VN011525\  
 Data File : VN085455.D  
 Acq On : 15 Jan 2025 12:37  
 Operator : JC\MD  
 Sample : Q1062-02RE  
 Misc : 5.0mL/MSVOA\_N/WATER  
 ALS Vial : 10 Sample Multiplier: 1

Instrument :  
 MSVOA\_N  
 ClientSampleId :  
 VPB190A-HYD-20250107

Quant Time: Jan 16 00:56:42 2025  
 Quant Method : Z:\voasrv\HPCHEM1\MSVOA\_N\methods\82N011425W.M  
 Quant Title : SW846 8260  
 QLast Update : Wed Jan 15 02:16:08 2025  
 Response via : Initial Calibration

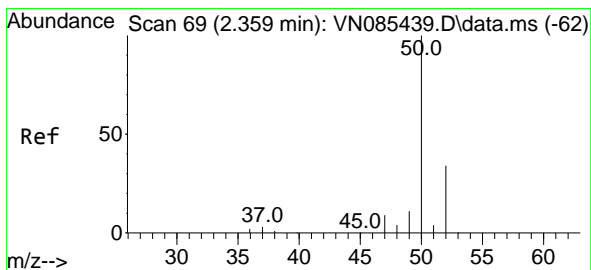
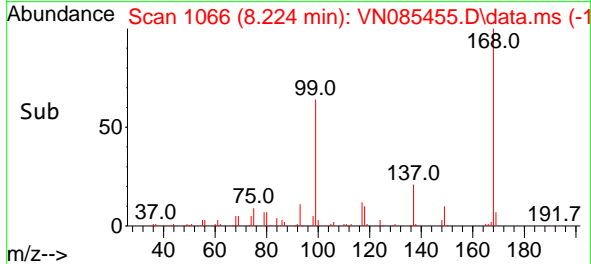
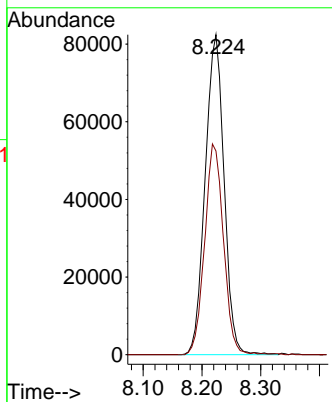
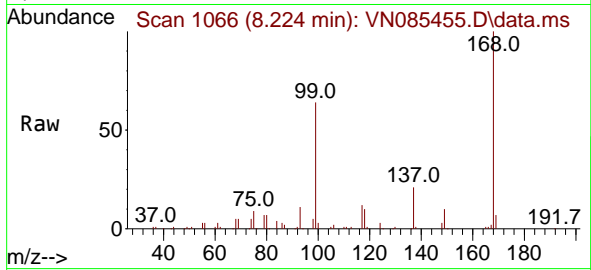




#1  
 Pentafluorobenzene  
 Concen: 50.000 ug/l  
 RT: 8.224 min Scan# 1066  
 Delta R.T. 0.006 min  
 Lab File: VN085455.D  
 Acq: 15 Jan 2025 12:37

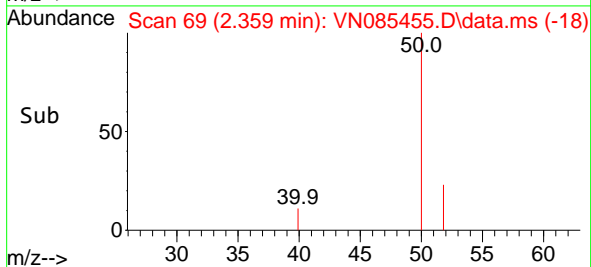
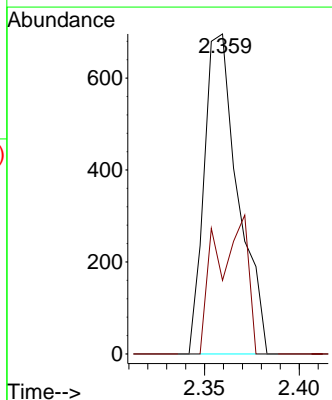
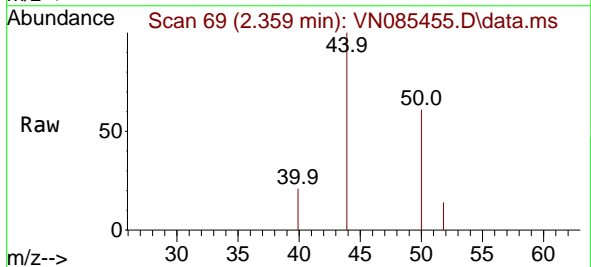
Instrument : MSVOA\_N  
 ClientSampleId : VPB190A-HYD-20250107

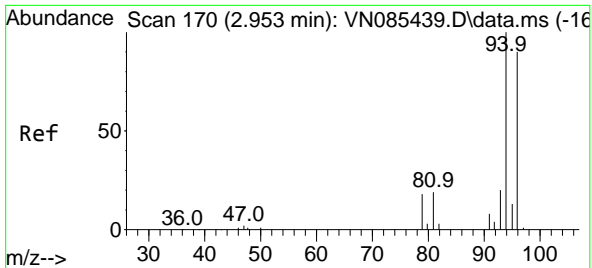
Tgt Ion:168 Resp: 183777  
 Ion Ratio Lower Upper  
 168 100  
 99 63.6 53.6 80.4



#3  
 Chloromethane  
 Concen: 0.321 ug/l  
 RT: 2.359 min Scan# 69  
 Delta R.T. 0.000 min  
 Lab File: VN085455.D  
 Acq: 15 Jan 2025 12:37

Tgt Ion: 50 Resp: 865  
 Ion Ratio Lower Upper  
 50 100  
 52 23.0 27.0 40.6#

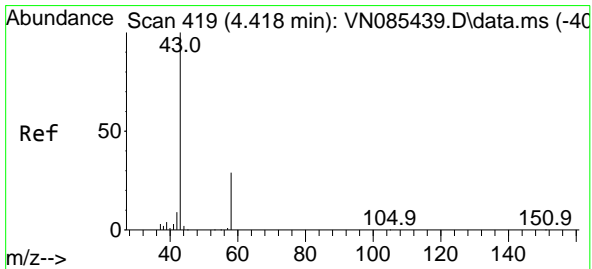
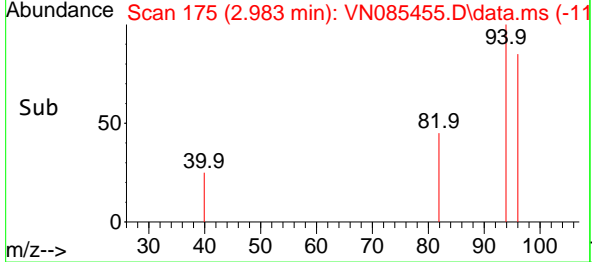
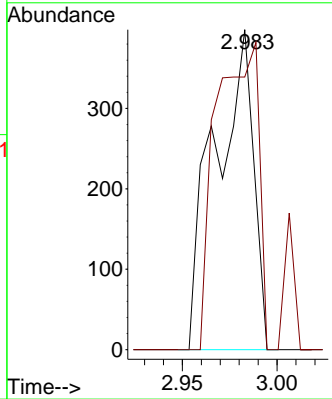
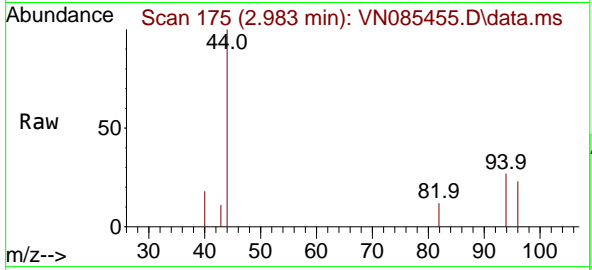




#5  
 Bromomethane  
 Concen: 0.344 ug/l  
 RT: 2.983 min Scan# 11  
 Delta R.T. 0.029 min  
 Lab File: VN085455.D  
 Acq: 15 Jan 2025 12:37

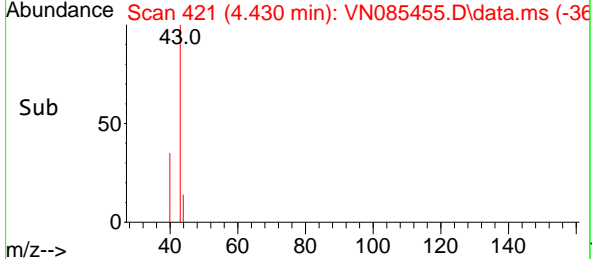
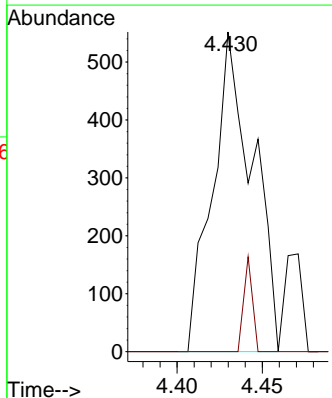
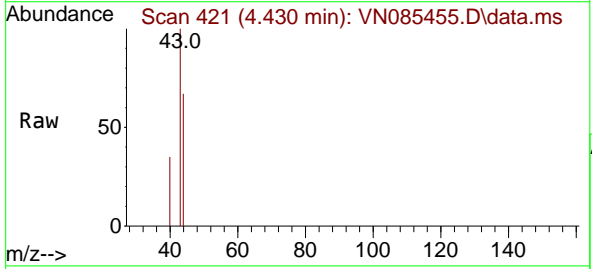
Instrument : MSVOA\_N  
 ClientSampleId : VPB190A-HYD-20250107

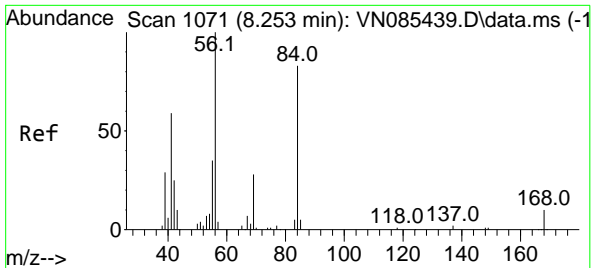
Tgt Ion: 94 Resp: 562  
 Ion Ratio Lower Upper  
 94 100  
 96 85.2 71.8 107.6



#16  
 Acetone  
 Concen: 0.948 ug/l  
 RT: 4.430 min Scan# 421  
 Delta R.T. 0.012 min  
 Lab File: VN085455.D  
 Acq: 15 Jan 2025 12:37

Tgt Ion: 43 Resp: 909  
 Ion Ratio Lower Upper  
 43 100  
 58 0.0 23.8 35.6#



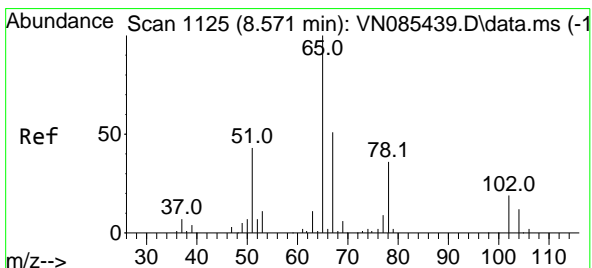
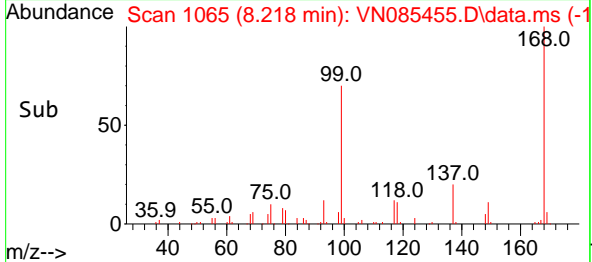
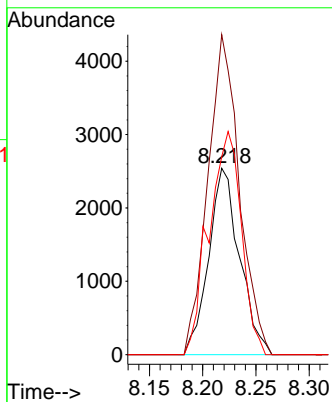
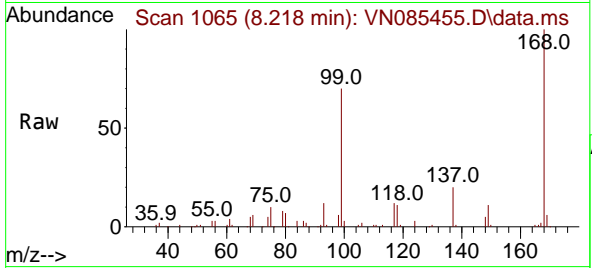


#31  
 Cyclohexane  
 Concen: 1.362 ug/l  
 RT: 8.218 min Scan# 1065  
 Delta R.T. -0.035 min  
 Lab File: VN085455.D  
 Acq: 15 Jan 2025 12:37

Instrument : MSVOA\_N  
 ClientSampleId : VPB190A-HYD-20250107

Tgt Ion: 56 Resp: 5129

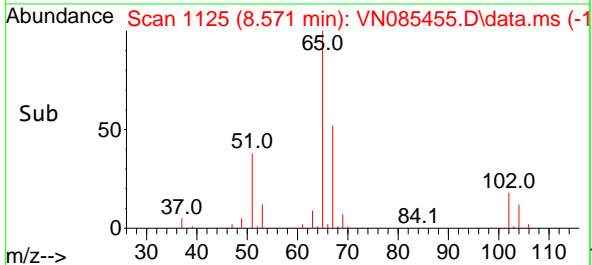
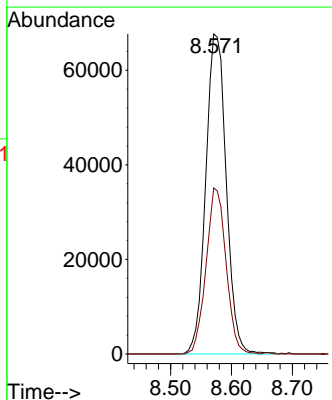
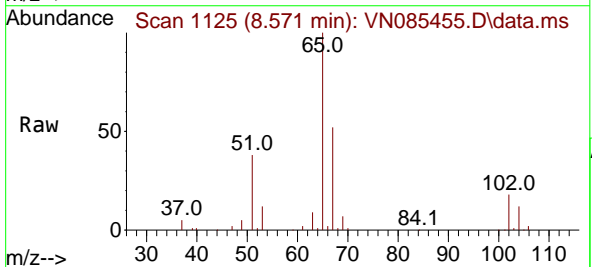
Ion	Ratio	Lower	Upper
56	100		
69	171.7	22.2	33.4#
84	106.2	66.4	99.6#

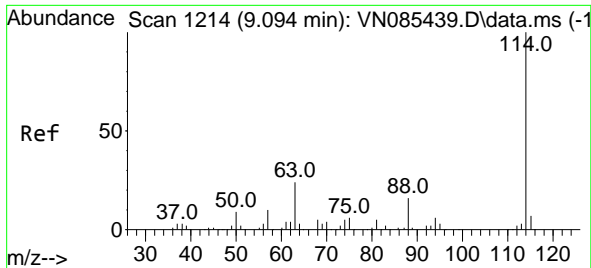


#33  
 1,2-Dichloroethane-d4  
 Concen: 53.232 ug/l  
 RT: 8.571 min Scan# 1125  
 Delta R.T. 0.000 min  
 Lab File: VN085455.D  
 Acq: 15 Jan 2025 12:37

Tgt Ion: 65 Resp: 157915

Ion	Ratio	Lower	Upper
65	100		
67	50.5	0.0	101.6

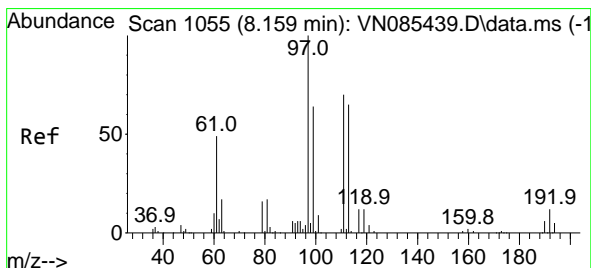
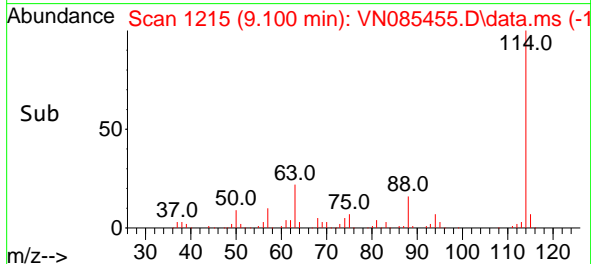
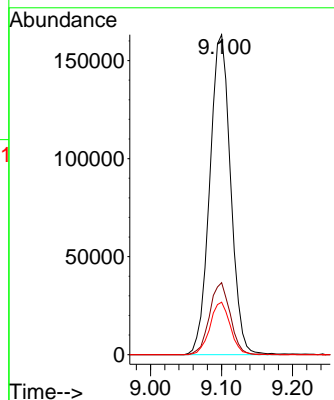
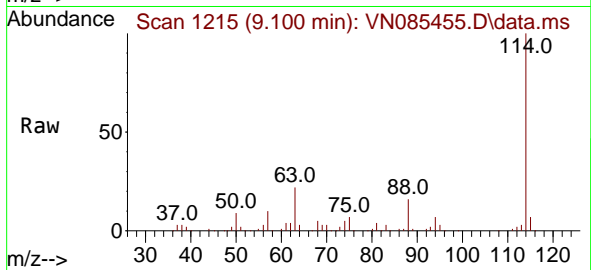




#34  
 1,4-Difluorobenzene  
 Concen: 50.000 ug/l  
 RT: 9.100 min Scan# 11  
 Delta R.T. 0.006 min  
 Lab File: VN085455.D  
 Acq: 15 Jan 2025 12:37

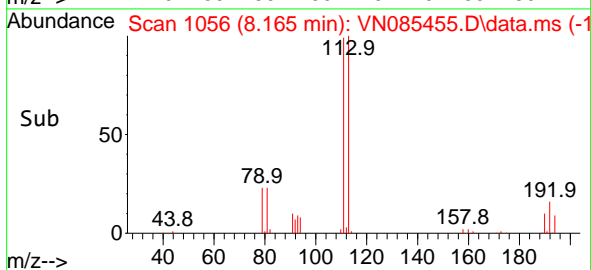
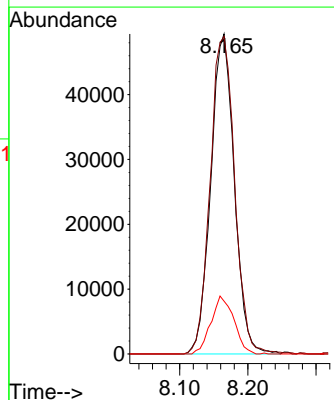
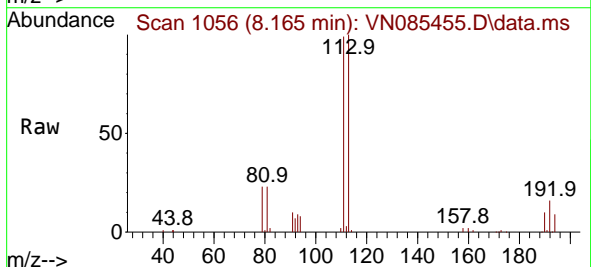
Instrument : MSVOA\_N  
 ClientSampleId : VPB190A-HYD-20250107

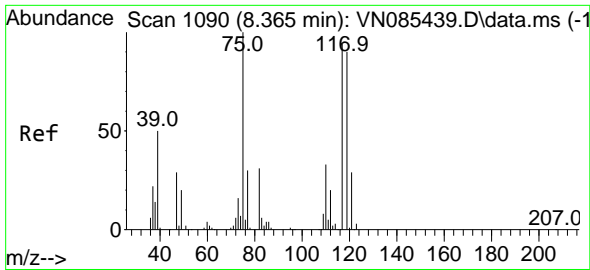
Tgt Ion:114 Resp: 332391  
 Ion Ratio Lower Upper  
 114 100  
 63 22.5 0.0 47.6  
 88 16.4 0.0 32.6



#35  
 Dibromofluoromethane  
 Concen: 51.385 ug/l  
 RT: 8.165 min Scan# 1056  
 Delta R.T. 0.006 min  
 Lab File: VN085455.D  
 Acq: 15 Jan 2025 12:37

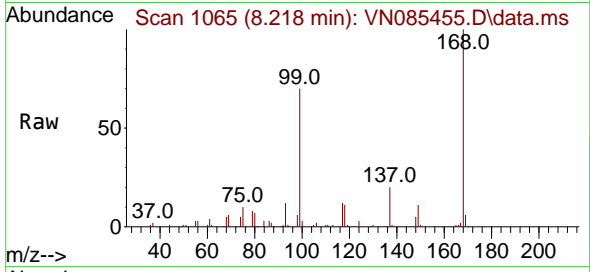
Tgt Ion:113 Resp: 118493  
 Ion Ratio Lower Upper  
 113 100  
 111 103.5 82.7 124.1  
 192 17.6 14.3 21.5



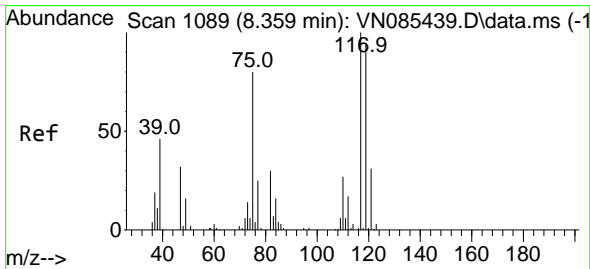
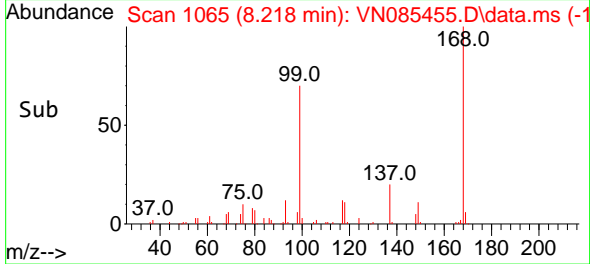
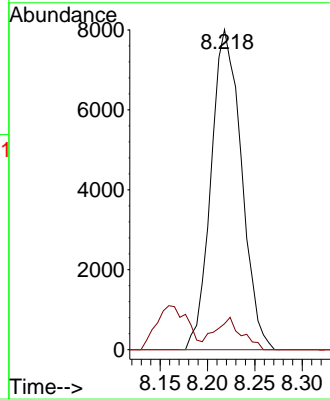


#36  
 1,1-Dichloropropene  
 Concen: 5.536 ug/l  
 RT: 8.218 min Scan# 1065  
 Delta R.T. -0.147 min  
 Lab File: VN085455.D  
 Acq: 15 Jan 2025 12:37

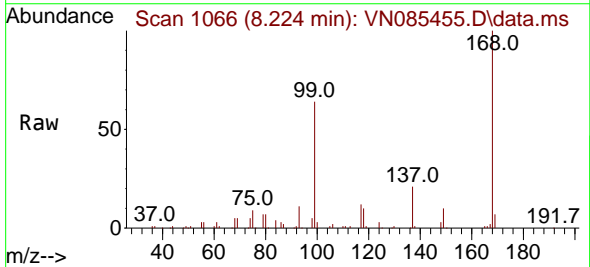
Instrument : MSVOA\_N  
 ClientSampleId : VPB190A-HYD-20250107



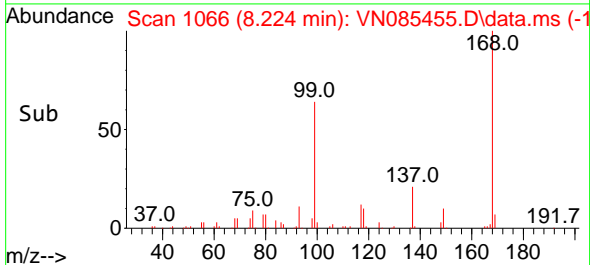
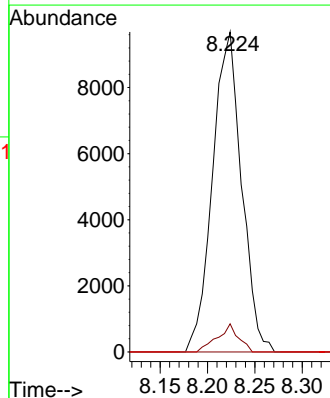
Tgt Ion	Resp	Lower	Upper
75	17916		
75	100		
110	8.7	16.5	49.5#
77	0.0	24.4	36.6#

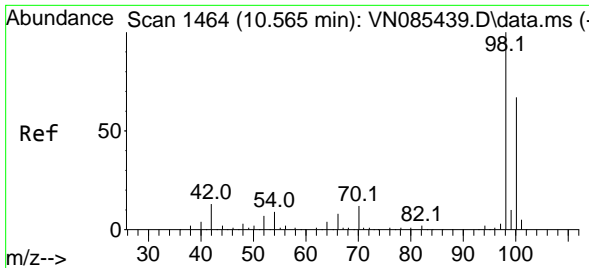


#38  
 Carbon Tetrachloride  
 Concen: 5.574 ug/l  
 RT: 8.224 min Scan# 1066  
 Delta R.T. -0.135 min  
 Lab File: VN085455.D  
 Acq: 15 Jan 2025 12:37



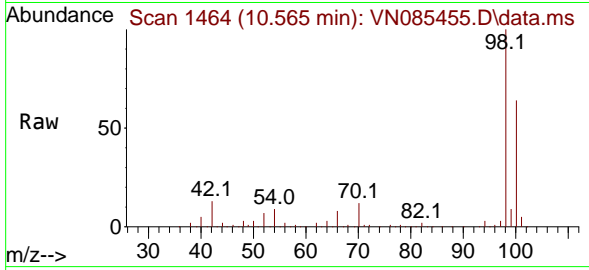
Tgt Ion	Resp	Lower	Upper
117	20653		
117	100		
119	8.8	75.4	113.2#
121	0.0	24.6	37.0#



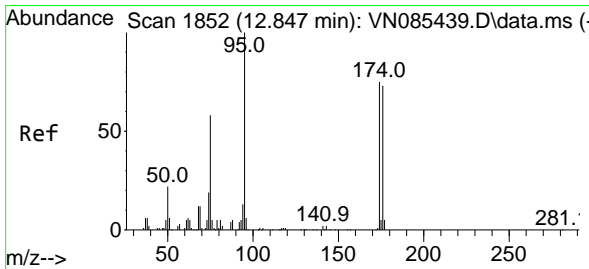
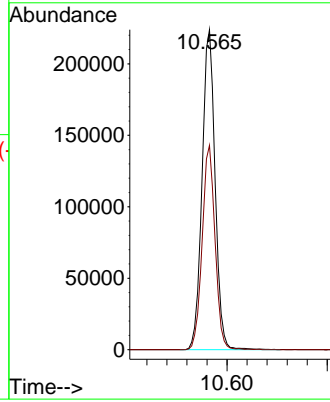
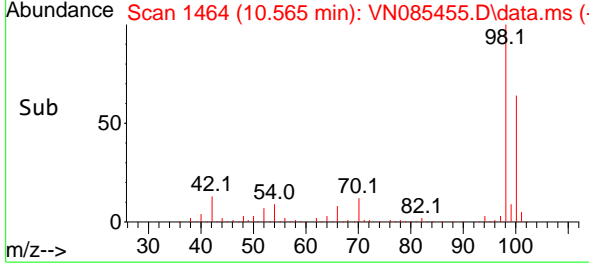


#50  
 Toluene-d8  
 Concen: 49.222 ug/l  
 RT: 10.565 min Scan# 1464  
 Delta R.T. 0.000 min  
 Lab File: VN085455.D  
 Acq: 15 Jan 2025 12:37

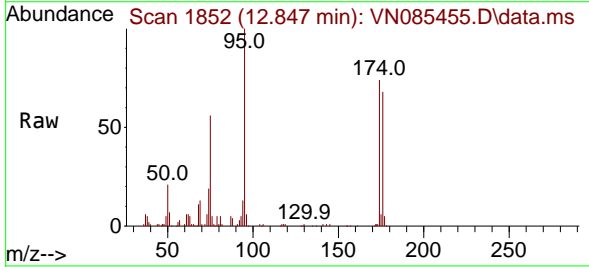
Instrument : MSVOA\_N  
 ClientSampleId : VPB190A-HYD-20250107



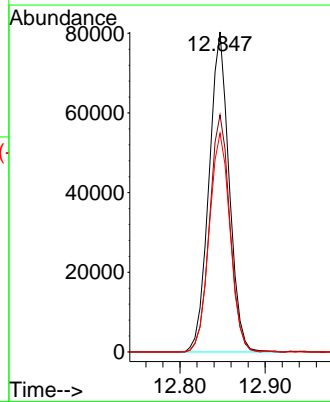
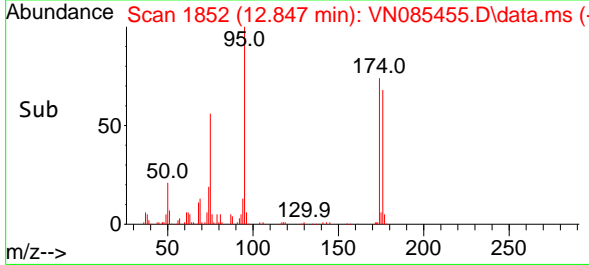
Tgt Ion: 98 Resp: 403278  
 Ion Ratio Lower Upper  
 98 100  
 100 63.1 52.2 78.4



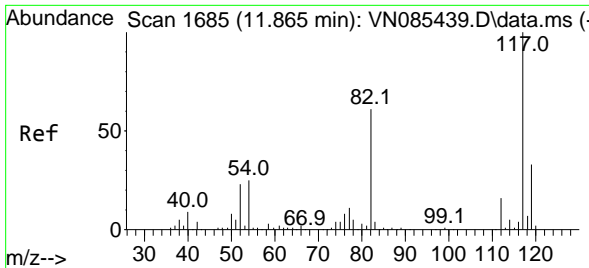
#62  
 4-Bromofluorobenzene  
 Concen: 47.051 ug/l  
 RT: 12.847 min Scan# 1852  
 Delta R.T. 0.000 min  
 Lab File: VN085455.D  
 Acq: 15 Jan 2025 12:37



Tgt Ion: 95 Resp: 131868  
 Ion Ratio Lower Upper  
 95 100  
 174 75.1 0.0 145.0  
 176 70.6 0.0 142.4





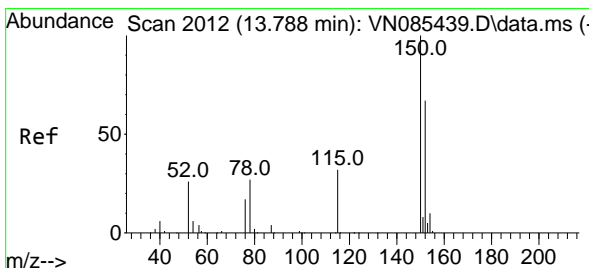
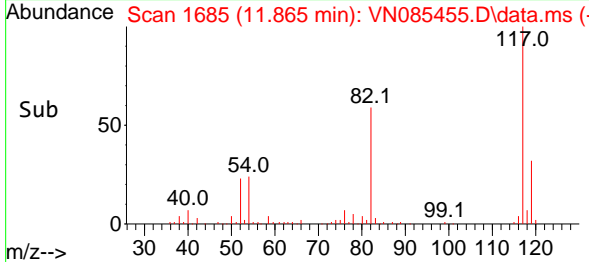
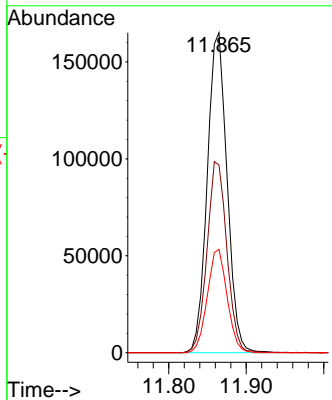
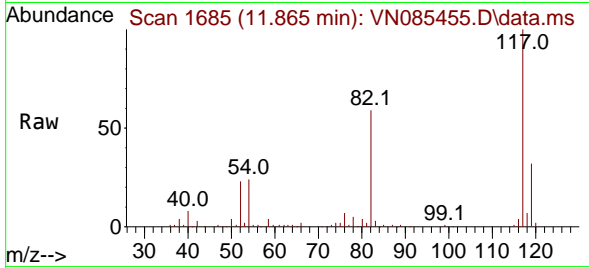


#63  
 Chlorobenzene-d5  
 Concen: 50.000 ug/l  
 RT: 11.865 min Scan# 1685  
 Delta R.T. 0.000 min  
 Lab File: VN085455.D  
 Acq: 15 Jan 2025 12:37

Instrument : MSVOA\_N  
 ClientSampleId : VPB190A-HYD-20250107

Tgt Ion:117 Resp: 293220

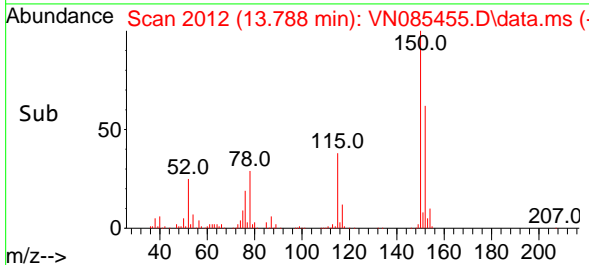
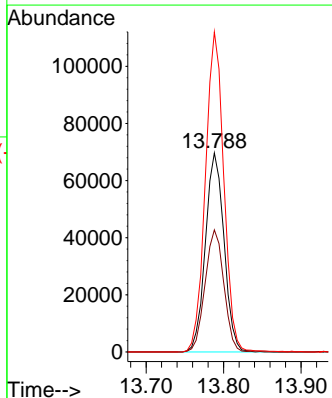
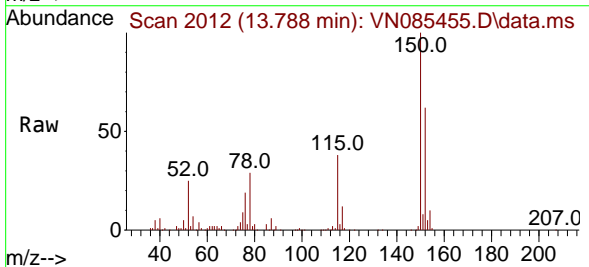
Ion	Ratio	Lower	Upper
117	100		
82	58.7	48.6	72.8
119	32.3	26.6	39.8

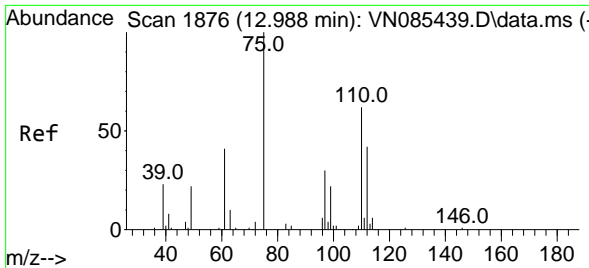


#72  
 1,4-Dichlorobenzene-d4  
 Concen: 50.000 ug/l  
 RT: 13.788 min Scan# 2012  
 Delta R.T. 0.000 min  
 Lab File: VN085455.D  
 Acq: 15 Jan 2025 12:37

Tgt Ion:152 Resp: 116419

Ion	Ratio	Lower	Upper
152	100		
115	61.9	31.1	93.3
150	158.7	0.0	343.6

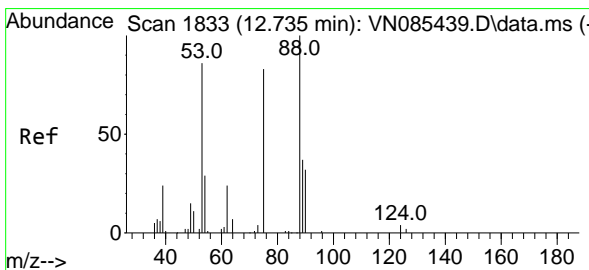
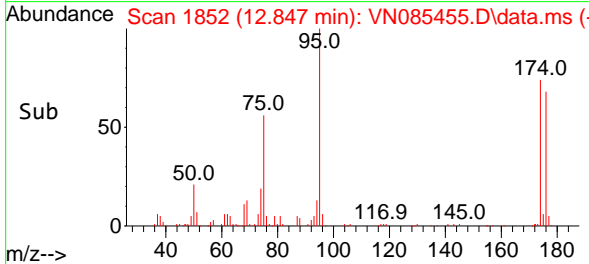
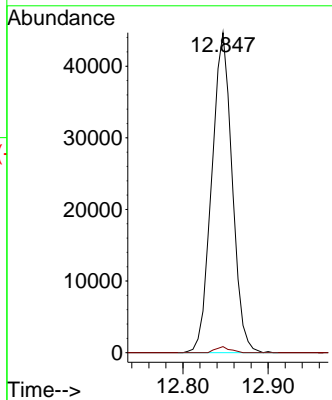
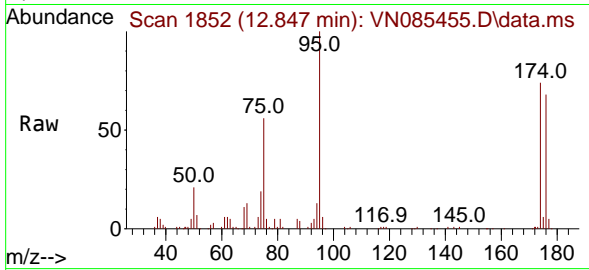




#76  
 1,2,3-Trichloropropane  
 Concen: 31.526 ug/l  
 RT: 12.847 min Scan# 1852  
 Delta R.T. -0.141 min  
 Lab File: VN085455.D  
 Acq: 15 Jan 2025 12:37

Instrument : MSVOA\_N  
 ClientSampleId : VPB190A-HYD-20250107

Tgt Ion: 75 Resp: 74599  
 Ion Ratio Lower Upper  
 75 100  
 77 1.3 109.7 329.2#



#81  
 trans-1,4-Dichloro-2-butene  
 Concen: 85.297 ug/l  
 RT: 12.847 min Scan# 1852  
 Delta R.T. 0.112 min  
 Lab File: VN085455.D  
 Acq: 15 Jan 2025 12:37

Tgt Ion: 75 Resp: 74599  
 Ion Ratio Lower Upper  
 75 100  
 53 0.0 95.6 143.4#  
 89 0.0 37.0 55.6#

