

Data Path : Z:\VOASRV\HPCHEM1\MSVOA\_N\DATA\VN011620\  
 Data File : VN059739.D  
 Acq On : 16 Jan 2020 18:02  
 Operator : JC/MD  
 Sample : PB126118ZHE#10  
 Misc : 5.00mL/MSVOA\_N/WATER  
 ALS Vial : 20 Sample Multiplier: 1

Instrument :  
 MSVOA\_N  
 ClientSampleId :  
 PB126118ZHE#10

Quant Time: Jan 17 04:38:58 2020  
 Quant Method : Z:\VOASRV\HPCHEM1\MSVOA\_N\METHODS\82N011320W.M  
 Quant Title : SW846 8260  
 QLast Update : Tue Jan 14 08:58:21 2020  
 Response via : Initial Calibration

Internal Standards	R.T.	QIon	Response	Conc	Units	Dev(Min)
1) Pentafluorobenzene	7.64	168	192145	50.00	ug/l	0.00
34) 1,4-Difluorobenzene	8.57	114	286036	50.00	ug/l	0.00
63) Chlorobenzene-d5	11.40	117	248610	50.00	ug/l	0.00
72) 1,4-Dichlorobenzene-d4	13.34	152	105101	50.00	ug/l	0.00

System Monitoring Compounds	R.T.	QIon	Response	Conc	Units	Dev(Min)
33) 1,2-Dichloroethane-d4	8.00	65	98583	46.20	ug/l	0.00
Spiked Amount				50.000		
			Recovery	=	92.40%	
35) Dibromofluoromethane	7.57	113	87702	51.42	ug/l	0.00
Spiked Amount				50.000		
			Recovery	=	102.84%	
50) Toluene-d8	10.08	98	327246	49.52	ug/l	0.00
Spiked Amount				50.000		
			Recovery	=	99.04%	
62) 4-Bromofluorobenzene	12.40	95	111114	46.64	ug/l	0.00
Spiked Amount				50.000		
			Recovery	=	93.28%	

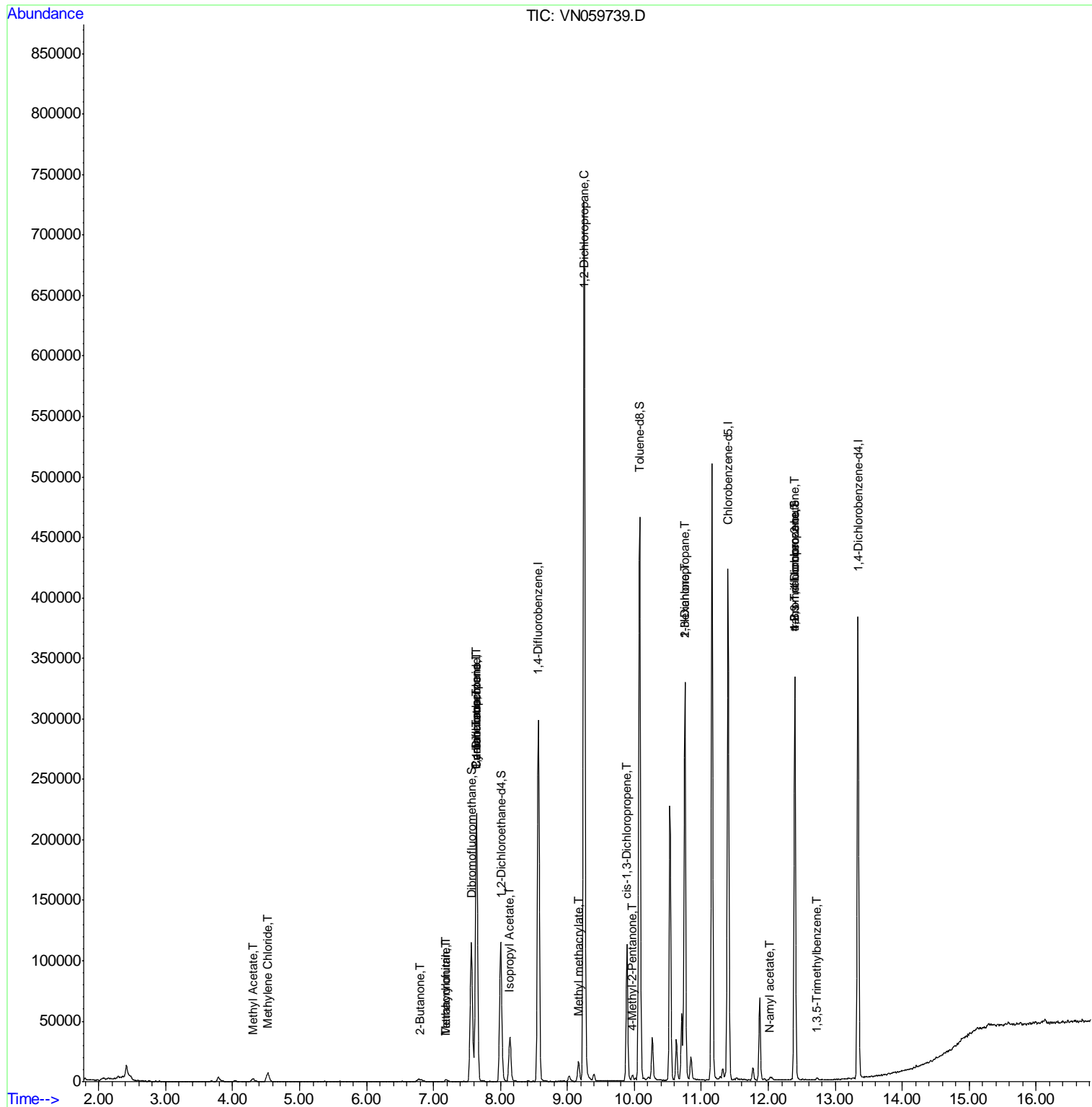
Target Compounds	R.T.	QIon	Response	Conc	Units	Qvalue
16) Acetone	3.79	43	6329	Below Cal		95
18) Methyl Acetate	4.30	43	5036	2.021	ug/l	95
20) Methylene Chloride	4.53	84	5822	1.767	ug/l	85
25) 2-Butanone	6.80	43	702	0.581	ug/l #	50
29) Tetrahydrofuran	7.18	42	582	0.778	ug/l #	55
31) Cyclohexane	7.64	56	3586	1.136	ug/l #	2
36) 1,1-Dichloropropene	7.64	75	12634	5.072	ug/l #	50
38) Carbon Tetrachloride	7.64	117	17463	6.445	ug/l #	16
41) Methacrylonitrile	7.18	41	405	0.352	ug/l #	100
43) Isopropyl Acetate	8.14	43	43472	10.818	ug/l #	91
45) 1,2-Dichloropropane	9.25	63	812	0.442	ug/l #	44
48) Methyl methacrylate	9.16	41	2485	1.383	ug/l #	13
51) 4-Methyl-2-Pentanone	9.97	43	3440	1.481	ug/l	93
54) cis-1,3-Dichloropropene	9.89	75	21294	6.936	ug/l #	56
57) 1,3-Dichloropropane	10.75	76	3365	1.140	ug/l #	42
59) 2-Hexanone	10.75	43	45159	26.388	ug/l #	55
74) N-amyl acetate	12.02	43	1589	0.531	ug/l #	45
76) 1,2,3-Trichloropropane	12.40	75	55455	31.353	ug/l #	100
80) 1,3,5-Trimethylbenzene	12.73	105	1369	0.211	ug/l	96
81) trans-1,4-Dichloro-2-buten	12.40	75	55455	67.330	ug/l #	11
92) 1,2-Dibromo-3-Chloropropan	14.26	75	61	Below Cal	#	6

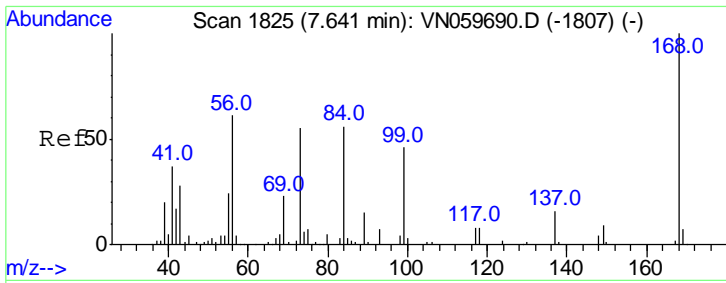
(#) = qualifier out of range (m) = manual integration (+) = signals summed

Data Path : Z:\VOASRV\HPCHEM1\MSVOA\_N\DATA\VN011620\  
 Data File : VN059739.D  
 Acq On : 16 Jan 2020 18:02  
 Operator : JC/MD  
 Sample : PB126118ZHE#10  
 Misc : 5.00mL/MSVOA\_N/WATER  
 ALS Vial : 20 Sample Multiplier: 1

Instrument :  
 MSVOA\_N  
 Client Sample Id :  
 PB126118ZHE#10

Quant Time: Jan 17 04:38:58 2020  
 Quant Method : Z:\VOASRV\HPCHEM1\MSVOA\_N\METHODS\82N011320W.M  
 Quant Title : SW846 8260  
 QLast Update : Tue Jan 14 08:58:21 2020  
 Response via : Initial Calibration

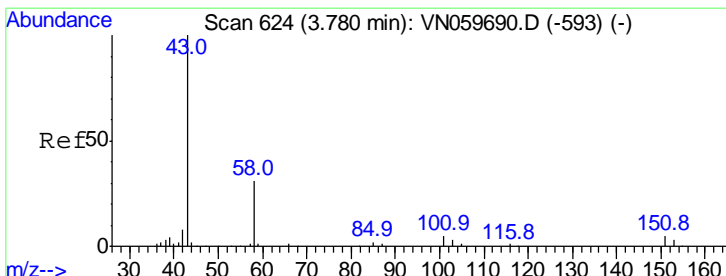
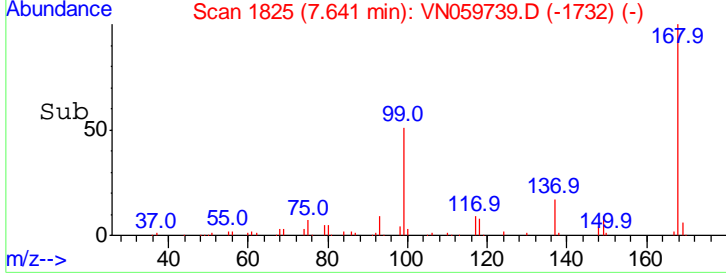
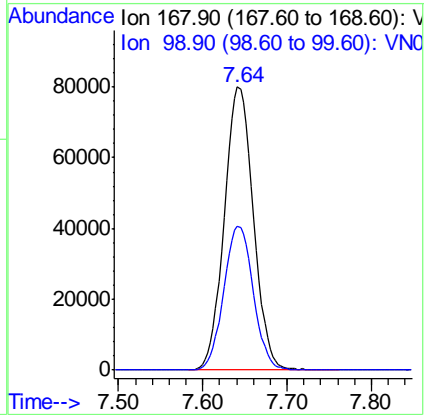
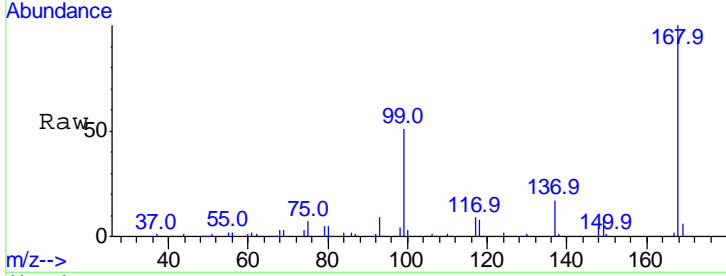




#1  
 Pentafluorobenzene  
 Concen: 50.000 ug/l  
 RT: 7.64 min Scan# 1825  
 Delta R.T. 0.00 min  
 Lab File: VN059739.D  
 Acq: 16 Jan 2020 18:02

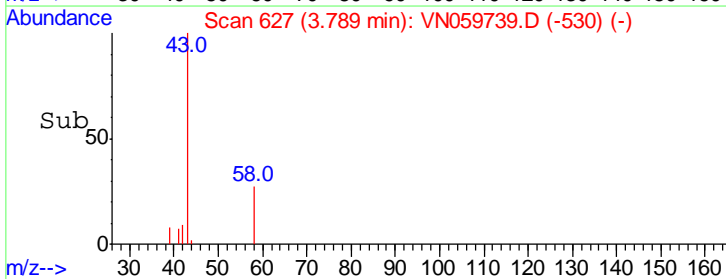
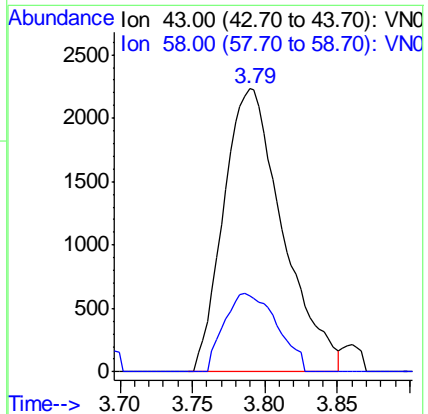
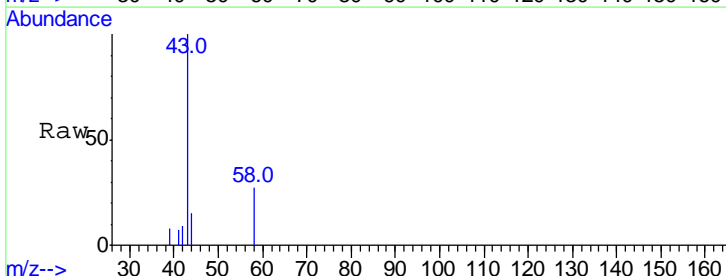
Instrument : MSVOA\_N  
 ClientSampled : PB126118ZHE#10

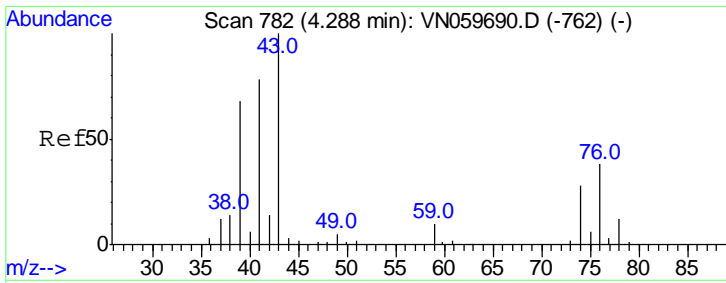
Tgt Ion: 168 Resp: 192145  
 Ion Ratio Lower Upper  
 168 100  
 99 50.9 48.2 72.4



#16  
 Acetone  
 Concen: Below Cal  
 RT: 3.79 min Scan# 627  
 Delta R.T. 0.01 min  
 Lab File: VN059739.D  
 Acq: 16 Jan 2020 18:02

Tgt Ion: 43 Resp: 6329  
 Ion Ratio Lower Upper  
 43 100  
 58 26.9 23.6 35.4

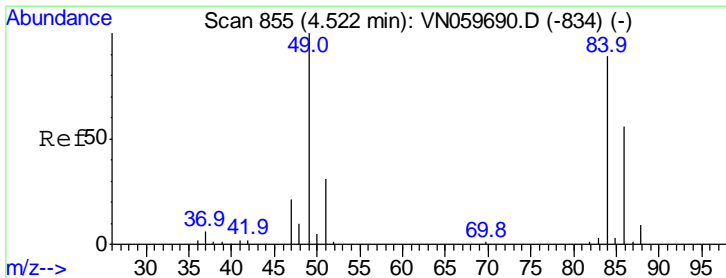
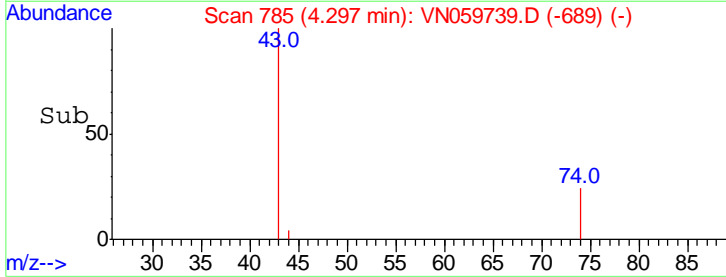
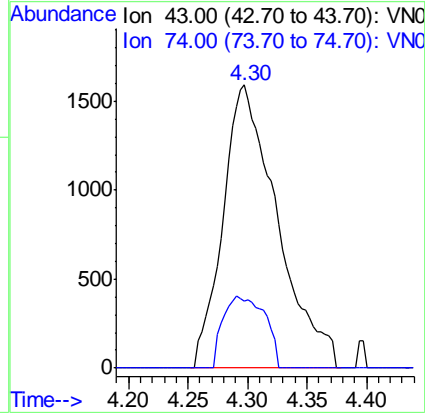
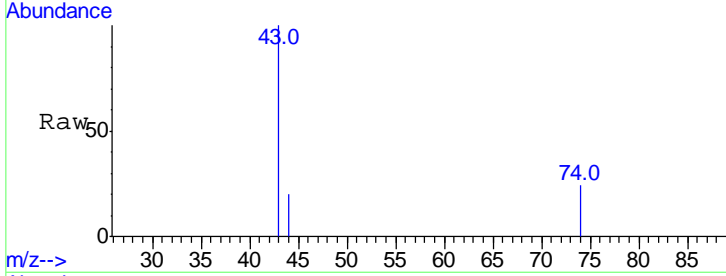




#18  
Methyl Acetate  
Concen: 2.021 ug/l  
RT: 4.30 min Scan# 785  
Delta R.T. 0.01 min  
Lab File: VN059739.D  
Acq: 16 Jan 2020 18:02

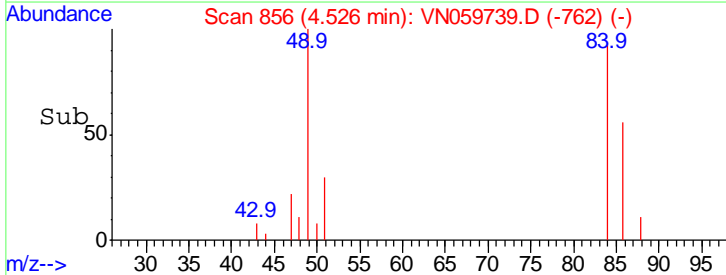
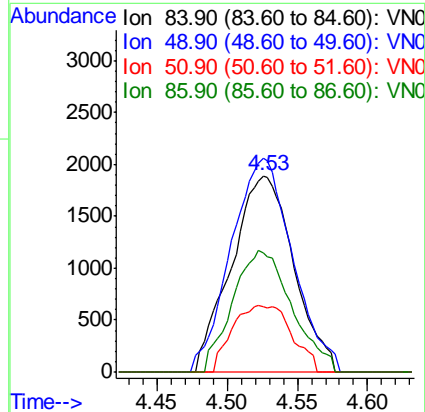
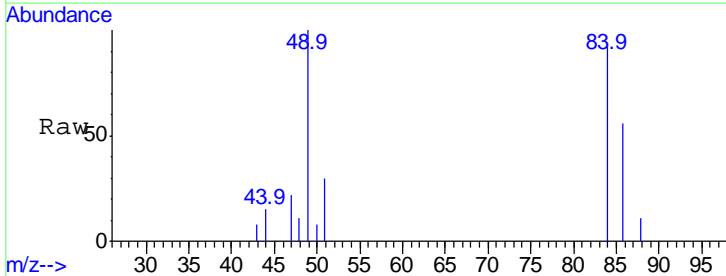
Instrument :  
MSVOA\_N  
ClientSampled :  
PB126118ZHE#10

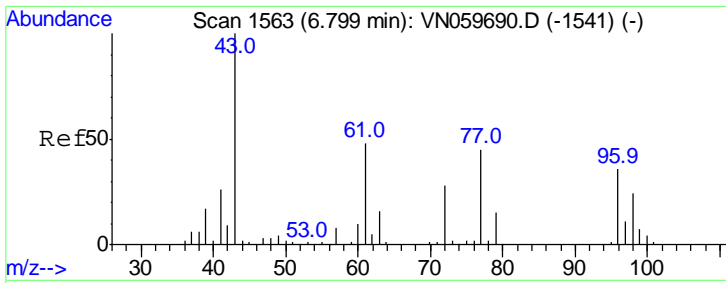
Tgt Ion: 43 Resp: 5036  
Ion Ratio Lower Upper  
43 100  
74 19.5 17.5 26.3



#20  
Methylene Chloride  
Concen: 1.767 ug/l  
RT: 4.53 min Scan# 856  
Delta R.T. 0.00 min  
Lab File: VN059739.D  
Acq: 16 Jan 2020 18:02

Tgt Ion: 84 Resp: 5822  
Ion Ratio Lower Upper  
84 100  
49 108.8 106.6 160.0  
51 32.9 31.9 47.9  
86 60.8 50.8 76.2



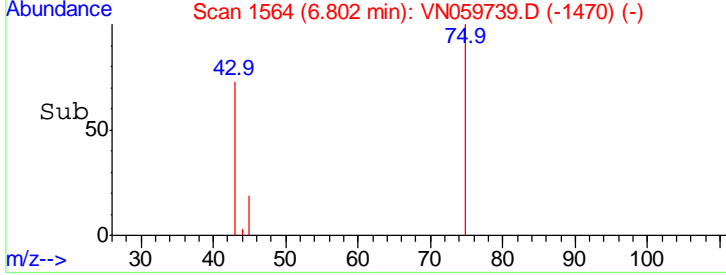
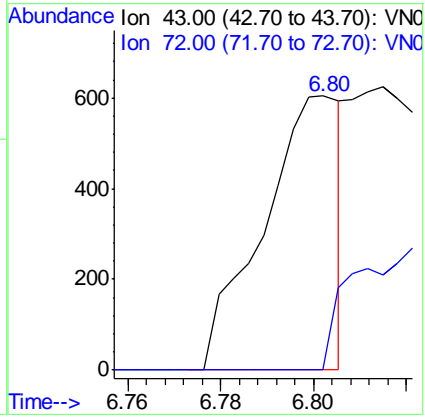
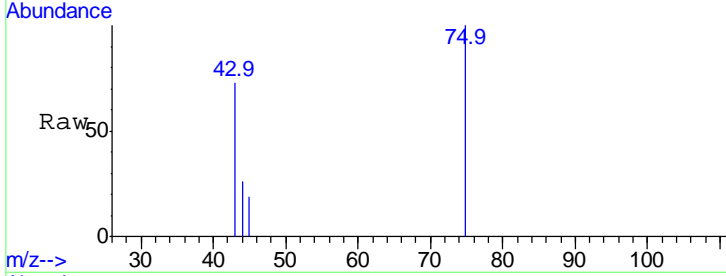


#25  
 2-Butanone  
 Concen: 0.581 ug/l  
 RT: 6.80 min Scan# 1564  
 Delta R.T. 0.00 min  
 Lab File: VN059739.D  
 Acq: 16 Jan 2020 18:02

Instrument : MSVOA\_N  
 ClientSampled : PB126118ZHE#10

Tgt Ion: 43 Resp: 702

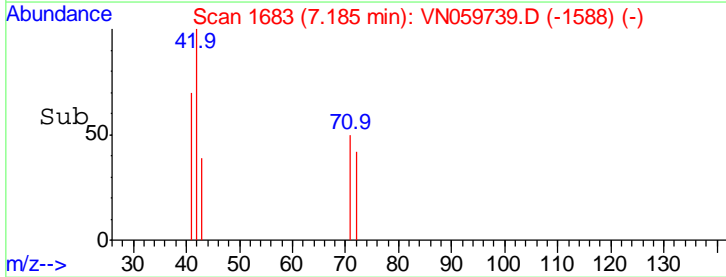
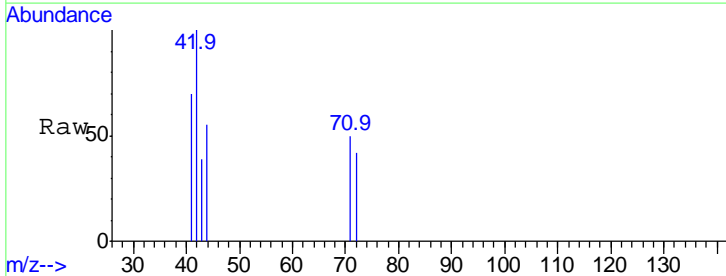
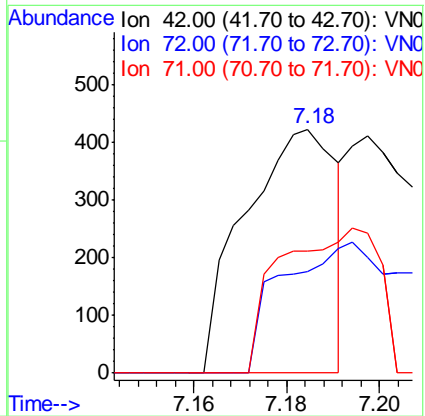
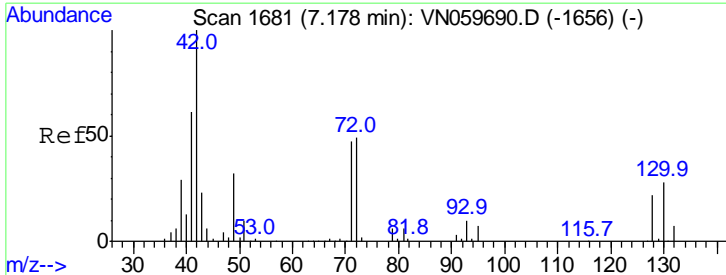
Ion	Ratio	Lower	Upper
43	100		
72	0.0	19.9	29.9#

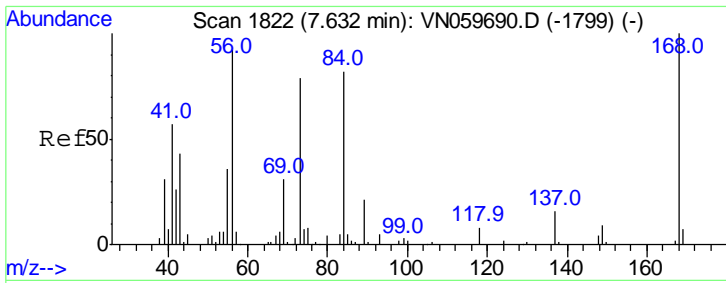


#29  
 Tetrahydrofuran  
 Concen: 0.778 ug/l  
 RT: 7.18 min Scan# 1683  
 Delta R.T. 0.01 min  
 Lab File: VN059739.D  
 Acq: 16 Jan 2020 18:02

Tgt Ion: 42 Resp: 582

Ion	Ratio	Lower	Upper
42	100		
72	72.5	33.1	49.7#
71	63.6	31.4	47.0#

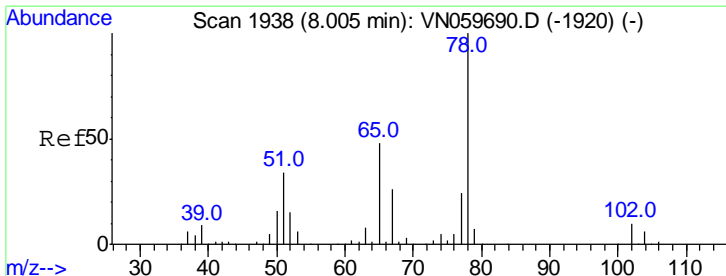
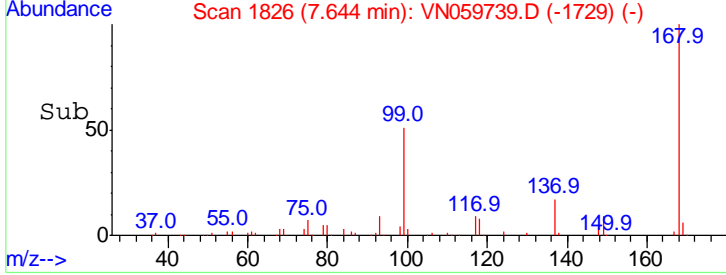
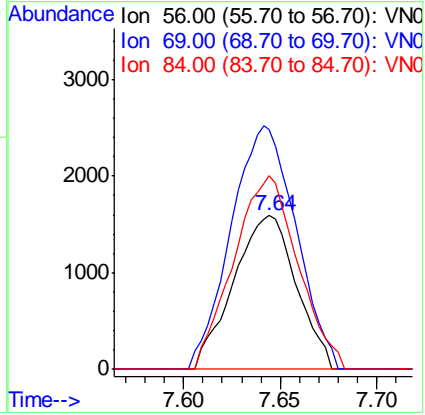
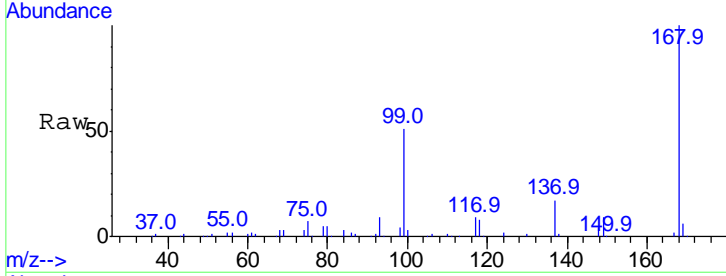




#31  
 Cyclohexane  
 Concen: 1.136 ug/l  
 RT: 7.64 min Scan# 1826  
 Delta R.T. 0.01 min  
 Lab File: VN059739.D  
 Acq: 16 Jan 2020 18:02

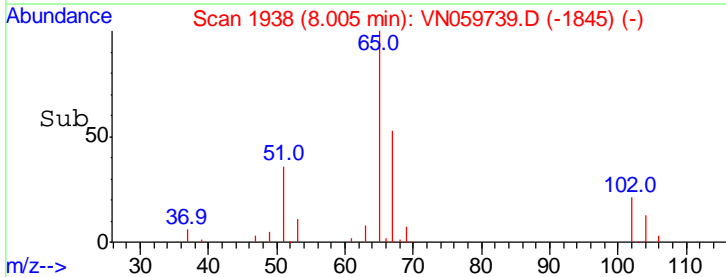
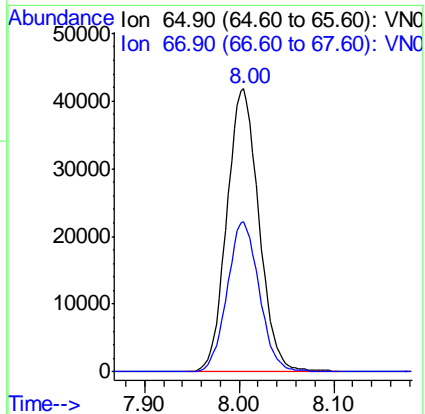
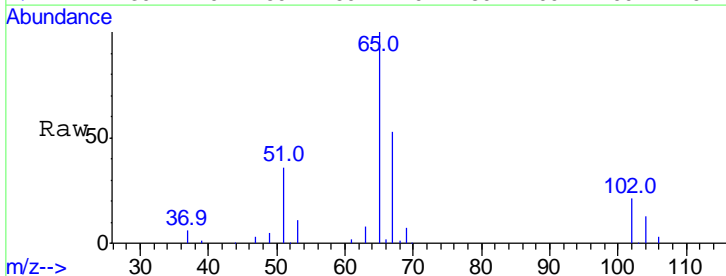
Instrument :  
 MSVOA\_N  
 ClientSampled :  
 PB126118ZHE#10

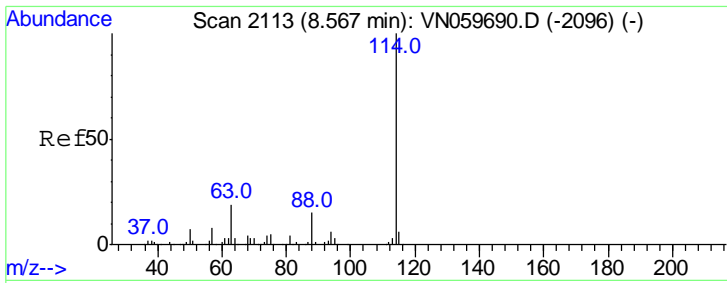
Tgt Ion	Resp	Lower	Upper
56	100		
69	156.2	26.5	39.7#
84	126.4	65.3	97.9#



#33  
 1,2-Dichloroethane-d4  
 Concen: 46.200 ug/l  
 RT: 8.00 min Scan# 1938  
 Delta R.T. 0.00 min  
 Lab File: VN059739.D  
 Acq: 16 Jan 2020 18:02

Tgt Ion	Resp	Lower	Upper
65	100		
67	52.9	0.0	103.0



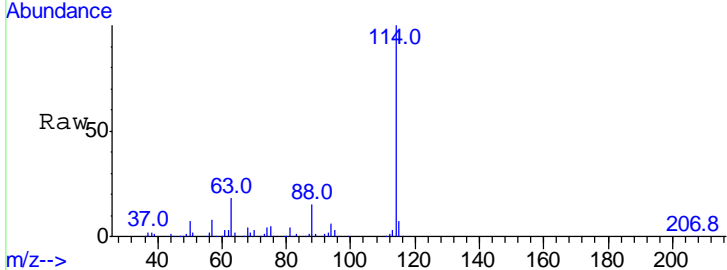


#34  
 1,4-Difluorobenzene  
 Concen: 50.000 ug/l  
 RT: 8.57 min Scan# 2113  
 Delta R.T. 0.00 min  
 Lab File: VN059739.D  
 Acq: 16 Jan 2020 18:02

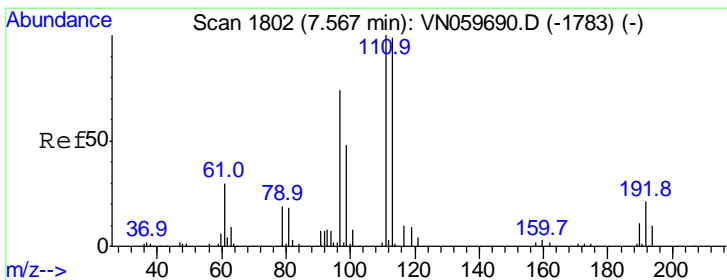
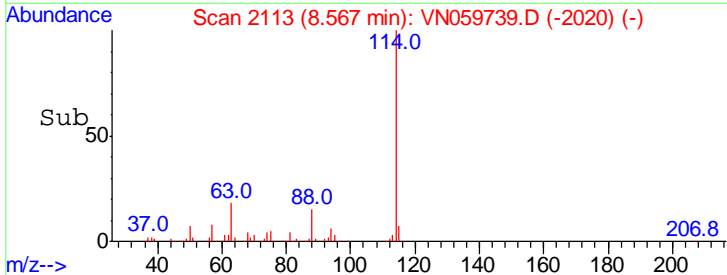
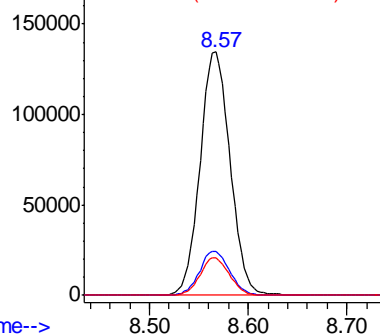
Instrument :  
 MSVOA\_N  
 ClientSampleId :  
 PB126118ZHE#10

Tgt Ion:114 Resp: 286036

Ion	Ratio	Lower	Upper
114	100		
63	18.1	0.0	43.6
88	15.3	0.0	31.4



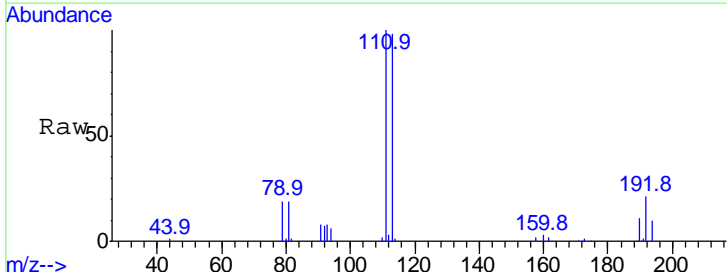
Abundance Ion 113.90 (113.60 to 114.60): V  
 Ion 63.00 (62.70 to 63.70): VN  
 Ion 87.90 (87.60 to 88.60): VN



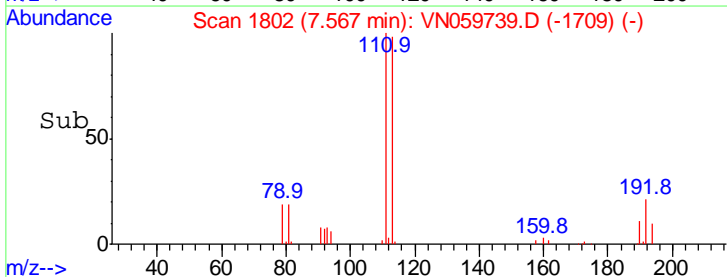
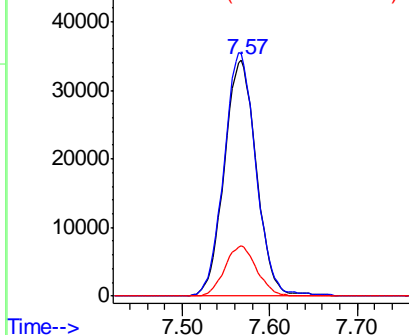
#35  
 Dibromofluoromethane  
 Concen: 51.415 ug/l  
 RT: 7.57 min Scan# 1802  
 Delta R.T. 0.00 min  
 Lab File: VN059739.D  
 Acq: 16 Jan 2020 18:02

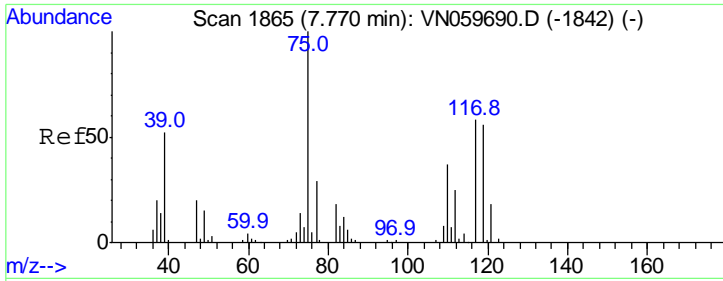
Tgt Ion:113 Resp: 87702

Ion	Ratio	Lower	Upper
113	100		
111	102.5	83.5	125.3
192	21.1	15.4	23.2



Abundance Ion 112.80 (112.50 to 113.50): V  
 Ion 110.80 (110.50 to 111.50): V  
 Ion 191.70 (191.40 to 192.40): V

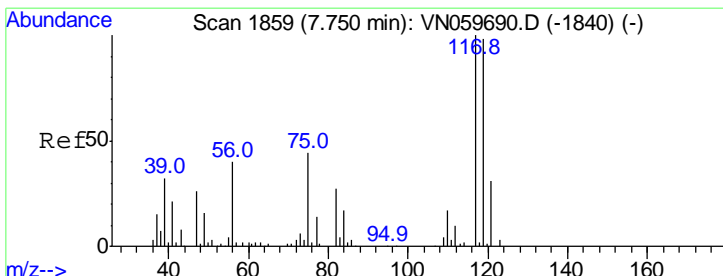
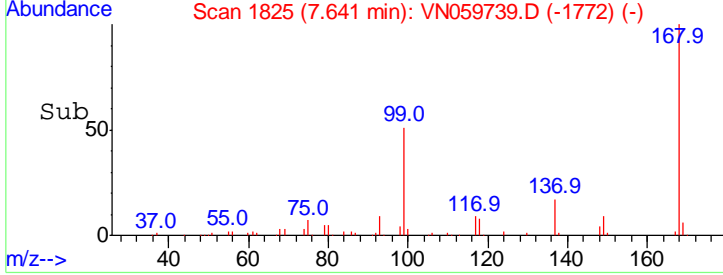
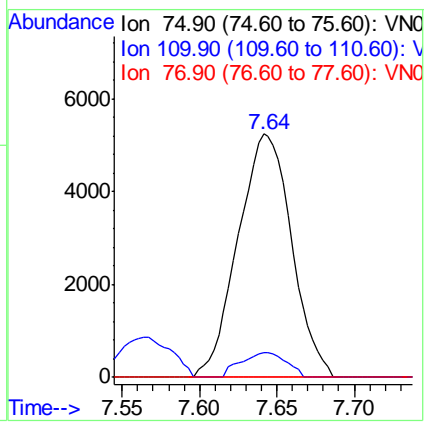
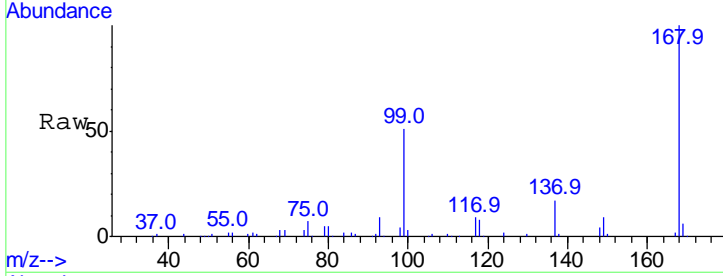




#36  
 1,1-Dichloropropene  
 Concen: 5.072 ug/l  
 RT: 7.64 min Scan# 1825  
 Delta R.T. -0.13 min  
 Lab File: VN059739.D  
 Acq: 16 Jan 2020 18:02

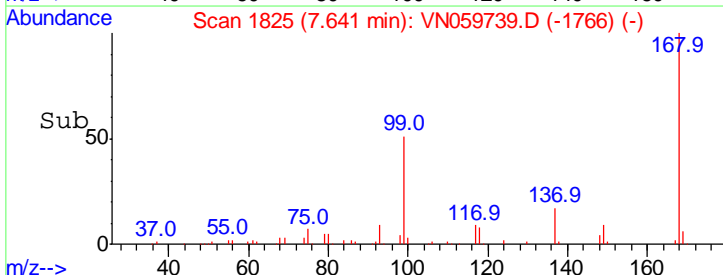
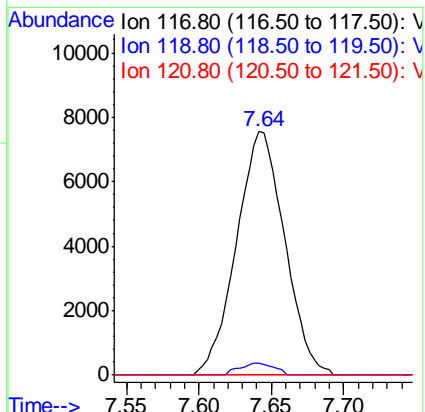
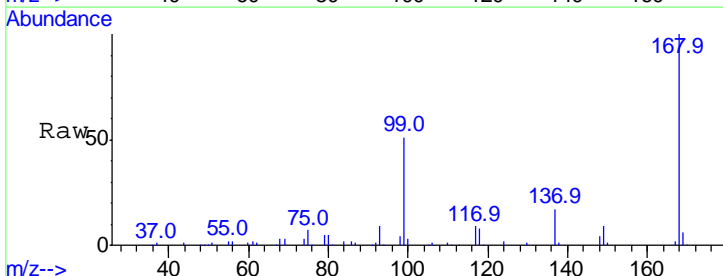
Instrument : MSVOA\_N  
 ClientSampled : PB126118ZHE#10

Tgt Ion	Resp	Lower	Upper
75	12634		
110	8.6	16.6	49.7#
77	0.0	25.1	37.7#

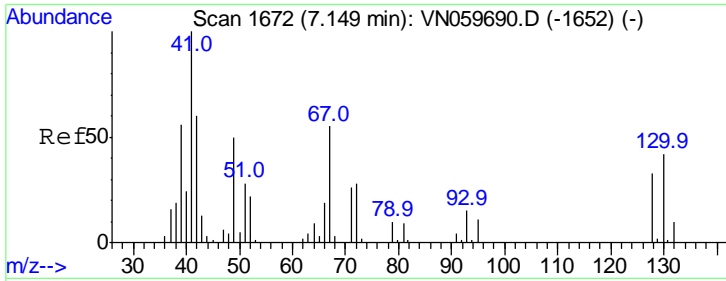


#38  
 Carbon Tetrachloride  
 Concen: 6.445 ug/l  
 RT: 7.64 min Scan# 1825  
 Delta R.T. -0.11 min  
 Lab File: VN059739.D  
 Acq: 16 Jan 2020 18:02

Tgt Ion	Resp	Lower	Upper
117	17463		
119	5.0	76.5	114.7#
121	0.0	25.1	37.7#





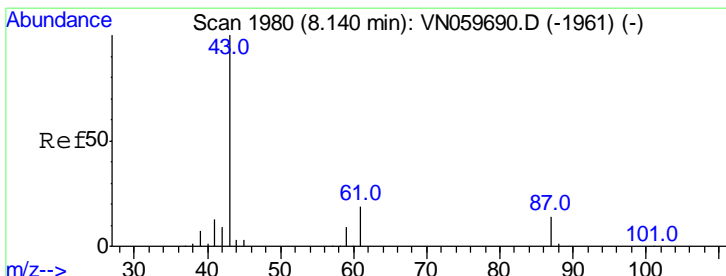
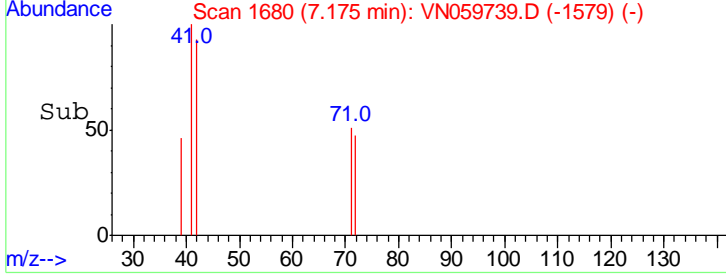
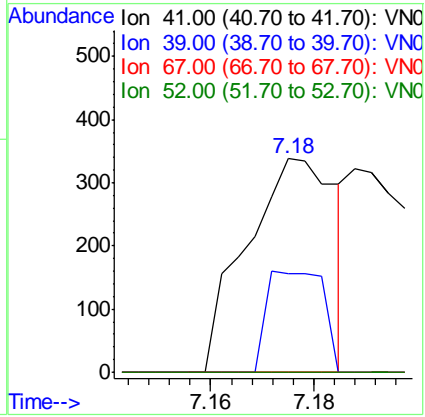
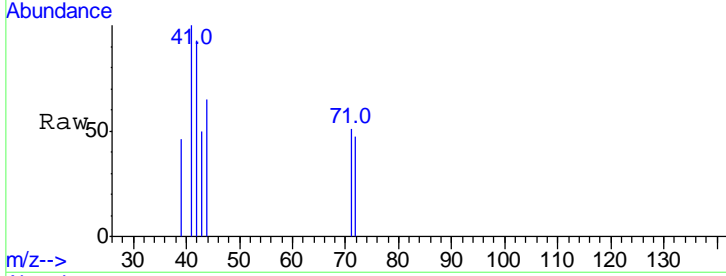


#41  
 Methacrylonitrile  
 Concen: 0.352 ug/l  
 RT: 7.18 min Scan# 1680  
 Delta R.T. 0.03 min  
 Lab File: VN059739.D  
 Acq: 16 Jan 2020 18:02

Instrument : MSVOA\_N  
 ClientSampleID : PB126118ZHE#10

Tgt Ion: 41 Resp: 405

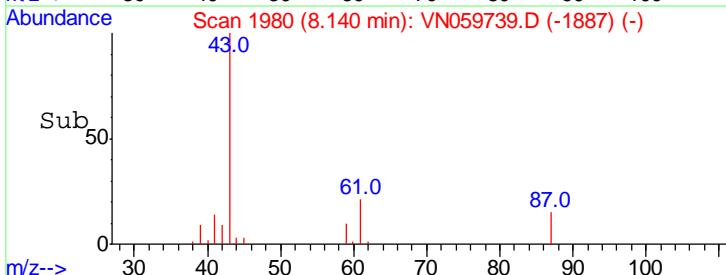
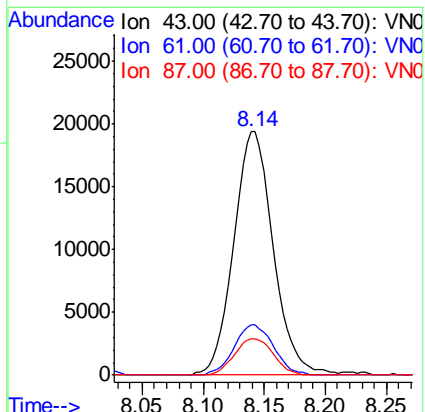
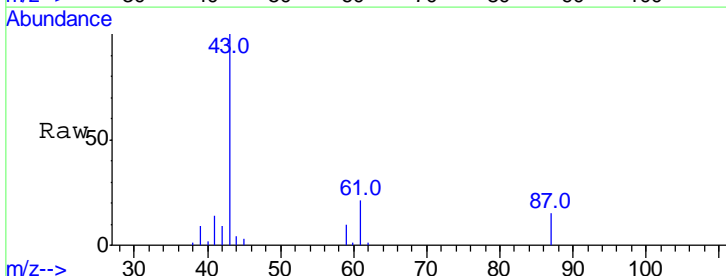
Ion	Ratio	Lower	Upper
41	100		
39	29.9	0.0	0.0#
67	0.0	0.0	0.0
52	0.0	0.0	0.0

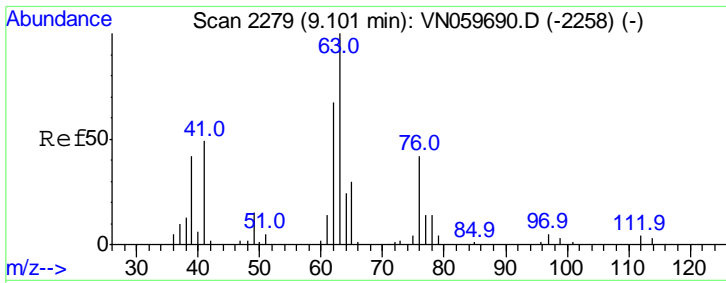


#43  
 Isopropyl Acetate  
 Concen: 10.818 ug/l  
 RT: 8.14 min Scan# 1980  
 Delta R.T. 0.00 min  
 Lab File: VN059739.D  
 Acq: 16 Jan 2020 18:02

Tgt Ion: 43 Resp: 43472

Ion	Ratio	Lower	Upper
43	100		
61	20.5	20.2	30.2
87	14.6	9.5	14.3#

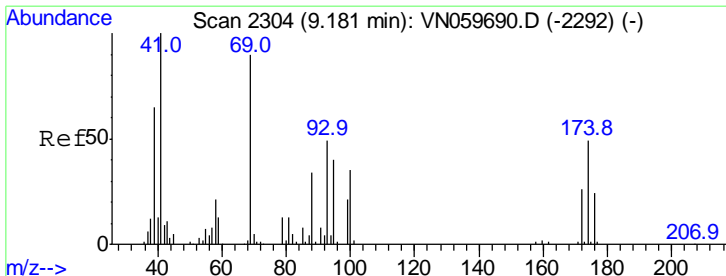
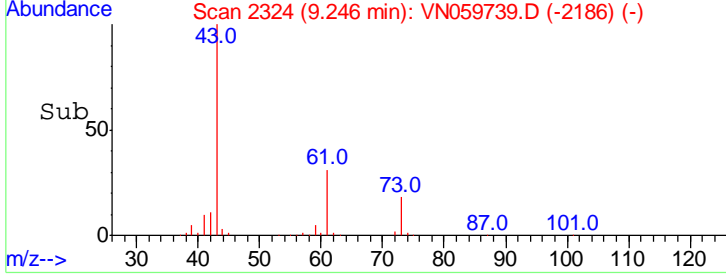
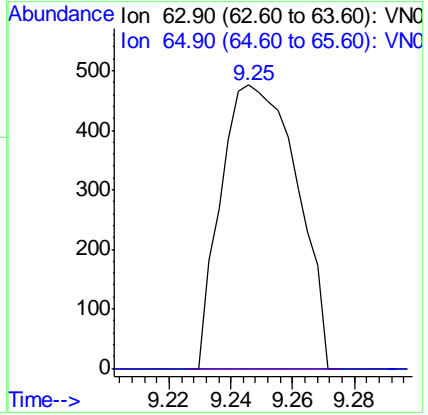
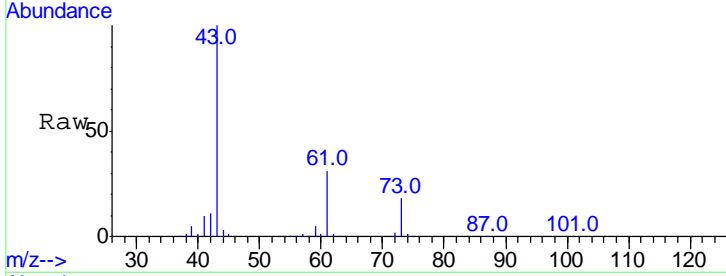




#45  
 1,2-Dichloropropane  
 Concen: 0.442 ug/l  
 RT: 9.25 min Scan# 2324  
 Delta R.T. 0.14 min  
 Lab File: VN059739.D  
 Acq: 16 Jan 2020 18:02

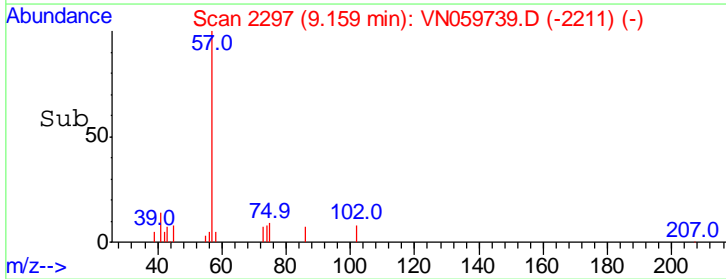
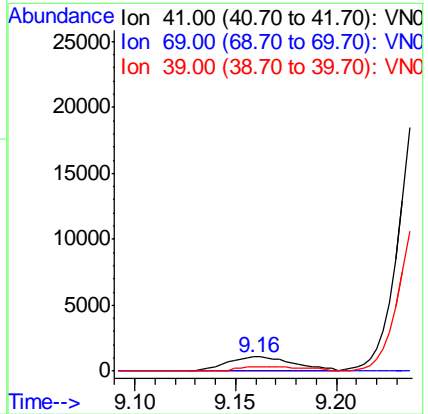
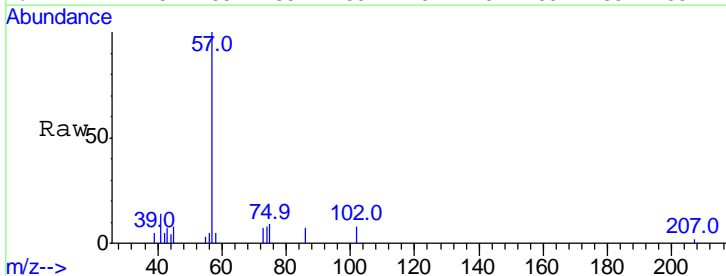
**Instrument :**  
 MSVOA\_N  
**ClientSampled :**  
 PB126118ZHE#10

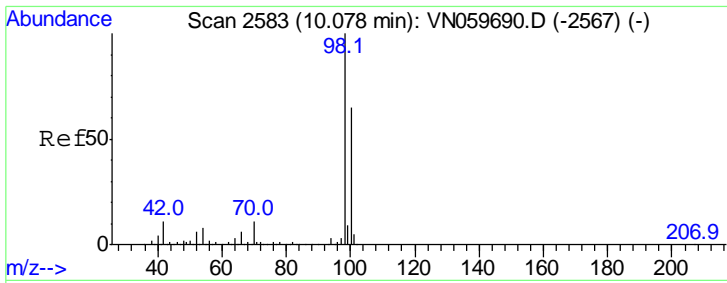
Tgt Ion: 63 Resp: 812  
 Ion Ratio Lower Upper  
 63 100  
 65 0.0 24.9 37.3#



#48  
 Methyl methacrylate  
 Concen: 1.383 ug/l  
 RT: 9.16 min Scan# 2297  
 Delta R.T. -0.02 min  
 Lab File: VN059739.D  
 Acq: 16 Jan 2020 18:02

Tgt Ion: 41 Resp: 2485  
 Ion Ratio Lower Upper  
 41 100  
 69 0.0 64.4 96.6#  
 39 0.0 51.3 76.9#

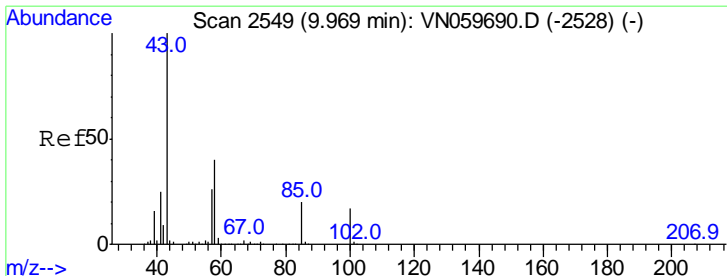
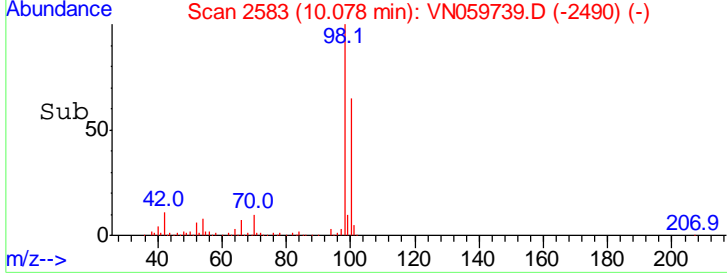
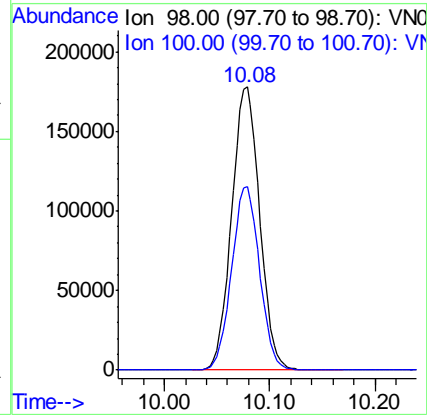
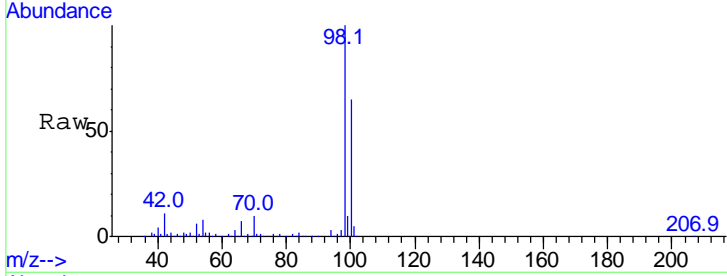




#50  
 Toluene-d8  
 Concen: 49.515 ug/l  
 RT: 10.08 min Scan# 2583  
 Delta R.T. 0.00 min  
 Lab File: VN059739.D  
 Acq: 16 Jan 2020 18:02

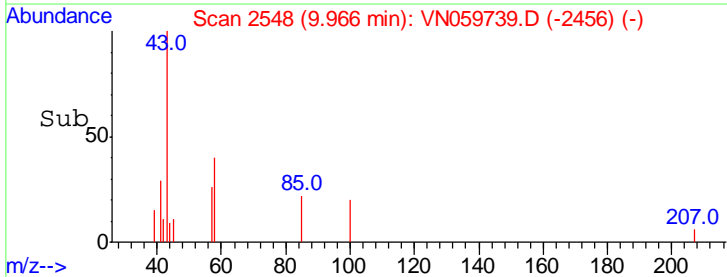
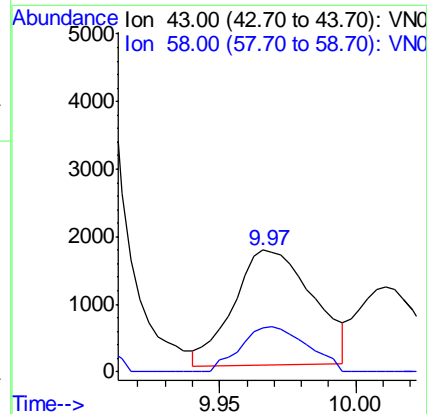
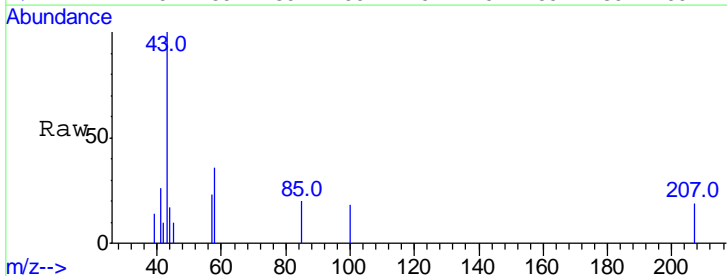
Instrument :  
 MSVOA\_N  
 ClientSampled :  
 PB126118ZHE#10

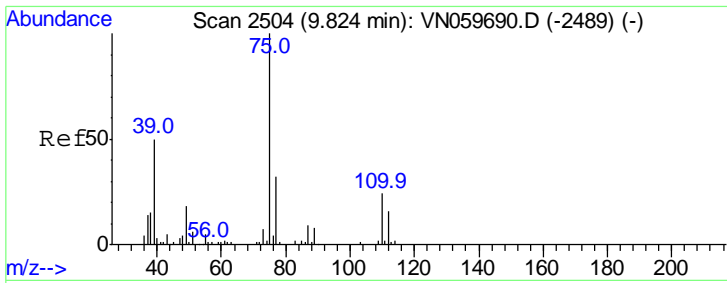
Tgt Ion: 98 Resp: 327246  
 Ion Ratio Lower Upper  
 98 100  
 100 64.4 51.2 76.8



#51  
 4-Methyl-2-Pentanone  
 Concen: 1.481 ug/l  
 RT: 9.97 min Scan# 2548  
 Delta R.T. -0.00 min  
 Lab File: VN059739.D  
 Acq: 16 Jan 2020 18:02

Tgt Ion: 43 Resp: 3440  
 Ion Ratio Lower Upper  
 43 100  
 58 32.8 29.8 44.8



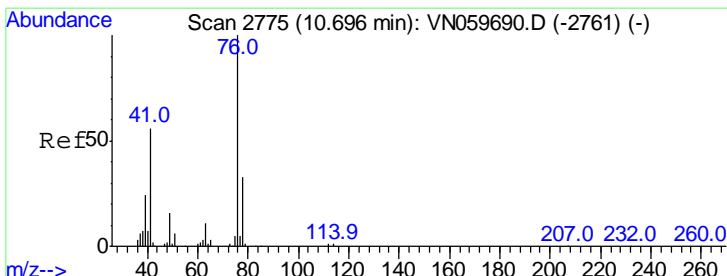
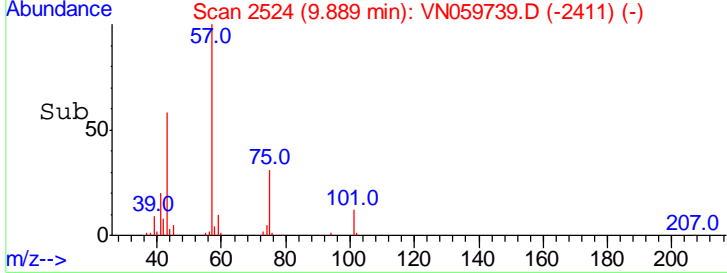
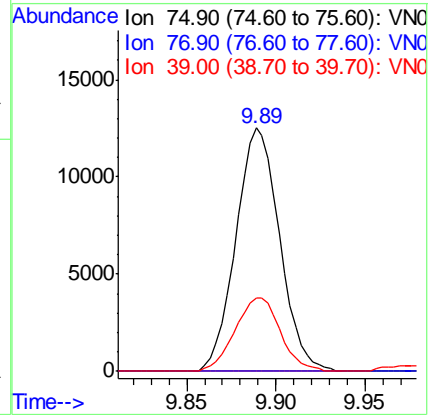
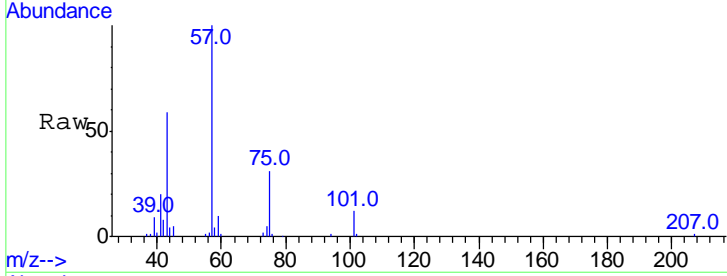


#54  
 cis-1,3-Dichloropropene  
 Concen: 6.936 ug/l  
 RT: 9.89 min Scan# 2524  
 Delta R.T. 0.06 min  
 Lab File: VN059739.D  
 Acq: 16 Jan 2020 18:02

Instrument :  
 MSVOA\_N  
 ClientSampled :  
 PB126118ZHE#10

Tgt Ion: 75 Resp: 21294

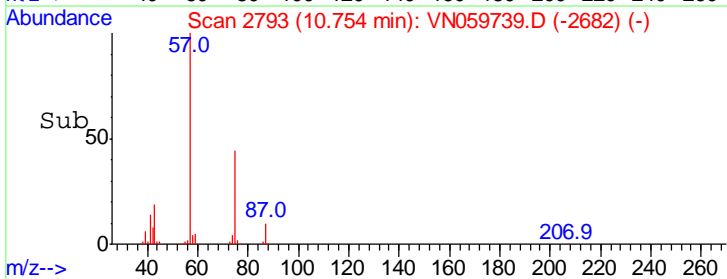
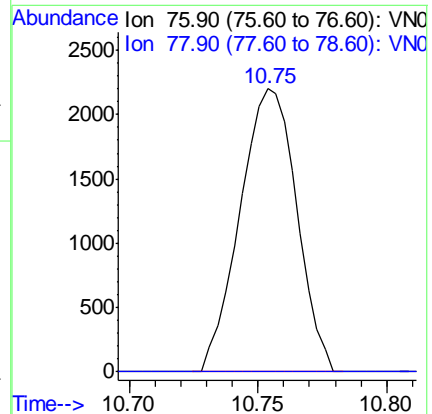
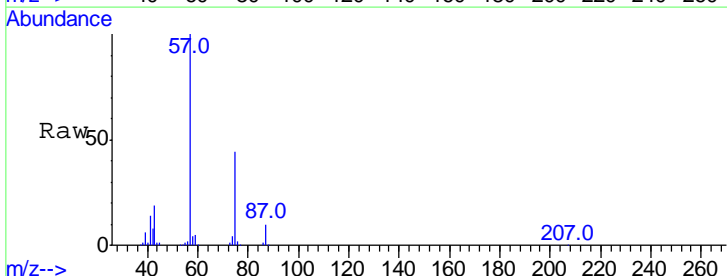
Ion	Ratio	Lower	Upper
75	100		
77	0.0	25.1	37.7#
39	30.2	46.1	69.1#

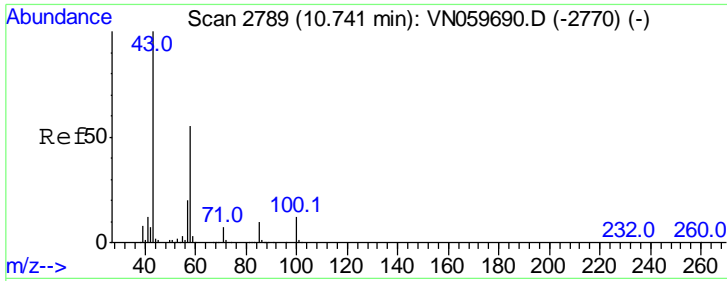


#57  
 1,3-Dichloropropane  
 Concen: 1.140 ug/l  
 RT: 10.75 min Scan# 2793  
 Delta R.T. 0.06 min  
 Lab File: VN059739.D  
 Acq: 16 Jan 2020 18:02

Tgt Ion: 76 Resp: 3365

Ion	Ratio	Lower	Upper
76	100		
78	0.0	25.8	38.8#

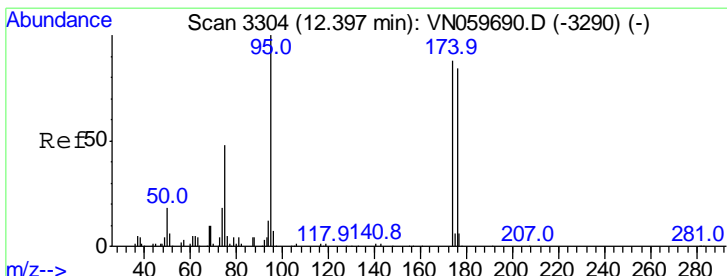
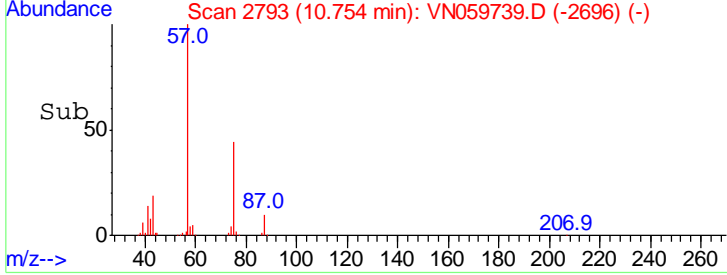
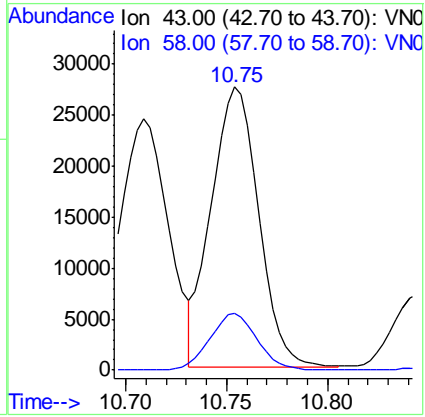
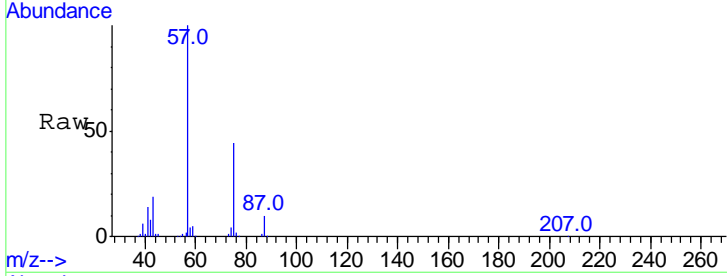




#59  
 2-Hexanone  
 Concen: 26.388 ug/l  
 RT: 10.75 min Scan# 2793  
 Delta R.T. 0.01 min  
 Lab File: VN059739.D  
 Acq: 16 Jan 2020 18:02

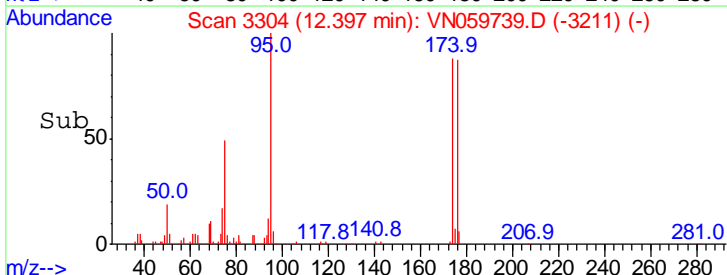
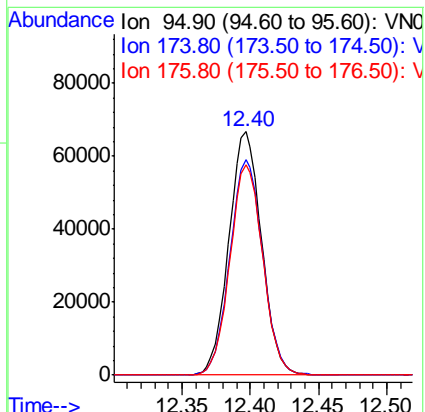
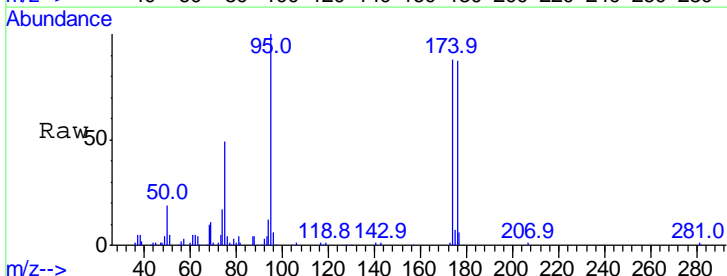
Instrument : MSVOA\_N  
 ClientSampled : PB126118ZHE#10

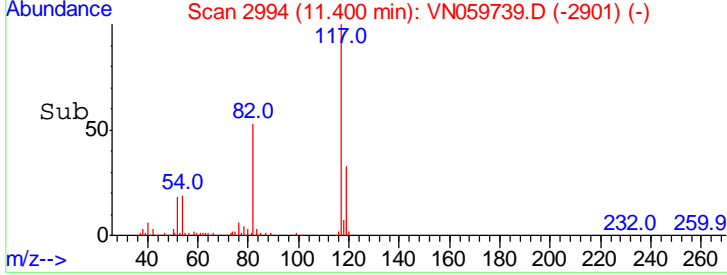
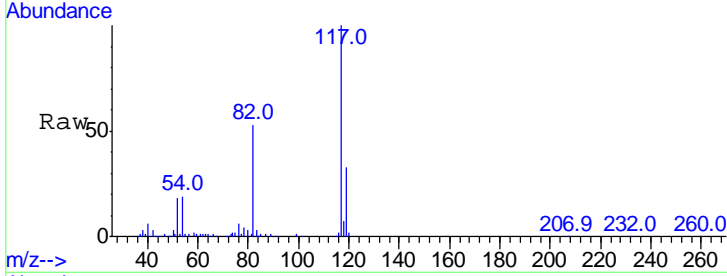
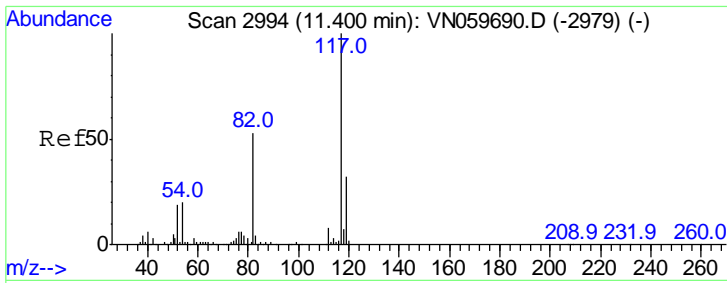
Tgt Ion: 43 Resp: 45159  
 Ion Ratio Lower Upper  
 43 100  
 58 20.0 25.8 77.3#



#62  
 4-Bromofluorobenzene  
 Concen: 46.637 ug/l  
 RT: 12.40 min Scan# 3304  
 Delta R.T. 0.00 min  
 Lab File: VN059739.D  
 Acq: 16 Jan 2020 18:02

Tgt Ion: 95 Resp: 111114  
 Ion Ratio Lower Upper  
 95 100  
 174 88.7 0.0 151.4  
 176 86.6 0.0 146.0

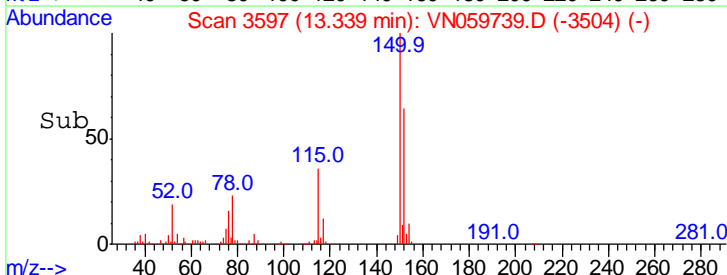
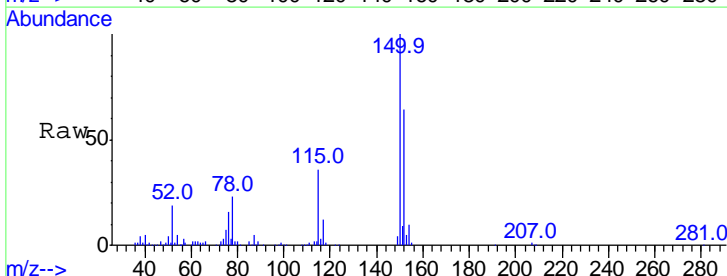
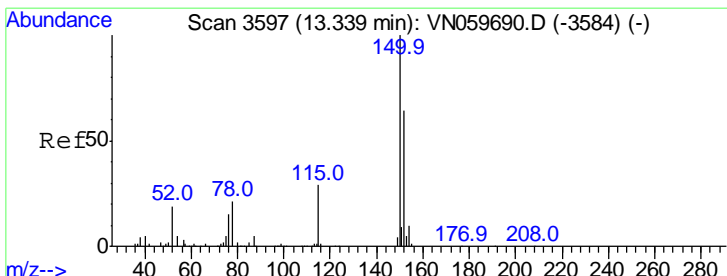
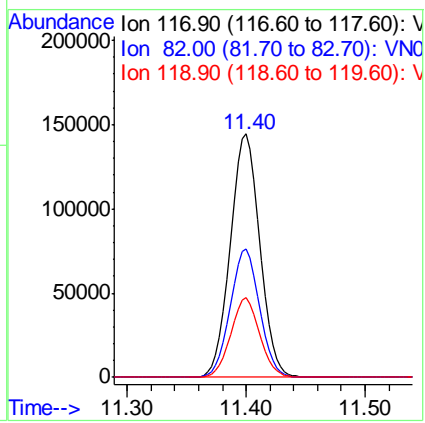




#63  
 Chlorobenzene-d5  
 Concen: 50.000 ug/l  
 RT: 11.40 min Scan# 2994  
 Delta R.T. 0.00 min  
 Lab File: VN059739.D  
 Acq: 16 Jan 2020 18:02

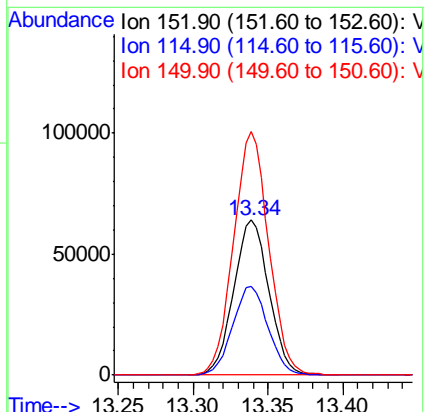
Instrument : MSVOA\_N  
 ClientSampled : PB126118ZHE#10

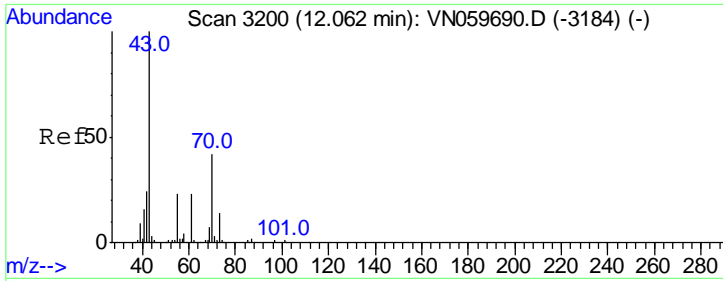
Tgt Ion	Resp	Lower	Upper
117	248610		
82	52.6	45.9	68.9
119	32.5	25.5	38.3



#72  
 1,4-Dichlorobenzene-d4  
 Concen: 50.000 ug/l  
 RT: 13.34 min Scan# 3597  
 Delta R.T. 0.00 min  
 Lab File: VN059739.D  
 Acq: 16 Jan 2020 18:02

Tgt Ion	Resp	Lower	Upper
152	105101		
115	57.8	30.3	90.9
150	156.4	0.0	345.2



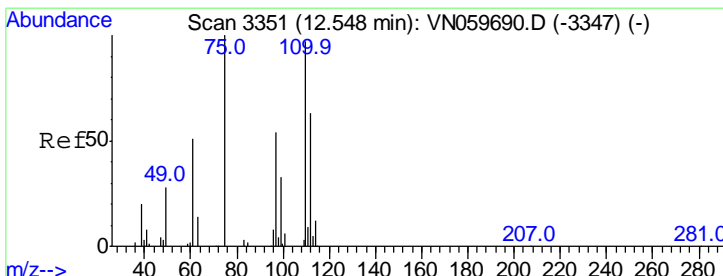
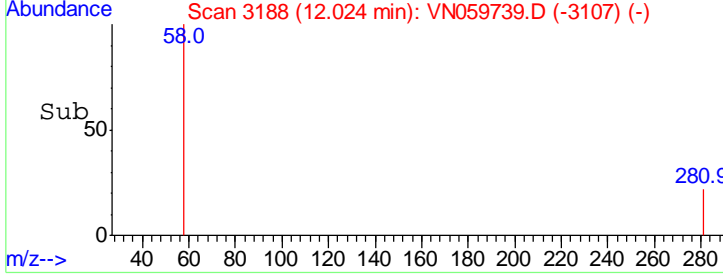
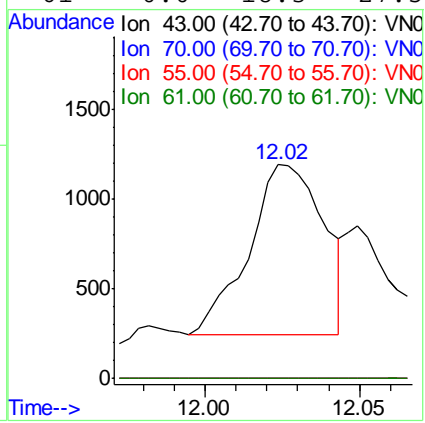
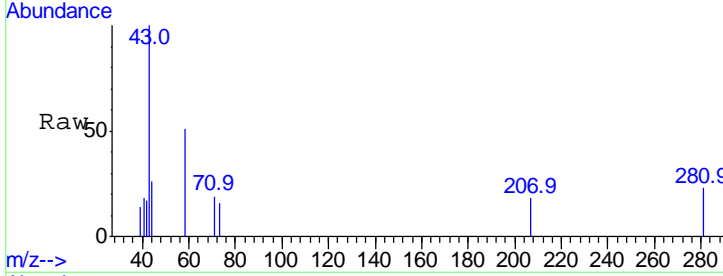


#74  
 N-amyI acetate  
 Concen: 0.531 ug/l  
 RT: 12.02 min Scan# 3188  
 Delta R.T. -0.04 min  
 Lab File: VN059739.D  
 Acq: 16 Jan 2020 18:02

Instrument : MSVOA\_N  
 ClientSampleID : PB126118ZHE#10

Tgt Ion: 43 Resp: 1589

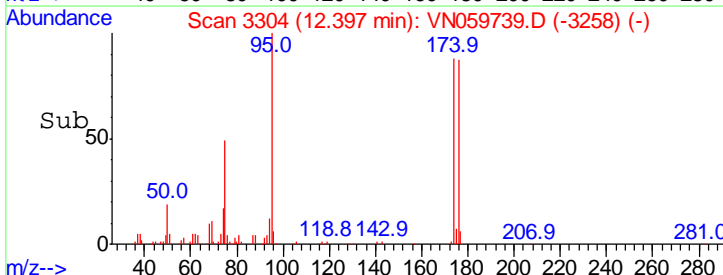
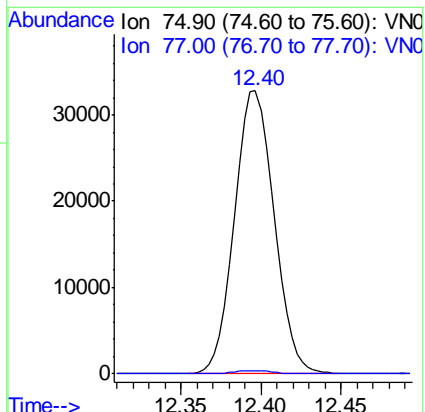
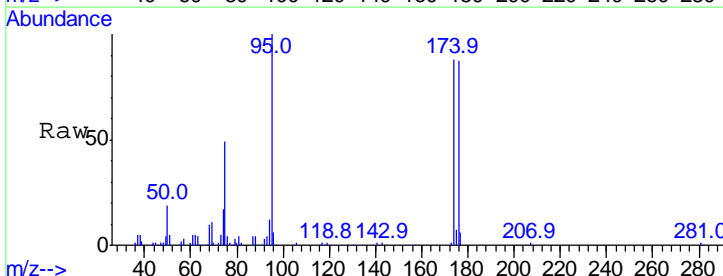
Ion	Ratio	Lower	Upper
43	100		
70	0.0	31.3	46.9#
55	0.0	19.8	29.6#
61	0.0	18.3	27.5#

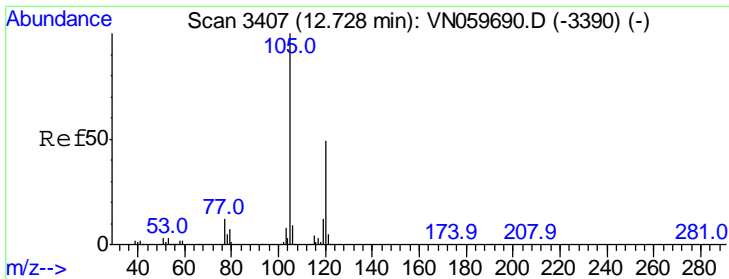


#76  
 1,2,3-Trichloropropane  
 Concen: 31.353 ug/l  
 RT: 12.40 min Scan# 3304  
 Delta R.T. -0.15 min  
 Lab File: VN059739.D  
 Acq: 16 Jan 2020 18:02

Tgt Ion: 75 Resp: 55455

Ion	Ratio	Lower	Upper
75	100		
77	1.0	0.0	0.0#



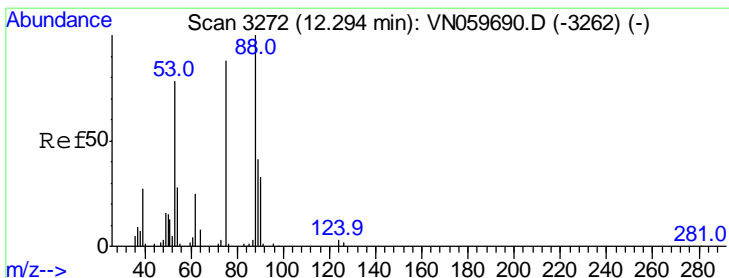
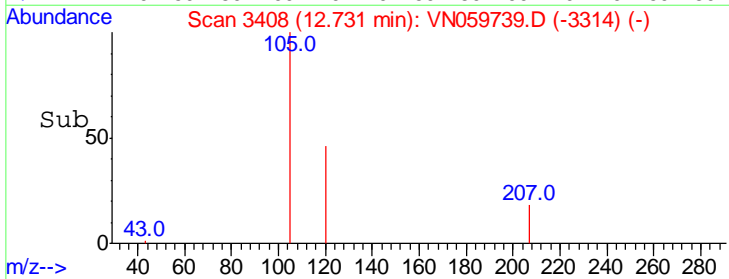
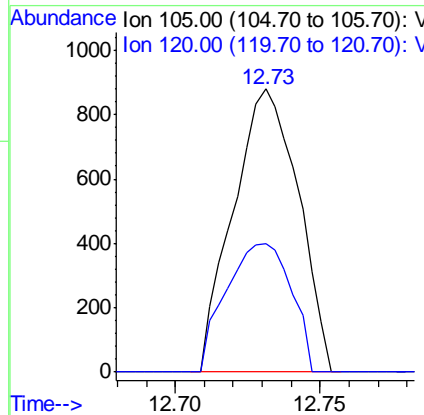
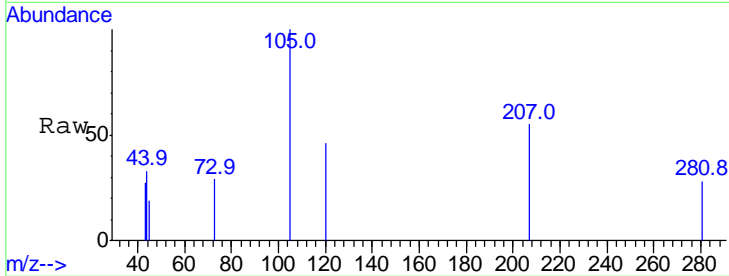


#80  
 1,3,5-Trimethylbenzene  
 Concen: 0.211 ug/l  
 RT: 12.73 min Scan# 3408  
 Delta R.T. 0.00 min  
 Lab File: VN059739.D  
 Acq: 16 Jan 2020 18:02

Instrument :  
 MSVOA\_N  
 ClientSampleId :  
 PB126118ZHE#10

Tgt Ion: 105 Resp: 1369

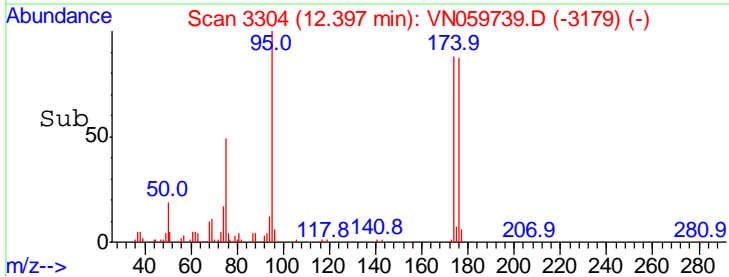
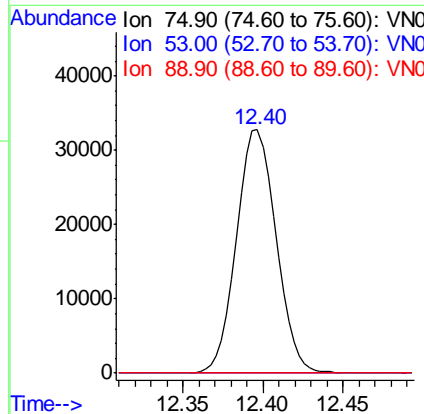
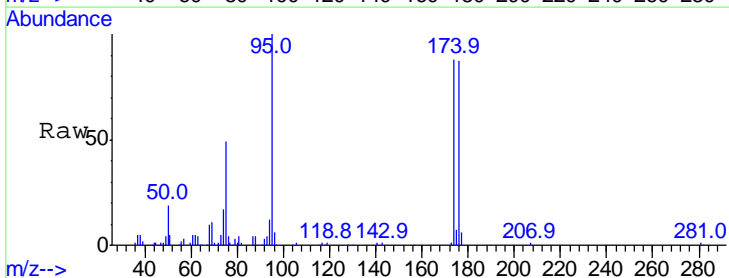
Ion	Ratio	Lower	Upper
105	100		
120	45.5	24.1	72.4



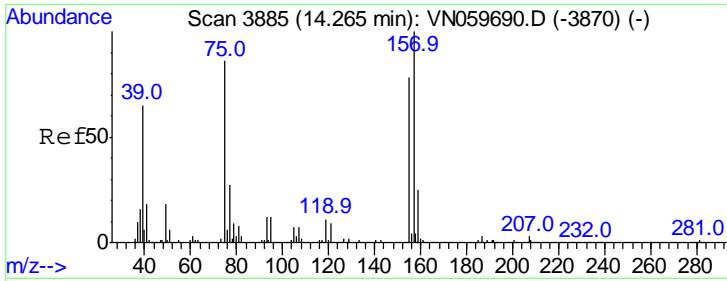
#81  
 trans-1,4-Dichloro-2-butene  
 Concen: 67.330 ug/l  
 RT: 12.40 min Scan# 3304  
 Delta R.T. 0.10 min  
 Lab File: VN059739.D  
 Acq: 16 Jan 2020 18:02

Tgt Ion: 75 Resp: 55455

Ion	Ratio	Lower	Upper
75	100		
53	0.0	78.1	117.1#
89	0.0	35.4	53.2#







#92  
 1,2-Dibromo-3-Chloropropane  
 Concen: Below Cal  
 RT: 14.26 min Scan# 3884  
 Delta R.T. -0.00 min  
 Lab File: VN059739.D  
 Acq: 16 Jan 2020 18:02

Instrument : MSVOA\_N  
 ClientSampled : PB126118ZHE#10

Tgt Ion: 75 Resp: 61

Ion	Ratio	Lower	Upper
75	100		
155	0.0	37.0	110.9#
157	0.0	48.4	145.2#

