

Data Path : Z:\voasrv\HPCHEM1\MSVOA_N\Data\VN011723\
 Data File : VN076277.D
 Acq On : 17 Jan 2023 14:00
 Operator : JC\MD
 Sample : PB150289ZHE#02
 Misc : 5.0mL/MSVOA_N/WATER
 ALS Vial : 9 Sample Multiplier: 1

Instrument :
 MSVOA_N
 ClientSampleId :
 PB150289ZHE#02

Quant Time: Jan 18 00:54:11 2023
 Quant Method : Z:\voasrv\HPCHEM1\MSVOA_N\methods\82N011623W.M
 Quant Title : SW846 8260
 QLast Update : Tue Jan 17 03:59:22 2023
 Response via : Initial Calibration

Compound	R.T.	QIon	Response	Conc	Units	Dev(Min)

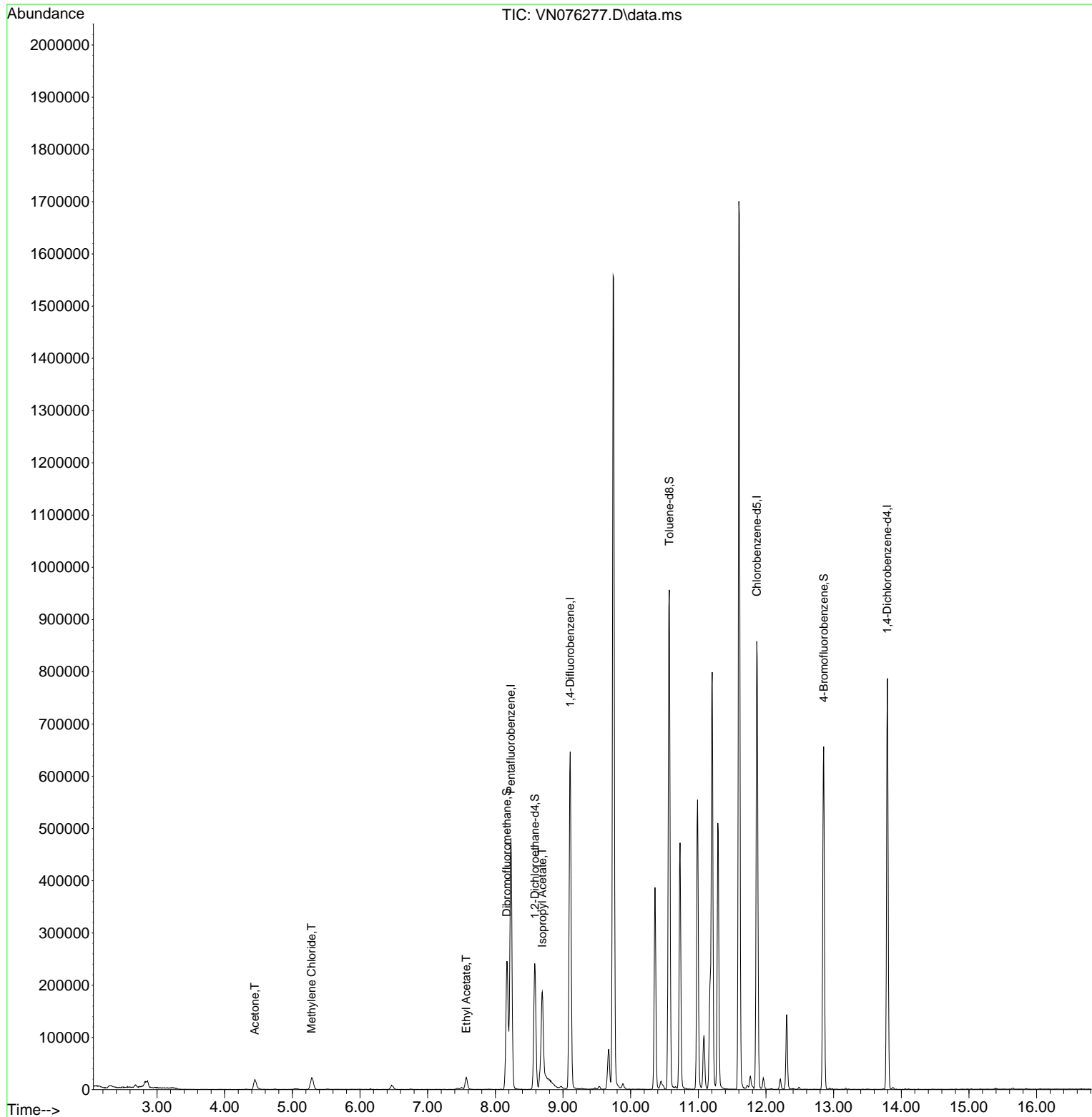
Internal Standards						
1) Pentafluorobenzene	8.230	168	365579	50.000	ug/l	0.00
34) 1,4-Difluorobenzene	9.106	114	588403	50.000	ug/l	0.00
63) Chlorobenzene-d5	11.865	117	526582	50.000	ug/l	0.00
72) 1,4-Dichlorobenzene-d4	13.794	152	219783	50.000	ug/l	0.00
System Monitoring Compounds						
33) 1,2-Dichloroethane-d4	8.583	65	195208	47.689	ug/l	0.00
Spiked Amount	50.000	Range	74 - 125	Recovery	=	95.380%
35) Dibromofluoromethane	8.171	113	172836	46.957	ug/l	0.00
Spiked Amount	50.000	Range	75 - 124	Recovery	=	93.920%
50) Toluene-d8	10.571	98	685903	50.459	ug/l	0.00
Spiked Amount	50.000	Range	86 - 113	Recovery	=	100.920%
62) 4-Bromofluorobenzene	12.853	95	219803	49.532	ug/l	0.00
Spiked Amount	50.000	Range	83 - 123	Recovery	=	99.060%
Target Compounds						
						Qvalue
16) Acetone	4.448	43	36330	27.621	ug/l	94
20) Methylene Chloride	5.283	84	19181	4.390	ug/l	97
37) Ethyl Acetate	7.571	43	34969	8.366	ug/l	96
43) Isopropyl Acetate	8.694	43	249627	36.578	ug/l #	78

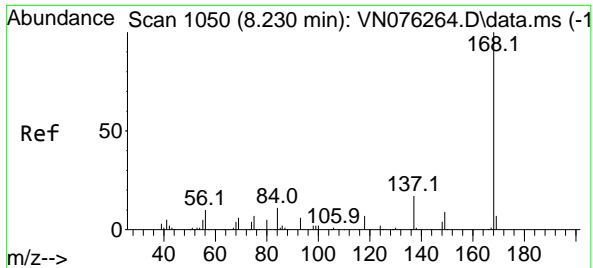
(#) = qualifier out of range (m) = manual integration (+) = signals summed

Data Path : Z:\voasrv\HPCHEM1\MSVOA_N\Data\VN011723\
 Data File : VN076277.D
 Acq On : 17 Jan 2023 14:00
 Operator : JC\MD
 Sample : PB150289ZHE#02
 Misc : 5.0mL/MSVOA_N/WATER
 ALS Vial : 9 Sample Multiplier: 1

Instrument :
 MSVOA_N
 ClientSampleId :
 PB150289ZHE#02

Quant Time: Jan 18 00:54:11 2023
 Quant Method : Z:\voasrv\HPCHEM1\MSVOA_N\methods\82N011623W.M
 Quant Title : SW846 8260
 QLast Update : Tue Jan 17 03:59:22 2023
 Response via : Initial Calibration

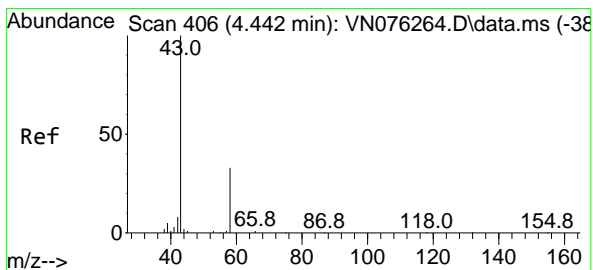
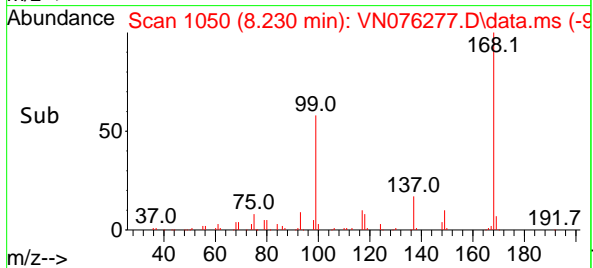
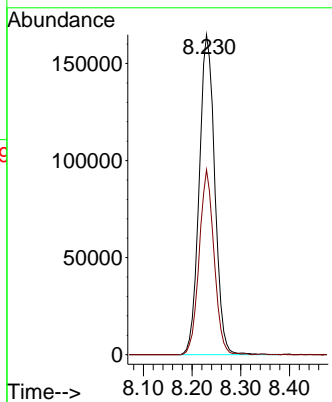
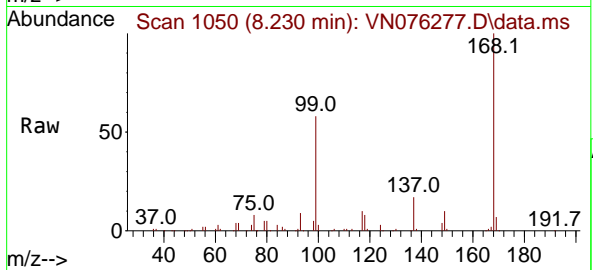




#1
 Pentafluorobenzene
 Concen: 50.000 ug/l
 RT: 8.230 min Scan# 10
 Delta R.T. -0.000 min
 Lab File: VN076277.D
 Acq: 17 Jan 2023 14:00

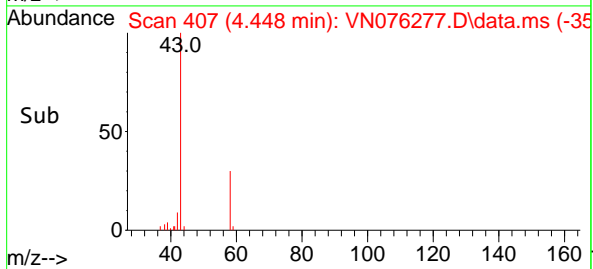
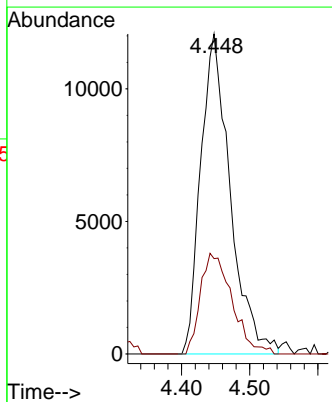
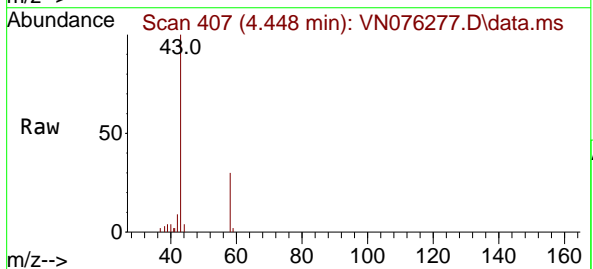
Instrument : MSVOA_N
 ClientSampleId : PB150289ZHE#02

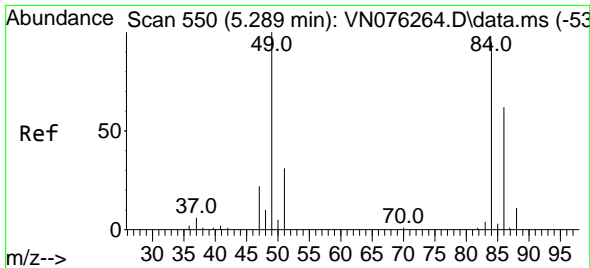
Tgt Ion:168 Resp: 365579
 Ion Ratio Lower Upper
 168 100
 99 57.8 41.6 62.4



#16
 Acetone
 Concen: 27.621 ug/l
 RT: 4.448 min Scan# 407
 Delta R.T. 0.006 min
 Lab File: VN076277.D
 Acq: 17 Jan 2023 14:00

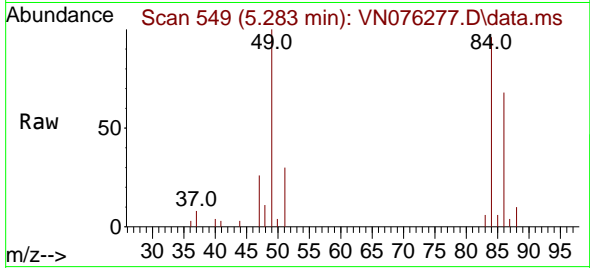
Tgt Ion: 43 Resp: 36330
 Ion Ratio Lower Upper
 43 100
 58 29.8 26.7 40.1





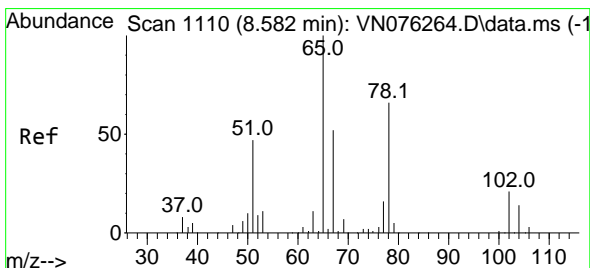
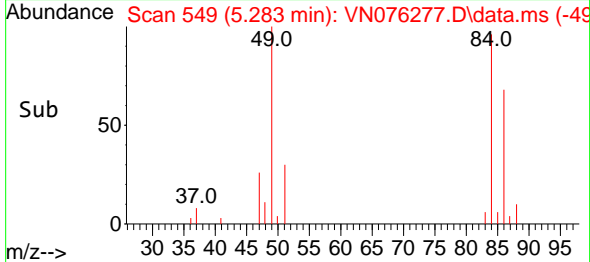
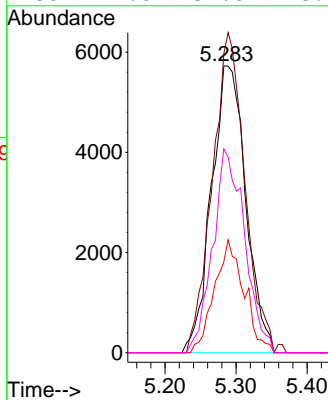
#20
 Methylene Chloride
 Concen: 4.390 ug/l
 RT: 5.283 min Scan# 549
 Delta R.T. -0.006 min
 Lab File: VN076277.D
 Acq: 17 Jan 2023 14:00

Instrument : MSVOA_N
 ClientSampleId : PB150289ZHE#02



Tgt Ion: 84 Resp: 19181

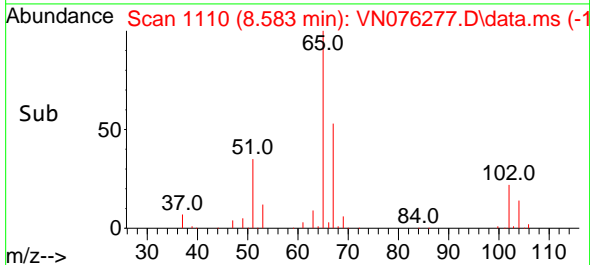
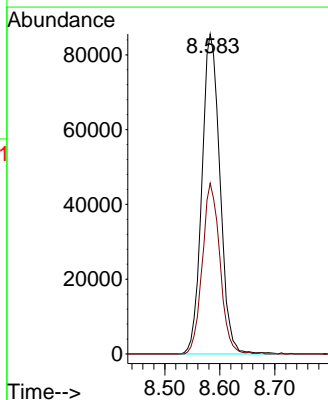
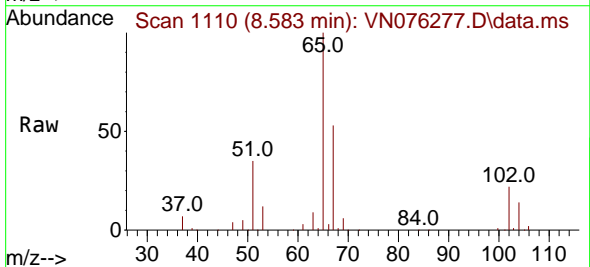
Ion	Ratio	Lower	Upper
84	100		
49	104.2	84.5	126.7
51	31.6	26.0	39.0
86	71.0	52.0	78.0

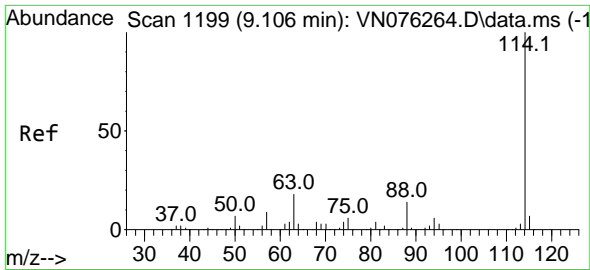


#33
 1,2-Dichloroethane-d4
 Concen: 47.689 ug/l
 RT: 8.583 min Scan# 1110
 Delta R.T. 0.001 min
 Lab File: VN076277.D
 Acq: 17 Jan 2023 14:00

Tgt Ion: 65 Resp: 195208

Ion	Ratio	Lower	Upper
65	100		
67	52.0	0.0	104.6

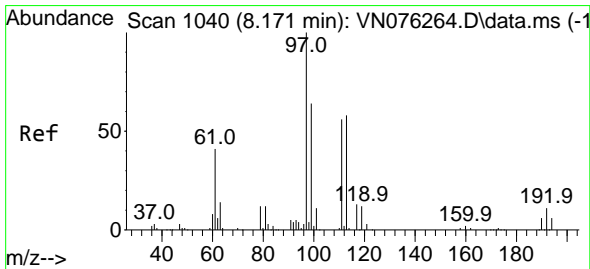
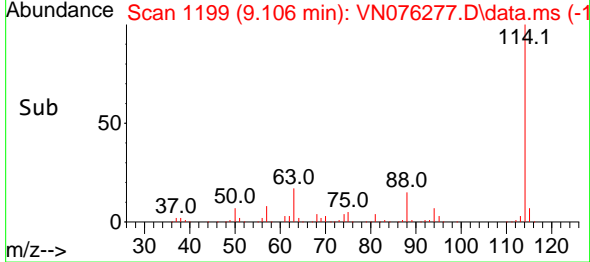
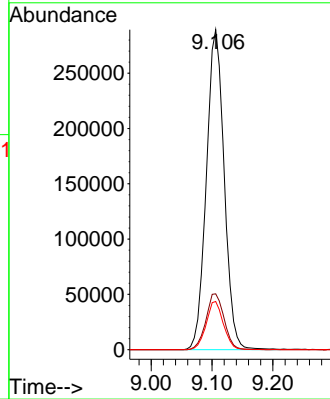
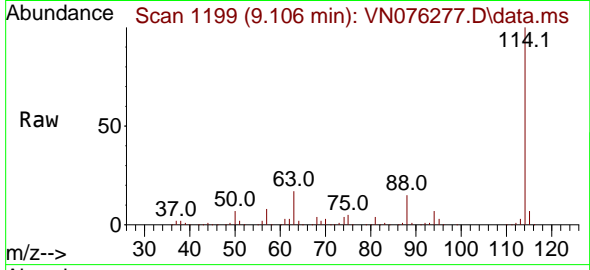




#34
 1,4-Difluorobenzene
 Concen: 50.000 ug/l
 RT: 9.106 min Scan# 1199
 Delta R.T. 0.000 min
 Lab File: VN076277.D
 Acq: 17 Jan 2023 14:00

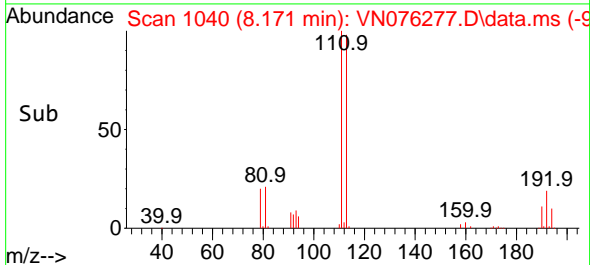
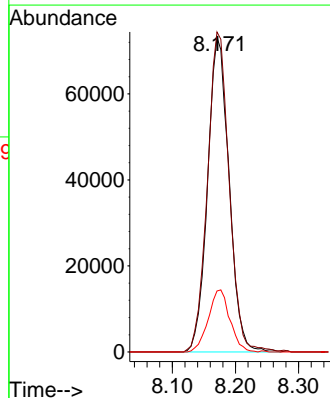
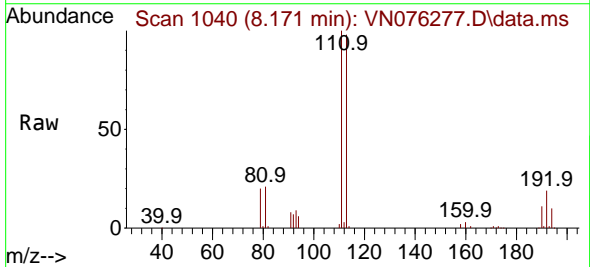
Instrument : MSVOA_N
 ClientSampleId : PB150289ZHE#02

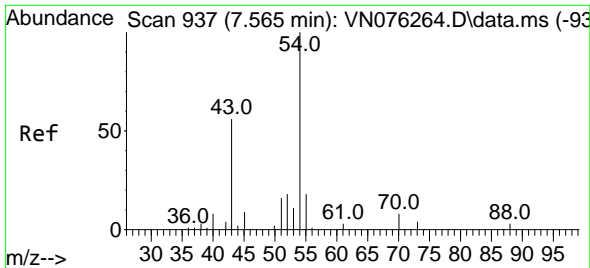
Tgt Ion	Resp	Lower	Upper
114	100		
63	17.4	0.0	35.8
88	15.1	0.0	28.0



#35
 Dibromofluoromethane
 Concen: 46.957 ug/l
 RT: 8.171 min Scan# 1040
 Delta R.T. -0.000 min
 Lab File: VN076277.D
 Acq: 17 Jan 2023 14:00

Tgt Ion	Resp	Lower	Upper
113	100		
111	102.9	82.7	124.1
192	19.8	15.6	23.4



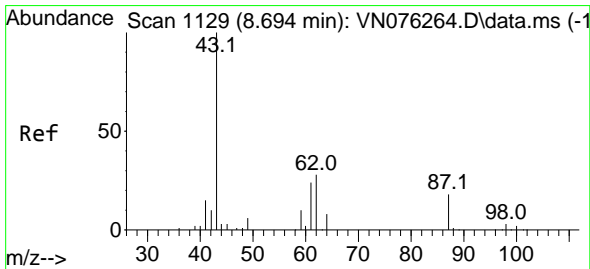
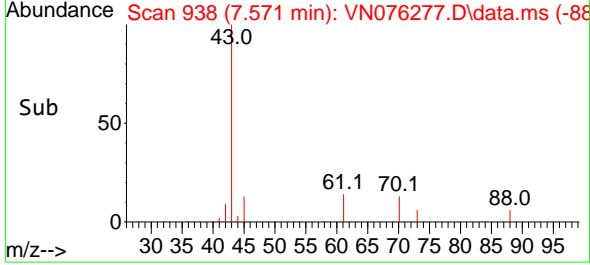
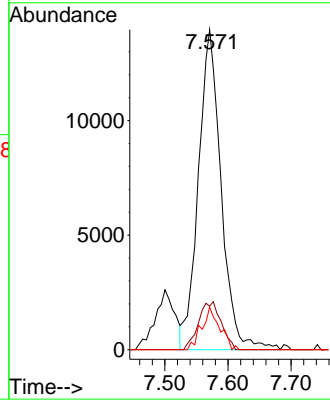
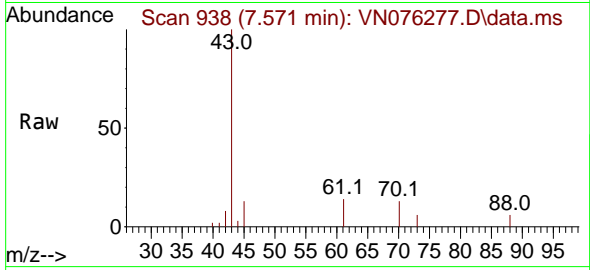


#37
 Ethyl Acetate
 Concen: 8.366 ug/l
 RT: 7.571 min Scan# 911
 Delta R.T. 0.006 min
 Lab File: VN076277.D
 Acq: 17 Jan 2023 14:00

Instrument : MSVOA_N
 ClientSampleId : PB150289ZHE#02

Tgt Ion: 43 Resp: 34969

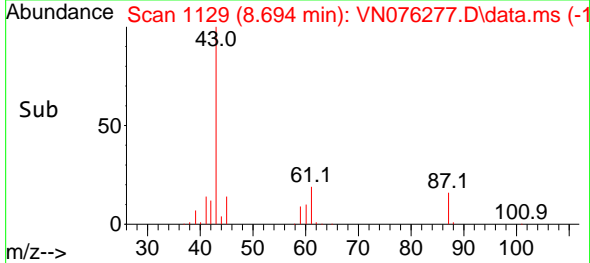
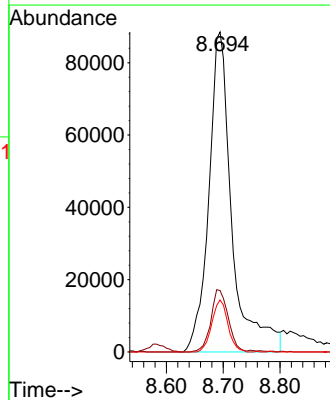
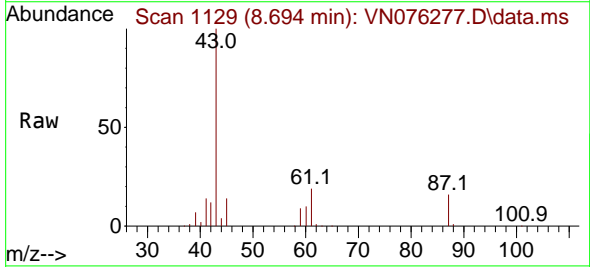
Ion	Ratio	Lower	Upper
43	100		
61	14.9	11.1	16.7
70	10.6	10.0	15.0

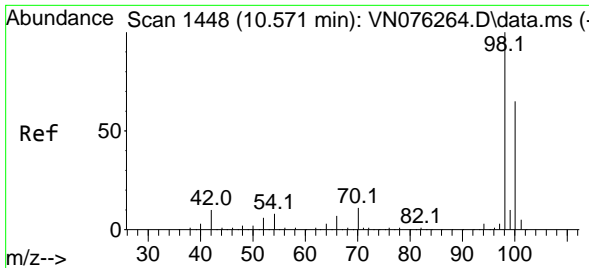


#43
 Isopropyl Acetate
 Concen: 36.578 ug/l
 RT: 8.694 min Scan# 1129
 Delta R.T. 0.000 min
 Lab File: VN076277.D
 Acq: 17 Jan 2023 14:00

Tgt Ion: 43 Resp: 249627

Ion	Ratio	Lower	Upper
43	100		
61	14.6	23.5	35.3#
87	11.3	13.8	20.6#

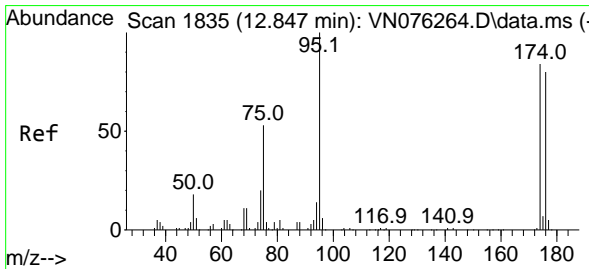
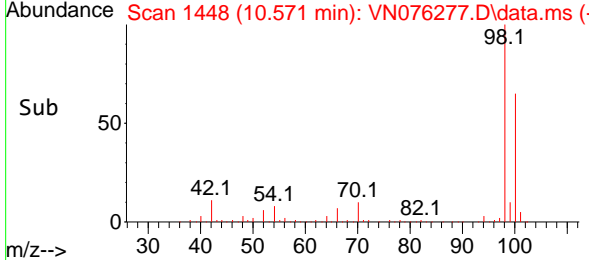
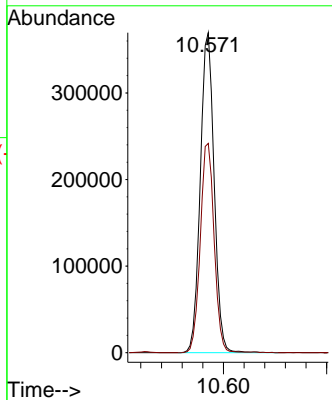
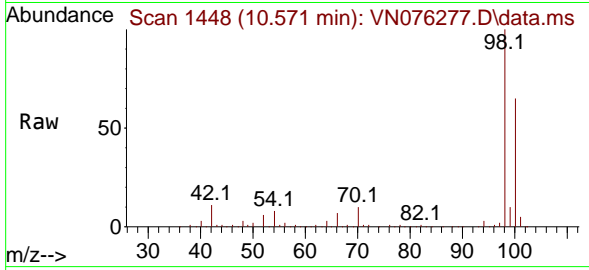




#50
 Toluene-d8
 Concen: 50.459 ug/l
 RT: 10.571 min Scan# 14
 Delta R.T. -0.000 min
 Lab File: VN076277.D
 Acq: 17 Jan 2023 14:00

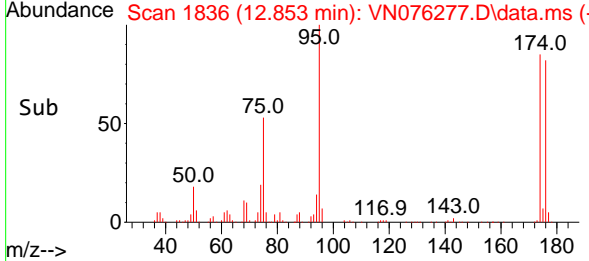
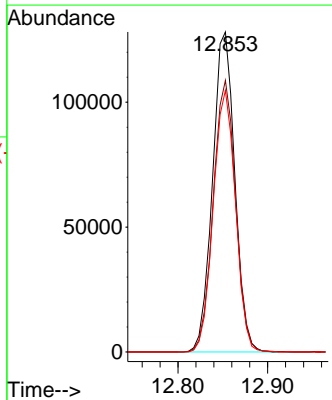
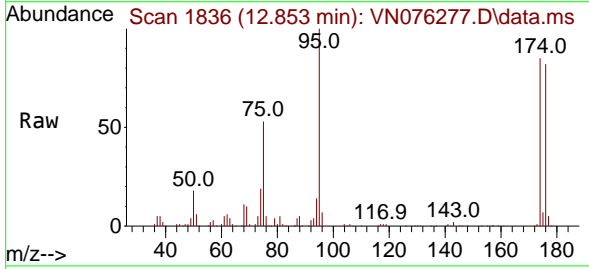
Instrument : MSVOA_N
 ClientSampleId : PB150289ZHE#02

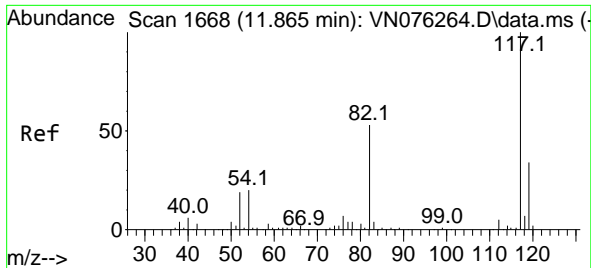
Tgt Ion: 98 Resp: 685903
 Ion Ratio Lower Upper
 98 100
 100 65.5 52.2 78.4



#62
 4-Bromofluorobenzene
 Concen: 49.532 ug/l
 RT: 12.853 min Scan# 1836
 Delta R.T. 0.006 min
 Lab File: VN076277.D
 Acq: 17 Jan 2023 14:00

Tgt Ion: 95 Resp: 219803
 Ion Ratio Lower Upper
 95 100
 174 85.8 0.0 174.6
 176 81.7 0.0 167.8

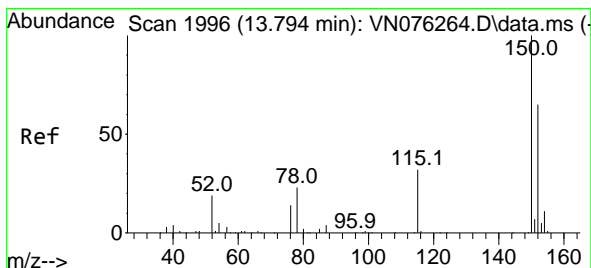
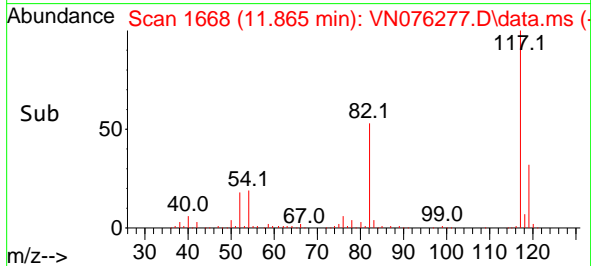
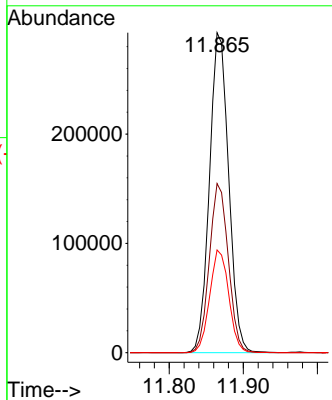
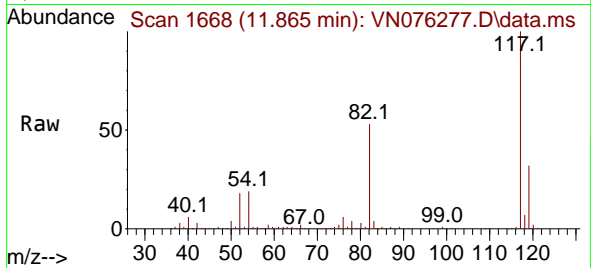




#63
 Chlorobenzene-d5
 Concen: 50.000 ug/l
 RT: 11.865 min Scan# 11
 Delta R.T. -0.000 min
 Lab File: VN076277.D
 Acq: 17 Jan 2023 14:00

Instrument : MSVOA_N
 ClientSampleId : PB150289ZHE#02

Tgt Ion	Resp	Lower	Upper
117	526582	100	100
82	52.8	42.2	63.2
119	32.1	26.9	40.3



#72
 1,4-Dichlorobenzene-d4
 Concen: 50.000 ug/l
 RT: 13.794 min Scan# 1996
 Delta R.T. -0.000 min
 Lab File: VN076277.D
 Acq: 17 Jan 2023 14:00

Tgt Ion	Resp	Lower	Upper
152	219783	100	100
115	58.1	29.6	88.9
150	155.1	0.0	351.4

