

Data Path : Z:\voasrv\HPCHEM1\MSVOA_N\Data\VN011923\
 Data File : VN076316.D
 Acq On : 19 Jan 2023 12:31
 Operator : JC\MD
 Sample : 01214-18
 Misc : 5.0mL/MSVOA_N/WATER
 ALS Vial : 8 Sample Multiplier: 1

Instrument :
 MSVOA_N
 ClientSampleId :
 TJRC-011823-GW

Quant Time: Jan 20 00:53:46 2023
 Quant Method : Z:\voasrv\HPCHEM1\MSVOA_N\methods\82N011623W.M
 Quant Title : SW846 8260
 QLast Update : Tue Jan 17 03:59:22 2023
 Response via : Initial Calibration

Compound	R.T.	QIon	Response	Conc	Units	Dev(Min)

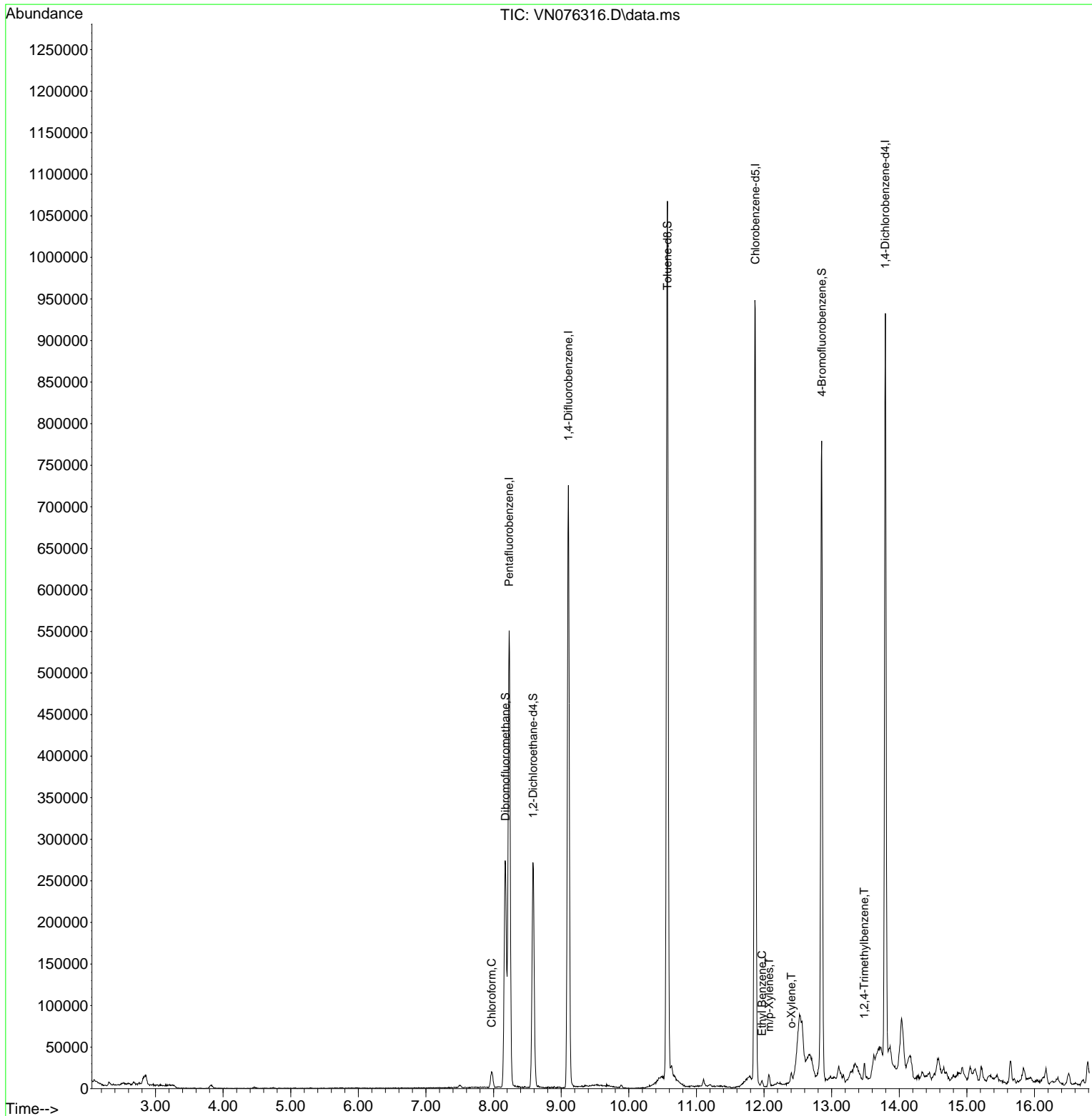
Internal Standards						
1) Pentafluorobenzene	8.230	168	424814	50.000	ug/l	0.00
34) 1,4-Difluorobenzene	9.106	114	660573	50.000	ug/l	0.00
63) Chlorobenzene-d5	11.871	117	592392	50.000	ug/l	0.00
72) 1,4-Dichlorobenzene-d4	13.794	152	254791	50.000	ug/l	0.00
System Monitoring Compounds						
33) 1,2-Dichloroethane-d4	8.583	65	219466	46.139	ug/l	0.00
Spiked Amount	50.000	Range	74 - 125	Recovery	=	92.280%
35) Dibromofluoromethane	8.177	113	195675	47.354	ug/l	0.00
Spiked Amount	50.000	Range	75 - 124	Recovery	=	94.700%
50) Toluene-d8	10.571	98	764572	50.101	ug/l	0.00
Spiked Amount	50.000	Range	86 - 113	Recovery	=	100.200%
62) 4-Bromofluorobenzene	12.853	95	256630	51.513	ug/l	0.00
Spiked Amount	50.000	Range	83 - 123	Recovery	=	103.020%
Target Compounds						
						Qvalue
30) Chloroform	7.971	83	18626	2.258	ug/l	93
67) Ethyl Benzene	11.971	91	4875	0.227	ug/l	93
68) m/p-Xylenes	12.076	106	5178	0.603	ug/l	90
69) o-Xylene	12.406	106	3126	0.370	ug/l	91
84) 1,2,4-Trimethylbenzene	13.482	105	12207	0.737	ug/l	97

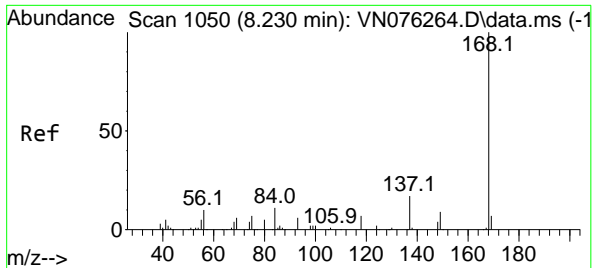
(#) = qualifier out of range (m) = manual integration (+) = signals summed

Data Path : Z:\voasrv\HPCHEM1\MSVOA_N\Data\VN011923\
 Data File : VN076316.D
 Acq On : 19 Jan 2023 12:31
 Operator : JC\MD
 Sample : 01214-18
 Misc : 5.0mL/MSVOA_N/WATER
 ALS Vial : 8 Sample Multiplier: 1

Instrument :
 MSVOA_N
 ClientSampleId :
 TJRC-011823-GW

Quant Time: Jan 20 00:53:46 2023
 Quant Method : Z:\voasrv\HPCHEM1\MSVOA_N\methods\82N011623W.M
 Quant Title : SW846 8260
 QLast Update : Tue Jan 17 03:59:22 2023
 Response via : Initial Calibration

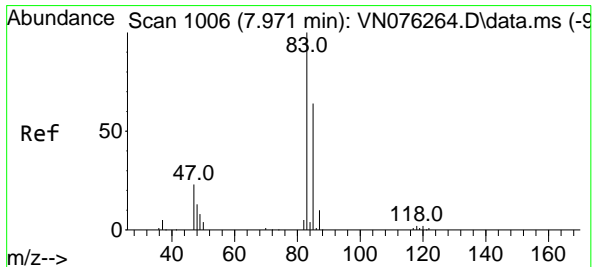
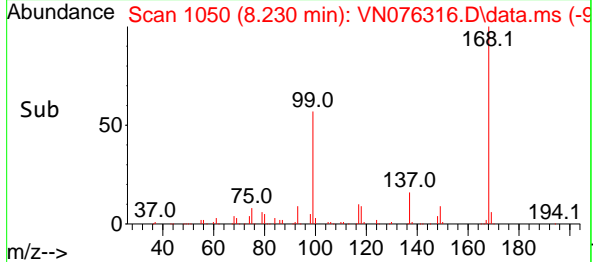
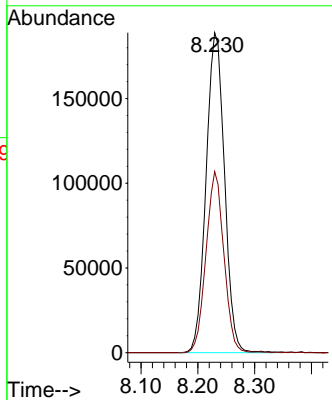
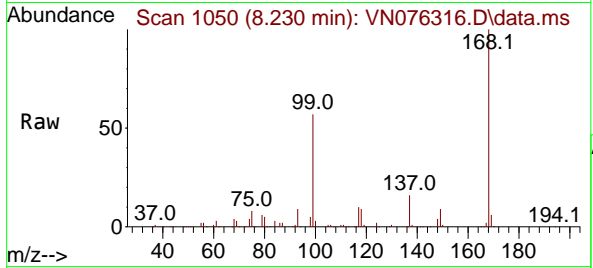




#1
 Pentafluorobenzene
 Concen: 50.000 ug/l
 RT: 8.230 min Scan# 1006
 Delta R.T. -0.000 min
 Lab File: VN076316.D
 Acq: 19 Jan 2023 12:31

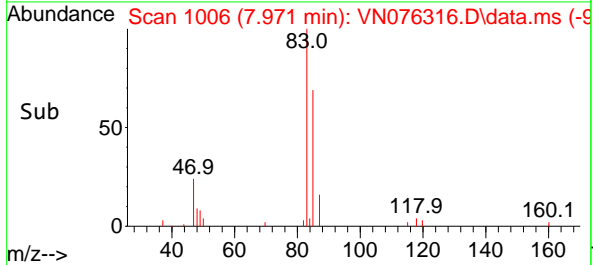
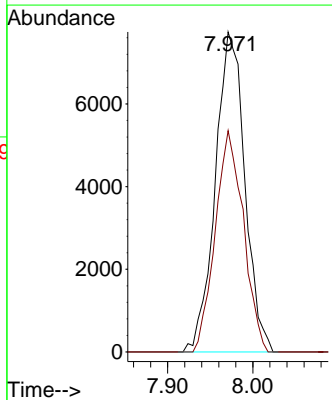
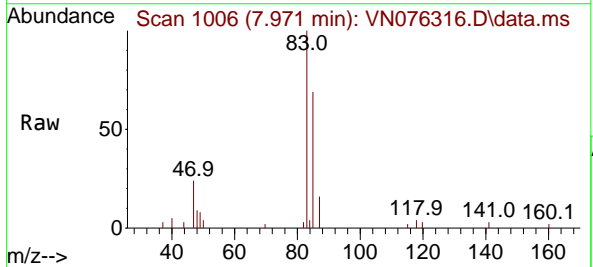
Instrument : MSVOA_N
 ClientSampleId : TJRC-011823-GW

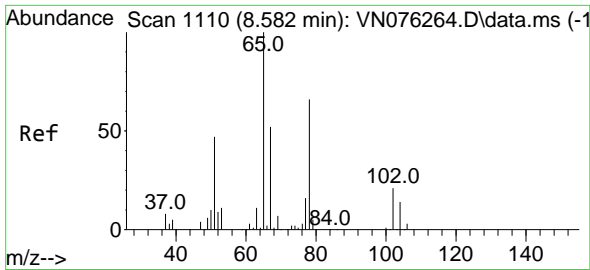
Tgt Ion:168 Resp: 424814
 Ion Ratio Lower Upper
 168 100
 99 56.6 41.6 62.4



#30
 Chloroform
 Concen: 2.258 ug/l
 RT: 7.971 min Scan# 1006
 Delta R.T. -0.000 min
 Lab File: VN076316.D
 Acq: 19 Jan 2023 12:31

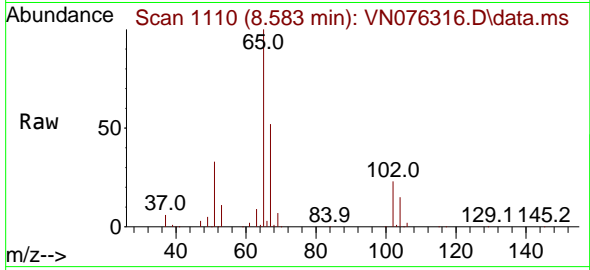
Tgt Ion: 83 Resp: 18626
 Ion Ratio Lower Upper
 83 100
 85 69.2 51.0 76.6



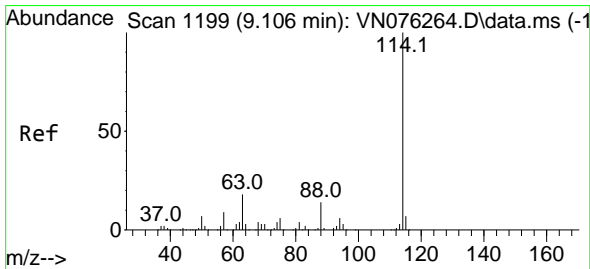
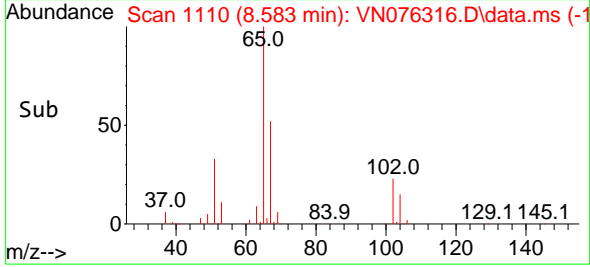
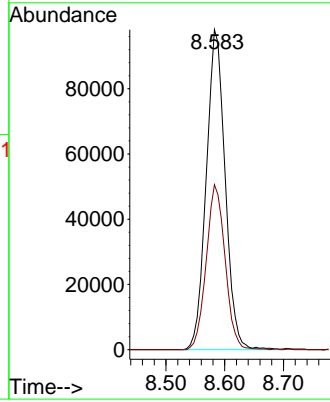


#33
 1,2-Dichloroethane-d4
 Concen: 46.139 ug/l
 RT: 8.583 min Scan# 1110
 Delta R.T. 0.001 min
 Lab File: VN076316.D
 Acq: 19 Jan 2023 12:31

Instrument : MSVOA_N
 ClientSampleId : TJRC-011823-GW

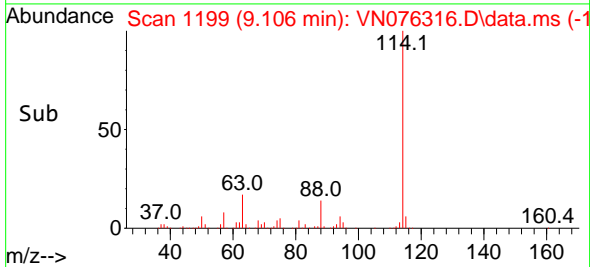
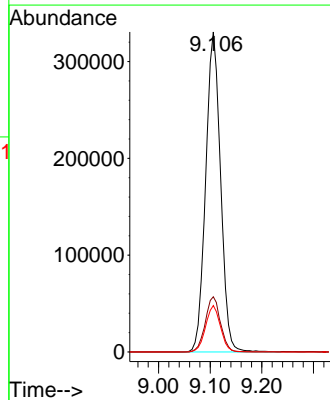
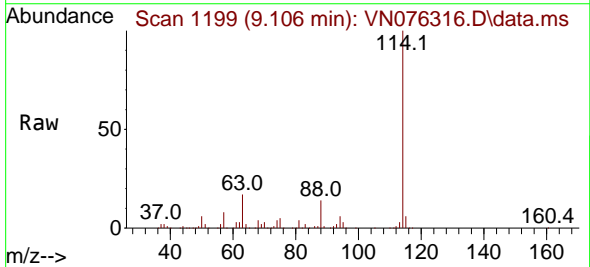


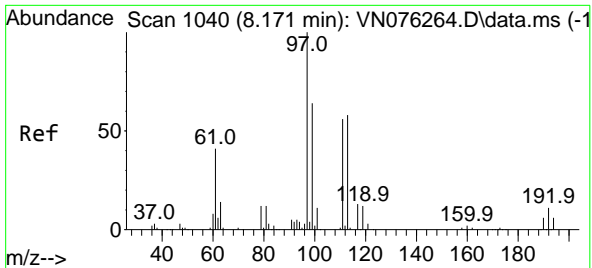
Tgt Ion: 65 Resp: 219466
 Ion Ratio Lower Upper
 65 100
 67 51.5 0.0 104.6



#34
 1,4-Difluorobenzene
 Concen: 50.000 ug/l
 RT: 9.106 min Scan# 1199
 Delta R.T. 0.000 min
 Lab File: VN076316.D
 Acq: 19 Jan 2023 12:31

Tgt Ion: 114 Resp: 660573
 Ion Ratio Lower Upper
 114 100
 63 17.3 0.0 35.8
 88 14.5 0.0 28.0



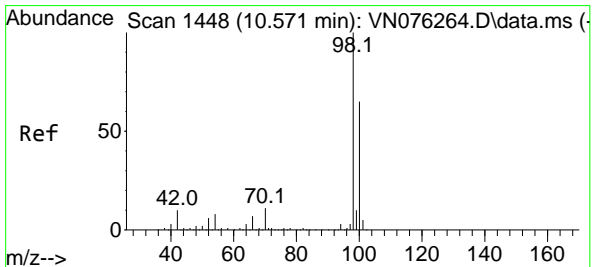
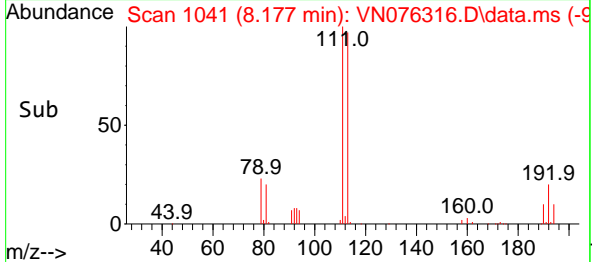
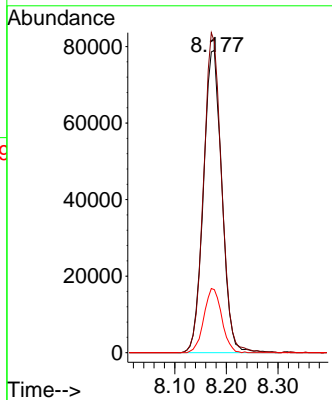
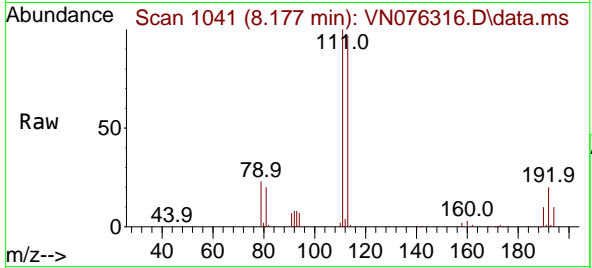


#35
 Dibromofluoromethane
 Concen: 47.354 ug/l
 RT: 8.177 min Scan# 1041
 Delta R.T. 0.006 min
 Lab File: VN076316.D
 Acq: 19 Jan 2023 12:31

Instrument : MSVOA_N
 ClientSampleId : TJRC-011823-GW

Tgt Ion:113 Resp: 195675

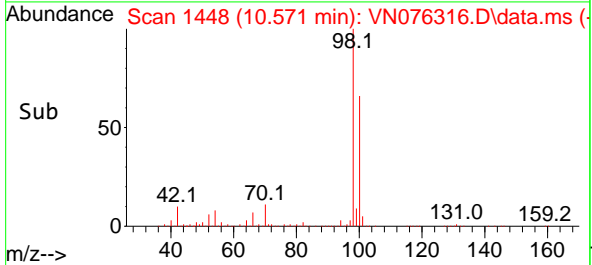
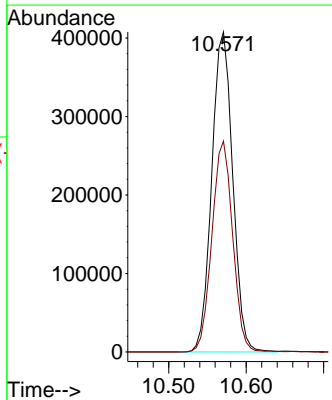
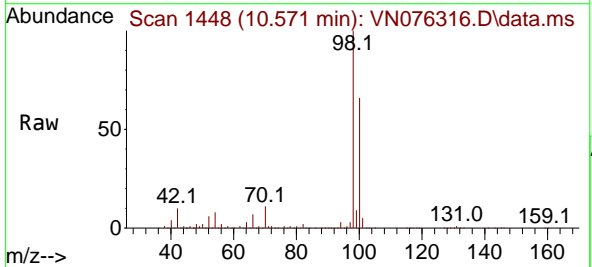
Ion	Ratio	Lower	Upper
113	100		
111	103.2	82.7	124.1
192	20.5	15.6	23.4

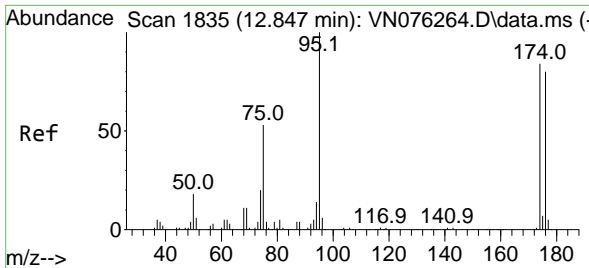


#50
 Toluene-d8
 Concen: 50.101 ug/l
 RT: 10.571 min Scan# 1448
 Delta R.T. -0.000 min
 Lab File: VN076316.D
 Acq: 19 Jan 2023 12:31

Tgt Ion: 98 Resp: 764572

Ion	Ratio	Lower	Upper
98	100		
100	65.5	52.2	78.4



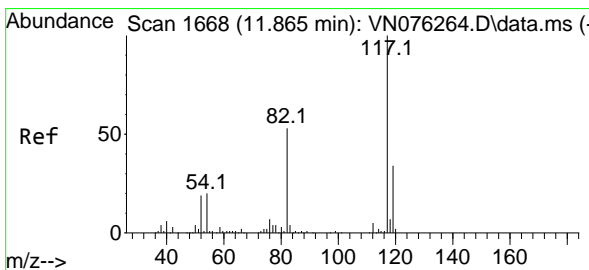
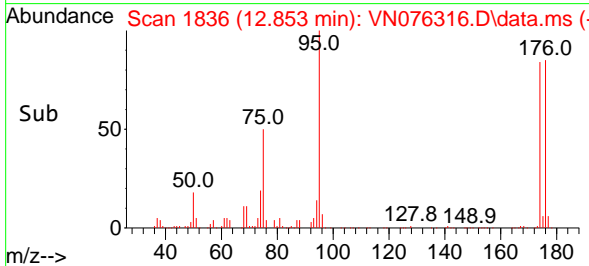
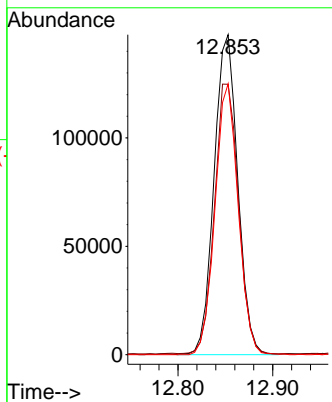
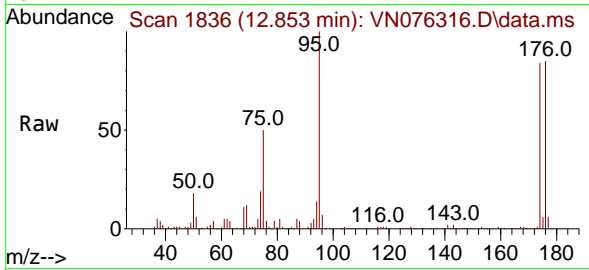


#62
 4-Bromofluorobenzene
 Concen: 51.513 ug/l
 RT: 12.853 min Scan# 1836
 Delta R.T. 0.006 min
 Lab File: VN076316.D
 Acq: 19 Jan 2023 12:31

Instrument :
 MSVOA_N
 ClientSampleId :
 TJRC-011823-GW

Tgt Ion: 95 Resp: 256630

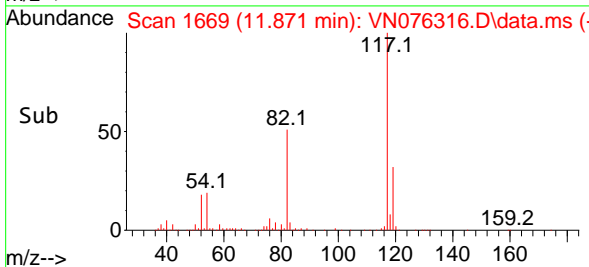
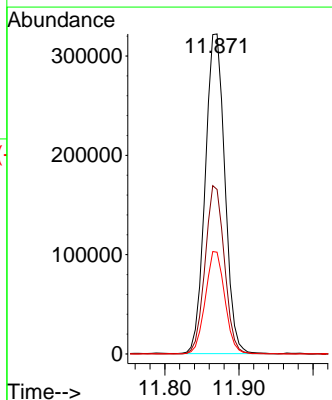
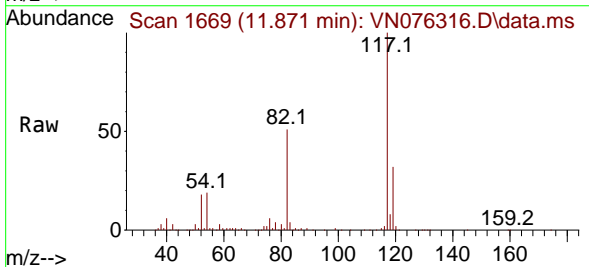
Ion	Ratio	Lower	Upper
95	100		
174	85.9	0.0	174.6
176	82.7	0.0	167.8

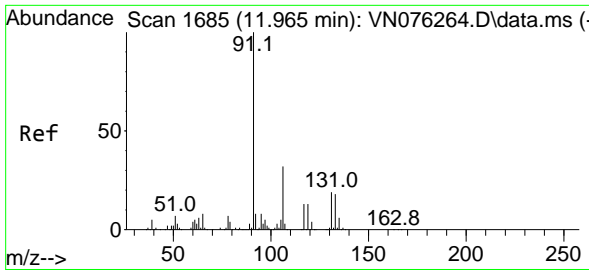


#63
 Chlorobenzene-d5
 Concen: 50.000 ug/l
 RT: 11.871 min Scan# 1669
 Delta R.T. 0.006 min
 Lab File: VN076316.D
 Acq: 19 Jan 2023 12:31

Tgt Ion: 117 Resp: 592392

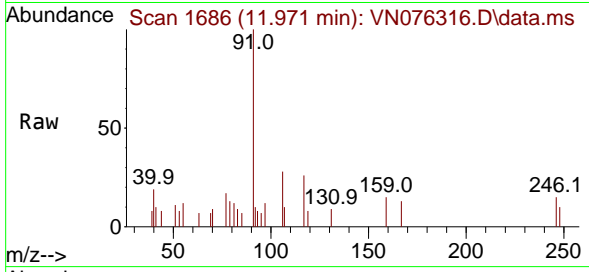
Ion	Ratio	Lower	Upper
117	100		
82	51.5	42.2	63.2
119	31.8	26.9	40.3



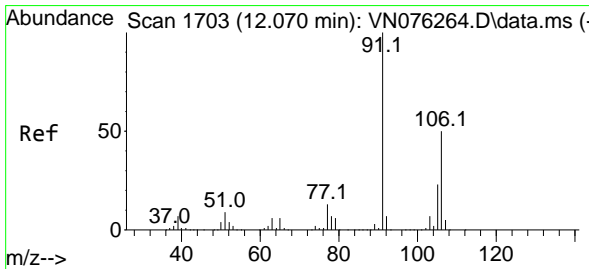
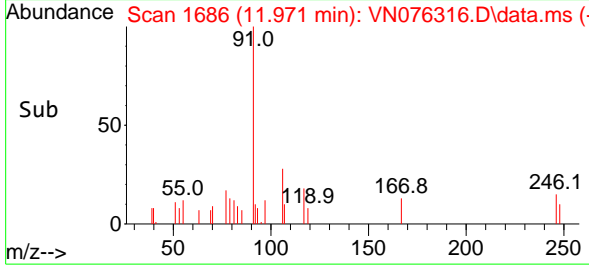
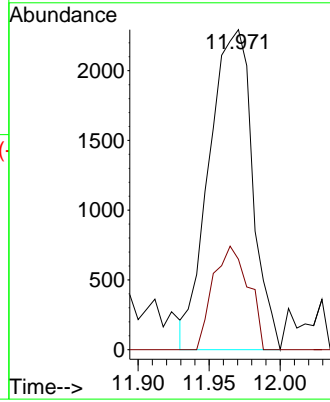


#67
 Ethyl Benzene
 Concen: 0.227 ug/l
 RT: 11.971 min Scan# 110
 Delta R.T. 0.006 min
 Lab File: VN076316.D
 Acq: 19 Jan 2023 12:31

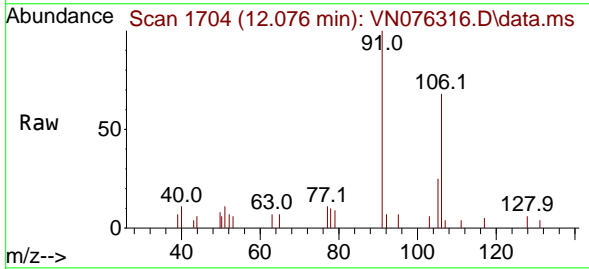
Instrument :
 MSVOA_N
 ClientSampleId :
 TJRC-011823-GW



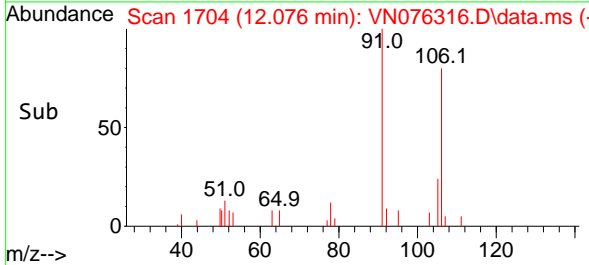
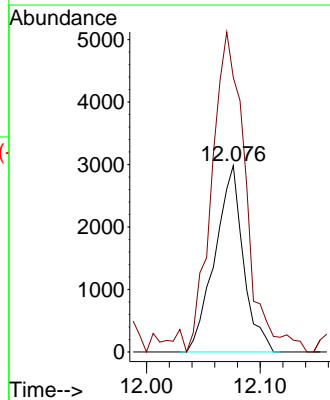
Tgt Ion: 91 Resp: 4875
 Ion Ratio Lower Upper
 91 100
 106 28.2 25.5 38.3

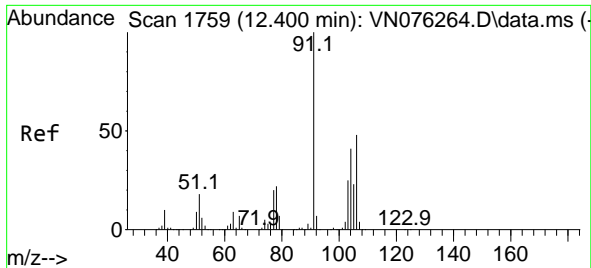


#68
 m/p-Xylenes
 Concen: 0.603 ug/l
 RT: 12.076 min Scan# 1704
 Delta R.T. 0.006 min
 Lab File: VN076316.D
 Acq: 19 Jan 2023 12:31



Tgt Ion: 106 Resp: 5178
 Ion Ratio Lower Upper
 106 100
 91 212.2 157.5 236.3

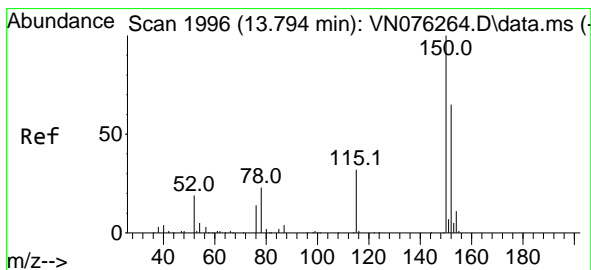
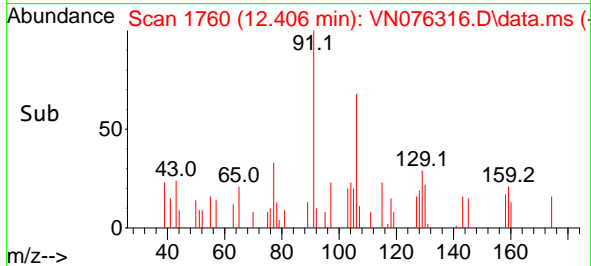
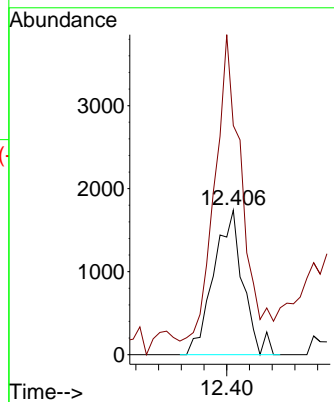
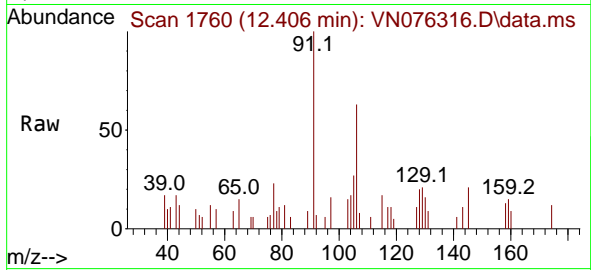




#69
 o-Xylene
 Concen: 0.370 ug/l
 RT: 12.406 min Scan# 11
 Delta R.T. 0.006 min
 Lab File: VN076316.D
 Acq: 19 Jan 2023 12:31

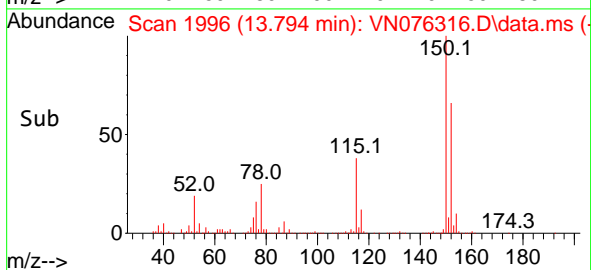
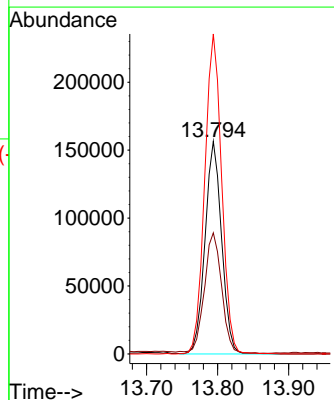
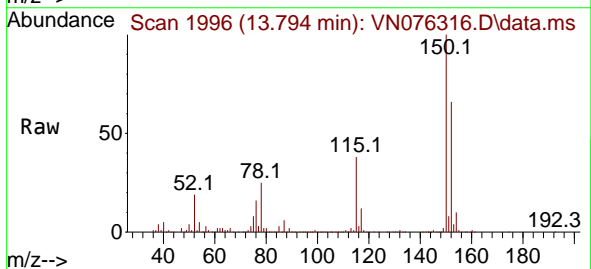
Instrument : MSVOA_N
 ClientSampleId : TJRC-011823-GW

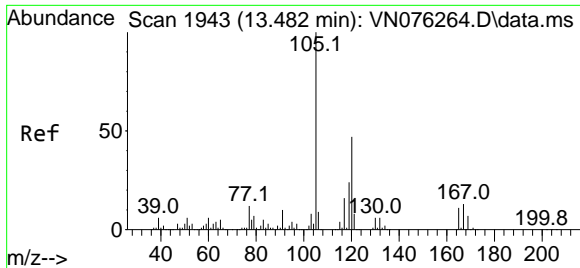
Tgt Ion:106 Resp: 3126
 Ion Ratio Lower Upper
 106 100
 91 192.2 103.2 309.4



#72
 1,4-Dichlorobenzene-d4
 Concen: 50.000 ug/l
 RT: 13.794 min Scan# 1996
 Delta R.T. -0.000 min
 Lab File: VN076316.D
 Acq: 19 Jan 2023 12:31

Tgt Ion:152 Resp: 254791
 Ion Ratio Lower Upper
 152 100
 115 59.3 29.6 88.9
 150 153.3 0.0 351.4





#84
 1,2,4-Trimethylbenzene
 Concen: 0.737 ug/l
 RT: 13.482 min Scan# 1943
 Delta R.T. 0.000 min
 Lab File: VN076316.D
 Acq: 19 Jan 2023 12:31

Instrument : MSVOA_N
 ClientSampleId : TJRC-011823-GW

Tgt Ion:105 Resp: 12207

Ion	Ratio	Lower	Upper
105	100		
120	43.4	22.9	68.5

