

Data Path : Z:\voasrv\HPCHEM1\MSVOA_N\Data\VN012323\
 Data File : VN076365.D
 Acq On : 23 Jan 2023 14:36
 Operator : JC\MD
 Sample : 01234-01ME
 Misc : 5.04g/10mL/100uL/5.00mL/MSVOA_N/MEOH
 ALS Vial : 12 Sample Multiplier: 1

Instrument :
 MSVOA_N
 ClientSampleId :
 EO-02-11923

Quant Time: Jan 24 00:37:48 2023
 Quant Method : Z:\voasrv\HPCHEM1\MSVOA_N\methods\82N011623W.M
 Quant Title : SW846 8260
 QLast Update : Tue Jan 17 03:59:22 2023
 Response via : Initial Calibration

Compound	R.T.	QIon	Response	Conc	Units	Dev(Min)

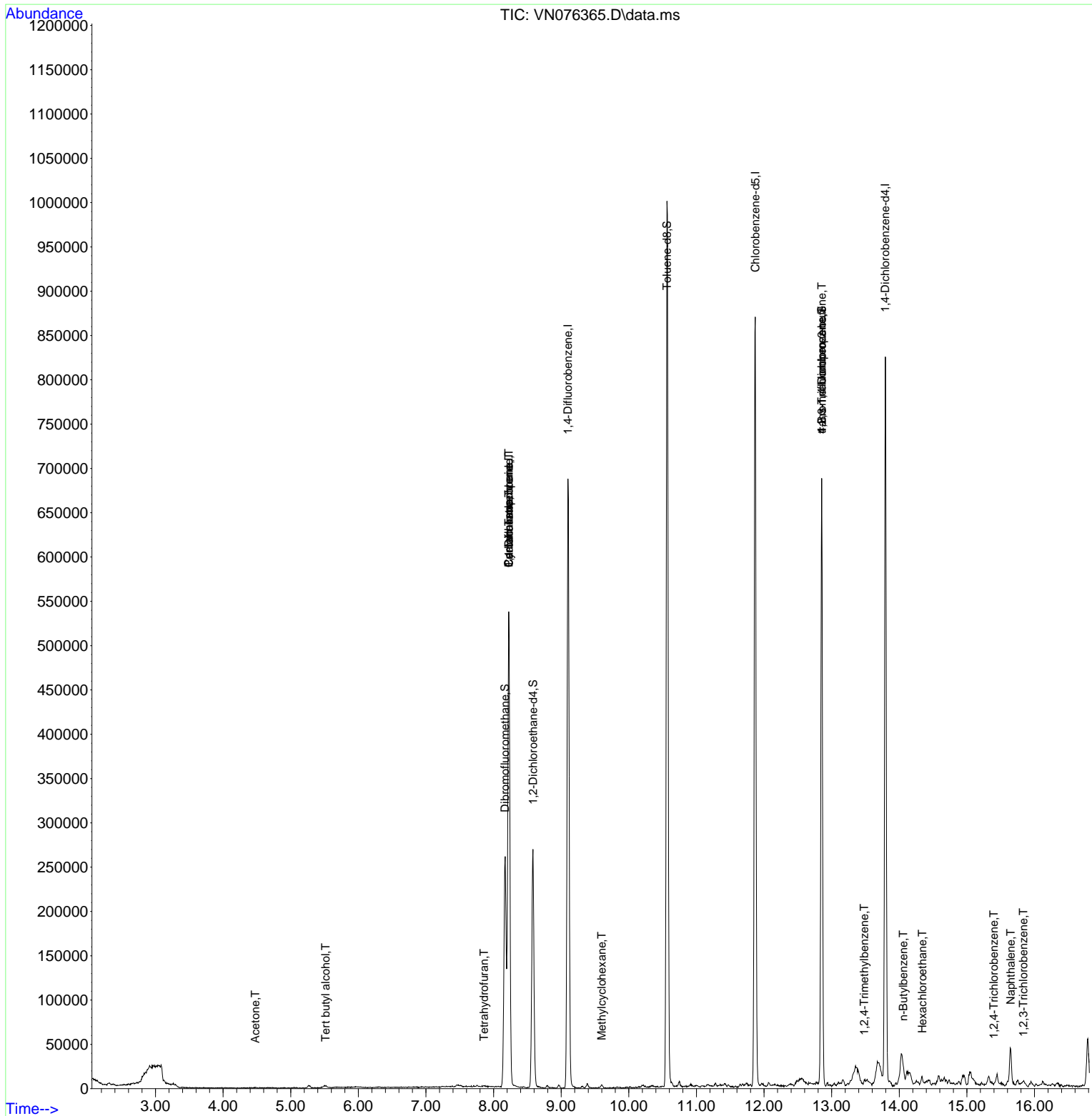
Internal Standards						
1) Pentafluorobenzene	8.224	168	402783	50.000	ug/l	0.00
34) 1,4-Difluorobenzene	9.100	114	625691	50.000	ug/l	0.00
63) Chlorobenzene-d5	11.870	117	525915	50.000	ug/l	0.00
72) 1,4-Dichlorobenzene-d4	13.794	152	226983	50.000	ug/l	0.00
System Monitoring Compounds						
33) 1,2-Dichloroethane-d4	8.582	65	218334	48.412	ug/l	0.00
Spiked Amount	50.000	Range 74 - 125	Recovery	=	96.820%	
35) Dibromofluoromethane	8.171	113	182553	46.642	ug/l	0.00
Spiked Amount	50.000	Range 75 - 124	Recovery	=	93.280%	
50) Toluene-d8	10.565	98	714494	49.430	ug/l	0.00
Spiked Amount	50.000	Range 86 - 113	Recovery	=	98.860%	
62) 4-Bromofluorobenzene	12.853	95	224989	47.679	ug/l	0.00
Spiked Amount	50.000	Range 83 - 123	Recovery	=	95.360%	
Target Compounds						
						Qvalue
11) Tert butyl alcohol	5.518	59	2161	3.582	ug/l #	72
16) Acetone	4.477	43	771	0.460	ug/l #	41
20) Methylene Chloride	5.271	84	2109	Below Cal	#	58
29) Tetrahydrofuran	7.859	42	498	0.365	ug/l #	46
31) Cyclohexane	8.224	56	8226	1.187	ug/l #	28
36) 1,1-Dichloropropene	8.224	75	29361	5.279	ug/l #	48
38) Carbon Tetrachloride	8.224	117	41022	6.614	ug/l #	15
39) Methylcyclohexane	9.600	83	1779	0.262	ug/l #	86
76) 1,2,3-Trichloropropane	12.853	75	120313	28.692	ug/l #	1
81) trans-1,4-Dichloro-2-b...	12.853	75	120313	88.192	ug/l #	11
84) 1,2,4-Trimethylbenzene	13.482	105	3459	0.234	ug/l	93
89) n-Butylbenzene	14.059	91	3165	0.267	ug/l #	70
90) Hexachloroethane	14.341	117	733	0.284	ug/l #	12
93) 1,2,4-Trichlorobenzene	15.400	180	202	1.355	ug/l #	1
95) Naphthalene	15.647	128	39929	5.100	ug/l	98
96) 1,2,3-Trichlorobenzene	15.835	180	261	1.221	ug/l #	34

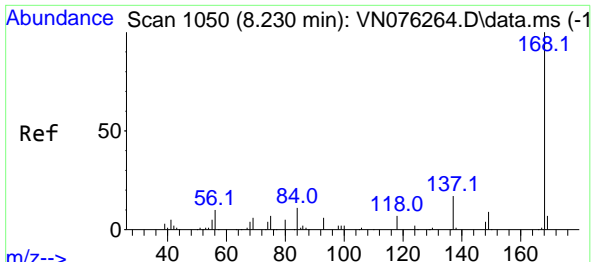
(#) = qualifier out of range (m) = manual integration (+) = signals summed

Data Path : Z:\voasrv\HPCHEM1\MSVOA_N\Data\VN012323\
 Data File : VN076365.D
 Acq On : 23 Jan 2023 14:36
 Operator : JC\MD
 Sample : 01234-01ME
 Misc : 5.04g/10mL/100uL/5.00mL/MSVOA_N/MEOH
 ALS Vial : 12 Sample Multiplier: 1

Instrument :
 MSVOA_N
 ClientSampleId :
 EO-02-11923

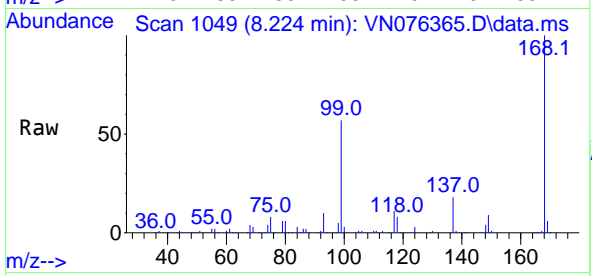
Quant Time: Jan 24 00:37:48 2023
 Quant Method : Z:\voasrv\HPCHEM1\MSVOA_N\methods\82N011623W.M
 Quant Title : SW846 8260
 QLast Update : Tue Jan 17 03:59:22 2023
 Response via : Initial Calibration



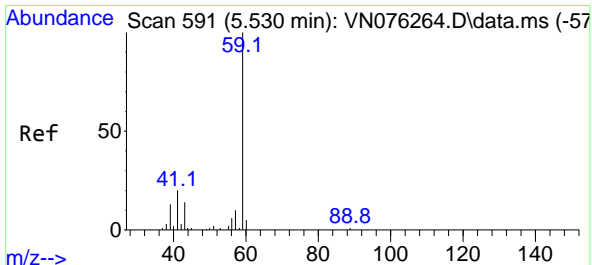
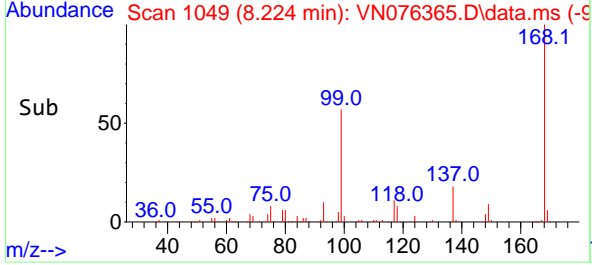
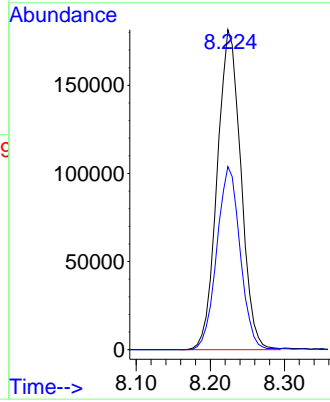


#1
 Pentafluorobenzene
 Concen: 50.000 ug/l
 RT: 8.224 min Scan# 1049
 Delta R.T. -0.006 min
 Lab File: VN076365.D
 Acq: 23 Jan 2023 14:36

Instrument : MSVOA_N
 Client Sample Id : EO-02-11923

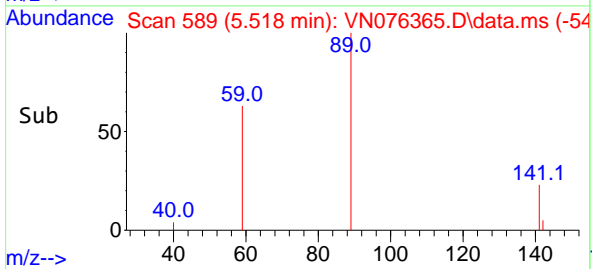
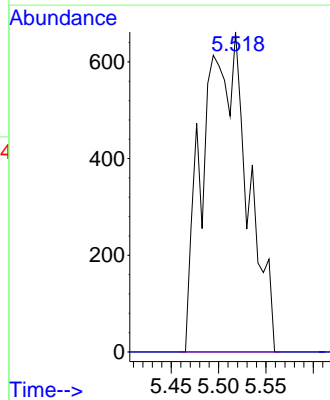
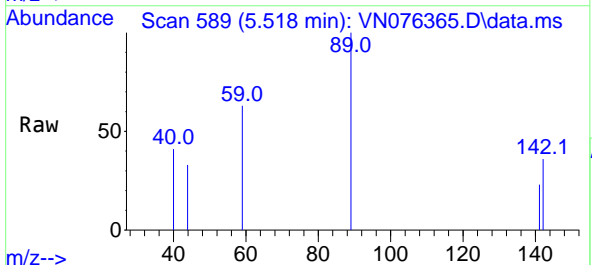


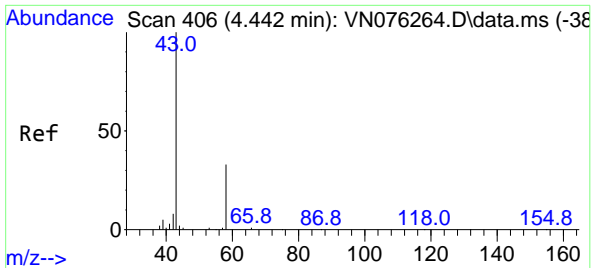
Tgt Ion:168 Resp: 402783
 Ion Ratio Lower Upper
 168 100
 99 57.2 41.6 62.4



#11
 Tert butyl alcohol
 Concen: 3.582 ug/l
 RT: 5.518 min Scan# 589
 Delta R.T. -0.012 min
 Lab File: VN076365.D
 Acq: 23 Jan 2023 14:36

Tgt Ion: 59 Resp: 2161
 Ion Ratio Lower Upper
 59 100
 57 0.0 8.5 12.7#

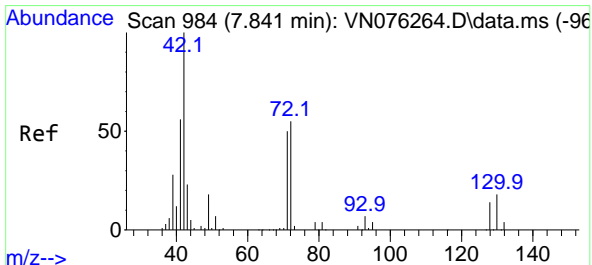
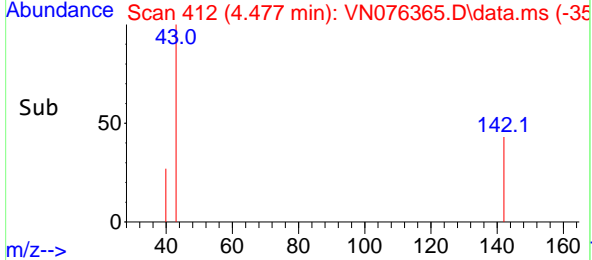
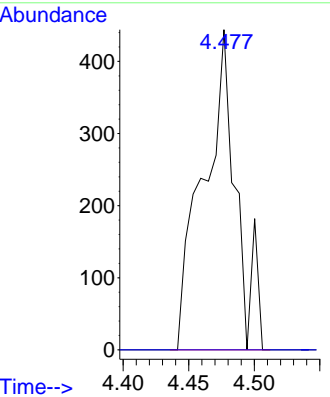
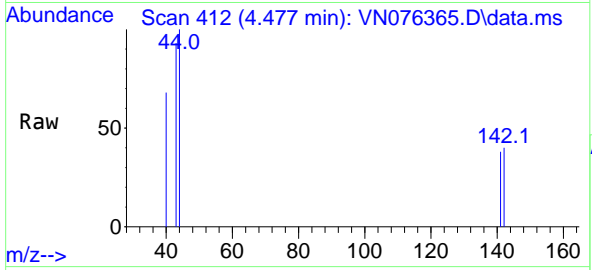




#16
 Acetone
 Concen: 0.460 ug/l
 RT: 4.477 min Scan# 412
 Delta R.T. 0.035 min
 Lab File: VN076365.D
 Acq: 23 Jan 2023 14:36

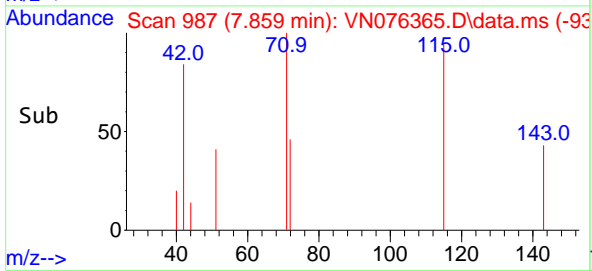
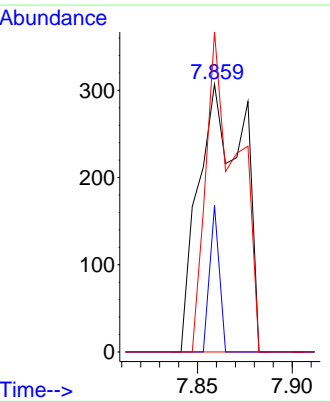
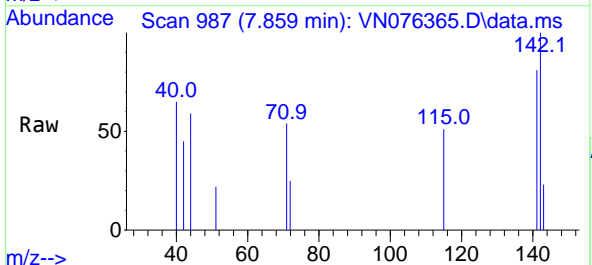
Instrument : MSVOA_N
 Client SampleId : EO-02-11923

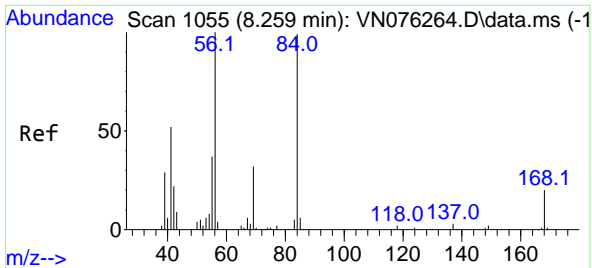
Tgt Ion: 43 Resp: 771
 Ion Ratio Lower Upper
 43 100
 58 0.0 26.7 40.1#



#29
 Tetrahydrofuran
 Concen: 0.365 ug/l
 RT: 7.859 min Scan# 987
 Delta R.T. 0.018 min
 Lab File: VN076365.D
 Acq: 23 Jan 2023 14:36

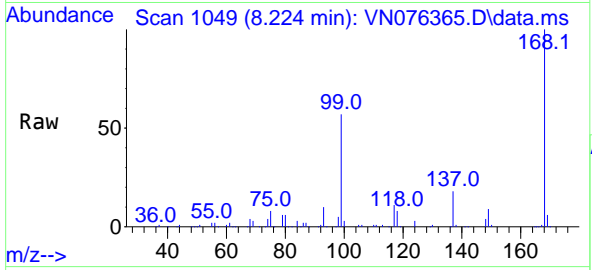
Tgt Ion: 42 Resp: 498
 Ion Ratio Lower Upper
 42 100
 72 11.8 44.0 66.0#
 71 84.9 41.1 61.7#



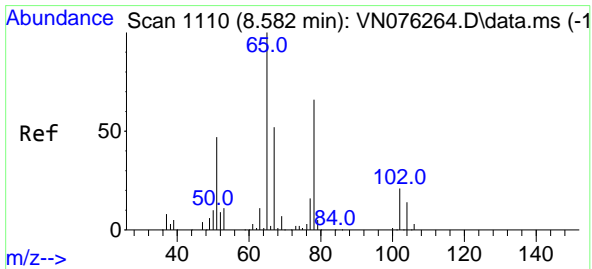
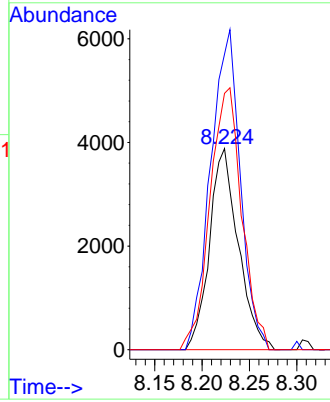
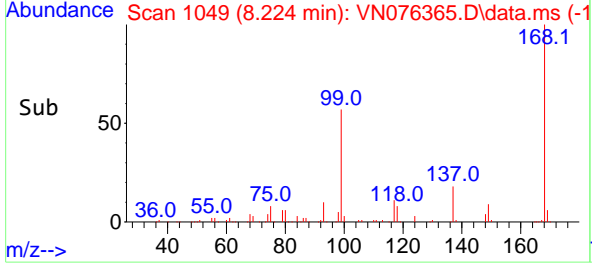


#31
 Cyclohexane
 Concen: 1.187 ug/l
 RT: 8.224 min Scan# 1049
 Delta R.T. -0.035 min
 Lab File: VN076365.D
 Acq: 23 Jan 2023 14:36

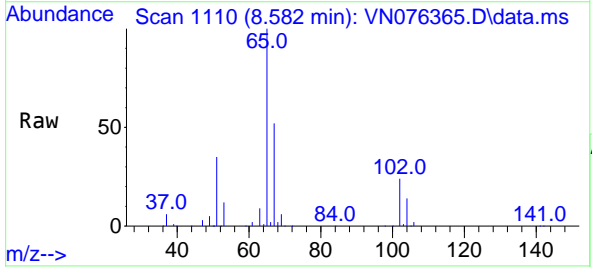
Instrument : MSVOA_N
 ClientSampleId : EO-02-11923



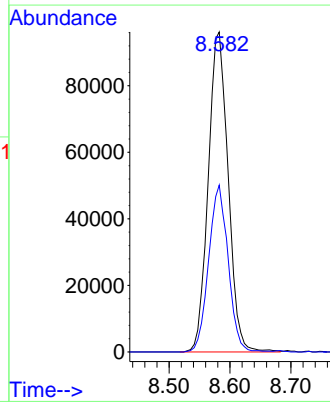
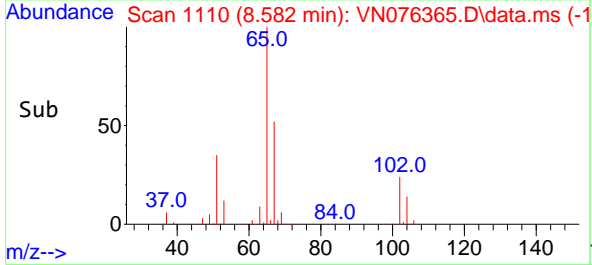
Tgt Ion: 56 Resp: 8226
 Ion Ratio Lower Upper
 56 100
 69 146.9 25.8 38.8#
 84 127.4 79.0 118.4#

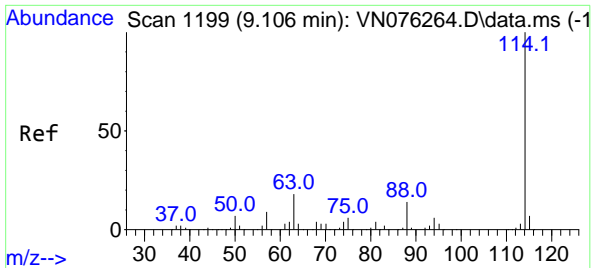


#33
 1,2-Dichloroethane-d4
 Concen: 48.412 ug/l
 RT: 8.582 min Scan# 1110
 Delta R.T. 0.000 min
 Lab File: VN076365.D
 Acq: 23 Jan 2023 14:36



Tgt Ion: 65 Resp: 218334
 Ion Ratio Lower Upper
 65 100
 67 51.1 0.0 104.6



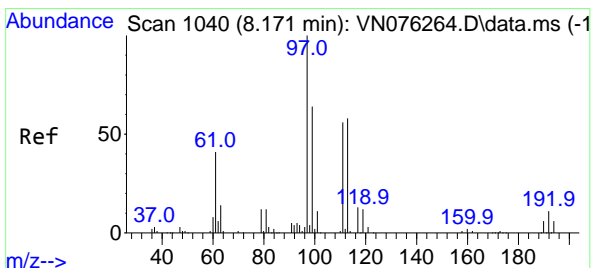
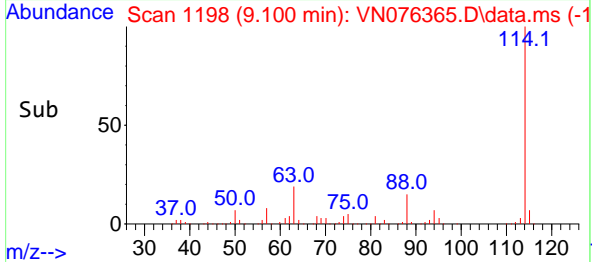
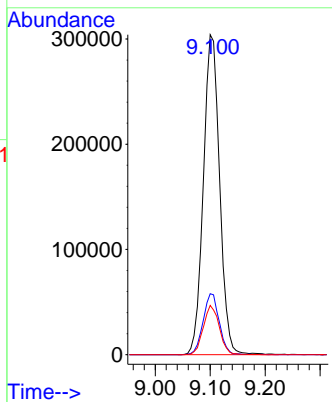
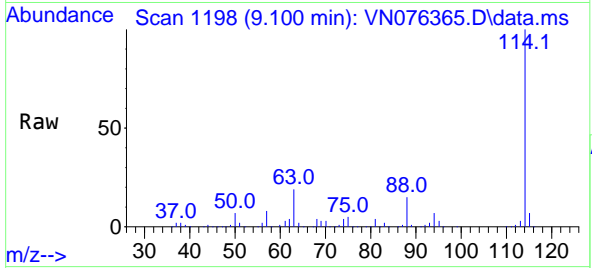


#34
 1,4-Difluorobenzene
 Concen: 50.000 ug/l
 RT: 9.100 min Scan# 1198
 Delta R.T. -0.006 min
 Lab File: VN076365.D
 Acq: 23 Jan 2023 14:36

Instrument : MSVOA_N
 ClientSampleId : EO-02-11923

Tgt Ion:114 Resp: 625691

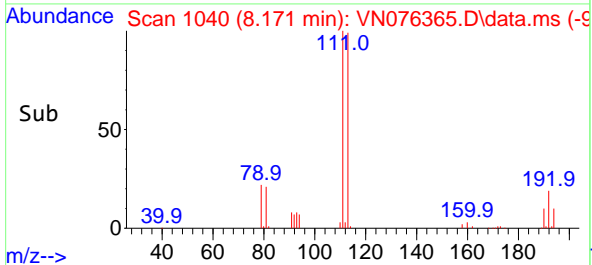
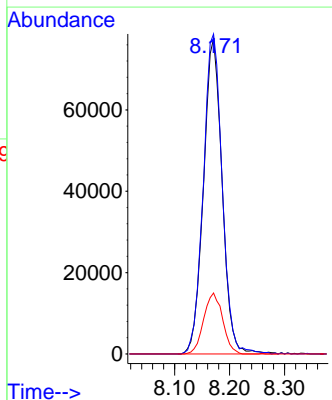
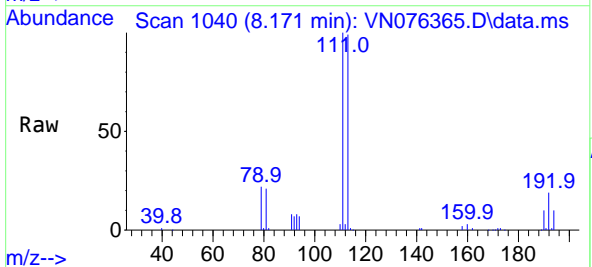
Ion	Ratio	Lower	Upper
114	100		
63	19.1	0.0	35.8
88	15.4	0.0	28.0

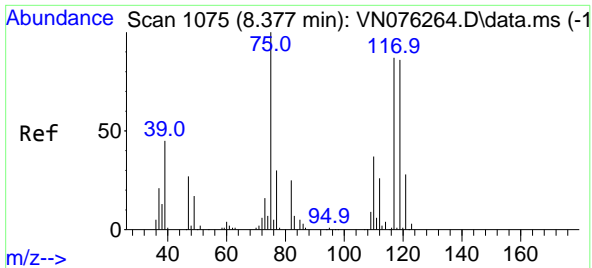


#35
 Dibromofluoromethane
 Concen: 46.642 ug/l
 RT: 8.171 min Scan# 1040
 Delta R.T. -0.000 min
 Lab File: VN076365.D
 Acq: 23 Jan 2023 14:36

Tgt Ion:113 Resp: 182553

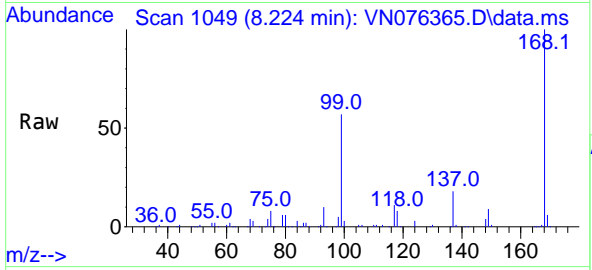
Ion	Ratio	Lower	Upper
113	100		
111	102.8	82.7	124.1
192	19.6	15.6	23.4



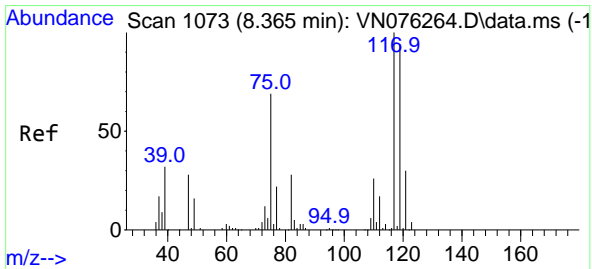
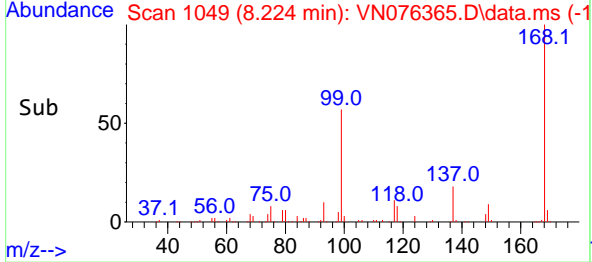
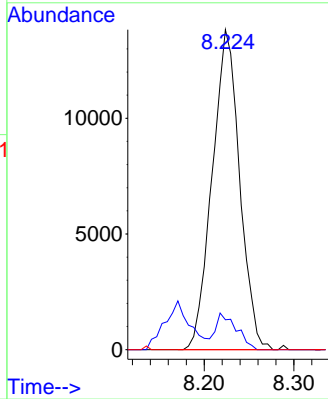


#36
 1,1-Dichloropropene
 Concen: 5.279 ug/l
 RT: 8.224 min Scan# 1049
 Delta R.T. -0.153 min
 Lab File: VN076365.D
 Acq: 23 Jan 2023 14:36

Instrument : MSVOA_N
 ClientSampleId : EO-02-11923

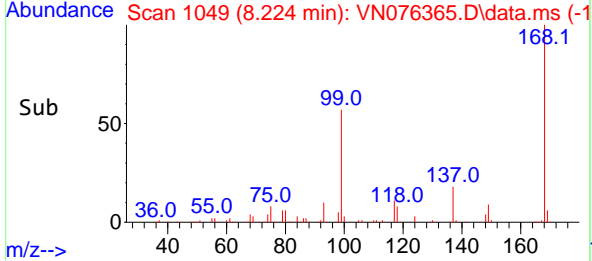
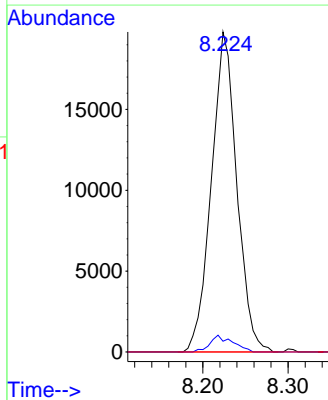
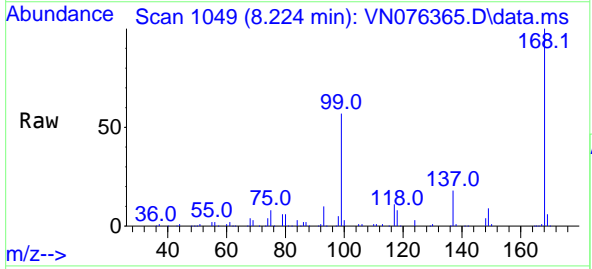


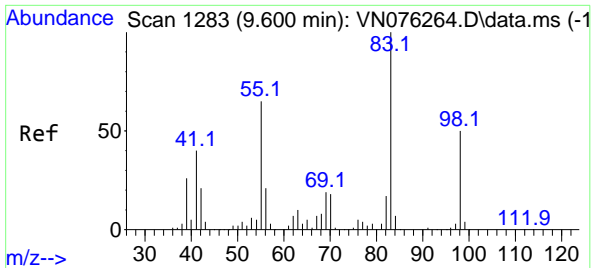
Tgt Ion: 75 Resp: 29361
 Ion Ratio Lower Upper
 75 100
 110 8.6 18.8 56.3#
 77 0.0 25.0 37.4#



#38
 Carbon Tetrachloride
 Concen: 6.614 ug/l
 RT: 8.224 min Scan# 1049
 Delta R.T. -0.141 min
 Lab File: VN076365.D
 Acq: 23 Jan 2023 14:36

Tgt Ion: 117 Resp: 41022
 Ion Ratio Lower Upper
 117 100
 119 3.3 75.4 113.0#
 121 0.0 24.2 36.2#



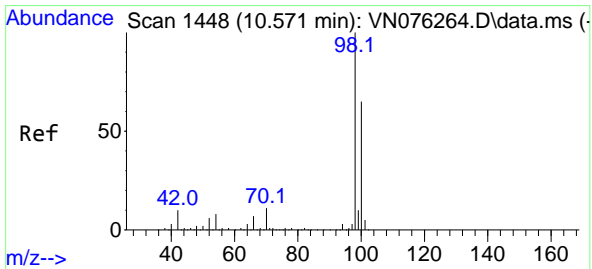
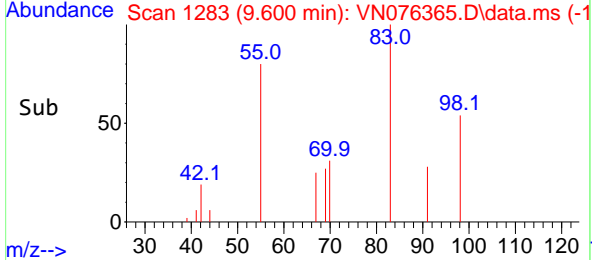
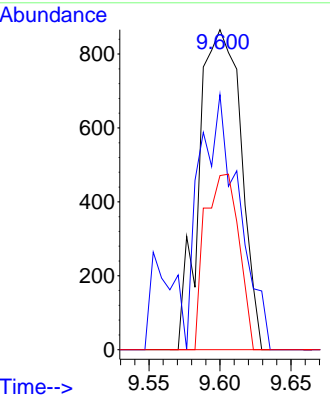
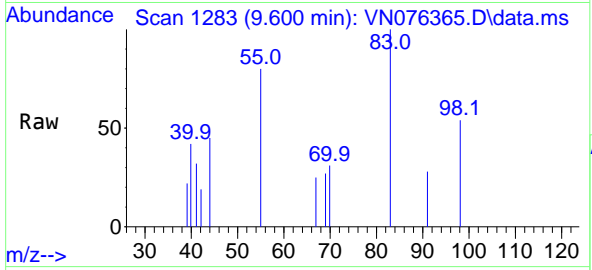


#39
 Methylcyclohexane
 Concen: 0.262 ug/l
 RT: 9.600 min Scan# 11
 Delta R.T. 0.000 min
 Lab File: VN076365.D
 Acq: 23 Jan 2023 14:36

Instrument : MSVOA_N
 ClientSampleId : EO-02-11923

Tgt Ion: 83 Resp: 1779

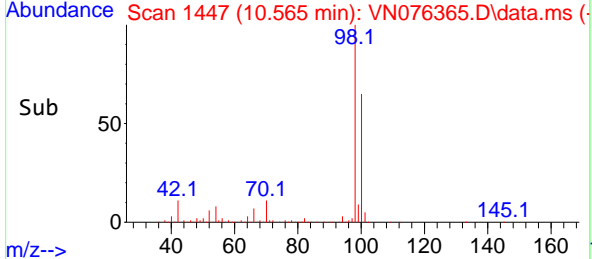
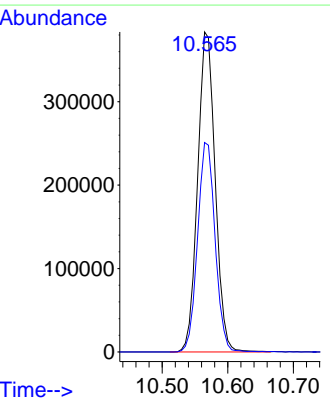
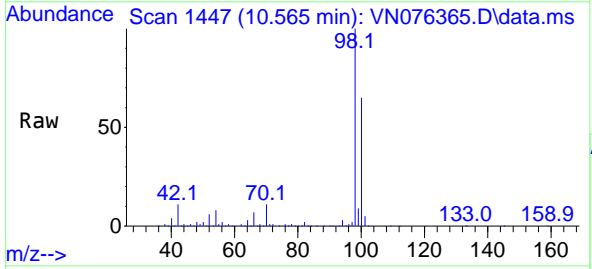
Ion	Ratio	Lower	Upper
83	100		
55	79.7	51.7	77.5#
98	54.4	40.0	60.0

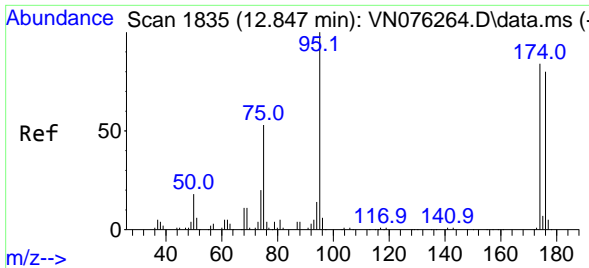


#50
 Toluene-d8
 Concen: 49.430 ug/l
 RT: 10.565 min Scan# 1447
 Delta R.T. -0.006 min
 Lab File: VN076365.D
 Acq: 23 Jan 2023 14:36

Tgt Ion: 98 Resp: 714494

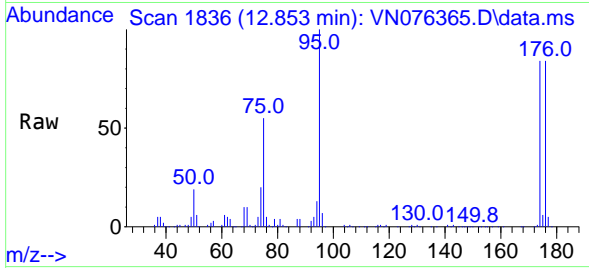
Ion	Ratio	Lower	Upper
98	100		
100	65.4	52.2	78.4



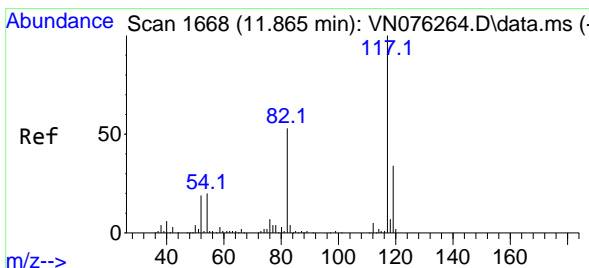
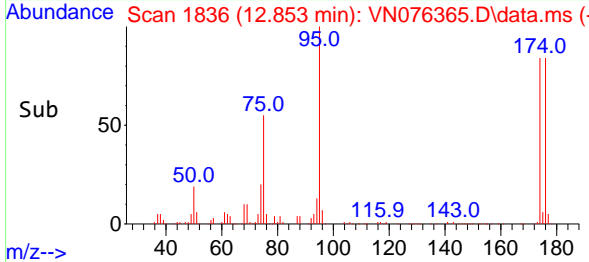
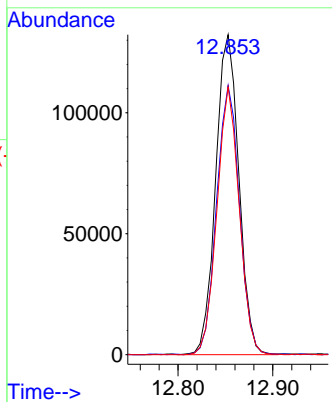


#62
 4-Bromofluorobenzene
 Concen: 47.679 ug/l
 RT: 12.853 min Scan# 1836
 Delta R.T. 0.006 min
 Lab File: VN076365.D
 Acq: 23 Jan 2023 14:36

Instrument : MSVOA_N
 ClientSampleId : EO-02-11923

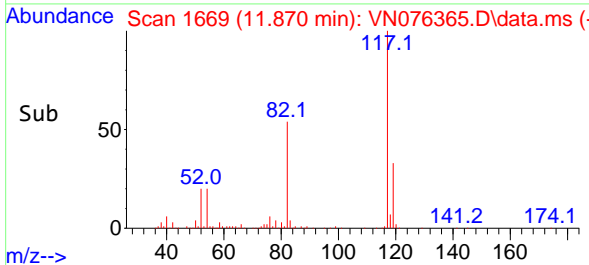
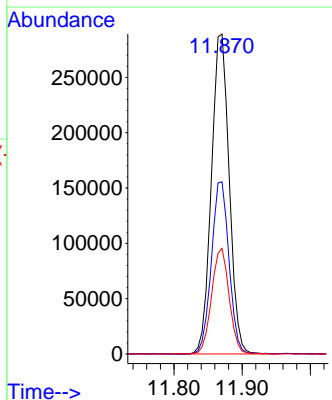
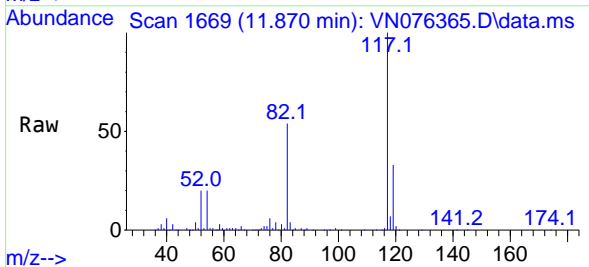


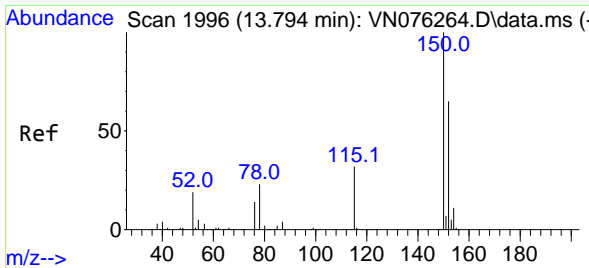
Tgt Ion: 95 Resp: 224989
 Ion Ratio Lower Upper
 95 100
 174 83.1 0.0 174.6
 176 80.3 0.0 167.8



#63
 Chlorobenzene-d5
 Concen: 50.000 ug/l
 RT: 11.870 min Scan# 1669
 Delta R.T. 0.005 min
 Lab File: VN076365.D
 Acq: 23 Jan 2023 14:36

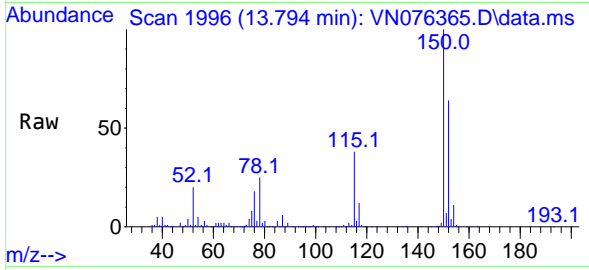
Tgt Ion: 117 Resp: 525915
 Ion Ratio Lower Upper
 117 100
 82 53.8 42.2 63.2
 119 33.0 26.9 40.3



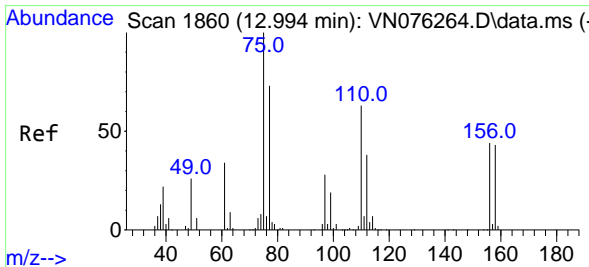
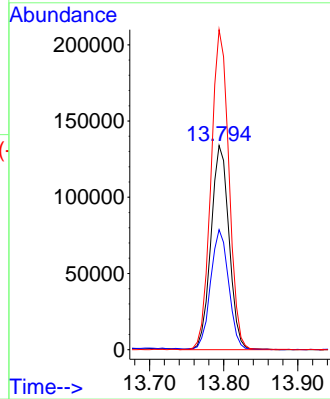
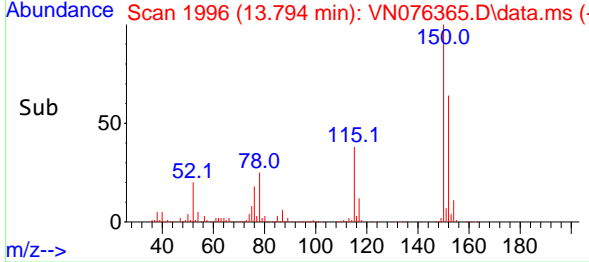


#72
 1,4-Dichlorobenzene-d4
 Concen: 50.000 ug/l
 RT: 13.794 min Scan# 1996
 Delta R.T. -0.000 min
 Lab File: VN076365.D
 Acq: 23 Jan 2023 14:36

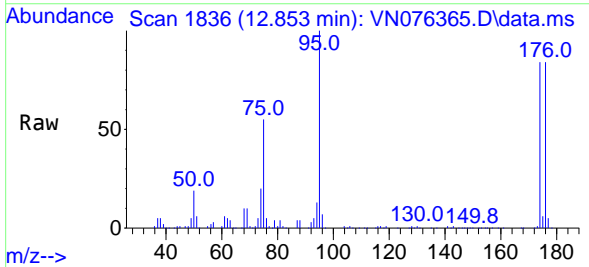
Instrument : MSVOA_N
 ClientSampleId : EO-02-11923



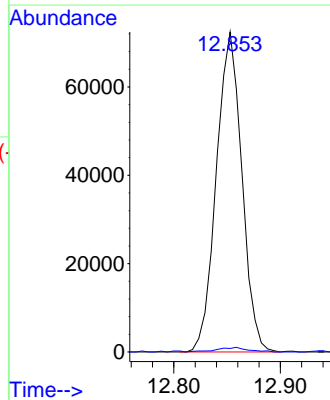
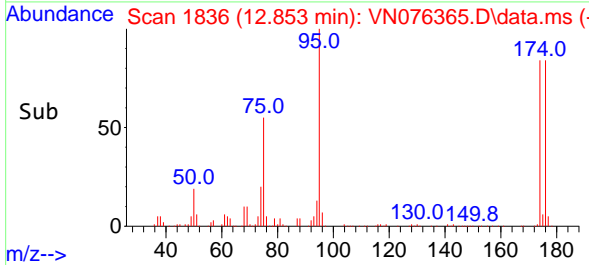
Tgt Ion:152 Resp: 226983
 Ion Ratio Lower Upper
 152 100
 115 58.9 29.6 88.9
 150 155.5 0.0 351.4

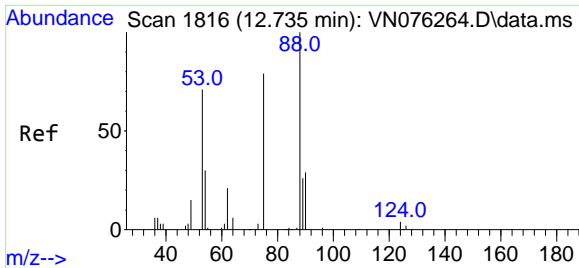


#76
 1,2,3-Trichloropropane
 Concen: 28.692 ug/l
 RT: 12.853 min Scan# 1836
 Delta R.T. -0.141 min
 Lab File: VN076365.D
 Acq: 23 Jan 2023 14:36



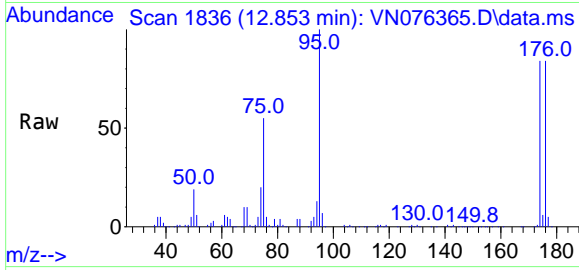
Tgt Ion: 75 Resp: 120313
 Ion Ratio Lower Upper
 75 100
 77 1.8 75.2 225.6#



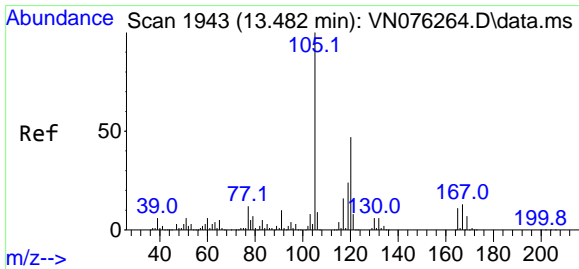
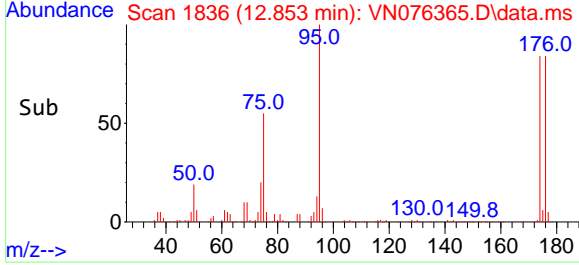
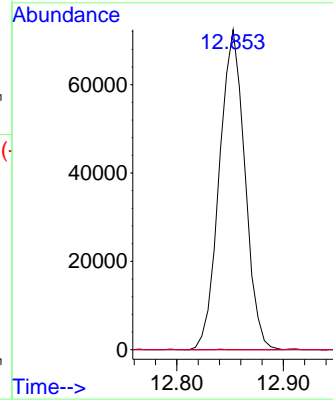


#81
 trans-1,4-Dichloro-2-butene
 Concen: 88.192 ug/l
 RT: 12.853 min Scan# 1836
 Delta R.T. 0.118 min
 Lab File: VN076365.D
 Acq: 23 Jan 2023 14:36

Instrument : MSVOA_N
 ClientSampleId : EO-02-11923

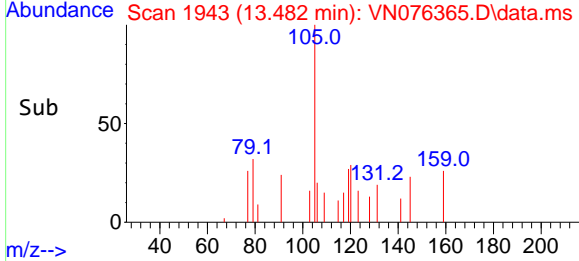
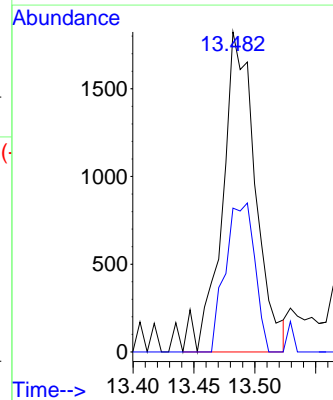
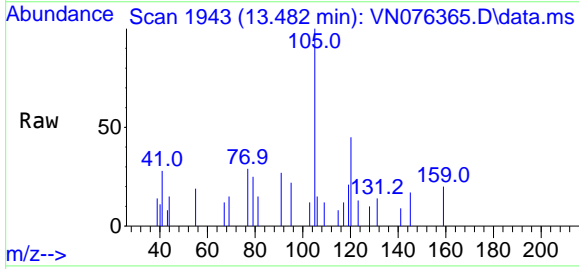


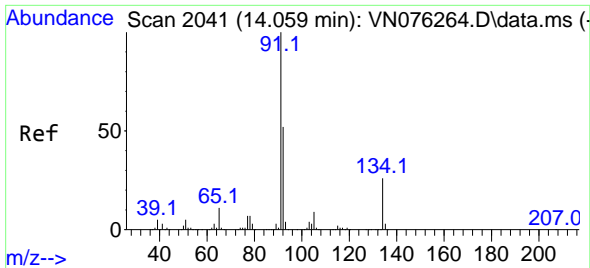
Tgt Ion: 75 Resp: 120313
 Ion Ratio Lower Upper
 75 100
 53 0.0 75.8 113.8#
 89 0.0 37.0 55.6#



#84
 1,2,4-Trimethylbenzene
 Concen: 0.234 ug/l
 RT: 13.482 min Scan# 1943
 Delta R.T. 0.000 min
 Lab File: VN076365.D
 Acq: 23 Jan 2023 14:36

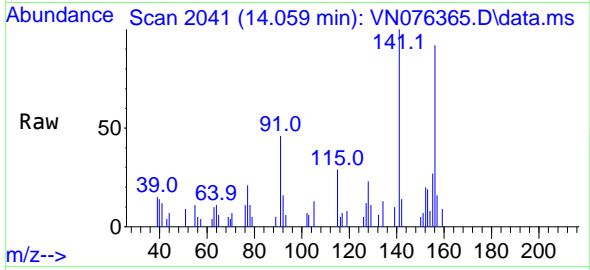
Tgt Ion: 105 Resp: 3459
 Ion Ratio Lower Upper
 105 100
 120 41.0 22.9 68.5





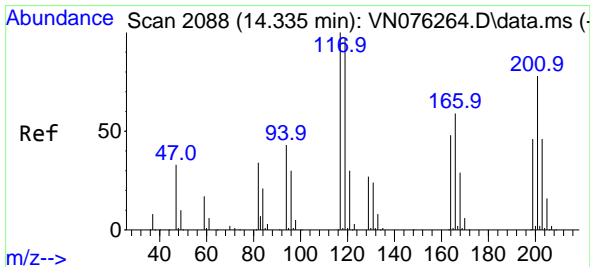
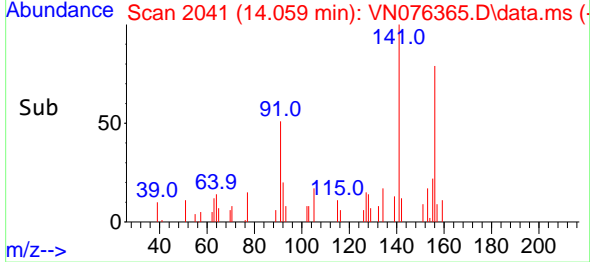
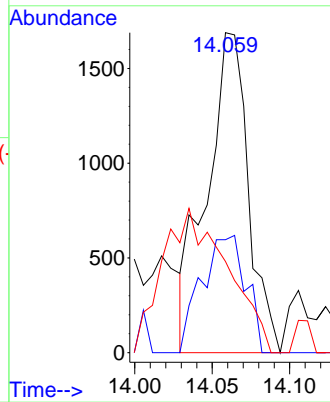
#89
 n-Butylbenzene
 Concen: 0.267 ug/l
 RT: 14.059 min Scan# 2041
 Delta R.T. -0.000 min
 Lab File: VN076365.D
 Acq: 23 Jan 2023 14:36

Instrument : MSVOA_N
 ClientSampleId : EO-02-11923



Tgt Ion: 91 Resp: 3165

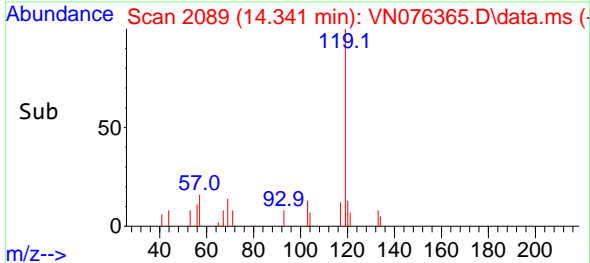
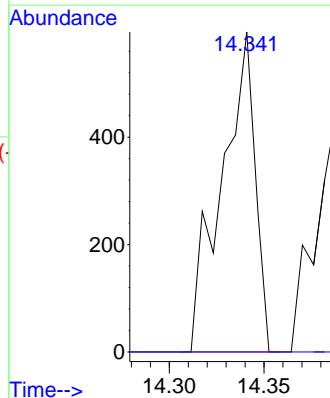
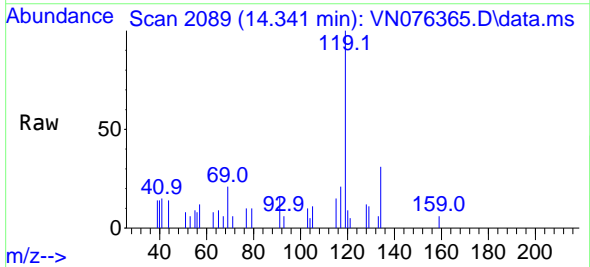
Ion	Ratio	Lower	Upper
91	100		
92	38.8	26.3	78.9
134	0.0	13.2	39.5#

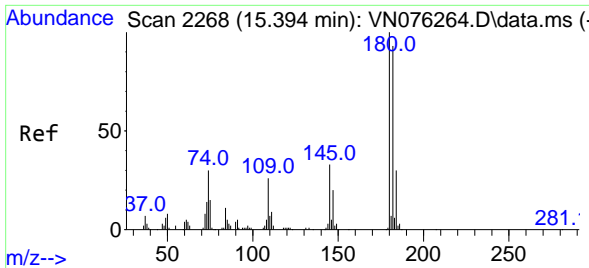


#90
 Hexachloroethane
 Concen: 0.284 ug/l
 RT: 14.341 min Scan# 2089
 Delta R.T. 0.006 min
 Lab File: VN076365.D
 Acq: 23 Jan 2023 14:36

Tgt Ion: 117 Resp: 733

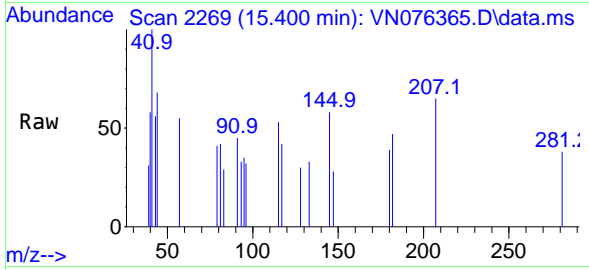
Ion	Ratio	Lower	Upper
117	100		
201	0.0	37.3	111.9#



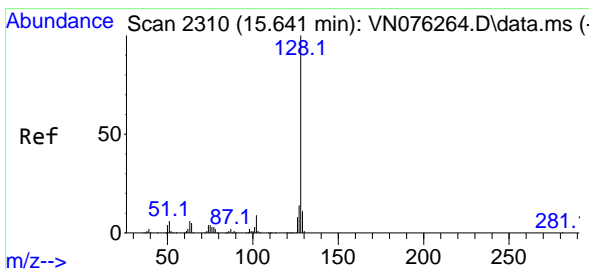
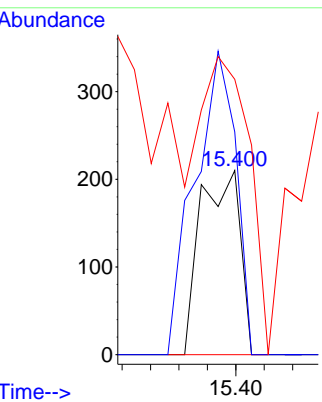
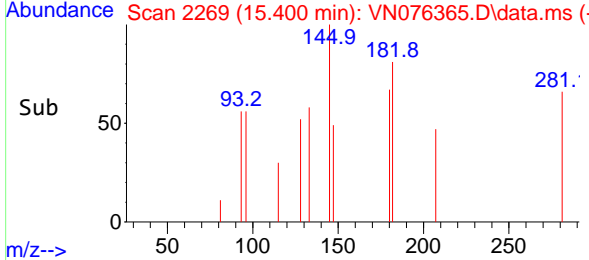


#93
 1,2,4-Trichlorobenzene
 Concen: 1.355 ug/l
 RT: 15.400 min Scan# 21
 Delta R.T. 0.006 min
 Lab File: VN076365.D
 Acq: 23 Jan 2023 14:36

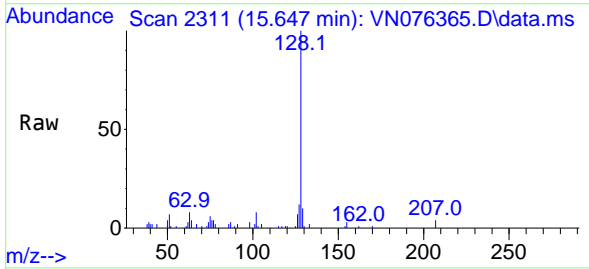
Instrument : MSVOA_N
 Client Sample Id : EO-02-11923



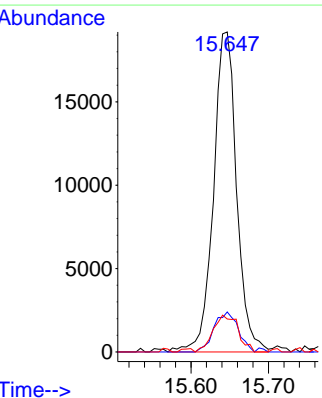
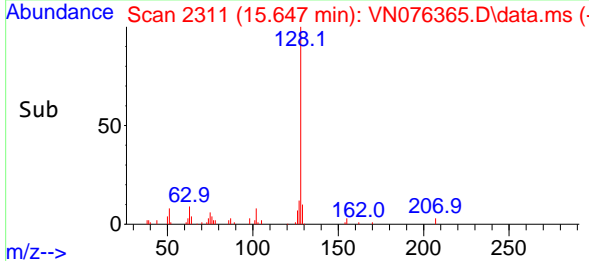
Tgt Ion:180 Resp: 202
 Ion Ratio Lower Upper
 180 100
 182 172.3 47.0 141.2#
 145 204.5 15.2 45.5#

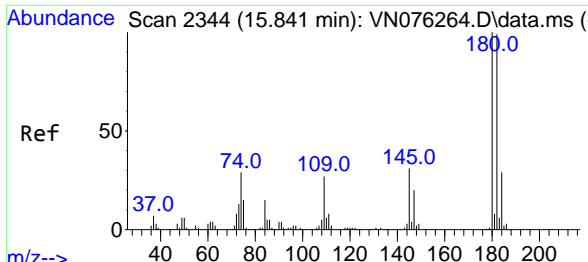


#95
 Naphthalene
 Concen: 5.100 ug/l
 RT: 15.647 min Scan# 2311
 Delta R.T. 0.006 min
 Lab File: VN076365.D
 Acq: 23 Jan 2023 14:36



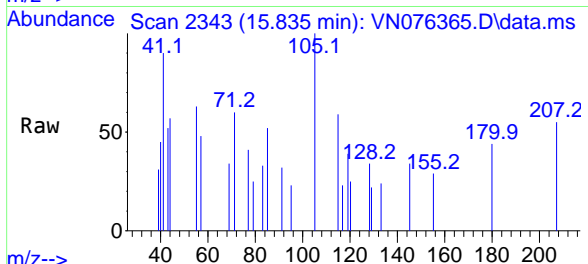
Tgt Ion:128 Resp: 39929
 Ion Ratio Lower Upper
 128 100
 127 13.0 10.3 15.5
 129 12.5 8.6 13.0





#96
 1,2,3-Trichlorobenzene
 Concen: 1.221 ug/l
 RT: 15.835 min Scan# 21
 Delta R.T. -0.006 min
 Lab File: VN076365.D
 Acq: 23 Jan 2023 14:36

Instrument :
 MSVOA_N
 ClientSampleId :
 EO-02-11923



Tgt Ion:180 Resp: 261

Ion	Ratio	Lower	Upper
180	100		
182	27.6	47.5	142.5#
145	0.0	15.9	47.6#

