

Data Path : Z:\voasrv\HPCHEM1\MSVOA_N\Data\VN012521\
 Data File : VN065587.D
 Acq On : 25 Jan 2021 19:24
 Operator : JC/MD
 Sample : M1157-04
 Misc : 5.00mL/MSVOA_N/WATER
 ALS Vial : 23 Sample Multiplier: 1

Instrument :
 MSVOA_N
 ClientSampled :

Quant Time: Jan 26 01:50:01 2021
 Quant Method : Z:\voasrv\HPCHEM1\MSVOA_N\methods\82N012521W.M
 Quant Title : SW846 8260
 QLast Update : Mon Jan 25 13:47:28 2021
 Response via : Initial Calibration

Compound	R.T.	QIon	Response	Conc	Units	Dev(Min)

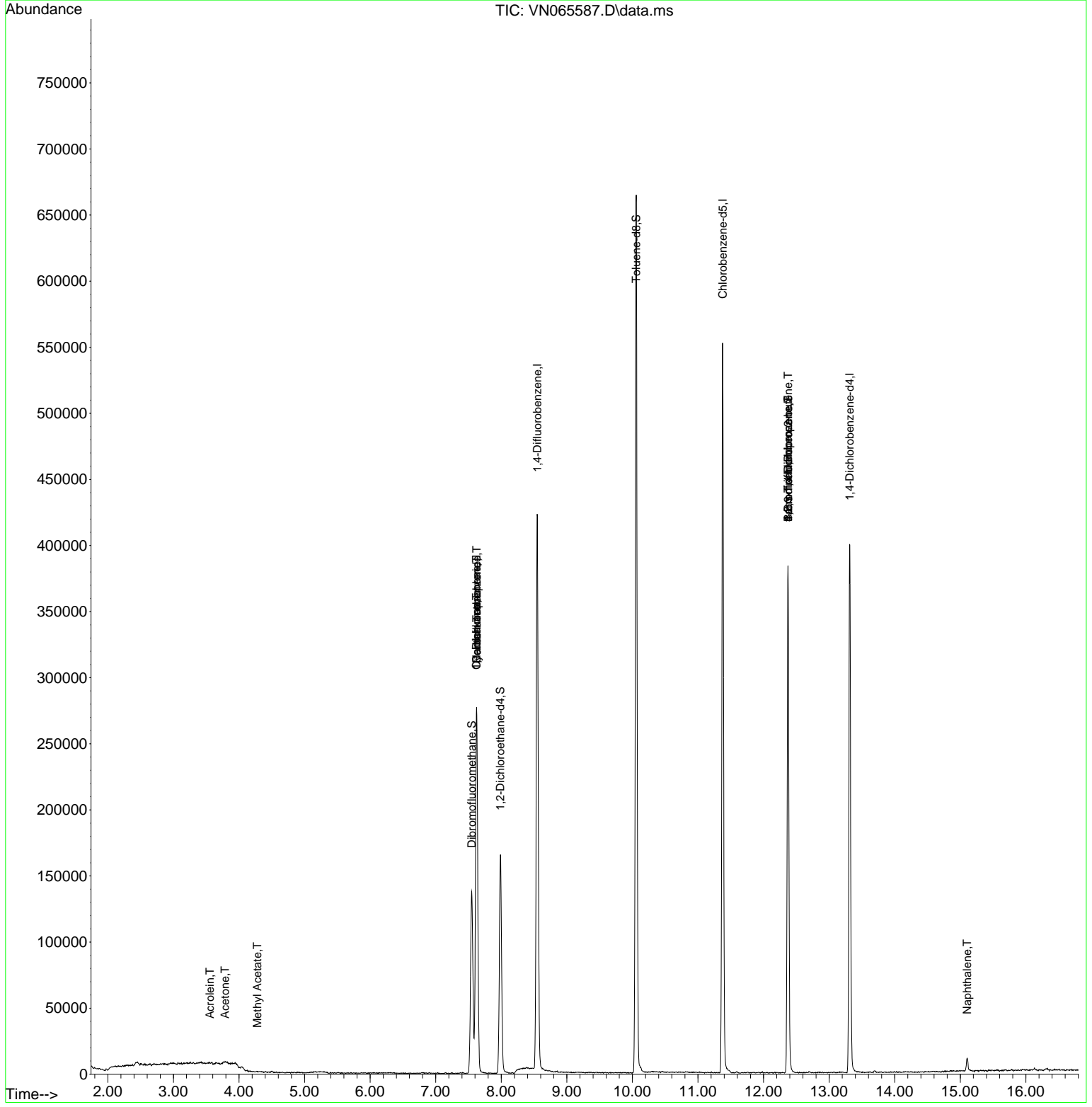
Internal Standards						
1) Pentafluorobenzene	7.624	168	225115	50.00	ug/l	0.00
34) 1,4-Difluorobenzene	8.550	114	384251	50.00	ug/l	0.00
63) Chlorobenzene-d5	11.376	117	330033	50.00	ug/l	0.00
72) 1,4-Dichlorobenzene-d4	13.315	152	115903	50.00	ug/l	0.00
System Monitoring Compounds						
33) 1,2-Dichloroethane-d4	7.987	65	140094	47.30	ug/l	0.00
Spiked Amount	50.000	Range 61 - 141	Recovery =	94.60%		
35) Dibromofluoromethane	7.550	113	112711	49.50	ug/l	0.00
Spiked Amount	50.000	Range 69 - 133	Recovery =	99.00%		
50) Toluene-d8	10.058	98	479093	53.53	ug/l	0.00
Spiked Amount	50.000	Range 65 - 126	Recovery =	107.06%		
62) 4-Bromofluorobenzene	12.373	95	156163	48.45	ug/l	0.00
Spiked Amount	50.000	Range 58 - 135	Recovery =	96.90%		
Target Compounds						
						Qvalue
13) Acrolein	3.557	56	541	19.13	ug/l #	68
16) Acetone	3.785	43	2292	1.99	ug/l	94
18) Methyl Acetate	4.280	43	926	0.29	ug/l #	51
31) Cyclohexane	7.621	56	4692	0.84	ug/l #	1
36) 1,1-Dichloropropene	7.621	75	18804	4.86	ug/l #	47
38) Carbon Tetrachloride	7.624	117	21670	6.81	ug/l #	16
71) Bromoform	12.373	173	722	0.43	ug/l #	1
76) 1,2,3-Trichloropropane	12.373	75	73320	24.19	ug/l #	100
81) trans-1,4-Dichloro-2-b...	12.373	75	73320	61.96	ug/l #	12
95) Naphthalene	15.106	128	10021	4.69	ug/l	97

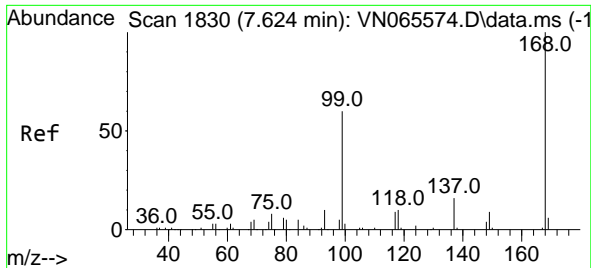
(#) = qualifier out of range (m) = manual integration (+) = signals summed

Data Path : Z:\voasrv\HPCHEM1\MSVOA_N\Data\VN012521\
 Data File : VN065587.D
 Acq On : 25 Jan 2021 19:24
 Operator : JC/MD
 Sample : M1157-04
 Misc : 5.00mL/MSVOA_N/WATER
 ALS Vial : 23 Sample Multiplier: 1

Instrument :
 MSVOA_N
 ClientSampled :

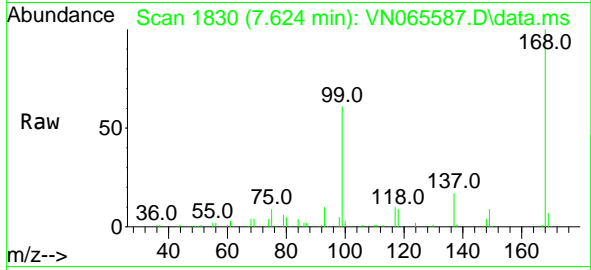
Quant Time: Jan 26 01:50:01 2021
 Quant Method : Z:\voasrv\HPCHEM1\MSVOA_N\methods\82N012521W.M
 Quant Title : SW846 8260
 QLast Update : Mon Jan 25 13:47:28 2021
 Response via : Initial Calibration



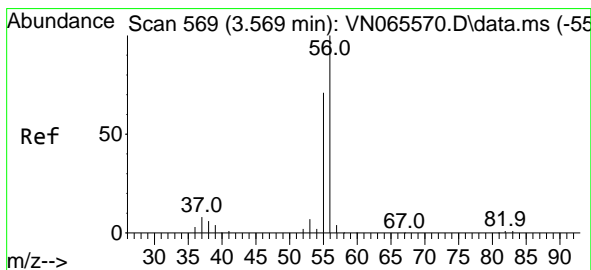
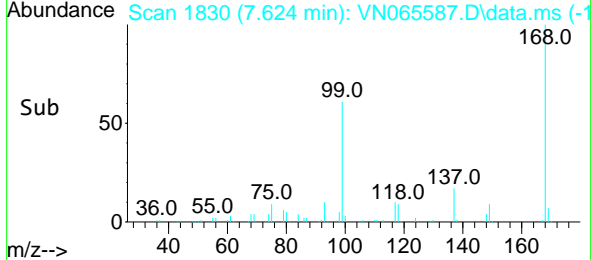
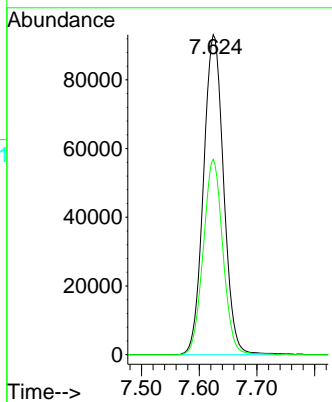


#1
 Pentafluorobenzene
 Concen: 50.00 ug/l
 RT: 7.624 min Scan# 1830
 Delta R.T. 0.000 min
 Lab File: VN065587.D
 Acq: 25 Jan 2021 19:24

Instrument :
 MSVOA_N
 ClientSampled :

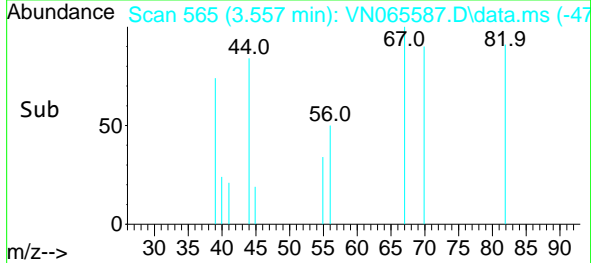
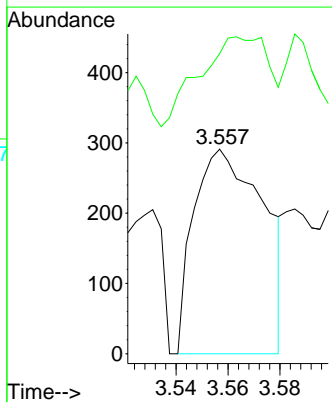
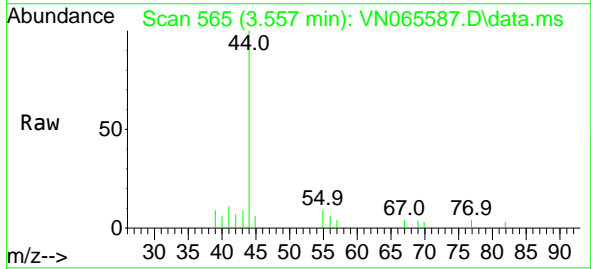


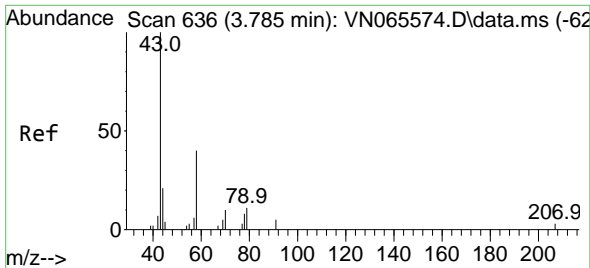
Tgt Ion:168 Resp: 225115
 Ion Ratio Lower Upper
 168 100
 99 61.0 42.6 63.8



#13
 Acrolein
 Concen: 19.13 ug/l
 RT: 3.557 min Scan# 565
 Delta R.T. -0.012 min
 Lab File: VN065587.D
 Acq: 25 Jan 2021 19:24

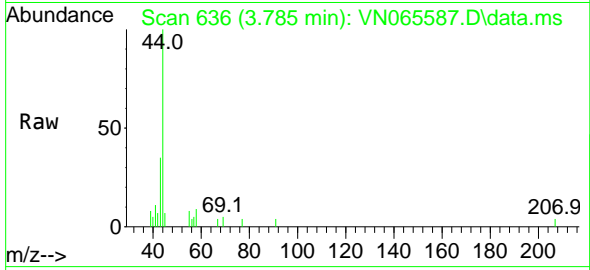
Tgt Ion: 56 Resp: 541
 Ion Ratio Lower Upper
 56 100
 55 43.8 56.0 84.0#



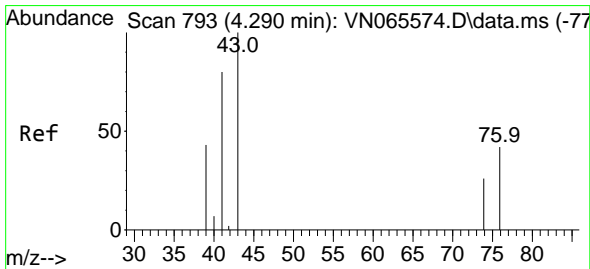
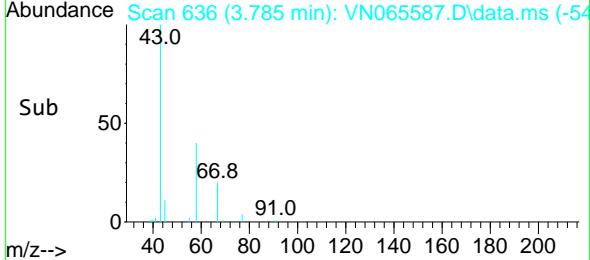
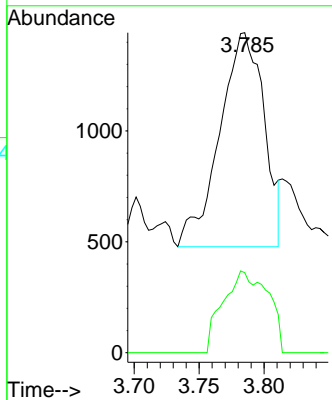


#16
 Acetone
 Concen: 1.99 ug/l
 RT: 3.785 min Scan# 636
 Delta R.T. 0.003 min
 Lab File: VN065587.D
 Acq: 25 Jan 2021 19:24

Instrument :
 MSVOA_N
 ClientSampled :

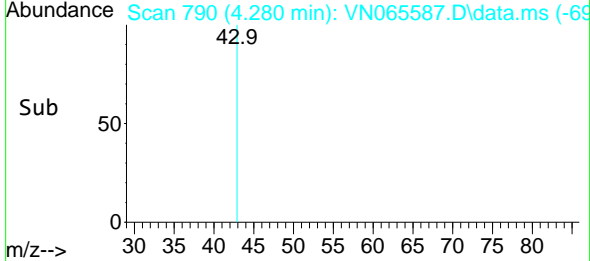
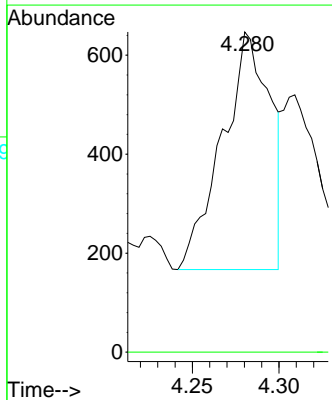
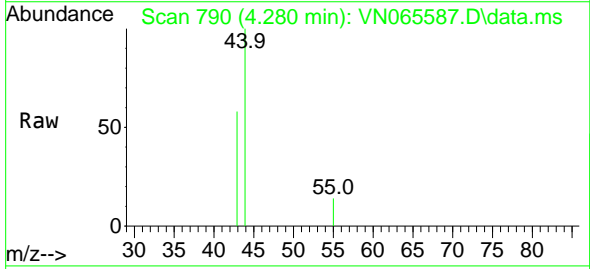


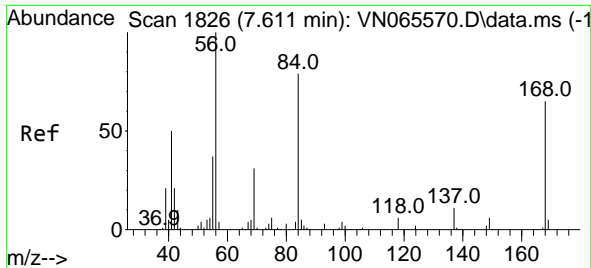
Tgt Ion: 43 Resp: 2292
 Ion Ratio Lower Upper
 43 100
 58 37.4 27.0 40.6



#18
 Methyl Acetate
 Concen: 0.29 ug/l
 RT: 4.280 min Scan# 790
 Delta R.T. -0.003 min
 Lab File: VN065587.D
 Acq: 25 Jan 2021 19:24

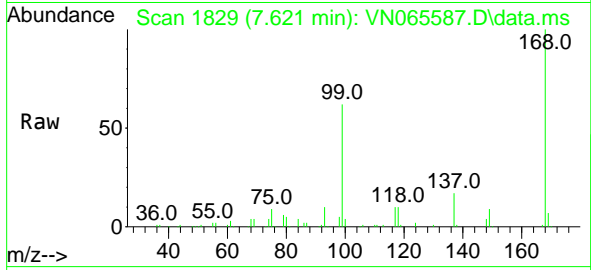
Tgt Ion: 43 Resp: 926
 Ion Ratio Lower Upper
 43 100
 74 0.0 19.5 29.3#



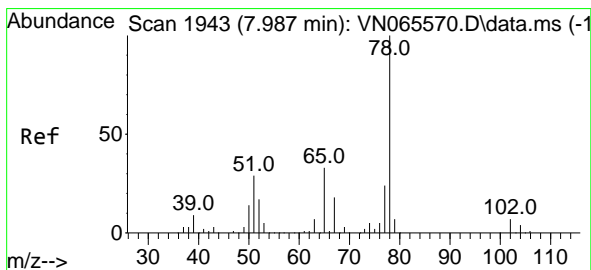
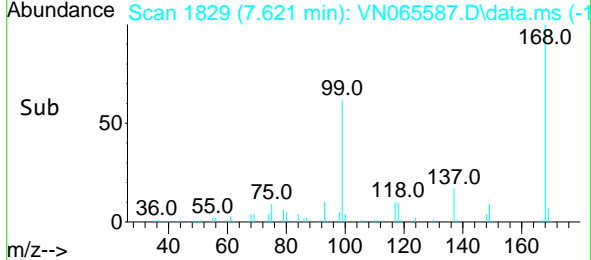
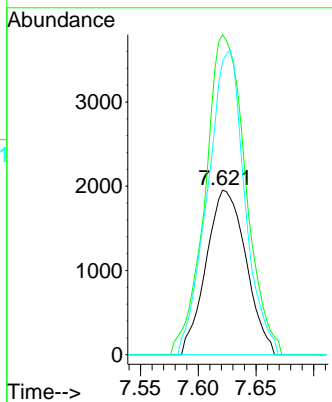


#31
 Cyclohexane
 Concen: 0.84 ug/l
 RT: 7.621 min Scan# 1829
 Delta R.T. 0.010 min
 Lab File: VN065587.D
 Acq: 25 Jan 2021 19:24

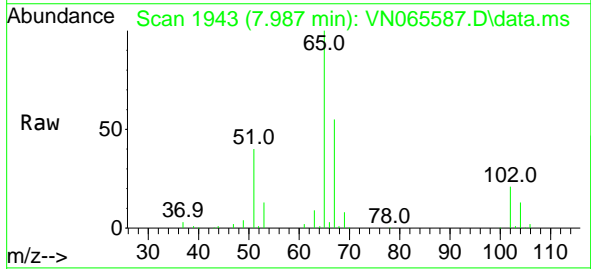
Instrument :
 MSVOA_N
 ClientSampled :



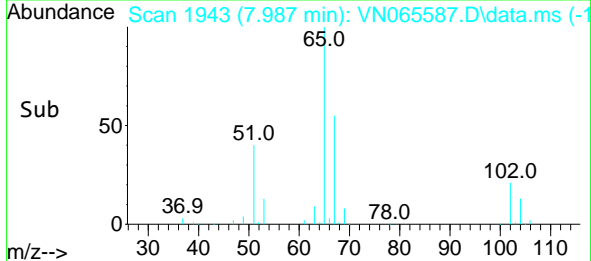
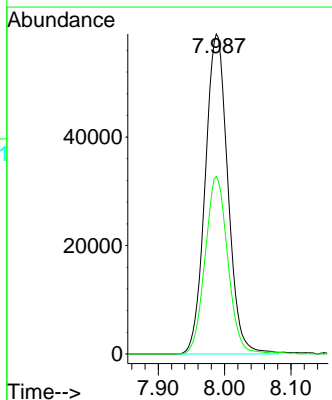
Tgt Ion: 56 Resp: 4692
 Ion Ratio Lower Upper
 56 100
 69 186.0 26.6 39.8#
 84 178.1 70.4 105.6#

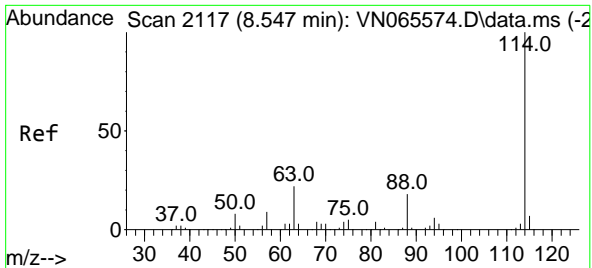


#33
 1,2-Dichloroethane-d4
 Concen: 47.30 ug/l
 RT: 7.987 min Scan# 1943
 Delta R.T. 0.000 min
 Lab File: VN065587.D
 Acq: 25 Jan 2021 19:24



Tgt Ion: 65 Resp: 140094
 Ion Ratio Lower Upper
 65 100
 67 55.4 0.0 107.2

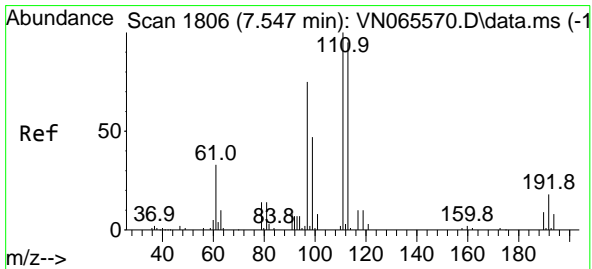
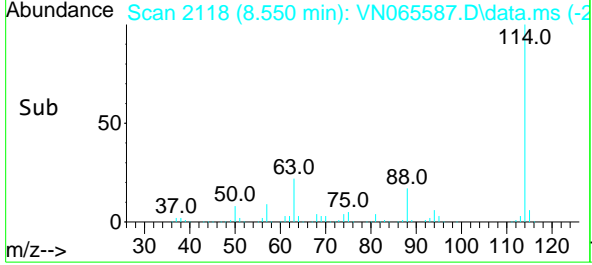
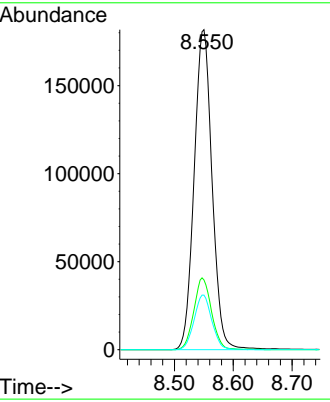
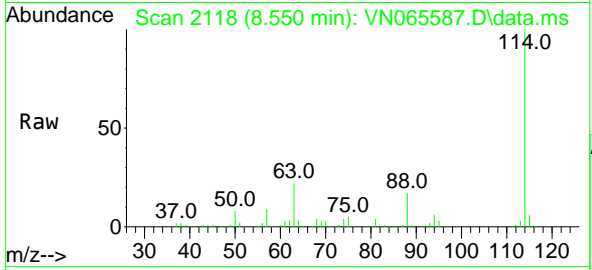




#34
 1,4-Difluorobenzene
 Concen: 50.00 ug/l
 RT: 8.550 min Scan# 2118
 Delta R.T. 0.000 min
 Lab File: VN065587.D
 Acq: 25 Jan 2021 19:24

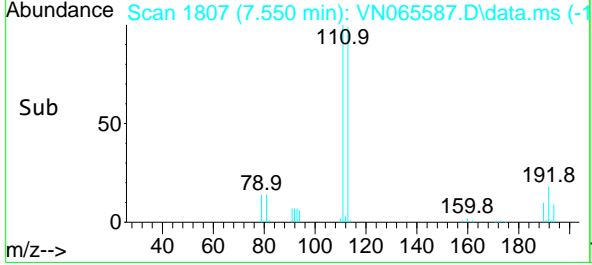
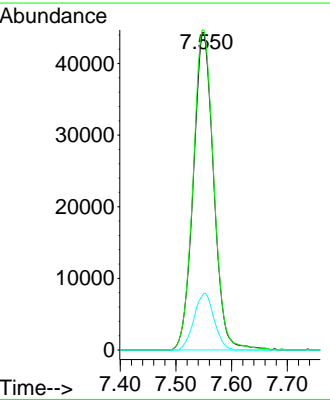
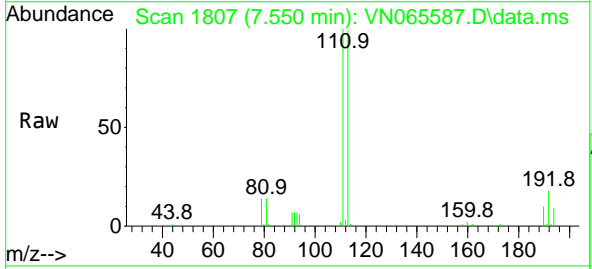
Instrument :
 MSVOA_N
 ClientSampled :

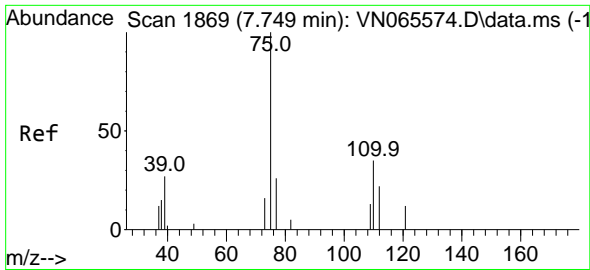
Tgt Ion	Resp	Lower	Upper
114	384251		
63	21.8	0.0	38.6
88	17.0	0.0	30.6



#35
 Dibromofluoromethane
 Concen: 49.50 ug/l
 RT: 7.550 min Scan# 1807
 Delta R.T. 0.003 min
 Lab File: VN065587.D
 Acq: 25 Jan 2021 19:24

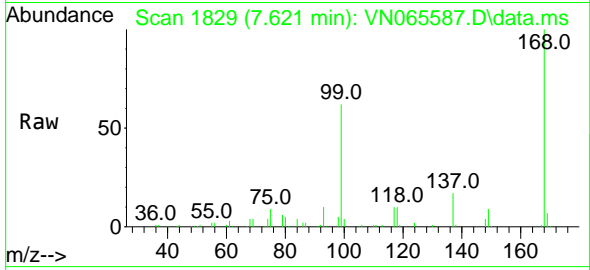
Tgt Ion	Resp	Lower	Upper
113	112711		
111	102.3	82.2	123.2
192	17.6	15.4	23.0



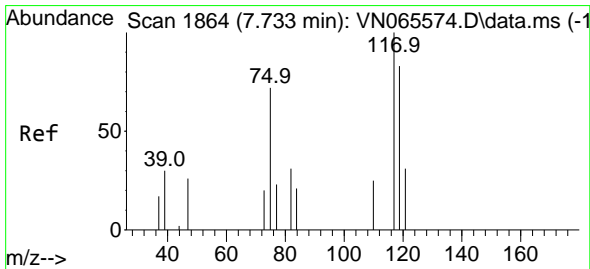
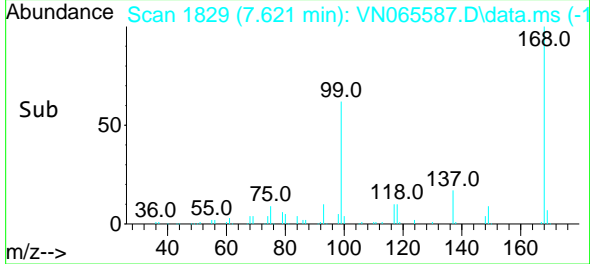
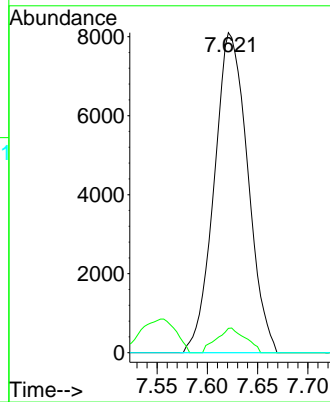


#36
 1,1-Dichloropropene
 Concen: 4.86 ug/l
 RT: 7.621 min Scan# 1829
 Delta R.T. -0.128 min
 Lab File: VN065587.D
 Acq: 25 Jan 2021 19:24

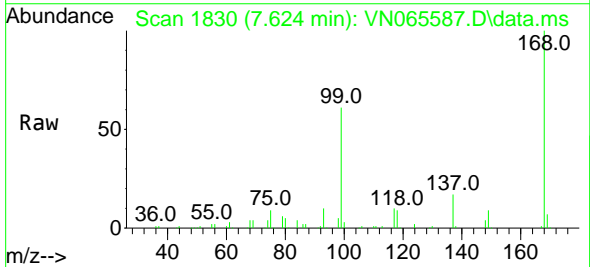
Instrument :
 MSVOA_N
 ClientSampled :



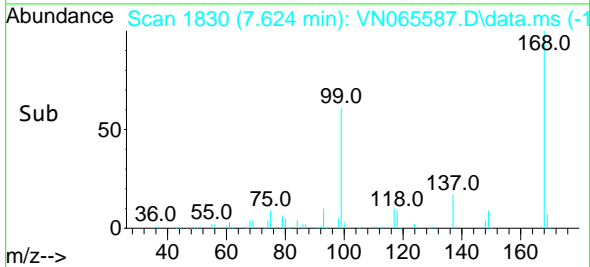
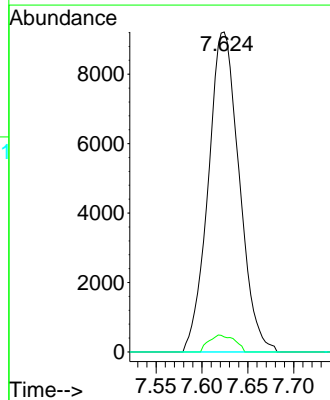
Tgt Ion: 75 Resp: 18804
 Ion Ratio Lower Upper
 75 100
 110 6.6 18.2 54.6#
 77 0.0 24.9 37.3#

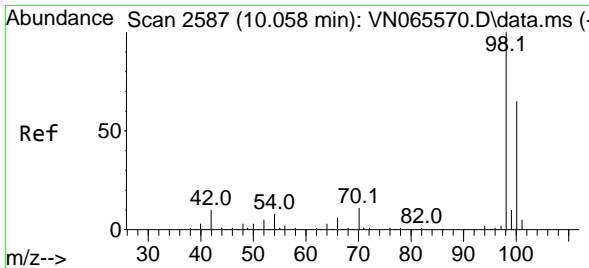


#38
 Carbon Tetrachloride
 Concen: 6.81 ug/l
 RT: 7.624 min Scan# 1830
 Delta R.T. -0.106 min
 Lab File: VN065587.D
 Acq: 25 Jan 2021 19:24



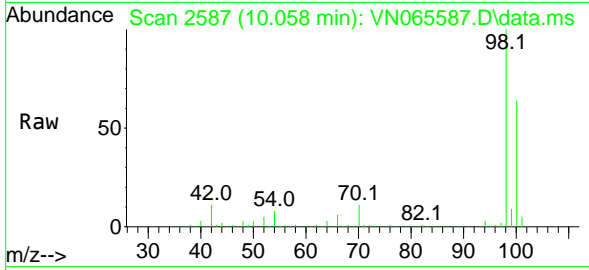
Tgt Ion: 117 Resp: 21670
 Ion Ratio Lower Upper
 117 100
 119 4.7 76.0 114.0#
 121 0.0 24.5 36.7#



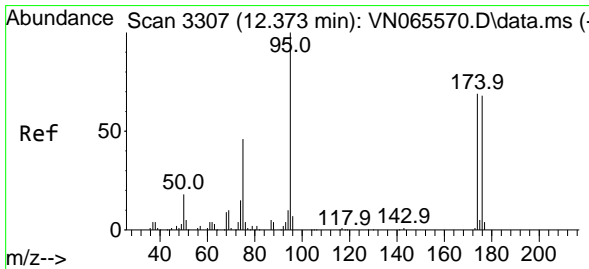
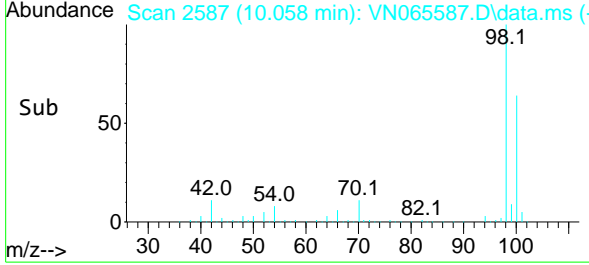
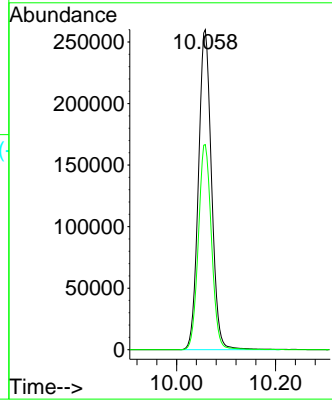


#50
 Toluene-d8
 Concen: 53.53 ug/l
 RT: 10.058 min Scan# 2587
 Delta R.T. 0.000 min
 Lab File: VN065587.D
 Acq: 25 Jan 2021 19:24

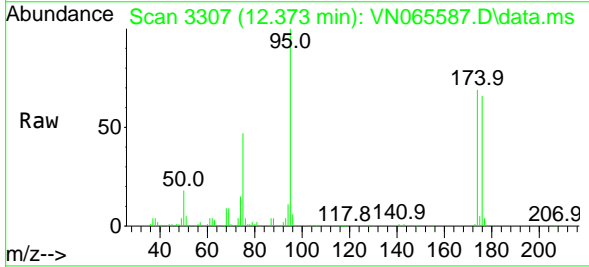
Instrument :
 MSVOA_N
 ClientSampled :



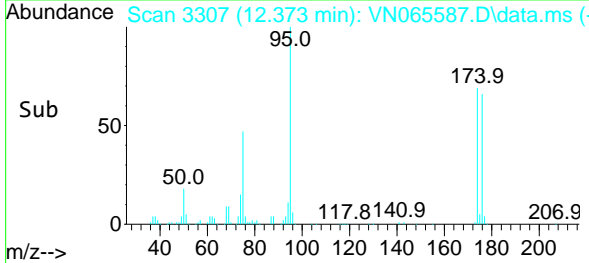
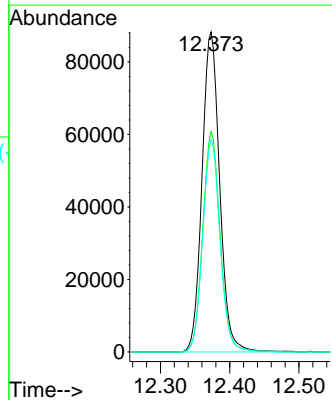
Tgt Ion: 98 Resp: 479093
 Ion Ratio Lower Upper
 98 100
 100 64.3 50.5 75.7

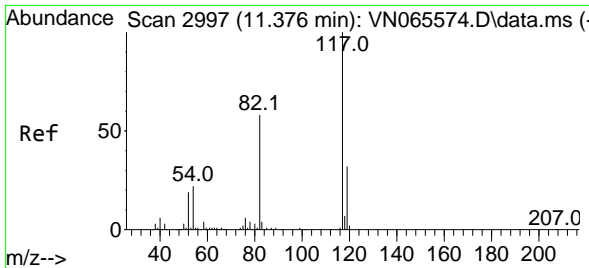


#62
 4-Bromofluorobenzene
 Concen: 48.45 ug/l
 RT: 12.373 min Scan# 3307
 Delta R.T. 0.000 min
 Lab File: VN065587.D
 Acq: 25 Jan 2021 19:24



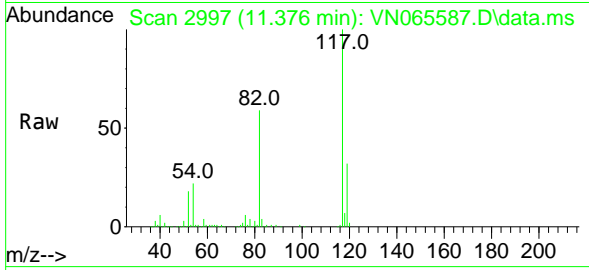
Tgt Ion: 95 Resp: 156163
 Ion Ratio Lower Upper
 95 100
 174 68.1 0.0 169.0
 176 65.4 0.0 162.4





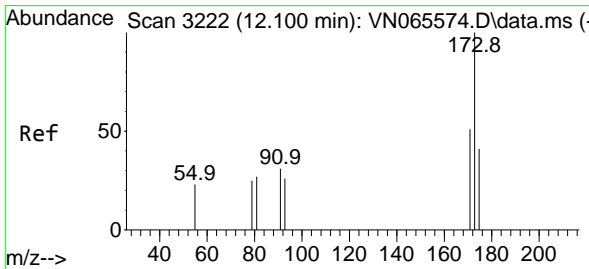
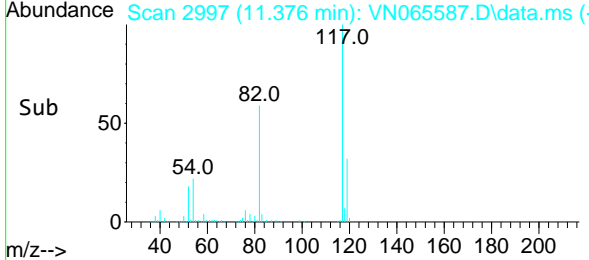
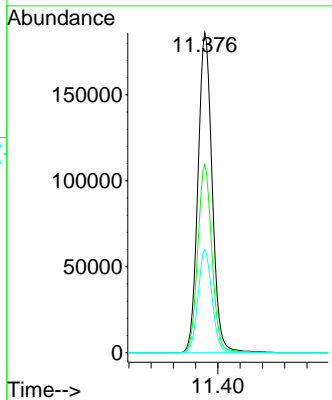
#63
 Chlorobenzene-d5
 Concen: 50.00 ug/l
 RT: 11.376 min Scan# 2997
 Delta R.T. 0.000 min
 Lab File: VN065587.D
 Acq: 25 Jan 2021 19:24

Instrument :
 MSVOA_N
ClientSampled :

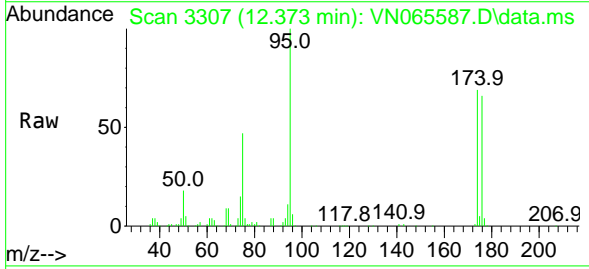


Tgt Ion:117 Resp: 330033

Ion	Ratio	Lower	Upper
117	100		
82	58.8	43.7	65.5
119	32.2	26.1	39.1

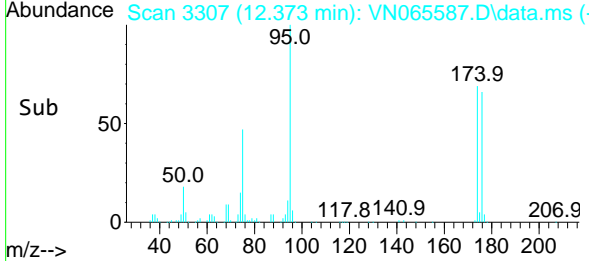
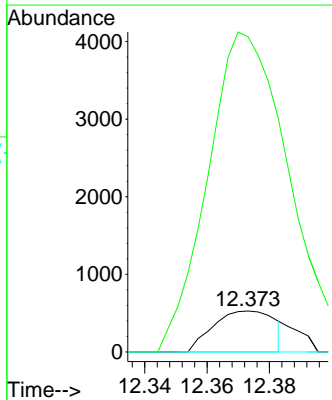


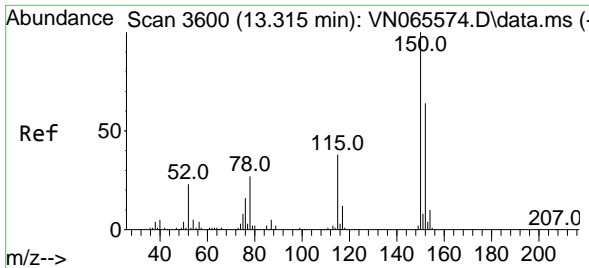
#71
 Bromoform
 Concen: 0.43 ug/l
 RT: 12.373 min Scan# 3307
 Delta R.T. 0.277 min
 Lab File: VN065587.D
 Acq: 25 Jan 2021 19:24



Tgt Ion:173 Resp: 722

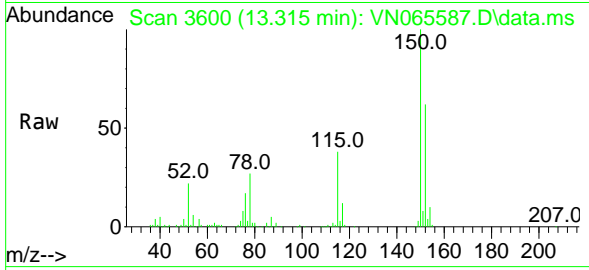
Ion	Ratio	Lower	Upper
173	100		
175	831.9	23.8	71.2#
254	0.0	0.0	0.0





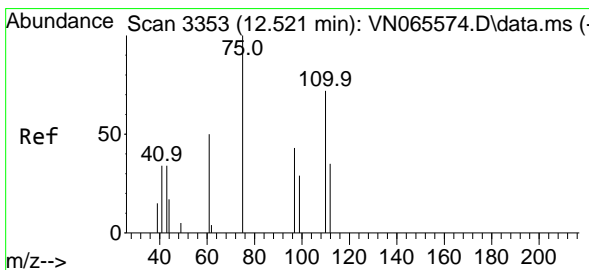
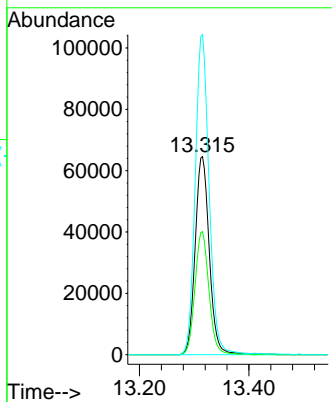
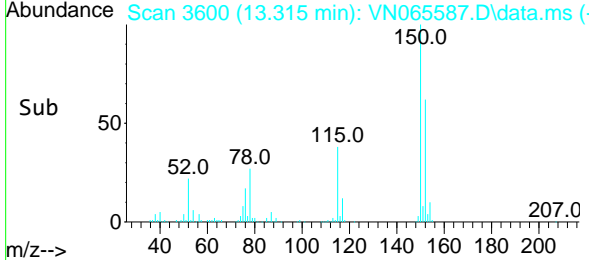
#72
 1,4-Dichlorobenzene-d4
 Concen: 50.00 ug/l
 RT: 13.315 min Scan# 3600
 Delta R.T. 0.003 min
 Lab File: VN065587.D
 Acq: 25 Jan 2021 19:24

Instrument :
 MSVOA_N
 ClientSampled :

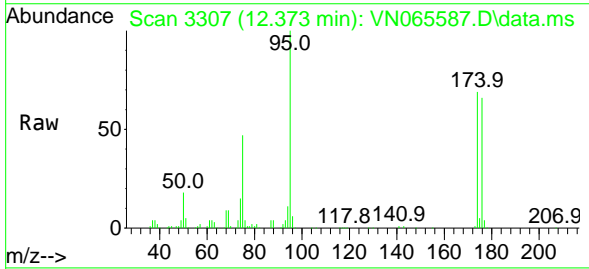


Tgt Ion:152 Resp: 115903

Ion	Ratio	Lower	Upper
152	100		
115	61.1	28.5	85.6
150	158.3	0.0	347.6

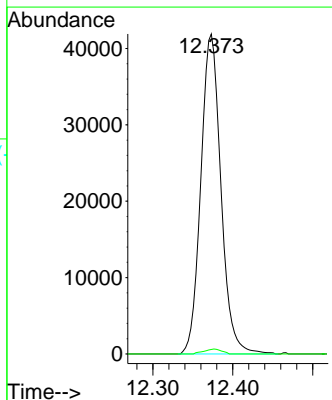
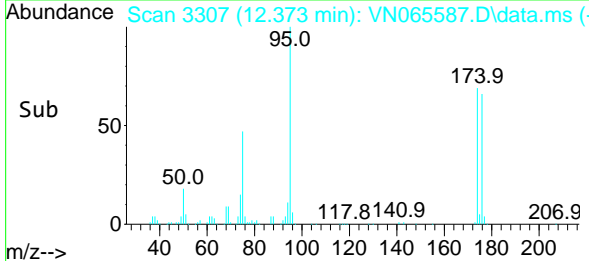


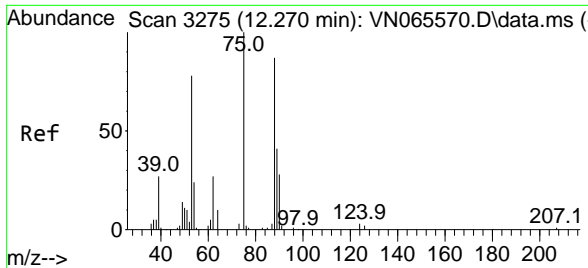
#76
 1,2,3-Trichloropropane
 Concen: 24.19 ug/l
 RT: 12.373 min Scan# 3307
 Delta R.T. -0.151 min
 Lab File: VN065587.D
 Acq: 25 Jan 2021 19:24



Tgt Ion: 75 Resp: 73320

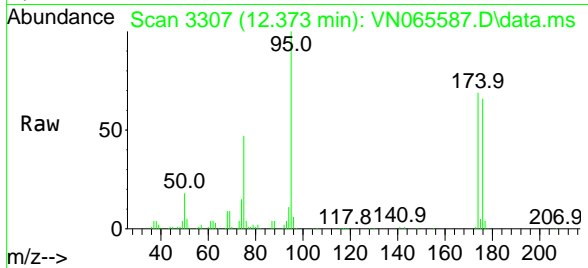
Ion	Ratio	Lower	Upper
75	100		
77	1.4	0.0	0.0#



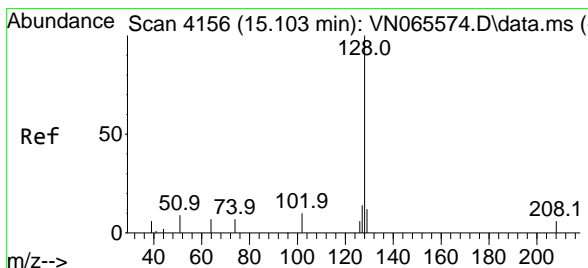
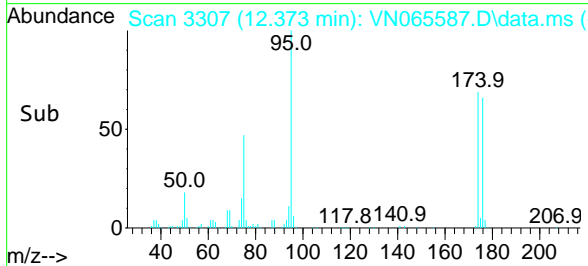
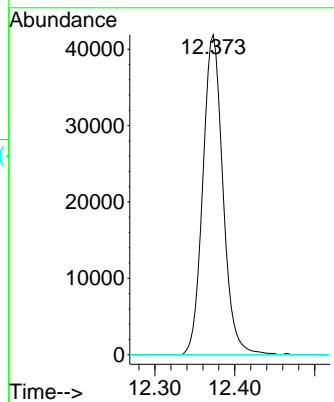


#81
 trans-1,4-Dichloro-2-butene
 Concen: 61.96 ug/l
 RT: 12.373 min Scan# 3307
 Delta R.T. 0.103 min
 Lab File: VN065587.D
 Acq: 25 Jan 2021 19:24

Instrument : MSVOA_N
 ClientSampled :



Tgt Ion: 75 Resp: 73320
 Ion Ratio Lower Upper
 75 100
 53 0.0 74.6 111.8#
 89 0.0 35.8 53.8#



#95
 Naphthalene
 Concen: 4.69 ug/l
 RT: 15.106 min Scan# 4157
 Delta R.T. 0.006 min
 Lab File: VN065587.D
 Acq: 25 Jan 2021 19:24

Tgt Ion:128 Resp: 10021
 Ion Ratio Lower Upper
 128 100
 127 12.0 10.2 15.2
 129 8.8 8.6 13.0

