

Data Path : Z:\voasrv\HPCHEM1\MSVOA\_N\Data\VN012523\  
 Data File : VN076400.D  
 Acq On : 25 Jan 2023 14:34  
 Operator : JC\MD  
 Sample : 01291-09  
 Misc : 5.0mL/MSVOA\_N/WATER  
 ALS Vial : 12 Sample Multiplier: 1

Instrument :  
 MSVOA\_N  
 ClientSampleId :  
 BP-VPB-RW10-GW-418-420

Quant Time: Jan 26 07:17:03 2023  
 Quant Method : Z:\voasrv\HPCHEM1\MSVOA\_N\methods\82N011623W.M  
 Quant Title : SW846 8260  
 QLast Update : Tue Jan 17 03:59:22 2023  
 Response via : Initial Calibration

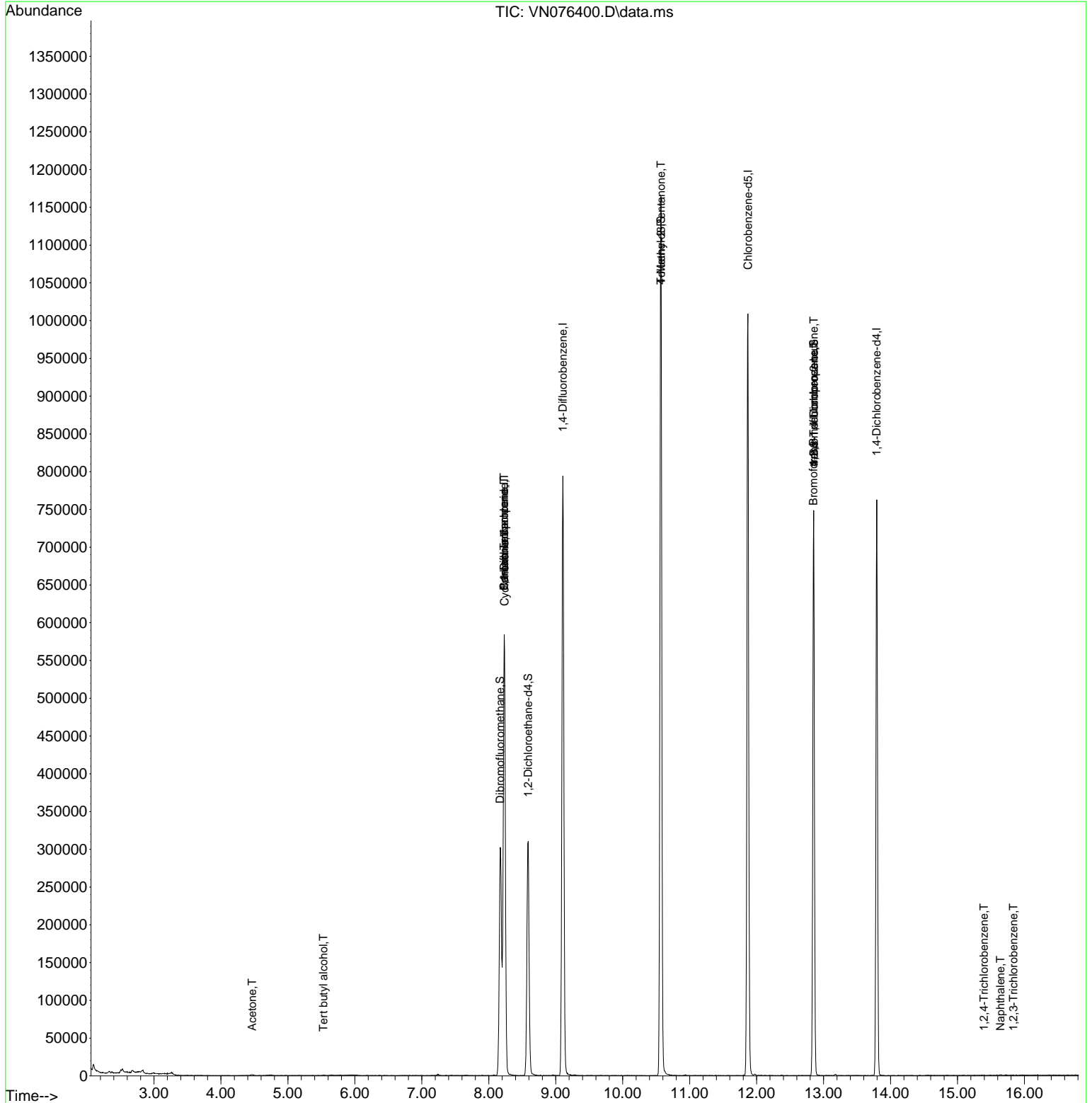
| Compound                      | R.T.   | QIon           | Response | Conc    | Units    | Dev(Min) |
|-------------------------------|--------|----------------|----------|---------|----------|----------|
| -----                         |        |                |          |         |          |          |
| Internal Standards            |        |                |          |         |          |          |
| 1) Pentafluorobenzene         | 8.230  | 168            | 432039   | 50.000  | ug/l     | 0.00     |
| 34) 1,4-Difluorobenzene       | 9.106  | 114            | 708122   | 50.000  | ug/l     | 0.00     |
| 63) Chlorobenzene-d5          | 11.870 | 117            | 600003   | 50.000  | ug/l     | 0.00     |
| 72) 1,4-Dichlorobenzene-d4    | 13.794 | 152            | 205227   | 50.000  | ug/l     | 0.00     |
| System Monitoring Compounds   |        |                |          |         |          |          |
| 33) 1,2-Dichloroethane-d4     | 8.588  | 65             | 263731   | 54.518  | ug/l     | 0.00     |
| Spiked Amount                 | 50.000 | Range 74 - 125 | Recovery | =       | 109.040% |          |
| 35) Dibromofluoromethane      | 8.171  | 113            | 220869   | 49.862  | ug/l     | 0.00     |
| Spiked Amount                 | 50.000 | Range 75 - 124 | Recovery | =       | 99.720%  |          |
| 50) Toluene-d8                | 10.571 | 98             | 814556   | 49.792  | ug/l     | 0.00     |
| Spiked Amount                 | 50.000 | Range 86 - 113 | Recovery | =       | 99.580%  |          |
| 62) 4-Bromofluorobenzene      | 12.853 | 95             | 247636   | 46.370  | ug/l     | 0.00     |
| Spiked Amount                 | 50.000 | Range 83 - 123 | Recovery | =       | 92.740%  |          |
| Target Compounds              |        |                |          |         |          |          |
|                               |        |                |          |         |          | Qvalue   |
| 11) Tert butyl alcohol        | 5.530  | 59             | 701      | 1.083   | ug/l #   | 72       |
| 16) Acetone                   | 4.465  | 43             | 1852     | 1.121   | ug/l     | 93       |
| 31) Cyclohexane               | 8.235  | 56             | 8949     | 1.204   | ug/l #   | 6        |
| 36) 1,1-Dichloropropene       | 8.230  | 75             | 34659    | 5.506   | ug/l #   | 49       |
| 38) Carbon Tetrachloride      | 8.230  | 117            | 45654    | 6.504   | ug/l #   | 17       |
| 51) 4-Methyl-2-Pentanone      | 10.571 | 43             | 3450     | 0.716   | ug/l #   | 1        |
| 71) Bromoform                 | 12.847 | 173            | 1545     | 0.453   | ug/l #   | 1        |
| 76) 1,2,3-Trichloropropane    | 12.853 | 75             | 132326   | 35.111  | ug/l #   | 1        |
| 81) trans-1,4-Dichloro-2-b... | 12.853 | 75             | 132326   | 107.280 | ug/l #   | 11       |
| 93) 1,2,4-Trichlorobenzene    | 15.394 | 180            | 143      | 1.344   | ug/l #   | 83       |
| 95) Naphthalene               | 15.641 | 128            | 953      | 1.925   | ug/l #   | 69       |
| 96) 1,2,3-Trichlorobenzene    | 15.835 | 180            | 96       | 1.181   | ug/l #   | 66       |
| -----                         |        |                |          |         |          |          |

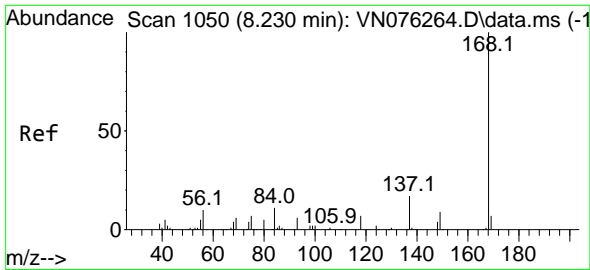
(#) = qualifier out of range (m) = manual integration (+) = signals summed

Data Path : Z:\voasrv\HPCHEM1\MSVOA\_N\Data\VN012523\  
 Data File : VN076400.D  
 Acq On : 25 Jan 2023 14:34  
 Operator : JC\MD  
 Sample : 01291-09  
 Misc : 5.0mL/MSVOA\_N/WATER  
 ALS Vial : 12 Sample Multiplier: 1

Instrument :  
 MSVOA\_N  
 ClientSampleId :  
 BP-VPB-RW10-GW-418-420

Quant Time: Jan 26 07:17:03 2023  
 Quant Method : Z:\voasrv\HPCHEM1\MSVOA\_N\methods\82N011623W.M  
 Quant Title : SW846 8260  
 QLast Update : Tue Jan 17 03:59:22 2023  
 Response via : Initial Calibration

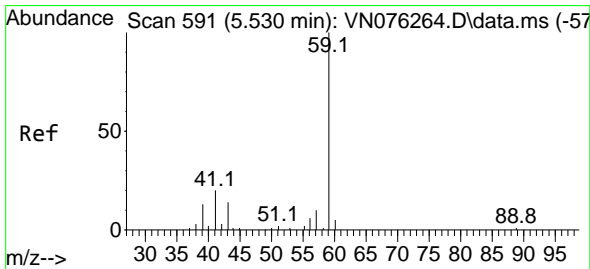
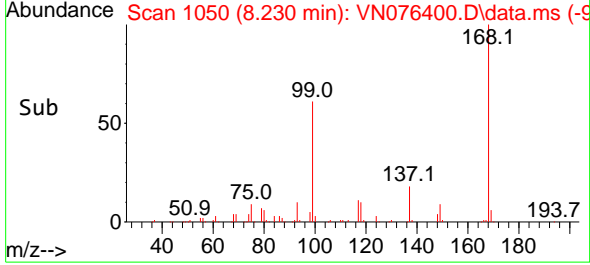
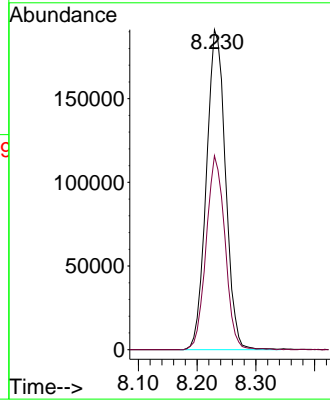
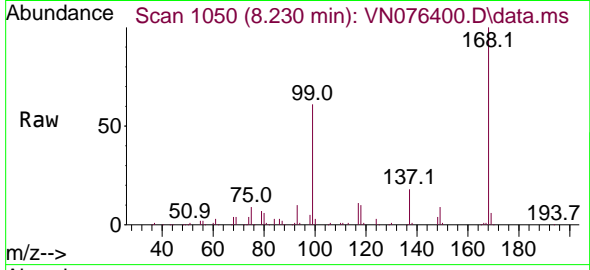




#1  
 Pentafluorobenzene  
 Concen: 50.000 ug/l  
 RT: 8.230 min Scan# 1050  
 Delta R.T. -0.000 min  
 Lab File: VN076400.D  
 Acq: 25 Jan 2023 14:34

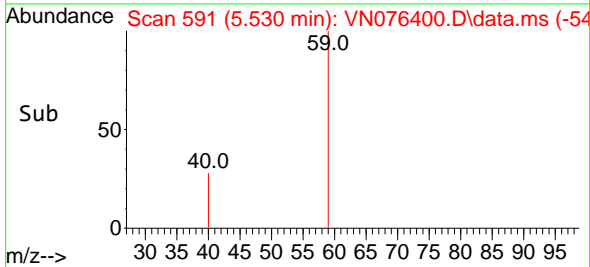
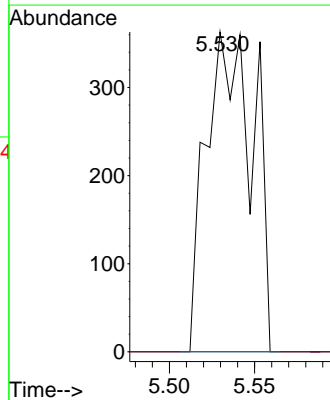
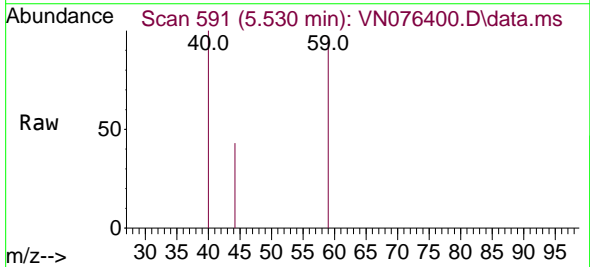
Instrument : MSVOA\_N  
 ClientSampleId : BP-VPB-RW10-GW-418-420

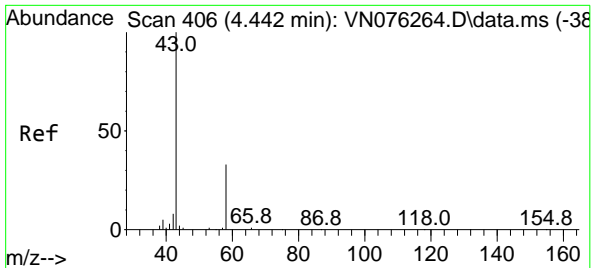
Tgt Ion:168 Resp: 432039  
 Ion Ratio Lower Upper  
 168 100  
 99 60.6 41.6 62.4



#11  
 Tert butyl alcohol  
 Concen: 1.083 ug/l  
 RT: 5.530 min Scan# 591  
 Delta R.T. -0.000 min  
 Lab File: VN076400.D  
 Acq: 25 Jan 2023 14:34

Tgt Ion: 59 Resp: 701  
 Ion Ratio Lower Upper  
 59 100  
 57 0.0 8.5 12.7#

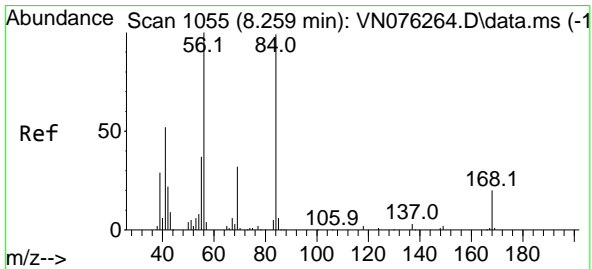
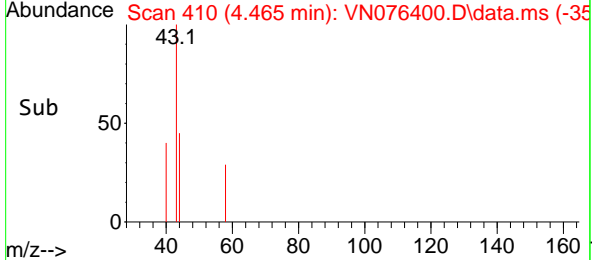
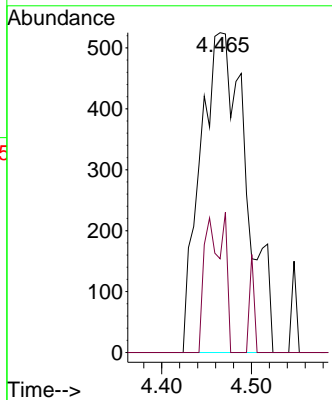
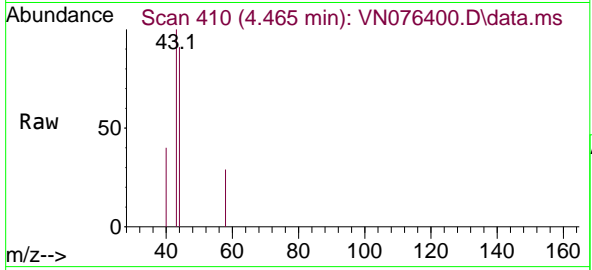




#16  
 Acetone  
 Concen: 1.121 ug/l  
 RT: 4.465 min Scan# 41  
 Delta R.T. 0.023 min  
 Lab File: VN076400.D  
 Acq: 25 Jan 2023 14:34

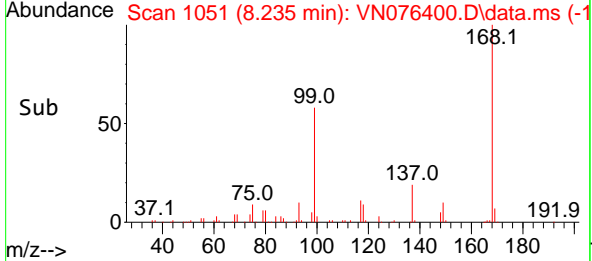
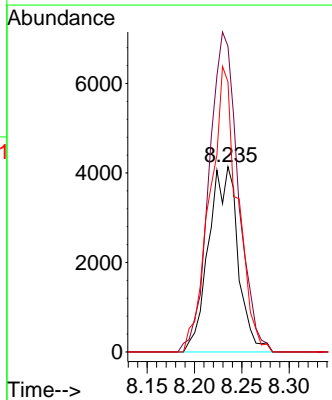
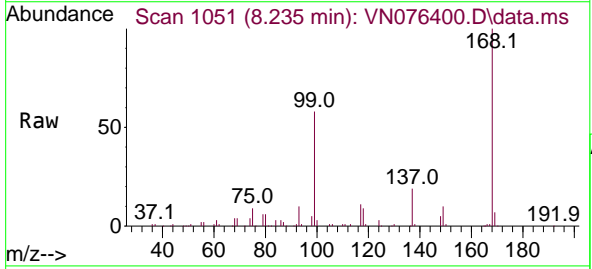
Instrument : MSVOA\_N  
 ClientSampleId : BP-VPB-RW10-GW-418-420

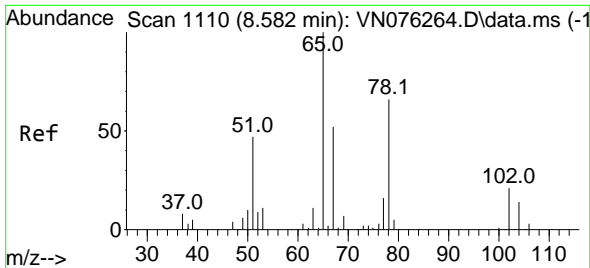
| Tgt Ion | Resp | Ion Ratio | Lower | Upper |
|---------|------|-----------|-------|-------|
| 43      | 1852 | 100       |       |       |
| 58      | 29.3 | 26.7      |       | 40.1  |



#31  
 Cyclohexane  
 Concen: 1.204 ug/l  
 RT: 8.235 min Scan# 1051  
 Delta R.T. -0.024 min  
 Lab File: VN076400.D  
 Acq: 25 Jan 2023 14:34

| Tgt Ion | Resp  | Ion Ratio | Lower | Upper  |
|---------|-------|-----------|-------|--------|
| 56      | 8949  | 100       |       |        |
| 69      | 165.0 | 25.8      |       | 38.8#  |
| 84      | 145.8 | 79.0      |       | 118.4# |

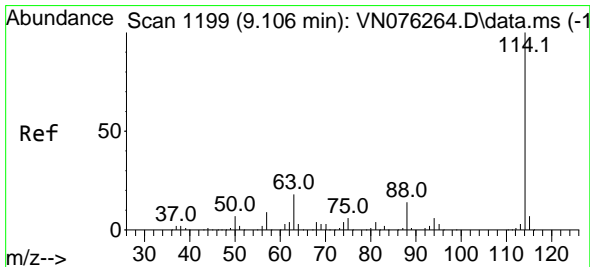
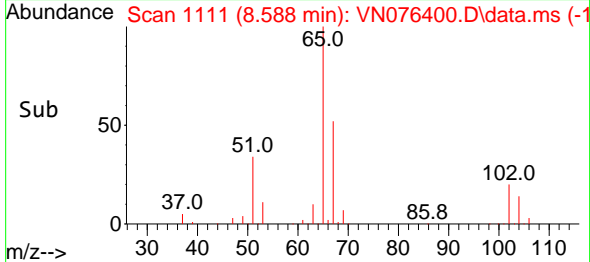
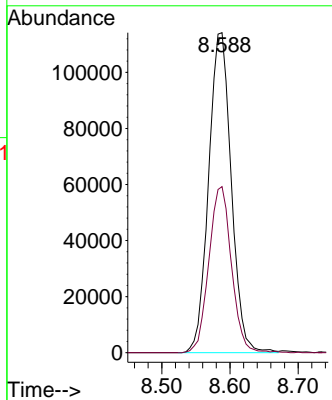
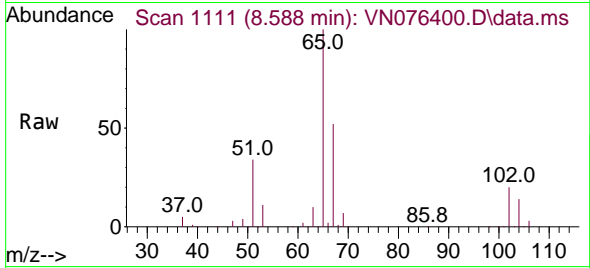




#33  
 1,2-Dichloroethane-d4  
 Concen: 54.518 ug/l  
 RT: 8.588 min Scan# 1111  
 Delta R.T. 0.006 min  
 Lab File: VN076400.D  
 Acq: 25 Jan 2023 14:34

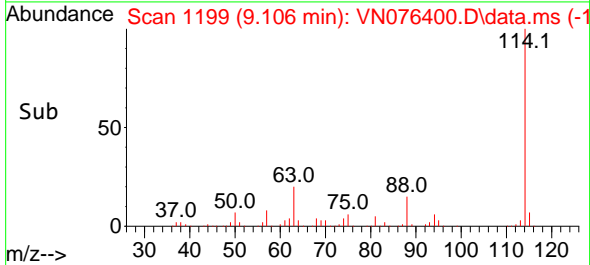
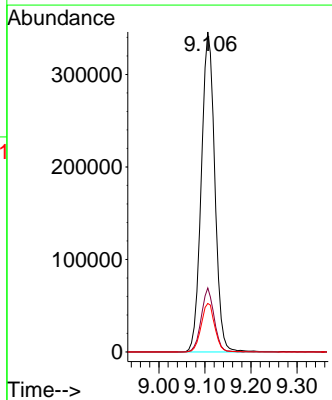
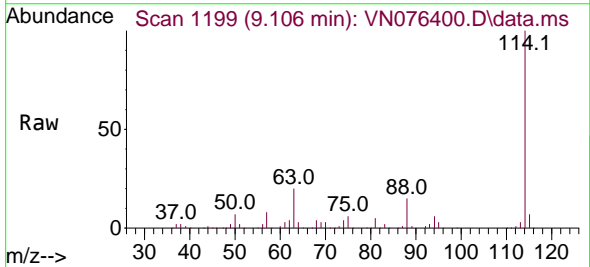
Instrument : MSVOA\_N  
 ClientSampleId : BP-VPB-RW10-GW-418-420

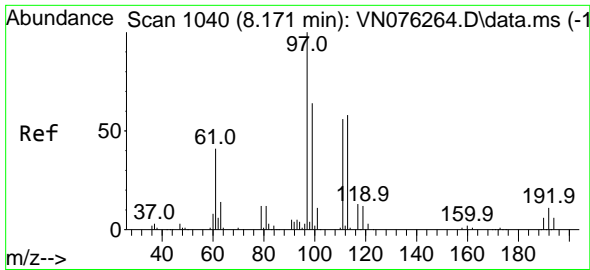
Tgt Ion: 65 Resp: 263731  
 Ion Ratio Lower Upper  
 65 100  
 67 51.8 0.0 104.6



#34  
 1,4-Difluorobenzene  
 Concen: 50.000 ug/l  
 RT: 9.106 min Scan# 1199  
 Delta R.T. -0.000 min  
 Lab File: VN076400.D  
 Acq: 25 Jan 2023 14:34

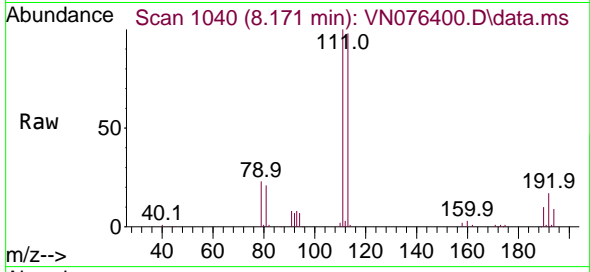
Tgt Ion:114 Resp: 708122  
 Ion Ratio Lower Upper  
 114 100  
 63 20.0 0.0 35.8  
 88 15.2 0.0 28.0



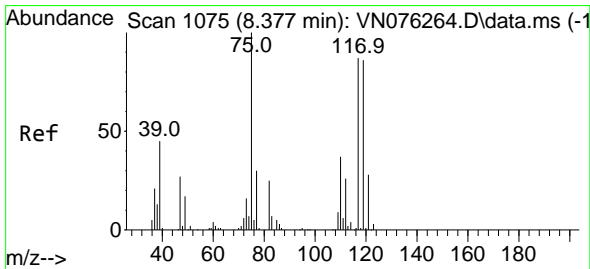
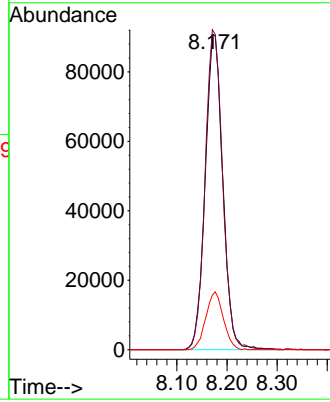
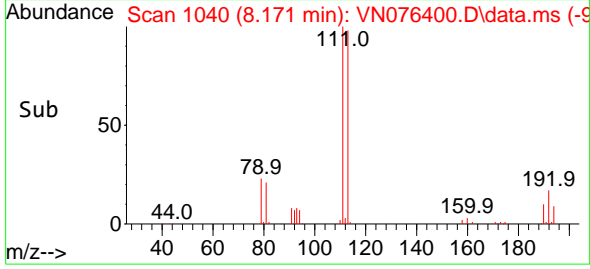


#35  
 Dibromofluoromethane  
 Concen: 49.862 ug/l  
 RT: 8.171 min Scan# 1040  
 Delta R.T. -0.000 min  
 Lab File: VN076400.D  
 Acq: 25 Jan 2023 14:34

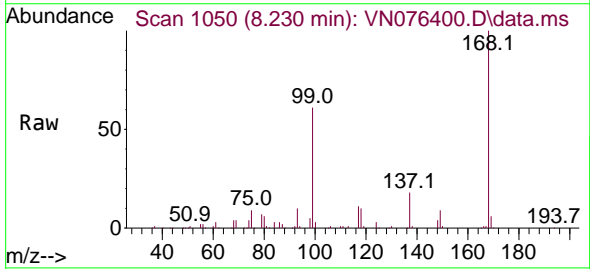
Instrument : MSVOA\_N  
 ClientSampleId : BP-VPB-RW10-GW-418-420



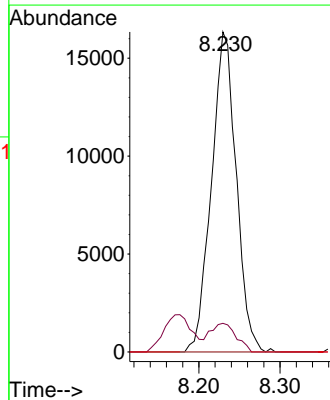
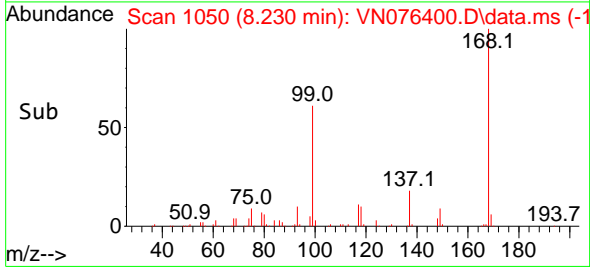
Tgt Ion: 113 Resp: 220869  
 Ion Ratio Lower Upper  
 113 100  
 111 101.3 82.7 124.1  
 192 18.3 15.6 23.4

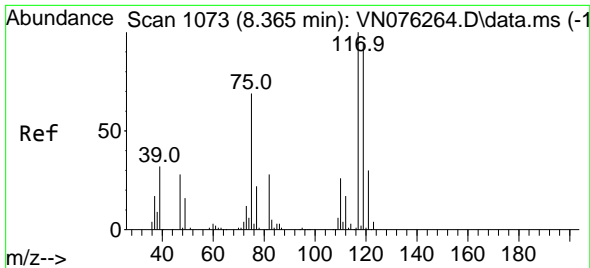


#36  
 1,1-Dichloropropene  
 Concen: 5.506 ug/l  
 RT: 8.230 min Scan# 1050  
 Delta R.T. -0.147 min  
 Lab File: VN076400.D  
 Acq: 25 Jan 2023 14:34



Tgt Ion: 75 Resp: 34659  
 Ion Ratio Lower Upper  
 75 100  
 110 9.2 18.8 56.3#  
 77 0.0 25.0 37.4#



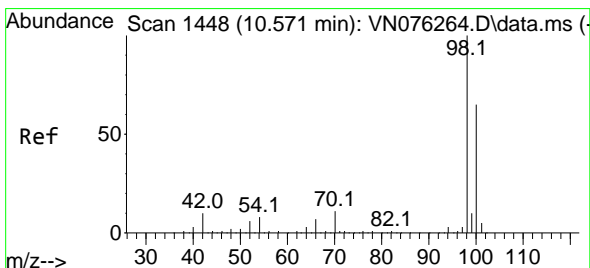
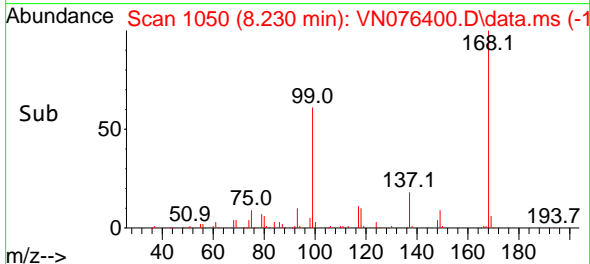
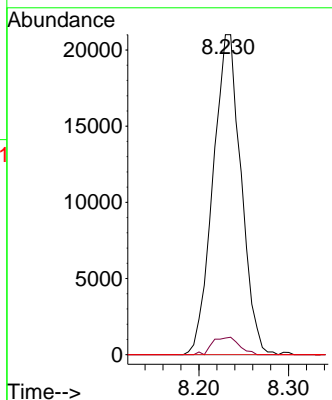
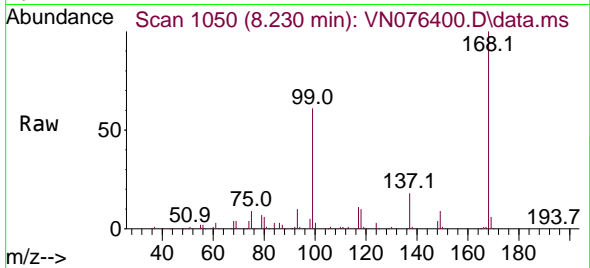


#38  
 Carbon Tetrachloride  
 Concen: 6.504 ug/l  
 RT: 8.230 min Scan# 1073  
 Delta R.T. -0.135 min  
 Lab File: VN076400.D  
 Acq: 25 Jan 2023 14:34

Instrument : MSVOA\_N  
 ClientSampleId : BP-VPB-RW10-GW-418-420

Tgt Ion:117 Resp: 45654

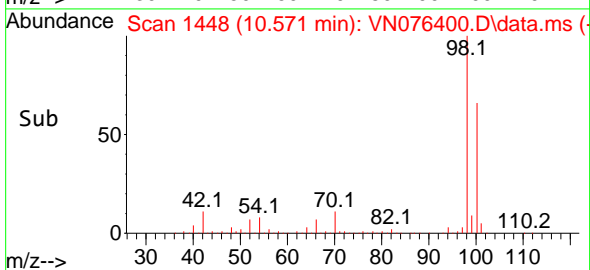
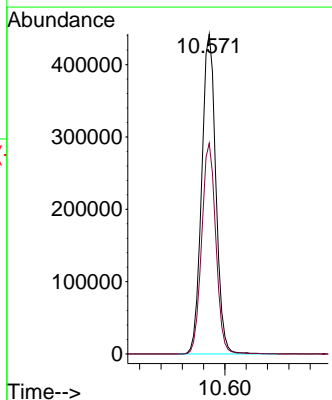
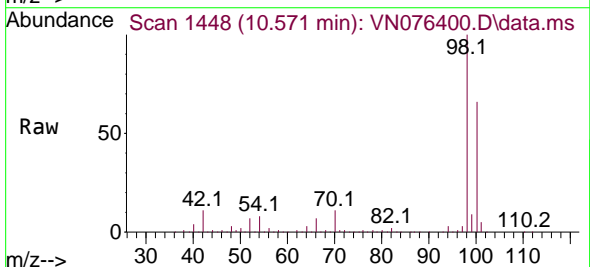
| Ion | Ratio | Lower | Upper  |
|-----|-------|-------|--------|
| 117 | 100   |       |        |
| 119 | 5.2   | 75.4  | 113.0# |
| 121 | 0.0   | 24.2  | 36.2#  |

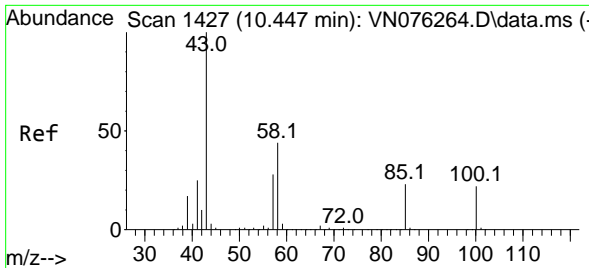


#50  
 Toluene-d8  
 Concen: 49.792 ug/l  
 RT: 10.571 min Scan# 1448  
 Delta R.T. -0.000 min  
 Lab File: VN076400.D  
 Acq: 25 Jan 2023 14:34

Tgt Ion: 98 Resp: 814556

| Ion | Ratio | Lower | Upper |
|-----|-------|-------|-------|
| 98  | 100   |       |       |
| 100 | 65.8  | 52.2  | 78.4  |

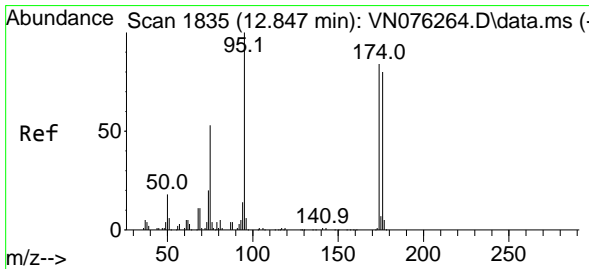
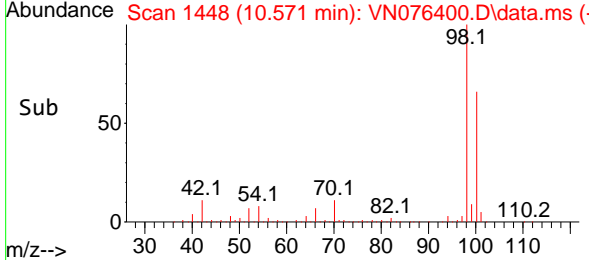
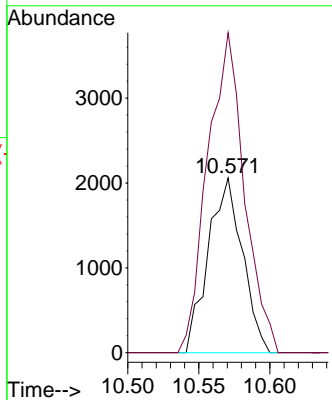
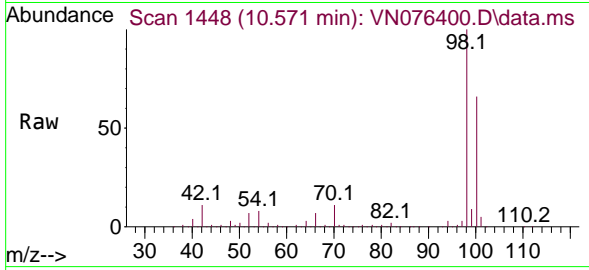




#51  
 4-Methyl-2-Pentanone  
 Concen: 0.716 ug/l  
 RT: 10.571 min Scan# 1427  
 Delta R.T. 0.124 min  
 Lab File: VN076400.D  
 Acq: 25 Jan 2023 14:34

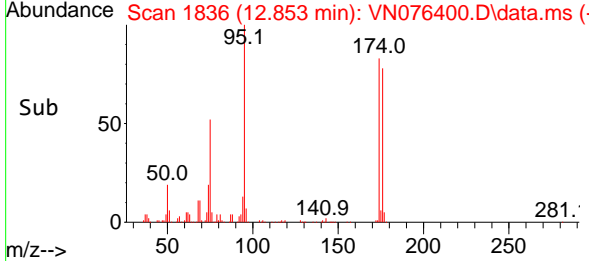
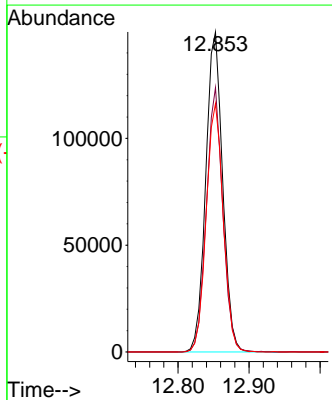
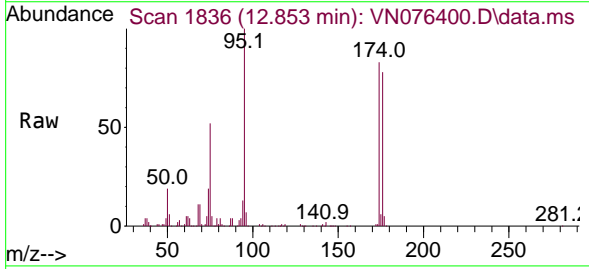
Instrument : MSVOA\_N  
 ClientSampleId : BP-VPB-RW10-GW-418-420

Tgt Ion: 43 Resp: 3450  
 Ion Ratio Lower Upper  
 43 100  
 58 196.6 35.1 52.7#

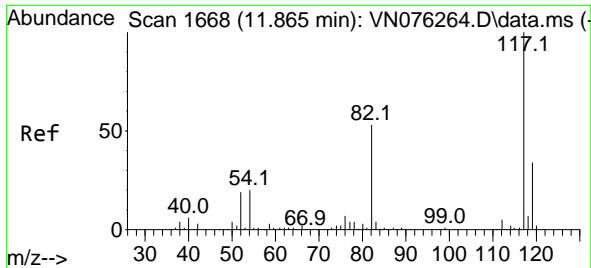


#62  
 4-Bromofluorobenzene  
 Concen: 46.370 ug/l  
 RT: 12.853 min Scan# 1836  
 Delta R.T. 0.006 min  
 Lab File: VN076400.D  
 Acq: 25 Jan 2023 14:34

Tgt Ion: 95 Resp: 247636  
 Ion Ratio Lower Upper  
 95 100  
 174 80.2 0.0 174.6  
 176 78.3 0.0 167.8





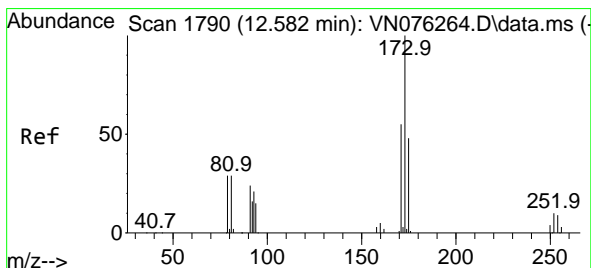
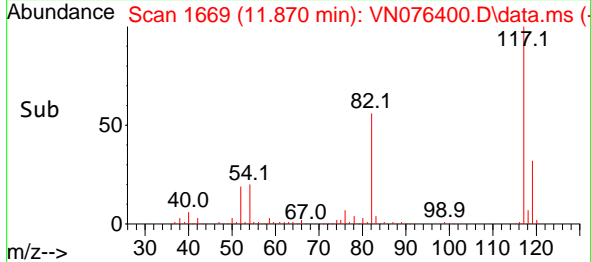
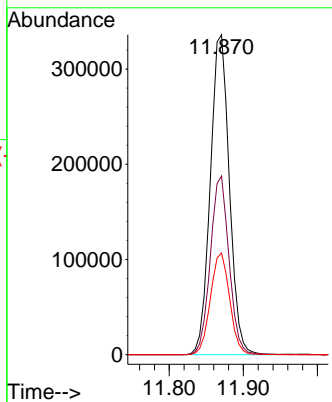
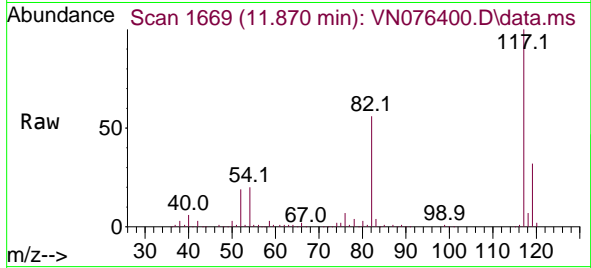


#63  
 Chlorobenzene-d5  
 Concen: 50.000 ug/l  
 RT: 11.870 min Scan# 11  
 Delta R.T. 0.005 min  
 Lab File: VN076400.D  
 Acq: 25 Jan 2023 14:34

Instrument : MSVOA\_N  
 ClientSampleId : BP-VPB-RW10-GW-418-420

Tgt Ion:117 Resp: 600003

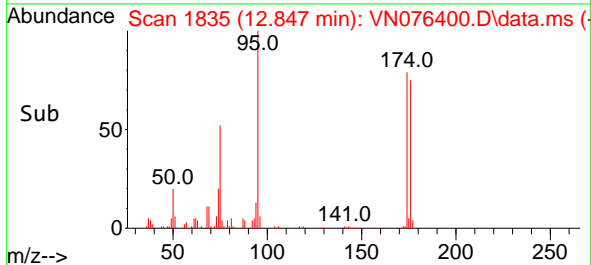
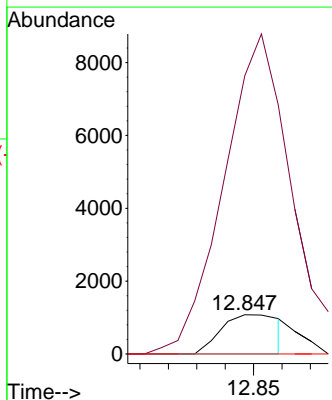
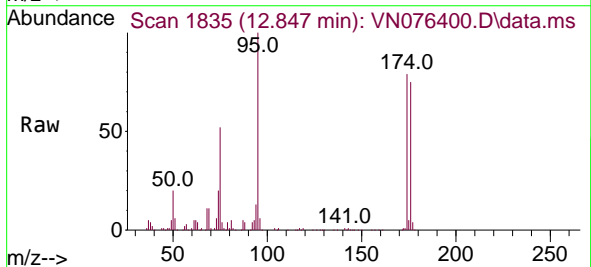
| Ion | Ratio | Lower | Upper |
|-----|-------|-------|-------|
| 117 | 100   |       |       |
| 82  | 55.9  | 42.2  | 63.2  |
| 119 | 31.8  | 26.9  | 40.3  |

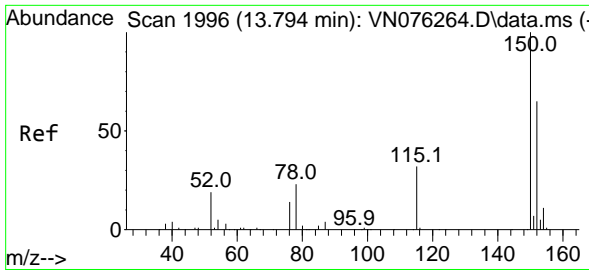


#71  
 Bromoform  
 Concen: 0.453 ug/l  
 RT: 12.847 min Scan# 1835  
 Delta R.T. 0.265 min  
 Lab File: VN076400.D  
 Acq: 25 Jan 2023 14:34

Tgt Ion:173 Resp: 1545

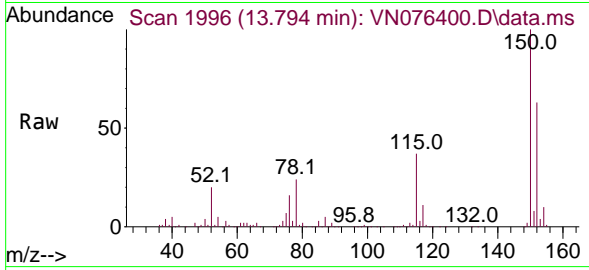
| Ion | Ratio | Lower | Upper |
|-----|-------|-------|-------|
| 173 | 100   |       |       |
| 175 | 767.2 | 24.1  | 72.4# |
| 254 | 0.0   | 0.0   | 0.0   |



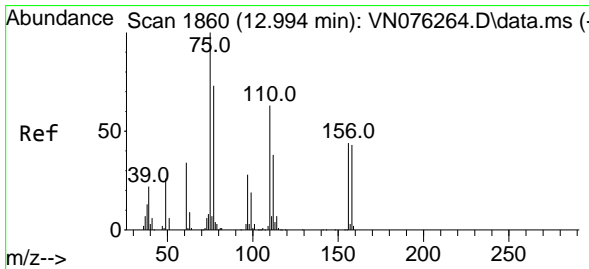
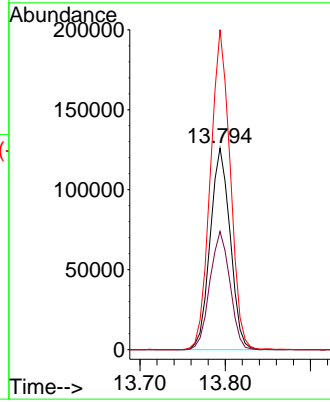
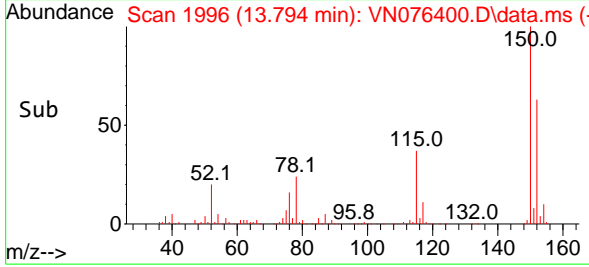


#72  
 1,4-Dichlorobenzene-d4  
 Concen: 50.000 ug/l  
 RT: 13.794 min Scan# 1996  
 Delta R.T. -0.000 min  
 Lab File: VN076400.D  
 Acq: 25 Jan 2023 14:34

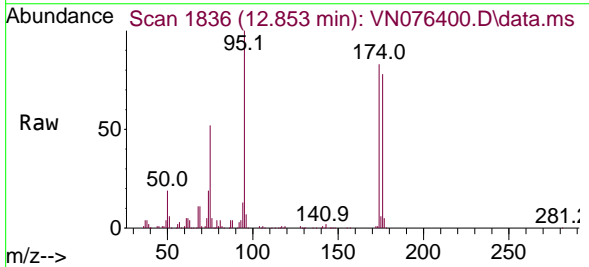
Instrument : MSVOA\_N  
 ClientSampleId : BP-VPB-RW10-GW-418-420



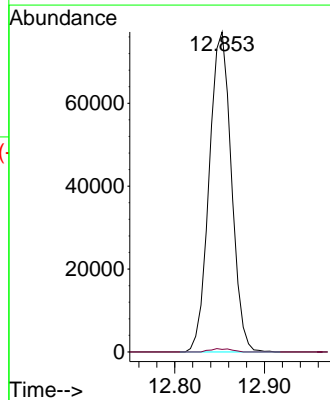
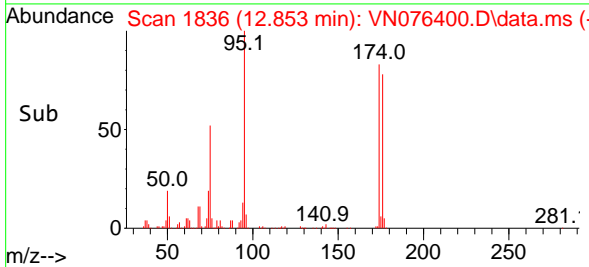
Tgt Ion:152 Resp: 205227  
 Ion Ratio Lower Upper  
 152 100  
 115 58.9 29.6 88.9  
 150 157.6 0.0 351.4

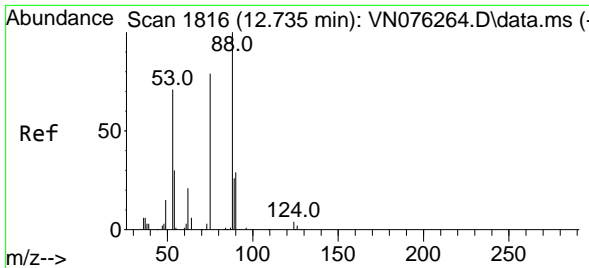


#76  
 1,2,3-Trichloropropane  
 Concen: 35.111 ug/l  
 RT: 12.853 min Scan# 1836  
 Delta R.T. -0.141 min  
 Lab File: VN076400.D  
 Acq: 25 Jan 2023 14:34



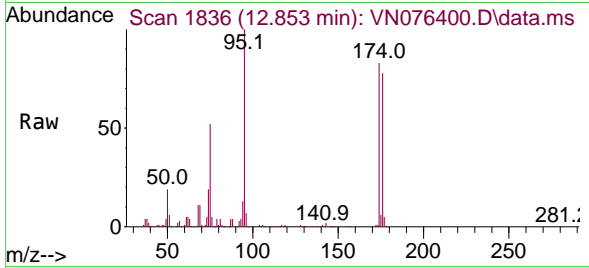
Tgt Ion: 75 Resp: 132326  
 Ion Ratio Lower Upper  
 75 100  
 77 1.0 75.2 225.6#



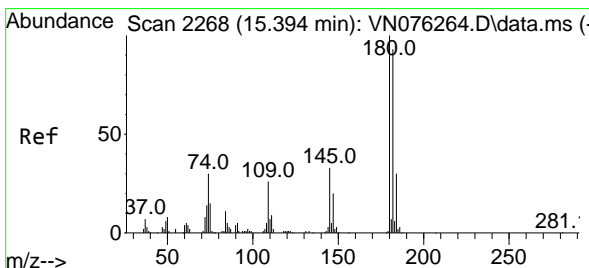
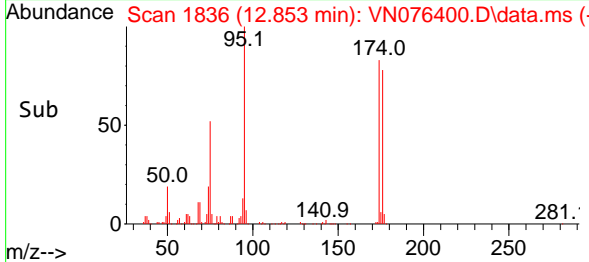
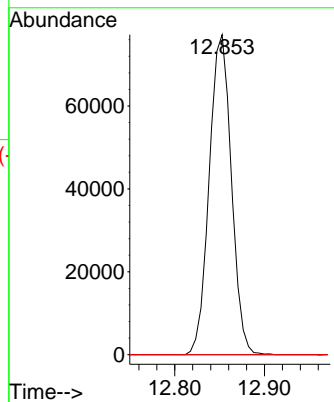


#81  
 trans-1,4-Dichloro-2-butene  
 Concen: 107.280 ug/l  
 RT: 12.853 min Scan# 1836  
 Delta R.T. 0.118 min  
 Lab File: VN076400.D  
 Acq: 25 Jan 2023 14:34

Instrument : MSVOA\_N  
 ClientSampleId : BP-VPB-RW10-GW-418-420

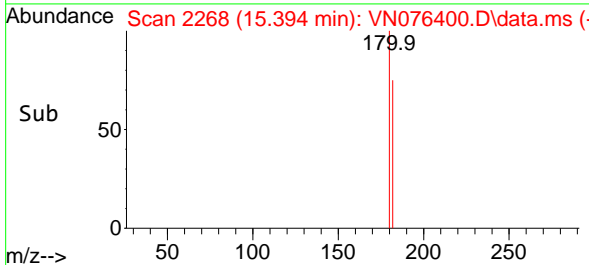
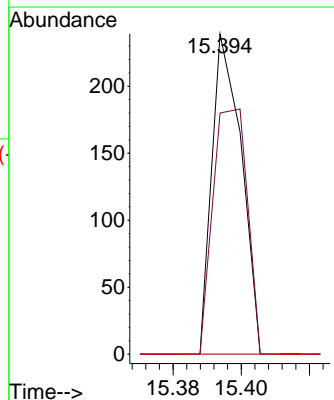
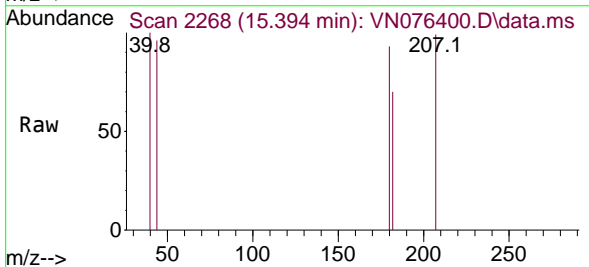


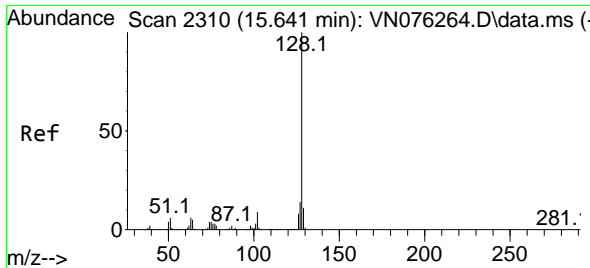
Tgt Ion: 75 Resp: 132326  
 Ion Ratio Lower Upper  
 75 100  
 53 0.0 75.8 113.8#  
 89 0.0 37.0 55.6#



#93  
 1,2,4-Trichlorobenzene  
 Concen: 1.344 ug/l  
 RT: 15.394 min Scan# 2268  
 Delta R.T. -0.000 min  
 Lab File: VN076400.D  
 Acq: 25 Jan 2023 14:34

Tgt Ion:180 Resp: 143  
 Ion Ratio Lower Upper  
 180 100  
 182 89.5 47.0 141.2  
 145 0.0 15.2 45.5#

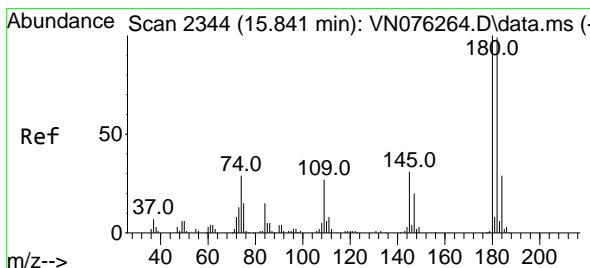
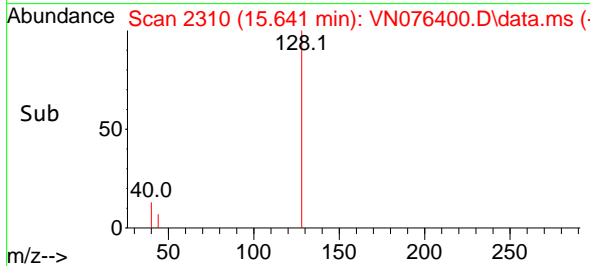
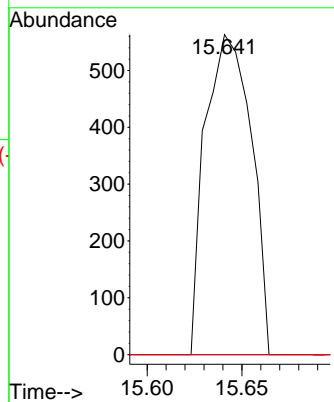
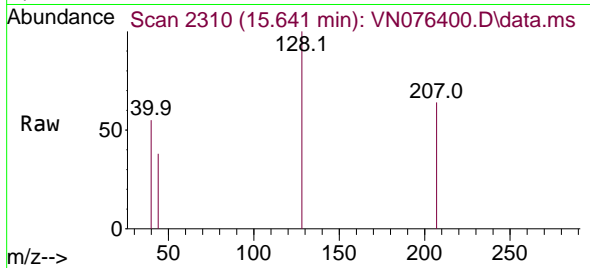




#95  
 Naphthalene  
 Concen: 1.925 ug/l  
 RT: 15.641 min Scan# 21  
 Delta R.T. -0.000 min  
 Lab File: VN076400.D  
 Acq: 25 Jan 2023 14:34

Instrument : MSVOA\_N  
 ClientSampleId : BP-VPB-RW10-GW-418-420

| Tgt Ion | Resp | Lower | Upper |
|---------|------|-------|-------|
| 128     | 100  |       |       |
| 127     | 0.0  | 10.3  | 15.5# |
| 129     | 0.0  | 8.6   | 13.0# |



#96  
 1,2,3-Trichlorobenzene  
 Concen: 1.181 ug/l  
 RT: 15.835 min Scan# 2343  
 Delta R.T. -0.006 min  
 Lab File: VN076400.D  
 Acq: 25 Jan 2023 14:34

| Tgt Ion | Resp | Lower | Upper |
|---------|------|-------|-------|
| 180     | 100  |       |       |
| 182     | 69.8 | 47.5  | 142.5 |
| 145     | 0.0  | 15.9  | 47.6# |

