

Data Path : Z:\voasrv\HPCHEM1\MSVOA_N\Data\VN012523\
 Data File : VN076401.D
 Acq On : 25 Jan 2023 14:58
 Operator : JC\MD
 Sample : 01291-10
 Misc : 5.0mL/MSVOA_N/WATER
 ALS Vial : 13 Sample Multiplier: 1

Instrument :
 MSVOA_N
 ClientSampleId :
 BP-VPB-RW10-DUP-20230124

Quant Time: Jan 26 07:17:20 2023
 Quant Method : Z:\voasrv\HPCHEM1\MSVOA_N\methods\82N011623W.M
 Quant Title : SW846 8260
 QLast Update : Tue Jan 17 03:59:22 2023
 Response via : Initial Calibration

Compound	R.T.	QIon	Response	Conc	Units	Dev(Min)

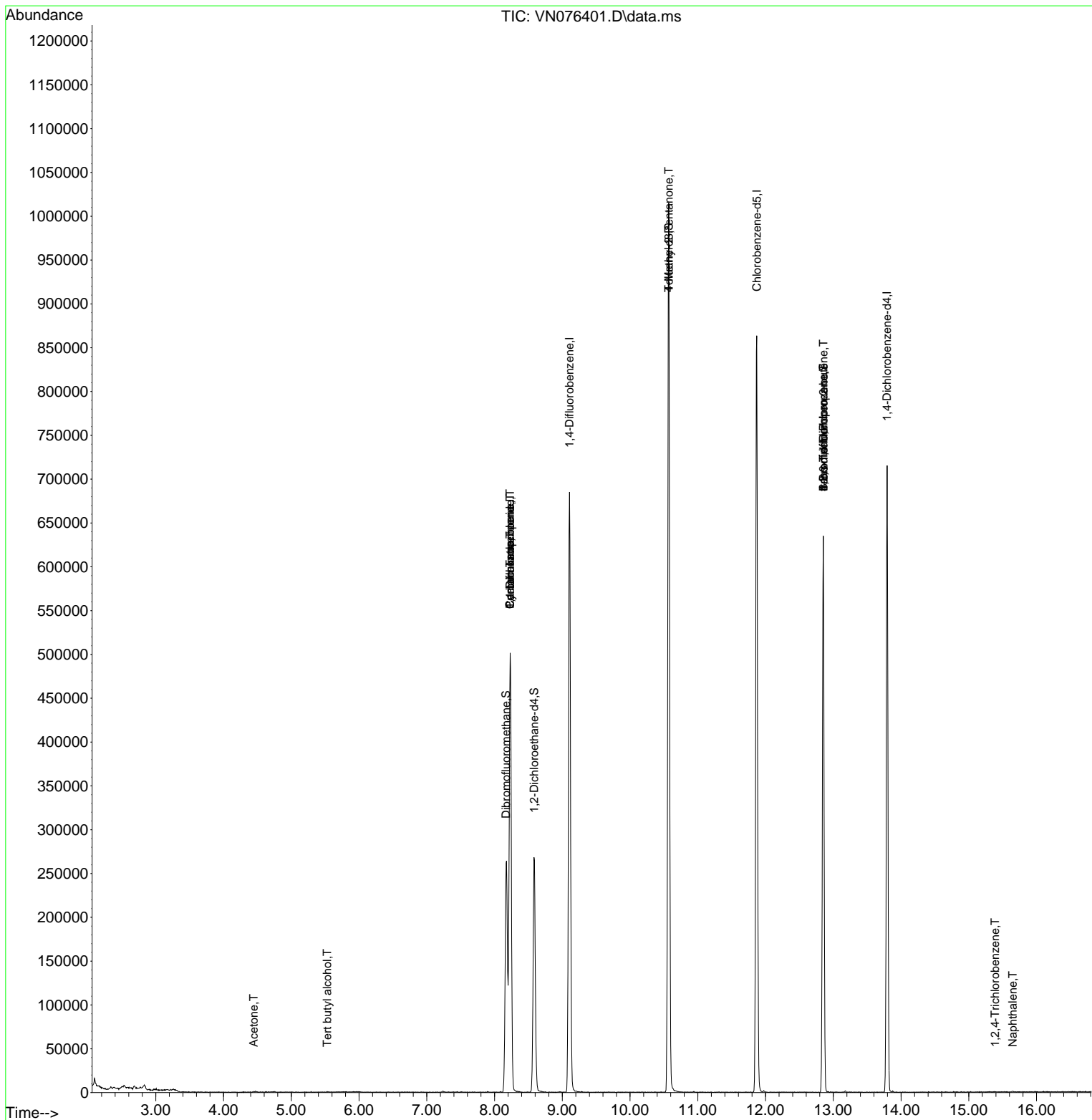
Internal Standards						
1) Pentafluorobenzene	8.230	168	377878	50.000	ug/l	0.00
34) 1,4-Difluorobenzene	9.106	114	619065	50.000	ug/l	0.00
63) Chlorobenzene-d5	11.871	117	522820	50.000	ug/l	0.00
72) 1,4-Dichlorobenzene-d4	13.794	152	192699	50.000	ug/l	0.00
System Monitoring Compounds						
33) 1,2-Dichloroethane-d4	8.583	65	223422	52.805	ug/l	0.00
Spiked Amount	50.000	Range 74 - 125	Recovery	=	105.620%	
35) Dibromofluoromethane	8.171	113	191752	49.516	ug/l	0.00
Spiked Amount	50.000	Range 75 - 124	Recovery	=	99.040%	
50) Toluene-d8	10.571	98	711504	49.750	ug/l	0.00
Spiked Amount	50.000	Range 86 - 113	Recovery	=	99.500%	
62) 4-Bromofluorobenzene	12.853	95	210513	45.089	ug/l	0.00
Spiked Amount	50.000	Range 83 - 123	Recovery	=	90.180%	
Target Compounds						
					Qvalue	
11) Tert butyl alcohol	5.530	59	458	0.809	ug/l #	72
16) Acetone	4.447	43	530	0.317	ug/l #	41
20) Methylene Chloride	5.294	84	166	Below Cal	#	52
31) Cyclohexane	8.230	56	7291	1.122	ug/l #	4
36) 1,1-Dichloropropene	8.230	75	29073	5.283	ug/l #	49
38) Carbon Tetrachloride	8.230	117	38566	6.285	ug/l #	16
51) 4-Methyl-2-Pentanone	10.571	43	2715	0.644	ug/l #	1
71) Bromoform	12.853	173	1470	0.495	ug/l #	1
76) 1,2,3-Trichloropropane	12.853	75	114219	32.199	ug/l #	1
81) trans-1,4-Dichloro-2-b...	12.853	75	114219	98.621	ug/l #	11
93) 1,2,4-Trichlorobenzene	15.388	180	59	1.322	ug/l #	13
95) Naphthalene	15.647	128	853	1.921	ug/l #	69

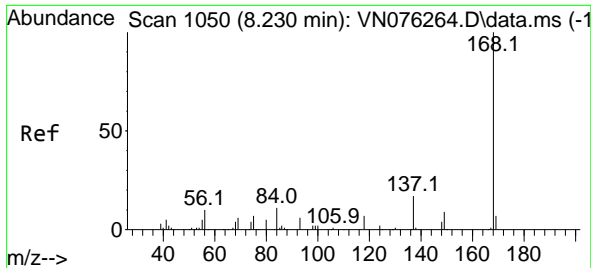
(#) = qualifier out of range (m) = manual integration (+) = signals summed

Data Path : Z:\voasrv\HPCHEM1\MSVOA_N\Data\VN012523\
 Data File : VN076401.D
 Acq On : 25 Jan 2023 14:58
 Operator : JC\MD
 Sample : 01291-10
 Misc : 5.0mL/MSVOA_N/WATER
 ALS Vial : 13 Sample Multiplier: 1

Instrument :
 MSVOA_N
 ClientSampleId :
 BP-VPB-RW10-DUP-20230124

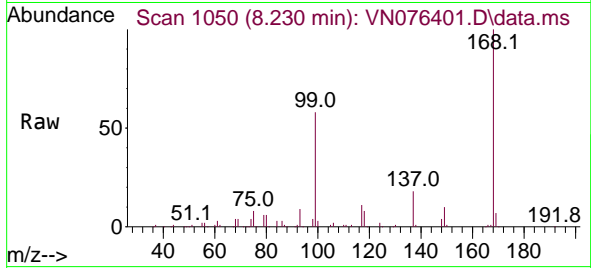
Quant Time: Jan 26 07:17:20 2023
 Quant Method : Z:\voasrv\HPCHEM1\MSVOA_N\methods\82N011623W.M
 Quant Title : SW846 8260
 QLast Update : Tue Jan 17 03:59:22 2023
 Response via : Initial Calibration



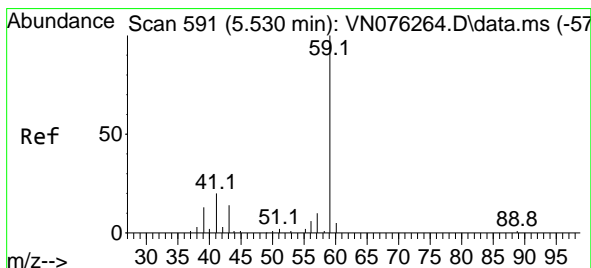
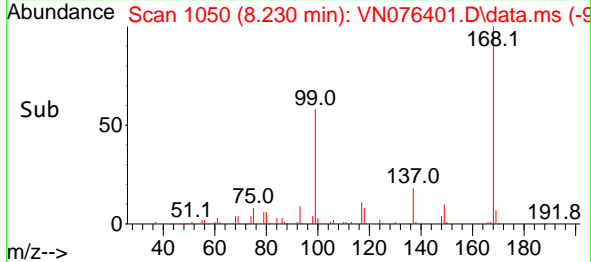
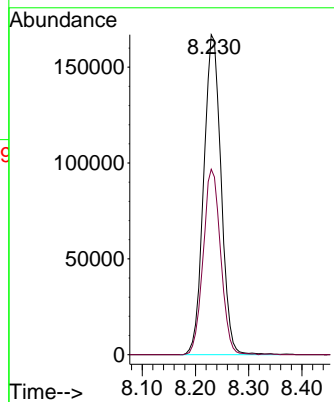


#1
 Pentafluorobenzene
 Concen: 50.000 ug/l
 RT: 8.230 min Scan# 10
 Delta R.T. -0.000 min
 Lab File: VN076401.D
 Acq: 25 Jan 2023 14:58

Instrument : MSVOA_N
 ClientSampleId : BP-VPB-RW10-DUP-20230124

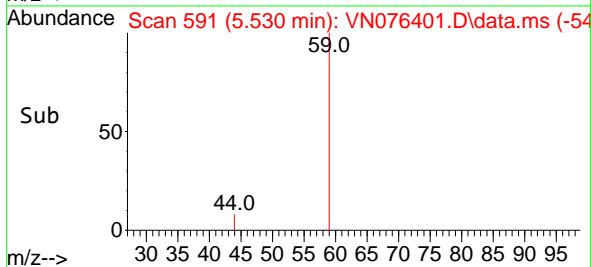
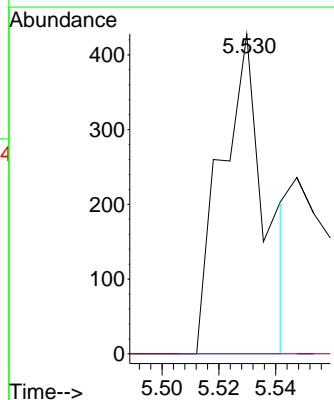
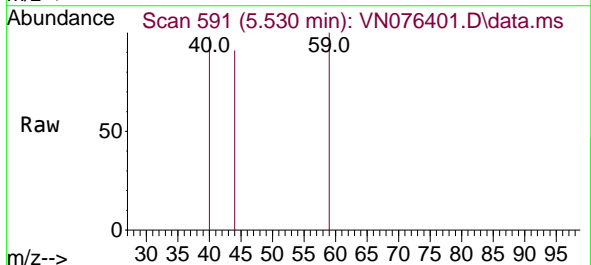


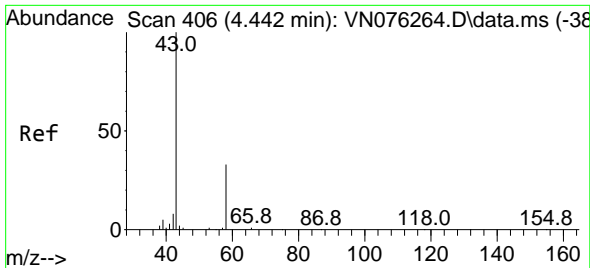
Tgt Ion:168 Resp: 377878
 Ion Ratio Lower Upper
 168 100
 99 58.0 41.6 62.4



#11
 Tert butyl alcohol
 Concen: 0.809 ug/l
 RT: 5.530 min Scan# 591
 Delta R.T. -0.000 min
 Lab File: VN076401.D
 Acq: 25 Jan 2023 14:58

Tgt Ion: 59 Resp: 458
 Ion Ratio Lower Upper
 59 100
 57 0.0 8.5 12.7#

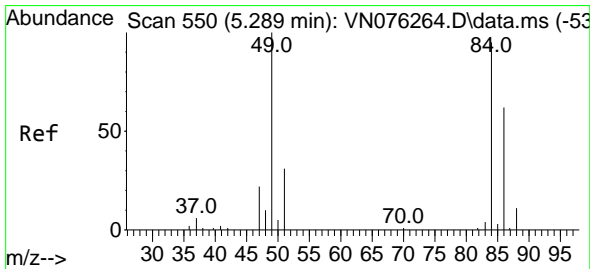
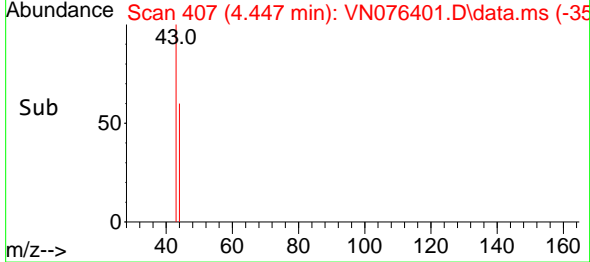
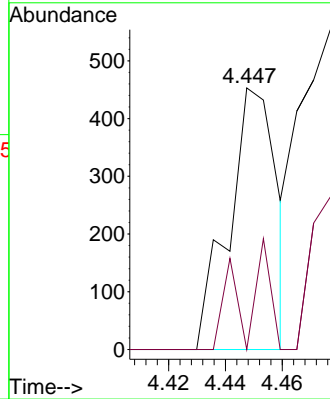
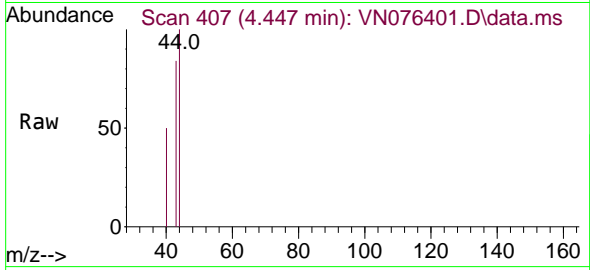




#16
 Acetone
 Concen: 0.317 ug/l
 RT: 4.447 min Scan# 407
 Delta R.T. 0.005 min
 Lab File: VN076401.D
 Acq: 25 Jan 2023 14:58

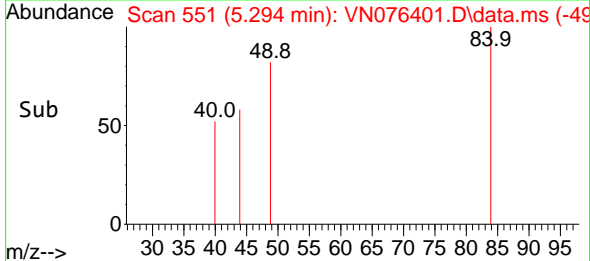
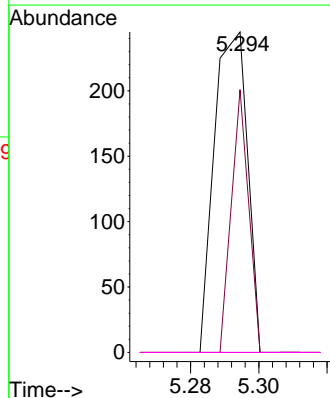
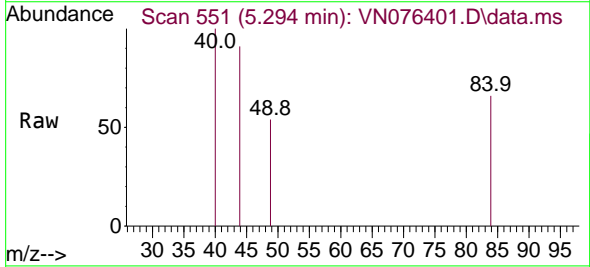
Instrument : MSVOA_N
 ClientSampleId : BP-VPB-RW10-DUP-20230124

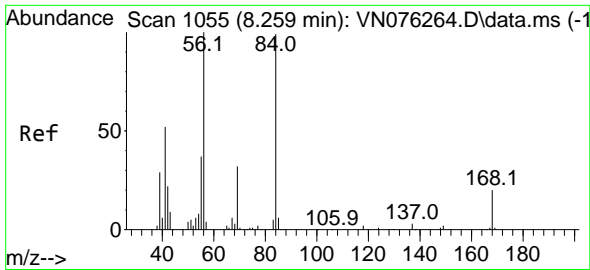
Tgt Ion: 43 Resp: 530
 Ion Ratio Lower Upper
 43 100
 58 0.0 26.7 40.1#



#20
 Methylene Chloride
 Concen: Below Cal
 RT: 5.294 min Scan# 551
 Delta R.T. 0.005 min
 Lab File: VN076401.D
 Acq: 25 Jan 2023 14:58

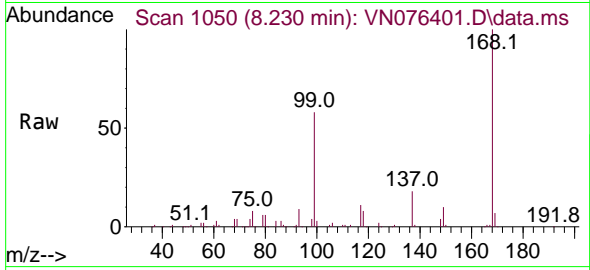
Tgt Ion: 84 Resp: 166
 Ion Ratio Lower Upper
 84 100
 49 82.0 84.5 126.7#
 51 0.0 26.0 39.0#
 86 0.0 52.0 78.0#



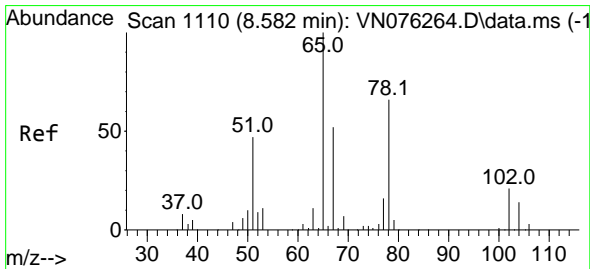
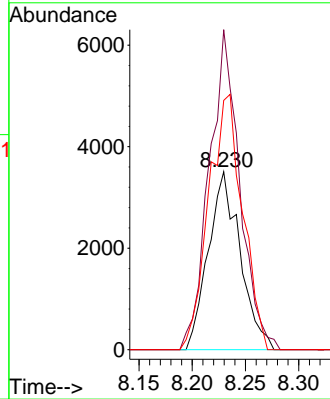
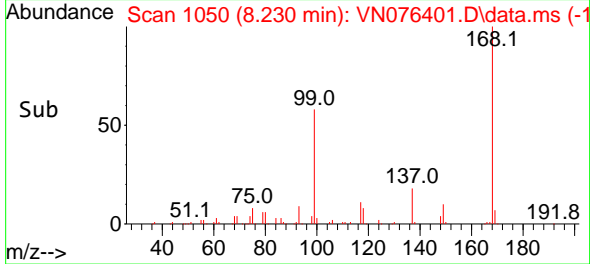


#31
 Cyclohexane
 Concen: 1.122 ug/l
 RT: 8.230 min Scan# 1050
 Delta R.T. -0.029 min
 Lab File: VN076401.D
 Acq: 25 Jan 2023 14:58

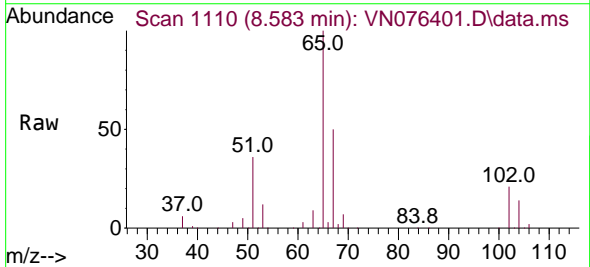
Instrument : MSVOA_N
 ClientSampleId : BP-VPB-RW10-DUP-20230124



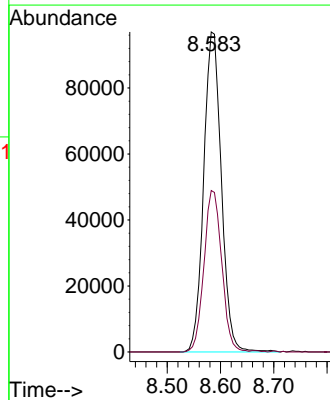
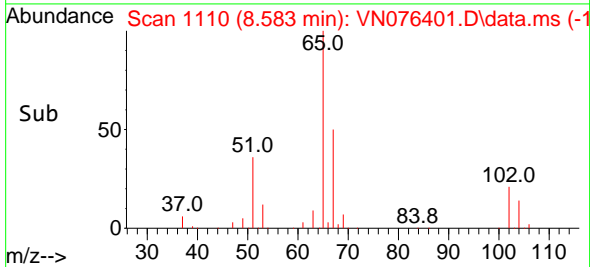
Tgt Ion: 56 Resp: 7291
 Ion Ratio Lower Upper
 56 100
 69 179.9 25.8 38.8#
 84 140.1 79.0 118.4#

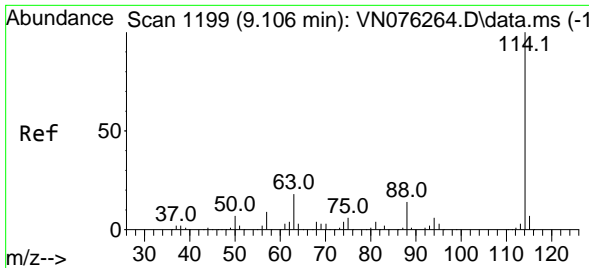


#33
 1,2-Dichloroethane-d4
 Concen: 52.805 ug/l
 RT: 8.583 min Scan# 1110
 Delta R.T. 0.001 min
 Lab File: VN076401.D
 Acq: 25 Jan 2023 14:58



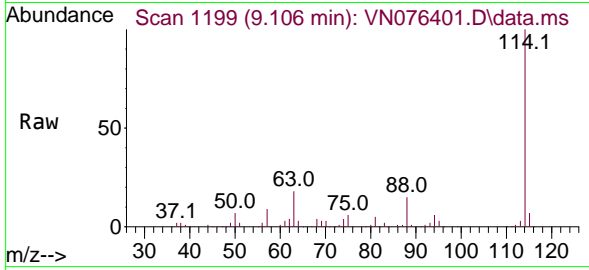
Tgt Ion: 65 Resp: 223422
 Ion Ratio Lower Upper
 65 100
 67 50.7 0.0 104.6





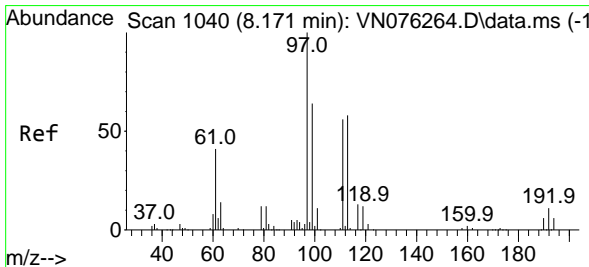
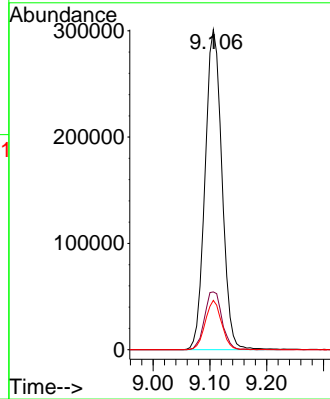
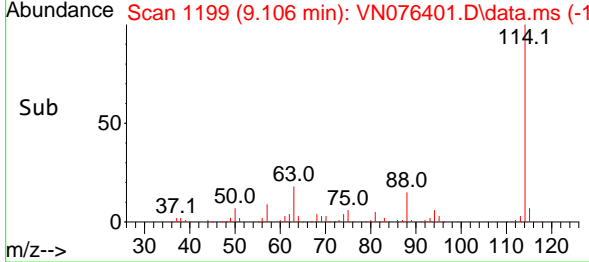
#34
 1,4-Difluorobenzene
 Concen: 50.000 ug/l
 RT: 9.106 min Scan# 1199
 Delta R.T. 0.000 min
 Lab File: VN076401.D
 Acq: 25 Jan 2023 14:58

Instrument : MSVOA_N
 ClientSampleId : BP-VPB-RW10-DUP-20230124

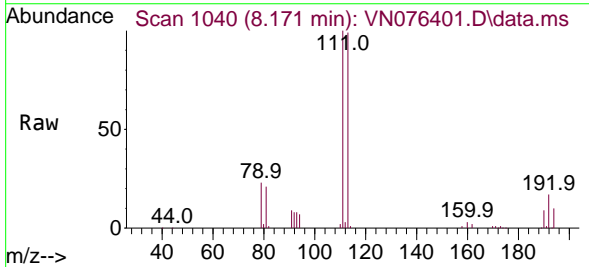


Tgt Ion:114 Resp: 619065

Ion	Ratio	Lower	Upper
114	100		
63	18.1	0.0	35.8
88	15.4	0.0	28.0

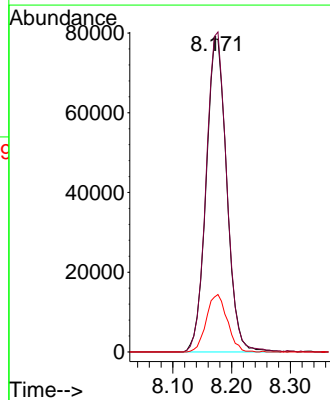
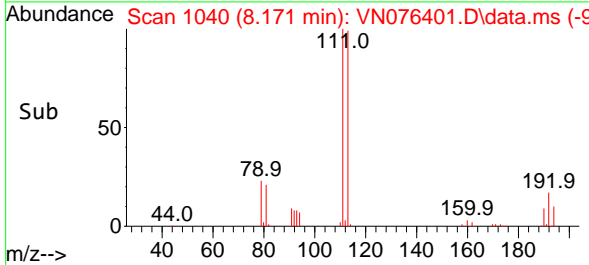


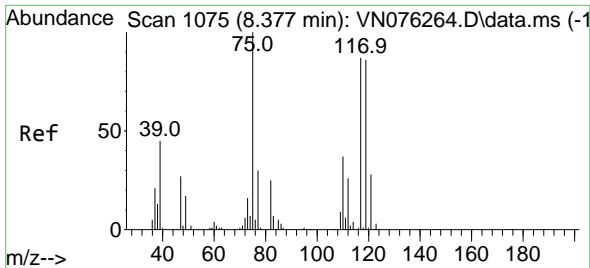
#35
 Dibromofluoromethane
 Concen: 49.516 ug/l
 RT: 8.171 min Scan# 1040
 Delta R.T. -0.000 min
 Lab File: VN076401.D
 Acq: 25 Jan 2023 14:58



Tgt Ion:113 Resp: 191752

Ion	Ratio	Lower	Upper
113	100		
111	101.5	82.7	124.1
192	18.6	15.6	23.4

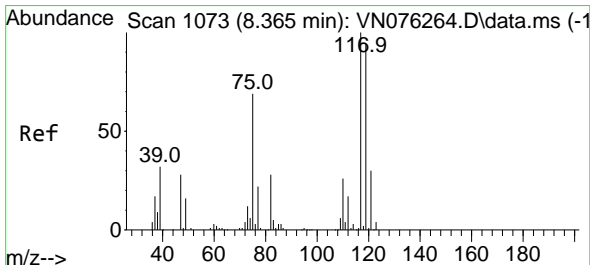
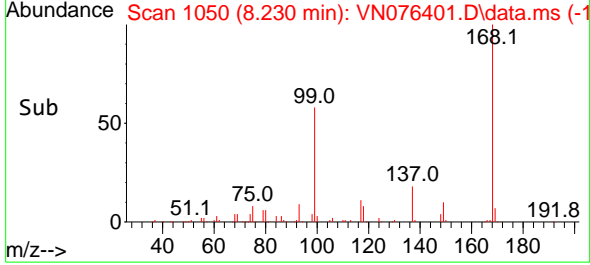
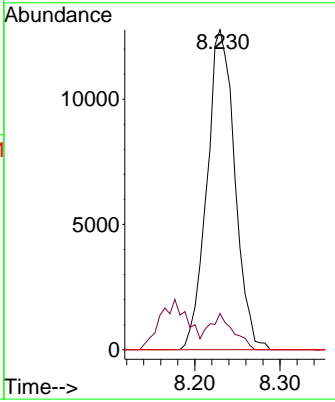
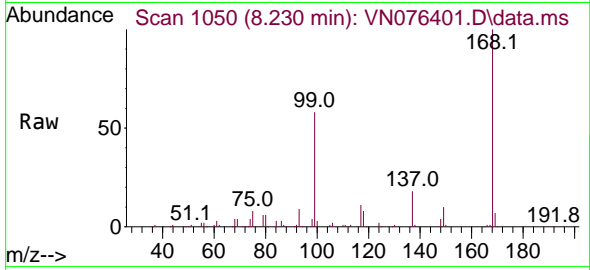




#36
 1,1-Dichloropropene
 Concen: 5.283 ug/l
 RT: 8.230 min Scan# 1050
 Delta R.T. -0.147 min
 Lab File: VN076401.D
 Acq: 25 Jan 2023 14:58

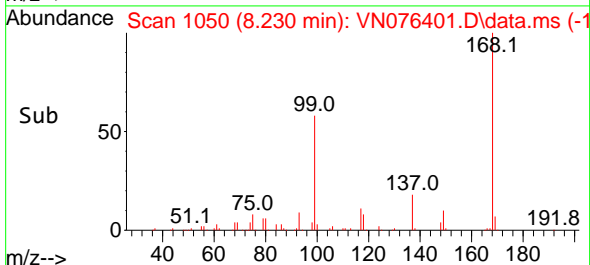
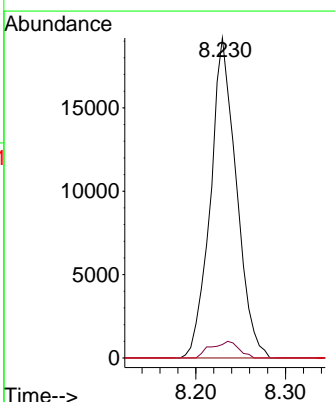
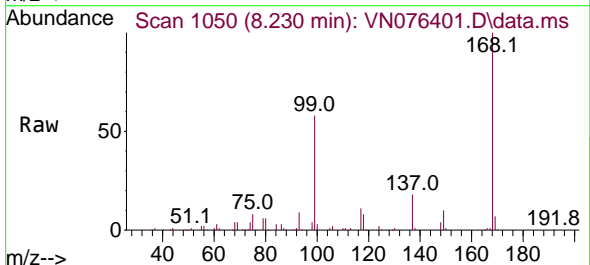
Instrument : MSVOA_N
 ClientSampleId : BP-VPB-RW10-DUP-20230124

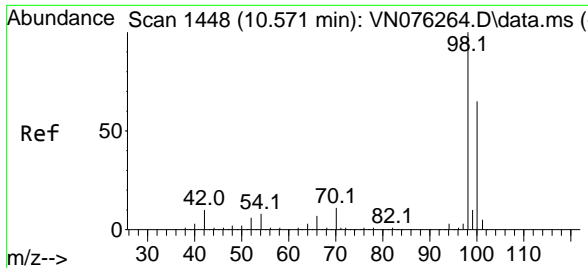
Tgt Ion	Resp	Lower	Upper
75	29073		
75	100		
110	9.8	18.8	56.3#
77	0.0	25.0	37.4#



#38
 Carbon Tetrachloride
 Concen: 6.285 ug/l
 RT: 8.230 min Scan# 1050
 Delta R.T. -0.135 min
 Lab File: VN076401.D
 Acq: 25 Jan 2023 14:58

Tgt Ion	Resp	Lower	Upper
117	38566		
117	100		
119	4.2	75.4	113.0#
121	0.0	24.2	36.2#

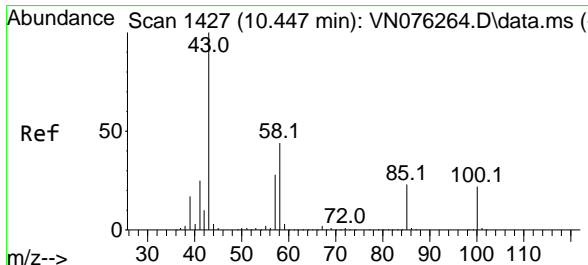
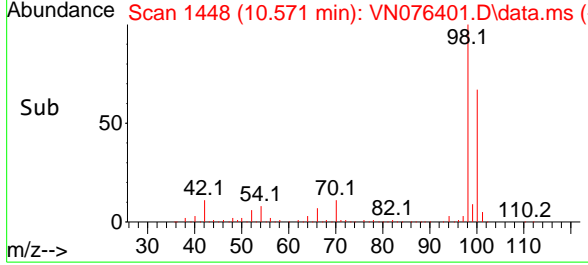
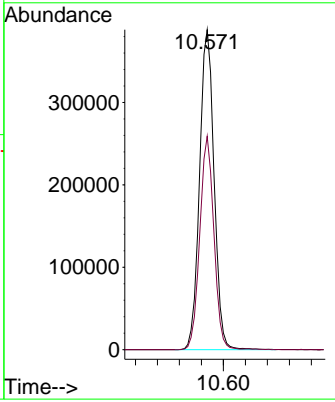
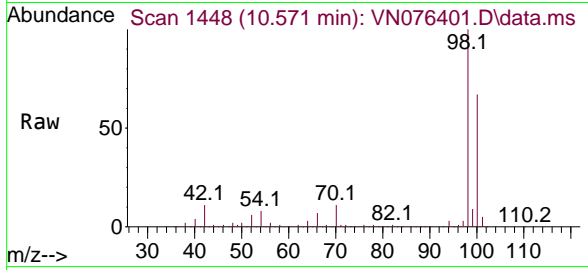




#50
 Toluene-d8
 Concen: 49.750 ug/l
 RT: 10.571 min Scan# 1448
 Delta R.T. -0.000 min
 Lab File: VN076401.D
 Acq: 25 Jan 2023 14:58

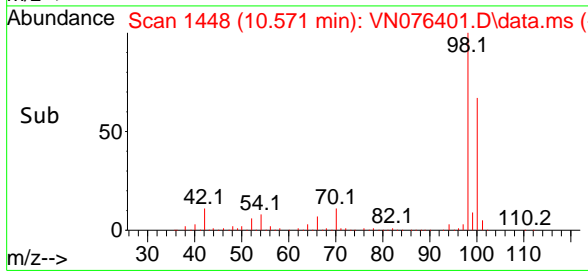
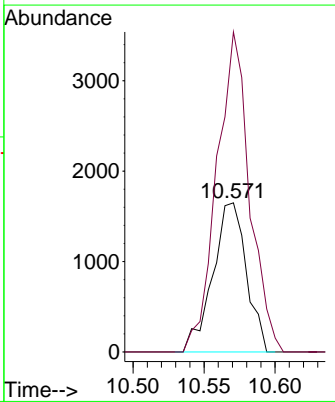
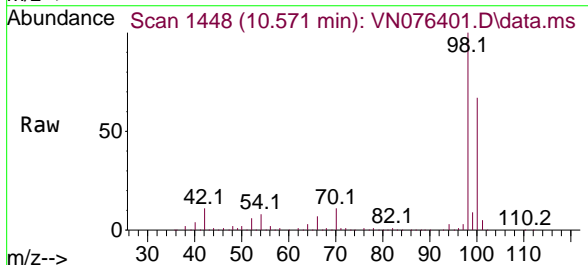
Instrument : MSVOA_N
 ClientSampleId : BP-VPB-RW10-DUP-20230124

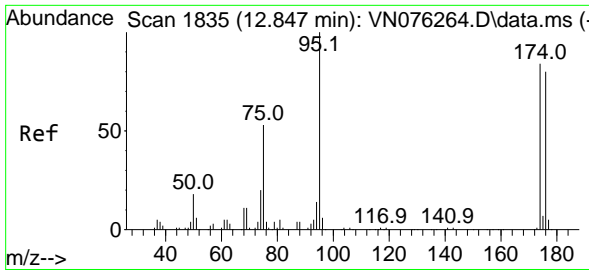
Tgt Ion: 98 Resp: 711504
 Ion Ratio Lower Upper
 98 100
 100 65.0 52.2 78.4



#51
 4-Methyl-2-Pentanone
 Concen: 0.644 ug/l
 RT: 10.571 min Scan# 1448
 Delta R.T. 0.124 min
 Lab File: VN076401.D
 Acq: 25 Jan 2023 14:58

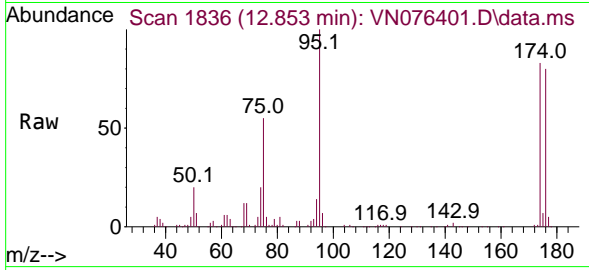
Tgt Ion: 43 Resp: 2715
 Ion Ratio Lower Upper
 43 100
 58 209.7 35.1 52.7#



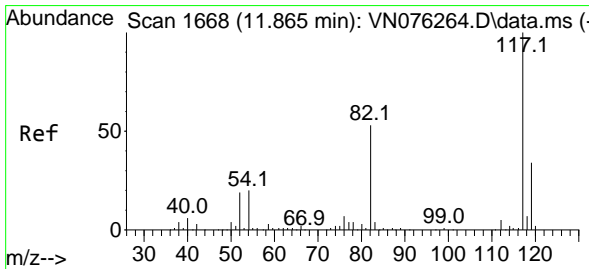
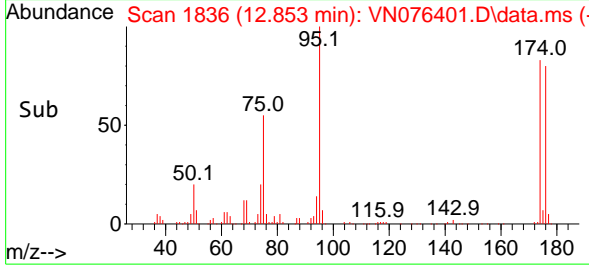
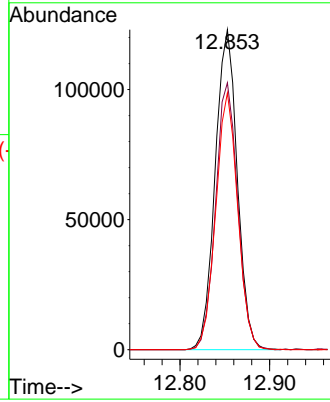


#62
 4-Bromofluorobenzene
 Concen: 45.089 ug/l
 RT: 12.853 min Scan# 1836
 Delta R.T. 0.006 min
 Lab File: VN076401.D
 Acq: 25 Jan 2023 14:58

Instrument : MSVOA_N
 ClientSampleId : BP-VPB-RW10-DUP-20230124

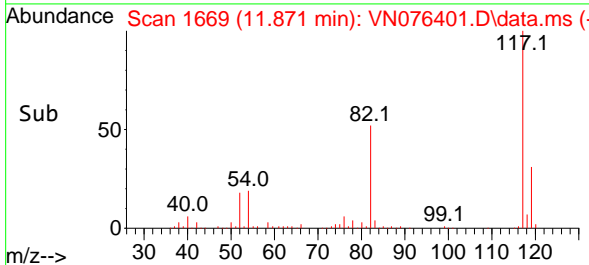
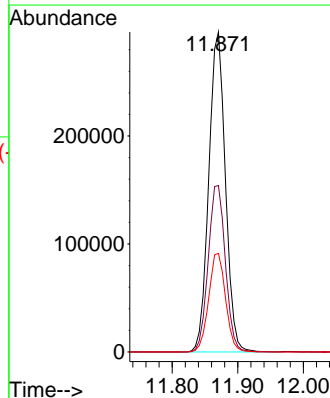
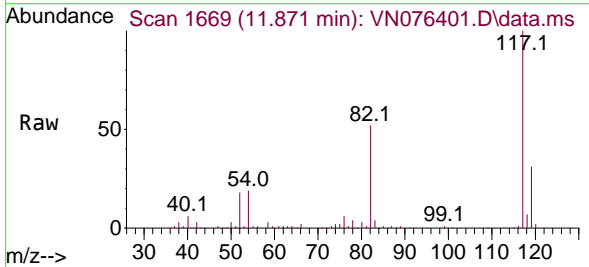


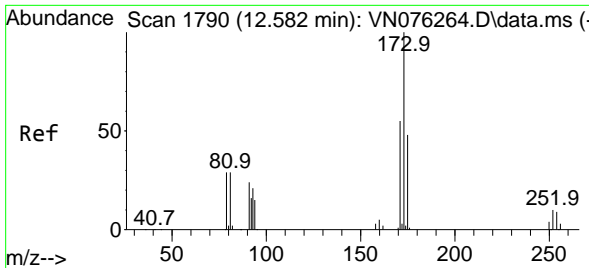
Tgt Ion: 95 Resp: 210513
 Ion Ratio Lower Upper
 95 100
 174 83.5 0.0 174.6
 176 79.7 0.0 167.8



#63
 Chlorobenzene-d5
 Concen: 50.000 ug/l
 RT: 11.871 min Scan# 1669
 Delta R.T. 0.006 min
 Lab File: VN076401.D
 Acq: 25 Jan 2023 14:58

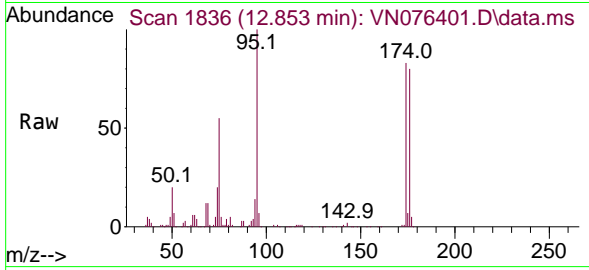
Tgt Ion: 117 Resp: 522820
 Ion Ratio Lower Upper
 117 100
 82 52.0 42.2 63.2
 119 30.8 26.9 40.3



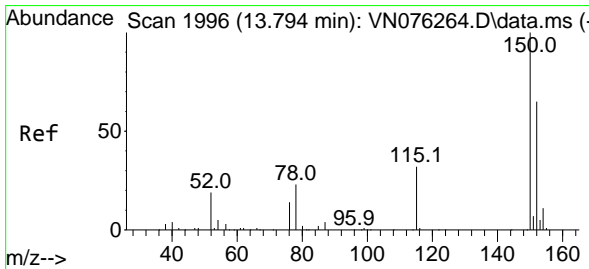
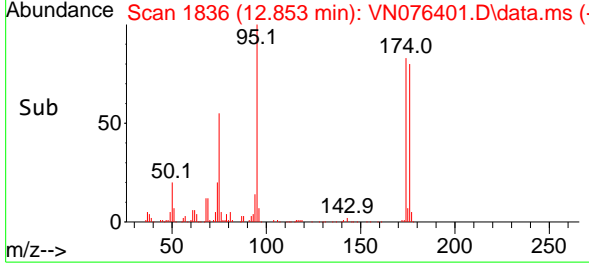
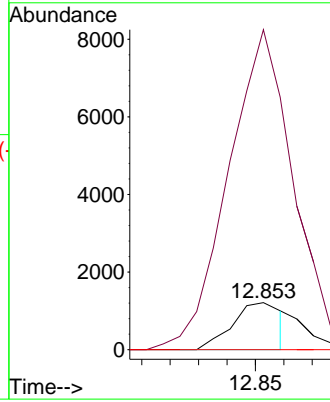


#71
 Bromoform
 Concen: 0.495 ug/l
 RT: 12.853 min Scan# 1836
 Delta R.T. 0.271 min
 Lab File: VN076401.D
 Acq: 25 Jan 2023 14:58

Instrument : MSVOA_N
 ClientSampleId : BP-VPB-RW10-DUP-20230124

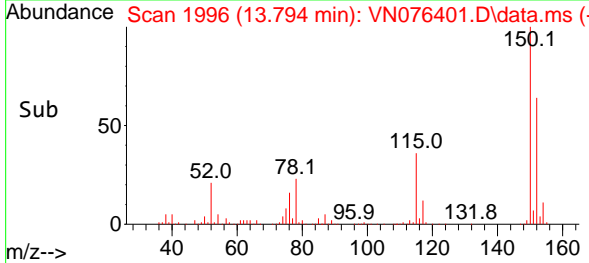
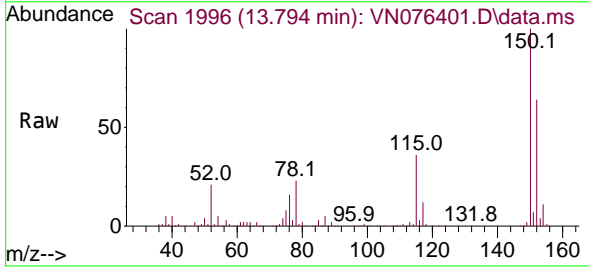
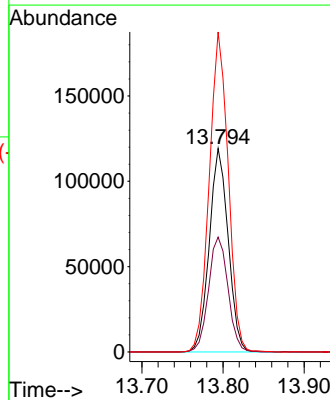


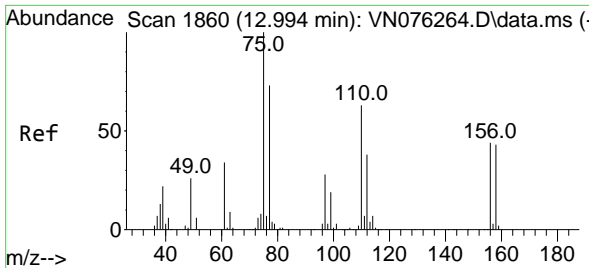
Tgt Ion:173 Resp: 1470
 Ion Ratio Lower Upper
 173 100
 175 730.0 24.1 72.4#
 254 0.0 0.0 0.0



#72
 1,4-Dichlorobenzene-d4
 Concen: 50.000 ug/l
 RT: 13.794 min Scan# 1996
 Delta R.T. -0.000 min
 Lab File: VN076401.D
 Acq: 25 Jan 2023 14:58

Tgt Ion:152 Resp: 192699
 Ion Ratio Lower Upper
 152 100
 115 58.2 29.6 88.9
 150 157.5 0.0 351.4

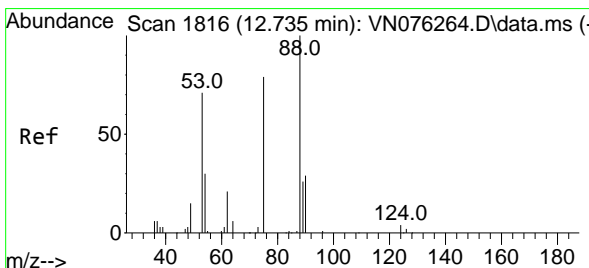
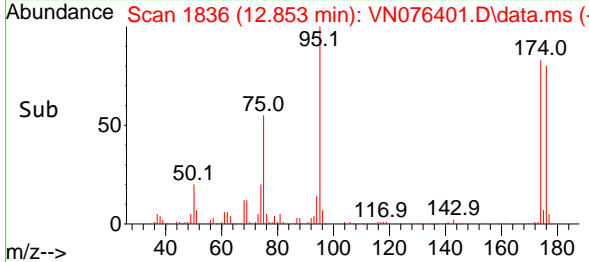
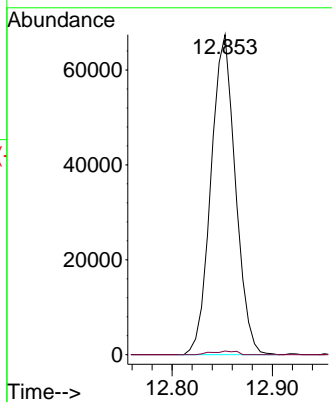
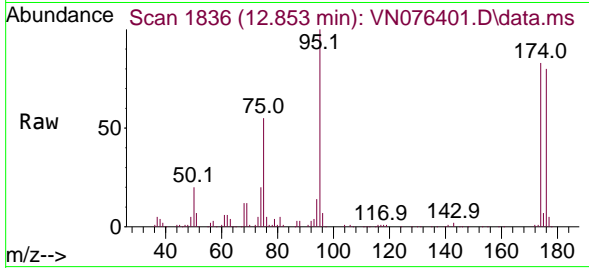




#76
 1,2,3-Trichloropropane
 Concen: 32.199 ug/l
 RT: 12.853 min Scan# 1836
 Delta R.T. -0.141 min
 Lab File: VN076401.D
 Acq: 25 Jan 2023 14:58

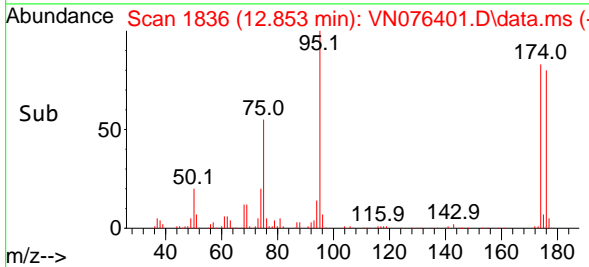
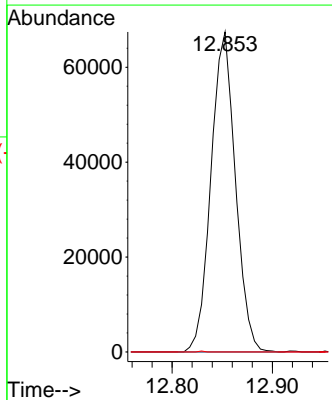
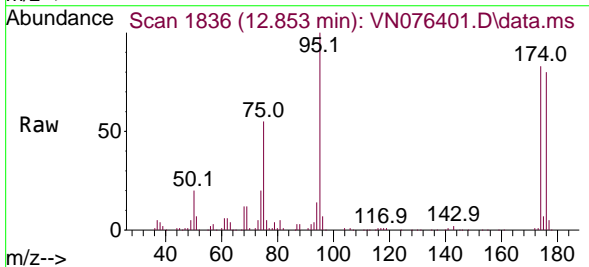
Instrument : MSVOA_N
 ClientSampleId : BP-VPB-RW10-DUP-20230124

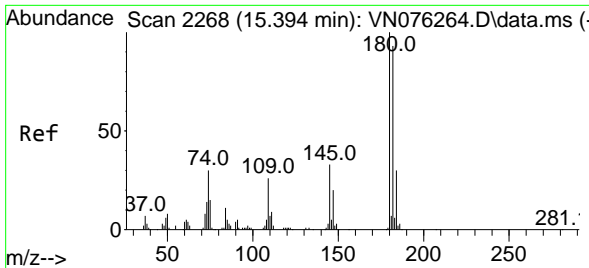
Tgt Ion: 75 Resp: 114219
 Ion Ratio Lower Upper
 75 100
 77 1.1 75.2 225.6#



#81
 trans-1,4-Dichloro-2-butene
 Concen: 98.621 ug/l
 RT: 12.853 min Scan# 1836
 Delta R.T. 0.118 min
 Lab File: VN076401.D
 Acq: 25 Jan 2023 14:58

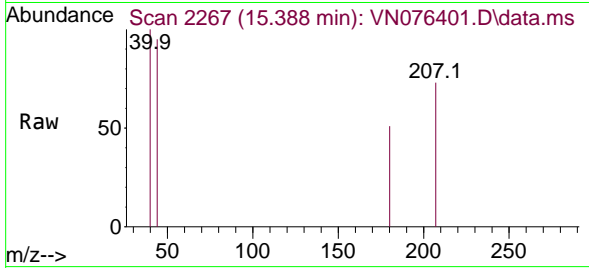
Tgt Ion: 75 Resp: 114219
 Ion Ratio Lower Upper
 75 100
 53 0.0 75.8 113.8#
 89 0.0 37.0 55.6#



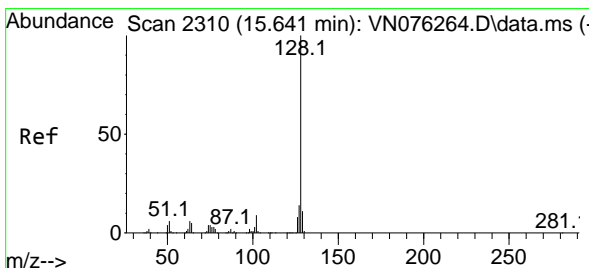
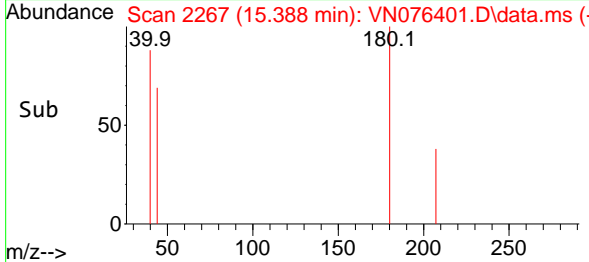
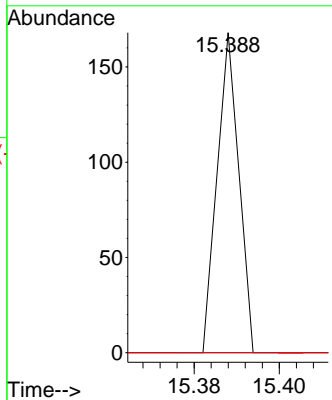


#93
 1,2,4-Trichlorobenzene
 Concen: 1.322 ug/l
 RT: 15.388 min Scan# 211
 Delta R.T. -0.006 min
 Lab File: VN076401.D
 Acq: 25 Jan 2023 14:58

Instrument : MSVOA_N
 ClientSampleId : BP-VPB-RW10-DUP-20230124



Tgt Ion:180 Resp: 59
 Ion Ratio Lower Upper
 180 100
 182 0.0 47.0 141.2#
 145 0.0 15.2 45.5#



#95
 Naphthalene
 Concen: 1.921 ug/l
 RT: 15.647 min Scan# 2311
 Delta R.T. 0.006 min
 Lab File: VN076401.D
 Acq: 25 Jan 2023 14:58

Tgt Ion:128 Resp: 853
 Ion Ratio Lower Upper
 128 100
 127 0.0 10.3 15.5#
 129 0.0 8.6 13.0#

