

Data Path : Z:\voasrv\HPCHEM1\MSVOA_N\Data\VN012623\
 Data File : VN076417.D
 Acq On : 26 Jan 2023 14:01
 Operator : JC\MD
 Sample : PB150465ZHE#02
 Misc : 5.0mL/MSVOA_N/WATER
 ALS Vial : 9 Sample Multiplier: 1

Instrument :
 MSVOA_N
 ClientSampleId :
 PB150465ZHE#02

Quant Time: Jan 27 00:35:05 2023
 Quant Method : Z:\voasrv\HPCHEM1\MSVOA_N\methods\82N011623W.M
 Quant Title : SW846 8260
 QLast Update : Tue Jan 17 03:59:22 2023
 Response via : Initial Calibration

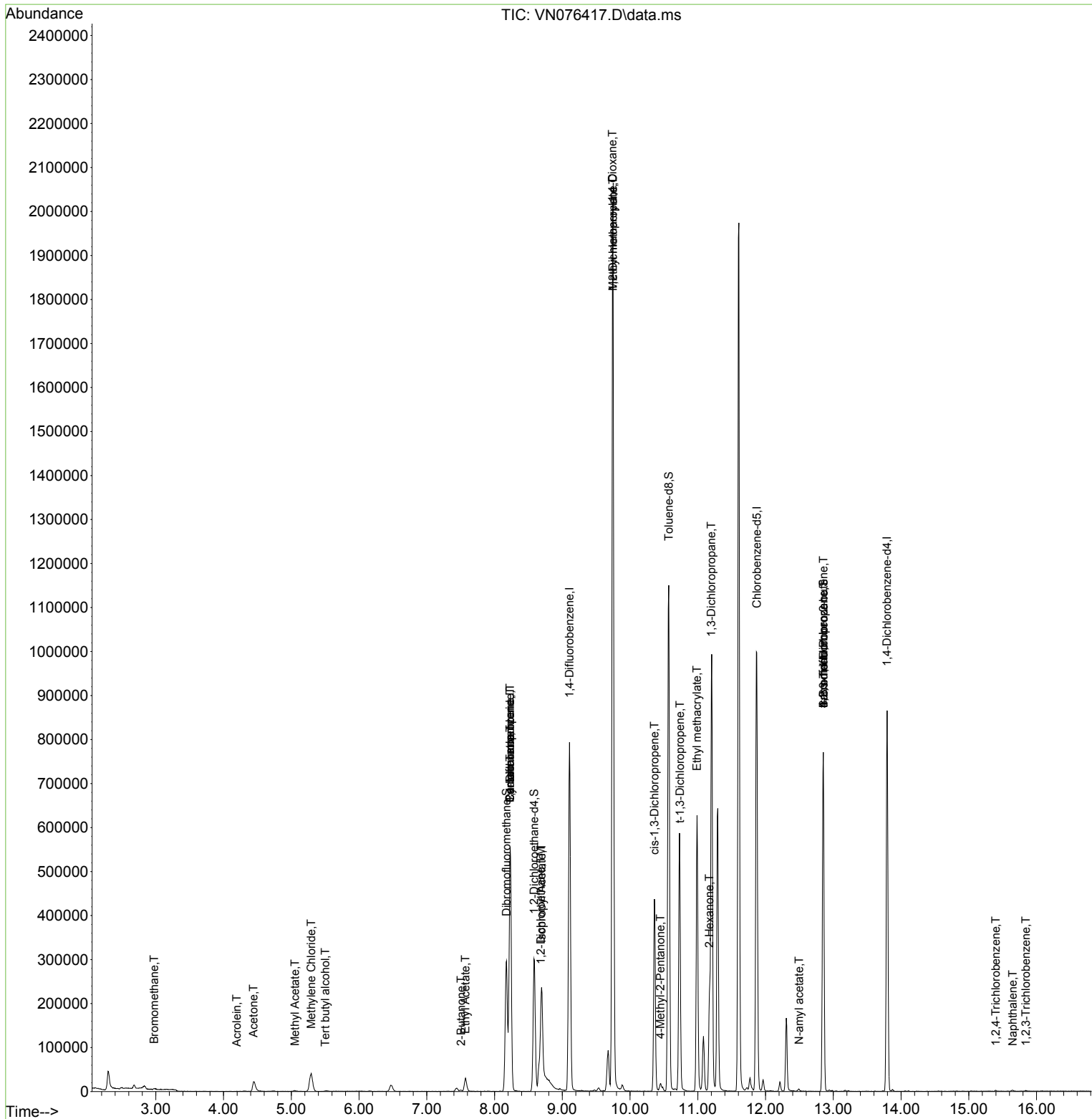
Compound	R.T.	QIon	Response	Conc	Units	Dev(Min)
Internal Standards						
1) Pentafluorobenzene	8.230	168	421938	50.000	ug/l	0.00
34) 1,4-Difluorobenzene	9.106	114	698779	50.000	ug/l	0.00
63) Chlorobenzene-d5	11.871	117	608906	50.000	ug/l	0.00
72) 1,4-Dichlorobenzene-d4	13.794	152	238093	50.000	ug/l	0.00
System Monitoring Compounds						
33) 1,2-Dichloroethane-d4	8.583	65	248522	52.604	ug/l	0.00
Spiked Amount	50.000	Range 74 - 125	Recovery	=	105.200%	
35) Dibromofluoromethane	8.177	113	212252	48.557	ug/l	0.00
Spiked Amount	50.000	Range 75 - 124	Recovery	=	97.120%	
50) Toluene-d8	10.571	98	813131	50.370	ug/l	0.00
Spiked Amount	50.000	Range 86 - 113	Recovery	=	100.740%	
62) 4-Bromofluorobenzene	12.853	95	255613	48.503	ug/l	0.00
Spiked Amount	50.000	Range 83 - 123	Recovery	=	97.000%	
Target Compounds						
						Qvalue
5) Bromomethane	2.977	94	906	0.202	ug/l #	61
11) Tert butyl alcohol	5.500	59	395	0.625	ug/l #	72
13) Acrolein	4.195	56	162	0.214	ug/l #	15
16) Acetone	4.442	43	43641	28.751	ug/l	90
18) Methyl Acetate	5.053	43	3883	0.757	ug/l #	71
20) Methylene Chloride	5.295	84	34511	7.185	ug/l	97
25) 2-Butanone	7.506	43	4023	1.739	ug/l	100
31) Cyclohexane	8.230	56	9078	1.251	ug/l #	14
36) 1,1-Dichloropropene	8.230	75	33447	5.385	ug/l #	49
37) Ethyl Acetate	7.571	43	42269	8.515	ug/l	98
38) Carbon Tetrachloride	8.230	117	44206	6.382	ug/l #	17
42) 1,2-Dichloroethane	8.683	62	1579	0.248	ug/l	84
43) Isopropyl Acetate	8.694	43	373780	46.118	ug/l #	72
45) 1,2-Dichloropropane	9.747	63	2454	0.552	ug/l #	42
48) Methyl methacrylate	9.747	41	180325	46.997	ug/l #	36
49) 1,4-Dioxane	9.741	88	334	4.125	ug/l #	1
51) 4-Methyl-2-Pentanone	10.447	43	10512	2.209	ug/l	96
53) t-1,3-Dichloropropene	10.735	75	1554	0.250	ug/l #	60
54) cis-1,3-Dichloropropene	10.359	75	83766	11.730	ug/l #	64
56) Ethyl methacrylate	10.988	69	2010	0.328	ug/l #	1
57) 1,3-Dichloropropane	11.200	76	11701	1.517	ug/l #	42
59) 2-Hexanone	11.171	43	169766	49.239	ug/l #	21
71) Bromoform	12.853	173	1586	0.459	ug/l #	1
74) N-amyl acetate	12.494	43	3000	0.566	ug/l #	42
76) 1,2,3-Trichloropropane	12.853	75	137871	31.434	ug/l #	1
77) Bromobenzene	12.971	156	207	Below Cal	#	1
81) trans-1,4-Dichloro-2-b...	12.853	75	137871	96.346	ug/l #	11
93) 1,2,4-Trichlorobenzene	15.400	180	882	1.511	ug/l	95
95) Naphthalene	15.647	128	3220	2.090	ug/l #	78
96) 1,2,3-Trichlorobenzene	15.841	180	780	1.345	ug/l #	82

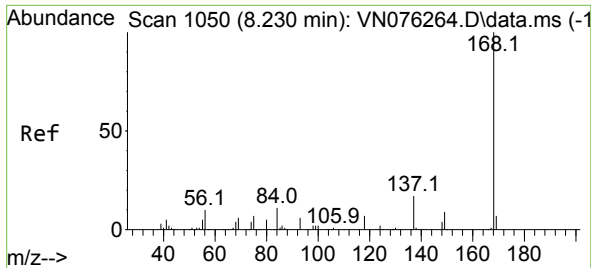
(#) = qualifier out of range (m) = manual integration (+) = signals summed

Data Path : Z:\voasrv\HPCHEM1\MSVOA_N\Data\VN012623\
 Data File : VN076417.D
 Acq On : 26 Jan 2023 14:01
 Operator : JC\MD
 Sample : PB150465ZHE#02
 Misc : 5.0mL/MSVOA_N/WATER
 ALS Vial : 9 Sample Multiplier: 1

Instrument :
 MSVOA_N
 ClientSampleId :
 PB150465ZHE#02

Quant Time: Jan 27 00:35:05 2023
 Quant Method : Z:\voasrv\HPCHEM1\MSVOA_N\methods\82N011623W.M
 Quant Title : SW846 8260
 QLast Update : Tue Jan 17 03:59:22 2023
 Response via : Initial Calibration

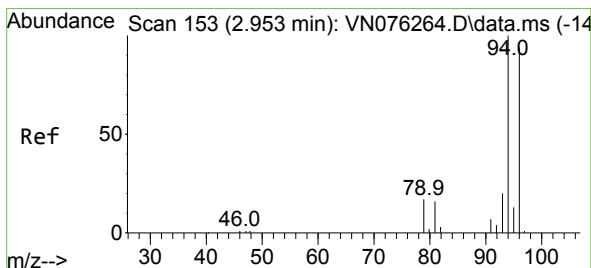
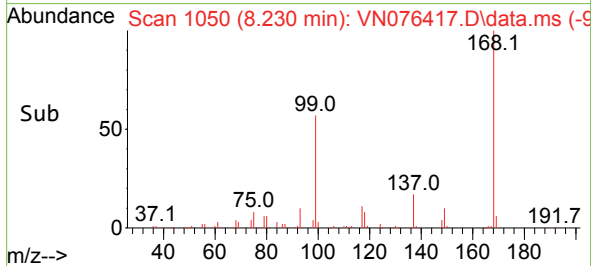
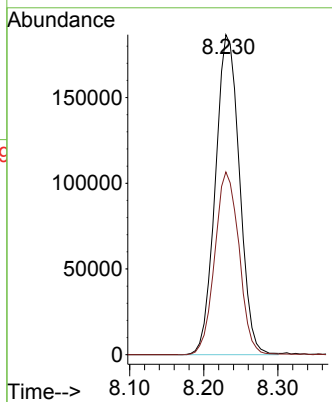
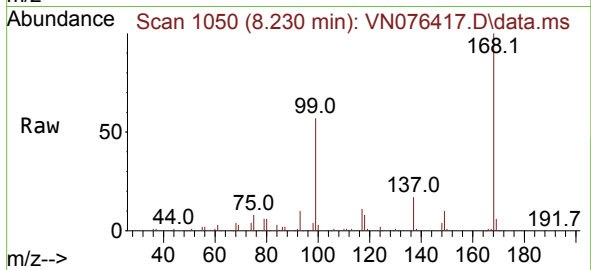




#1
 Pentafluorobenzene
 Concen: 50.000 ug/l
 RT: 8.230 min Scan# 10
 Delta R.T. -0.000 min
 Lab File: VN076417.D
 Acq: 26 Jan 2023 14:01

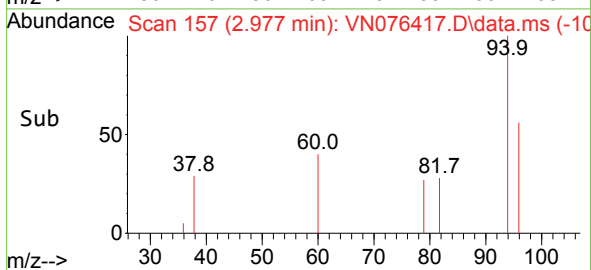
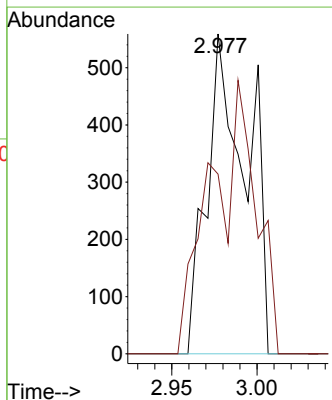
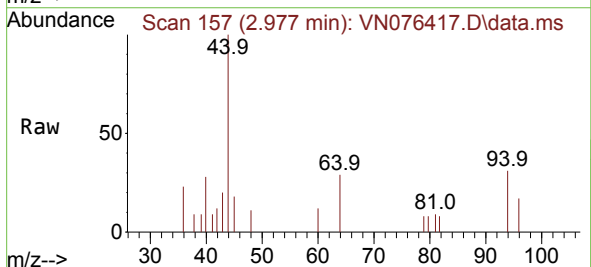
Instrument :
 MSVOA_N
 ClientSampleId :
 PB150465ZHE#02

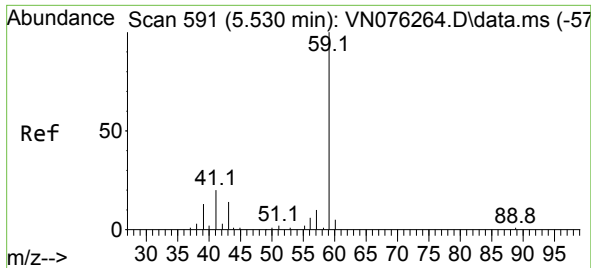
Tgt Ion:168 Resp: 421938
 Ion Ratio Lower Upper
 168 100
 99 57.1 41.6 62.4



#5
 Bromomethane
 Concen: 0.202 ug/l
 RT: 2.977 min Scan# 157
 Delta R.T. 0.024 min
 Lab File: VN076417.D
 Acq: 26 Jan 2023 14:01

Tgt Ion: 94 Resp: 906
 Ion Ratio Lower Upper
 94 100
 96 56.2 75.1 112.7#

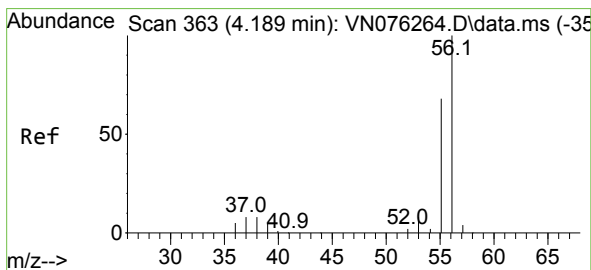
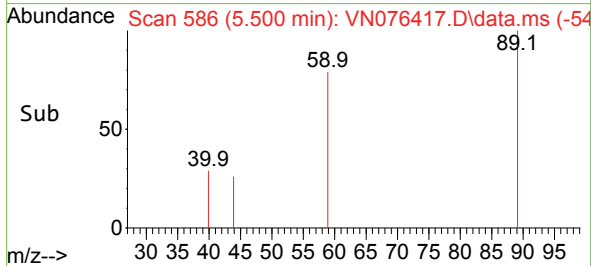
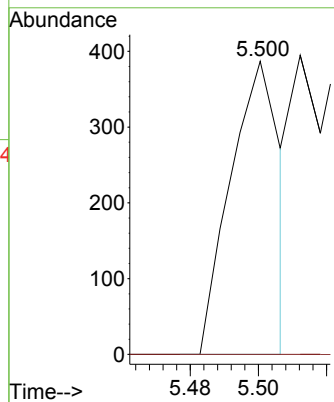
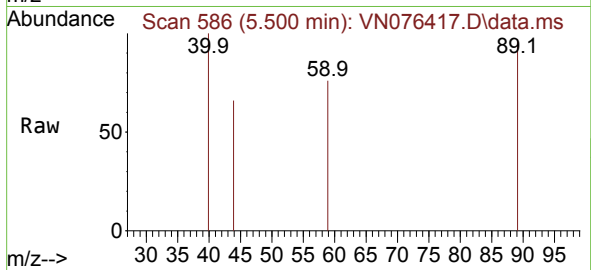




#11
 Tert butyl alcohol
 Concen: 0.625 ug/l
 RT: 5.500 min Scan# 51
 Delta R.T. -0.030 min
 Lab File: VN076417.D
 Acq: 26 Jan 2023 14:01

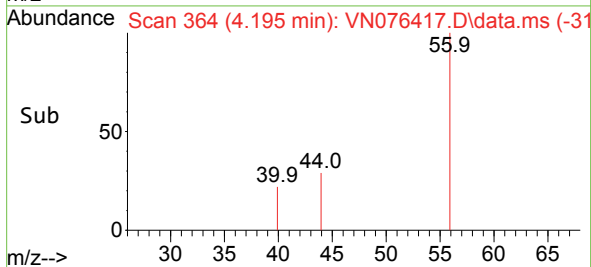
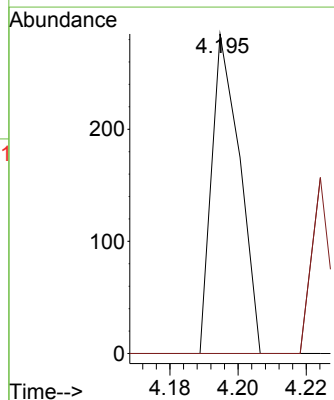
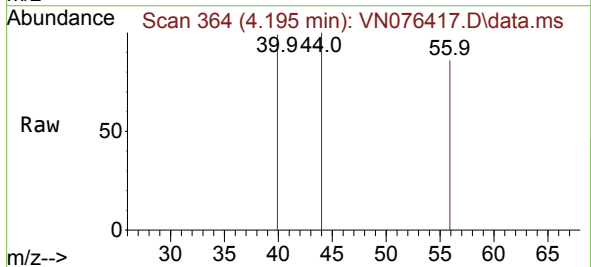
Instrument : MSVOA_N
 ClientSampleId : PB150465ZHE#02

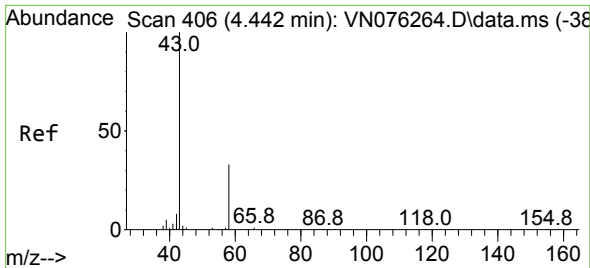
Tgt Ion: 59 Resp: 395
 Ion Ratio Lower Upper
 59 100
 57 0.0 8.5 12.7#



#13
 Acrolein
 Concen: 0.214 ug/l
 RT: 4.195 min Scan# 364
 Delta R.T. 0.006 min
 Lab File: VN076417.D
 Acq: 26 Jan 2023 14:01

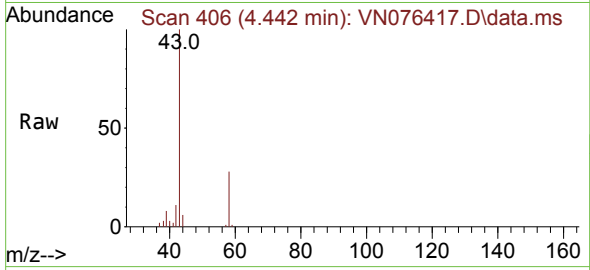
Tgt Ion: 56 Resp: 162
 Ion Ratio Lower Upper
 56 100
 55 0.0 55.8 83.6#



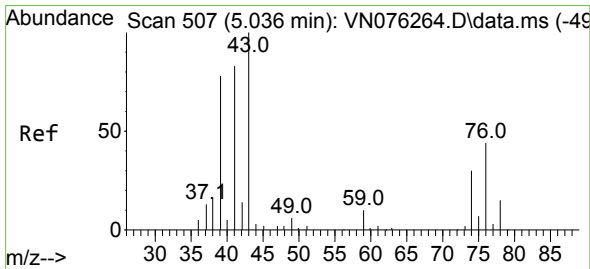
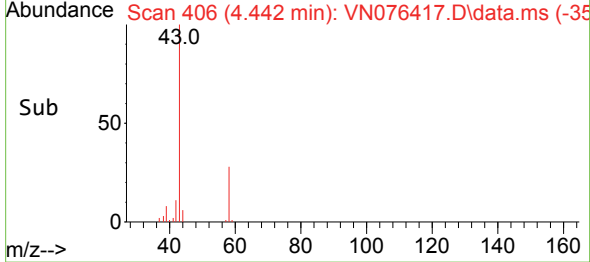
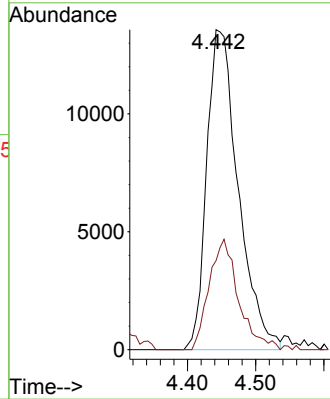


#16
 Acetone
 Concen: 28.751 ug/l
 RT: 4.442 min Scan# 406
 Delta R.T. -0.000 min
 Lab File: VN076417.D
 Acq: 26 Jan 2023 14:01

Instrument : MSVOA_N
 ClientSampleId : PB150465ZHE#02

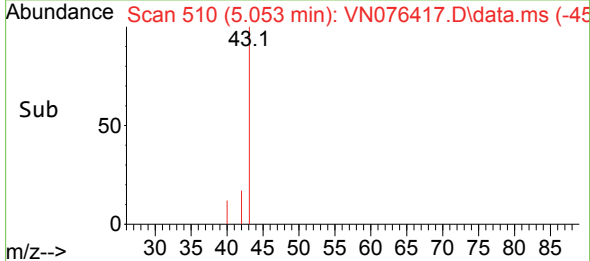
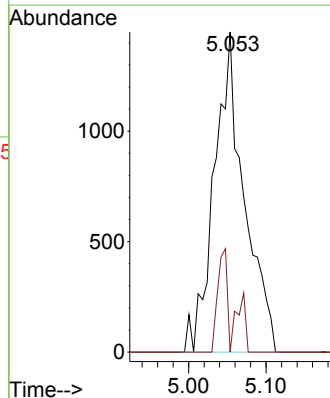
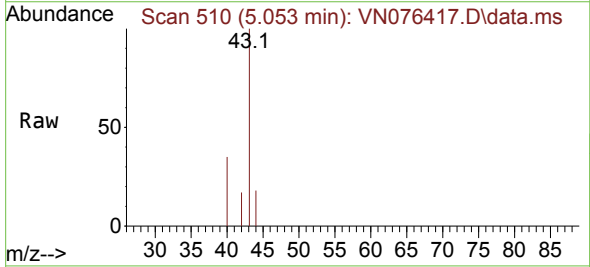


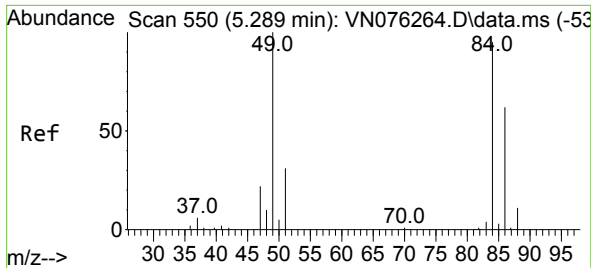
Tgt Ion: 43 Resp: 43641
 Ion Ratio Lower Upper
 43 100
 58 27.8 26.7 40.1



#18
 Methyl Acetate
 Concen: 0.757 ug/l
 RT: 5.053 min Scan# 510
 Delta R.T. 0.017 min
 Lab File: VN076417.D
 Acq: 26 Jan 2023 14:01

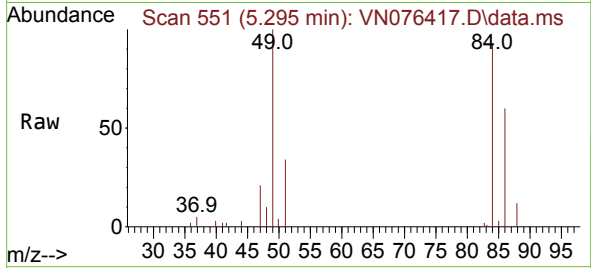
Tgt Ion: 43 Resp: 3883
 Ion Ratio Lower Upper
 43 100
 74 13.4 23.3 34.9#





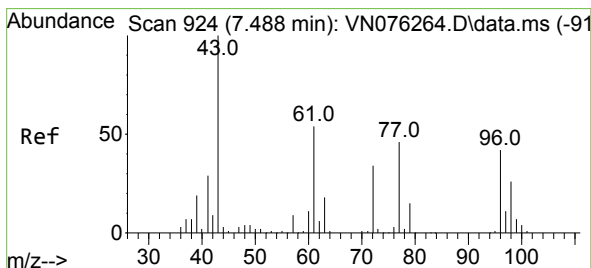
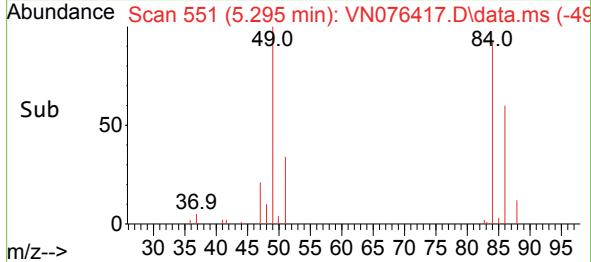
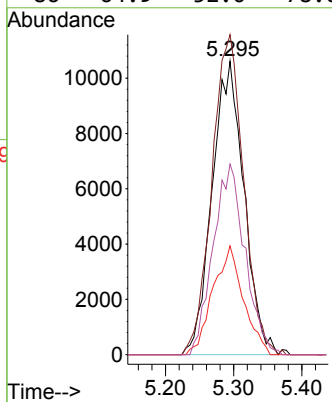
#20
 Methylene Chloride
 Concen: 7.185 ug/l
 RT: 5.295 min Scan# 511
 Delta R.T. 0.006 min
 Lab File: VN076417.D
 Acq: 26 Jan 2023 14:01

Instrument : MSVOA_N
 ClientSampleId : PB150465ZHE#02



Tgt Ion: 84 Resp: 34511

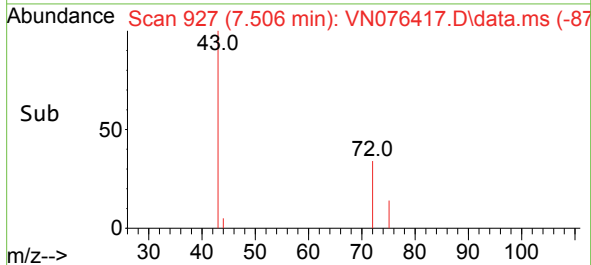
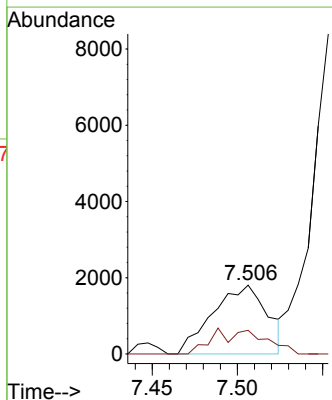
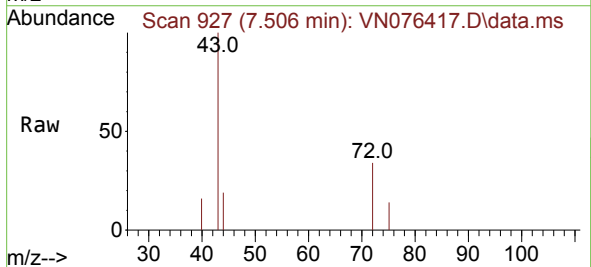
Ion	Ratio	Lower	Upper
84	100		
49	109.0	84.5	126.7
51	37.1	26.0	39.0
86	64.9	52.0	78.0

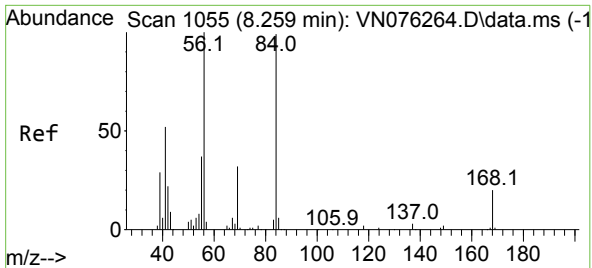


#25
 2-Butanone
 Concen: 1.739 ug/l
 RT: 7.506 min Scan# 927
 Delta R.T. 0.018 min
 Lab File: VN076417.D
 Acq: 26 Jan 2023 14:01

Tgt Ion: 43 Resp: 4023

Ion	Ratio	Lower	Upper
43	100		
72	34.5	27.4	41.2



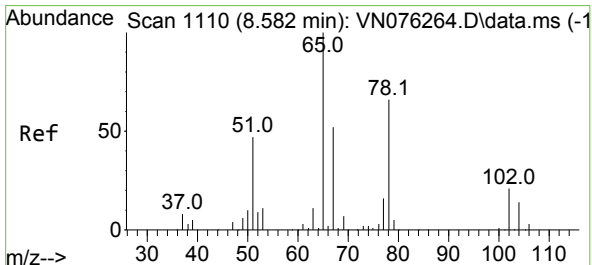
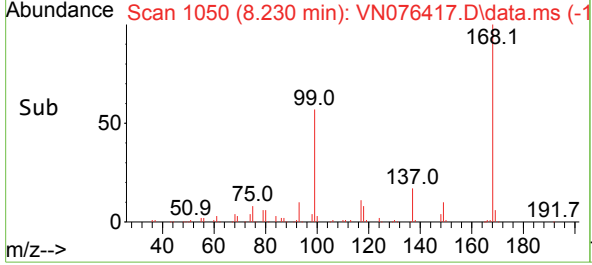
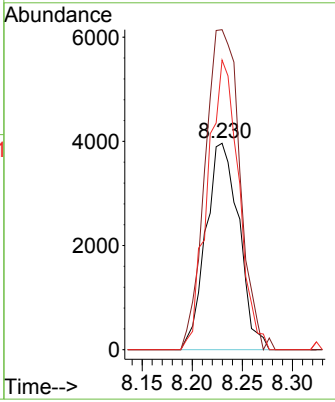
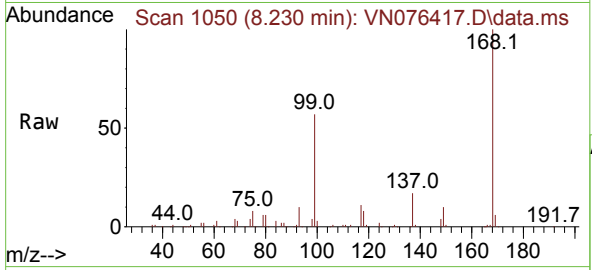


#31
 Cyclohexane
 Concen: 1.251 ug/l
 RT: 8.230 min Scan# 1050
 Delta R.T. -0.029 min
 Lab File: VN076417.D
 Acq: 26 Jan 2023 14:01

Instrument : MSVOA_N
 ClientSampleId : PB150465ZHE#02

Tgt Ion: 56 Resp: 9078

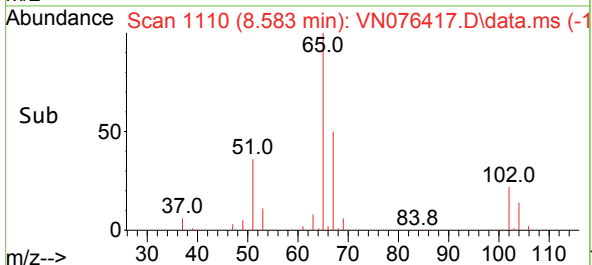
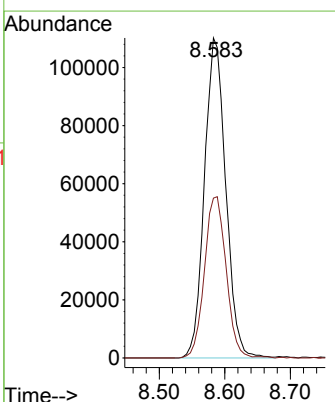
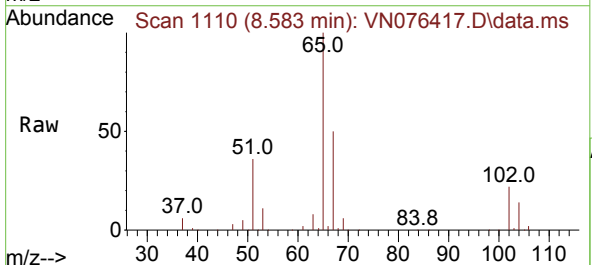
Ion	Ratio	Lower	Upper
56	100		
69	155.1	25.8	38.8#
84	140.3	79.0	118.4#

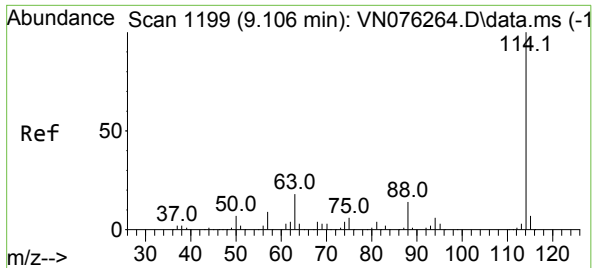


#33
 1,2-Dichloroethane-d4
 Concen: 52.604 ug/l
 RT: 8.583 min Scan# 1110
 Delta R.T. 0.001 min
 Lab File: VN076417.D
 Acq: 26 Jan 2023 14:01

Tgt Ion: 65 Resp: 248522

Ion	Ratio	Lower	Upper
65	100		
67	51.4	0.0	104.6



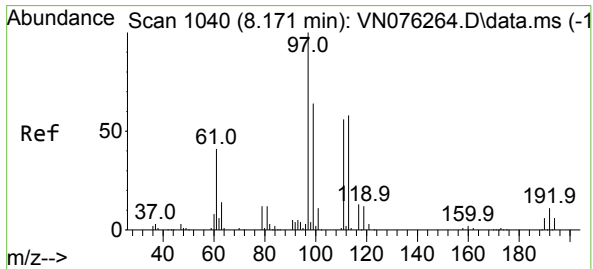
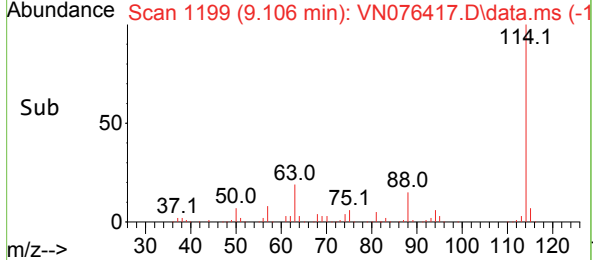
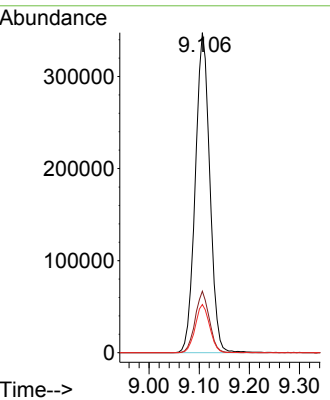
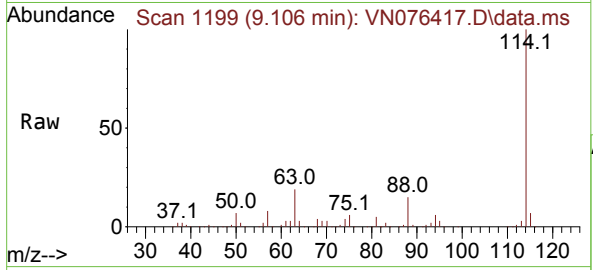


#34
 1,4-Difluorobenzene
 Concen: 50.000 ug/l
 RT: 9.106 min Scan# 1199
 Delta R.T. 0.000 min
 Lab File: VN076417.D
 Acq: 26 Jan 2023 14:01

Instrument : MSVOA_N
 ClientSampleId : PB150465ZHE#02

Tgt Ion:114 Resp: 698779

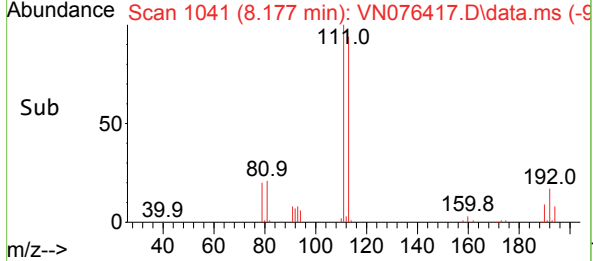
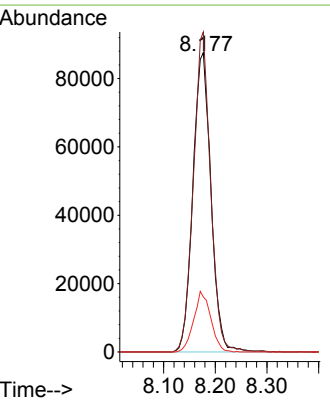
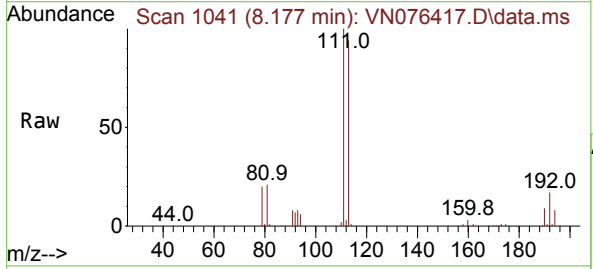
Ion	Ratio	Lower	Upper
114	100		
63	19.2	0.0	35.8
88	15.0	0.0	28.0

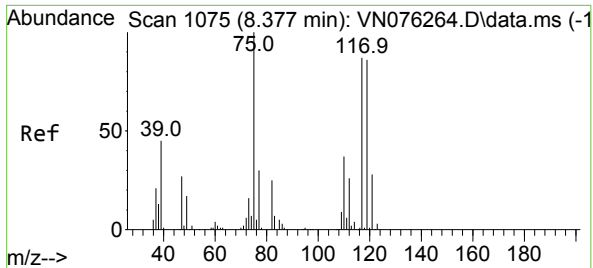


#35
 Dibromofluoromethane
 Concen: 48.557 ug/l
 RT: 8.177 min Scan# 1041
 Delta R.T. 0.006 min
 Lab File: VN076417.D
 Acq: 26 Jan 2023 14:01

Tgt Ion:113 Resp: 212252

Ion	Ratio	Lower	Upper
113	100		
111	101.9	82.7	124.1
192	19.2	15.6	23.4

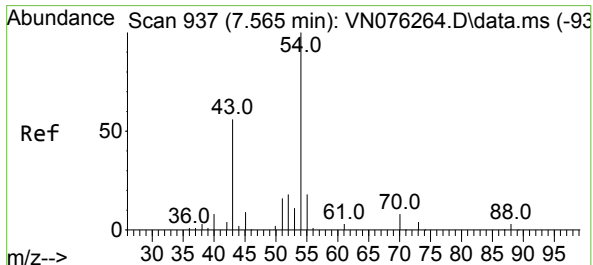
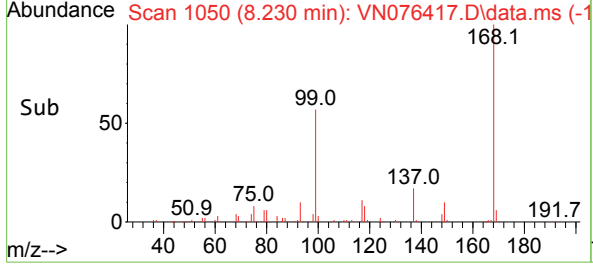
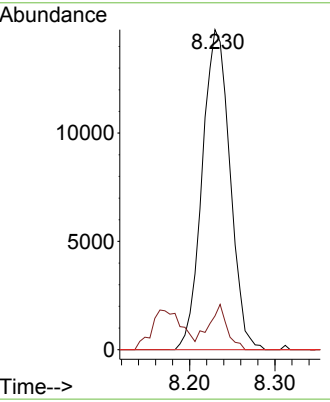
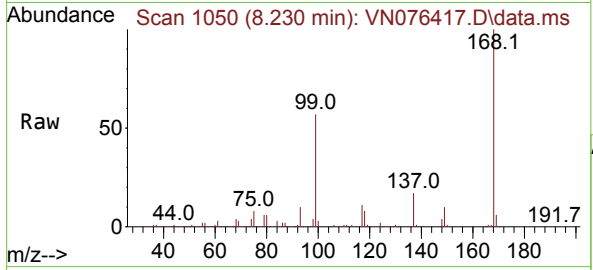




#36
 1,1-Dichloropropene
 Concen: 5.385 ug/l
 RT: 8.230 min Scan# 1075
 Delta R.T. -0.147 min
 Lab File: VN076417.D
 Acq: 26 Jan 2023 14:01

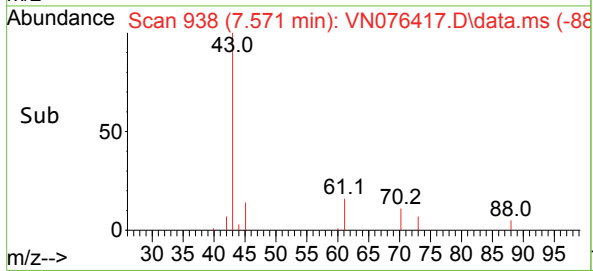
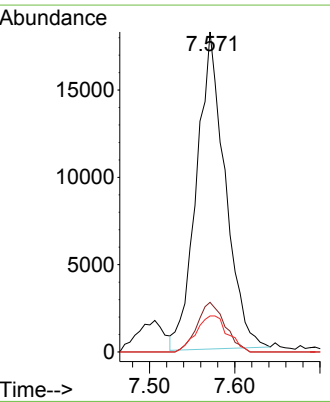
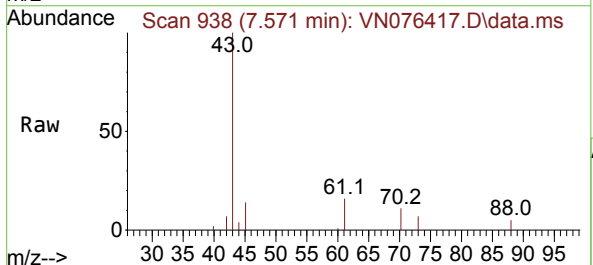
Instrument : MSVOA_N
 ClientSampleId : PB150465ZHE#02

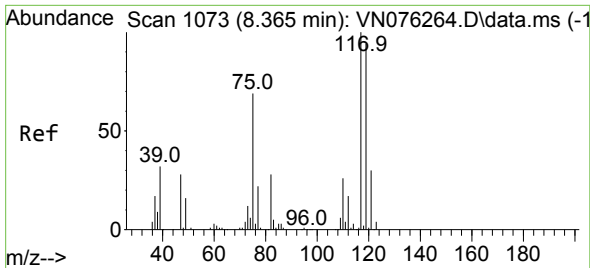
Tgt Ion	Resp	Lower	Upper
75	33447		
75	100		
110	9.5	18.8	56.3#
77	0.0	25.0	37.4#



#37
 Ethyl Acetate
 Concen: 8.515 ug/l
 RT: 7.571 min Scan# 938
 Delta R.T. 0.006 min
 Lab File: VN076417.D
 Acq: 26 Jan 2023 14:01

Tgt Ion	Resp	Lower	Upper
43	42269		
43	100		
61	15.3	11.1	16.7
70	12.5	10.0	15.0

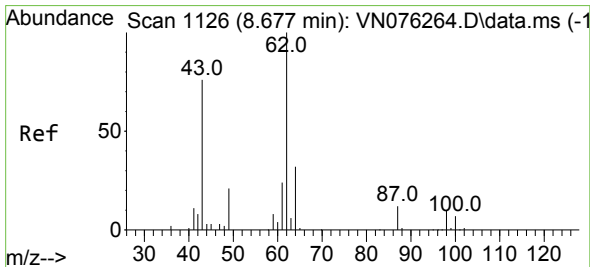
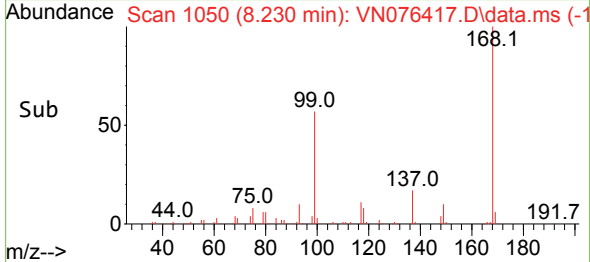
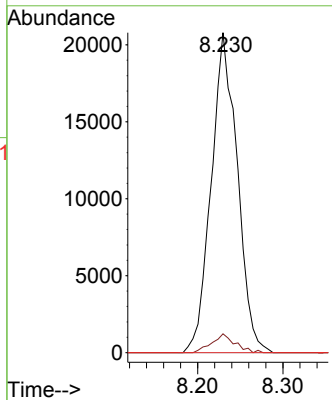
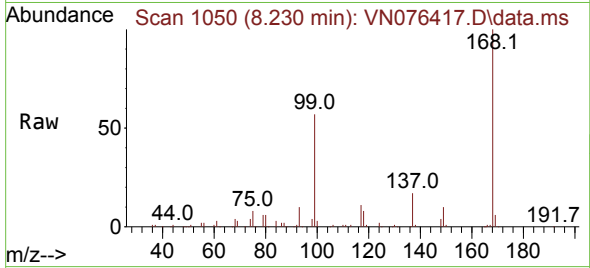




#38
 Carbon Tetrachloride
 Concen: 6.382 ug/l
 RT: 8.230 min Scan# 1073
 Delta R.T. -0.135 min
 Lab File: VN076417.D
 Acq: 26 Jan 2023 14:01

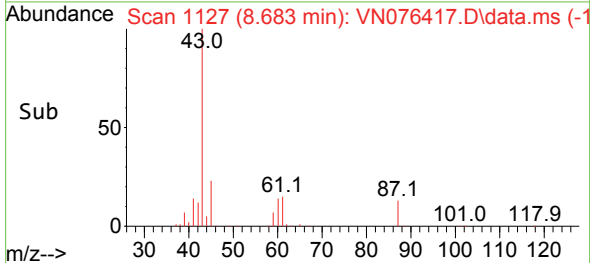
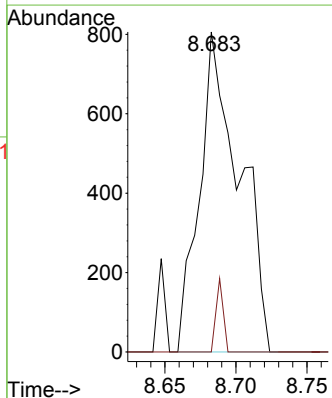
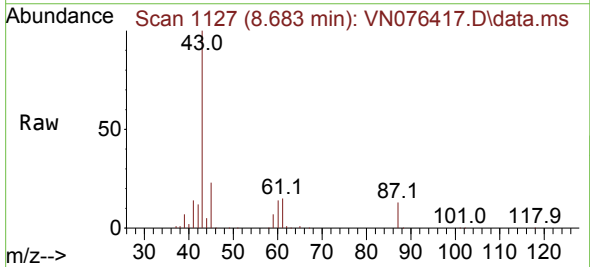
Instrument : MSVOA_N
 ClientSampleId : PB150465ZHE#02

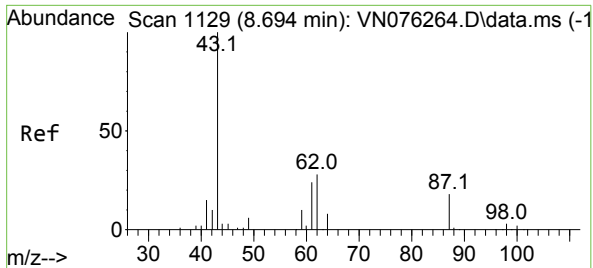
Tgt Ion:117 Resp: 44206
 Ion Ratio Lower Upper
 117 100
 119 5.9 75.4 113.0#
 121 0.0 24.2 36.2#



#42
 1,2-Dichloroethane
 Concen: 0.248 ug/l
 RT: 8.683 min Scan# 1127
 Delta R.T. 0.006 min
 Lab File: VN076417.D
 Acq: 26 Jan 2023 14:01

Tgt Ion: 62 Resp: 1579
 Ion Ratio Lower Upper
 62 100
 98 4.1 0.0 20.4

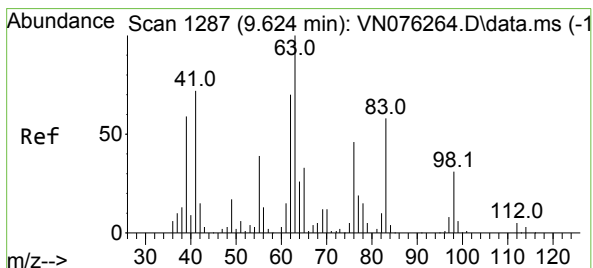
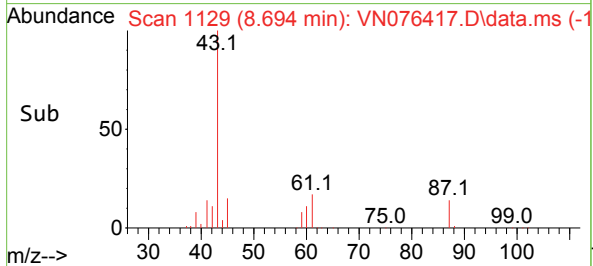
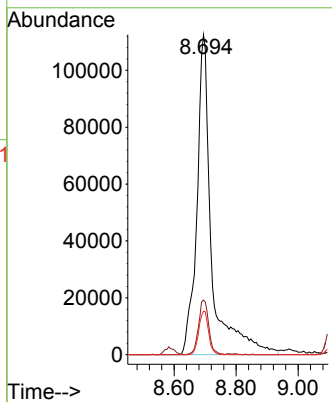
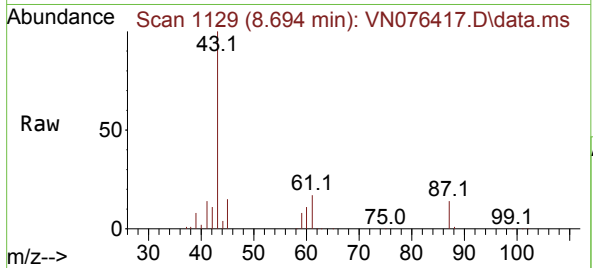




#43
 Isopropyl Acetate
 Concen: 46.118 ug/l
 RT: 8.694 min Scan# 1129
 Delta R.T. 0.000 min
 Lab File: VN076417.D
 Acq: 26 Jan 2023 14:01

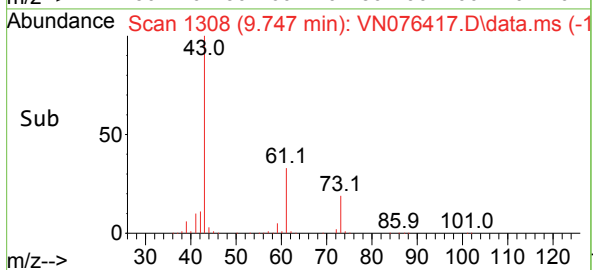
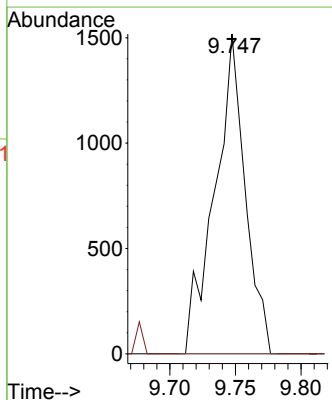
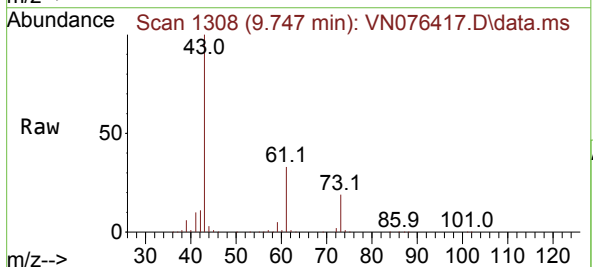
Instrument : MSVOA_N
 ClientSampleId : PB150465ZHE#02

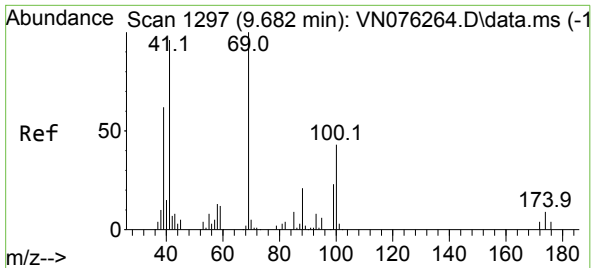
Tgt Ion: 43 Resp: 373780
 Ion Ratio Lower Upper
 43 100
 61 11.8 23.5 35.3#
 87 8.9 13.8 20.6#



#45
 1,2-Dichloropropane
 Concen: 0.552 ug/l
 RT: 9.747 min Scan# 1308
 Delta R.T. 0.123 min
 Lab File: VN076417.D
 Acq: 26 Jan 2023 14:01

Tgt Ion: 63 Resp: 2454
 Ion Ratio Lower Upper
 63 100
 65 0.0 26.4 39.6#

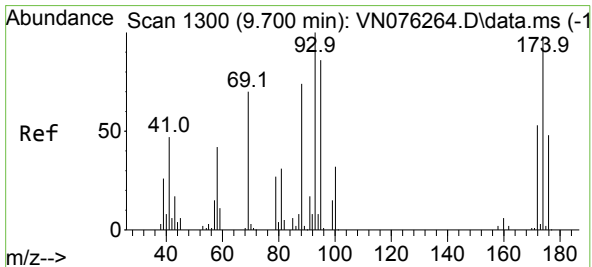
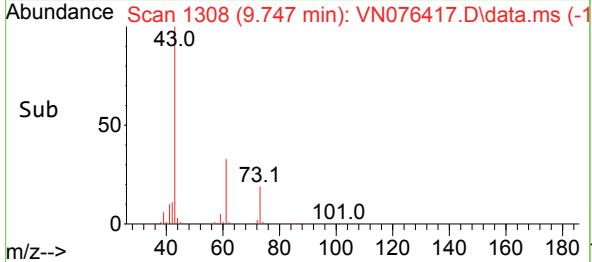
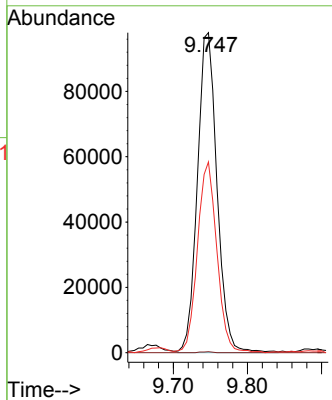
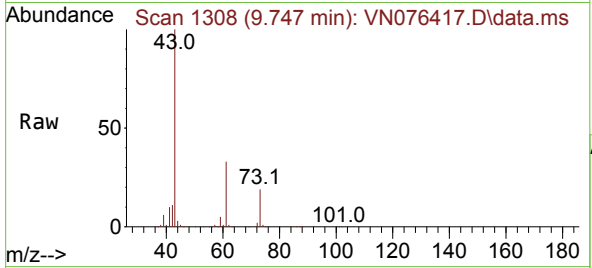




#48
 Methyl methacrylate
 Concen: 46.997 ug/l
 RT: 9.747 min Scan# 11
 Delta R.T. 0.065 min
 Lab File: VN076417.D
 Acq: 26 Jan 2023 14:01

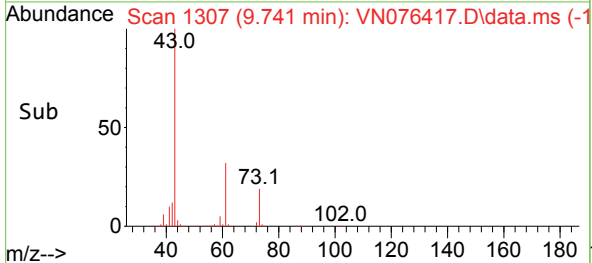
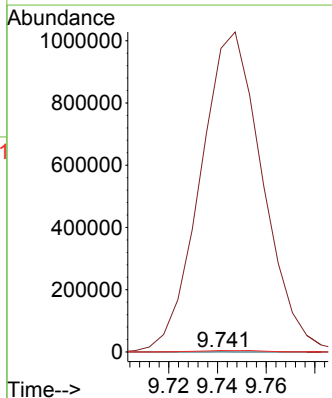
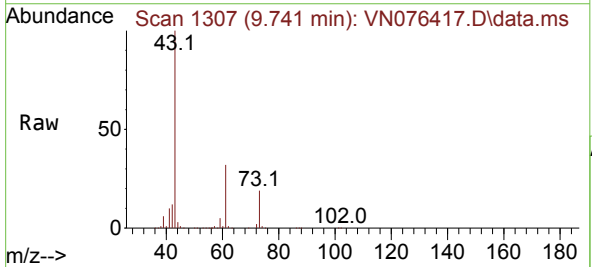
Instrument :
 MSVOA_N
 ClientSampleId :
 PB150465ZHE#02

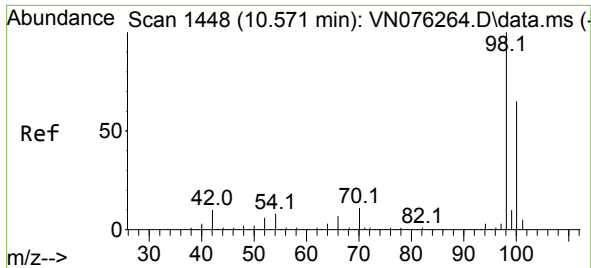
Tgt Ion: 41 Resp: 180325
 Ion Ratio Lower Upper
 41 100
 69 0.2 80.8 121.2#
 39 59.0 54.4 81.6



#49
 1,4-Dioxane
 Concen: 4.125 ug/l
 RT: 9.741 min Scan# 1307
 Delta R.T. 0.041 min
 Lab File: VN076417.D
 Acq: 26 Jan 2023 14:01

Tgt Ion: 88 Resp: 334
 Ion Ratio Lower Upper
 88 100
 43 552612.0 18.1 27.1#
 58 2659.3 46.5 69.7#

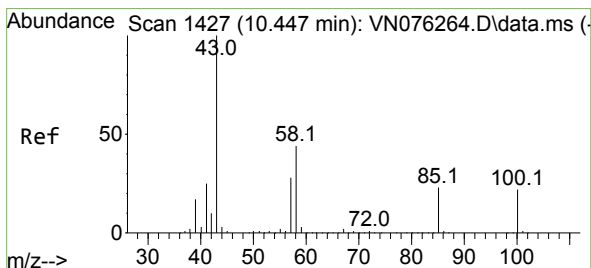
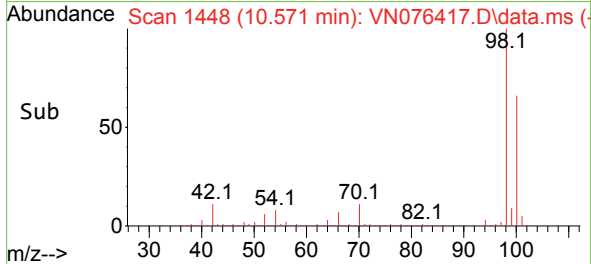
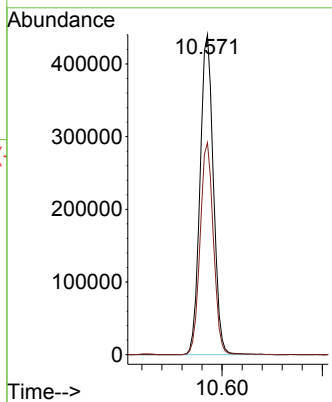
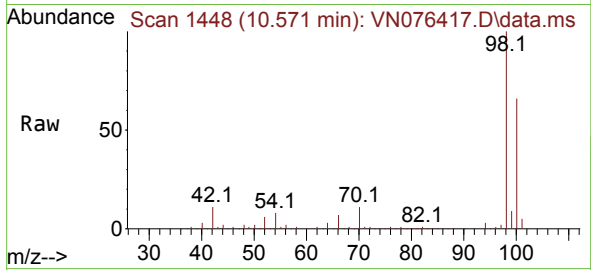




#50
 Toluene-d8
 Concen: 50.370 ug/l
 RT: 10.571 min Scan# 1448
 Delta R.T. -0.000 min
 Lab File: VN076417.D
 Acq: 26 Jan 2023 14:01

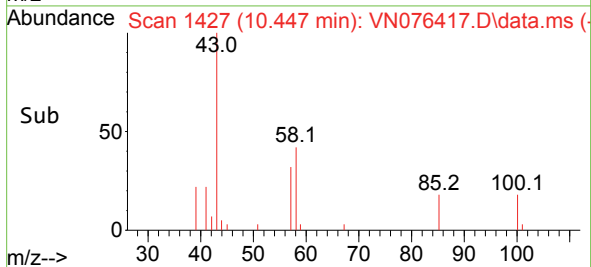
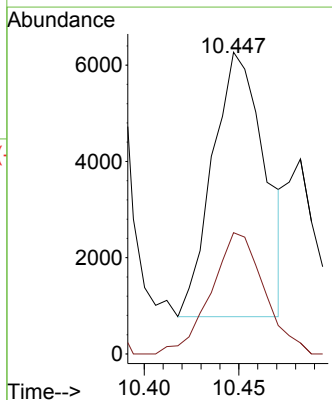
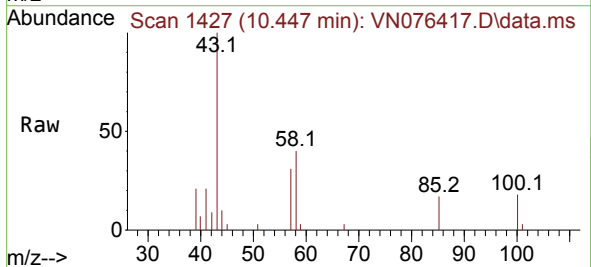
Instrument : MSVOA_N
 ClientSampleId : PB150465ZHE#02

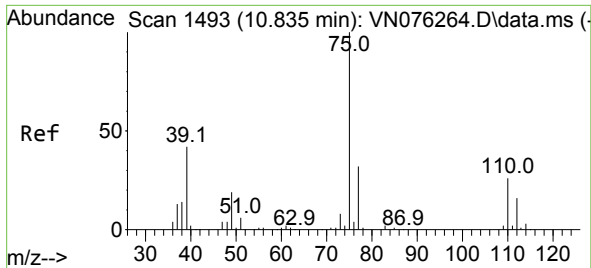
Tgt Ion: 98 Resp: 813131
 Ion Ratio Lower Upper
 98 100
 100 66.1 52.2 78.4



#51
 4-Methyl-2-Pentanone
 Concen: 2.209 ug/l
 RT: 10.447 min Scan# 1427
 Delta R.T. 0.000 min
 Lab File: VN076417.D
 Acq: 26 Jan 2023 14:01

Tgt Ion: 43 Resp: 10512
 Ion Ratio Lower Upper
 43 100
 58 46.8 35.1 52.7

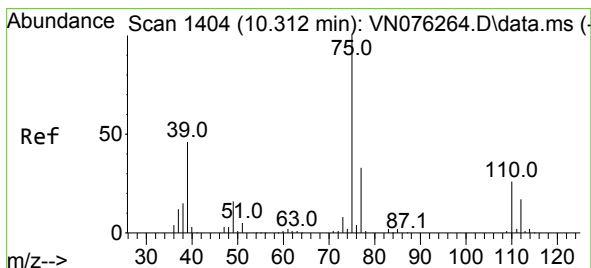
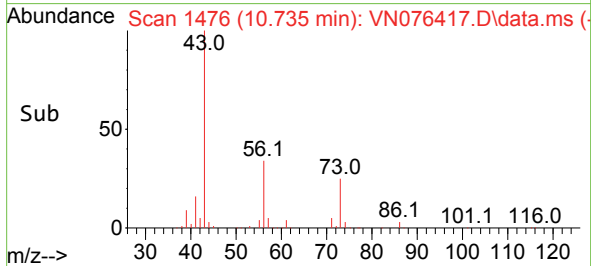
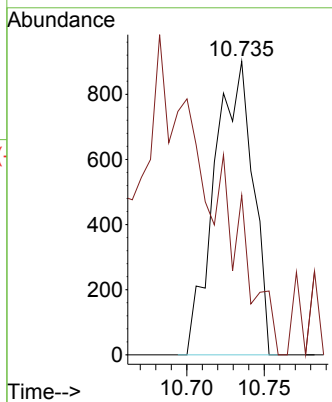
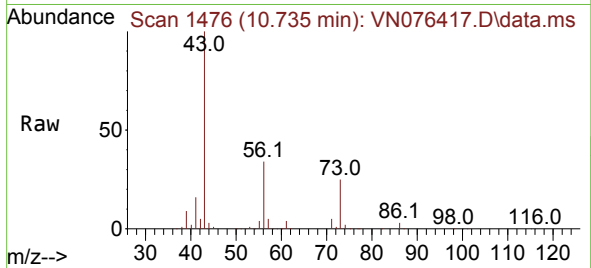




#53
 t-1,3-Dichloropropene
 Concen: 0.250 ug/l
 RT: 10.735 min Scan# 1412
 Delta R.T. -0.100 min
 Lab File: VN076417.D
 Acq: 26 Jan 2023 14:01

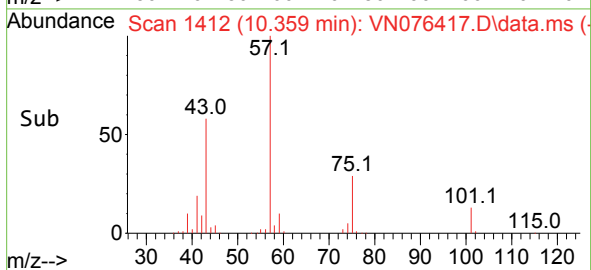
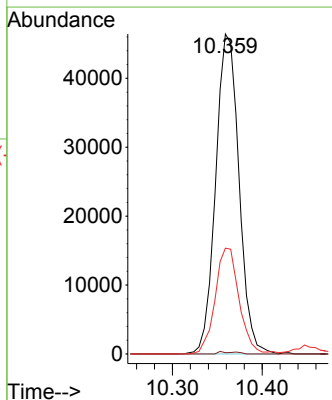
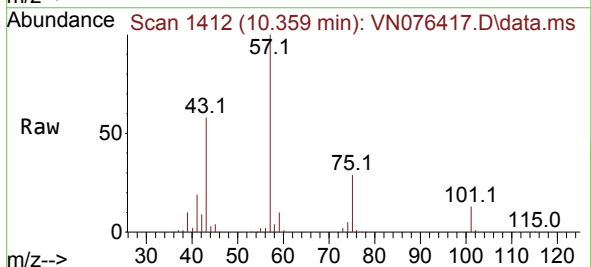
Instrument : MSVOA_N
 ClientSampleId : PB150465ZHE#02

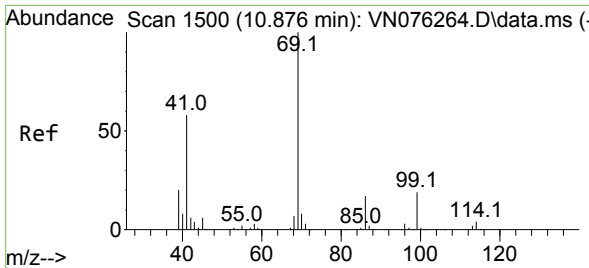
Tgt Ion: 75 Resp: 1554
 Ion Ratio Lower Upper
 75 100
 77 54.4 25.8 38.6#



#54
 cis-1,3-Dichloropropene
 Concen: 11.730 ug/l
 RT: 10.359 min Scan# 1412
 Delta R.T. 0.047 min
 Lab File: VN076417.D
 Acq: 26 Jan 2023 14:01

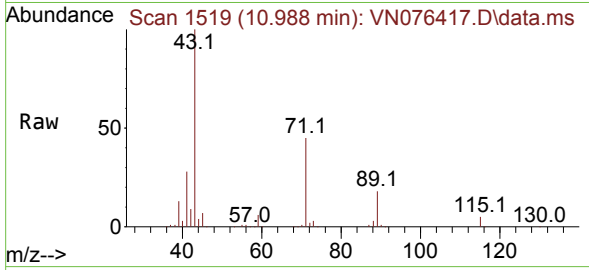
Tgt Ion: 75 Resp: 83766
 Ion Ratio Lower Upper
 75 100
 77 0.4 26.5 39.7#
 39 33.1 37.1 55.7#



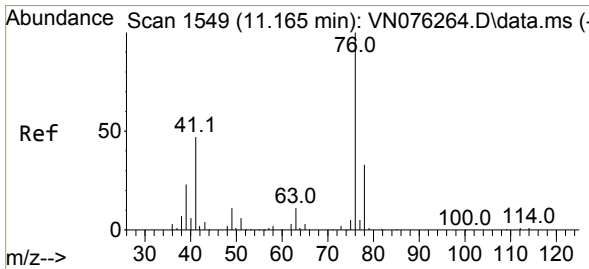
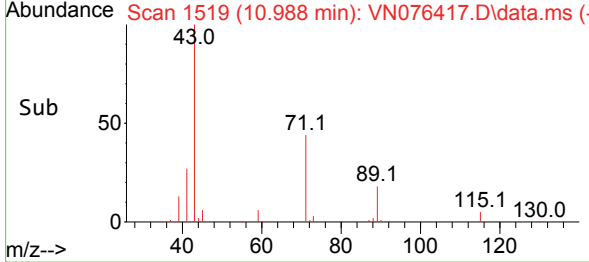
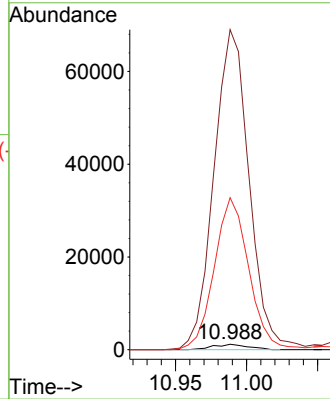


#56
 Ethyl methacrylate
 Concen: 0.328 ug/l
 RT: 10.988 min Scan# 11
 Delta R.T. 0.112 min
 Lab File: VN076417.D
 Acq: 26 Jan 2023 14:01

Instrument :
 MSVOA_N
 ClientSampleId :
 PB150465ZHE#02

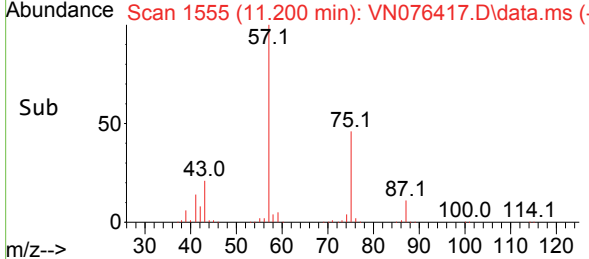
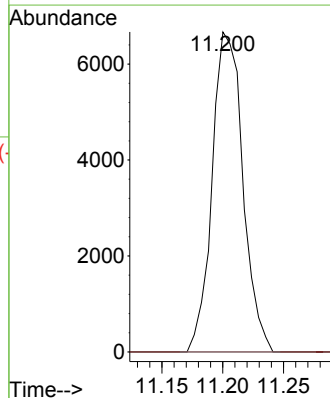
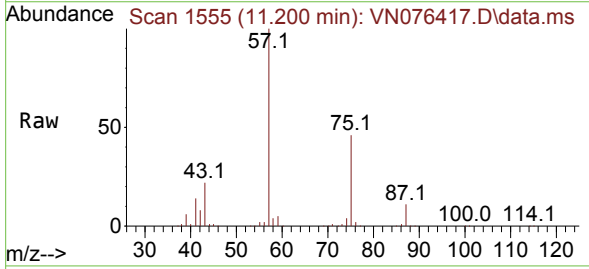


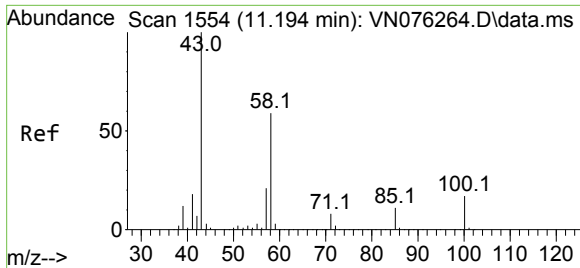
Tgt Ion: 69 Resp: 2010
 Ion Ratio Lower Upper
 69 100
 41 5922.9 45.3 67.9#
 39 2753.0 29.3 43.9#



#57
 1,3-Dichloropropane
 Concen: 1.517 ug/l
 RT: 11.200 min Scan# 1555
 Delta R.T. 0.035 min
 Lab File: VN076417.D
 Acq: 26 Jan 2023 14:01

Tgt Ion: 76 Resp: 11701
 Ion Ratio Lower Upper
 76 100
 78 0.0 26.4 39.6#

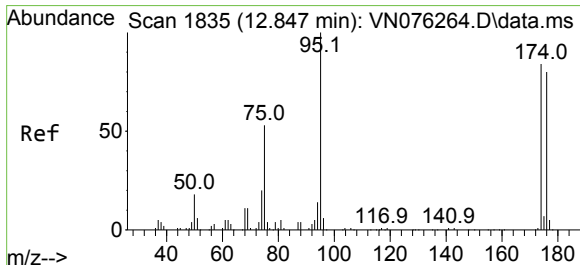
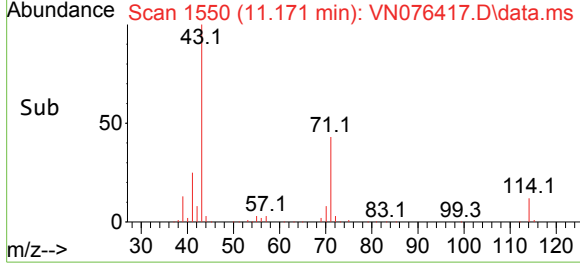
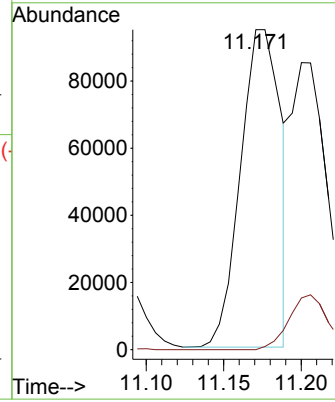
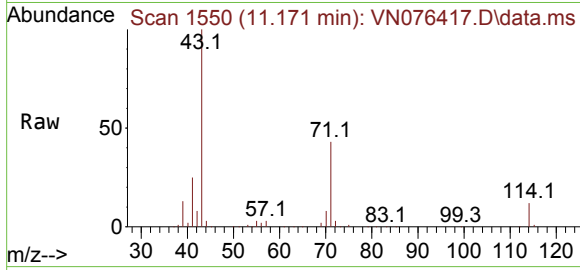




#59
 2-Hexanone
 Concen: 49.239 ug/l
 RT: 11.171 min Scan# 111
 Delta R.T. -0.023 min
 Lab File: VN076417.D
 Acq: 26 Jan 2023 14:01

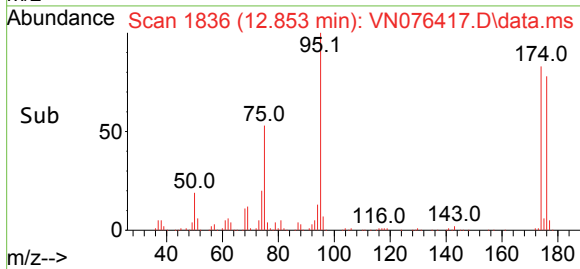
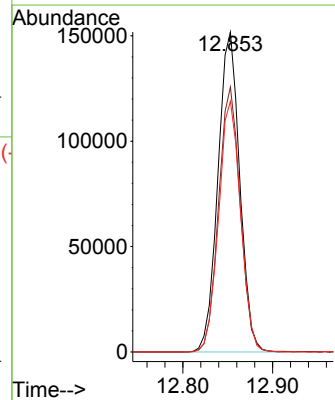
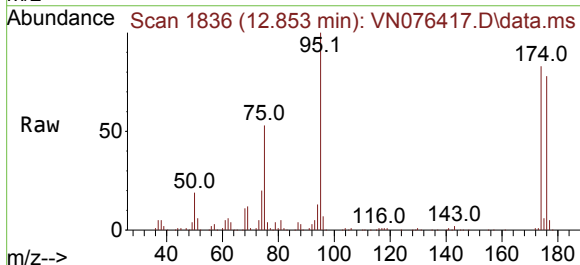
Instrument : MSVOA_N
 ClientSampleId : PB150465ZHE#02

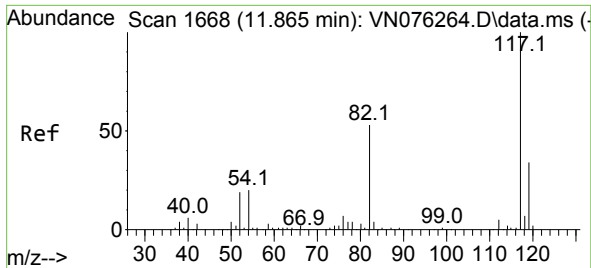
Tgt Ion: 43 Resp: 169766
 Ion Ratio Lower Upper
 43 100
 58 0.0 30.1 90.3#



#62
 4-Bromofluorobenzene
 Concen: 48.503 ug/l
 RT: 12.853 min Scan# 1836
 Delta R.T. 0.006 min
 Lab File: VN076417.D
 Acq: 26 Jan 2023 14:01

Tgt Ion: 95 Resp: 255613
 Ion Ratio Lower Upper
 95 100
 174 82.5 0.0 174.6
 176 79.0 0.0 167.8

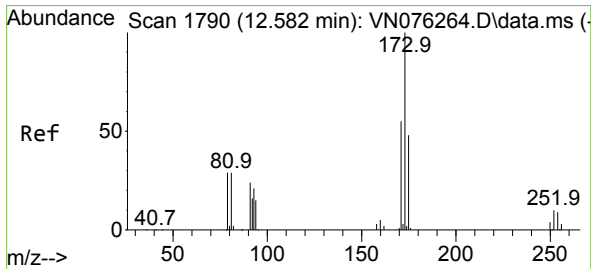
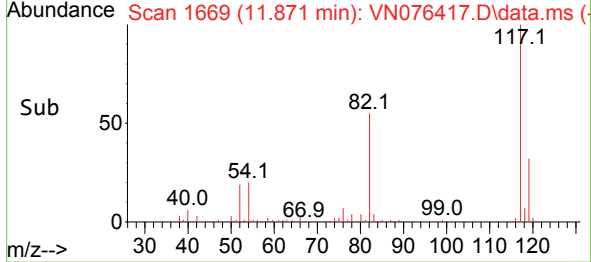
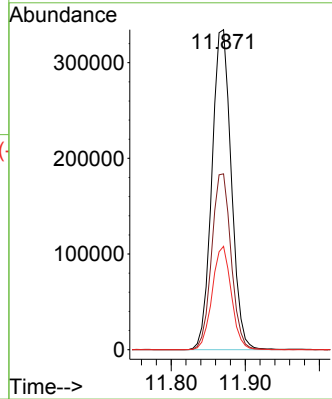
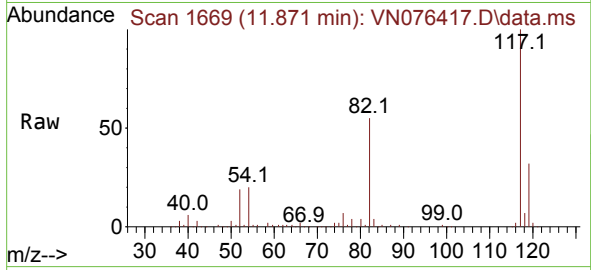




#63
 Chlorobenzene-d5
 Concen: 50.000 ug/l
 RT: 11.871 min Scan# 11
 Delta R.T. 0.006 min
 Lab File: VN076417.D
 Acq: 26 Jan 2023 14:01

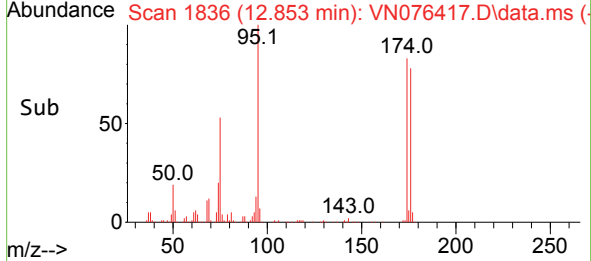
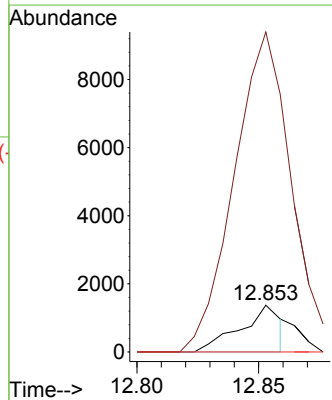
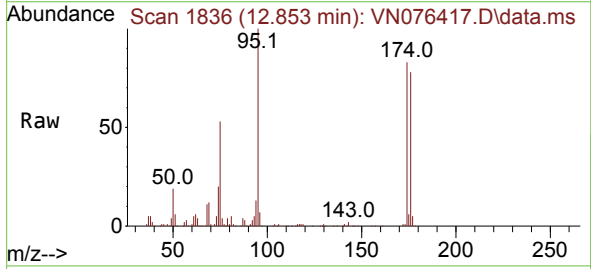
Instrument :
 MSVOA_N
 ClientSampleId :
 PB150465ZHE#02

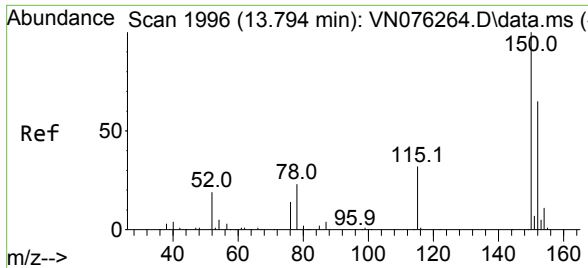
Tgt Ion:117 Resp: 608906
 Ion Ratio Lower Upper
 117 100
 82 54.9 42.2 63.2
 119 32.3 26.9 40.3



#71
 Bromoform
 Concen: 0.459 ug/l
 RT: 12.853 min Scan# 1836
 Delta R.T. 0.271 min
 Lab File: VN076417.D
 Acq: 26 Jan 2023 14:01

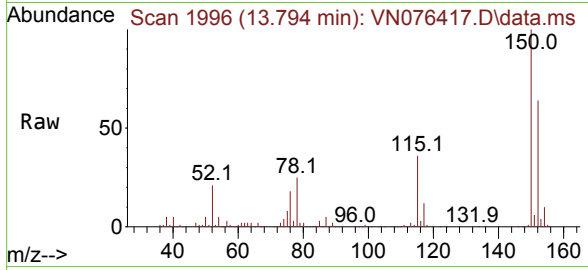
Tgt Ion:173 Resp: 1586
 Ion Ratio Lower Upper
 173 100
 175 798.0 24.1 72.4#
 254 0.0 0.0 0.0





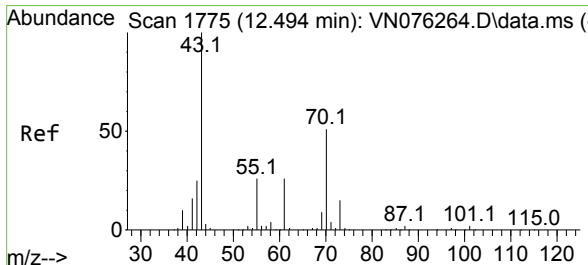
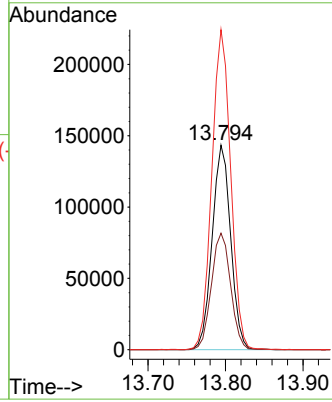
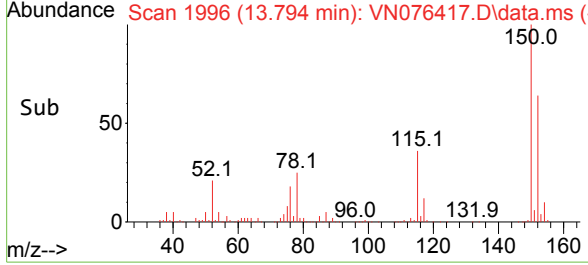
#72
 1,4-Dichlorobenzene-d4
 Concen: 50.000 ug/l
 RT: 13.794 min Scan# 1996
 Delta R.T. 0.000 min
 Lab File: VN076417.D
 Acq: 26 Jan 2023 14:01

Instrument : MSVOA_N
 ClientSampleId : PB150465ZHE#02

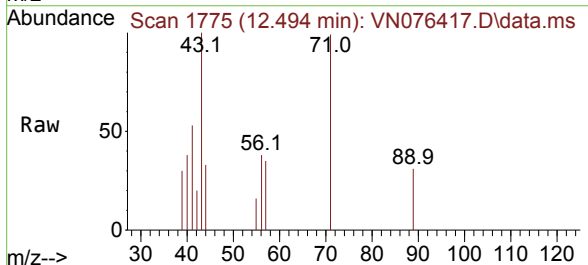


Tgt Ion:152 Resp: 238093

Ion	Ratio	Lower	Upper
152	100		
115	59.1	29.6	88.9
150	159.1	0.0	351.4

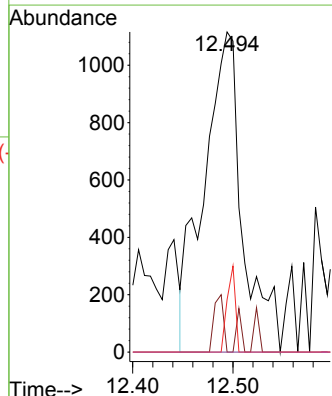
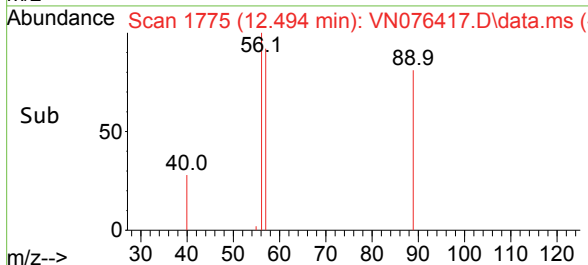


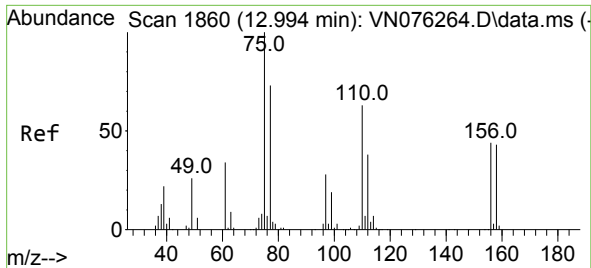
#74
 N-amy1 acetate
 Concen: 0.566 ug/l
 RT: 12.494 min Scan# 1775
 Delta R.T. 0.000 min
 Lab File: VN076417.D
 Acq: 26 Jan 2023 14:01



Tgt Ion: 43 Resp: 3000

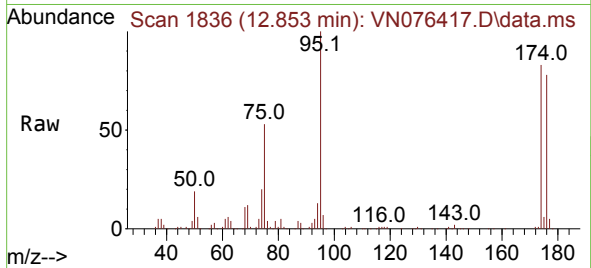
Ion	Ratio	Lower	Upper
43	100		
70	1.8	41.2	61.8#
55	5.7	21.0	31.6#
61	0.0	21.6	32.4#



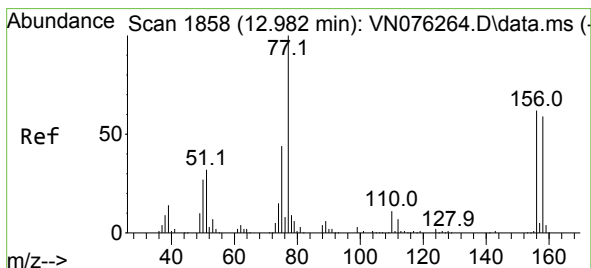
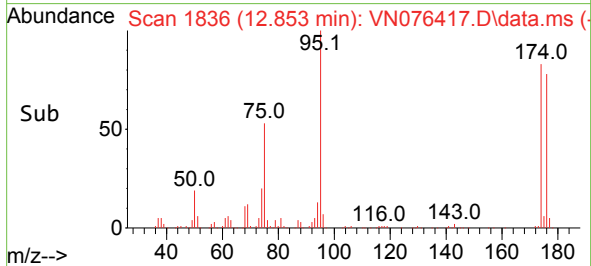
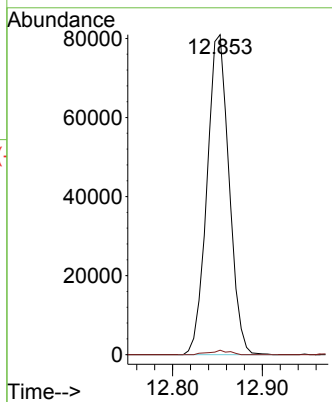


#76
 1,2,3-Trichloropropane
 Concen: 31.434 ug/l
 RT: 12.853 min Scan# 1836
 Delta R.T. -0.141 min
 Lab File: VN076417.D
 Acq: 26 Jan 2023 14:01

Instrument : MSVOA_N
 ClientSampleId : PB150465ZHE#02

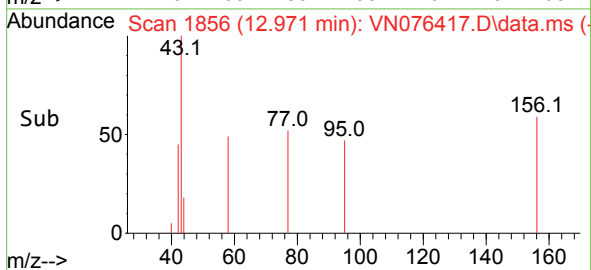
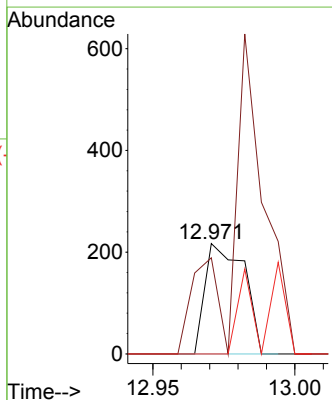
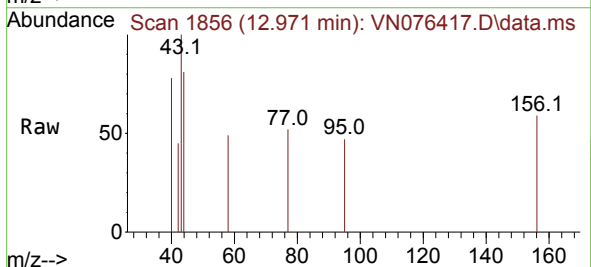


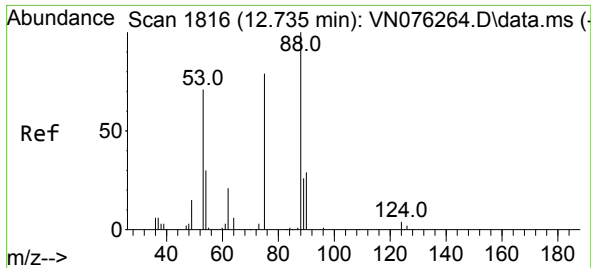
Tgt Ion: 75 Resp: 137871
 Ion Ratio Lower Upper
 75 100
 77 1.2 75.2 225.6#



#77
 Bromobenzene
 Concen: Below Cal
 RT: 12.971 min Scan# 1856
 Delta R.T. -0.011 min
 Lab File: VN076417.D
 Acq: 26 Jan 2023 14:01

Tgt Ion: 156 Resp: 207
 Ion Ratio Lower Upper
 156 100
 77 0.0 93.4 280.2#
 158 0.0 48.4 145.2#

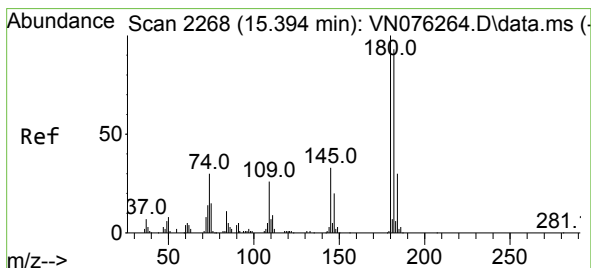
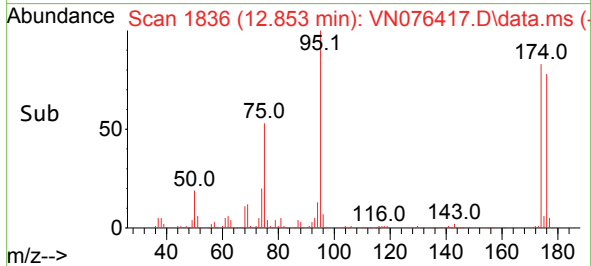
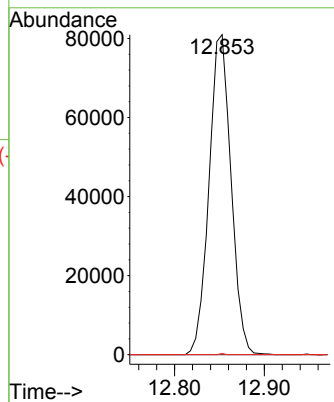
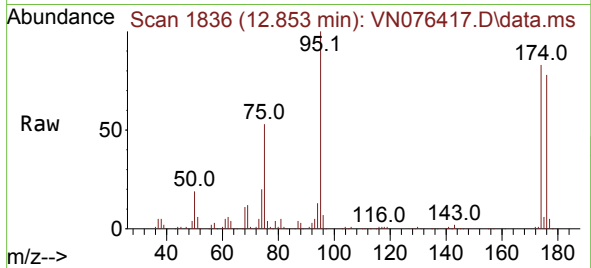




#81
 trans-1,4-Dichloro-2-butene
 Concen: 96.346 ug/l
 RT: 12.853 min Scan# 1816
 Delta R.T. 0.118 min
 Lab File: VN076417.D
 Acq: 26 Jan 2023 14:01

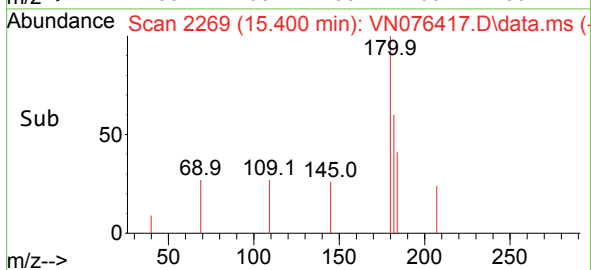
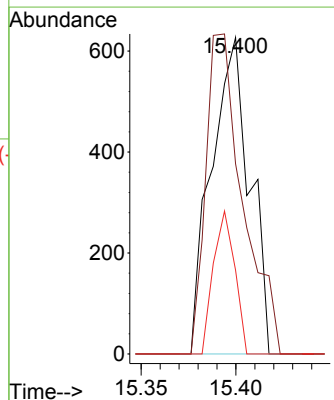
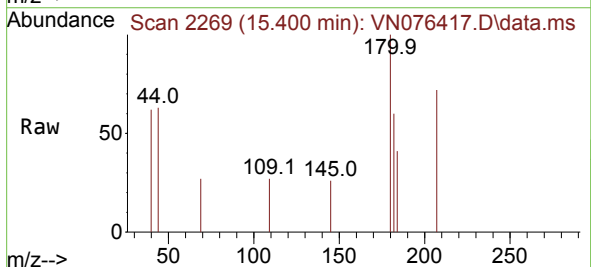
Instrument :
 MSVOA_N
 ClientSampleId :
 PB150465ZHE#02

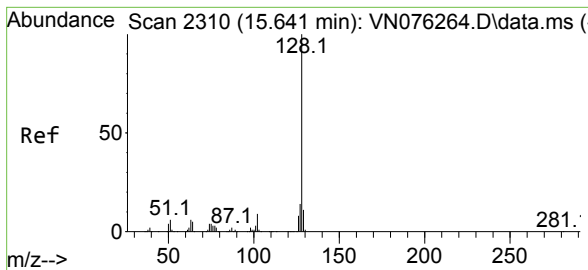
Tgt Ion: 75 Resp: 137871
 Ion Ratio Lower Upper
 75 100
 53 0.0 75.8 113.8#
 89 0.1 37.0 55.6#



#93
 1,2,4-Trichlorobenzene
 Concen: 1.511 ug/l
 RT: 15.400 min Scan# 2269
 Delta R.T. 0.006 min
 Lab File: VN076417.D
 Acq: 26 Jan 2023 14:01

Tgt Ion:180 Resp: 882
 Ion Ratio Lower Upper
 180 100
 182 97.4 47.0 141.2
 145 25.2 15.2 45.5

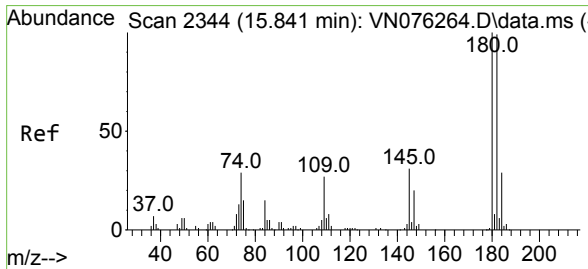
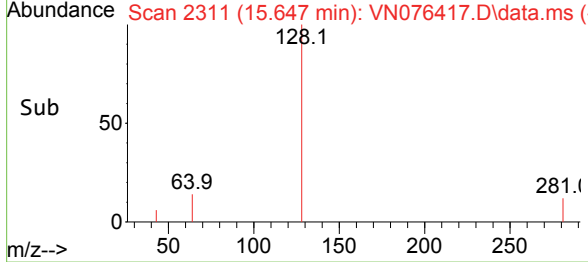
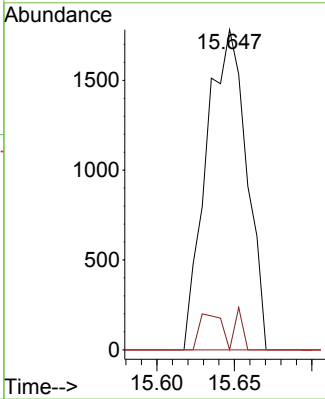
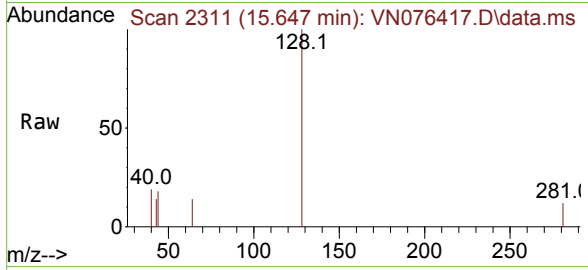




#95
 Naphthalene
 Concen: 2.090 ug/l
 RT: 15.647 min Scan# 2111
 Delta R.T. 0.006 min
 Lab File: VN076417.D
 Acq: 26 Jan 2023 14:01

Instrument : MSVOA_N
 ClientSampleId : PB150465ZHE#02

Tgt Ion	Resp	Ion Ratio	Lower	Upper
128	3220	100		
127	6.2	10.3	15.5#	
129	0.0	8.6	13.0#	



#96
 1,2,3-Trichlorobenzene
 Concen: 1.345 ug/l
 RT: 15.841 min Scan# 2344
 Delta R.T. -0.000 min
 Lab File: VN076417.D
 Acq: 26 Jan 2023 14:01

Tgt Ion	Resp	Ion Ratio	Lower	Upper
180	780	100		
182	84.7	47.5	142.5	
145	9.9	15.9	47.6#	

