

Data Path : Z:\voasrv\HPCHEM1\MSVOA_N\Data\VN012623\
 Data File : VN076420.D
 Acq On : 26 Jan 2023 15:13
 Operator : JC\MD
 Sample : PB150465ZHE#05
 Misc : 5.0mL/MSVOA_N/WATER
 ALS Vial : 12 Sample Multiplier: 1

Instrument :
 MSVOA_N
 ClientSampleId :
 PB150465ZHE#05

Quant Time: Jan 27 00:36:44 2023
 Quant Method : Z:\voasrv\HPCHEM1\MSVOA_N\methods\82N011623W.M
 Quant Title : SW846 8260
 QLast Update : Tue Jan 17 03:59:22 2023
 Response via : Initial Calibration

Compound	R.T.	QIon	Response	Conc	Units	Dev(Min)

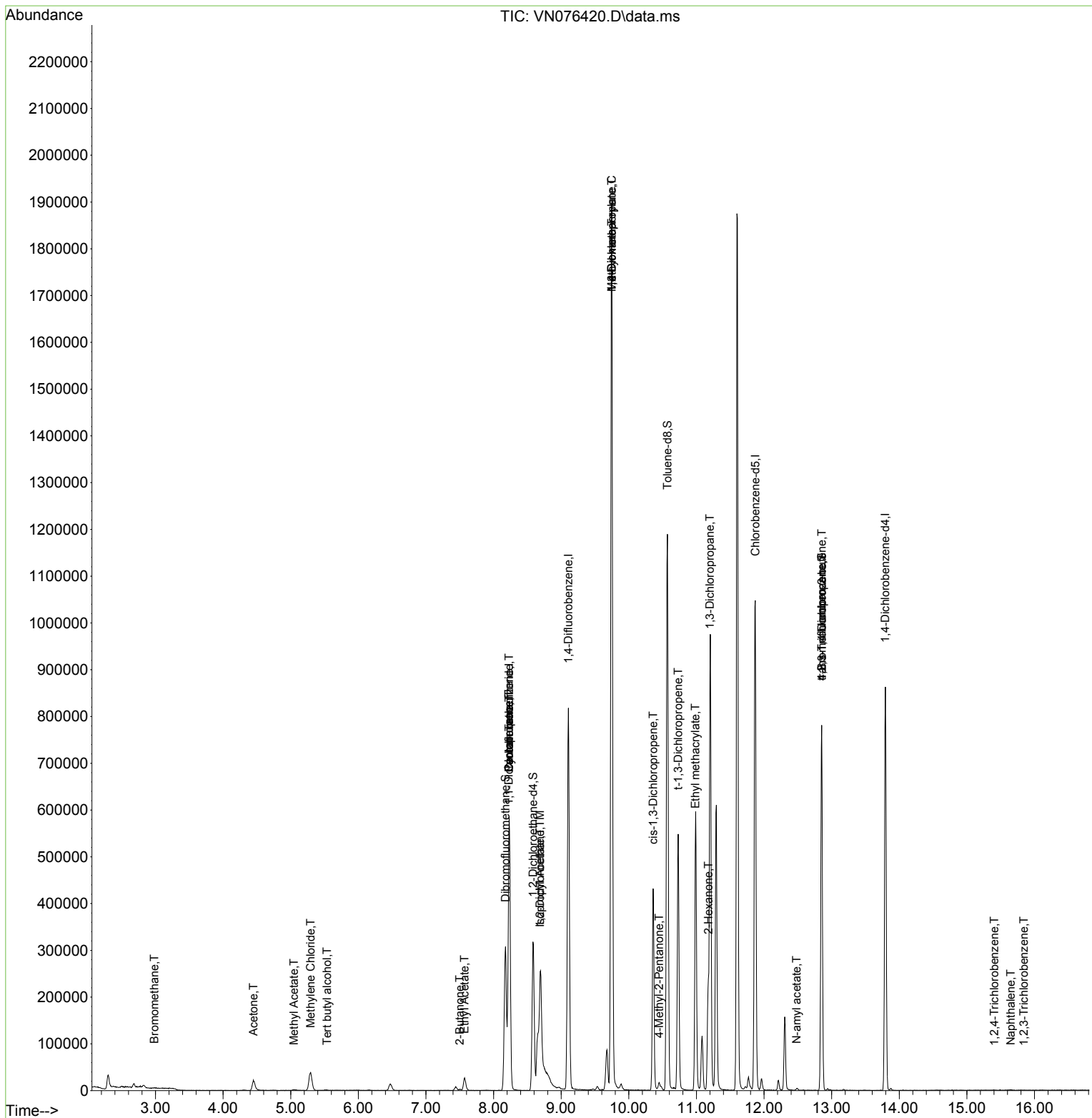
Internal Standards						
1) Pentafluorobenzene	8.230	168	432998	50.000	ug/l	0.00
34) 1,4-Difluorobenzene	9.106	114	727036	50.000	ug/l	0.00
63) Chlorobenzene-d5	11.871	117	627064	50.000	ug/l	0.00
72) 1,4-Dichlorobenzene-d4	13.794	152	237007	50.000	ug/l	0.00
System Monitoring Compounds						
33) 1,2-Dichloroethane-d4	8.582	65	263890	54.430	ug/l	0.00
Spiked Amount	50.000	Range 74 - 125	Recovery	=	108.860%	
35) Dibromofluoromethane	8.177	113	219318	48.224	ug/l	0.00
Spiked Amount	50.000	Range 75 - 124	Recovery	=	96.440%	
50) Toluene-d8	10.571	98	839890	50.005	ug/l	0.00
Spiked Amount	50.000	Range 86 - 113	Recovery	=	100.020%	
62) 4-Bromofluorobenzene	12.853	95	259398	47.309	ug/l	0.00
Spiked Amount	50.000	Range 83 - 123	Recovery	=	94.620%	
Target Compounds						
						Qvalue
5) Bromomethane	2.983	94	1026	0.222	ug/l #	79
11) Tert butyl alcohol	5.536	59	1185	1.827	ug/l #	72
16) Acetone	4.447	43	41559	26.674	ug/l	93
18) Methyl Acetate	5.047	43	4096	0.778	ug/l #	73
20) Methylene Chloride	5.294	84	32873	6.625	ug/l	97
25) 2-Butanone	7.500	43	2746	1.157	ug/l #	82
31) Cyclohexane	8.230	56	9412	1.264	ug/l #	34
36) 1,1-Dichloropropene	8.224	75	34181	5.289	ug/l #	49
37) Ethyl Acetate	7.571	43	39805	7.710	ug/l	99
38) Carbon Tetrachloride	8.230	117	43677	6.061	ug/l #	18
42) 1,2-Dichloroethane	8.688	62	2095	0.317	ug/l #	73
43) Isopropyl Acetate	8.688	43	467772	55.472	ug/l #	68
45) 1,2-Dichloropropane	9.747	63	2371	0.512	ug/l #	42
48) Methyl methacrylate	9.747	41	174164	43.627	ug/l #	35
49) 1,4-Dioxane	9.747	88	412	4.891	ug/l #	1
51) 4-Methyl-2-Pentanone	10.447	43	14564	2.942	ug/l #	74
53) t-1,3-Dichloropropene	10.729	75	1591	0.246	ug/l #	77
54) cis-1,3-Dichloropropene	10.359	75	81801	11.009	ug/l #	63
56) Ethyl methacrylate	10.982	69	1856	0.291	ug/l #	1
57) 1,3-Dichloropropane	11.200	76	11088	1.381	ug/l #	42
59) 2-Hexanone	11.176	43	161968	45.152	ug/l #	21
74) N-amyl acetate	12.482	43	1889	0.358	ug/l #	42
76) 1,2,3-Trichloropropane	12.853	75	140502	32.204	ug/l #	1
81) trans-1,4-Dichloro-2-b...	12.853	75	140502	98.635	ug/l #	11
93) 1,2,4-Trichlorobenzene	15.406	180	352	1.388	ug/l #	79
95) Naphthalene	15.647	128	1419	1.950	ug/l #	69
96) 1,2,3-Trichlorobenzene	15.841	180	207	1.205	ug/l #	25

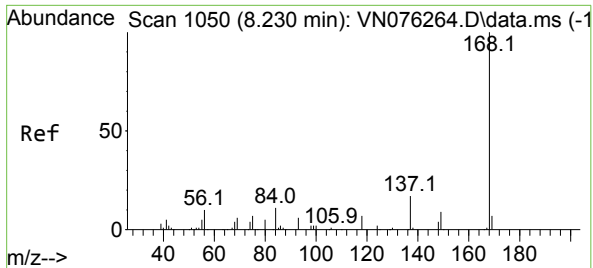
(#) = qualifier out of range (m) = manual integration (+) = signals summed

Data Path : Z:\voasrv\HPCHEM1\MSVOA_N\Data\VN012623\
 Data File : VN076420.D
 Acq On : 26 Jan 2023 15:13
 Operator : JC\MD
 Sample : PB150465ZHE#05
 Misc : 5.0mL/MSVOA_N/WATER
 ALS Vial : 12 Sample Multiplier: 1

Instrument :
 MSVOA_N
 ClientSampleId :
 PB150465ZHE#05

Quant Time: Jan 27 00:36:44 2023
 Quant Method : Z:\voasrv\HPCHEM1\MSVOA_N\methods\82N011623W.M
 Quant Title : SW846 8260
 QLast Update : Tue Jan 17 03:59:22 2023
 Response via : Initial Calibration

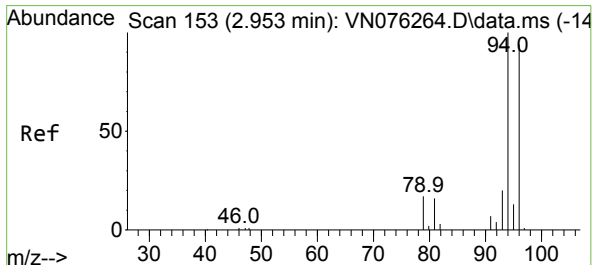
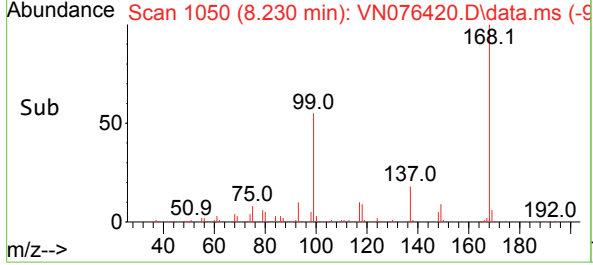
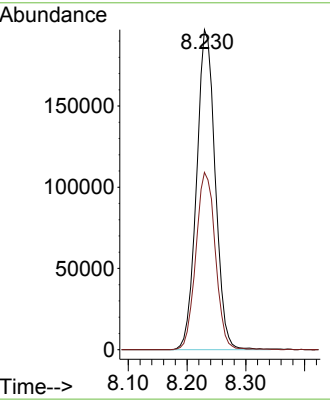
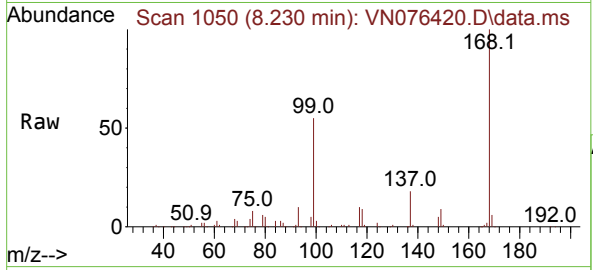




#1
 Pentafluorobenzene
 Concen: 50.000 ug/l
 RT: 8.230 min Scan# 10
 Delta R.T. -0.000 min
 Lab File: VN076420.D
 Acq: 26 Jan 2023 15:13

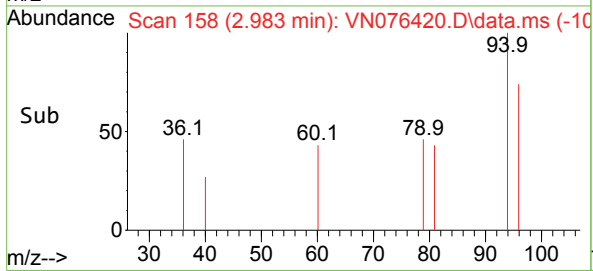
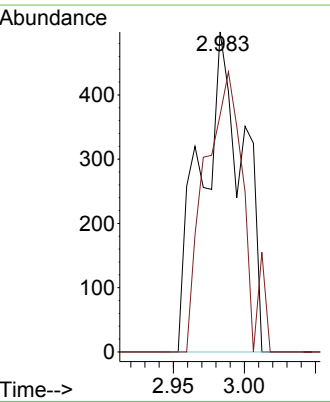
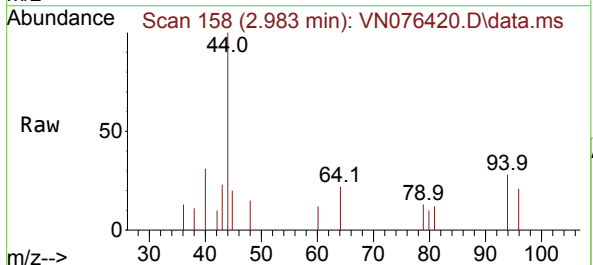
Instrument : MSVOA_N
 ClientSampleId : PB150465ZHE#05

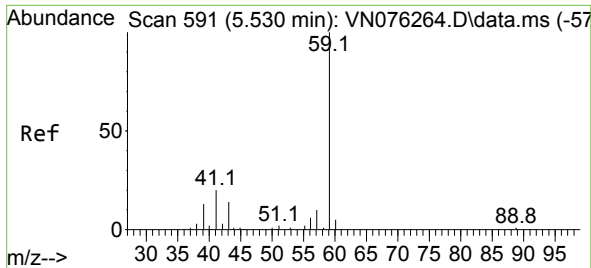
Tgt Ion:168 Resp: 432998
 Ion Ratio Lower Upper
 168 100
 99 55.4 41.6 62.4



#5
 Bromomethane
 Concen: 0.222 ug/l
 RT: 2.983 min Scan# 158
 Delta R.T. 0.030 min
 Lab File: VN076420.D
 Acq: 26 Jan 2023 15:13

Tgt Ion: 94 Resp: 1026
 Ion Ratio Lower Upper
 94 100
 96 74.1 75.1 112.7#

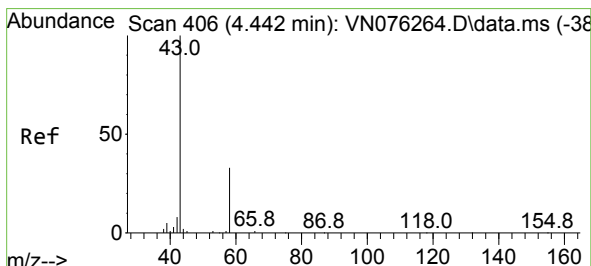
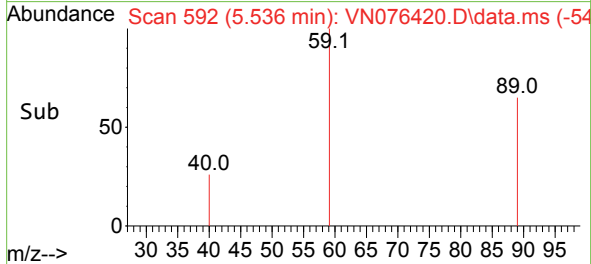
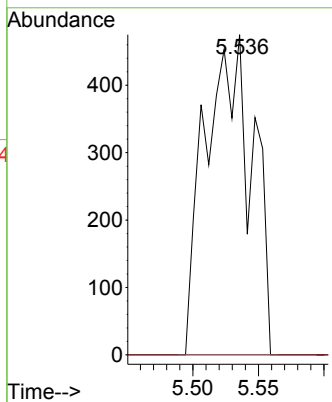
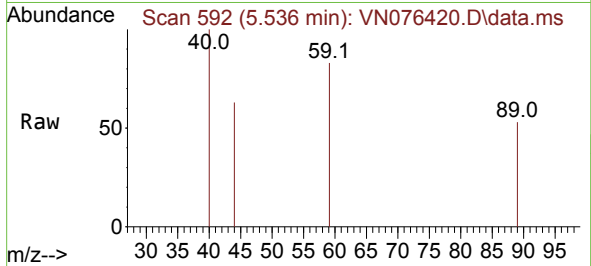




#11
 Tert butyl alcohol
 Concen: 1.827 ug/l
 RT: 5.536 min Scan# 51
 Delta R.T. 0.006 min
 Lab File: VN076420.D
 Acq: 26 Jan 2023 15:13

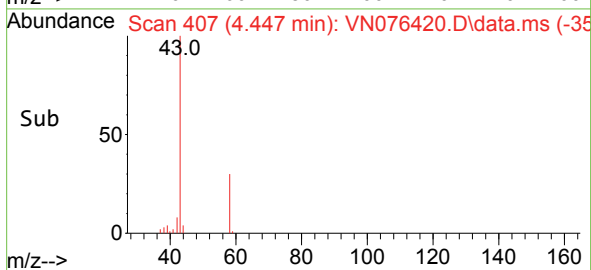
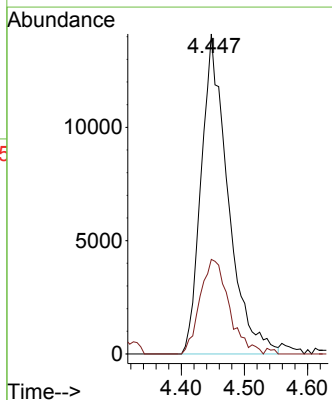
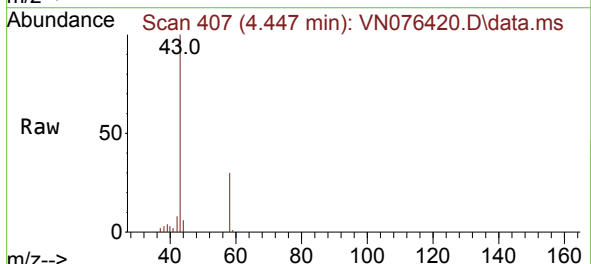
Instrument : MSVOA_N
 ClientSampleId : PB150465ZHE#05

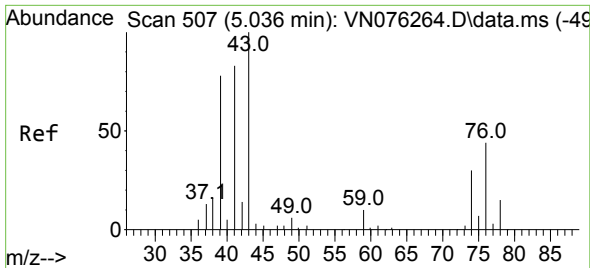
Tgt Ion: 59 Resp: 1185
 Ion Ratio Lower Upper
 59 100
 57 0.0 8.5 12.7#



#16
 Acetone
 Concen: 26.674 ug/l
 RT: 4.447 min Scan# 407
 Delta R.T. 0.005 min
 Lab File: VN076420.D
 Acq: 26 Jan 2023 15:13

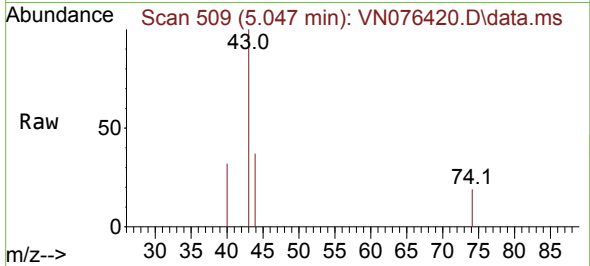
Tgt Ion: 43 Resp: 41559
 Ion Ratio Lower Upper
 43 100
 58 29.5 26.7 40.1



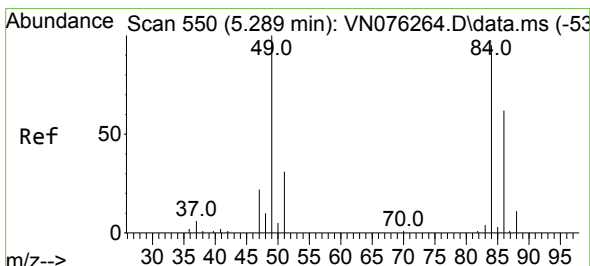
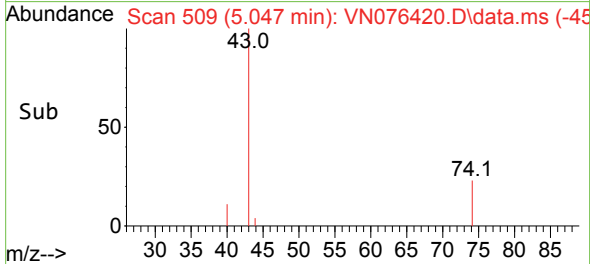
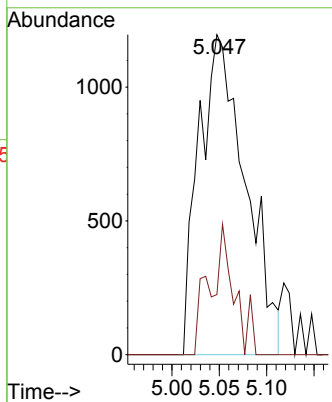


#18
 Methyl Acetate
 Concen: 0.778 ug/l
 RT: 5.047 min Scan# 509
 Delta R.T. 0.011 min
 Lab File: VN076420.D
 Acq: 26 Jan 2023 15:13

Instrument : MSVOA_N
 ClientSampleId : PB150465ZHE#05

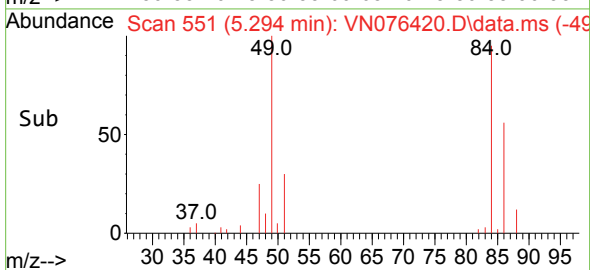
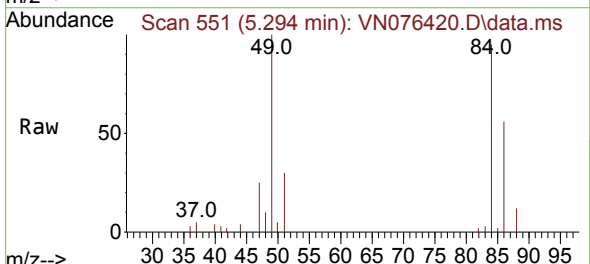
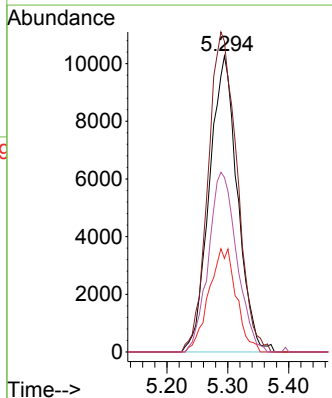


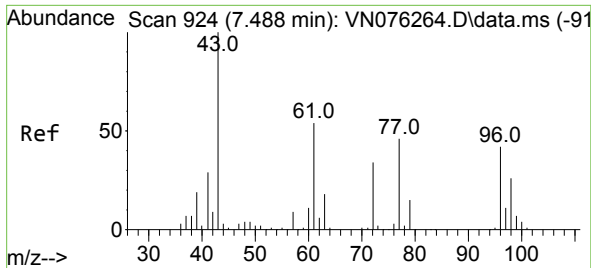
Tgt Ion: 43 Resp: 4096
 Ion Ratio Lower Upper
 43 100
 74 14.5 23.3 34.9#



#20
 Methylene Chloride
 Concen: 6.625 ug/l
 RT: 5.294 min Scan# 551
 Delta R.T. 0.005 min
 Lab File: VN076420.D
 Acq: 26 Jan 2023 15:13

Tgt Ion: 84 Resp: 32873
 Ion Ratio Lower Upper
 84 100
 49 104.9 84.5 126.7
 51 31.6 26.0 39.0
 86 59.0 52.0 78.0

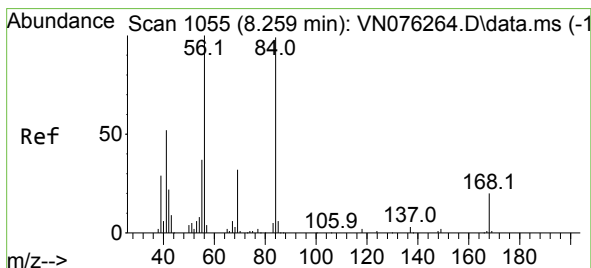
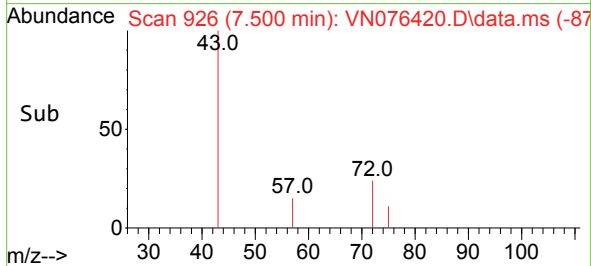
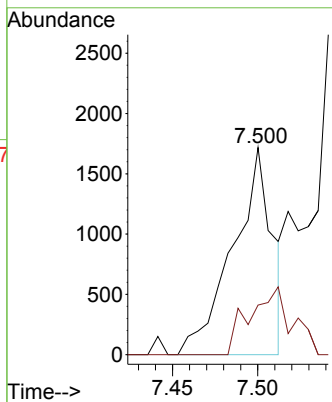
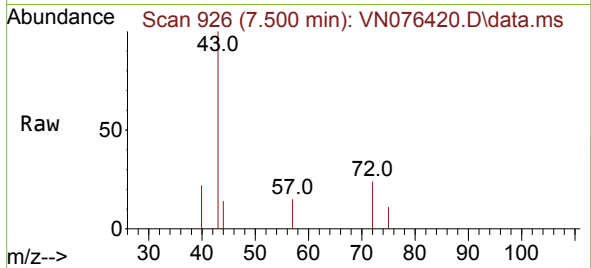




#25
 2-Butanone
 Concen: 1.157 ug/l
 RT: 7.500 min Scan# 91
 Delta R.T. 0.012 min
 Lab File: VN076420.D
 Acq: 26 Jan 2023 15:13

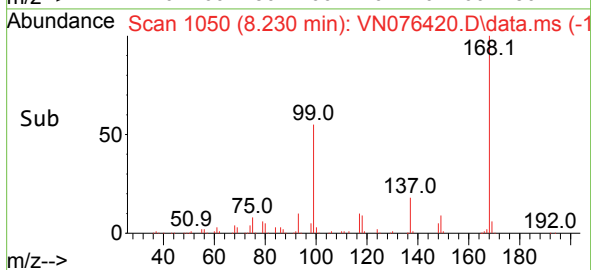
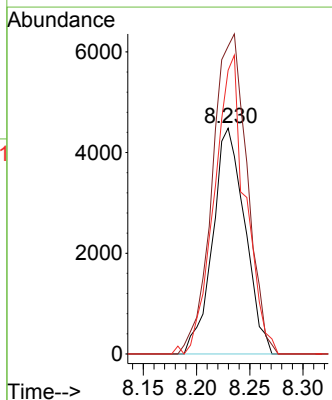
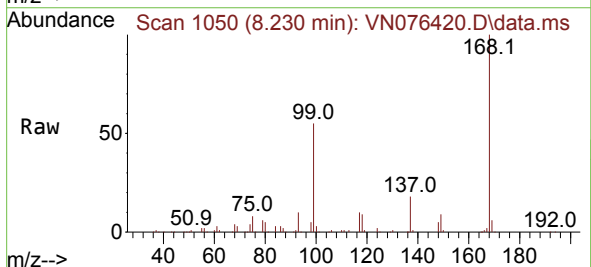
Instrument : MSVOA_N
 ClientSampleId : PB150465ZHE#05

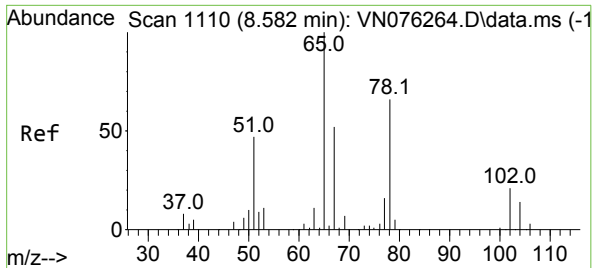
Tgt Ion: 43 Resp: 2746
 Ion Ratio Lower Upper
 43 100
 72 23.9 27.4 41.2#



#31
 Cyclohexane
 Concen: 1.264 ug/l
 RT: 8.230 min Scan# 1050
 Delta R.T. -0.029 min
 Lab File: VN076420.D
 Acq: 26 Jan 2023 15:13

Tgt Ion: 56 Resp: 9412
 Ion Ratio Lower Upper
 56 100
 69 136.3 25.8 38.8#
 84 125.7 79.0 118.4#

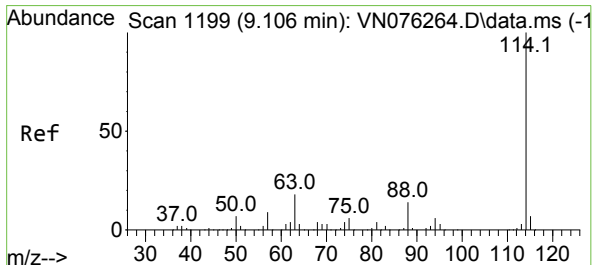
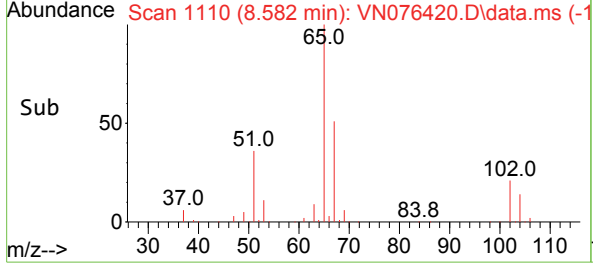
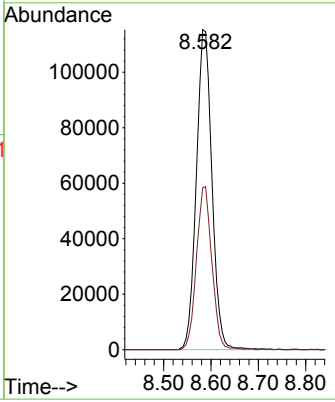
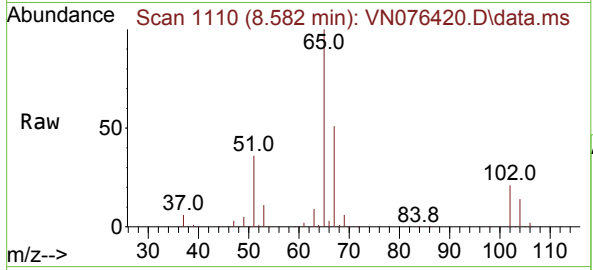




#33
 1,2-Dichloroethane-d4
 Concen: 54.430 ug/l
 RT: 8.582 min Scan# 1110
 Delta R.T. 0.000 min
 Lab File: VN076420.D
 Acq: 26 Jan 2023 15:13

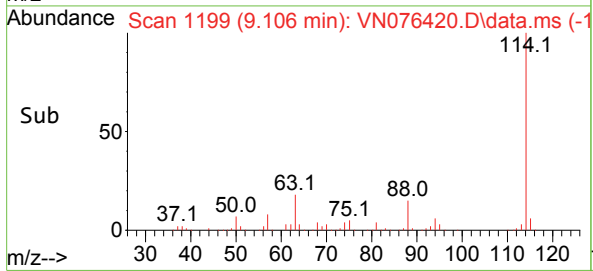
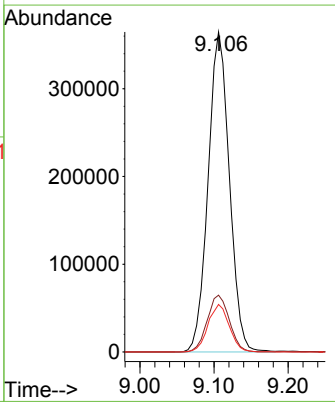
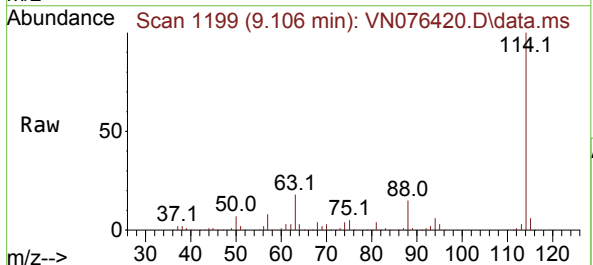
Instrument : MSVOA_N
 ClientSampleId : PB150465ZHE#05

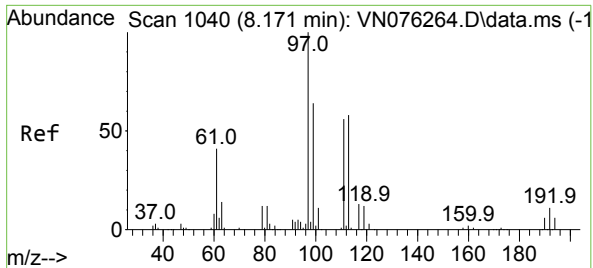
Tgt Ion: 65 Resp: 263890
 Ion Ratio Lower Upper
 65 100
 67 50.3 0.0 104.6



#34
 1,4-Difluorobenzene
 Concen: 50.000 ug/l
 RT: 9.106 min Scan# 1199
 Delta R.T. -0.000 min
 Lab File: VN076420.D
 Acq: 26 Jan 2023 15:13

Tgt Ion:114 Resp: 727036
 Ion Ratio Lower Upper
 114 100
 63 17.7 0.0 35.8
 88 14.9 0.0 28.0

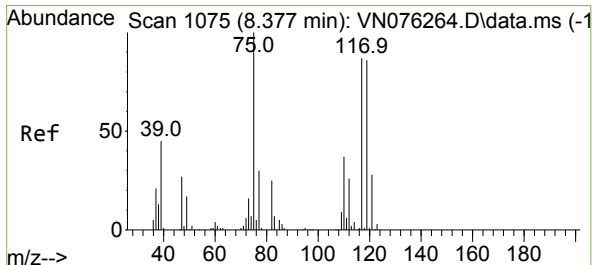
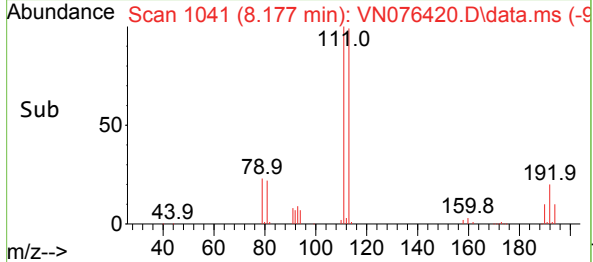
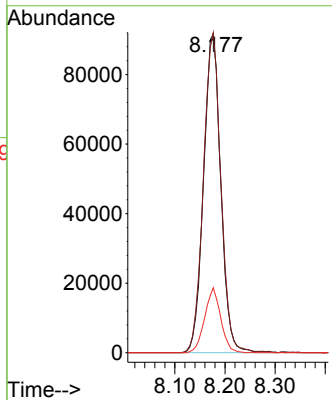
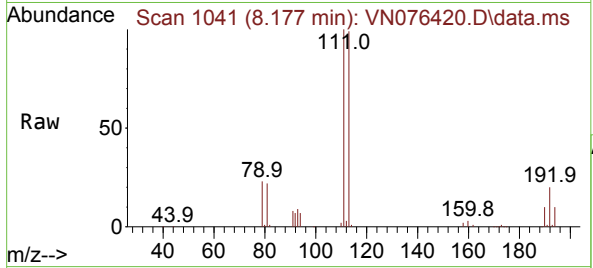




#35
 Dibromofluoromethane
 Concen: 48.224 ug/l
 RT: 8.177 min Scan# 1040
 Delta R.T. 0.006 min
 Lab File: VN076420.D
 Acq: 26 Jan 2023 15:13

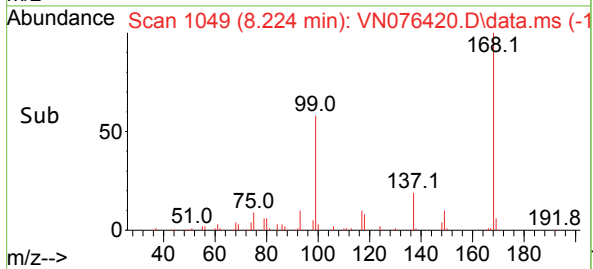
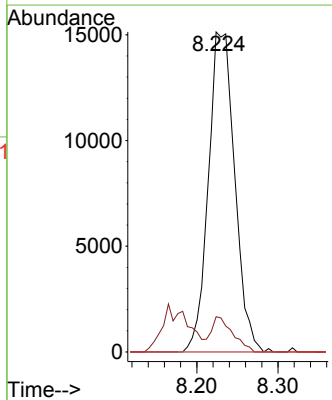
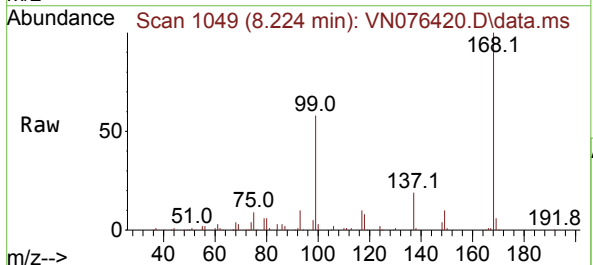
Instrument : MSVOA_N
 ClientSampleId : PB150465ZHE#05

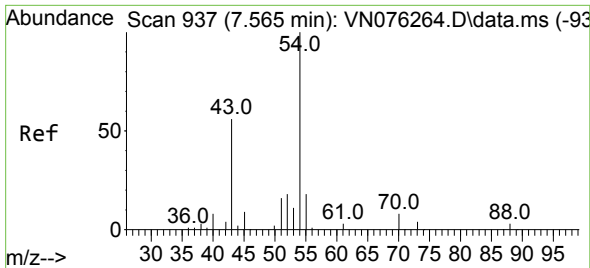
Tgt Ion	Resp	Lower	Upper
113	219318		
113	100		
111	101.4	82.7	124.1
192	18.9	15.6	23.4



#36
 1,1-Dichloropropene
 Concen: 5.289 ug/l
 RT: 8.224 min Scan# 1049
 Delta R.T. -0.153 min
 Lab File: VN076420.D
 Acq: 26 Jan 2023 15:13

Tgt Ion	Resp	Lower	Upper
75	34181		
75	100		
110	9.3	18.8	56.3#
77	0.0	25.0	37.4#

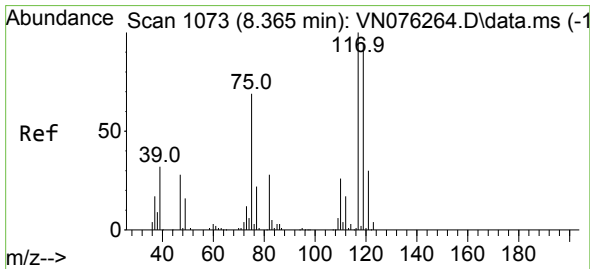
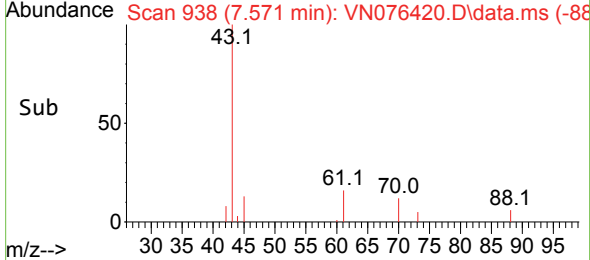
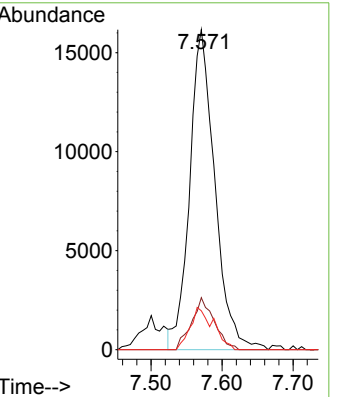
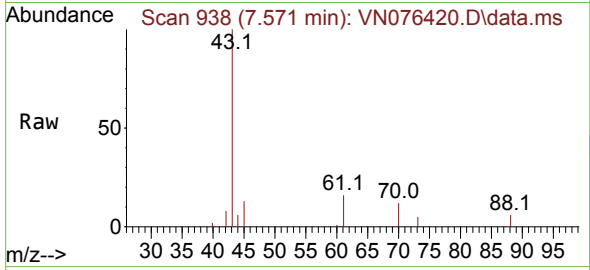




#37
 Ethyl Acetate
 Concen: 7.710 ug/l
 RT: 7.571 min Scan# 91
 Delta R.T. 0.006 min
 Lab File: VN076420.D
 Acq: 26 Jan 2023 15:13

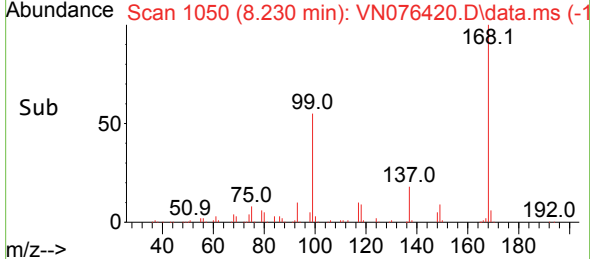
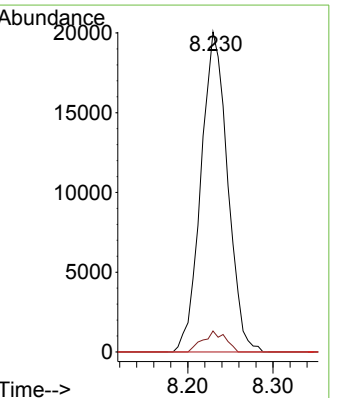
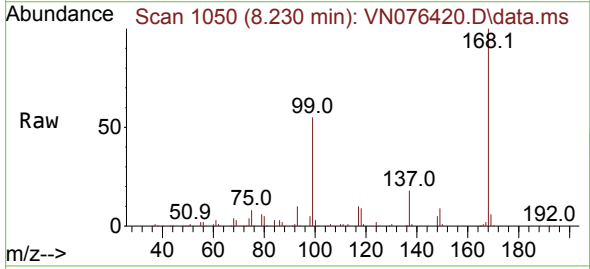
Instrument : MSVOA_N
 ClientSampleId : PB150465ZHE#05

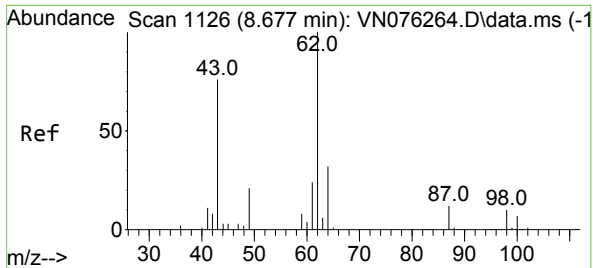
Tgt Ion	Resp	Lower	Upper
43	39805		
61	14.6	11.1	16.7
70	12.3	10.0	15.0



#38
 Carbon Tetrachloride
 Concen: 6.061 ug/l
 RT: 8.230 min Scan# 1050
 Delta R.T. -0.135 min
 Lab File: VN076420.D
 Acq: 26 Jan 2023 15:13

Tgt Ion	Resp	Lower	Upper
117	43677		
119	6.5	75.4	113.0#
121	0.0	24.2	36.2#

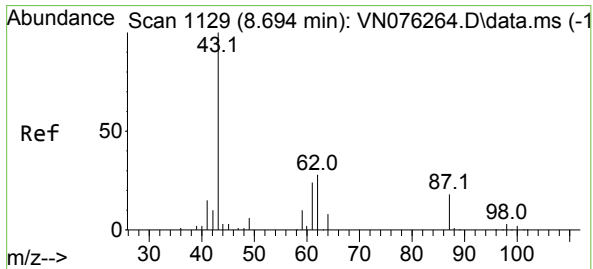
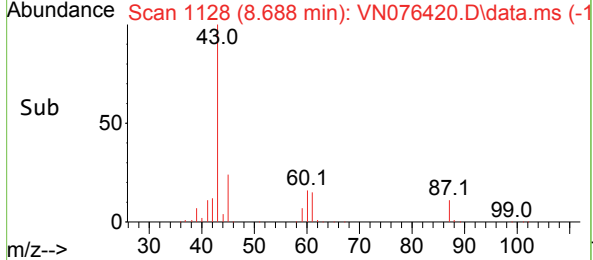
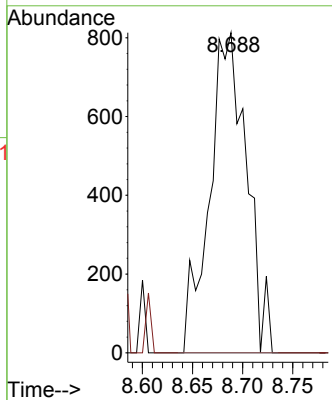
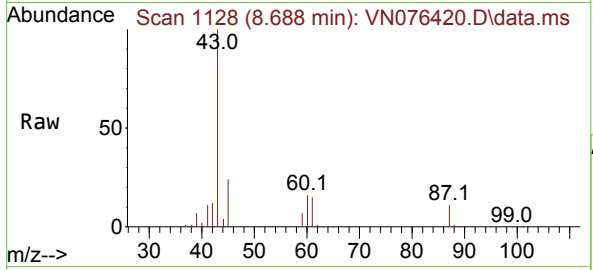




#42
 1,2-Dichloroethane
 Concen: 0.317 ug/l
 RT: 8.688 min Scan# 1128
 Delta R.T. 0.011 min
 Lab File: VN076420.D
 Acq: 26 Jan 2023 15:13

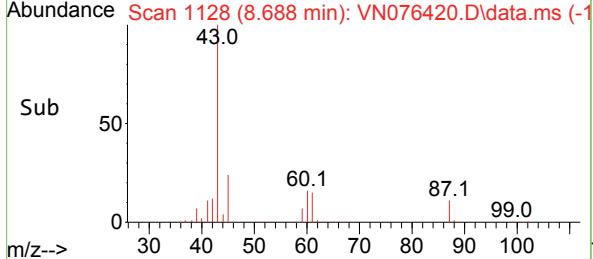
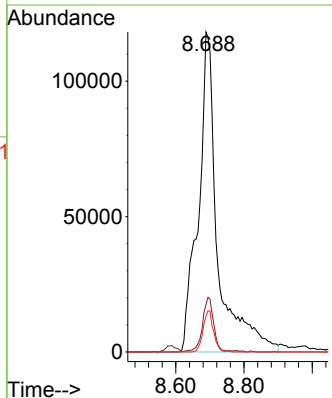
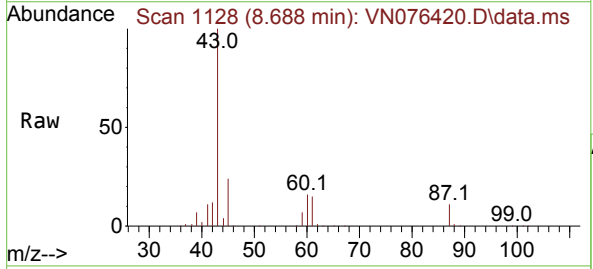
Instrument : MSVOA_N
 ClientSampleId : PB150465ZHE#05

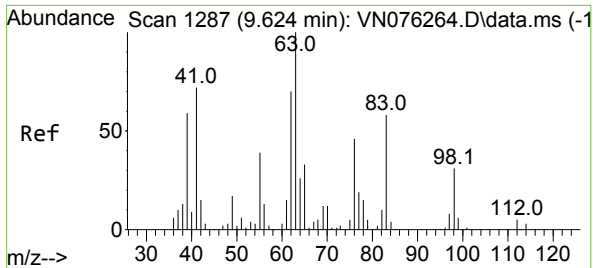
Tgt Ion: 62 Resp: 2095
 Ion Ratio Lower Upper
 62 100
 98 0.0 0.0 20.4



#43
 Isopropyl Acetate
 Concen: 55.472 ug/l
 RT: 8.688 min Scan# 1128
 Delta R.T. -0.006 min
 Lab File: VN076420.D
 Acq: 26 Jan 2023 15:13

Tgt Ion: 43 Resp: 467772
 Ion Ratio Lower Upper
 43 100
 61 9.5 23.5 35.3#
 87 6.9 13.8 20.6#

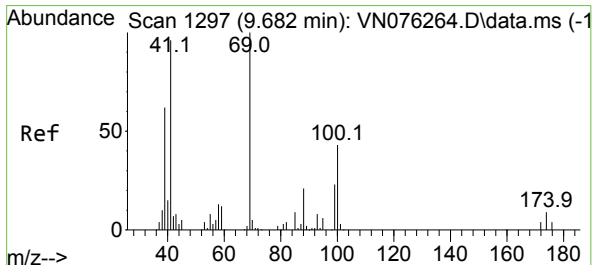
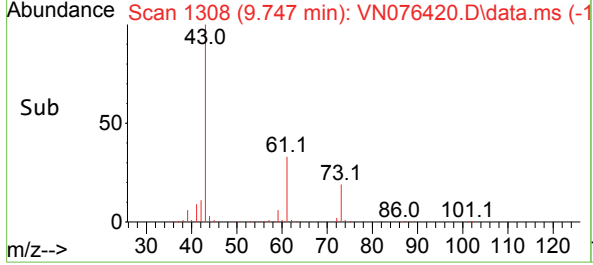
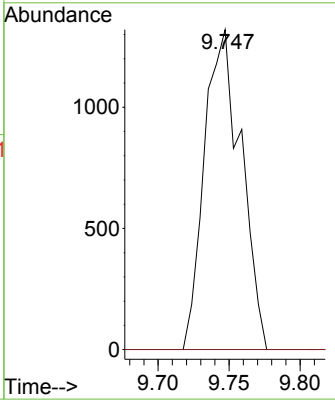
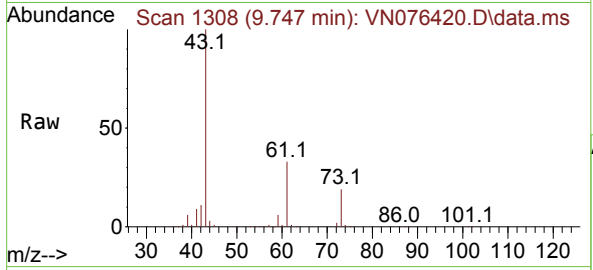




#45
 1,2-Dichloropropane
 Concen: 0.512 ug/l
 RT: 9.747 min Scan# 1308
 Delta R.T. 0.123 min
 Lab File: VN076420.D
 Acq: 26 Jan 2023 15:13

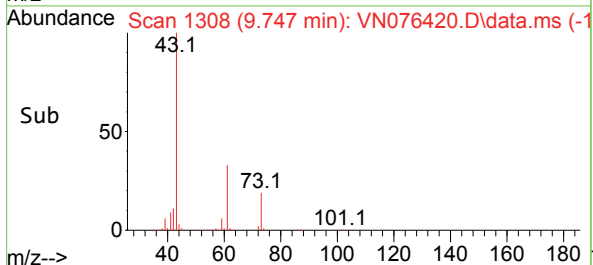
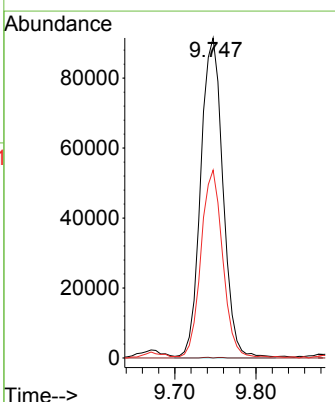
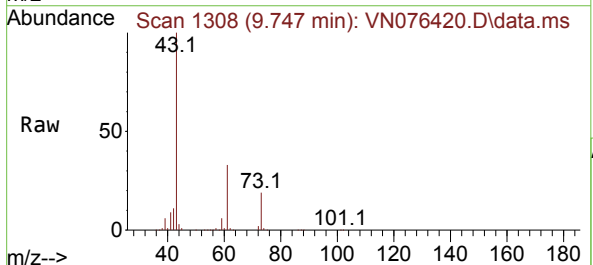
Instrument : MSVOA_N
 ClientSampleId : PB150465ZHE#05

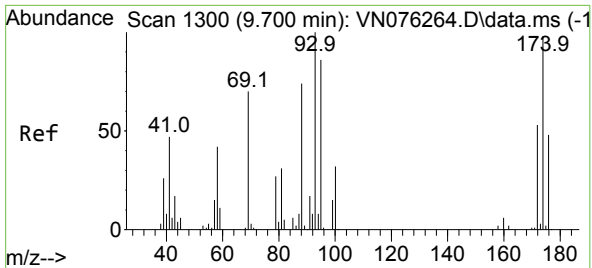
Tgt Ion: 63 Resp: 2371
 Ion Ratio Lower Upper
 63 100
 65 0.0 26.4 39.6#



#48
 Methyl methacrylate
 Concen: 43.627 ug/l
 RT: 9.747 min Scan# 1308
 Delta R.T. 0.065 min
 Lab File: VN076420.D
 Acq: 26 Jan 2023 15:13

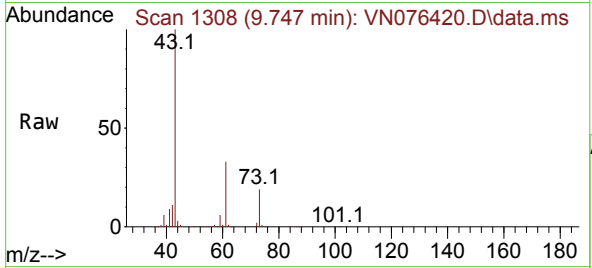
Tgt Ion: 41 Resp: 174164
 Ion Ratio Lower Upper
 41 100
 69 0.1 80.8 121.2#
 39 57.0 54.4 81.6



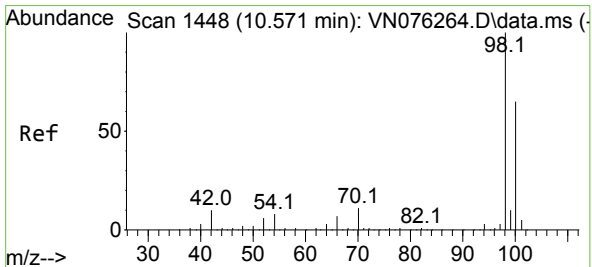
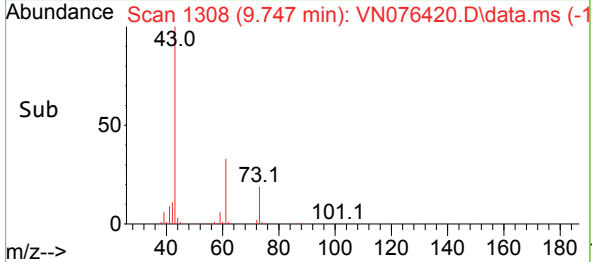
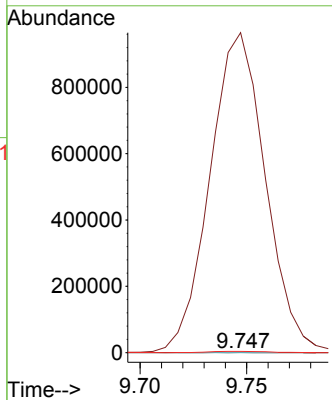


#49
 1,4-Dioxane
 Concen: 4.891 ug/l
 RT: 9.747 min Scan# 11
 Delta R.T. 0.047 min
 Lab File: VN076420.D
 Acq: 26 Jan 2023 15:13

Instrument : MSVOA_N
 ClientSampleId : PB150465ZHE#05

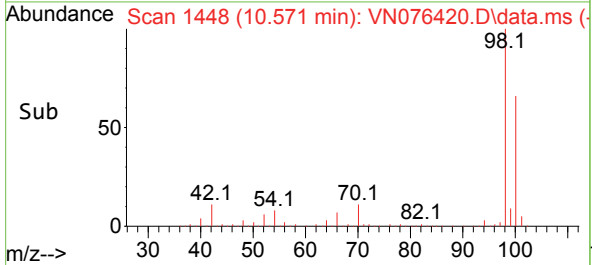
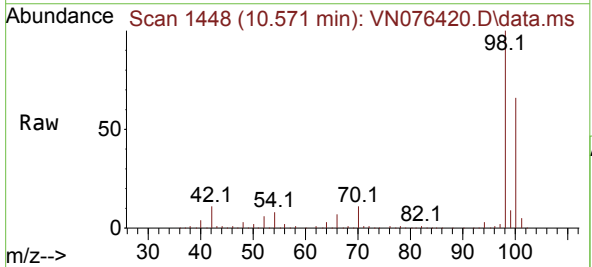
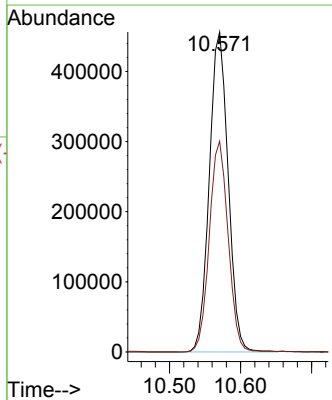


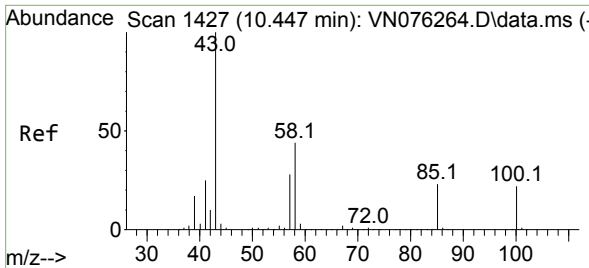
Tgt Ion: 88 Resp: 412
 Ion Ratio Lower Upper
 88 100
 43 427869.2 18.1 27.1#
 58 1908.3 46.5 69.7#



#50
 Toluene-d8
 Concen: 50.005 ug/l
 RT: 10.571 min Scan# 1448
 Delta R.T. -0.000 min
 Lab File: VN076420.D
 Acq: 26 Jan 2023 15:13

Tgt Ion: 98 Resp: 839890
 Ion Ratio Lower Upper
 98 100
 100 65.8 52.2 78.4

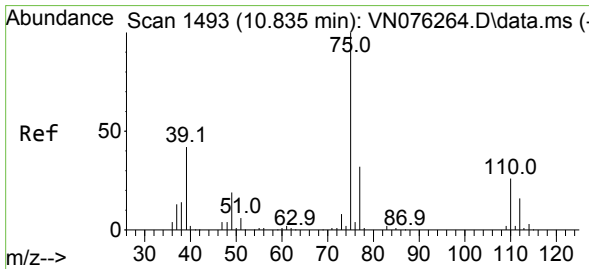
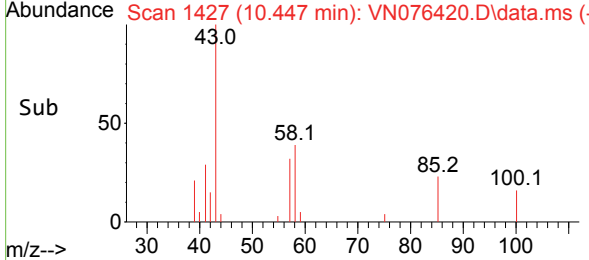
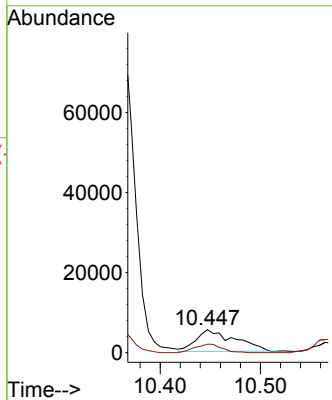
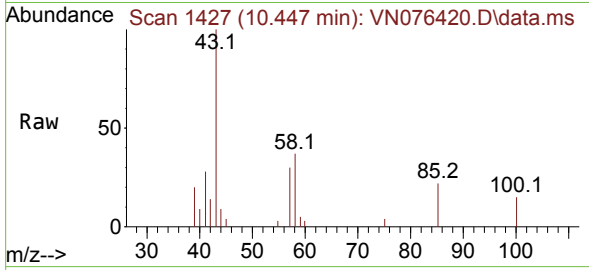




#51
 4-Methyl-2-Pentanone
 Concen: 2.942 ug/l
 RT: 10.447 min Scan# 1427
 Delta R.T. 0.000 min
 Lab File: VN076420.D
 Acq: 26 Jan 2023 15:13

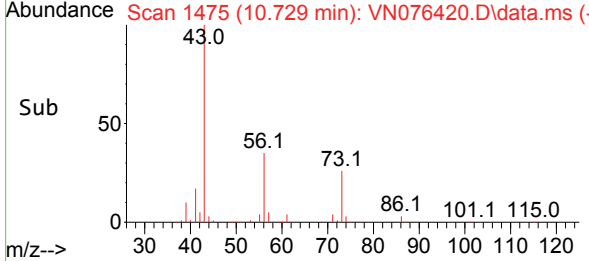
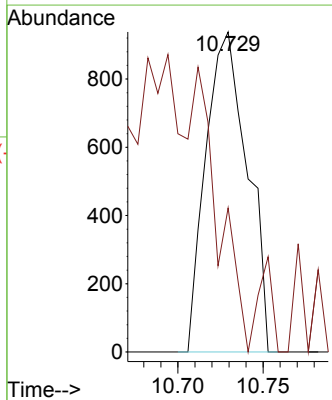
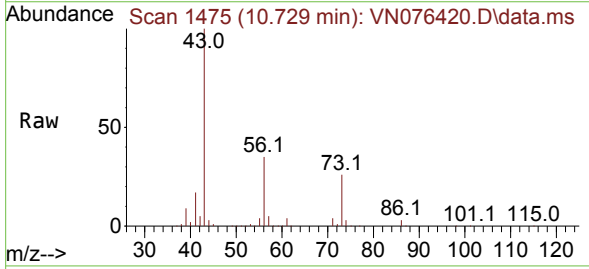
Instrument : MSVOA_N
 ClientSampleId : PB150465ZHE#05

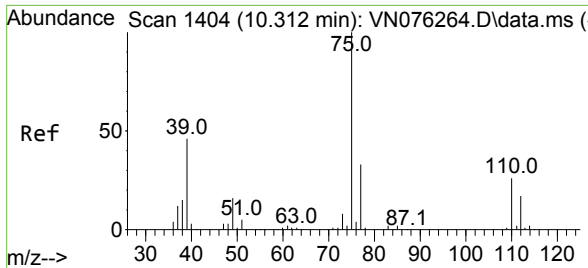
Tgt Ion: 43 Resp: 14564
 Ion Ratio Lower Upper
 43 100
 58 27.1 35.1 52.7#



#53
 t-1,3-Dichloropropene
 Concen: 0.246 ug/l
 RT: 10.729 min Scan# 1475
 Delta R.T. -0.106 min
 Lab File: VN076420.D
 Acq: 26 Jan 2023 15:13

Tgt Ion: 75 Resp: 1591
 Ion Ratio Lower Upper
 75 100
 77 45.0 25.8 38.6#



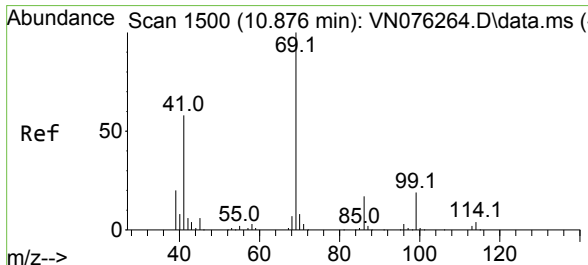
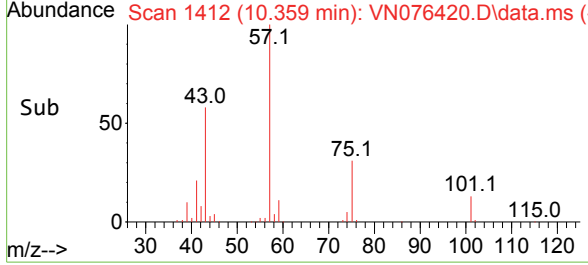
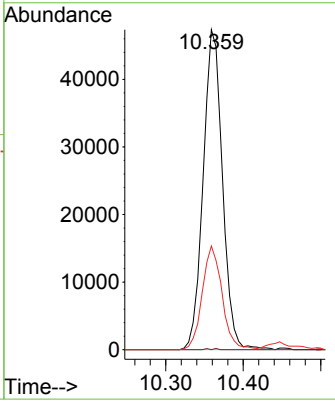
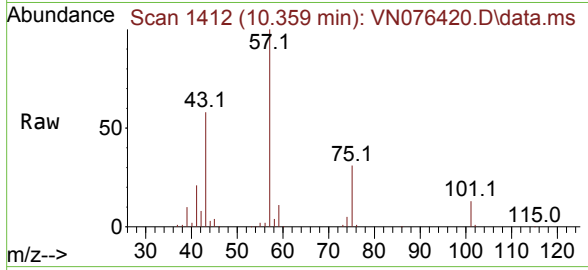


#54
 cis-1,3-Dichloropropene
 Concen: 11.009 ug/l
 RT: 10.359 min Scan# 1412
 Delta R.T. 0.047 min
 Lab File: VN076420.D
 Acq: 26 Jan 2023 15:13

Instrument : MSVOA_N
 ClientSampleId : PB150465ZHE#05

Tgt Ion: 75 Resp: 81801

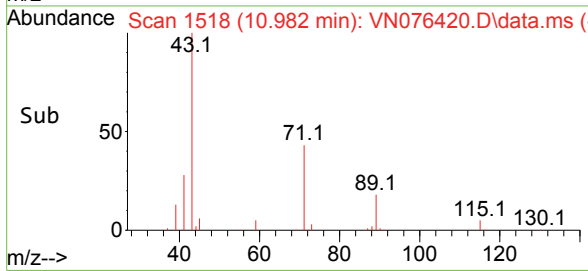
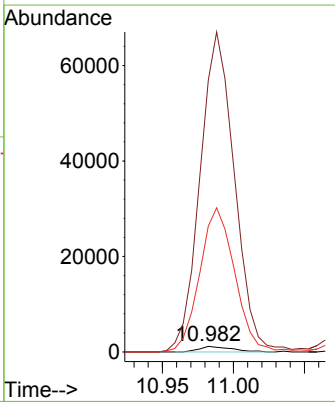
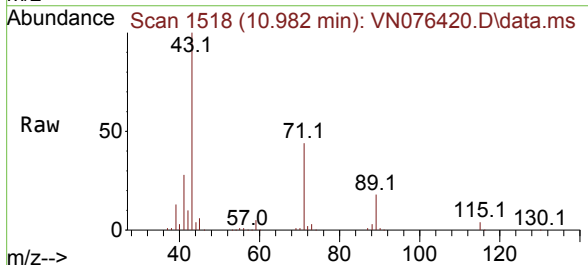
Ion	Ratio	Lower	Upper
75	100		
77	0.0	26.5	39.7#
39	32.4	37.1	55.7#

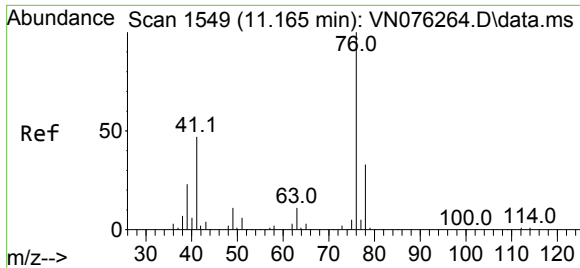


#56
 Ethyl methacrylate
 Concen: 0.291 ug/l
 RT: 10.982 min Scan# 1518
 Delta R.T. 0.106 min
 Lab File: VN076420.D
 Acq: 26 Jan 2023 15:13

Tgt Ion: 69 Resp: 1856

Ion	Ratio	Lower	Upper
69	100		
41	6095.3	45.3	67.9#
39	2815.6	29.3	43.9#

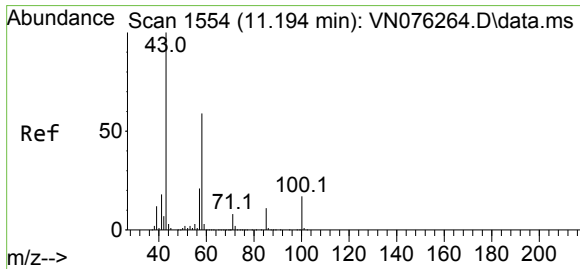
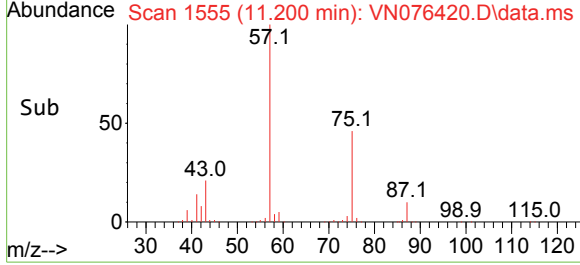
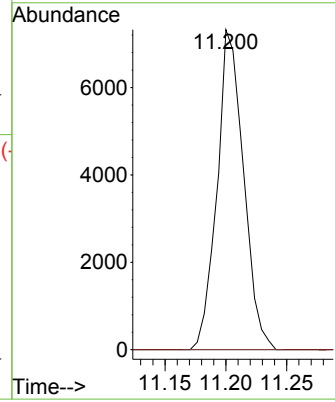
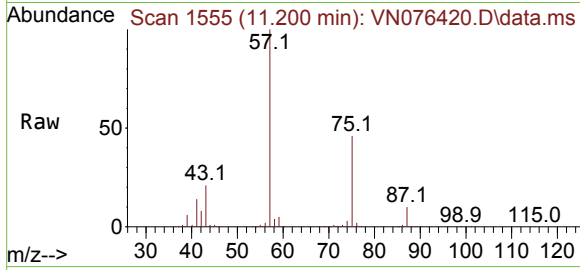




#57
 1,3-Dichloropropane
 Concen: 1.381 ug/l
 RT: 11.200 min Scan# 1111
 Delta R.T. 0.035 min
 Lab File: VN076420.D
 Acq: 26 Jan 2023 15:13

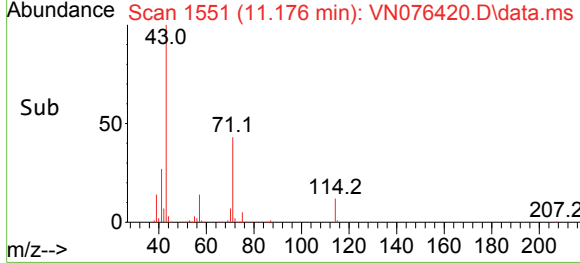
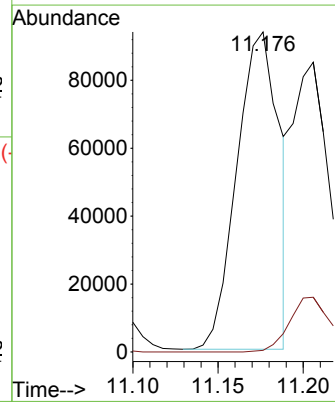
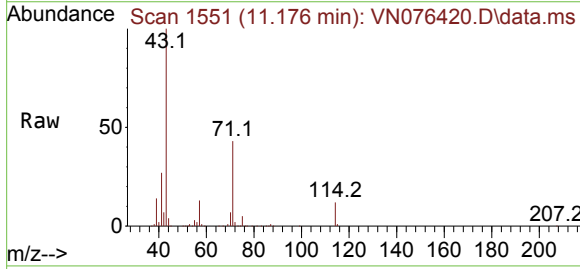
Instrument : MSVOA_N
 ClientSampleId : PB150465ZHE#05

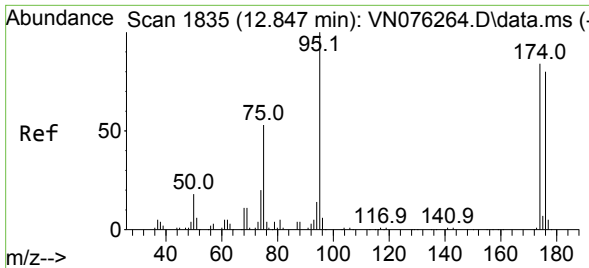
Tgt Ion: 76 Resp: 11088
 Ion Ratio Lower Upper
 76 100
 78 0.0 26.4 39.6#



#59
 2-Hexanone
 Concen: 45.152 ug/l
 RT: 11.176 min Scan# 1551
 Delta R.T. -0.018 min
 Lab File: VN076420.D
 Acq: 26 Jan 2023 15:13

Tgt Ion: 43 Resp: 161968
 Ion Ratio Lower Upper
 43 100
 58 0.0 30.1 90.3#



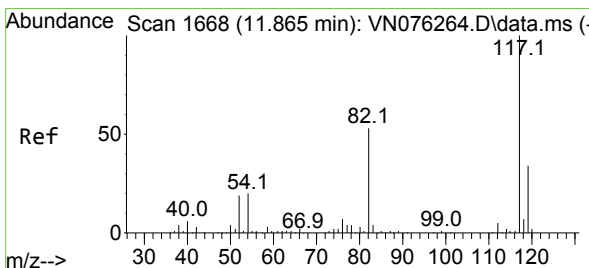
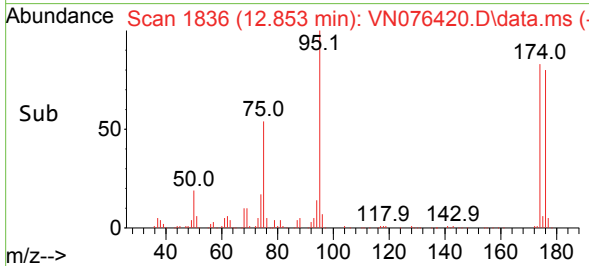
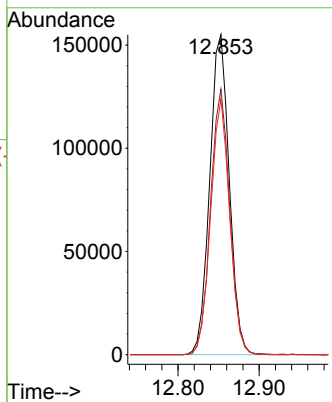
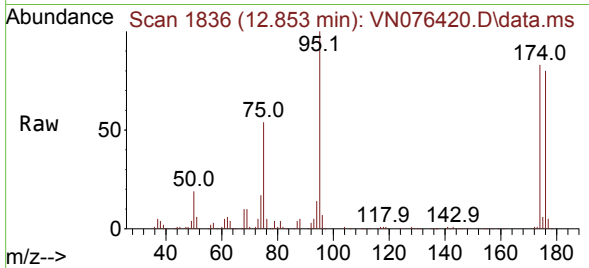


#62
 4-Bromofluorobenzene
 Concen: 47.309 ug/l
 RT: 12.853 min Scan# 1836
 Delta R.T. 0.006 min
 Lab File: VN076420.D
 Acq: 26 Jan 2023 15:13

Instrument : MSVOA_N
 ClientSampleId : PB150465ZHE#05

Tgt Ion: 95 Resp: 259398

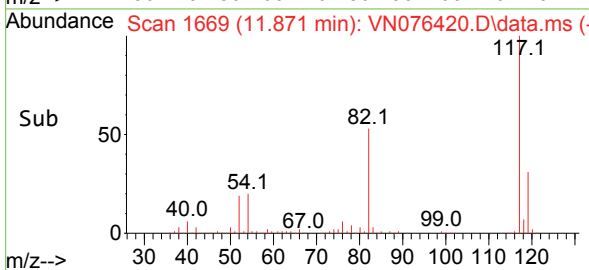
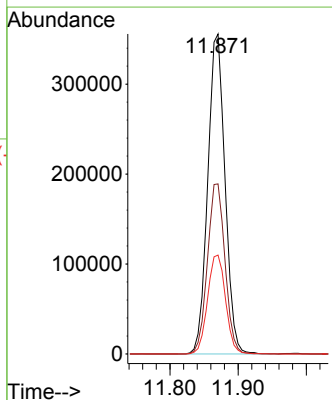
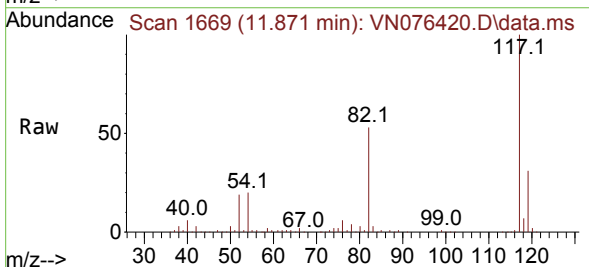
Ion	Ratio	Lower	Upper
95	100		
174	81.5	0.0	174.6
176	77.7	0.0	167.8

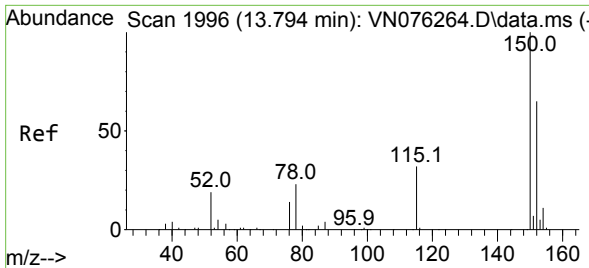


#63
 Chlorobenzene-d5
 Concen: 50.000 ug/l
 RT: 11.871 min Scan# 1669
 Delta R.T. 0.005 min
 Lab File: VN076420.D
 Acq: 26 Jan 2023 15:13

Tgt Ion: 117 Resp: 627064

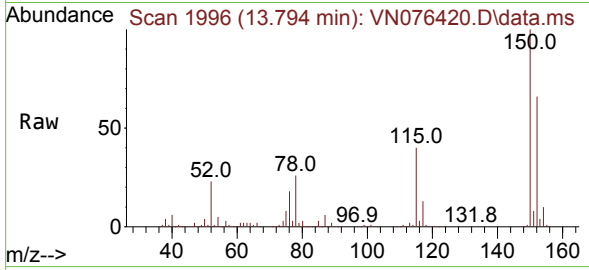
Ion	Ratio	Lower	Upper
117	100		
82	53.2	42.2	63.2
119	30.9	26.9	40.3



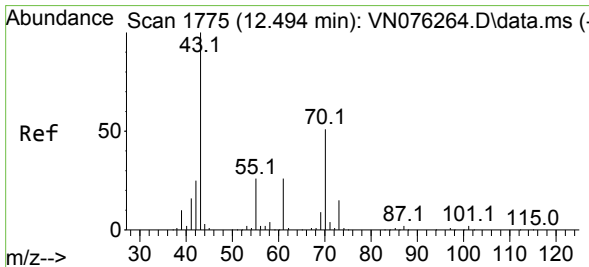
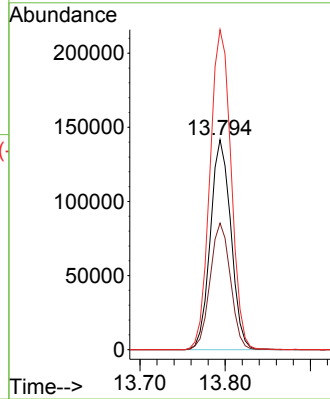
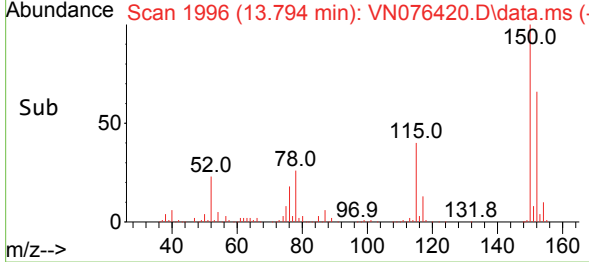


#72
 1,4-Dichlorobenzene-d4
 Concen: 50.000 ug/l
 RT: 13.794 min Scan# 1996
 Delta R.T. -0.000 min
 Lab File: VN076420.D
 Acq: 26 Jan 2023 15:13

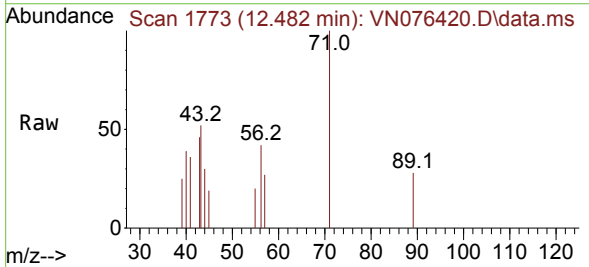
Instrument : MSVOA_N
 ClientSampleId : PB150465ZHE#05



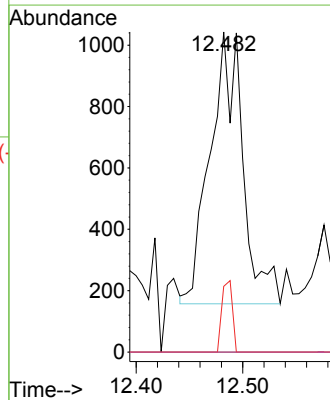
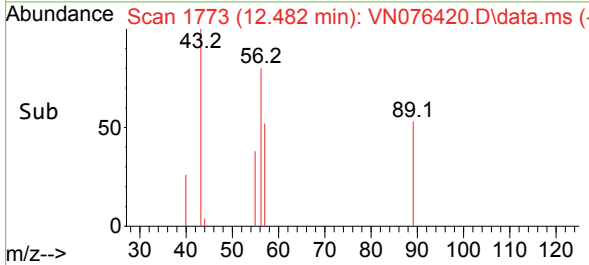
Tgt Ion:152 Resp: 237007
 Ion Ratio Lower Upper
 152 100
 115 59.8 29.6 88.9
 150 156.9 0.0 351.4

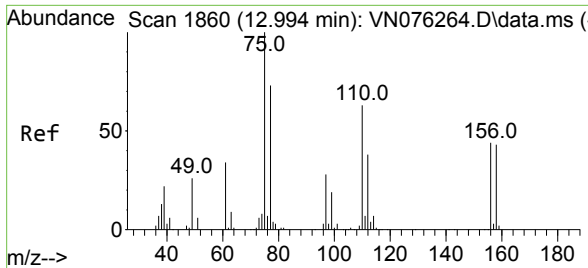


#74
 N-ethyl acetate
 Concen: 0.358 ug/l
 RT: 12.482 min Scan# 1773
 Delta R.T. -0.012 min
 Lab File: VN076420.D
 Acq: 26 Jan 2023 15:13



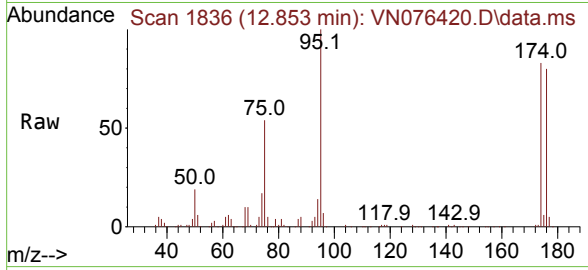
Tgt Ion: 43 Resp: 1889
 Ion Ratio Lower Upper
 43 100
 70 0.0 41.2 61.8#
 55 8.4 21.0 31.6#
 61 0.0 21.6 32.4#



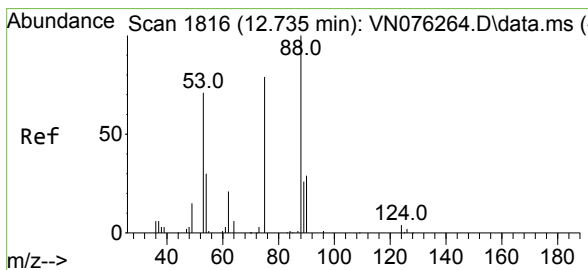
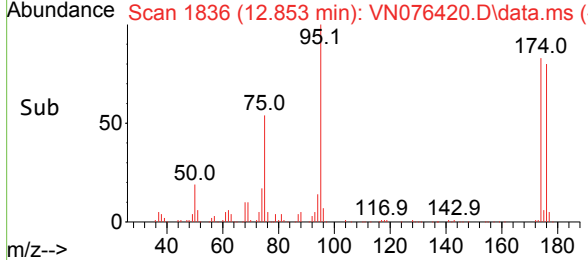
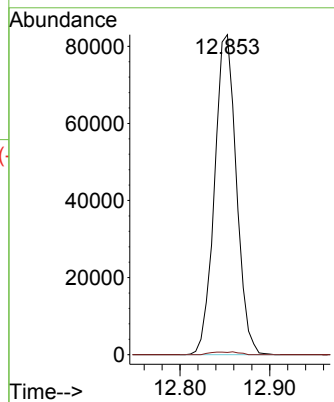


#76
 1,2,3-Trichloropropane
 Concen: 32.204 ug/l
 RT: 12.853 min Scan# 1836
 Delta R.T. -0.141 min
 Lab File: VN076420.D
 Acq: 26 Jan 2023 15:13

Instrument : MSVOA_N
 ClientSampleId : PB150465ZHE#05

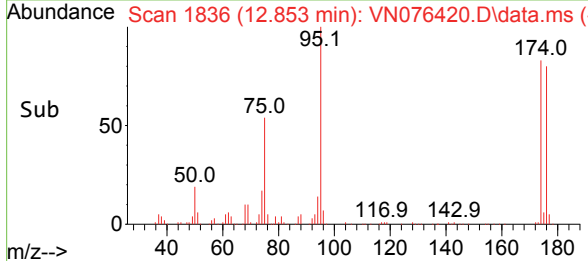
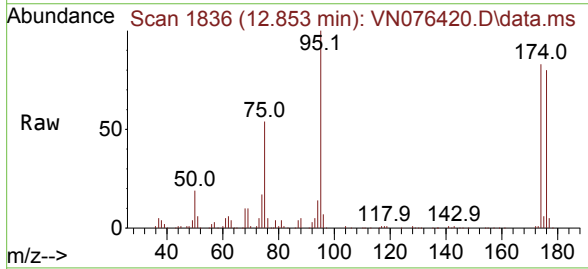
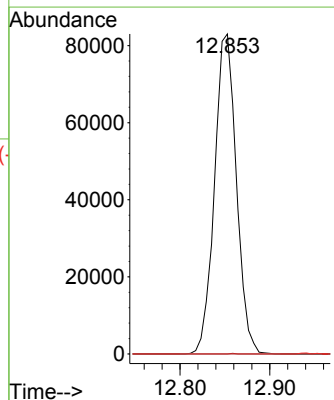


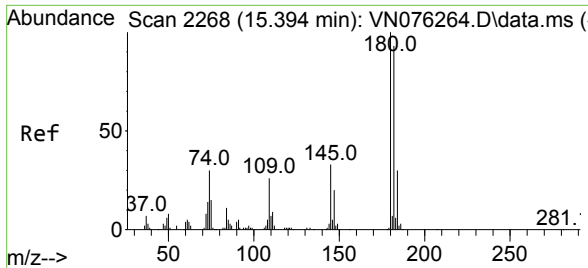
Tgt Ion: 75 Resp: 140502
 Ion Ratio Lower Upper
 75 100
 77 1.1 75.2 225.6#



#81
 trans-1,4-Dichloro-2-butene
 Concen: 98.635 ug/l
 RT: 12.853 min Scan# 1836
 Delta R.T. 0.118 min
 Lab File: VN076420.D
 Acq: 26 Jan 2023 15:13

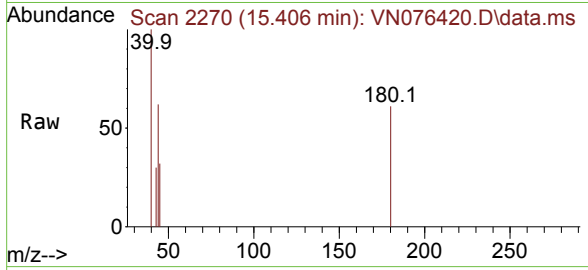
Tgt Ion: 75 Resp: 140502
 Ion Ratio Lower Upper
 75 100
 53 0.0 75.8 113.8#
 89 0.0 37.0 55.6#



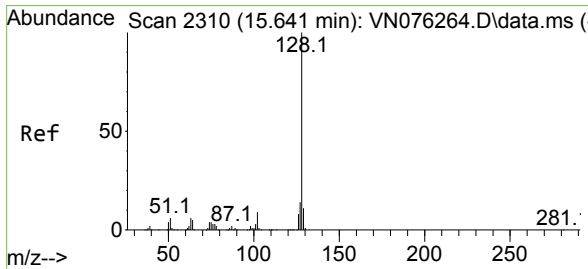
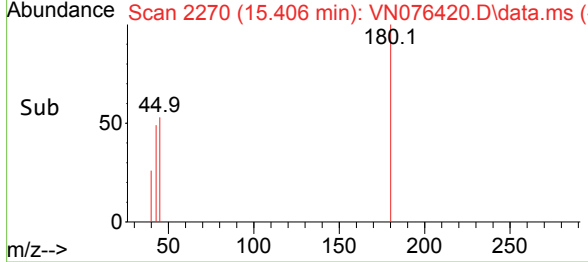
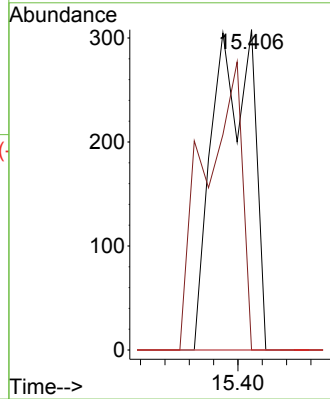


#93
 1,2,4-Trichlorobenzene
 Concen: 1.388 ug/l
 RT: 15.406 min Scan# 211
 Delta R.T. 0.012 min
 Lab File: VN076420.D
 Acq: 26 Jan 2023 15:13

Instrument : MSVOA_N
 ClientSampleId : PB150465ZHE#05

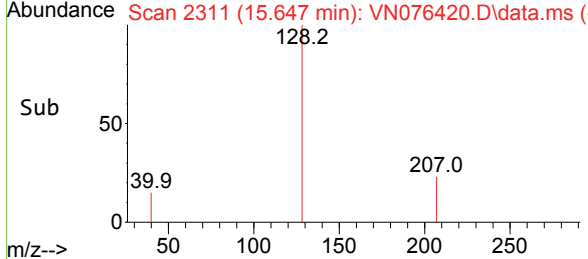
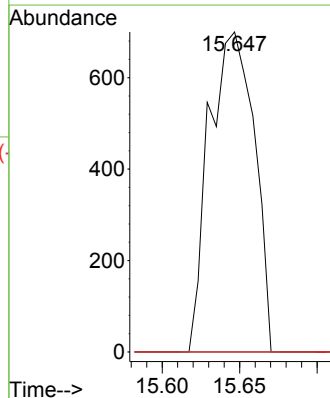
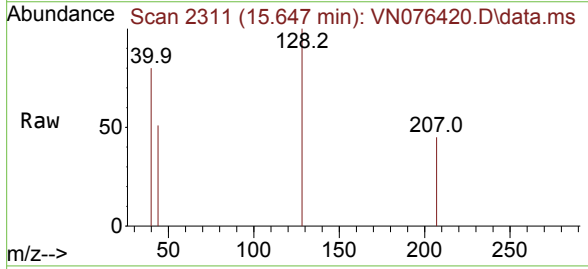


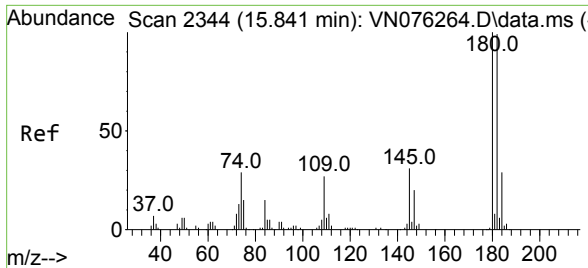
Tgt Ion	Resp	Lower	Upper
180	100		
182	84.4	47.0	141.2
145	0.0	15.2	45.5#



#95
 Naphthalene
 Concen: 1.950 ug/l
 RT: 15.647 min Scan# 2311
 Delta R.T. 0.006 min
 Lab File: VN076420.D
 Acq: 26 Jan 2023 15:13

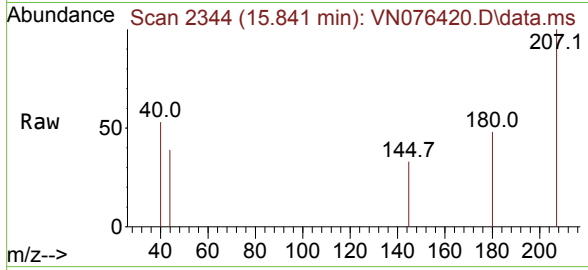
Tgt Ion	Resp	Lower	Upper
128	100		
127	0.0	10.3	15.5#
129	0.0	8.6	13.0#





#96
 1,2,3-Trichlorobenzene
 Concen: 1.205 ug/l
 RT: 15.841 min Scan# 21
 Delta R.T. -0.000 min
 Lab File: VN076420.D
 Acq: 26 Jan 2023 15:13

Instrument :
 MSVOA_N
 ClientSampleId :
 PB150465ZHE#05



Tgt Ion:180 Resp: 207

Ion	Ratio	Lower	Upper
180	100		
182	0.0	47.5	142.5#
145	27.1	15.9	47.6

