

Data Path : Z:\VOASRV\HPCHEM1\MSVOA N\DATA\VN012820\
 Data File : VN059893.D
 Acq On : 28 Jan 2020 13:32
 Operator : JC/MD
 Sample : L1268-01MEDL 100X
 Misc : 2.58g/5mL/100uL/5.00mL/MSVOA_N/MEOH
 ALS Vial : 8 Sample Multiplier: 1

Instrument :
 MSVOA_N
 ClientSampleID :
 30529MEDL

Quant Time: Jan 28 22:32:40 2020
 Quant Method : Z:\VOASRV\HPCHEM1\MSVOA_N\METHODS\82N011320W.M
 Quant Title : SW846 8260
 QLast Update : Sat Jan 18 03:09:32 2020
 Response via : Initial Calibration

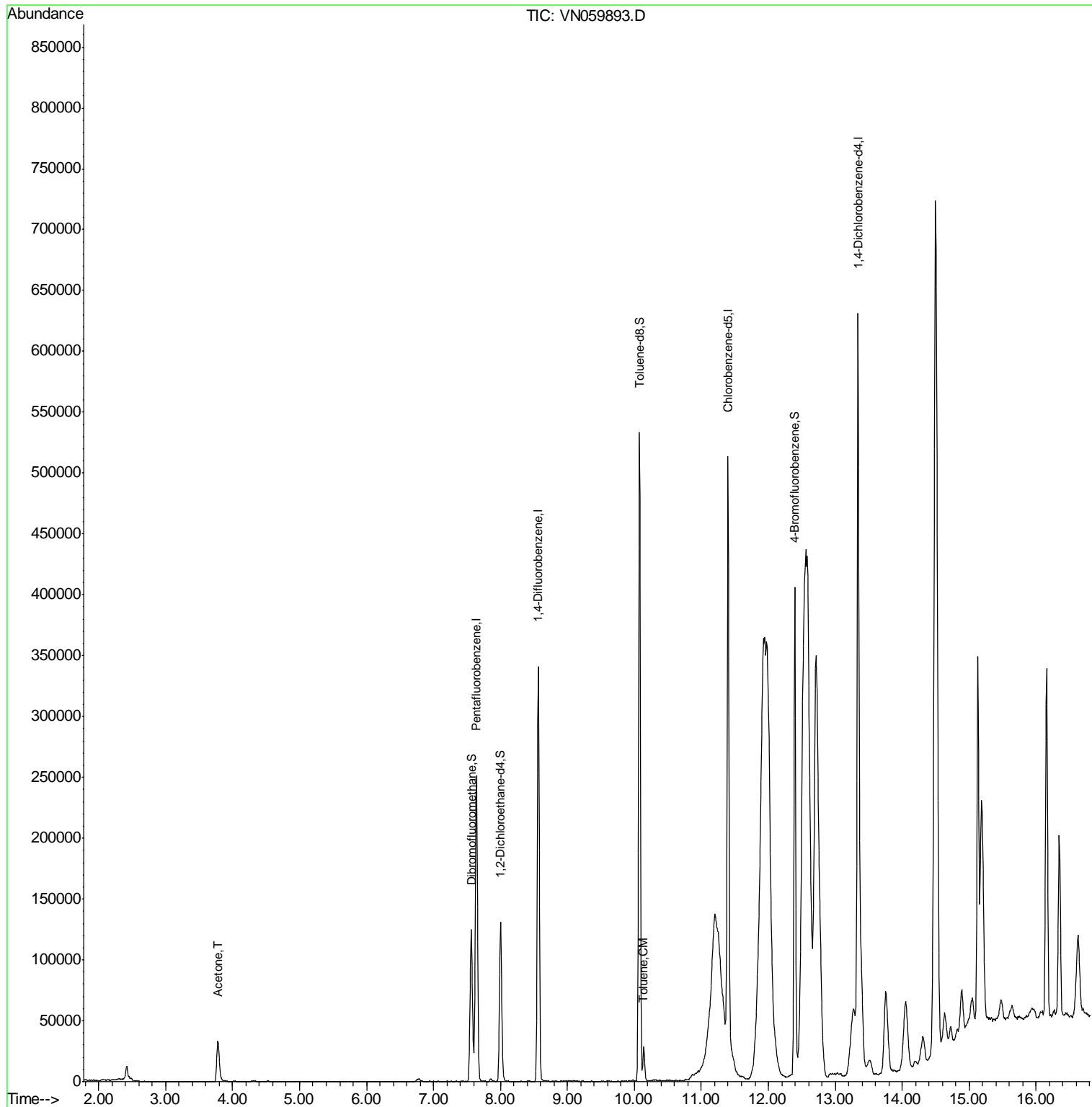
Internal Standards	R.T.	QIon	Response	Conc	Units	Dev(Min)
1) Pentafluorobenzene	7.64	168	212636	50.00	ug/l	0.00
34) 1,4-Difluorobenzene	8.56	114	318805	50.00	ug/l	0.00
63) Chlorobenzene-d5	11.40	117	288603	50.00	ug/l	0.00
72) 1,4-Dichlorobenzene-d4	13.34	152	154153	50.00	ug/l	0.00
System Monitoring Compounds						
33) 1,2-Dichloroethane-d4	8.00	65	113289	47.98	ug/l	0.00
Spiked Amount	50.000		Recovery	=	95.96%	
35) Dibromofluoromethane	7.56	113	94781	49.85	ug/l	0.00
Spiked Amount	50.000		Recovery	=	99.70%	
50) Toluene-d8	10.08	98	375275	50.95	ug/l	0.00
Spiked Amount	50.000		Recovery	=	101.90%	
62) 4-Bromofluorobenzene	12.39	95	133262	50.18	ug/l	0.00
Spiked Amount	50.000		Recovery	=	100.36%	
Target Compounds						
16) Acetone	3.78	43	56484	62.629	ug/l	96
52) Toluene	10.14	92	11959	2.287	ug/l	96

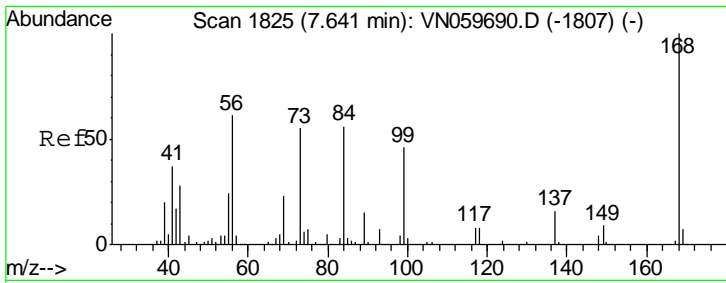
(#) = qualifier out of range (m) = manual integration (+) = signals summed

Data Path : Z:\VOASRV\HPCHEM1\MSVOA N\DATA\VN012820\
 Data File : VN059893.D
 Acq On : 28 Jan 2020 13:32
 Operator : JC/MD
 Sample : L1268-01MEDL 100X
 Misc : 2.58µ/5mL/100uL/5.00mL/MSVOA_N/MEOH
 ALS Vial : 8 Sample Multiplier: 1

Instrument :
 MSVOA_N
 ClientSampleId :
 30529MEDL

Quant Time: Jan 28 22:32:40 2020
 Quant Method : Z:\VOASRV\HPCHEM1\MSVOA_N\METHODS\82N011320W.M
 Quant Title : SW846 8260
 QLast Update : Sat Jan 18 03:09:32 2020
 Response via : Initial Calibration

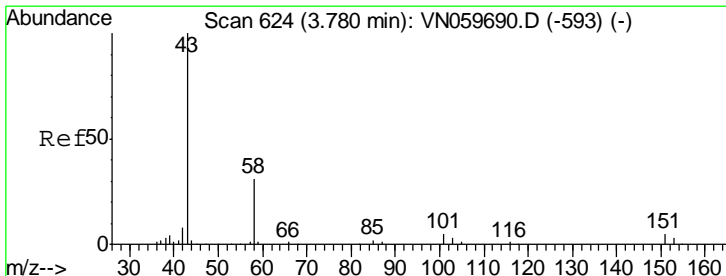
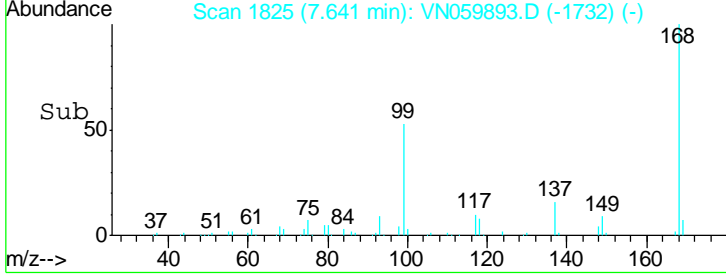
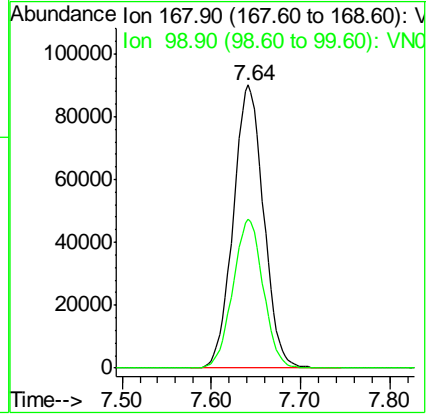
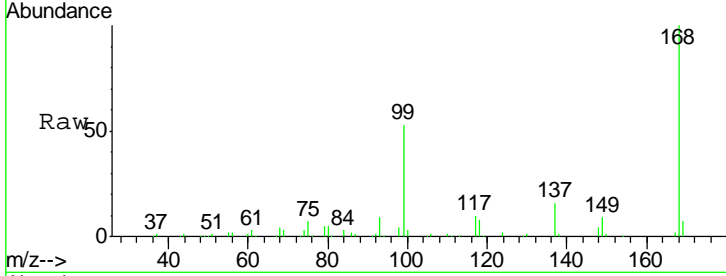




#1
 Pentafluorobenzene
 Concen: 50.000 ug/l
 RT: 7.64 min Scan# 1825
 Delta R.T. 0.00 min
 Lab File: VN059893.D
 Acq: 28 Jan 2020 13:32

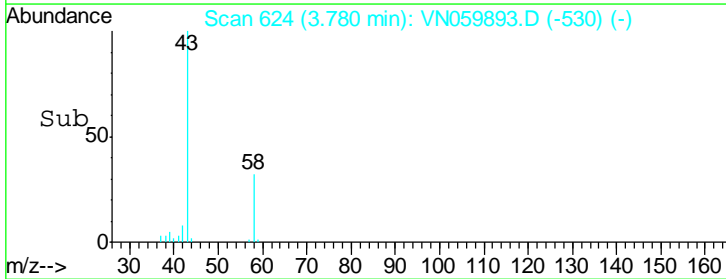
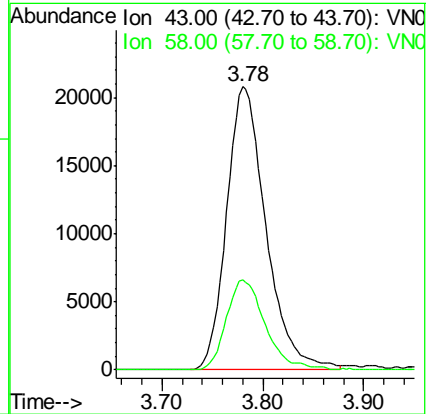
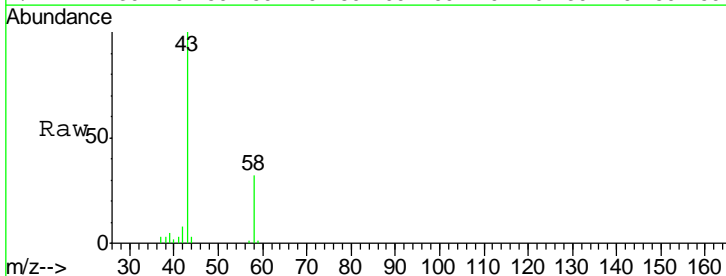
Instrument :
 MSVOA_N
 ClientSampled :
 30529MEDL

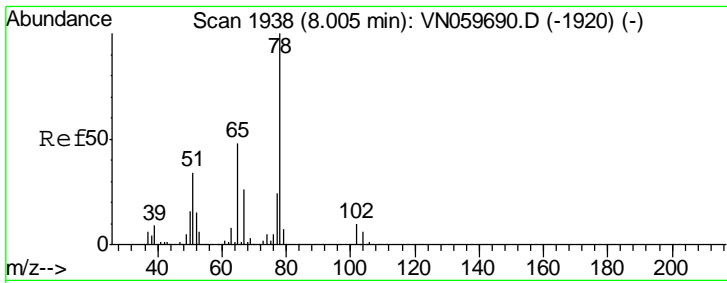
Tot Ion: 168 Resp: 212636
 Ion Ratio Lower Upper
 168 100
 99 52.7 48.2 72.4



#16
 Acetone
 Concen: 62.629 ug/l
 RT: 3.78 min Scan# 624
 Delta R.T. 0.00 min
 Lab File: VN059893.D
 Acq: 28 Jan 2020 13:32

Tgt Ion: 43 Resp: 56484
 Ion Ratio Lower Upper
 43 100
 58 31.8 23.6 35.4

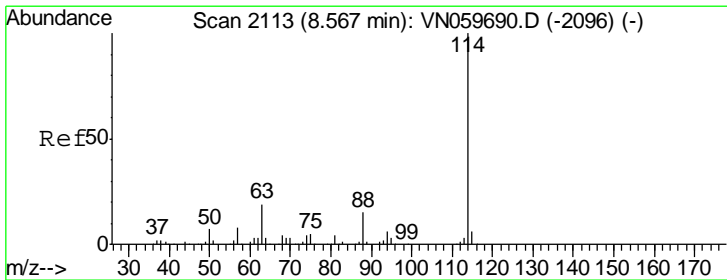
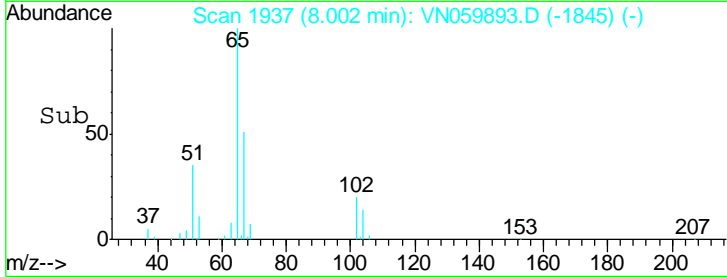
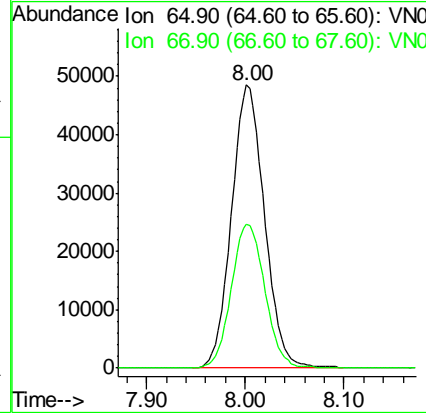
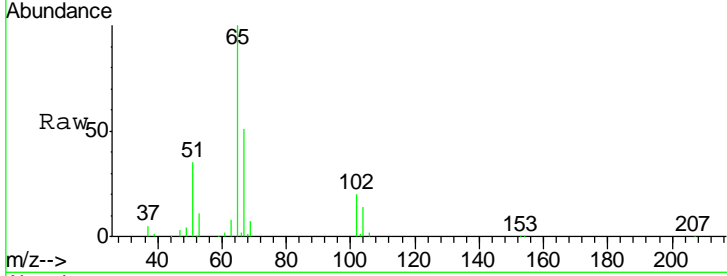




#33
 1,2-Dichloroethane-d4
 Concen: 47.976 ug/l
 RT: 8.00 min Scan# 1937
 Delta R.T. -0.00 min
 Lab File: VN059893.D
 Acq: 28 Jan 2020 13:32

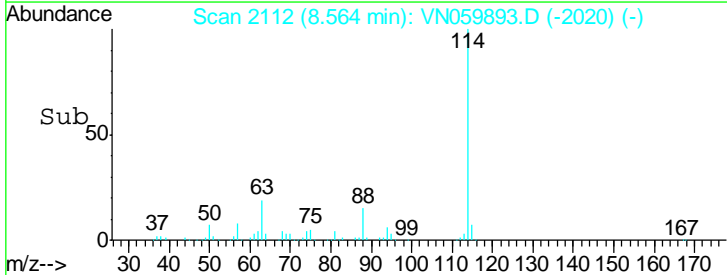
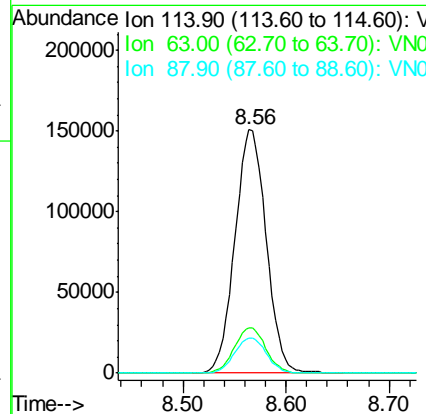
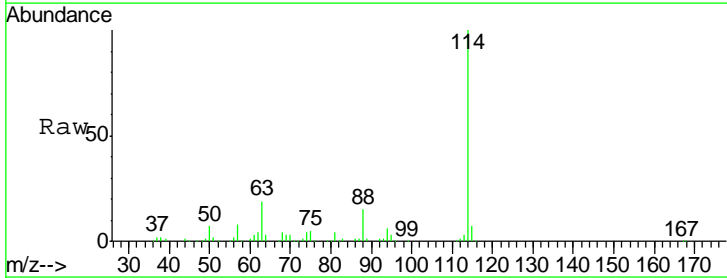
Instrument :
 MSVOA_N
 ClientSampled :
 30529MEDL

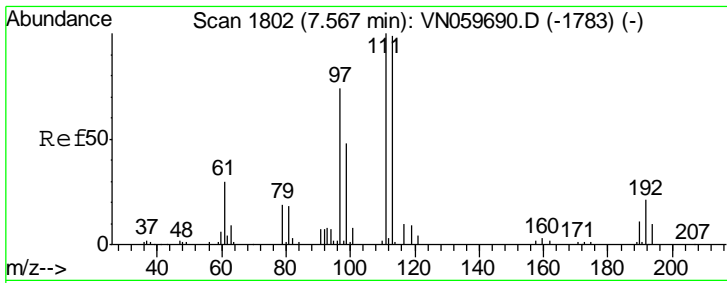
Tgt Ion: 65 Resp: 113289
 Ion Ratio Lower Upper
 65 100
 67 51.8 0.0 103.0



#34
 1,4-Difluorobenzene
 Concen: 50.000 ug/l
 RT: 8.56 min Scan# 2112
 Delta R.T. -0.00 min
 Lab File: VN059893.D
 Acq: 28 Jan 2020 13:32

Tgt Ion: 114 Resp: 318805
 Ion Ratio Lower Upper
 114 100
 63 18.8 0.0 43.6
 88 14.6 0.0 31.4

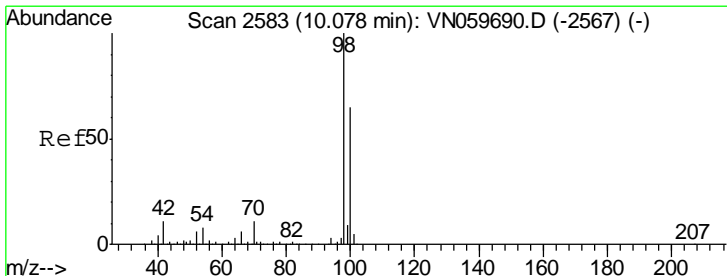
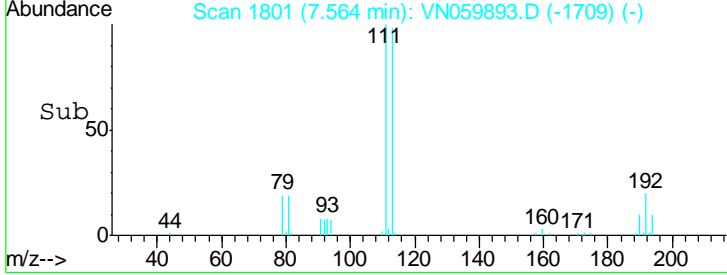
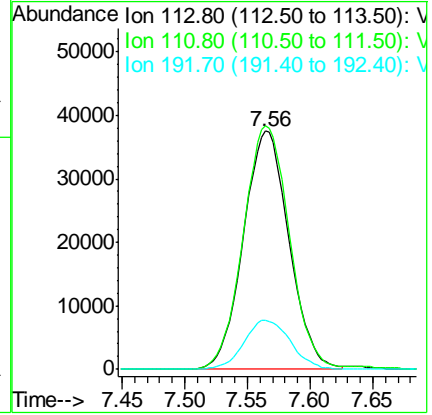
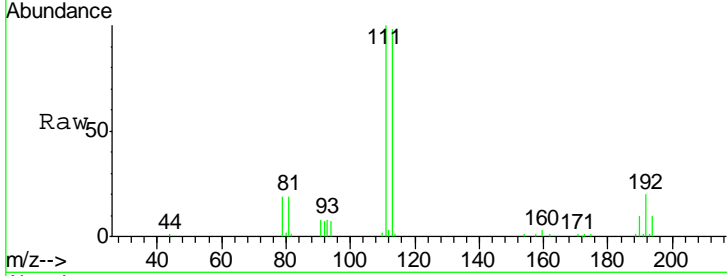




#35
 Dibromofluoromethane
 Concen: 49.854 ug/l
 RT: 7.56 min Scan# 1801
 Delta R.T. -0.00 min
 Lab File: VN059893.D
 Acq: 28 Jan 2020 13:32

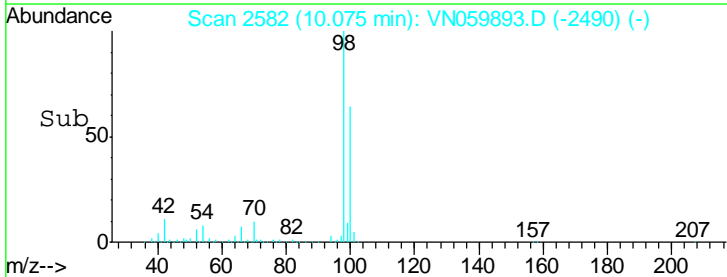
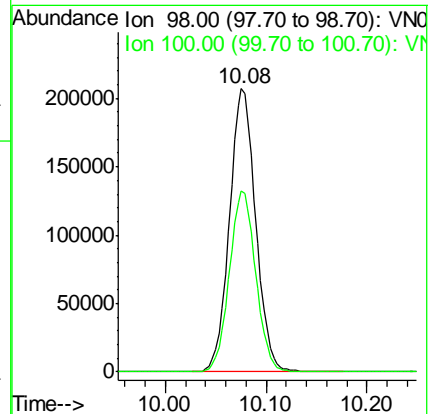
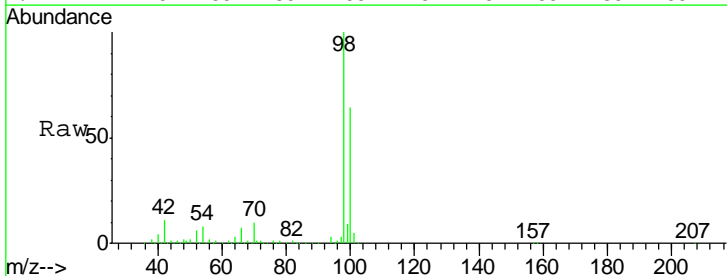
Instrument :
 MSVOA_N
 ClientSampled :
 30529MEDL

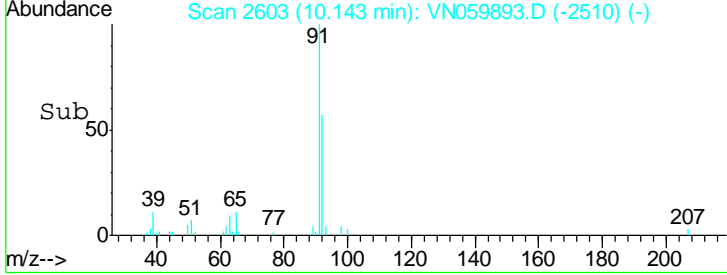
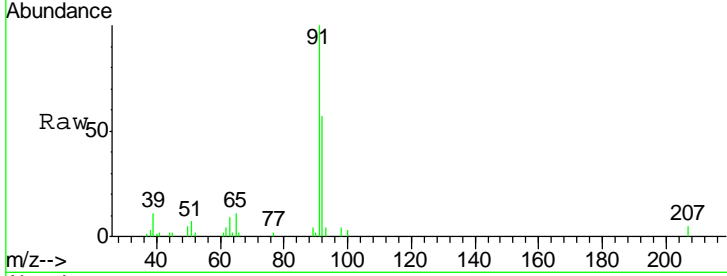
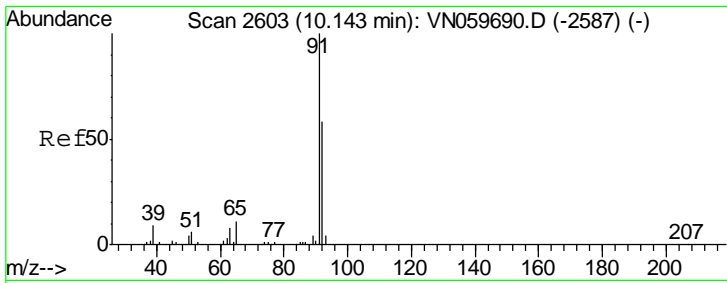
Tgt Ion	Resp	Lower	Upper
113	100		
111	103.6	83.5	125.3
192	21.0	15.4	23.2



#50
 Toluene-d8
 Concen: 50.946 ug/l
 RT: 10.08 min Scan# 2582
 Delta R.T. -0.00 min
 Lab File: VN059893.D
 Acq: 28 Jan 2020 13:32

Tgt Ion	Resp	Lower	Upper
98	100		
100	64.5	51.2	76.8

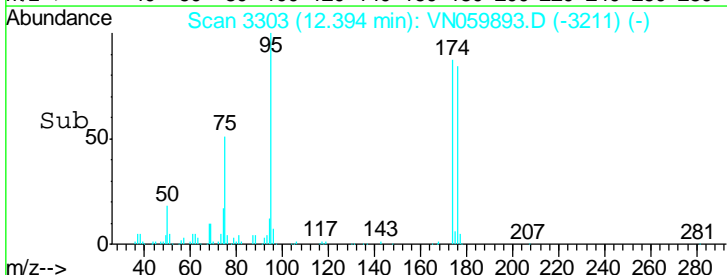
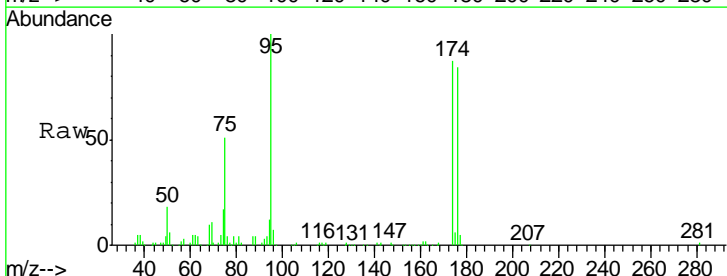
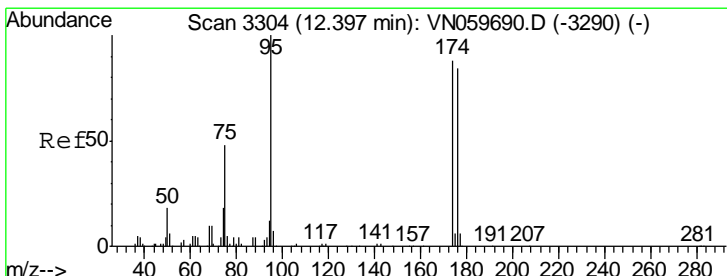
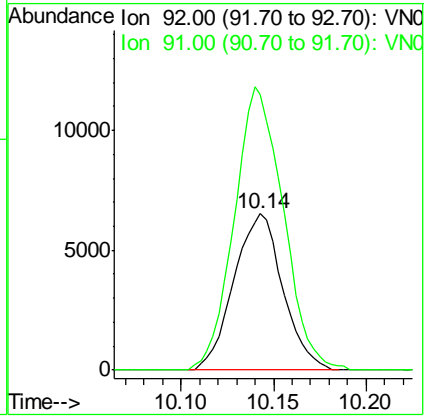




#52
 Toluene
 Concen: 2.287 ug/l
 RT: 10.14 min Scan# 2603
 Delta R.T. 0.00 min
 Lab File: VN059893.D
 Acq: 28 Jan 2020 13:32

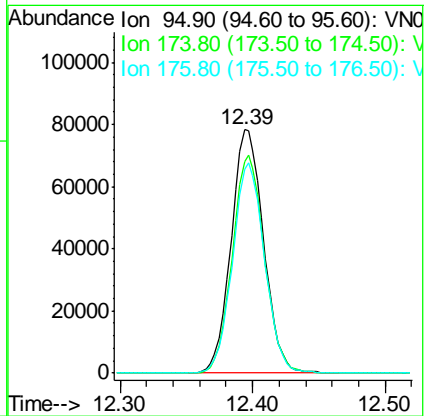
Instrument :
 MSVOA_N
 ClientSampled :
 30529MEDL

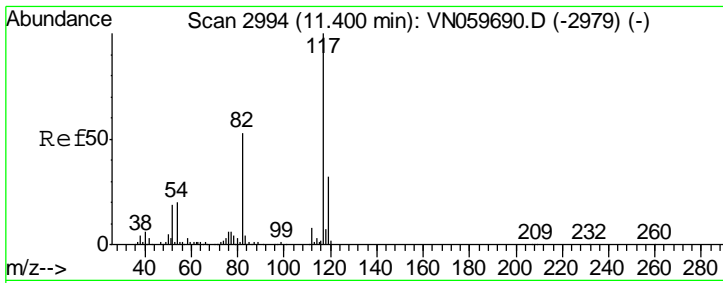
Tgt Ion	Resp	Lower	Upper
92	11959		
92	100		
91	181.1	140.4	210.6



#62
 4-Bromofluorobenzene
 Concen: 50.184 ug/l
 RT: 12.39 min Scan# 3303
 Delta R.T. -0.00 min
 Lab File: VN059893.D
 Acq: 28 Jan 2020 13:32

Tgt Ion	Resp	Lower	Upper
95	133262		
95	100		
174	88.3	0.0	151.4
176	85.1	0.0	146.0

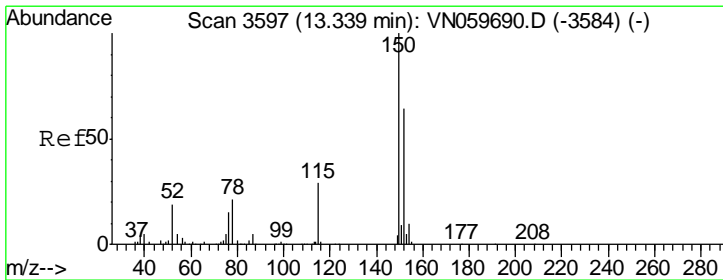
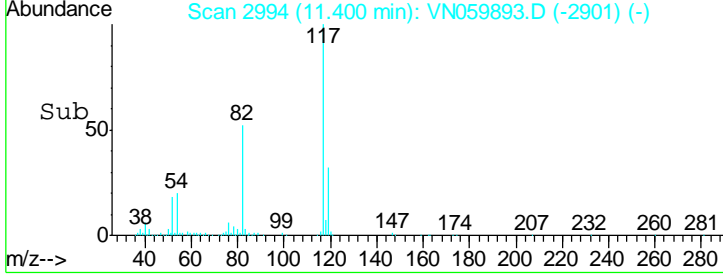
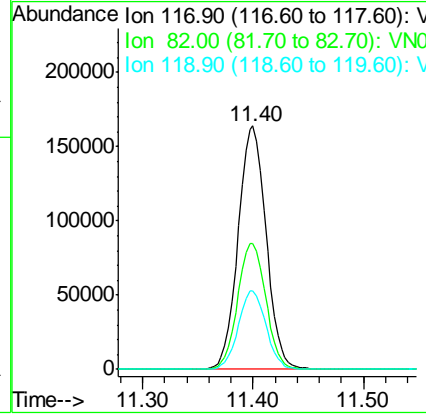
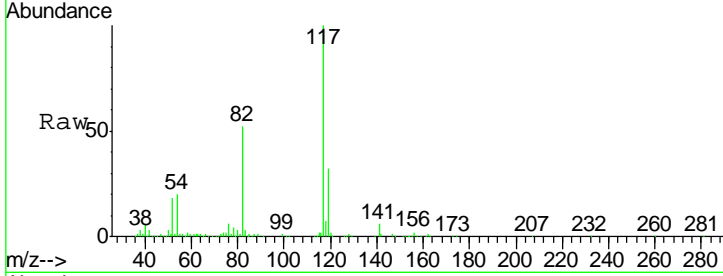




#63
 Chlorobenzene-d5
 Concen: 50.000 ug/l
 RT: 11.40 min Scan# 2994
 Delta R.T. 0.00 min
 Lab File: VN059893.D
 Acq: 28 Jan 2020 13:32

Instrument :
 MSVOA_N
 ClientSampled :
 30529MEDL

Tgt Ion	Resp	Lower	Upper
117	288603		
82	51.8	45.9	68.9
119	32.3	25.5	38.3



#72
 1,4-Dichlorobenzene-d4
 Concen: 50.000 ug/l
 RT: 13.34 min Scan# 3597
 Delta R.T. 0.00 min
 Lab File: VN059893.D
 Acq: 28 Jan 2020 13:32

Tgt Ion	Resp	Lower	Upper
152	154153		
115	72.5	30.3	90.9
150	137.4	0.0	345.2

