

Data Path : Z:\voasrv\HPCHEM1\MSVOA\_N\Data\VN012821\  
 Data File : VN065661.D  
 Acq On : 28 Jan 2021 19:56  
 Operator : JC/MD  
 Sample : M1254-08  
 Misc : 5.00mL/MSVOA\_N/WATER  
 ALS Vial : 24 Sample Multiplier: 1

Instrument :  
 MSVOA\_N  
 ClientSampled :  
 CRT-5

Manual Integrations  
 APPROVED

MMDadoda  
 1/29/2021 12:00:14 PM

Quant Time: Jan 29 01:26:25 2021  
 Quant Method : Z:\voasrv\HPCHEM1\MSVOA\_N\methods\82N012521W.M  
 Quant Title : SW846 8260  
 QLast Update : Mon Jan 25 13:47:28 2021  
 Response via : Initial Calibration

Compound	R.T.	QIon	Response	Conc	Units	Dev(Min)
-----						
Internal Standards						
1) Pentafluorobenzene	7.624	168	199131	50.00	ug/l	0.00
34) 1,4-Difluorobenzene	8.547	114	348173	50.00	ug/l	0.00
63) Chlorobenzene-d5	11.376	117	302498	50.00	ug/l	0.00
72) 1,4-Dichlorobenzene-d4	13.315	152	112341	50.00	ug/l	0.00
System Monitoring Compounds						
33) 1,2-Dichloroethane-d4	7.987	65	126579	48.32	ug/l	0.00
Spiked Amount	50.000	Range	61 - 141	Recovery	=	96.64%
35) Dibromofluoromethane	7.550	113	99171	48.07	ug/l	0.00
Spiked Amount	50.000	Range	69 - 133	Recovery	=	96.14%
50) Toluene-d8	10.058	98	431833	53.25	ug/l	0.00
Spiked Amount	50.000	Range	65 - 126	Recovery	=	106.50%
62) 4-Bromofluorobenzene	12.373	95	143950	49.29	ug/l	0.00
Spiked Amount	50.000	Range	58 - 135	Recovery	=	98.58%
Target Compounds						
						Qvalue
16) Acetone	3.785	43	5995	5.88	ug/l	96
18) Methyl Acetate	4.283	43	3942m	1.38	ug/l	
20) Methylene Chloride	4.502	84	430459	152.42	ug/l	97
-----						

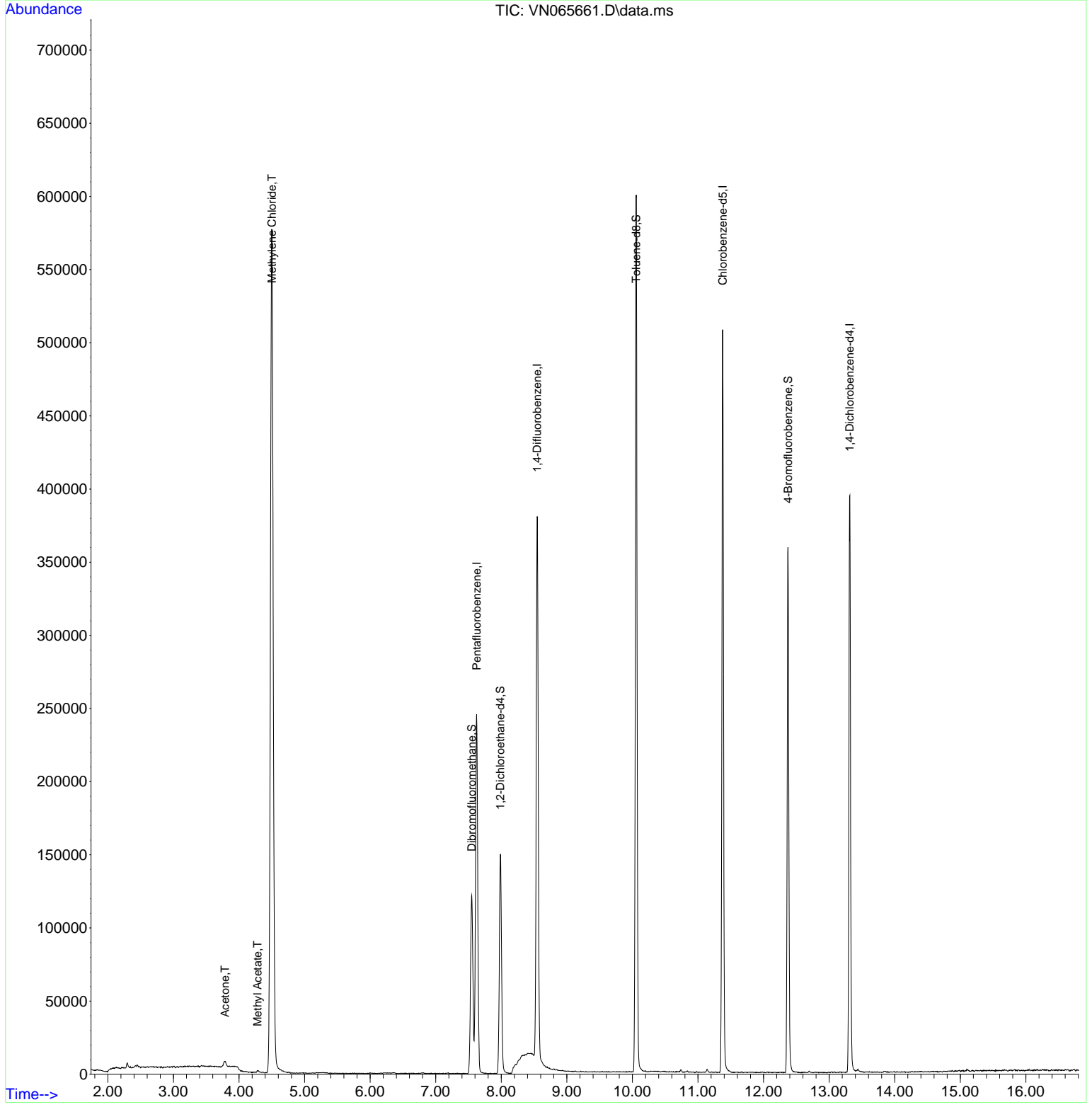
(#) = qualifier out of range (m) = manual integration (+) = signals summed

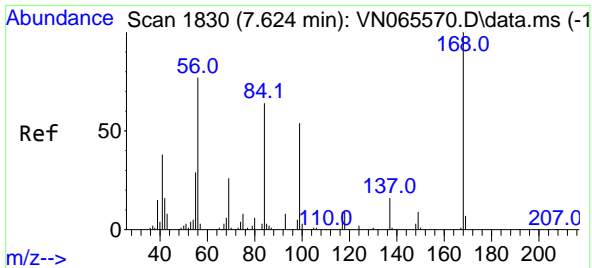
Data Path : Z:\voasrv\HPCHEM1\MSVOA\_N\Data\VN012821\  
 Data File : VN065661.D  
 Acq On : 28 Jan 2021 19:56  
 Operator : JC/MD  
 Sample : M1254-08  
 Misc : 5.00mL/MSVOA\_N/WATER  
 ALS Vial : 24 Sample Multiplier: 1

Instrument :  
 MSVOA\_N  
 ClientSampled :  
 CRT-5

Quant Time: Jan 29 01:26:25 2021  
 Quant Method : Z:\voasrv\HPCHEM1\MSVOA\_N\methods\82N012521W.M  
 Quant Title : SW846 8260  
 QLast Update : Mon Jan 25 13:47:28 2021  
 Response via : Initial Calibration

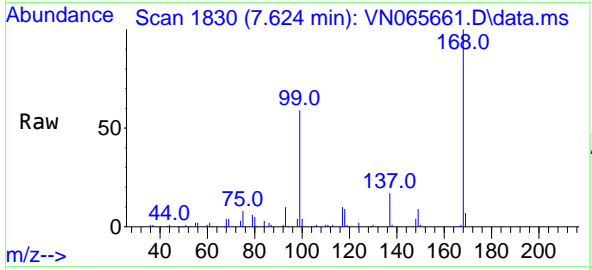
Manual Integrations  
**APPROVED**  
 MMDadoda  
 1/29/2021 12:00:14 PM





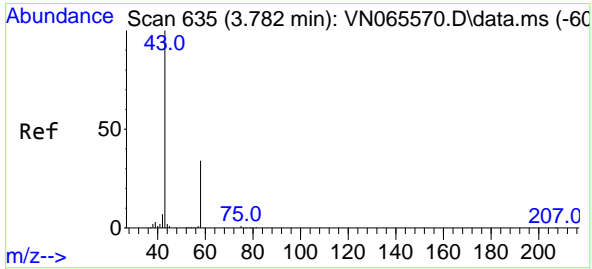
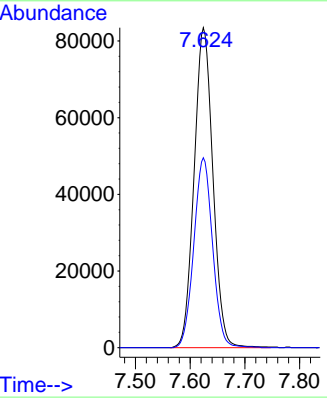
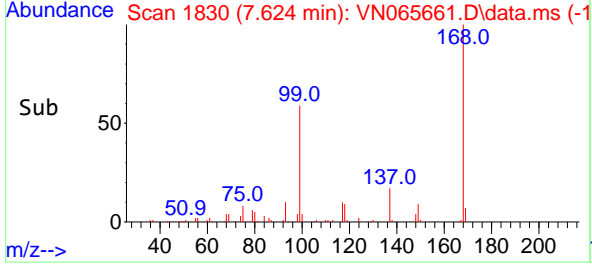
#1  
 Pentafluorobenzene  
 Concen: 50.00 ug/l  
 RT: 7.624 min Scan# 1830  
 Delta R.T. 0.000 min  
 Lab File: VN065661.D  
 Acq: 28 Jan 2021 19:56

Instrument :  
 MSVOA\_N  
 ClientSampled :  
 CRT-5

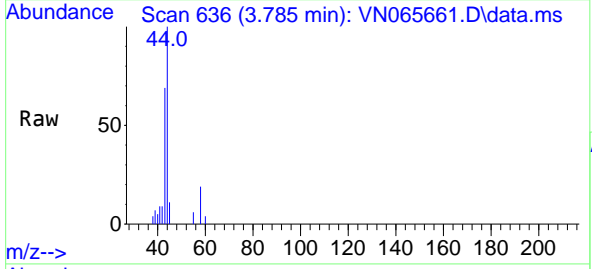


Tgt Ion:168 Resp: 199131  
 Ion Ratio Lower Upper  
 168 100  
 99 59.4 42.6 63.8

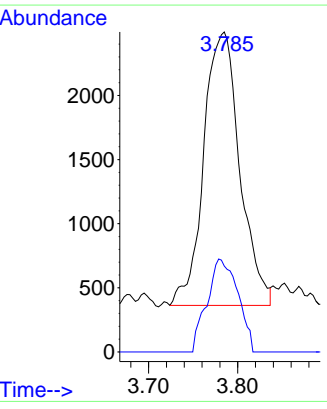
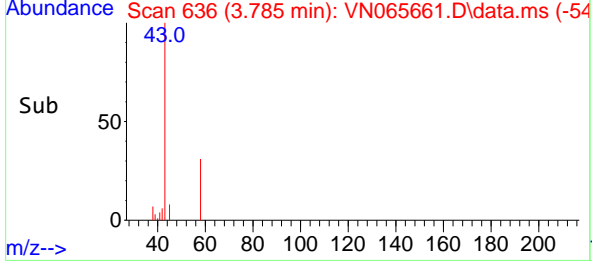
Manual Integrations  
**APPROVED**  
 MMDadoda  
 1/29/2021 12:00:14 PM

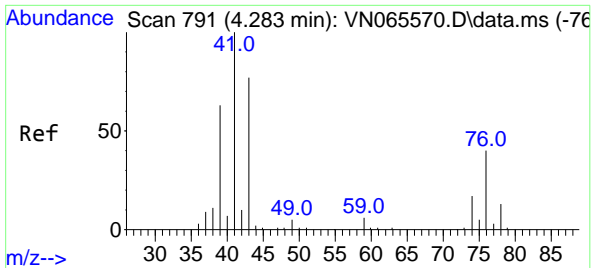


#16  
 Acetone  
 Concen: 5.88 ug/l  
 RT: 3.785 min Scan# 636  
 Delta R.T. 0.003 min  
 Lab File: VN065661.D  
 Acq: 28 Jan 2021 19:56



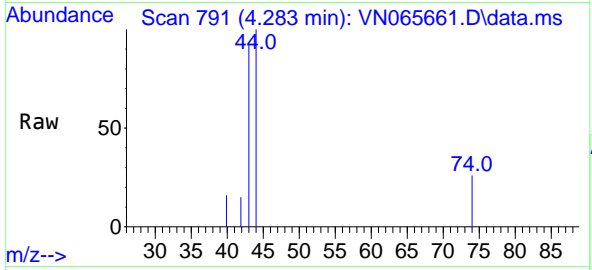
Tgt Ion: 43 Resp: 5995  
 Ion Ratio Lower Upper  
 43 100  
 58 31.4 27.0 40.6





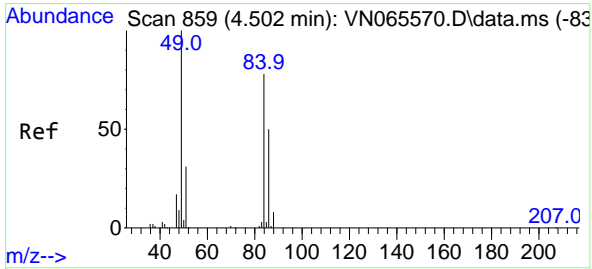
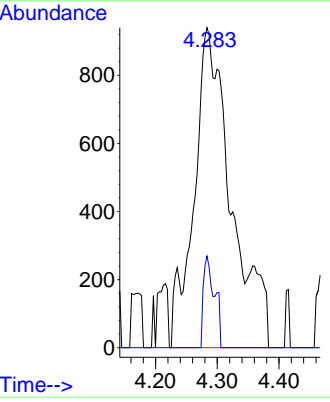
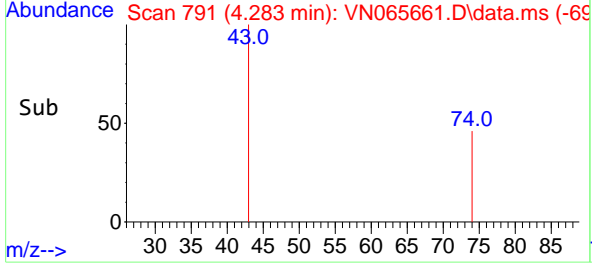
#18  
 Methyl Acetate  
 Concen: 1.38 ug/l m  
 RT: 4.283 min Scan# 791  
 Delta R.T. 0.000 min  
 Lab File: VN065661.D  
 Acq: 28 Jan 2021 19:56

**Instrument :**  
 MSVOA\_N  
**ClientSampled :**  
 CRT-5

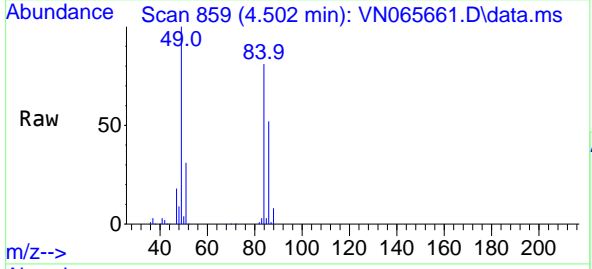


Tgt Ion: 43 Resp: 3942  
 Ion Ratio Lower Upper  
 43 100  
 74 8.5 19.5 29.3#

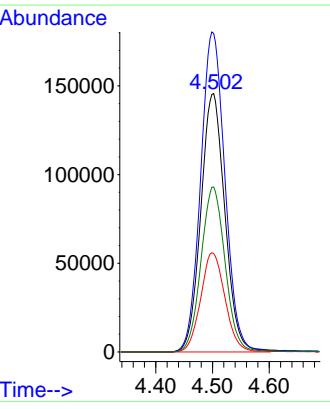
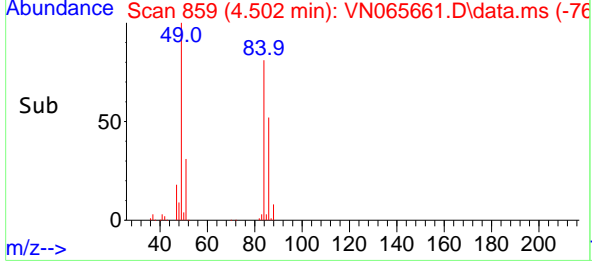
**Manual Integrations**  
**APPROVED**  
 MMDadoda  
 1/29/2021 12:00:14 PM

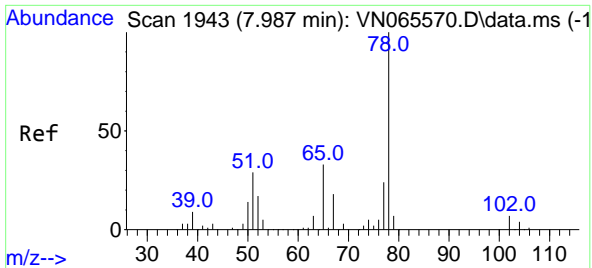


#20  
 Methylene Chloride  
 Concen: 152.42 ug/l  
 RT: 4.502 min Scan# 859  
 Delta R.T. 0.000 min  
 Lab File: VN065661.D  
 Acq: 28 Jan 2021 19:56



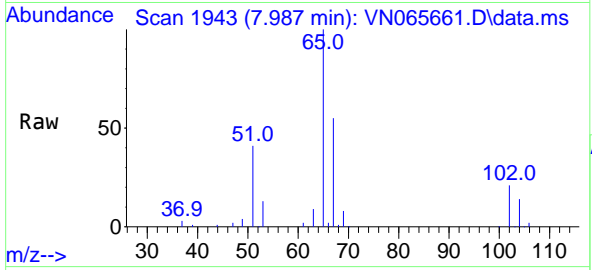
Tgt Ion: 84 Resp: 430459  
 Ion Ratio Lower Upper  
 84 100  
 49 123.3 94.6 141.8  
 51 38.1 29.9 44.9  
 86 63.9 51.4 77.2





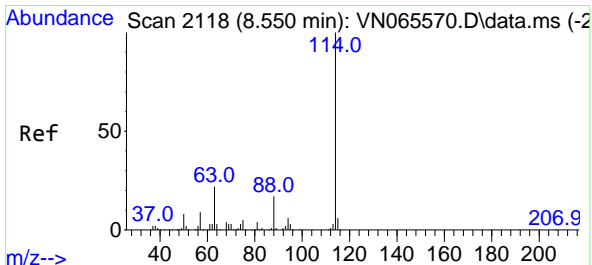
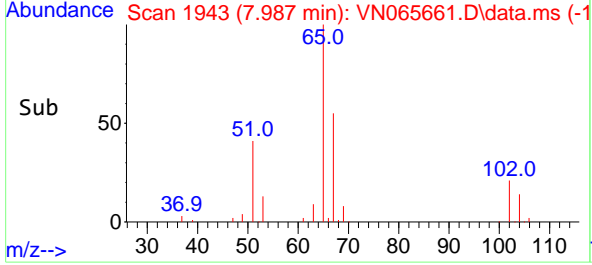
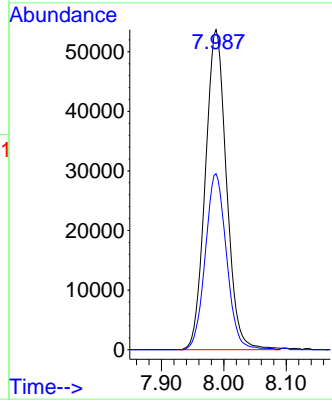
#33  
 1,2-Dichloroethane-d4  
 Concen: 48.32 ug/l  
 RT: 7.987 min Scan# 1943  
 Delta R.T. 0.000 min  
 Lab File: VN065661.D  
 Acq: 28 Jan 2021 19:56

**Instrument :**  
 MSVOA\_N  
**ClientSampled :**  
 CRT-5

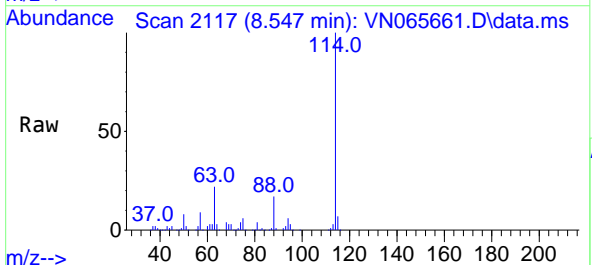


Tgt Ion: 65 Resp: 126579  
 Ion Ratio Lower Upper  
 65 100  
 67 55.2 0.0 107.2

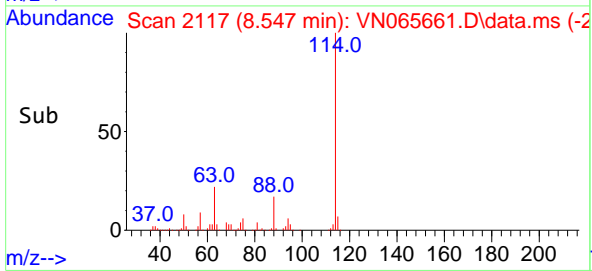
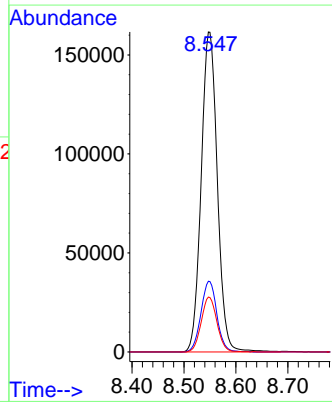
**Manual Integrations**  
**APPROVED**  
 MMDadoda  
 1/29/2021 12:00:14 PM

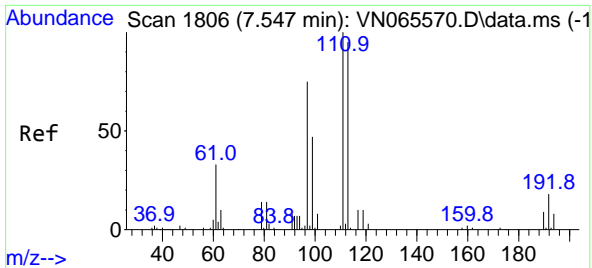


#34  
 1,4-Difluorobenzene  
 Concen: 50.00 ug/l  
 RT: 8.547 min Scan# 2117  
 Delta R.T. -0.003 min  
 Lab File: VN065661.D  
 Acq: 28 Jan 2021 19:56



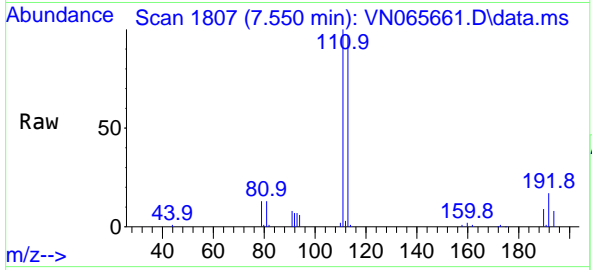
Tgt Ion: 114 Resp: 348173  
 Ion Ratio Lower Upper  
 114 100  
 63 22.1 0.0 38.6  
 88 17.1 0.0 30.6





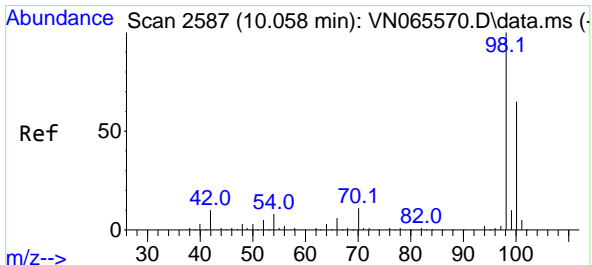
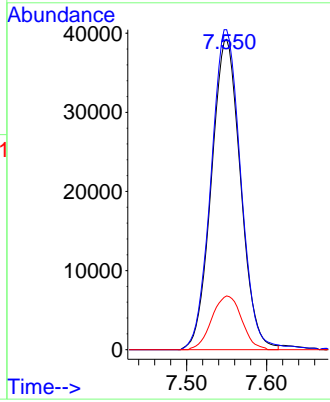
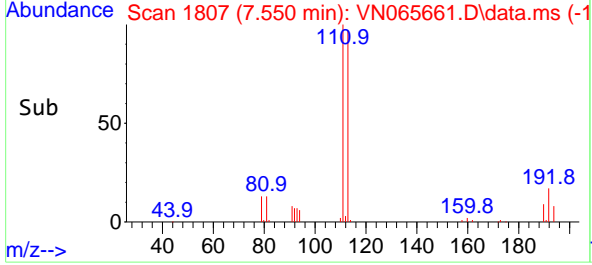
#35  
 Dibromofluoromethane  
 Concen: 48.07 ug/l  
 RT: 7.550 min Scan# 1807  
 Delta R.T. 0.003 min  
 Lab File: VN065661.D  
 Acq: 28 Jan 2021 19:56

**Instrument :**  
 MSVOA\_N  
**ClientSampled :**  
 CRT-5

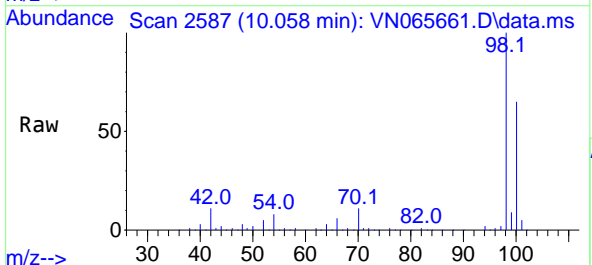


Tgt Ion:113 Resp: 99171  
 Ion Ratio Lower Upper  
 113 100  
 111 105.5 82.2 123.2  
 192 17.8 15.4 23.0

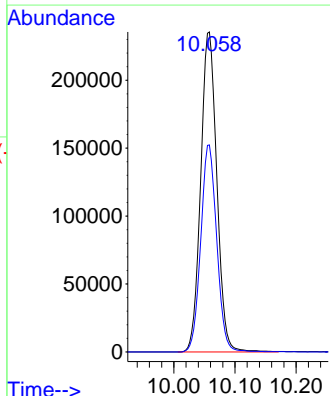
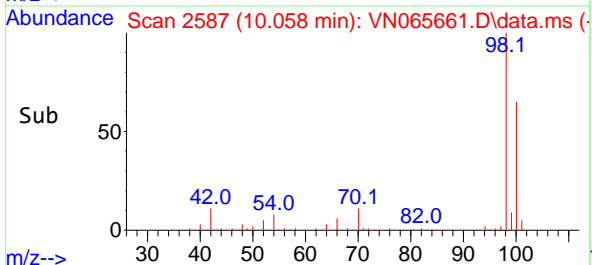
**Manual Integrations**  
**APPROVED**  
 MMDadoda  
 1/29/2021 12:00:14 PM

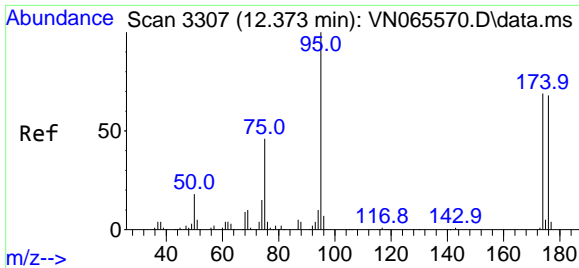


#50  
 Toluene-d8  
 Concen: 53.25 ug/l  
 RT: 10.058 min Scan# 2587  
 Delta R.T. 0.000 min  
 Lab File: VN065661.D  
 Acq: 28 Jan 2021 19:56



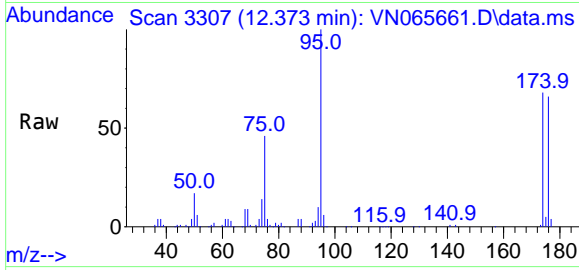
Tgt Ion: 98 Resp: 431833  
 Ion Ratio Lower Upper  
 98 100  
 100 64.2 50.5 75.7





#62  
 4-Bromofluorobenzene  
 Concen: 49.29 ug/l  
 RT: 12.373 min Scan# 3307  
 Delta R.T. 0.000 min  
 Lab File: VN065661.D  
 Acq: 28 Jan 2021 19:56

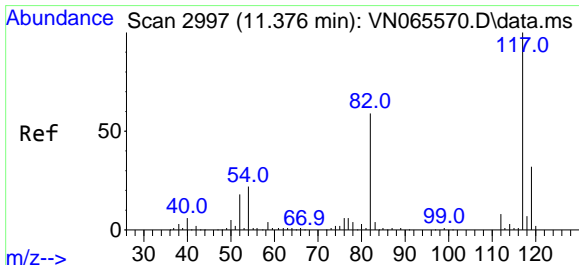
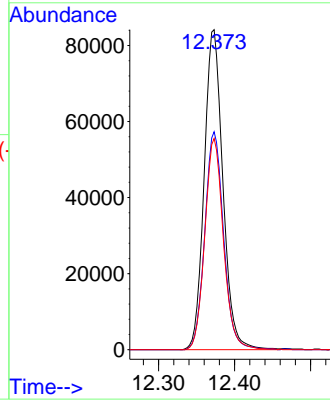
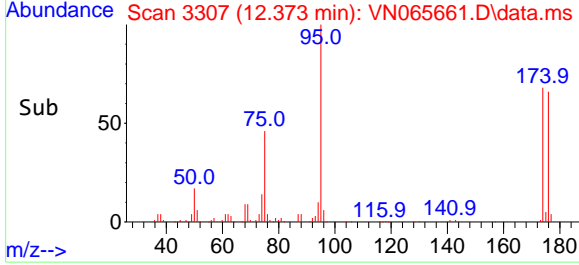
**Instrument :**  
 MSVOA\_N  
**ClientSampled :**  
 CRT-5



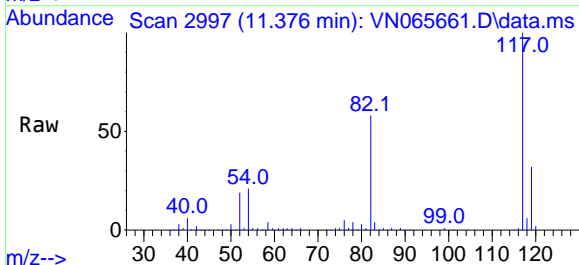
Tgt Ion: 95 Resp: 143950

Ion	Ratio	Lower	Upper
95	100		
174	68.4	0.0	169.0
176	65.8	0.0	162.4

**Manual Integrations**  
**APPROVED**  
 MMDadoda  
 1/29/2021 12:00:14 PM

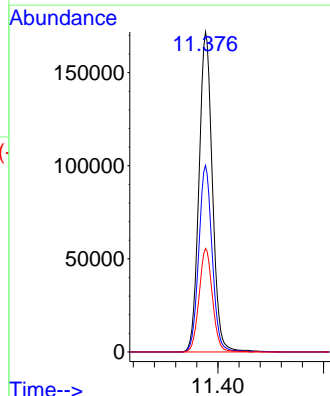
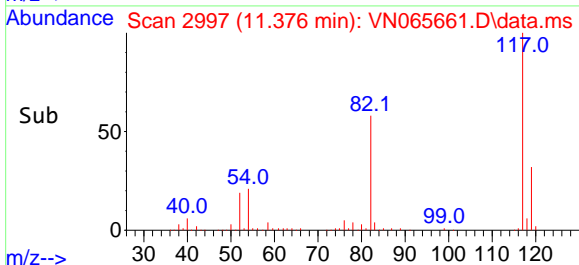


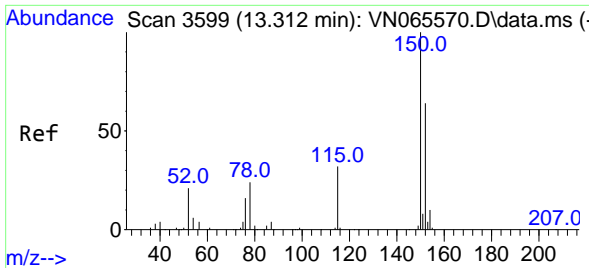
#63  
 Chlorobenzene-d5  
 Concen: 50.00 ug/l  
 RT: 11.376 min Scan# 2997  
 Delta R.T. 0.000 min  
 Lab File: VN065661.D  
 Acq: 28 Jan 2021 19:56



Tgt Ion: 117 Resp: 302498

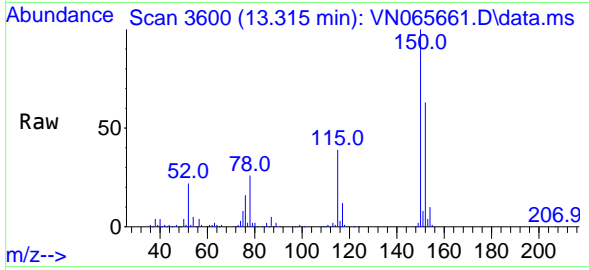
Ion	Ratio	Lower	Upper
117	100		
82	58.3	43.7	65.5
119	32.3	26.1	39.1





#72  
 1,4-Dichlorobenzene-d4  
 Concen: 50.00 ug/l  
 RT: 13.315 min Scan# 3600  
 Delta R.T. 0.003 min  
 Lab File: VN065661.D  
 Acq: 28 Jan 2021 19:56

**Instrument :**  
 MSVOA\_N  
**ClientSampled :**  
 CRT-5



Tgt Ion:152 Resp: 112341

Ion	Ratio	Lower	Upper
152	100		
115	62.4	28.5	85.6
150	160.1	0.0	347.6

**Manual Integrations**  
**APPROVED**  
 MMDadoda  
 1/29/2021 12:00:14 PM

