

Data Path : Z:\voasrv\HPCHEM1\MSVOA_N\Data\VN012825\
 Data File : VN085544.D
 Acq On : 28 Jan 2025 17:25
 Operator : JC\MD
 Sample : IBLK
 Misc : 5.0mL/MSVOA_N/WATER
 ALS Vial : 20 Sample Multiplier: 1

Instrument :
 MSVOA_N
 ClientSampleId :
 IBLK

Quant Time: Jan 29 00:42:12 2025
 Quant Method : Z:\voasrv\HPCHEM1\MSVOA_N\methods\82N011425W.M
 Quant Title : SW846 8260
 QLast Update : Wed Jan 15 02:16:08 2025
 Response via : Initial Calibration

| Compound | R.T. | QIon | Response | Conc | Units | Dev(Min) |
|-----------------------------|--------|----------------|----------|--------|----------|----------|
| ----- | | | | | | |
| Internal Standards | | | | | | |
| 1) Pentafluorobenzene | 8.224 | 168 | 155192 | 50.000 | ug/l | 0.00 |
| 34) 1,4-Difluorobenzene | 9.100 | 114 | 299855 | 50.000 | ug/l | 0.00 |
| 63) Chlorobenzene-d5 | 11.865 | 117 | 258483 | 50.000 | ug/l | 0.00 |
| 72) 1,4-Dichlorobenzene-d4 | 13.794 | 152 | 101113 | 50.000 | ug/l | 0.00 |
| System Monitoring Compounds | | | | | | |
| 33) 1,2-Dichloroethane-d4 | 8.577 | 65 | 147160 | 58.744 | ug/l | 0.00 |
| Spiked Amount | 50.000 | Range 74 - 125 | Recovery | = | 117.480% | |
| 35) Dibromofluoromethane | 8.165 | 113 | 109385 | 52.582 | ug/l | 0.00 |
| Spiked Amount | 50.000 | Range 75 - 124 | Recovery | = | 105.160% | |
| 50) Toluene-d8 | 10.565 | 98 | 356774 | 48.271 | ug/l | 0.00 |
| Spiked Amount | 50.000 | Range 86 - 113 | Recovery | = | 96.540% | |
| 62) 4-Bromofluorobenzene | 12.847 | 95 | 103641 | 40.992 | ug/l | 0.00 |
| Spiked Amount | 50.000 | Range 77 - 121 | Recovery | = | 81.980% | |

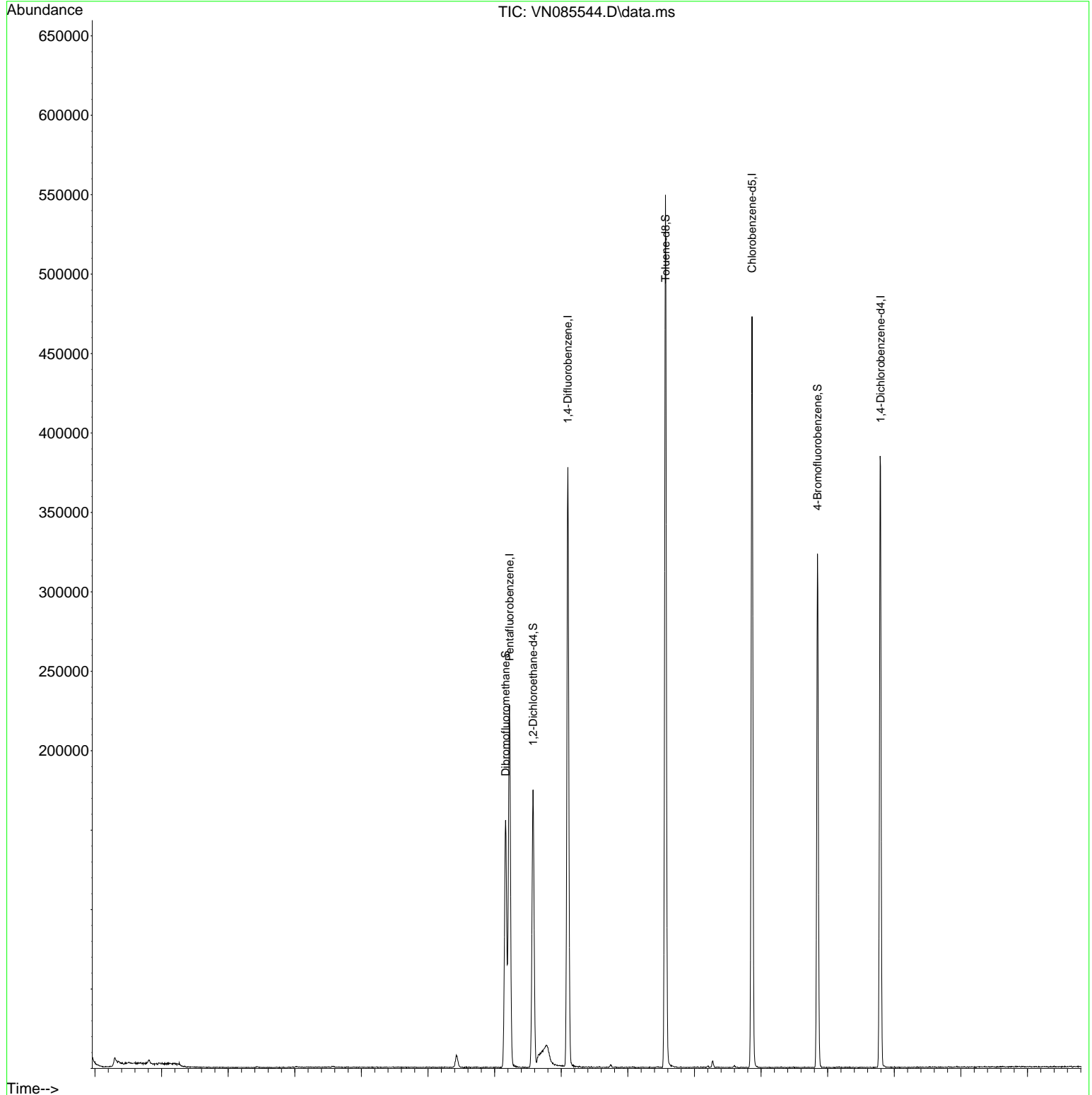
Target Compounds Qvalue

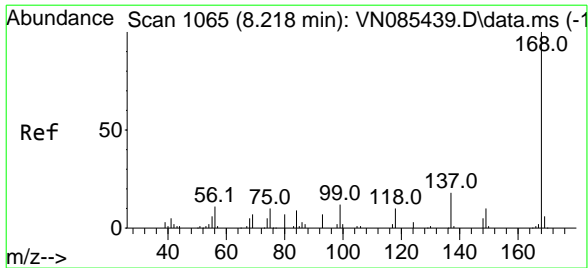
 (#) = qualifier out of range (m) = manual integration (+) = signals summed

Data Path : Z:\voasrv\HPCHEM1\MSVOA_N\Data\VN012825\
 Data File : VN085544.D
 Acq On : 28 Jan 2025 17:25
 Operator : JC\MD
 Sample : IBLK
 Misc : 5.0mL/MSVOA_N/WATER
 ALS Vial : 20 Sample Multiplier: 1

Instrument :
 MSVOA_N
 ClientSampleId :
 IBLK

Quant Time: Jan 29 00:42:12 2025
 Quant Method : Z:\voasrv\HPCHEM1\MSVOA_N\methods\82N011425W.M
 Quant Title : SW846 8260
 QLast Update : Wed Jan 15 02:16:08 2025
 Response via : Initial Calibration

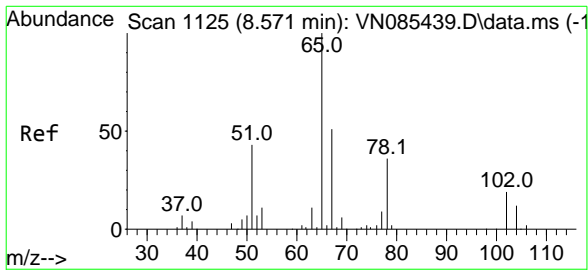
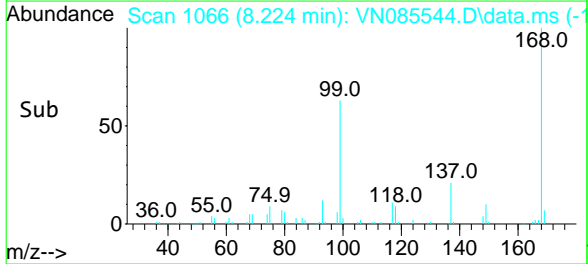
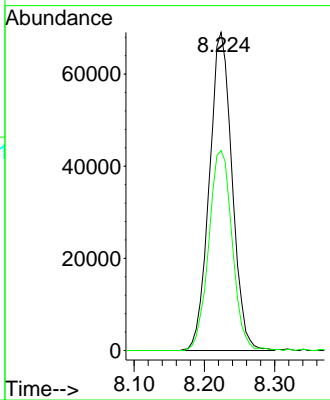
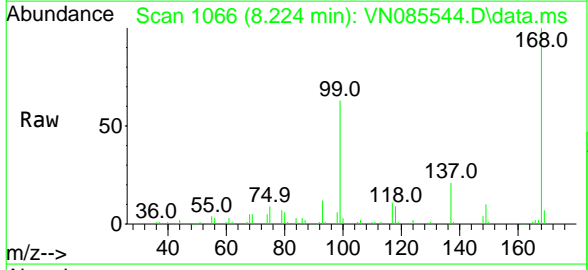




#1
 Pentafluorobenzene
 Concen: 50.000 ug/l
 RT: 8.224 min Scan# 1066
 Delta R.T. 0.006 min
 Lab File: VN085544.D
 Acq: 28 Jan 2025 17:25

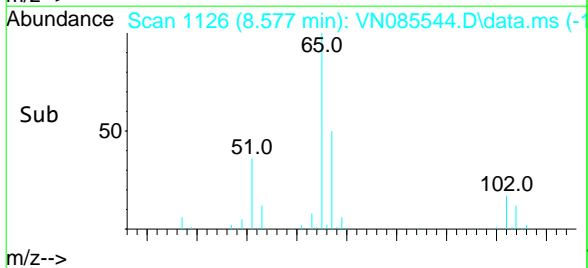
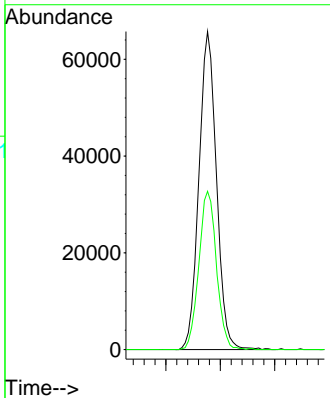
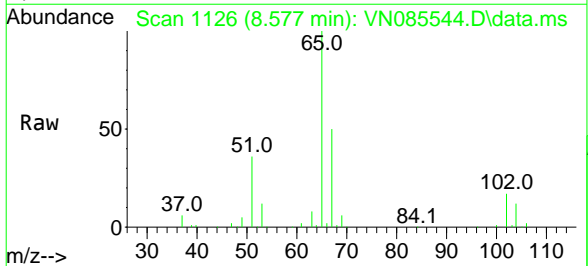
Instrument : MSVOA_N
 ClientSampleId : IBLK

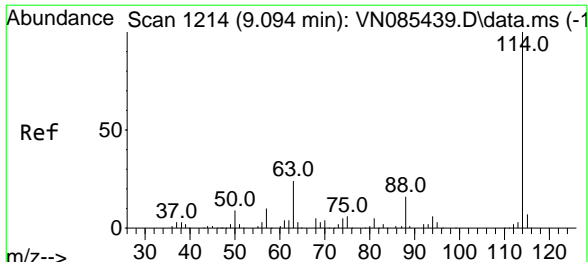
Tgt Ion: 168 Resp: 155192
 Ion Ratio Lower Upper
 168 100
 99 62.9 53.6 80.4



#33
 1,2-Dichloroethane-d4
 Concen: 58.744 ug/l
 RT: 8.577 min Scan# 1126
 Delta R.T. 0.006 min
 Lab File: VN085544.D
 Acq: 28 Jan 2025 17:25

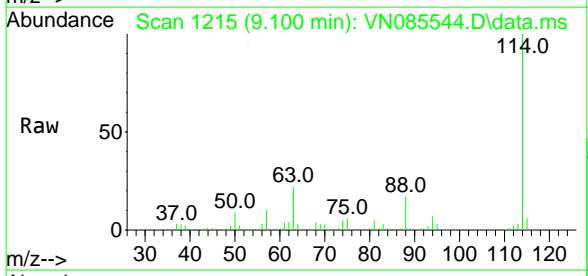
Tgt Ion: 65 Resp: 147160
 Ion Ratio Lower Upper
 65 100
 67 49.9 0.0 101.6



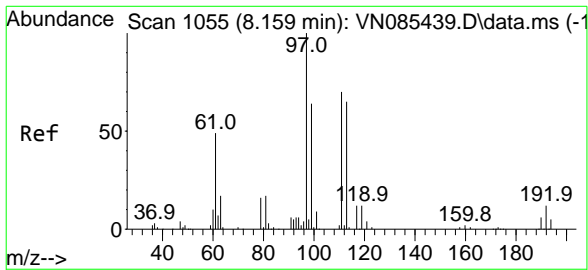
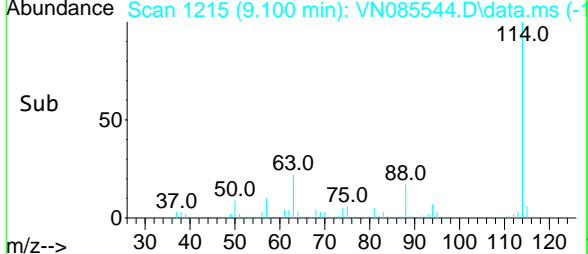
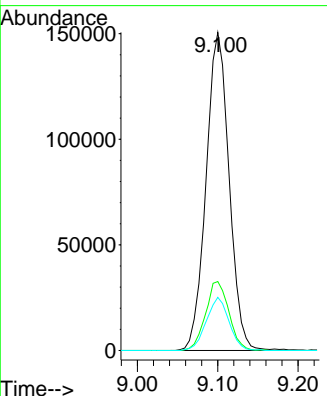


#34
 1,4-Difluorobenzene
 Concen: 50.000 ug/l
 RT: 9.100 min Scan# 1214
 Delta R.T. 0.006 min
 Lab File: VN085544.D
 Acq: 28 Jan 2025 17:25

Instrument : MSVOA_N
 ClientSampleId : IBLK

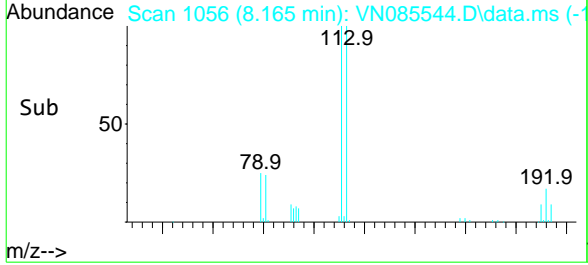
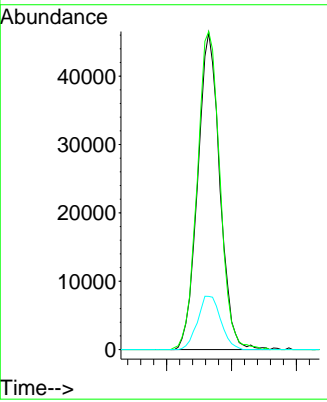
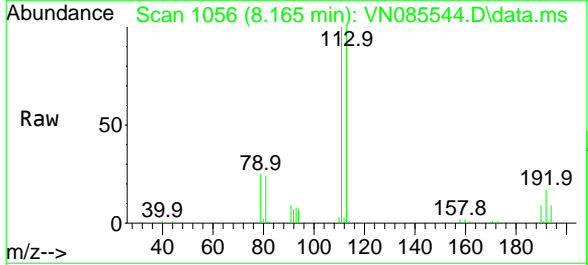


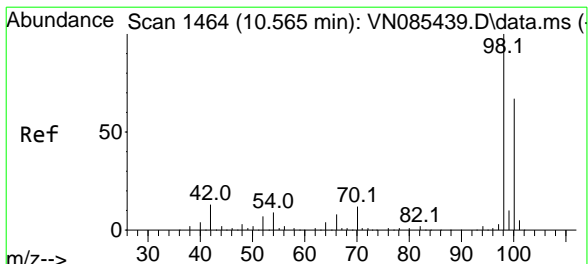
| Tgt Ion | Resp | Lower | Upper |
|---------|------|-------|-------|
| 114 | 100 | | |
| 63 | 21.7 | 0.0 | 47.6 |
| 88 | 16.7 | 0.0 | 32.6 |



#35
 Dibromofluoromethane
 Concen: 52.582 ug/l
 RT: 8.165 min Scan# 1056
 Delta R.T. 0.006 min
 Lab File: VN085544.D
 Acq: 28 Jan 2025 17:25

| Tgt Ion | Resp | Lower | Upper |
|---------|-------|-------|-------|
| 113 | 100 | | |
| 111 | 103.1 | 82.7 | 124.1 |
| 192 | 17.7 | 14.3 | 21.5 |

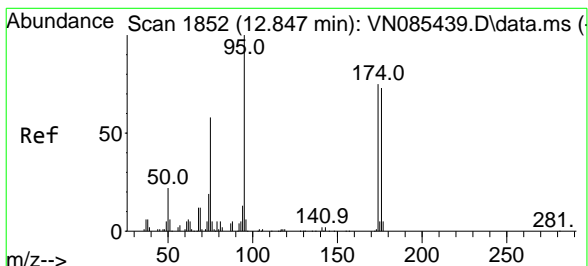
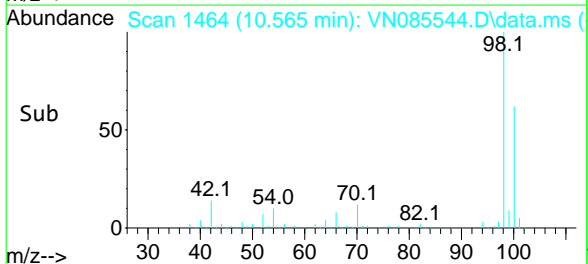
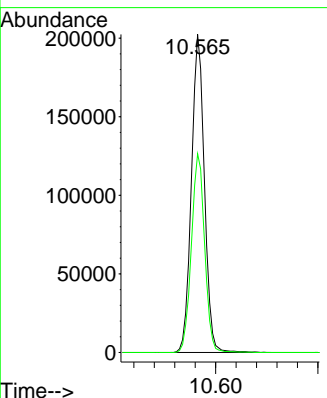
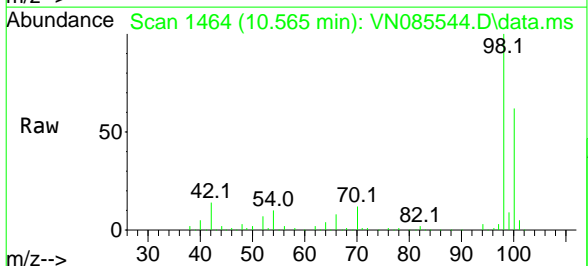




#50
 Toluene-d8
 Concen: 48.271 ug/l
 RT: 10.565 min Scan# 14
 Delta R.T. -0.000 min
 Lab File: VN085544.D
 Acq: 28 Jan 2025 17:25

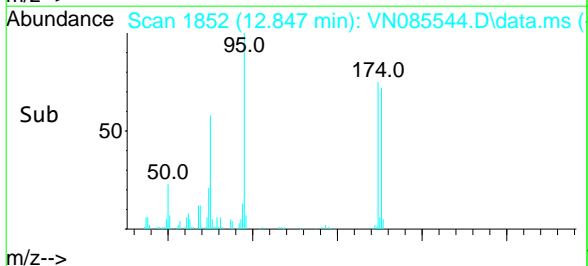
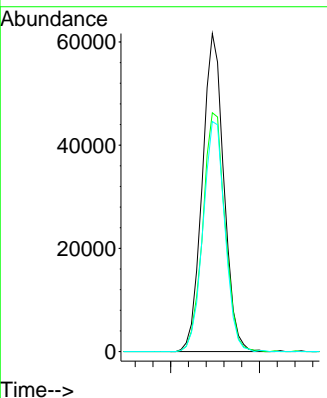
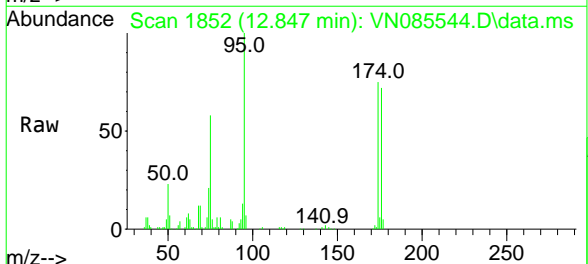
Instrument :
 MSVOA_N
 ClientSampleId :
 IBLK

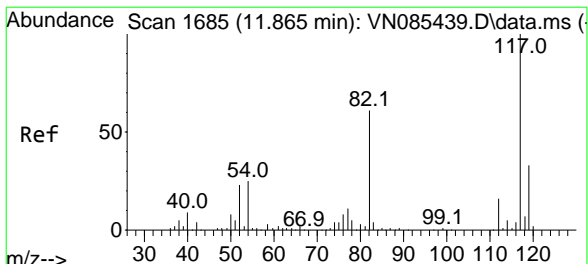
Tgt Ion: 98 Resp: 356774
 Ion Ratio Lower Upper
 98 100
 100 63.7 52.2 78.4



#62
 4-Bromofluorobenzene
 Concen: 40.992 ug/l
 RT: 12.847 min Scan# 1852
 Delta R.T. -0.000 min
 Lab File: VN085544.D
 Acq: 28 Jan 2025 17:25

Tgt Ion: 95 Resp: 103641
 Ion Ratio Lower Upper
 95 100
 174 77.4 0.0 145.0
 176 73.6 0.0 142.4

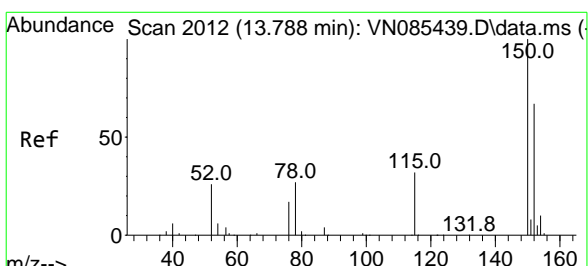
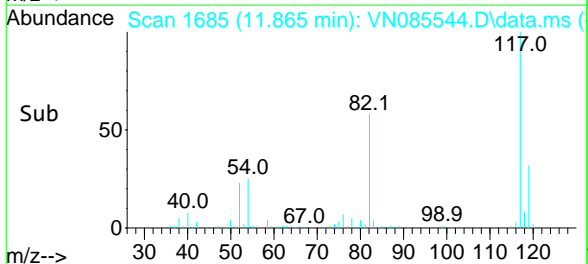
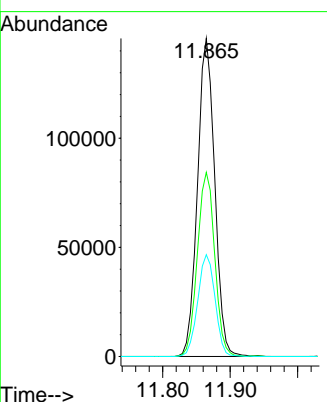
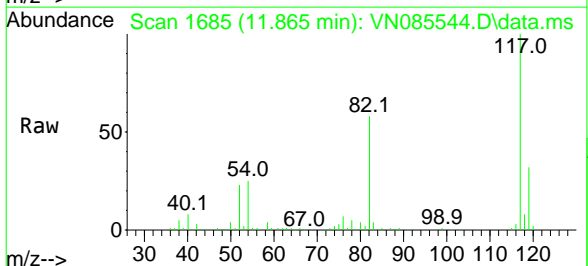




#63
 Chlorobenzene-d5
 Concen: 50.000 ug/l
 RT: 11.865 min Scan# 16
 Delta R.T. -0.000 min
 Lab File: VN085544.D
 Acq: 28 Jan 2025 17:25

Instrument : MSVOA_N
 ClientSampleId : IBLK

| Tgt Ion | Resp | Lower | Upper |
|---------|------|-------|-------|
| 117 | 100 | | |
| 82 | 57.9 | 48.6 | 72.8 |
| 119 | 32.0 | 26.6 | 39.8 |



#72
 1,4-Dichlorobenzene-d4
 Concen: 50.000 ug/l
 RT: 13.794 min Scan# 2013
 Delta R.T. 0.006 min
 Lab File: VN085544.D
 Acq: 28 Jan 2025 17:25

| Tgt Ion | Resp | Lower | Upper |
|---------|-------|-------|-------|
| 152 | 100 | | |
| 115 | 61.8 | 31.1 | 93.3 |
| 150 | 157.4 | 0.0 | 343.6 |

