

Data Path : Z:\VOASRV\HPCHEM1\MSVOA N\DATA\VN012920\
 Data File : VN059908.D
 Acq On : 29 Jan 2020 13:37
 Operator : JC/MD
 Sample : L1287-06
 Misc : 5.00mL/MSVOA N/WATER
 ALS Vial : 10 Sample Multiplier: 1

Instrument :
 MSVOA_N
ClientSampleId :
 AOC-3-EXC-PIT-(0-5)-B

Quant Time: Jan 30 00:52:17 2020
 Quant Method : Z:\VOASRV\HPCHEM1\MSVOA_N\METHODS\82N011320W.M
 Quant Title : SW846 8260
 QLast Update : Sat Jan 18 03:09:32 2020
 Response via : Initial Calibration

Internal Standards	R.T.	QIon	Response	Conc	Units	Dev(Min)
1) Pentafluorobenzene	7.64	168	204805	50.00	ug/l	0.00
34) 1,4-Difluorobenzene	8.57	114	308073	50.00	ug/l	0.00
63) Chlorobenzene-d5	11.40	117	270644	50.00	ug/l	0.00
72) 1,4-Dichlorobenzene-d4	13.34	152	115571	50.00	ug/l	0.00

System Monitoring Compounds

33) 1,2-Dichloroethane-d4	8.00	65	107783	47.39	ug/l	0.00
Spiked Amount				50.000		
			Recovery	=	94.78%	
35) Dibromofluoromethane	7.57	113	92259	50.22	ug/l	0.00
Spiked Amount				50.000		
			Recovery	=	100.44%	
50) Toluene-d8	10.08	98	361450	50.78	ug/l	0.00
Spiked Amount				50.000		
			Recovery	=	101.56%	
62) 4-Bromofluorobenzene	12.40	95	119223	46.46	ug/l	0.00
Spiked Amount				50.000		
			Recovery	=	92.92%	

Target Compounds

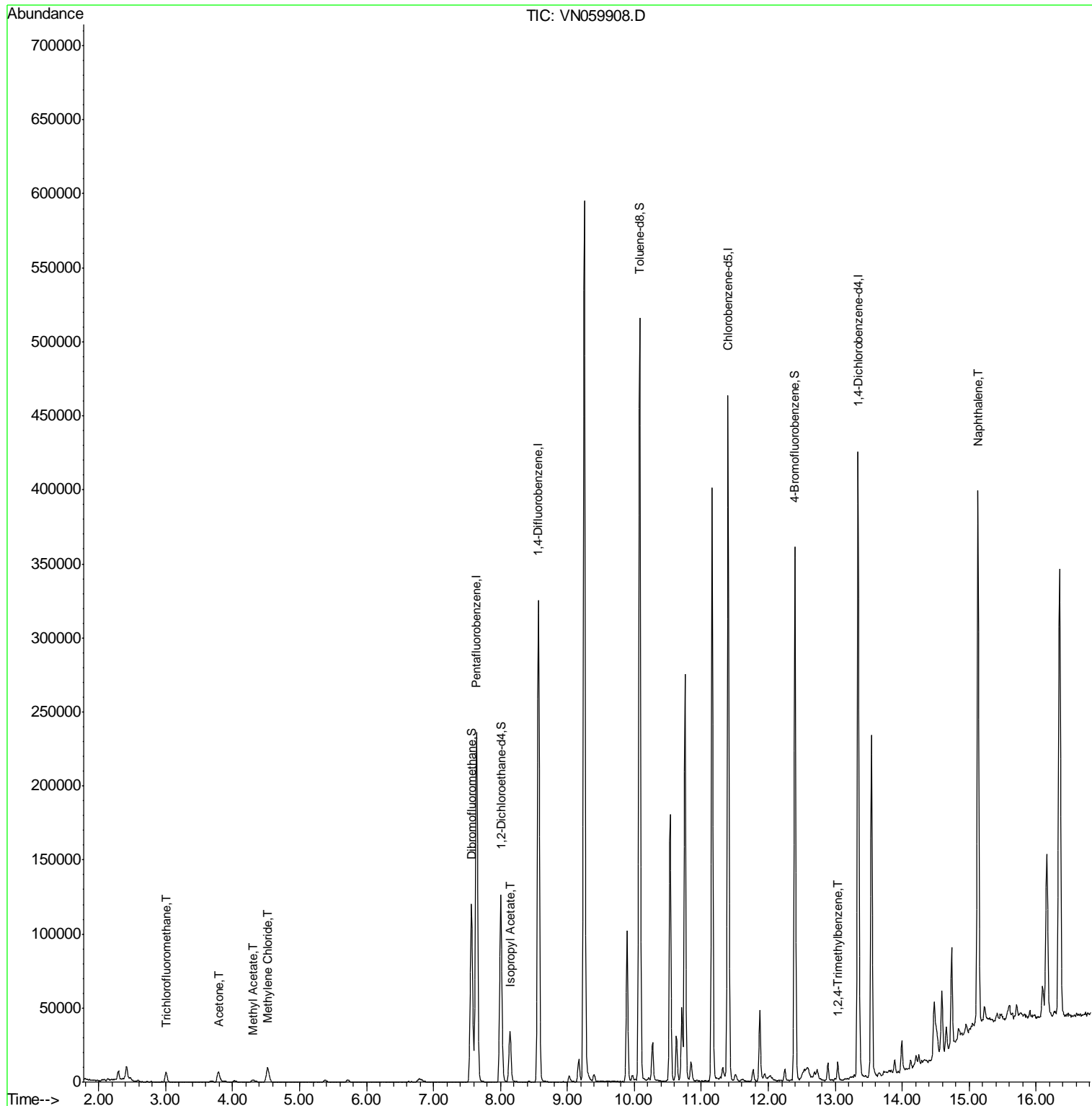
					Qvalue
7) Trichlorofluoromethane	3.00	101	6771	2.102	ug/l 90
16) Acetone	3.79	43	12178	5.925	ug/l 99
18) Methyl Acetate	4.30	43	2671	1.005	ug/l 96
20) Methylene Chloride	4.52	84	7676	2.501	ug/l 84
43) Isopropyl Acetate	8.14	43	40112	9.268	ug/l # 91
84) 1,2,4-Trimethylbenzene	13.04	105	7686	1.090	ug/l 100
95) Naphthalene	15.13	128	316795	50.286	ug/l 100

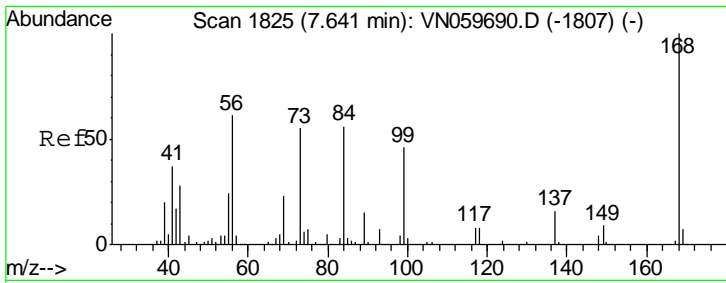
(#) = qualifier out of range (m) = manual integration (+) = signals summed

Data Path : Z:\VOASRV\HPCHEM1\MSVOA N\DATA\VN012920\
 Data File : VN059908.D
 Acq On : 29 Jan 2020 13:37
 Operator : JC/MD
 Sample : L1287-06
 Misc : 5.00mL/MSVOA N/WATER
 ALS Vial : 10 Sample Multiplier: 1

Instrument :
 MSVOA_N
Client Sampled :
 AOC-3-EXC-PIT-(0-5)-B

Quant Time: Jan 30 00:52:17 2020
 Quant Method : Z:\VOASRV\HPCHEM1\MSVOA_N\METHODS\82N011320W.M
 Quant Title : SW846 8260
 QLast Update : Sat Jan 18 03:09:32 2020
 Response via : Initial Calibration

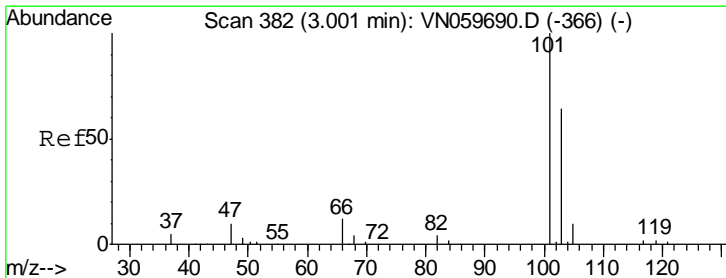
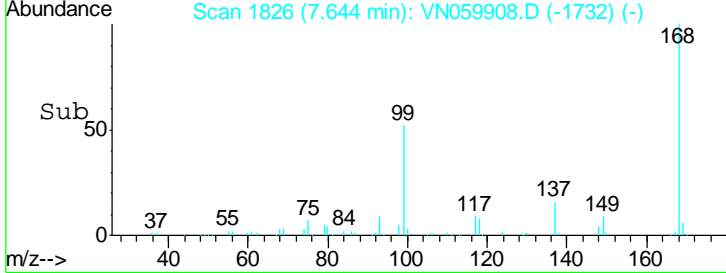
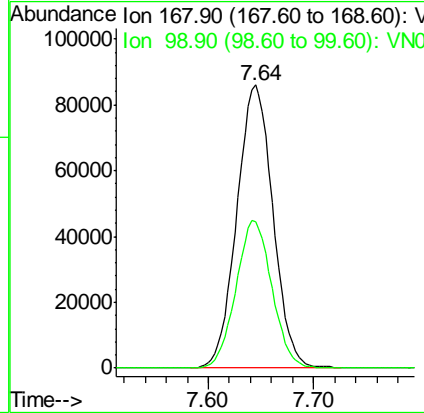
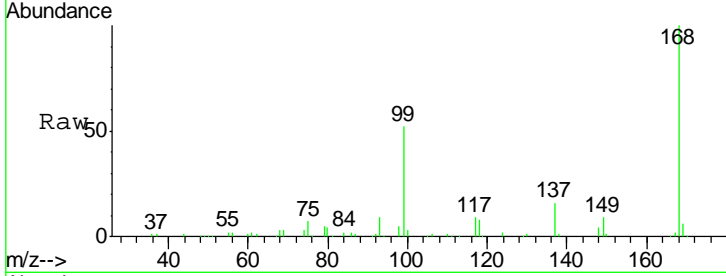




#1
 Pentafluorobenzene
 Concen: 50.000 ug/l
 RT: 7.64 min Scan# 1826
 Delta R.T. 0.00 min
 Lab File: VN059908.D
 Acq: 29 Jan 2020 13:37

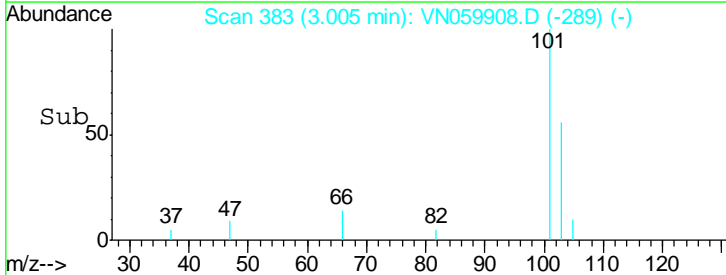
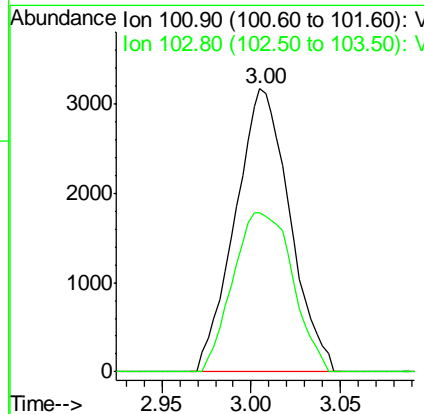
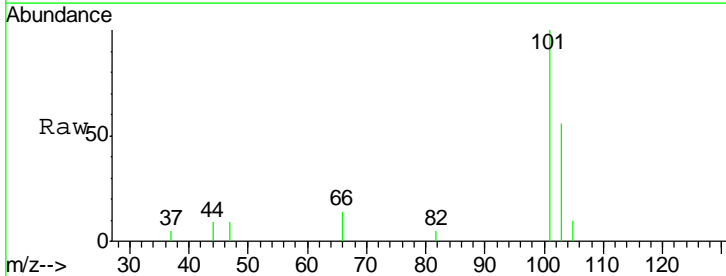
Instrument :
 MSVOA_N
ClientSampled :
 AOC-3-EXC-PIT-(0-5)-B

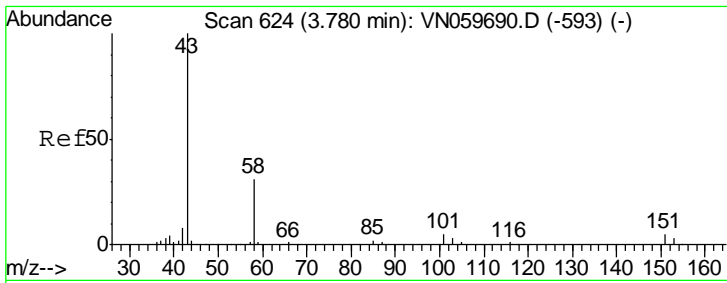
Tgt Ion:168 Resp: 204805
 Ion Ratio Lower Upper
 168 100
 99 51.8 48.2 72.4



#7
 Trichlorofluoromethane
 Concen: 2.102 ug/l
 RT: 3.00 min Scan# 383
 Delta R.T. 0.00 min
 Lab File: VN059908.D
 Acq: 29 Jan 2020 13:37

Tgt Ion:101 Resp: 6771
 Ion Ratio Lower Upper
 101 100
 103 56.3 51.0 76.6

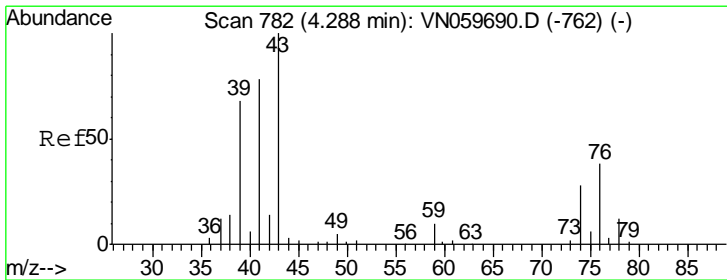
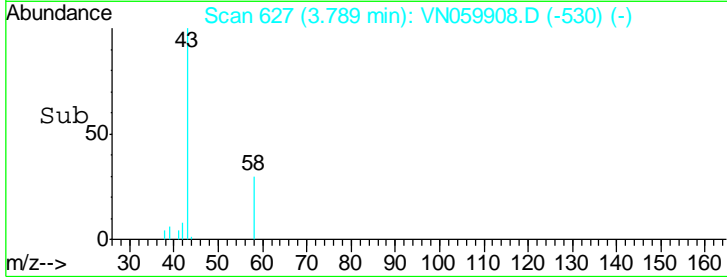
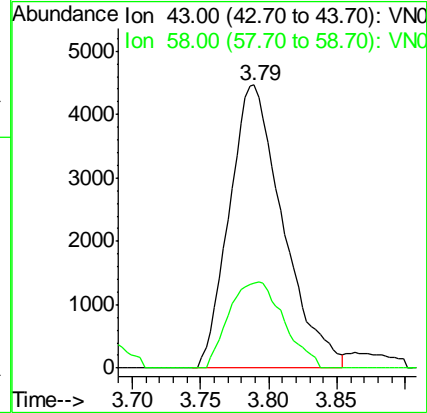
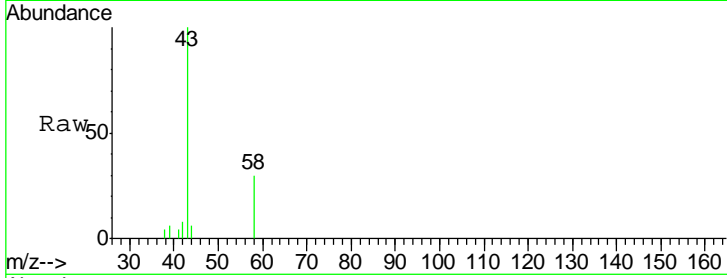




#16
 Acetone
 Concen: 5.925 ug/l
 RT: 3.79 min Scan# 627
 Delta R.T. 0.01 min
 Lab File: VN059908.D
 Acq: 29 Jan 2020 13:37

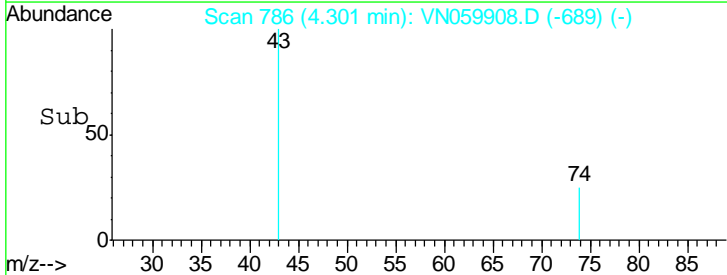
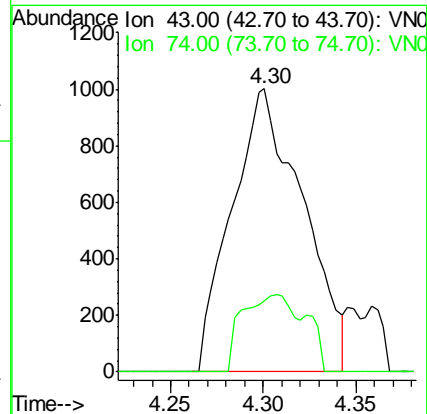
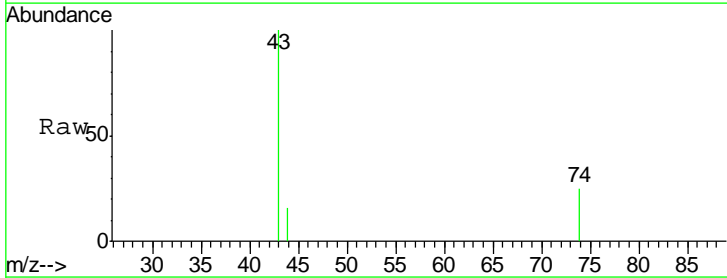
Instrument :
 MSVOA_N
 ClientSampleId :
 AOC-3-EXC-PIT-(0-5)-B

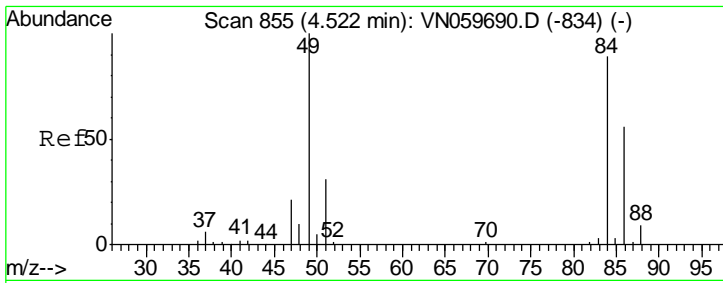
Tgt Ion	Resp	Lower	Upper
43	12178		
58	30.1	23.6	35.4



#18
 Methyl Acetate
 Concen: 1.005 ug/l
 RT: 4.30 min Scan# 786
 Delta R.T. 0.01 min
 Lab File: VN059908.D
 Acq: 29 Jan 2020 13:37

Tgt Ion	Resp	Lower	Upper
43	2671		
74	20.0	17.5	26.3

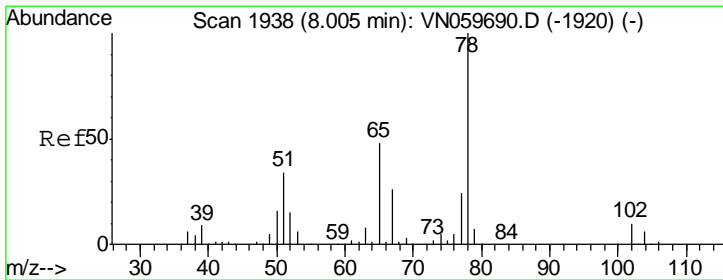
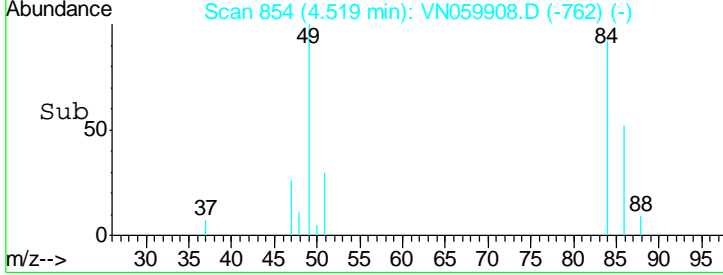
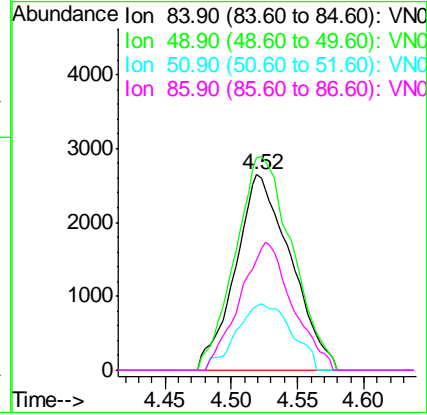
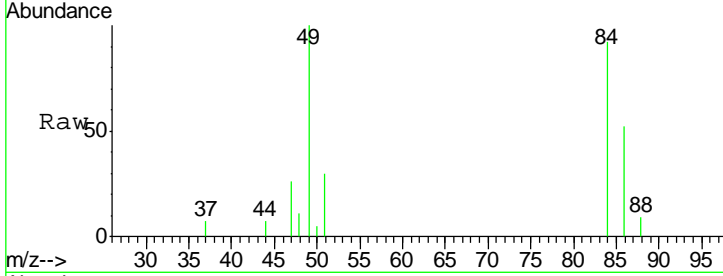




#20
Methylene Chloride
Concen: 2.501 ug/l
RT: 4.52 min Scan# 854
Delta R.T. -0.00 min
Lab File: VN059908.D
Acq: 29 Jan 2020 13:37

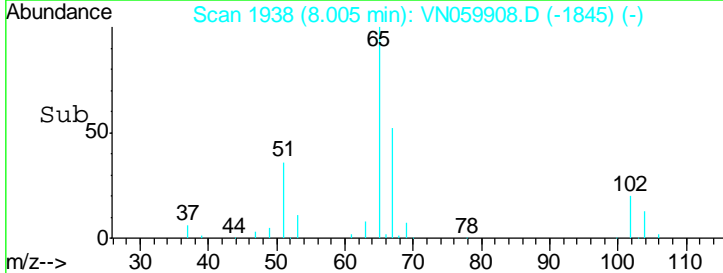
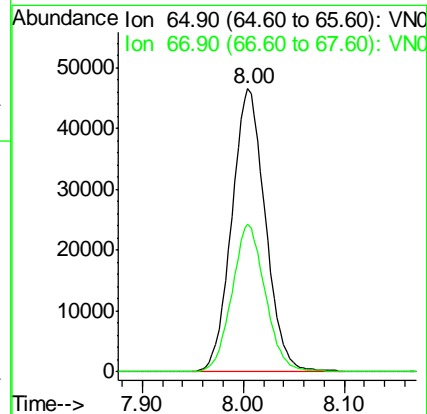
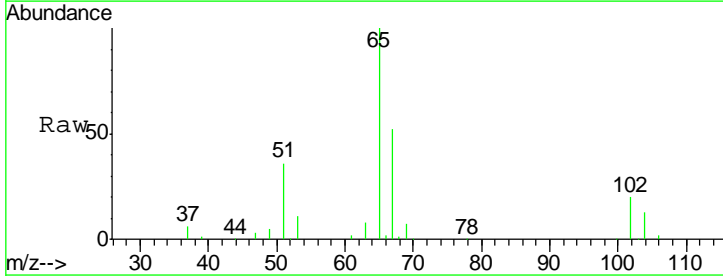
Instrument :
MSVOA_N
ClientSampled :
AOC-3-EXC-PIT-(0-5)-B

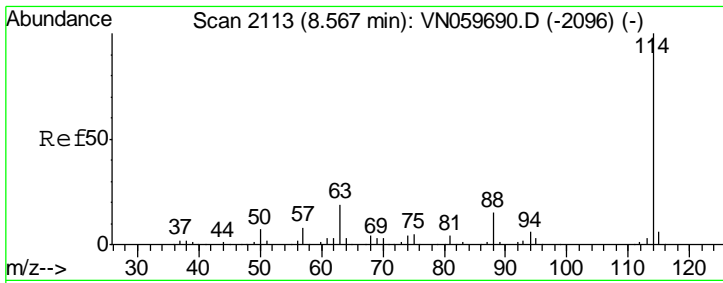
Tgt Ion	Resp	Lower	Upper
84	100		
49	108.6	106.6	160.0
51	32.9	31.9	47.9
86	56.2	50.8	76.2



#33
1,2-Dichloroethane-d4
Concen: 47.389 ug/l
RT: 8.00 min Scan# 1938
Delta R.T. 0.00 min
Lab File: VN059908.D
Acq: 29 Jan 2020 13:37

Tgt Ion	Resp	Lower	Upper
65	100		
67	51.8	0.0	103.0

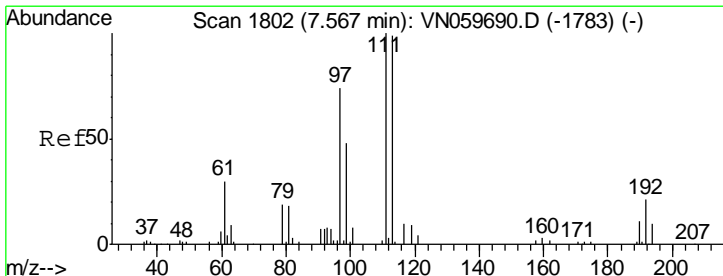
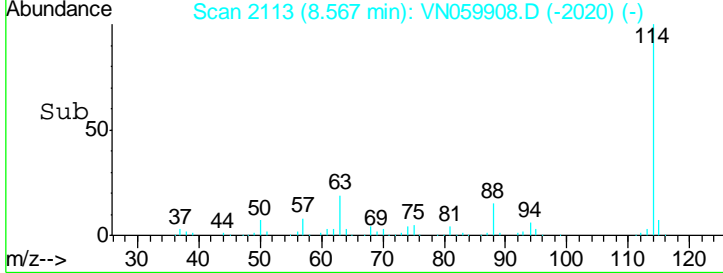
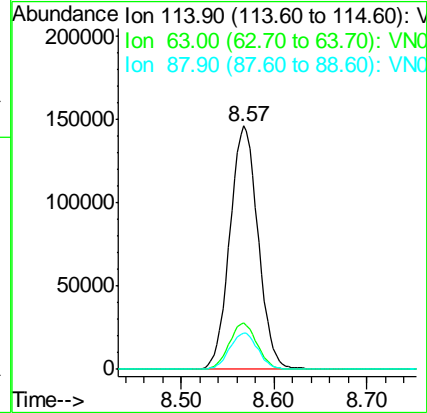
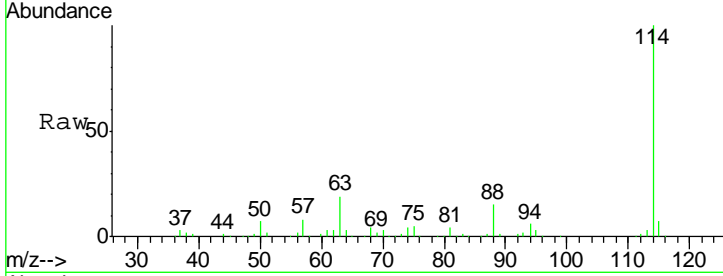




#34
 1,4-Difluorobenzene
 Concen: 50.000 ug/l
 RT: 8.57 min Scan# 2113
 Delta R.T. 0.00 min
 Lab File: VN059908.D
 Acq: 29 Jan 2020 13:37

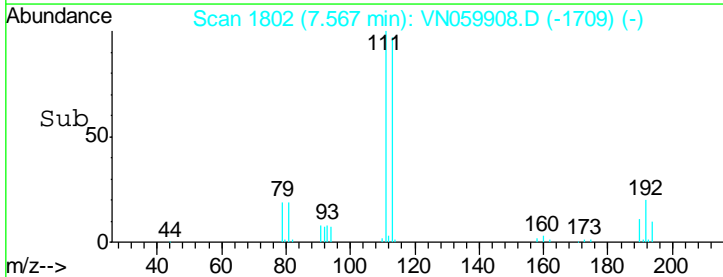
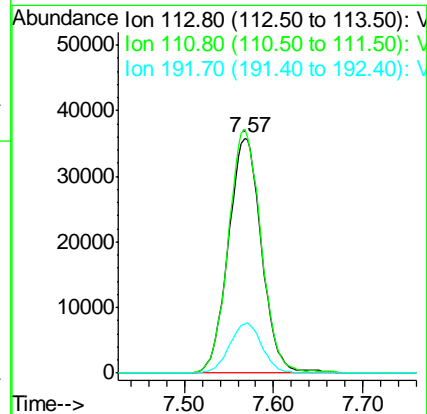
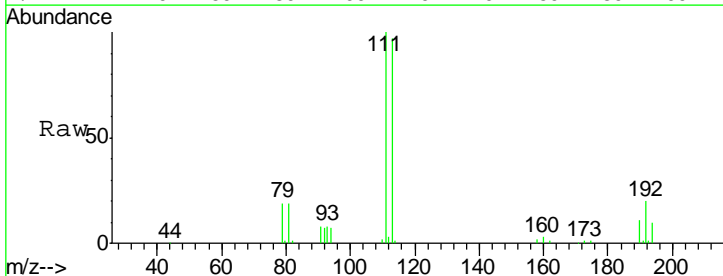
Instrument :
 MSVOA_N
 ClientSampled :
 AOC-3-EXC-PIT-(0-5)-B

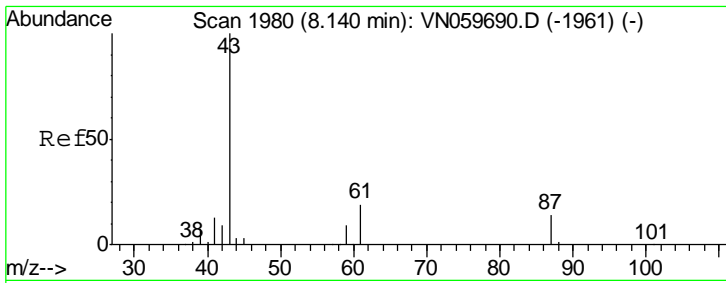
Tgt Ion	Resp	Lower	Upper
114	308073		
63	19.0	0.0	43.6
88	15.0	0.0	31.4



#35
 Dibromofluoromethane
 Concen: 50.218 ug/l
 RT: 7.57 min Scan# 1802
 Delta R.T. 0.00 min
 Lab File: VN059908.D
 Acq: 29 Jan 2020 13:37

Tgt Ion	Resp	Lower	Upper
113	92259		
111	101.9	83.5	125.3
192	20.6	15.4	23.2

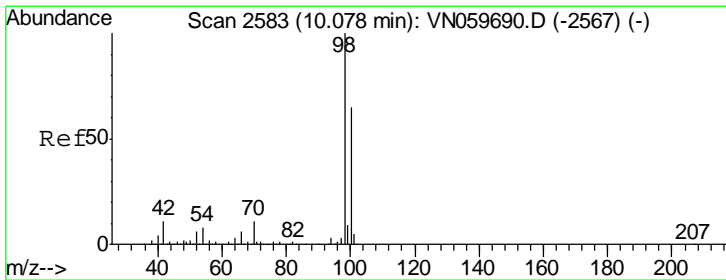
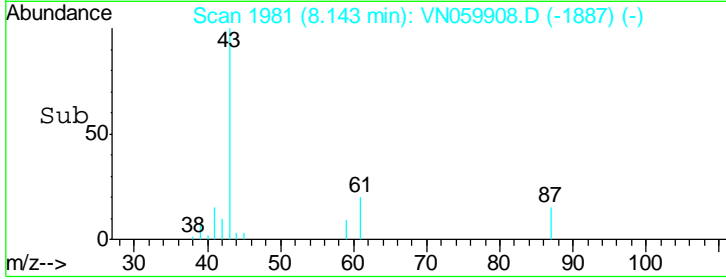
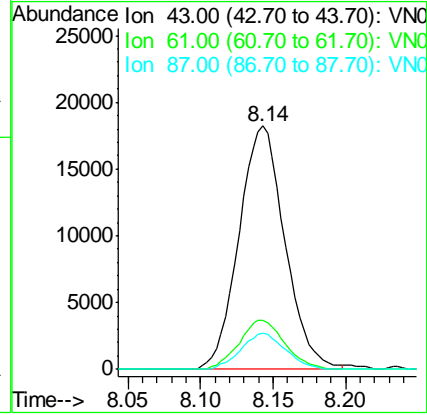
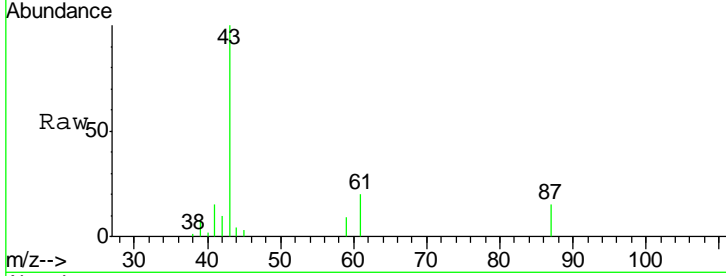




#43
 Isopropyl Acetate
 Concen: 9.268 ug/l
 RT: 8.14 min Scan# 1981
 Delta R.T. 0.00 min
 Lab File: VN059908.D
 Acq: 29 Jan 2020 13:37

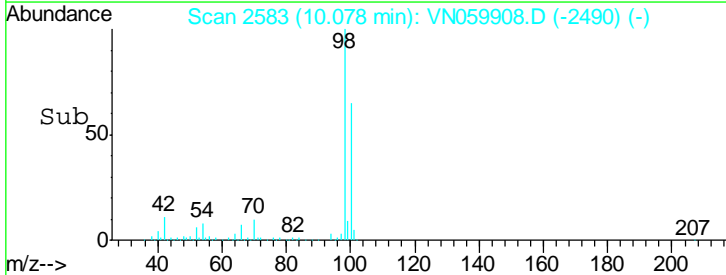
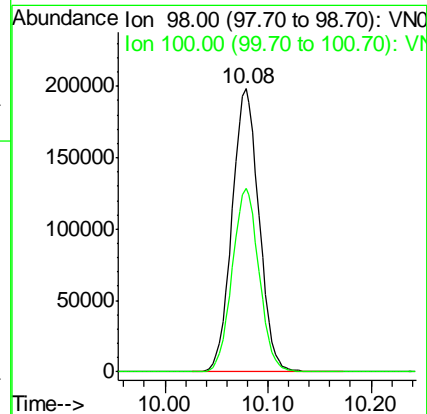
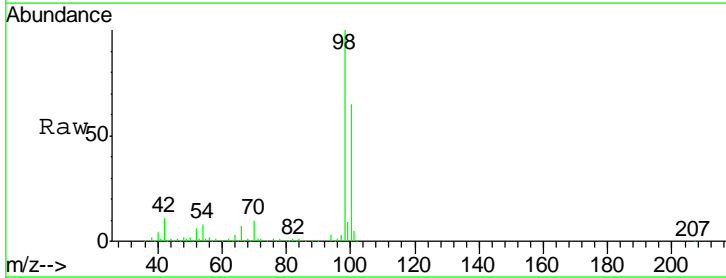
Instrument :
 MSVOA_N
 ClientSampled :
 AOC-3-EXC-PIT-(0-5)-B

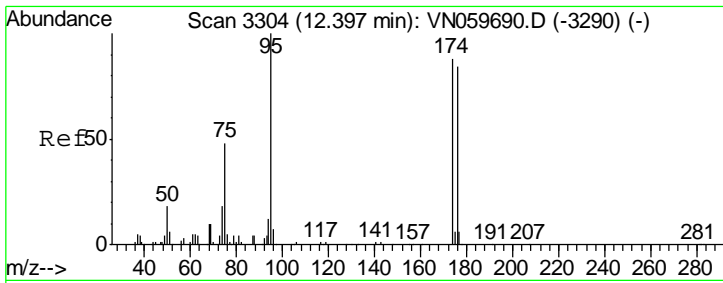
Tgt Ion	Resp	Lower	Upper
43	40112		
61	20.0	20.2	30.2#
87	14.4	9.5	14.3#



#50
 Toluene-d8
 Concen: 50.779 ug/l
 RT: 10.08 min Scan# 2583
 Delta R.T. 0.00 min
 Lab File: VN059908.D
 Acq: 29 Jan 2020 13:37

Tgt Ion	Resp	Lower	Upper
98	361450		
100	64.6	51.2	76.8

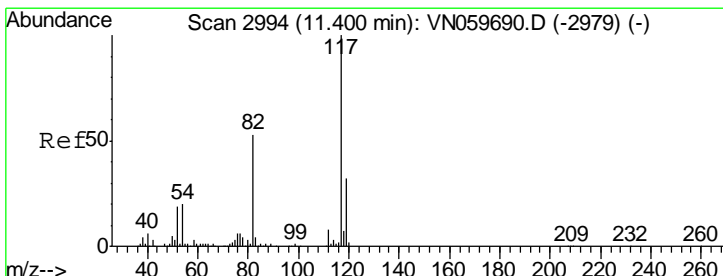
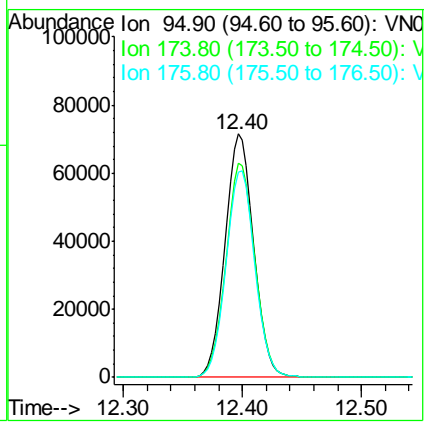
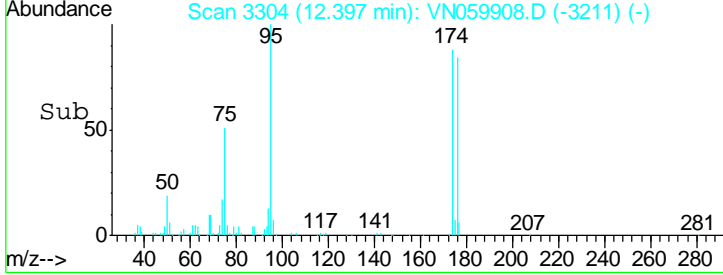
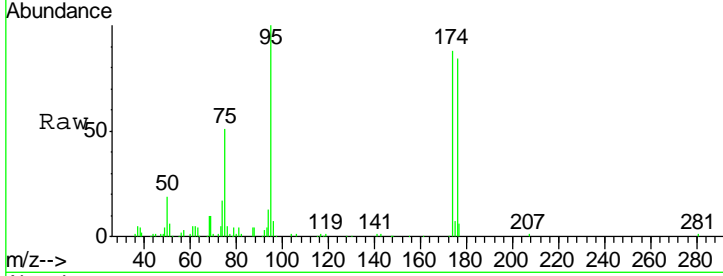




#62
 4-Bromofluorobenzene
 Concen: 46.461 ug/l
 RT: 12.40 min Scan# 3304
 Delta R.T. 0.00 min
 Lab File: VN059908.D
 Acq: 29 Jan 2020 13:37

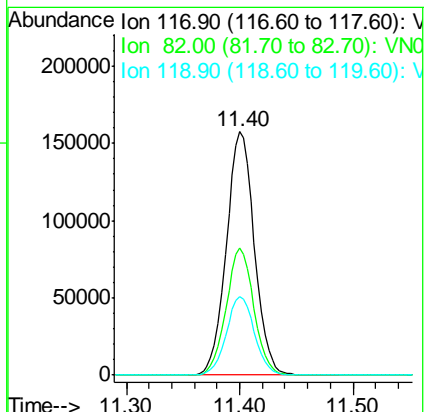
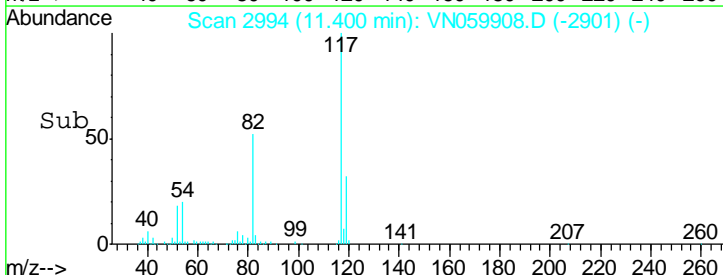
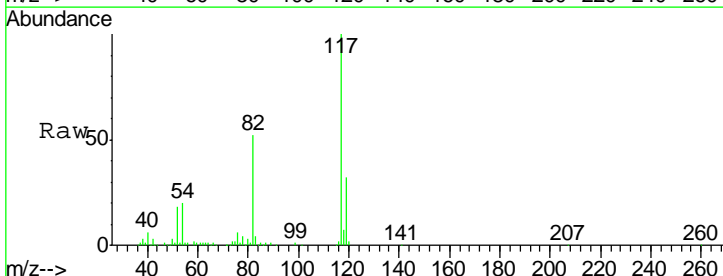
Instrument : MSVOA_N
 ClientSampled : AOC-3-EXC-PIT-(0-5)-B

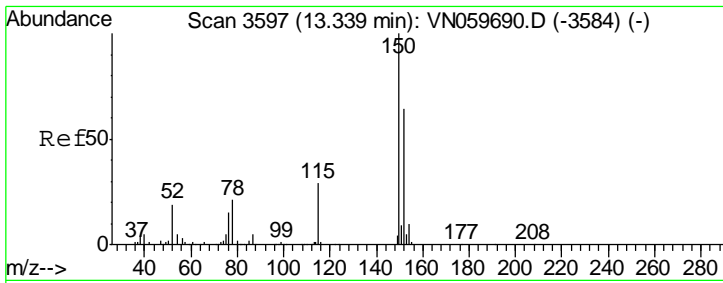
Tgt Ion	Resp	Lower	Upper
95	119223		
174	88.9	0.0	151.4
176	85.3	0.0	146.0



#63
 Chlorobenzene-d5
 Concen: 50.000 ug/l
 RT: 11.40 min Scan# 2994
 Delta R.T. 0.00 min
 Lab File: VN059908.D
 Acq: 29 Jan 2020 13:37

Tgt Ion	Resp	Lower	Upper
117	270644		
82	52.2	45.9	68.9
119	32.1	25.5	38.3

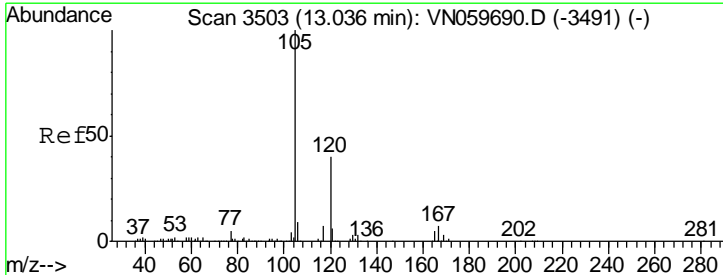
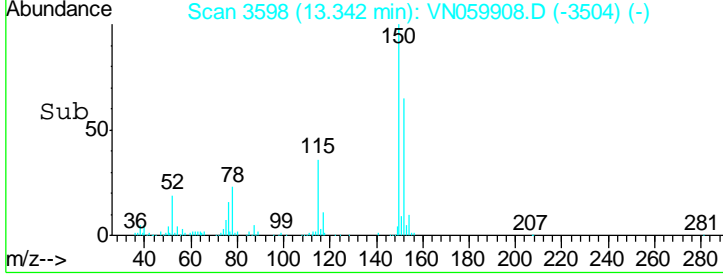
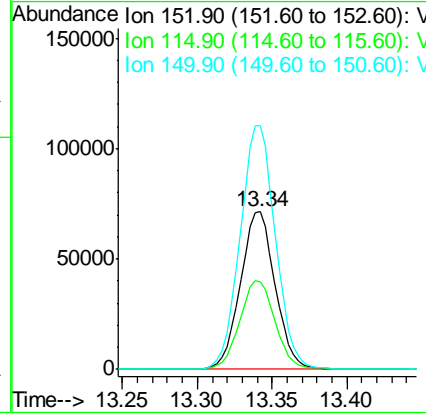
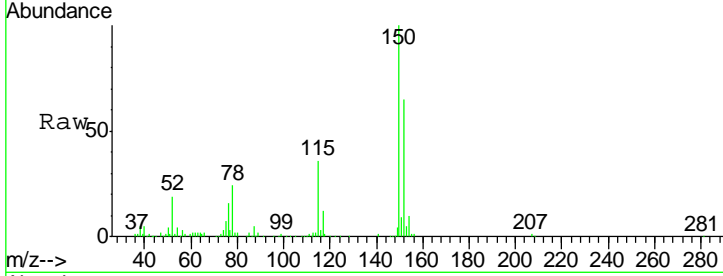




#72
 1,4-Dichlorobenzene-d4
 Concen: 50.000 ug/l
 RT: 13.34 min Scan# 3598
 Delta R.T. 0.00 min
 Lab File: VN059908.D
 Acq: 29 Jan 2020 13:37

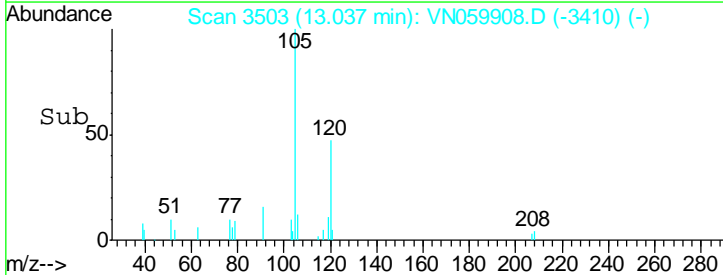
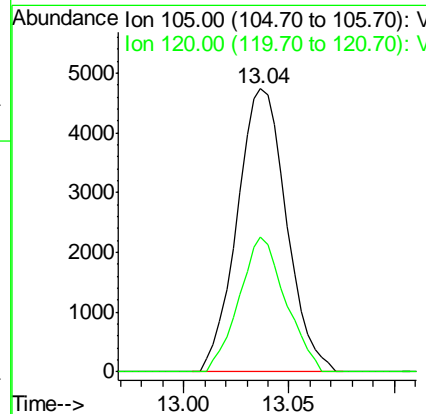
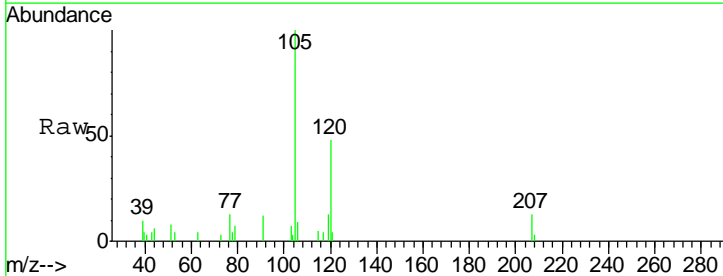
Instrument : MSVOA_N
 ClientSampled : AOC-3-EXC-PIT-(0-5)-B

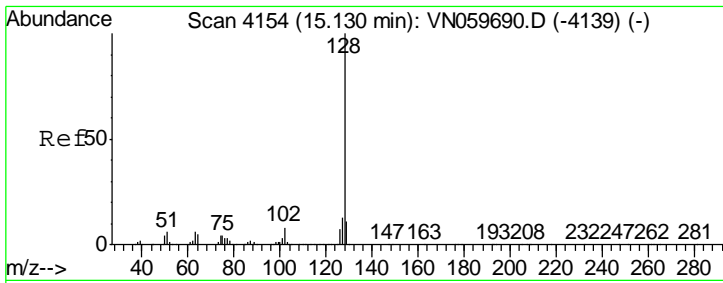
Tgt Ion	Resp	Lower	Upper
152	11571		
152	100		
115	56.7	30.3	90.9
150	157.2	0.0	345.2



#84
 1,2,4-Trimethylbenzene
 Concen: 1.090 ug/l
 RT: 13.04 min Scan# 3503
 Delta R.T. 0.00 min
 Lab File: VN059908.D
 Acq: 29 Jan 2020 13:37

Tgt Ion	Resp	Lower	Upper
105	7686		
105	100		
120	44.8	22.3	66.9





#95
 Naphthalene
 Concen: 50.286 ug/l
 RT: 15.13 min Scan# 4154
 Delta R.T. 0.00 min
 Lab File: VN059908.D
 Acq: 29 Jan 2020 13:37

Instrument :
 MSVOA_N
 ClientSampled :
 AOC-3-EXC-PIT-(0-5)-B

Tot Ion	128	Resp	Lower	Upper
128	100	316795		
127	13.0		10.4	15.6
129	10.8		8.6	12.8

