

Data Path : Z:\VOASRV\HPCHEM1\MSVOA N\DATA\VN012920\  
 Data File : VN059914.D  
 Acq On : 29 Jan 2020 15:57  
 Operator : JC/MD  
 Sample : PB126412ZHE#01  
 Misc : 5.00mL/MSVOA N/WATER  
 ALS Vial : 16 Sample Multiplier: 1

Instrument :  
 MSVOA\_N  
 ClientSampleId :  
 PB126412ZHE#01

Quant Time: Jan 30 01:10:48 2020  
 Quant Method : Z:\VOASRV\HPCHEM1\MSVOA\_N\METHODS\82N011320W.M  
 Quant Title : SW846 8260  
 QLast Update : Sat Jan 18 03:09:32 2020  
 Response via : Initial Calibration

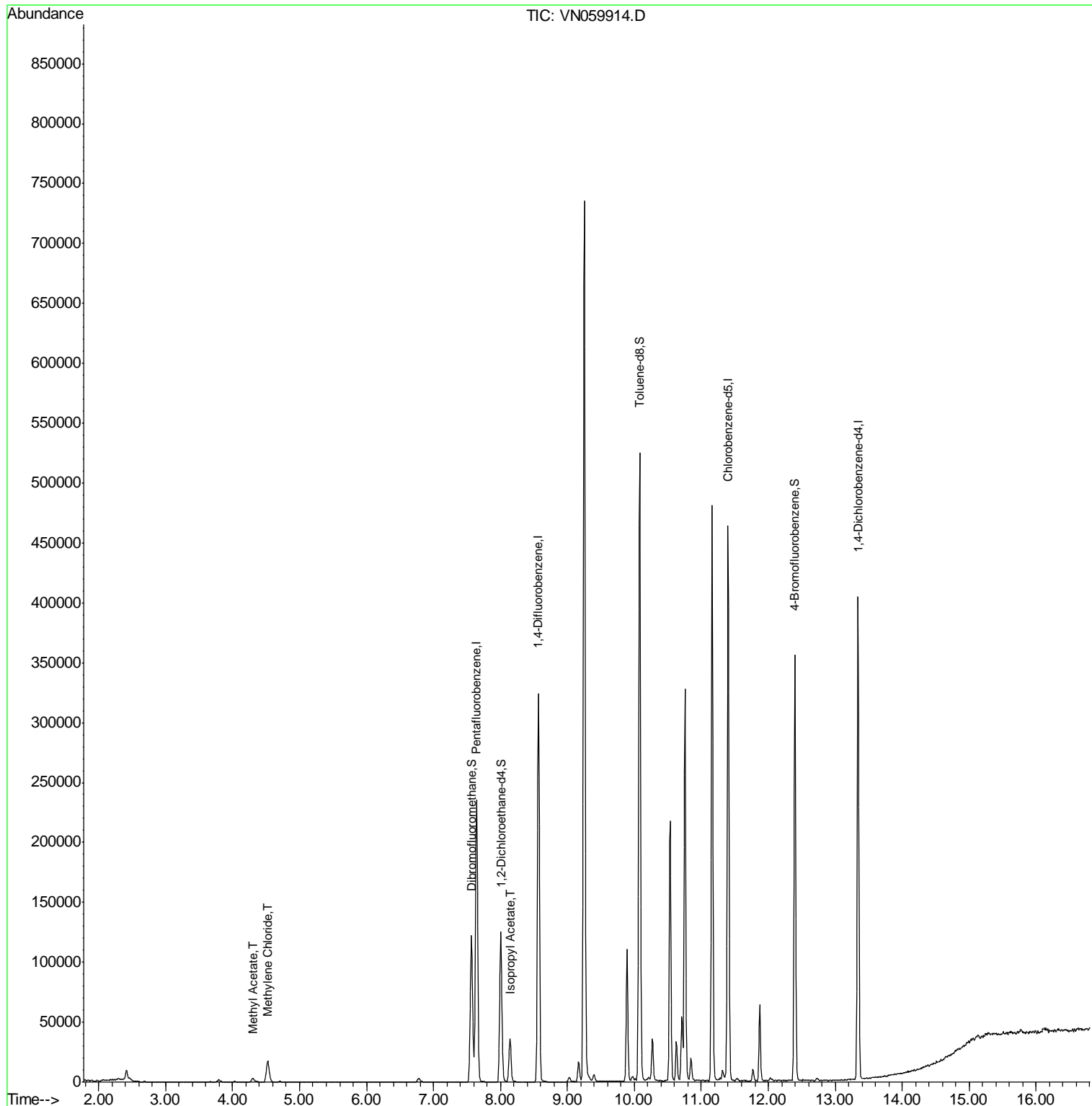
Internal Standards	R.T.	QIon	Response	Conc	Units	Dev(Min)
1) Pentafluorobenzene	7.64	168	203635	50.00	ug/l	0.00
34) 1,4-Difluorobenzene	8.57	114	306930	50.00	ug/l	0.00
63) Chlorobenzene-d5	11.40	117	273666	50.00	ug/l	0.00
72) 1,4-Dichlorobenzene-d4	13.34	152	112607	50.00	ug/l	0.00
System Monitoring Compounds						
33) 1,2-Dichloroethane-d4	8.00	65	108631	48.04	ug/l	0.00
Spiked Amount	50.000		Recovery	=	96.08%	
35) Dibromofluoromethane	7.57	113	90862	49.64	ug/l	0.00
Spiked Amount	50.000		Recovery	=	99.28%	
50) Toluene-d8	10.08	98	366363	51.66	ug/l	0.00
Spiked Amount	50.000		Recovery	=	103.32%	
62) 4-Bromofluorobenzene	12.40	95	120422	47.10	ug/l	0.00
Spiked Amount	50.000		Recovery	=	94.20%	
Target Compounds						
18) Methyl Acetate	4.30	43	5862	2.219	ug/l #	79
20) Methylene Chloride	4.53	84	14706	6.050	ug/l #	81
43) Isopropyl Acetate	8.14	43	42931	9.956	ug/l #	90

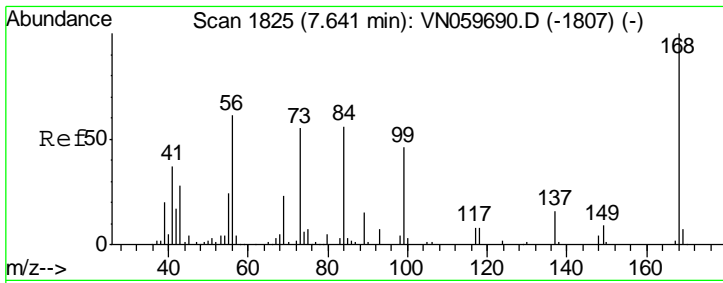
(#) = qualifier out of range (m) = manual integration (+) = signals summed

Data Path : Z:\VOASRV\HPCHEM1\MSVOA N\DATA\VN012920\  
 Data File : VN059914.D  
 Acq On : 29 Jan 2020 15:57  
 Operator : JC/MD  
 Sample : PB126412ZHE#01  
 Misc : 5.00mL/MSVOA N/WATER  
 ALS Vial : 16 Sample Multiplier: 1

Instrument :  
 MSVOA\_N  
 ClientSampleId :  
 PB126412ZHE#01

Quant Time: Jan 30 01:10:48 2020  
 Quant Method : Z:\VOASRV\HPCHEM1\MSVOA\_N\METHODS\82N011320W.M  
 Quant Title : SW846 8260  
 QLast Update : Sat Jan 18 03:09:32 2020  
 Response via : Initial Calibration

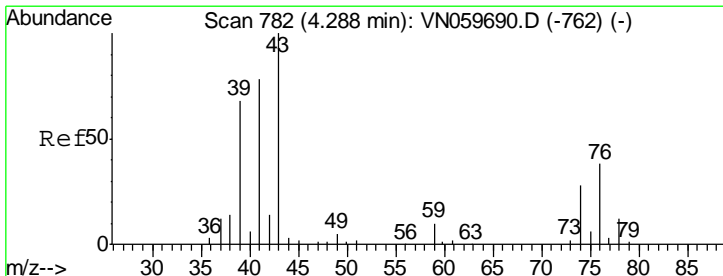
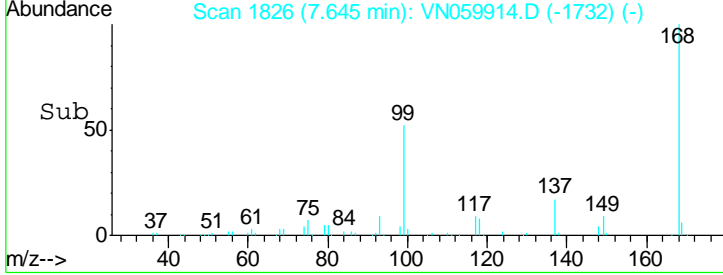
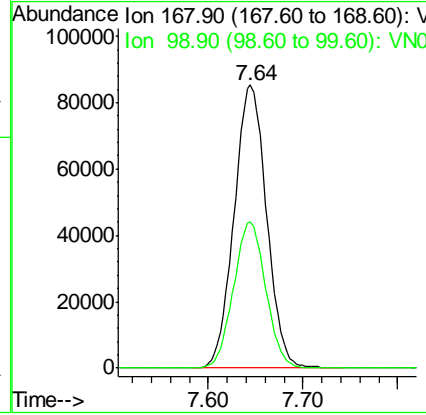
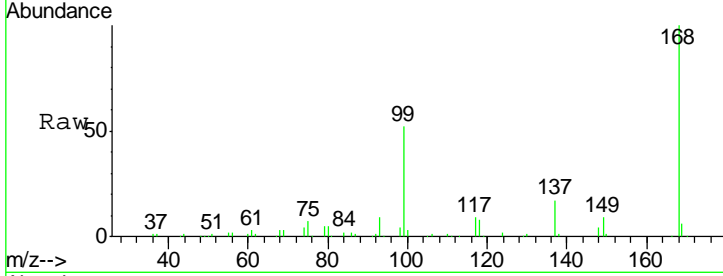




#1  
 Pentafluorobenzene  
 Concen: 50.000 ug/l  
 RT: 7.64 min Scan# 1826  
 Delta R.T. 0.00 min  
 Lab File: VN059914.D  
 Acq: 29 Jan 2020 15:57

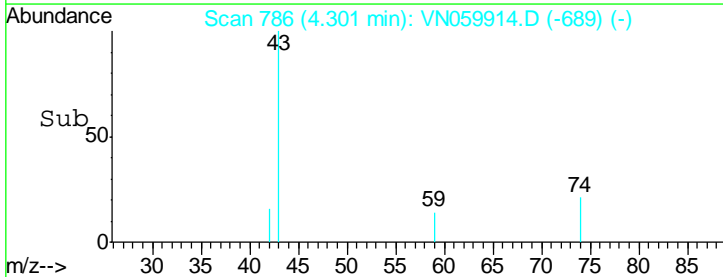
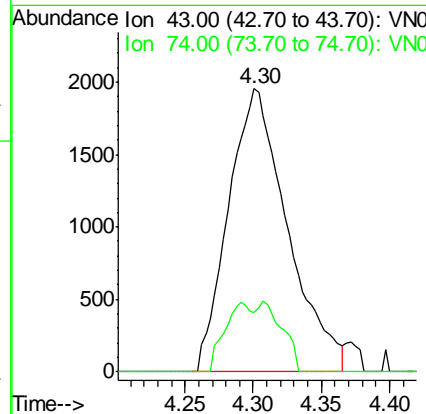
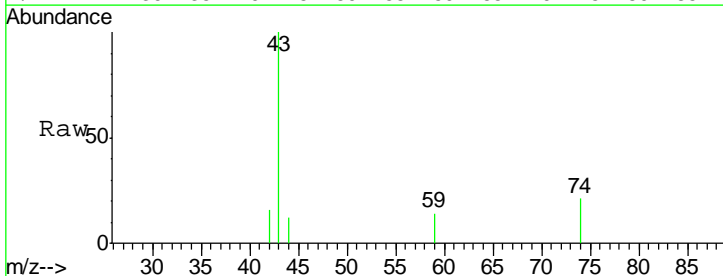
**Instrument :**  
 MSVOA\_N  
**ClientSampled :**  
 PB126412ZHE#01

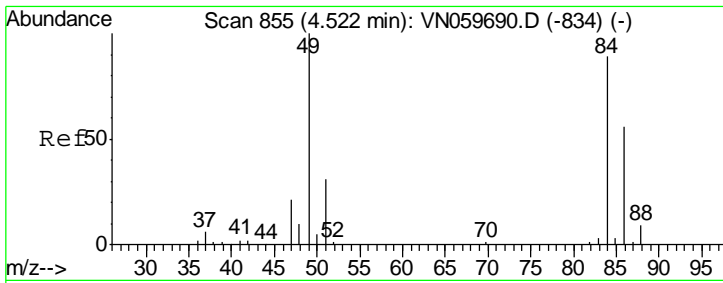
Tgt Ion: 168 Resp: 203635  
 Ion Ratio Lower Upper  
 168 100  
 99 51.7 48.2 72.4



#18  
 Methyl Acetate  
 Concen: 2.219 ug/l  
 RT: 4.30 min Scan# 786  
 Delta R.T. 0.01 min  
 Lab File: VN059914.D  
 Acq: 29 Jan 2020 15:57

Tgt Ion: 43 Resp: 5862  
 Ion Ratio Lower Upper  
 43 100  
 74 11.9 17.5 26.3#

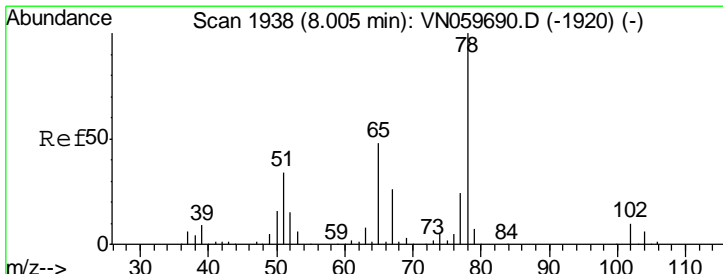
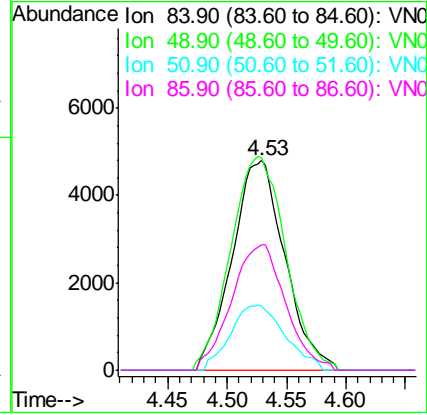
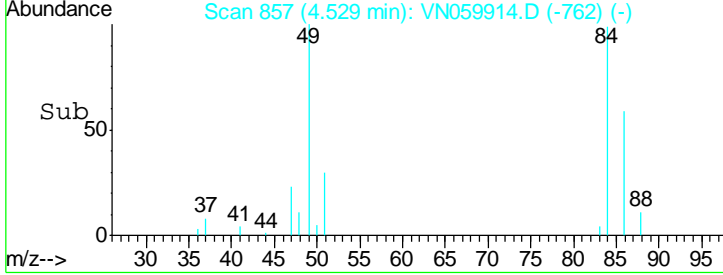
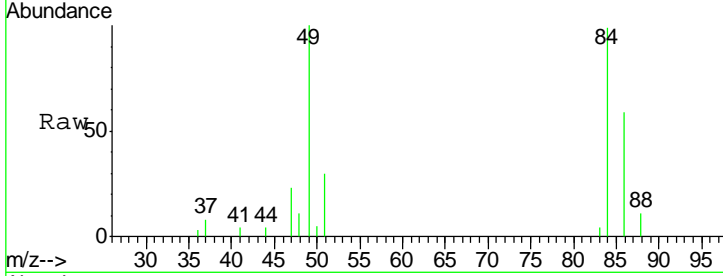




#20  
 Methylene Chloride  
 Concen: 6.050 ug/l  
 RT: 4.53 min Scan# 857  
 Delta R.T. 0.01 min  
 Lab File: VN059914.D  
 Acq: 29 Jan 2020 15:57

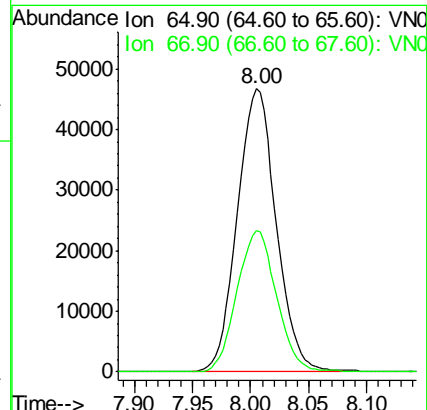
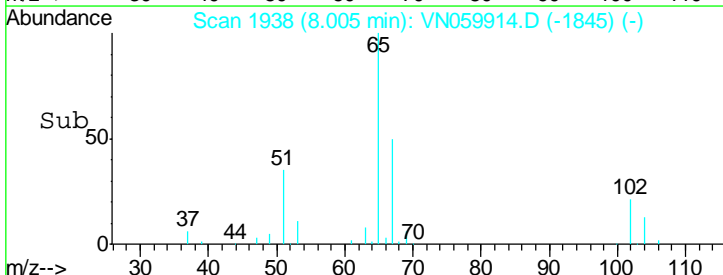
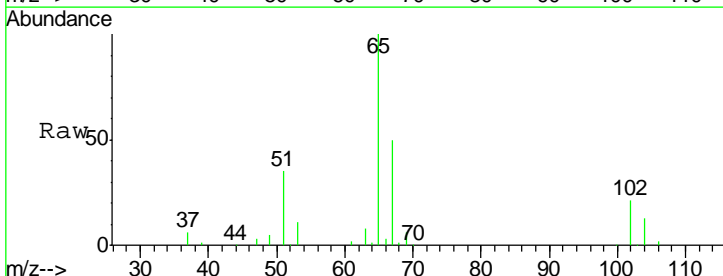
Instrument :  
 MSVOA\_N  
 ClientSampled :  
 PB126412ZHE#01

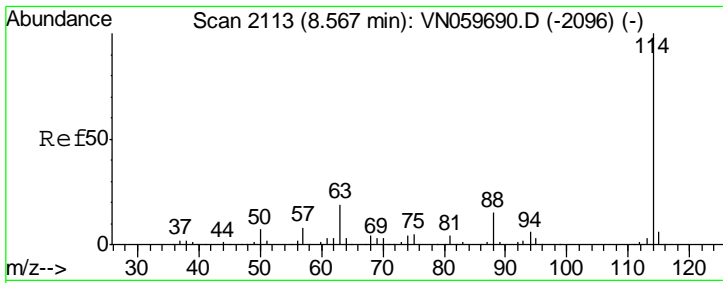
Tgt Ion	Resp	Lower	Upper
84	14706		
49	101.1	106.6	160.0#
51	30.3	31.9	47.9#
86	59.9	50.8	76.2



#33  
 1,2-Dichloroethane-d4  
 Concen: 48.037 ug/l  
 RT: 8.00 min Scan# 1938  
 Delta R.T. 0.00 min  
 Lab File: VN059914.D  
 Acq: 29 Jan 2020 15:57

Tgt Ion	Resp	Lower	Upper
65	108631		
67	50.8	0.0	103.0

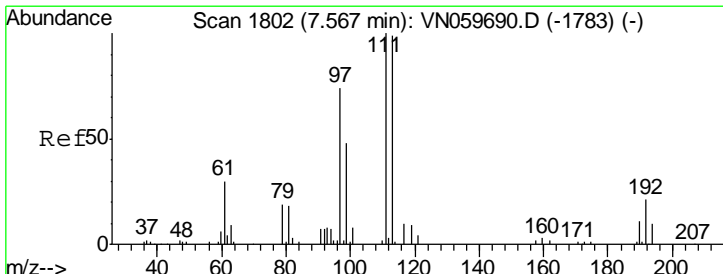
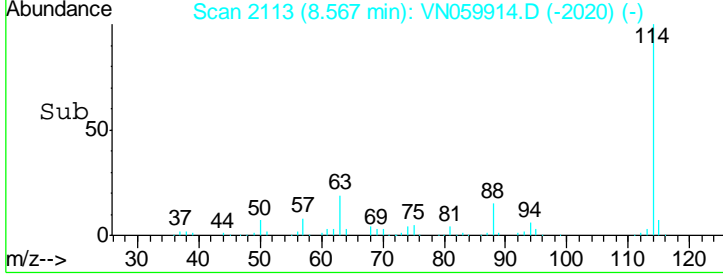
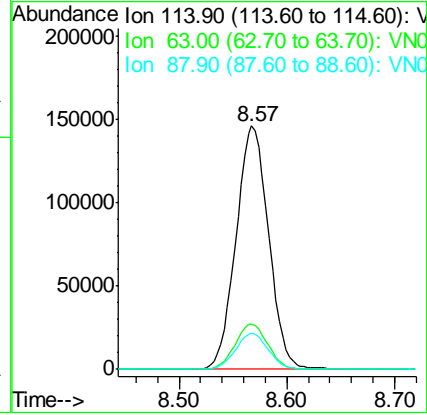
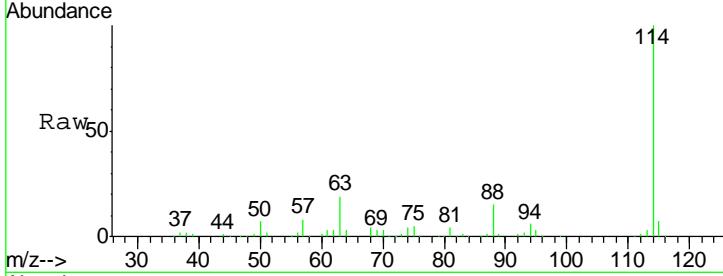




#34  
 1,4-Difluorobenzene  
 Concen: 50.000 ug/l  
 RT: 8.57 min Scan# 2113  
 Delta R.T. 0.00 min  
 Lab File: VN059914.D  
 Acq: 29 Jan 2020 15:57

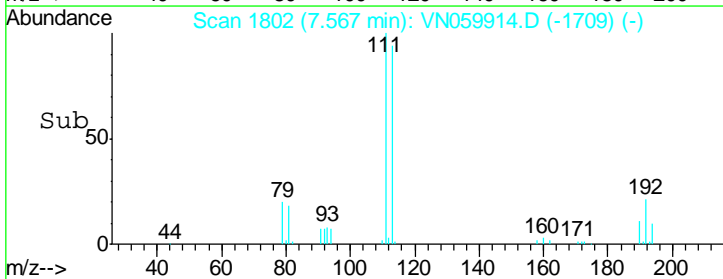
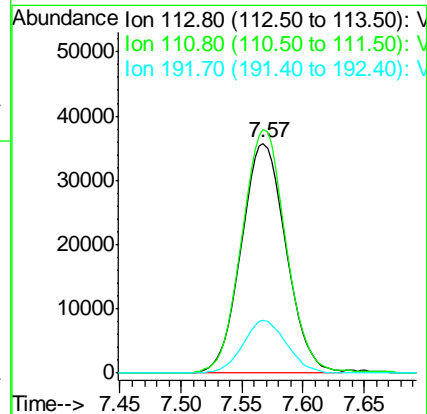
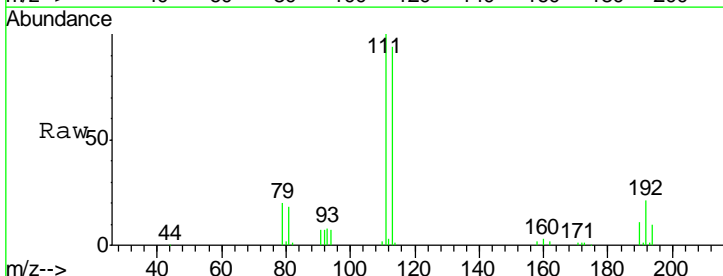
Instrument :  
 MSVOA\_N  
 ClientSampled :  
 PB126412ZHE#01

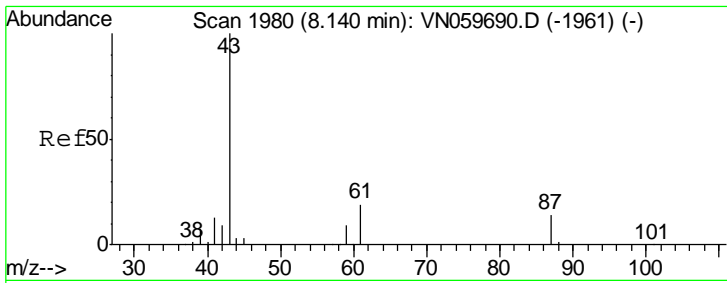
Tgt Ion	Resp	Lower	Upper
114	100		
63	18.6	0.0	43.6
88	14.7	0.0	31.4



#35  
 Dibromofluoromethane  
 Concen: 49.642 ug/l  
 RT: 7.57 min Scan# 1802  
 Delta R.T. 0.00 min  
 Lab File: VN059914.D  
 Acq: 29 Jan 2020 15:57

Tgt Ion	Resp	Lower	Upper
113	100		
111	105.2	83.5	125.3
192	22.3	15.4	23.2

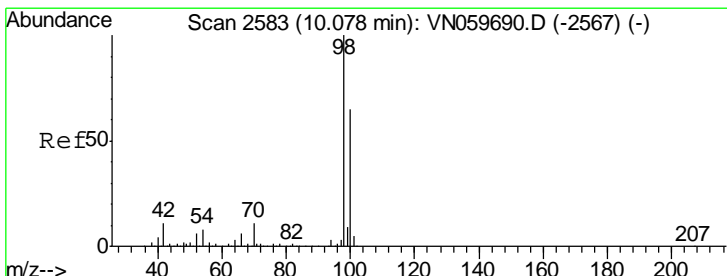
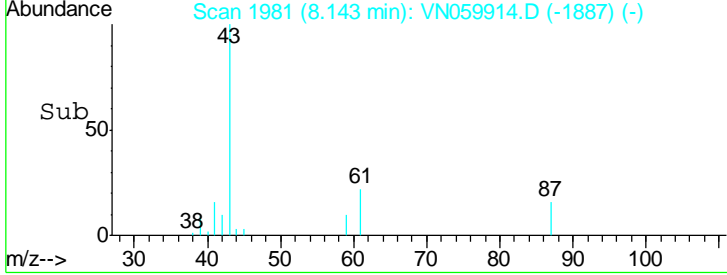
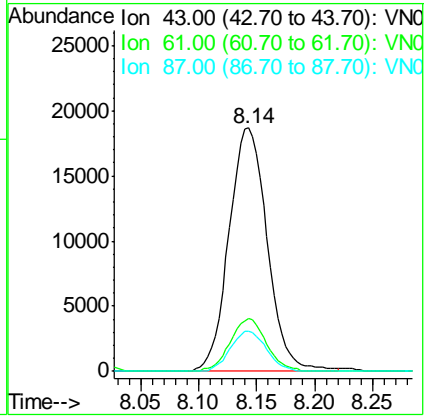
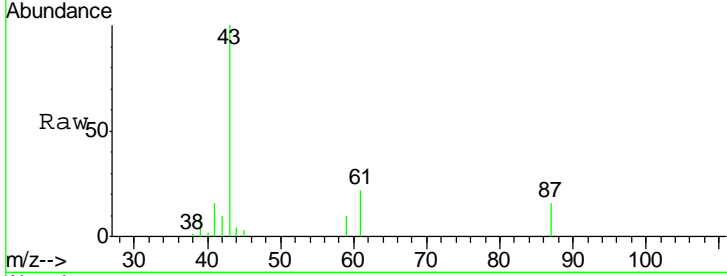




#43  
 Isopropyl Acetate  
 Concen: 9.956 ug/l  
 RT: 8.14 min Scan# 1981  
 Delta R.T. 0.00 min  
 Lab File: VN059914.D  
 Acq: 29 Jan 2020 15:57

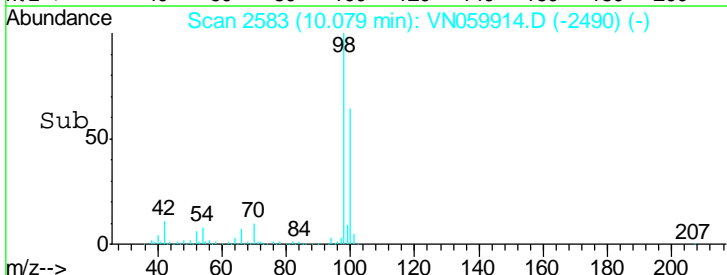
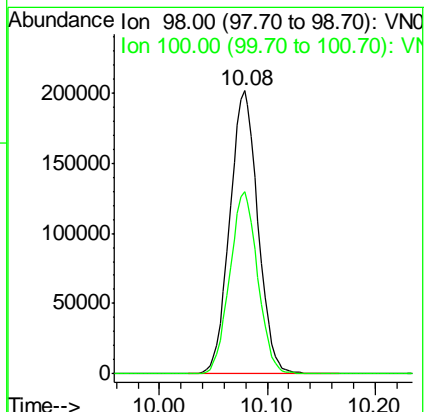
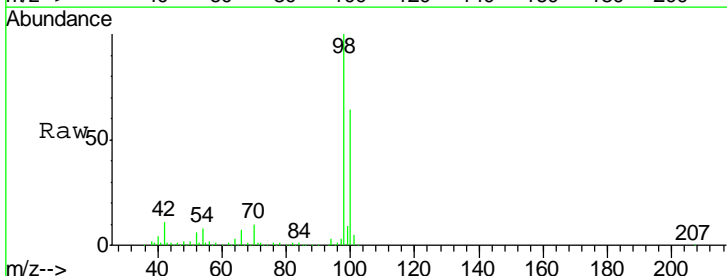
**Instrument :**  
 MSVOA\_N  
**ClientSampled :**  
 PB126412ZHE#01

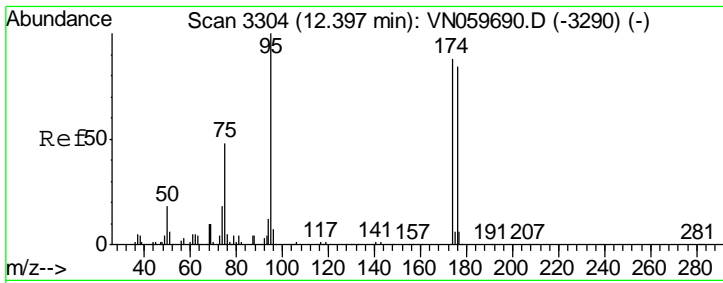
Tgt Ion	Resp	Lower	Upper
43	100		
61	20.3	20.2	30.2
87	15.4	9.5	14.3#



#50  
 Toluene-d8  
 Concen: 51.661 ug/l  
 RT: 10.08 min Scan# 2583  
 Delta R.T. 0.00 min  
 Lab File: VN059914.D  
 Acq: 29 Jan 2020 15:57

Tgt Ion	Resp	Lower	Upper
98	100		
100	63.9	51.2	76.8

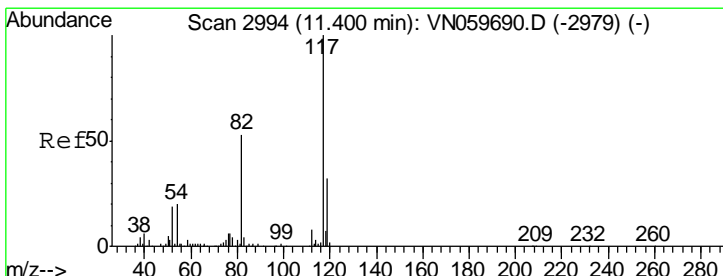
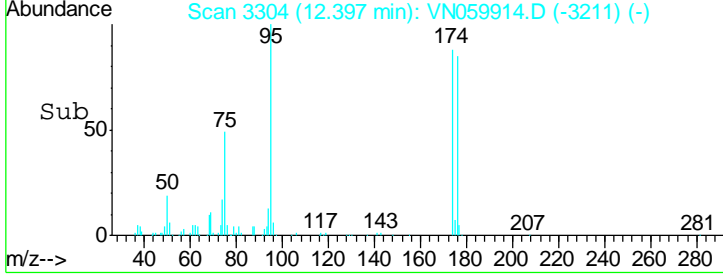
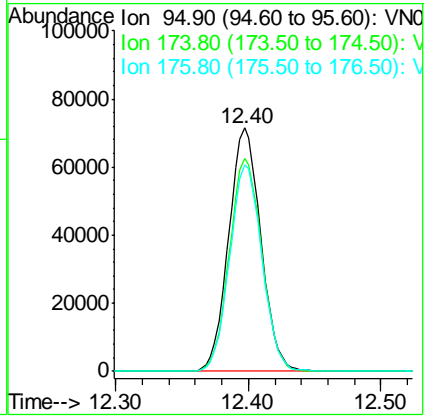
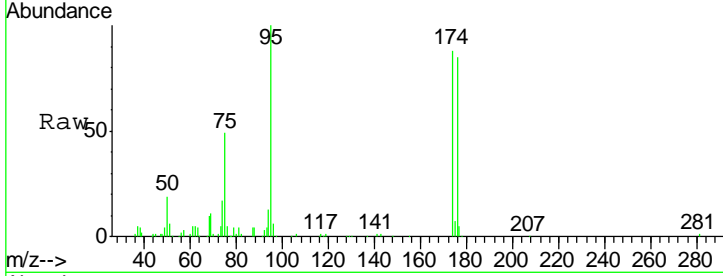




#62  
 4-Bromofluorobenzene  
 Concen: 47.103 ug/l  
 RT: 12.40 min Scan# 3304  
 Delta R.T. 0.00 min  
 Lab File: VN059914.D  
 Acq: 29 Jan 2020 15:57

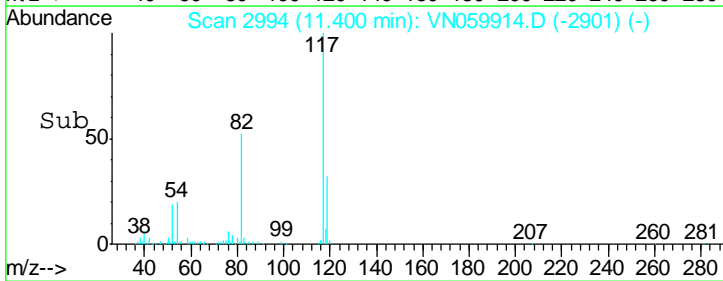
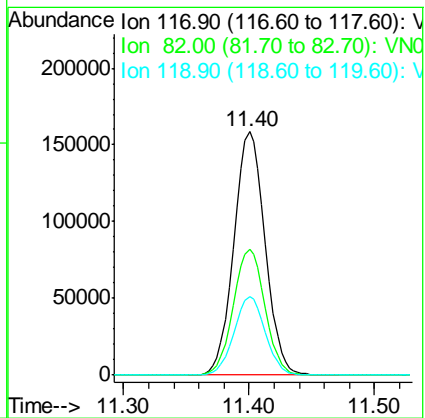
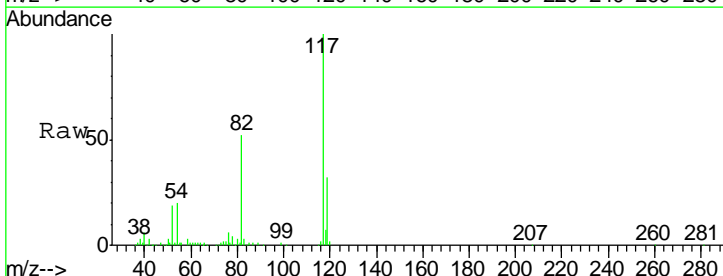
Instrument : MSVOA\_N  
 ClientSampled : PB126412ZHE#01

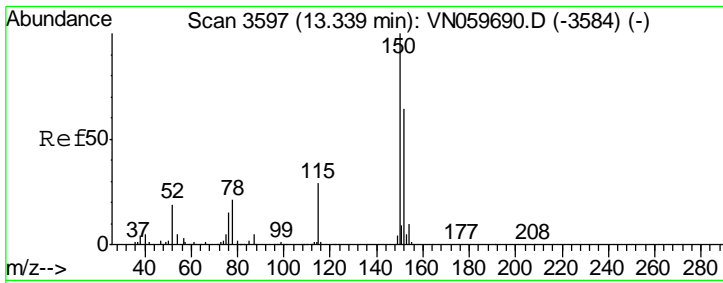
Tgt Ion	Resp	Lower	Upper
95	120422		
174	88.6	0.0	151.4
176	85.1	0.0	146.0



#63  
 Chlorobenzene-d5  
 Concen: 50.000 ug/l  
 RT: 11.40 min Scan# 2994  
 Delta R.T. 0.00 min  
 Lab File: VN059914.D  
 Acq: 29 Jan 2020 15:57

Tgt Ion	Resp	Lower	Upper
117	273666		
82	51.6	45.9	68.9
119	32.1	25.5	38.3





#72  
 1,4-Dichlorobenzene-d4  
 Concen: 50.000 ug/l  
 RT: 13.34 min Scan# 3597  
 Delta R.T. 0.00 min  
 Lab File: VN059914.D  
 Acq: 29 Jan 2020 15:57

Instrument : MSVOA\_N  
 ClientSampled : PB126412ZHE#01

Tot Ion	Resp	Lower	Upper
152	112607		
115	57.5	30.3	90.9
150	157.9	0.0	345.2

