

Data Path : Z:\voasrv\HPCHEM1\MSVOA\_N\Data\VN012925\  
 Data File : VN085568.D  
 Acq On : 29 Jan 2025 19:30  
 Operator : JC\MD  
 Sample : PB166319ZHE#05  
 Misc : 5.0mL/MSVOA\_N/WATER  
 ALS Vial : 23 Sample Multiplier: 1

Instrument :  
 MSVOA\_N  
 ClientSampleId :

Quant Time: Jan 30 00:41:30 2025  
 Quant Method : Z:\voasrv\HPCHEM1\MSVOA\_N\methods\82N011425W.M  
 Quant Title : SW846 8260  
 QLast Update : Wed Jan 15 02:16:08 2025  
 Response via : Initial Calibration

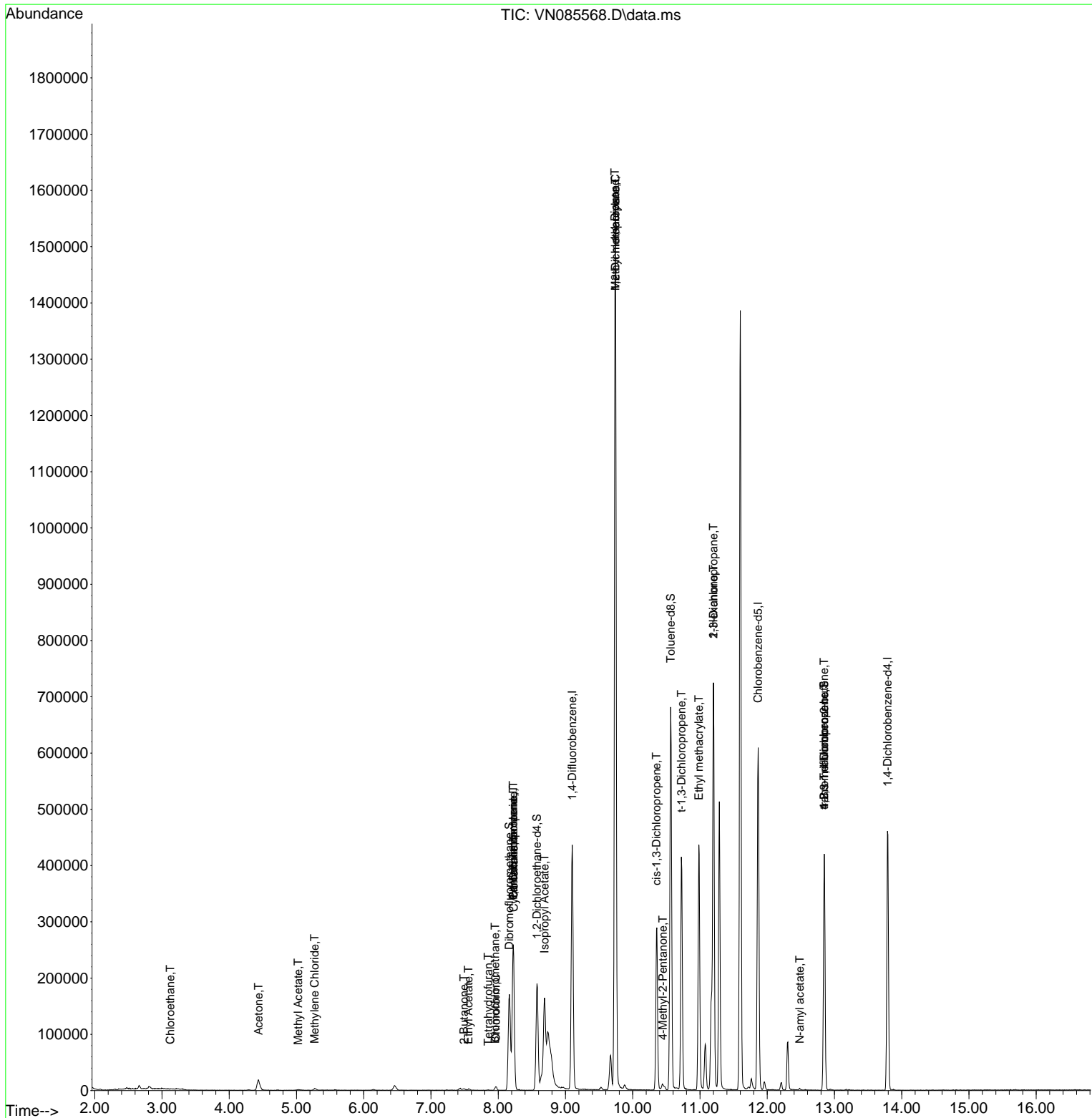
Compound	R.T.	QIon	Response	Conc	Units	Dev(Min)
-----						
Internal Standards						
1) Pentafluorobenzene	8.224	168	172261	50.000	ug/l	0.00
34) 1,4-Difluorobenzene	9.100	114	352073	50.000	ug/l	0.00
63) Chlorobenzene-d5	11.865	117	330526	50.000	ug/l	0.00
72) 1,4-Dichlorobenzene-d4	13.788	152	120934	50.000	ug/l	0.00
System Monitoring Compounds						
33) 1,2-Dichloroethane-d4	8.577	65	160982	57.894	ug/l	0.00
Spiked Amount	50.000	Range 74 - 125	Recovery	=	115.780%	
35) Dibromofluoromethane	8.165	113	119161	48.786	ug/l	0.00
Spiked Amount	50.000	Range 75 - 124	Recovery	=	97.580%	
50) Toluene-d8	10.565	98	452191	52.106	ug/l	0.00
Spiked Amount	50.000	Range 86 - 113	Recovery	=	104.220%	
62) 4-Bromofluorobenzene	12.847	95	135899	45.779	ug/l	0.00
Spiked Amount	50.000	Range 77 - 121	Recovery	=	91.560%	
Target Compounds						
						Qvalue
6) Chloroethane	3.124	64	336	0.209	ug/l #	44
16) Acetone	4.436	43	35821	39.870	ug/l	98
18) Methyl Acetate	5.024	43	3015	1.104	ug/l #	56
20) Methylene Chloride	5.271	84	1390	0.625	ug/l #	87
25) 2-Butanone	7.489	43	5383	4.071	ug/l #	90
28) Bromochloromethane	7.953	49	412	0.218	ug/l #	18
29) Tetrahydrofuran	7.853	42	579	0.691	ug/l #	42
30) Chloroform	7.965	83	5916	1.410	ug/l	94
31) Cyclohexane	8.230	56	5065	1.435	ug/l #	16
36) 1,1-Dichloropropene	8.224	75	16683	4.867	ug/l #	51
37) Ethyl Acetate	7.559	43	3707	1.071	ug/l #	88
38) Carbon Tetrachloride	8.224	117	19426	4.950	ug/l #	17
43) Isopropyl Acetate	8.688	43	221101	39.879	ug/l #	80
45) 1,2-Dichloropropane	9.741	63	1814	0.689	ug/l #	43
48) Methyl methacrylate	9.741	41	151106	60.562	ug/l #	46
49) 1,4-Dioxane	9.735	88	121	2.880	ug/l #	1
51) 4-Methyl-2-Pentanone	10.447	43	11207	3.483	ug/l #	75
53) t-1,3-Dichloropropene	10.724	75	784	0.215	ug/l	99
54) cis-1,3-Dichloropropene	10.353	75	46700	11.962	ug/l #	70
56) Ethyl methacrylate	10.982	69	2584	2.555	ug/l #	1
57) 1,3-Dichloropropane	11.200	76	7139	1.738	ug/l #	43
59) 2-Hexanone	11.200	43	89934	39.727	ug/l #	58
74) N-amyl acetate	12.482	43	1571	0.428	ug/l #	44
76) 1,2,3-Trichloropropane	12.847	75	76973	31.315	ug/l #	1
81) trans-1,4-Dichloro-2-b...	12.847	75	76973	84.725	ug/l #	3

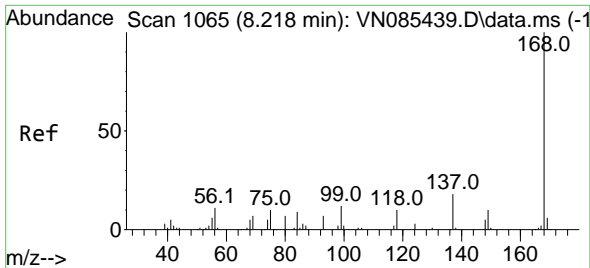
(#) = qualifier out of range (m) = manual integration (+) = signals summed

Data Path : Z:\voasrv\HPCHEM1\MSVOA\_N\Data\VN012925\  
 Data File : VN085568.D  
 Acq On : 29 Jan 2025 19:30  
 Operator : JC\MD  
 Sample : PB166319ZHE#05  
 Misc : 5.0mL/MSVOA\_N/WATER  
 ALS Vial : 23 Sample Multiplier: 1

Instrument :  
 MSVOA\_N  
 ClientSampleId :

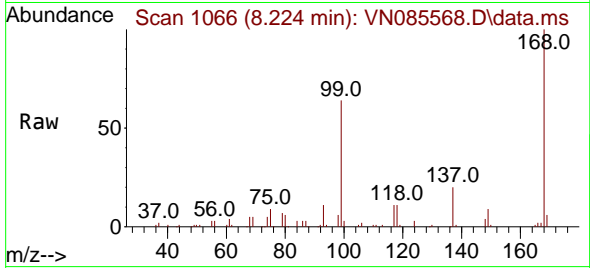
Quant Time: Jan 30 00:41:30 2025  
 Quant Method : Z:\voasrv\HPCHEM1\MSVOA\_N\methods\82N011425W.M  
 Quant Title : SW846 8260  
 QLast Update : Wed Jan 15 02:16:08 2025  
 Response via : Initial Calibration



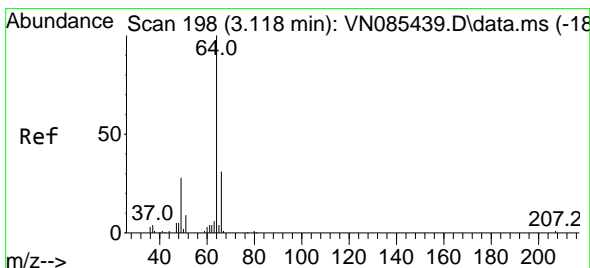
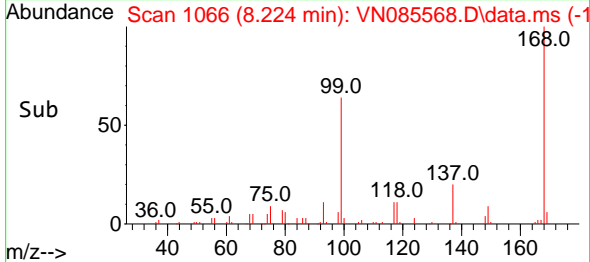
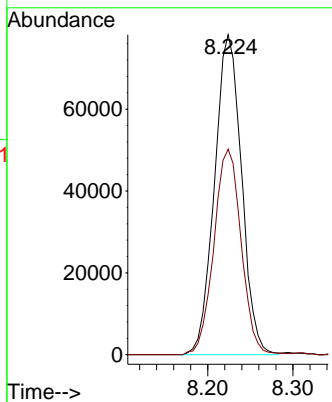


#1  
 Pentafluorobenzene  
 Concen: 50.000 ug/l  
 RT: 8.224 min Scan# 1065  
 Delta R.T. 0.006 min  
 Lab File: VN085568.D  
 Acq: 29 Jan 2025 19:30

Instrument : MSVOA\_N  
 ClientSampleId :

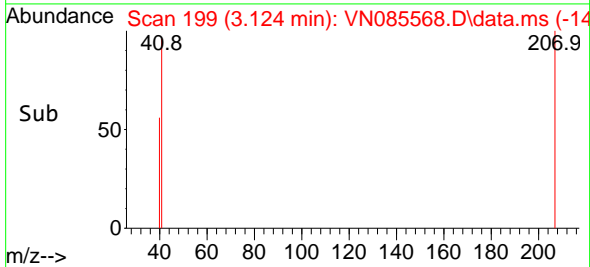
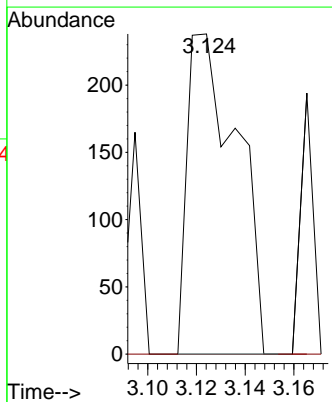
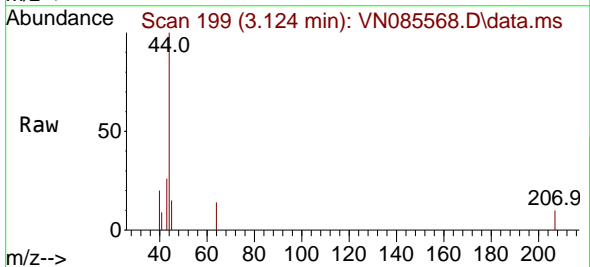


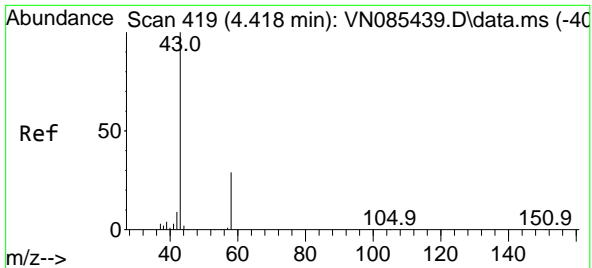
Tgt Ion:168 Resp: 172261  
 Ion Ratio Lower Upper  
 168 100  
 99 64.2 53.6 80.4



#6  
 Chloroethane  
 Concen: 0.209 ug/l  
 RT: 3.124 min Scan# 199  
 Delta R.T. 0.006 min  
 Lab File: VN085568.D  
 Acq: 29 Jan 2025 19:30

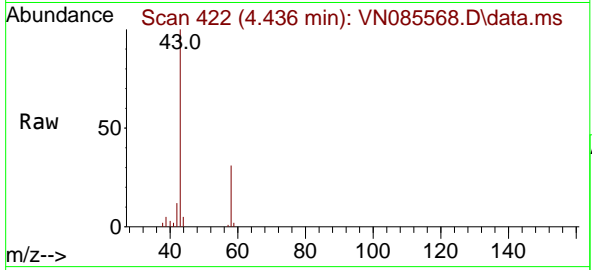
Tgt Ion: 64 Resp: 336  
 Ion Ratio Lower Upper  
 64 100  
 66 0.0 24.6 36.8#



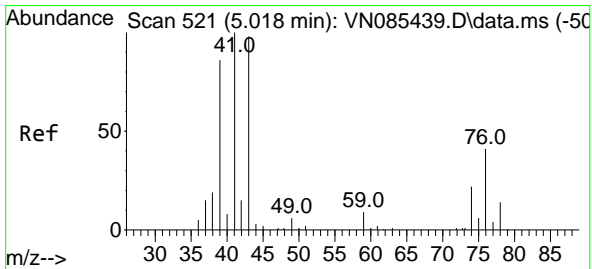
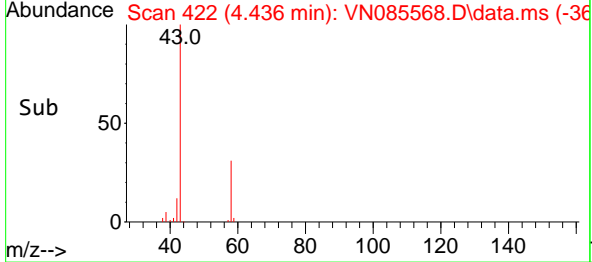
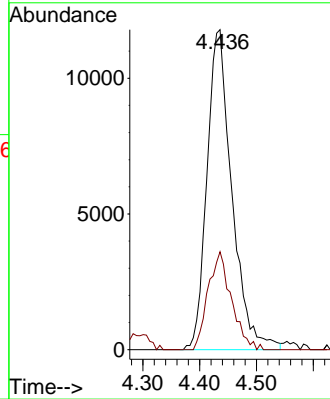


#16  
 Acetone  
 Concen: 39.870 ug/l  
 RT: 4.436 min Scan# 41  
 Delta R.T. 0.018 min  
 Lab File: VN085568.D  
 Acq: 29 Jan 2025 19:30

Instrument :  
 MSVOA\_N  
 ClientSampleId :

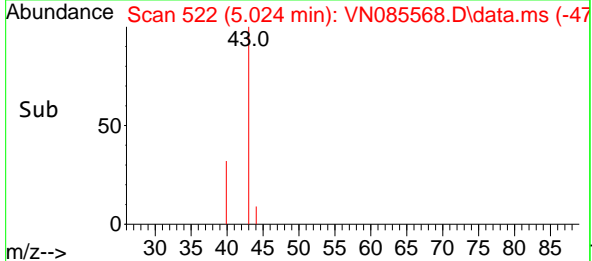
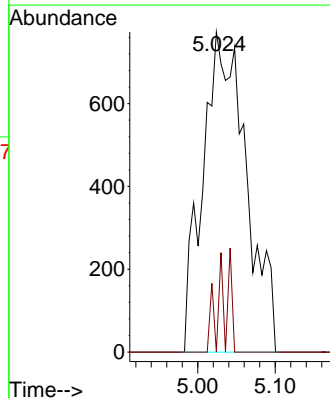
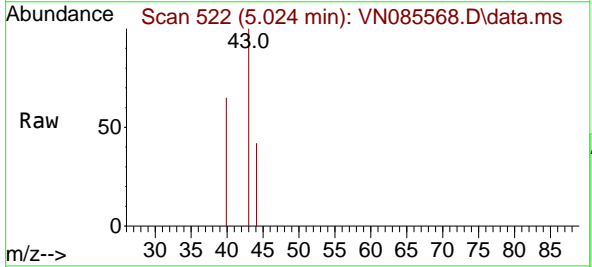


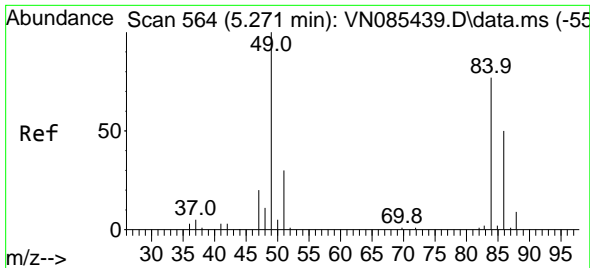
Tgt Ion: 43 Resp: 35821  
 Ion Ratio Lower Upper  
 43 100  
 58 30.6 23.8 35.6



#18  
 Methyl Acetate  
 Concen: 1.104 ug/l  
 RT: 5.024 min Scan# 522  
 Delta R.T. 0.006 min  
 Lab File: VN085568.D  
 Acq: 29 Jan 2025 19:30

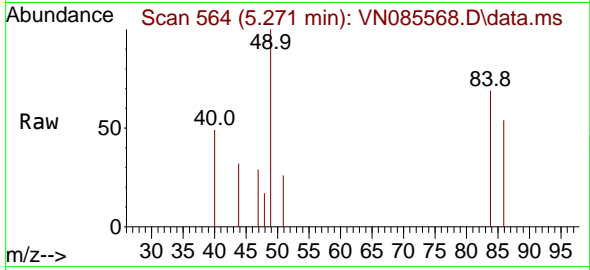
Tgt Ion: 43 Resp: 3015  
 Ion Ratio Lower Upper  
 43 100  
 74 2.0 18.6 28.0#





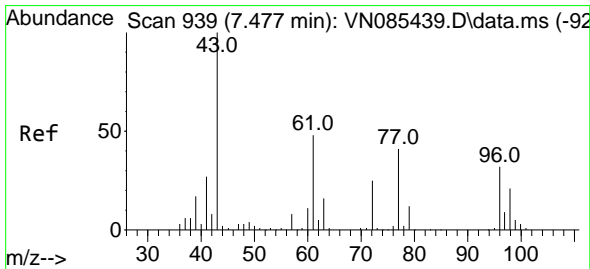
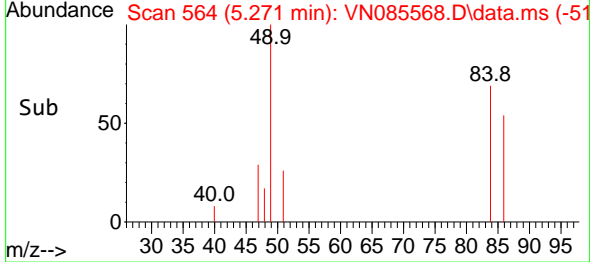
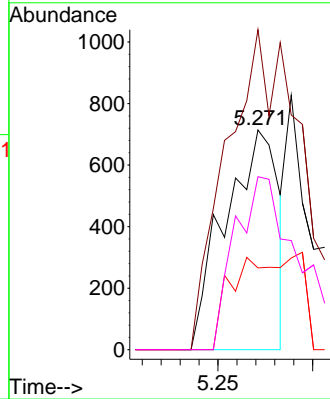
#20  
 Methylene Chloride  
 Concen: 0.625 ug/l  
 RT: 5.271 min Scan# 50  
 Delta R.T. 0.000 min  
 Lab File: VN085568.D  
 Acq: 29 Jan 2025 19:30

Instrument :  
 MSVOA\_N  
 ClientSampleId :



Tgt Ion: 84 Resp: 1390

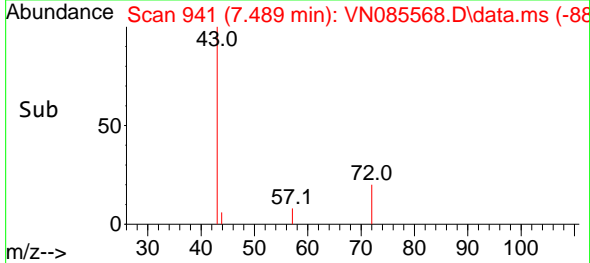
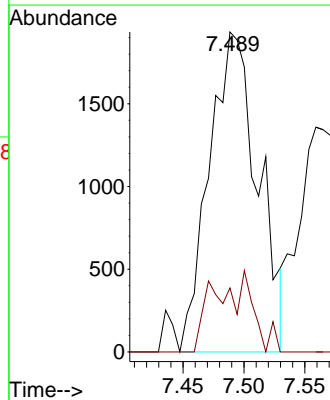
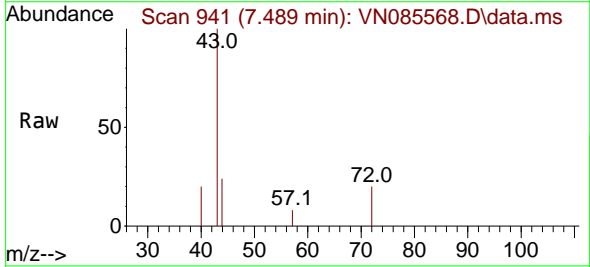
Ion	Ratio	Lower	Upper
84	100		
49	145.7	104.1	156.1
51	37.3	31.0	46.4
86	78.7	51.9	77.9

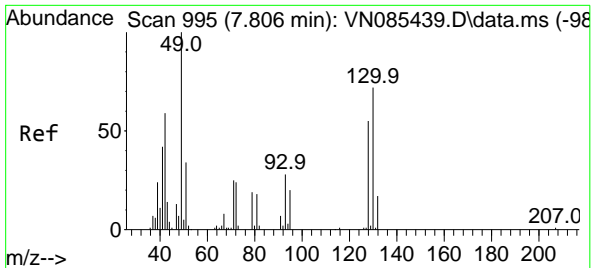


#25  
 2-Butanone  
 Concen: 4.071 ug/l  
 RT: 7.489 min Scan# 941  
 Delta R.T. 0.012 min  
 Lab File: VN085568.D  
 Acq: 29 Jan 2025 19:30

Tgt Ion: 43 Resp: 5383

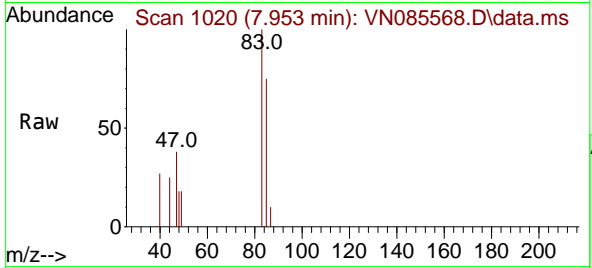
Ion	Ratio	Lower	Upper
43	100		
72	20.0	20.2	30.4





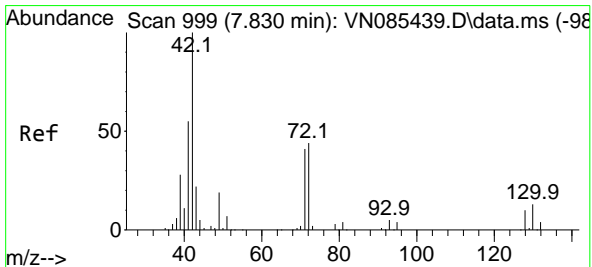
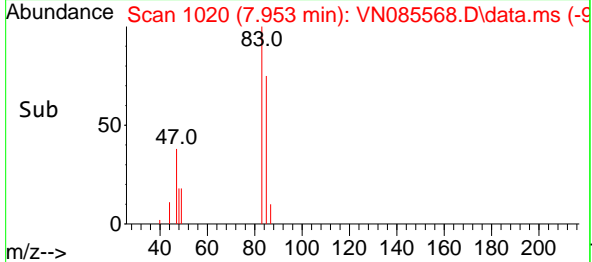
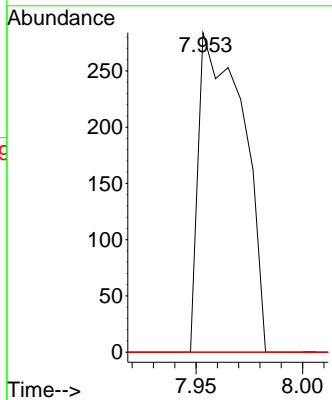
#28  
 Bromochloromethane  
 Concen: 0.218 ug/l  
 RT: 7.953 min Scan# 1000  
 Delta R.T. 0.147 min  
 Lab File: VN085568.D  
 Acq: 29 Jan 2025 19:30

Instrument :  
 MSVOA\_N  
 ClientSampleId :



Tgt Ion: 49 Resp: 412

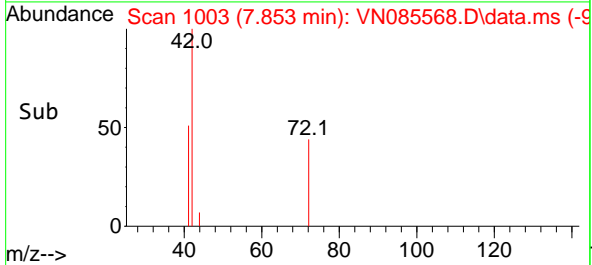
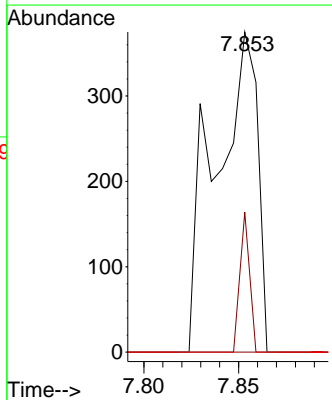
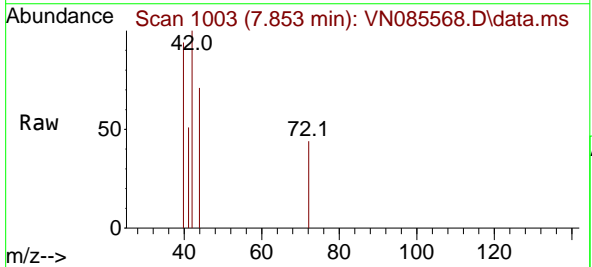
Ion	Ratio	Lower	Upper
49	100		
129	0.0	0.0	4.4
130	0.0	55.0	82.4#

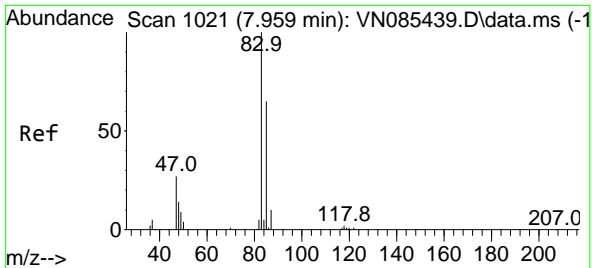


#29  
 Tetrahydrofuran  
 Concen: 0.691 ug/l  
 RT: 7.853 min Scan# 1003  
 Delta R.T. 0.024 min  
 Lab File: VN085568.D  
 Acq: 29 Jan 2025 19:30

Tgt Ion: 42 Resp: 579

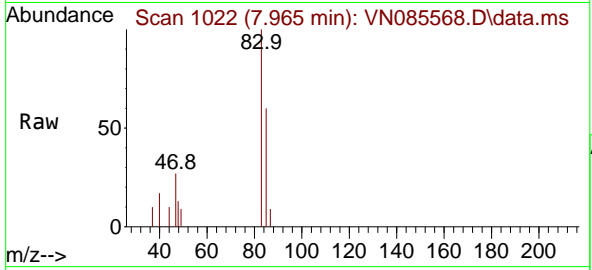
Ion	Ratio	Lower	Upper
42	100		
72	10.0	34.2	51.2#
71	0.0	32.5	48.7#



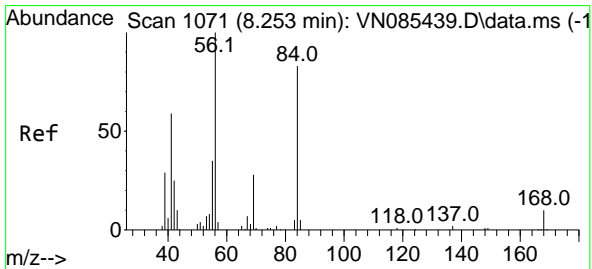
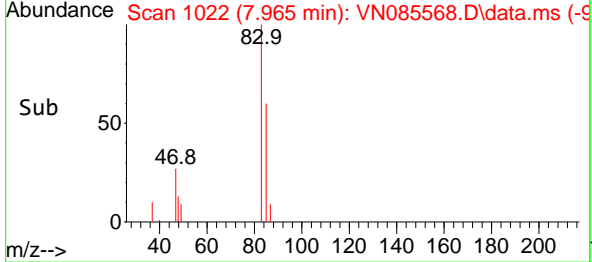
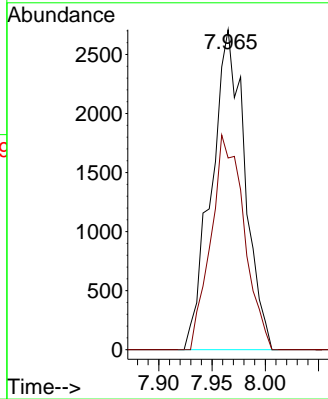


#30  
 Chloroform  
 Concen: 1.410 ug/l  
 RT: 7.965 min Scan# 1067  
 Delta R.T. 0.006 min  
 Lab File: VN085568.D  
 Acq: 29 Jan 2025 19:30

Instrument : MSVOA\_N  
 ClientSampleId :

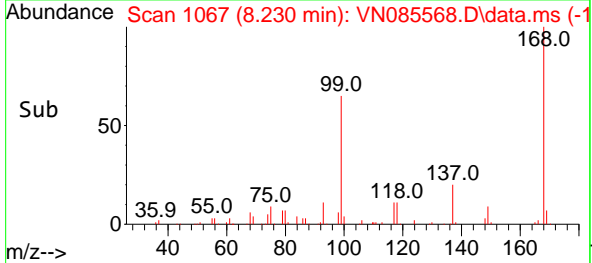
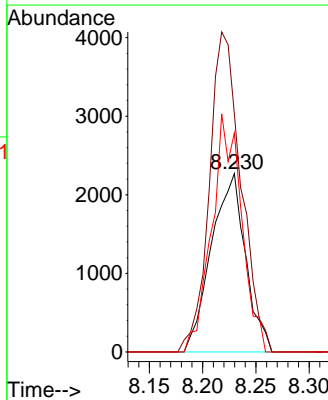
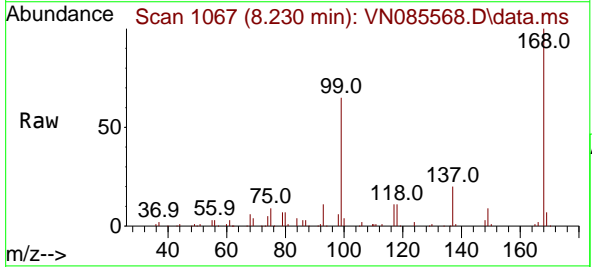


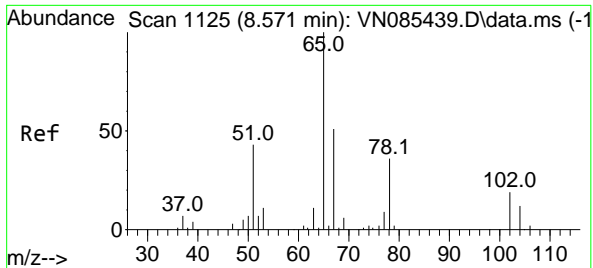
Tgt Ion: 83 Resp: 5916  
 Ion Ratio Lower Upper  
 83 100  
 85 59.9 51.8 77.6



#31  
 Cyclohexane  
 Concen: 1.435 ug/l  
 RT: 8.230 min Scan# 1067  
 Delta R.T. -0.023 min  
 Lab File: VN085568.D  
 Acq: 29 Jan 2025 19:30

Tgt Ion: 56 Resp: 5065  
 Ion Ratio Lower Upper  
 56 100  
 69 133.6 22.2 33.4#  
 84 122.8 66.4 99.6#

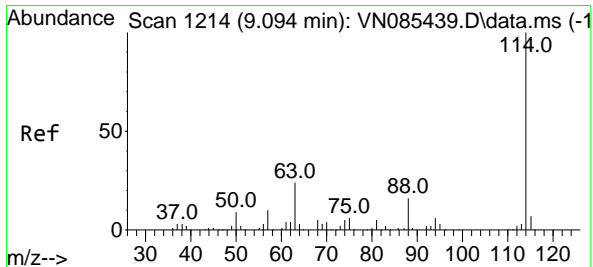
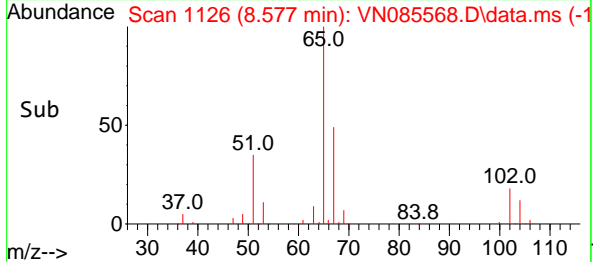
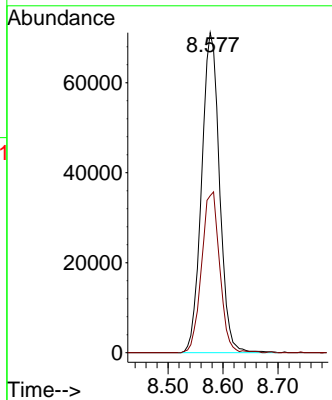
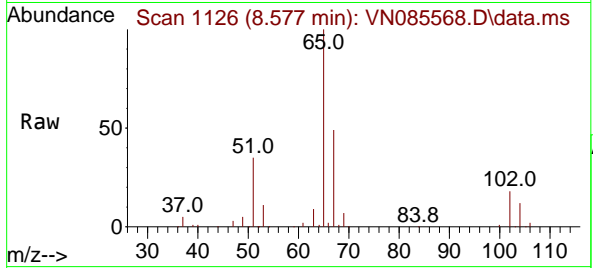




#33  
 1,2-Dichloroethane-d4  
 Concen: 57.894 ug/l  
 RT: 8.577 min Scan# 1126  
 Delta R.T. 0.006 min  
 Lab File: VN085568.D  
 Acq: 29 Jan 2025 19:30

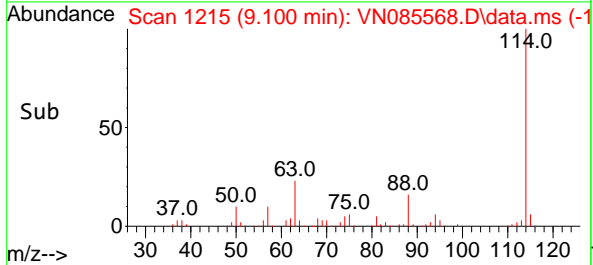
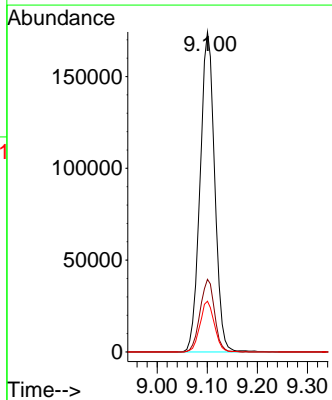
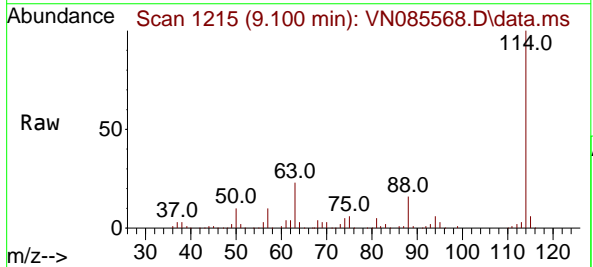
Instrument :  
 MSVOA\_N  
 ClientSampleId :

Tgt Ion: 65 Resp: 160982  
 Ion Ratio Lower Upper  
 65 100  
 67 50.9 0.0 101.6

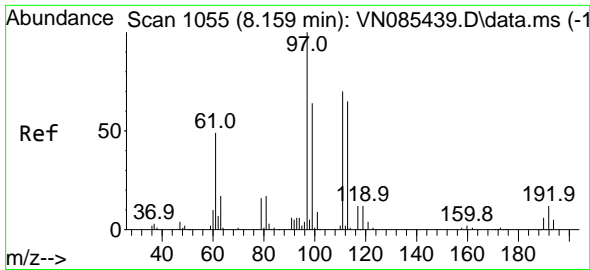


#34  
 1,4-Difluorobenzene  
 Concen: 50.000 ug/l  
 RT: 9.100 min Scan# 1215  
 Delta R.T. 0.006 min  
 Lab File: VN085568.D  
 Acq: 29 Jan 2025 19:30

Tgt Ion: 114 Resp: 352073  
 Ion Ratio Lower Upper  
 114 100  
 63 22.7 0.0 47.6  
 88 15.9 0.0 32.6

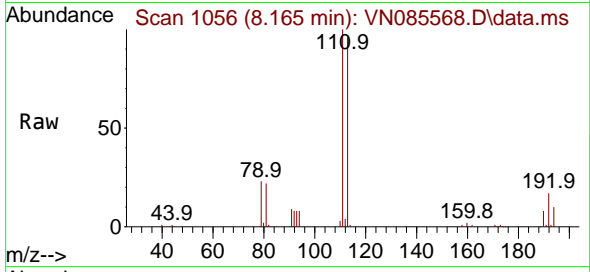




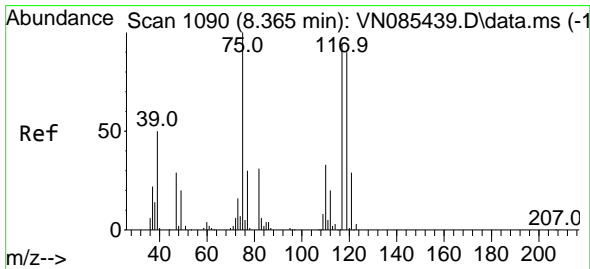
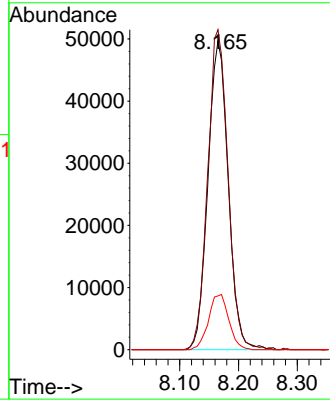
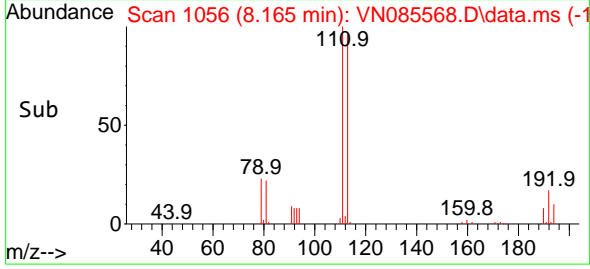


#35  
 Dibromofluoromethane  
 Concen: 48.786 ug/l  
 RT: 8.165 min Scan# 1066  
 Delta R.T. 0.006 min  
 Lab File: VN085568.D  
 Acq: 29 Jan 2025 19:30

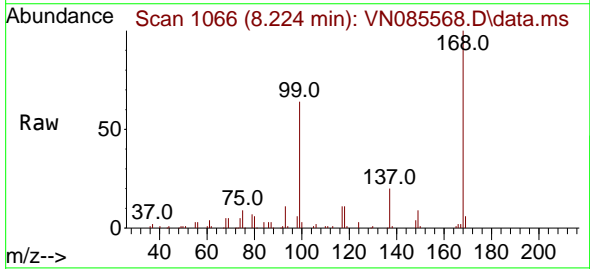
Instrument : MSVOA\_N  
 ClientSampleId :



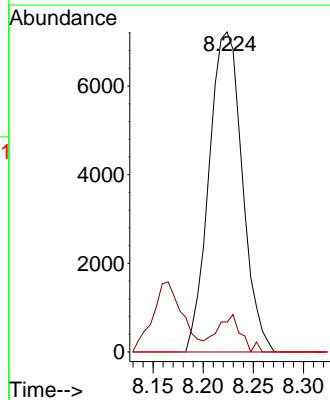
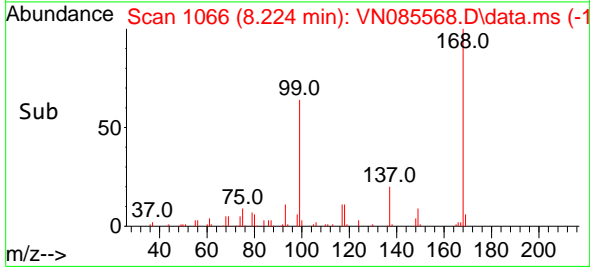
Tgt Ion:113 Resp: 119161  
 Ion Ratio Lower Upper  
 113 100  
 111 103.8 82.7 124.1  
 192 17.9 14.3 21.5

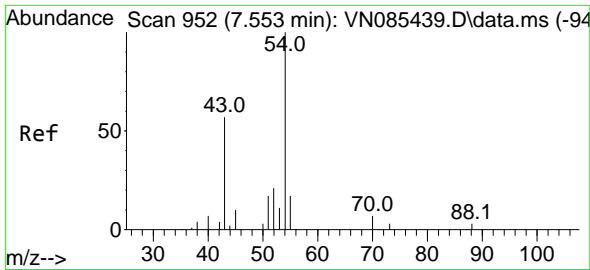


#36  
 1,1-Dichloropropene  
 Concen: 4.867 ug/l  
 RT: 8.224 min Scan# 1066  
 Delta R.T. -0.141 min  
 Lab File: VN085568.D  
 Acq: 29 Jan 2025 19:30



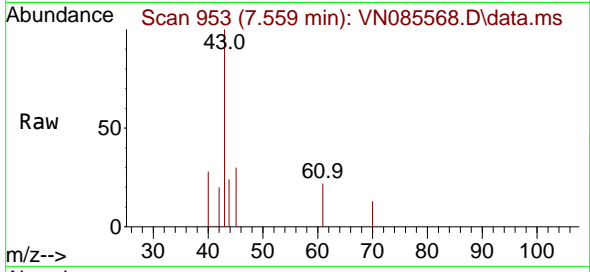
Tgt Ion: 75 Resp: 16683  
 Ion Ratio Lower Upper  
 75 100  
 110 8.4 16.5 49.5#  
 77 0.0 24.4 36.6#





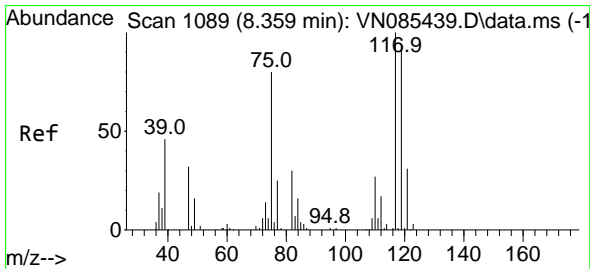
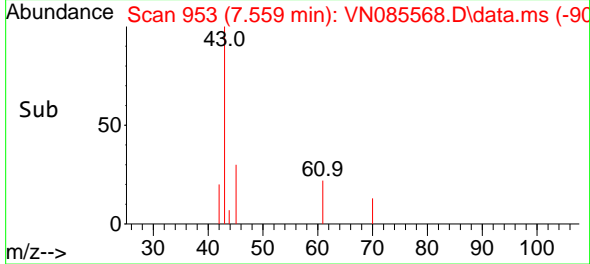
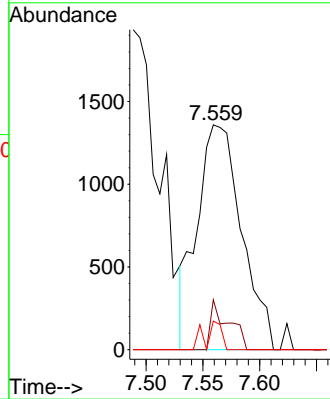
#37  
 Ethyl Acetate  
 Concen: 1.071 ug/l  
 RT: 7.559 min Scan# 911  
 Delta R.T. 0.006 min  
 Lab File: VN085568.D  
 Acq: 29 Jan 2025 19:30

Instrument :  
 MSVOA\_N  
 ClientSampleId :



Tgt Ion: 43 Resp: 3707

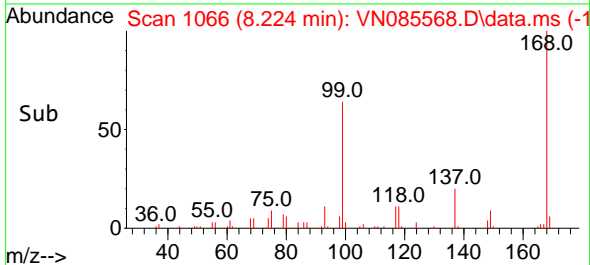
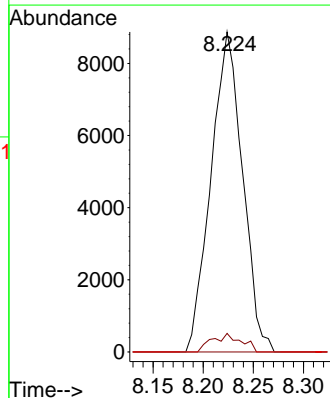
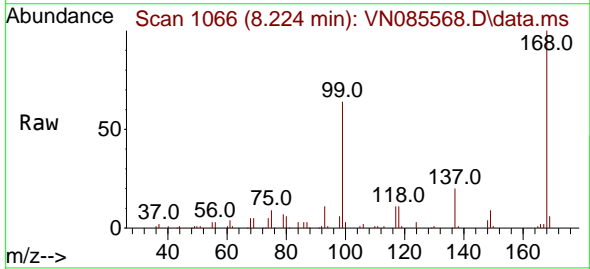
Ion	Ratio	Lower	Upper
43	100		
61	8.9	10.9	16.3#
70	4.5	7.5	11.3#

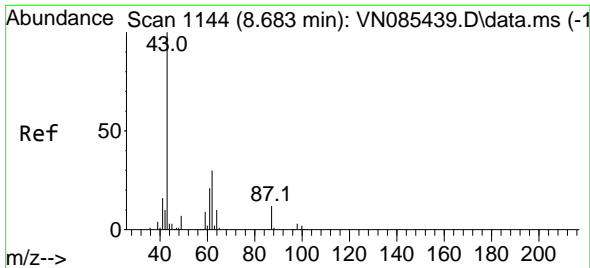


#38  
 Carbon Tetrachloride  
 Concen: 4.950 ug/l  
 RT: 8.224 min Scan# 1066  
 Delta R.T. -0.135 min  
 Lab File: VN085568.D  
 Acq: 29 Jan 2025 19:30

Tgt Ion: 117 Resp: 19426

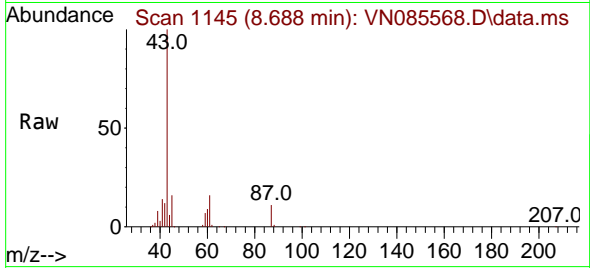
Ion	Ratio	Lower	Upper
117	100		
119	5.8	75.4	113.2#
121	0.0	24.6	37.0#



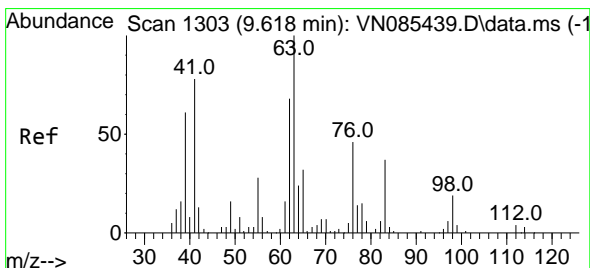
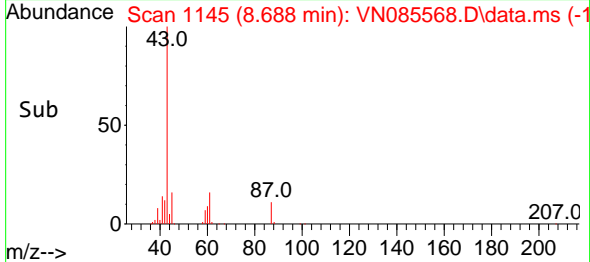
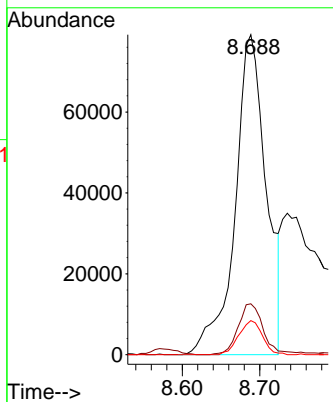


#43  
 Isopropyl Acetate  
 Concen: 39.879 ug/l  
 RT: 8.688 min Scan# 1145  
 Delta R.T. 0.006 min  
 Lab File: VN085568.D  
 Acq: 29 Jan 2025 19:30

Instrument :  
 MSVOA\_N  
 ClientSampleId :

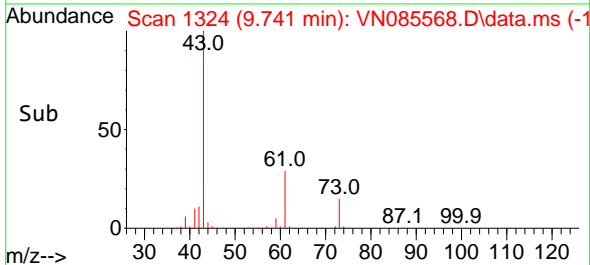
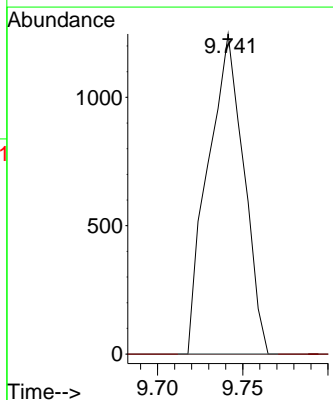
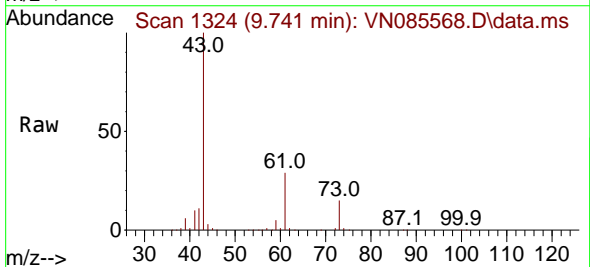


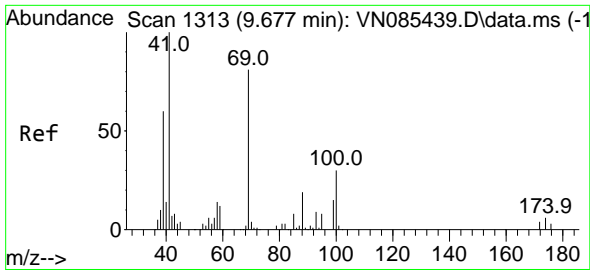
Tgt Ion: 43 Resp: 221101  
 Ion Ratio Lower Upper  
 43 100  
 61 13.2 20.7 31.1#  
 87 8.1 9.8 14.8#



#45  
 1,2-Dichloropropane  
 Concen: 0.689 ug/l  
 RT: 9.741 min Scan# 1324  
 Delta R.T. 0.124 min  
 Lab File: VN085568.D  
 Acq: 29 Jan 2025 19:30

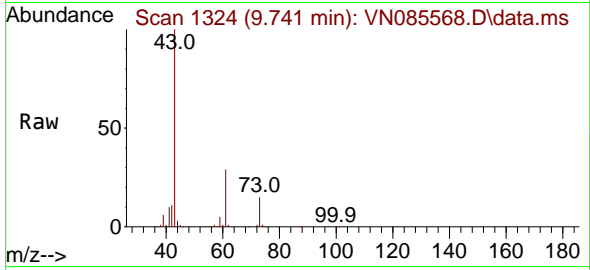
Tgt Ion: 63 Resp: 1814  
 Ion Ratio Lower Upper  
 63 100  
 65 0.0 25.6 38.4#



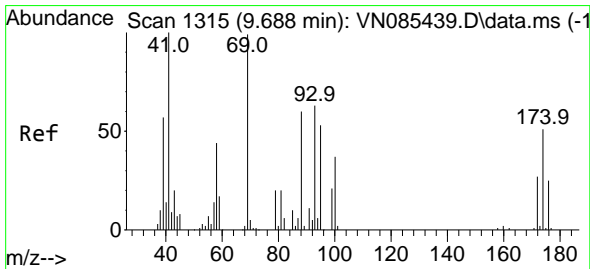
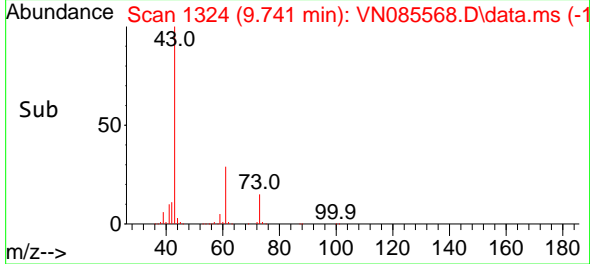
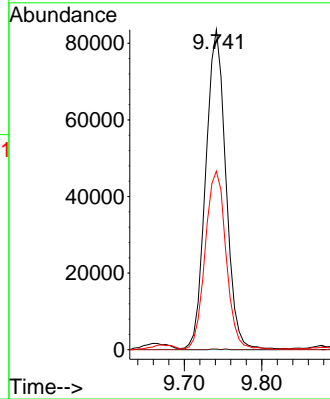


#48  
 Methyl methacrylate  
 Concen: 60.562 ug/l  
 RT: 9.741 min Scan# 11  
 Delta R.T. 0.064 min  
 Lab File: VN085568.D  
 Acq: 29 Jan 2025 19:30

Instrument :  
 MSVOA\_N  
 ClientSampleId :

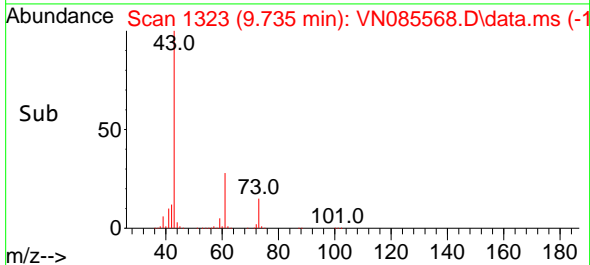
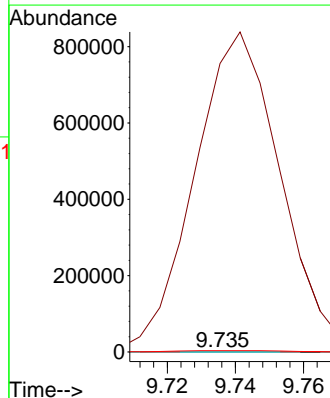
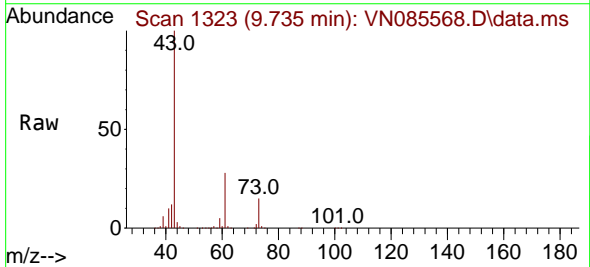


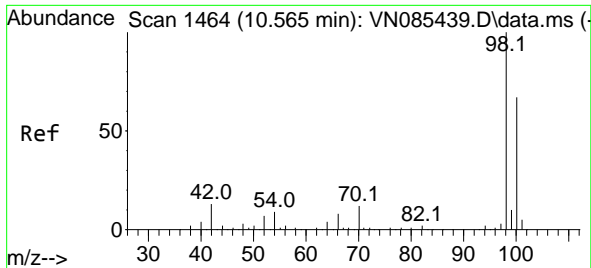
Tgt Ion: 41 Resp: 151106  
 Ion Ratio Lower Upper  
 41 100  
 69 0.1 64.7 97.1#  
 39 57.9 49.0 73.6



#49  
 1,4-Dioxane  
 Concen: 2.880 ug/l  
 RT: 9.735 min Scan# 1323  
 Delta R.T. 0.047 min  
 Lab File: VN085568.D  
 Acq: 29 Jan 2025 19:30

Tgt Ion: 88 Resp: 121  
 Ion Ratio Lower Upper  
 88 100  
 43 1224212.4 26.6 39.8#  
 58 6746.3 59.5 89.3#

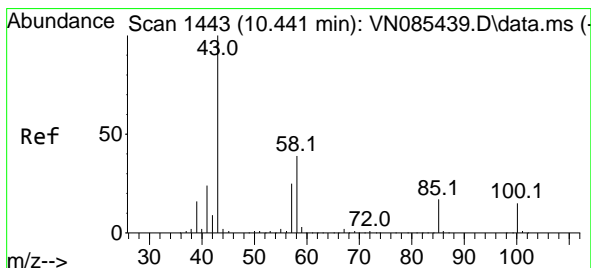
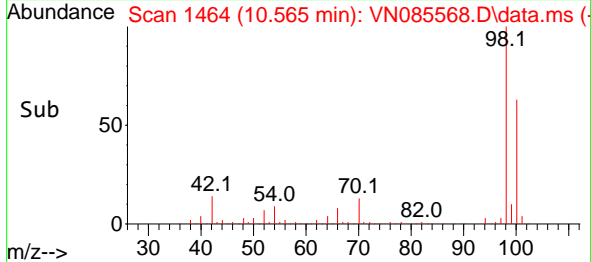
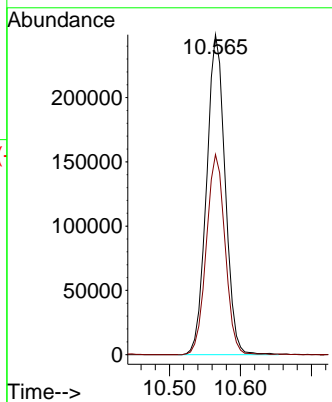
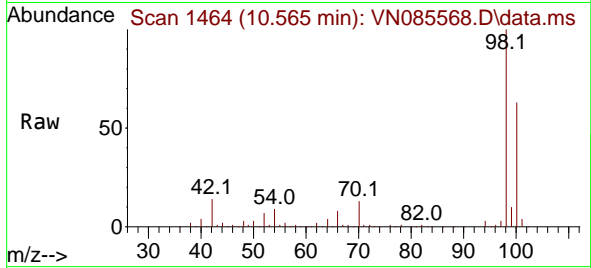




#50  
 Toluene-d8  
 Concen: 52.106 ug/l  
 RT: 10.565 min Scan# 1444  
 Delta R.T. 0.000 min  
 Lab File: VN085568.D  
 Acq: 29 Jan 2025 19:30

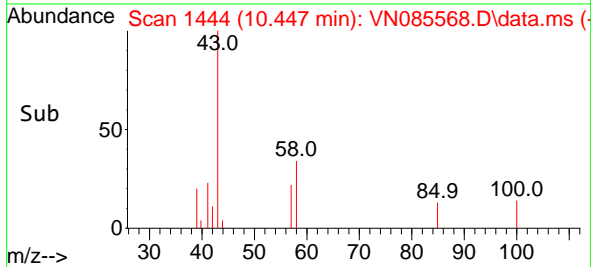
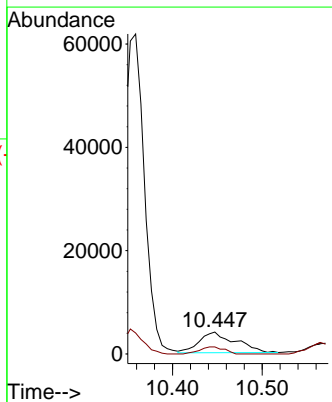
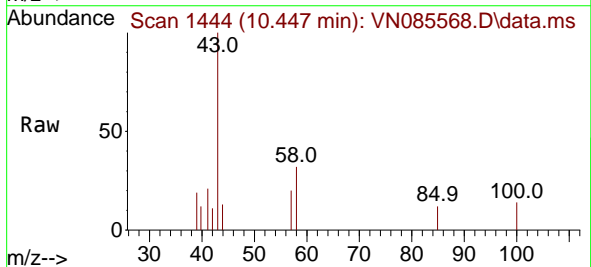
Instrument : MSVOA\_N  
 ClientSampleId :

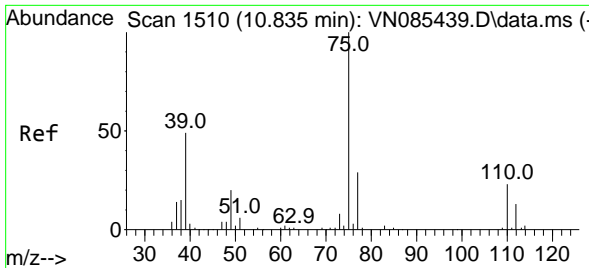
Tgt Ion: 98 Resp: 452191  
 Ion Ratio Lower Upper  
 98 100  
 100 63.1 52.2 78.4



#51  
 4-Methyl-2-Pentanone  
 Concen: 3.483 ug/l  
 RT: 10.447 min Scan# 1444  
 Delta R.T. 0.006 min  
 Lab File: VN085568.D  
 Acq: 29 Jan 2025 19:30

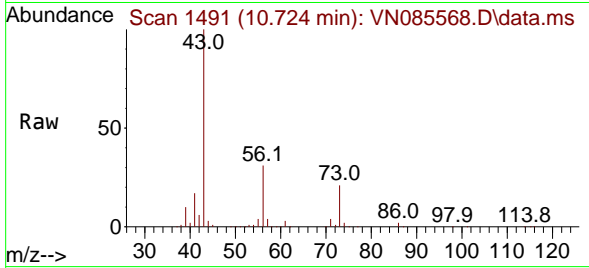
Tgt Ion: 43 Resp: 11207  
 Ion Ratio Lower Upper  
 43 100  
 58 23.2 30.5 45.7#



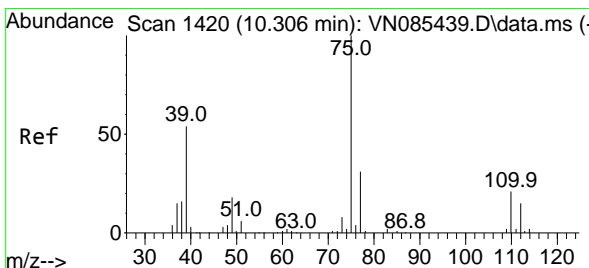
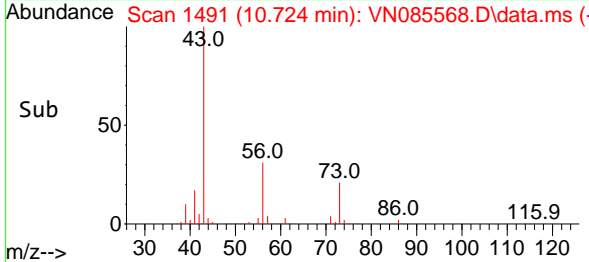
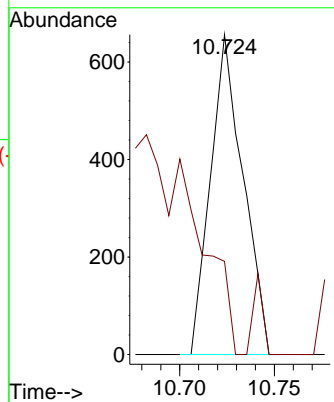


#53  
 t-1,3-Dichloropropene  
 Concen: 0.215 ug/l  
 RT: 10.724 min Scan# 1491  
 Delta R.T. -0.112 min  
 Lab File: VN085568.D  
 Acq: 29 Jan 2025 19:30

Instrument : MSVOA\_N  
 ClientSampleId :

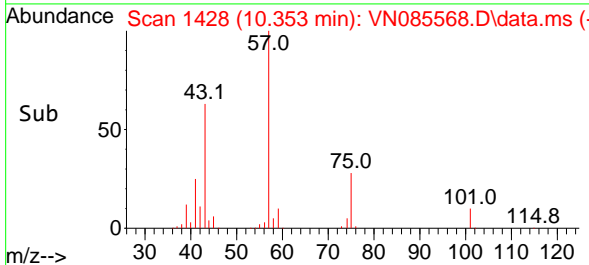
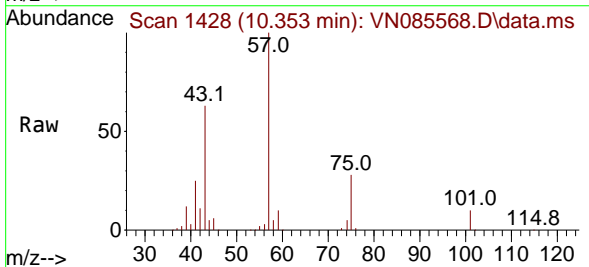
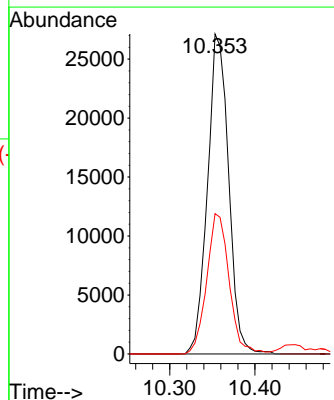


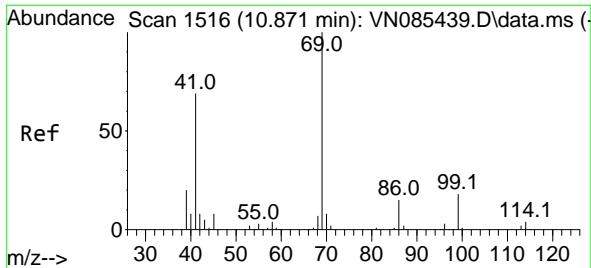
Tgt Ion: 75 Resp: 784  
 Ion Ratio Lower Upper  
 75 100  
 77 29.1 23.5 35.3



#54  
 cis-1,3-Dichloropropene  
 Concen: 11.962 ug/l  
 RT: 10.353 min Scan# 1428  
 Delta R.T. 0.047 min  
 Lab File: VN085568.D  
 Acq: 29 Jan 2025 19:30

Tgt Ion: 75 Resp: 46700  
 Ion Ratio Lower Upper  
 75 100  
 77 0.0 25.0 37.4#  
 39 43.8 43.1 64.7



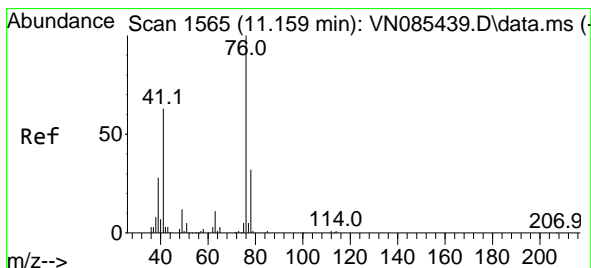
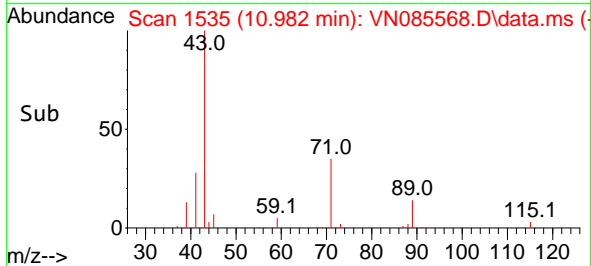
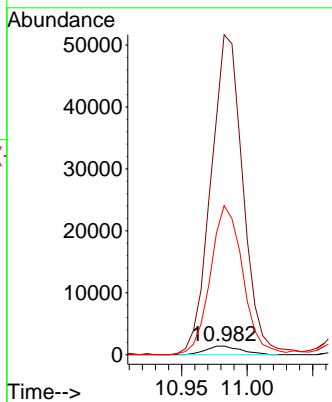
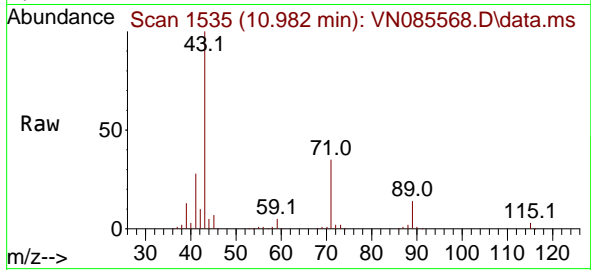


#56  
 Ethyl methacrylate  
 Concen: 2.555 ug/l  
 RT: 10.982 min Scan# 1535  
 Delta R.T. 0.111 min  
 Lab File: VN085568.D  
 Acq: 29 Jan 2025 19:30

Instrument : MSVOA\_N  
 ClientSampleId :

Tgt Ion: 69 Resp: 2584

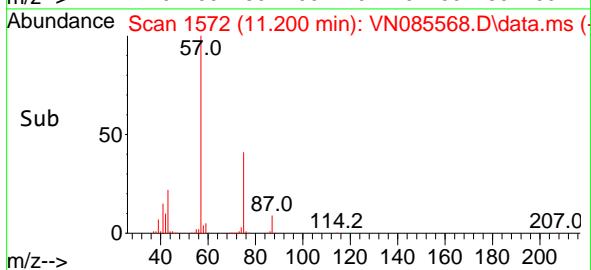
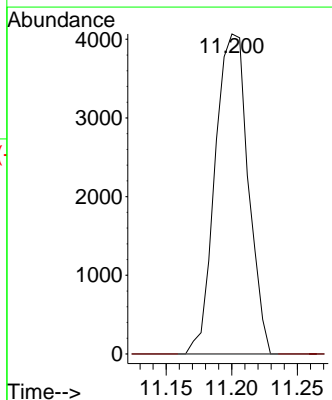
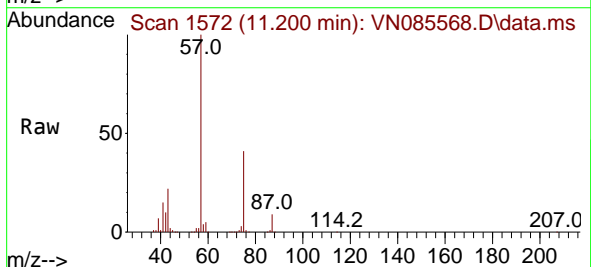
Ion	Ratio	Lower	Upper
69	100		
41	3406.4	54.6	82.0#
39	1600.1	32.4	48.6#

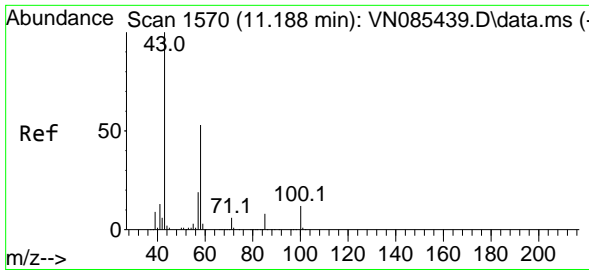


#57  
 1,3-Dichloropropane  
 Concen: 1.738 ug/l  
 RT: 11.200 min Scan# 1572  
 Delta R.T. 0.041 min  
 Lab File: VN085568.D  
 Acq: 29 Jan 2025 19:30

Tgt Ion: 76 Resp: 7139

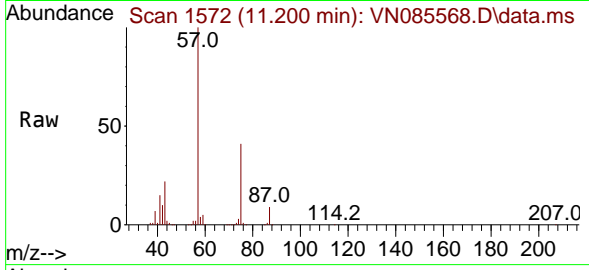
Ion	Ratio	Lower	Upper
76	100		
78	0.0	25.6	38.4#



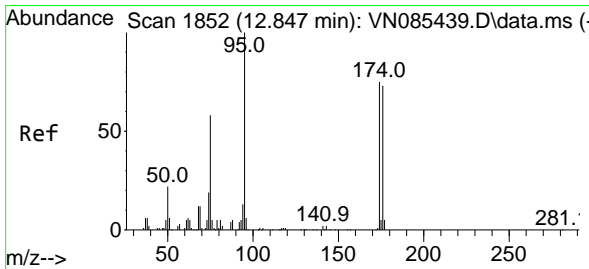
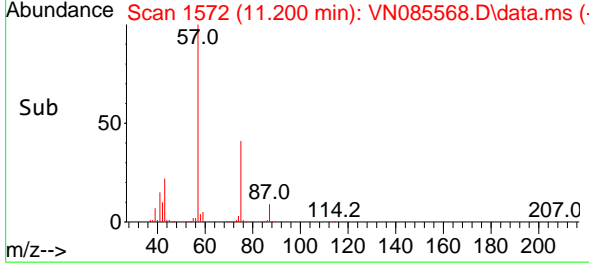
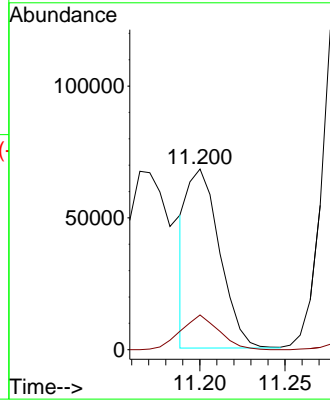


#59  
 2-Hexanone  
 Concen: 39.727 ug/l  
 RT: 11.200 min Scan# 111  
 Delta R.T. 0.012 min  
 Lab File: VN085568.D  
 Acq: 29 Jan 2025 19:30

Instrument :  
 MSVOA\_N  
 ClientSampled :

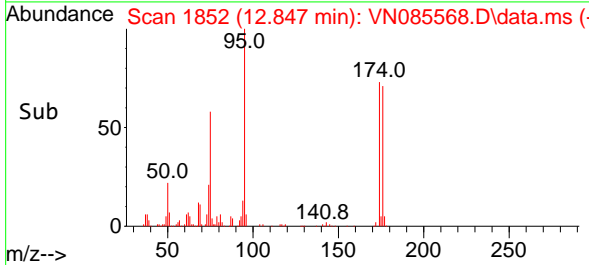
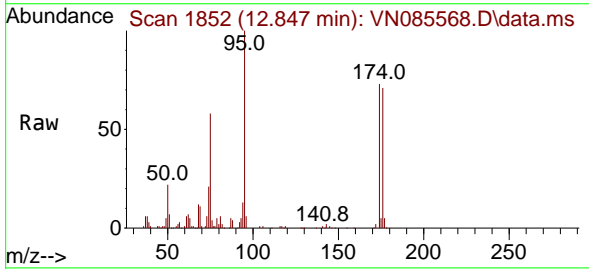
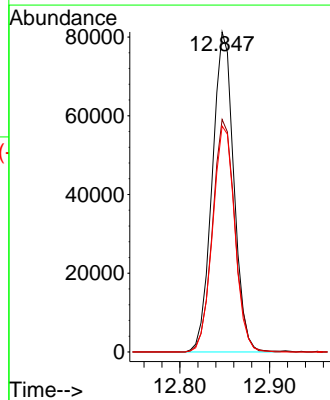


Tgt Ion: 43 Resp: 89934  
 Ion Ratio Lower Upper  
 43 100  
 58 22.7 26.2 78.6#

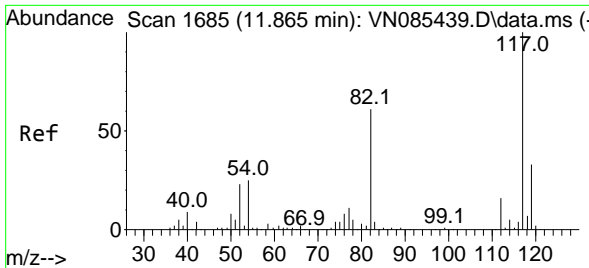


#62  
 4-Bromofluorobenzene  
 Concen: 45.779 ug/l  
 RT: 12.847 min Scan# 1852  
 Delta R.T. 0.000 min  
 Lab File: VN085568.D  
 Acq: 29 Jan 2025 19:30

Tgt Ion: 95 Resp: 135899  
 Ion Ratio Lower Upper  
 95 100  
 174 74.9 0.0 145.0  
 176 72.4 0.0 142.4

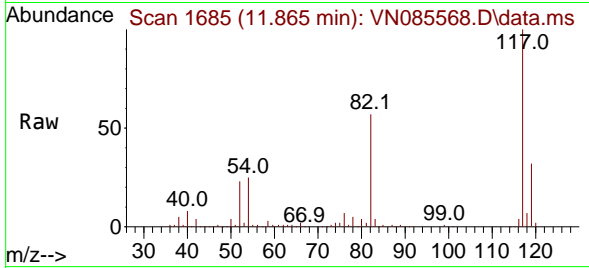




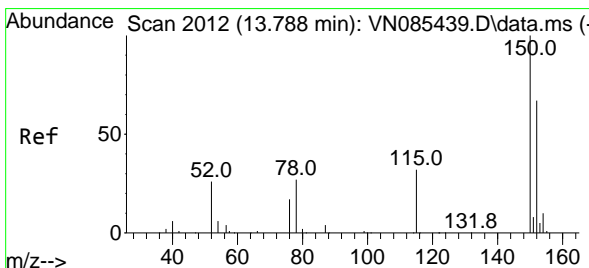
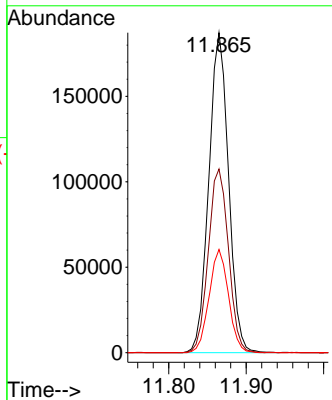
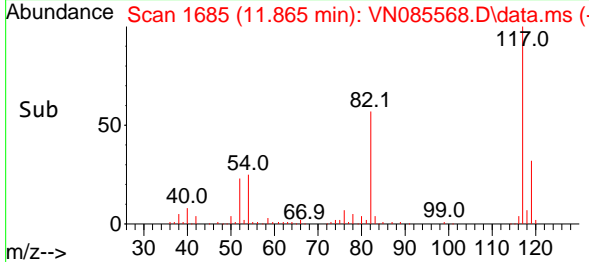


#63  
 Chlorobenzene-d5  
 Concen: 50.000 ug/l  
 RT: 11.865 min Scan# 117  
 Delta R.T. 0.000 min  
 Lab File: VN085568.D  
 Acq: 29 Jan 2025 19:30

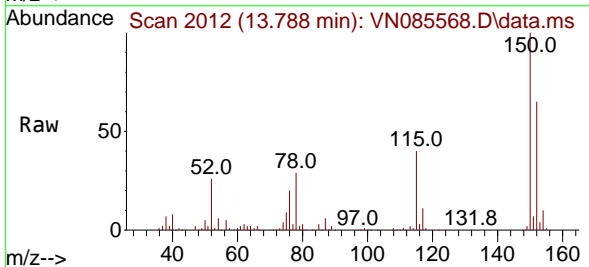
Instrument :  
 MSVOA\_N  
 ClientSampleId :



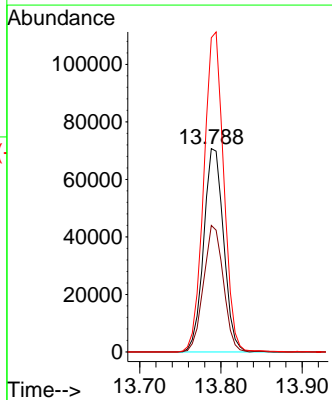
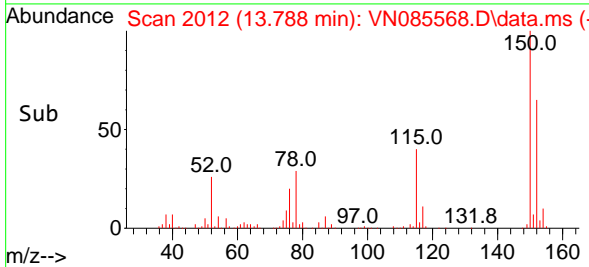
Tgt Ion:117 Resp: 330526  
 Ion Ratio Lower Upper  
 117 100  
 82 57.4 48.6 72.8  
 119 32.3 26.6 39.8

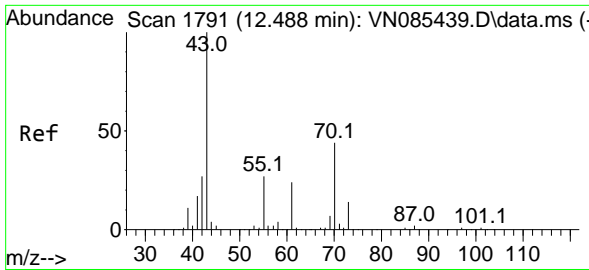


#72  
 1,4-Dichlorobenzene-d4  
 Concen: 50.000 ug/l  
 RT: 13.788 min Scan# 2012  
 Delta R.T. 0.000 min  
 Lab File: VN085568.D  
 Acq: 29 Jan 2025 19:30



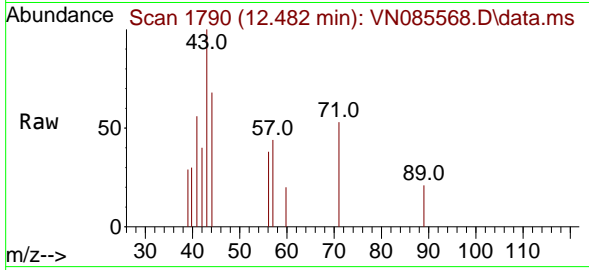
Tgt Ion:152 Resp: 120934  
 Ion Ratio Lower Upper  
 152 100  
 115 61.6 31.1 93.3  
 150 156.9 0.0 343.6





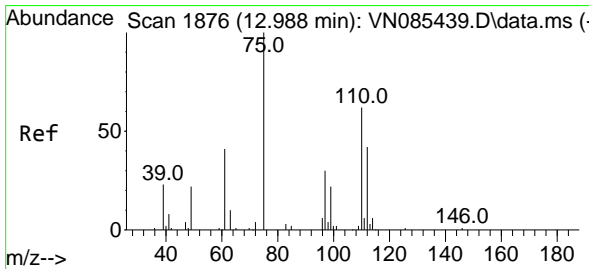
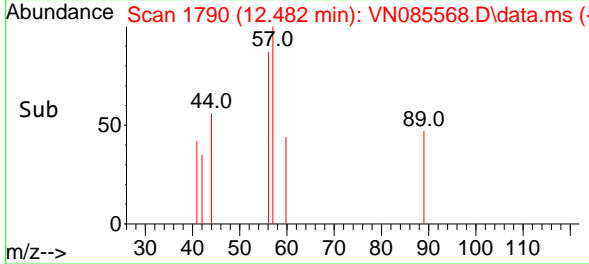
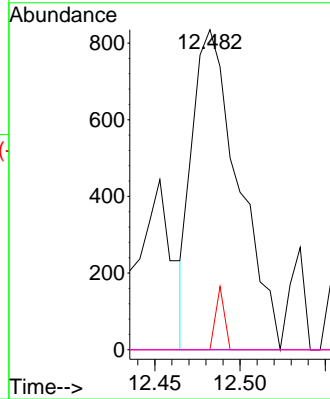
#74  
 N-amy1 acetate  
 Concen: 0.428 ug/l  
 RT: 12.482 min Scan# 1  
 Delta R.T. -0.006 min  
 Lab File: VN085568.D  
 Acq: 29 Jan 2025 19:30

Instrument :  
 MSVOA\_N  
 ClientSampleId :



Tgt Ion: 43 Resp: 1571

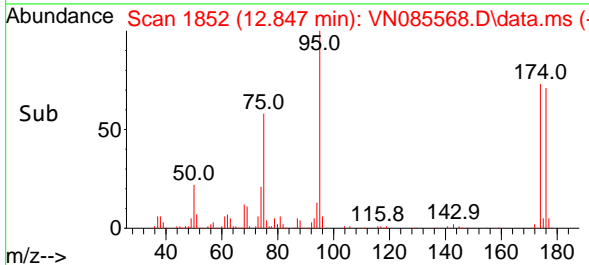
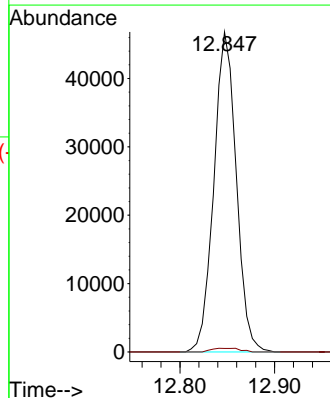
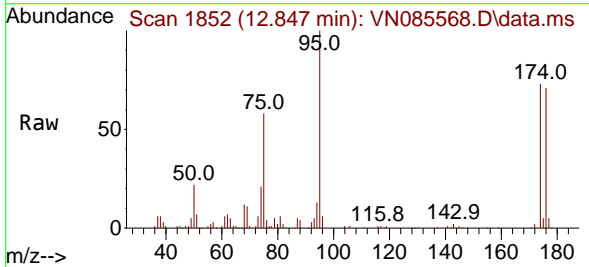
Ion	Ratio	Lower	Upper
43	100		
70	0.0	34.0	51.0#
55	3.7	21.4	32.2#
61	0.0	19.0	28.4#

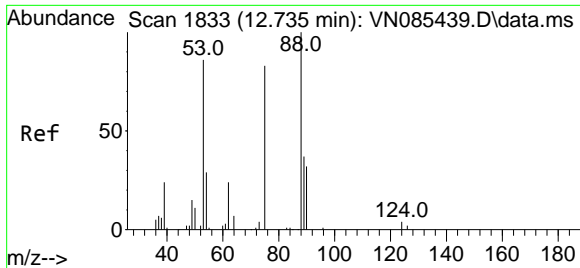


#76  
 1,2,3-Trichloropropane  
 Concen: 31.315 ug/l  
 RT: 12.847 min Scan# 1852  
 Delta R.T. -0.141 min  
 Lab File: VN085568.D  
 Acq: 29 Jan 2025 19:30

Tgt Ion: 75 Resp: 76973

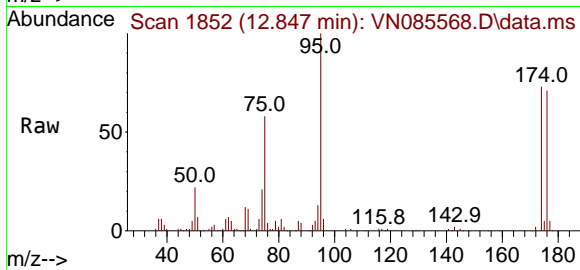
Ion	Ratio	Lower	Upper
75	100		
77	1.5	109.7	329.2#





#81  
 trans-1,4-Dichloro-2-butene  
 Concen: 84.725 ug/l  
 RT: 12.847 min Scan# 11  
 Delta R.T. 0.112 min  
 Lab File: VN085568.D  
 Acq: 29 Jan 2025 19:30

Instrument :  
 MSVOA\_N  
 ClientSampleId :



Tgt Ion: 75 Resp: 76973

Ion	Ratio	Lower	Upper
75	100		
53	0.1	95.6	143.4#
89	0.0	37.0	55.6#

