

Data Path : Z:\voasrv\HPCHEM1\MSVOA_N\Data\VN013023\
 Data File : VN076470.D
 Acq On : 30 Jan 2023 20:30
 Operator : JC\MD
 Sample : 01333-05
 Misc : 5.0mL/MSVOA_N/WATER
 ALS Vial : 25 Sample Multiplier: 1

Instrument :
 MSVOA_N
 ClientSampleId :
 MH-11

Quant Time: Jan 31 00:46:45 2023
 Quant Method : Z:\voasrv\HPCHEM1\MSVOA_N\methods\82N011623W.M
 Quant Title : SW846 8260
 QLast Update : Tue Jan 17 03:59:22 2023
 Response via : Initial Calibration

Compound	R.T.	QIon	Response	Conc	Units	Dev(Min)

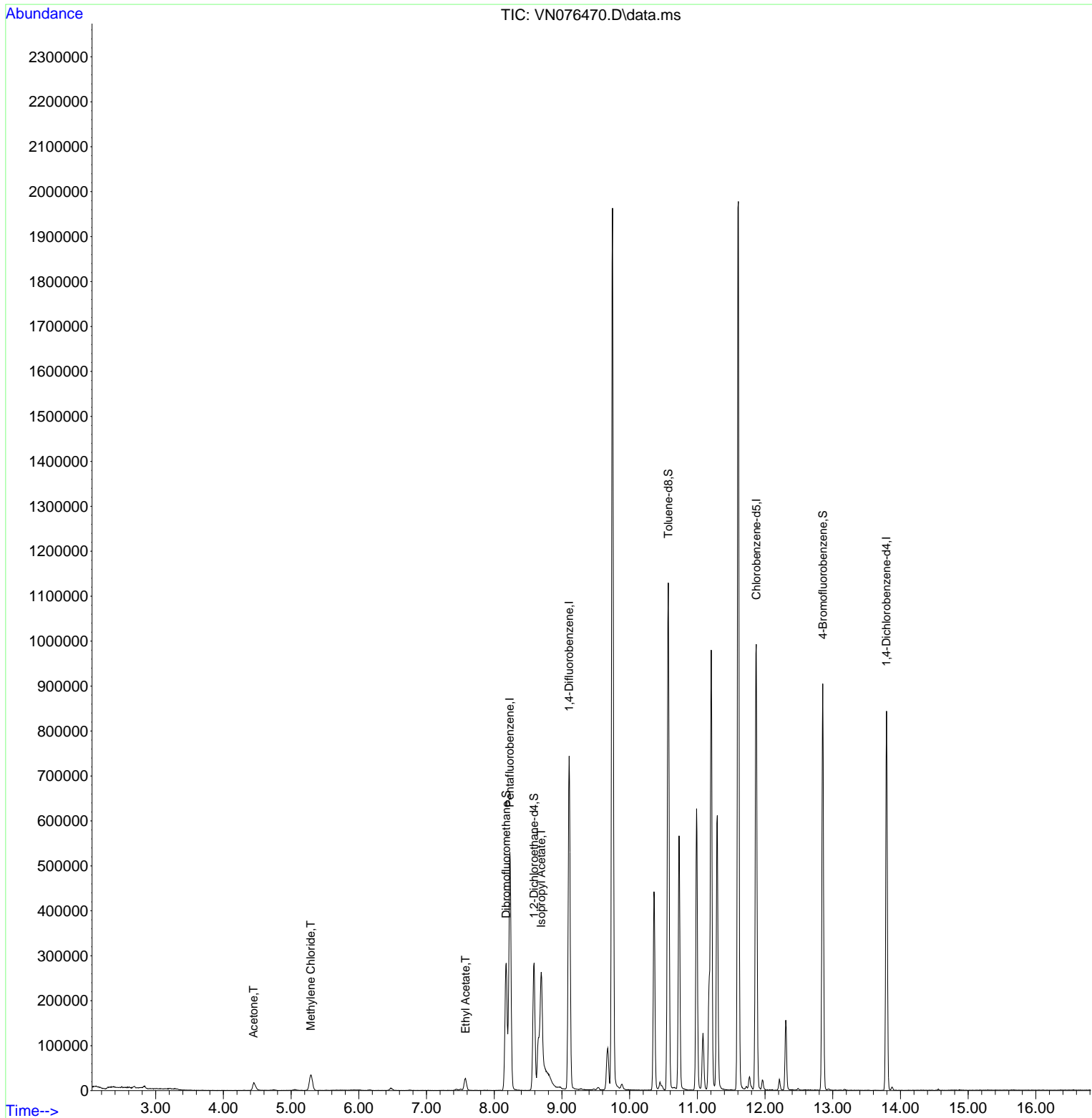
Internal Standards						
1) Pentafluorobenzene	8.230	168	386389	50.000	ug/l	0.00
34) 1,4-Difluorobenzene	9.106	114	665246	50.000	ug/l	0.00
63) Chlorobenzene-d5	11.871	117	595017	50.000	ug/l	0.00
72) 1,4-Dichlorobenzene-d4	13.794	152	229881	50.000	ug/l	0.00
System Monitoring Compounds						
33) 1,2-Dichloroethane-d4	8.588	65	239639	55.391	ug/l	0.00
Spiked Amount	50.000	Range	74 - 125	Recovery	=	110.780%
35) Dibromofluoromethane	8.177	113	201896	48.516	ug/l	0.00
Spiked Amount	50.000	Range	75 - 124	Recovery	=	97.040%
50) Toluene-d8	10.571	98	788418	51.301	ug/l	0.00
Spiked Amount	50.000	Range	86 - 113	Recovery	=	102.600%
62) 4-Bromofluorobenzene	12.853	95	312764	62.340	ug/l	0.00
Spiked Amount	50.000	Range	83 - 123	Recovery	=	124.680%#
Target Compounds						
					Qvalue	
16) Acetone	4.447	43	34277	24.649	ug/l	93
20) Methylene Chloride	5.289	84	29796	6.739	ug/l	90
37) Ethyl Acetate	7.577	43	41426	8.764	ug/l	98
43) Isopropyl Acetate	8.694	43	478048	61.957	ug/l #	69

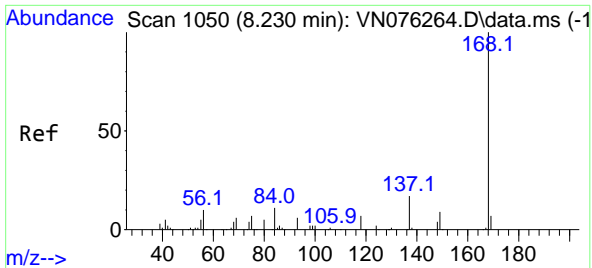
(#) = qualifier out of range (m) = manual integration (+) = signals summed

Data Path : Z:\voasrv\HPCHEM1\MSVOA_N\Data\VN013023\
 Data File : VN076470.D
 Acq On : 30 Jan 2023 20:30
 Operator : JC\MD
 Sample : 01333-05
 Misc : 5.0mL/MSVOA_N/WATER
 ALS Vial : 25 Sample Multiplier: 1

Instrument :
 MSVOA_N
ClientSampleId :
 MH-11

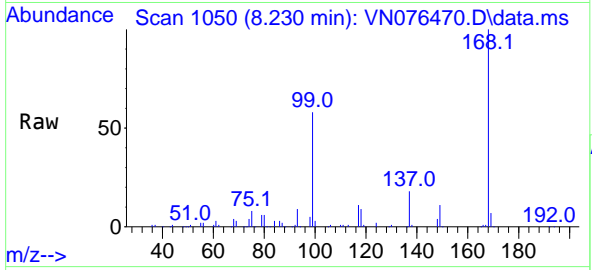
Quant Time: Jan 31 00:46:45 2023
 Quant Method : Z:\voasrv\HPCHEM1\MSVOA_N\methods\82N011623W.M
 Quant Title : SW846 8260
 QLast Update : Tue Jan 17 03:59:22 2023
 Response via : Initial Calibration



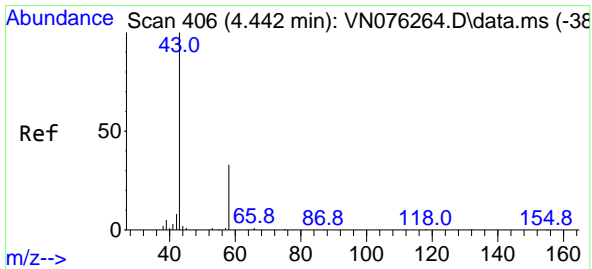
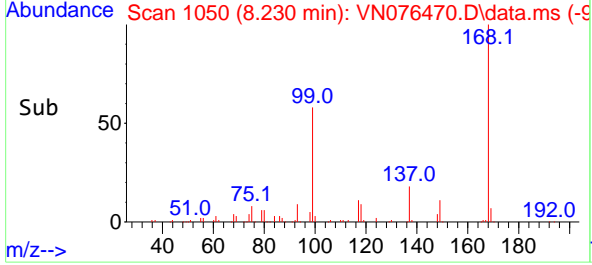
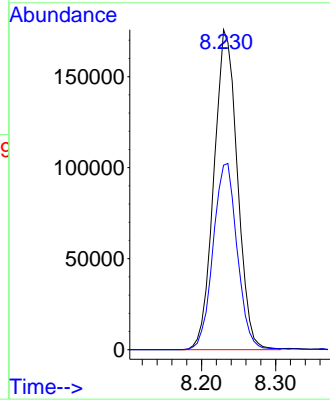


#1
 Pentafluorobenzene
 Concen: 50.000 ug/l
 RT: 8.230 min Scan# 1050
 Delta R.T. -0.000 min
 Lab File: VN076470.D
 Acq: 30 Jan 2023 20:30

Instrument : MSVOA_N
 ClientSampleId : MH-11

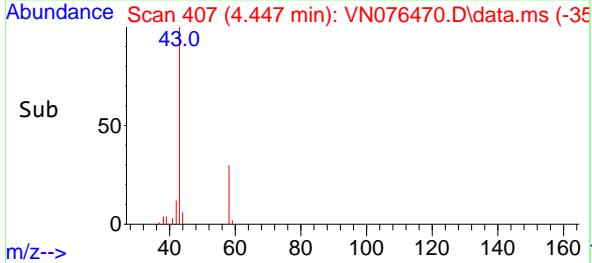
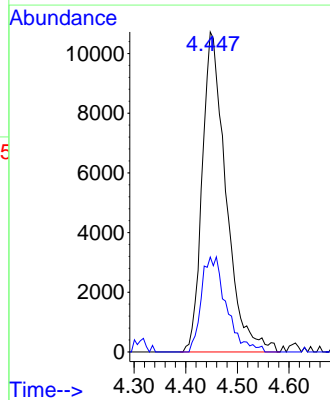
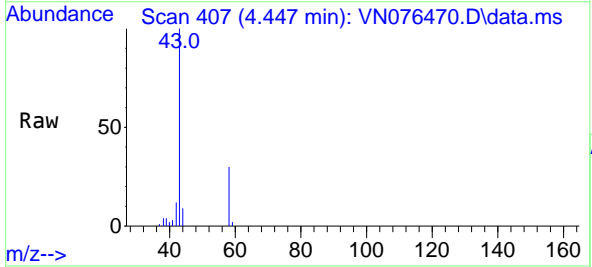


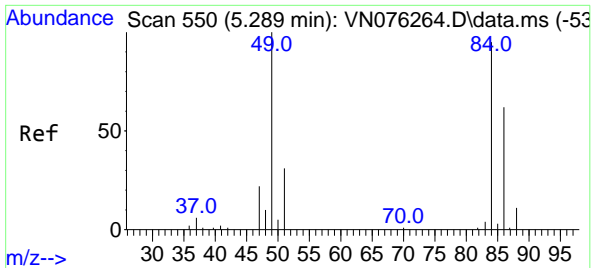
Tgt Ion:168 Resp: 386389
 Ion Ratio Lower Upper
 168 100
 99 57.6 41.6 62.4



#16
 Acetone
 Concen: 24.649 ug/l
 RT: 4.447 min Scan# 407
 Delta R.T. 0.005 min
 Lab File: VN076470.D
 Acq: 30 Jan 2023 20:30

Tgt Ion: 43 Resp: 34277
 Ion Ratio Lower Upper
 43 100
 58 29.7 26.7 40.1



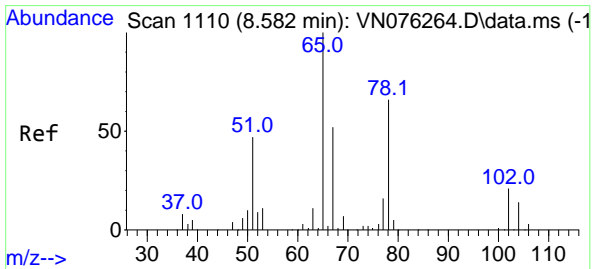
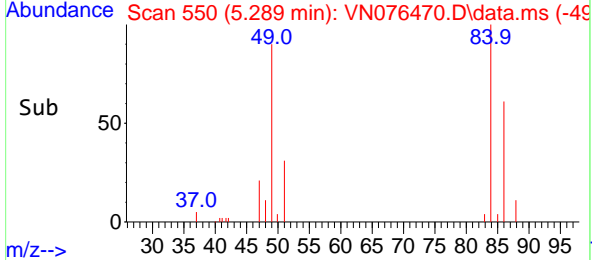
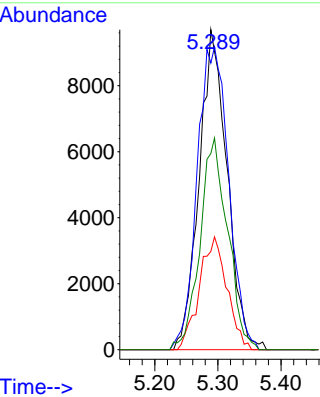
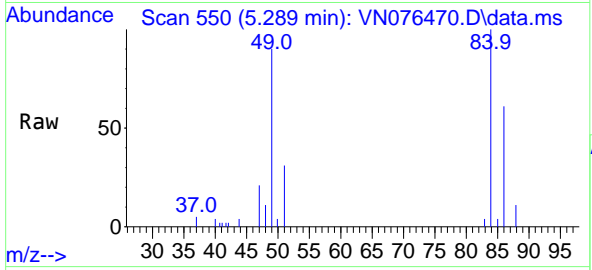


#20
 Methylene Chloride
 Concen: 6.739 ug/l
 RT: 5.289 min Scan# 511
 Delta R.T. -0.000 min
 Lab File: VN076470.D
 Acq: 30 Jan 2023 20:30

Instrument : MSVOA_N
 ClientSampleId : MH-11

Tgt Ion: 84 Resp: 29796

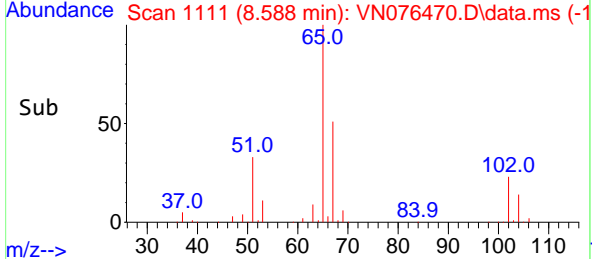
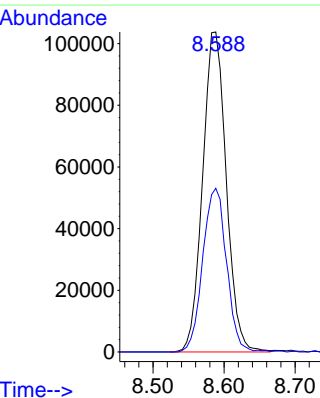
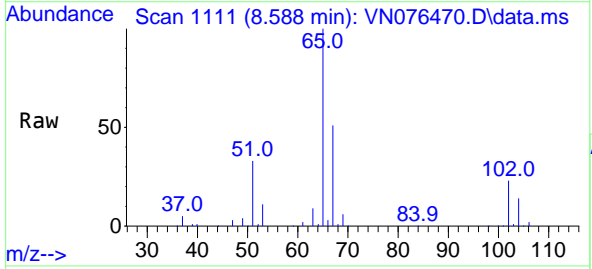
Ion	Ratio	Lower	Upper
84	100		
49	89.6	84.5	126.7
51	30.7	26.0	39.0
86	61.3	52.0	78.0

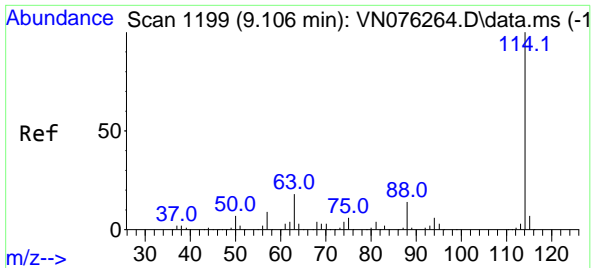


#33
 1,2-Dichloroethane-d4
 Concen: 55.391 ug/l
 RT: 8.588 min Scan# 1111
 Delta R.T. 0.006 min
 Lab File: VN076470.D
 Acq: 30 Jan 2023 20:30

Tgt Ion: 65 Resp: 239639

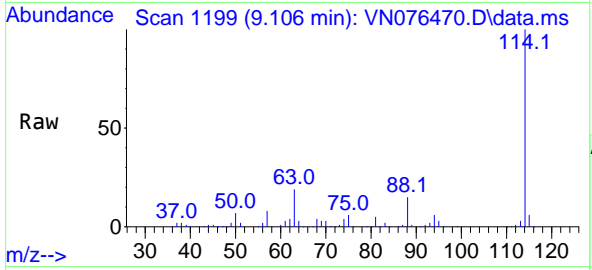
Ion	Ratio	Lower	Upper
65	100		
67	51.5	0.0	104.6



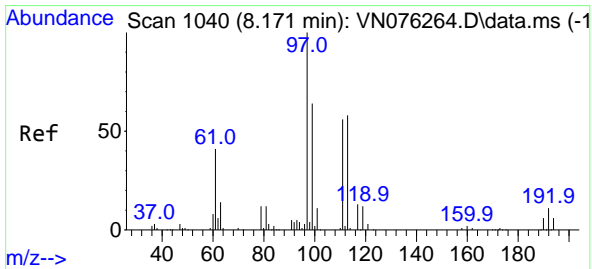
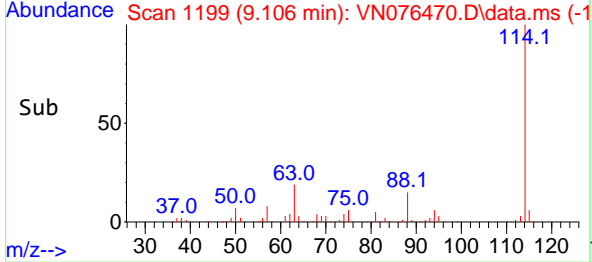
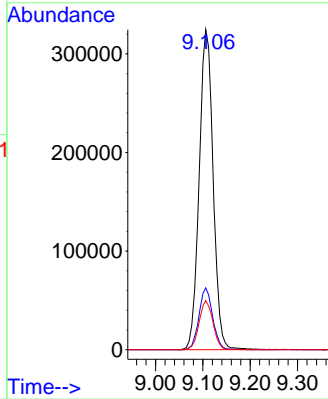


#34
 1,4-Difluorobenzene
 Concen: 50.000 ug/l
 RT: 9.106 min Scan# 11199
 Delta R.T. 0.000 min
 Lab File: VN076470.D
 Acq: 30 Jan 2023 20:30

Instrument : MSVOA_N
 ClientSampleId : MH-11

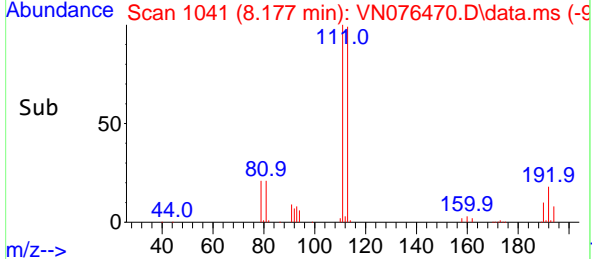
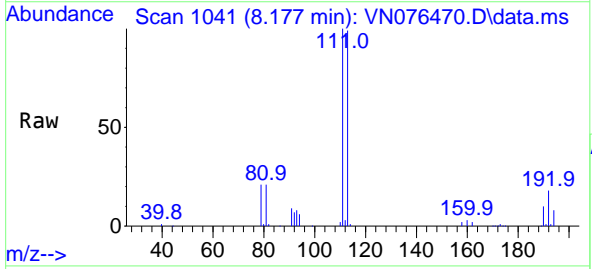
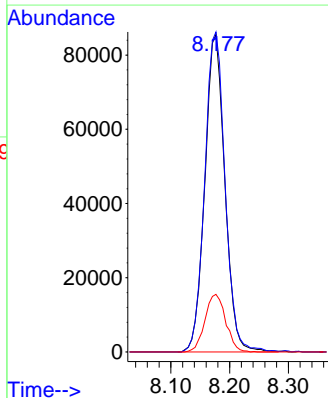


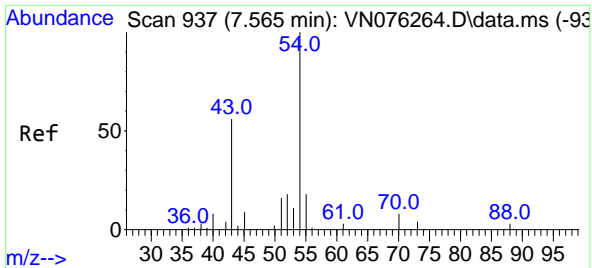
Tgt Ion:114 Resp: 665246
 Ion Ratio Lower Upper
 114 100
 63 19.4 0.0 35.8
 88 15.3 0.0 28.0



#35
 Dibromofluoromethane
 Concen: 48.516 ug/l
 RT: 8.177 min Scan# 1041
 Delta R.T. 0.006 min
 Lab File: VN076470.D
 Acq: 30 Jan 2023 20:30

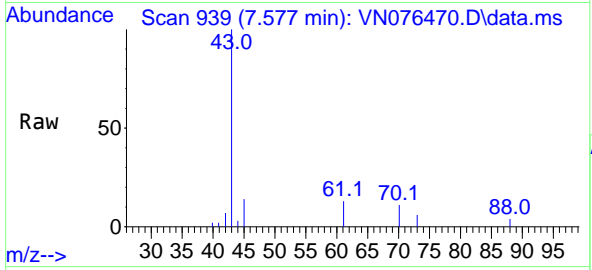
Tgt Ion:113 Resp: 201896
 Ion Ratio Lower Upper
 113 100
 111 102.7 82.7 124.1
 192 18.8 15.6 23.4





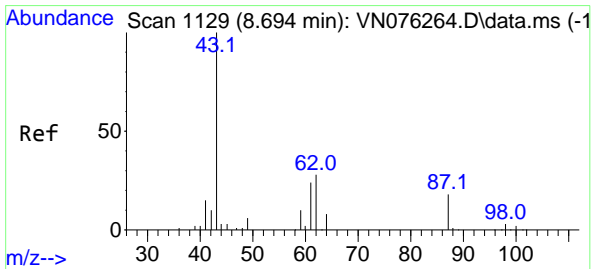
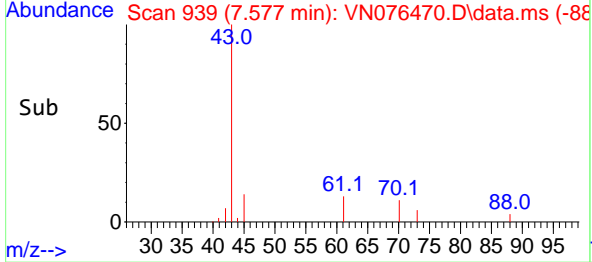
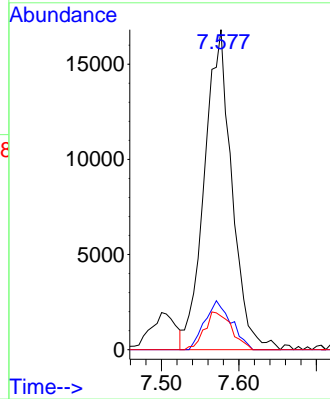
#37
 Ethyl Acetate
 Concen: 8.764 ug/l
 RT: 7.577 min Scan# 911
 Delta R.T. 0.012 min
 Lab File: VN076470.D
 Acq: 30 Jan 2023 20:30

Instrument : MSVOA_N
 ClientSampleId : MH-11

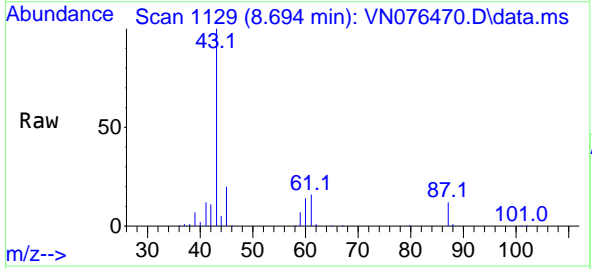


Tgt Ion: 43 Resp: 41426

Ion	Ratio	Lower	Upper
43	100		
61	14.8	11.1	16.7
70	11.5	10.0	15.0

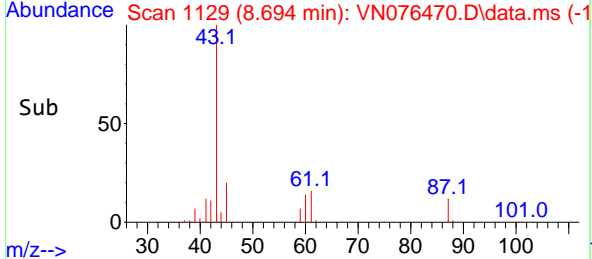
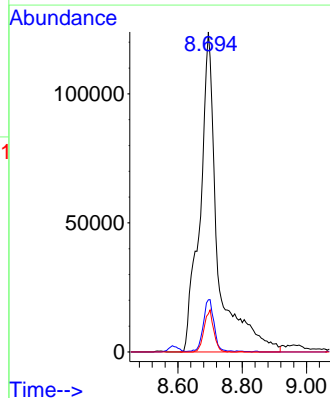


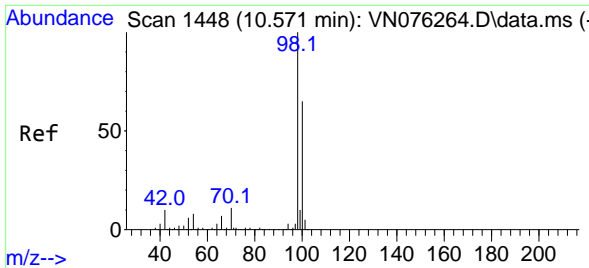
#43
 Isopropyl Acetate
 Concen: 61.957 ug/l
 RT: 8.694 min Scan# 1129
 Delta R.T. 0.000 min
 Lab File: VN076470.D
 Acq: 30 Jan 2023 20:30



Tgt Ion: 43 Resp: 478048

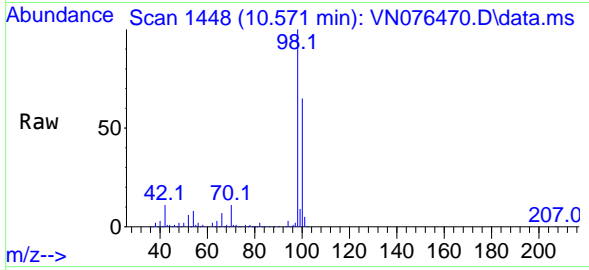
Ion	Ratio	Lower	Upper
43	100		
61	10.0	23.5	35.3#
87	7.1	13.8	20.6#



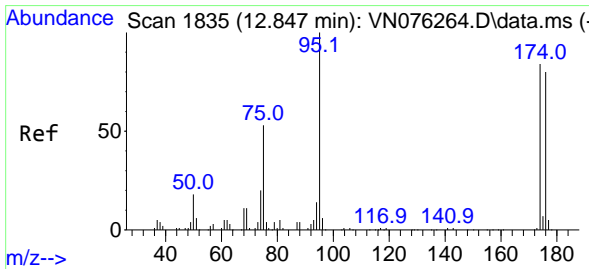
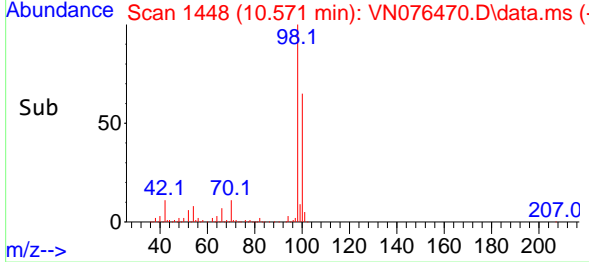
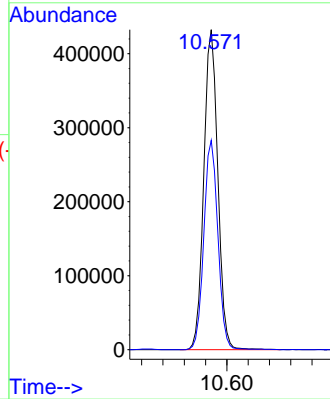


#50
 Toluene-d8
 Concen: 51.301 ug/l
 RT: 10.571 min Scan# 1448
 Delta R.T. -0.000 min
 Lab File: VN076470.D
 Acq: 30 Jan 2023 20:30

Instrument : MSVOA_N
 ClientSampleId : MH-11

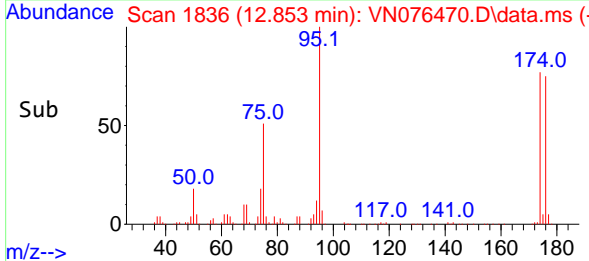
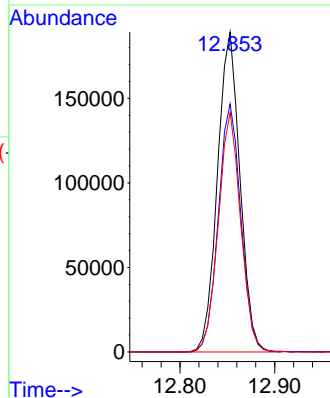
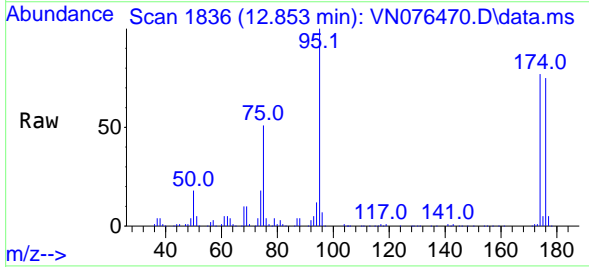


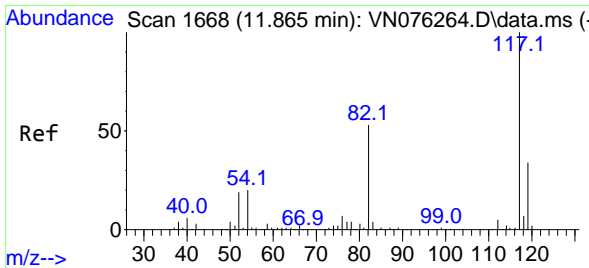
Tgt Ion: 98 Resp: 788418
 Ion Ratio Lower Upper
 98 100
 100 65.6 52.2 78.4



#62
 4-Bromofluorobenzene
 Concen: 62.340 ug/l
 RT: 12.853 min Scan# 1836
 Delta R.T. 0.006 min
 Lab File: VN076470.D
 Acq: 30 Jan 2023 20:30

Tgt Ion: 95 Resp: 312764
 Ion Ratio Lower Upper
 95 100
 174 77.8 0.0 174.6
 176 74.0 0.0 167.8

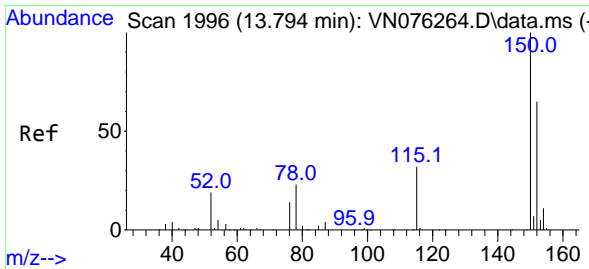
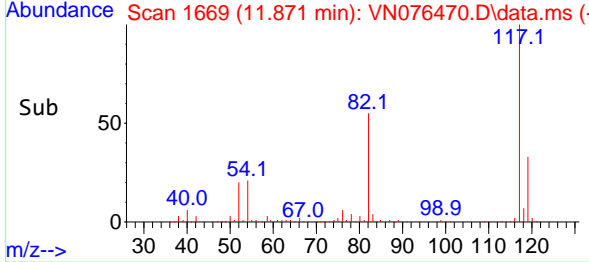
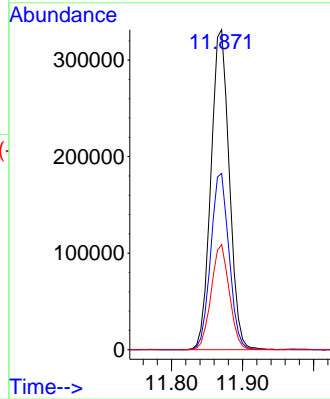
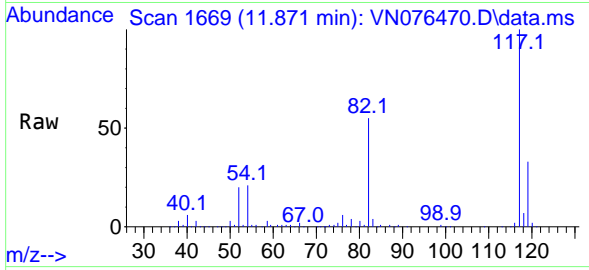




#63
 Chlorobenzene-d5
 Concen: 50.000 ug/l
 RT: 11.871 min Scan# 11
 Delta R.T. 0.006 min
 Lab File: VN076470.D
 Acq: 30 Jan 2023 20:30

Instrument :
 MSVOA_N
 ClientSampleId :
 MH-11

Tgt Ion:117 Resp: 595017
 Ion Ratio Lower Upper
 117 100
 82 55.1 42.2 63.2
 119 32.8 26.9 40.3



#72
 1,4-Dichlorobenzene-d4
 Concen: 50.000 ug/l
 RT: 13.794 min Scan# 1996
 Delta R.T. -0.000 min
 Lab File: VN076470.D
 Acq: 30 Jan 2023 20:30

Tgt Ion:152 Resp: 229881
 Ion Ratio Lower Upper
 152 100
 115 60.2 29.6 88.9
 150 157.1 0.0 351.4

