

Data Path : Z:\voasrv\HPCHEM1\MSVOA_N\Data\VN013122\
 Data File : VN070859.D
 Acq On : 31 Jan 2022 18:15
 Operator : JC/MD
 Sample : N1313-02
 Misc : 5.00mL/MSVOA_N/WATER
 ALS Vial : 16 Sample Multiplier: 1

Instrument :
 MSVOA_N
 ClientSampleId :
 17B-MISC-A

Quant Time: Feb 01 05:01:37 2022
 Quant Method : Z:\voasrv\HPCHEM1\MSVOA_N\methods\82N011822W.M
 Quant Title : SW846 8260
 QLast Update : Tue Jan 18 13:32:07 2022
 Response via : Initial Calibration

Compound	R.T.	QIon	Response	Conc	Units	Dev(Min)

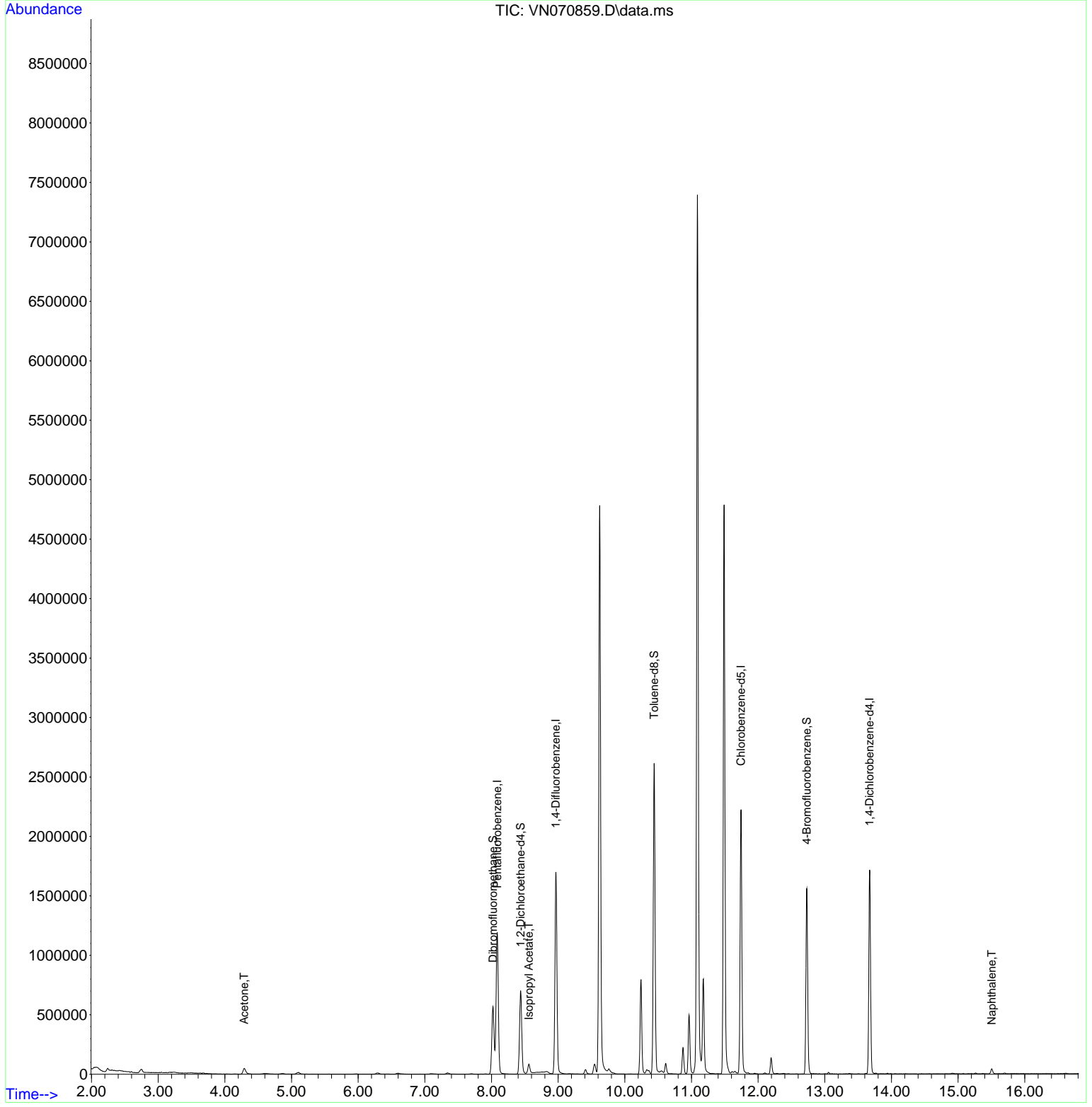
Internal Standards						
1) Pentafluorobenzene	8.086	168	912264	50.000	ug/l	0.00
34) 1,4-Difluorobenzene	8.965	114	1432027	50.000	ug/l	0.00
63) Chlorobenzene-d5	11.744	117	1289439	50.000	ug/l	0.00
72) 1,4-Dichlorobenzene-d4	13.672	152	471669	50.000	ug/l	0.00
System Monitoring Compounds						
33) 1,2-Dichloroethane-d4	8.437	65	611565	46.777	ug/l	0.00
Spiked Amount	50.000	Range	61 - 141	Recovery	=	93.560%
35) Dibromofluoromethane	8.021	113	421920	47.498	ug/l	0.00
Spiked Amount	50.000	Range	69 - 133	Recovery	=	95.000%
50) Toluene-d8	10.440	98	1794293	47.948	ug/l	0.00
Spiked Amount	50.000	Range	65 - 126	Recovery	=	95.900%
62) 4-Bromofluorobenzene	12.731	95	584538	43.835	ug/l	0.00
Spiked Amount	50.000	Range	58 - 135	Recovery	=	87.680%
Target Compounds						
					Qvalue	
16) Acetone	4.291	43	89656	9.880	ug/l	100
43) Isopropyl Acetate	8.560	43	99692	3.288	ug/l #	88
95) Naphthalene	15.504	128	37890	6.344	ug/l	99

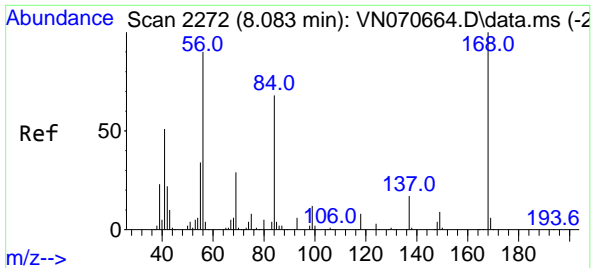
(#) = qualifier out of range (m) = manual integration (+) = signals summed

Data Path : Z:\voasrv\HPCHEM1\MSVOA_N\Data\VN013122\
 Data File : VN070859.D
 Acq On : 31 Jan 2022 18:15
 Operator : JC/MD
 Sample : N1313-02
 Misc : 5.00mL/MSVOA_N/WATER
 ALS Vial : 16 Sample Multiplier: 1

Instrument :
 MSVOA_N
 ClientSampleId :
 17B-MISC-A

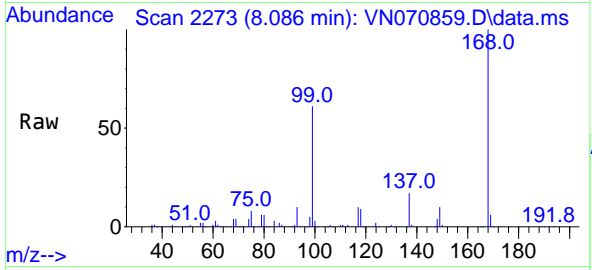
Quant Time: Feb 01 05:01:37 2022
 Quant Method : Z:\voasrv\HPCHEM1\MSVOA_N\methods\82N011822W.M
 Quant Title : SW846 8260
 QLast Update : Tue Jan 18 13:32:07 2022
 Response via : Initial Calibration



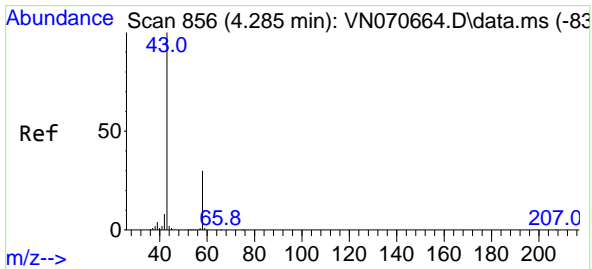
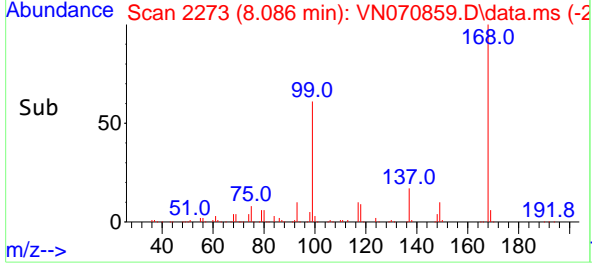
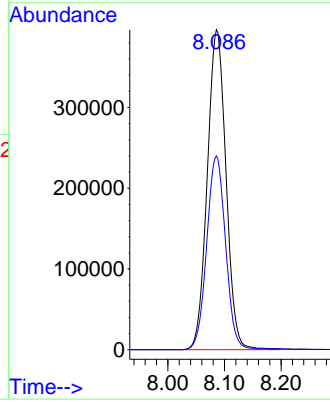


#1
 Pentafluorobenzene
 Concen: 50.000 ug/l
 RT: 8.086 min Scan# 21
 Delta R.T. 0.003 min
 Lab File: VN070859.D
 Acq: 31 Jan 2022 18:15

Instrument :
 MSVOA_N
 ClientSampleId :
 17B-MISC-A

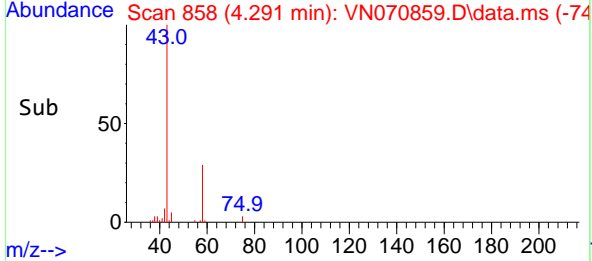
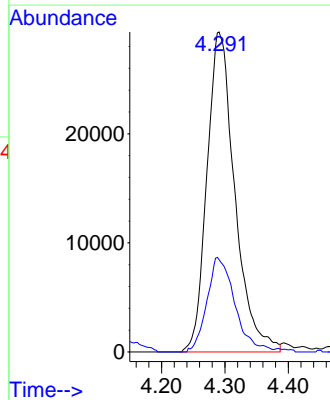
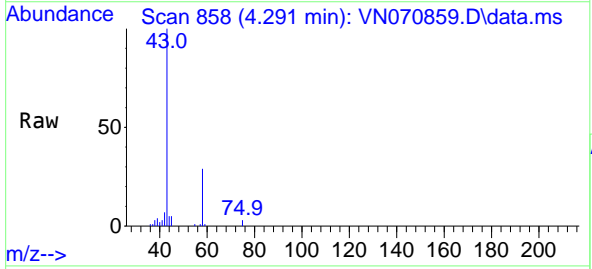


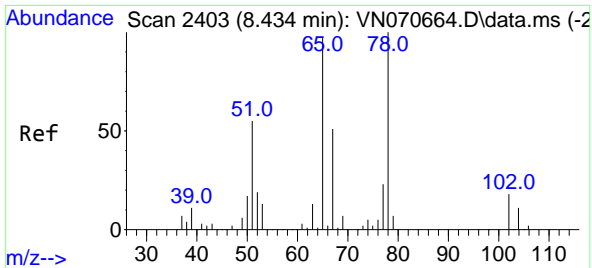
Tgt Ion:168 Resp: 912264
 Ion Ratio Lower Upper
 168 100
 99 60.6 41.3 61.9



#16
 Acetone
 Concen: 9.880 ug/l
 RT: 4.291 min Scan# 858
 Delta R.T. 0.006 min
 Lab File: VN070859.D
 Acq: 31 Jan 2022 18:15

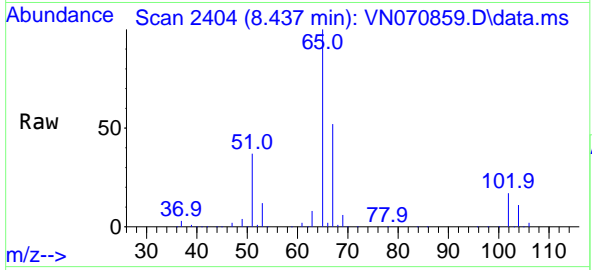
Tgt Ion: 43 Resp: 89656
 Ion Ratio Lower Upper
 43 100
 58 28.9 23.1 34.7



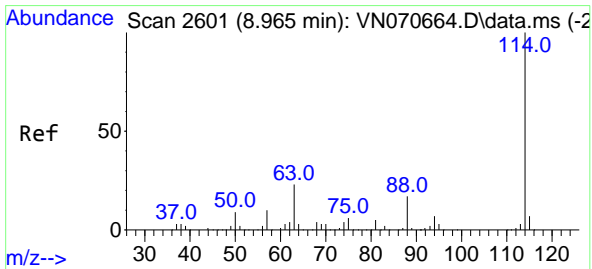
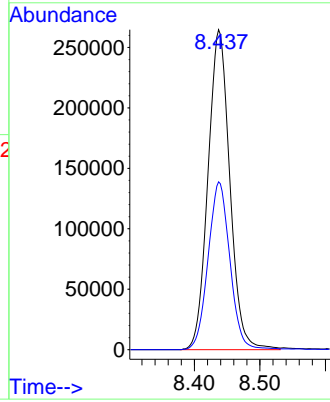
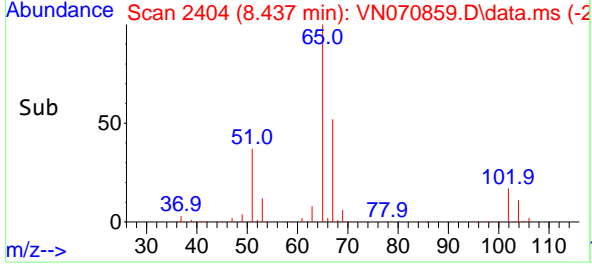


#33
 1,2-Dichloroethane-d4
 Concen: 46.777 ug/l
 RT: 8.437 min Scan# 2403
 Delta R.T. 0.003 min
 Lab File: VN070859.D
 Acq: 31 Jan 2022 18:15

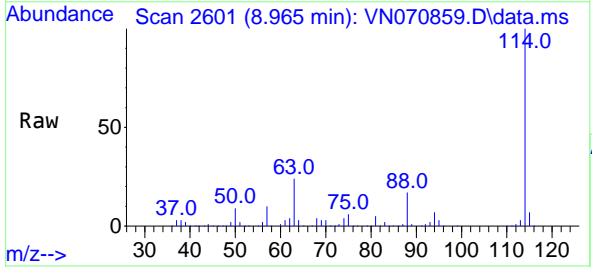
Instrument : MSVOA_N
 ClientSampleId : 17B-MISC-A



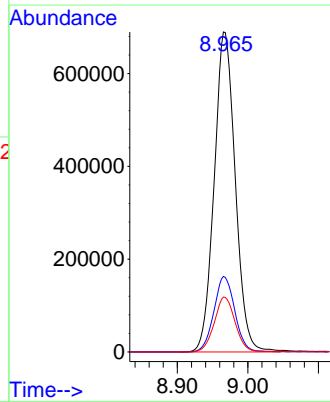
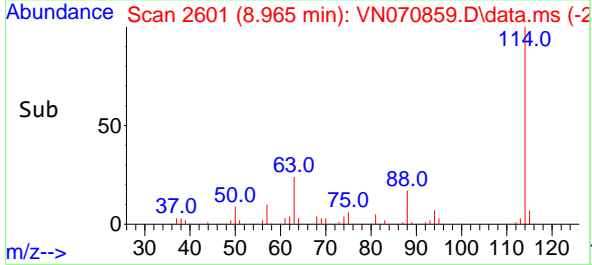
Tgt Ion: 65 Resp: 611565
 Ion Ratio Lower Upper
 65 100
 67 52.4 0.0 103.0

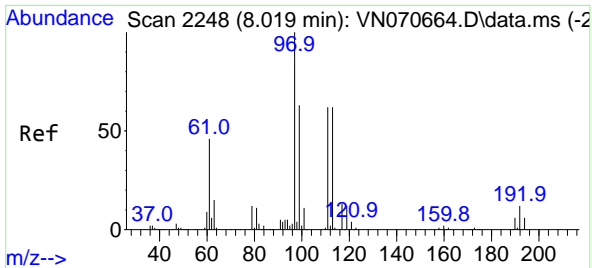


#34
 1,4-Difluorobenzene
 Concen: 50.000 ug/l
 RT: 8.965 min Scan# 2601
 Delta R.T. 0.000 min
 Lab File: VN070859.D
 Acq: 31 Jan 2022 18:15



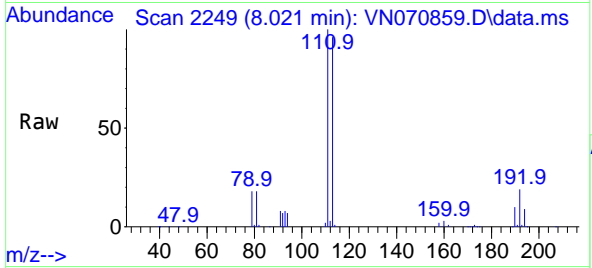
Tgt Ion: 114 Resp: 1432027
 Ion Ratio Lower Upper
 114 100
 63 23.6 0.0 37.8
 88 17.2 0.0 27.4



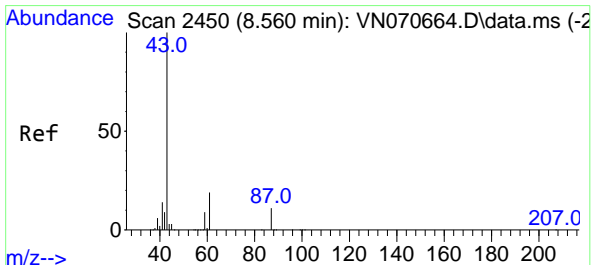
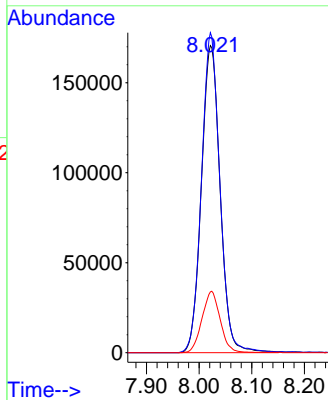
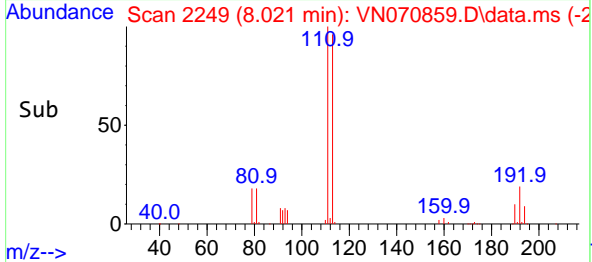


#35
 Dibromofluoromethane
 Concen: 47.498 ug/l
 RT: 8.021 min Scan# 21
 Delta R.T. 0.002 min
 Lab File: VN070859.D
 Acq: 31 Jan 2022 18:15

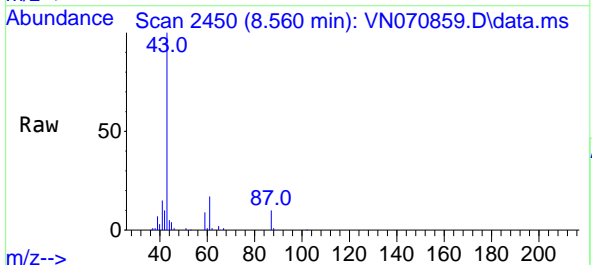
Instrument :
 MSVOA_N
 ClientSampleId :
 17B-MISC-A



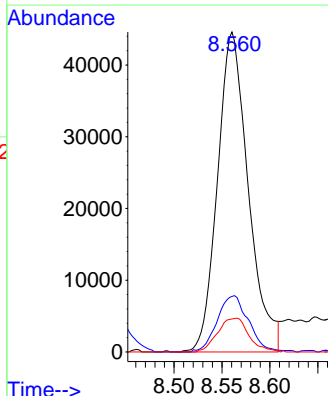
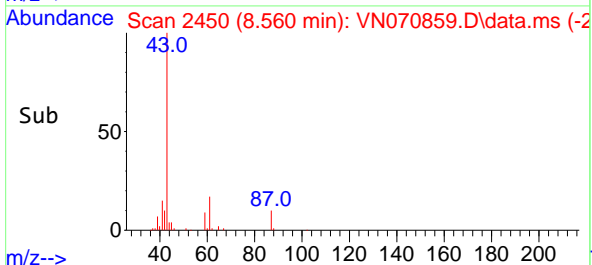
Tgt Ion:113 Resp: 421920
 Ion Ratio Lower Upper
 113 100
 111 102.0 82.2 123.2
 192 19.4 16.9 25.3

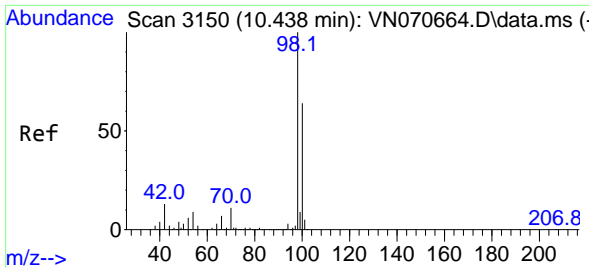


#43
 Isopropyl Acetate
 Concen: 3.288 ug/l
 RT: 8.560 min Scan# 2450
 Delta R.T. 0.000 min
 Lab File: VN070859.D
 Acq: 31 Jan 2022 18:15



Tgt Ion: 43 Resp: 99692
 Ion Ratio Lower Upper
 43 100
 61 18.0 20.4 30.6#
 87 10.7 11.2 16.8#

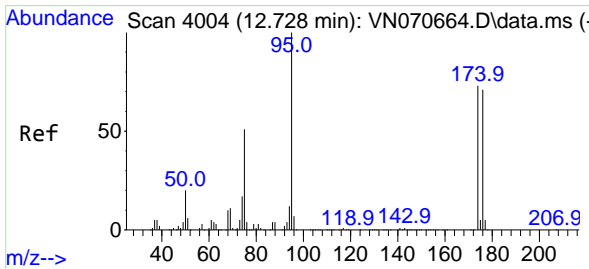
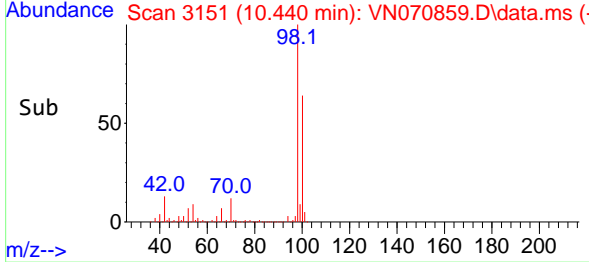
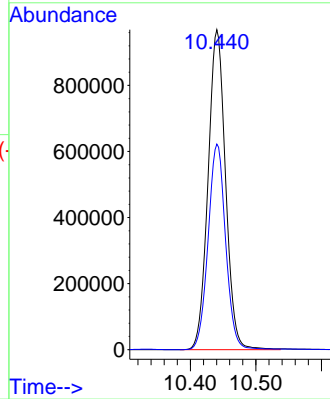
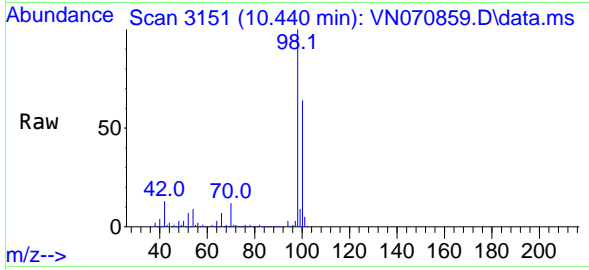




#50
 Toluene-d8
 Concen: 47.948 ug/l
 RT: 10.440 min Scan# 3150
 Delta R.T. 0.002 min
 Lab File: VN070859.D
 Acq: 31 Jan 2022 18:15

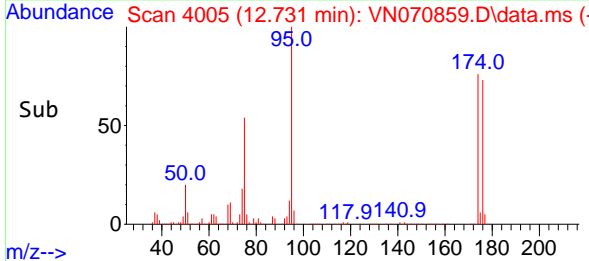
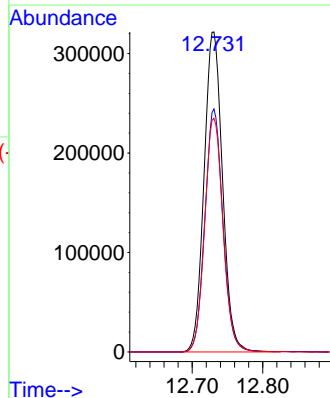
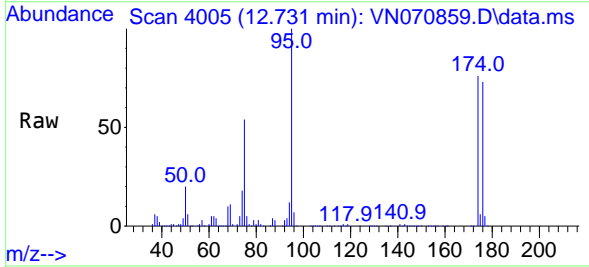
Instrument : MSVOA_N
 ClientSampleId : 17B-MISC-A

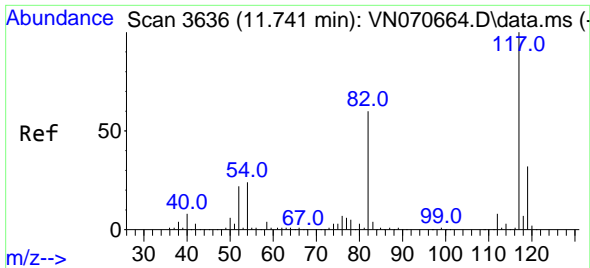
Tgt Ion: 98 Resp: 1794293
 Ion Ratio Lower Upper
 98 100
 100 64.4 50.4 75.6



#62
 4-Bromofluorobenzene
 Concen: 43.835 ug/l
 RT: 12.731 min Scan# 4005
 Delta R.T. 0.003 min
 Lab File: VN070859.D
 Acq: 31 Jan 2022 18:15

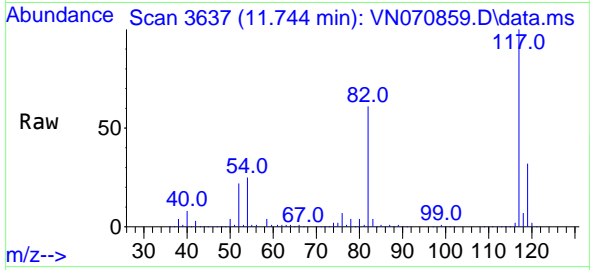
Tgt Ion: 95 Resp: 584538
 Ion Ratio Lower Upper
 95 100
 174 74.5 0.0 187.2
 176 72.6 0.0 181.4



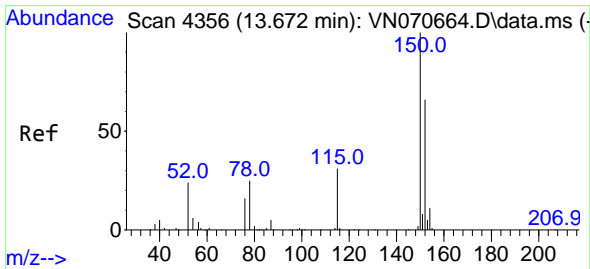
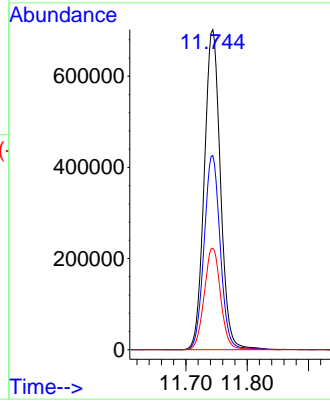
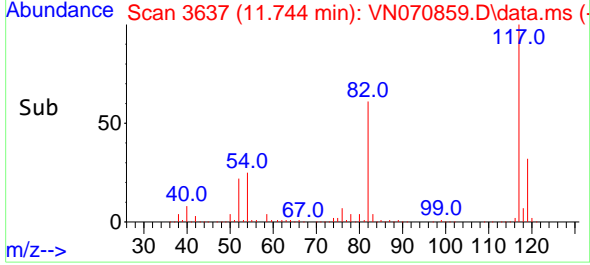


#63
 Chlorobenzene-d5
 Concen: 50.000 ug/l
 RT: 11.744 min Scan# 30
 Delta R.T. 0.003 min
 Lab File: VN070859.D
 Acq: 31 Jan 2022 18:15

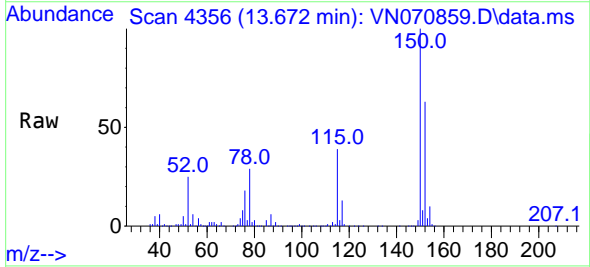
Instrument :
 MSVOA_N
 ClientSampleId :
 17B-MISC-A



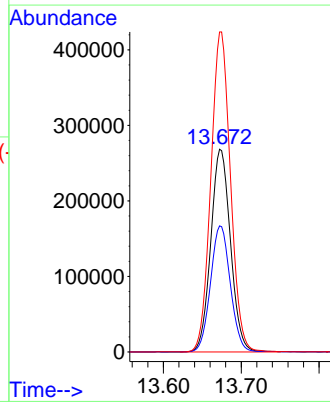
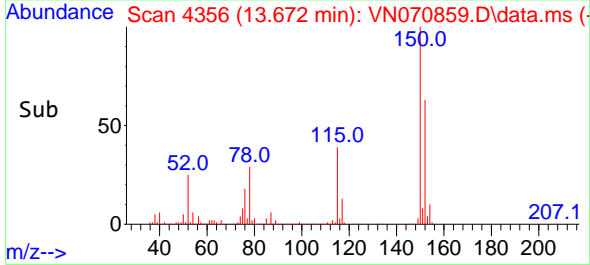
Tgt Ion:117 Resp: 1289439
 Ion Ratio Lower Upper
 117 100
 82 60.6 42.4 63.6
 119 31.7 25.4 38.2

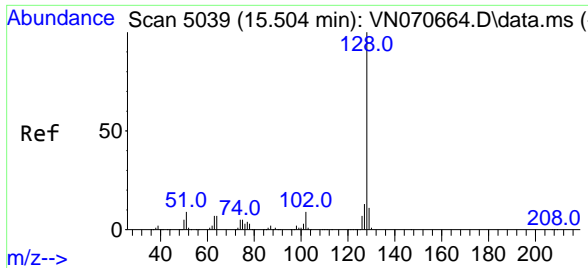


#72
 1,4-Dichlorobenzene-d4
 Concen: 50.000 ug/l
 RT: 13.672 min Scan# 4356
 Delta R.T. 0.000 min
 Lab File: VN070859.D
 Acq: 31 Jan 2022 18:15



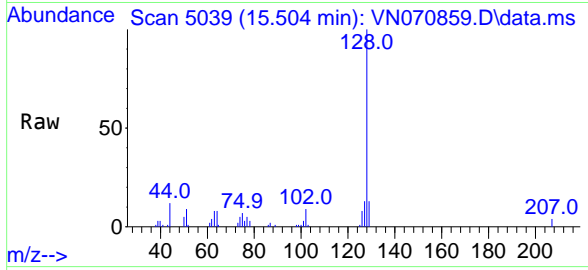
Tgt Ion:152 Resp: 471669
 Ion Ratio Lower Upper
 152 100
 115 62.7 27.5 82.5
 150 157.3 0.0 344.4





#95
 Naphthalene
 Concen: 6.344 ug/l
 RT: 15.504 min Scan# 50
 Delta R.T. -0.000 min
 Lab File: VN070859.D
 Acq: 31 Jan 2022 18:15

Instrument :
 MSVOA_N
 ClientSampleId :
 17B-MISC-A



Tgt Ion:128 Resp: 37890

Ion	Ratio	Lower	Upper
128	100		
127	13.3	10.5	15.7
129	11.6	8.7	13.1

