

Data Path : Z:\voasrv\HPCHEM1\MSVOA\_N\Data\VN013122\  
 Data File : VN070863.D  
 Acq On : 31 Jan 2022 19:56  
 Operator : JC/MD  
 Sample : N1325-08  
 Misc : 5.00mL/MSVOA\_N/WATER  
 ALS Vial : 20 Sample Multiplier: 1

Instrument :  
 MSVOA\_N  
 ClientSampleId :  
 TES-3

Quant Time: Feb 01 05:02:55 2022  
 Quant Method : Z:\voasrv\HPCHEM1\MSVOA\_N\methods\82N011822W.M  
 Quant Title : SW846 8260  
 QLast Update : Tue Jan 18 13:32:07 2022  
 Response via : Initial Calibration

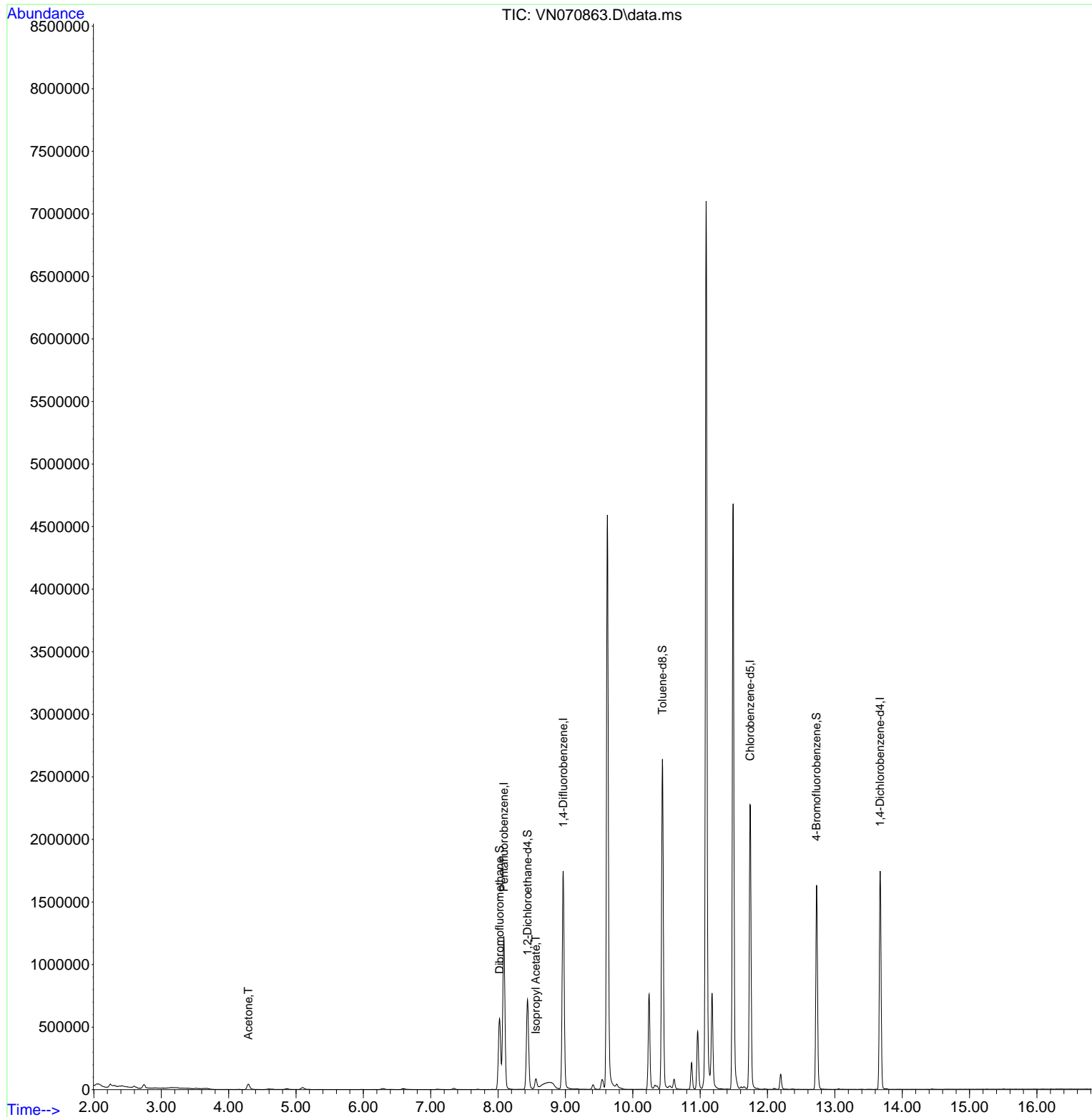
| Compound                    | R.T.   | QIon  | Response | Conc     | Units  | Dev(Min) |
|-----------------------------|--------|-------|----------|----------|--------|----------|
| -----                       |        |       |          |          |        |          |
| Internal Standards          |        |       |          |          |        |          |
| 1) Pentafluorobenzene       | 8.086  | 168   | 911839   | 50.000   | ug/l   | # 0.00   |
| 34) 1,4-Difluorobenzene     | 8.968  | 114   | 1466599  | 50.000   | ug/l   | 0.00     |
| 63) Chlorobenzene-d5        | 11.744 | 117   | 1323192  | 50.000   | ug/l   | 0.00     |
| 72) 1,4-Dichlorobenzene-d4  | 13.672 | 152   | 486013   | 50.000   | ug/l   | 0.00     |
| System Monitoring Compounds |        |       |          |          |        |          |
| 33) 1,2-Dichloroethane-d4   | 8.437  | 65    | 625488   | 47.864   | ug/l   | 0.00     |
| Spiked Amount               | 50.000 | Range | 61 - 141 | Recovery | =      | 95.720%  |
| 35) Dibromofluoromethane    | 8.021  | 113   | 425831   | 46.808   | ug/l   | 0.00     |
| Spiked Amount               | 50.000 | Range | 69 - 133 | Recovery | =      | 93.620%  |
| 50) Toluene-d8              | 10.440 | 98    | 1847641  | 48.210   | ug/l   | 0.00     |
| Spiked Amount               | 50.000 | Range | 65 - 126 | Recovery | =      | 96.420%  |
| 62) 4-Bromofluorobenzene    | 12.728 | 95    | 601866   | 44.071   | ug/l   | 0.00     |
| Spiked Amount               | 50.000 | Range | 58 - 135 | Recovery | =      | 88.140%  |
| Target Compounds            |        |       |          |          |        |          |
|                             |        |       |          |          |        | Qvalue   |
| 16) Acetone                 | 4.293  | 43    | 81798    | 9.018    | ug/l   | 99       |
| 43) Isopropyl Acetate       | 8.560  | 43    | 102743   | 3.308    | ug/l # | 85       |
| -----                       |        |       |          |          |        |          |

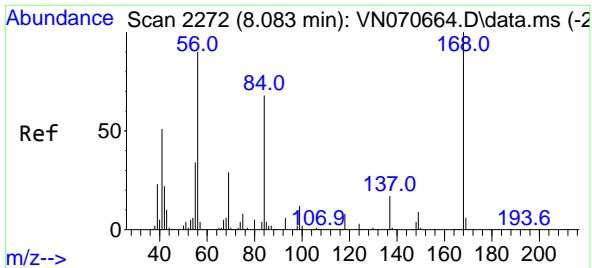
(#) = qualifier out of range (m) = manual integration (+) = signals summed

Data Path : Z:\voasrv\HPCHEM1\MSVOA\_N\Data\VN013122\  
 Data File : VN070863.D  
 Acq On : 31 Jan 2022 19:56  
 Operator : JC/MD  
 Sample : N1325-08  
 Misc : 5.00mL/MSVOA\_N/WATER  
 ALS Vial : 20 Sample Multiplier: 1

Instrument :  
 MSVOA\_N  
 ClientSampleId :  
 TES-3

Quant Time: Feb 01 05:02:55 2022  
 Quant Method : Z:\voasrv\HPCHEM1\MSVOA\_N\methods\82N011822W.M  
 Quant Title : SW846 8260  
 QLast Update : Tue Jan 18 13:32:07 2022  
 Response via : Initial Calibration

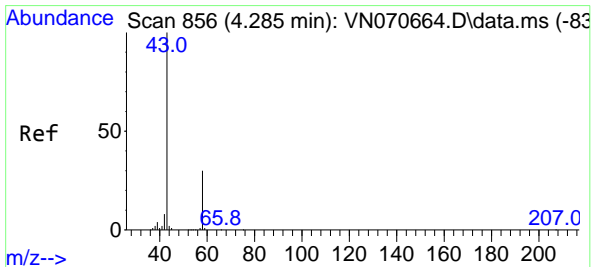
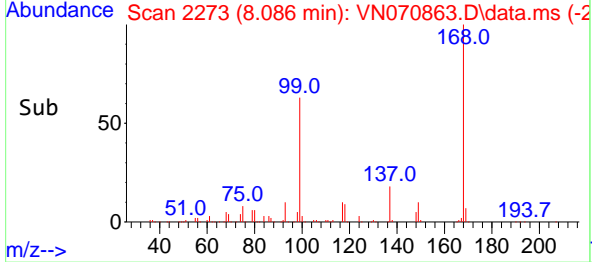
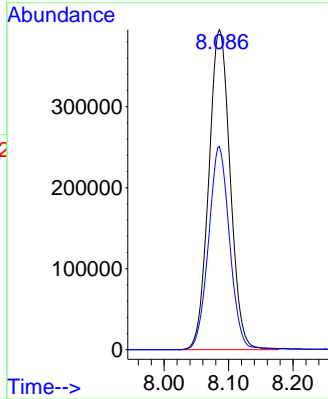
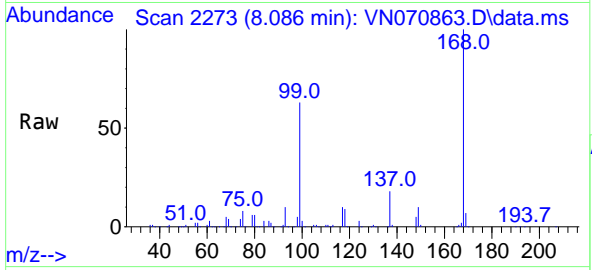




#1  
 Pentafluorobenzene  
 Concen: 50.000 ug/l  
 RT: 8.086 min Scan# 21  
 Delta R.T. 0.003 min  
 Lab File: VN070863.D  
 Acq: 31 Jan 2022 19:56

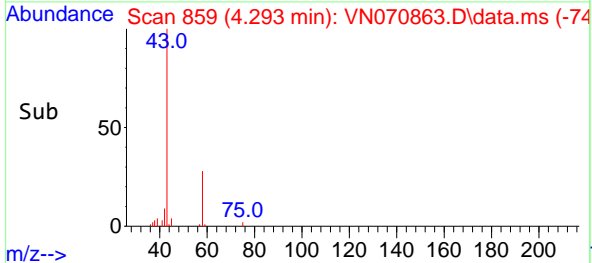
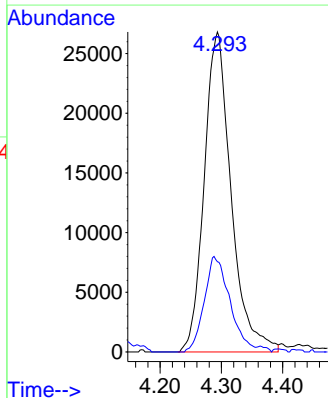
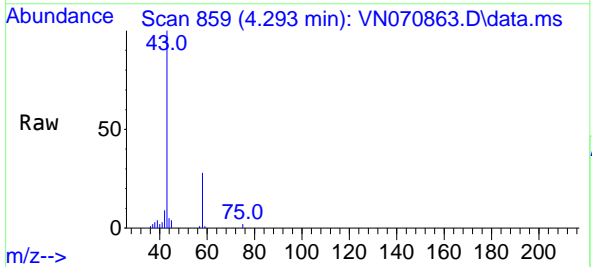
Instrument :  
 MSVOA\_N  
 ClientSampleId :  
 TES-3

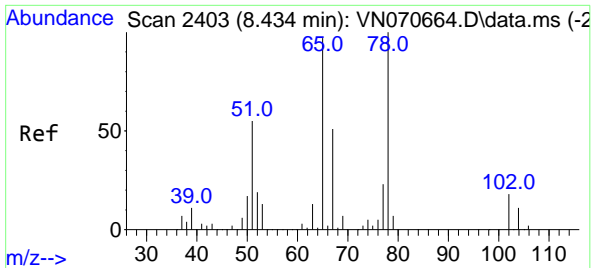
Tgt Ion:168 Resp: 911839  
 Ion Ratio Lower Upper  
 168 100  
 99 63.5 41.3 61.9#



#16  
 Acetone  
 Concen: 9.018 ug/l  
 RT: 4.293 min Scan# 859  
 Delta R.T. 0.008 min  
 Lab File: VN070863.D  
 Acq: 31 Jan 2022 19:56

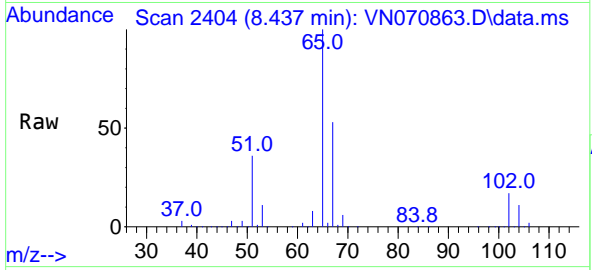
Tgt Ion: 43 Resp: 81798  
 Ion Ratio Lower Upper  
 43 100  
 58 28.2 23.1 34.7



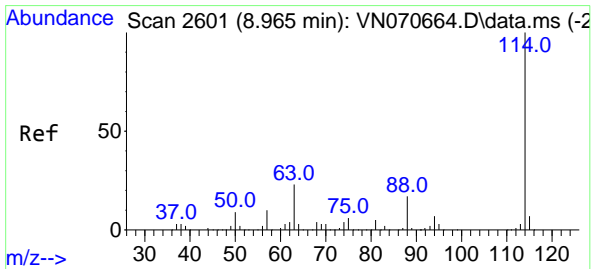
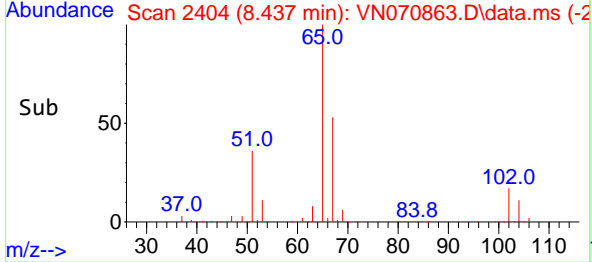
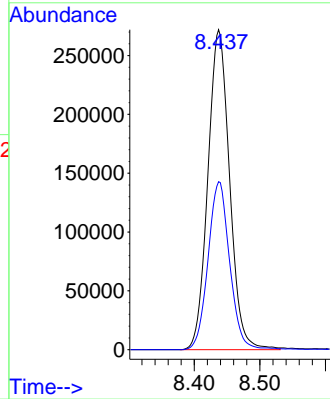


#33  
 1,2-Dichloroethane-d4  
 Concen: 47.864 ug/l  
 RT: 8.437 min Scan# 24  
 Delta R.T. 0.003 min  
 Lab File: VN070863.D  
 Acq: 31 Jan 2022 19:56

Instrument :  
 MSVOA\_N  
 ClientSampleId :  
 TES-3

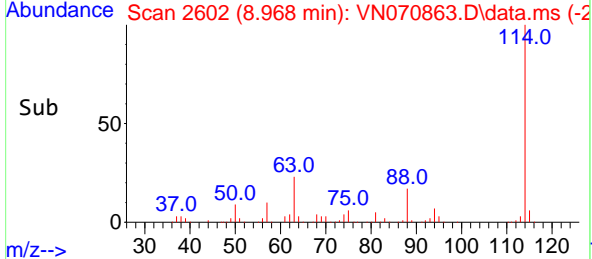
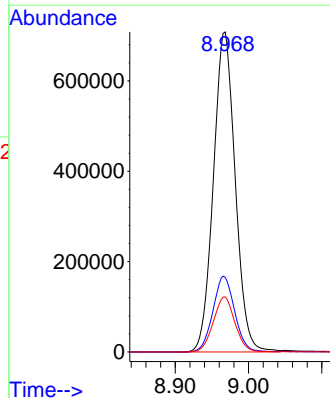
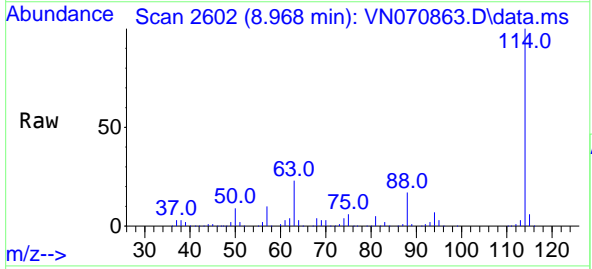


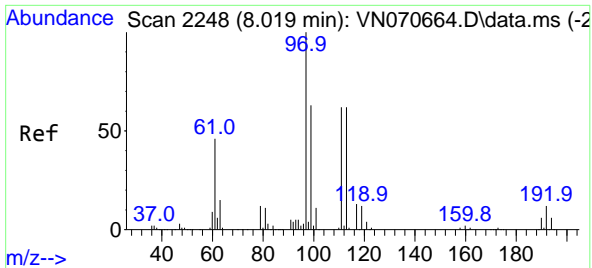
Tgt Ion: 65 Resp: 625488  
 Ion Ratio Lower Upper  
 65 100  
 67 52.3 0.0 103.0



#34  
 1,4-Difluorobenzene  
 Concen: 50.000 ug/l  
 RT: 8.968 min Scan# 2602  
 Delta R.T. 0.003 min  
 Lab File: VN070863.D  
 Acq: 31 Jan 2022 19:56

Tgt Ion: 114 Resp: 1466599  
 Ion Ratio Lower Upper  
 114 100  
 63 23.3 0.0 37.8  
 88 17.2 0.0 27.4



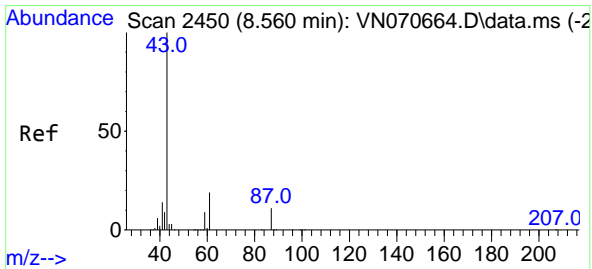
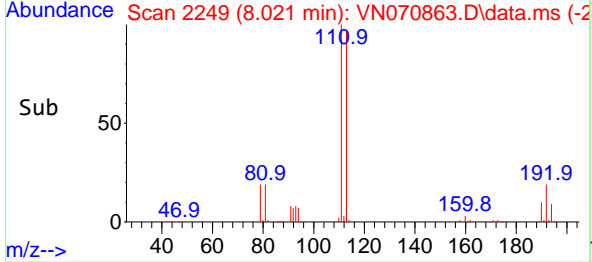
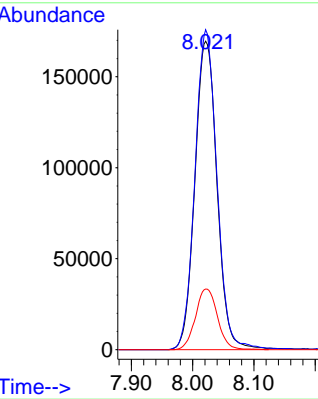
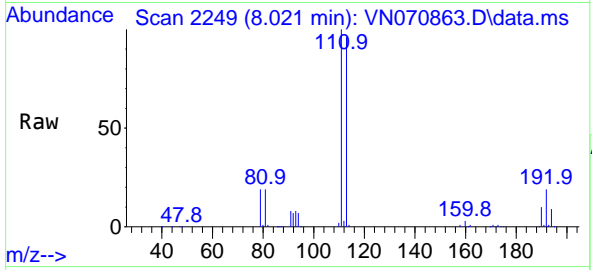


#35  
 Dibromofluoromethane  
 Concen: 46.808 ug/l  
 RT: 8.021 min Scan# 21  
 Delta R.T. 0.002 min  
 Lab File: VN070863.D  
 Acq: 31 Jan 2022 19:56

Instrument :  
 MSVOA\_N  
 ClientSampleId :  
 TES-3

Tgt Ion: 113 Resp: 425831

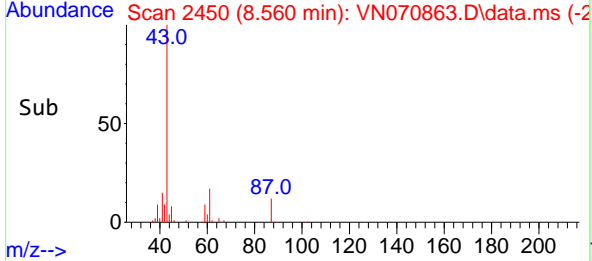
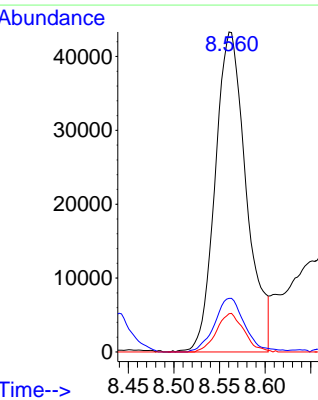
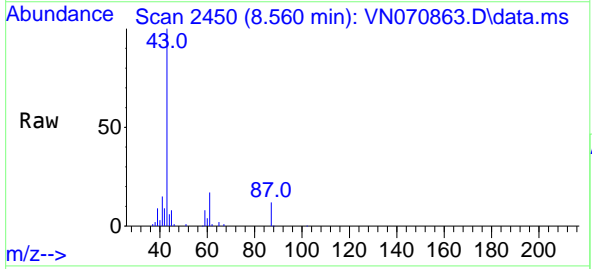
| Ion | Ratio | Lower | Upper |
|-----|-------|-------|-------|
| 113 | 100   |       |       |
| 111 | 103.2 | 82.2  | 123.2 |
| 192 | 19.6  | 16.9  | 25.3  |

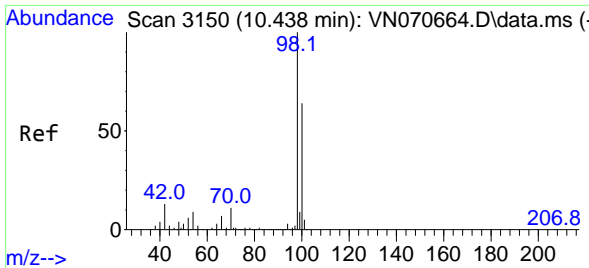


#43  
 Isopropyl Acetate  
 Concen: 3.308 ug/l  
 RT: 8.560 min Scan# 2450  
 Delta R.T. 0.000 min  
 Lab File: VN070863.D  
 Acq: 31 Jan 2022 19:56

Tgt Ion: 43 Resp: 102743

| Ion | Ratio | Lower | Upper |
|-----|-------|-------|-------|
| 43  | 100   |       |       |
| 61  | 16.4  | 20.4  | 30.6# |
| 87  | 10.7  | 11.2  | 16.8# |

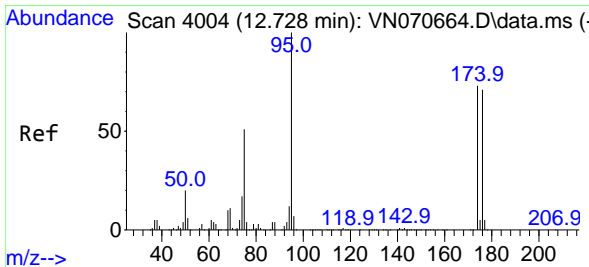
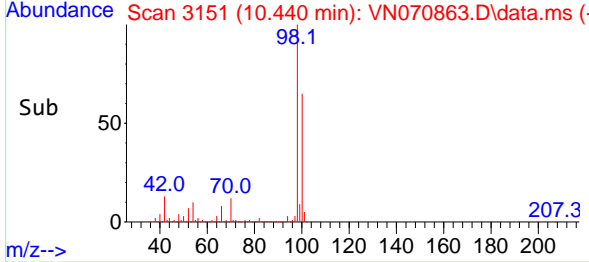
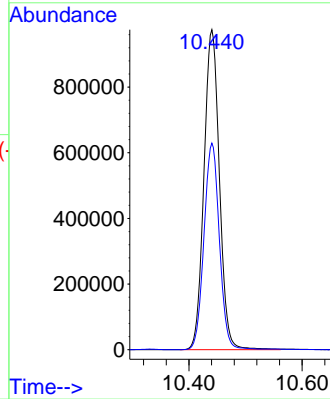
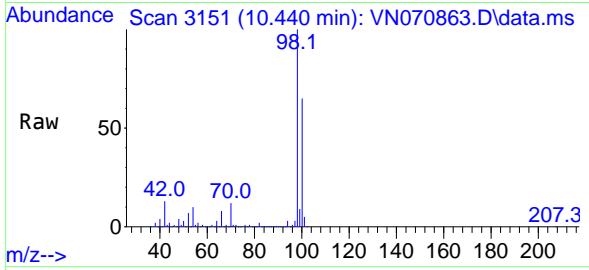




#50  
 Toluene-d8  
 Concen: 48.210 ug/l  
 RT: 10.440 min Scan# 3150  
 Delta R.T. 0.002 min  
 Lab File: VN070863.D  
 Acq: 31 Jan 2022 19:56

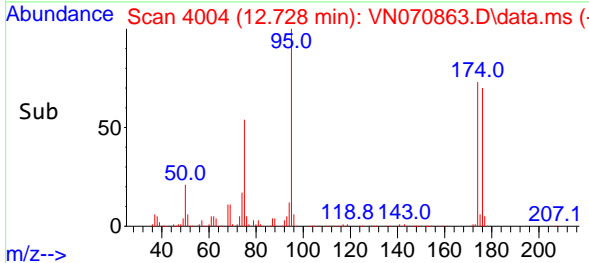
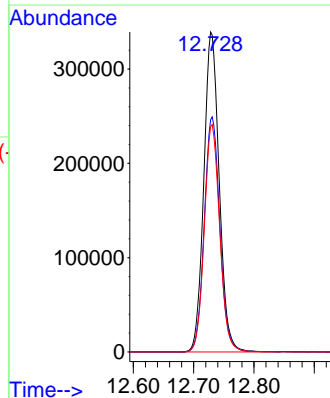
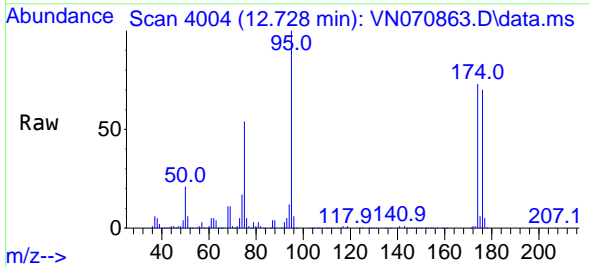
Instrument :  
 MSVOA\_N  
 ClientSampleId :  
 TES-3

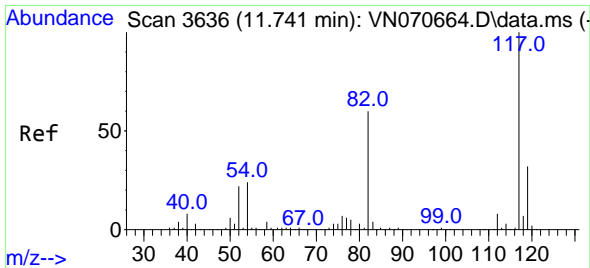
Tgt Ion: 98 Resp: 1847641  
 Ion Ratio Lower Upper  
 98 100  
 100 64.3 50.4 75.6



#62  
 4-Bromofluorobenzene  
 Concen: 44.071 ug/l  
 RT: 12.728 min Scan# 4004  
 Delta R.T. 0.000 min  
 Lab File: VN070863.D  
 Acq: 31 Jan 2022 19:56

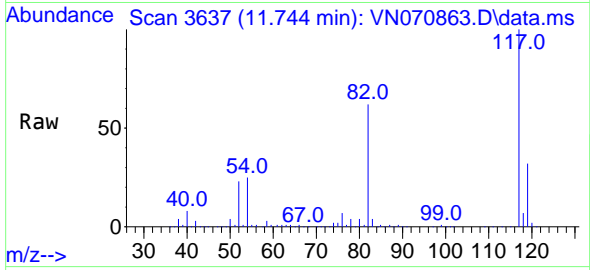
Tgt Ion: 95 Resp: 601866  
 Ion Ratio Lower Upper  
 95 100  
 174 74.4 0.0 187.2  
 176 71.0 0.0 181.4



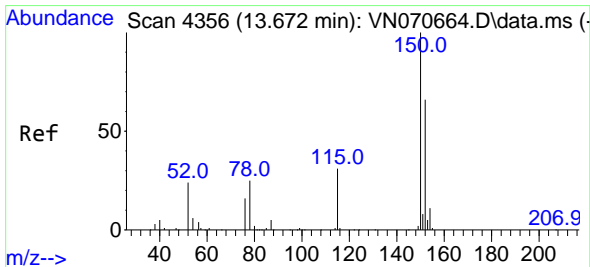
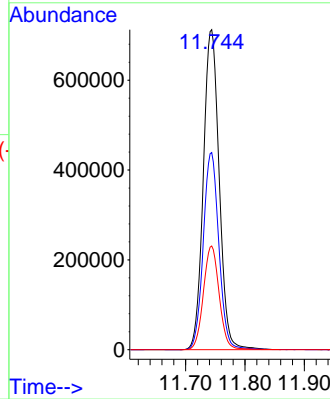
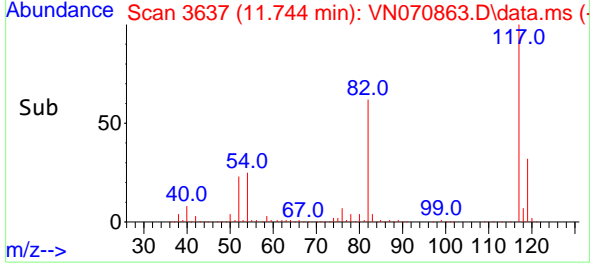


#63  
 Chlorobenzene-d5  
 Concen: 50.000 ug/l  
 RT: 11.744 min Scan# 30  
 Delta R.T. 0.003 min  
 Lab File: VN070863.D  
 Acq: 31 Jan 2022 19:56

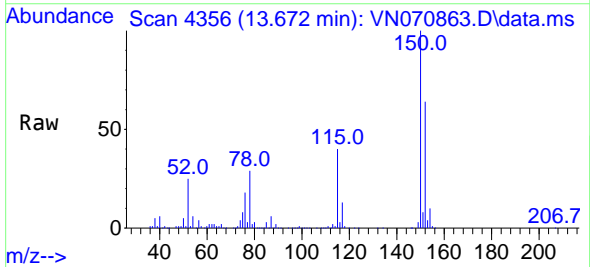
Instrument :  
 MSVOA\_N  
 ClientSampleId :  
 TES-3



Tgt Ion:117 Resp: 1323192  
 Ion Ratio Lower Upper  
 117 100  
 82 61.6 42.4 63.6  
 119 32.4 25.4 38.2



#72  
 1,4-Dichlorobenzene-d4  
 Concen: 50.000 ug/l  
 RT: 13.672 min Scan# 4356  
 Delta R.T. 0.000 min  
 Lab File: VN070863.D  
 Acq: 31 Jan 2022 19:56



Tgt Ion:152 Resp: 486013  
 Ion Ratio Lower Upper  
 152 100  
 115 62.3 27.5 82.5  
 150 157.0 0.0 344.4

