

Data Path : Z:\voasrv\HPCHEM1\MSVOA\_N\Data\VN020123\  
 Data File : VN076493.D  
 Acq On : 01 Feb 2023 12:50  
 Operator : JC\MD  
 Sample : VN0201MBS01  
 Misc : 5.00g/10mL/100uL/5.00mL/MSVOA\_N/MEOH  
 ALS Vial : 7 Sample Multiplier: 1

Instrument :  
 MSVOA\_N  
 ClientSampleId :  
 VN0201MBS01

Quant Time: Feb 01 23:27:05 2023  
 Quant Method : Z:\voasrv\HPCHEM1\MSVOA\_X\Method\82X011123W.M  
 Quant Title : SW846 8260  
 QLast Update : Wed Jan 11 14:48:42 2023  
 Response via : Initial Calibration

Compound	R.T.	QIon	Response	Conc	Units	Dev(Min)
Internal Standards						
1) Pentafluorobenzene	0.000	168	0	0.000	ug/l	-5.55
34) 1,4-Difluorobenzene	0.000	114	0	0.000	ug/l	-6.76
63) Chlorobenzene-d5	0.000	117	0	0.000	ug/l	-10.06
72) 1,4-Dichlorobenzene-d4	0.000	152	0	0.000	ug/l	-12.02
System Monitoring Compounds						
33) 1,2-Dichloroethane-d4	0.000	65	0	0.000	ug/l	
Spiked Amount	50.000	Range 78 - 117	Recovery	=	0.000%#	
35) Dibromofluoromethane	0.000	113	0	0.000	ug/l	
Spiked Amount	50.000	Range 75 - 124	Recovery	=	0.000%#	
50) Toluene-d8	8.671	98	12491	0.000	ug/l	0.02
Spiked Amount	50.000	Range 92 - 112	Recovery	=	0.000%#	
62) 4-Bromofluorobenzene	11.106	95	1149	0.000	ug/l	0.03
Spiked Amount	50.000	Range 83 - 123	Recovery	=	0.000%#	

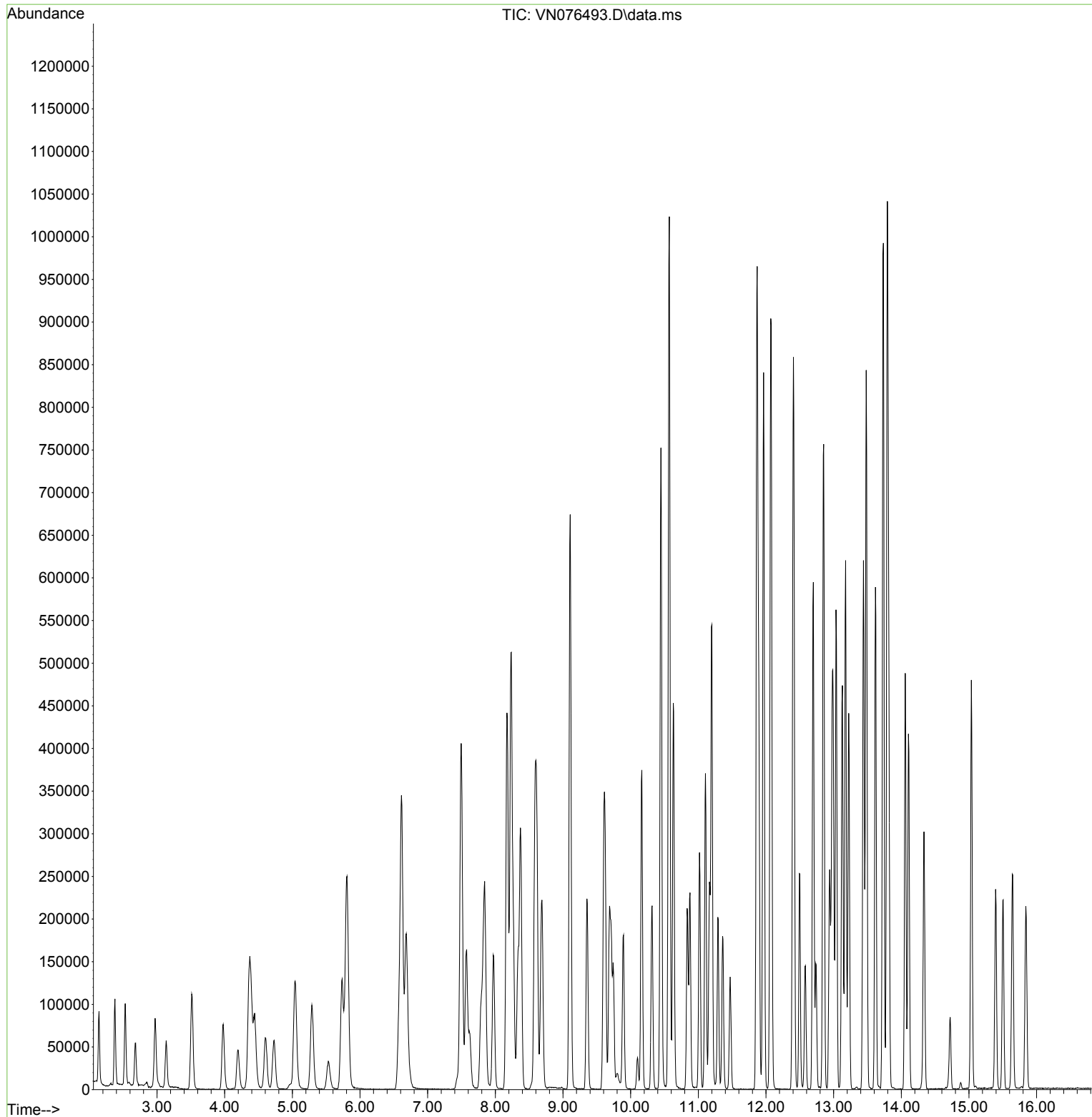
Target Compounds Qvalue

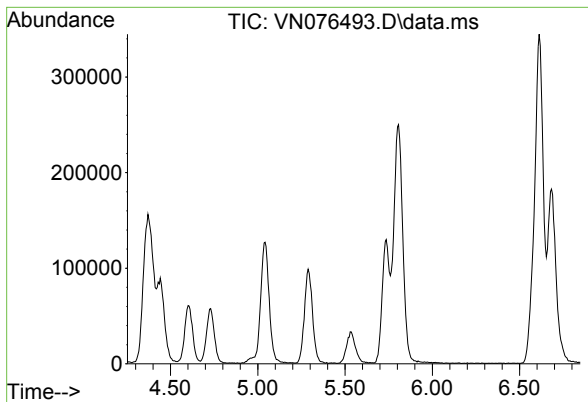
(#) = qualifier out of range (m) = manual integration (+) = signals summed

Data Path : Z:\voasrv\HPCHEM1\MSVOA\_N\Data\VN020123\  
 Data File : VN076493.D  
 Acq On : 01 Feb 2023 12:50  
 Operator : JC\MD  
 Sample : VN0201MBS01  
 Misc : 5.00g/10mL/100uL/5.00mL/MSVOA\_N/MEOH  
 ALS Vial : 7 Sample Multiplier: 1

**Instrument :**  
 MSVOA\_N  
**ClientSampleId :**  
 VN0201MBS01

Quant Time: Feb 01 23:27:05 2023  
 Quant Method : Z:\voasrv\HPCHEM1\MSVOA\_X\Method\82X011123W.M  
 Quant Title : SW846 8260  
 QLast Update : Wed Jan 11 14:48:42 2023  
 Response via : Initial Calibration

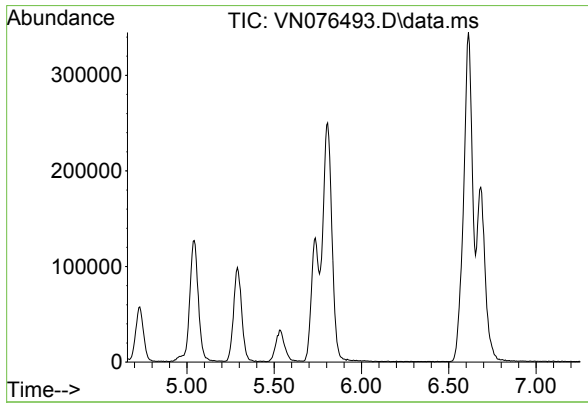
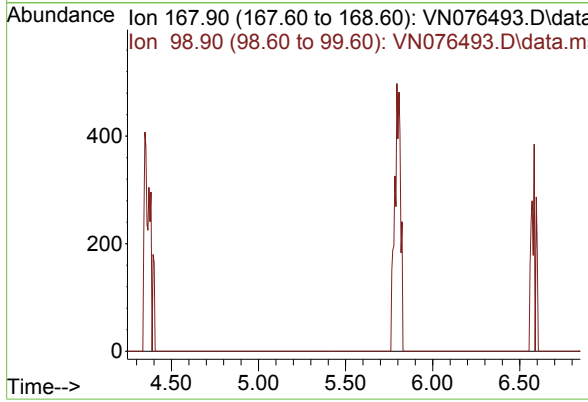




#1  
 Pentafluorobenzene  
 Concen: 0.000 ug/l  
 Expected RT: 5.55 min  
 Lab File: VN076493.D  
 Acq: 01 Feb 2023 12:50

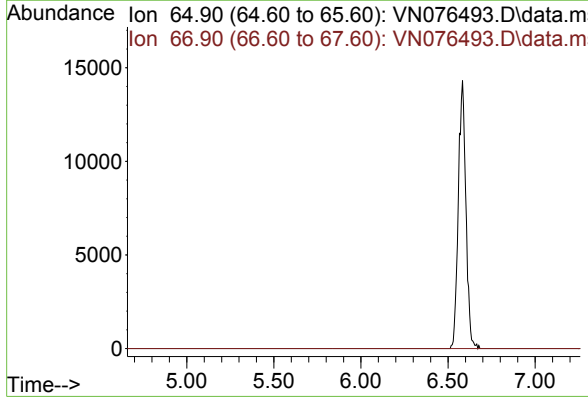
Instrument :  
 MSVOA\_N  
 ClientSampleId :  
 VN0201MBS01

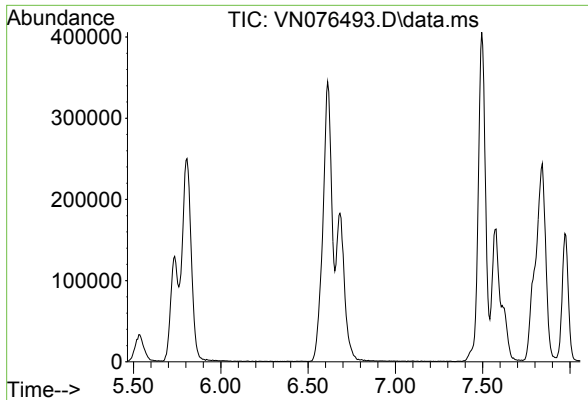
Tgt Ion: 168  
 Sig Exp Ratio  
 168 100  
 99 49.5



#33  
 1,2-Dichloroethane-d4  
 Concen: 0.000 ug/l  
 Expected RT: 5.96 min  
 Lab File: VN076493.D  
 Acq: 01 Feb 2023 12:50

Tgt Ion: 65  
 Sig Exp Ratio  
 65 100  
 67 52.4

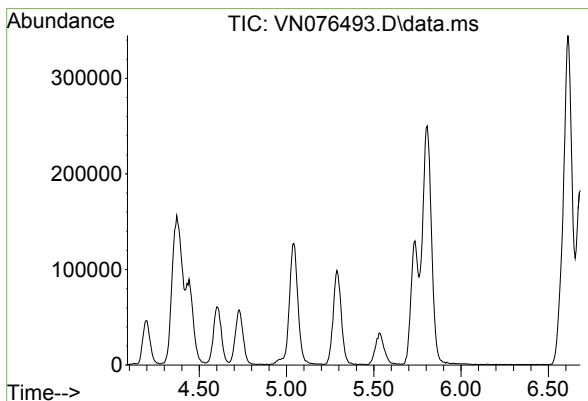
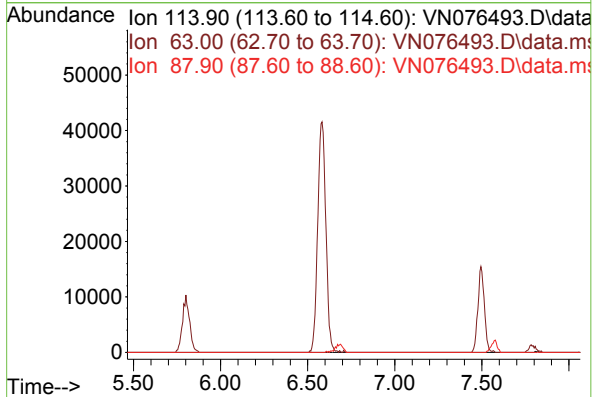




#34  
 1,4-Difluorobenzene  
 Concen: 0.000 ug/l  
 Expected RT: 6.76 min  
 Lab File: VN076493.D  
 Acq: 01 Feb 2023 12:50

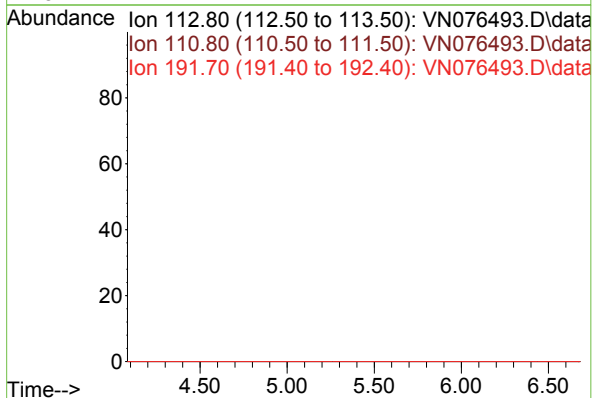
Instrument :  
 MSVOA\_N  
 ClientSampleId :  
 VN0201MBS01

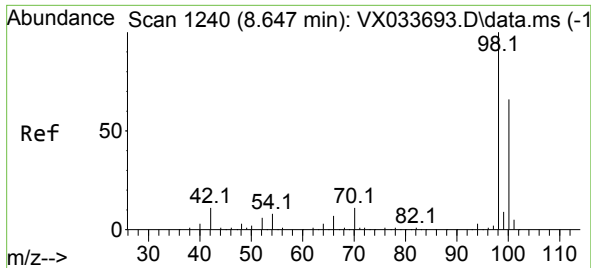
Tgt Ion	Sig	Exp Ratio
114	114	100
63	63	18.7
88	88	15.3



#35  
 Dibromofluoromethane  
 Concen: 0.000 ug/l  
 Expected RT: 5.39 min  
 Lab File: VN076493.D  
 Acq: 01 Feb 2023 12:50

Tgt Ion	Sig	Exp Ratio
113	113	100
111	111	103.8
192	192	23.7

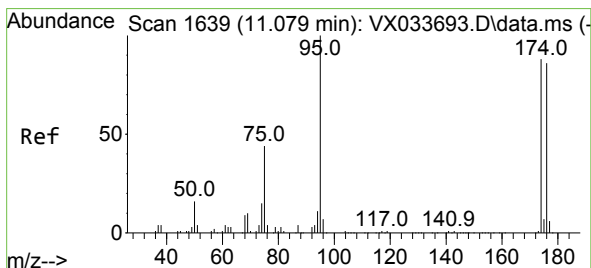
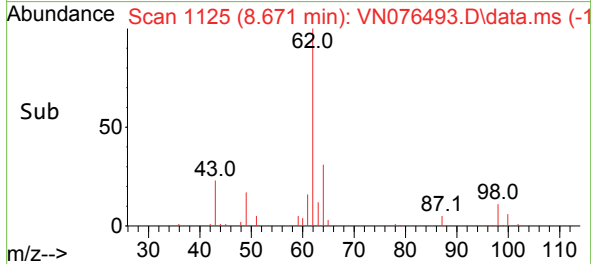
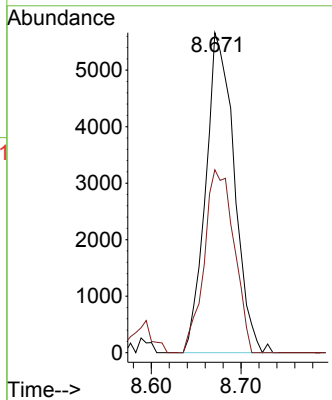
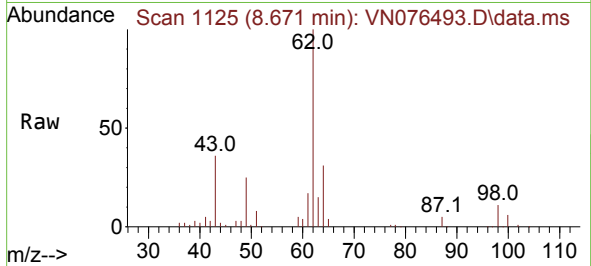




#50  
 Toluene-d8  
 Concen: 0.000 ug/l  
 RT: 8.671 min Scan# 1111  
 Delta R.T. 0.024 min  
 Lab File: VN076493.D  
 Acq: 01 Feb 2023 12:50

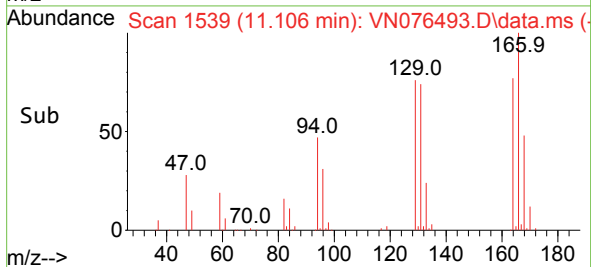
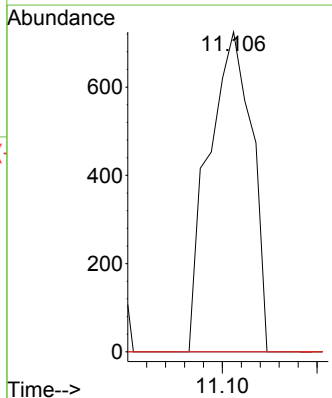
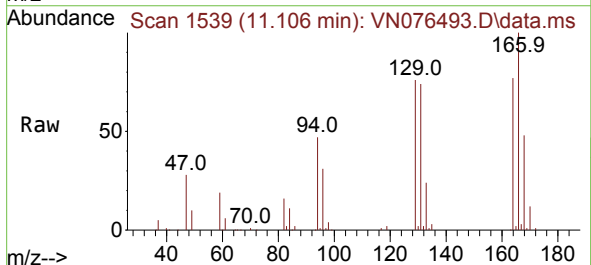
Instrument : MSVOA\_N  
 ClientSampleId : VN0201MBS01

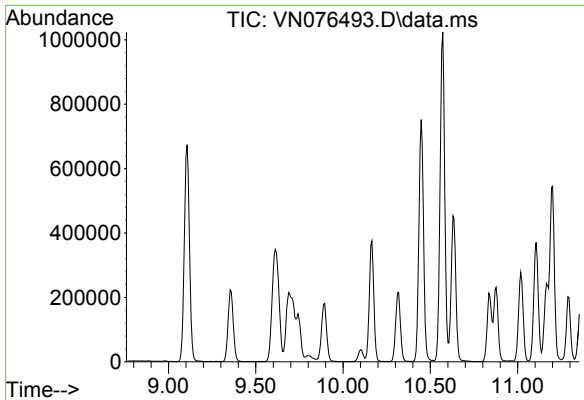
Tgt Ion: 98 Resp: 12491  
 Ion Ratio Lower Upper  
 98 100  
 100 59.9 53.6 80.4



#62  
 4-Bromofluorobenzene  
 Concen: 0.000 ug/l  
 RT: 11.106 min Scan# 1539  
 Delta R.T. 0.027 min  
 Lab File: VN076493.D  
 Acq: 01 Feb 2023 12:50

Tgt Ion: 95 Resp: 1149  
 Ion Ratio Lower Upper  
 95 100  
 174 0.0 0.0 184.4  
 176 0.0 0.0 178.8

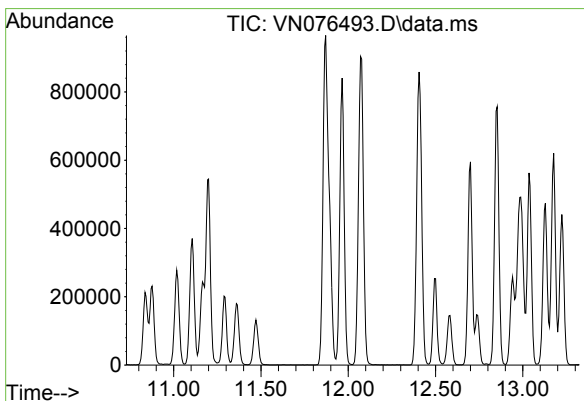
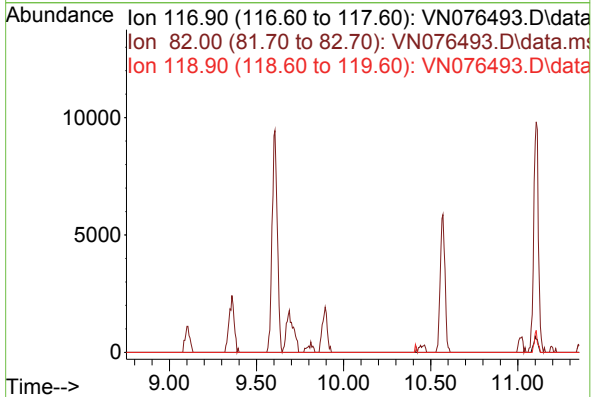




#63  
 Chlorobenzene-d5  
 Concen: 0.000 ug/l  
 Expected RT: 10.06 min  
 Lab File: VN076493.D  
 Acq: 01 Feb 2023 12:50

Instrument :  
 MSVOA\_N  
 ClientSampleId :  
 VN0201MBS01

Tgt Ion: 117  
 Sig Exp Ratio  
 117 100  
 82 50.7  
 119 32.0



#72  
 1,4-Dichlorobenzene-d4  
 Concen: 0.000 ug/l  
 Expected RT: 12.02 min  
 Lab File: VN076493.D  
 Acq: 01 Feb 2023 12:50

Tgt Ion: 152  
 Sig Exp Ratio  
 152 100  
 115 77.4  
 150 174.1

