

Data Path : Z:\VOASRV\HPCHEM1\MSVOA N\DATA\VN020320\  
 Data File : VN059972.D  
 Acq On : 3 Feb 2020 14:17  
 Operator : JC/MD  
 Sample : L1016-19  
 Misc : 5.00mL/MSVOA N/WATER  
 ALS Vial : 11 Sample Multiplier: 1

Instrument :  
 MSVOA\_N  
 ClientSampleId :  
 SU-02-013120

Quant Time: Feb 03 15:26:46 2020  
 Quant Method : Z:\VOASRV\HPCHEM1\MSVOA\_N\METHODS\82N011320W.M  
 Quant Title : SW846 8260  
 QLast Update : Sat Jan 18 03:09:32 2020  
 Response via : Initial Calibration

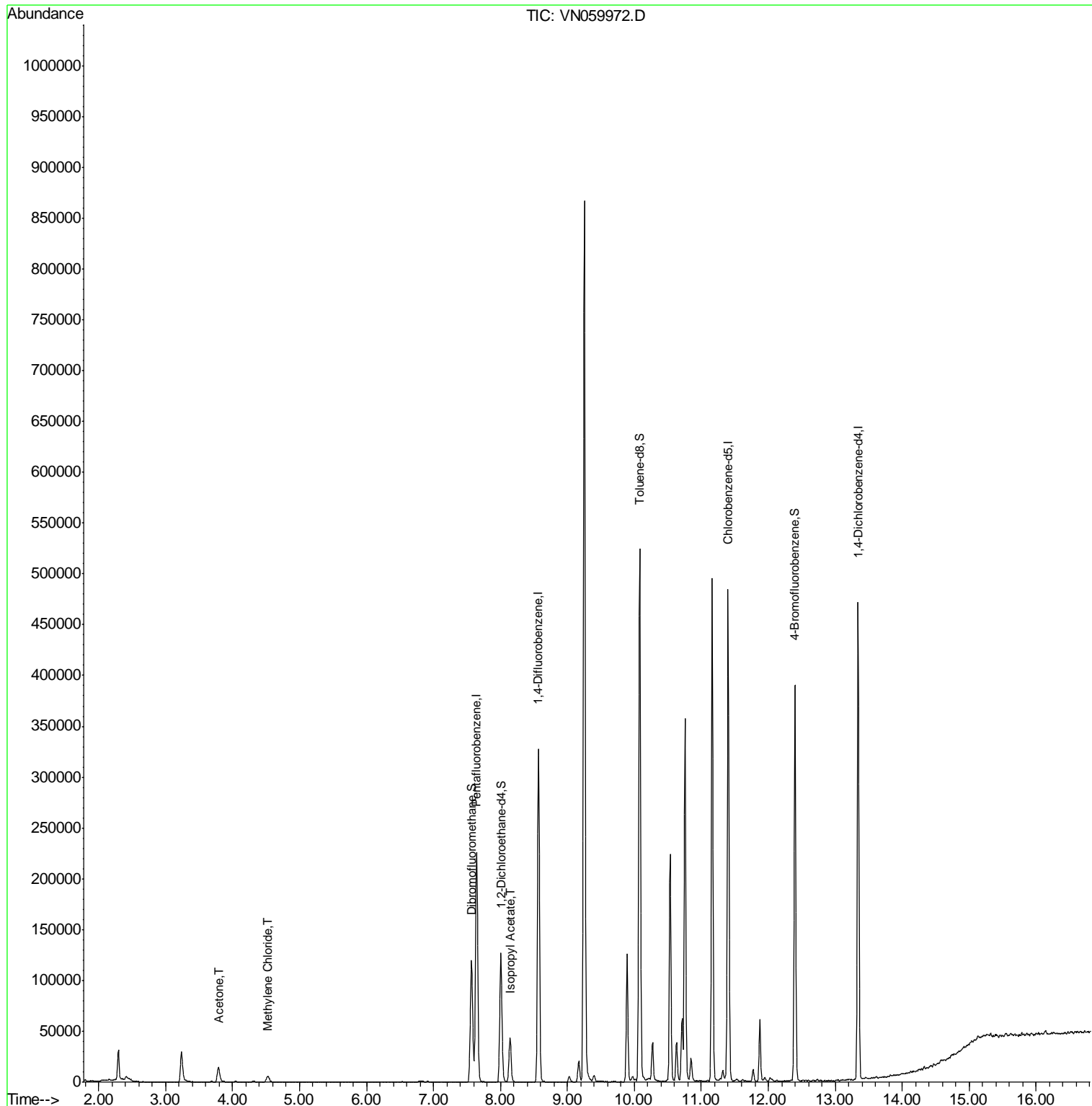
Internal Standards	R.T.	QIon	Response	Conc	Units	Dev(Min)
1) Pentafluorobenzene	7.64	168	195313	50.00	ug/l	0.00
34) 1,4-Difluorobenzene	8.57	114	301408	50.00	ug/l	0.00
63) Chlorobenzene-d5	11.40	117	282278	50.00	ug/l	0.00
72) 1,4-Dichlorobenzene-d4	13.34	152	127881	50.00	ug/l	0.00
System Monitoring Compounds						
33) 1,2-Dichloroethane-d4	8.00	65	109404	50.44	ug/l	0.00
Spiked Amount				50.000		
			Recovery	=	100.88%	
35) Dibromofluoromethane	7.57	113	92420	51.42	ug/l	0.00
Spiked Amount				50.000		
			Recovery	=	102.84%	
50) Toluene-d8	10.08	98	364218	52.30	ug/l	0.00
Spiked Amount				50.000		
			Recovery	=	104.60%	
62) 4-Bromofluorobenzene	12.40	95	129599	51.62	ug/l	0.00
Spiked Amount				50.000		
			Recovery	=	103.24%	
Target Compounds						
16) Acetone	3.79	43	24578	24.181	ug/l	98
20) Methylene Chloride	4.52	84	4788	1.176	ug/l	93
43) Isopropyl Acetate	8.14	43	51262	12.106	ug/l #	91

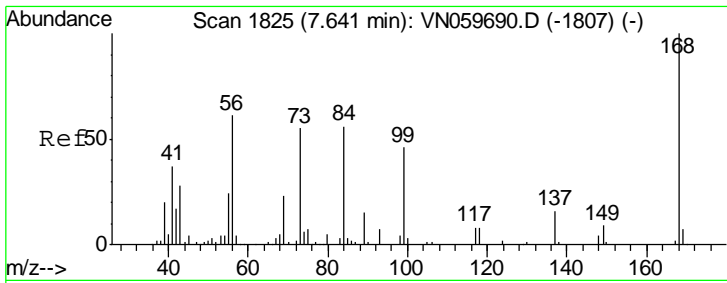
(#) = qualifier out of range (m) = manual integration (+) = signals summed

Data Path : Z:\VOASRV\HPCHEM1\MSVOA N\DATA\VN020320\  
 Data File : VN059972.D  
 Acq On : 3 Feb 2020 14:17  
 Operator : JC/MD  
 Sample : L1016-19  
 Misc : 5.00mL/MSVOA N/WATER  
 ALS Vial : 11 Sample Multiplier: 1

Instrument :  
 MSVOA\_N  
 ClientSampleId :  
 SU-02-013120

Quant Time: Feb 03 15:26:46 2020  
 Quant Method : Z:\VOASRV\HPCHEM1\MSVOA\_N\METHODS\82N011320W.M  
 Quant Title : SW846 8260  
 QLast Update : Sat Jan 18 03:09:32 2020  
 Response via : Initial Calibration

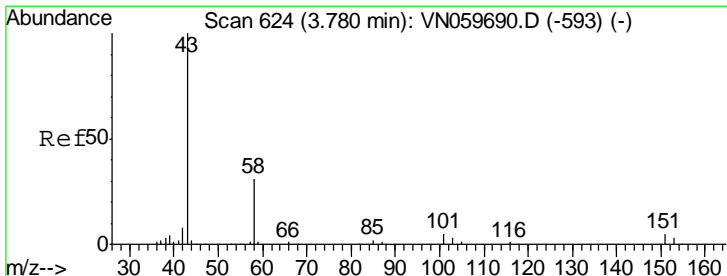
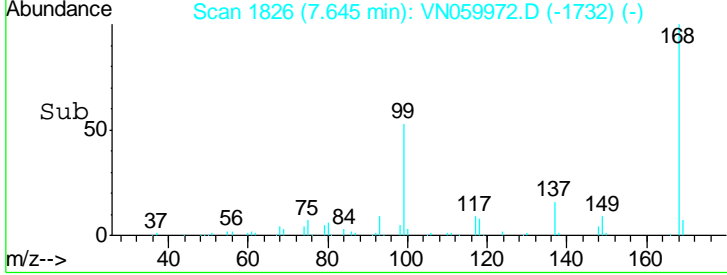
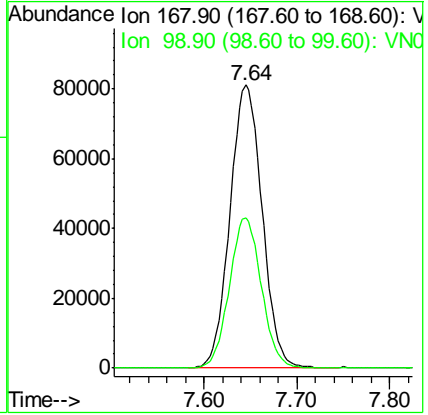
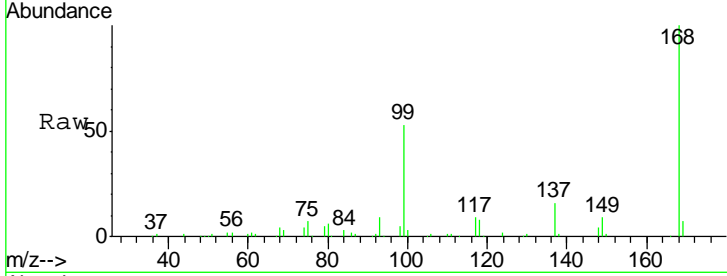




#1  
 Pentafluorobenzene  
 Concen: 50.000 ug/l  
 RT: 7.64 min Scan# 1826  
 Delta R.T. 0.00 min  
 Lab File: VN059972.D  
 Acq: 3 Feb 2020 14:17

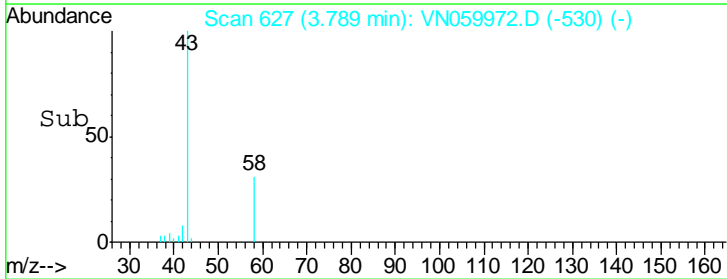
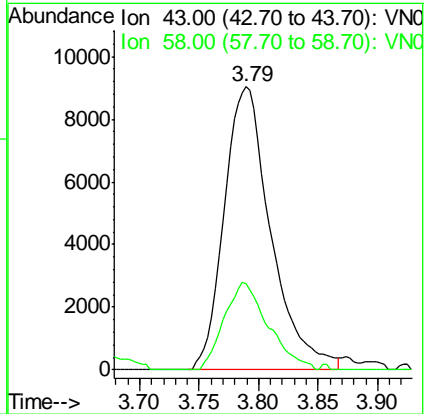
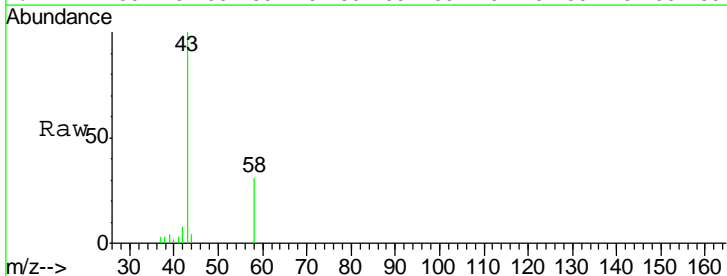
**Instrument :**  
 MSVOA\_N  
**ClientSampled :**  
 SU-02-013120

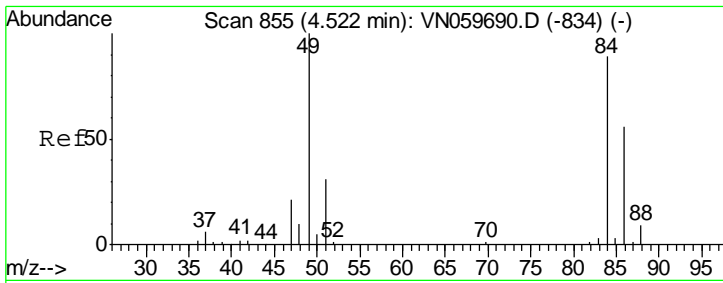
Tgt Ion	Resp	Lower	Upper
168	100		
99	53.2	48.2	72.4



#16  
 Acetone  
 Concen: 24.181 ug/l  
 RT: 3.79 min Scan# 627  
 Delta R.T. 0.01 min  
 Lab File: VN059972.D  
 Acq: 3 Feb 2020 14:17

Tgt Ion	Resp	Lower	Upper
43	100		
58	30.5	23.6	35.4

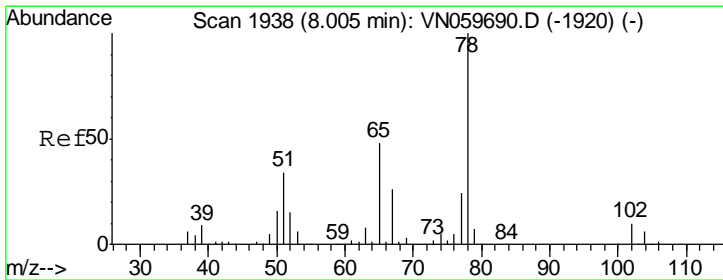
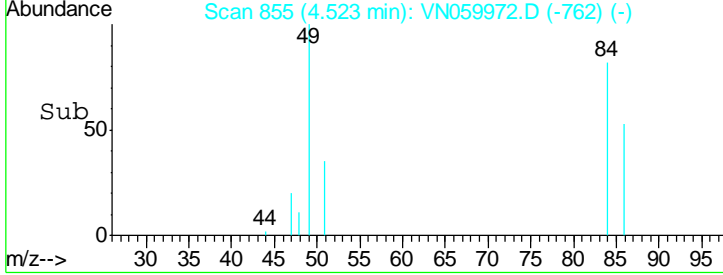
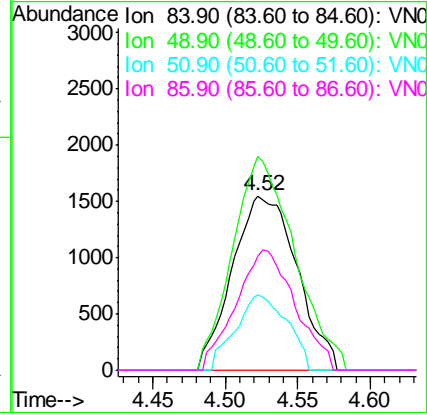
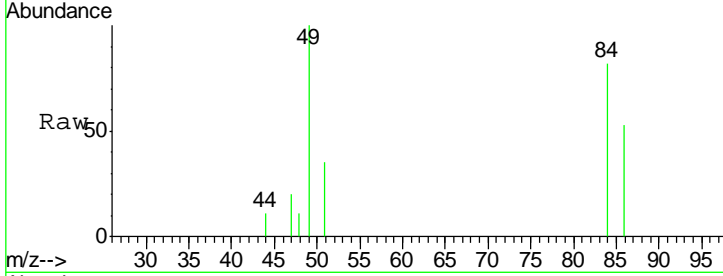




#20  
Methylene Chloride  
Concen: 1.176 ug/l  
RT: 4.52 min Scan# 855  
Delta R.T. 0.00 min  
Lab File: VN059972.D  
Acq: 3 Feb 2020 14:17

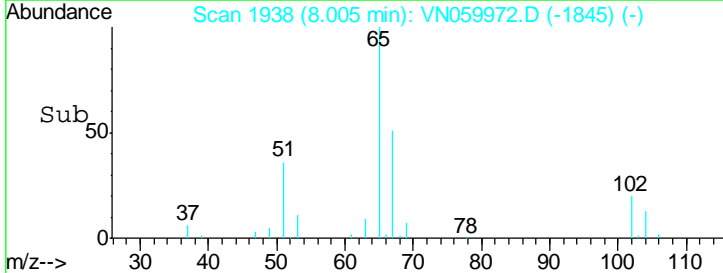
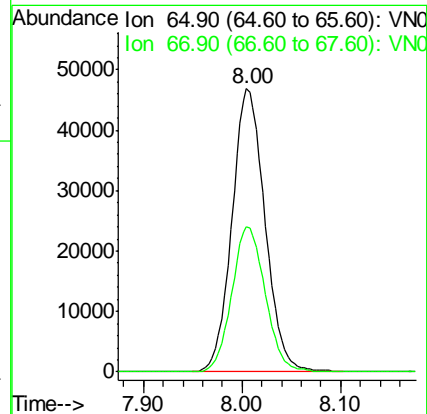
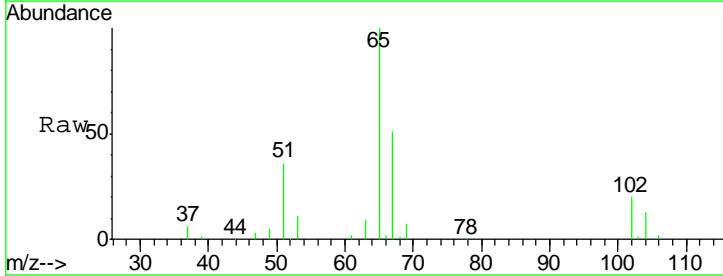
Instrument :  
MSVOA\_N  
ClientSampled :  
SU-02-013120

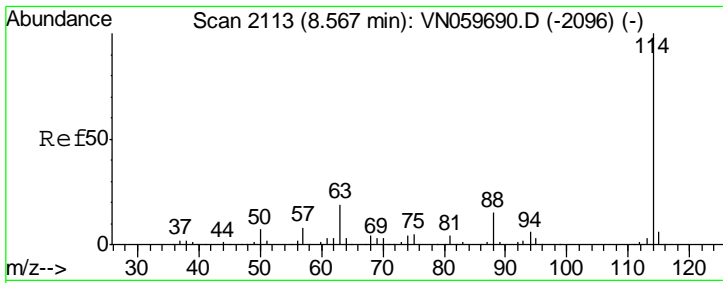
Tgt Ion	Resp	Lower	Upper
84	100		
49	122.5	106.6	160.0
51	43.1	31.9	47.9
86	65.2	50.8	76.2



#33  
1,2-Dichloroethane-d4  
Concen: 50.440 ug/l  
RT: 8.00 min Scan# 1938  
Delta R.T. 0.00 min  
Lab File: VN059972.D  
Acq: 3 Feb 2020 14:17

Tgt Ion	Resp	Lower	Upper
65	100		
67	51.8	0.0	103.0

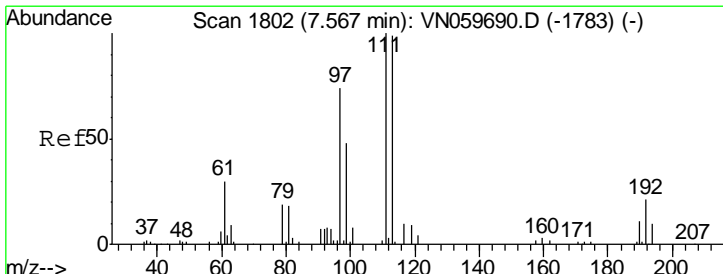
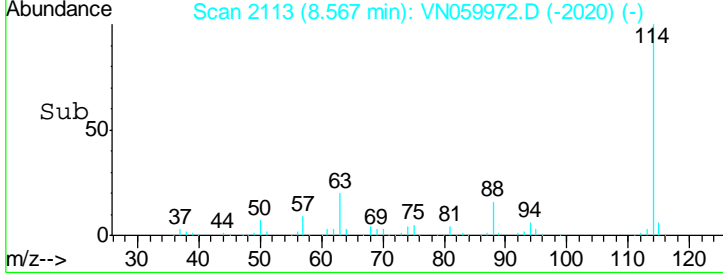
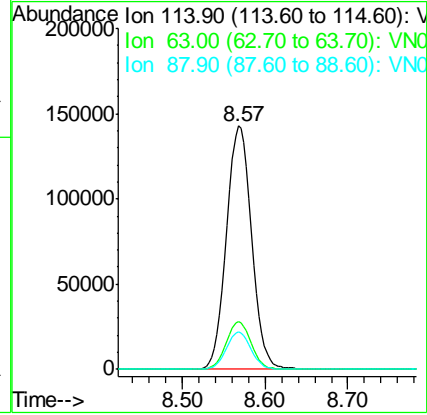
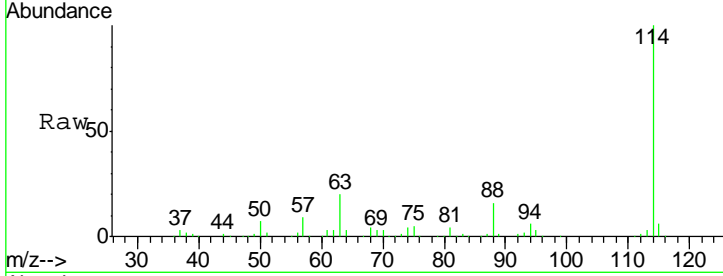




#34  
 1,4-Difluorobenzene  
 Concen: 50.000 ug/l  
 RT: 8.57 min Scan# 2113  
 Delta R.T. 0.00 min  
 Lab File: VN059972.D  
 Acq: 3 Feb 2020 14:17

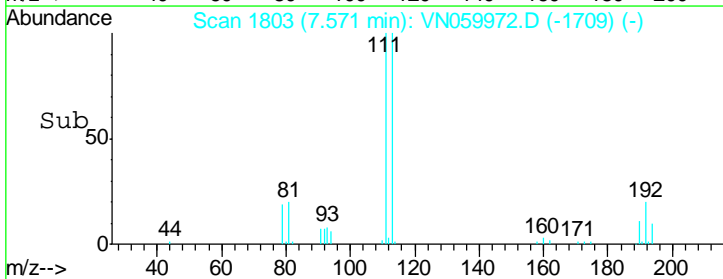
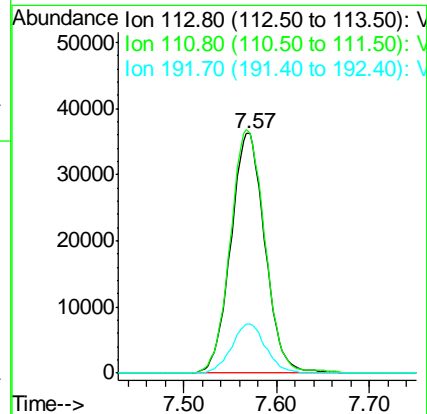
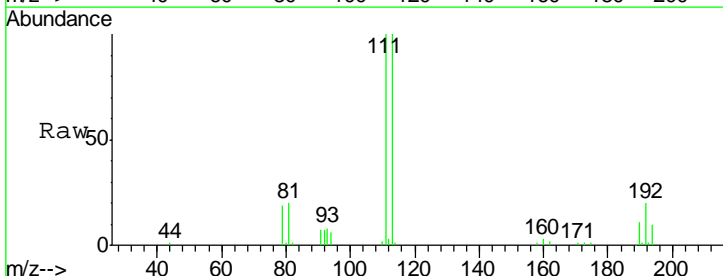
Instrument :  
 MSVOA\_N  
 ClientSampled :  
 SU-02-013120

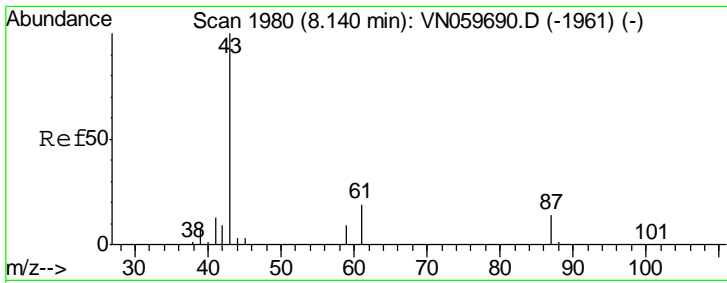
Tgt Ion	Resp	Lower	Upper
114	301408		
63	19.8	0.0	43.6
88	15.6	0.0	31.4



#35  
 Dibromofluoromethane  
 Concen: 51.418 ug/l  
 RT: 7.57 min Scan# 1803  
 Delta R.T. 0.00 min  
 Lab File: VN059972.D  
 Acq: 3 Feb 2020 14:17

Tgt Ion	Resp	Lower	Upper
113	92420		
111	102.7	83.5	125.3
192	20.3	15.4	23.2

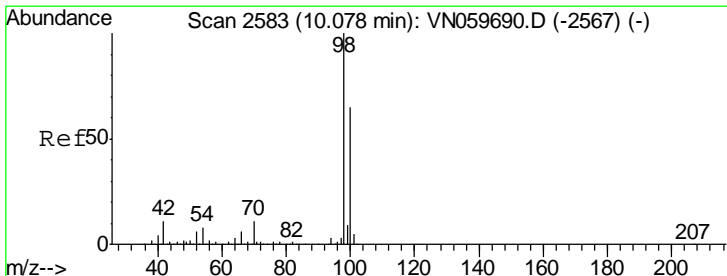
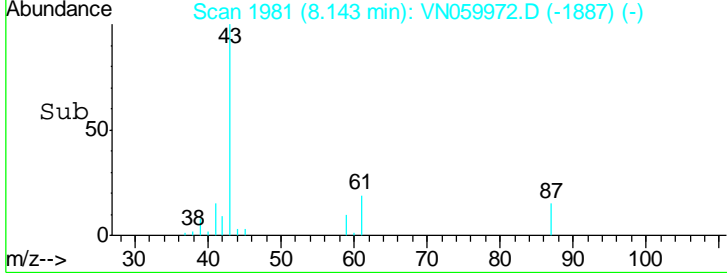
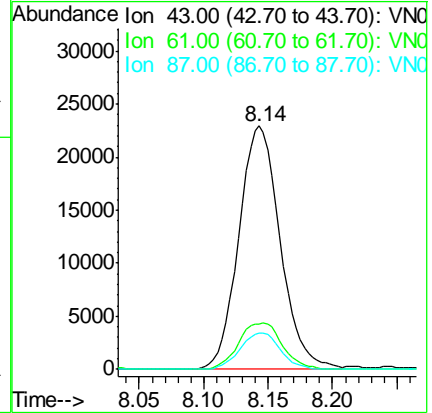
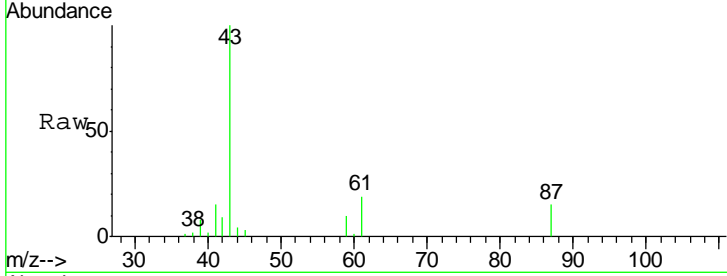




#43  
 Isopropyl Acetate  
 Concen: 12.106 ug/l  
 RT: 8.14 min Scan# 1981  
 Delta R.T. 0.00 min  
 Lab File: VN059972.D  
 Acq: 3 Feb 2020 14:17

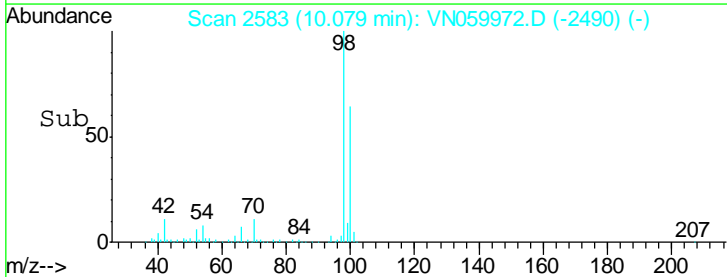
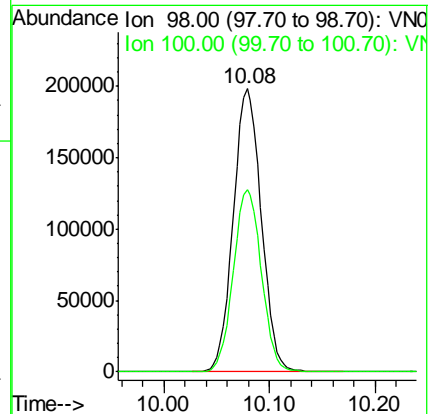
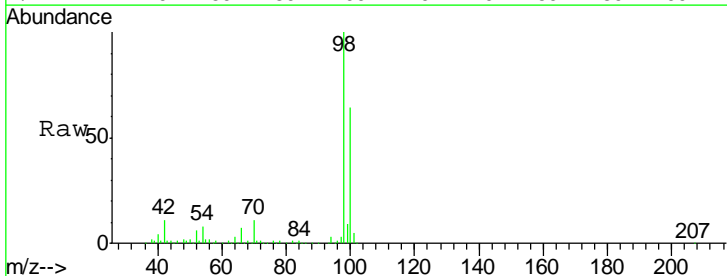
Instrument :  
 MSVOA\_N  
 ClientSampled :  
 SU-02-013120

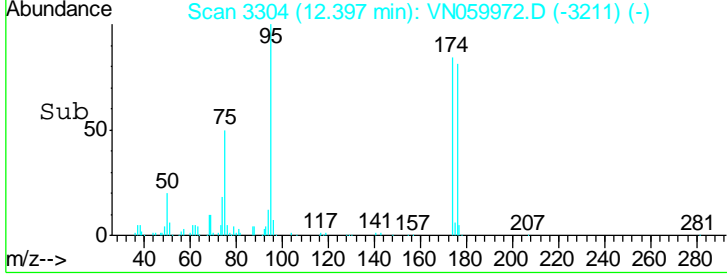
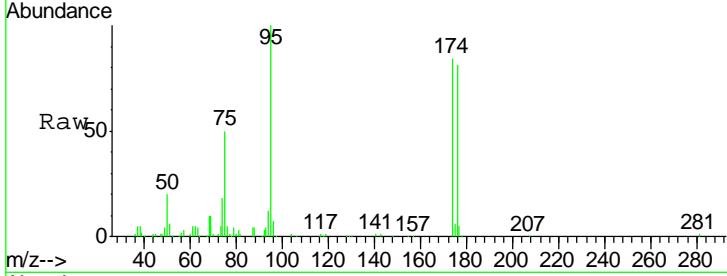
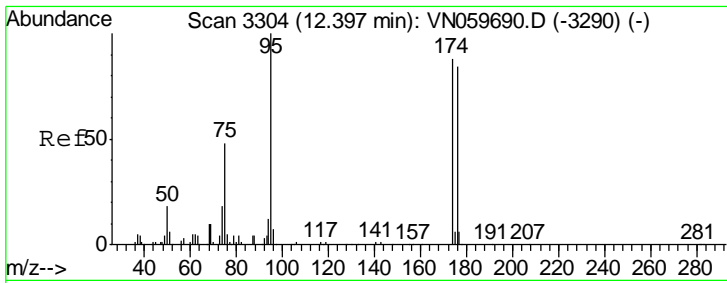
Tgt Ion	Resp	Lower	Upper
43	100		
61	20.1	20.2	30.2#
87	14.6	9.5	14.3#



#50  
 Toluene-d8  
 Concen: 52.299 ug/l  
 RT: 10.08 min Scan# 2583  
 Delta R.T. 0.00 min  
 Lab File: VN059972.D  
 Acq: 3 Feb 2020 14:17

Tgt Ion	Resp	Lower	Upper
98	100		
100	64.5	51.2	76.8

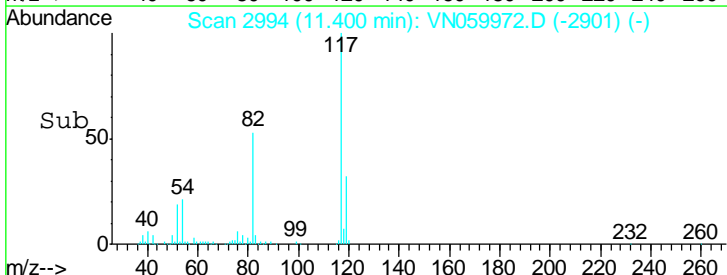
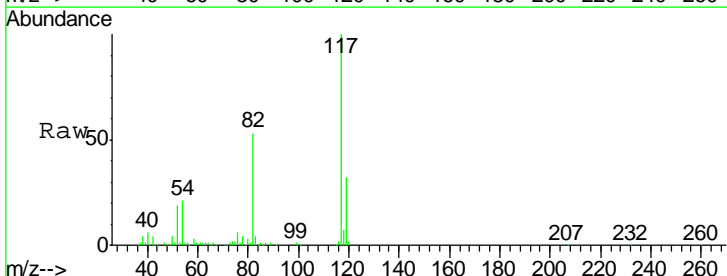
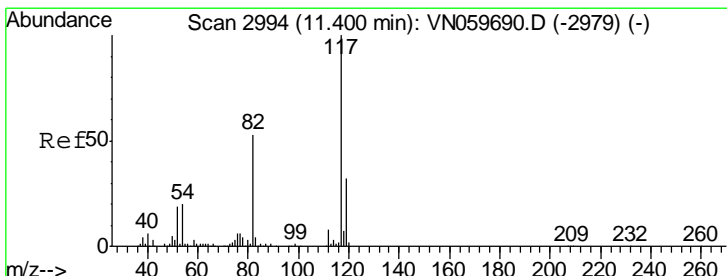
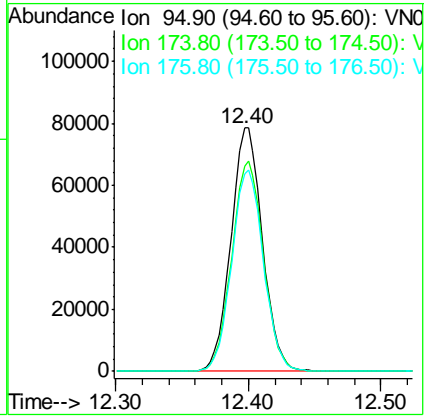




#62  
 4-Bromofluorobenzene  
 Concen: 51.621 ug/l  
 RT: 12.40 min Scan# 3304  
 Delta R.T. 0.00 min  
 Lab File: VN059972.D  
 Acq: 3 Feb 2020 14:17

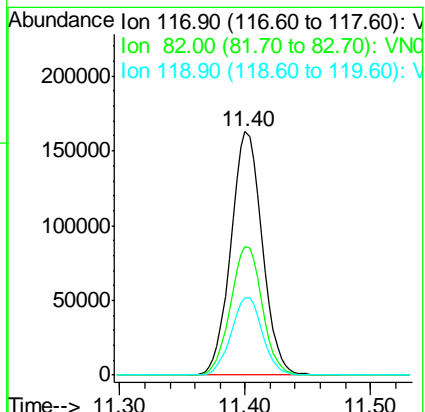
Instrument :  
 MSVOA\_N  
 ClientSampled :  
 SU-02-013120

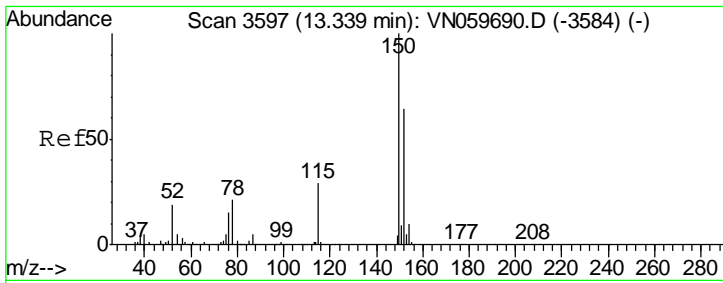
Tgt Ion	Resp	Lower	Upper
95	129599		
174	86.9	0.0	151.4
176	83.4	0.0	146.0



#63  
 Chlorobenzene-d5  
 Concen: 50.000 ug/l  
 RT: 11.40 min Scan# 2994  
 Delta R.T. 0.00 min  
 Lab File: VN059972.D  
 Acq: 3 Feb 2020 14:17

Tgt Ion	Resp	Lower	Upper
117	282278		
82	52.8	45.9	68.9
119	31.8	25.5	38.3





#72  
 1,4-Dichlorobenzene-d4  
 Concen: 50.000 ug/l  
 RT: 13.34 min Scan# 3598  
 Delta R.T. 0.00 min  
 Lab File: VN059972.D  
 Acq: 3 Feb 2020 14:17

Instrument : MSVOA\_N  
 ClientSampled : SU-02-013120

Tot Ion	Resp	Lower	Upper
152	127881		
115	57.4	30.3	90.9
150	156.4	0.0	345.2

