

Data Path : Z:\voasrv\HPCHEM1\MSVOA_N\Data\VN020325\
 Data File : VN085629.D
 Acq On : 03 Feb 2025 18:01
 Operator : JC\MD
 Sample : PB166424ZHE#08
 Misc : 5.0mL/MSVOA_N/WATER
 ALS Vial : 14 Sample Multiplier: 1

Instrument :
 MSVOA_N
 ClientSampleId :
 PB166424ZHE#08

Quant Time: Feb 04 00:59:49 2025
 Quant Method : Z:\voasrv\HPCHEM1\MSVOA_N\methods\82N011425W.M
 Quant Title : SW846 8260
 QLast Update : Wed Jan 15 02:16:08 2025
 Response via : Initial Calibration

Compound	R.T.	QIon	Response	Conc	Units	Dev(Min)

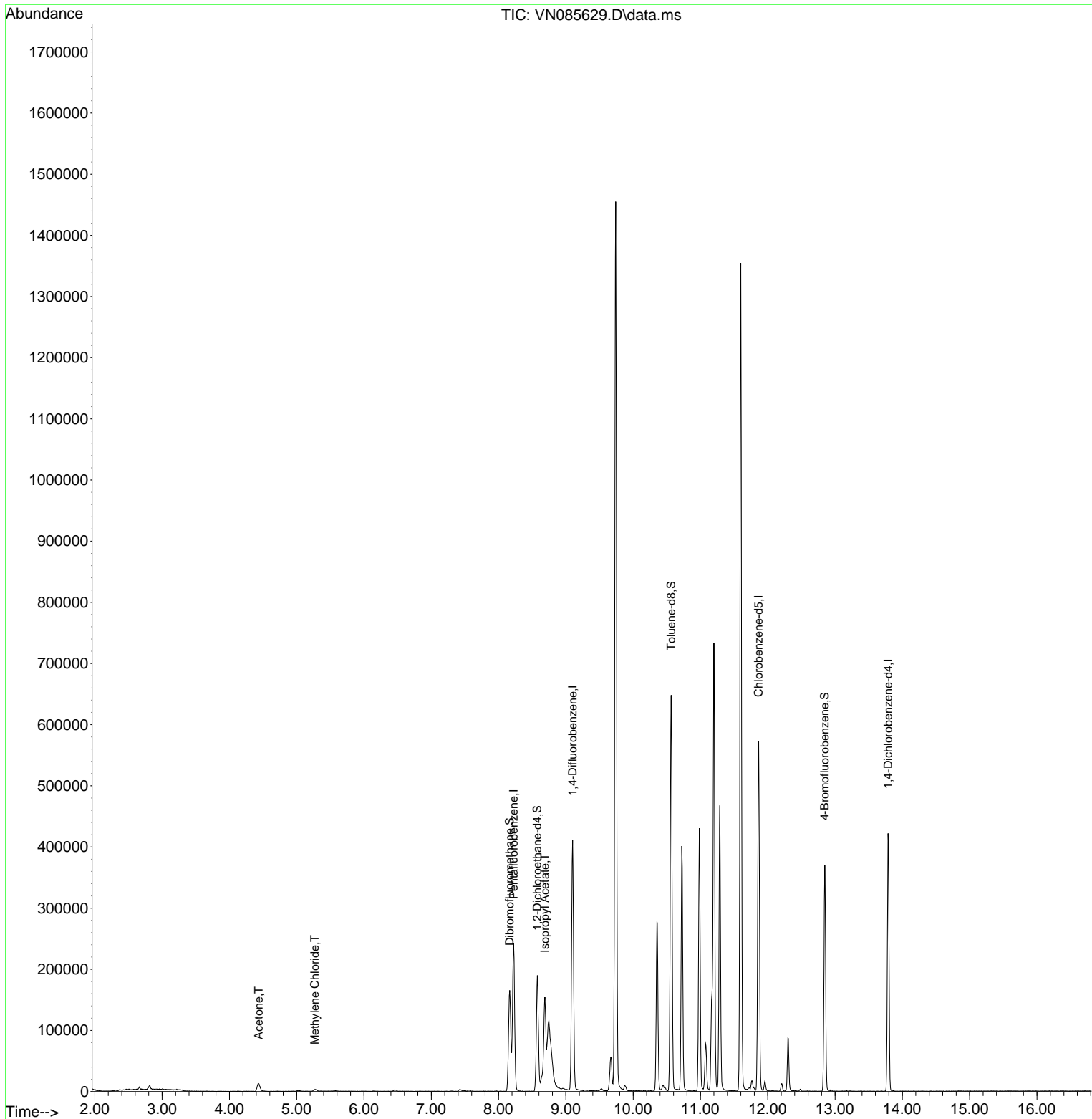
Internal Standards						
1) Pentafluorobenzene	8.224	168	165075	50.000	ug/l	0.00
34) 1,4-Difluorobenzene	9.100	114	350437	50.000	ug/l	0.00
63) Chlorobenzene-d5	11.865	117	322910	50.000	ug/l	0.00
72) 1,4-Dichlorobenzene-d4	13.788	152	112899	50.000	ug/l	0.00
System Monitoring Compounds						
33) 1,2-Dichloroethane-d4	8.576	65	144583	54.260	ug/l	0.00
Spiked Amount	50.000	Range	74 - 125	Recovery	=	108.520%
35) Dibromofluoromethane	8.165	113	120003	49.360	ug/l	0.00
Spiked Amount	50.000	Range	75 - 124	Recovery	=	98.720%
50) Toluene-d8	10.565	98	451815	52.306	ug/l	0.00
Spiked Amount	50.000	Range	86 - 113	Recovery	=	104.620%
62) 4-Bromofluorobenzene	12.847	95	124312	42.071	ug/l	0.00
Spiked Amount	50.000	Range	77 - 121	Recovery	=	84.140%
Target Compounds						
						Qvalue
16) Acetone	4.436	43	24942	28.970	ug/l	93
20) Methylene Chloride	5.271	84	2542	1.193	ug/l #	65
43) Isopropyl Acetate	8.688	43	184853	33.497	ug/l #	85

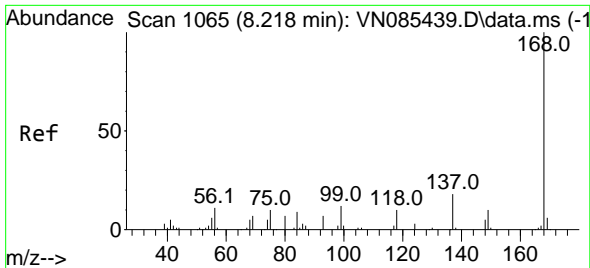
(#) = qualifier out of range (m) = manual integration (+) = signals summed

Data Path : Z:\voasrv\HPCHEM1\MSVOA_N\Data\VN020325\
 Data File : VN085629.D
 Acq On : 03 Feb 2025 18:01
 Operator : JC\MD
 Sample : PB166424ZHE#08
 Misc : 5.0mL/MSVOA_N/WATER
 ALS Vial : 14 Sample Multiplier: 1

Instrument :
 MSVOA_N
 ClientSampleId :
 PB166424ZHE#08

Quant Time: Feb 04 00:59:49 2025
 Quant Method : Z:\voasrv\HPCHEM1\MSVOA_N\methods\82N011425W.M
 Quant Title : SW846 8260
 QLast Update : Wed Jan 15 02:16:08 2025
 Response via : Initial Calibration

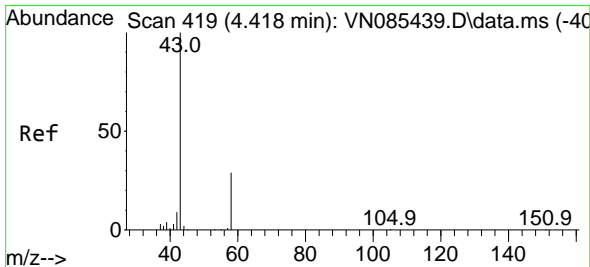
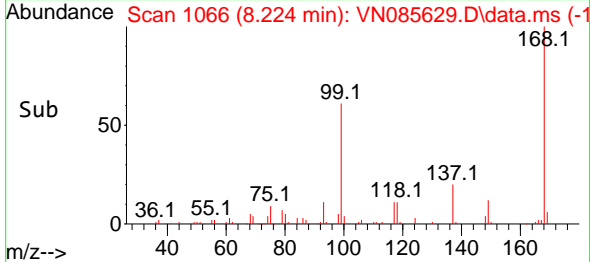
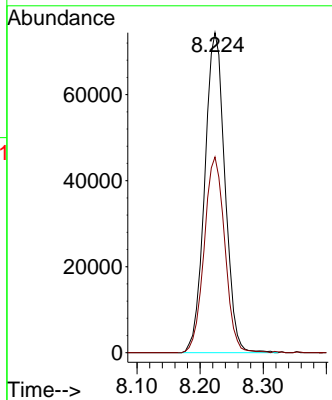
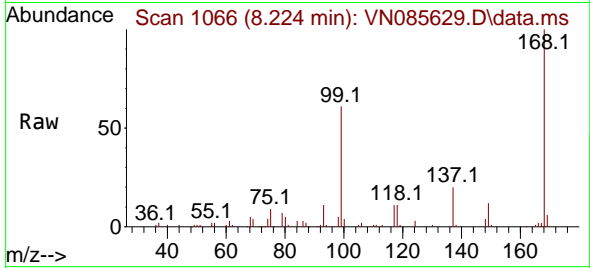




#1
 Pentafluorobenzene
 Concen: 50.000 ug/l
 RT: 8.224 min Scan# 10
 Delta R.T. 0.006 min
 Lab File: VN085629.D
 Acq: 03 Feb 2025 18:01

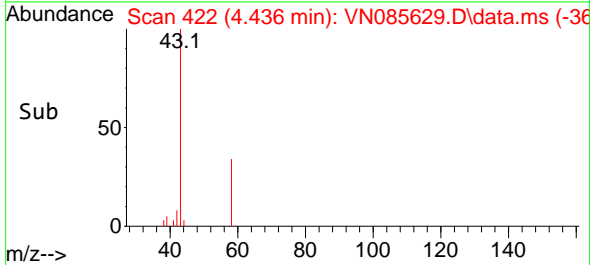
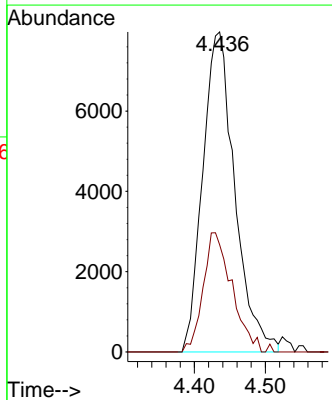
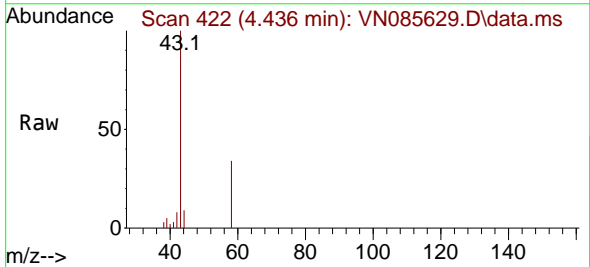
Instrument :
 MSVOA_N
 ClientSampleId :
 PB166424ZHE#08

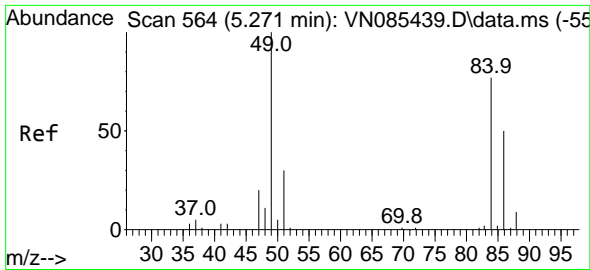
Tgt Ion:168 Resp: 165075
 Ion Ratio Lower Upper
 168 100
 99 61.2 53.6 80.4



#16
 Acetone
 Concen: 28.970 ug/l
 RT: 4.436 min Scan# 422
 Delta R.T. 0.017 min
 Lab File: VN085629.D
 Acq: 03 Feb 2025 18:01

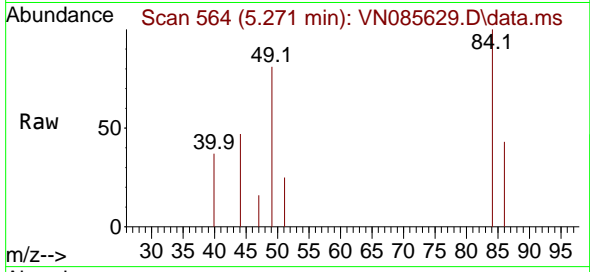
Tgt Ion: 43 Resp: 24942
 Ion Ratio Lower Upper
 43 100
 58 33.5 23.8 35.6





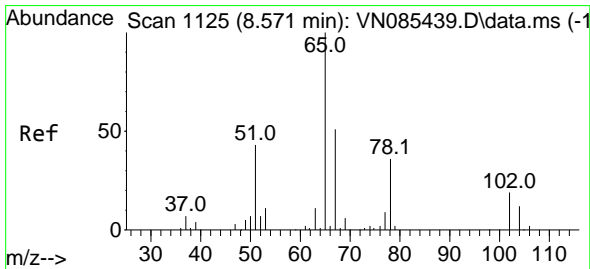
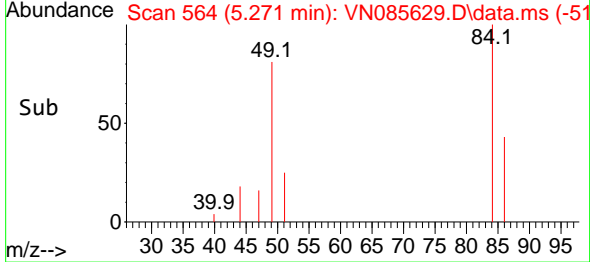
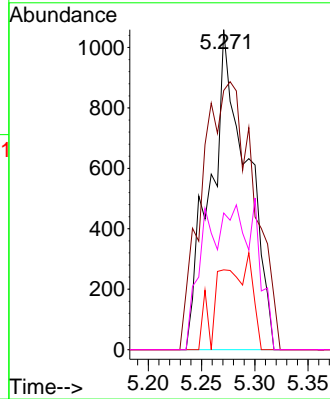
#20
 Methylene Chloride
 Concen: 1.193 ug/l
 RT: 5.271 min Scan# 50
 Delta R.T. -0.000 min
 Lab File: VN085629.D
 Acq: 03 Feb 2025 18:01

Instrument : MSVOA_N
 ClientSampleId : PB166424ZHE#08



Tgt Ion: 84 Resp: 2542

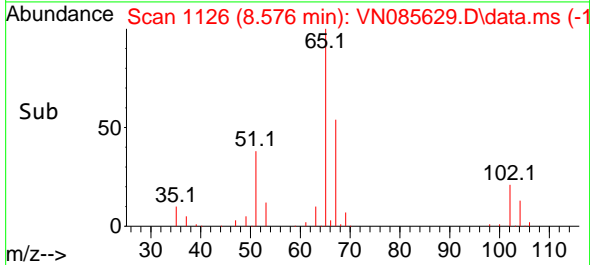
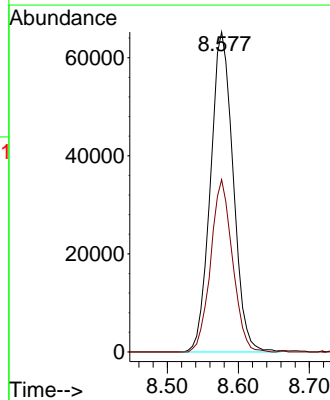
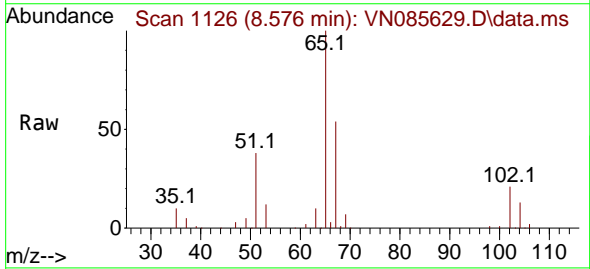
Ion	Ratio	Lower	Upper
84	100		
49	81.0	104.1	156.1#
51	24.9	31.0	46.4#
86	42.7	51.9	77.9#

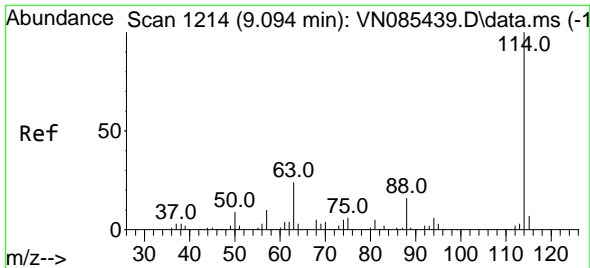


#33
 1,2-Dichloroethane-d4
 Concen: 54.260 ug/l
 RT: 8.576 min Scan# 1126
 Delta R.T. 0.006 min
 Lab File: VN085629.D
 Acq: 03 Feb 2025 18:01

Tgt Ion: 65 Resp: 144583

Ion	Ratio	Lower	Upper
65	100		
67	51.8	0.0	101.6



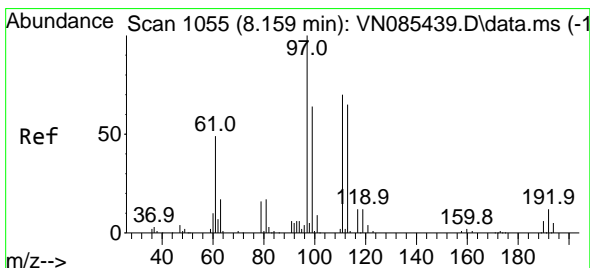
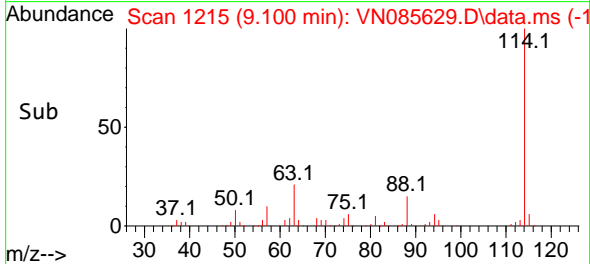
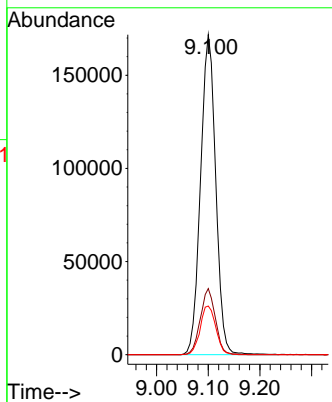
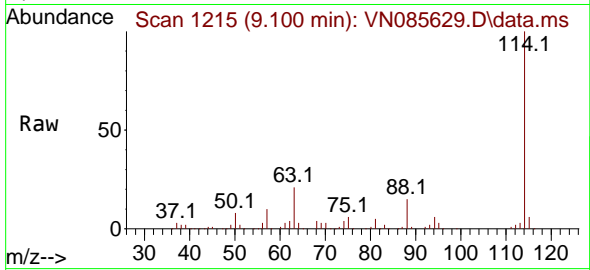


#34
 1,4-Difluorobenzene
 Concen: 50.000 ug/l
 RT: 9.100 min Scan# 11
 Delta R.T. 0.006 min
 Lab File: VN085629.D
 Acq: 03 Feb 2025 18:01

Instrument :
 MSVOA_N
 ClientSampleId :
 PB166424ZHE#08

Tgt Ion:114 Resp: 350437

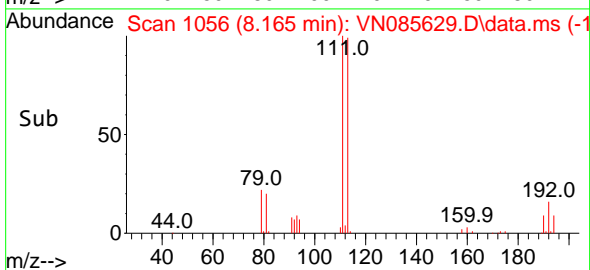
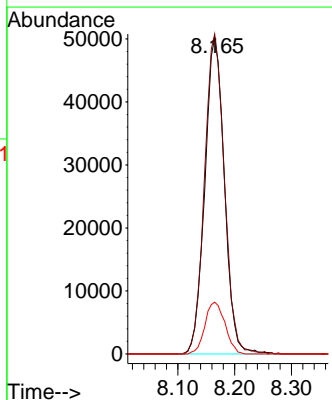
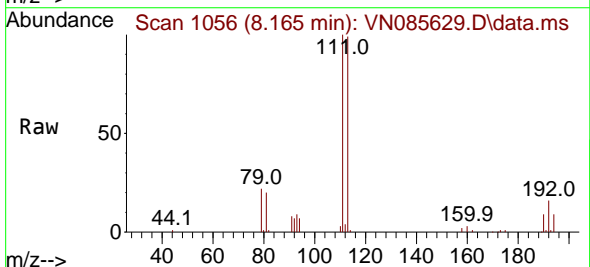
Ion	Ratio	Lower	Upper
114	100		
63	20.7	0.0	47.6
88	15.2	0.0	32.6

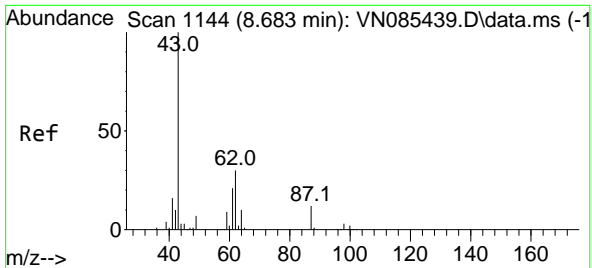


#35
 Dibromofluoromethane
 Concen: 49.360 ug/l
 RT: 8.165 min Scan# 1056
 Delta R.T. 0.006 min
 Lab File: VN085629.D
 Acq: 03 Feb 2025 18:01

Tgt Ion:113 Resp: 120003

Ion	Ratio	Lower	Upper
113	100		
111	102.4	82.7	124.1
192	16.7	14.3	21.5



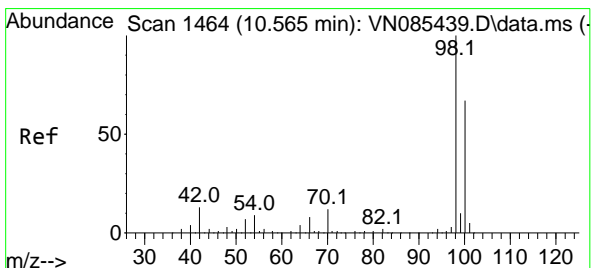
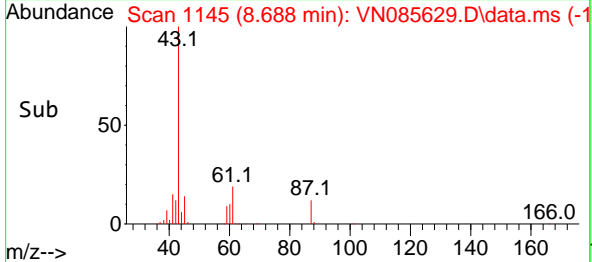
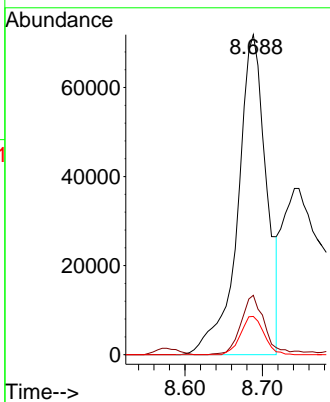
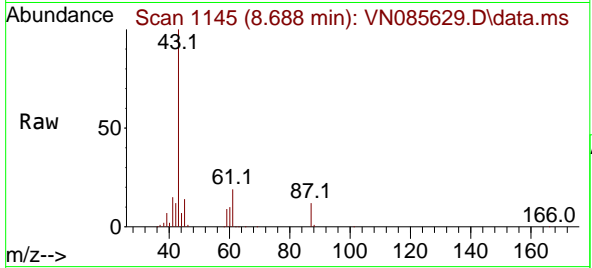


#43
 Isopropyl Acetate
 Concen: 33.497 ug/l
 RT: 8.688 min Scan# 1145
 Delta R.T. 0.006 min
 Lab File: VN085629.D
 Acq: 03 Feb 2025 18:01

Instrument : MSVOA_N
 ClientSampleId : PB166424ZHE#08

Tgt Ion: 43 Resp: 184853

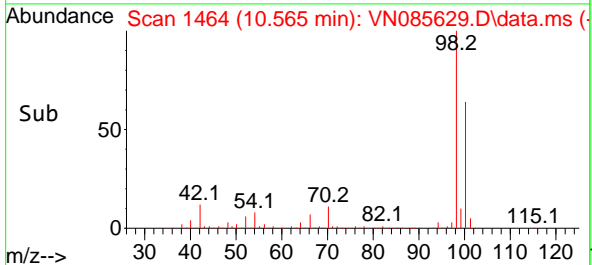
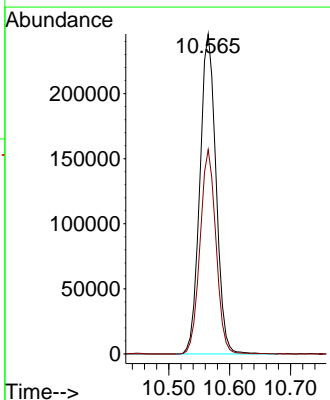
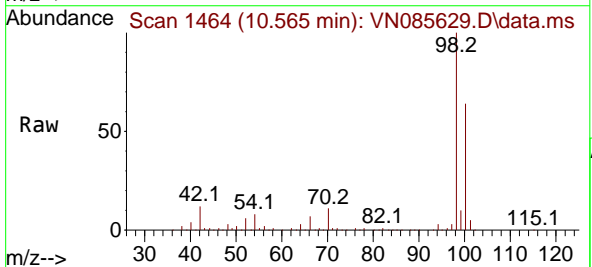
Ion	Ratio	Lower	Upper
43	100		
61	15.9	20.7	31.1#
87	9.7	9.8	14.8#

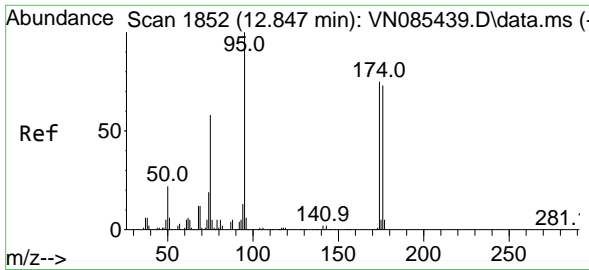


#50
 Toluene-d8
 Concen: 52.306 ug/l
 RT: 10.565 min Scan# 1464
 Delta R.T. -0.000 min
 Lab File: VN085629.D
 Acq: 03 Feb 2025 18:01

Tgt Ion: 98 Resp: 451815

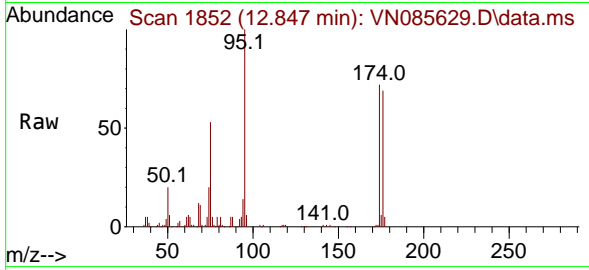
Ion	Ratio	Lower	Upper
98	100		
100	62.9	52.2	78.4



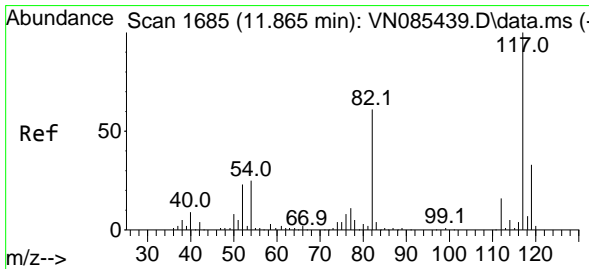
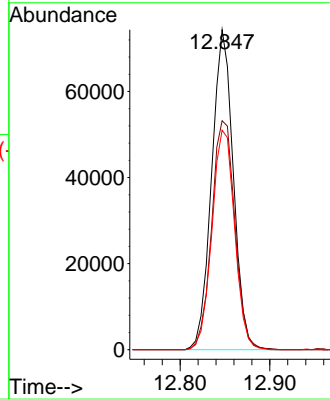
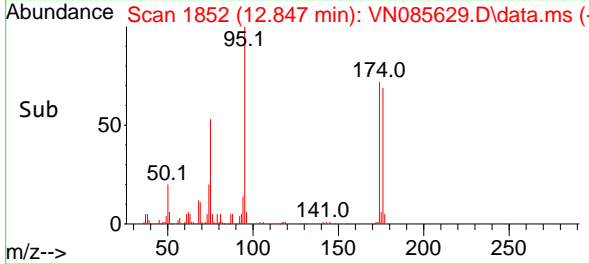


#62
 4-Bromofluorobenzene
 Concen: 42.071 ug/l
 RT: 12.847 min Scan# 1852
 Delta R.T. -0.000 min
 Lab File: VN085629.D
 Acq: 03 Feb 2025 18:01

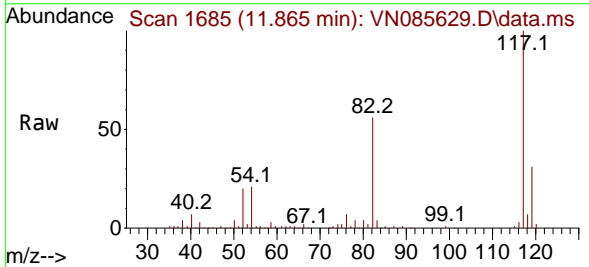
Instrument : MSVOA_N
 ClientSampleId : PB166424ZHE#08



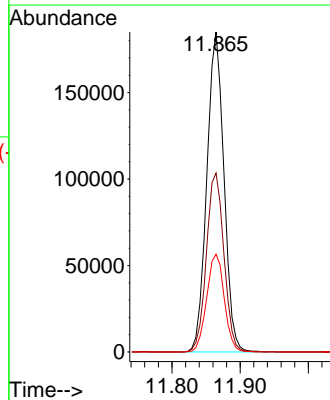
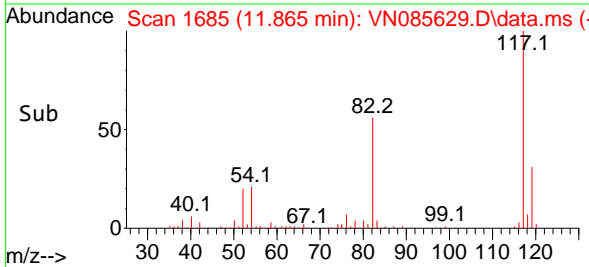
Tgt Ion: 95 Resp: 124312
 Ion Ratio Lower Upper
 95 100
 174 77.0 0.0 145.0
 176 72.0 0.0 142.4

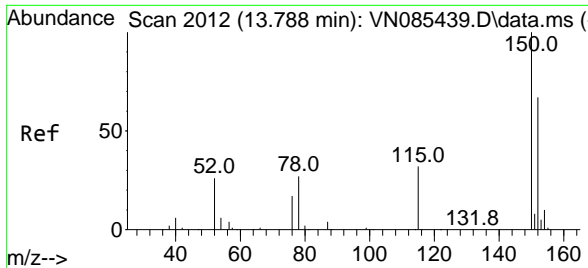


#63
 Chlorobenzene-d5
 Concen: 50.000 ug/l
 RT: 11.865 min Scan# 1685
 Delta R.T. -0.000 min
 Lab File: VN085629.D
 Acq: 03 Feb 2025 18:01



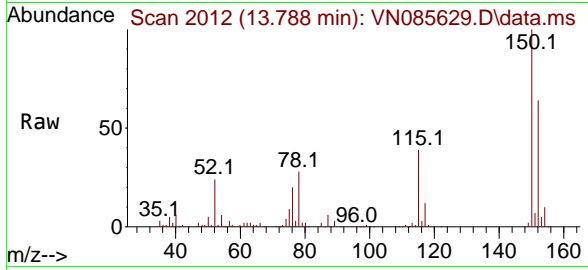
Tgt Ion: 117 Resp: 322910
 Ion Ratio Lower Upper
 117 100
 82 55.9 48.6 72.8
 119 30.6 26.6 39.8





#72
 1,4-Dichlorobenzene-d4
 Concen: 50.000 ug/l
 RT: 13.788 min Scan# 20
 Delta R.T. -0.000 min
 Lab File: VN085629.D
 Acq: 03 Feb 2025 18:01

Instrument : MSVOA_N
 ClientSampleId : PB166424ZHE#08



Tgt Ion	Resp	Lower	Upper
152	112899		
115	61.0	31.1	93.3
150	158.2	0.0	343.6

