

Data Path : Z:\VOASRV\HPCHEM1\MSVOA N\DATA\VN020619\
 Data File : VN053640.D
 Acq On : 6 Feb 2019 17:37
 Operator : JC/SP
 Sample : K1356-02
 Misc : 5.00mL/MSVOA N/WATER
 ALS Vial : 18 Sample Multiplier: 28

Instrument :
 MSVOA_N
 ClientSampleId :
 SU-01-020519-A

Quant Time: Feb 07 04:51:46 2019
 Quant Method : Z:\VOASRV\HPCHEM1\MSVOA_N\METHODS\82N013019W.M
 Quant Title : SW846 8260
 QLast Update : Fri Feb 01 09:11:52 2019
 Response via : Initial Calibration

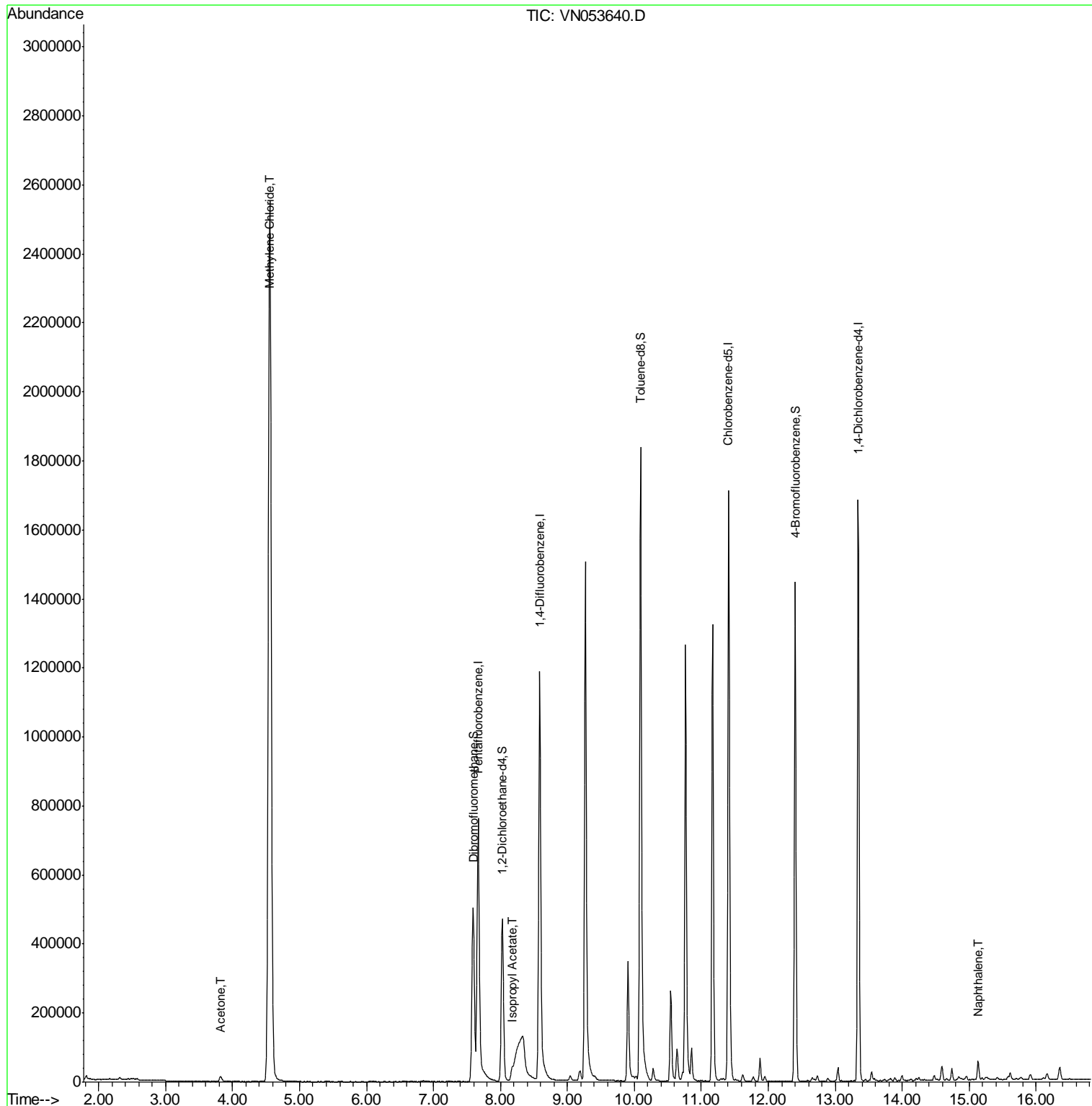
Internal Standards	R.T.	QIon	Response	Conc	Units	Dev(Min)
1) Pentafluorobenzene	7.67	168	775236	50.00	ug/l	0.00
34) 1,4-Difluorobenzene	8.59	114	1263839	50.00	ug/l	0.00
63) Chlorobenzene-d5	11.41	117	1149330	50.00	ug/l	0.00
72) 1,4-Dichlorobenzene-d4	13.35	152	498655	50.00	ug/l	0.00
System Monitoring Compounds						
33) 1,2-Dichloroethane-d4	8.03	65	404257	51.98	ug/l	0.00
Spiked Amount	50.000		Recovery	=	103.96%	
35) Dibromofluoromethane	7.59	113	397080	49.72	ug/l	0.00
Spiked Amount	50.000		Recovery	=	99.44%	
50) Toluene-d8	10.09	98	1518639	50.65	ug/l	0.00
Spiked Amount	50.000		Recovery	=	101.30%	
62) 4-Bromofluorobenzene	12.40	95	507236	50.72	ug/l	0.00
Spiked Amount	50.000		Recovery	=	101.44%	
Target Compounds						
16) Acetone	3.82	43	24946	12.505	ug/l	96
20) Methylene Chloride	4.55	84	2040489	243.809	ug/l	98
43) Isopropyl Acetate	8.17	43	39821	3.241	ug/l #	79
95) Naphthalene	15.13	128	47837	3.844	ug/l	98

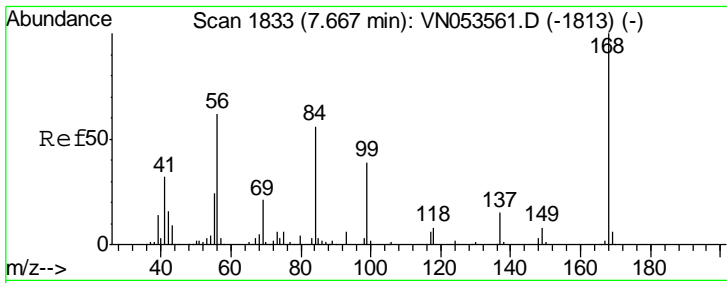
(#) = qualifier out of range (m) = manual integration (+) = signals summed

Data Path : Z:\VOASRV\HPCHEM1\MSVOA N\DATA\VN020619\
 Data File : VN053640.D
 Acq On : 6 Feb 2019 17:37
 Operator : JC/SP
 Sample : K1356-02
 Misc : 5.00mL/MSVOA N/WATER
 ALS Vial : 18 Sample Multiplier: 28

Instrument :
 MSVOA_N
 ClientSampleId :
 SU-01-020519-A

Quant Time: Feb 07 04:51:46 2019
 Quant Method : Z:\VOASRV\HPCHEM1\MSVOA_N\METHODS\82N013019W.M
 Quant Title : SW846 8260
 QLast Update : Fri Feb 01 09:11:52 2019
 Response via : Initial Calibration

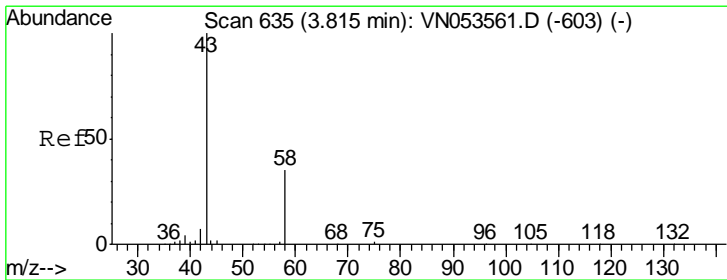
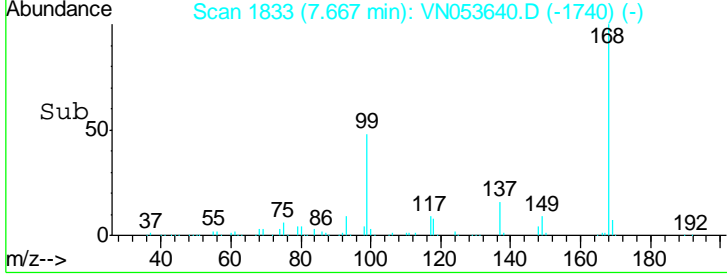
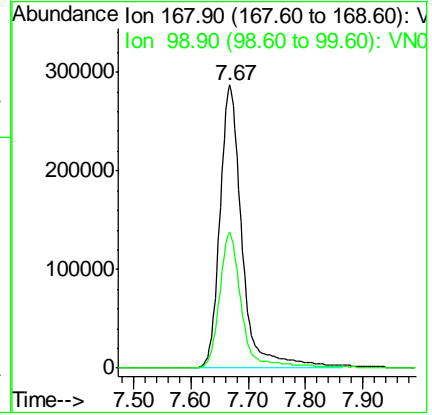
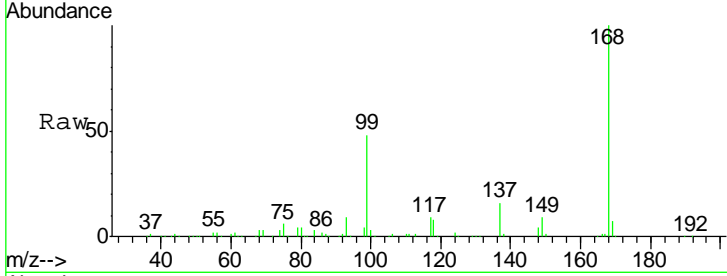




#1
 Pentafluorobenzene
 Concen: 50.000 ug/l
 RT: 7.67 min Scan# 1833
 Delta R.T. 0.00 min
 Lab File: VN053640.D
 Acq: 6 Feb 2019 17:37

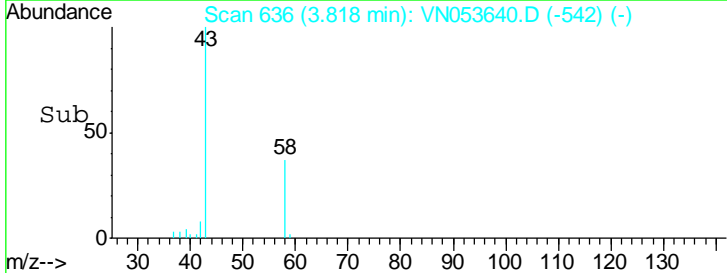
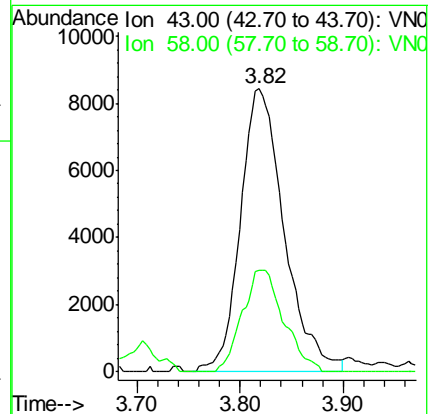
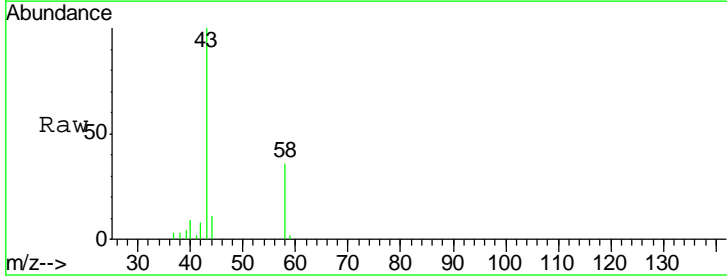
Instrument :
 MSVOA_N
 ClientSampled :
 SU-01-020519-A

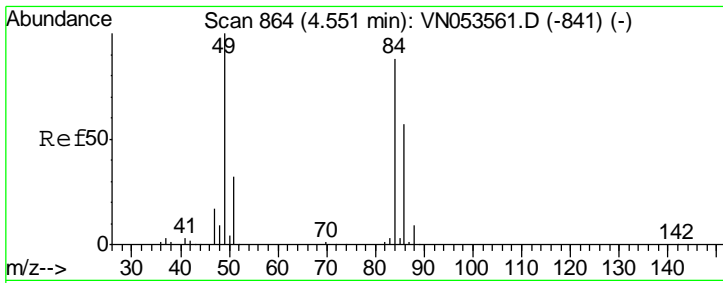
Tgt Ion: 168 Resp: 775236
 Ion Ratio Lower Upper
 168 100
 99 48.0 39.1 58.7



#16
 Acetone
 Concen: 12.505 ug/l
 RT: 3.82 min Scan# 636
 Delta R.T. 0.00 min
 Lab File: VN053640.D
 Acq: 6 Feb 2019 17:37

Tgt Ion: 43 Resp: 24946
 Ion Ratio Lower Upper
 43 100
 58 36.0 27.1 40.7



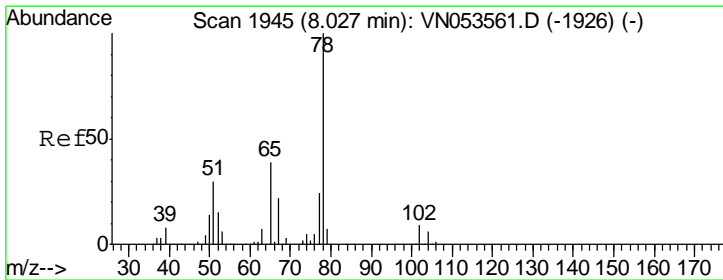
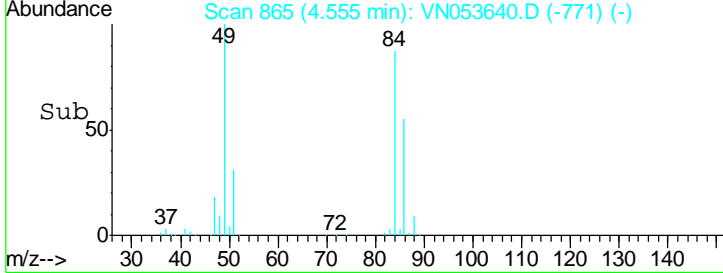
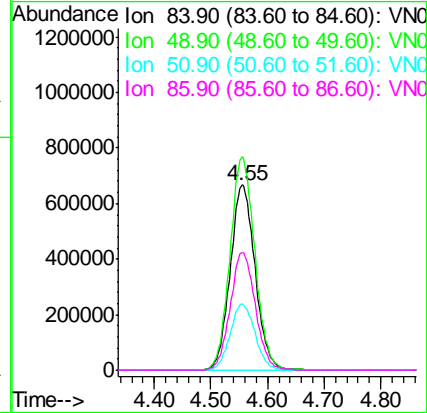
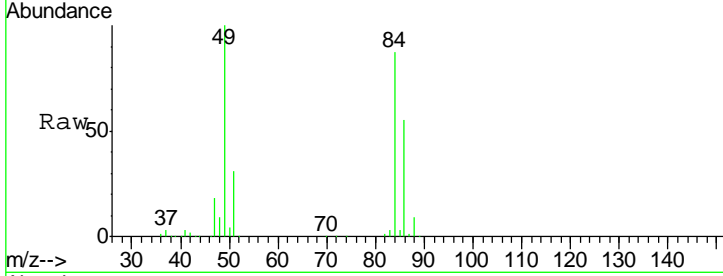


#20
 Methylene Chloride
 Concen: 243.809 ug/l
 RT: 4.55 min Scan# 865
 Delta R.T. 0.00 min
 Lab File: VN053640.D
 Acq: 6 Feb 2019 17:37

Instrument :
 MSVOA_N
 ClientSampled :
 SU-01-020519-A

Tgt Ion: 84 Resp: 2040489

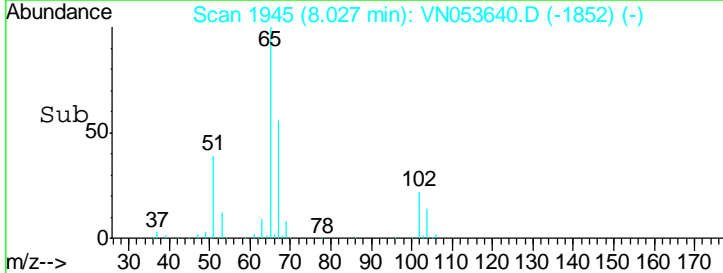
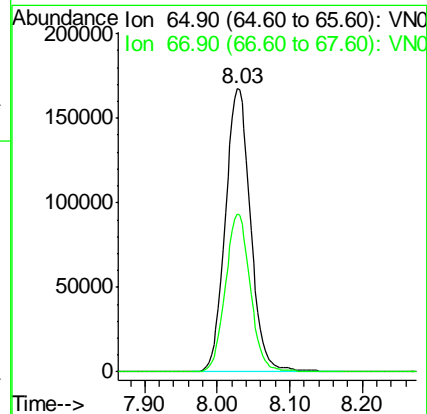
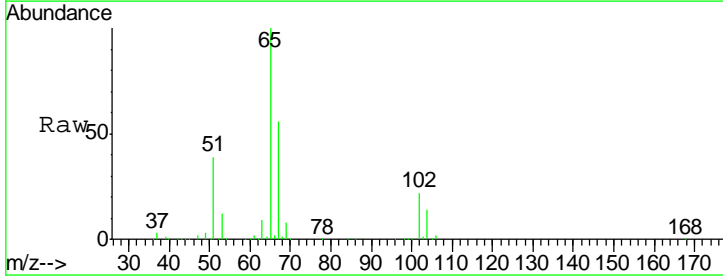
Ion	Ratio	Lower	Upper
84	100		
49	115.4	94.3	141.5
51	35.9	29.4	44.2
86	63.8	51.4	77.0

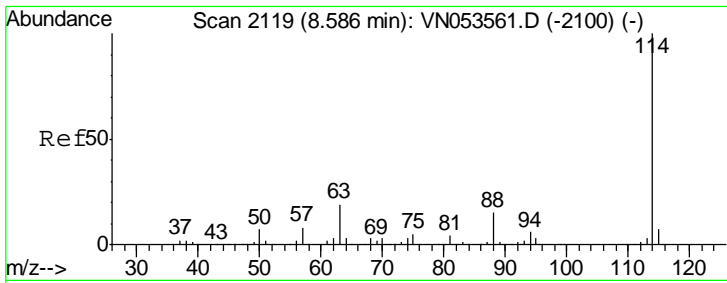


#33
 1,2-Dichloroethane-d4
 Concen: N.D. ug/l
 RT: 8.03 min Scan# 1945
 Delta R.T. 0.00 min
 Lab File: VN053640.D
 Acq: 6 Feb 2019 17:37

Tgt Ion: 65 Resp: 404257

Ion	Ratio	Lower	Upper
65	100		
67	55.2	0.0	111.2

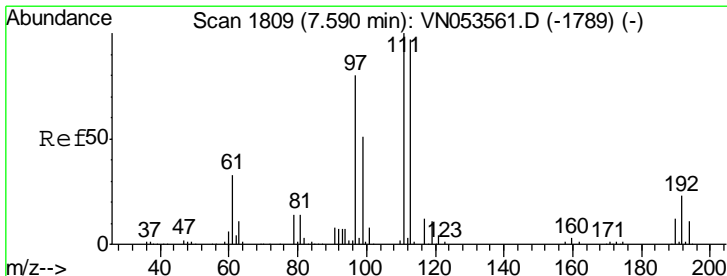
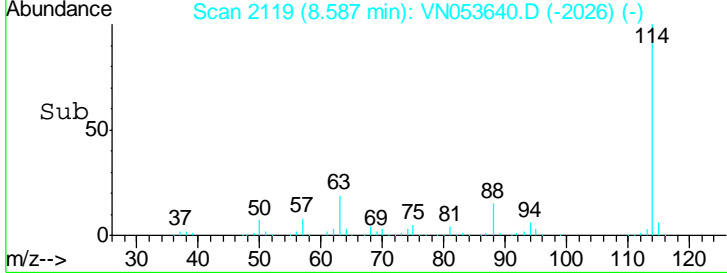
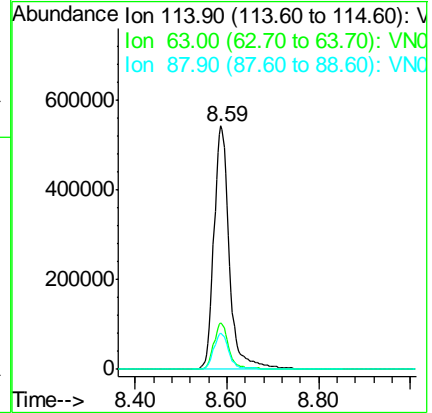
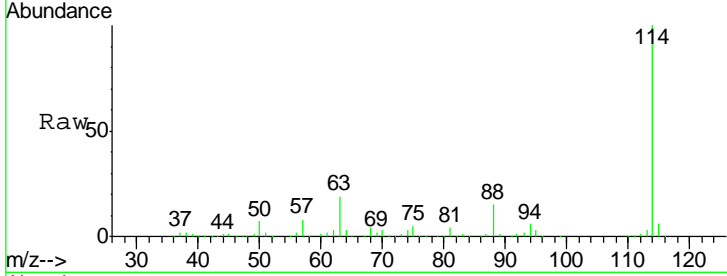




#34
 1,4-Difluorobenzene
 Concen: 50.000 ug/l
 RT: 8.59 min Scan# 2119
 Delta R.T. 0.00 min
 Lab File: VN053640.D
 Acq: 6 Feb 2019 17:37

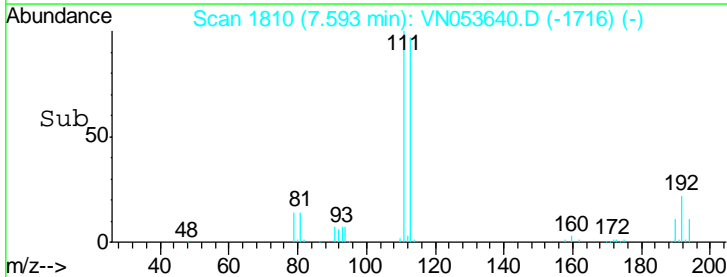
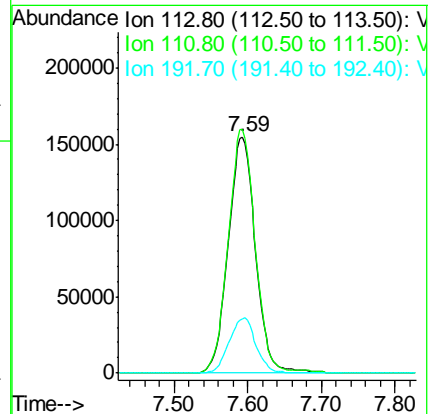
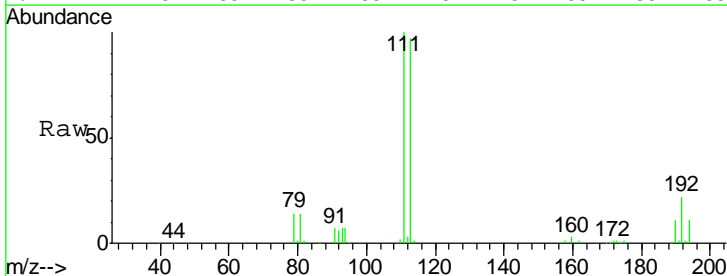
Instrument :
 MSVOA_N
 ClientSampled :
 SU-01-020519-A

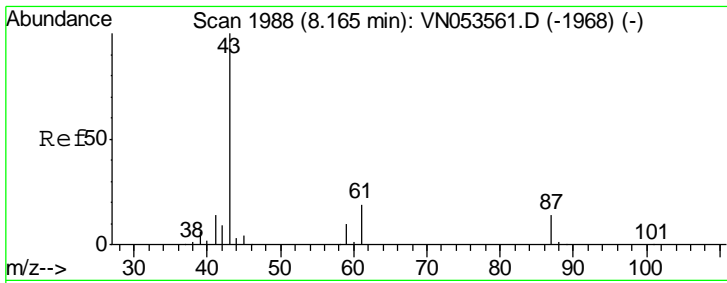
Tgt Ion	Resp	Lower	Upper
114	1263839		
63	19.2	0.0	38.6
88	14.9	0.0	30.4



#35
 Dibromofluoromethane
 Concen: 50.000 ug/l
 RT: 7.59 min Scan# 1810
 Delta R.T. 0.00 min
 Lab File: VN053640.D
 Acq: 6 Feb 2019 17:37

Tgt Ion	Resp	Lower	Upper
113	397080		
111	102.4	81.1	121.7
192	23.0	18.2	27.2

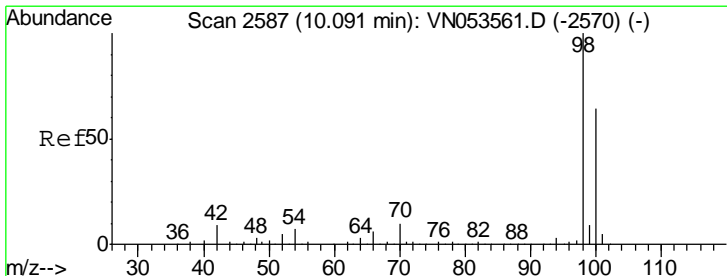
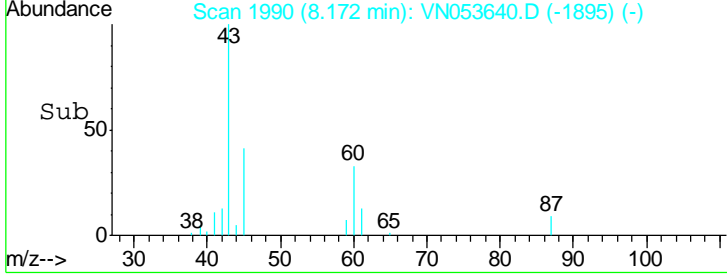
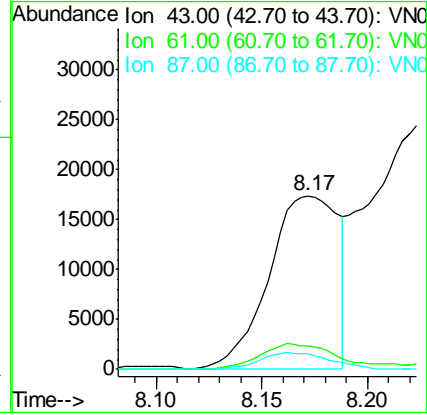
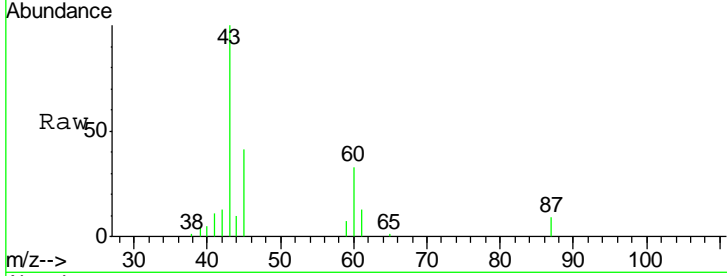




#43
 Isopropyl Acetate
 Concen: 3.241 ug/l
 RT: 8.17 min Scan# 1990
 Delta R.T. 0.01 min
 Lab File: VN053640.D
 Acq: 6 Feb 2019 17:37

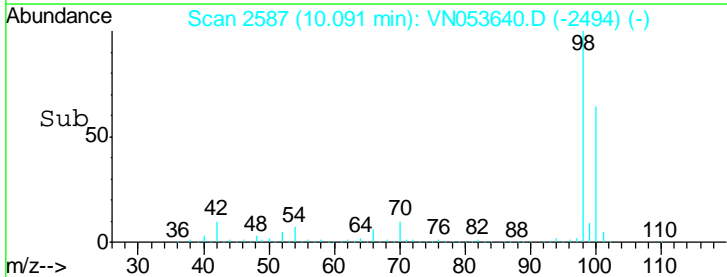
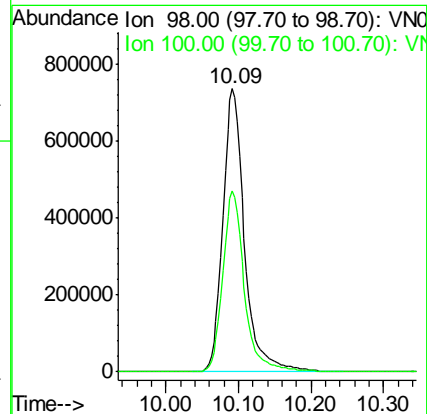
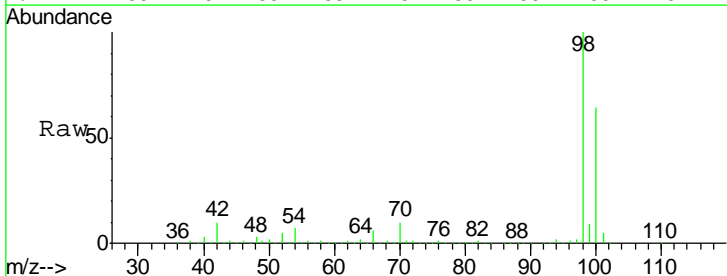
Instrument :
 MSVOA_N
 ClientSampled :
 SU-01-020519-A

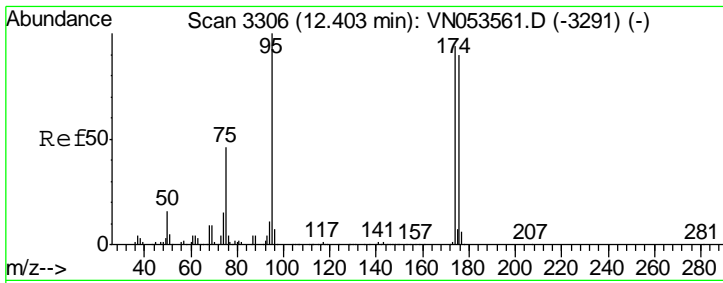
Tgt Ion	Resp	Lower	Upper
43	39821		
61	16.2	23.9	35.9#
87	9.8	11.0	16.6#



#50
 Toluene-d8
 Concen: N.D. ug/l
 RT: 10.09 min Scan# 2587
 Delta R.T. 0.00 min
 Lab File: VN053640.D
 Acq: 6 Feb 2019 17:37

Tgt Ion	Resp	Lower	Upper
98	1518639		
100	64.0	51.4	77.0

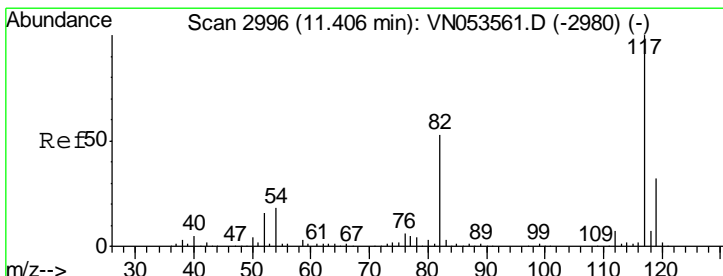
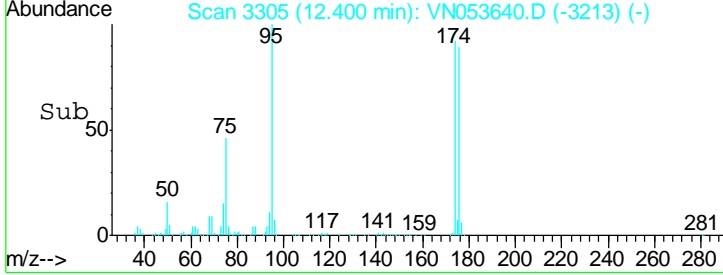
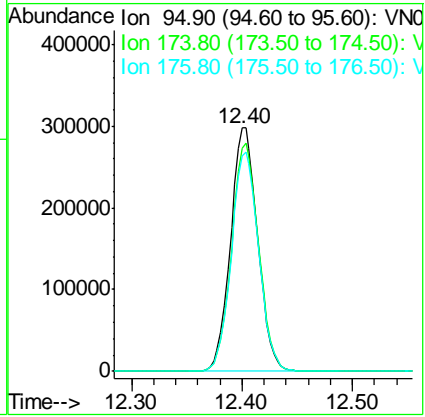
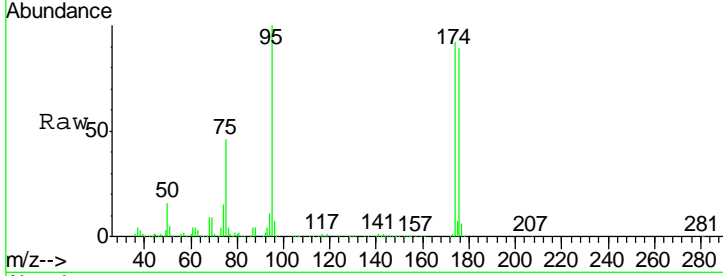




#62
 4-Bromofluorobenzene
 Concen: N.D. ug/l
 RT: 12.40 min Scan# 3305
 Delta R.T. -0.00 min
 Lab File: VN053640.D
 Acq: 6 Feb 2019 17:37

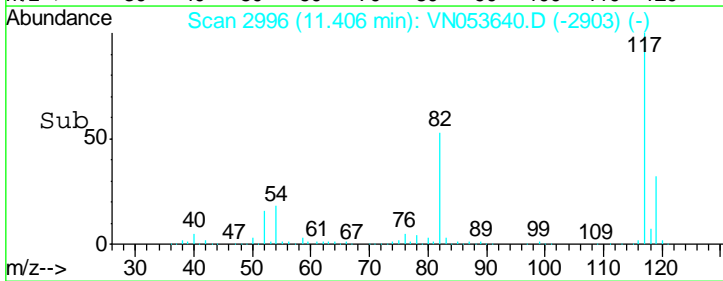
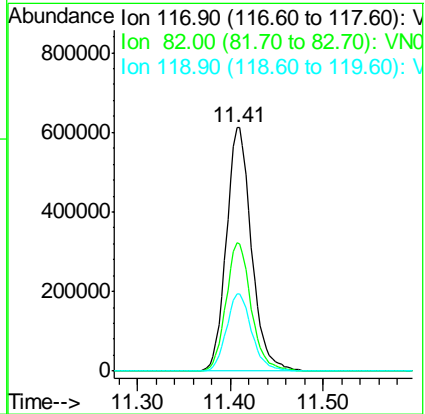
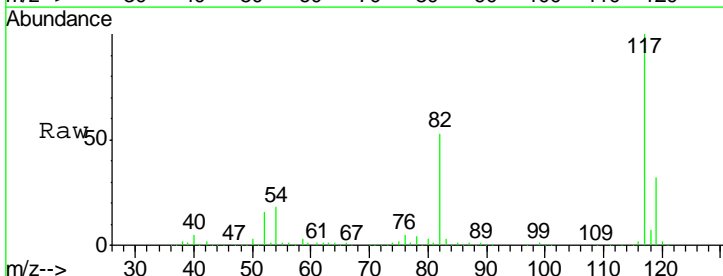
Instrument : MSVOA_N
 ClientSampled : SU-01-020519-A

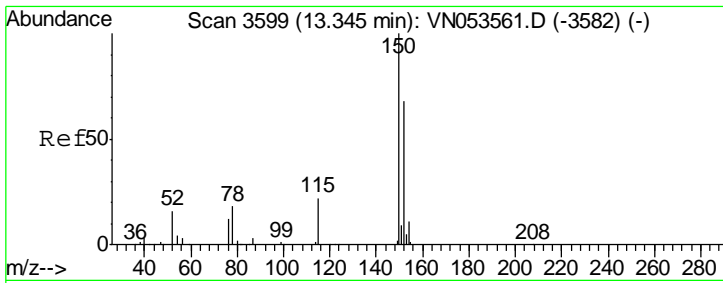
Tgt Ion	Resp	Lower	Upper
95	100		
174	93.7	0.0	183.2
176	90.5	0.0	177.4



#63
 Chlorobenzene-d5
 Concen: 50.000 ug/l
 RT: 11.41 min Scan# 2996
 Delta R.T. 0.00 min
 Lab File: VN053640.D
 Acq: 6 Feb 2019 17:37

Tgt Ion	Resp	Lower	Upper
117	100		
82	52.7	42.9	64.3
119	31.8	26.0	39.0

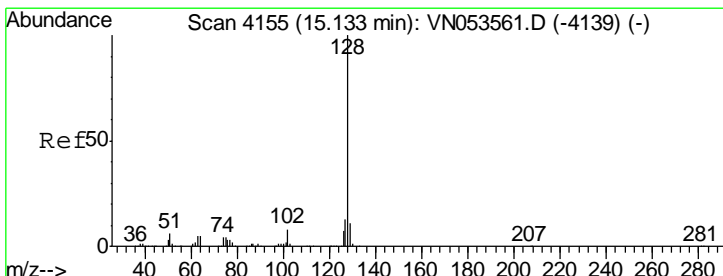
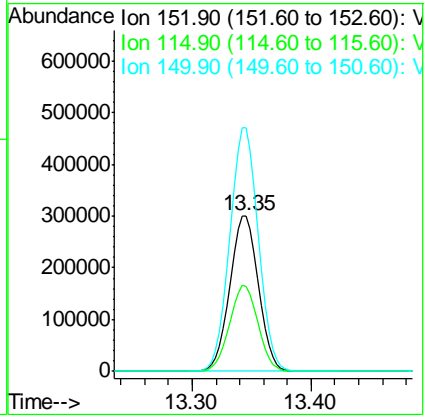
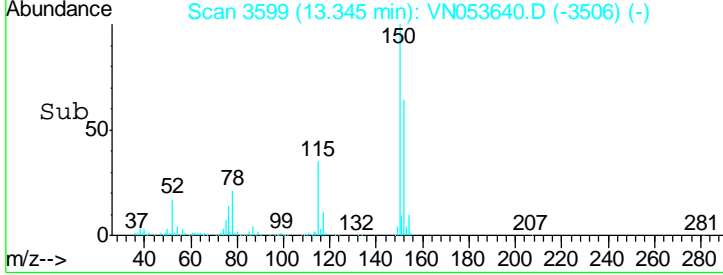
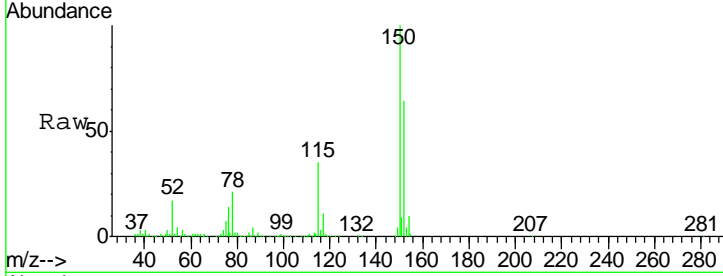




#72
 1,4-Dichlorobenzene-d4
 Concen: 50.000 ug/l
 RT: 13.35 min Scan# 3599
 Delta R.T. 0.00 min
 Lab File: VN053640.D
 Acq: 6 Feb 2019 17:37

Instrument : MSVOA_N
 ClientSampled : SU-01-020519-A

Tgt Ion	Resp	Lower	Upper
152	100		
115	55.3	27.8	83.4
150	156.4	0.0	349.0



#95
 Naphthalene
 Concen: 3.844 ug/l
 RT: 15.13 min Scan# 4155
 Delta R.T. 0.00 min
 Lab File: VN053640.D
 Acq: 6 Feb 2019 17:37

Tgt Ion	Resp	Lower	Upper
128	100		
127	13.1	10.3	15.5
129	11.9	8.6	13.0

