

Data Path : Z:\VOASRV\HPCHEM1\MSVOA N\DATA\VN020720\  
 Data File : VN060024.D  
 Acq On : 7 Feb 2020 12:21  
 Operator : JC/MD  
 Sample : L1431-09  
 Misc : 5.00mL/MSVOA N/WATER  
 ALS Vial : 9 Sample Multiplier: 1

Instrument :  
 MSVOA\_N  
 ClientSampled :

Quant Time: Feb 07 23:13:05 2020  
 Quant Method : Z:\VOASRV\HPCHEM1\MSVOA\_N\METHODS\82N011320W.M  
 Quant Title : SW846 8260  
 QLast Update : Sat Jan 18 03:09:32 2020  
 Response via : Initial Calibration

Internal Standards	R.T.	QIon	Response	Conc	Units	Dev(Min)
1) Pentafluorobenzene	7.64	168	194732	50.00	ug/l	0.00
34) 1,4-Difluorobenzene	8.57	114	302781	50.00	ug/l	0.00
63) Chlorobenzene-d5	11.40	117	286296	50.00	ug/l	0.00
72) 1,4-Dichlorobenzene-d4	13.34	152	131353	50.00	ug/l	0.00

System Monitoring Compounds

33) 1,2-Dichloroethane-d4	8.00	65	113901	52.67	ug/l	0.00
Spiked Amount	50.000		Recovery	=	105.34%	
35) Dibromofluoromethane	7.57	113	91818	50.85	ug/l	0.00
Spiked Amount	50.000		Recovery	=	101.70%	
50) Toluene-d8	10.08	98	369435	52.81	ug/l	0.00
Spiked Amount	50.000		Recovery	=	105.62%	
62) 4-Bromofluorobenzene	12.40	95	134454	53.31	ug/l	0.00
Spiked Amount	50.000		Recovery	=	106.62%	

Target Compounds

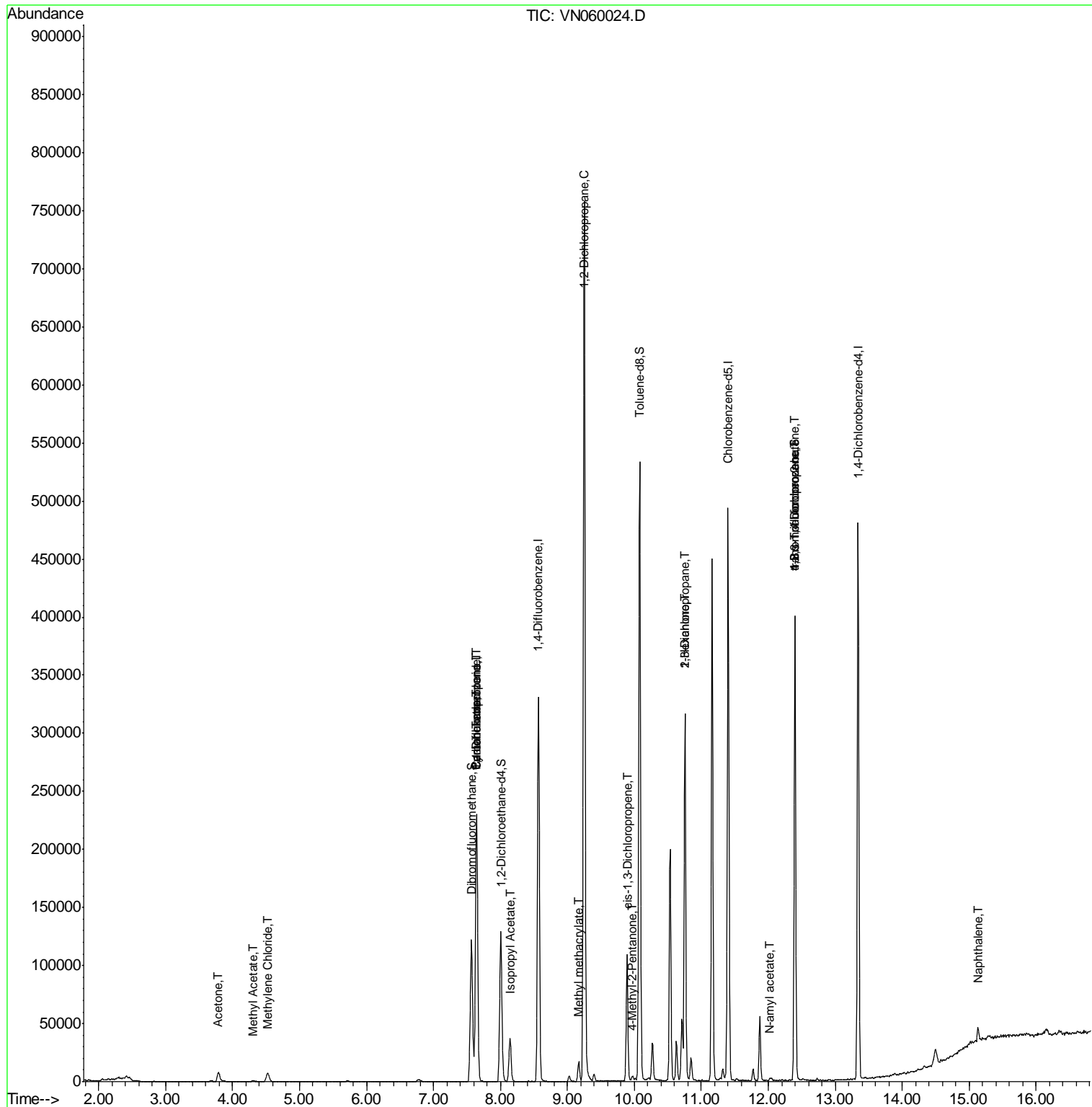
						Qvalue
16) Acetone	3.79	43	15110	10.912	ug/l	93
18) Methyl Acetate	4.31	43	1364	0.540	ug/l #	54
20) Methylene Chloride	4.53	84	6080	1.862	ug/l	89
31) Cyclohexane	7.64	56	3943	1.232	ug/l #	1
36) 1,1-Dichloropropene	7.64	75	14002	5.310	ug/l #	50
38) Carbon Tetrachloride	7.64	117	18238	6.359	ug/l #	16
43) Isopropyl Acetate	8.14	43	43569	10.243	ug/l	92
45) 1,2-Dichloropropane	9.25	63	1015	0.522	ug/l #	44
48) Methyl methacrylate	9.16	41	2411	1.267	ug/l #	13
51) 4-Methyl-2-Pentanone	9.97	43	3344	1.360	ug/l	93
54) cis-1,3-Dichloropropene	9.89	75	19897	6.123	ug/l #	59
57) 1,3-Dichloropropane	10.75	76	3214	1.029	ug/l #	42
59) 2-Hexanone	10.75	43	45816	25.292	ug/l #	54
74) N-amyl acetate	12.02	43	1785	0.478	ug/l #	45
76) 1,2,3-Trichloropropane	12.40	75	68114	30.813	ug/l #	100
81) trans-1,4-Dichloro-2-buten	12.40	75	68114	66.172	ug/l #	11
92) 1,2-Dibromo-3-Chloropropan	14.30	75	129	Below Cal	#	6
95) Naphthalene	15.13	128	10301	1.439	ug/l	99

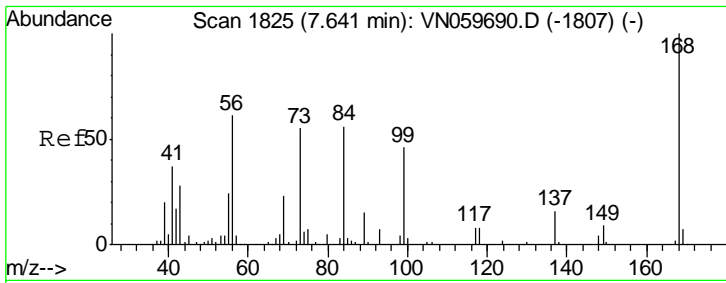
(#) = qualifier out of range (m) = manual integration (+) = signals summed

Data Path : Z:\VOASRV\HPCHEM1\MSVOA N\DATA\VN020720\  
 Data File : VN060024.D  
 Acq On : 7 Feb 2020 12:21  
 Operator : JC/MD  
 Sample : L1431-09  
 Misc : 5.00mL/MSVOA N/WATER  
 ALS Vial : 9 Sample Multiplier: 1

Instrument :  
 MSVOA\_N  
 Client Sampled :

Quant Time: Feb 07 23:13:05 2020  
 Quant Method : Z:\VOASRV\HPCHEM1\MSVOA\_N\METHODS\82N011320W.M  
 Quant Title : SW846 8260  
 QLast Update : Sat Jan 18 03:09:32 2020  
 Response via : Initial Calibration

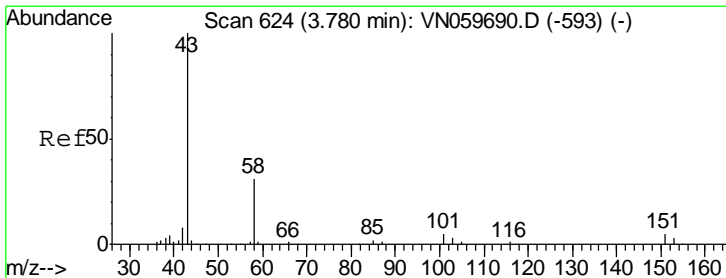
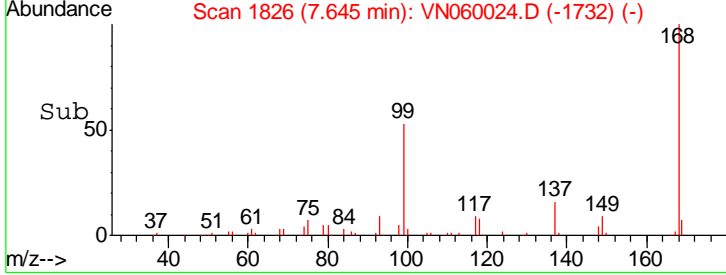
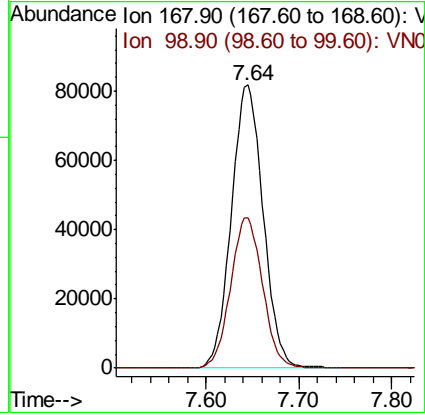
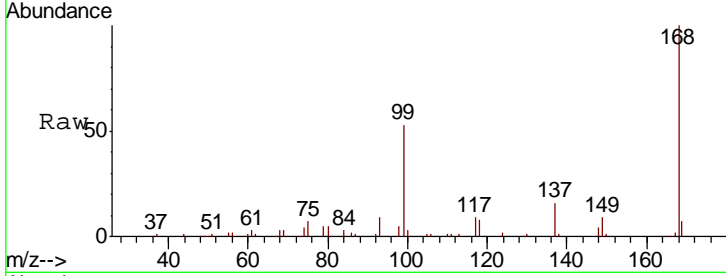




#1  
 Pentafluorobenzene  
 Concen: 50.000 ug/l  
 RT: 7.64 min Scan# 1826  
 Delta R.T. 0.00 min  
 Lab File: VN060024.D  
 Acq: 7 Feb 2020 12:21

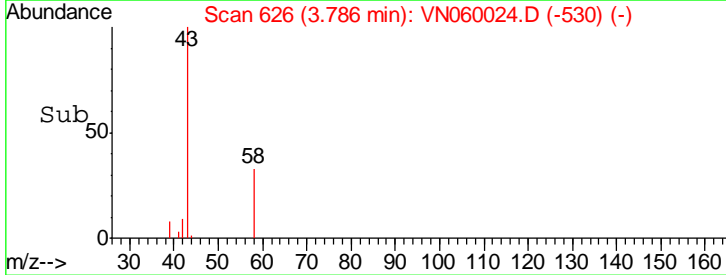
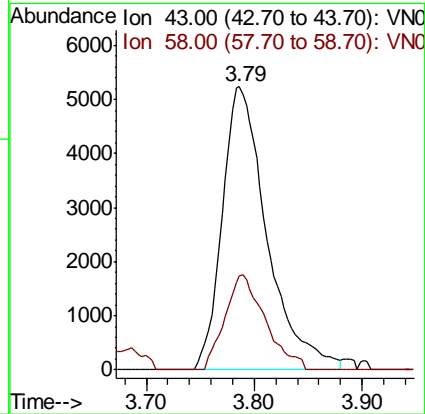
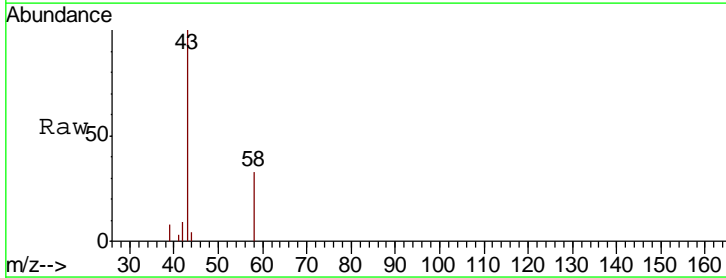
Instrument :  
 MSVOA\_N  
 ClientSampled :

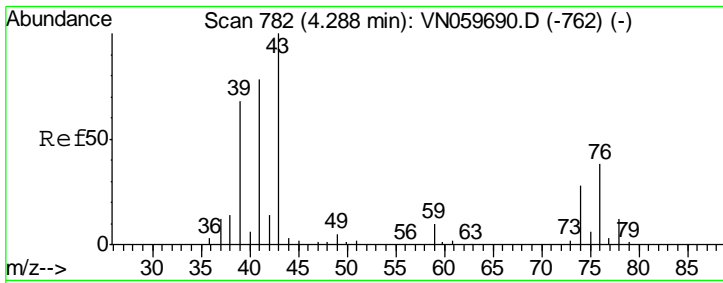
Tgt Ion	Resp	Lower	Upper
168	194732		
99	53.1	48.2	72.4



#16  
 Acetone  
 Concen: 10.912 ug/l  
 RT: 3.79 min Scan# 626  
 Delta R.T. 0.01 min  
 Lab File: VN060024.D  
 Acq: 7 Feb 2020 12:21

Tgt Ion	Resp	Lower	Upper
43	15110		
58	33.1	23.6	35.4

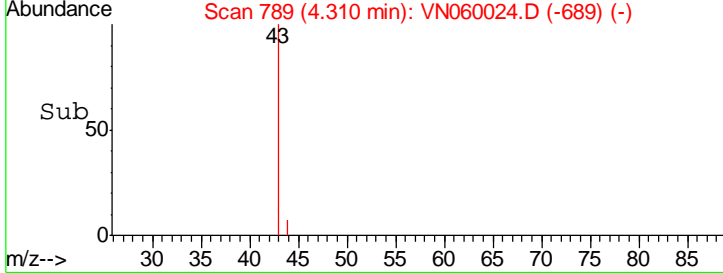
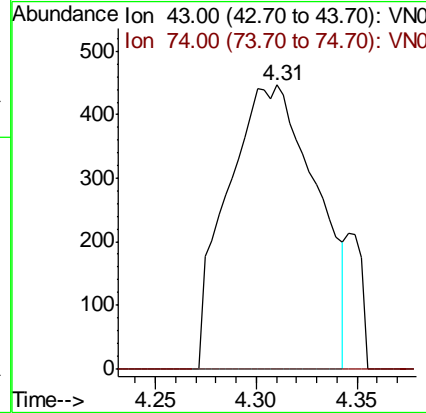
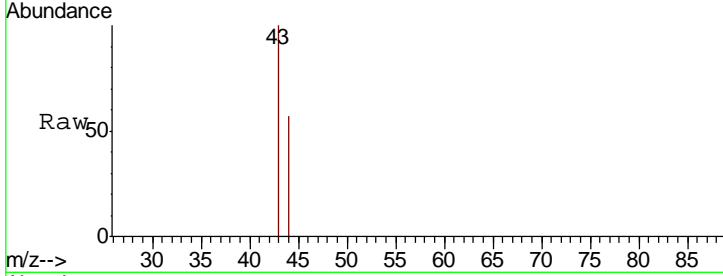




#18  
 Methyl Acetate  
 Concen: 0.540 ug/l  
 RT: 4.31 min Scan# 789  
 Delta R.T. 0.02 min  
 Lab File: VN060024.D  
 Acq: 7 Feb 2020 12:21

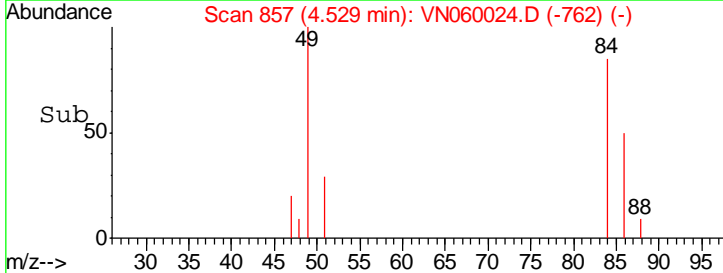
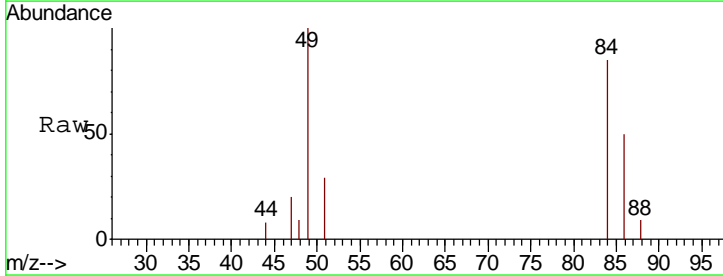
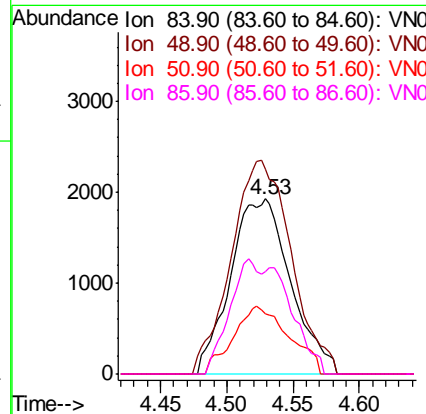
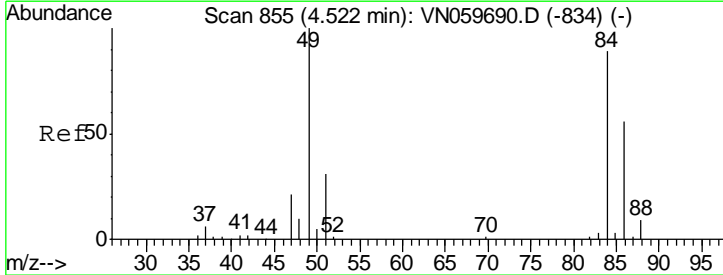
Instrument :  
 MSVOA\_N  
 ClientSampled :

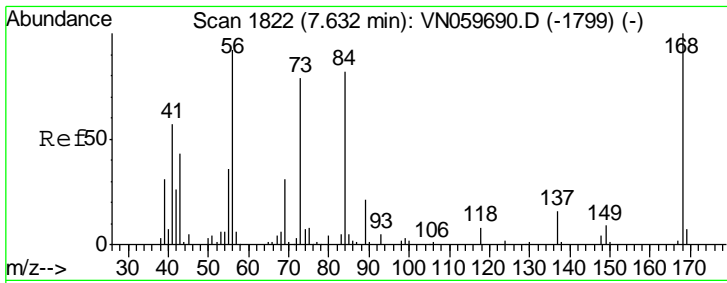
Tgt Ion	Resp	Lower	Upper
43	1364	100	
74	0.0	17.5	26.3#



#20  
 Methylene Chloride  
 Concen: 1.862 ug/l  
 RT: 4.53 min Scan# 857  
 Delta R.T. 0.01 min  
 Lab File: VN060024.D  
 Acq: 7 Feb 2020 12:21

Tgt Ion	Resp	Lower	Upper
84	6080	100	
49	117.2	106.6	160.0
51	34.1	31.9	47.9
86	58.4	50.8	76.2

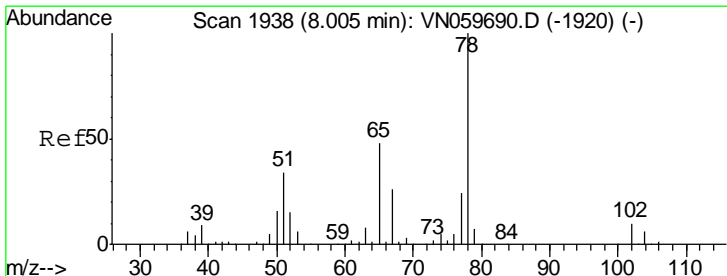
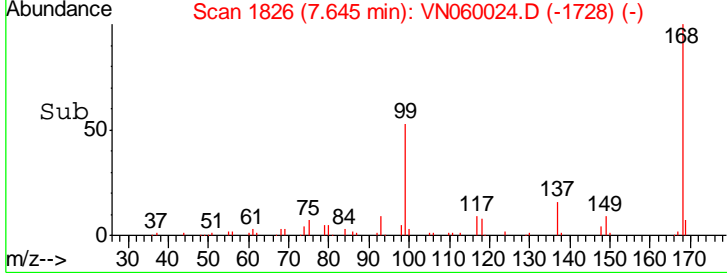
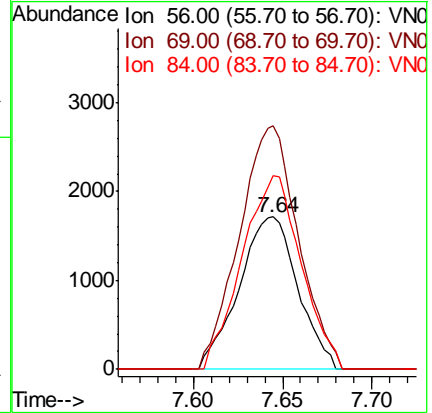
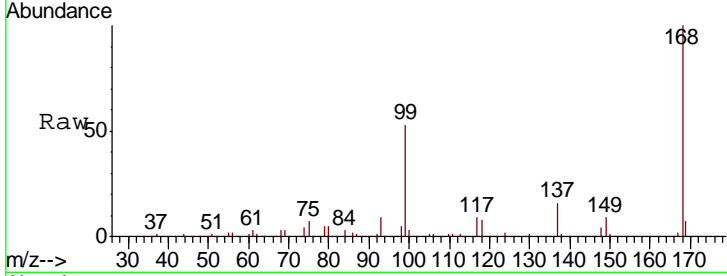




#31  
 Cyclohexane  
 Concen: 1.232 ug/l  
 RT: 7.64 min Scan# 1826  
 Delta R.T. 0.01 min  
 Lab File: VN060024.D  
 Acq: 7 Feb 2020 12:21

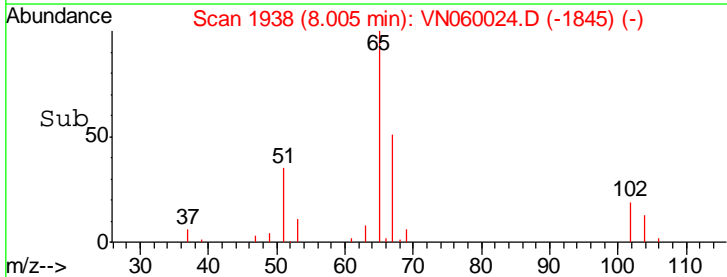
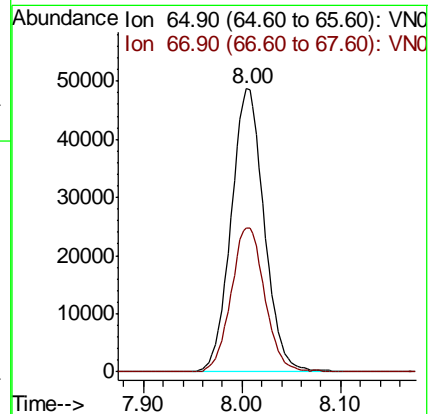
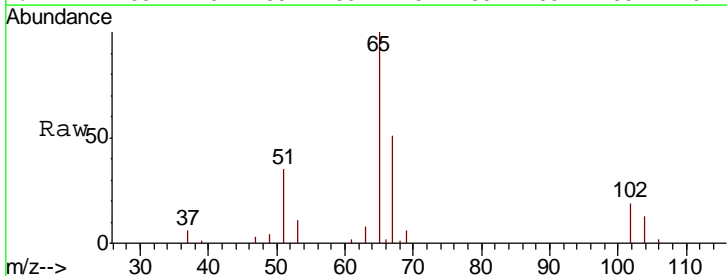
Instrument :  
 MSVOA\_N  
 ClientSampled :

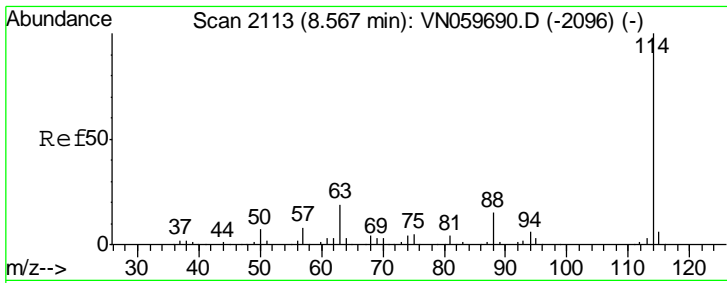
Tgt Ion	Resp	Lower	Upper
56	100		
69	159.6	26.5	39.7#
84	127.2	65.3	97.9#



#33  
 1,2-Dichloroethane-d4  
 Concen: 52.670 ug/l  
 RT: 8.00 min Scan# 1938  
 Delta R.T. 0.00 min  
 Lab File: VN060024.D  
 Acq: 7 Feb 2020 12:21

Tgt Ion	Resp	Lower	Upper
65	100		
67	51.6	0.0	103.0

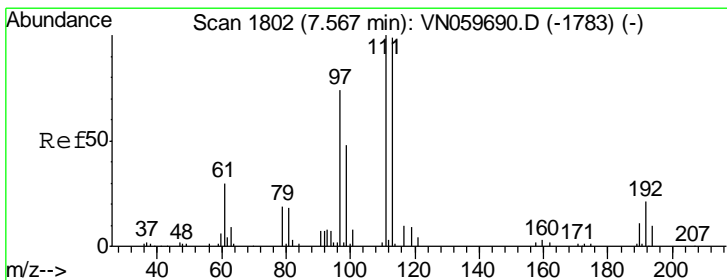
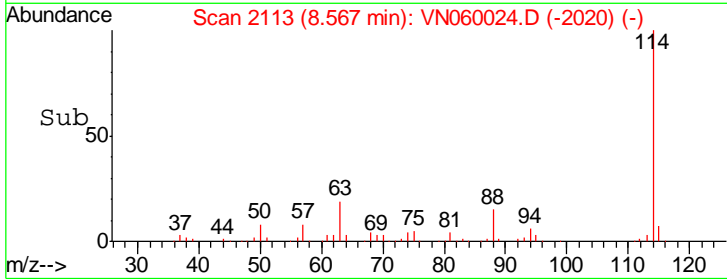
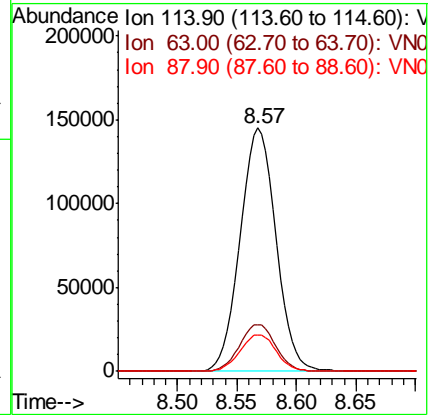
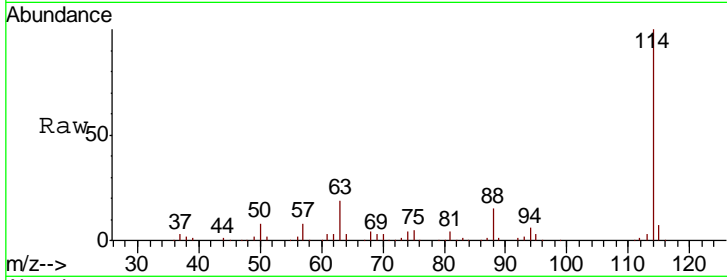




#34  
 1,4-Difluorobenzene  
 Concen: 50.000 ug/l  
 RT: 8.57 min Scan# 2113  
 Delta R.T. 0.00 min  
 Lab File: VN060024.D  
 Acq: 7 Feb 2020 12:21

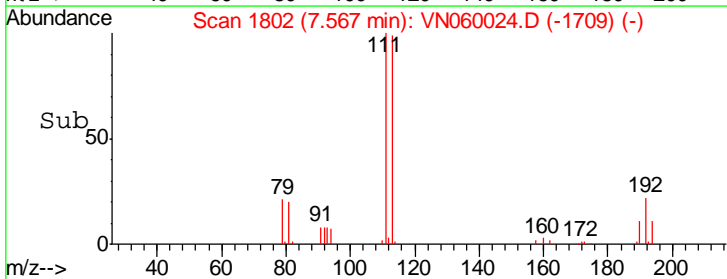
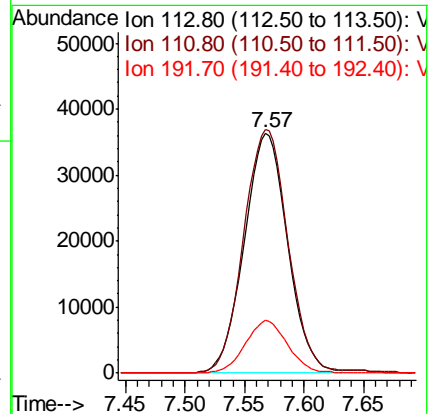
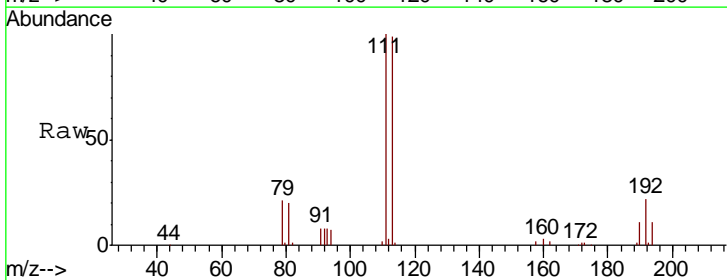
Instrument :  
 MSVOA\_N  
 ClientSampled :

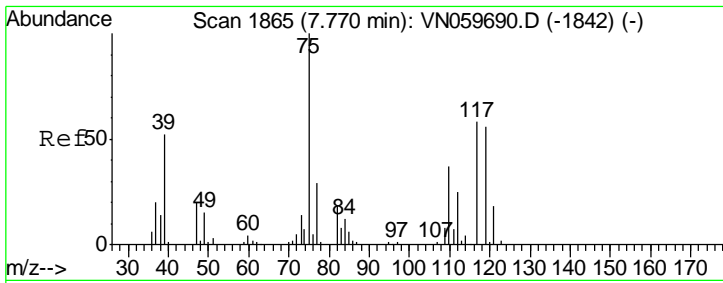
Tgt Ion	Resp	Lower	Upper
114	302781		
63	19.3	0.0	43.6
88	15.0	0.0	31.4



#35  
 Dibromofluoromethane  
 Concen: 50.851 ug/l  
 RT: 7.57 min Scan# 1802  
 Delta R.T. 0.00 min  
 Lab File: VN060024.D  
 Acq: 7 Feb 2020 12:21

Tgt Ion	Resp	Lower	Upper
113	91818		
111	104.6	83.5	125.3
192	21.3	15.4	23.2

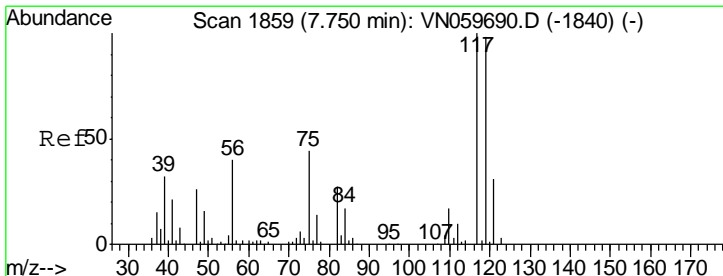
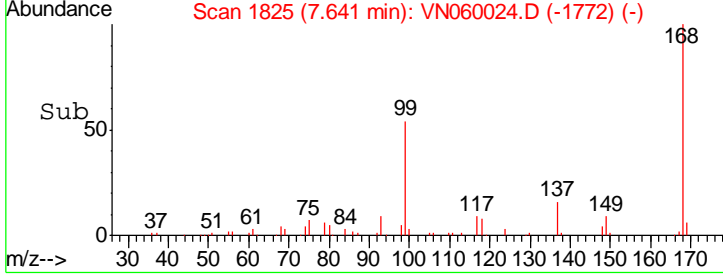
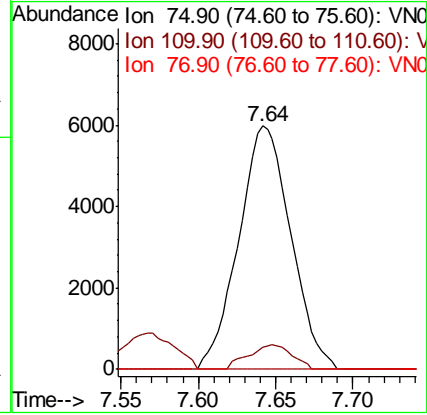
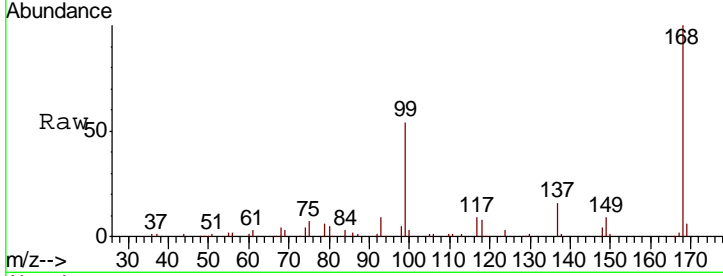




#36  
 1,1-Dichloropropene  
 Concen: 5.310 ug/l  
 RT: 7.64 min Scan# 1825  
 Delta R.T. -0.13 min  
 Lab File: VN060024.D  
 Acq: 7 Feb 2020 12:21

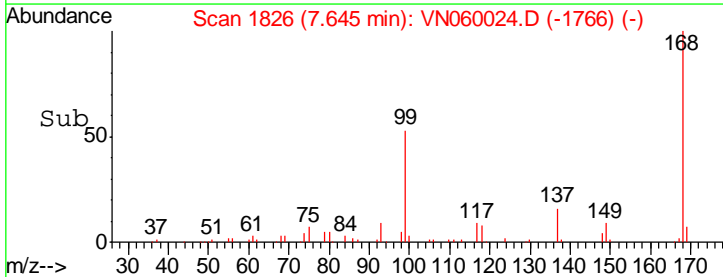
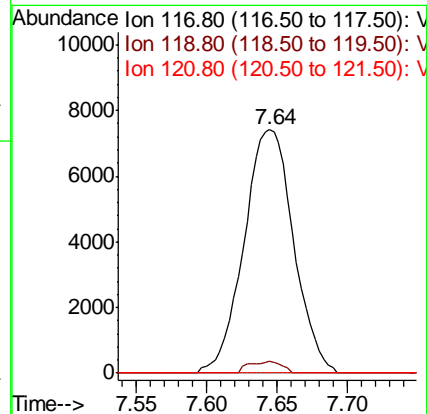
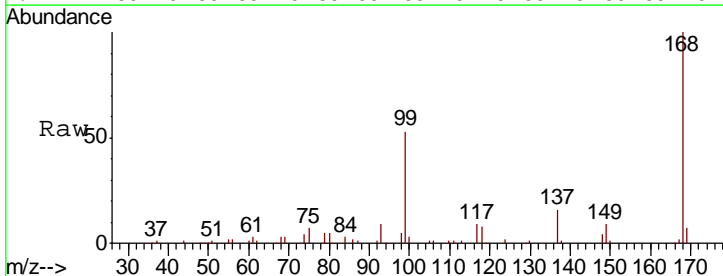
Instrument :  
 MSVOA\_N  
 ClientSampled :

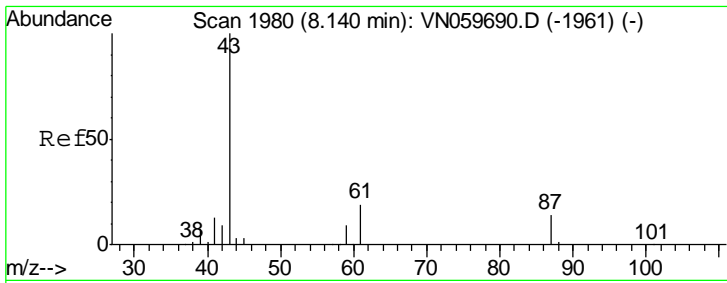
Tgt Ion	Resp	Lower	Upper
75	14002		
110	8.3	16.6	49.7#
77	0.0	25.1	37.7#



#38  
 Carbon Tetrachloride  
 Concen: 6.359 ug/l  
 RT: 7.64 min Scan# 1826  
 Delta R.T. -0.11 min  
 Lab File: VN060024.D  
 Acq: 7 Feb 2020 12:21

Tgt Ion	Resp	Lower	Upper
117	18238		
119	4.8	76.5	114.7#
121	0.0	25.1	37.7#

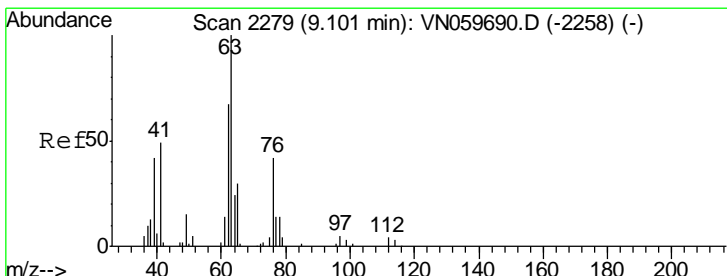
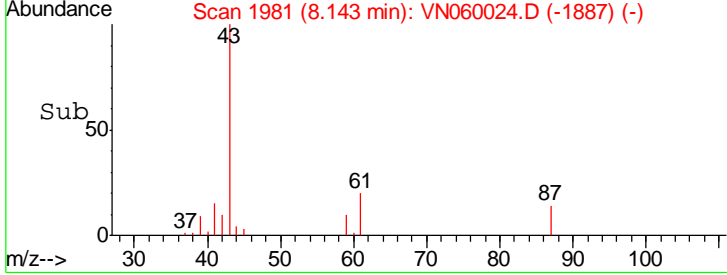
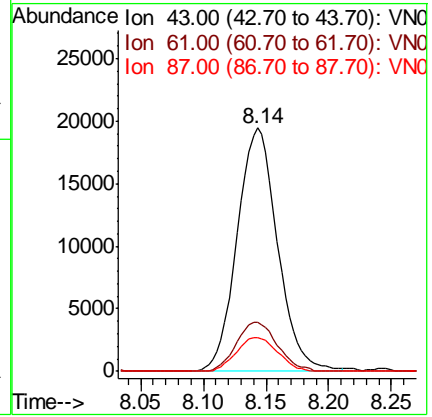
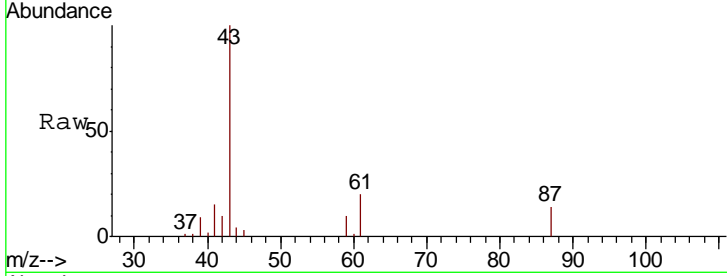




#43  
 Isopropyl Acetate  
 Concen: 10.243 ug/l  
 RT: 8.14 min Scan# 1981  
 Delta R.T. 0.00 min  
 Lab File: VN060024.D  
 Acq: 7 Feb 2020 12:21

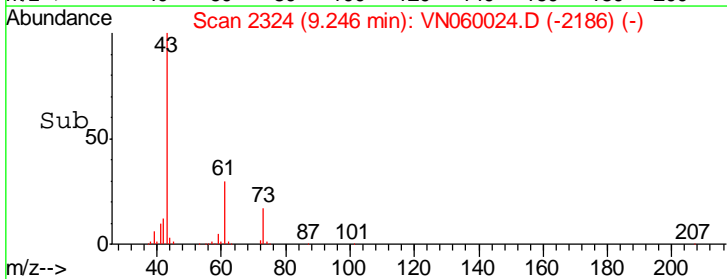
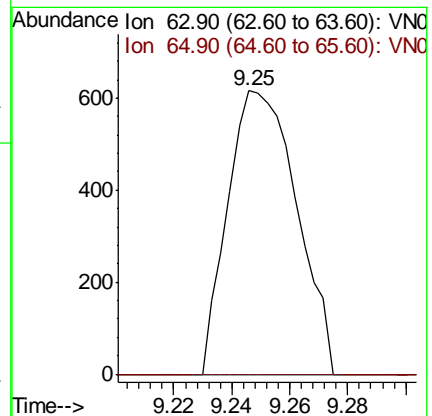
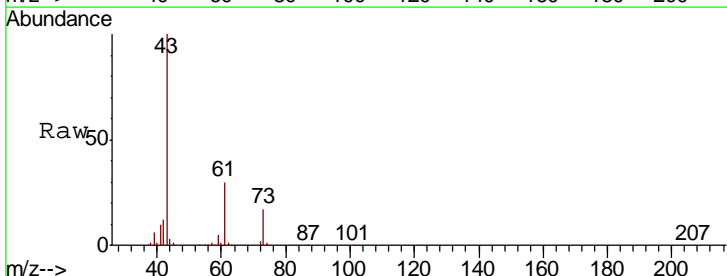
Instrument :  
 MSVOA\_N  
 ClientSampled :

Tgt Ion	Resp	Lower	Upper
43	100		
61	20.4	20.2	30.2
87	14.2	9.5	14.3

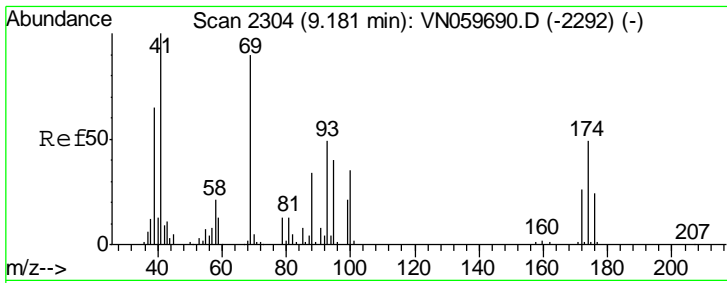


#45  
 1,2-Dichloropropane  
 Concen: 0.522 ug/l  
 RT: 9.25 min Scan# 2324  
 Delta R.T. 0.14 min  
 Lab File: VN060024.D  
 Acq: 7 Feb 2020 12:21

Tgt Ion	Resp	Lower	Upper
63	100		
65	0.0	24.9	37.3#



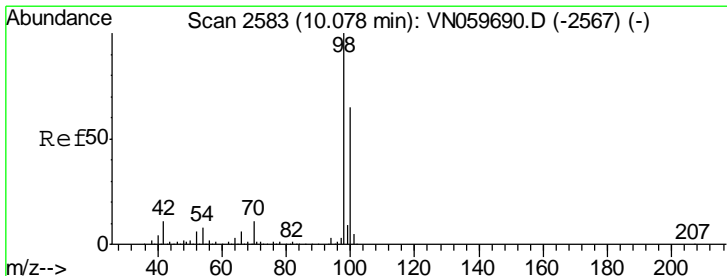
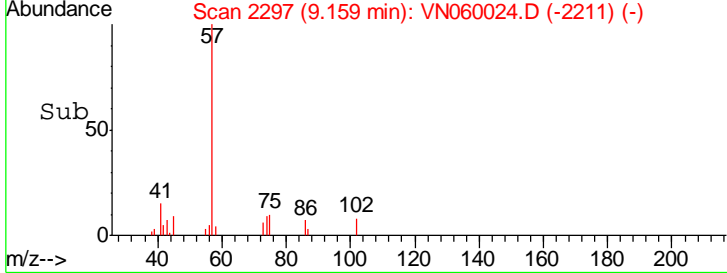
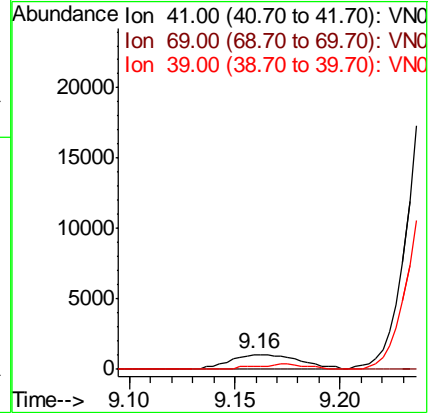
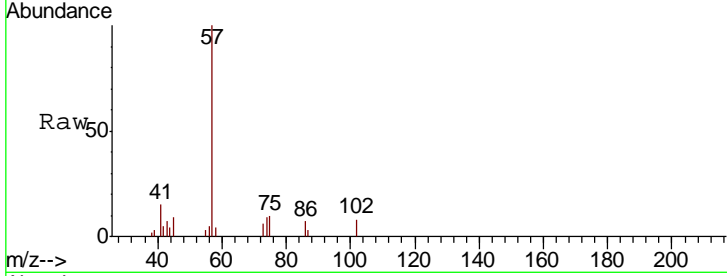




#48  
 Methyl methacrylate  
 Concen: 1.267 ug/l  
 RT: 9.16 min Scan# 2297  
 Delta R.T. -0.02 min  
 Lab File: VN060024.D  
 Acq: 7 Feb 2020 12:21

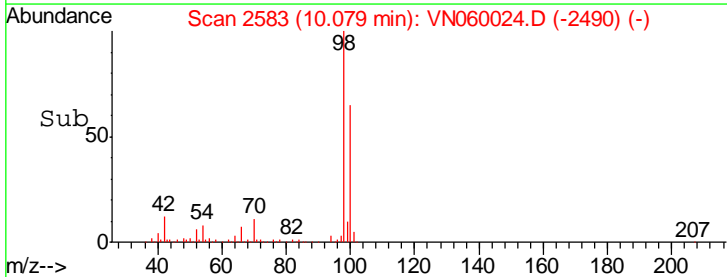
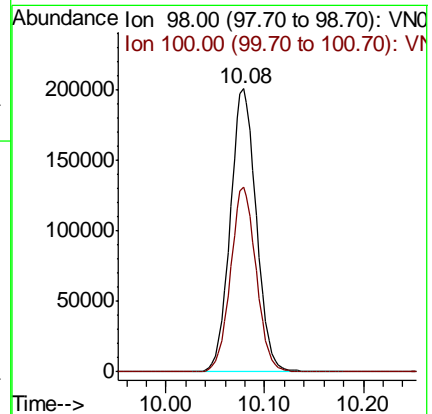
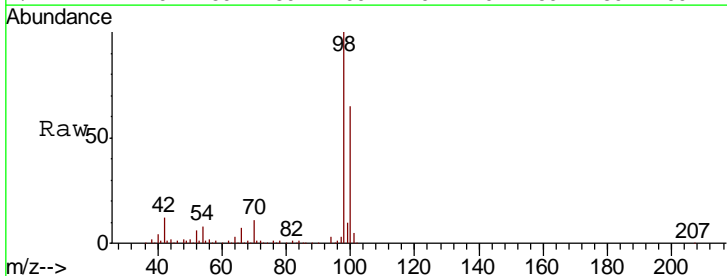
Instrument :  
 MSVOA\_N  
 ClientSampled :

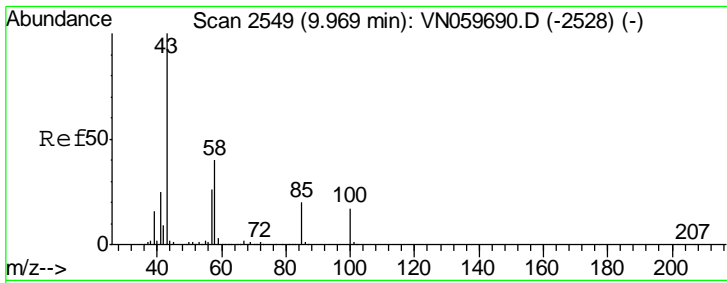
Tgt Ion	Resp	Lower	Upper
41	100		
69	0.0	64.4	96.6#
39	0.0	51.3	76.9#



#50  
 Toluene-d8  
 Concen: 52.808 ug/l  
 RT: 10.08 min Scan# 2583  
 Delta R.T. 0.00 min  
 Lab File: VN060024.D  
 Acq: 7 Feb 2020 12:21

Tgt Ion	Resp	Lower	Upper
98	100		
100	64.4	51.2	76.8

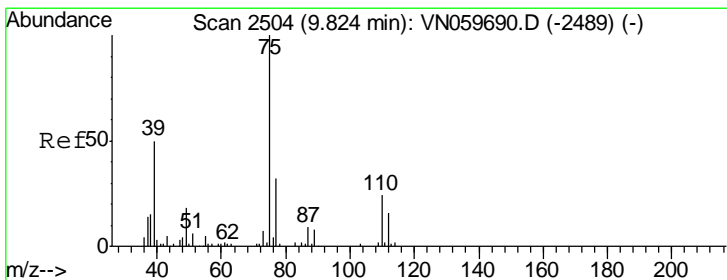
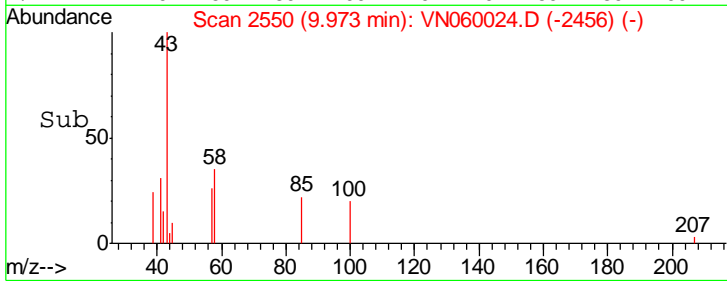
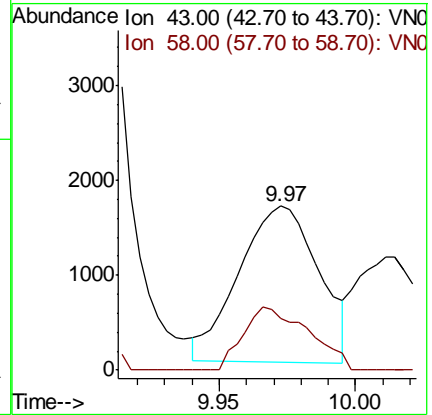
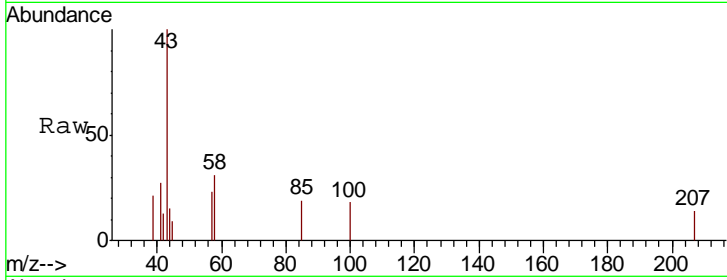




#51  
 4-Methyl-2-Pentanone  
 Concen: 1.360 ug/l  
 RT: 9.97 min Scan# 2550  
 Delta R.T. 0.00 min  
 Lab File: VN060024.D  
 Acq: 7 Feb 2020 12:21

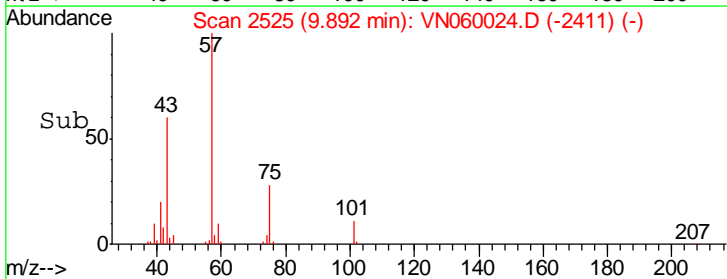
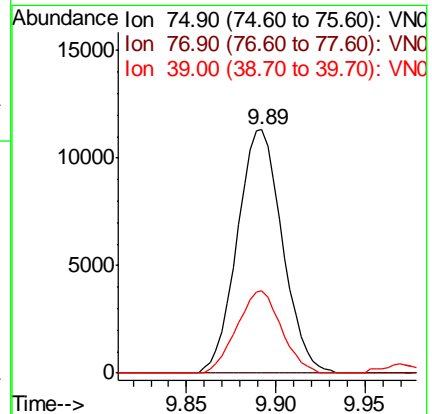
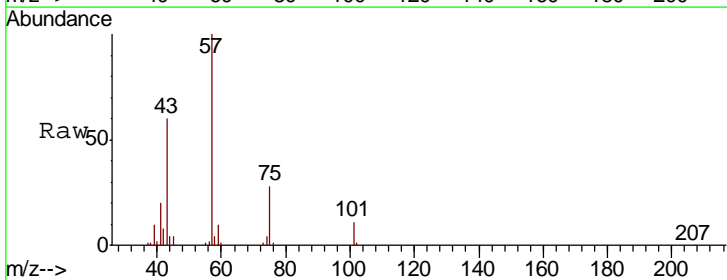
Instrument :  
 MSVOA\_N  
 ClientSampled :

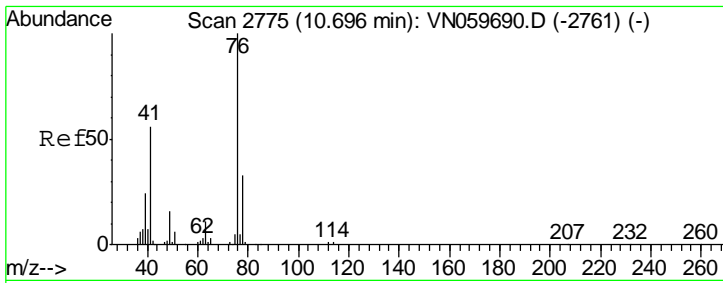
Tgt Ion	Resp	Lower	Upper
43	100		
58	33.3	29.8	44.8



#54  
 cis-1,3-Dichloropropene  
 Concen: 6.123 ug/l  
 RT: 9.89 min Scan# 2525  
 Delta R.T. 0.07 min  
 Lab File: VN060024.D  
 Acq: 7 Feb 2020 12:21

Tgt Ion	Resp	Lower	Upper
75	100		
77	0.0	25.1	37.7#
39	33.8	46.1	69.1#

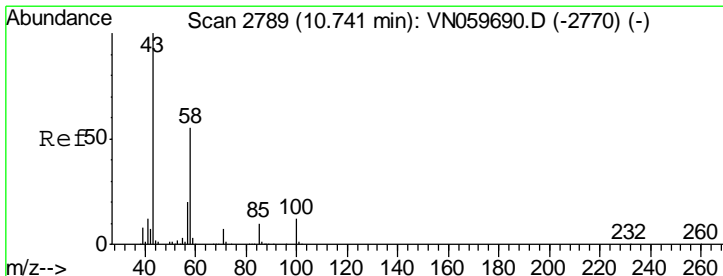
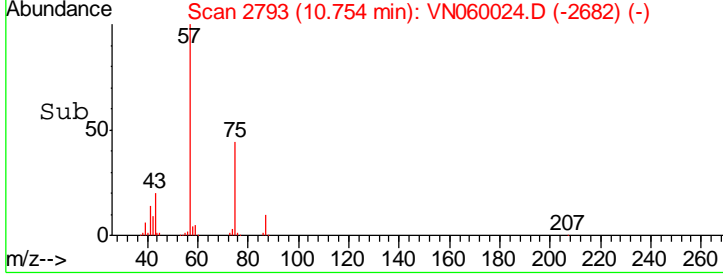
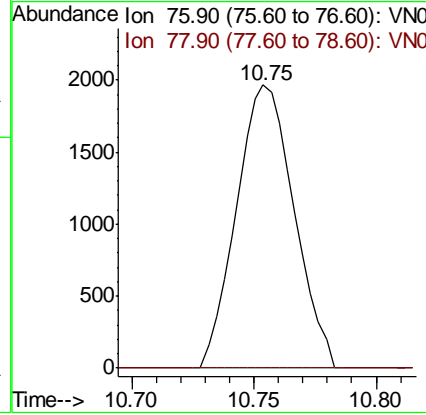
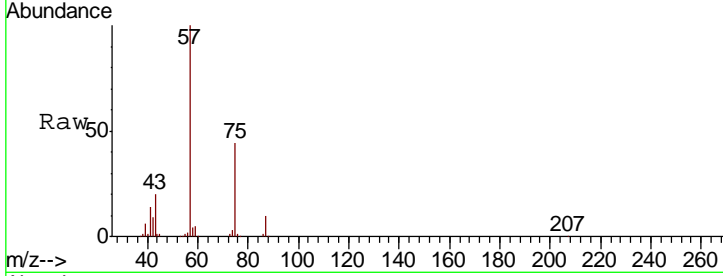




#57  
 1,3-Dichloropropane  
 Concen: 1.029 ug/l  
 RT: 10.75 min Scan# 2793  
 Delta R.T. 0.06 min  
 Lab File: VN060024.D  
 Acq: 7 Feb 2020 12:21

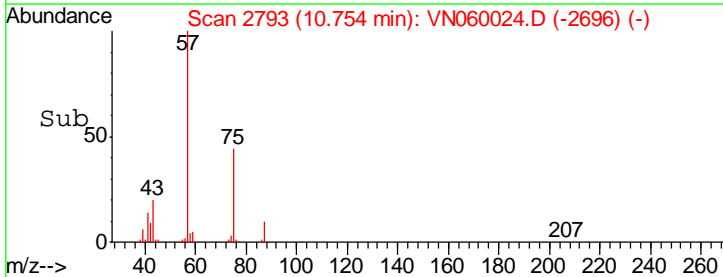
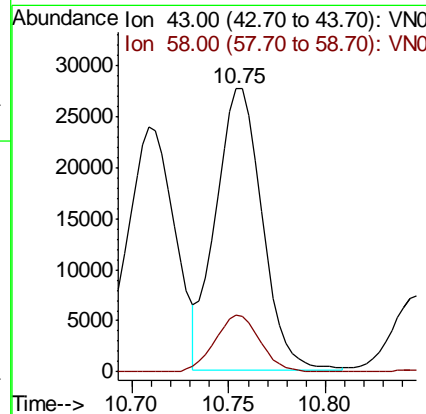
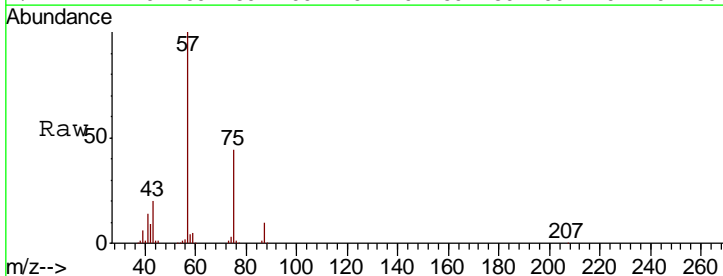
Instrument : MSVOA\_N  
 ClientSampled :

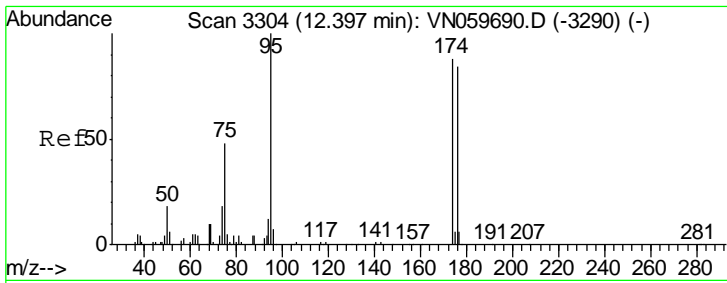
Tgt Ion	Resp	Lower	Upper
76	3214		
78	0.0	25.8	38.8#



#59  
 2-Hexanone  
 Concen: 25.292 ug/l  
 RT: 10.75 min Scan# 2793  
 Delta R.T. 0.01 min  
 Lab File: VN060024.D  
 Acq: 7 Feb 2020 12:21

Tgt Ion	Resp	Lower	Upper
43	45816		
58	19.6	25.8	77.3#

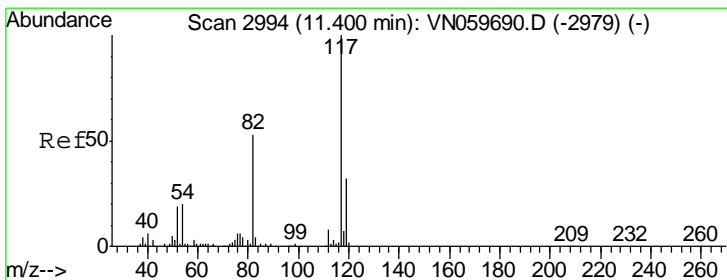
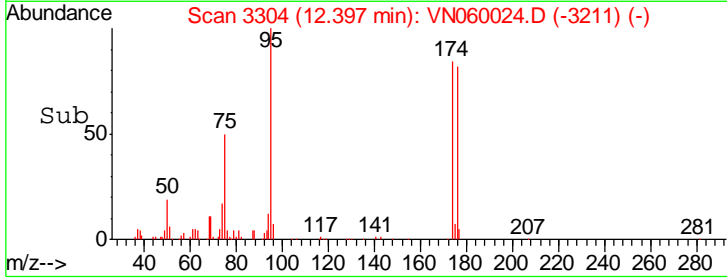
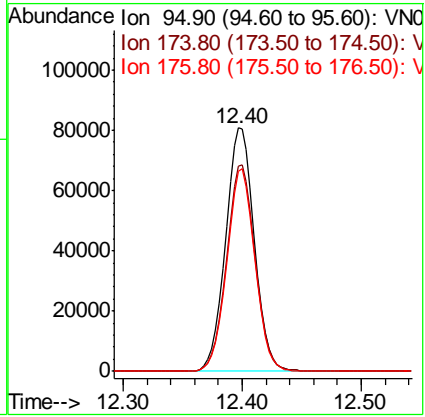
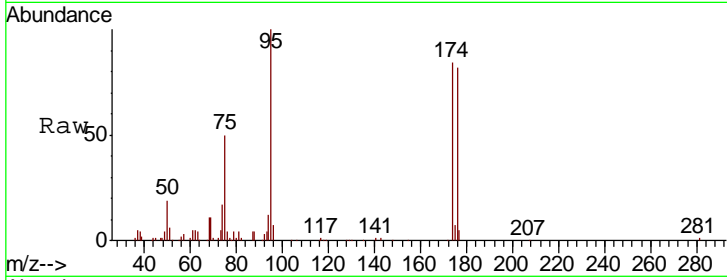




#62  
 4-Bromofluorobenzene  
 Concen: 53.312 ug/l  
 RT: 12.40 min Scan# 3304  
 Delta R.T. 0.00 min  
 Lab File: VN060024.D  
 Acq: 7 Feb 2020 12:21

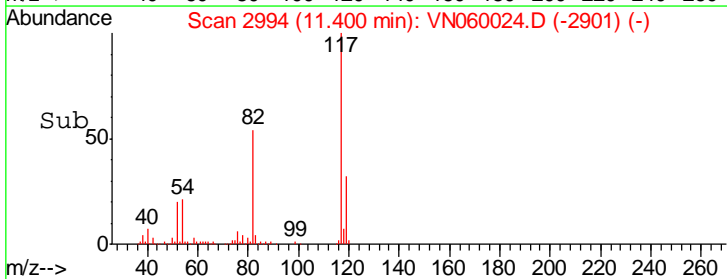
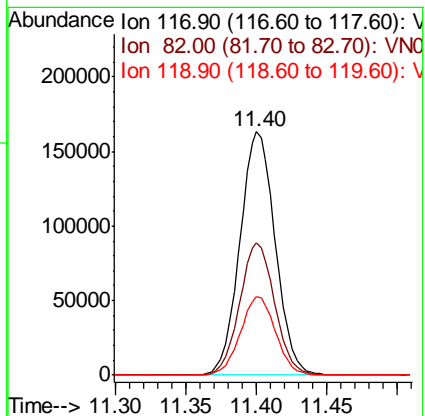
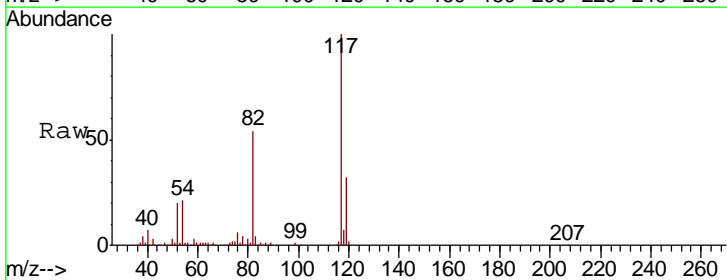
Instrument :  
 MSVOA\_N  
 ClientSampled :

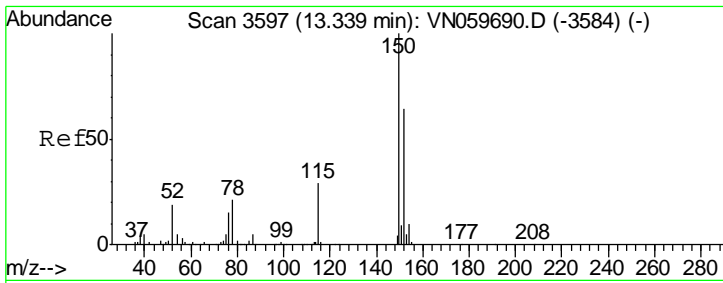
Tgt Ion	Resp	Lower	Upper
95	134454		
174	84.7	0.0	151.4
176	81.6	0.0	146.0



#63  
 Chlorobenzene-d5  
 Concen: 50.000 ug/l  
 RT: 11.40 min Scan# 2994  
 Delta R.T. 0.00 min  
 Lab File: VN060024.D  
 Acq: 7 Feb 2020 12:21

Tgt Ion	Resp	Lower	Upper
117	286296		
82	54.3	45.9	68.9
119	32.1	25.5	38.3

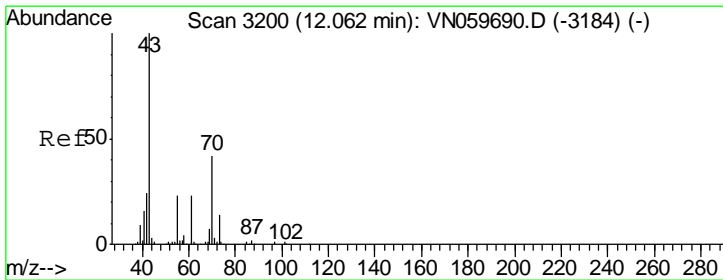
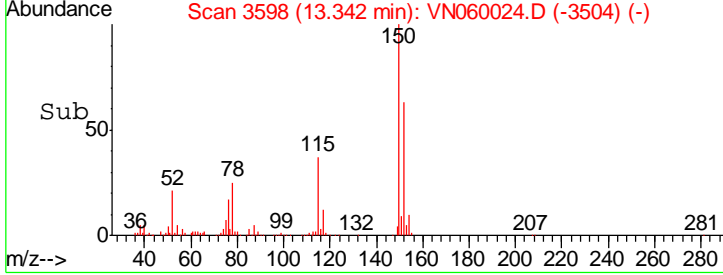
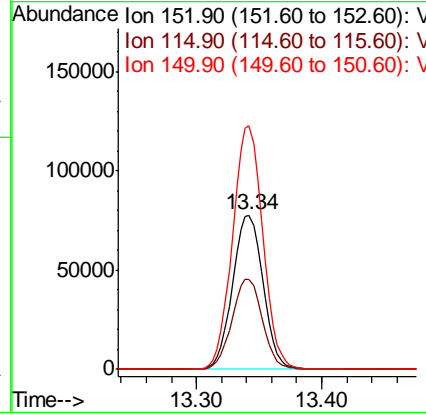
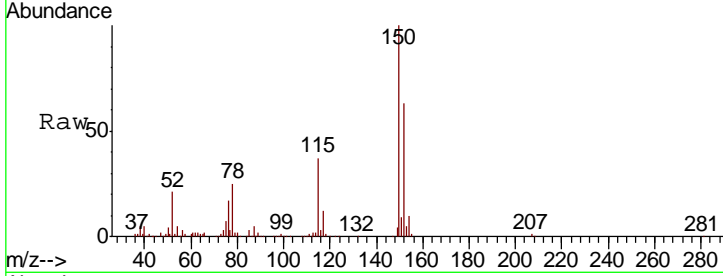




#72  
 1,4-Dichlorobenzene-d4  
 Concen: 50.000 ug/l  
 RT: 13.34 min Scan# 3598  
 Delta R.T. 0.00 min  
 Lab File: VN060024.D  
 Acq: 7 Feb 2020 12:21

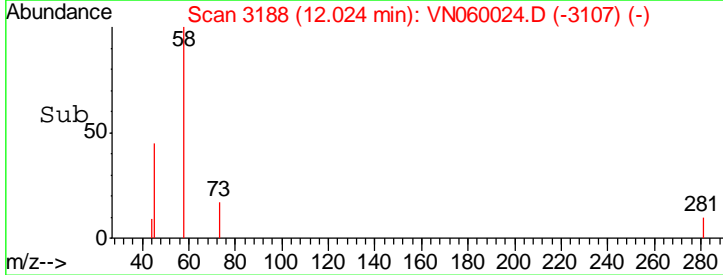
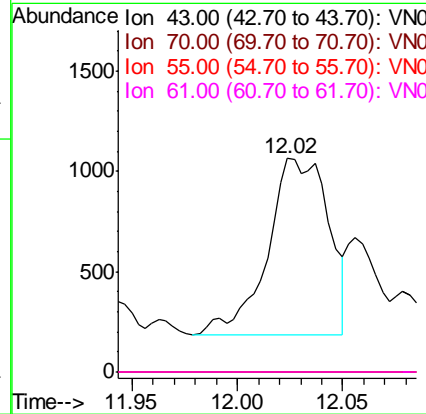
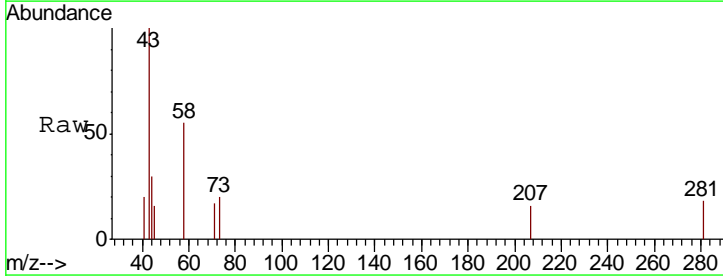
Instrument : MSVOA\_N  
 ClientSampled :

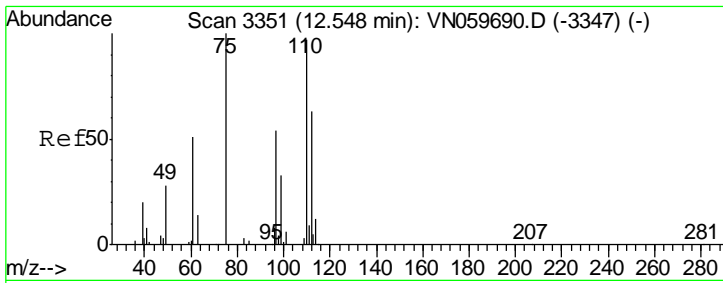
Tgt Ion	Resp	Lower	Upper
152	100		
115	58.1	30.3	90.9
150	156.6	0.0	345.2



#74  
 N-amyl acetate  
 Concen: 0.478 ug/l  
 RT: 12.02 min Scan# 3188  
 Delta R.T. -0.04 min  
 Lab File: VN060024.D  
 Acq: 7 Feb 2020 12:21

Tgt Ion	Resp	Lower	Upper
43	100		
70	0.0	31.3	46.9#
55	0.0	19.8	29.6#
61	0.0	18.3	27.5#

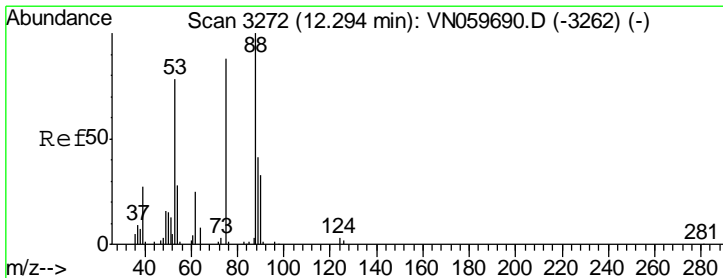
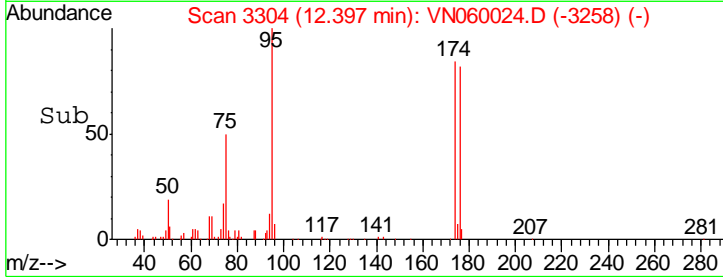
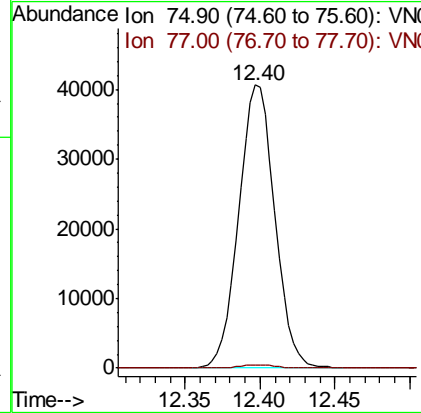
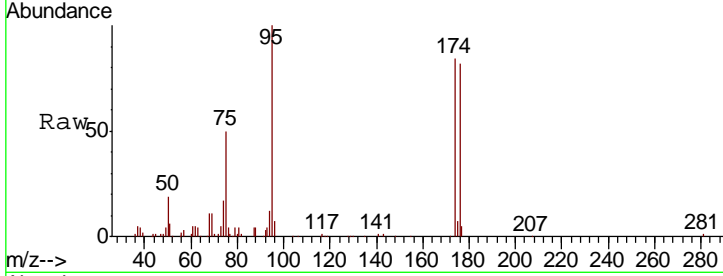




#76  
 1,2,3-Trichloropropane  
 Concen: 30.813 ug/l  
 RT: 12.40 min Scan# 3304  
 Delta R.T. -0.15 min  
 Lab File: VN060024.D  
 Acq: 7 Feb 2020 12:21

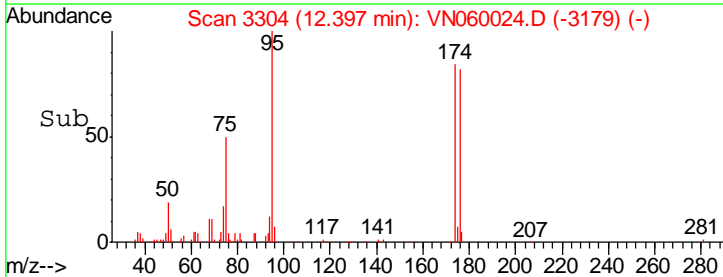
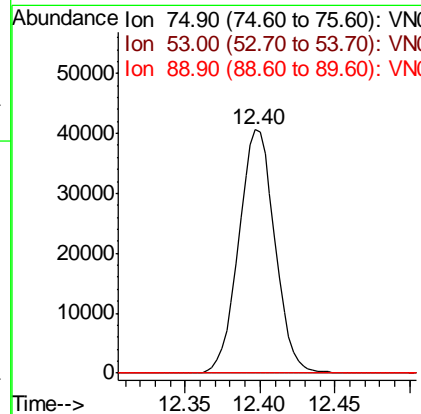
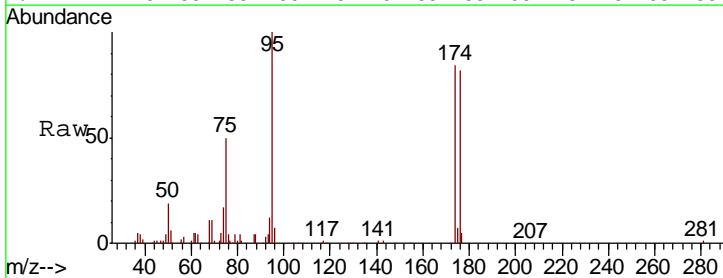
Instrument :  
 MSVOA\_N  
 ClientSampled :

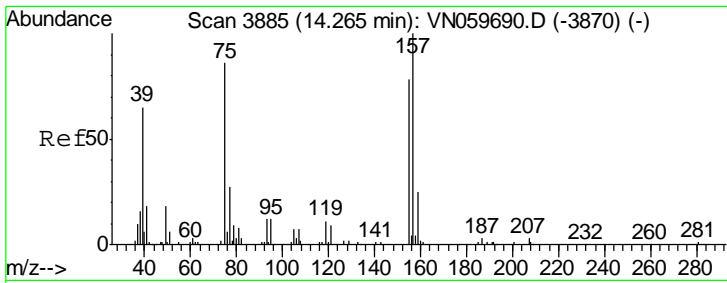
Tgt Ion	Resp	Lower	Upper
75	100		
77	1.0	0.0	0.0#



#81  
 trans-1,4-Dichloro-2-butene  
 Concen: 66.172 ug/l  
 RT: 12.40 min Scan# 3304  
 Delta R.T. 0.10 min  
 Lab File: VN060024.D  
 Acq: 7 Feb 2020 12:21

Tgt Ion	Resp	Lower	Upper
75	100		
53	0.0	78.1	117.1#
89	0.0	35.4	53.2#

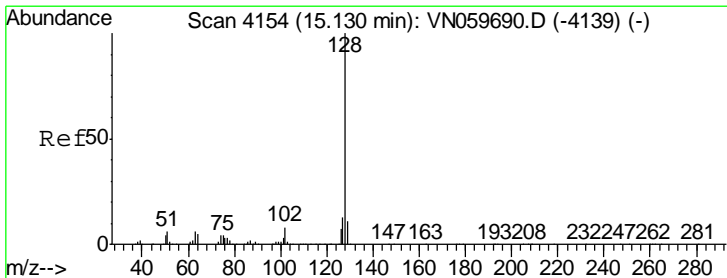
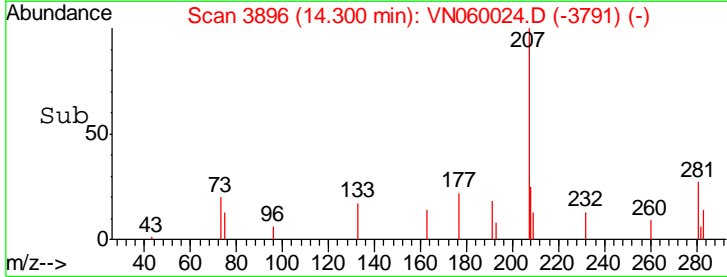
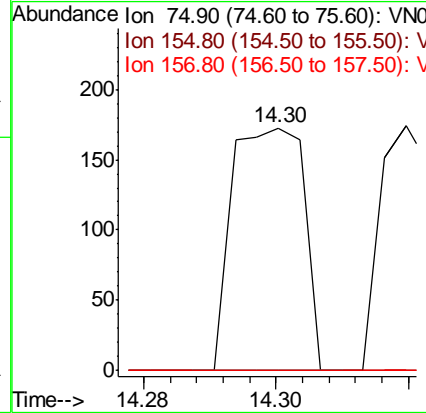
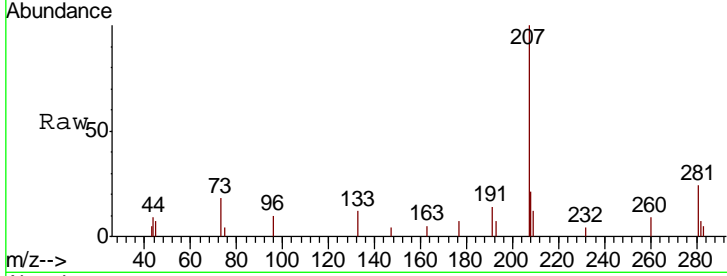




#92  
 1,2-Dibromo-3-Chloropropane  
 Concen: Below Cal  
 RT: 14.30 min Scan# 3896  
 Delta R.T. 0.04 min  
 Lab File: VN060024.D  
 Acq: 7 Feb 2020 12:21

Instrument :  
 MSVOA\_N  
 ClientSampled :

Tgt Ion	Resp	Lower	Upper
75	100		
155	0.0	37.0	110.9#
157	0.0	48.4	145.2#



#95  
 Naphthalene  
 Concen: 1.439 ug/l  
 RT: 15.13 min Scan# 4155  
 Delta R.T. 0.00 min  
 Lab File: VN060024.D  
 Acq: 7 Feb 2020 12:21

Tgt Ion	Resp	Lower	Upper
128	100		
127	13.4	10.4	15.6
129	11.0	8.6	12.8

