

Data Path : Z:\voasrv\HPCHEM1\MSVOA_N\Data\VN020924\
 Data File : VN080994.D
 Acq On : 09 Feb 2024 17:10
 Operator : JC\MD
 Sample : P1327-01
 Misc : 5.0mL/MSVOA_N/WATER
 ALS Vial : 18 Sample Multiplier: 1

Instrument :
 MSVOA_N
ClientSampleId :
 MANHOLE

Quant Time: Feb 10 02:04:56 2024
 Quant Method : Z:\voasrv\HPCHEM1\MSVOA_N\methods\624N020924W.M
 Quant Title : METHOD 624 VOLATILE ORGANIC ANALYSIS
 QLast Update : Sat Feb 10 01:52:21 2024
 Response via : Initial Calibration

Manual Integrations
APPROVED
 Reviewed By :John Carlone 02/12/2024
 Supervised By :Mahesh Dadoda 02/12/2024

Compound	R.T.	QIon	Response	Conc	Units	Dev(Min)

Internal Standards						
1) Bromochloromethane	7.818	128	72159	30.000	ug/l	0.00
28) 1,4-Difluorobenzene	9.106	114	400840	30.000	ug/l	0.00
57) Chlorobenzene-d5	11.871	117	362708	30.000	ug/l	0.00
System Monitoring Compounds						
27) 1,2-Dichloroethane-d4	8.583	65	166272	30.666	ug/l	0.00
Spiked Amount	30.000	Range 91 - 110	Recovery	=	102.233%	
60) 4-Bromofluorobenzene	12.853	95	150900	27.214	ug/l	0.00
Spiked Amount	30.000	Range 63 - 112	Recovery	=	90.700%	
63) Toluene-d8	10.571	98	484108	29.742	ug/l	0.00
Spiked Amount	30.000	Range 91 - 112	Recovery	=	99.133%	
Target Compounds						
						Qvalue
15) Acetone	4.436	58	13121m	30.781	ug/l	
25) Chloroform	7.971	83	32278	3.652	ug/l	96
30) 2-Butanone	7.489	43	7311	3.337	ug/l #	75

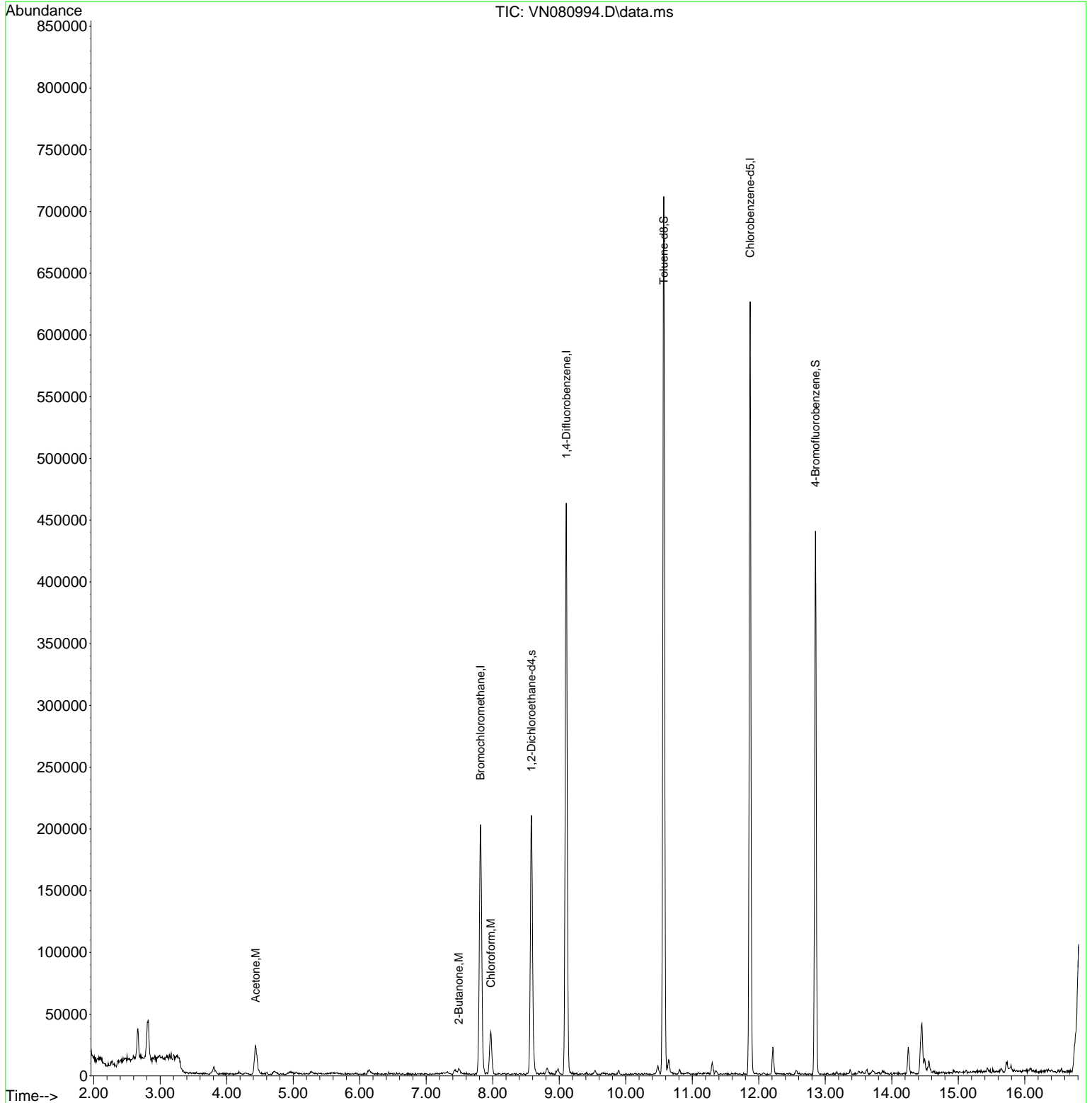
(#) = qualifier out of range (m) = manual integration (+) = signals summed

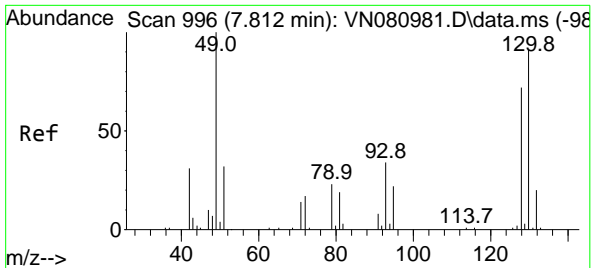
Data Path : Z:\voasrv\HPCHEM1\MSVOA_N\Data\VN020924\
 Data File : VN080994.D
 Acq On : 09 Feb 2024 17:10
 Operator : JC\MD
 Sample : P1327-01
 Misc : 5.0mL/MSVOA_N/WATER
 ALS Vial : 18 Sample Multiplier: 1

Instrument :
 MSVOA_N
ClientSampleId :
 MANHOLE

Quant Time: Feb 10 02:04:56 2024
 Quant Method : Z:\voasrv\HPCHEM1\MSVOA_N\methods\624N020924W.M
 Quant Title : METHOD 624 VOLATILE ORGANIC ANALYSIS
 QLast Update : Sat Feb 10 01:52:21 2024
 Response via : Initial Calibration

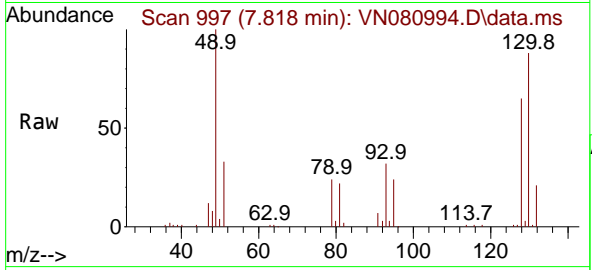
Manual Integrations
APPROVED
 Reviewed By :John Carlone 02/12/2024
 Supervised By :Mahesh Dadoda 02/12/2024





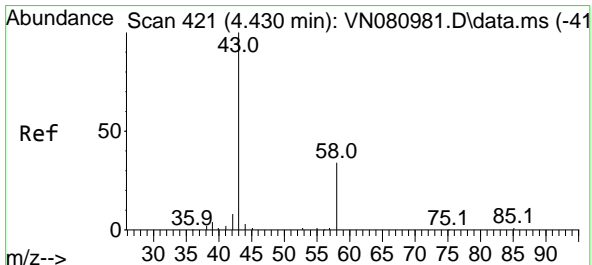
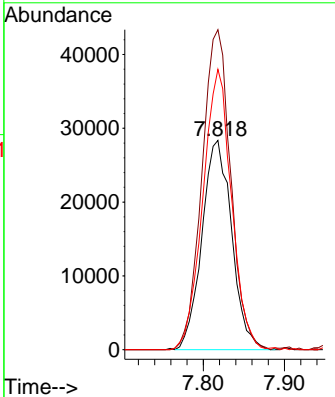
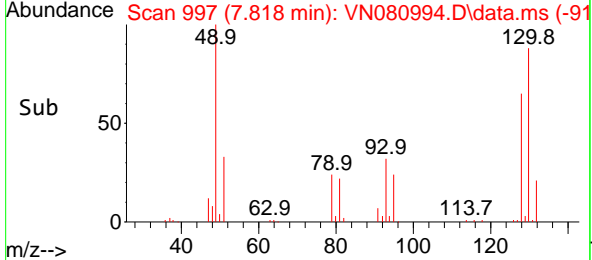
#1
 Bromochloromethane
 Concen: 30.000 ug/l
 RT: 7.818 min Scan# 997
 Delta R.T. 0.006 min
 Lab File: VN080994.D
 Acq: 09 Feb 2024 17:10

Instrument : MSVOA_N
 Client Sample Id : MANHOLE

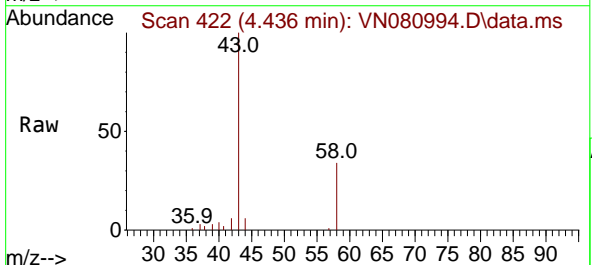


Tgt Ion: 128 Resp: 72159
 Ion Ratio Lower Upper
 128 100
 49 148.1 0.0 403.7
 130 129.1 0.0 323.3

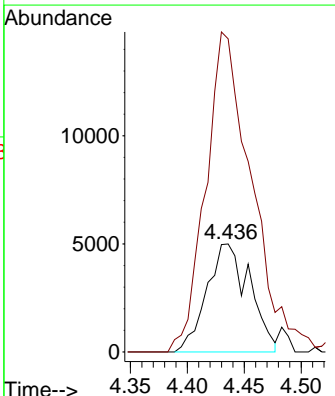
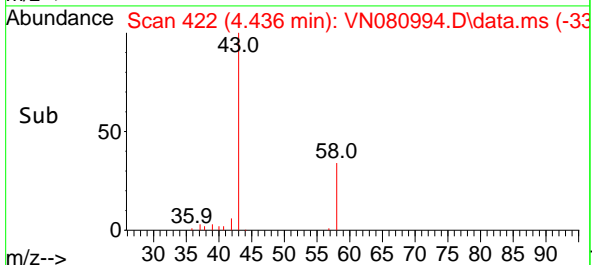
Manual Integrations
APPROVED
 Reviewed By : John Carlone 02/12/2024
 Supervised By : Mahesh Dadoda 02/12/2024

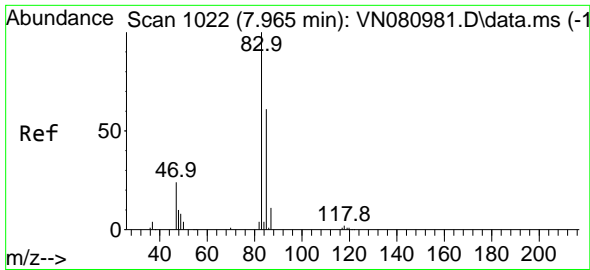


#15
 Acetone
 Concen: 30.781 ug/l m
 RT: 4.436 min Scan# 422
 Delta R.T. 0.006 min
 Lab File: VN080994.D
 Acq: 09 Feb 2024 17:10



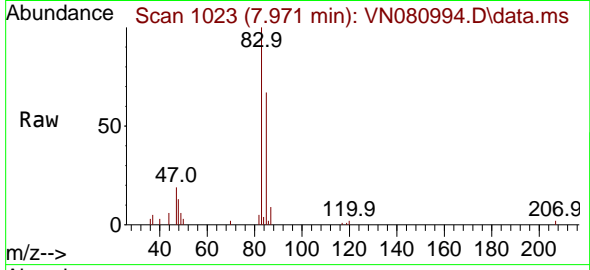
Tgt Ion: 58 Resp: 13121
 Ion Ratio Lower Upper
 58 100
 43 289.9 223.1 334.7





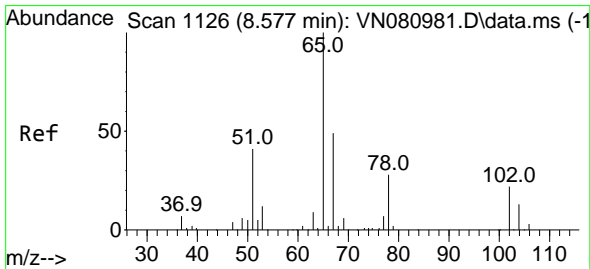
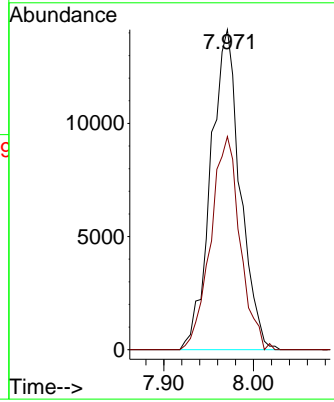
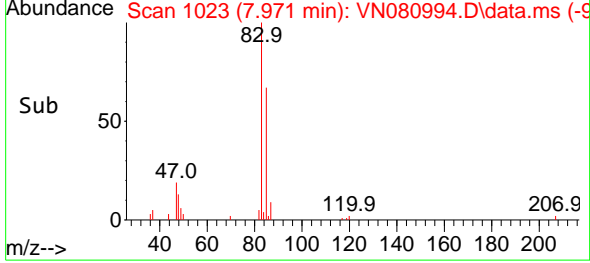
#25
 Chloroform
 Concen: 3.652 ug/l
 RT: 7.971 min Scan# 1023
 Delta R.T. 0.006 min
 Lab File: VN080994.D
 Acq: 09 Feb 2024 17:10

Instrument :
 MSVOA_N
ClientSampleId :
 MANHOLE

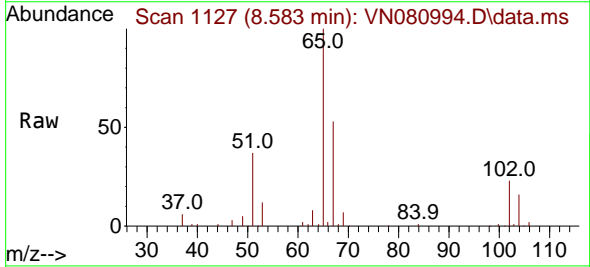


Tgt Ion: 83 Resp: 32278
 Ion Ratio Lower Upper
 83 100
 85 66.6 50.9 76.3

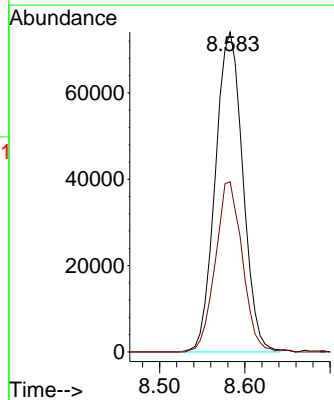
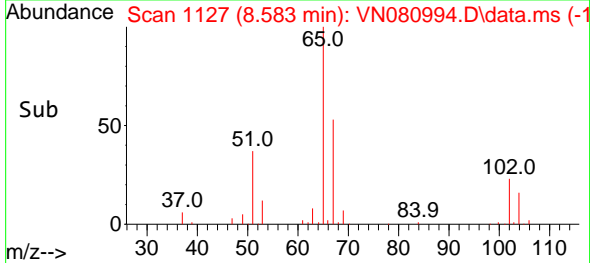
Manual Integrations
APPROVED
 Reviewed By :John Carlone 02/12/2024
 Supervised By :Mahesh Dadoda 02/12/2024

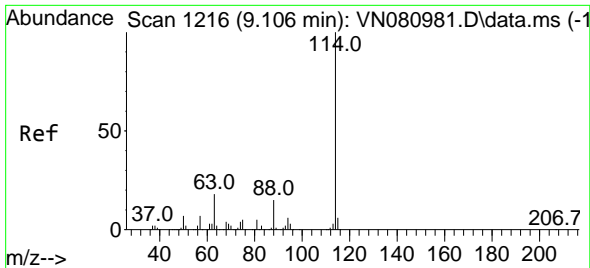


#27
 1,2-Dichloroethane-d4
 Concen: 30.666 ug/l
 RT: 8.583 min Scan# 1127
 Delta R.T. 0.006 min
 Lab File: VN080994.D
 Acq: 09 Feb 2024 17:10



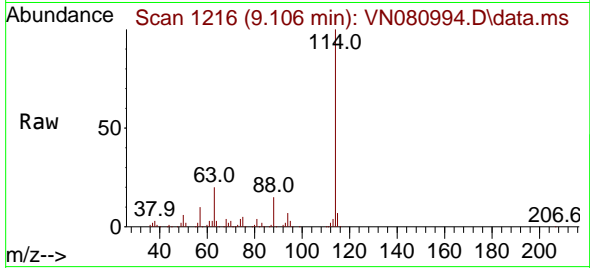
Tgt Ion: 65 Resp: 166272
 Ion Ratio Lower Upper
 65 100
 67 52.1 43.2 64.8





#28
 1,4-Difluorobenzene
 Concen: 30.000 ug/l
 RT: 9.106 min Scan# 111
 Delta R.T. 0.000 min
 Lab File: VN080994.D
 Acq: 09 Feb 2024 17:10

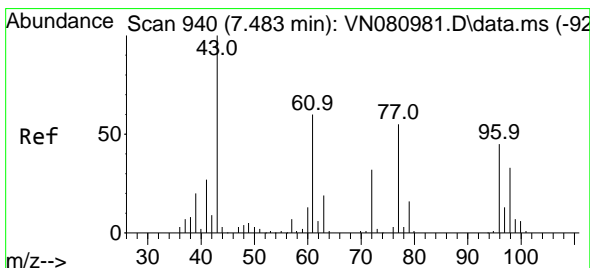
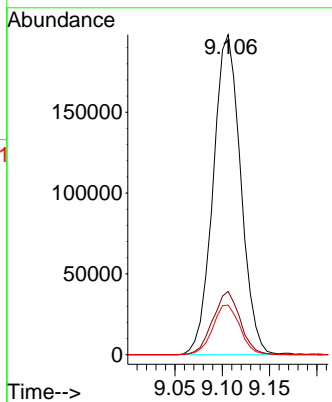
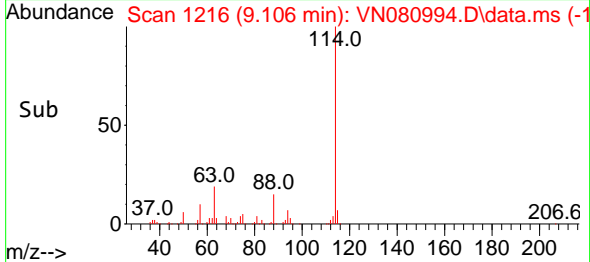
Instrument : MSVOA_N
 ClientSampleId : MANHOLE



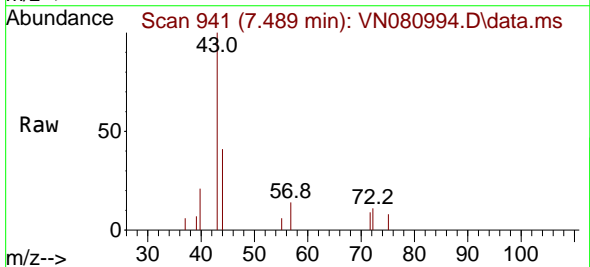
Tgt Ion:114 Resp: 400840
 Ion Ratio Lower Upper
 114 100
 63 19.6 15.9 23.9
 88 15.4 12.7 19.1

Manual Integrations
APPROVED

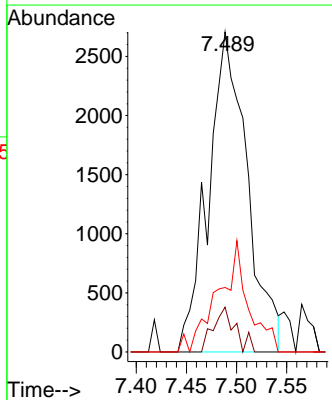
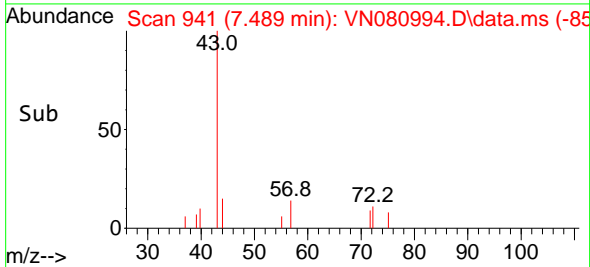
Reviewed By :John Carlone 02/12/2024
 Supervised By :Mahesh Dadoda 02/12/2024

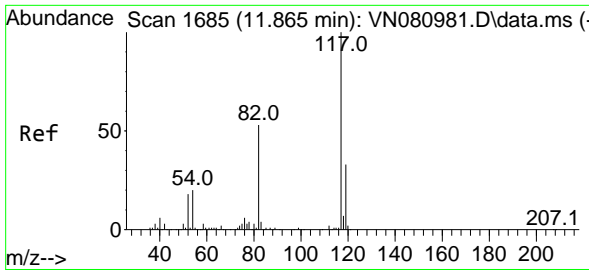


#30
 2-Butanone
 Concen: 3.337 ug/l
 RT: 7.489 min Scan# 941
 Delta R.T. 0.006 min
 Lab File: VN080994.D
 Acq: 09 Feb 2024 17:10



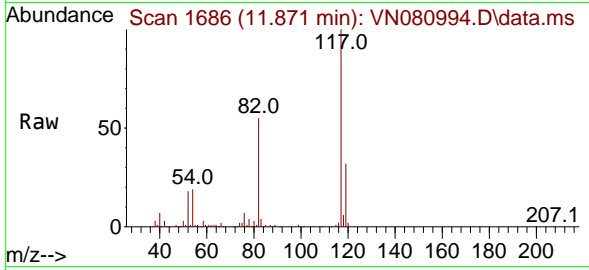
Tgt Ion: 43 Resp: 7311
 Ion Ratio Lower Upper
 43 100
 57 7.1 6.7 10.1
 72 13.5 24.0 36.0#





#57
 Chlorobenzene-d5
 Concen: 30.000 ug/l
 RT: 11.871 min Scan# 1686
 Delta R.T. 0.006 min
 Lab File: VN080994.D
 Acq: 09 Feb 2024 17:10

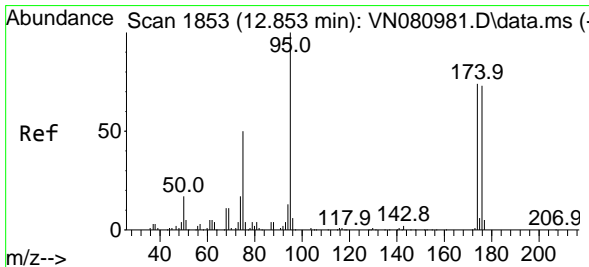
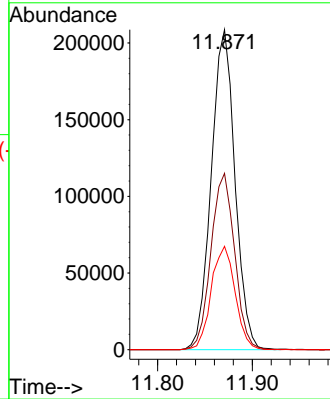
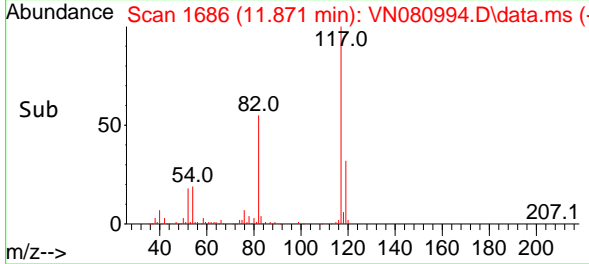
Instrument : MSVOA_N
 ClientSampleId : MANHOLE



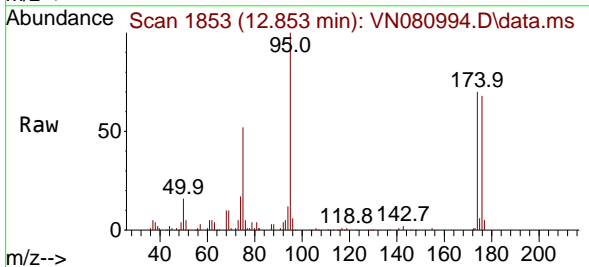
Tgt Ion:117 Resp: 362708
 Ion Ratio Lower Upper
 117 100
 82 55.1 46.6 69.8
 119 32.6 25.4 38.2

Manual Integrations
 APPROVED

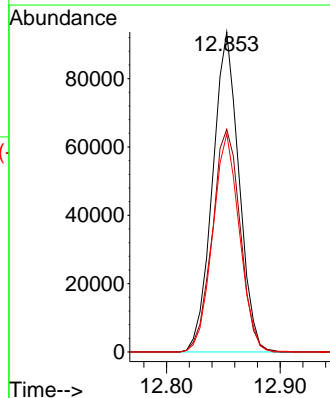
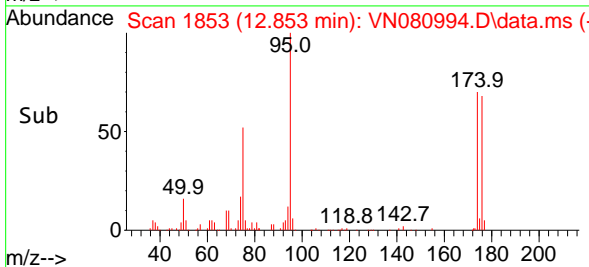
Reviewed By :John Carlone 02/12/2024
 Supervised By :Mahesh Dadoda 02/12/2024

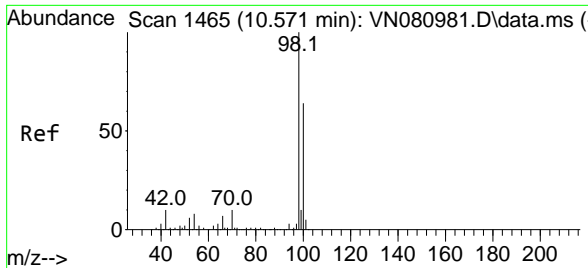


#60
 4-Bromofluorobenzene
 Concen: 27.214 ug/l
 RT: 12.853 min Scan# 1853
 Delta R.T. 0.000 min
 Lab File: VN080994.D
 Acq: 09 Feb 2024 17:10



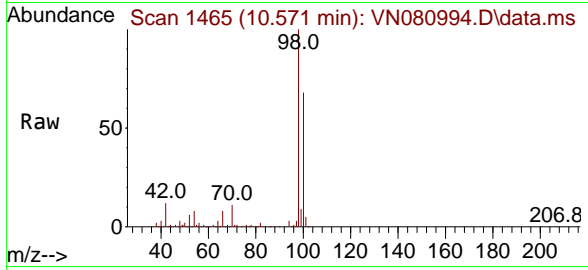
Tgt Ion: 95 Resp: 150900
 Ion Ratio Lower Upper
 95 100
 174 73.8 60.5 90.7
 176 69.3 57.8 86.6





#63
 Toluene-d8
 Concen: 29.742 ug/l
 RT: 10.571 min Scan# 14
 Delta R.T. 0.000 min
 Lab File: VN080994.D
 Acq: 09 Feb 2024 17:10

Instrument :
 MSVOA_N
 ClientSampleId :
 MANHOLE



Tgt Ion: 98 Resp: 484108
 Ion Ratio Lower Upper
 98 100
 100 66.0 52.7 79.1

Manual Integrations
APPROVED
 Reviewed By :John Carlone 02/12/2024
 Supervised By :Mahesh Dadoda 02/12/2024

