

Data Path : Z:\voasrv\HPCHEM1\MSVOA_N\Data\VN021025\
 Data File : VN085724.D
 Acq On : 10 Feb 2025 15:24
 Operator : JC\MD
 Sample : Q1289-04ME
 Misc : 5.08g/10mL/100uL/5.00mL/MSVOA_N/MEOH
 ALS Vial : 10 Sample Multiplier: 1

Instrument :
 MSVOA_N
 ClientSampleId :
 FL-DRUMS-BME

Quant Time: Feb 11 03:23:19 2025
 Quant Method : Z:\voasrv\HPCHEM1\MSVOA_N\methods\82N011425W.M
 Quant Title : SW846 8260
 QLast Update : Wed Jan 15 02:16:08 2025
 Response via : Initial Calibration

Compound	R.T.	QIon	Response	Conc	Units	Dev(Min)

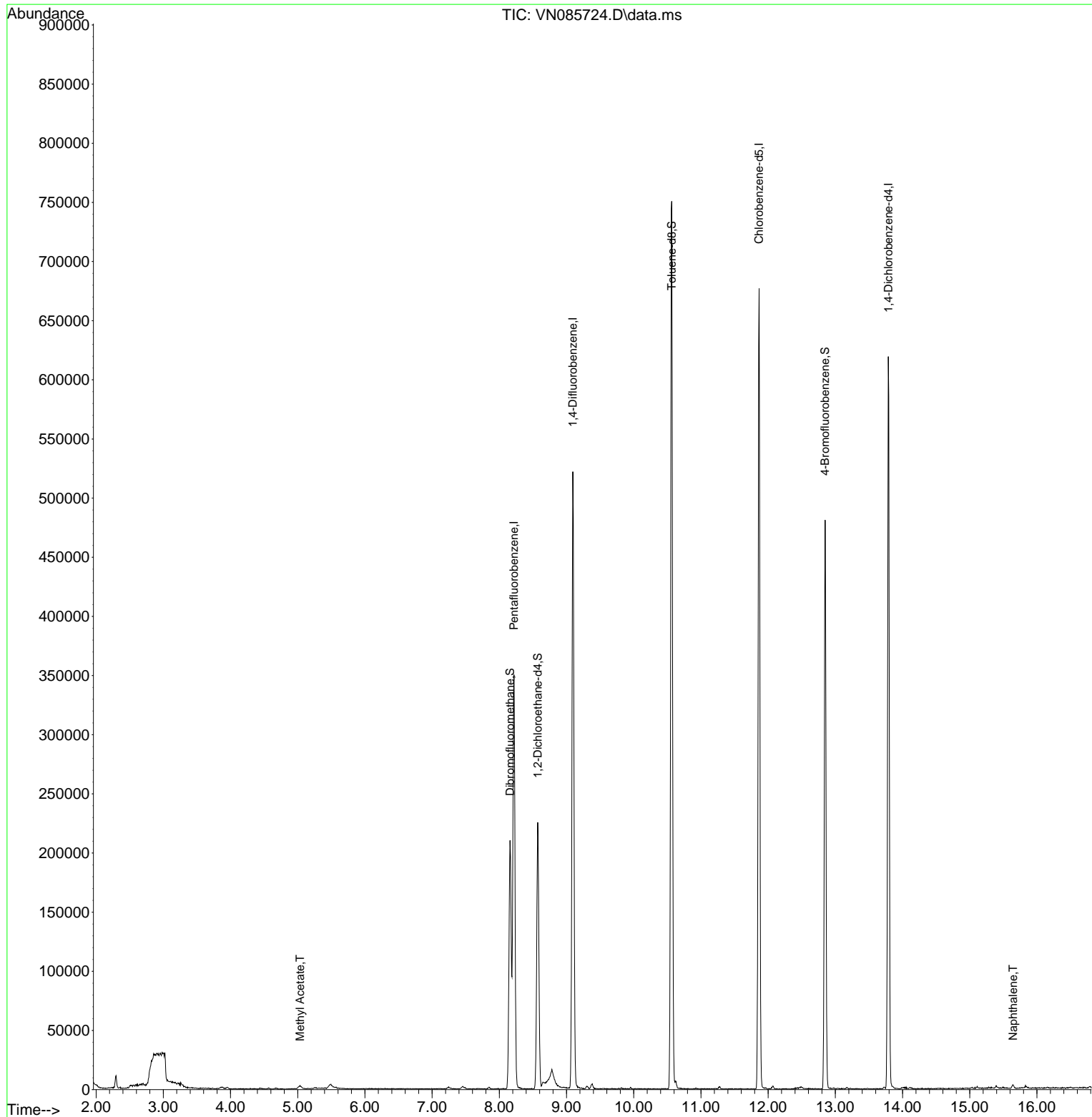
Internal Standards						
1) Pentafluorobenzene	8.218	168	247031	50.000	ug/l	0.00
34) 1,4-Difluorobenzene	9.094	114	443984	50.000	ug/l	0.00
63) Chlorobenzene-d5	11.865	117	385312	50.000	ug/l	0.00
72) 1,4-Dichlorobenzene-d4	13.788	152	168582	50.000	ug/l	0.00
System Monitoring Compounds						
33) 1,2-Dichloroethane-d4	8.571	65	181115	45.420	ug/l	0.00
Spiked Amount	50.000	Range	74 - 125	Recovery	=	90.840%
35) Dibromofluoromethane	8.159	113	151078	49.049	ug/l	0.00
Spiked Amount	50.000	Range	75 - 124	Recovery	=	98.100%
50) Toluene-d8	10.565	98	535756	48.955	ug/l	0.00
Spiked Amount	50.000	Range	86 - 113	Recovery	=	97.920%
62) 4-Bromofluorobenzene	12.847	95	167259	44.679	ug/l	0.00
Spiked Amount	50.000	Range	77 - 121	Recovery	=	89.360%
Target Compounds						
					Qvalue	
18) Methyl Acetate	5.036	43	5446	1.390	ug/l	98
95) Naphthalene	15.647	128	3782	0.499	ug/l #	96

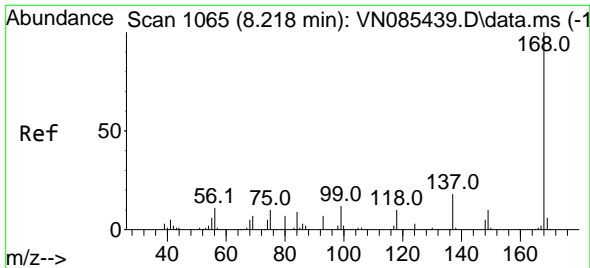
(#) = qualifier out of range (m) = manual integration (+) = signals summed

Data Path : Z:\voasrv\HPCHEM1\MSVOA_N\Data\VN021025\
 Data File : VN085724.D
 Acq On : 10 Feb 2025 15:24
 Operator : JC\MD
 Sample : Q1289-04ME
 Misc : 5.08g/10mL/100uL/5.00mL/MSVOA_N/MEOH
 ALS Vial : 10 Sample Multiplier: 1

Instrument :
 MSVOA_N
 ClientSampleId :
 FL-DRUMS-BME

Quant Time: Feb 11 03:23:19 2025
 Quant Method : Z:\voasrv\HPCHEM1\MSVOA_N\methods\82N011425W.M
 Quant Title : SW846 8260
 QLast Update : Wed Jan 15 02:16:08 2025
 Response via : Initial Calibration

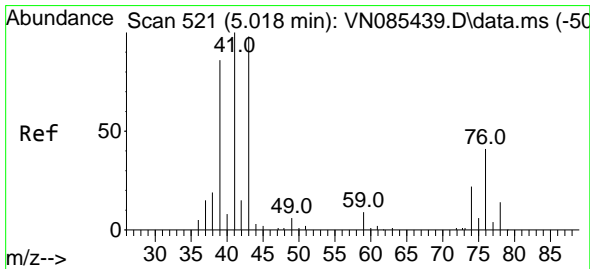
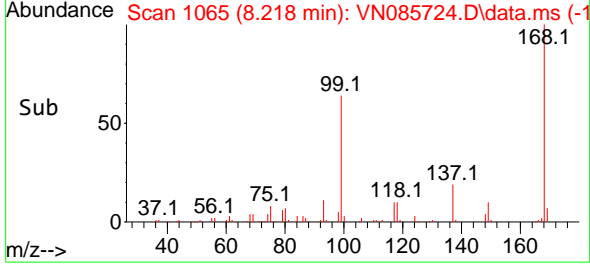
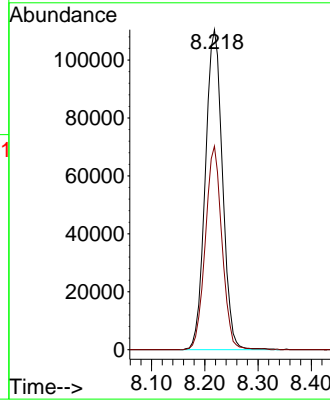
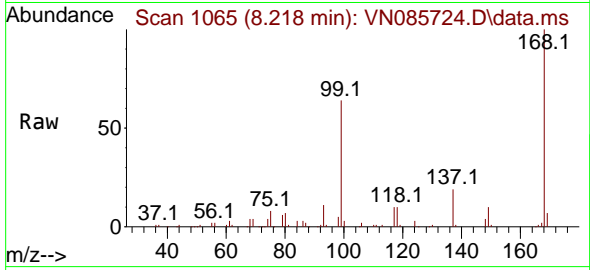




#1
 Pentafluorobenzene
 Concen: 50.000 ug/l
 RT: 8.218 min Scan# 1065
 Delta R.T. -0.000 min
 Lab File: VN085724.D
 Acq: 10 Feb 2025 15:24

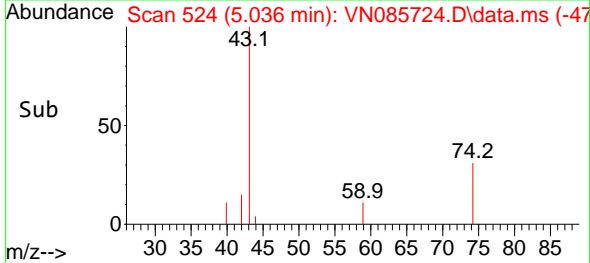
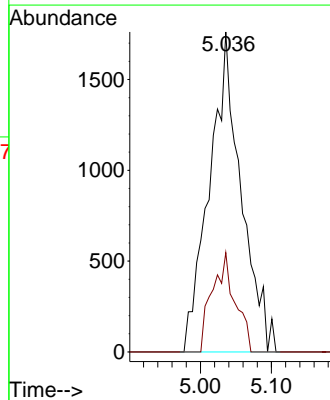
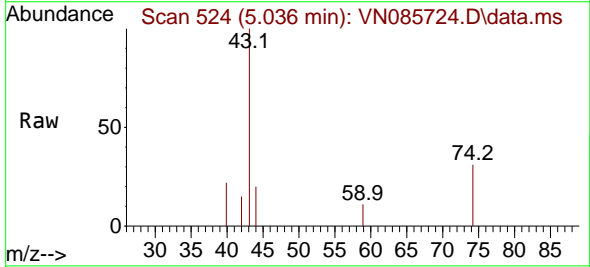
Instrument : MSVOA_N
 ClientSampleId : FL-DRUMS-BME

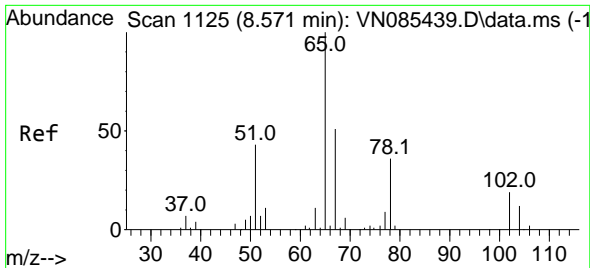
Tgt Ion:168 Resp: 247031
 Ion Ratio Lower Upper
 168 100
 99 63.6 53.6 80.4



#18
 Methyl Acetate
 Concen: 1.390 ug/l
 RT: 5.036 min Scan# 524
 Delta R.T. 0.018 min
 Lab File: VN085724.D
 Acq: 10 Feb 2025 15:24

Tgt Ion: 43 Resp: 5446
 Ion Ratio Lower Upper
 43 100
 74 22.4 18.6 28.0

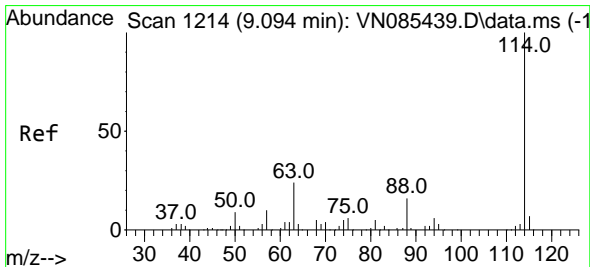
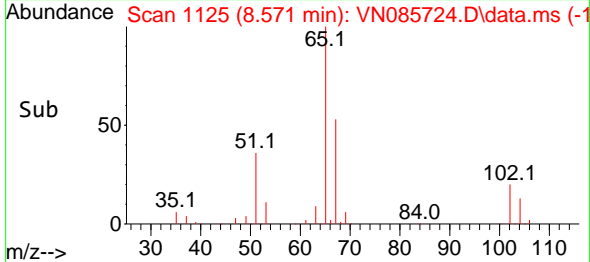
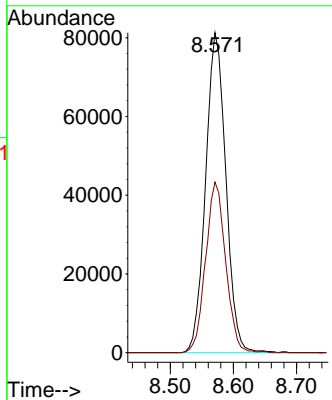
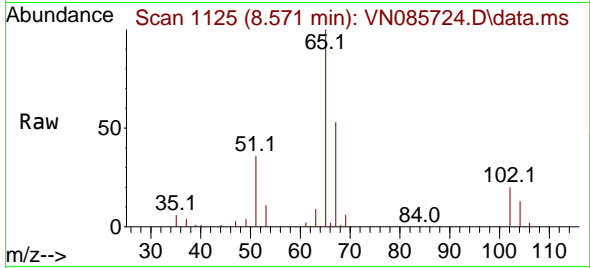




#33
 1,2-Dichloroethane-d4
 Concen: 45.420 ug/l
 RT: 8.571 min Scan# 1125
 Delta R.T. 0.000 min
 Lab File: VN085724.D
 Acq: 10 Feb 2025 15:24

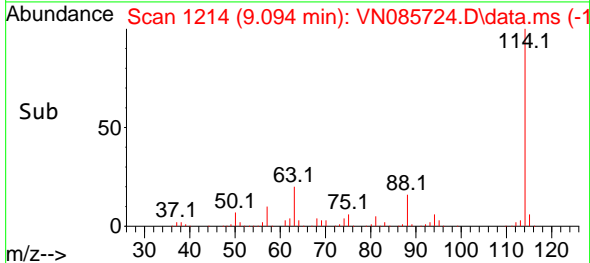
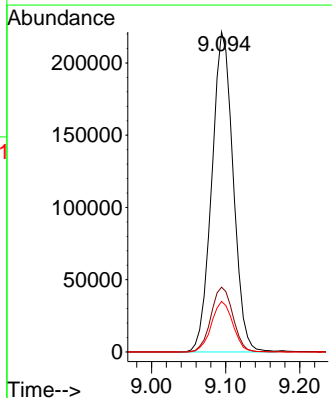
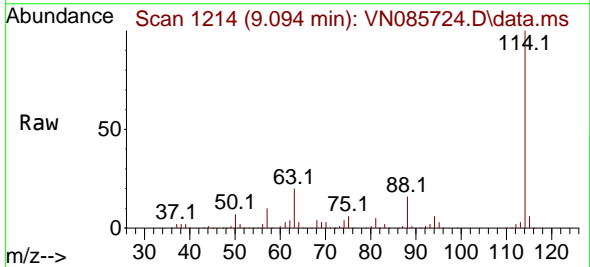
Instrument : MSVOA_N
 ClientSampleId : FL-DRUMS-BME

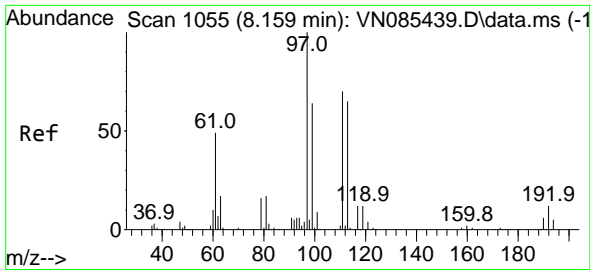
Tgt Ion: 65 Resp: 181115
 Ion Ratio Lower Upper
 65 100
 67 52.9 0.0 101.6



#34
 1,4-Difluorobenzene
 Concen: 50.000 ug/l
 RT: 9.094 min Scan# 1214
 Delta R.T. 0.000 min
 Lab File: VN085724.D
 Acq: 10 Feb 2025 15:24

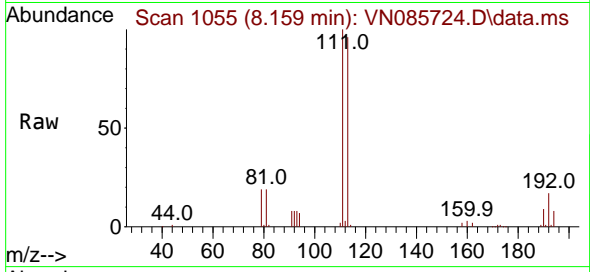
Tgt Ion:114 Resp: 443984
 Ion Ratio Lower Upper
 114 100
 63 20.2 0.0 47.6
 88 15.8 0.0 32.6



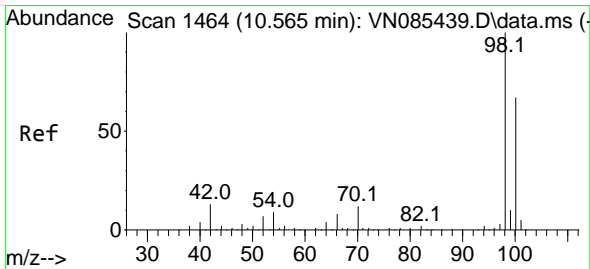
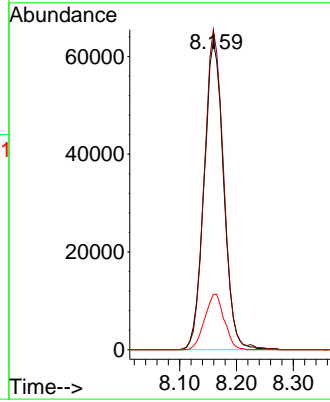
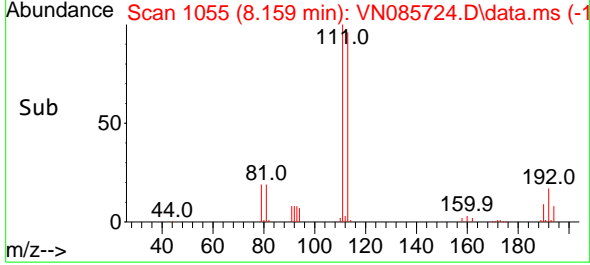


#35
 Dibromofluoromethane
 Concen: 49.049 ug/l
 RT: 8.159 min Scan# 1055
 Delta R.T. 0.000 min
 Lab File: VN085724.D
 Acq: 10 Feb 2025 15:24

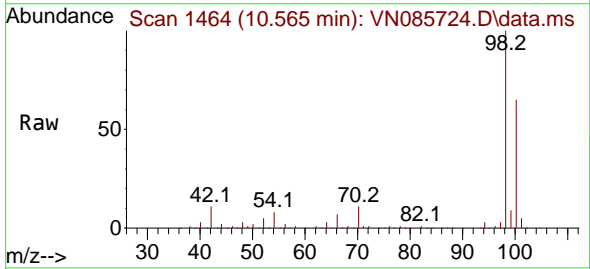
Instrument :
 MSVOA_N
 ClientSampleId :
 FL-DRUMS-BME



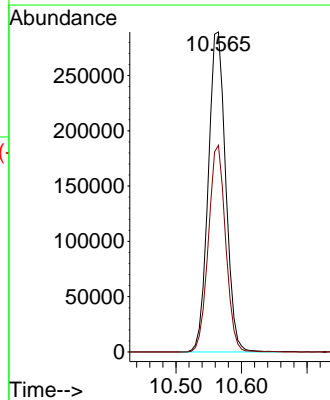
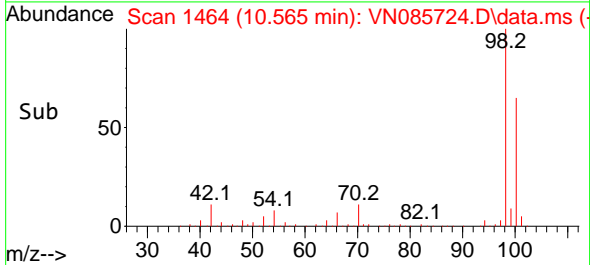
Tgt Ion:113 Resp: 151078
 Ion Ratio Lower Upper
 113 100
 111 102.5 82.7 124.1
 192 17.9 14.3 21.5

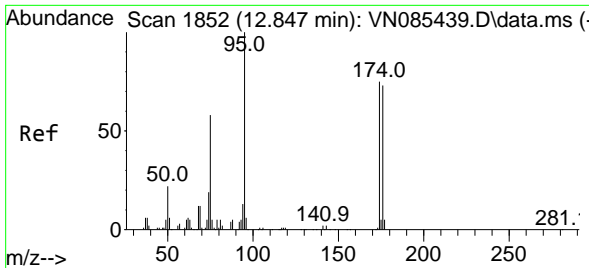


#50
 Toluene-d8
 Concen: 48.955 ug/l
 RT: 10.565 min Scan# 1464
 Delta R.T. 0.000 min
 Lab File: VN085724.D
 Acq: 10 Feb 2025 15:24



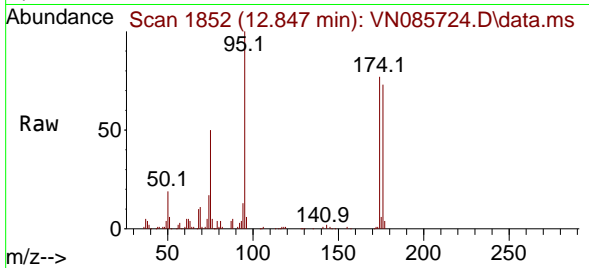
Tgt Ion: 98 Resp: 535756
 Ion Ratio Lower Upper
 98 100
 100 63.6 52.2 78.4



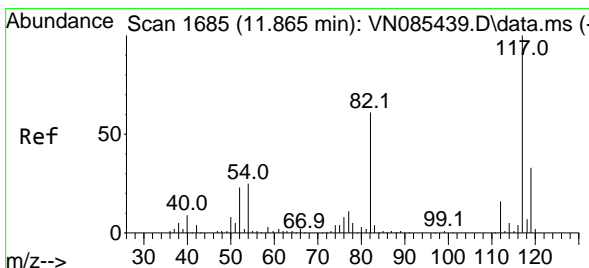
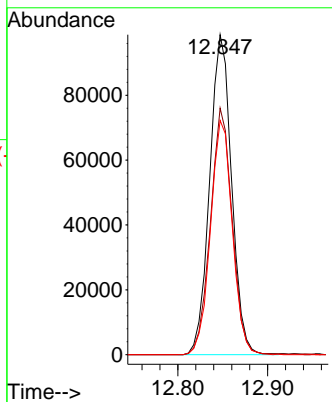
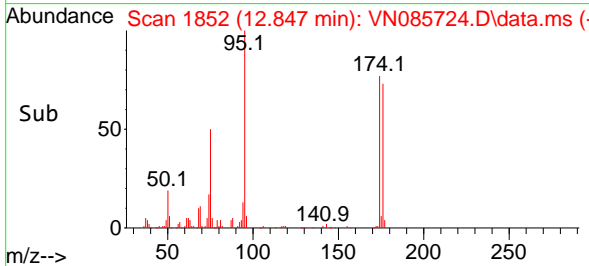


#62
 4-Bromofluorobenzene
 Concen: 44.679 ug/l
 RT: 12.847 min Scan# 1852
 Delta R.T. 0.000 min
 Lab File: VN085724.D
 Acq: 10 Feb 2025 15:24

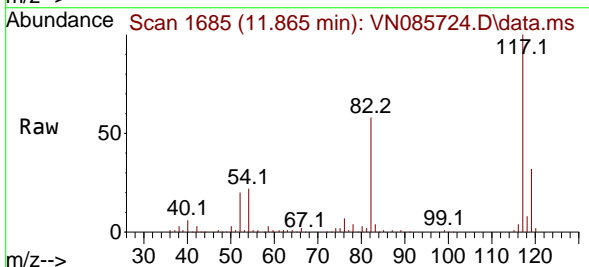
Instrument : MSVOA_N
 ClientSampleId : FL-DRUMS-BME



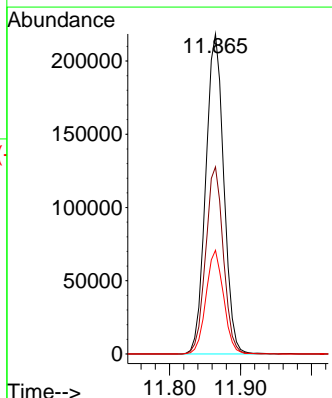
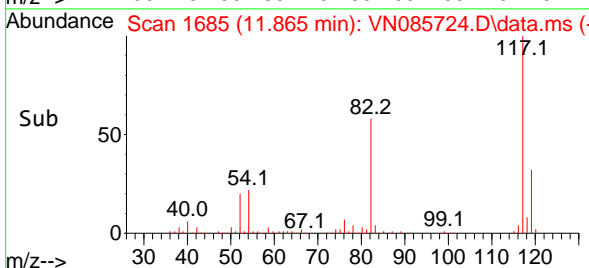
Tgt Ion: 95 Resp: 167259
 Ion Ratio Lower Upper
 95 100
 174 76.6 0.0 145.0
 176 72.9 0.0 142.4

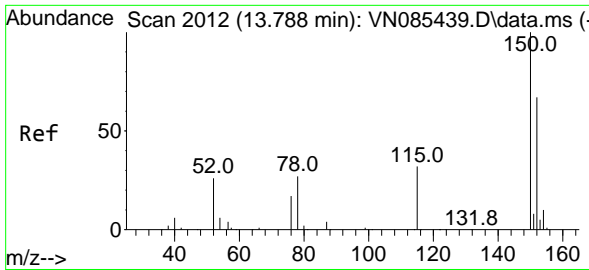


#63
 Chlorobenzene-d5
 Concen: 50.000 ug/l
 RT: 11.865 min Scan# 1685
 Delta R.T. 0.000 min
 Lab File: VN085724.D
 Acq: 10 Feb 2025 15:24



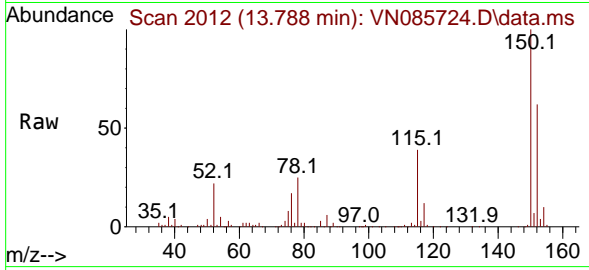
Tgt Ion: 117 Resp: 385312
 Ion Ratio Lower Upper
 117 100
 82 58.5 48.6 72.8
 119 32.4 26.6 39.8



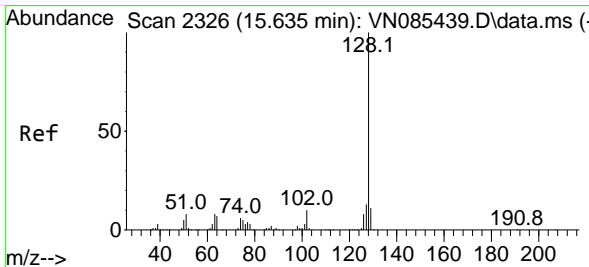
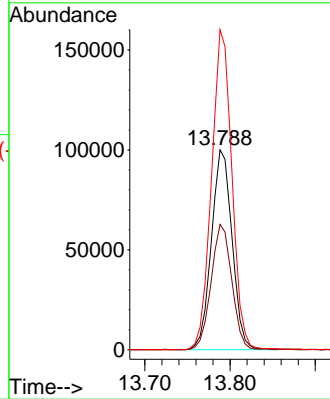
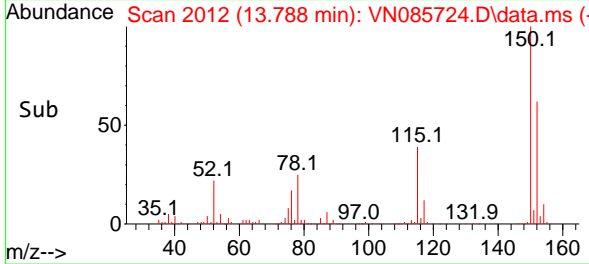


#72
 1,4-Dichlorobenzene-d4
 Concen: 50.000 ug/l
 RT: 13.788 min Scan# 20
 Delta R.T. 0.000 min
 Lab File: VN085724.D
 Acq: 10 Feb 2025 15:24

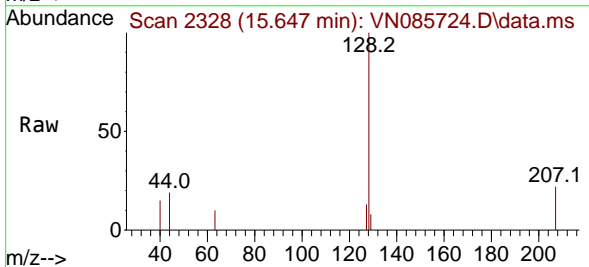
Instrument :
 MSVOA_N
 ClientSampleId :
 FL-DRUMS-BME



Tgt Ion:152 Resp: 168582
 Ion Ratio Lower Upper
 152 100
 115 62.7 31.1 93.3
 150 157.5 0.0 343.6



#95
 Naphthalene
 Concen: 0.499 ug/l
 RT: 15.647 min Scan# 2328
 Delta R.T. 0.012 min
 Lab File: VN085724.D
 Acq: 10 Feb 2025 15:24



Tgt Ion:128 Resp: 3782
 Ion Ratio Lower Upper
 128 100
 127 16.1 10.6 16.0#
 129 10.9 8.8 13.2

