

Data Path : Z:\VOASRV\HPCHEM1\MSVOA N\DATA\VN021119\  
 Data File : VN053714.D  
 Acq On : 11 Feb 2019 19:27  
 Operator : JC/SP  
 Sample : PB116968TB  
 Misc : 5.00mL/MSVOA N/WATER  
 ALS Vial : 22 Sample Multiplier: 1

Instrument :  
 MSVOA\_N  
 ClientSampleID :  
 PB116968TB

Quant Time: Feb 11 23:21:14 2019  
 Quant Method : Z:\VOASRV\HPCHEM1\MSVOA\_N\METHODS\82N013019W.M  
 Quant Title : SW846 8260  
 QLast Update : Fri Feb 01 09:11:52 2019  
 Response via : Initial Calibration

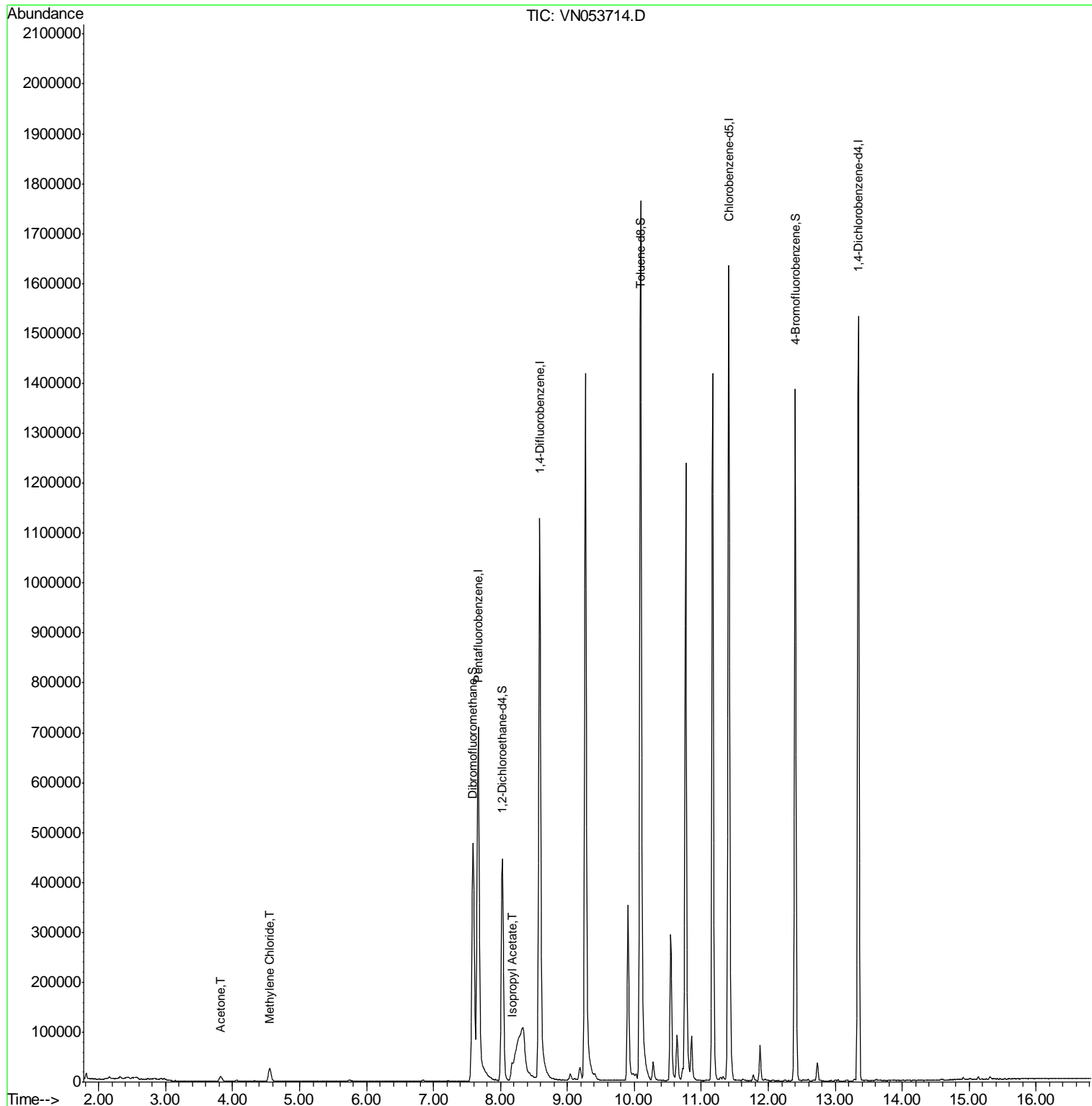
Internal Standards	R.T.	QIon	Response	Conc	Units	Dev(Min)
1) Pentafluorobenzene	7.67	168	710423	50.00	ug/l	0.00
34) 1,4-Difluorobenzene	8.59	114	1188873	50.00	ug/l	0.00
63) Chlorobenzene-d5	11.41	117	1089062	50.00	ug/l	0.00
72) 1,4-Dichlorobenzene-d4	13.35	152	445504	50.00	ug/l	0.00
System Monitoring Compounds						
33) 1,2-Dichloroethane-d4	8.03	65	384040	53.89	ug/l	0.00
Spiked Amount	50.000		Recovery	=	107.78%	
35) Dibromofluoromethane	7.59	113	373627	49.74	ug/l	0.00
Spiked Amount	50.000		Recovery	=	99.48%	
50) Toluene-d8	10.09	98	1437864	50.98	ug/l	0.00
Spiked Amount	50.000		Recovery	=	101.96%	
62) 4-Bromofluorobenzene	12.40	95	478882	50.90	ug/l	0.00
Spiked Amount	50.000		Recovery	=	101.80%	
Target Compounds						
16) Acetone	3.82	43	19180	10.492	ug/l	97
20) Methylene Chloride	4.56	84	20431	2.664	ug/l	95
43) Isopropyl Acetate	8.17	43	36852	3.188	ug/l #	80

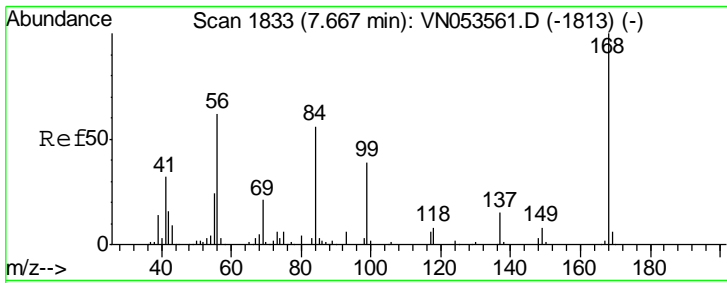
(#) = qualifier out of range (m) = manual integration (+) = signals summed

Data Path : Z:\VOASRV\HPCHEM1\MSVOA N\DATA\VN021119\  
 Data File : VN053714.D  
 Acq On : 11 Feb 2019 19:27  
 Operator : JC/SP  
 Sample : PB116968TB  
 Misc : 5.00mL/MSVOA N/WATER  
 ALS Vial : 22 Sample Multiplier: 1

Instrument :  
 MSVOA\_N  
 ClientSampled :  
 PB116968TB

Quant Time: Feb 11 23:21:14 2019  
 Quant Method : Z:\VOASRV\HPCHEM1\MSVOA\_N\METHODS\82N013019W.M  
 Quant Title : SW846 8260  
 QLast Update : Fri Feb 01 09:11:52 2019  
 Response via : Initial Calibration

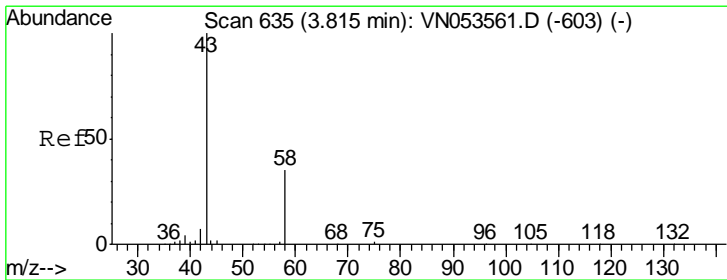
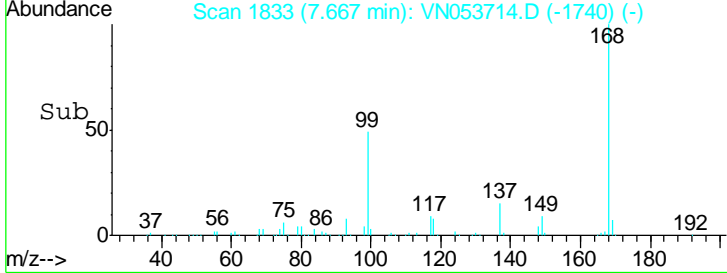
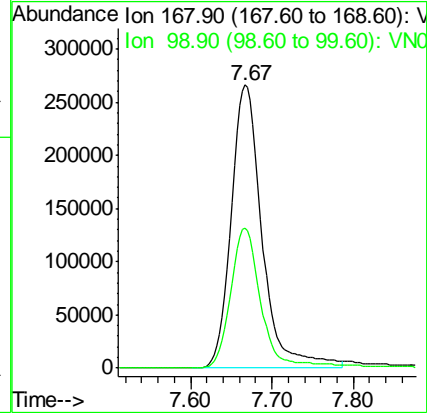
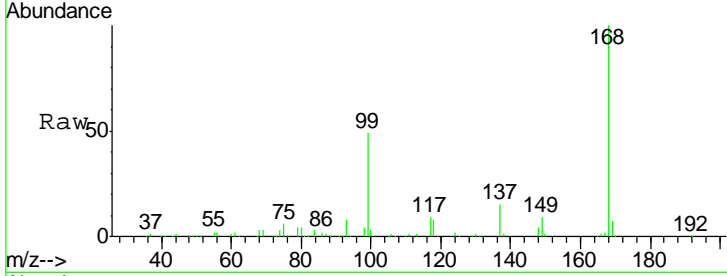




#1  
 Pentafluorobenzene  
 Concen: 50.000 ug/l  
 RT: 7.67 min Scan# 1833  
 Delta R.T. 0.00 min  
 Lab File: VN053714.D  
 Acq: 11 Feb 2019 19:27

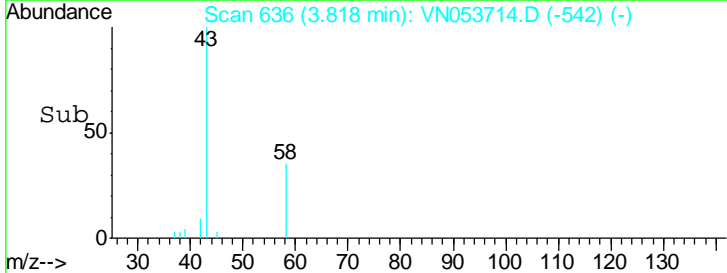
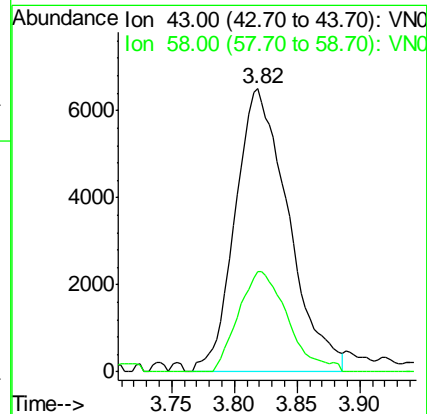
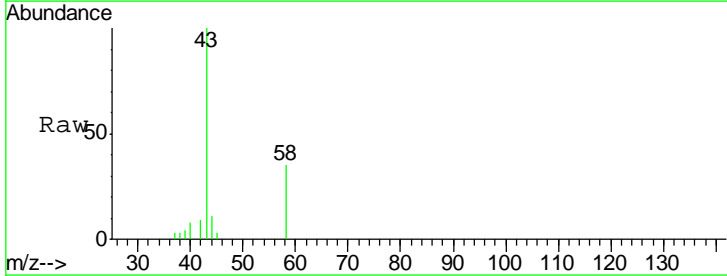
Instrument :  
 MSVOA\_N  
 ClientSampled :  
 PB116968TB

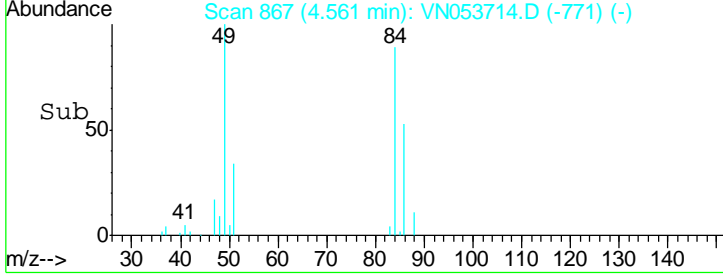
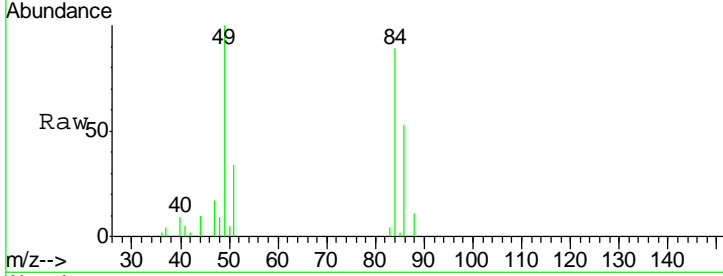
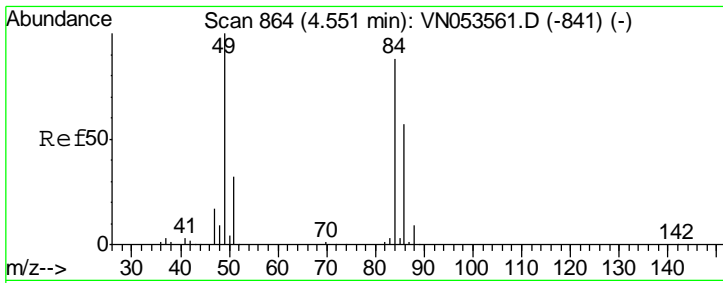
Tgt Ion: 168 Resp: 710423  
 Ion Ratio Lower Upper  
 168 100  
 99 49.3 39.1 58.7



#16  
 Acetone  
 Concen: 10.492 ug/l  
 RT: 3.82 min Scan# 636  
 Delta R.T. 0.00 min  
 Lab File: VN053714.D  
 Acq: 11 Feb 2019 19:27

Tgt Ion: 43 Resp: 19180  
 Ion Ratio Lower Upper  
 43 100  
 58 35.3 27.1 40.7



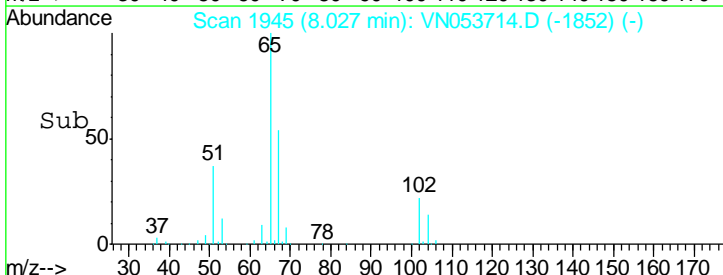
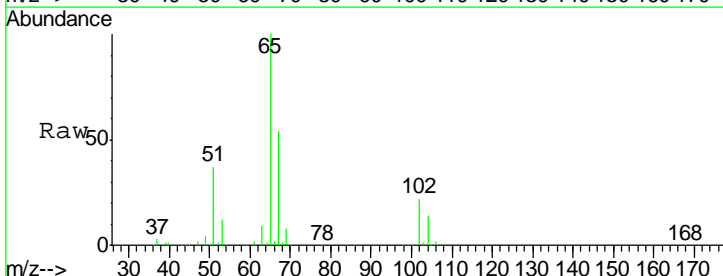
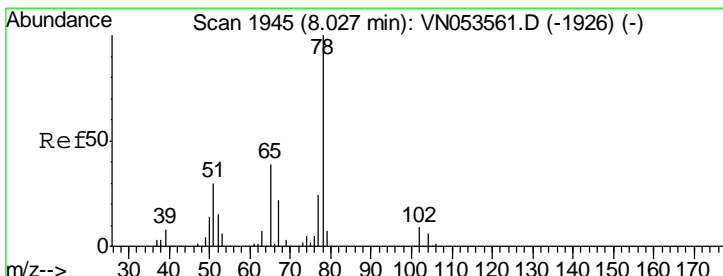
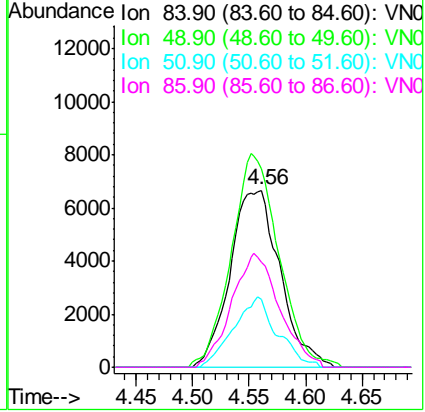


#20  
 Methylene Chloride  
 Concen: 2.664 ug/l  
 RT: 4.56 min Scan# 867  
 Delta R.T. 0.01 min  
 Lab File: VN053714.D  
 Acq: 11 Feb 2019 19:27

Instrument :  
 MSVOA\_N  
 ClientSampled :  
 PB116968TB

Tgt Ion: 84 Resp: 20431

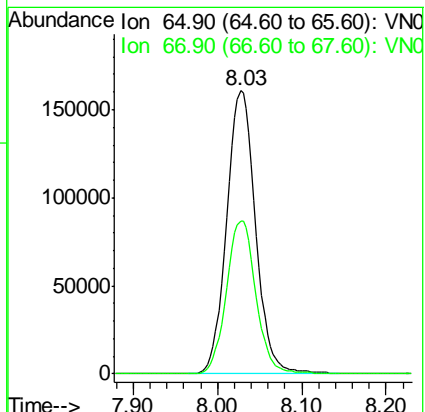
Ion	Ratio	Lower	Upper
84	100		
49	112.6	94.3	141.5
51	38.2	29.4	44.2
86	59.6	51.4	77.0

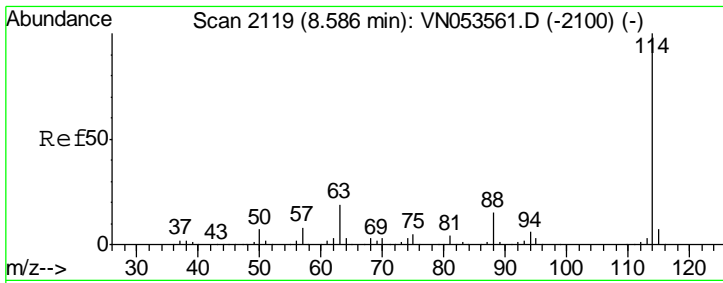


#33  
 1,2-Dichloroethane-d4  
 Concen: 53.886 ug/l  
 RT: 8.03 min Scan# 1945  
 Delta R.T. 0.00 min  
 Lab File: VN053714.D  
 Acq: 11 Feb 2019 19:27

Tgt Ion: 65 Resp: 384040

Ion	Ratio	Lower	Upper
65	100		
67	55.2	0.0	111.2

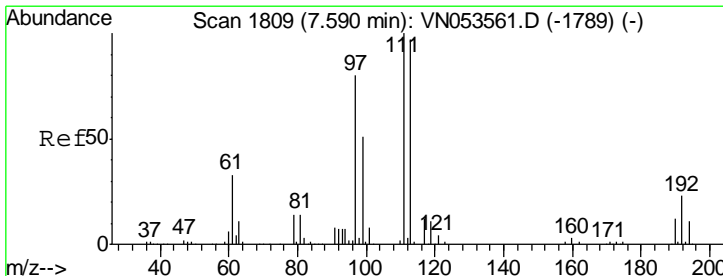
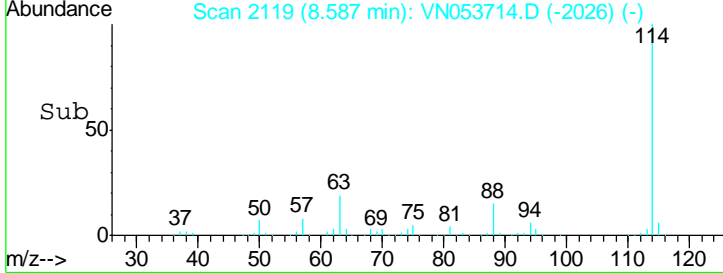
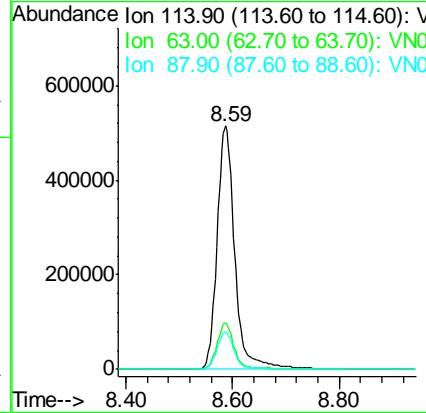
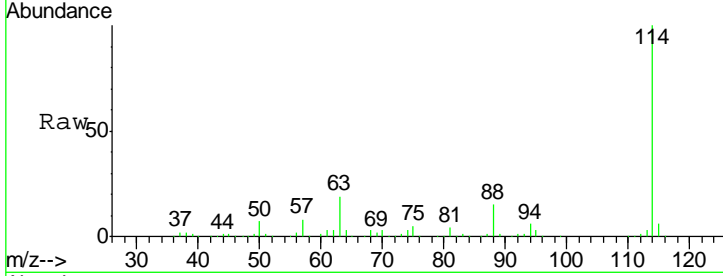




#34  
 1,4-Difluorobenzene  
 Concen: 50.000 ug/l  
 RT: 8.59 min Scan# 2119  
 Delta R.T. 0.00 min  
 Lab File: VN053714.D  
 Acq: 11 Feb 2019 19:27

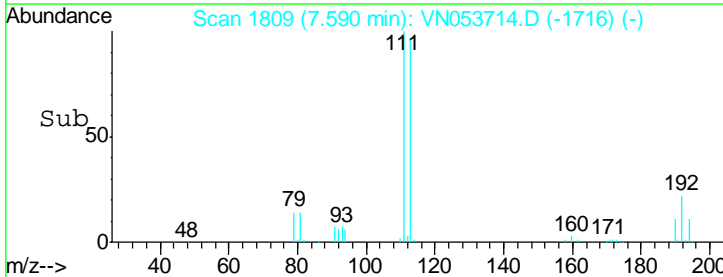
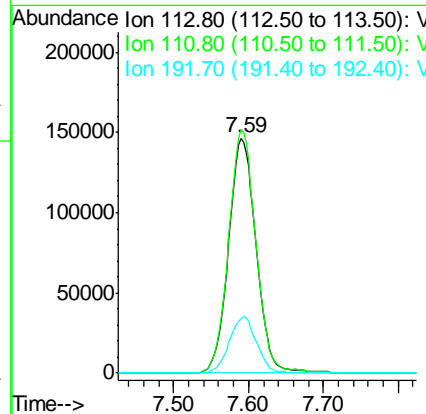
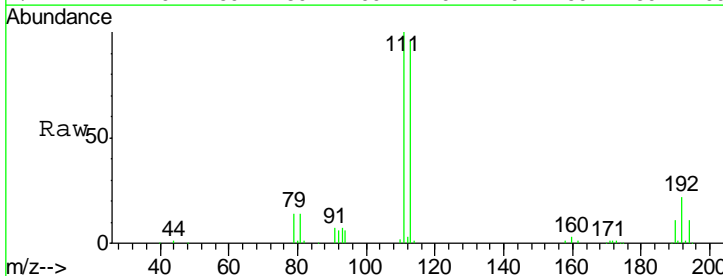
Instrument : MSVOA\_N  
 ClientSampled : PB116968TB

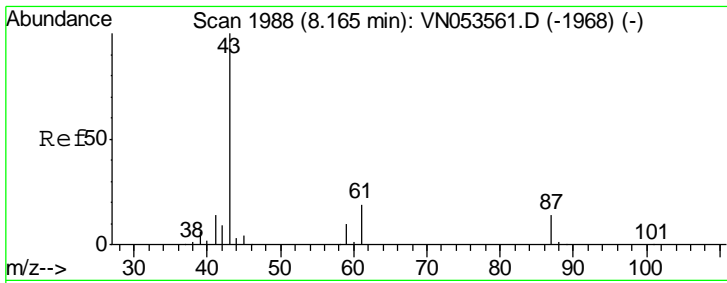
Tgt Ion	Resp	Lower	Upper
114	1188873		
63	19.3	0.0	38.6
88	15.2	0.0	30.4



#35  
 Dibromofluoromethane  
 Concen: 49.736 ug/l  
 RT: 7.59 min Scan# 1809  
 Delta R.T. 0.00 min  
 Lab File: VN053714.D  
 Acq: 11 Feb 2019 19:27

Tgt Ion	Resp	Lower	Upper
113	373627		
111	102.3	81.1	121.7
192	23.6	18.2	27.2

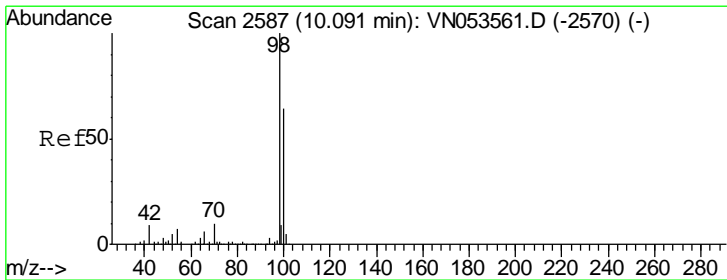
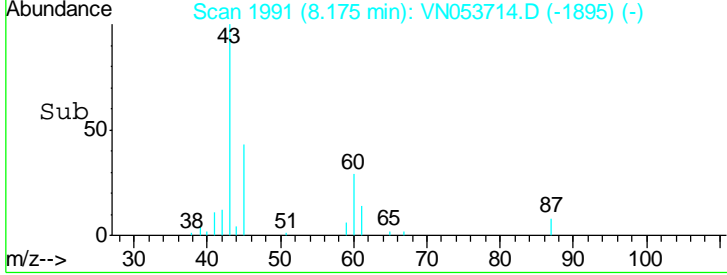
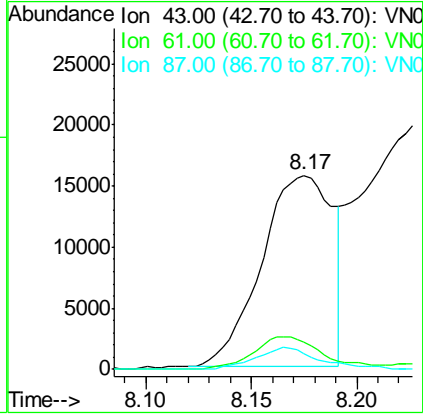
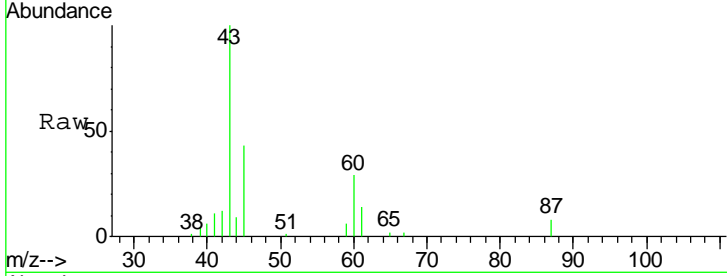




#43  
 Isopropyl Acetate  
 Concen: 3.188 ug/l  
 RT: 8.17 min Scan# 1991  
 Delta R.T. 0.01 min  
 Lab File: VN053714.D  
 Acq: 11 Feb 2019 19:27

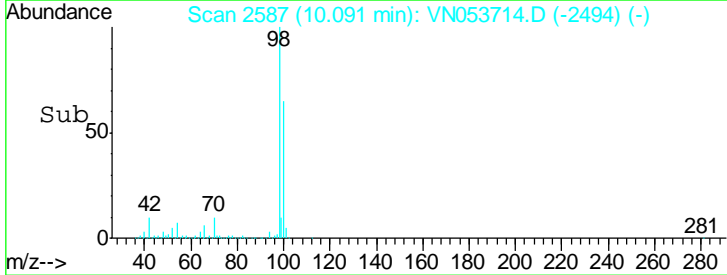
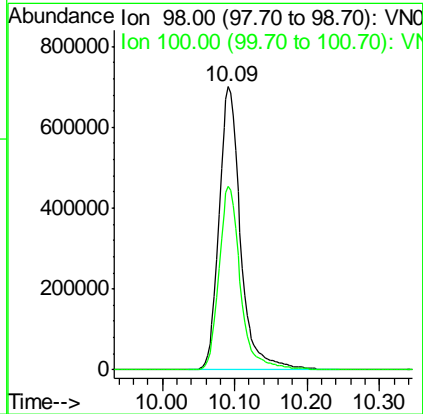
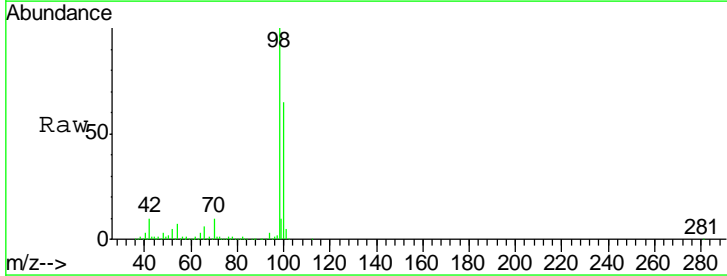
Instrument :  
 MSVOA\_N  
 ClientSampled :  
 PB116968TB

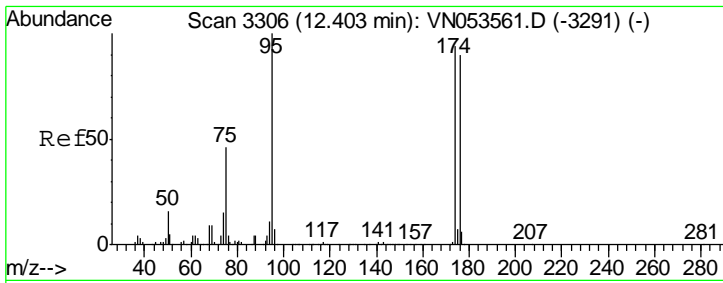
Tgt Ion	Resp	Lower	Upper
43	100		
61	16.5	23.9	35.9#
87	10.3	11.0	16.6#



#50  
 Toluene-d8  
 Concen: 50.976 ug/l  
 RT: 10.09 min Scan# 2587  
 Delta R.T. 0.00 min  
 Lab File: VN053714.D  
 Acq: 11 Feb 2019 19:27

Tgt Ion	Resp	Lower	Upper
98	100		
100	64.7	51.4	77.0

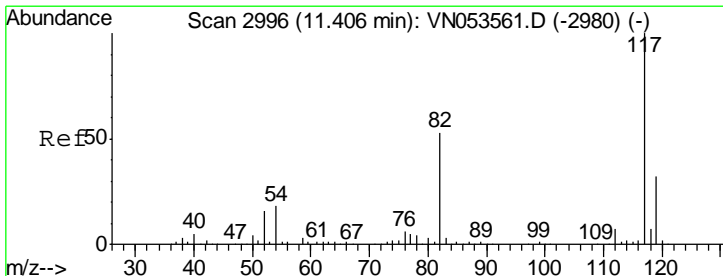
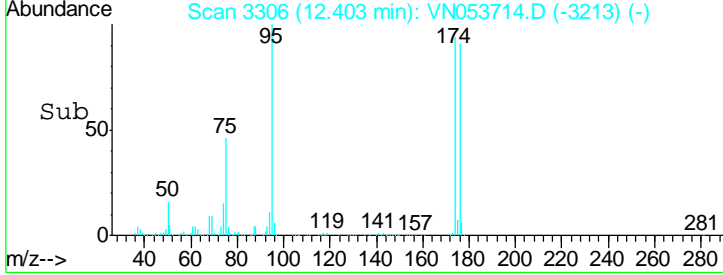
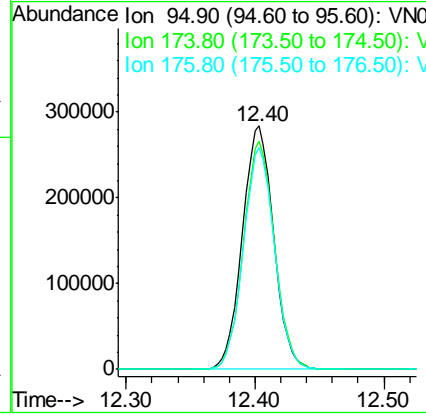
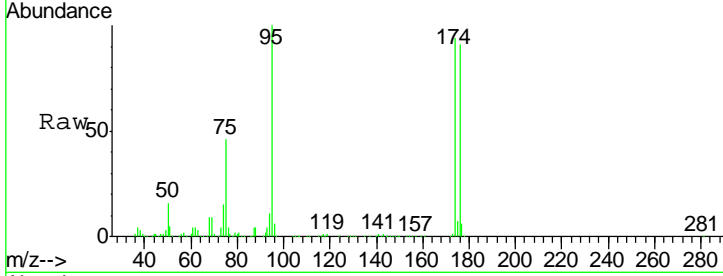




#62  
 4-Bromofluorobenzene  
 Concen: 50.905 ug/l  
 RT: 12.40 min Scan# 3306  
 Delta R.T. 0.00 min  
 Lab File: VN053714.D  
 Acq: 11 Feb 2019 19:27

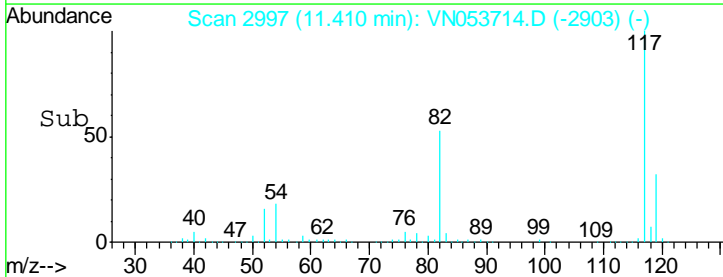
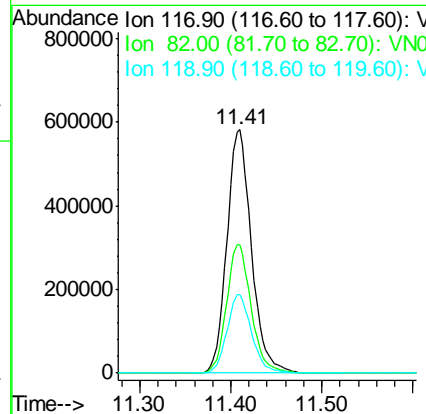
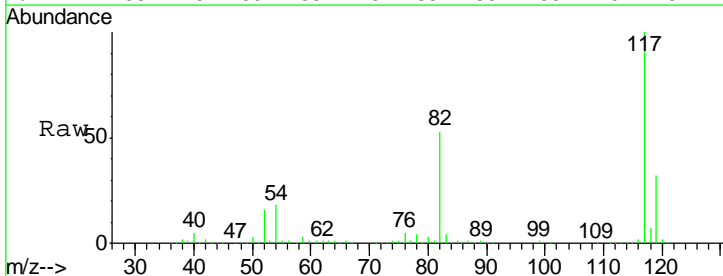
Instrument :  
 MSVOA\_N  
 ClientSampled :  
 PB116968TB

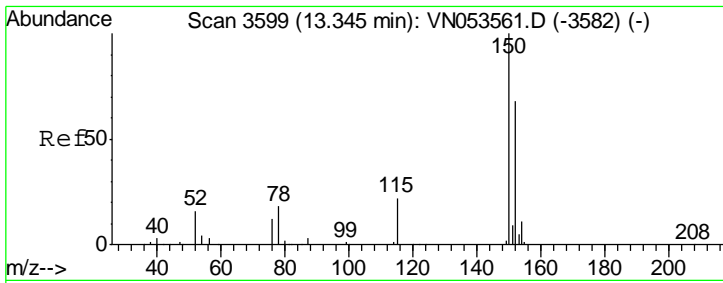
Tgt Ion	Resp	Lower	Upper
95	478882		
174	93.1	0.0	183.2
176	90.4	0.0	177.4



#63  
 Chlorobenzene-d5  
 Concen: 50.000 ug/l  
 RT: 11.41 min Scan# 2997  
 Delta R.T. 0.00 min  
 Lab File: VN053714.D  
 Acq: 11 Feb 2019 19:27

Tgt Ion	Resp	Lower	Upper
117	1089062		
82	52.6	42.9	64.3
119	32.5	26.0	39.0





#72  
 1,4-Dichlorobenzene-d4  
 Concen: 50.000 ug/l  
 RT: 13.35 min Scan# 3599  
 Delta R.T. 0.00 min  
 Lab File: VN053714.D  
 Acq: 11 Feb 2019 19:27

Instrument : MSVOA\_N  
 ClientSampled : PB116968TB

Tot Ion:152 Resp: 445504

Ion	Ratio	Lower	Upper
152	100		
115	55.2	27.8	83.4
150	158.2	0.0	349.0

