

Data Path : Z:\voasrv\HPCHEM1\MSVOA_N\Data\VN021221\
 Data File : VN065834.D
 Acq On : 12 Feb 2021 13:26
 Operator : JC/MD
 Sample : VN0212WBL02
 Misc : 5.00mL/MSVOA_N/WATER
 ALS Vial : 5 Sample Multiplier: 1

Instrument :
 MSVOA_N
 ClientSampleId :
 VN0212WBL02

Integration Parameters: RTEINT.P
 Integrator: RTE
 Smoothing : ON Filtering: 5
 Sampling : 1 Min Area: 3 % of largest Peak
 Start Thrs: 0.2 Max Peaks: 100
 Stop Thrs : 0 Peak Location: TOP

If leading or trailing edge < 100 prefer < Baseline drop else tangent >
 Peak separation: 5

Method : Z:\voasrv\HPCHEM1\MSVOA_N\methods\82N012521W.M
 Title : SW846 8260

Signal : TIC: VN065834.D\data.ms

peak #	R.T. min	first scan	max scan	last scan	PK TY	peak height	corr. area	corr. % max.	% of total
1	7.547	1787	1806	1817	rBV	84854	207040	27.06%	5.557%
2	7.621	1817	1829	1856	rVB	141625	337685	44.13%	9.064%
3	7.984	1926	1942	1967	rBV	89089	210718	27.54%	5.656%
4	8.547	2101	2117	2141	rBV	253066	525066	68.61%	14.094%
5	10.055	2572	2586	2615	rBV	417668	765248	100.00%	20.541%
6	11.376	2984	2997	3022	rBV	389284	692450	90.49%	18.587%
7	12.373	3294	3307	3335	rBV	273885	484555	63.32%	13.006%
8	13.312	3587	3599	3623	rBV	284500	502772	65.70%	13.495%

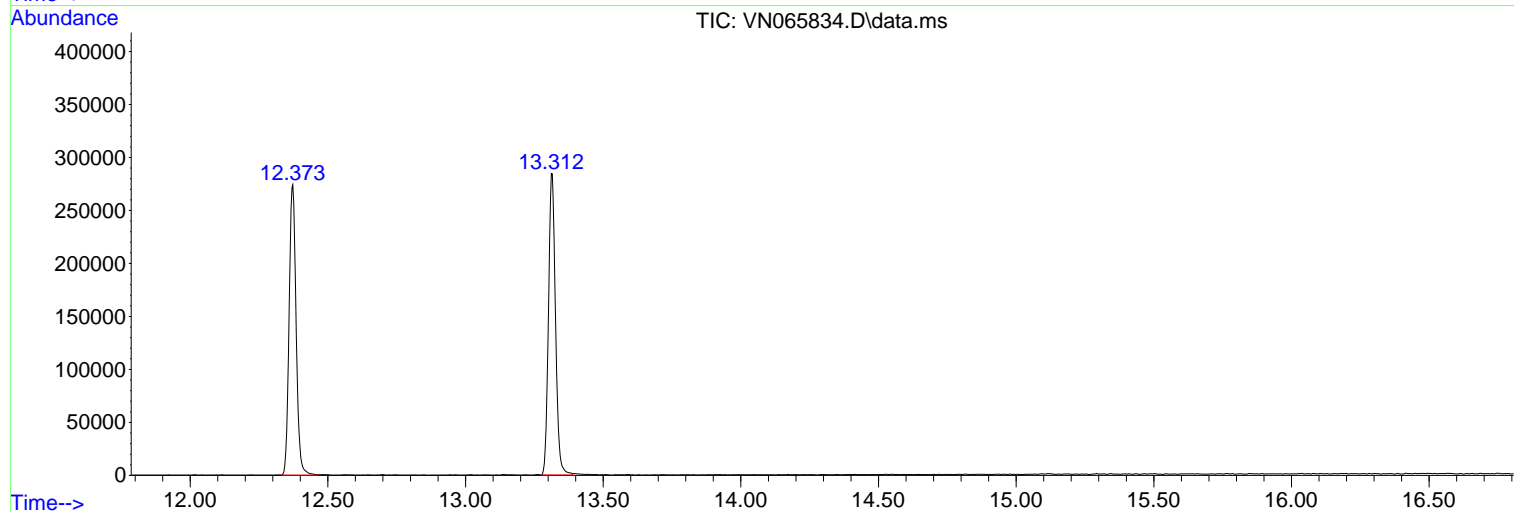
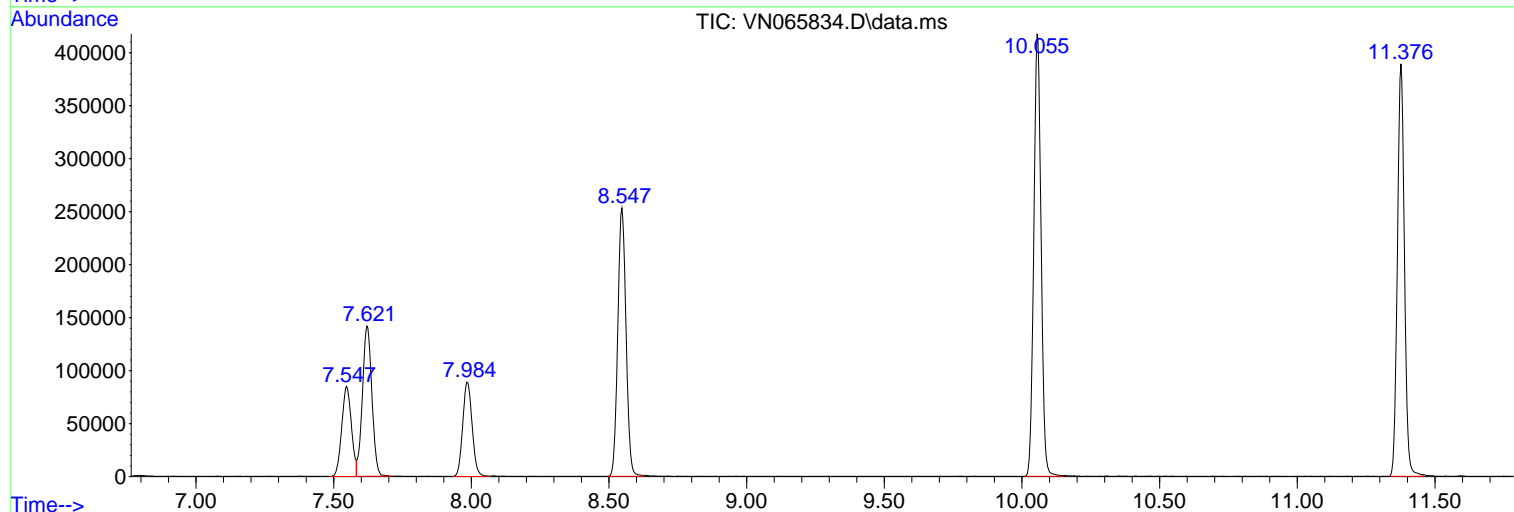
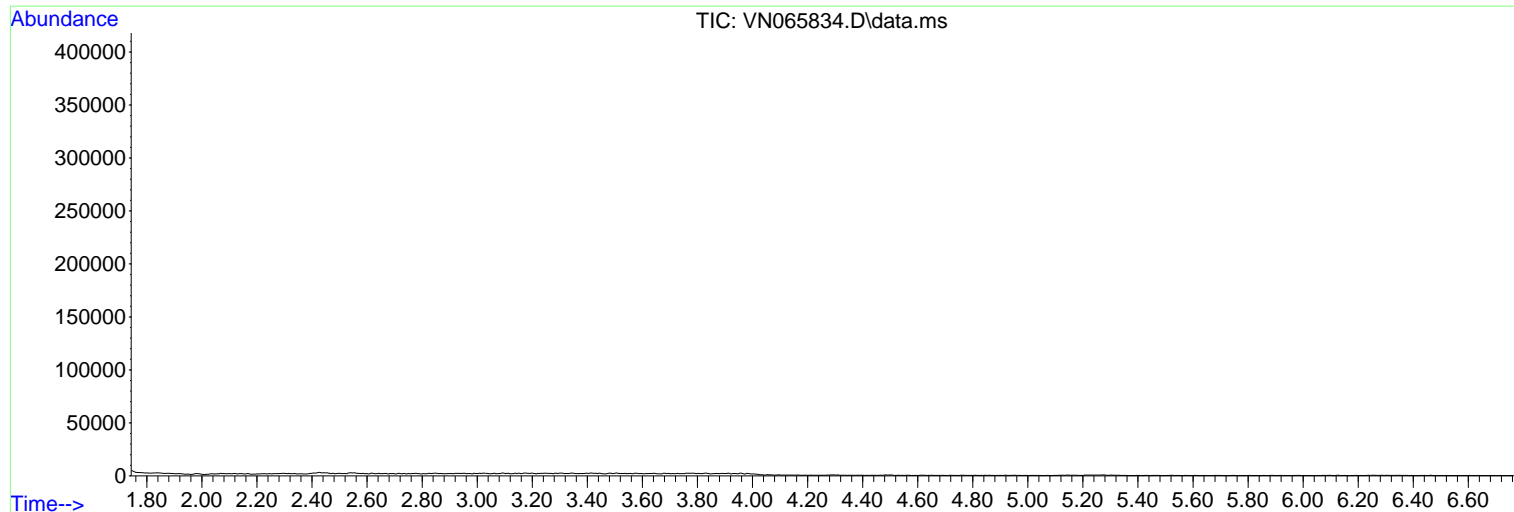
Sum of corrected areas: 3725534

Data Path : Z:\voasrv\HPCHEM1\MSVOA_N\Data\VN021221\
Data File : VN065834.D
Acq On : 12 Feb 2021 13:26
Operator : JC/MD
Sample : VN0212WBL02
Misc : 5.00mL/MSVOA_N/WATER
ALS Vial : 5 Sample Multiplier: 1

Instrument :
MSVOA_N
ClientSampleId :
VN0212WBL02

Quant Method : Z:\voasrv\HPCHEM1\MSVOA_N\methods\82N012521W.M
Quant Title : SW846 8260

TIC Library : C:\DATABASE\NIST11.L
TIC Integration Parameters: LSCINT.P



Library Search Compound Report

Data Path : Z:\voasrv\HPCHEM1\MSVOA_N\Data\VN021221\
Data File : VN065834.D
Acq On : 12 Feb 2021 13:26
Operator : JC/MD
Sample : VN0212WBL02
Misc : 5.00mL/MSVOA_N/WATER
ALS Vial : 5 Sample Multiplier: 1

Instrument :
MSVOA_N
ClientSampleId :
VN0212WBL02

Quant Method : Z:\voasrv\HPCHEM1\MSVOA_N\methods\82N012521W.M
Quant Title : SW846 8260

TIC Library : C:\DATABASE\NIST11.L
TIC Integration Parameters: LSCINT.P

No Library Search Compounds Detected

Data Path : Z:\voasrv\HPCHEM1\MSVOA_N\Data\VN021221\
Data File : VN065834.D
Acq On : 12 Feb 2021 13:26
Operator : JC/MD
Sample : VN0212WBL02
Misc : 5.00mL/MSVOA_N/WATER
ALS Vial : 5 Sample Multiplier: 1

Instrument :
MSVOA_N
ClientSampleId :
VN0212WBL02

Quant Method : Z:\voasrv\HPCHEM1\MSVOA_N\methods\82N012521W.M
Quant Title : SW846 8260

TIC Library : C:\DATABASE\NIST11.L
TIC Integration Parameters: LSCINT.P

TIC Top Hit name	RT	EstConc	Units	Response	--Internal Standard--		
					#	RT	Resp Conc
