

Data Path : Z:\VOASRV\HPCHEM1\MSVOA N\DATA\VN021320\
 Data File : VN060087.D
 Acq On : 13 Feb 2020 12:20
 Operator : JC/MD
 Sample : PB126782TB
 Misc : 5.00mL/MSVOA N/WATER
 ALS Vial : 7 Sample Multiplier: 1

Instrument :
 MSVOA_N
 ClientSampled :

Quant Time: Feb 14 04:55:14 2020
 Quant Method : Z:\VOASRV\HPCHEM1\MSVOA_N\METHODS\82N021220W.M
 Quant Title : SW846 8260
 QLast Update : Wed Feb 12 14:12:21 2020
 Response via : Initial Calibration

Internal Standards	R.T.	QIon	Response	Conc	Units	Dev(Min)
1) Pentafluorobenzene	7.64	168	191535	50.00	ug/l	0.00
34) 1,4-Difluorobenzene	8.57	114	296859	50.00	ug/l	0.00
63) Chlorobenzene-d5	11.40	117	272472	50.00	ug/l	0.00
72) 1,4-Dichlorobenzene-d4	13.34	152	119349	50.00	ug/l	0.00

System Monitoring Compounds	R.T.	QIon	Response	Conc	Units	Dev(Min)
33) 1,2-Dichloroethane-d4	8.00	65	109562	47.01	ug/l	0.00
Spiked Amount				50.000		
Recovery						94.02%
35) Dibromofluoromethane	7.57	113	89483	49.04	ug/l	0.00
Spiked Amount				50.000		
Recovery						98.08%
50) Toluene-d8	10.08	98	358387	49.87	ug/l	0.00
Spiked Amount				50.000		
Recovery						99.74%
62) 4-Bromofluorobenzene	12.40	95	126142	47.77	ug/l	0.00
Spiked Amount				50.000		
Recovery						95.54%

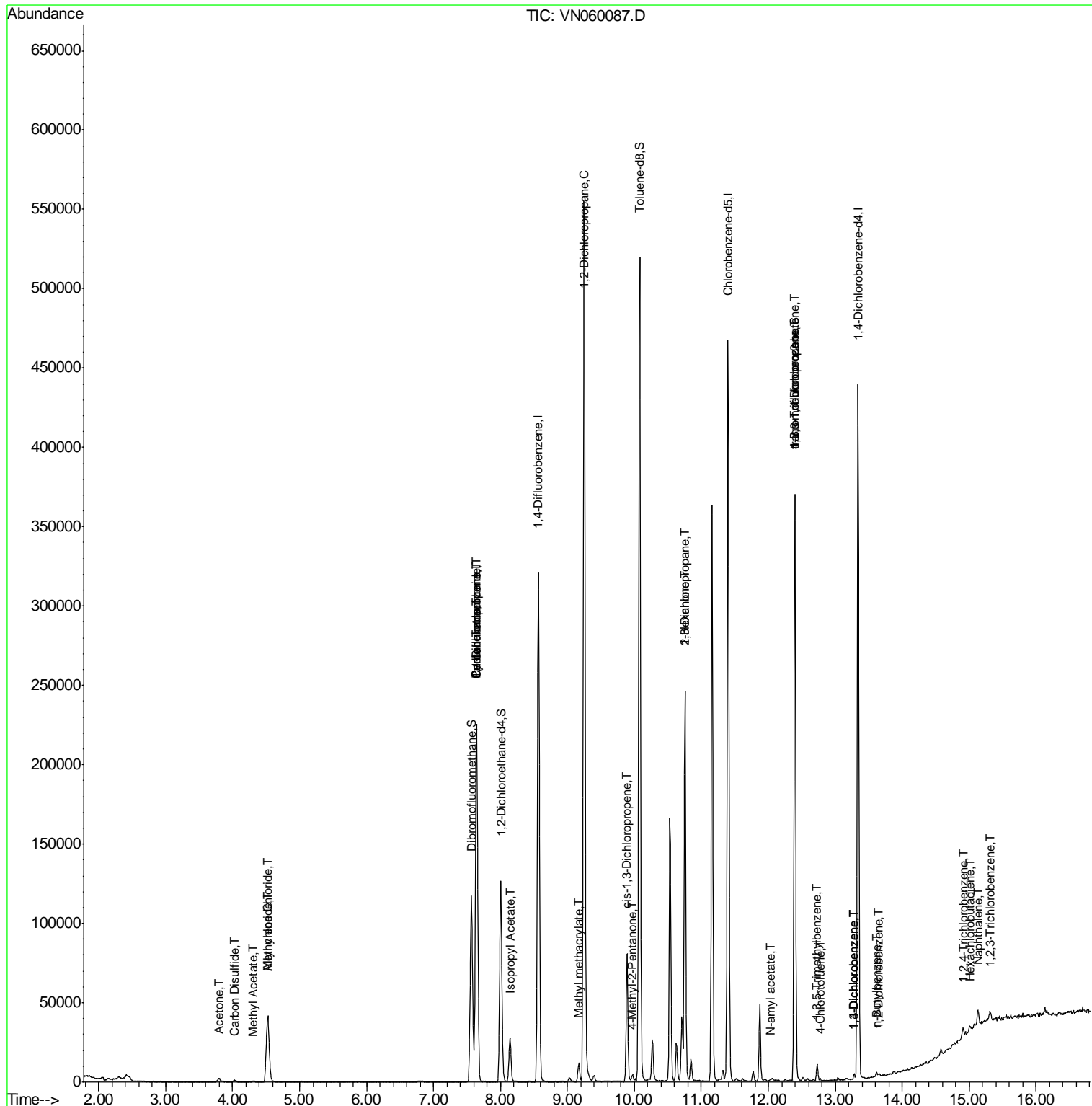
Target Compounds	R.T.	QIon	Response	Conc	Units	Qvalue
14) Allyl chloride	4.53	41	849	0.319	ug/l #	16
16) Acetone	3.79	43	4126	4.059	ug/l	90
17) Carbon Disulfide	4.03	76	1915	0.351	ug/l #	76
18) Methyl Acetate	4.30	43	920	0.482	ug/l #	50
20) Methylene Chloride	4.53	84	32761	16.153	ug/l	98
31) Cyclohexane	7.64	56	3690	1.119	ug/l #	2
36) 1,1-Dichloropropene	7.64	75	13765	5.006	ug/l #	49
38) Carbon Tetrachloride	7.64	117	18048	6.044	ug/l #	14
43) Isopropyl Acetate	8.14	43	32005	7.534	ug/l #	91
45) 1,2-Dichloropropane	9.25	63	635	0.314	ug/l #	43
48) Methyl methacrylate	9.17	41	1779	0.933	ug/l #	9
51) 4-Methyl-2-Pentanone	9.97	43	2004	0.815	ug/l #	79
54) cis-1,3-Dichloropropene	9.89	75	15024	4.357	ug/l #	65
57) 1,3-Dichloropropane	10.75	76	2743	0.815	ug/l #	43
59) 2-Hexanone	10.75	43	36847	19.400	ug/l #	53
74) N-amyl acetate	12.03	43	1091	0.339	ug/l #	43
76) 1,2,3-Trichloropropane	12.40	75	65218	28.562	ug/l #	100
80) 1,3,5-Trimethylbenzene	12.73	105	5981	0.807	ug/l	96
81) trans-1,4-Dichloro-2-buten	12.40	75	65218	69.934	ug/l #	12
82) 4-Chlorotoluene	12.77	91	1427	0.233	ug/l	84
87) 1,3-Dichlorobenzene	13.28	146	1237	0.316	ug/l	92
88) 1,4-Dichlorobenzene	13.28	146	1237	0.316	ug/l	93
89) n-Butylbenzene	13.61	91	2343	0.339	ug/l	98
91) 1,2-Dichlorobenzene	13.65	146	1087	0.284	ug/l #	77
92) 1,2-Dibromo-3-Chloropropan	14.26	75	253	Below Cal	#	1
93) 1,2,4-Trichlorobenzene	14.91	180	2046	0.909	ug/l	98
94) Hexachlorobutadiene	15.01	225	720	0.546	ug/l	94
95) Naphthalene	15.13	128	8949	1.472	ug/l	99
96) 1,2,3-Trichlorobenzene	15.32	180	2506	1.118	ug/l	90

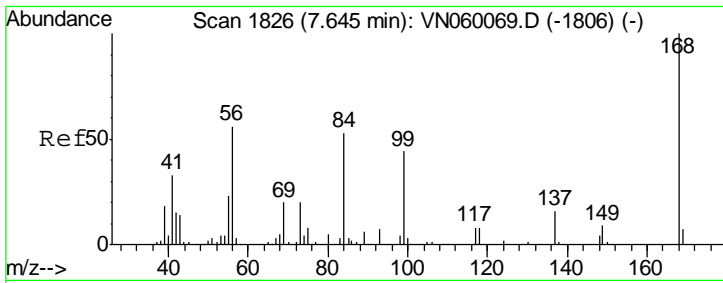
(#) = qualifier out of range (m) = manual integration (+) = signals summed

Data Path : Z:\VOASRV\HPCHEM1\MSVOA N\DATA\VN021320\
 Data File : VN060087.D
 Acq On : 13 Feb 2020 12:20
 Operator : JC/MD
 Sample : PB126782TB
 Misc : 5.00mL/MSVOA N/WATER
 ALS Vial : 7 Sample Multiplier: 1

Instrument :
 MSVOA_N
 Client Sampled :

Quant Time: Feb 14 04:55:14 2020
 Quant Method : Z:\VOASRV\HPCHEM1\MSVOA_N\METHODS\82N021220W.M
 Quant Title : SW846 8260
 QLast Update : Wed Feb 12 14:12:21 2020
 Response via : Initial Calibration

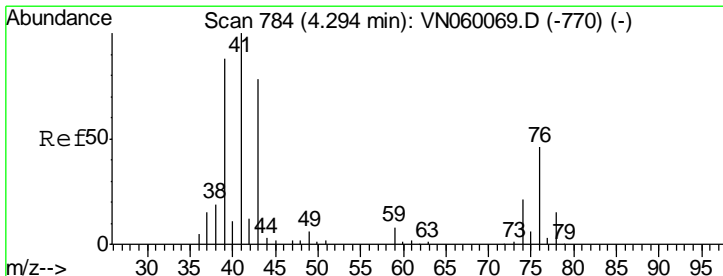
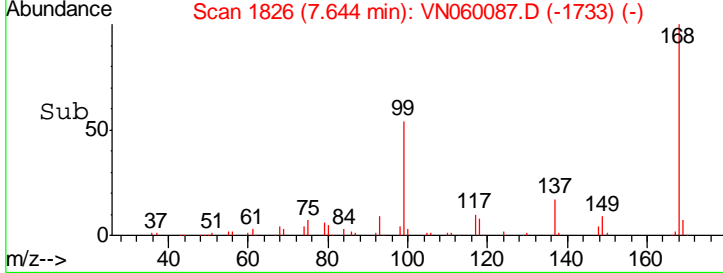
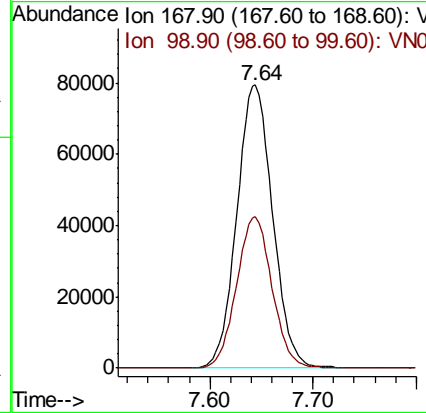
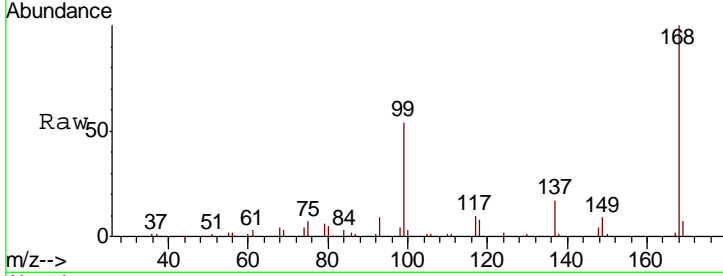




#1
 Pentafluorobenzene
 Concen: 50.000 ug/l
 RT: 7.64 min Scan# 1826
 Delta R.T. -0.00 min
 Lab File: VN060087.D
 Acq: 13 Feb 2020 12:20

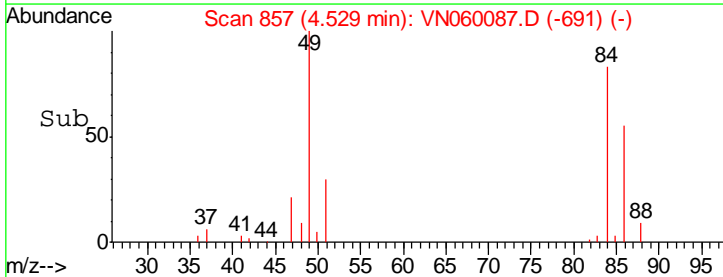
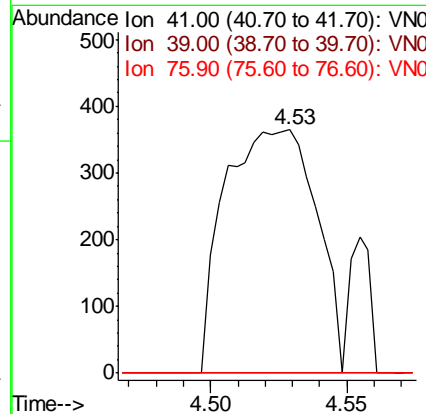
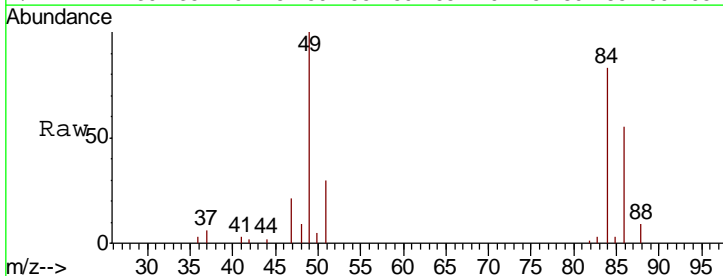
Instrument :
 MSVOA_N
 ClientSampled :

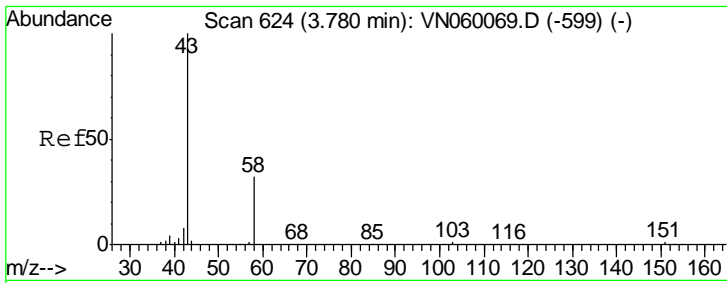
Tgt Ion	Resp	Lower	Upper
168	100		
99	53.5	42.7	64.1



#14
 Allyl chloride
 Concen: 0.319 ug/l
 RT: 4.53 min Scan# 857
 Delta R.T. 0.23 min
 Lab File: VN060087.D
 Acq: 13 Feb 2020 12:20

Tgt Ion	Resp	Lower	Upper
41	100		
39	0.0	67.8	101.8#
76	0.0	33.9	50.9#

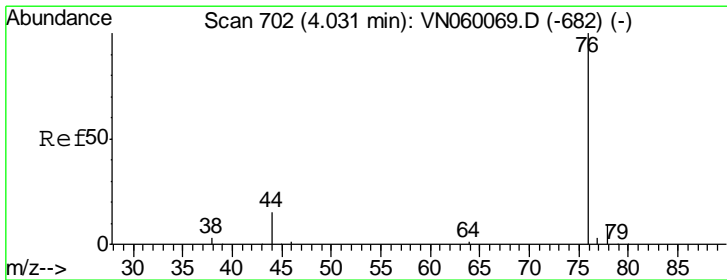
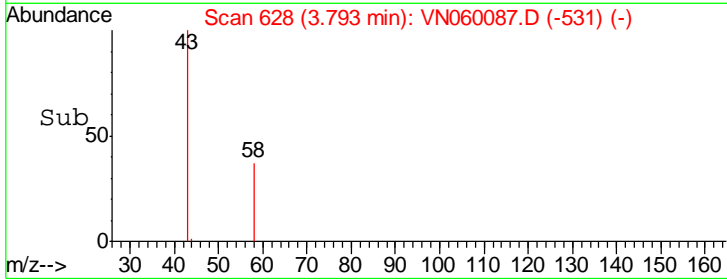
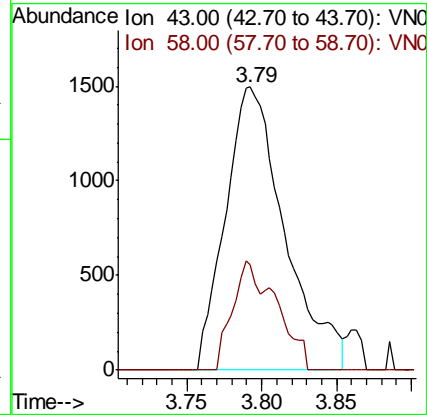
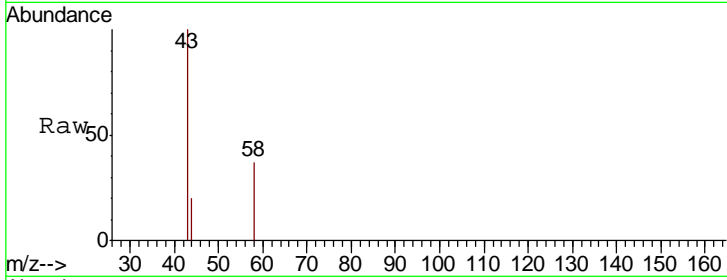




#16
 Acetone
 Concen: 4.059 ug/l
 RT: 3.79 min Scan# 628
 Delta R.T. 0.01 min
 Lab File: VN060087.D
 Acq: 13 Feb 2020 12:20

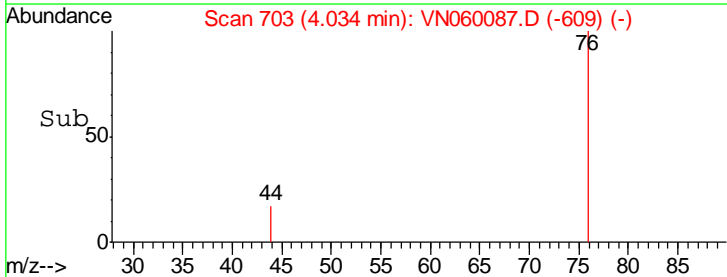
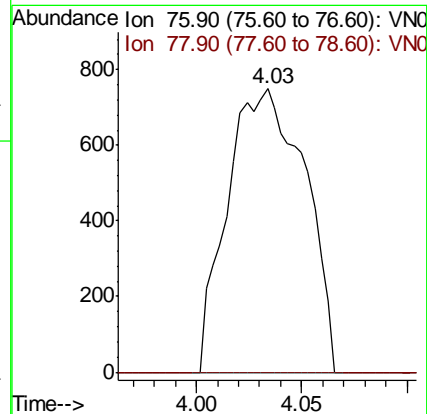
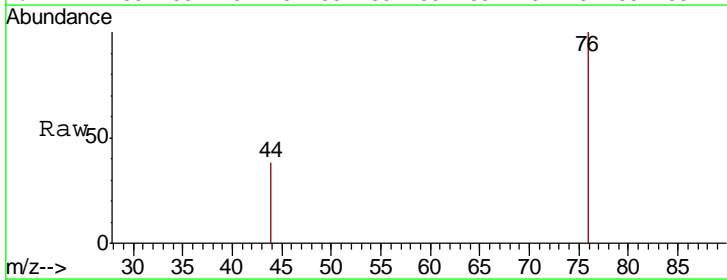
Instrument :
 MSVOA_N
 ClientSampled :

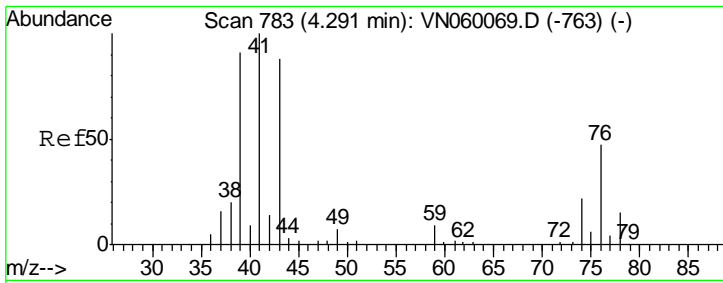
Tgt Ion	Resp	Lower	Upper
43	100		
58	37.1	25.2	37.8



#17
 Carbon Disulfide
 Concen: 0.351 ug/l
 RT: 4.03 min Scan# 703
 Delta R.T. 0.00 min
 Lab File: VN060087.D
 Acq: 13 Feb 2020 12:20

Tgt Ion	Resp	Lower	Upper
76	100		
78	0.0	7.0	10.6#

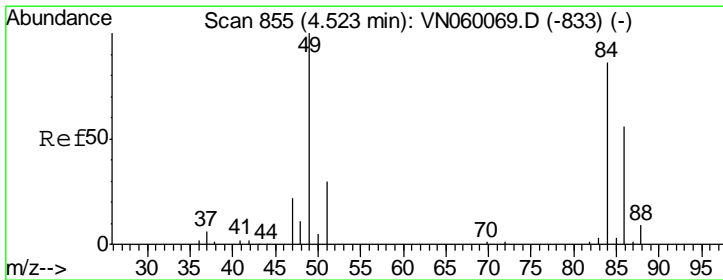
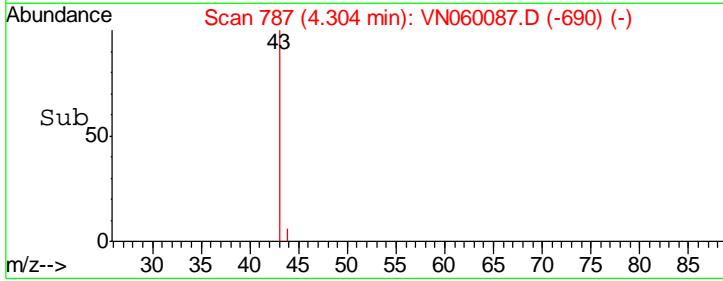
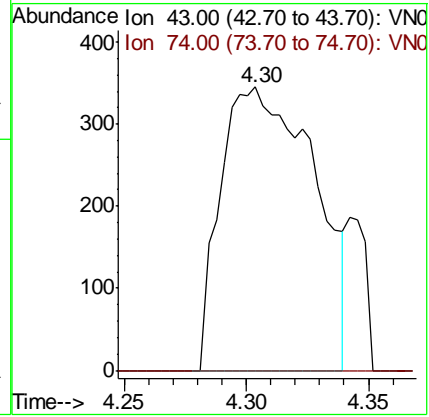
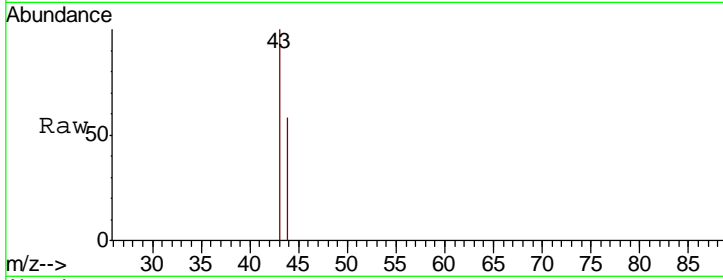




#18
 Methyl Acetate
 Concen: 0.482 ug/l
 RT: 4.30 min Scan# 787
 Delta R.T. 0.01 min
 Lab File: VN060087.D
 Acq: 13 Feb 2020 12:20

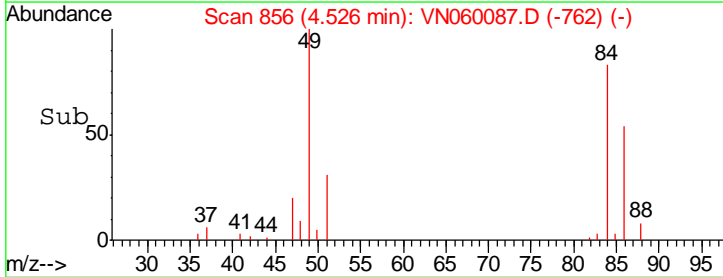
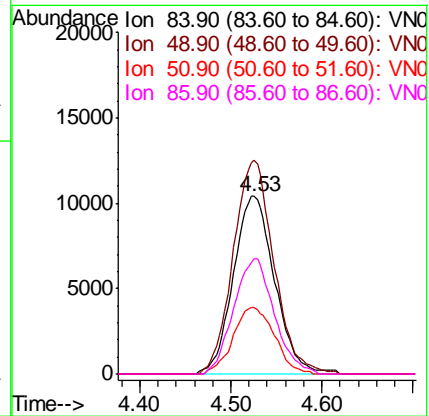
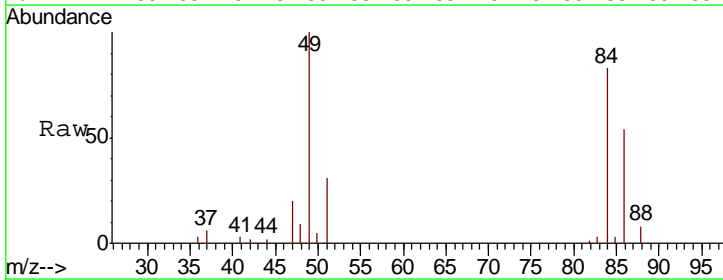
Instrument :
 MSVOA_N
 ClientSampled :

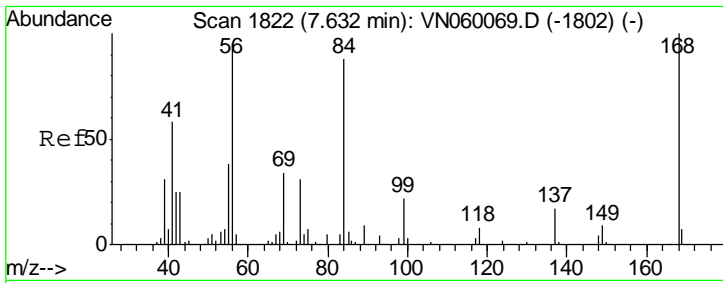
Tgt Ion	Resp	Lower	Upper
43	100		
74	0.0	20.3	30.5#



#20
 Methylene Chloride
 Concen: 16.153 ug/l
 RT: 4.53 min Scan# 856
 Delta R.T. 0.00 min
 Lab File: VN060087.D
 Acq: 13 Feb 2020 12:20

Tgt Ion	Resp	Lower	Upper
84	100		
49	120.1	93.4	140.0
51	37.2	28.4	42.6
86	64.8	52.5	78.7

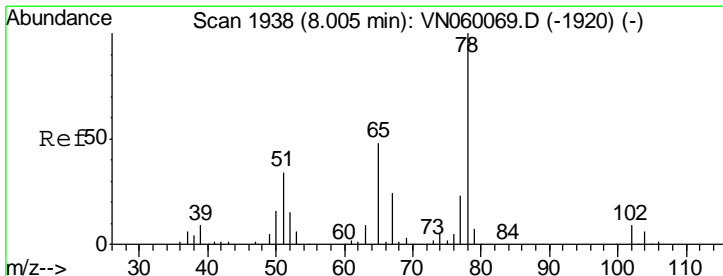
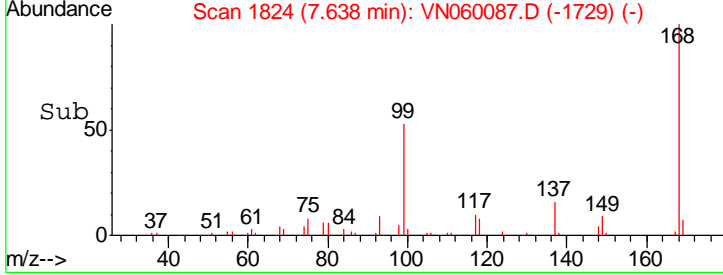
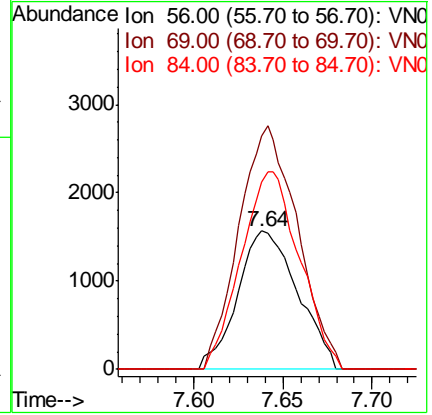
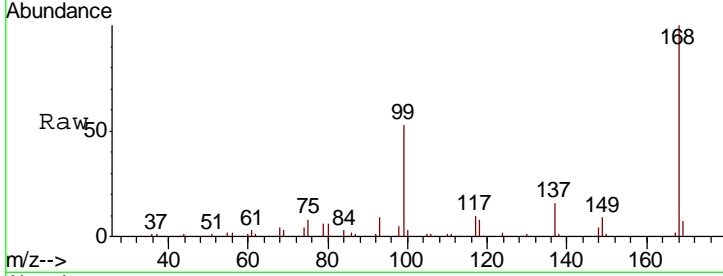




#31
 Cyclohexane
 Concen: 1.119 ug/l
 RT: 7.64 min Scan# 1824
 Delta R.T. 0.01 min
 Lab File: VN060087.D
 Acq: 13 Feb 2020 12:20

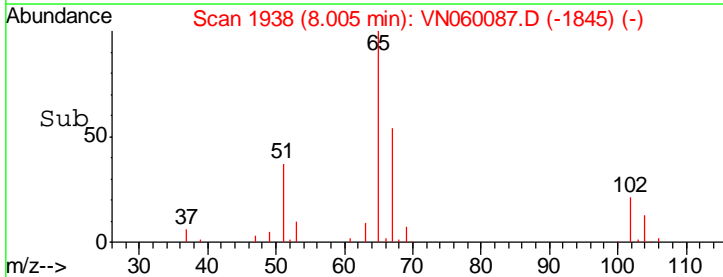
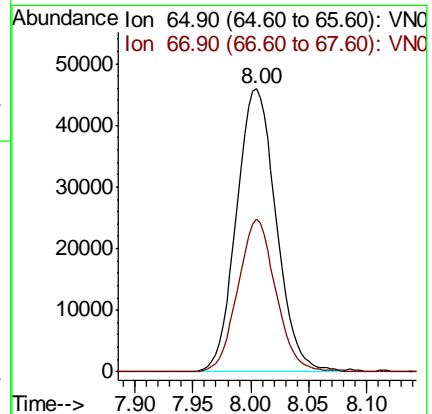
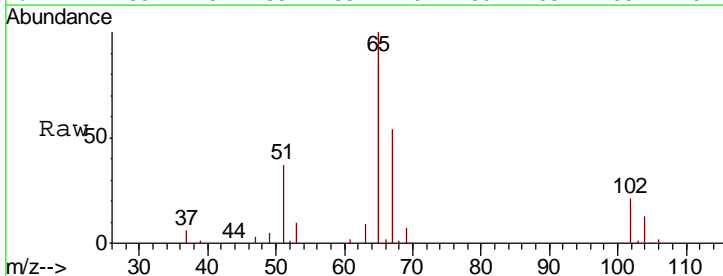
Instrument :
 MSVOA_N
 ClientSampled :

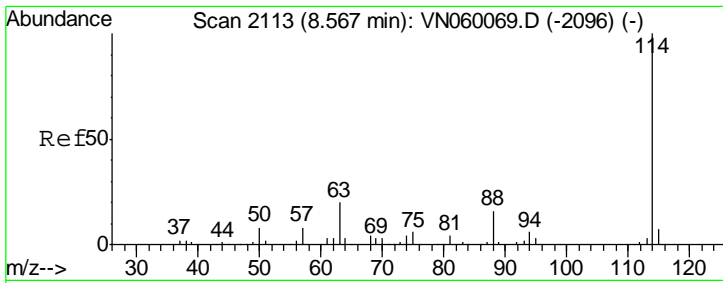
Tgt Ion	Resp	Lower	Upper
56	100		
69	168.6	28.3	42.5#
84	135.1	72.6	108.8#



#33
 1,2-Dichloroethane-d4
 Concen: 47.009 ug/l
 RT: 8.00 min Scan# 1938
 Delta R.T. -0.00 min
 Lab File: VN060087.D
 Acq: 13 Feb 2020 12:20

Tgt Ion	Resp	Lower	Upper
65	100		
67	51.5	0.0	104.0

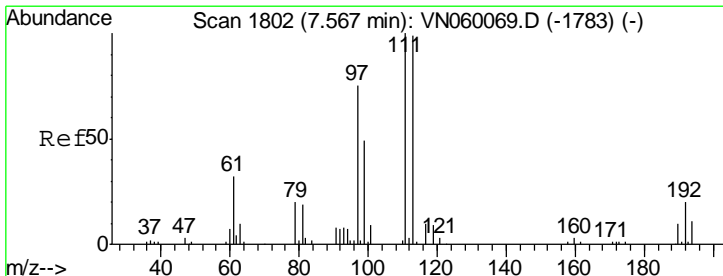
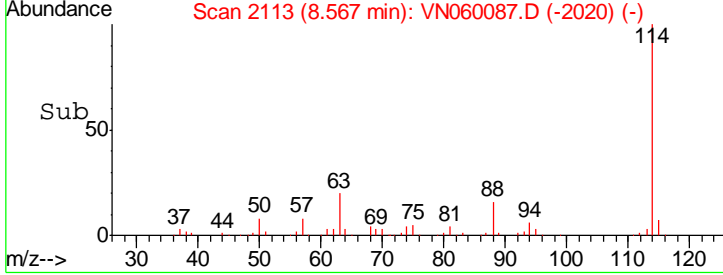
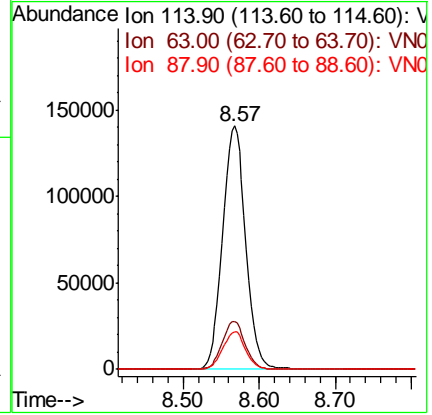
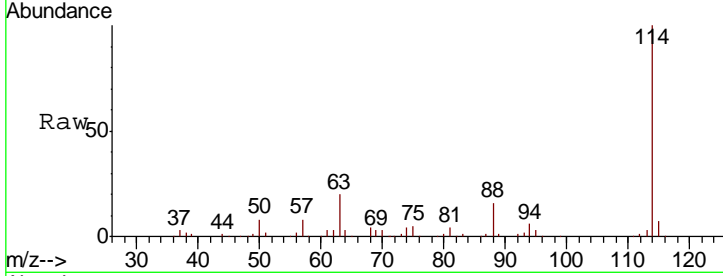




#34
 1,4-Difluorobenzene
 Concen: 50.000 ug/l
 RT: 8.57 min Scan# 2113
 Delta R.T. -0.00 min
 Lab File: VN060087.D
 Acq: 13 Feb 2020 12:20

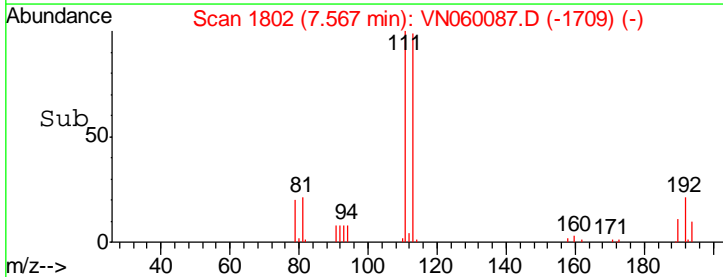
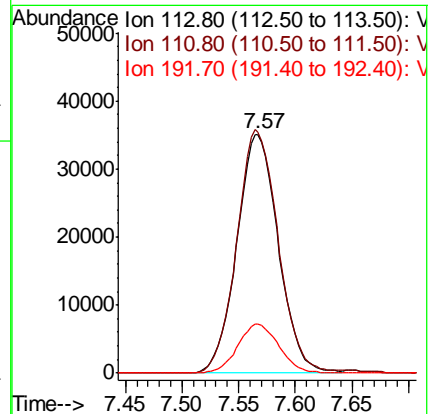
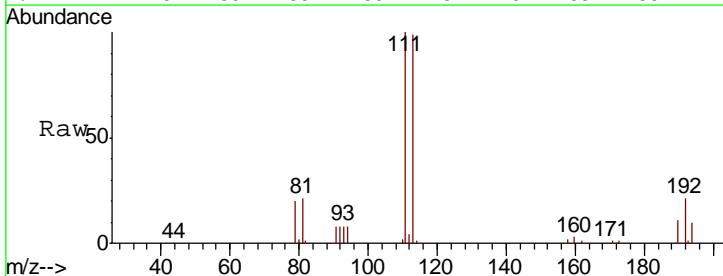
Instrument :
 MSVOA_N
 ClientSampled :

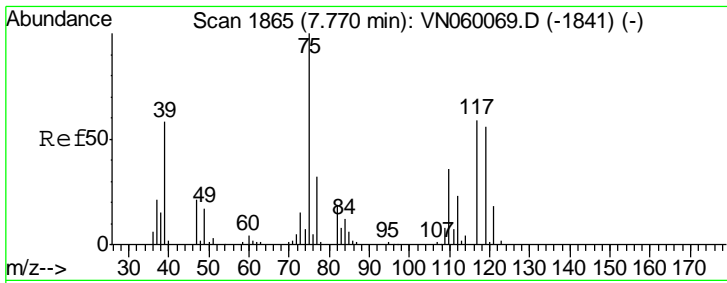
Tgt Ion	Resp	Lower	Upper
114	296859		
63	19.6	0.0	40.0
88	15.6	0.0	31.6



#35
 Dibromofluoromethane
 Concen: 49.037 ug/l
 RT: 7.57 min Scan# 1802
 Delta R.T. -0.00 min
 Lab File: VN060087.D
 Acq: 13 Feb 2020 12:20

Tgt Ion	Resp	Lower	Upper
113	89483		
111	101.9	81.4	122.2
192	20.4	16.2	24.2

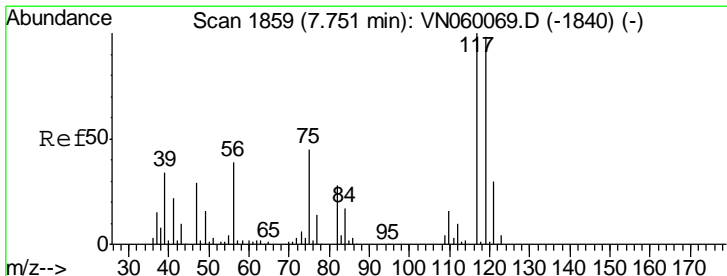
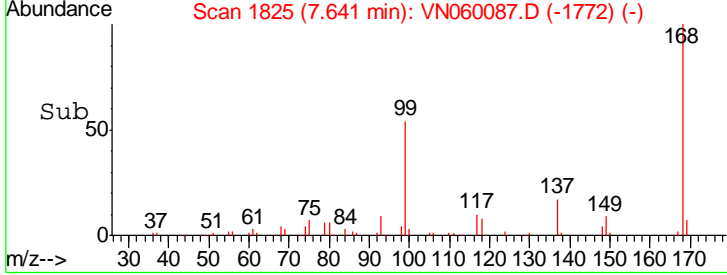
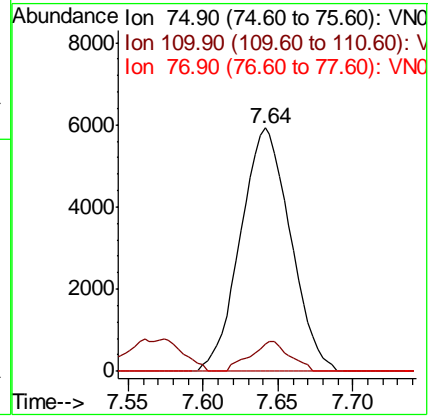
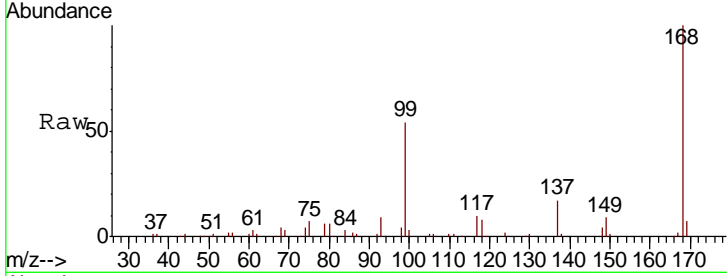




#36
 1,1-Dichloropropene
 Concen: 5.006 ug/l
 RT: 7.64 min Scan# 1825
 Delta R.T. -0.13 min
 Lab File: VN060087.D
 Acq: 13 Feb 2020 12:20

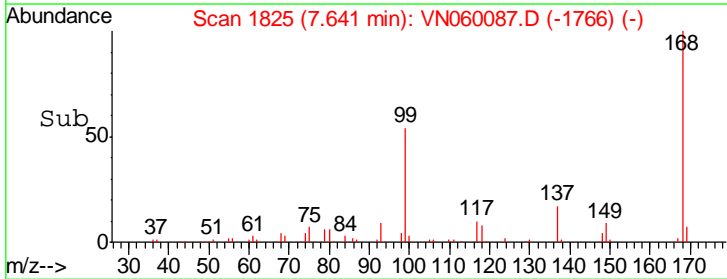
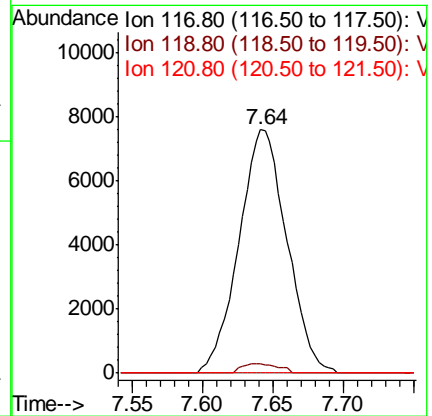
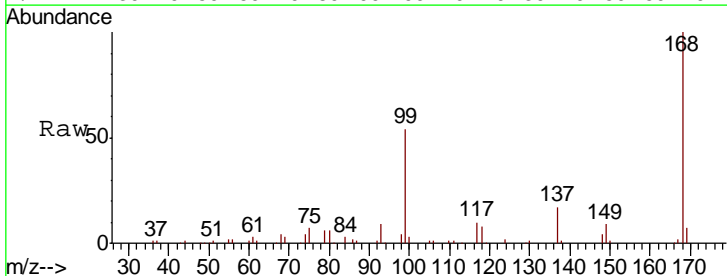
Instrument :
 MSVOA_N
 ClientSampled :

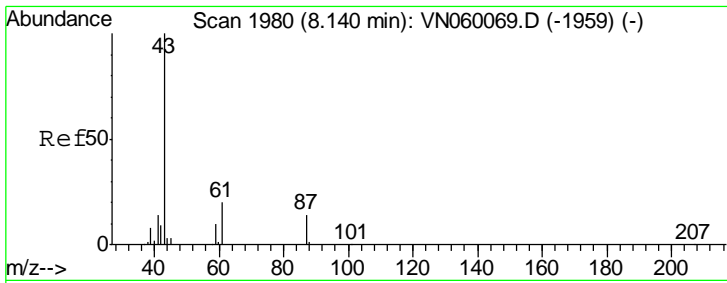
Tgt Ion	Resp	Lower	Upper
75	13765		
110	9.5	18.1	54.3#
77	0.0	25.1	37.7#



#38
 Carbon Tetrachloride
 Concen: 6.044 ug/l
 RT: 7.64 min Scan# 1825
 Delta R.T. -0.11 min
 Lab File: VN060087.D
 Acq: 13 Feb 2020 12:20

Tgt Ion	Resp	Lower	Upper
117	18048		
119	3.6	78.2	117.4#
121	0.0	24.2	36.2#

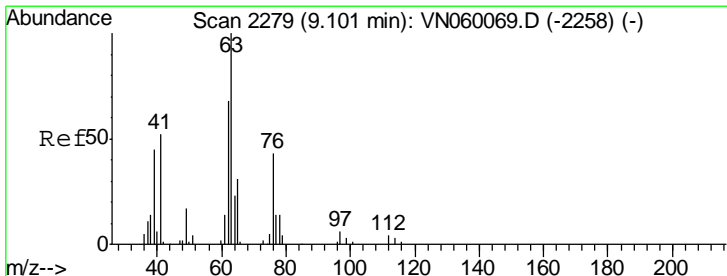
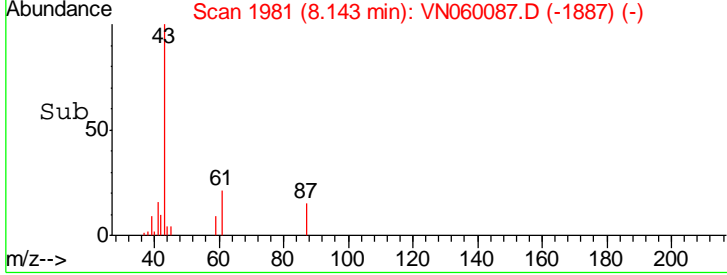
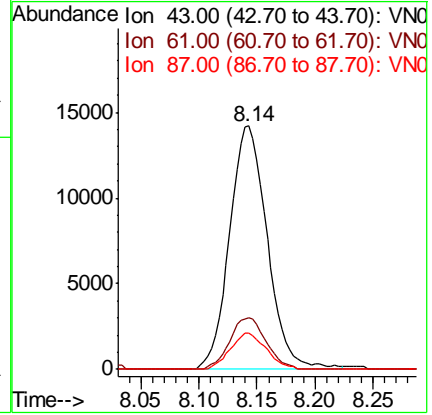
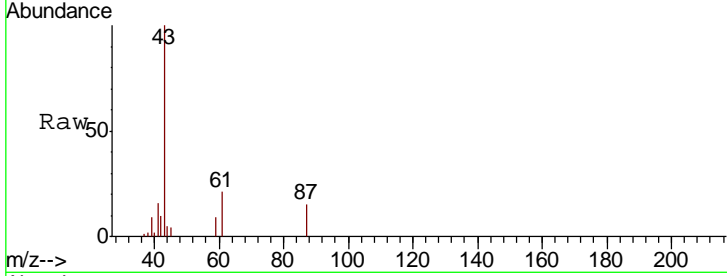




#43
 Isopropyl Acetate
 Concen: 7.534 ug/l
 RT: 8.14 min Scan# 1981
 Delta R.T. 0.00 min
 Lab File: VN060087.D
 Acq: 13 Feb 2020 12:20

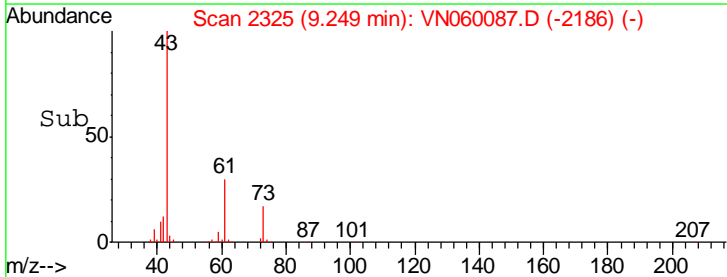
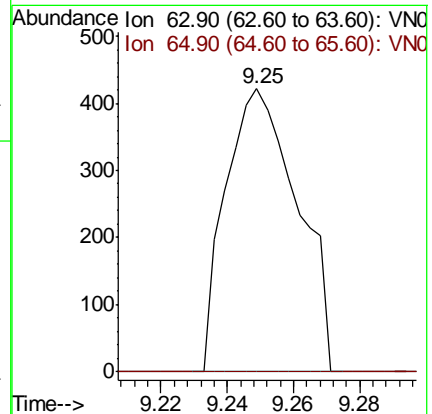
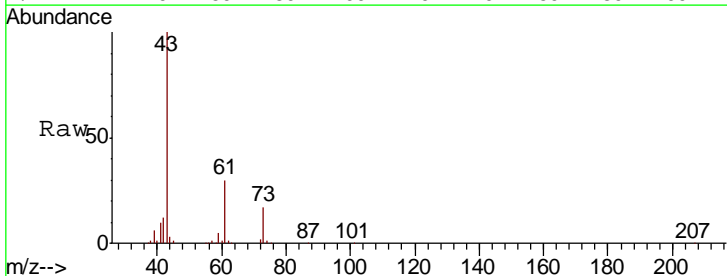
Instrument :
 MSVOA_N
 ClientSampled :

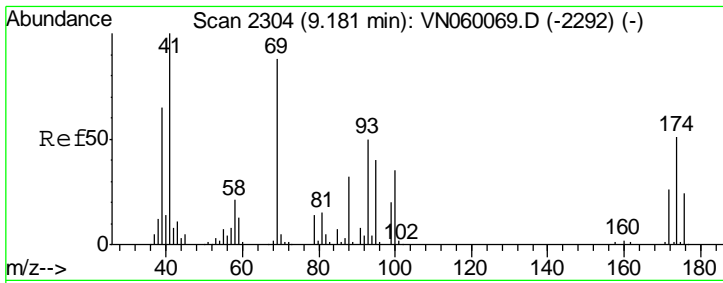
Tgt Ion	Resp	Lower	Upper
43	100		
61	20.3	21.8	32.6#
87	14.2	11.4	17.2



#45
 1,2-Dichloropropane
 Concen: 0.314 ug/l
 RT: 9.25 min Scan# 2325
 Delta R.T. 0.15 min
 Lab File: VN060087.D
 Acq: 13 Feb 2020 12:20

Tgt Ion	Resp	Lower	Upper
63	100		
65	0.0	25.0	37.4#

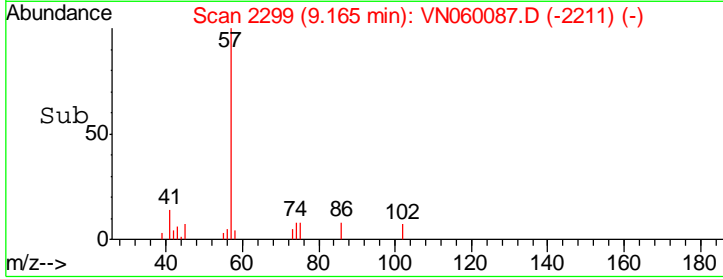
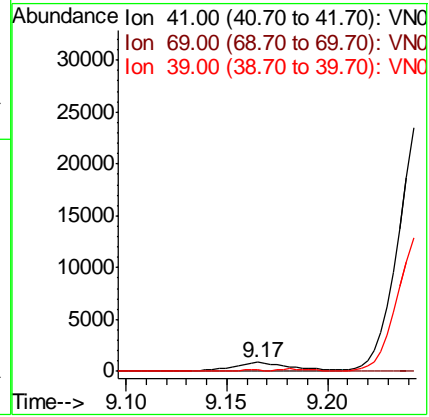
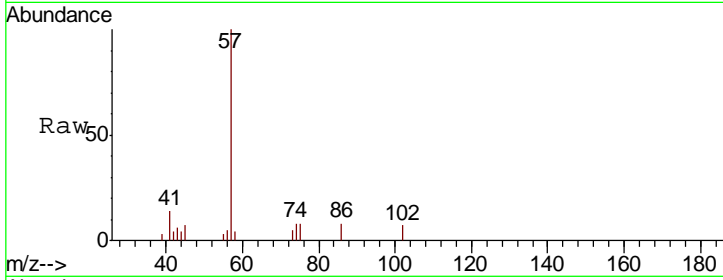




#48
 Methyl methacrylate
 Concen: 0.933 ug/l
 RT: 9.17 min Scan# 2299
 Delta R.T. -0.02 min
 Lab File: VN060087.D
 Acq: 13 Feb 2020 12:20

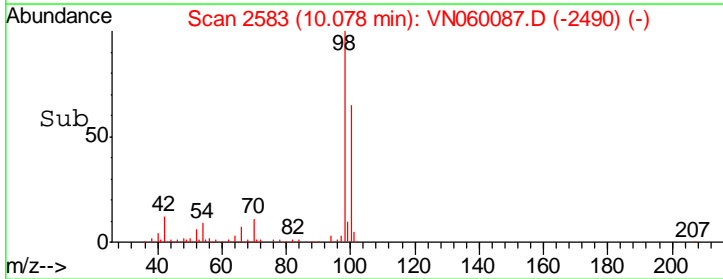
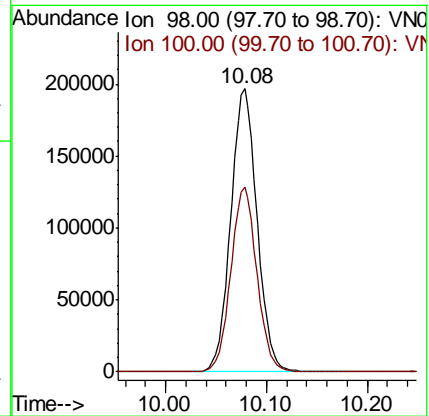
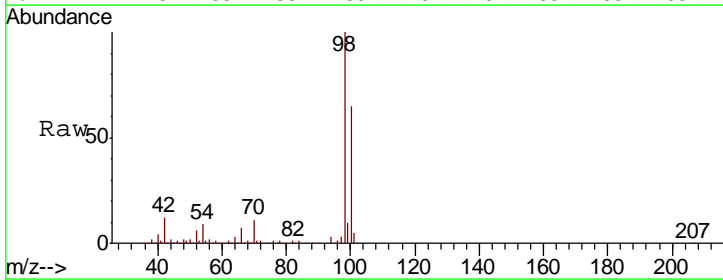
Instrument :
 MSVOA_N
 ClientSampled :

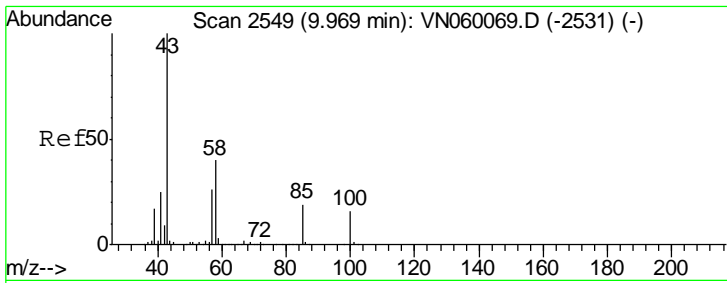
Tgt Ion	Resp	Lower	Upper
41	1779		
69	0.0	72.0	108.0#
39	0.0	54.1	81.1#



#50
 Toluene-d8
 Concen: 49.873 ug/l
 RT: 10.08 min Scan# 2583
 Delta R.T. -0.00 min
 Lab File: VN060087.D
 Acq: 13 Feb 2020 12:20

Tgt Ion	Resp	Lower	Upper
98	358387		
100	64.5	51.7	77.5

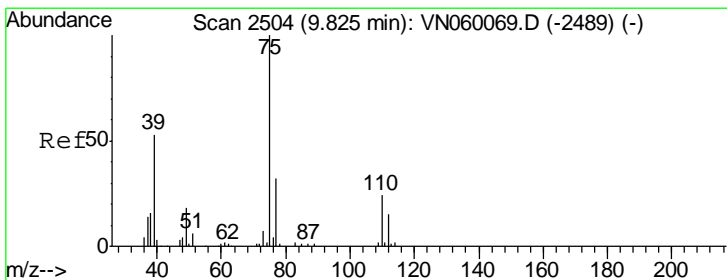
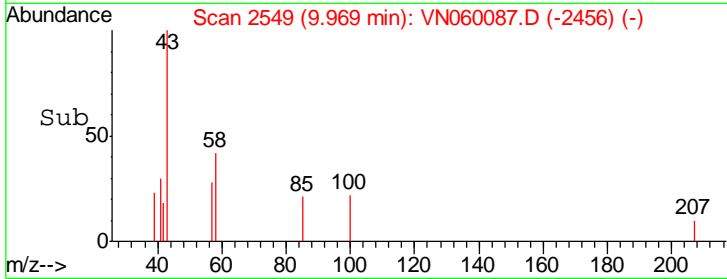
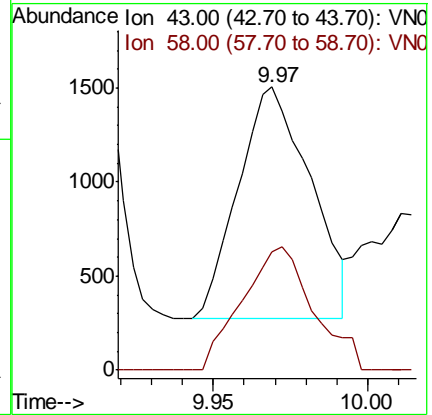
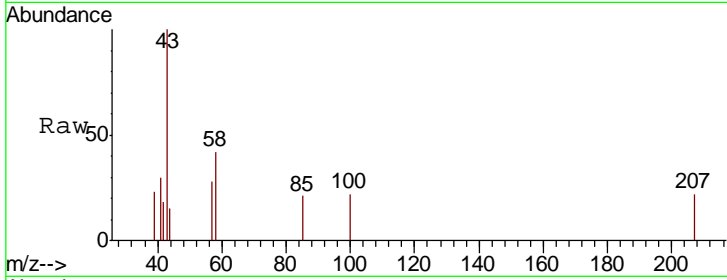




#51
 4-Methyl-2-Pentanone
 Concen: 0.815 ug/l
 RT: 9.97 min Scan# 2549
 Delta R.T. -0.00 min
 Lab File: VN060087.D
 Acq: 13 Feb 2020 12:20

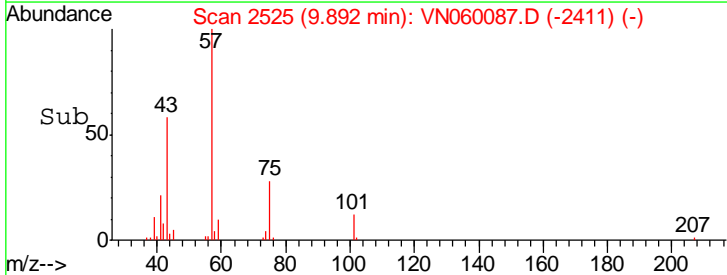
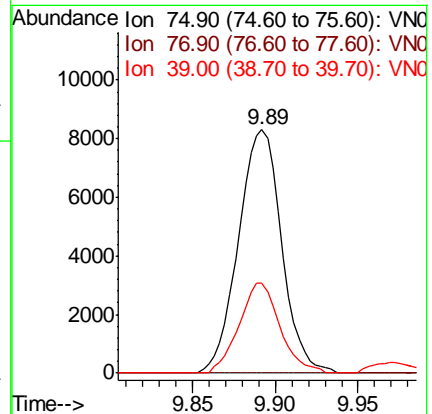
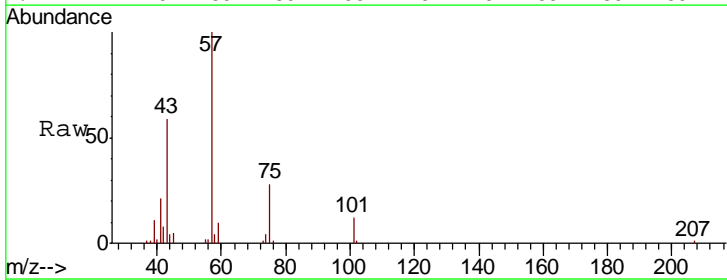
Instrument :
 MSVOA_N
 ClientSampled :

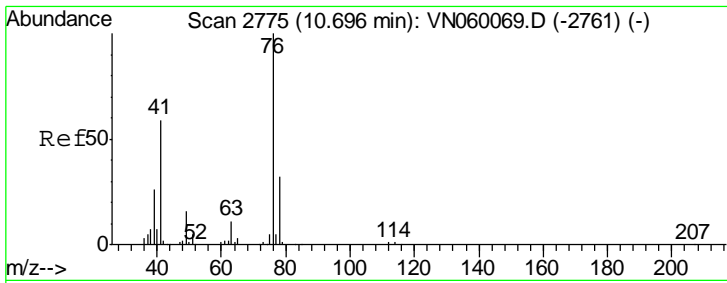
Tgt Ion	Resp	Lower	Upper
43	100		
58	52.4	31.8	47.8#



#54
 cis-1,3-Dichloropropene
 Concen: 4.357 ug/l
 RT: 9.89 min Scan# 2525
 Delta R.T. 0.07 min
 Lab File: VN060087.D
 Acq: 13 Feb 2020 12:20

Tgt Ion	Resp	Lower	Upper
75	100		
77	0.0	25.6	38.4#
39	37.1	42.2	63.4#

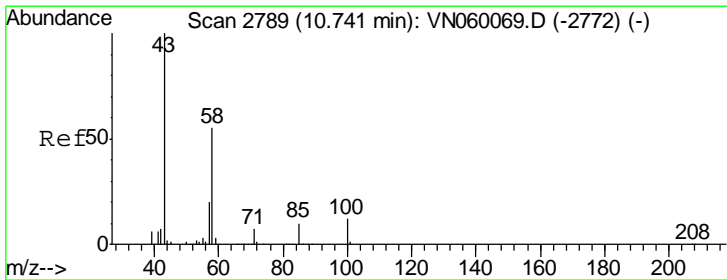
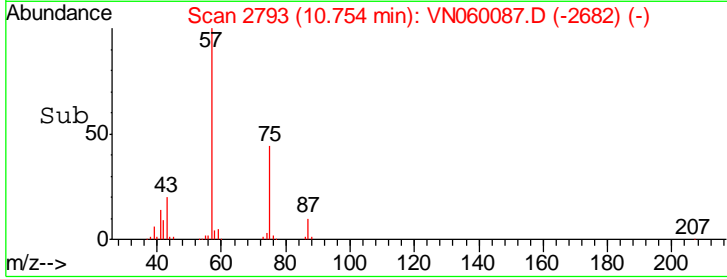
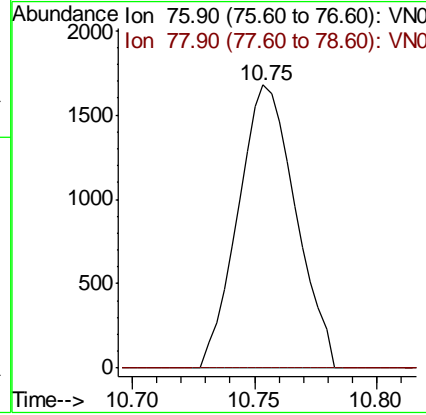
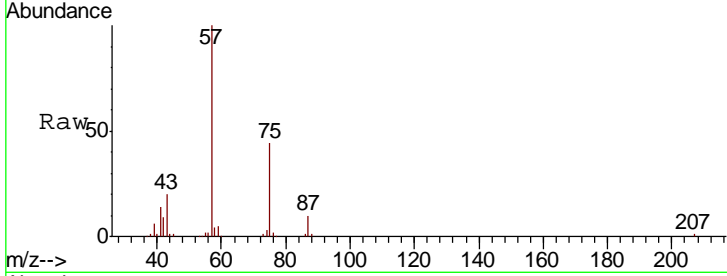




#57
 1,3-Dichloropropane
 Concen: 0.815 ug/l
 RT: 10.75 min Scan# 2793
 Delta R.T. 0.06 min
 Lab File: VN060087.D
 Acq: 13 Feb 2020 12:20

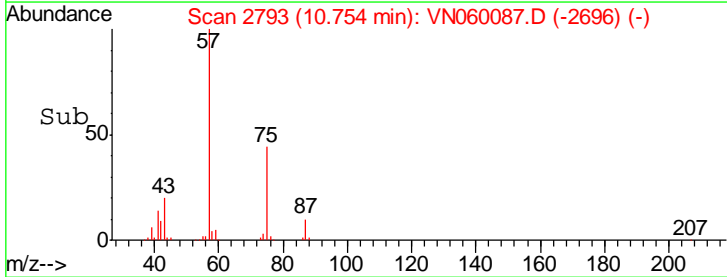
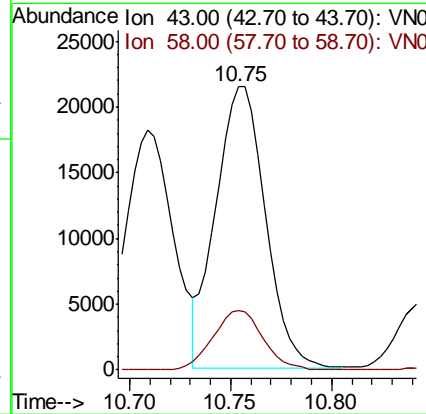
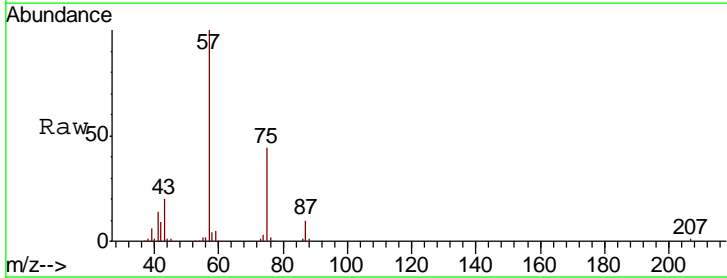
Instrument :
 MSVOA_N
 ClientSampled :

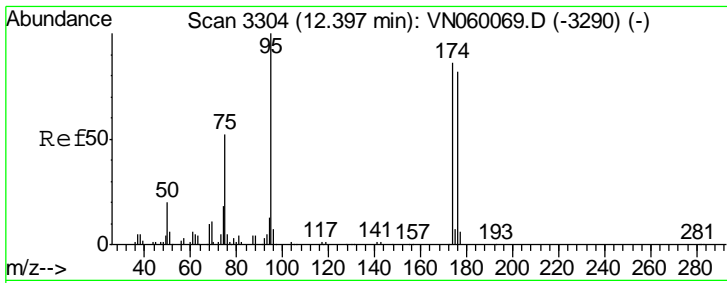
Tgt Ion: 76 Resp: 2743
 Ion Ratio Lower Upper
 76 100
 78 0.0 25.7 38.5#



#59
 2-Hexanone
 Concen: 19.400 ug/l
 RT: 10.75 min Scan# 2793
 Delta R.T. 0.01 min
 Lab File: VN060087.D
 Acq: 13 Feb 2020 12:20

Tgt Ion: 43 Resp: 36847
 Ion Ratio Lower Upper
 43 100
 58 21.0 27.5 82.4#

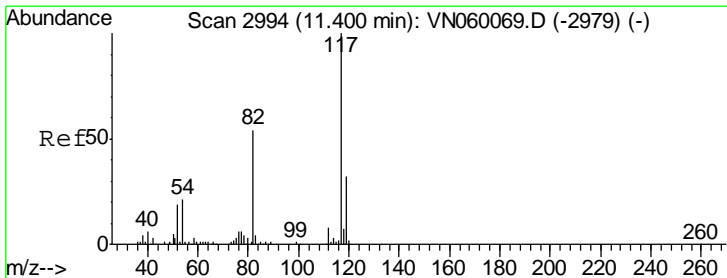
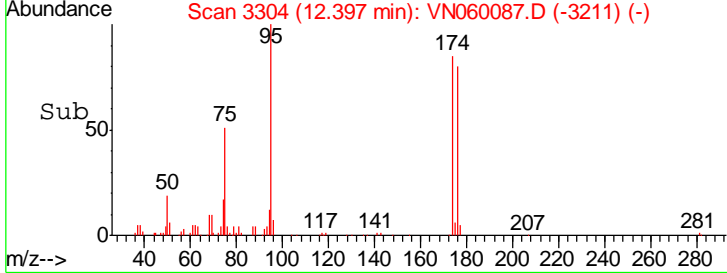
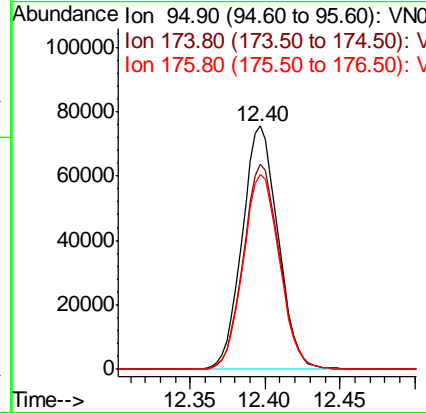
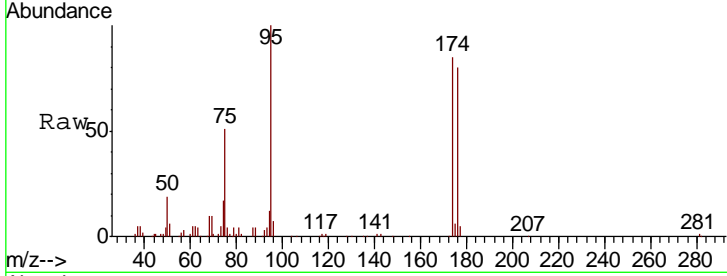




#62
 4-Bromofluorobenzene
 Concen: 47.772 ug/l
 RT: 12.40 min Scan# 3304
 Delta R.T. -0.00 min
 Lab File: VN060087.D
 Acq: 13 Feb 2020 12:20

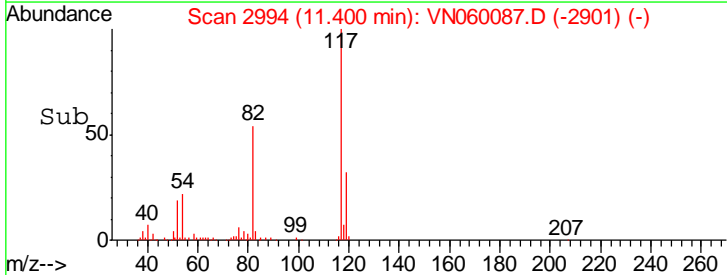
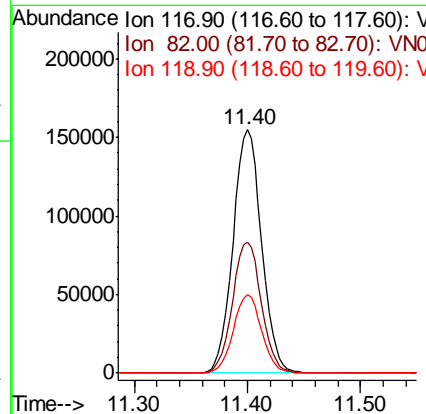
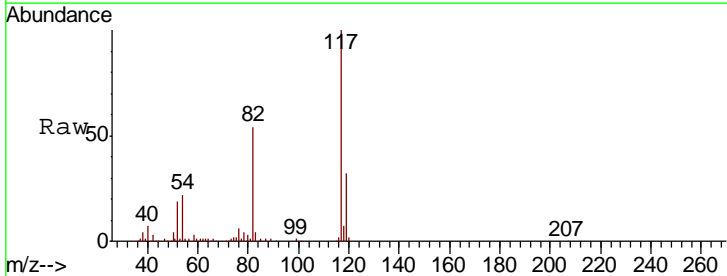
Instrument :
 MSVOA_N
 ClientSampled :

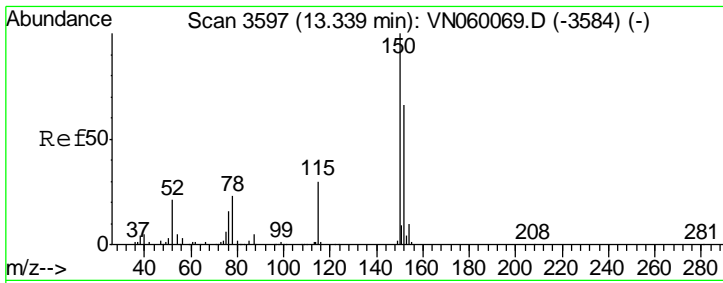
Tgt Ion	Resp	Lower	Upper
95	126142		
174	85.2	0.0	169.8
176	81.4	0.0	164.8



#63
 Chlorobenzene-d5
 Concen: 50.000 ug/l
 RT: 11.40 min Scan# 2994
 Delta R.T. -0.00 min
 Lab File: VN060087.D
 Acq: 13 Feb 2020 12:20

Tgt Ion	Resp	Lower	Upper
117	272472		
82	53.9	43.4	65.0
119	32.0	25.8	38.6

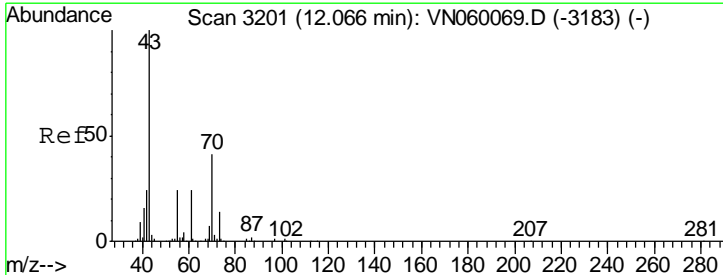
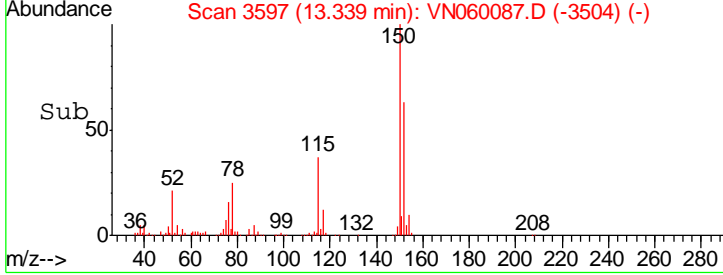
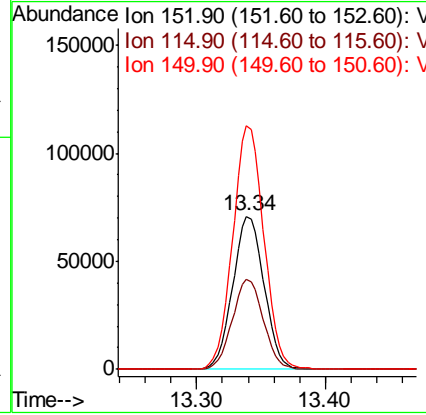
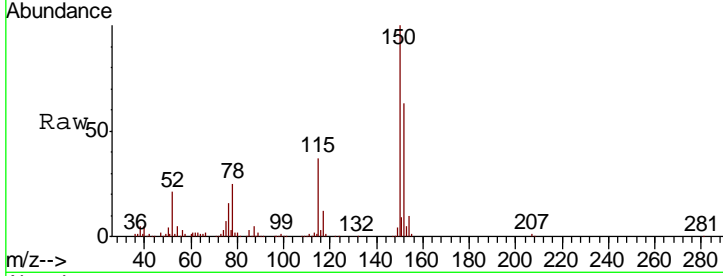




#72
 1,4-Dichlorobenzene-d4
 Concen: 50.000 ug/l
 RT: 13.34 min Scan# 3597
 Delta R.T. -0.00 min
 Lab File: VN060087.D
 Acq: 13 Feb 2020 12:20

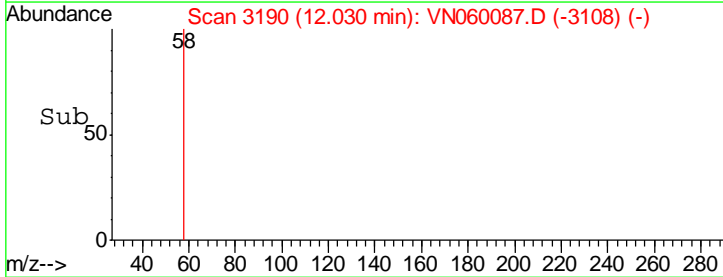
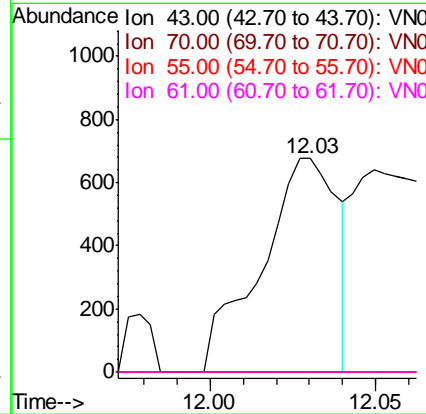
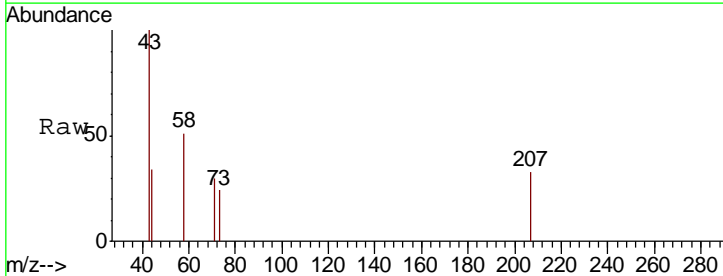
Instrument : MSVOA_N
 ClientSampled :

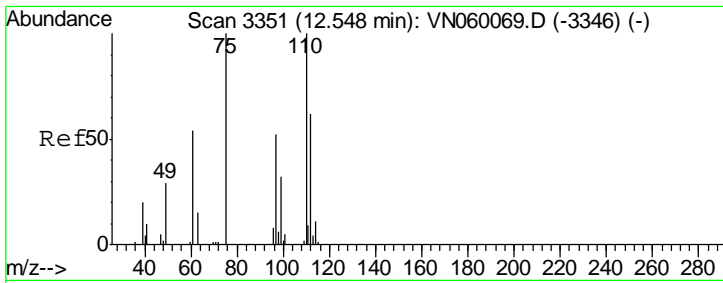
Tgt Ion	Resp	Lower	Upper
152	100		
115	58.5	28.9	86.8
150	157.7	0.0	342.4



#74
 N-nyl acetate
 Concen: 0.339 ug/l
 RT: 12.03 min Scan# 3190
 Delta R.T. -0.04 min
 Lab File: VN060087.D
 Acq: 13 Feb 2020 12:20

Tgt Ion	Resp	Lower	Upper
43	100		
70	0.0	33.4	50.0#
55	0.0	18.8	28.2#
61	0.0	19.2	28.8#

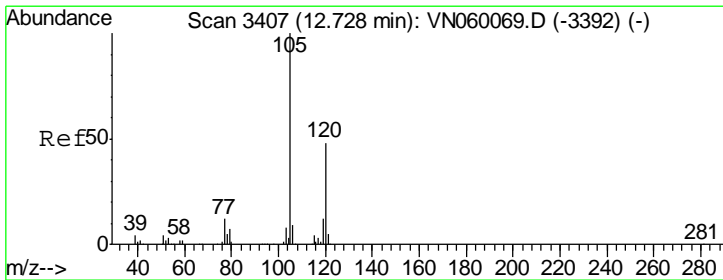
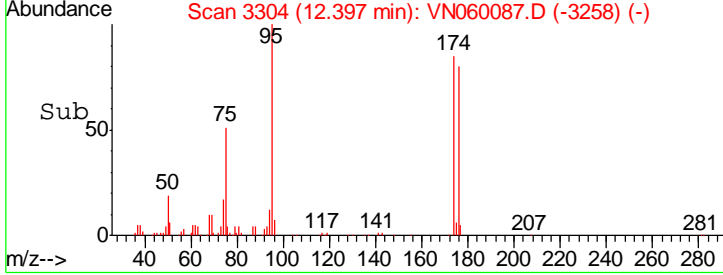
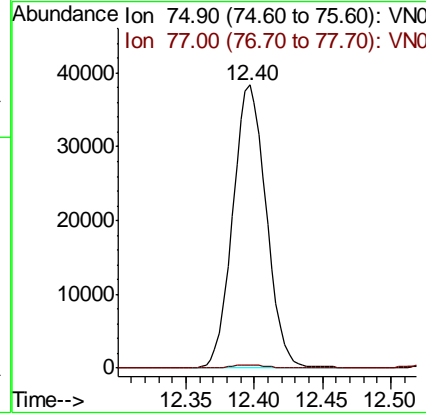
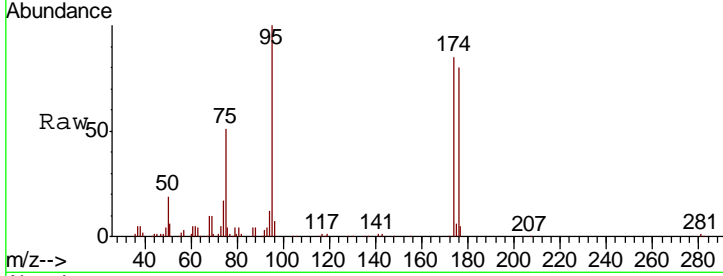




#76
 1,2,3-Trichloropropane
 Concen: 28.562 ug/l
 RT: 12.40 min Scan# 3304
 Delta R.T. -0.15 min
 Lab File: VN060087.D
 Acq: 13 Feb 2020 12:20

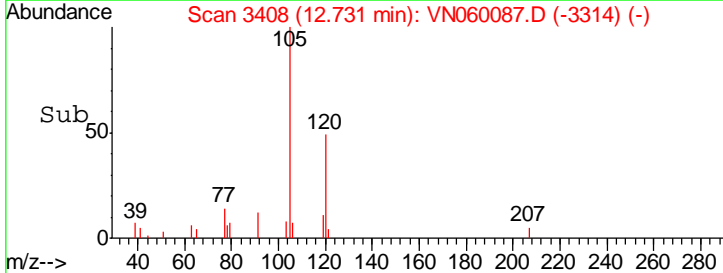
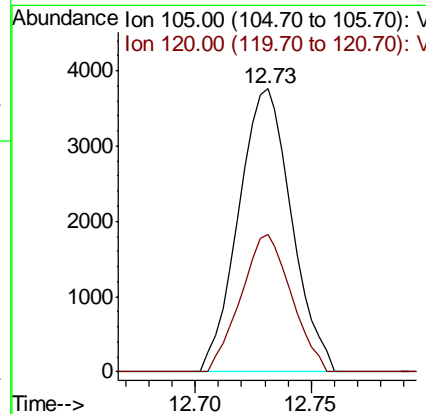
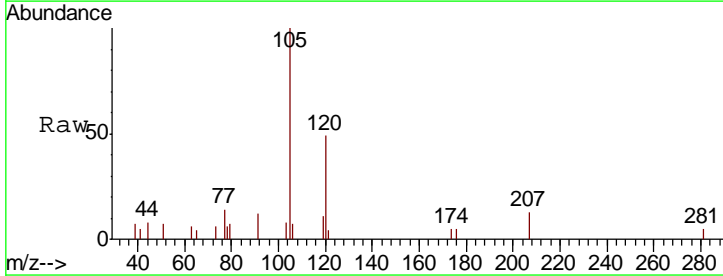
Instrument : MSVOA_N
 ClientSampled :

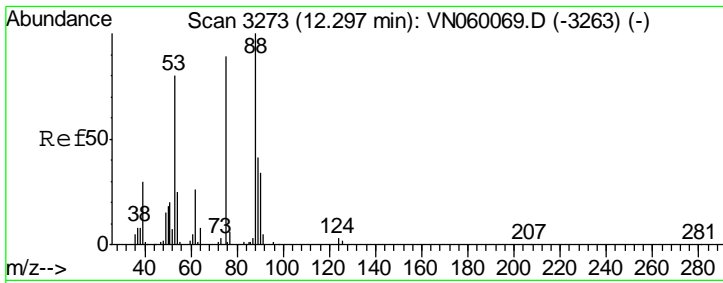
Tgt Ion: 75 Resp: 65218
 Ion Ratio Lower Upper
 75 100
 77 1.1 0.0 0.0#



#80
 1,3,5-Trimethylbenzene
 Concen: 0.807 ug/l
 RT: 12.73 min Scan# 3408
 Delta R.T. 0.00 min
 Lab File: VN060087.D
 Acq: 13 Feb 2020 12:20

Tgt Ion: 105 Resp: 5981
 Ion Ratio Lower Upper
 105 100
 120 46.2 24.3 72.9

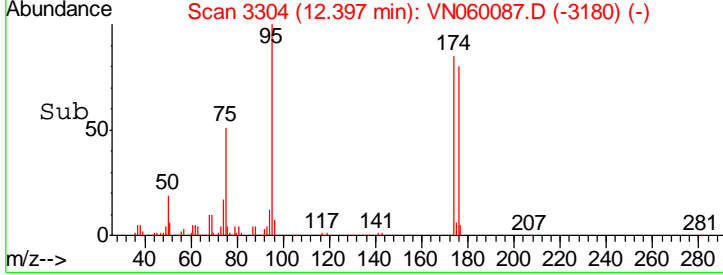
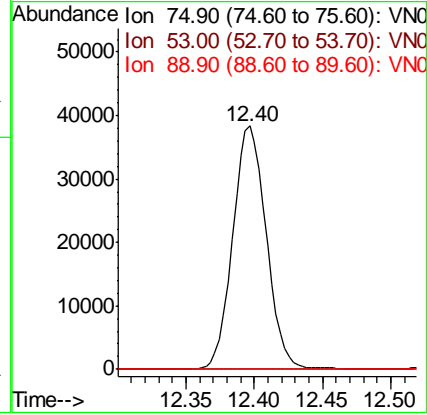
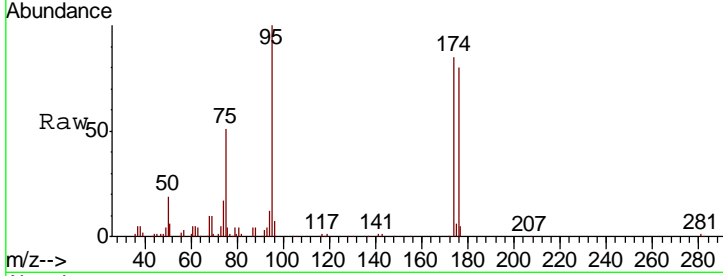




#81
 trans-1,4-Dichloro-2-butene
 Concen: 69.934 ug/l
 RT: 12.40 min Scan# 3304
 Delta R.T. 0.10 min
 Lab File: VN060087.D
 Acq: 13 Feb 2020 12:20

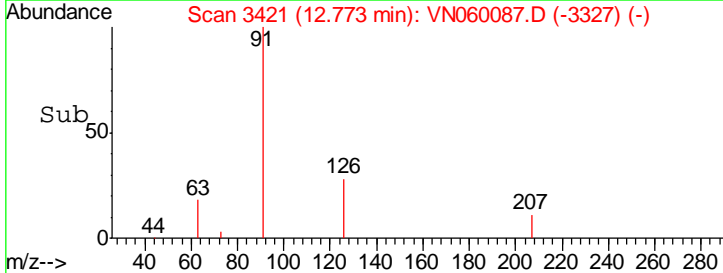
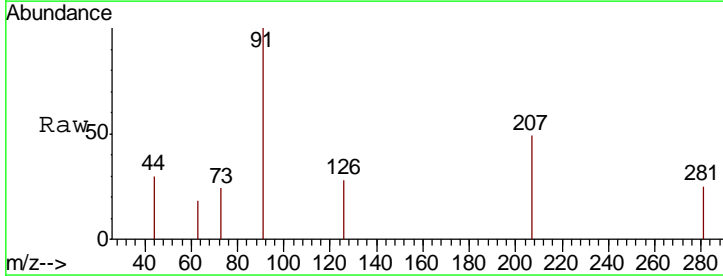
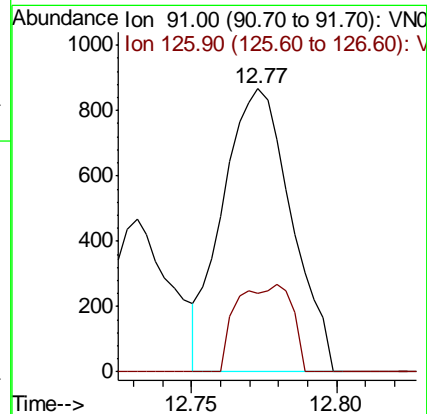
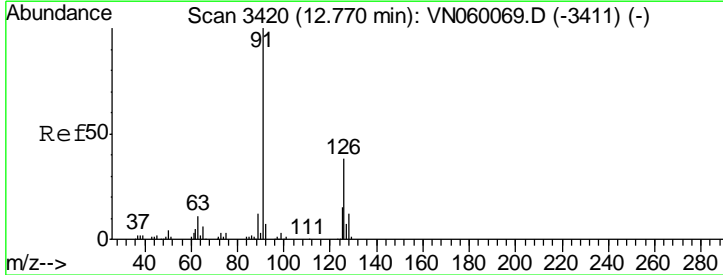
Instrument : MSVOA_N
 ClientSampled :

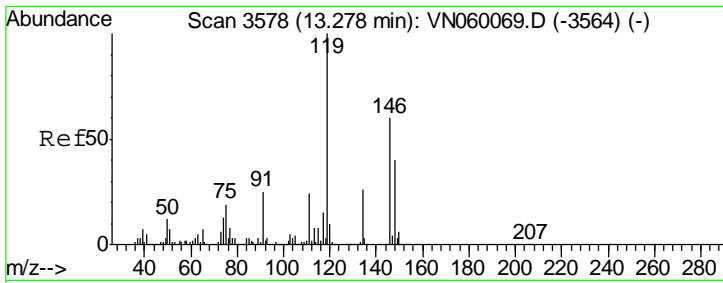
Tgt Ion	Resp	Lower	Upper
75	100		
53	0.0	73.9	110.9#
89	0.0	37.0	55.4#



#82
 4-Chlorotoluene
 Concen: 0.233 ug/l
 RT: 12.77 min Scan# 3421
 Delta R.T. 0.00 min
 Lab File: VN060087.D
 Acq: 13 Feb 2020 12:20

Tgt Ion	Resp	Lower	Upper
91	100		
126	24.9	17.1	51.3

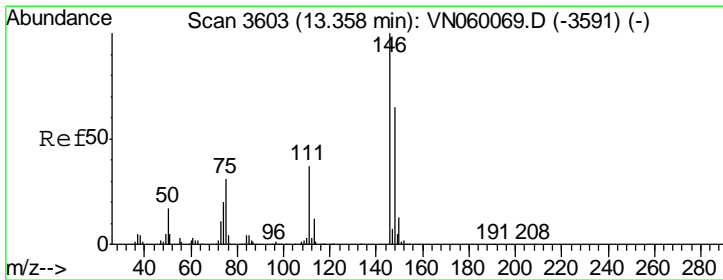
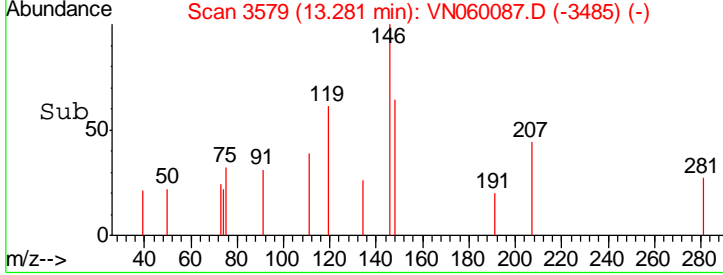
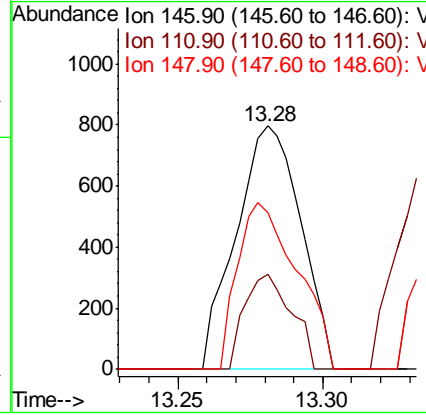
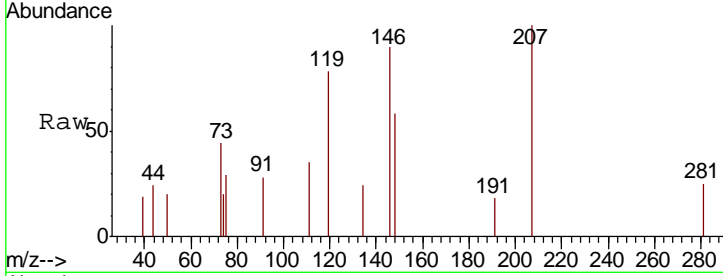




#87
 1,3-Dichlorobenzene
 Concen: 0.316 ug/l
 RT: 13.28 min Scan# 3579
 Delta R.T. 0.00 min
 Lab File: VN060087.D
 Acq: 13 Feb 2020 12:20

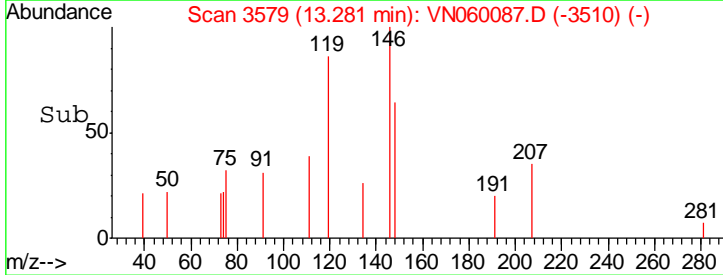
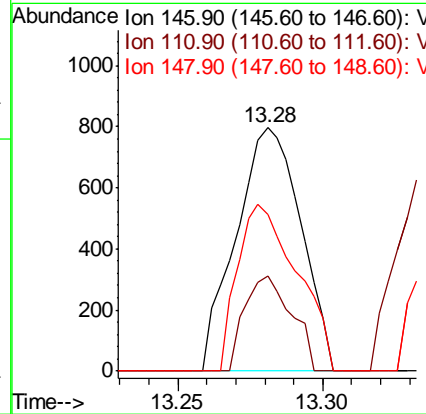
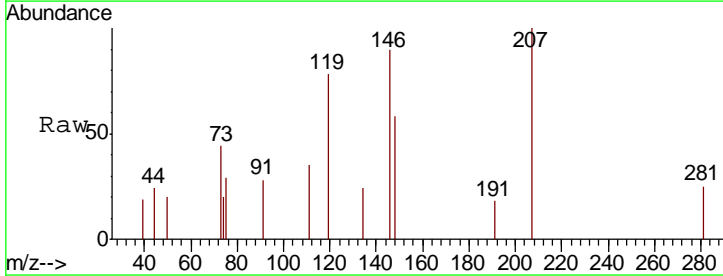
Instrument : MSVOA_N
 ClientSampled :

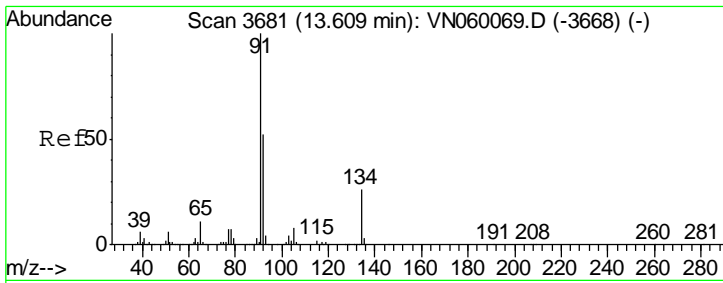
Tgt Ion	Resp	Lower	Upper
146	100		
111	28.2	19.8	59.3
148	62.7	32.0	96.2



#88
 1,4-Dichlorobenzene
 Concen: 0.316 ug/l
 RT: 13.28 min Scan# 3579
 Delta R.T. -0.08 min
 Lab File: VN060087.D
 Acq: 13 Feb 2020 12:20

Tgt Ion	Resp	Lower	Upper
146	100		
111	28.2	18.9	56.5
148	62.7	32.0	96.0

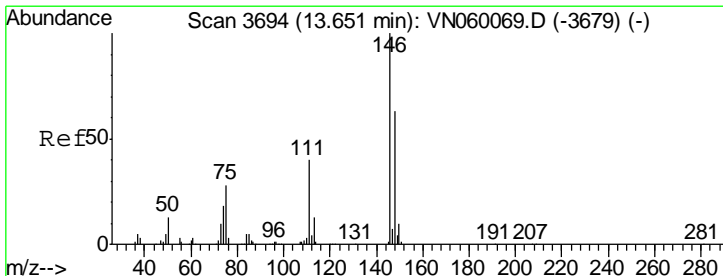
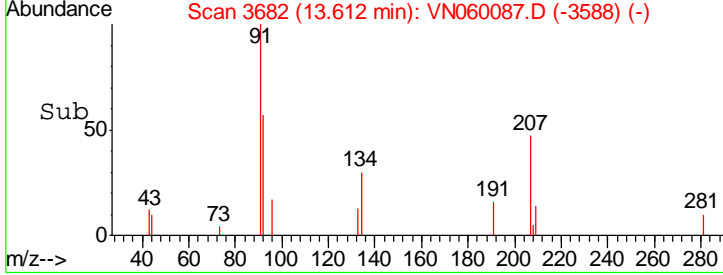
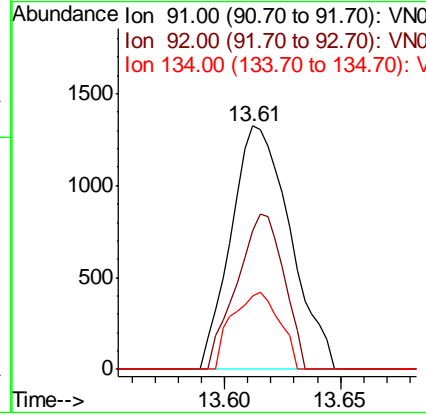
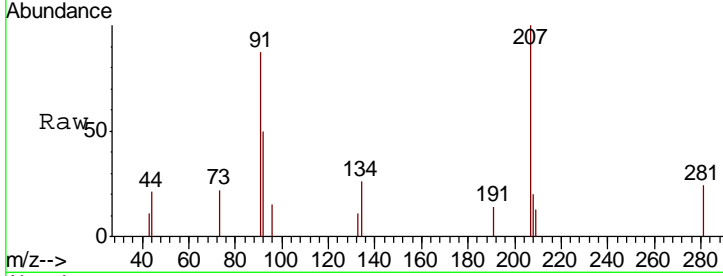




#89
 n-Butylbenzene
 Concen: 0.339 ug/l
 RT: 13.61 min Scan# 3682
 Delta R.T. 0.00 min
 Lab File: VN060087.D
 Acq: 13 Feb 2020 12:20

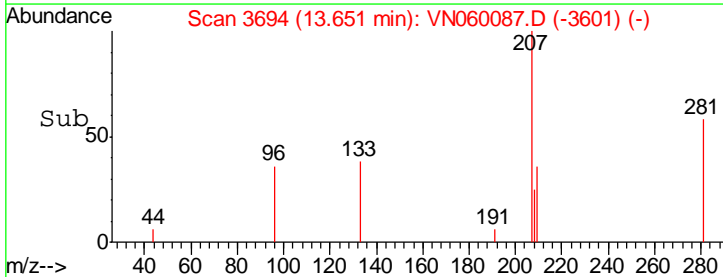
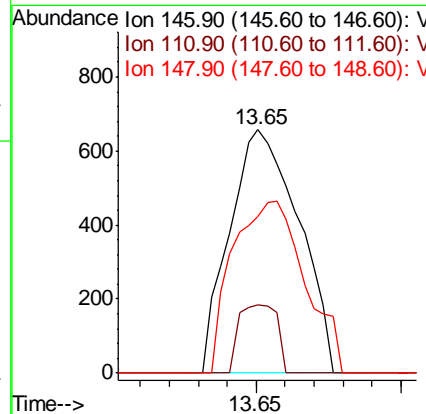
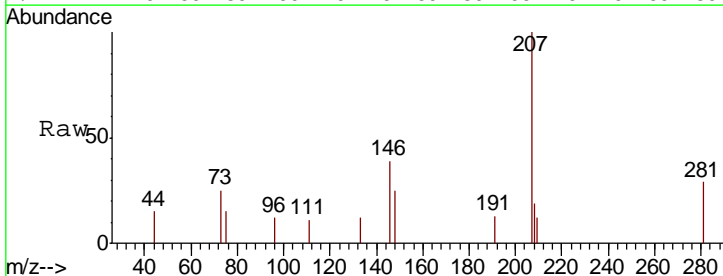
Instrument : MSVOA_N
 ClientSampled :

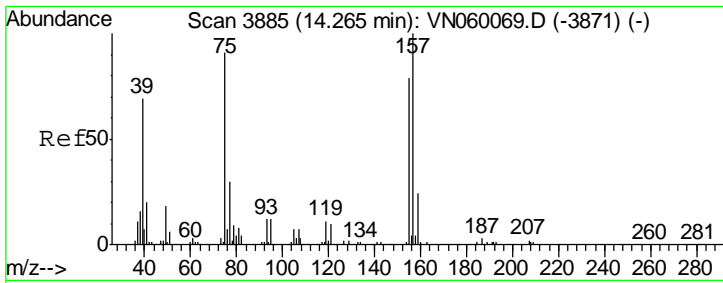
Tgt Ion	Resp	Lower	Upper
91	100		
92	50.9	26.1	78.2
134	25.6	13.1	39.3



#91
 1,2-Dichlorobenzene
 Concen: 0.284 ug/l
 RT: 13.65 min Scan# 3694
 Delta R.T. -0.00 min
 Lab File: VN060087.D
 Acq: 13 Feb 2020 12:20

Tgt Ion	Resp	Lower	Upper
146	100		
111	15.4	20.1	60.2#
148	73.7	31.9	95.5

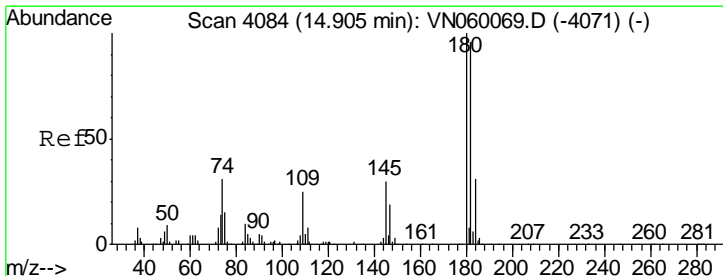
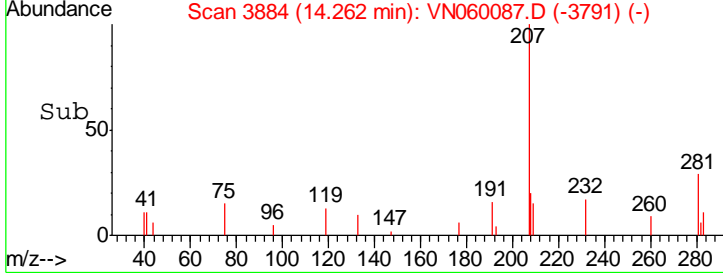
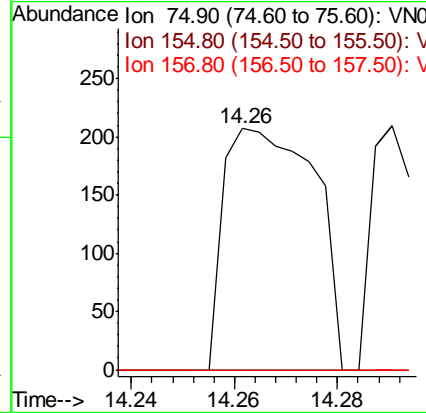
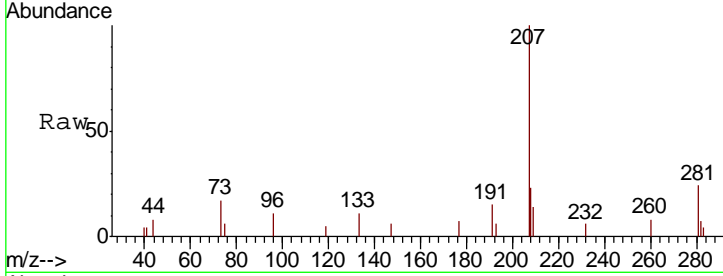




#92
 1,2-Dibromo-3-Chloropropane
 Concen: Below Cal
 RT: 14.26 min Scan# 3884
 Delta R.T. -0.00 min
 Lab File: VN060087.D
 Acq: 13 Feb 2020 12:20

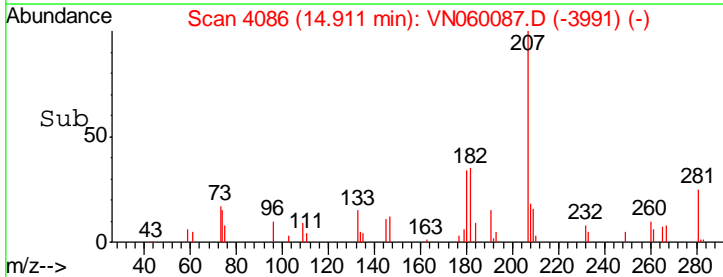
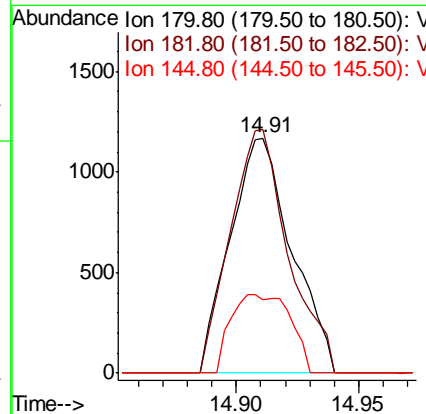
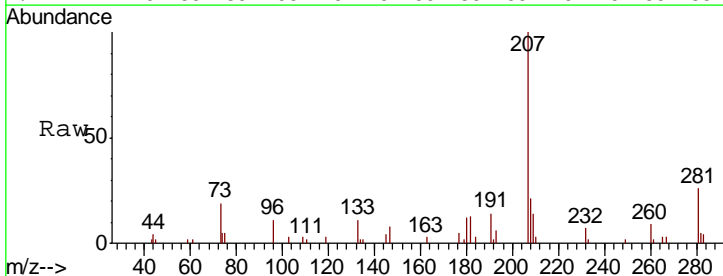
Instrument :
 MSVOA_N
 ClientSampled :

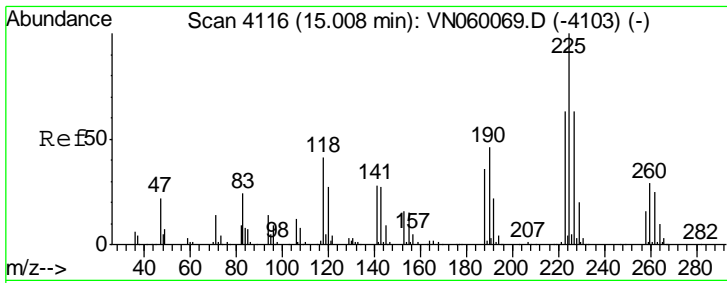
Tgt Ion	Resp	Lower	Upper
75	100		
155	0.0	43.0	129.0#
157	0.0	54.9	164.5#



#93
 1,2,4-Trichlorobenzene
 Concen: 0.909 ug/l
 RT: 14.91 min Scan# 4086
 Delta R.T. 0.01 min
 Lab File: VN060087.D
 Acq: 13 Feb 2020 12:20

Tgt Ion	Resp	Lower	Upper
180	100		
182	97.4	47.9	143.8
145	32.3	15.2	45.5

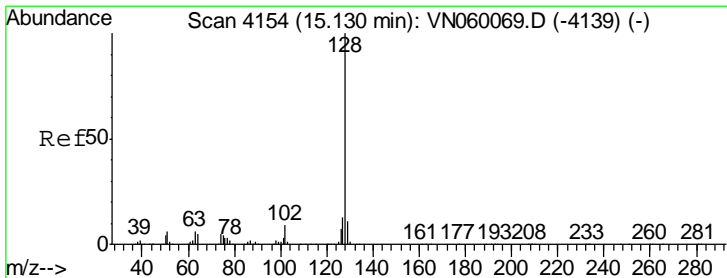
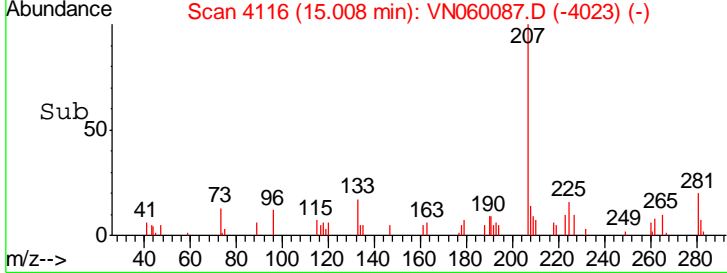
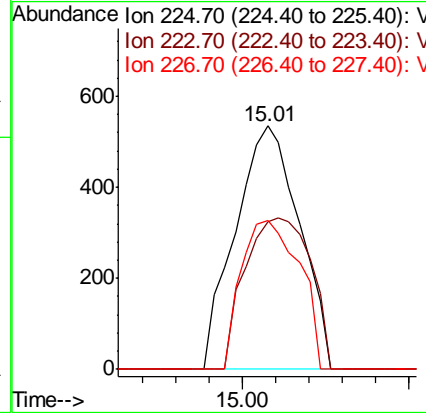
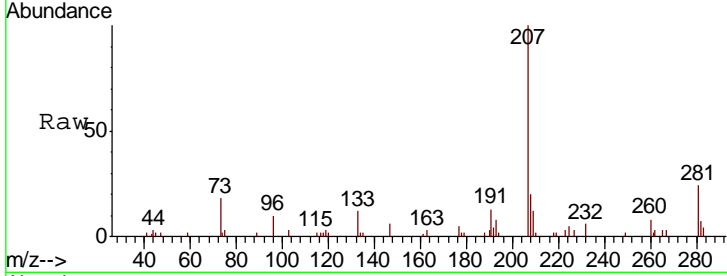




#94
 Hexachlorobutadiene
 Concen: 0.546 ug/l
 RT: 15.01 min Scan# 4116
 Delta R.T. -0.00 min
 Lab File: VN060087.D
 Acq: 13 Feb 2020 12:20

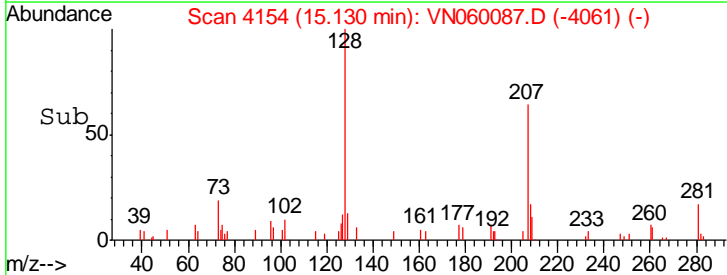
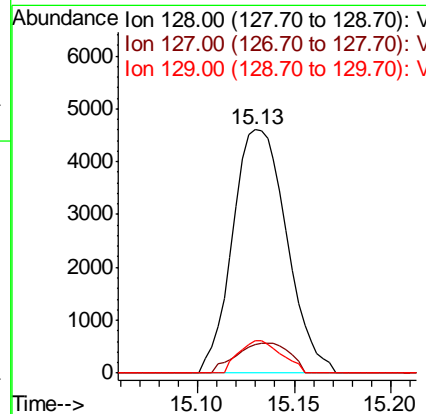
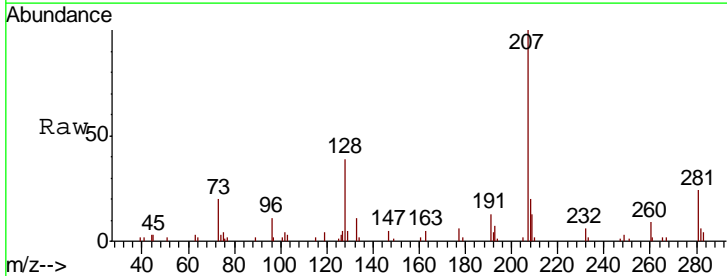
Instrument :
 MSVOA_N
 ClientSampled :

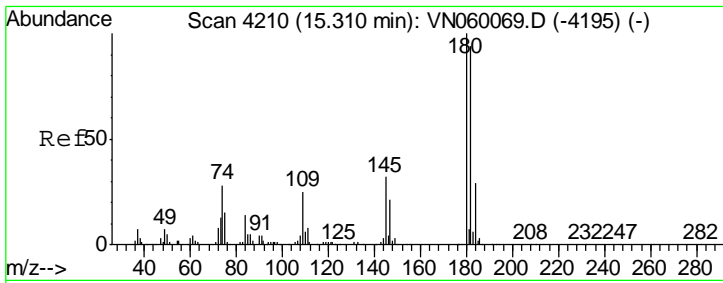
Tgt Ion	Resp	Lower	Upper
225	720		
223	63.6	31.5	94.5
227	55.4	31.8	95.4



#95
 Naphthalene
 Concen: 1.472 ug/l
 RT: 15.13 min Scan# 4154
 Delta R.T. -0.00 min
 Lab File: VN060087.D
 Acq: 13 Feb 2020 12:20

Tgt Ion	Resp	Lower	Upper
128	8949		
127	12.2	10.3	15.5
129	10.5	8.6	13.0





#96
 1,2,3-Trichlorobenzene
 Concen: 1.118 ug/l
 RT: 15.32 min Scan# 4212
 Delta R.T. 0.01 min
 Lab File: VN060087.D
 Acq: 13 Feb 2020 12:20

Instrument :
 MSVOA_N
 ClientSampled :

Tot Ion	180	182	145	Resp	Lower	Upper
2506	100	82.2	31.7		47.5	142.5
					16.1	48.3

