

Data Path : Z:\voasrv\HPCHEM1\MSVOA_N\Data\VN021423\
 Data File : VN076668.D
 Acq On : 14 Feb 2023 18:12
 Operator : JC\MD
 Sample : IBLK
 Misc : 5.0mL/MSVOA_N/WATER
 ALS Vial : 18 Sample Multiplier: 1

Instrument :
 MSVOA_N
ClientSampleId :
 IBLK

Quant Time: Feb 15 03:17:07 2023
 Quant Method : Z:\voasrv\HPCHEM1\MSVOA_N\methods\82N021323W.M
 Quant Title : SW846 8260
 QLast Update : Tue Feb 14 01:44:47 2023
 Response via : Initial Calibration

Compound	R.T.	QIon	Response	Conc	Units	Dev(Min)
Internal Standards						
1) Pentafluorobenzene	8.231	168	401722	50.000	ug/l	0.00
34) 1,4-Difluorobenzene	9.107	114	730339	50.000	ug/l	0.00
63) Chlorobenzene-d5	11.872	117	635653	50.000	ug/l	0.00
72) 1,4-Dichlorobenzene-d4	13.795	152	265665	50.000	ug/l	0.00
System Monitoring Compounds						
33) 1,2-Dichloroethane-d4	8.584	65	283468	51.101	ug/l	0.00
Spiked Amount	50.000	Range	74 - 125	Recovery	=	102.200%
35) Dibromofluoromethane	8.172	113	222043	46.425	ug/l	0.00
Spiked Amount	50.000	Range	75 - 124	Recovery	=	92.840%
50) Toluene-d8	10.572	98	887764	49.702	ug/l	0.00
Spiked Amount	50.000	Range	86 - 113	Recovery	=	99.400%
62) 4-Bromofluorobenzene	12.848	95	276826	46.794	ug/l	0.00
Spiked Amount	50.000	Range	83 - 123	Recovery	=	93.580%

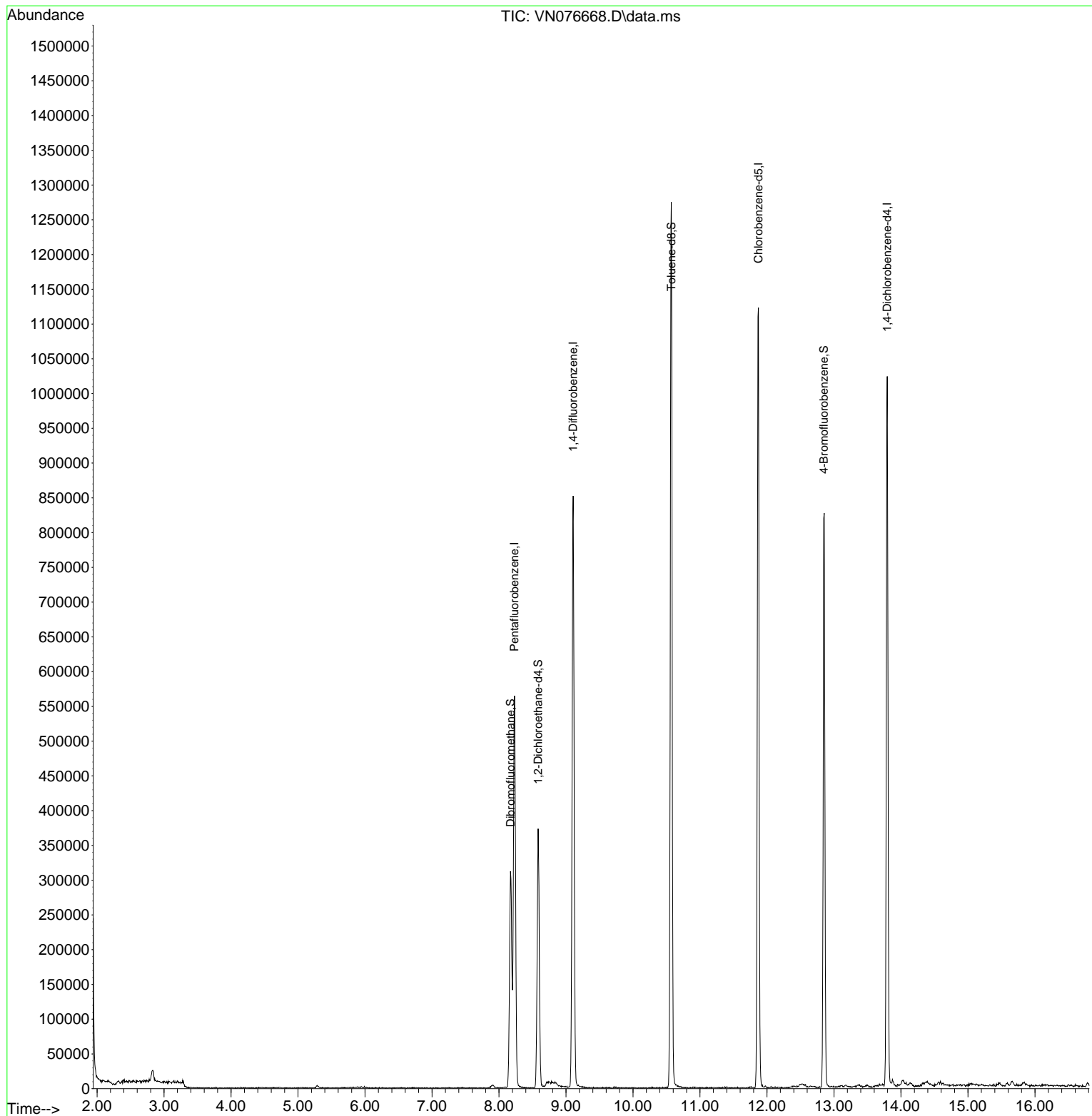
Target Compounds Qvalue

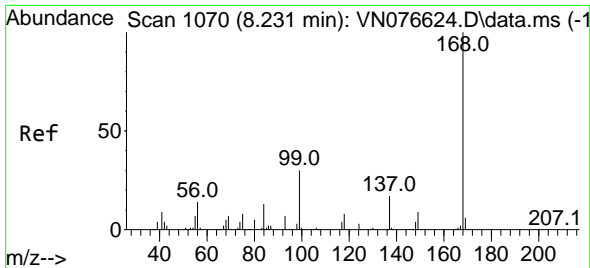
(#) = qualifier out of range (m) = manual integration (+) = signals summed

Data Path : Z:\voasrv\HPCHEM1\MSVOA_N\Data\VN021423\
 Data File : VN076668.D
 Acq On : 14 Feb 2023 18:12
 Operator : JC\MD
 Sample : IBLK
 Misc : 5.0mL/MSVOA_N/WATER
 ALS Vial : 18 Sample Multiplier: 1

Instrument :
 MSVOA_N
 ClientSampleId :
 IBLK

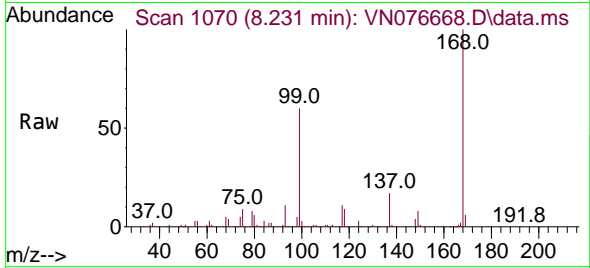
Quant Time: Feb 15 03:17:07 2023
 Quant Method : Z:\voasrv\HPCHEM1\MSVOA_N\methods\82N021323W.M
 Quant Title : SW846 8260
 QLast Update : Tue Feb 14 01:44:47 2023
 Response via : Initial Calibration



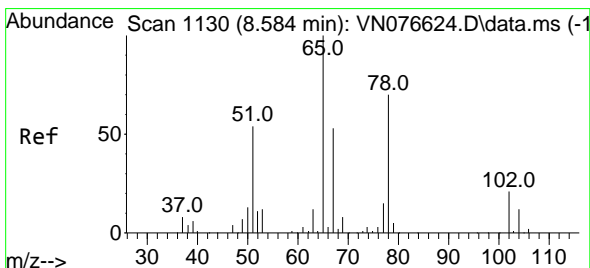
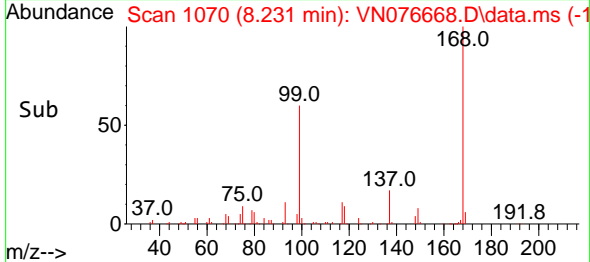
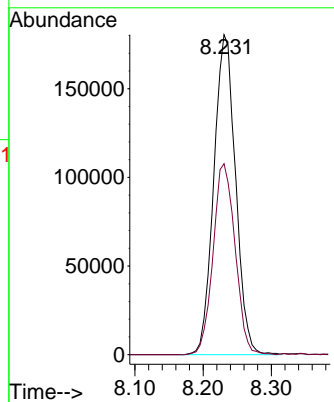


#1
 Pentafluorobenzene
 Concen: 50.000 ug/l
 RT: 8.231 min Scan# 1070
 Delta R.T. -0.000 min
 Lab File: VN076668.D
 Acq: 14 Feb 2023 18:12

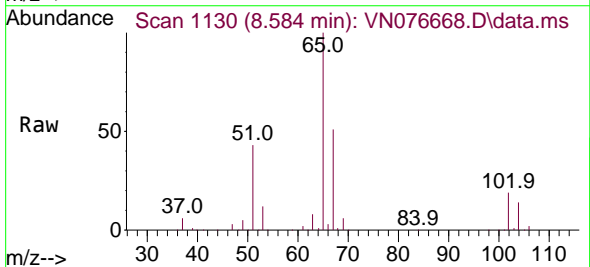
Instrument :
 MSVOA_N
 ClientSampleId :
 IBLK



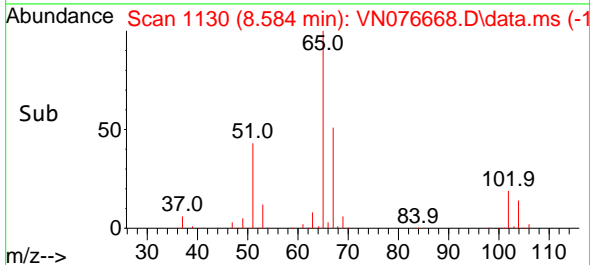
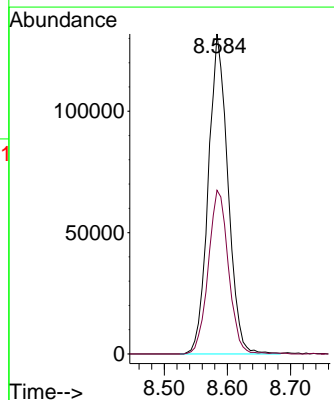
Tgt Ion:168 Resp: 401722
 Ion Ratio Lower Upper
 168 100
 99 59.7 44.8 67.2

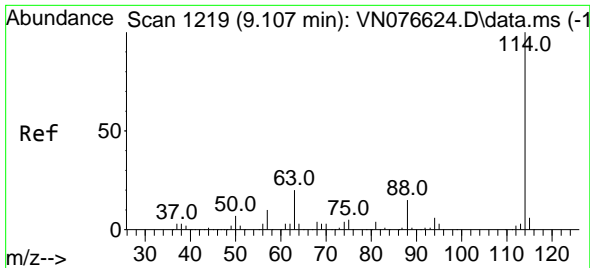


#33
 1,2-Dichloroethane-d4
 Concen: 51.101 ug/l
 RT: 8.584 min Scan# 1130
 Delta R.T. -0.000 min
 Lab File: VN076668.D
 Acq: 14 Feb 2023 18:12



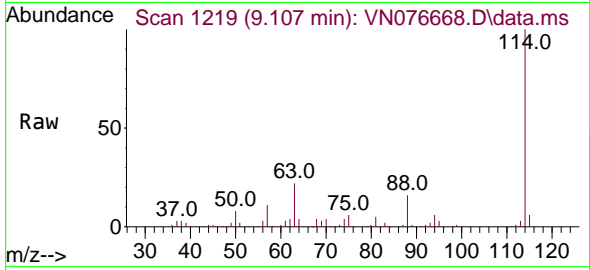
Tgt Ion: 65 Resp: 283468
 Ion Ratio Lower Upper
 65 100
 67 52.6 0.0 105.6



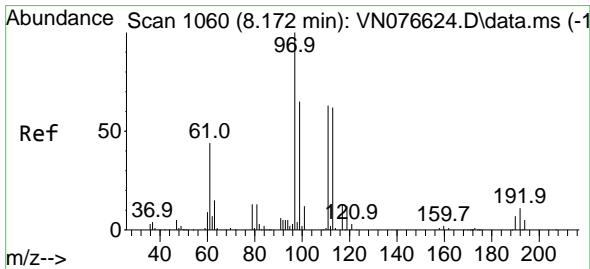
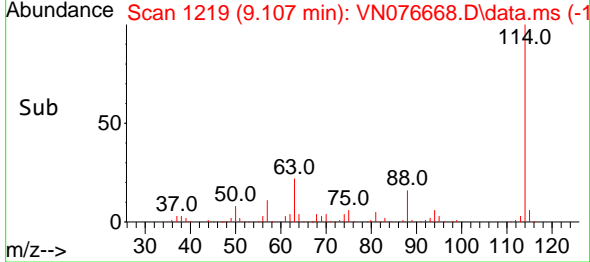
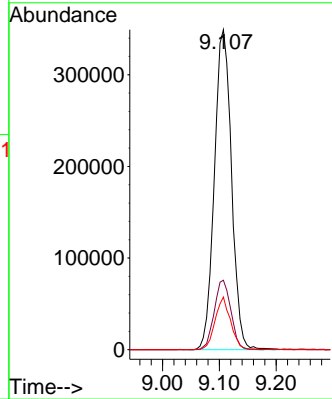


#34
 1,4-Difluorobenzene
 Concen: 50.000 ug/l
 RT: 9.107 min Scan# 111
 Delta R.T. 0.000 min
 Lab File: VN076668.D
 Acq: 14 Feb 2023 18:12

Instrument :
 MSVOA_N
 ClientSampleId :
 IBLK

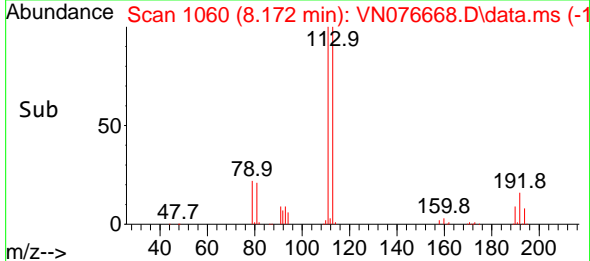
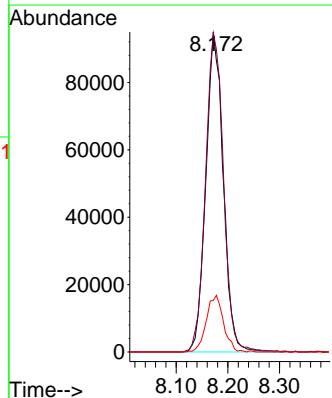
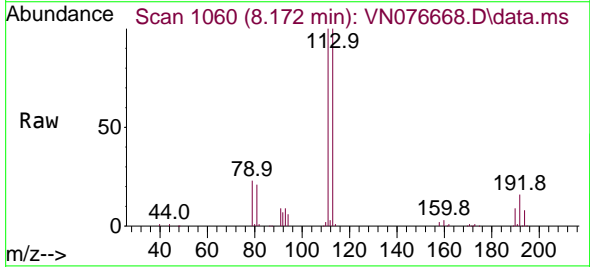


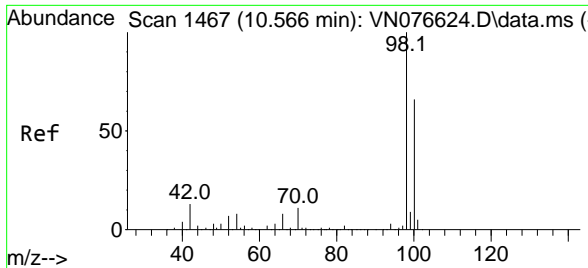
Tgt Ion:114 Resp: 730339
 Ion Ratio Lower Upper
 114 100
 63 21.7 0.0 40.0
 88 16.5 0.0 29.6



#35
 Dibromofluoromethane
 Concen: 46.425 ug/l
 RT: 8.172 min Scan# 1060
 Delta R.T. -0.000 min
 Lab File: VN076668.D
 Acq: 14 Feb 2023 18:12

Tgt Ion:113 Resp: 222043
 Ion Ratio Lower Upper
 113 100
 111 102.6 83.1 124.7
 192 17.5 15.6 23.4

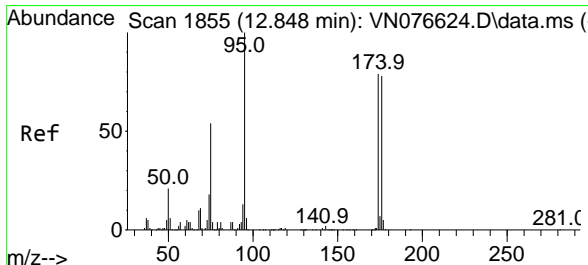
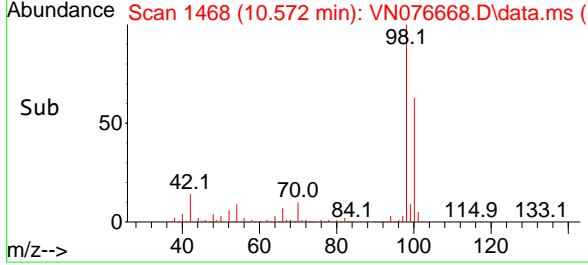
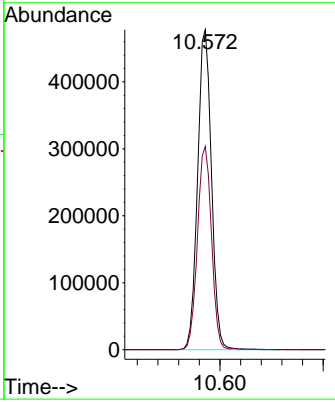
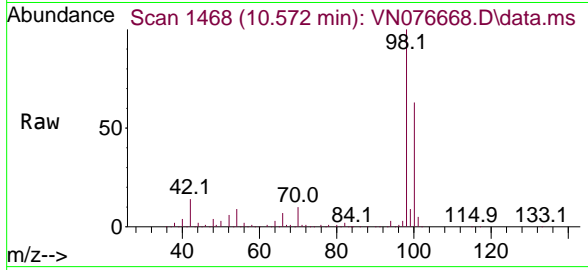




#50
 Toluene-d8
 Concen: 49.702 ug/l
 RT: 10.572 min Scan# 1468
 Delta R.T. 0.006 min
 Lab File: VN076668.D
 Acq: 14 Feb 2023 18:12

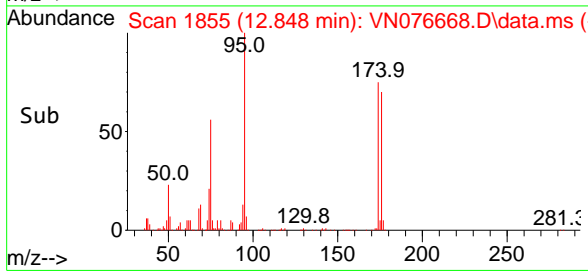
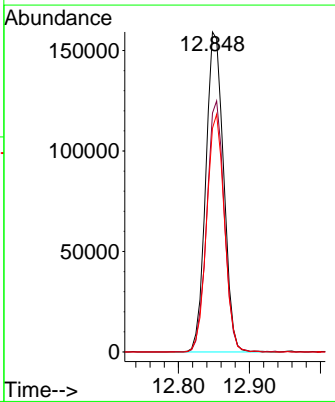
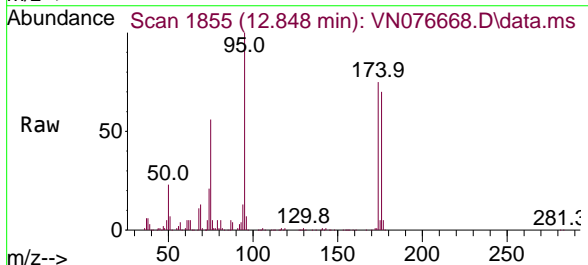
Instrument : MSVOA_N
 ClientSampleId : IBLK

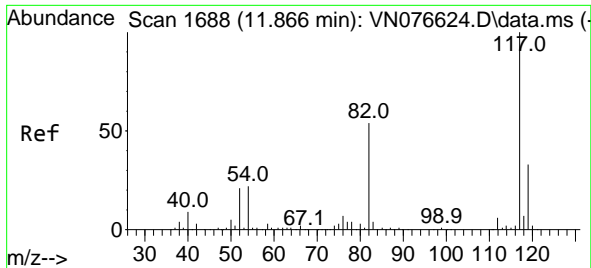
Tgt Ion: 98 Resp: 887764
 Ion Ratio Lower Upper
 98 100
 100 64.5 52.9 79.3



#62
 4-Bromofluorobenzene
 Concen: 46.794 ug/l
 RT: 12.848 min Scan# 1855
 Delta R.T. -0.000 min
 Lab File: VN076668.D
 Acq: 14 Feb 2023 18:12

Tgt Ion: 95 Resp: 276826
 Ion Ratio Lower Upper
 95 100
 174 76.9 0.0 169.2
 176 73.9 0.0 163.4



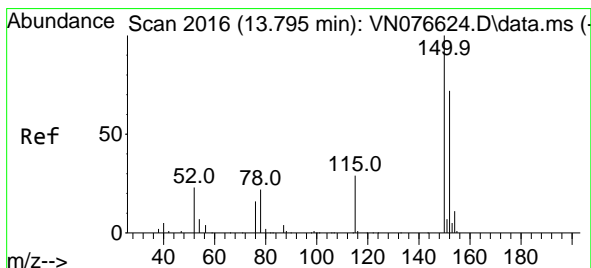
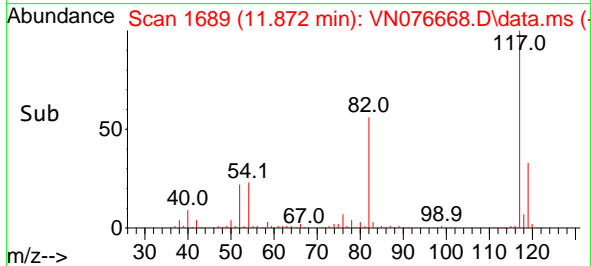
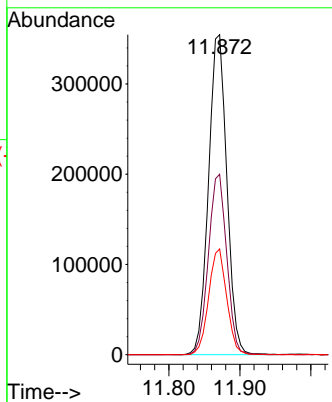
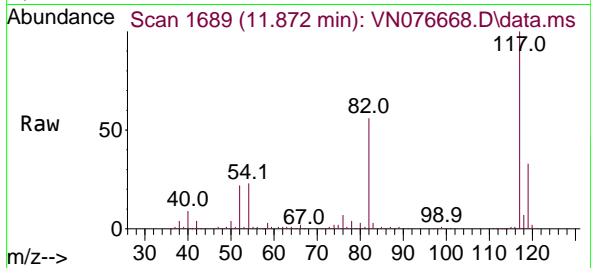


#63
 Chlorobenzene-d5
 Concen: 50.000 ug/l
 RT: 11.872 min Scan# 117
 Delta R.T. 0.006 min
 Lab File: VN076668.D
 Acq: 14 Feb 2023 18:12

Instrument :
 MSVOA_N
 ClientSampleId :
 IBLK

Tgt Ion:117 Resp: 635653

Ion	Ratio	Lower	Upper
117	100		
82	56.4	43.4	65.2
119	33.0	26.1	39.1



#72
 1,4-Dichlorobenzene-d4
 Concen: 50.000 ug/l
 RT: 13.795 min Scan# 2016
 Delta R.T. -0.000 min
 Lab File: VN076668.D
 Acq: 14 Feb 2023 18:12

Tgt Ion:152 Resp: 265665

Ion	Ratio	Lower	Upper
152	100		
115	61.1	29.3	87.9
150	154.9	0.0	349.8

