

Data Path : Z:\VOASRV\HPCHEM1\MSVOA_N\DATA\VN021519\
 Data File : VN053824.D
 Acq On : 16 Feb 2019 2:54
 Operator : JC/SP
 Sample : PB117124ZHE#09
 Misc : 5.00mL/MSVOA_N/WATER
 ALS Vial : 38 Sample Multiplier: 1

Instrument :
 MSVOA_N
 ClientSampleId :
 PB117124ZHE#09

Quant Time: Feb 18 08:15:02 2019
 Quant Method : Z:\VOASRV\HPCHEM1\MSVOA_N\METHODS\82N013019W.M
 Quant Title : SW846 8260
 QLast Update : Fri Feb 01 09:11:52 2019
 Response via : Initial Calibration

Internal Standards	R.T.	QIon	Response	Conc	Units	Dev(Min)
1) Pentafluorobenzene	7.67	168	642966	50.00	ug/l	0.00
34) 1,4-Difluorobenzene	8.59	114	1105020	50.00	ug/l	0.00
63) Chlorobenzene-d5	11.41	117	1050571	50.00	ug/l	0.00
72) 1,4-Dichlorobenzene-d4	13.35	152	410388	50.00	ug/l	0.00

System Monitoring Compounds

33) 1,2-Dichloroethane-d4	8.03	65	354067	54.89	ug/l	0.00
Spiked Amount	50.000		Recovery	=	109.78%	
35) Dibromofluoromethane	7.59	113	350944	50.26	ug/l	0.00
Spiked Amount	50.000		Recovery	=	100.52%	
50) Toluene-d8	10.09	98	1380480	52.66	ug/l	0.00
Spiked Amount	50.000		Recovery	=	105.32%	
62) 4-Bromofluorobenzene	12.40	95	448840	51.33	ug/l	0.00
Spiked Amount	50.000		Recovery	=	102.66%	

Target Compounds

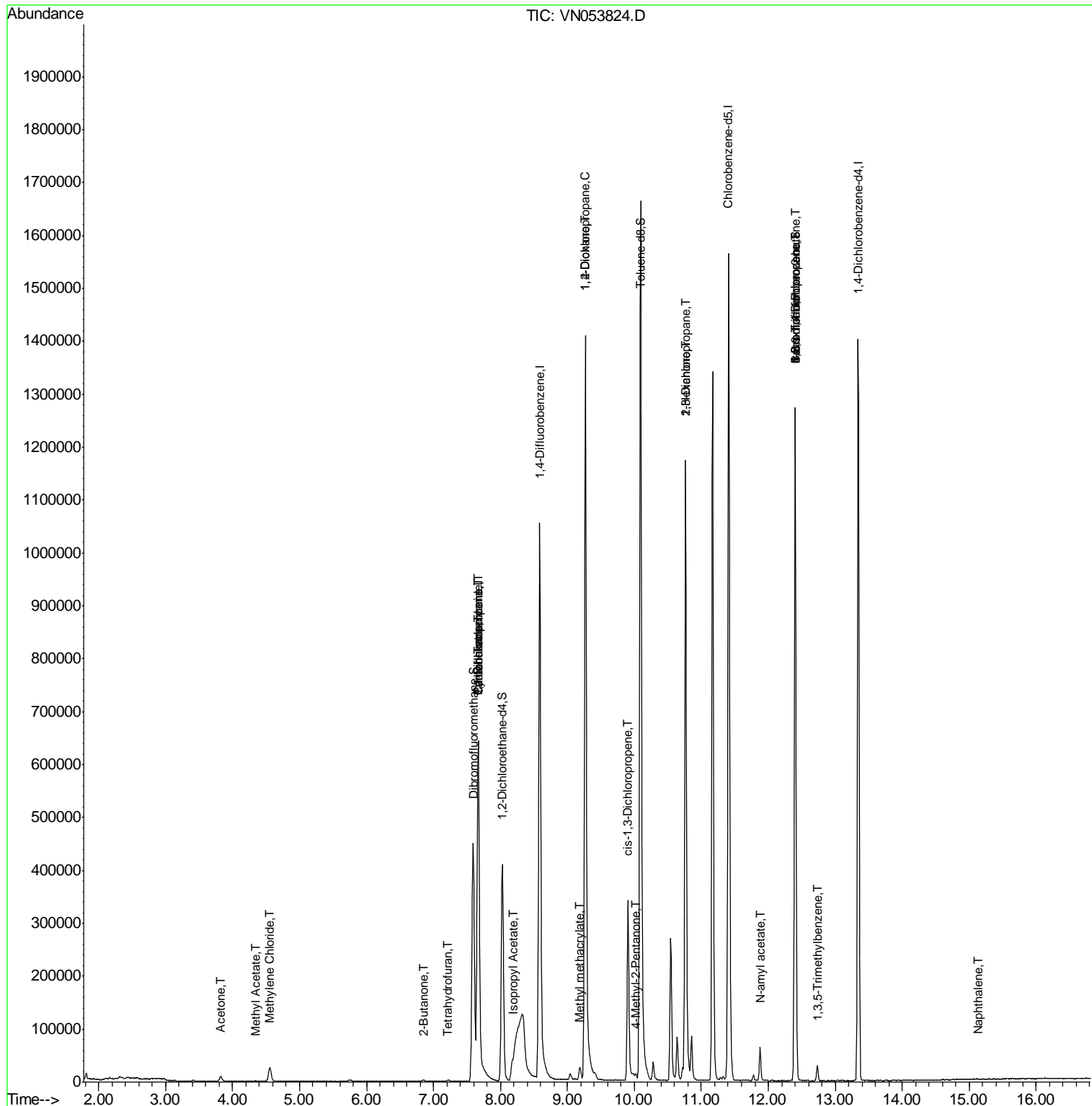
						Qvalue
16) Acetone	3.82	43	17260	10.432	ug/l	94
18) Methyl Acetate	4.35	43	3174	0.648	ug/l #	58
20) Methylene Chloride	4.55	84	20725	2.986	ug/l	94
25) 2-Butanone	6.85	43	4228	1.792	ug/l	95
29) Tetrahydrofuran	7.21	42	910	0.601	ug/l #	68
31) Cyclohexane	7.67	56	9505	0.704	ug/l #	1
36) 1,1-Dichloropropene	7.67	75	38078	3.823	ug/l #	48
38) Carbon Tetrachloride	7.67	117	51812	5.163	ug/l #	15
43) Isopropyl Acetate	8.18	43	37175	3.460	ug/l #	79
45) 1,2-Dichloropropane	9.27	63	1767	0.225	ug/l #	43
48) Methyl methacrylate	9.18	41	9659	1.883	ug/l #	12
49) 1,4-Dioxane	9.27	88	101	40.404	ug/l #	1
51) 4-Methyl-2-Pentanone	10.02	43	8928	1.691	ug/l #	34
54) cis-1,3-Dichloropropene	9.90	75	72941	6.242	ug/l #	61
57) 1,3-Dichloropropane	10.77	76	13353	1.189	ug/l #	43
59) 2-Hexanone	10.76	43	173583	48.431	ug/l #	51
71) Bromoform	12.40	173	3103	0.581	ug/l #	1
74) N-amyl acetate	11.88	43	19369	2.792	ug/l #	52
76) 1,2,3-Trichloropropane	12.40	75	207864	39.434	ug/l #	100
80) 1,3,5-Trimethylbenzene	12.73	105	15622	0.653	ug/l	95
81) trans-1,4-Dichloro-2-buten	12.40	75	207864	110.885	ug/l #	15
95) Naphthalene	15.13	128	141	1.744	ug/l #	69

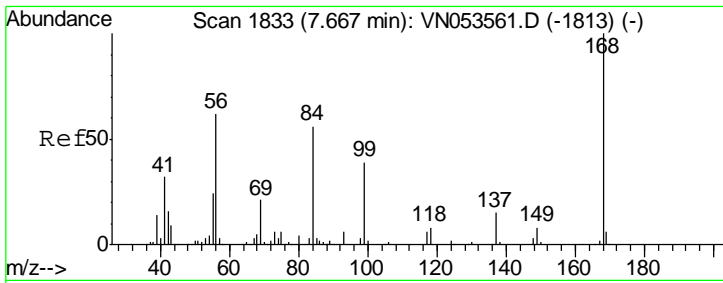
(#) = qualifier out of range (m) = manual integration (+) = signals summed

Data Path : Z:\VOASRV\HPCHEM1\MSVOA_N\DATA\VN021519\
 Data File : VN053824.D
 Acq On : 16 Feb 2019 2:54
 Operator : JC/SP
 Sample : PB117124ZHE#09
 Misc : 5.00mL/MSVOA_N/WATER
 ALS Vial : 38 Sample Multiplier: 1

Instrument :
 MSVOA_N
 Client Sample ID :
 PB117124ZHE#09

Quant Time: Feb 18 08:15:02 2019
 Quant Method : Z:\VOASRV\HPCHEM1\MSVOA_N\METHODS\82N013019W.M
 Quant Title : SW846 8260
 QLast Update : Fri Feb 01 09:11:52 2019
 Response via : Initial Calibration

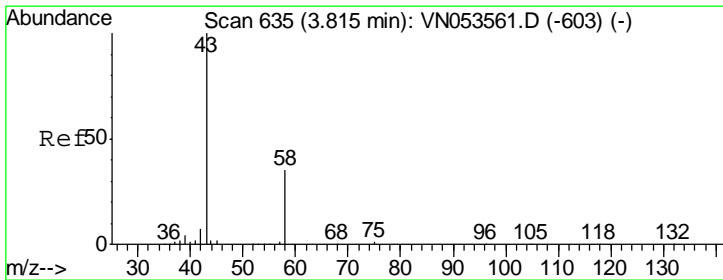
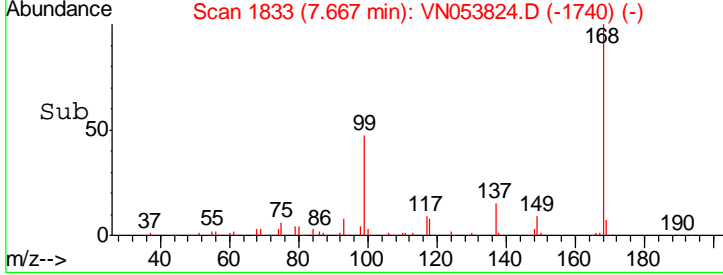
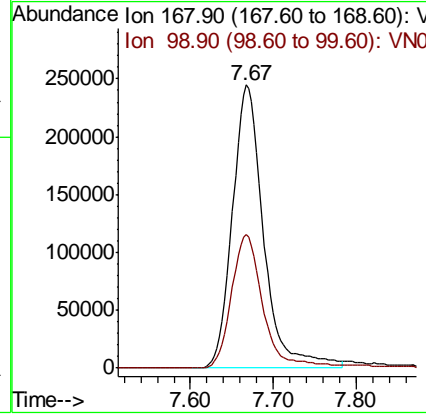
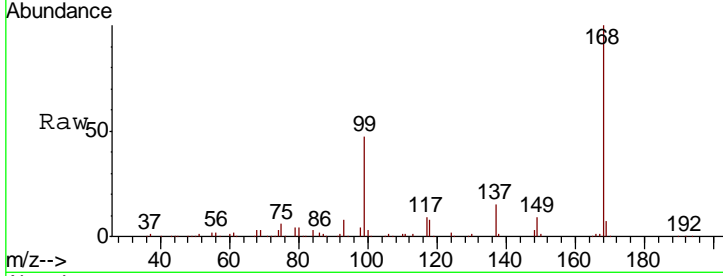




#1
 Pentafluorobenzene
 Concen: 50.000 ug/l
 RT: 7.67 min Scan# 1833
 Delta R.T. 0.00 min
 Lab File: VN053824.D
 Acq: 16 Feb 2019 2:54

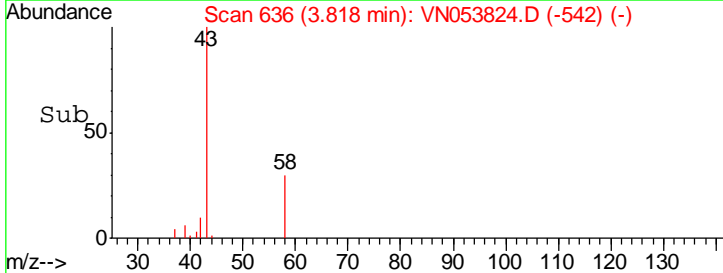
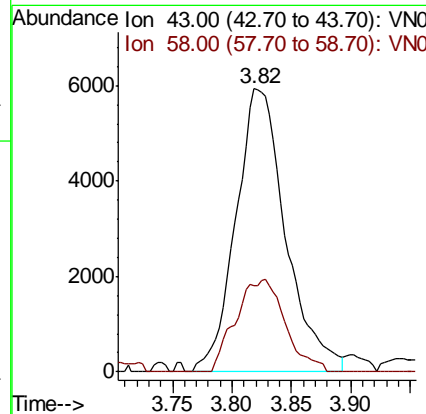
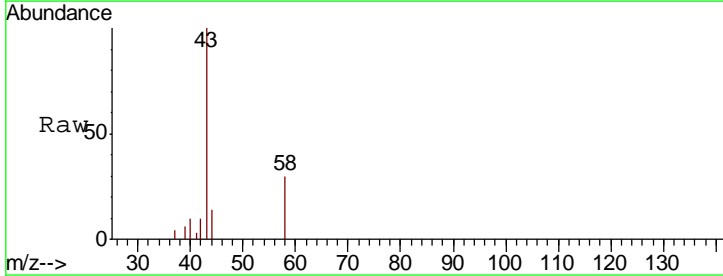
Instrument : MSVOA_N
 ClientSampled : PB117124ZHE#09

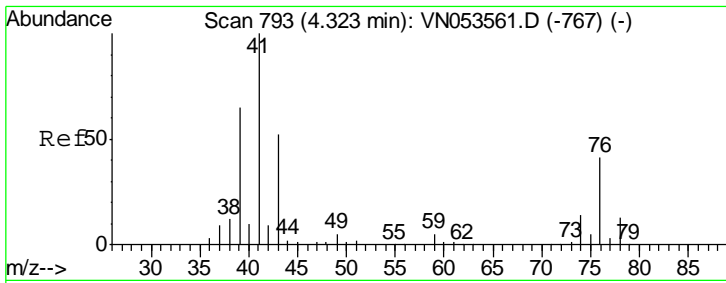
Tgt Ion: 168 Resp: 642966
 Ion Ratio Lower Upper
 168 100
 99 47.1 39.1 58.7



#16
 Acetone
 Concen: 10.432 ug/l
 RT: 3.82 min Scan# 636
 Delta R.T. 0.00 min
 Lab File: VN053824.D
 Acq: 16 Feb 2019 2:54

Tgt Ion: 43 Resp: 17260
 Ion Ratio Lower Upper
 43 100
 58 30.3 27.1 40.7

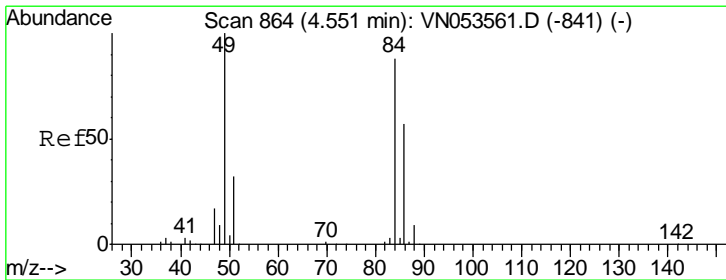
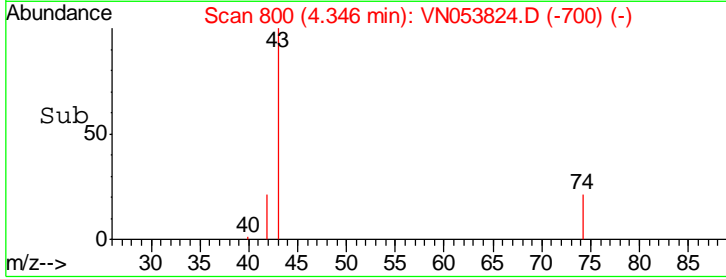
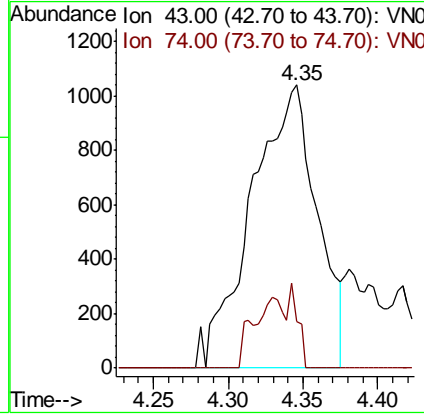
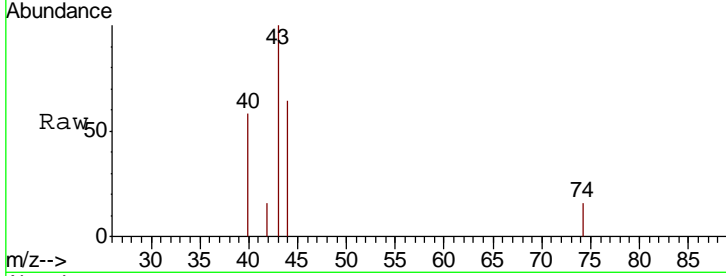




#18
 Methyl Acetate
 Concen: 0.648 ug/l
 RT: 4.35 min Scan# 800
 Delta R.T. 0.02 min
 Lab File: VN053824.D
 Acq: 16 Feb 2019 2:54

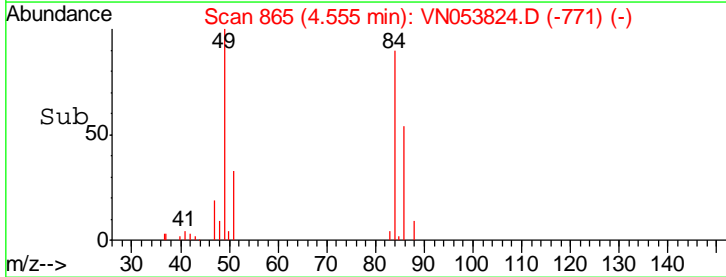
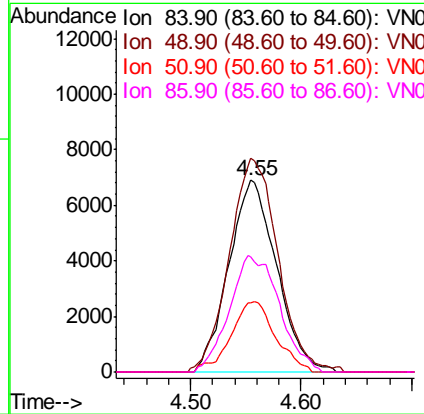
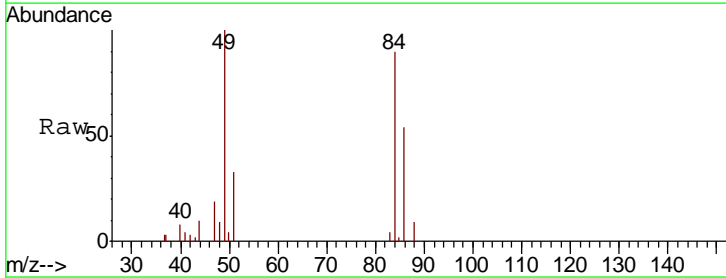
Instrument : MSVOA_N
 ClientSampleId : PB117124ZHE#09

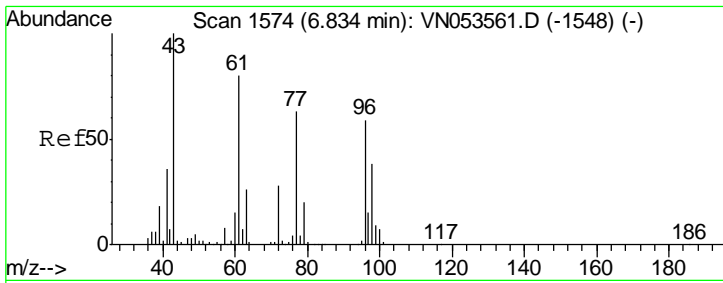
Tgt Ion: 43 Resp: 3174
 Ion Ratio Lower Upper
 43 100
 74 3.6 19.4 29.2#



#20
 Methylene Chloride
 Concen: 2.986 ug/l
 RT: 4.55 min Scan# 865
 Delta R.T. 0.00 min
 Lab File: VN053824.D
 Acq: 16 Feb 2019 2:54

Tgt Ion: 84 Resp: 20725
 Ion Ratio Lower Upper
 84 100
 49 109.4 94.3 141.5
 51 36.3 29.4 44.2
 86 60.3 51.4 77.0

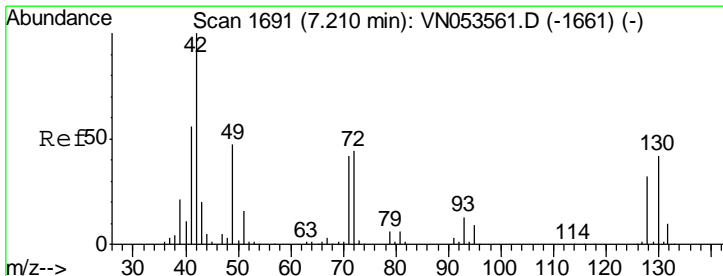
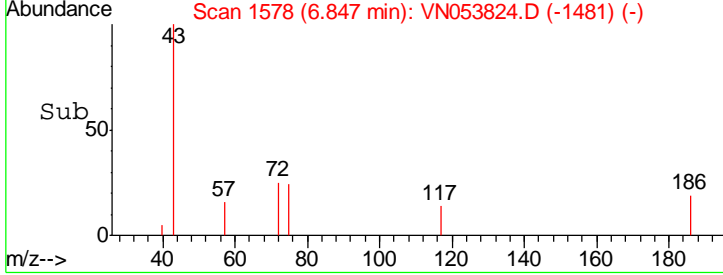
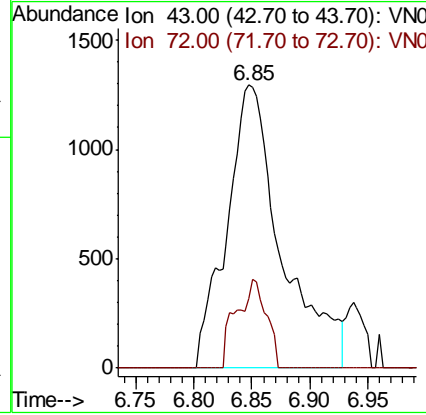
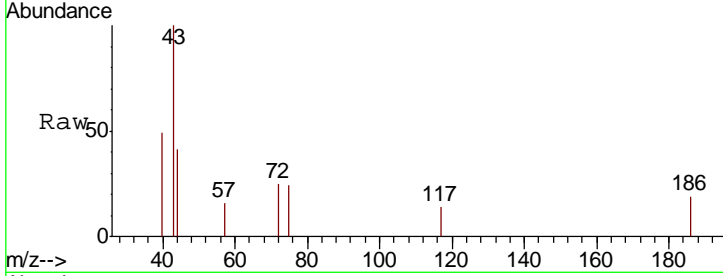




#25
 2-Butanone
 Concen: 1.792 ug/l
 RT: 6.85 min Scan# 1578
 Delta R.T. 0.01 min
 Lab File: VN053824.D
 Acq: 16 Feb 2019 2:54

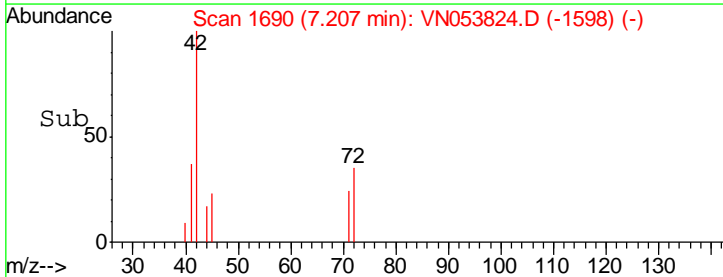
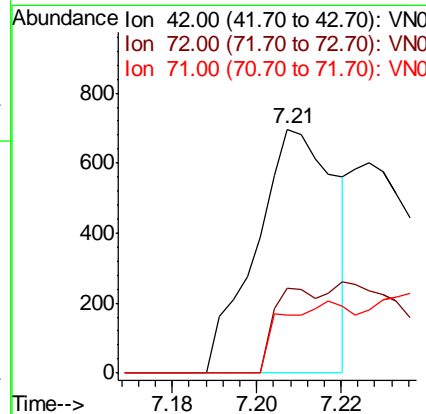
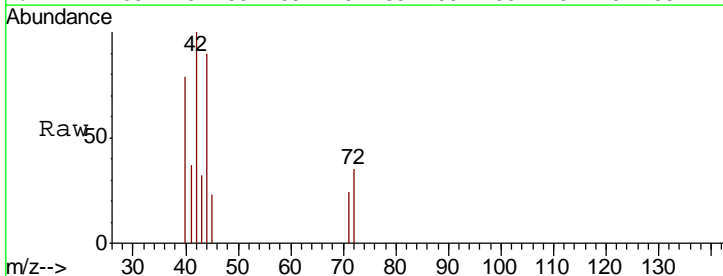
Instrument : MSVOA_N
 ClientSampleID : PB117124ZHE#09

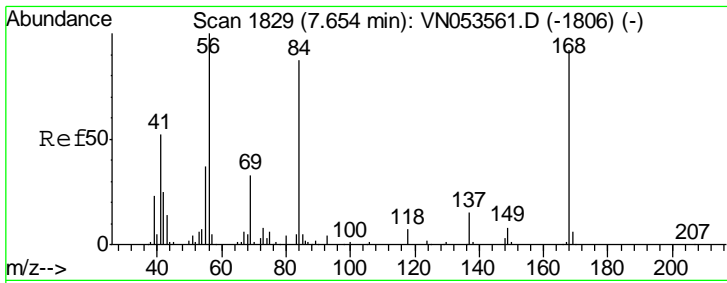
Tgt Ion: 43 Resp: 4228
 Ion Ratio Lower Upper
 43 100
 72 24.7 22.0 33.0



#29
 Tetrahydrofuran
 Concen: 0.601 ug/l
 RT: 7.21 min Scan# 1690
 Delta R.T. -0.00 min
 Lab File: VN053824.D
 Acq: 16 Feb 2019 2:54

Tgt Ion: 42 Resp: 910
 Ion Ratio Lower Upper
 42 100
 72 18.6 35.2 52.8#
 71 26.6 33.0 49.4#

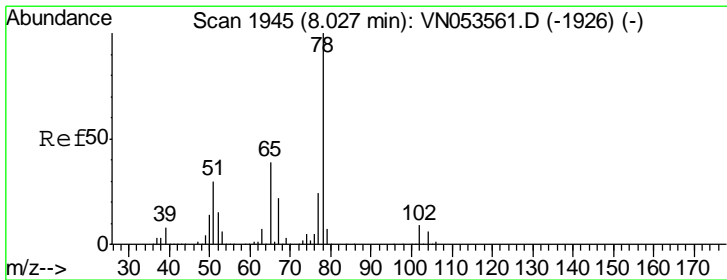
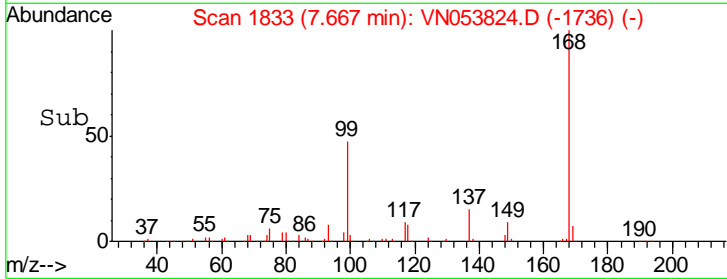
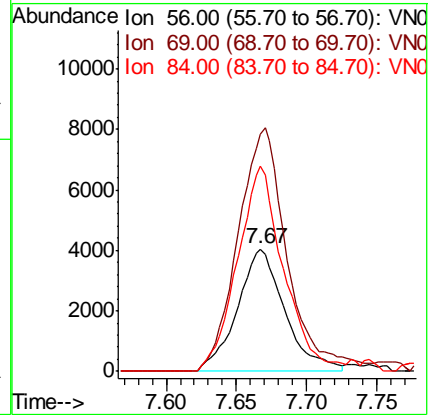
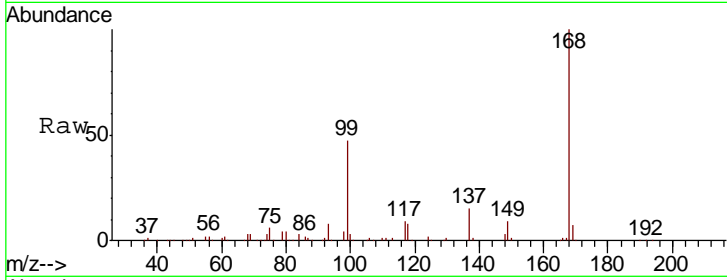




#31
 Cyclohexane
 Concen: 0.704 ug/l
 RT: 7.67 min Scan# 1833
 Delta R.T. 0.01 min
 Lab File: VN053824.D
 Acq: 16 Feb 2019 2:54

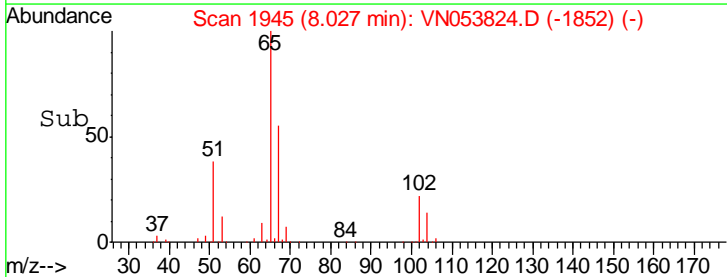
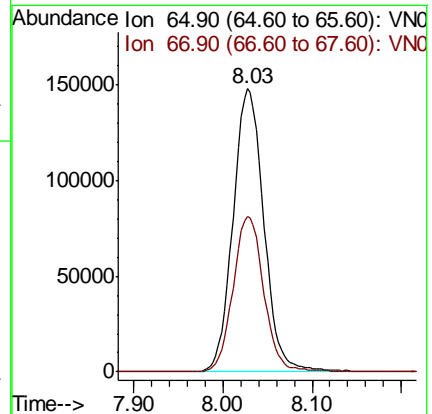
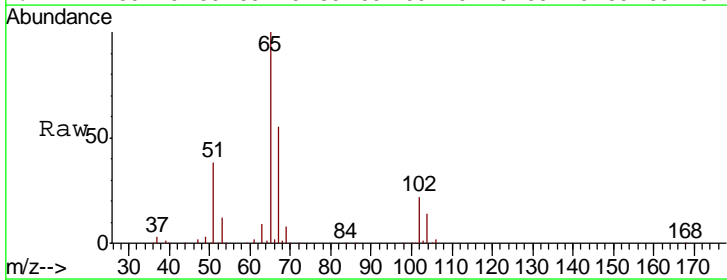
Instrument :
 MSVOA_N
 ClientSampled :
 PB117124ZHE#09

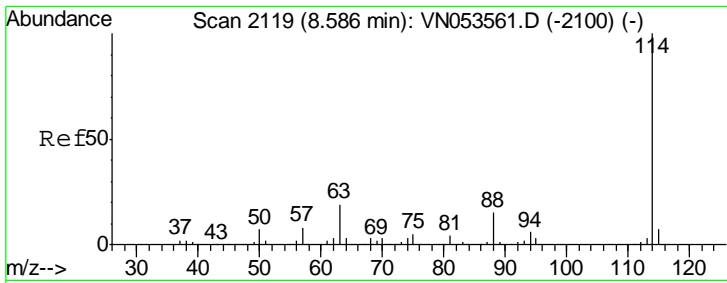
Tgt Ion	Resp	Lower	Upper
56	9505		
69	194.4	26.4	39.6#
84	167.9	67.9	101.9#



#33
 1,2-Dichloroethane-d4
 Concen: 54.893 ug/l
 RT: 8.03 min Scan# 1945
 Delta R.T. 0.00 min
 Lab File: VN053824.D
 Acq: 16 Feb 2019 2:54

Tgt Ion	Resp	Lower	Upper
65	354067		
67	54.9	0.0	111.2



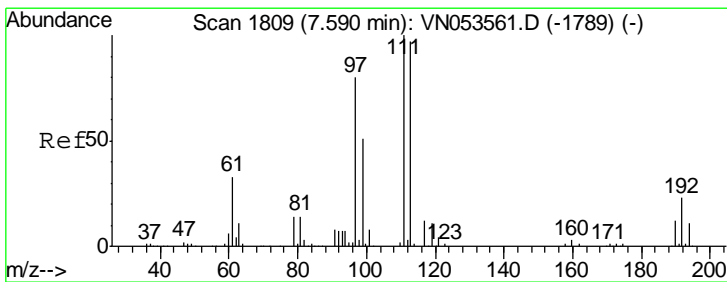
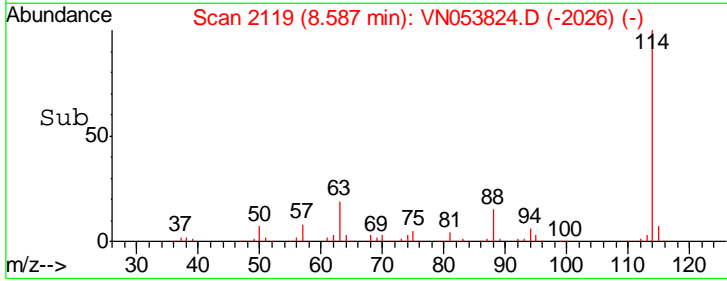
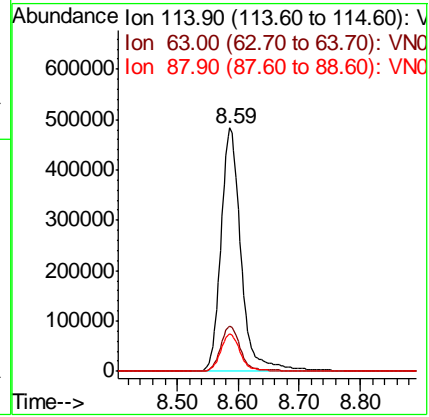
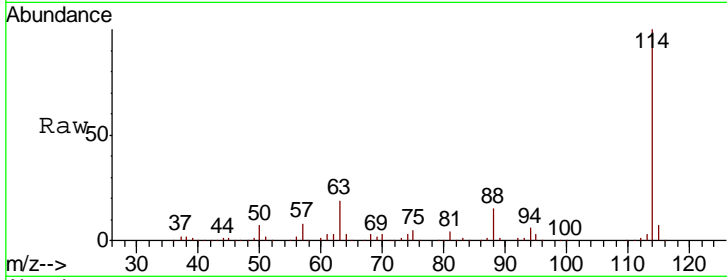


#34
 1,4-Difluorobenzene
 Concen: 50.000 ug/l
 RT: 8.59 min Scan# 2119
 Delta R.T. 0.00 min
 Lab File: VN053824.D
 Acq: 16 Feb 2019 2:54

Instrument :
 MSVOA_N
 ClientSampled :
 PB117124ZHE#09

Tgt Ion:114 Resp: 1105020

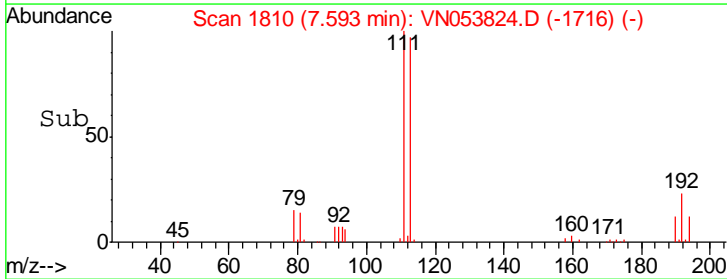
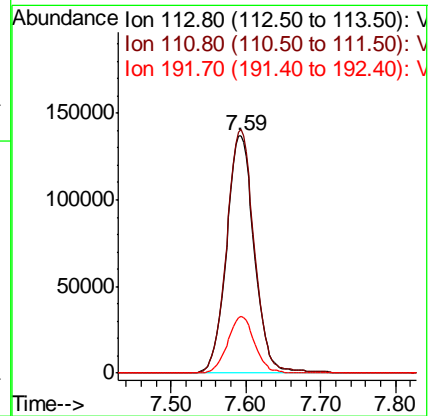
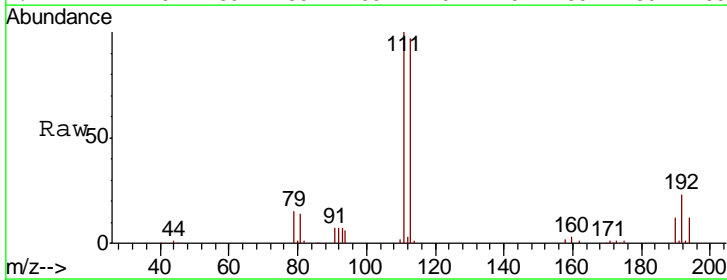
Ion	Ratio	Lower	Upper
114	100		
63	18.8	0.0	38.6
88	15.2	0.0	30.4

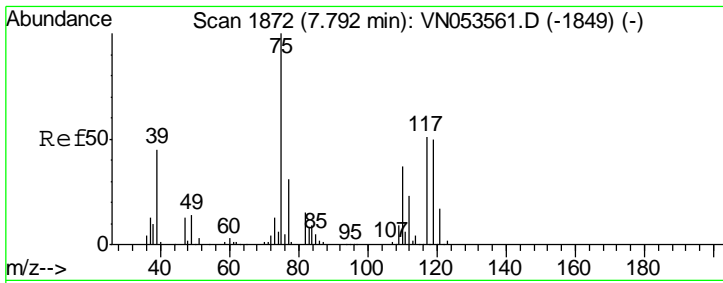


#35
 Dibromofluoromethane
 Concen: 50.262 ug/l
 RT: 7.59 min Scan# 1810
 Delta R.T. 0.00 min
 Lab File: VN053824.D
 Acq: 16 Feb 2019 2:54

Tgt Ion:113 Resp: 350944

Ion	Ratio	Lower	Upper
113	100		
111	102.0	81.1	121.7
192	23.2	18.2	27.2

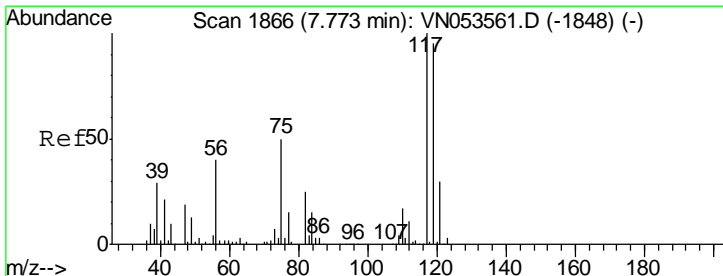
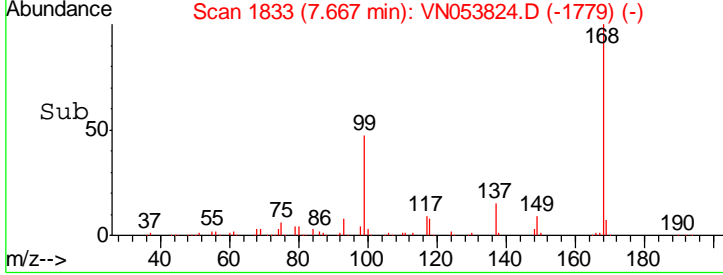
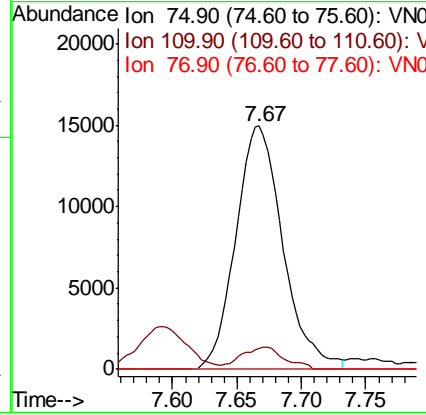
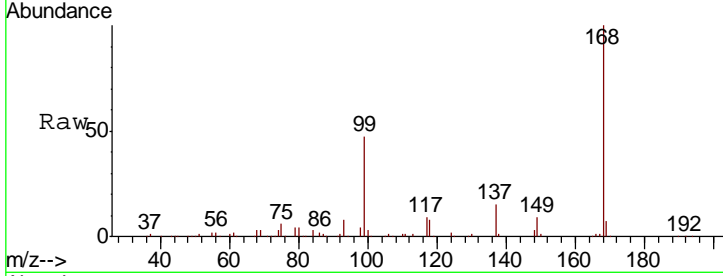




#36
 1,1-Dichloropropene
 Concen: 3.823 ug/l
 RT: 7.67 min Scan# 1833
 Delta R.T. -0.13 min
 Lab File: VN053824.D
 Acq: 16 Feb 2019 2:54

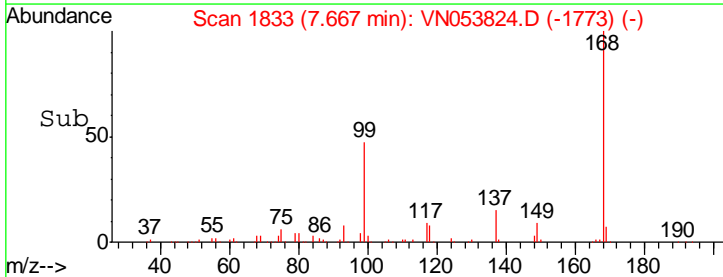
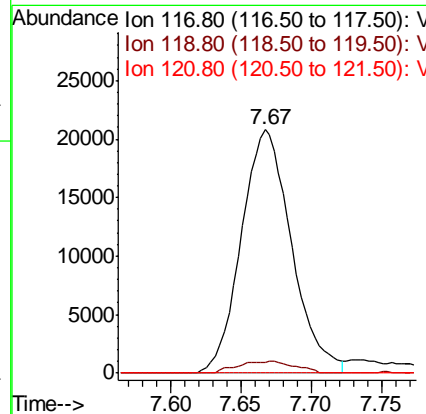
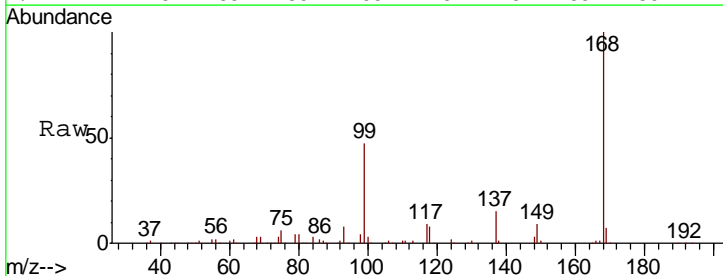
Instrument : MSVOA_N
 ClientSampleID : PB117124ZHE#09

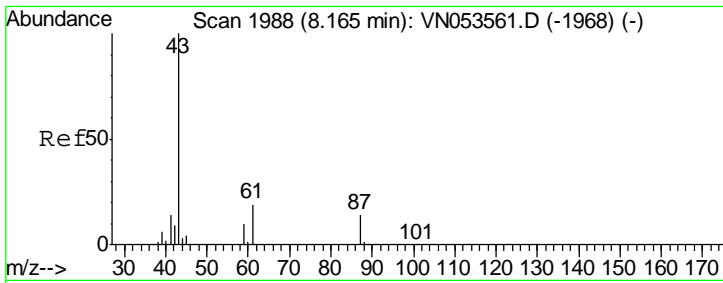
Tgt Ion	Resp	Lower	Upper
75	100		
110	8.3	18.1	54.3#
77	0.0	25.1	37.7#



#38
 Carbon Tetrachloride
 Concen: 5.163 ug/l
 RT: 7.67 min Scan# 1833
 Delta R.T. -0.11 min
 Lab File: VN053824.D
 Acq: 16 Feb 2019 2:54

Tgt Ion	Resp	Lower	Upper
117	100		
119	4.6	77.2	115.8#
121	0.0	24.6	37.0#

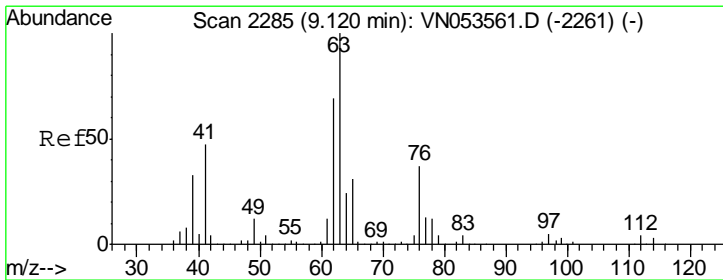
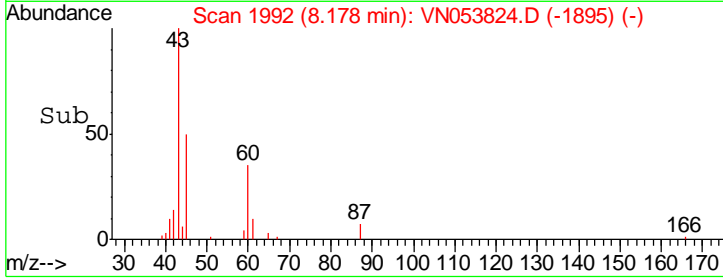
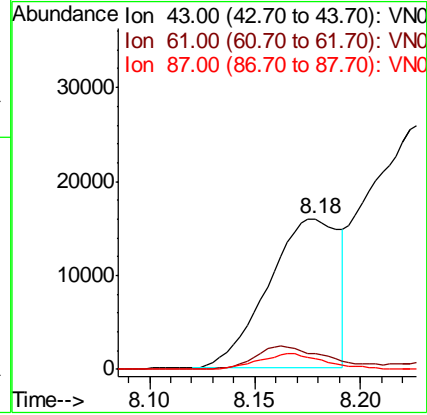
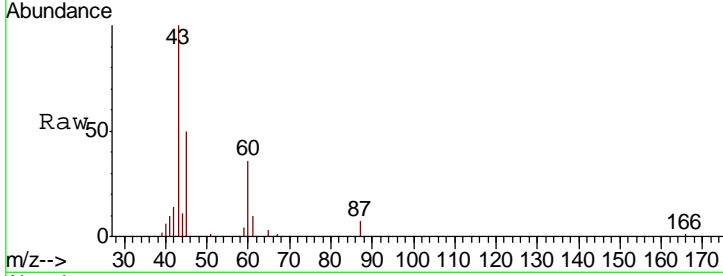




#43
 Isopropyl Acetate
 Concen: 3.460 ug/l
 RT: 8.18 min Scan# 1992
 Delta R.T. 0.01 min
 Lab File: VN053824.D
 Acq: 16 Feb 2019 2:54

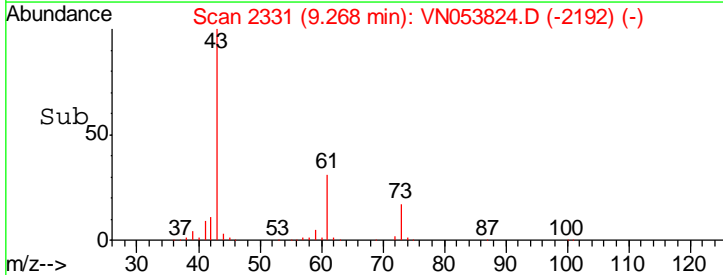
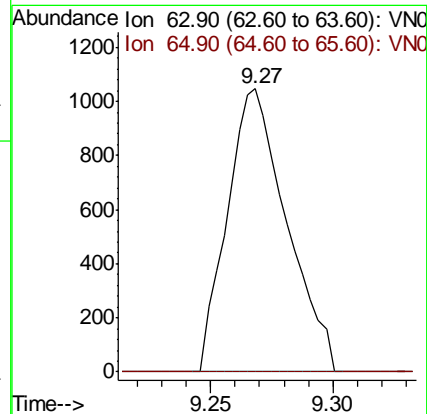
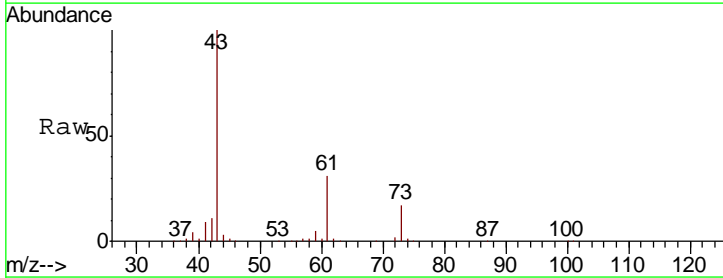
Instrument :
 MSVOA_N
 ClientSampled :
 PB117124ZHE#09

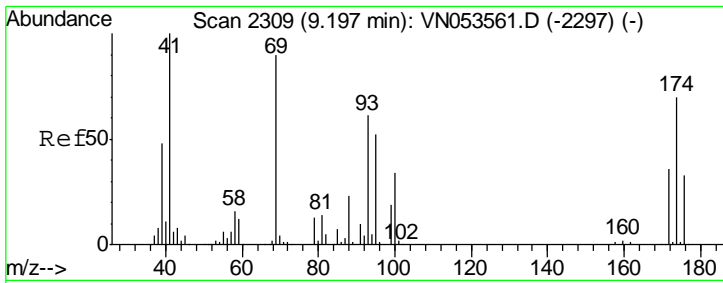
Tgt Ion	Resp	Lower	Upper
43	37175		
61	16.0	23.9	35.9#
87	9.7	11.0	16.6#



#45
 1,2-Dichloropropane
 Concen: 0.225 ug/l
 RT: 9.27 min Scan# 2331
 Delta R.T. 0.15 min
 Lab File: VN053824.D
 Acq: 16 Feb 2019 2:54

Tgt Ion	Resp	Lower	Upper
63	1767		
65	0.0	25.0	37.4#

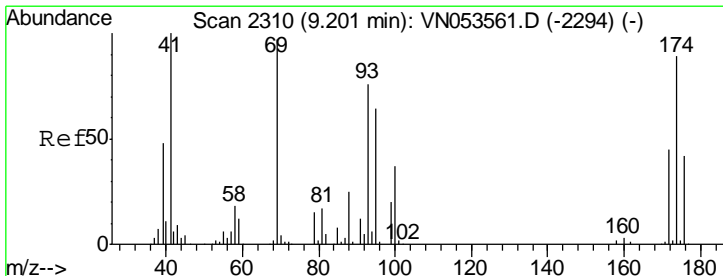
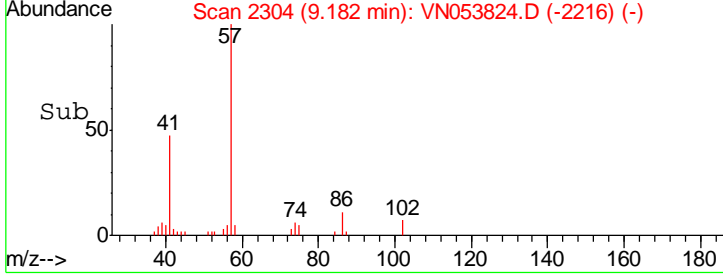
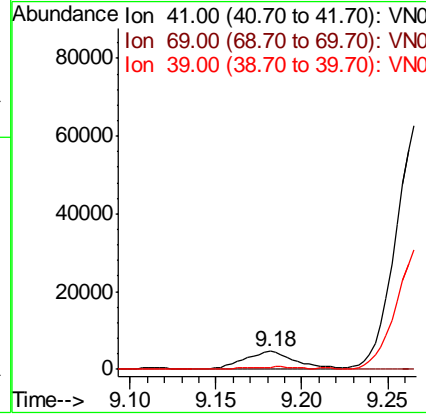
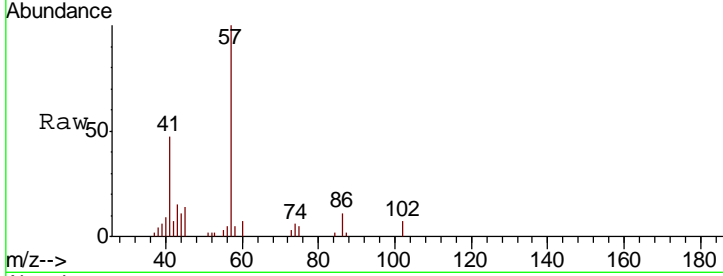




#48
 Methyl methacrylate
 Concen: 1.883 ug/l
 RT: 9.18 min Scan# 2304
 Delta R.T. -0.02 min
 Lab File: VN053824.D
 Acq: 16 Feb 2019 2:54

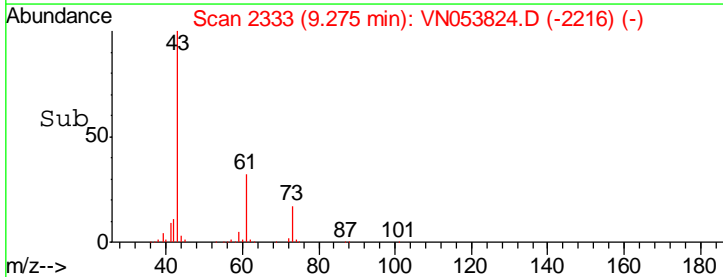
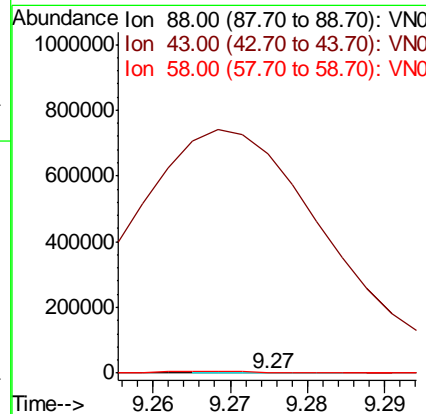
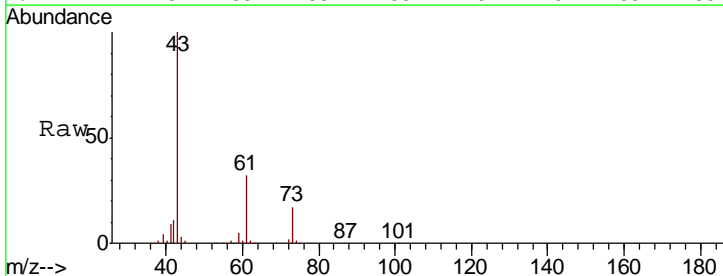
Instrument :
 MSVOA_N
 ClientSampled :
 PB117124ZHE#09

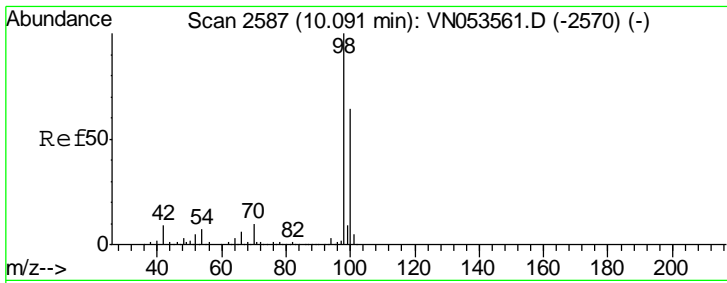
Tgt Ion	Resp	Lower	Upper
41	100		
69	0.0	73.8	110.6#
39	0.0	40.0	60.0#



#49
 1,4-Dioxane
 Concen: 40.404 ug/l
 RT: 9.27 min Scan# 2333
 Delta R.T. 0.07 min
 Lab File: VN053824.D
 Acq: 16 Feb 2019 2:54

Tgt Ion	Resp	Lower	Upper
88	100		
43	1501960.4	27.8	41.6#
58	7570.3	56.5	84.7#

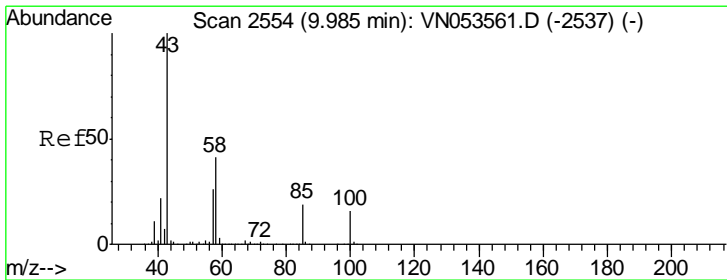
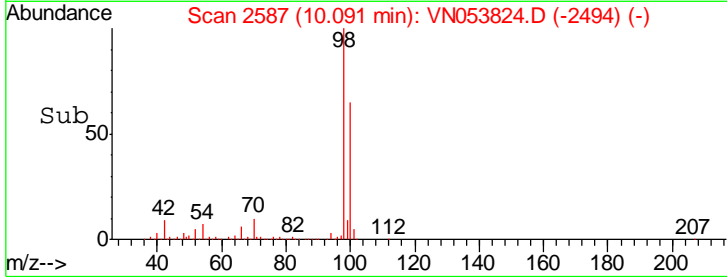
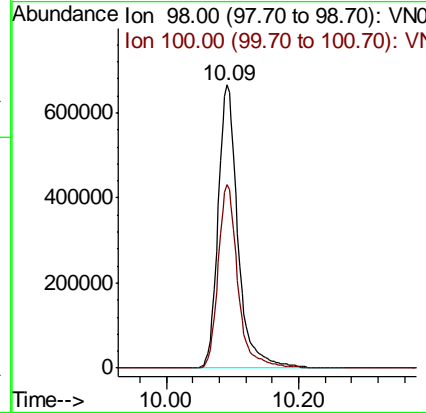
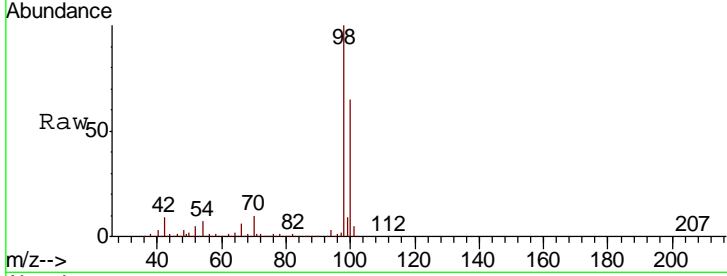




#50
 Toluene-d8
 Concen: 52.656 ug/l
 RT: 10.09 min Scan# 2587
 Delta R.T. 0.00 min
 Lab File: VN053824.D
 Acq: 16 Feb 2019 2:54

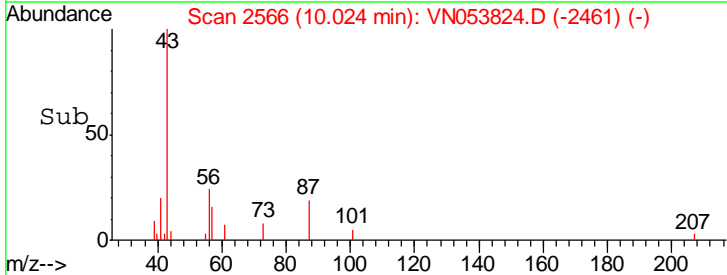
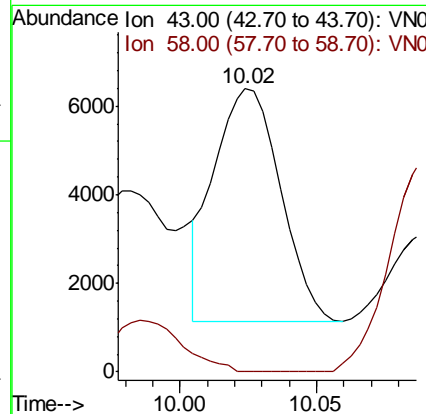
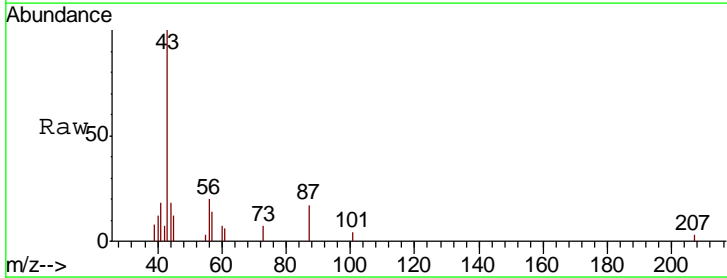
Instrument : MSVOA_N
 ClientSampled : PB117124ZHE#09

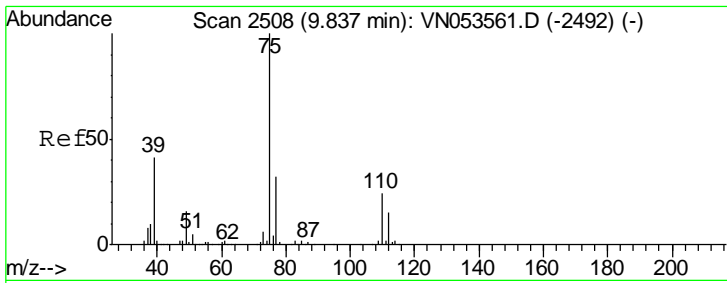
Tgt Ion: 98 Resp: 1380480
 Ion Ratio Lower Upper
 98 100
 100 64.6 51.4 77.0



#51
 4-Methyl-2-Pentanone
 Concen: 1.691 ug/l
 RT: 10.02 min Scan# 2566
 Delta R.T. 0.04 min
 Lab File: VN053824.D
 Acq: 16 Feb 2019 2:54

Tgt Ion: 43 Resp: 8928
 Ion Ratio Lower Upper
 43 100
 58 0.0 32.8 49.2#

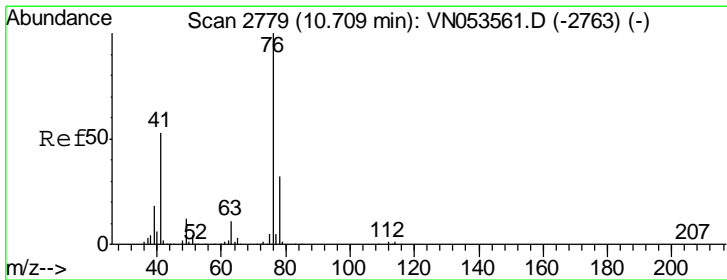
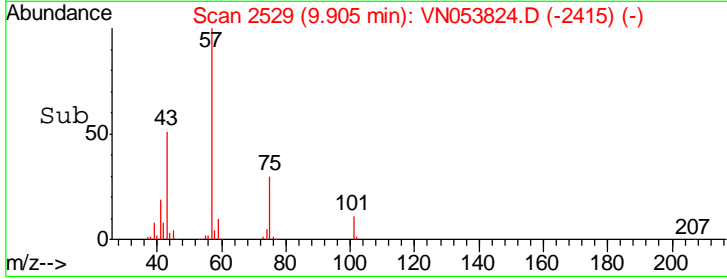
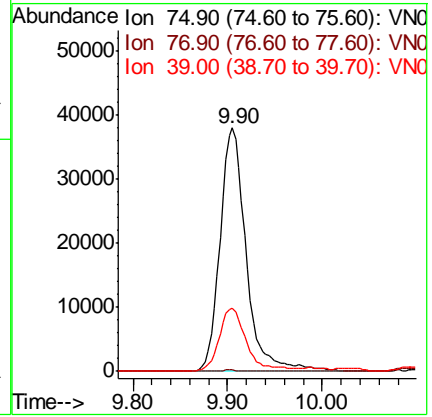
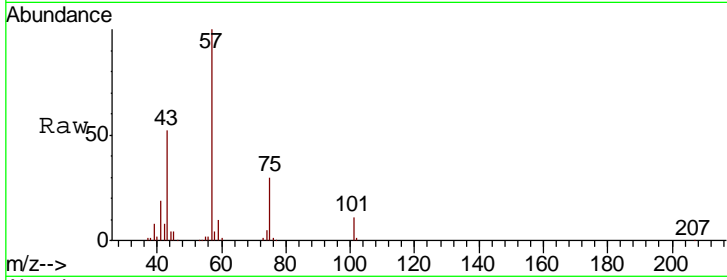




#54
 cis-1,3-Dichloropropene
 Concen: 6.242 ug/l
 RT: 9.90 min Scan# 2529
 Delta R.T. 0.07 min
 Lab File: VN053824.D
 Acq: 16 Feb 2019 2:54

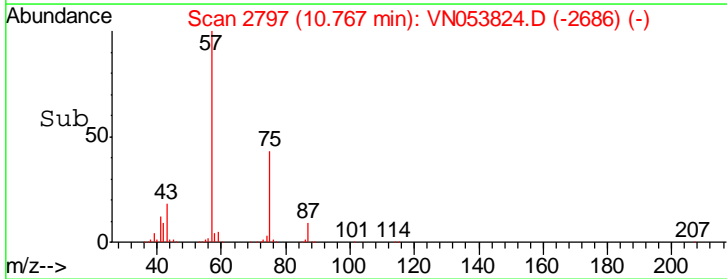
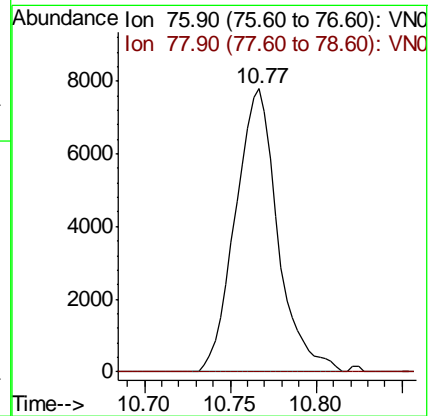
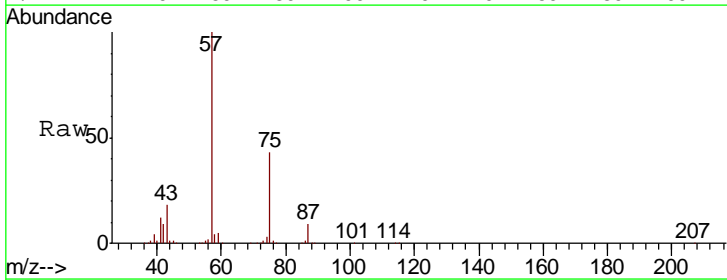
Instrument :
 MSVOA_N
 ClientSampleID :
 PB117124ZHE#09

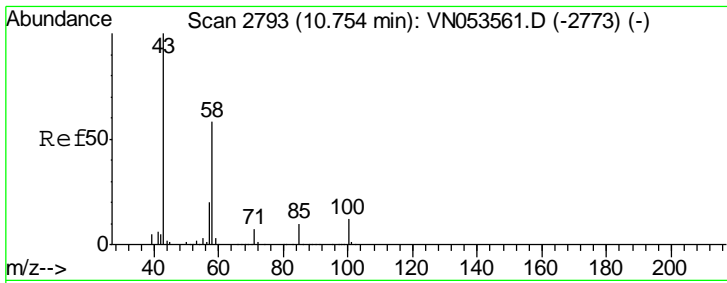
Tgt Ion	Resp	Lower	Upper
75	100		
77	0.5	25.8	38.6#
39	25.7	33.4	50.0#



#57
 1,3-Dichloropropane
 Concen: 1.189 ug/l
 RT: 10.77 min Scan# 2797
 Delta R.T. 0.06 min
 Lab File: VN053824.D
 Acq: 16 Feb 2019 2:54

Tgt Ion	Resp	Lower	Upper
76	100		
78	0.0	25.6	38.4#

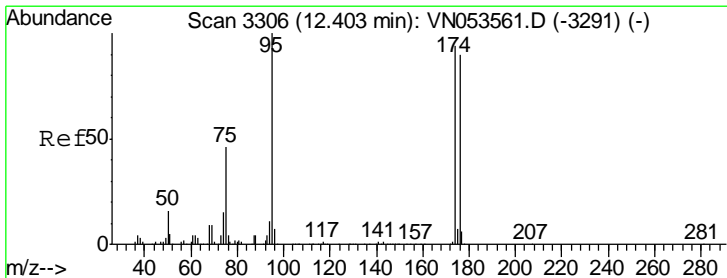
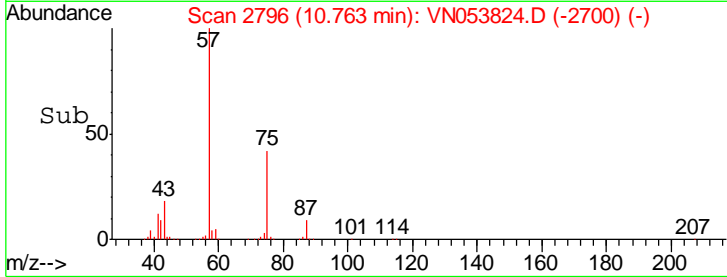
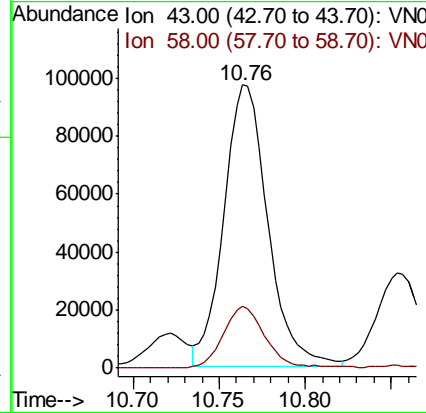
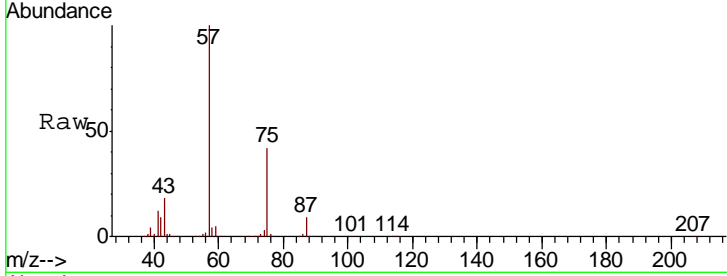




#59
 2-Hexanone
 Concen: 48.431 ug/l
 RT: 10.76 min Scan# 2796
 Delta R.T. 0.01 min
 Lab File: VN053824.D
 Acq: 16 Feb 2019 2:54

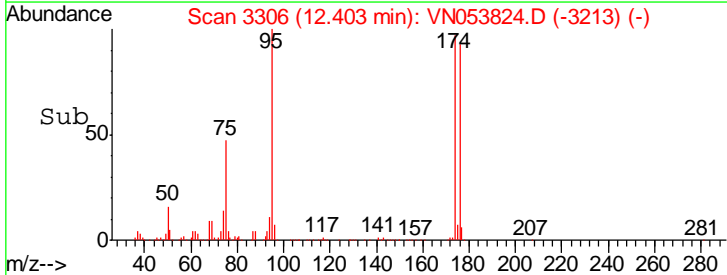
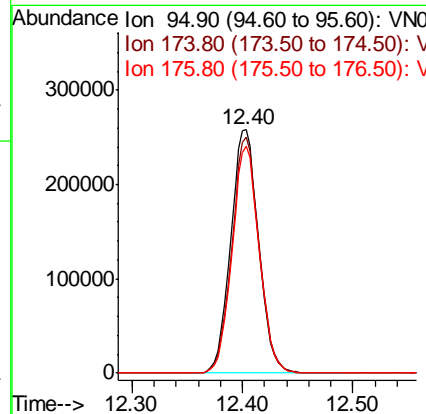
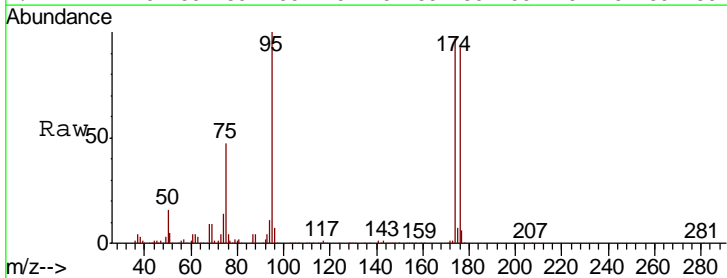
Instrument :
 MSVOA_N
 ClientSampleID :
 PB117124ZHE#09

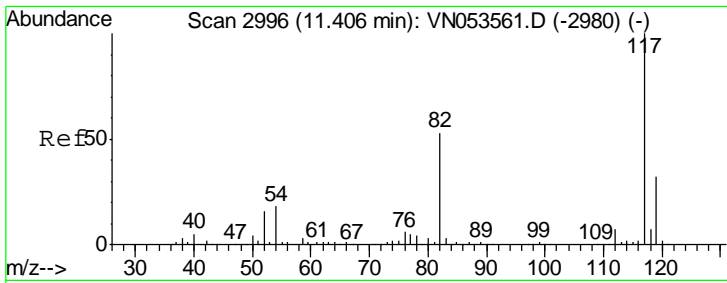
Tgt Ion: 43 Resp: 173583
 Ion Ratio Lower Upper
 43 100
 58 21.0 28.6 85.8#



#62
 4-Bromofluorobenzene
 Concen: 51.332 ug/l
 RT: 12.40 min Scan# 3306
 Delta R.T. 0.00 min
 Lab File: VN053824.D
 Acq: 16 Feb 2019 2:54

Tgt Ion: 95 Resp: 448840
 Ion Ratio Lower Upper
 95 100
 174 95.1 0.0 183.2
 176 91.3 0.0 177.4



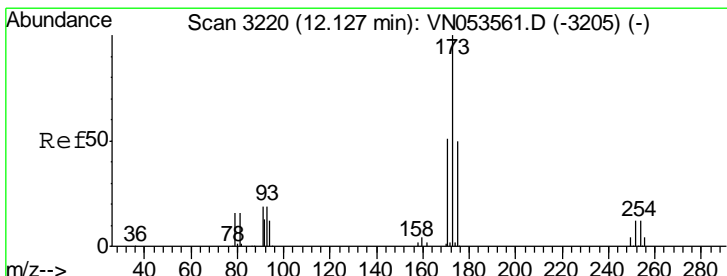
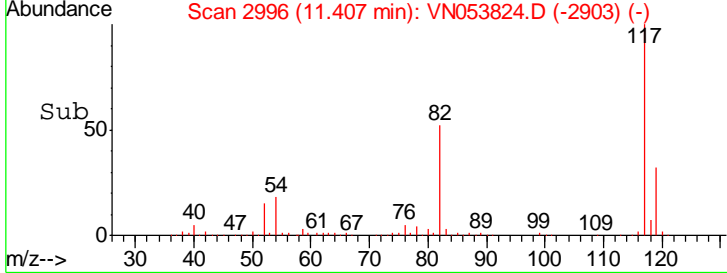
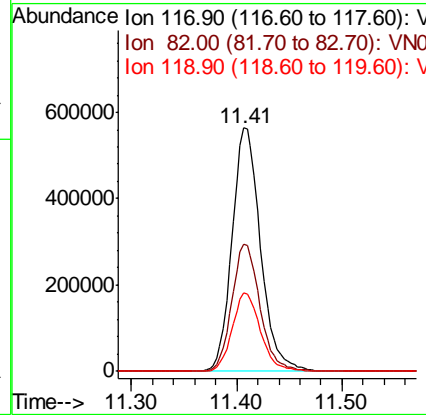
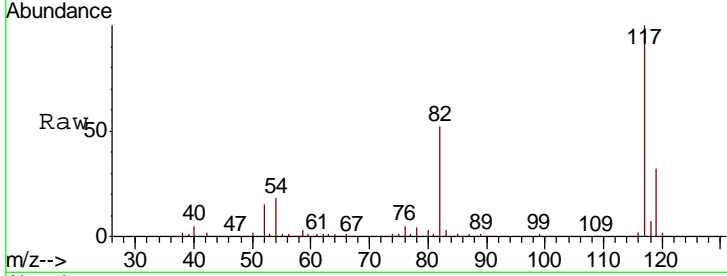


#63
 Chlorobenzene-d5
 Concen: 50.000 ug/l
 RT: 11.41 min Scan# 2996
 Delta R.T. 0.00 min
 Lab File: VN053824.D
 Acq: 16 Feb 2019 2:54

Instrument :
 MSVOA_N
 ClientSampled :
 PB117124ZHE#09

Tgt Ion: 117 Resp: 1050571

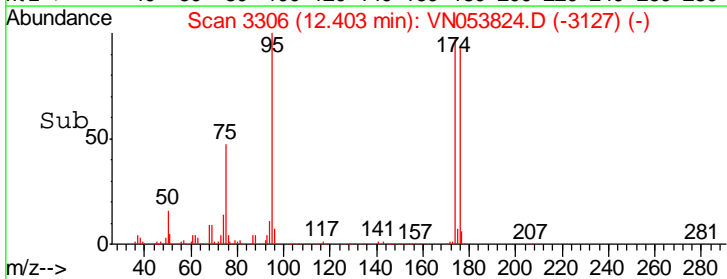
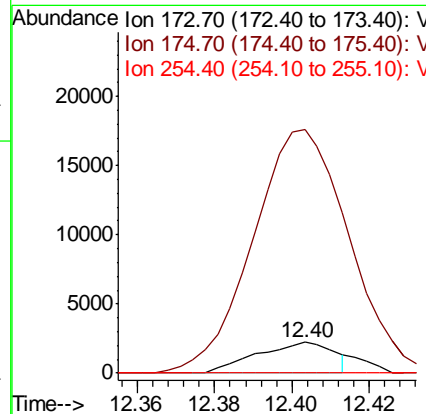
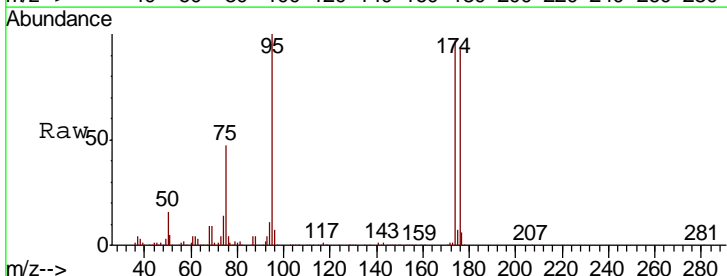
Ion	Ratio	Lower	Upper
117	100		
82	52.1	42.9	64.3
119	32.1	26.0	39.0

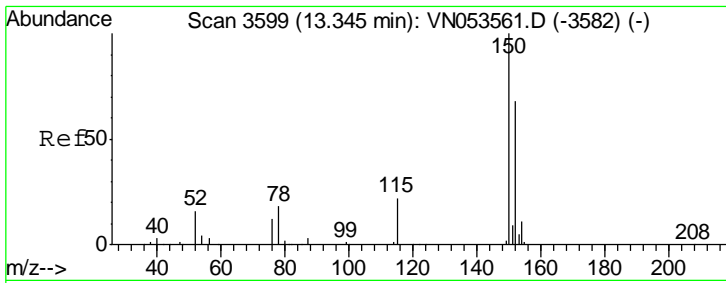


#71
 Bromoform
 Concen: 0.581 ug/l
 RT: 12.40 min Scan# 3306
 Delta R.T. 0.28 min
 Lab File: VN053824.D
 Acq: 16 Feb 2019 2:54

Tgt Ion: 173 Resp: 3103

Ion	Ratio	Lower	Upper
173	100		
175	837.2	24.6	74.0#
254	0.0	0.2	0.2#

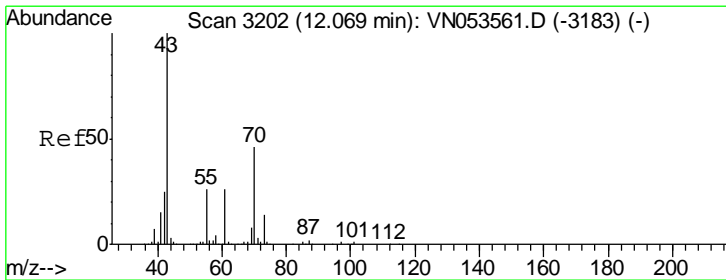
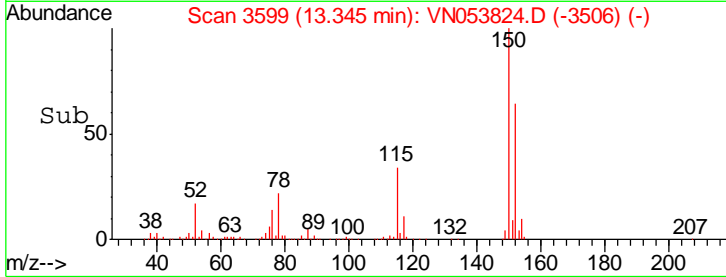
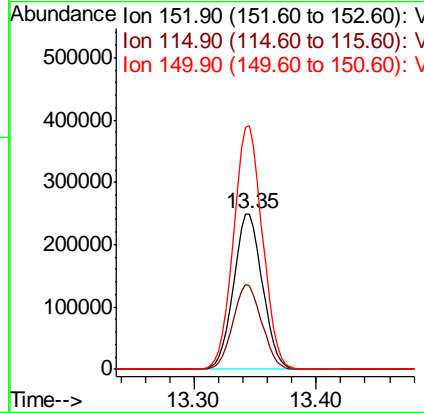
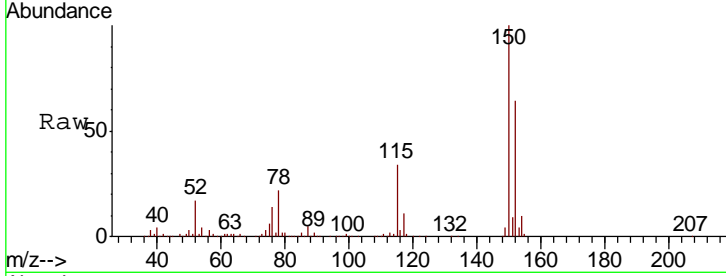




#72
 1,4-Dichlorobenzene-d4
 Concen: 50.000 ug/l
 RT: 13.35 min Scan# 3599
 Delta R.T. 0.00 min
 Lab File: VN053824.D
 Acq: 16 Feb 2019 2:54

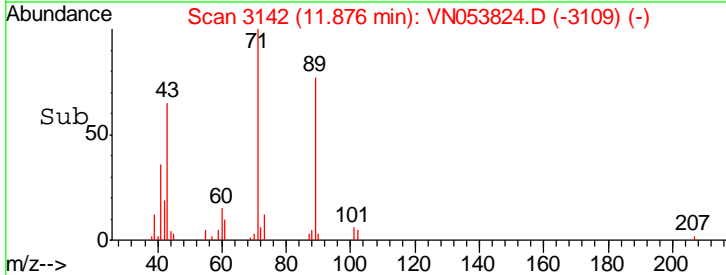
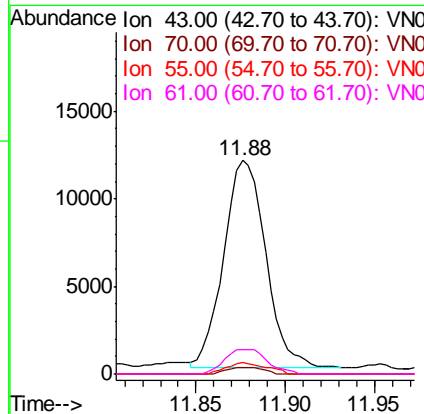
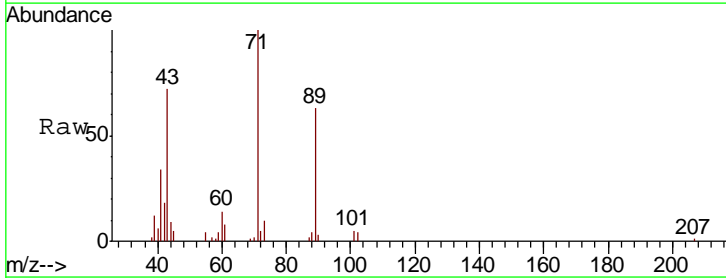
Instrument :
 MSVOA_N
 ClientSampled :
 PB117124ZHE#09

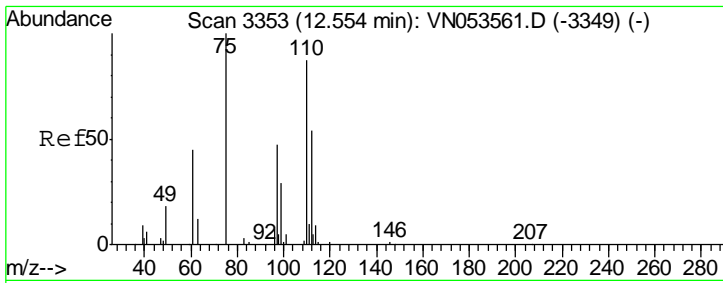
Tgt Ion	Resp	Lower	Upper
152	410388		
115	54.4	27.8	83.4
150	157.0	0.0	349.0



#74
 N-amyl acetate
 Concen: 2.792 ug/l
 RT: 11.88 min Scan# 3142
 Delta R.T. -0.19 min
 Lab File: VN053824.D
 Acq: 16 Feb 2019 2:54

Tgt Ion	Resp	Lower	Upper
43	19369		
70	2.9	35.4	53.2#
55	5.2	20.9	31.3#
61	12.2	20.5	30.7#

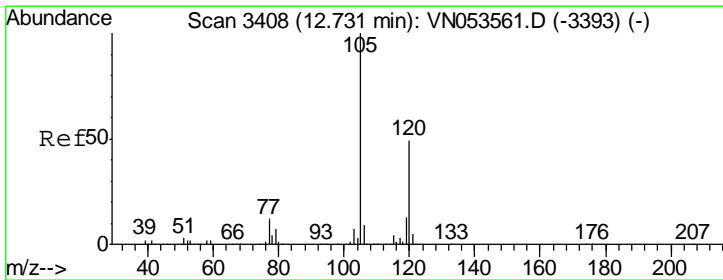
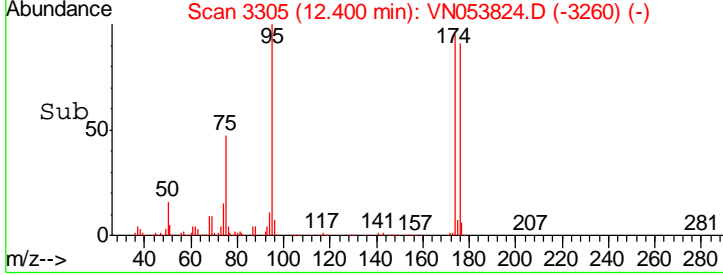
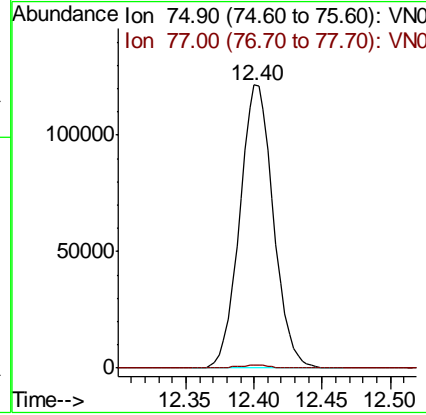
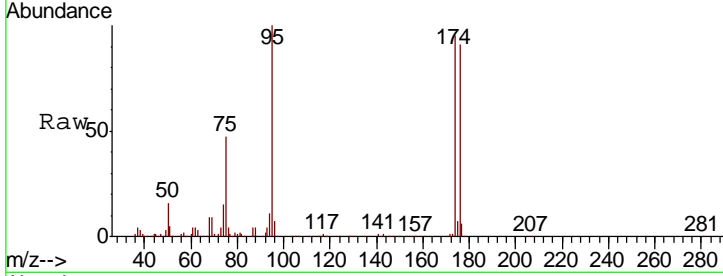




#76
 1,2,3-Trichloropropane
 Concen: 39.434 ug/l
 RT: 12.40 min Scan# 3305
 Delta R.T. -0.15 min
 Lab File: VN053824.D
 Acq: 16 Feb 2019 2:54

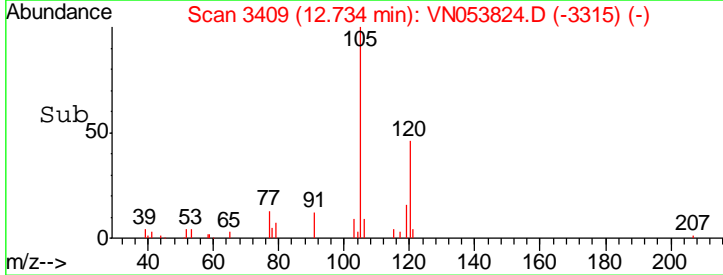
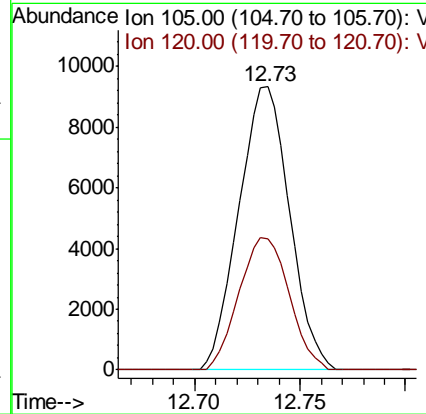
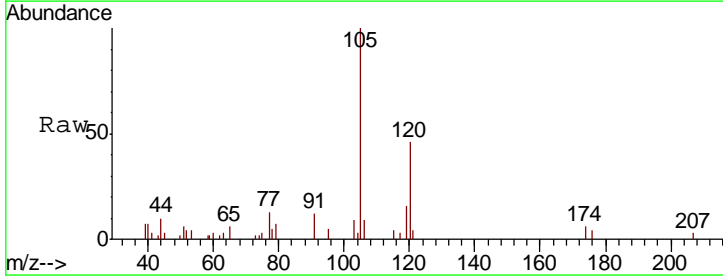
Instrument : MSVOA_N
 ClientSampled : PB117124ZHE#09

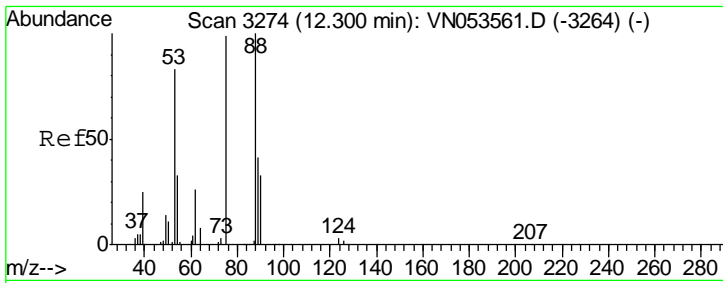
Tgt Ion: 75 Resp: 207864
 Ion Ratio Lower Upper
 75 100
 77 1.1 0.0 0.0#



#80
 1,3,5-Trimethylbenzene
 Concen: 0.653 ug/l
 RT: 12.73 min Scan# 3409
 Delta R.T. 0.00 min
 Lab File: VN053824.D
 Acq: 16 Feb 2019 2:54

Tgt Ion: 105 Resp: 15622
 Ion Ratio Lower Upper
 105 100
 120 46.1 24.9 74.6

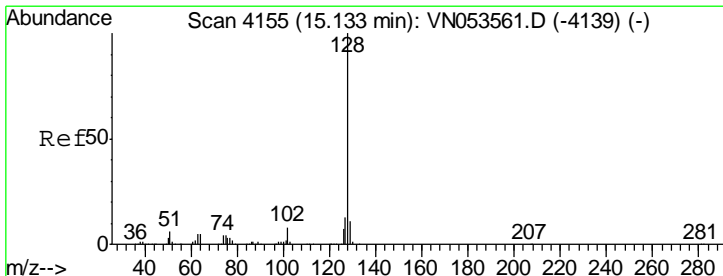
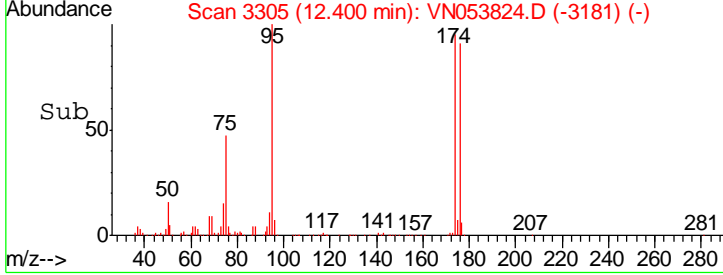
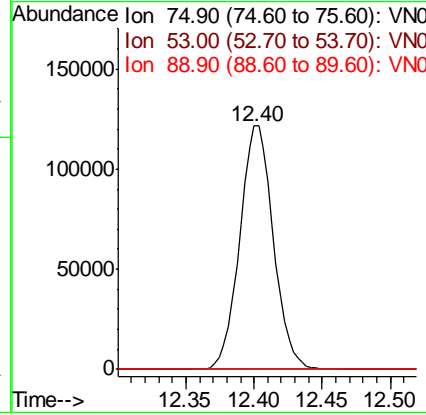
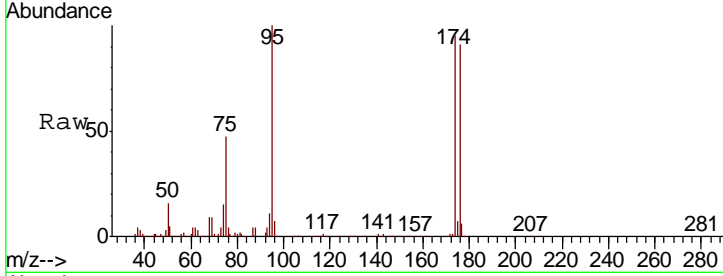




#81
 trans-1,4-Dichloro-2-butene
 Concen: 110.885 ug/l
 RT: 12.40 min Scan# 3305
 Delta R.T. 0.10 min
 Lab File: VN053824.D
 Acq: 16 Feb 2019 2:54

Instrument : MSVOA_N
 ClientSampled : PB117124ZHE#09

Tgt Ion	Resp	Lower	Upper
75	100		
53	0.0	69.8	104.6#
89	0.0	35.6	53.4#



#95
 Naphthalene
 Concen: 1.744 ug/l
 RT: 15.13 min Scan# 4155
 Delta R.T. 0.00 min
 Lab File: VN053824.D
 Acq: 16 Feb 2019 2:54

Tgt Ion	Resp	Lower	Upper
128	100		
127	0.0	10.3	15.5#
129	0.0	8.6	13.0#

