

Data Path : Z:\VOASRV\HPCHEM1\MSVOA N\DATA\VN021519\
 Data File : VN053807.D
 Acq On : 15 Feb 2019 18:25
 Operator : JC/SP
 Sample : K1346-16
 Misc : 5.00mL/MSVOA N/WATER
 ALS Vial : 19 Sample Multiplier: 1

Instrument :
 MSVOA_N
 ClientSampleId :
 CL-01-021419-E

Quant Time: Feb 16 00:11:06 2019
 Quant Method : Z:\VOASRV\HPCHEM1\MSVOA_N\METHODS\82N013019W.M
 Quant Title : SW846 8260
 QLast Update : Fri Feb 01 09:11:52 2019
 Response via : Initial Calibration

Internal Standards	R.T.	QIon	Response	Conc	Units	Dev(Min)
1) Pentafluorobenzene	7.67	168	657921	50.00	ug/l	0.00
34) 1,4-Difluorobenzene	8.59	114	1122833	50.00	ug/l	0.00
63) Chlorobenzene-d5	11.41	117	1135578	50.00	ug/l	0.00
72) 1,4-Dichlorobenzene-d4	13.35	152	423424	50.00	ug/l	0.00

System Monitoring Compounds

33) 1,2-Dichloroethane-d4	8.03	65	356161	53.96	ug/l	0.00
Spiked Amount	50.000		Recovery	=	107.92%	
35) Dibromofluoromethane	7.59	113	354782	50.01	ug/l	0.00
Spiked Amount	50.000		Recovery	=	100.02%	
50) Toluene-d8	10.09	98	1451205	54.48	ug/l	0.00
Spiked Amount	50.000		Recovery	=	108.96%	
62) 4-Bromofluorobenzene	12.40	95	478552	53.86	ug/l	0.00
Spiked Amount	50.000		Recovery	=	107.72%	

Target Compounds

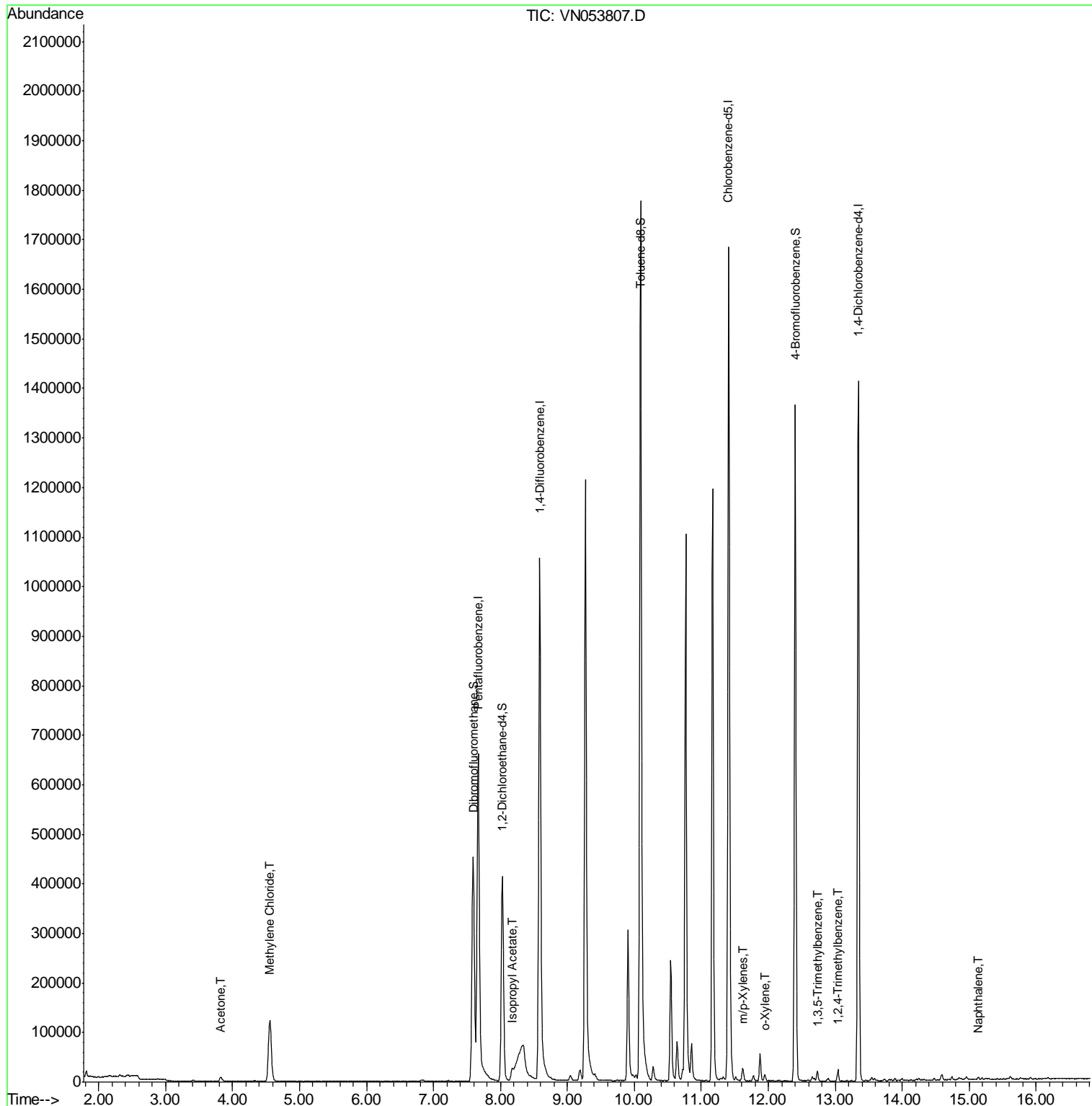
					Qvalue	
16) Acetone	3.82	43	15769	9.314	ug/l	96
20) Methylene Chloride	4.56	84	99876	14.062	ug/l	96
43) Isopropyl Acetate	8.18	43	32671	2.993	ug/l #	79
68) m/p-Xylenes	11.62	106	8942	0.591	ug/l	97
69) o-Xylene	11.95	106	3700	0.253	ug/l	96
80) 1,3,5-Trimethylbenzene	12.73	105	9696	0.393	ug/l	97
84) 1,2,4-Trimethylbenzene	13.04	105	14250	0.567	ug/l	96
95) Naphthalene	15.14	128	3886	1.938	ug/l #	87

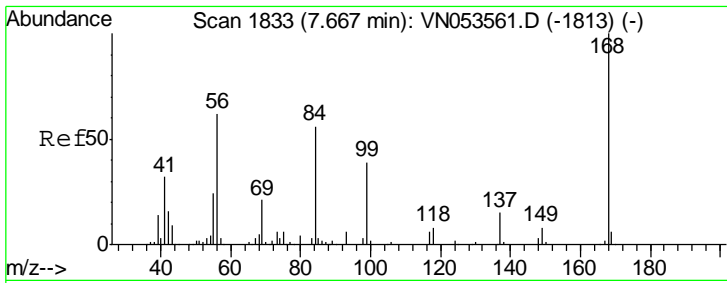
(#) = qualifier out of range (m) = manual integration (+) = signals summed

Data Path : Z:\VOASRV\HPCHEM1\MSVOA N\DATA\VN021519\
 Data File : VN053807.D
 Acq On : 15 Feb 2019 18:25
 Operator : JC/SP
 Sample : K1346-16
 Misc : 5.00mL/MSVOA N/WATER
 ALS Vial : 19 Sample Multiplier: 1

Instrument :
 MSVOA_N
 ClientSampleId :
 CL-01-021419-E

Quant Time: Feb 16 00:11:06 2019
 Quant Method : Z:\VOASRV\HPCHEM1\MSVOA_N\METHODS\82N013019W.M
 Quant Title : SW846 8260
 QLast Update : Fri Feb 01 09:11:52 2019
 Response via : Initial Calibration

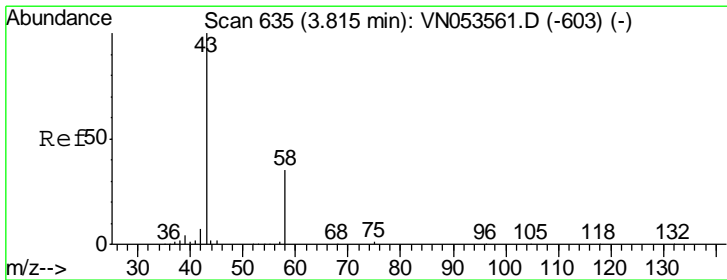
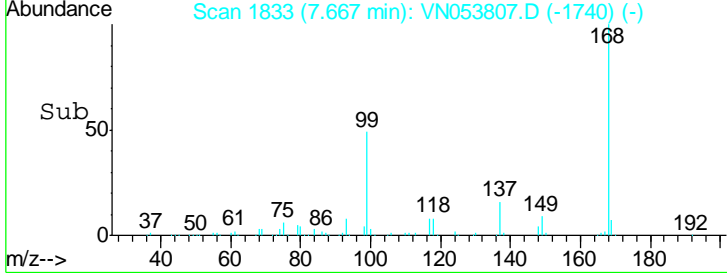
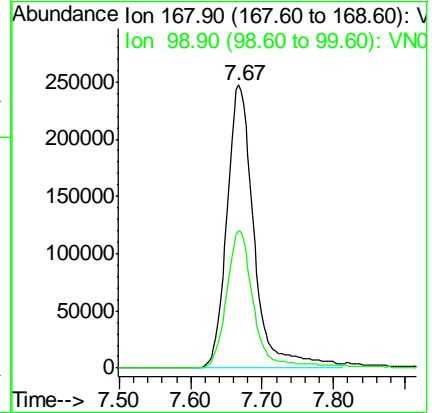
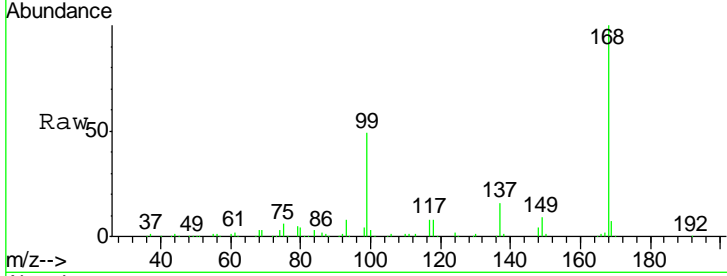




#1
 Pentafluorobenzene
 Concen: 50.000 ug/l
 RT: 7.67 min Scan# 1833
 Delta R.T. 0.00 min
 Lab File: VN053807.D
 Acq: 15 Feb 2019 18:25

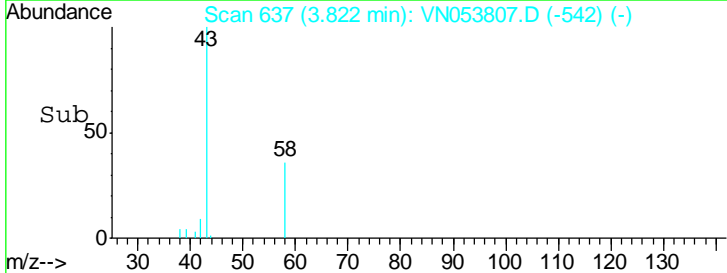
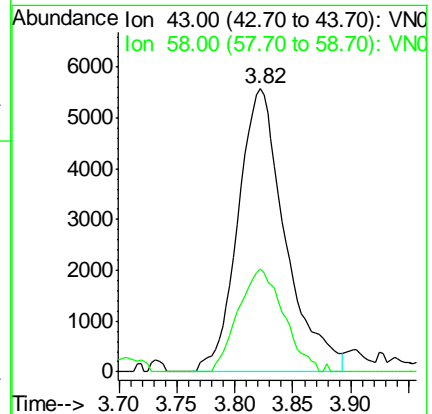
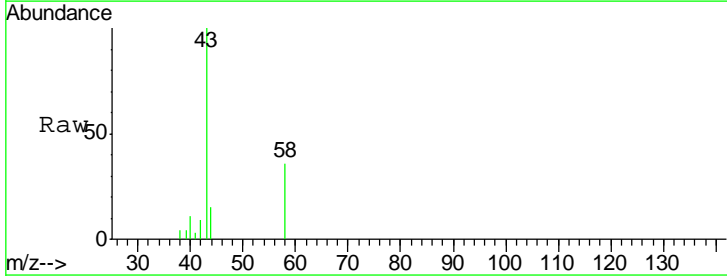
Instrument :
 MSVOA_N
 ClientSampled :
 CL-01-021419-E

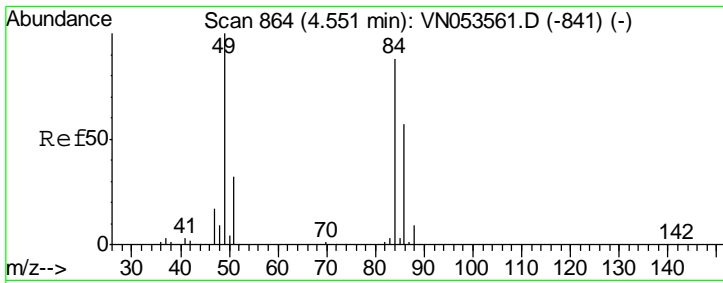
Tgt Ion: 168 Resp: 657921
 Ion Ratio Lower Upper
 168 100
 99 48.7 39.1 58.7



#16
 Acetone
 Concen: 9.314 ug/l
 RT: 3.82 min Scan# 637
 Delta R.T. 0.01 min
 Lab File: VN053807.D
 Acq: 15 Feb 2019 18:25

Tgt Ion: 43 Resp: 15769
 Ion Ratio Lower Upper
 43 100
 58 36.4 27.1 40.7

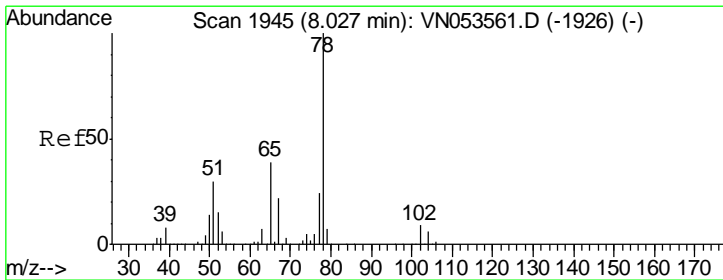
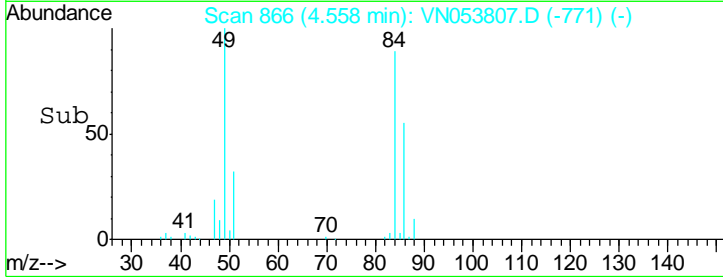
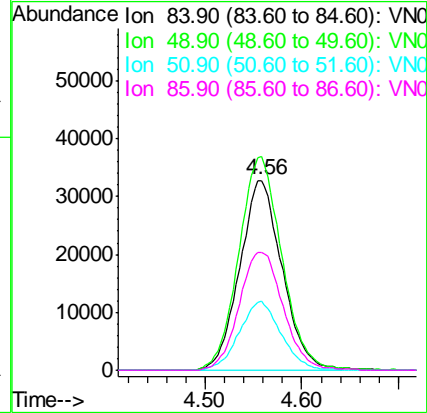
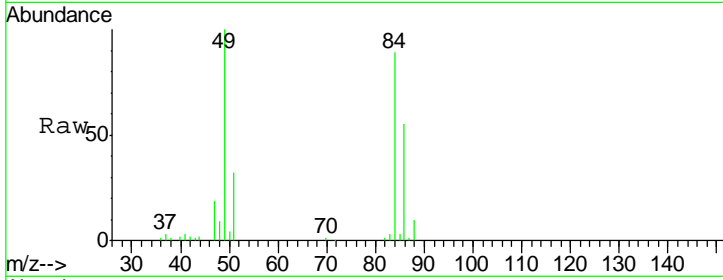




#20
 Methylene Chloride
 Concen: 14.062 ug/l
 RT: 4.56 min Scan# 866
 Delta R.T. 0.01 min
 Lab File: VN053807.D
 Acq: 15 Feb 2019 18:25

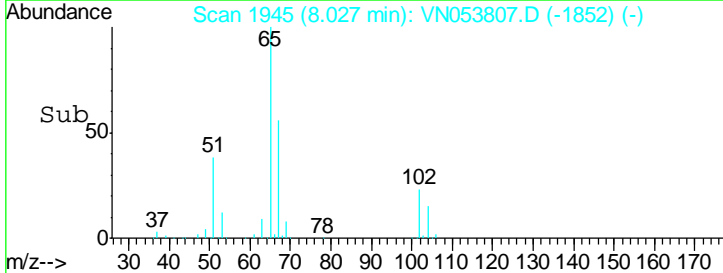
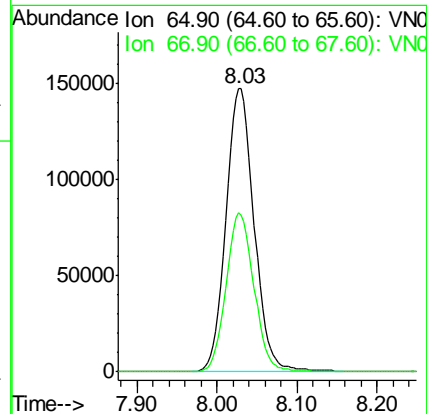
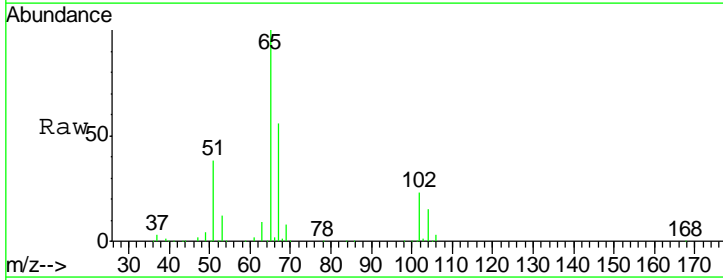
Instrument :
 MSVOA_N
 ClientSampled :
 CL-01-021419-E

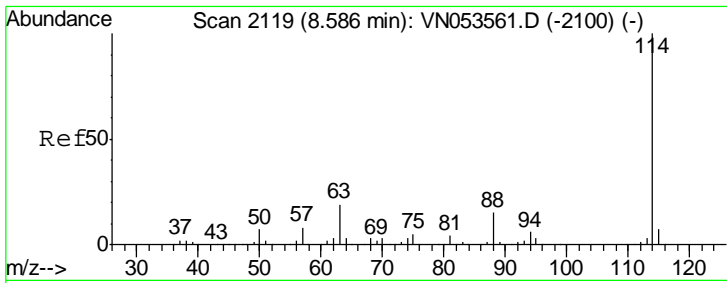
Tgt Ion	Resp	Lower	Upper
84	100		
49	112.5	94.3	141.5
51	36.1	29.4	44.2
86	62.2	51.4	77.0



#33
 1,2-Dichloroethane-d4
 Concen: 53.962 ug/l
 RT: 8.03 min Scan# 1945
 Delta R.T. 0.00 min
 Lab File: VN053807.D
 Acq: 15 Feb 2019 18:25

Tgt Ion	Resp	Lower	Upper
65	100		
67	55.1	0.0	111.2



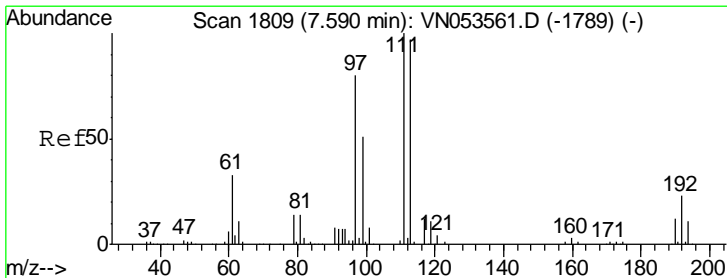
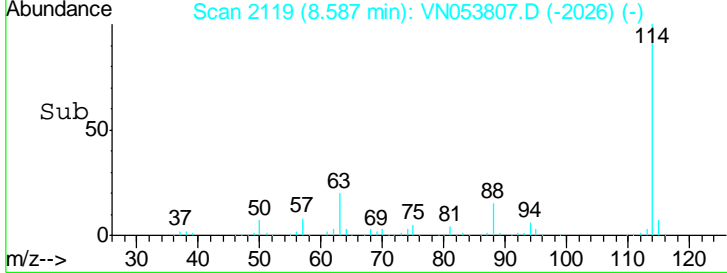
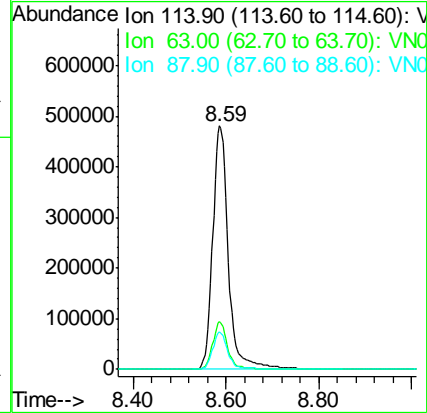
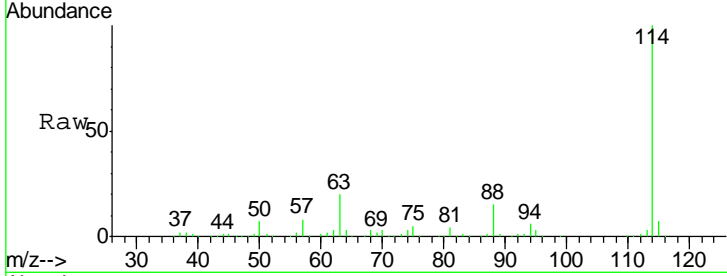


#34
 1,4-Difluorobenzene
 Concen: 50.000 ug/l
 RT: 8.59 min Scan# 2119
 Delta R.T. 0.00 min
 Lab File: VN053807.D
 Acq: 15 Feb 2019 18:25

Instrument :
 MSVOA_N
 ClientSampled :
 CL-01-021419-E

Tot Ion:114 Resp: 1122833

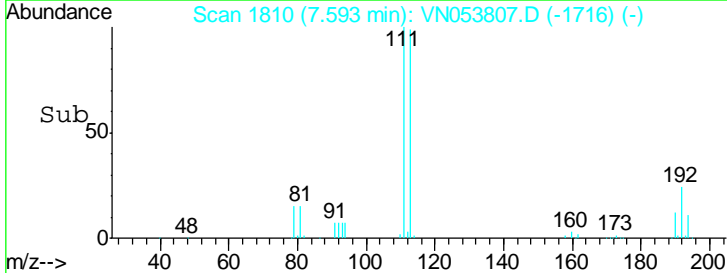
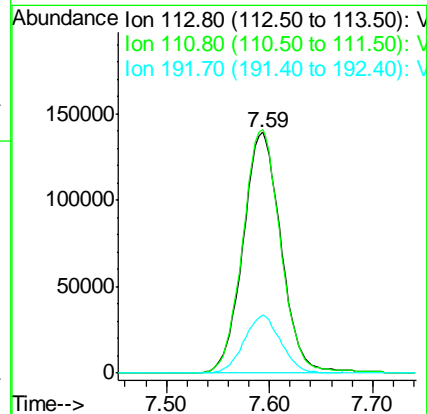
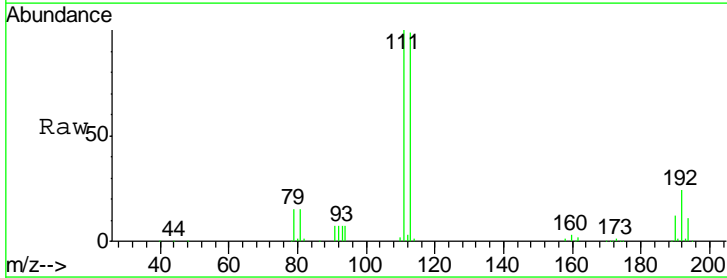
Ion	Ratio	Lower	Upper
114	100		
63	19.6	0.0	38.6
88	15.4	0.0	30.4

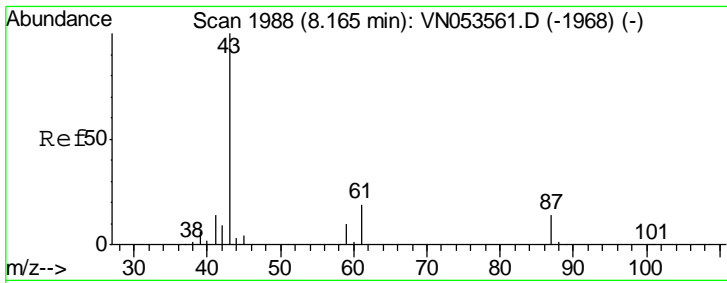


#35
 Dibromofluoromethane
 Concen: 50.006 ug/l
 RT: 7.59 min Scan# 1810
 Delta R.T. 0.00 min
 Lab File: VN053807.D
 Acq: 15 Feb 2019 18:25

Tgt Ion:113 Resp: 354782

Ion	Ratio	Lower	Upper
113	100		
111	101.9	81.1	121.7
192	23.4	18.2	27.2

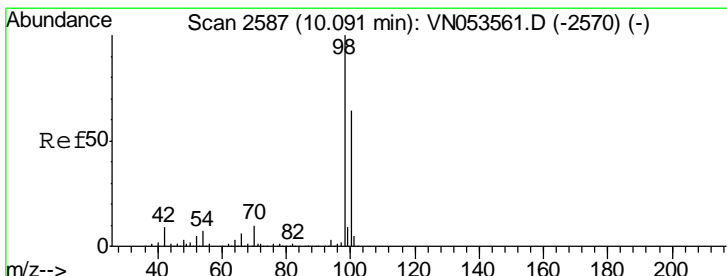
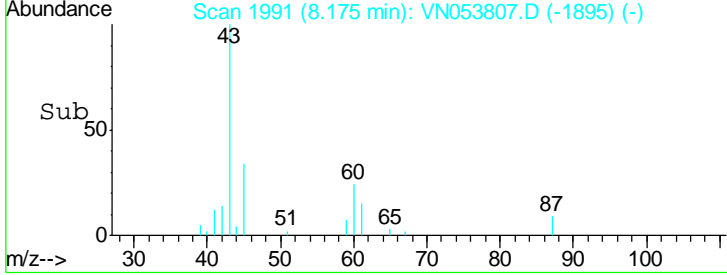
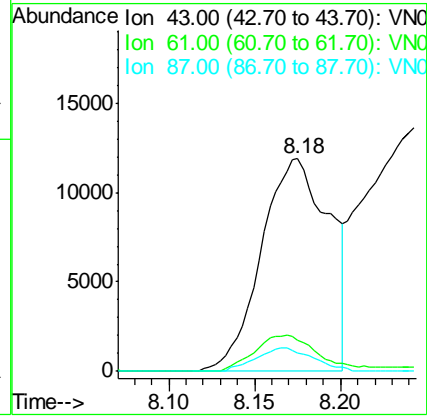
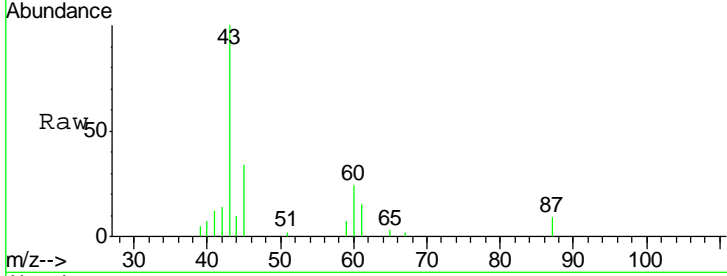




#43
 Isopropyl Acetate
 Concen: 2.993 ug/l
 RT: 8.18 min Scan# 1991
 Delta R.T. 0.01 min
 Lab File: VN053807.D
 Acq: 15 Feb 2019 18:25

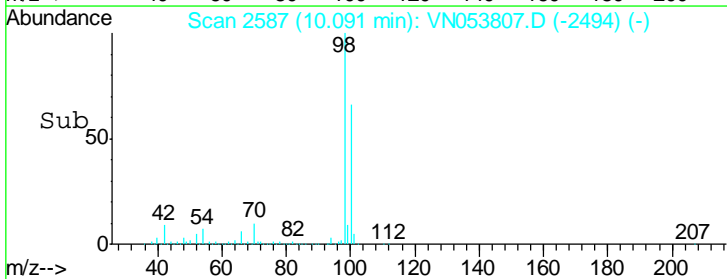
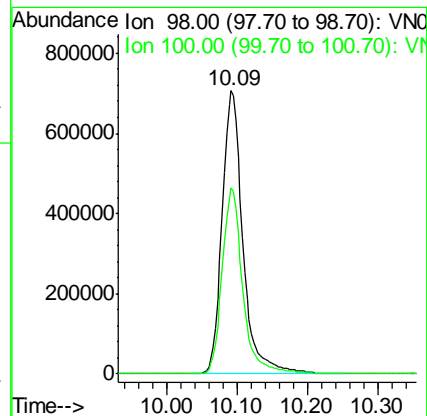
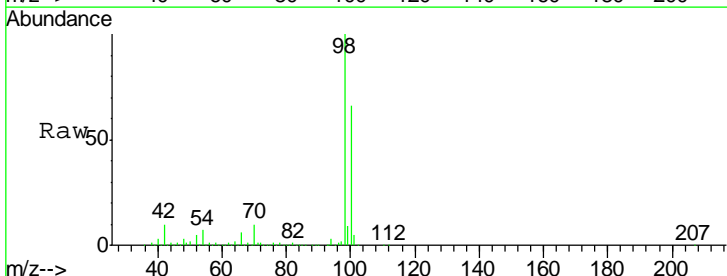
Instrument :
 MSVOA_N
ClientSampled :
 CL-01-021419-E

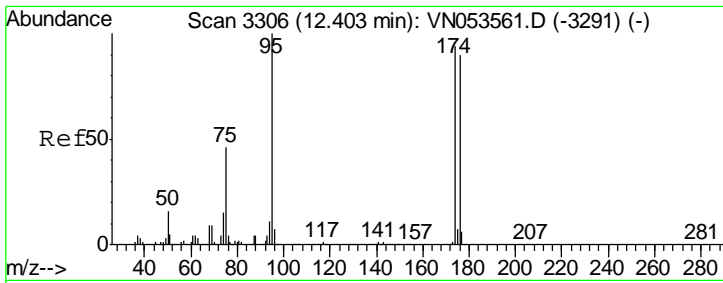
Tgt Ion	Resp	Lower	Upper
43	32671		
61	15.9	23.9	35.9#
87	9.4	11.0	16.6#



#50
 Toluene-d8
 Concen: 54.475 ug/l
 RT: 10.09 min Scan# 2587
 Delta R.T. 0.00 min
 Lab File: VN053807.D
 Acq: 15 Feb 2019 18:25

Tgt Ion	Resp	Lower	Upper
98	1451205		
100	65.0	51.4	77.0

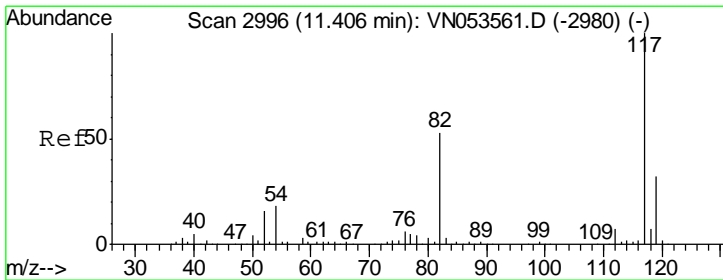
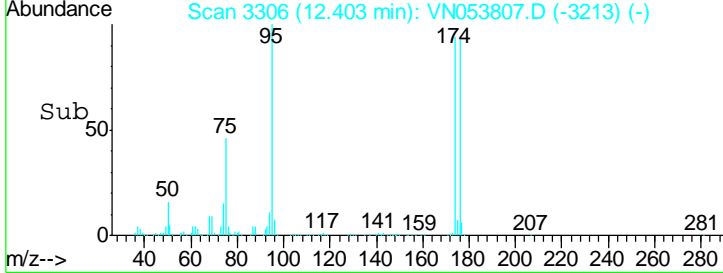
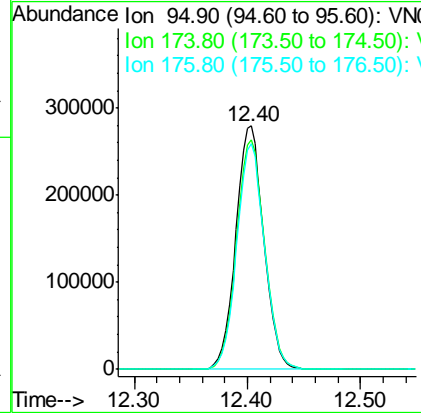
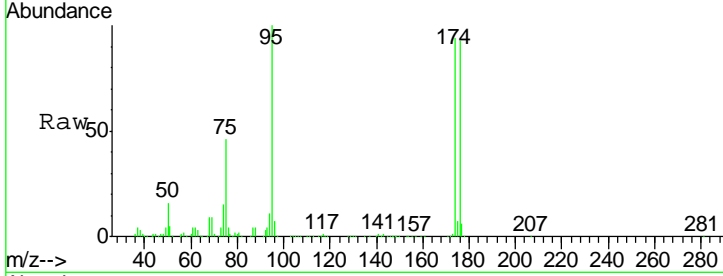




#62
 4-Bromofluorobenzene
 Concen: 53.862 ug/l
 RT: 12.40 min Scan# 3306
 Delta R.T. 0.00 min
 Lab File: VN053807.D
 Acq: 15 Feb 2019 18:25

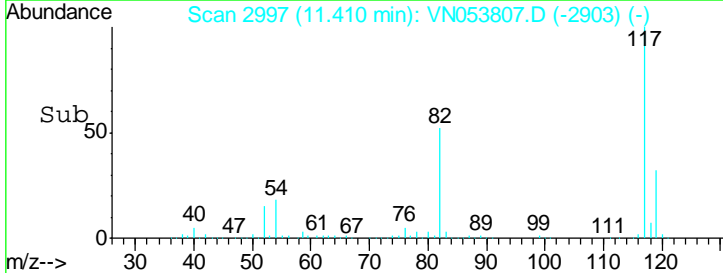
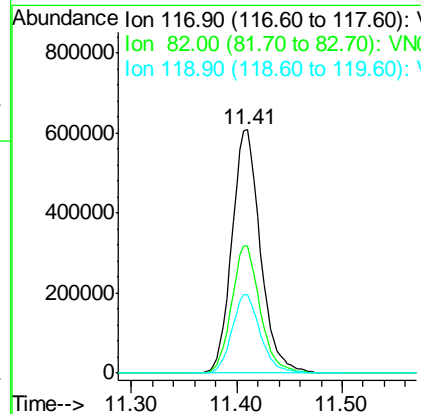
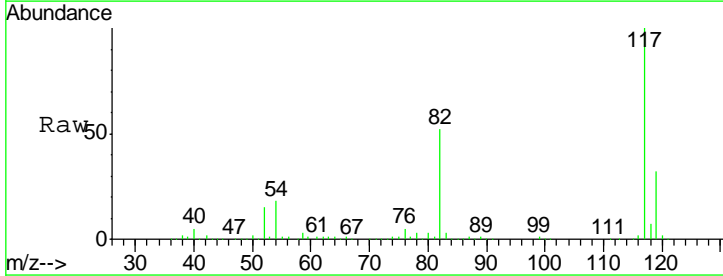
Instrument :
 MSVOA_N
 ClientSampled :
 CL-01-021419-E

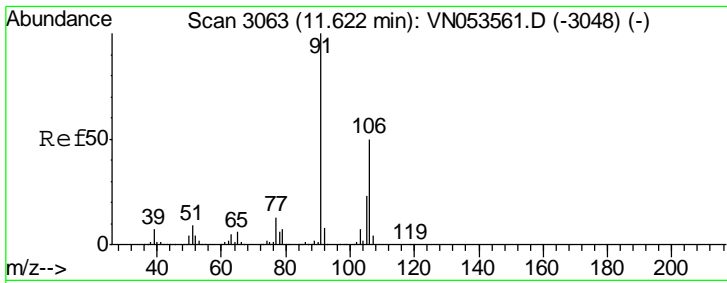
Tgt Ion	Resp	Lower	Upper
95	478552		
174	95.0	0.0	183.2
176	92.0	0.0	177.4



#63
 Chlorobenzene-d5
 Concen: 50.000 ug/l
 RT: 11.41 min Scan# 2997
 Delta R.T. 0.00 min
 Lab File: VN053807.D
 Acq: 15 Feb 2019 18:25

Tgt Ion	Resp	Lower	Upper
117	1135578		
82	52.1	42.9	64.3
119	32.1	26.0	39.0

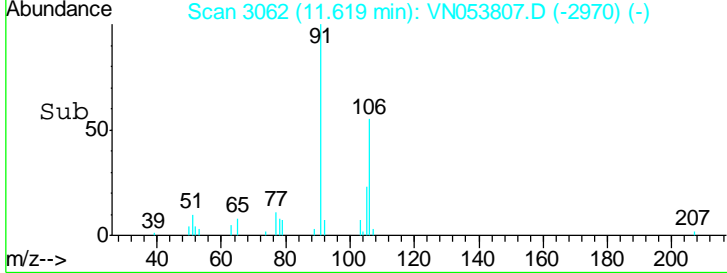
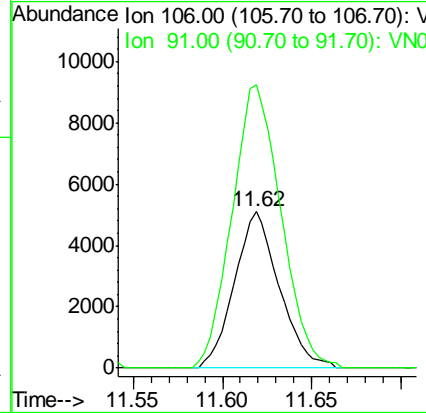
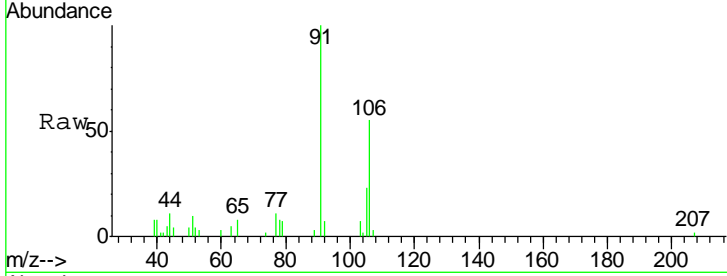




#68
 m/p-Xylenes
 Concen: 0.591 ug/l
 RT: 11.62 min Scan# 3062
 Delta R.T. -0.00 min
 Lab File: VN053807.D
 Acq: 15 Feb 2019 18:25

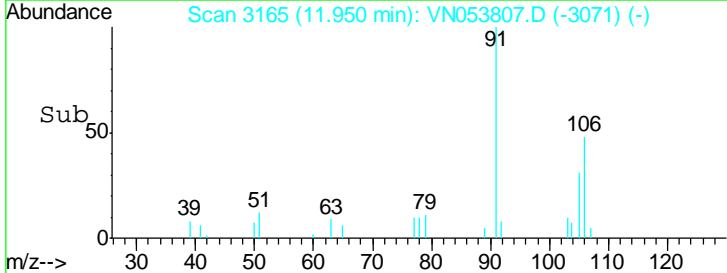
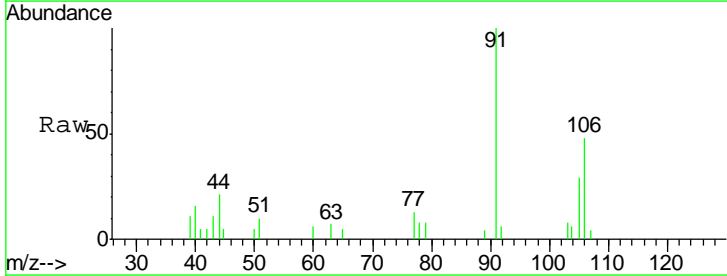
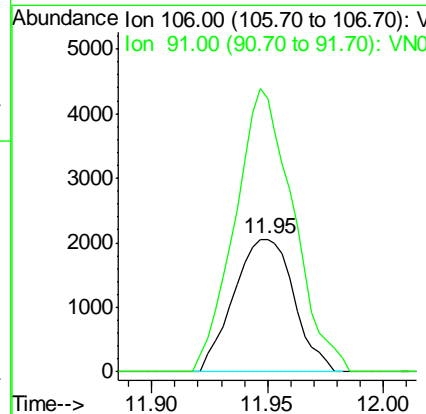
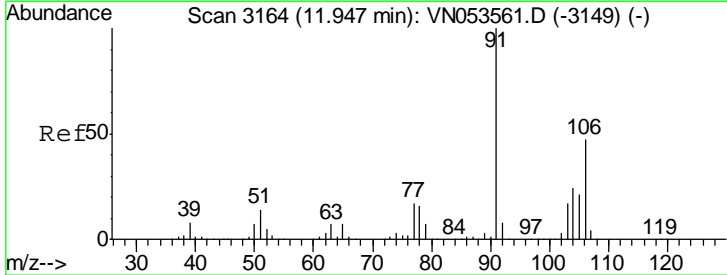
Instrument :
 MSVOA_N
ClientSampled :
 CL-01-021419-E

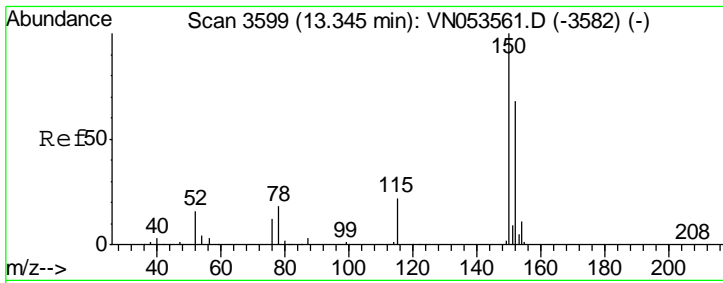
Tgt Ion:106 Resp: 8942
 Ion Ratio Lower Upper
 106 100
 91 197.8 161.4 242.2



#69
 o-Xylene
 Concen: 0.253 ug/l
 RT: 11.95 min Scan# 3165
 Delta R.T. 0.00 min
 Lab File: VN053807.D
 Acq: 15 Feb 2019 18:25

Tgt Ion:106 Resp: 3700
 Ion Ratio Lower Upper
 106 100
 91 207.2 106.9 320.8

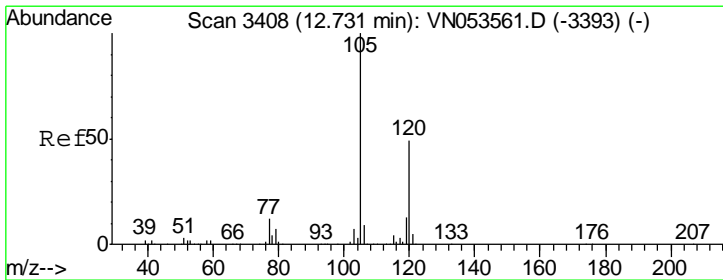
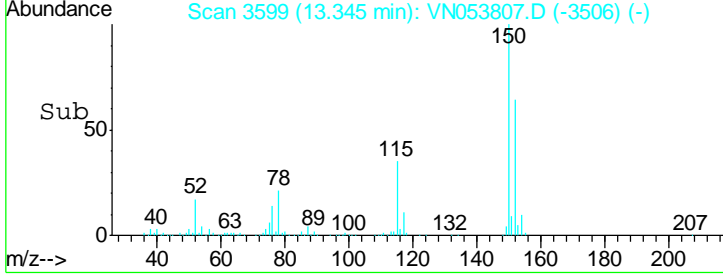
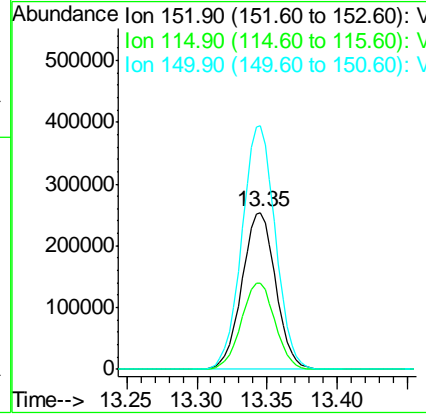
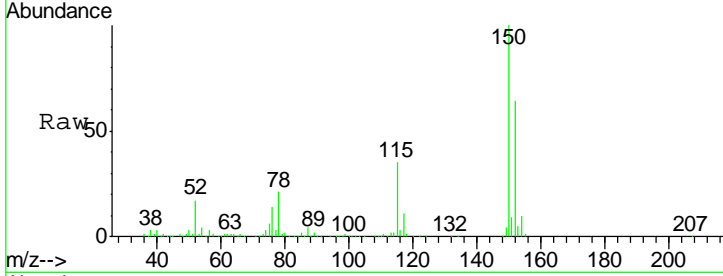




#72
 1,4-Dichlorobenzene-d4
 Concen: 50.000 ug/l
 RT: 13.35 min Scan# 3599
 Delta R.T. 0.00 min
 Lab File: VN053807.D
 Acq: 15 Feb 2019 18:25

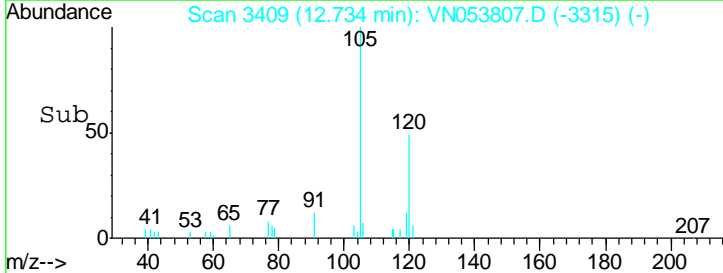
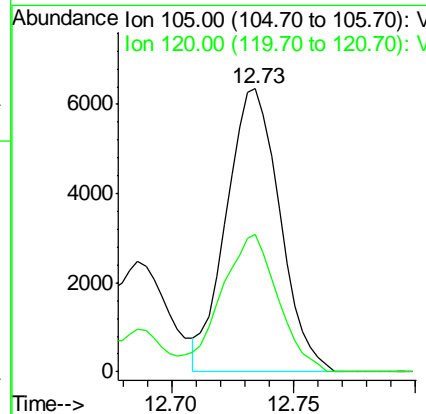
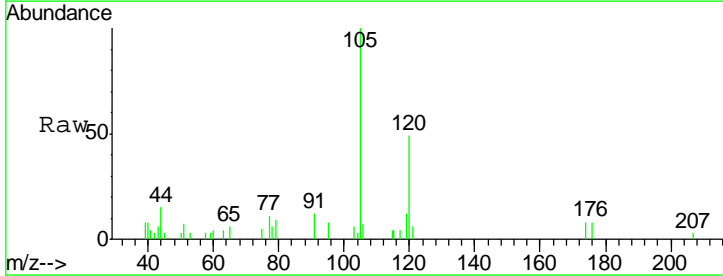
Instrument :
 MSVOA_N
 ClientSampled :
 CL-01-021419-E

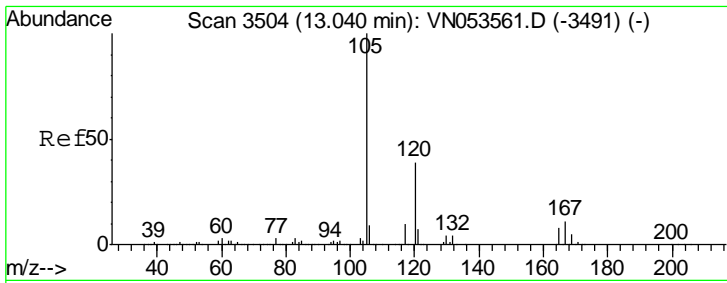
Tgt Ion	Resp	Lower	Upper
152	100		
115	55.4	27.8	83.4
150	155.0	0.0	349.0



#80
 1,3,5-Trimethylbenzene
 Concen: 0.393 ug/l
 RT: 12.73 min Scan# 3409
 Delta R.T. 0.00 min
 Lab File: VN053807.D
 Acq: 15 Feb 2019 18:25

Tgt Ion	Resp	Lower	Upper
105	100		
120	51.9	24.9	74.6

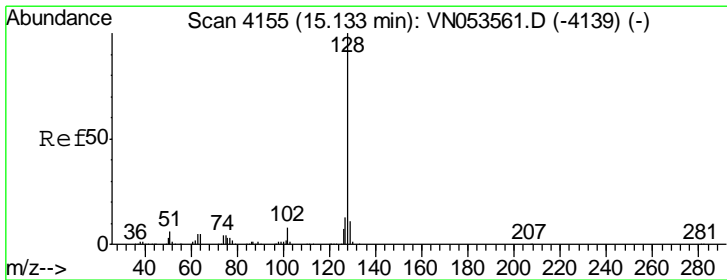
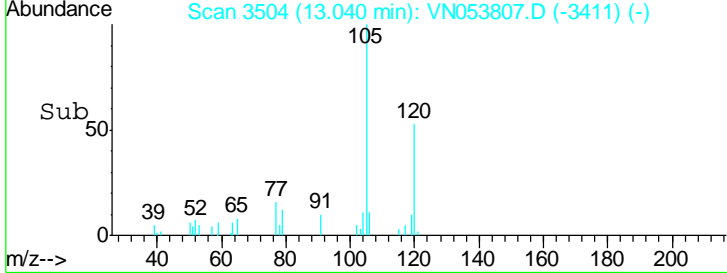
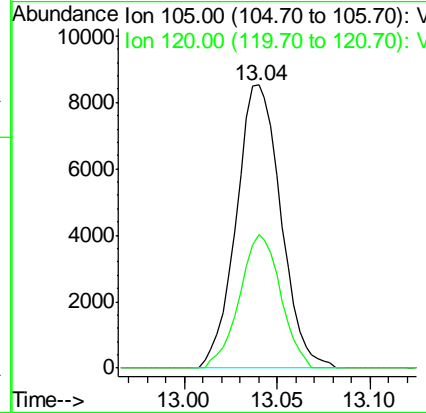
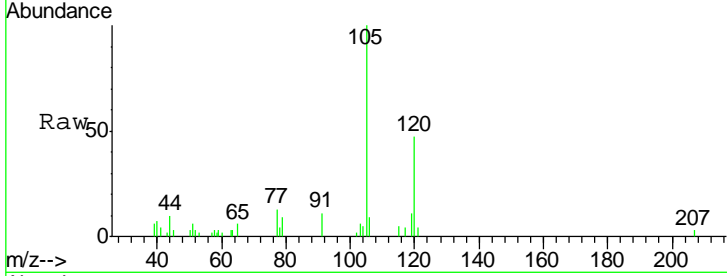




#84
 1,2,4-Trimethylbenzene
 Concen: 0.567 ug/l
 RT: 13.04 min Scan# 3504
 Delta R.T. 0.00 min
 Lab File: VN053807.D
 Acq: 15 Feb 2019 18:25

Instrument :
 MSVOA_N
 ClientSampled :
 CL-01-021419-E

Tgt Ion:105 Resp: 14250
 Ion Ratio Lower Upper
 105 100
 120 43.4 23.0 69.0



#95
 Naphthalene
 Concen: 1.938 ug/l
 RT: 15.14 min Scan# 4156
 Delta R.T. 0.00 min
 Lab File: VN053807.D
 Acq: 15 Feb 2019 18:25

Tgt Ion:128 Resp: 3886
 Ion Ratio Lower Upper
 128 100
 127 10.5 10.3 15.5
 129 2.6 8.6 13.0#

