

Data Path : Z:\voasrv\HPCHEM1\MSVOA\_N\Data\VN021621\  
 Data File : VN065876.D  
 Acq On : 16 Feb 2021 16:34  
 Operator : JC/MD  
 Sample : M1413-06  
 Misc : 5.00mL/MSVOA\_N/WATER  
 ALS Vial : 5 Sample Multiplier: 1

Instrument :  
 MSVOA\_N  
 ClientSampleId :  
 TB-01-021221

Quant Time: Feb 16 16:57:31 2021  
 Quant Method : Z:\voasrv\HPCHEM1\MSVOA\_N\methods\82N012521W.M  
 Quant Title : SW846 8260  
 QLast Update : Mon Feb 15 10:57:01 2021  
 Response via : Initial Calibration

Compound	R.T.	QIon	Response	Conc	Units	Dev(Min)
Internal Standards						
1) Pentafluorobenzene	7.621	168	162217	50.00	ug/l	0.00
34) 1,4-Difluorobenzene	8.547	114	272773	50.00	ug/l	0.00
63) Chlorobenzene-d5	11.376	117	235497	50.00	ug/l	0.00
72) 1,4-Dichlorobenzene-d4	13.315	152	83145	50.00	ug/l	0.00
System Monitoring Compounds						
33) 1,2-Dichloroethane-d4	7.984	65	88553	41.49	ug/l	0.00
Spiked Amount	50.000	Range 61 - 141	Recovery =	82.98%		
35) Dibromofluoromethane	7.544	113	77976	48.24	ug/l	0.00
Spiked Amount	50.000	Range 69 - 133	Recovery =	96.48%		
50) Toluene-d8	10.055	98	335963	52.88	ug/l	0.00
Spiked Amount	50.000	Range 65 - 126	Recovery =	105.76%		
62) 4-Bromofluorobenzene	12.373	95	106308	46.46	ug/l	0.00
Spiked Amount	50.000	Range 58 - 135	Recovery =	92.92%		

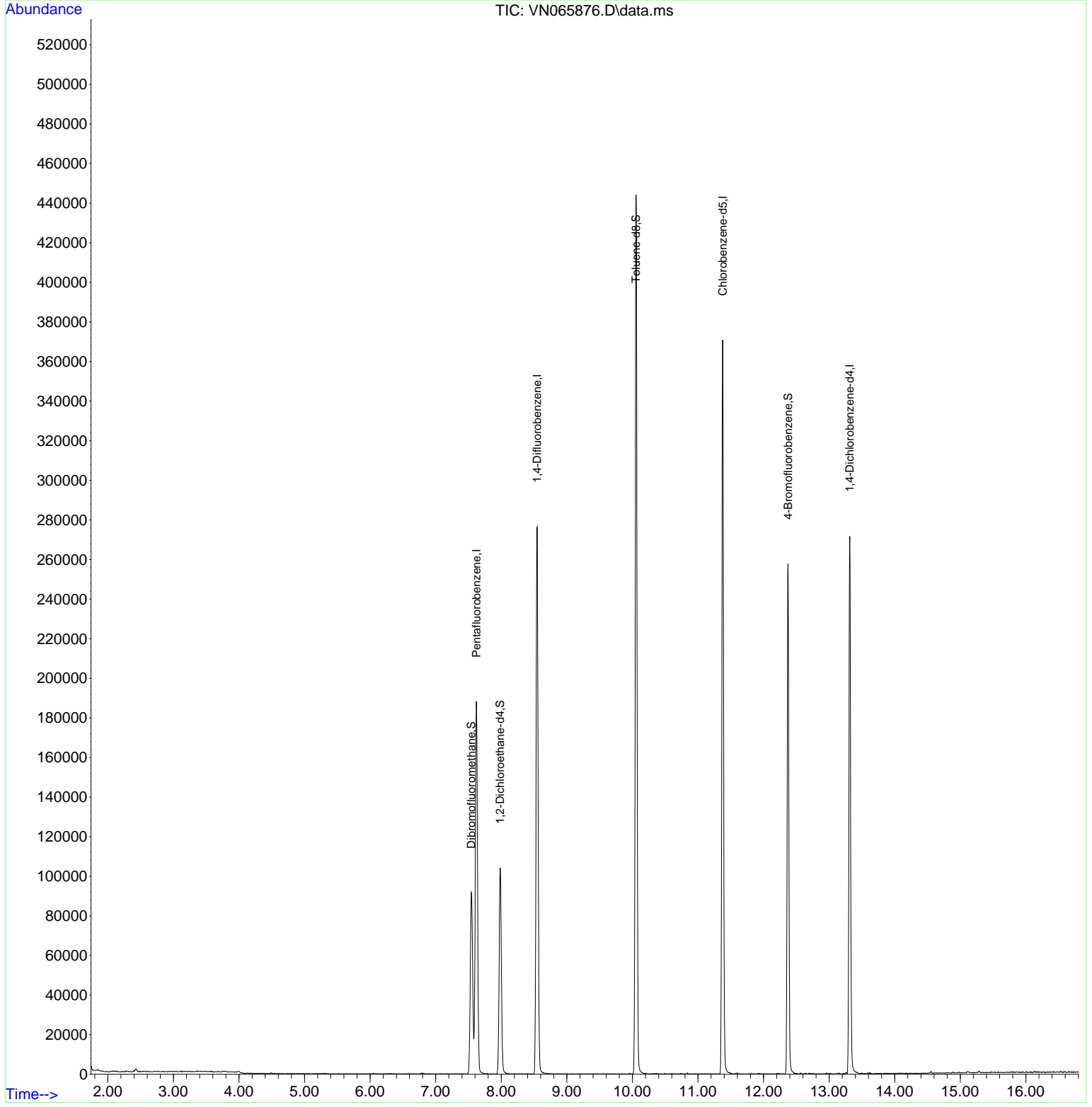
Target Compounds Qvalue

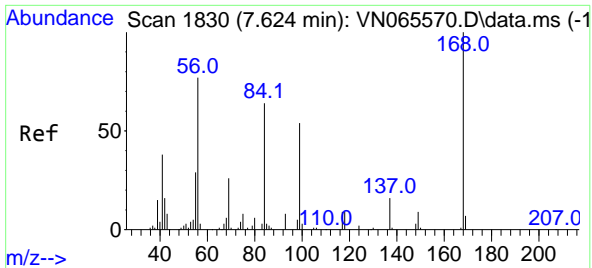
(#) = qualifier out of range (m) = manual integration (+) = signals summed

Data Path : Z:\voasrv\HPCHEM1\MSVOA\_N\Data\VN021621\  
 Data File : VN065876.D  
 Acq On : 16 Feb 2021 16:34  
 Operator : JC/MD  
 Sample : M1413-06  
 Misc : 5.00mL/MSVOA\_N/WATER  
 ALS Vial : 5 Sample Multiplier: 1

**Instrument :**  
 MSVOA\_N  
**ClientSampleId :**  
 TB-01-021221

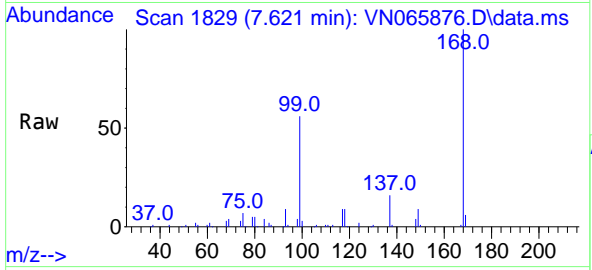
Quant Time: Feb 16 16:57:31 2021  
 Quant Method : Z:\voasrv\HPCHEM1\MSVOA\_N\methods\82N012521W.M  
 Quant Title : SW846 8260  
 QLast Update : Mon Feb 15 10:57:01 2021  
 Response via : Initial Calibration



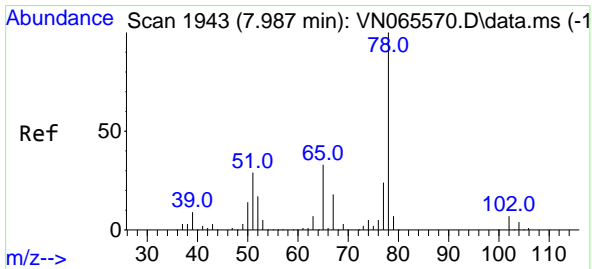
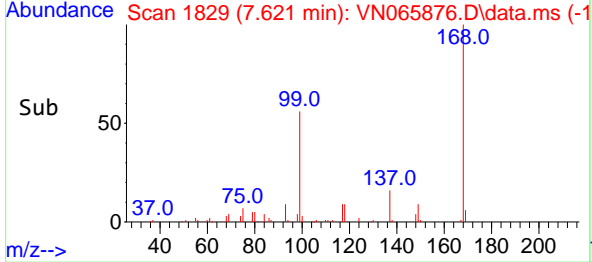
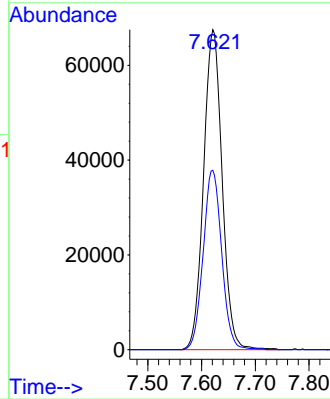


#1  
 Pentafluorobenzene  
 Concen: 50.00 ug/l  
 RT: 7.621 min Scan# 1829  
 Delta R.T. -0.003 min  
 Lab File: VN065876.D  
 Acq: 16 Feb 2021 16:34

**Instrument :**  
 MSVOA\_N  
**ClientSampled :**  
 TB-01-021221

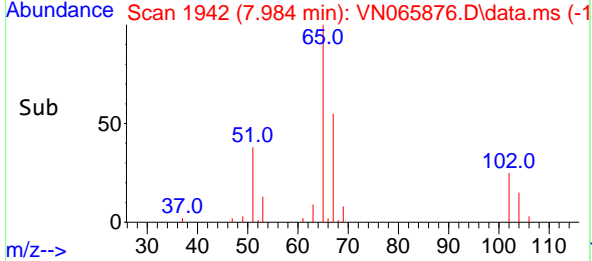
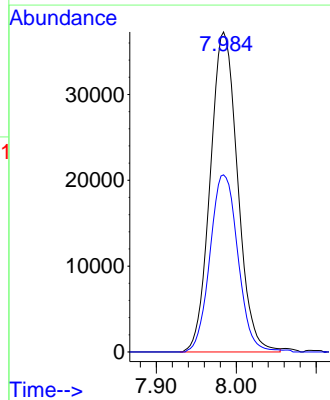
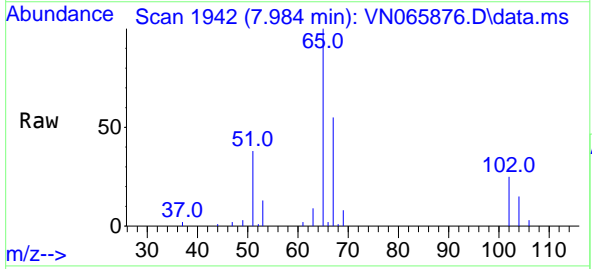


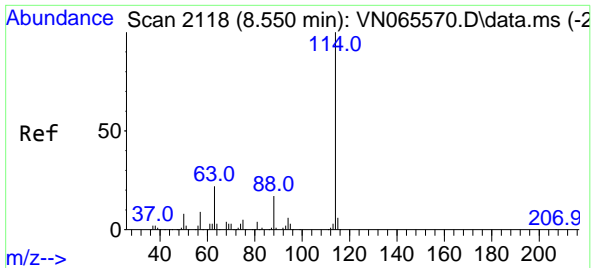
Tgt Ion:168 Resp: 162217  
 Ion Ratio Lower Upper  
 168 100  
 99 56.0 42.6 63.8



#33  
 1,2-Dichloroethane-d4  
 Concen: 41.49 ug/l  
 RT: 7.984 min Scan# 1942  
 Delta R.T. -0.003 min  
 Lab File: VN065876.D  
 Acq: 16 Feb 2021 16:34

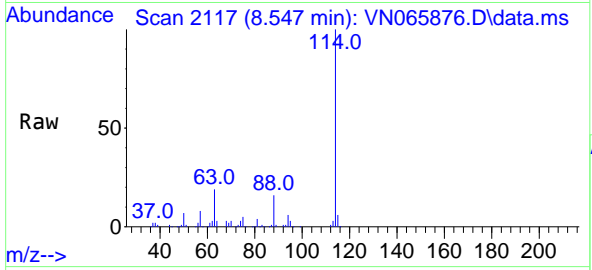
Tgt Ion: 65 Resp: 88553  
 Ion Ratio Lower Upper  
 65 100  
 67 56.6 0.0 107.2





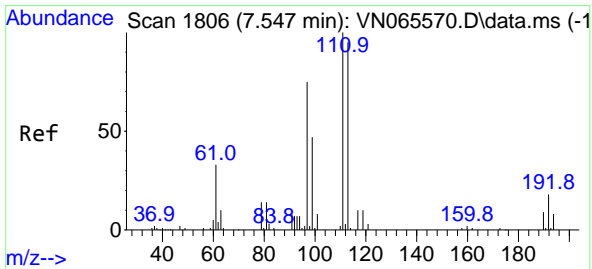
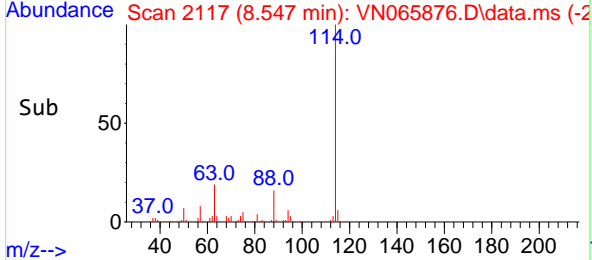
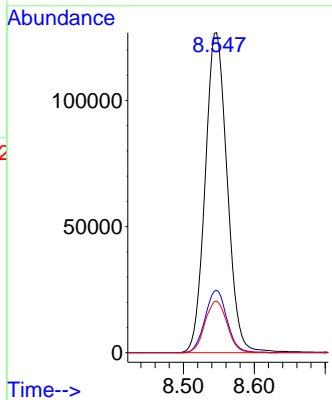
#34  
 1,4-Difluorobenzene  
 Concen: 50.00 ug/l  
 RT: 8.547 min Scan# 2117  
 Delta R.T. -0.003 min  
 Lab File: VN065876.D  
 Acq: 16 Feb 2021 16:34

Instrument :  
 MSVOA\_N  
 ClientSampled :  
 TB-01-021221

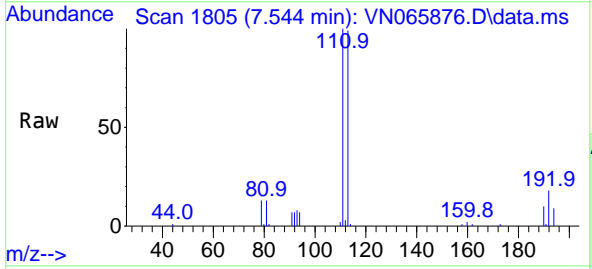


Tgt Ion:114 Resp: 272773

Ion	Ratio	Lower	Upper
114	100		
63	19.5	0.0	38.6
88	16.1	0.0	30.6

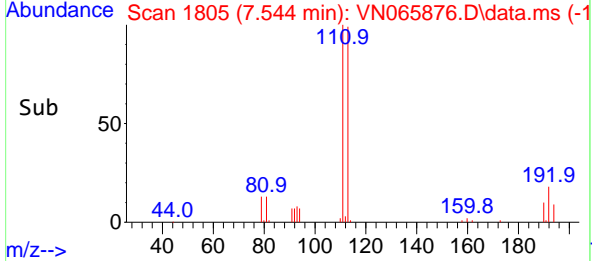
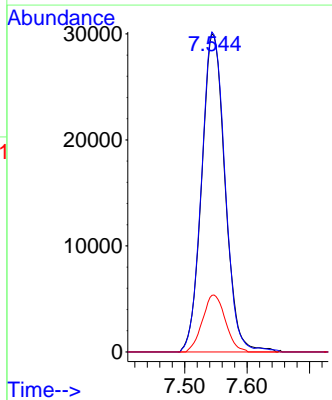


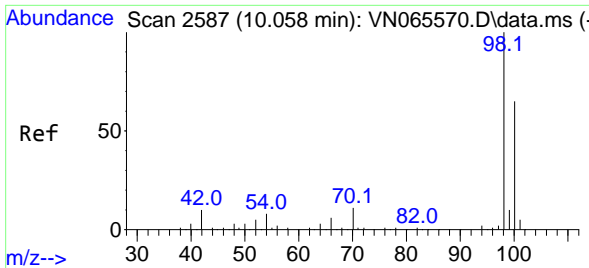
#35  
 Dibromofluoromethane  
 Concen: 48.24 ug/l  
 RT: 7.544 min Scan# 1805  
 Delta R.T. -0.003 min  
 Lab File: VN065876.D  
 Acq: 16 Feb 2021 16:34



Tgt Ion:113 Resp: 77976

Ion	Ratio	Lower	Upper
113	100		
111	100.2	82.2	123.2
192	17.6	15.4	23.0

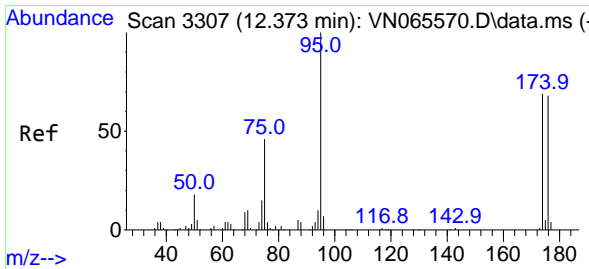
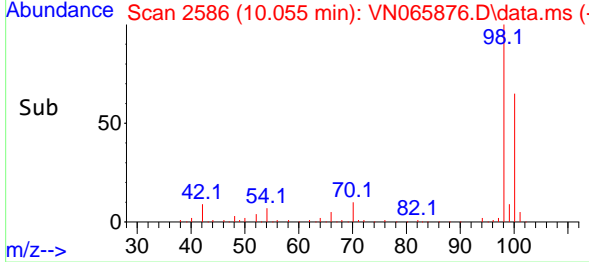
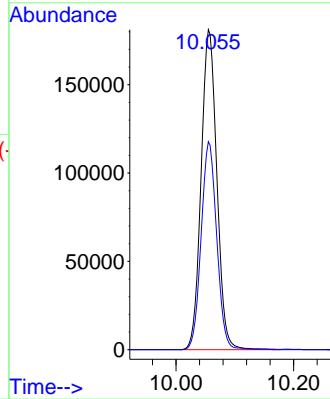
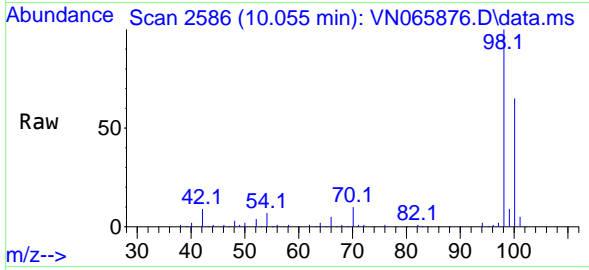




#50  
 Toluene-d8  
 Concen: 52.88 ug/l  
 RT: 10.055 min Scan# 2586  
 Delta R.T. -0.003 min  
 Lab File: VN065876.D  
 Acq: 16 Feb 2021 16:34

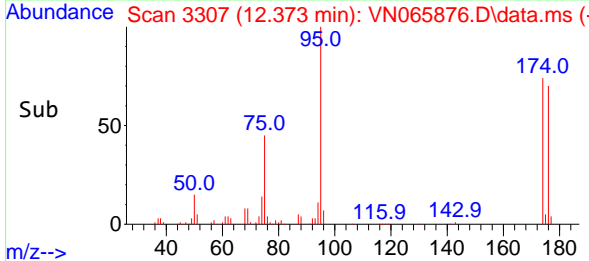
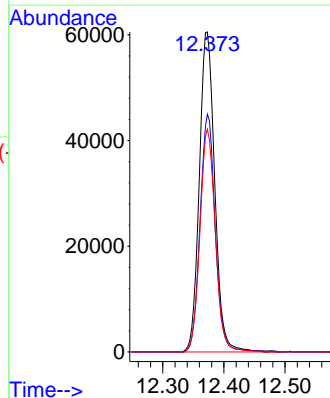
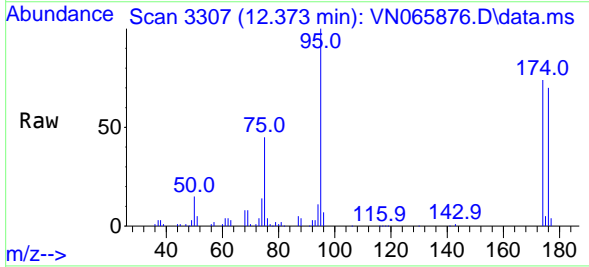
Instrument :  
 MSVOA\_N  
 ClientSampled :  
 TB-01-021221

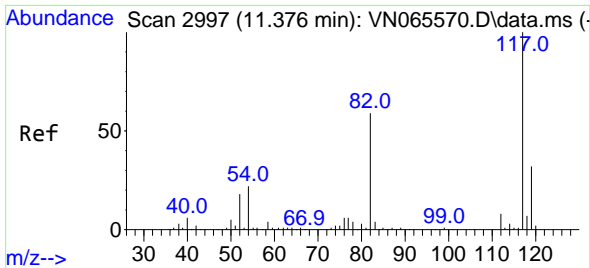
Tgt Ion: 98 Resp: 335963  
 Ion Ratio Lower Upper  
 98 100  
 100 64.3 50.5 75.7



#62  
 4-Bromofluorobenzene  
 Concen: 46.46 ug/l  
 RT: 12.373 min Scan# 3307  
 Delta R.T. 0.000 min  
 Lab File: VN065876.D  
 Acq: 16 Feb 2021 16:34

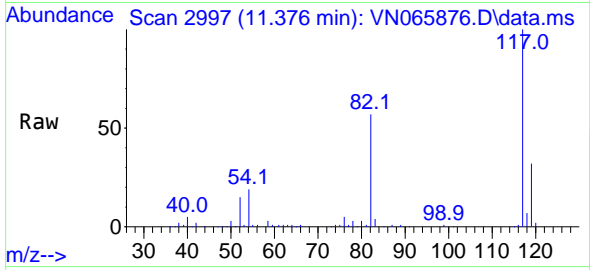
Tgt Ion: 95 Resp: 106308  
 Ion Ratio Lower Upper  
 95 100  
 174 72.9 0.0 169.0  
 176 69.0 0.0 162.4



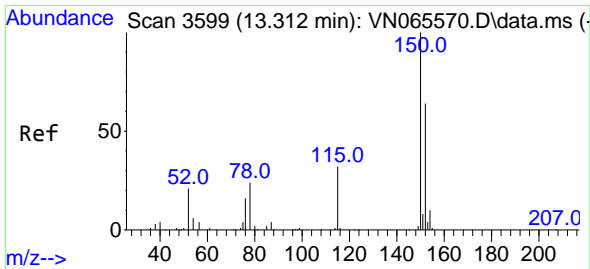
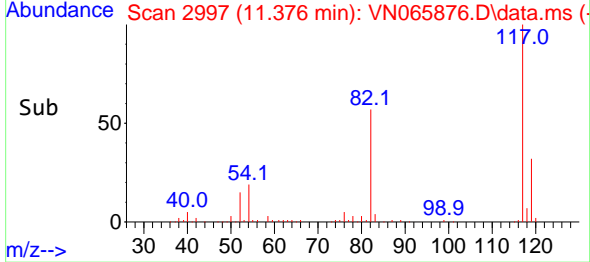
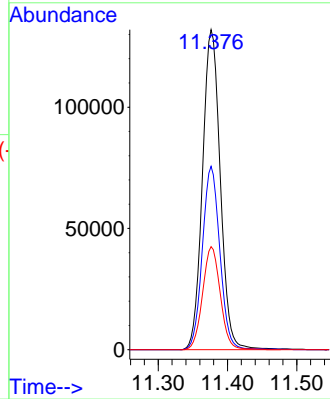


#63  
 Chlorobenzene-d5  
 Concen: 50.00 ug/l  
 RT: 11.376 min Scan# 2997  
 Delta R.T. 0.000 min  
 Lab File: VN065876.D  
 Acq: 16 Feb 2021 16:34

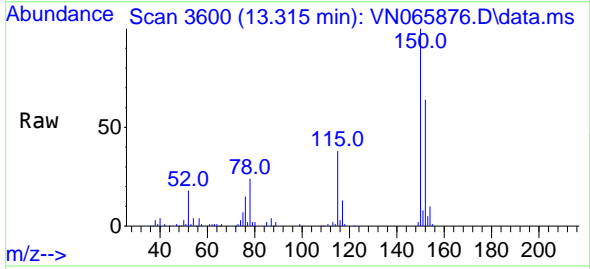
Instrument :  
 MSVOA\_N  
 ClientSampled :  
 TB-01-021221



Tgt Ion:117 Resp: 235497  
 Ion Ratio Lower Upper  
 117 100  
 82 57.3 43.7 65.5  
 119 32.2 26.1 39.1



#72  
 1,4-Dichlorobenzene-d4  
 Concen: 50.00 ug/l  
 RT: 13.315 min Scan# 3600  
 Delta R.T. 0.003 min  
 Lab File: VN065876.D  
 Acq: 16 Feb 2021 16:34



Tgt Ion:152 Resp: 83145  
 Ion Ratio Lower Upper  
 152 100  
 115 60.9 28.5 85.6  
 150 159.2 0.0 347.6

