

Data Path : Z:\VOASRV\HPCHEM1\MSVOA N\DATA\VN021819\
 Data File : VN053854.D
 Acq On : 18 Feb 2019 20:09
 Operator : JC/SP
 Sample : K1518-02
 Misc : 5.00mL/MSVOA N/WATER
 ALS Vial : 26 Sample Multiplier: 1

Instrument :
 MSVOA_N
 ClientSampled :
 CABLE-BRIDGE-FOUNDATION-D-1

Quant Time: Feb 19 03:59:09 2019
 Quant Method : Z:\VOASRV\HPCHEM1\MSVOA_N\METHODS\82N013019W.M
 Quant Title : SW846 8260
 QLast Update : Fri Feb 01 09:11:52 2019
 Response via : Initial Calibration

Internal Standards	R.T.	QIon	Response	Conc	Units	Dev(Min)
1) Pentafluorobenzene	7.67	168	614166	50.00	ug/l	0.00
34) 1,4-Difluorobenzene	8.59	114	1074957	50.00	ug/l	0.00
63) Chlorobenzene-d5	11.41	117	1054625	50.00	ug/l	0.00
72) 1,4-Dichlorobenzene-d4	13.34	152	414113	50.00	ug/l	0.00

System Monitoring Compounds

33) 1,2-Dichloroethane-d4	8.03	65	345921	56.14	ug/l	0.00
Spiked Amount	50.000		Recovery	=	112.28%	
35) Dibromofluoromethane	7.59	113	344728	50.75	ug/l	0.00
Spiked Amount	50.000		Recovery	=	101.50%	
50) Toluene-d8	10.09	98	1325823	51.99	ug/l	0.00
Spiked Amount	50.000		Recovery	=	103.98%	
62) 4-Bromofluorobenzene	12.40	95	457030	53.73	ug/l	0.00
Spiked Amount	50.000		Recovery	=	107.46%	

Target Compounds

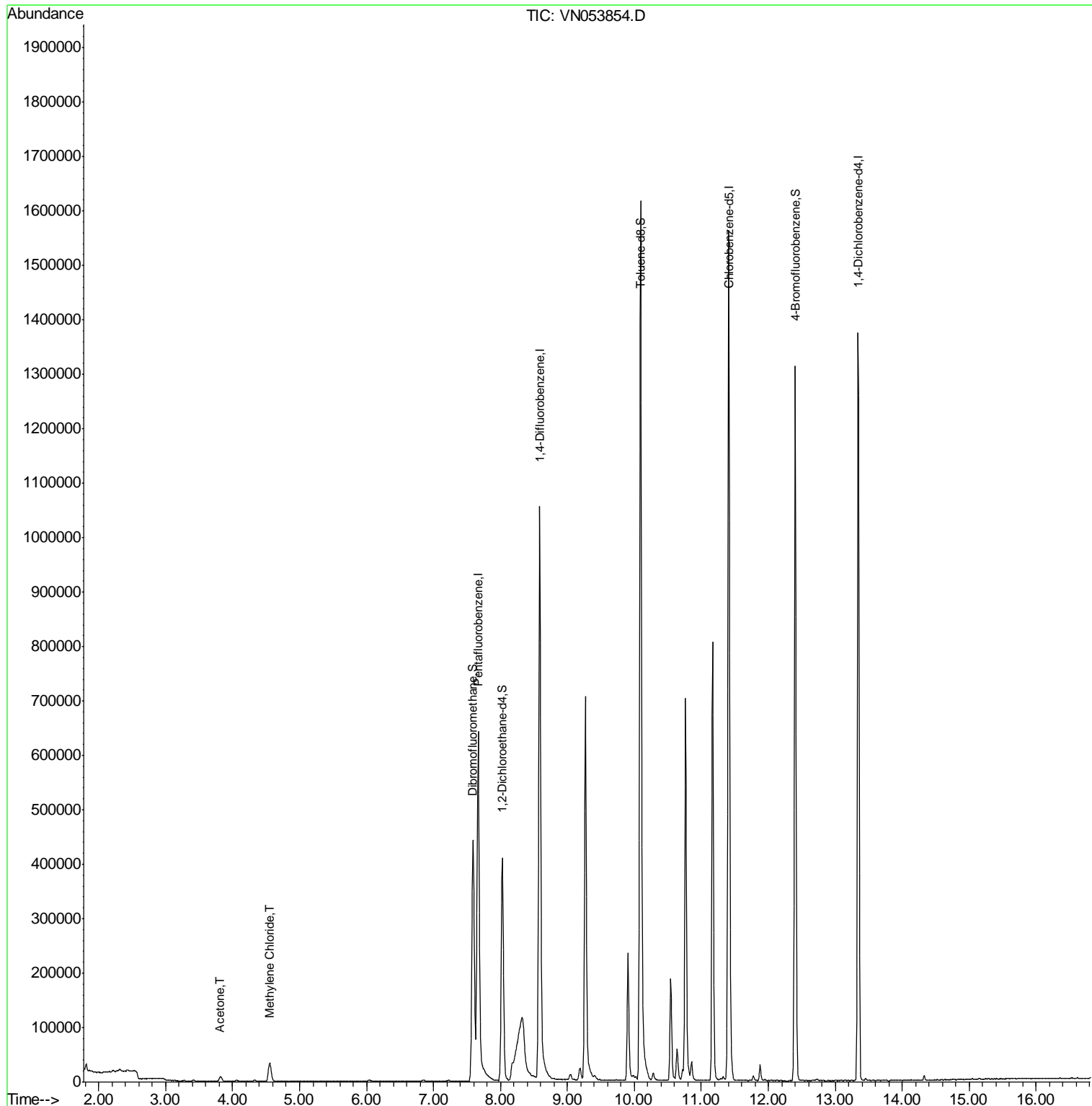
					Qvalue
16) Acetone	3.81	43	16883	10.683	ug/l 97
20) Methylene Chloride	4.55	84	27252	4.110	ug/l 96

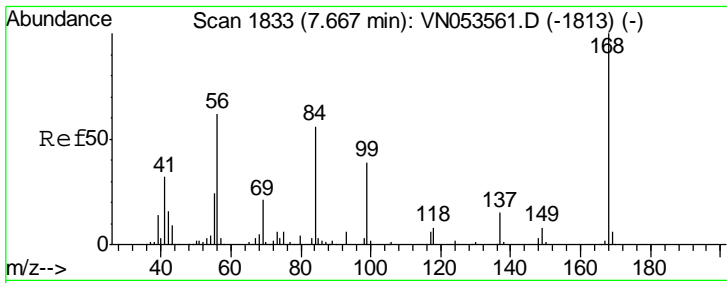
(#) = qualifier out of range (m) = manual integration (+) = signals summed

Data Path : Z:\VOASRV\HPCHEM1\MSVOA N\DATA\VN021819\
 Data File : VN053854.D
 Acq On : 18 Feb 2019 20:09
 Operator : JC/SP
 Sample : K1518-02
 Misc : 5.00mL/MSVOA N/WATER
 ALS Vial : 26 Sample Multiplier: 1

Instrument :
 MSVOA_N
ClientSampleId :
 CABLE-BRIDGE-FOUNDATION-D-1

Quant Time: Feb 19 03:59:09 2019
 Quant Method : Z:\VOASRV\HPCHEM1\MSVOA_N\METHODS\82N013019W.M
 Quant Title : SW846 8260
 QLast Update : Fri Feb 01 09:11:52 2019
 Response via : Initial Calibration

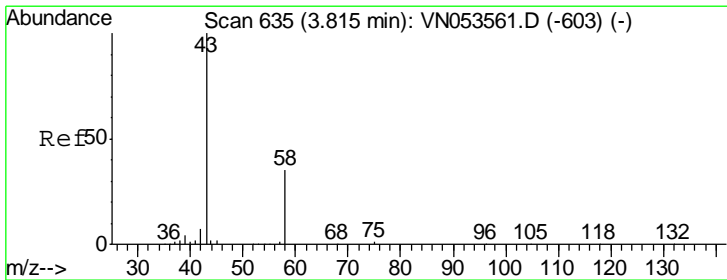
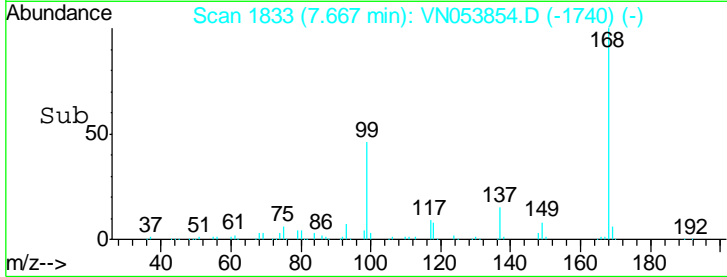
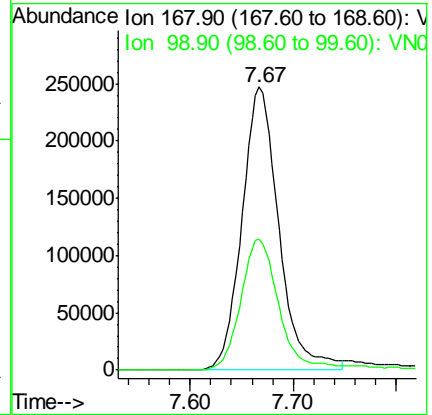
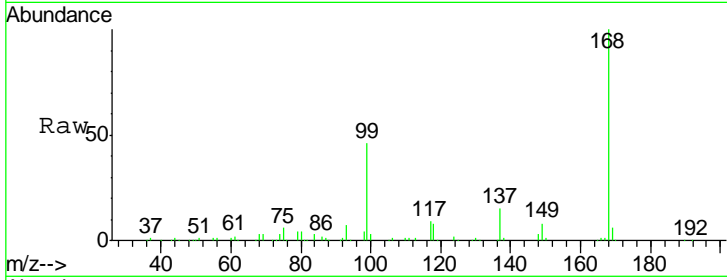




#1
 Pentafluorobenzene
 Concen: 50.000 ug/l
 RT: 7.67 min Scan# 1833
 Delta R.T. -0.00 min
 Lab File: VN053854.D
 Acq: 18 Feb 2019 20:09

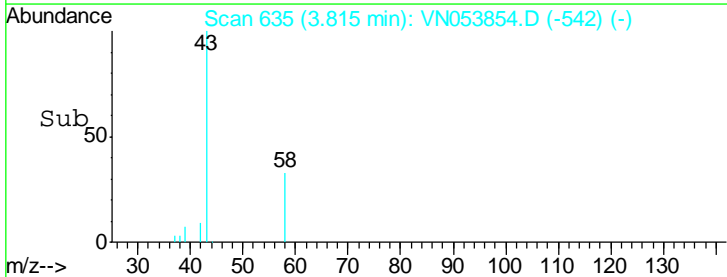
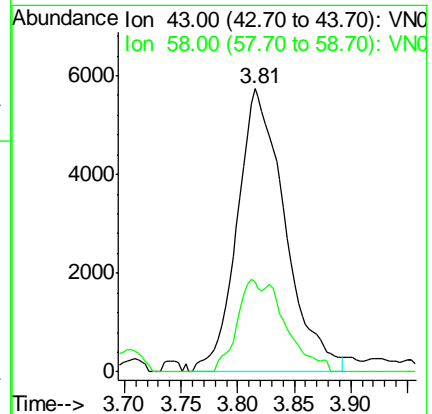
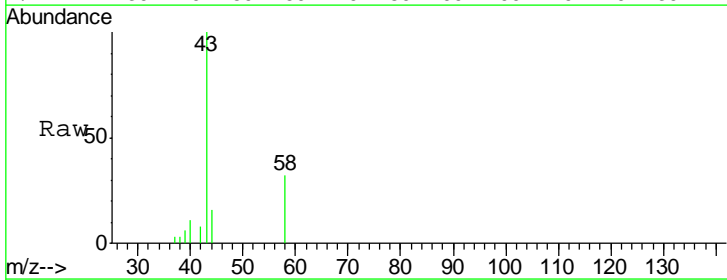
Instrument :
 MSVOA_N
 ClientSampled :
 CABLE-BRIDGE-FOUNDATION-D-1

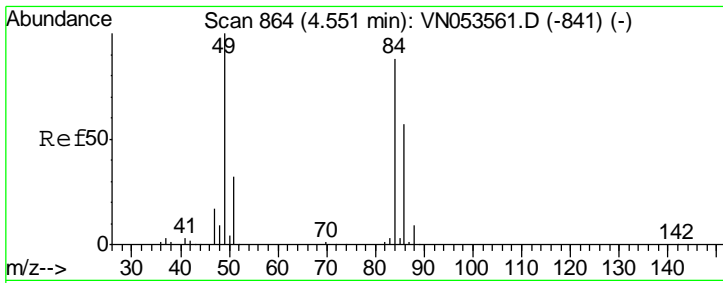
Tgt Ion: 168 Resp: 614166
 Ion Ratio Lower Upper
 168 100
 99 46.2 39.1 58.7



#16
 Acetone
 Concen: 10.683 ug/l
 RT: 3.81 min Scan# 635
 Delta R.T. -0.00 min
 Lab File: VN053854.D
 Acq: 18 Feb 2019 20:09

Tgt Ion: 43 Resp: 16883
 Ion Ratio Lower Upper
 43 100
 58 32.0 27.1 40.7

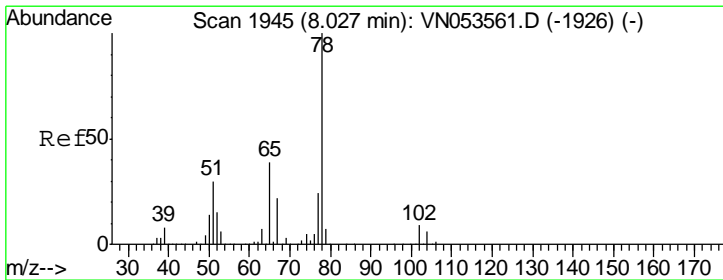
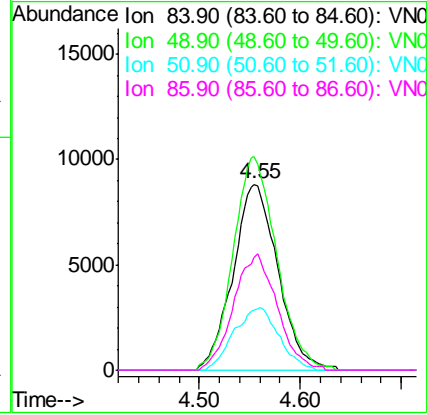
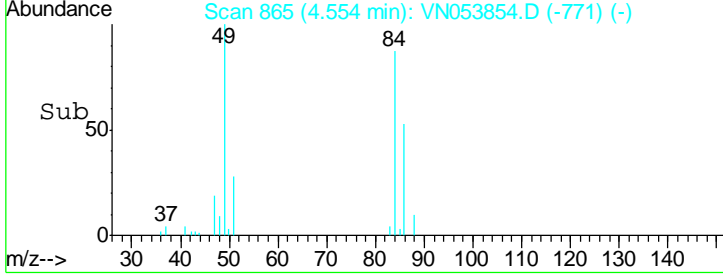
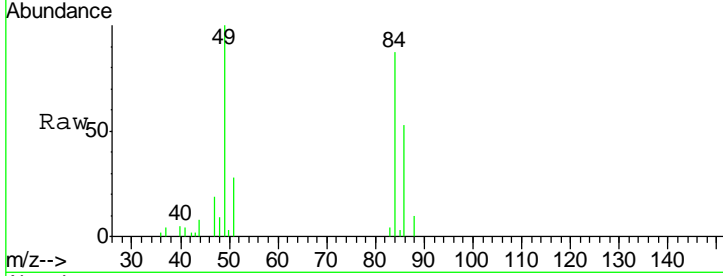




#20
 Methylene Chloride
 Concen: 4.110 ug/l
 RT: 4.55 min Scan# 865
 Delta R.T. 0.00 min
 Lab File: VN053854.D
 Acq: 18 Feb 2019 20:09

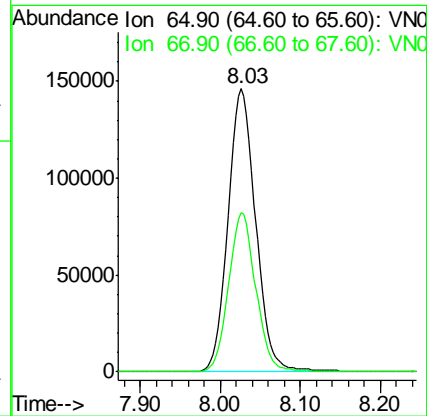
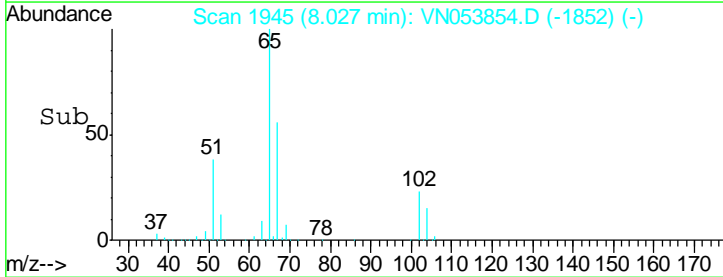
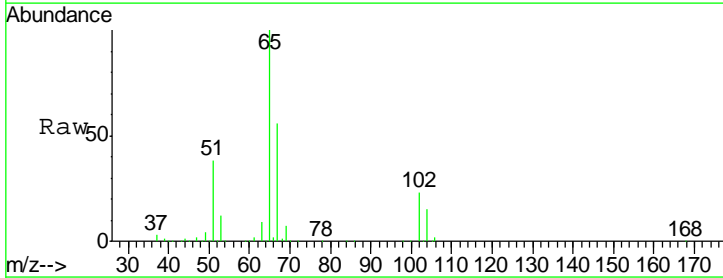
Instrument :
 MSVOA_N
ClientSampled :
 CABLE-BRIDGE-FOUNDATION-D-1

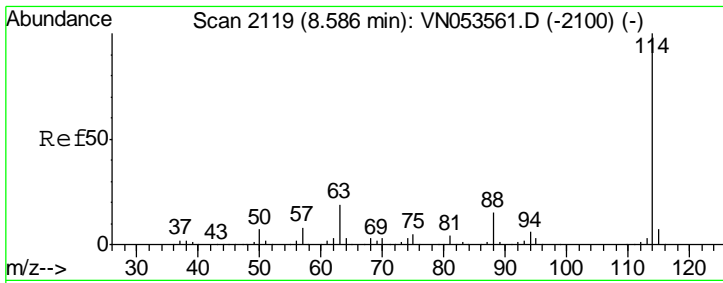
Tgt Ion	Resp	Lower	Upper
84	27252		
84	100		
49	114.7	94.3	141.5
51	32.4	29.4	44.2
86	60.8	51.4	77.0



#33
 1,2-Dichloroethane-d4
 Concen: 56.144 ug/l
 RT: 8.03 min Scan# 1945
 Delta R.T. -0.00 min
 Lab File: VN053854.D
 Acq: 18 Feb 2019 20:09

Tgt Ion	Resp	Lower	Upper
65	345921		
65	100		
67	55.3	0.0	111.2

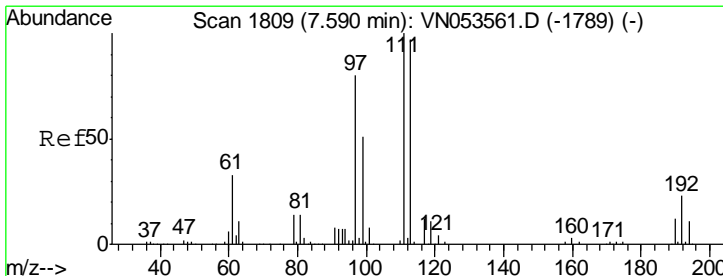
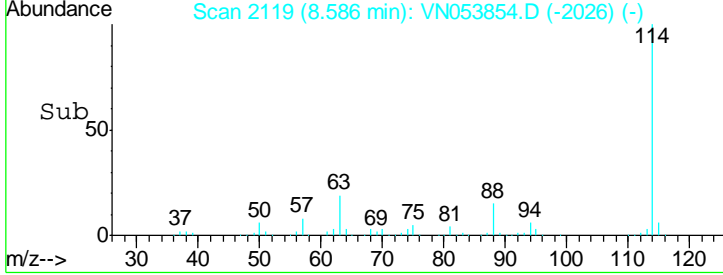
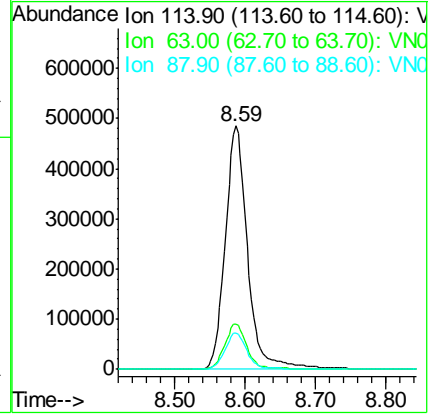
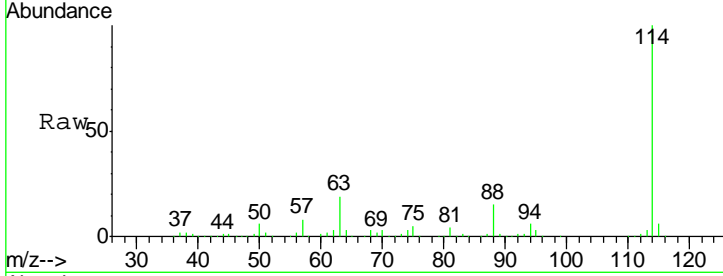




#34
 1,4-Difluorobenzene
 Concen: 50.000 ug/l
 RT: 8.59 min Scan# 2119
 Delta R.T. -0.00 min
 Lab File: VN053854.D
 Acq: 18 Feb 2019 20:09

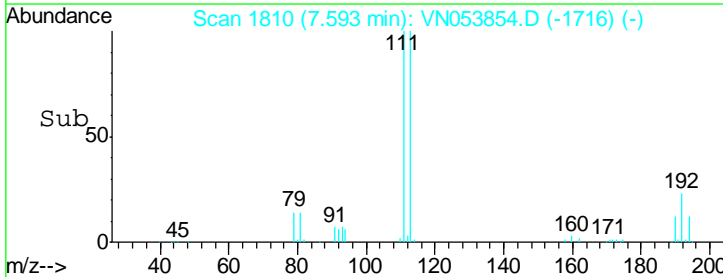
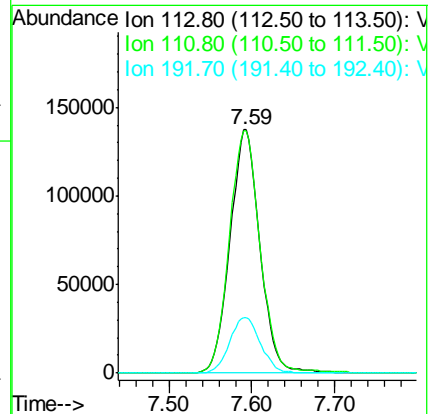
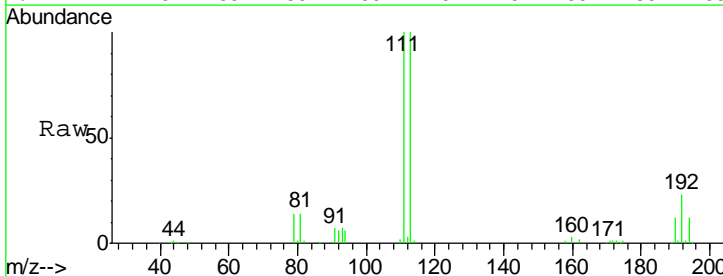
Instrument :
 MSVOA_N
 ClientSampled :
 CABLE-BRIDGE-FOUNDATION-D-1

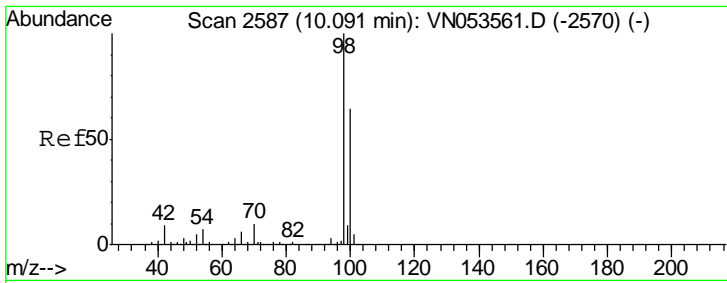
Tgt Ion	Resp	Lower	Upper
114	1074957		
63	18.8	0.0	38.6
88	15.0	0.0	30.4



#35
 Dibromofluoromethane
 Concen: 50.752 ug/l
 RT: 7.59 min Scan# 1810
 Delta R.T. 0.00 min
 Lab File: VN053854.D
 Acq: 18 Feb 2019 20:09

Tgt Ion	Resp	Lower	Upper
113	344728		
111	102.5	81.1	121.7
192	23.6	18.2	27.2

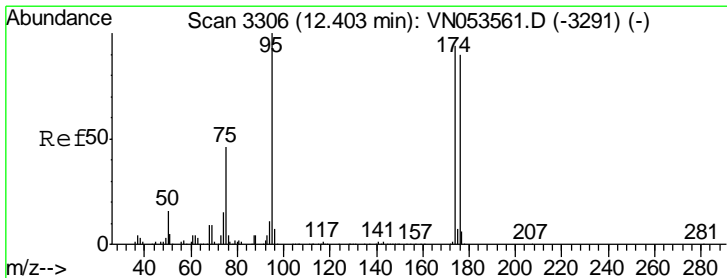
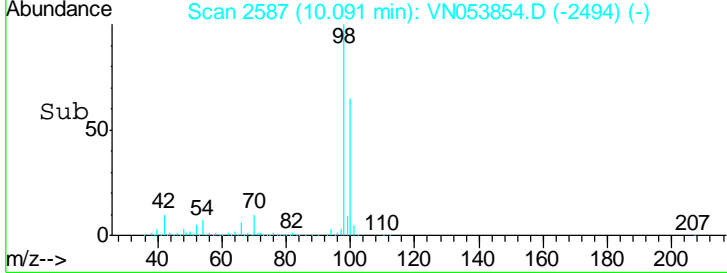
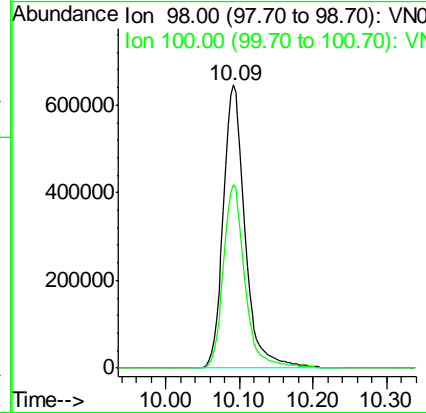
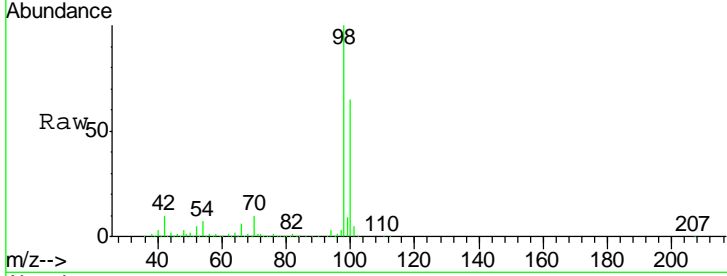




#50
 Toluene-d8
 Concen: 51.985 ug/l
 RT: 10.09 min Scan# 2587
 Delta R.T. -0.00 min
 Lab File: VN053854.D
 Acq: 18 Feb 2019 20:09

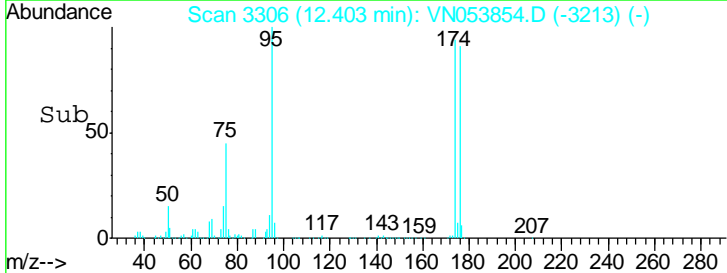
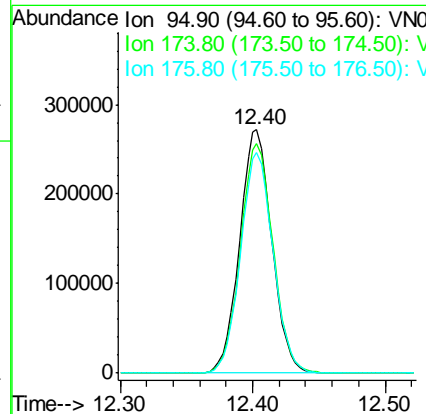
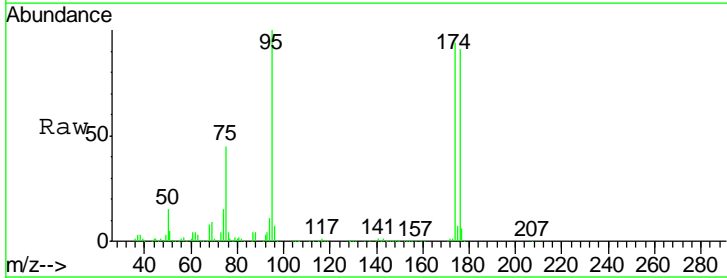
Instrument : MSVOA_N
 ClientSampled : CABLE-BRIDGE-FOUNDATION-D-1

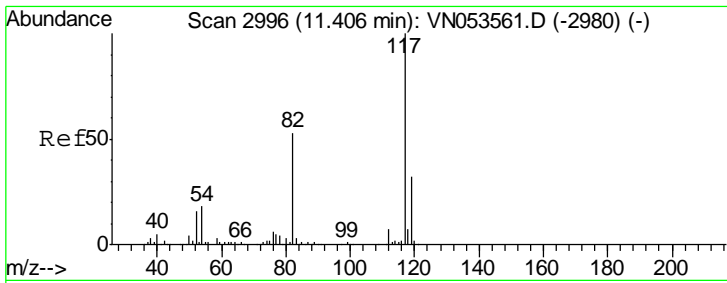
Tgt Ion: 98 Resp: 1325823
 Ion Ratio Lower Upper
 98 100
 100 64.3 51.4 77.0



#62
 4-Bromofluorobenzene
 Concen: 53.730 ug/l
 RT: 12.40 min Scan# 3306
 Delta R.T. -0.00 min
 Lab File: VN053854.D
 Acq: 18 Feb 2019 20:09

Tgt Ion: 95 Resp: 457030
 Ion Ratio Lower Upper
 95 100
 174 95.9 0.0 183.2
 176 91.8 0.0 177.4



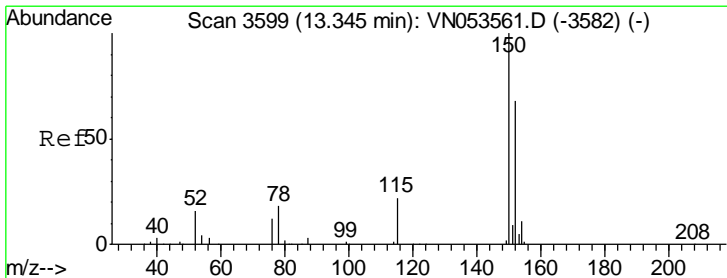
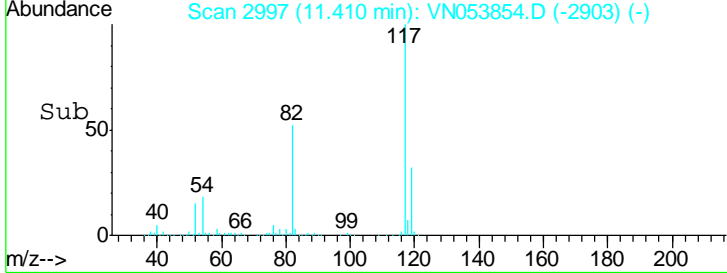
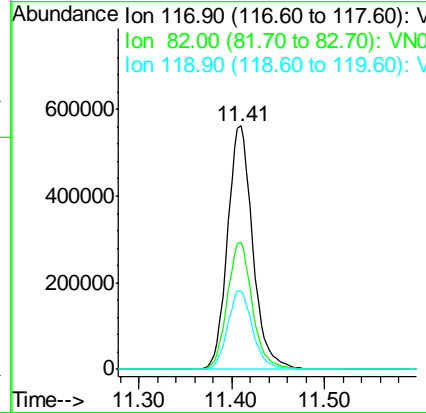
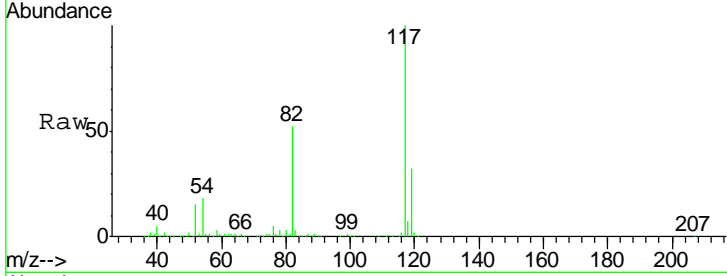


#63
 Chlorobenzene-d5
 Concen: 50.000 ug/l
 RT: 11.41 min Scan# 2997
 Delta R.T. 0.00 min
 Lab File: VN053854.D
 Acq: 18 Feb 2019 20:09

Instrument :
 MSVOA_N
ClientSampled :
 CABLE-BRIDGE-FOUNDATION-D-1

Tgt Ion: 117 Resp: 1054625

Ion	Ratio	Lower	Upper
117	100		
82	52.2	42.9	64.3
119	32.2	26.0	39.0



#72
 1,4-Dichlorobenzene-d4
 Concen: 50.000 ug/l
 RT: 13.34 min Scan# 3598
 Delta R.T. -0.00 min
 Lab File: VN053854.D
 Acq: 18 Feb 2019 20:09

Tgt Ion: 152 Resp: 414113

Ion	Ratio	Lower	Upper
152	100		
115	54.0	27.8	83.4
150	154.7	0.0	349.0

