

Data Path : Z:\voasrv\HPCHEM1\MSVOA_X\Data\VX022125\
 Data File : VX045011.D
 Acq On : 21 Feb 2025 11:07
 Operator : JC/MD
 Sample : VSTDICC100
 Misc : 5.0mL/MSVOA_X/WATER
 ALS Vial : 5 Sample Multiplier: 1

Instrument :
 MSVOA_N
 ClientSampleId :

Quant Time: Feb 21 12:20:16 2025
 Quant Method : Z:\voasrv\HPCHEM1\MSVOA_X\Method\624X011625W.M
 Quant Title : METHOD 624 VOLATILE ORGANIC ANALYSIS
 QLast Update : Fri Jan 17 01:21:41 2025
 Response via : Initial Calibration

Compound	R.T.	QIon	Response	Conc	Units	Dev(Min)
Internal Standards						
1) Bromochloromethane	4.891	128	17332	30.00	ug/l	0.00
28) 1,4-Difluorobenzene	6.751	114	98516	30.00	ug/l	0.00
57) Chlorobenzene-d5	10.049	117	88321	30.00	ug/l	0.00
System Monitoring Compounds						
27) 1,2-Dichloroethane-d4	5.946	65	50601	30.24	ug/l	0.00
Spiked Amount	30.000	Range	91 - 110	Recovery	=	100.80%
60) 4-Bromofluorobenzene	11.079	95	49683	28.96	ug/l	0.00
Spiked Amount	30.000	Range	63 - 112	Recovery	=	96.53%
63) Toluene-d8	8.647	98	148078	30.83	ug/l	0.00
Spiked Amount	30.000	Range	91 - 112	Recovery	=	102.77%
Target Compounds						
						Qvalue
2) Dichlorodifluoromethane	1.166	85	140259	91.02	ug/l	98
3) Chloromethane	1.294	50	166067	102.45	ug/l	99
4) Vinyl Chloride	1.374	62	163236	102.92	ug/l	96
5) Bromomethane	1.593	94	54558	142.33	ug/l	97
6) Chloroethane	1.666	64	84688	336.76	ug/l	97
7) Trichlorofluoromethane	1.874	101	220045	126.69	ug/l	99
8) Diethyl Ether	2.130	74	82964	123.81	ug/l	93
9) 1,1,2-Trichlorotrifluo...	2.319	101	129494	104.06	ug/l	97
10) 1,1-Dichloroethene	2.313	96	130666	102.07	ug/l	92
11) Methyl Iodide	2.447	142	161844	91.23	ug/l	95
12) Methyl Acetate	2.703	43	150865	80.72	ug/l	97
13) Acrolein	2.233	56	156104	755.26	ug/l	99
14) Acrylonitrile	3.062	53	370914	544.62	ug/l	100
15) Acetone	2.380	58	97560	533.85	ug/l	93
16) Carbon Disulfide	2.502	76	371874	104.52	ug/l	100
17) Allyl chloride	2.654	41	246065	106.58	ug/l	97
18) Methylene Chloride	2.782	84	144938	101.16	ug/l	94
19) trans-1,2-Dichloroethene	3.087	96	130562	102.56	ug/l	98
20) Diisopropyl ether	3.757	45	470167	112.20	ug/l	92
21) 1,1-Dichloroethane	3.605	63	258430	103.96	ug/l	98
22) cis-1,2-Dichloroethene	4.477	96	156933	99.60	ug/l	96
23) tert-Butyl Alcohol	2.989	59	125570	381.20	ug/l #	100
24) Methyl tert-Butyl Ether	3.111	73	426471	96.14	ug/l	99
25) Chloroform	5.080	83	248045	100.42	ug/l	97
26) Cyclohexane	5.458	56	236876	113.38	ug/l #	95
29) 1,1-Dichloropropene	5.684	75	174620	101.90	ug/l	99
30) 2-Butanone	4.550	43	505036	536.53	ug/l	97
31) 2,2-Dichloropropane	4.465	77	202370	85.34	ug/l	99
32) 1,1,1-Trichloroethane	5.373	97	211623	93.19	ug/l	97
33) Carbon Tetrachloride	5.666	117	178685	93.28	ug/l	98
34) Benzene	6.031	78	548369	100.30	ug/l	99
35) Methacrylonitrile	4.910	41	111962	106.42	ug/l	96
36) 1,2-Dichloroethane	6.080	62	189437	96.92	ug/l	99
37) Trichloroethene	7.117	130	128134	97.08	ug/l	96
38) Methylcyclohexane	7.373	83	237839	102.16	ug/l	98
39) 1,2-Dichloropropane	7.421	63	140148	102.80	ug/l	99
40) Dibromomethane	7.574	93	97805	96.50	ug/l	98
41) Bromodichloromethane	7.818	83	197339	94.30	ug/l	98
42) Vinyl Acetate	3.715	43	2042535	546.39	ug/l	97

Data Path : Z:\voasrv\HPCHEM1\MSVOA_X\Data\VX022125\
 Data File : VX045011.D
 Acq On : 21 Feb 2025 11:07
 Operator : JC/MD
 Sample : VSTDIC100
 Misc : 5.0mL/MSVOA_X/WATER
 ALS Vial : 5 Sample Multiplier: 1

Instrument :
 MSVOA_N
 ClientSampleId :

Quant Time: Feb 21 12:20:16 2025
 Quant Method : Z:\voasrv\HPCHEM1\MSVOA_X\Method\624X011625W.M
 Quant Title : METHOD 624 VOLATILE ORGANIC ANALYSIS
 QLast Update : Fri Jan 17 01:21:41 2025
 Response via : Initial Calibration

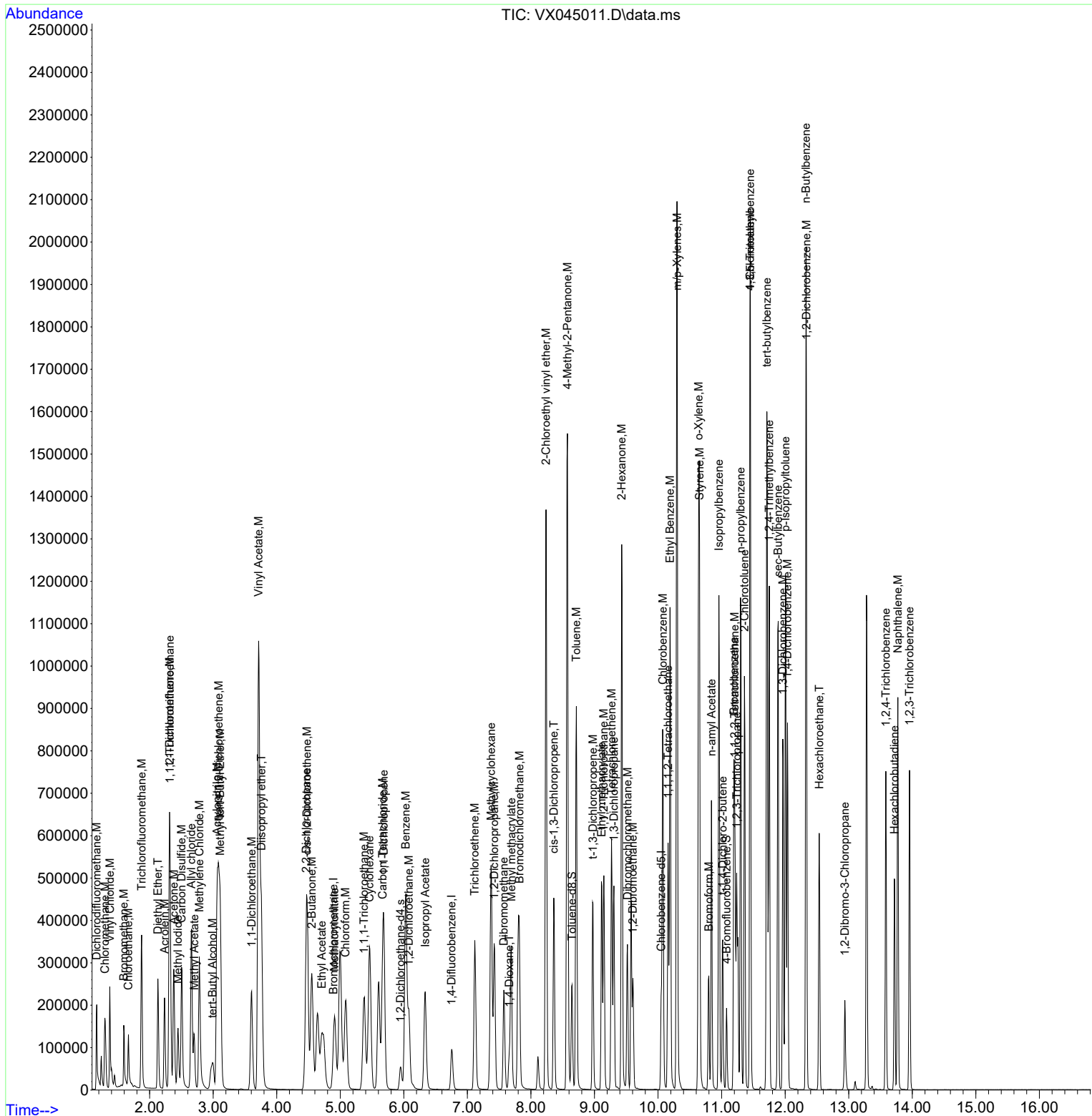
Compound	R.T.	QIon	Response	Conc	Units	Dev(Min)	
43) Ethyl Acetate	4.708	43	199304	107.94	ug/l	#	94
44) Isopropyl Acetate	6.336	43	329903	99.45	ug/l		97
45) 1,4-Dioxane	7.659	88	63728	2017.51	ug/l		97
46) Methyl methacrylate	7.690	41	162523	100.09	ug/l		98
47) n-amyl Acetate	10.842	43	282922	101.63	ug/l		98
48) t-1,3-Dichloropropene	8.976	75	202810	91.81	ug/l		100
49) cis-1,3-Dichloropropene	8.360	75	223833	94.50	ug/l		99
50) 1,1,2-Trichloroethane	9.147	97	127690	97.82	ug/l		97
51) Ethyl methacrylate	9.110	69	214475	94.58	ug/l		89
52) 1,3-Dichloropropane	9.305	76	222694	98.64	ug/l		99
53) Dibromochloromethane	9.519	129	144384	92.57	ug/l		98
54) 1,2-Dibromoethane	9.604	107	130524	94.59	ug/l		99
55) 2-Chloroethyl vinyl ether	8.238	63	535473	486.68	ug/l		98
56) Bromoform	10.799	173	92416	89.35	ug/l		99
58) 4-Methyl-2-Pentanone	8.574	43	983713	528.40	ug/l		96
59) 2-Hexanone	9.427	43	708849	520.09	ug/l		97
61) Tetrachloroethene	9.269	164	104854	98.97	ug/l		96
62) Toluene	8.714	91	575772	99.00	ug/l		98
64) Chlorobenzene	10.073	112	359123	99.43	ug/l		99
65) 1,1,1,2-Tetrachloroethane	10.159	131	117602	90.64	ug/l		99
66) Ethyl Benzene	10.189	91	641324	101.05	ug/l		100
67) m/p-Xylenes	10.299	106	470322	201.60	ug/l		99
68) o-Xylene	10.640	106	230392	98.40	ug/l		100
69) Styrene	10.653	104	387436	100.78	ug/l		99
70) Isopropylbenzene	10.957	105	596402	101.32	ug/l		99
71) 1,1,2,2-Tetrachloroethane	11.207	83	190591	96.32	ug/l		98
72) 1,2,3-Trichloropropane	11.238	75	207345	124.55	ug/l		86
73) Bromobenzene	11.195	156	136270	99.38	ug/l		100
74) n-propylbenzene	11.299	91	717361	107.30	ug/l		98
75) 2-Chlorotoluene	11.360	91	421424	100.26	ug/l		99
76) 1,3,5-Trimethylbenzene	11.451	105	487050	101.89	ug/l		99
77) t-1,4-Dichloro-2-butene	11.018	75	59873	76.02	ug/l		93
78) 4-Chlorotoluene	11.451	91	477861	103.17	ug/l		100
79) tert-butylbenzene	11.713	119	490816	99.95	ug/l		99
80) 1,2,4-Trimethylbenzene	11.750	105	486770	100.93	ug/l		100
81) sec-Butylbenzene	11.890	105	616448	105.12	ug/l		99
82) p-Isopropyltoluene	12.006	119	510223	105.72	ug/l		100
83) 1,3-Dichlorobenzene	11.963	146	250755	102.95	ug/l		99
84) 1,4-Dichlorobenzene	12.036	146	249668	104.56	ug/l		98
85) n-Butylbenzene	12.329	91	476457	113.89	ug/l		99
86) Hexachloroethane	12.536	117	92493	87.12	ug/l		99
87) 1,2-Dichlorobenzene	12.335	146	240056	98.70	ug/l		99
88) 1,2-Dibromo-3-Chloropr...	12.939	75	37960	79.65	ug/l		97
89) 1,2,4-Trichlorobenzene	13.585	180	158594	104.93	ug/l		100
90) Hexachlorobutadiene	13.719	225	60565	103.59	ug/l		98
91) Naphthalene	13.774	128	548026	96.91	ug/l		100
92) 1,2,3-Trichlorobenzene	13.957	180	158881	103.35	ug/l		99

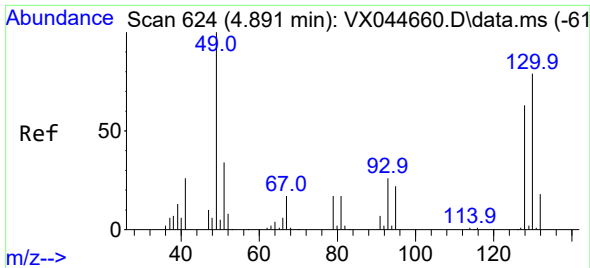
(#) = qualifier out of range (m) = manual integration (+) = signals summed

Data Path : Z:\voasrv\HPCHEM1\MSVOA_X\Data\VX022125\
 Data File : VX045011.D
 Acq On : 21 Feb 2025 11:07
 Operator : JC/MD
 Sample : VSTDIC100
 Misc : 5.0mL/MSVOA_X/WATER
 ALS Vial : 5 Sample Multiplier: 1

Instrument :
 MSVOA_N
 ClientSampleId :

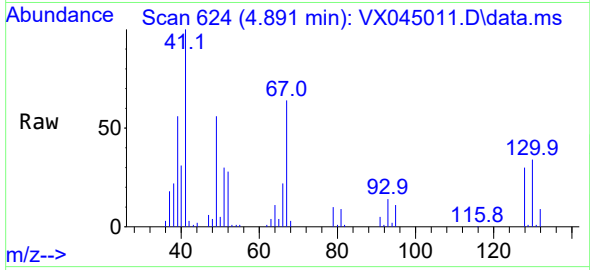
Quant Time: Feb 21 12:20:16 2025
 Quant Method : Z:\voasrv\HPCHEM1\MSVOA_X\Method\624X011625W.M
 Quant Title : METHOD 624 VOLATILE ORGANIC ANALYSIS
 QLast Update : Fri Jan 17 01:21:41 2025
 Response via : Initial Calibration



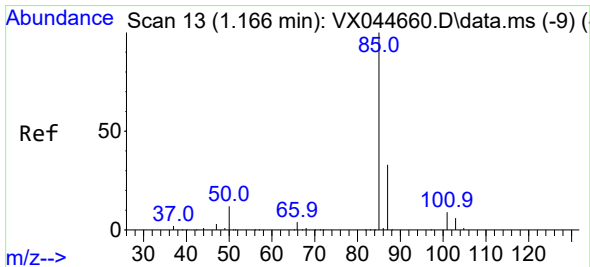
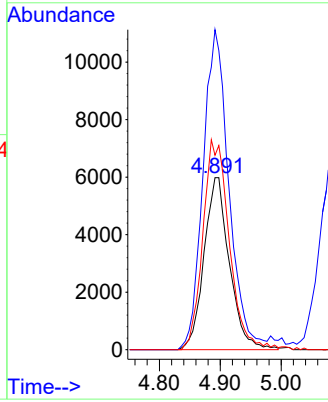
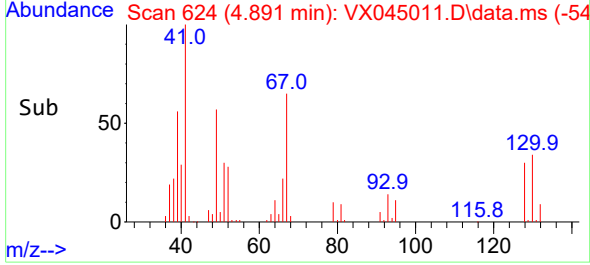


#1
 Bromochloromethane
 Concen: 30.00 ug/l
 RT: 4.891 min Scan# 61
 Delta R.T. 0.000 min
 Lab File: VX045011.D
 Acq: 21 Feb 2025 11:07

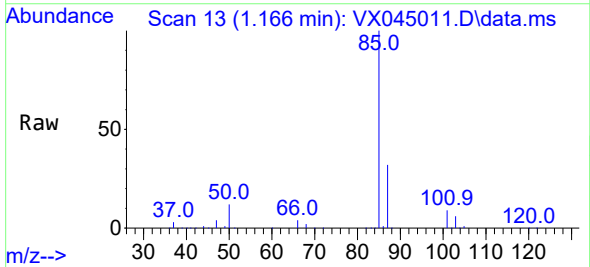
Instrument :
 MSVOA_N
 ClientSampleId :



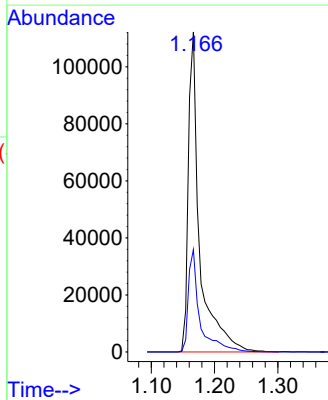
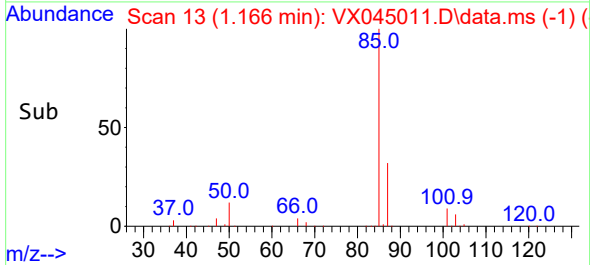
Tgt Ion:128 Resp: 17332
 Ion Ratio Lower Upper
 128 100
 49 189.4 0.0 411.5
 130 126.9 0.0 324.3

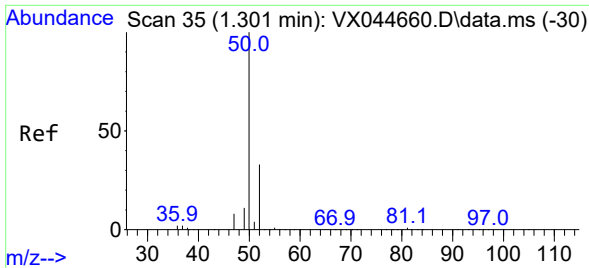


#2
 Dichlorodifluoromethane
 Concen: 91.02 ug/l
 RT: 1.166 min Scan# 13
 Delta R.T. 0.000 min
 Lab File: VX045011.D
 Acq: 21 Feb 2025 11:07



Tgt Ion: 85 Resp: 140259
 Ion Ratio Lower Upper
 85 100
 87 32.0 16.6 49.8

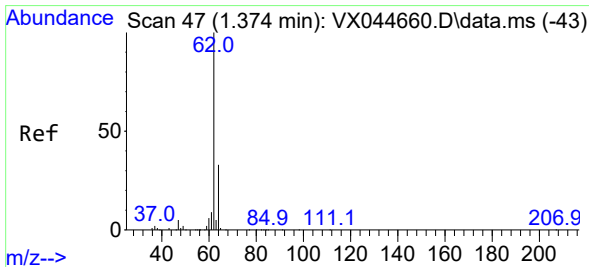
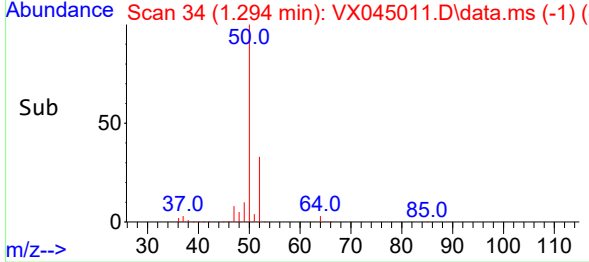
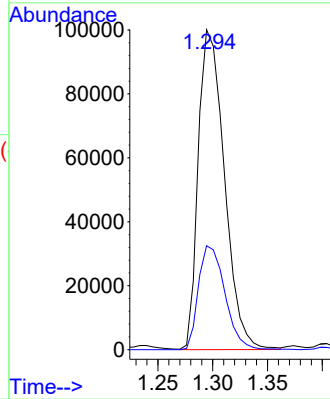
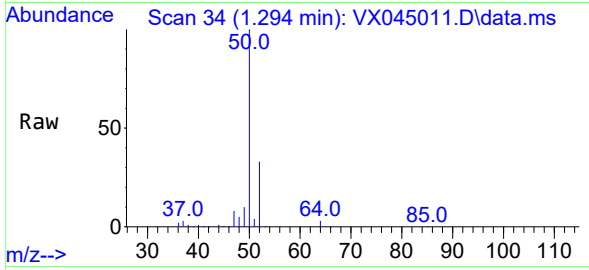




#3
 Chloromethane
 Concen: 102.45 ug/l
 RT: 1.294 min Scan# 34
 Delta R.T. -0.006 min
 Lab File: VX045011.D
 Acq: 21 Feb 2025 11:07

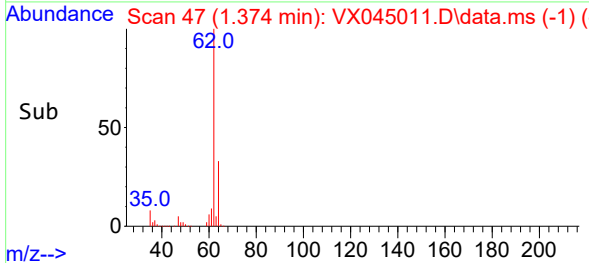
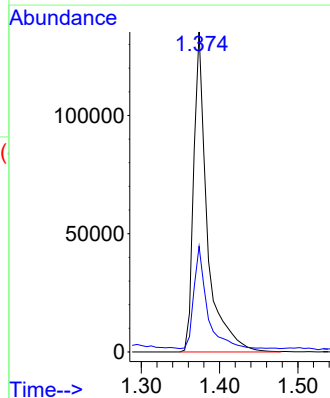
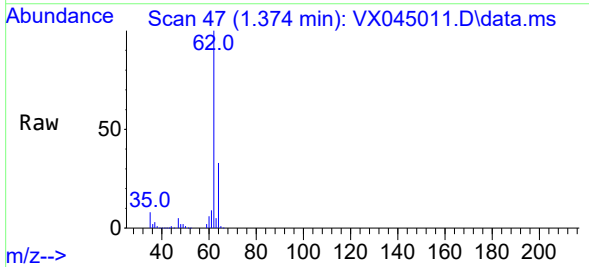
Instrument :
 MSVOA_N
 ClientSampled :

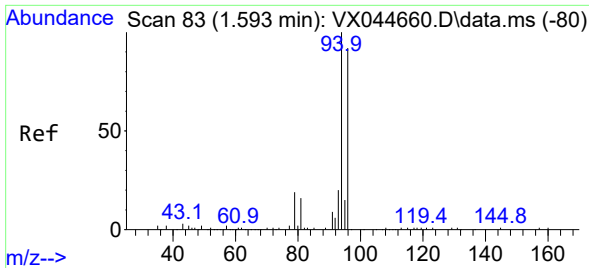
Tgt Ion: 50 Resp: 166067
 Ion Ratio Lower Upper
 50 100
 52 32.6 26.5 39.7



#4
 Vinyl Chloride
 Concen: 102.92 ug/l
 RT: 1.374 min Scan# 47
 Delta R.T. 0.000 min
 Lab File: VX045011.D
 Acq: 21 Feb 2025 11:07

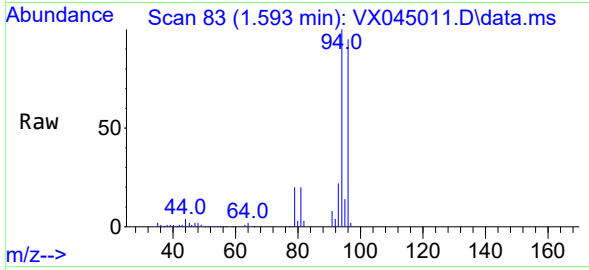
Tgt Ion: 62 Resp: 163236
 Ion Ratio Lower Upper
 62 100
 64 31.9 27.3 40.9



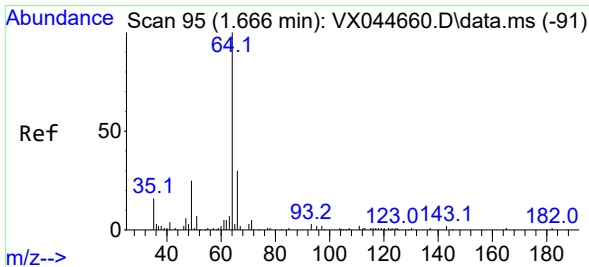
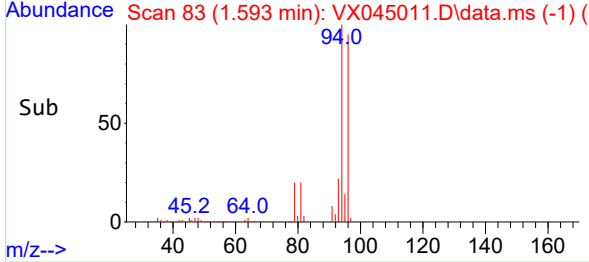
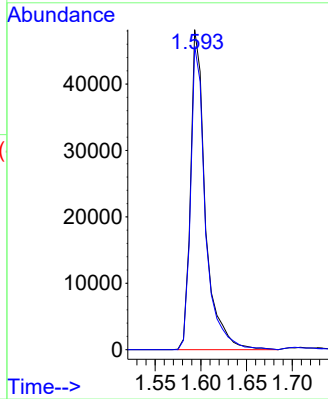


#5
 Bromomethane
 Concen: 142.33 ug/l
 RT: 1.593 min Scan# 81
 Delta R.T. 0.000 min
 Lab File: VX045011.D
 Acq: 21 Feb 2025 11:07

Instrument :
 MSVOA_N
 ClientSampleId :

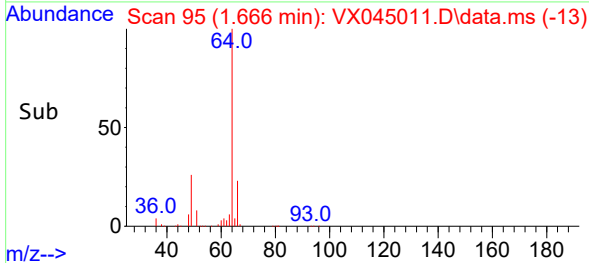
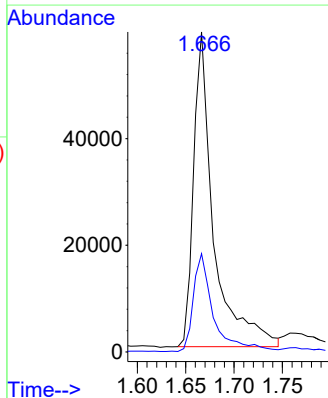
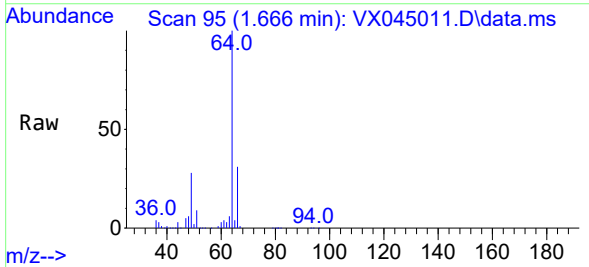


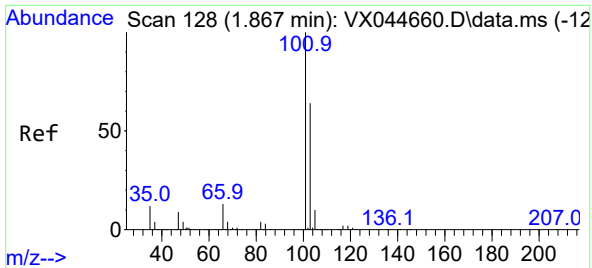
Tgt Ion: 94 Resp: 54558
 Ion Ratio Lower Upper
 94 100
 96 94.9 73.3 109.9



#6
 Chloroethane
 Concen: 336.76 ug/l
 RT: 1.666 min Scan# 95
 Delta R.T. 0.000 min
 Lab File: VX045011.D
 Acq: 21 Feb 2025 11:07

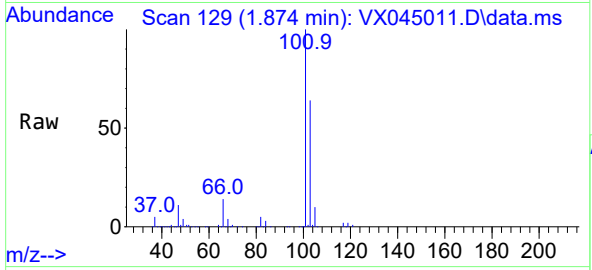
Tgt Ion: 64 Resp: 84688
 Ion Ratio Lower Upper
 64 100
 66 31.1 23.8 35.6



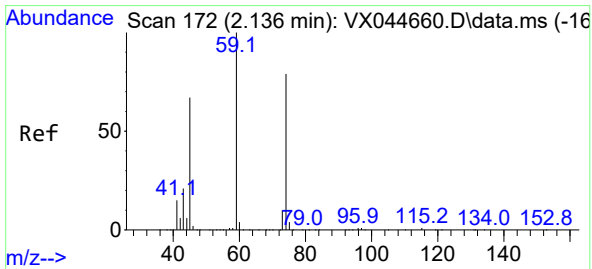
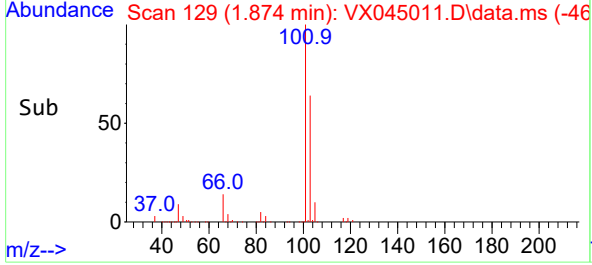
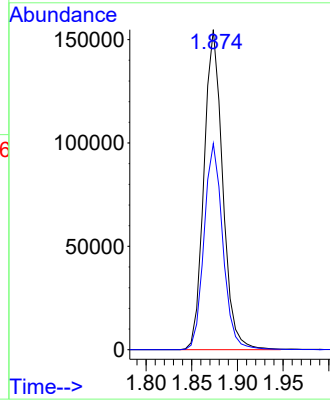


#7
 Trichlorofluoromethane
 Concen: 126.69 ug/l
 RT: 1.874 min Scan# 11
 Delta R.T. 0.006 min
 Lab File: VX045011.D
 Acq: 21 Feb 2025 11:07

Instrument : MSVOA_N
 ClientSampleId :

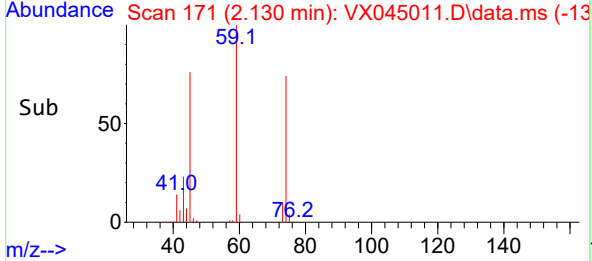
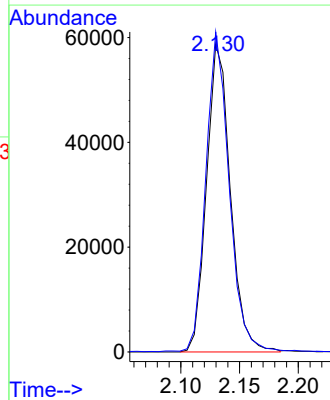
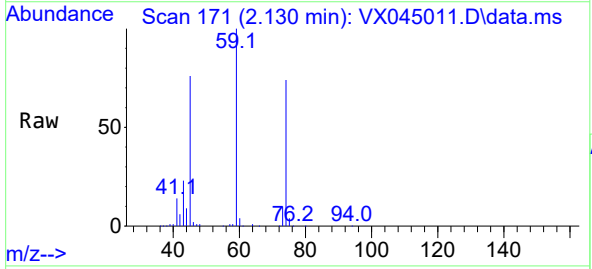


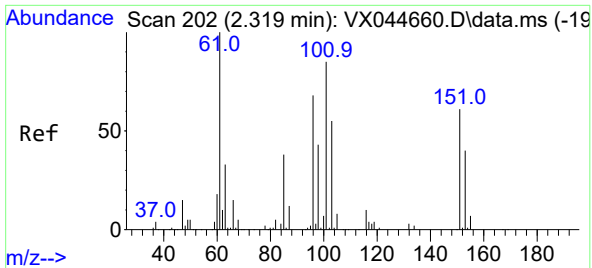
Tgt Ion:101 Resp: 220045
 Ion Ratio Lower Upper
 101 100
 103 64.4 51.1 76.7



#8
 Diethyl Ether
 Concen: 123.81 ug/l
 RT: 2.130 min Scan# 171
 Delta R.T. -0.006 min
 Lab File: VX045011.D
 Acq: 21 Feb 2025 11:07

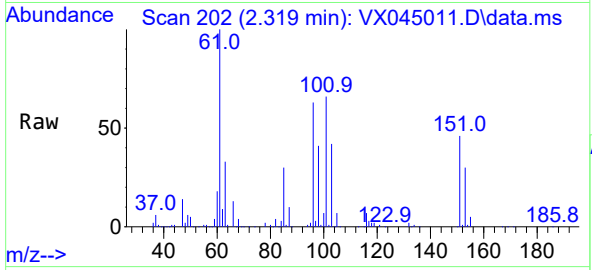
Tgt Ion: 74 Resp: 82964
 Ion Ratio Lower Upper
 74 100
 45 100.7 18.8 168.8



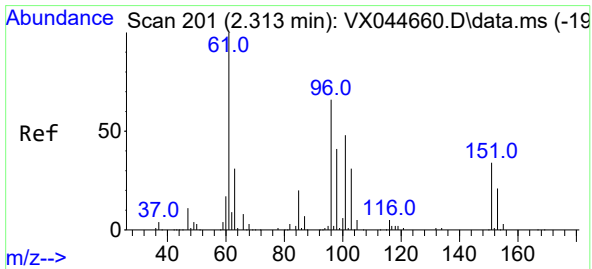
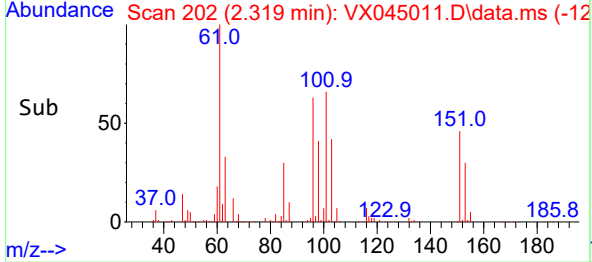
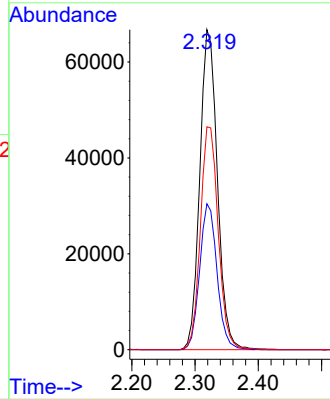


#9
 1,1,2-Trichlorotrifluoroethane
 Concen: 104.06 ug/l
 RT: 2.319 min Scan# 202
 Delta R.T. 0.000 min
 Lab File: VX045011.D
 Acq: 21 Feb 2025 11:07

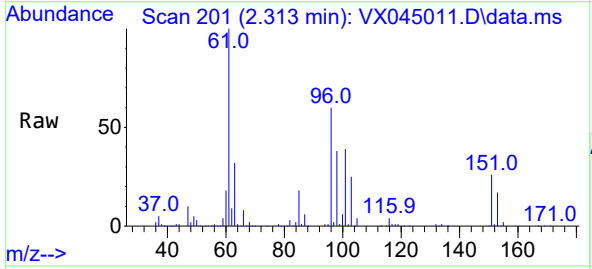
Instrument :
 MSVOA_N
 ClientSampleId :



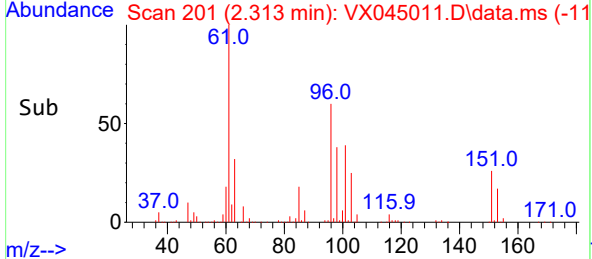
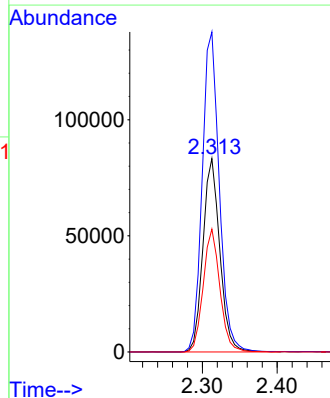
Tgt Ion: 101 Resp: 129494
 Ion Ratio Lower Upper
 101 100
 85 45.0 0.0 88.0
 151 70.6 0.0 147.0

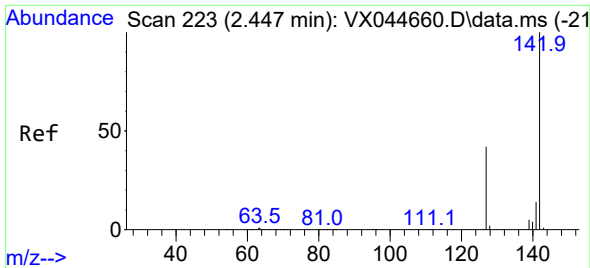


#10
 1,1-Dichloroethene
 Concen: 102.07 ug/l
 RT: 2.313 min Scan# 201
 Delta R.T. 0.000 min
 Lab File: VX045011.D
 Acq: 21 Feb 2025 11:07



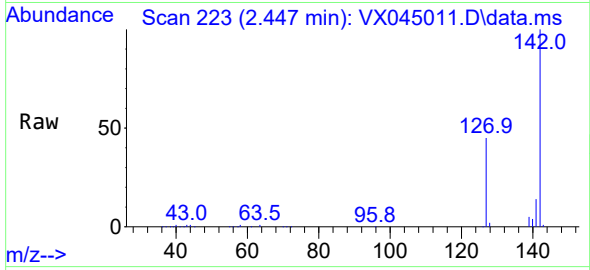
Tgt Ion: 96 Resp: 130666
 Ion Ratio Lower Upper
 96 100
 61 165.4 121.6 182.4
 98 63.5 50.3 75.5



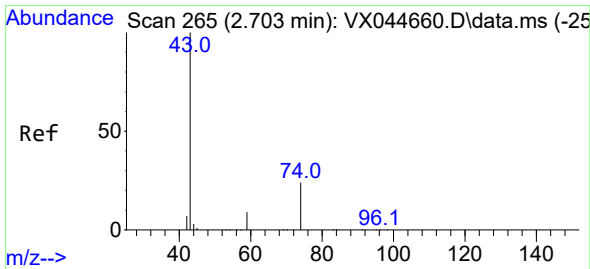
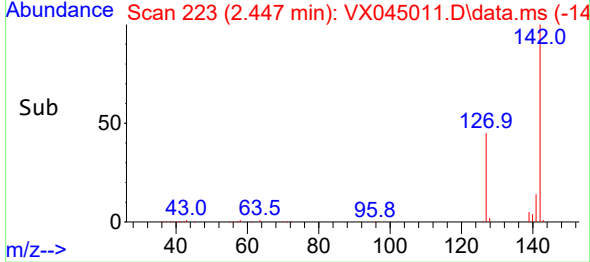
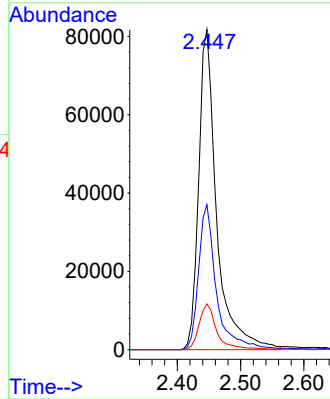


#11
 Methyl Iodide
 Concen: 91.23 ug/l
 RT: 2.447 min Scan# 21
 Delta R.T. 0.000 min
 Lab File: VX045011.D
 Acq: 21 Feb 2025 11:07

Instrument :
 MSVOA_N
 ClientSampleId :

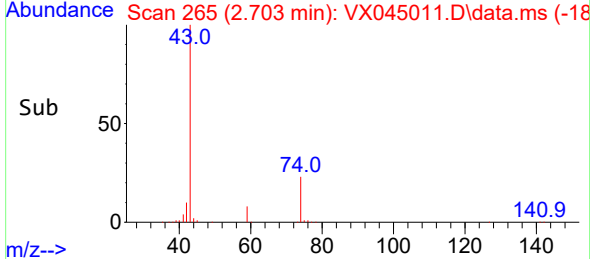
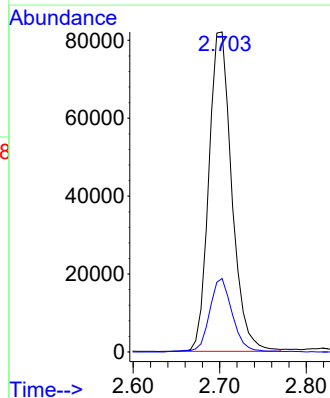
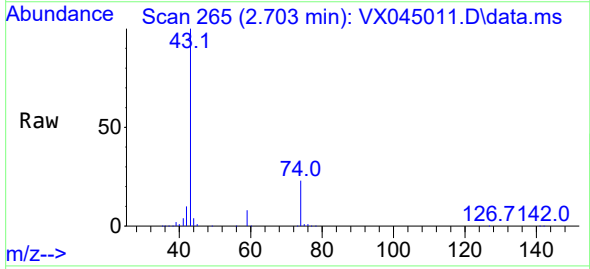


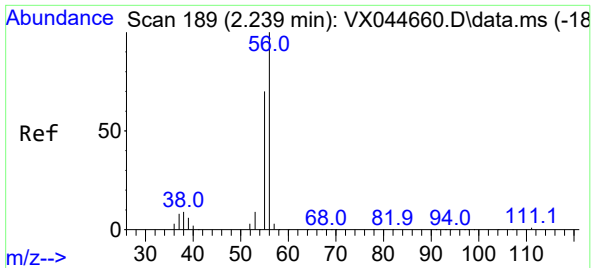
Tgt Ion:142 Resp: 161844
 Ion Ratio Lower Upper
 142 100
 127 45.3 20.8 62.4
 141 14.3 7.0 20.9



#12
 Methyl Acetate
 Concen: 80.72 ug/l
 RT: 2.703 min Scan# 265
 Delta R.T. 0.000 min
 Lab File: VX045011.D
 Acq: 21 Feb 2025 11:07

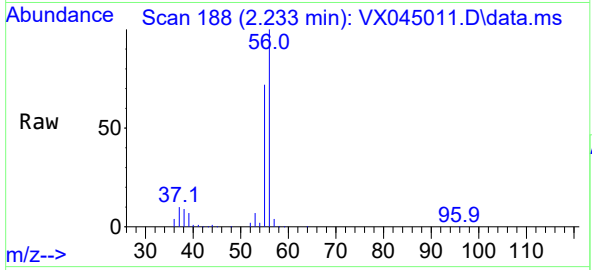
Tgt Ion: 43 Resp: 150865
 Ion Ratio Lower Upper
 43 100
 74 22.8 19.4 29.2



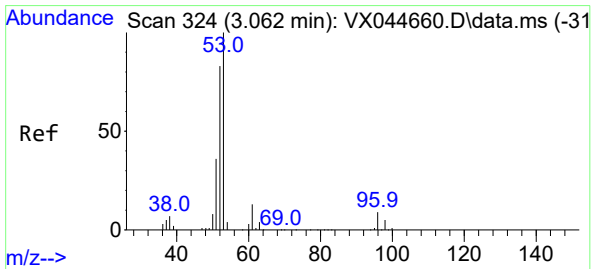
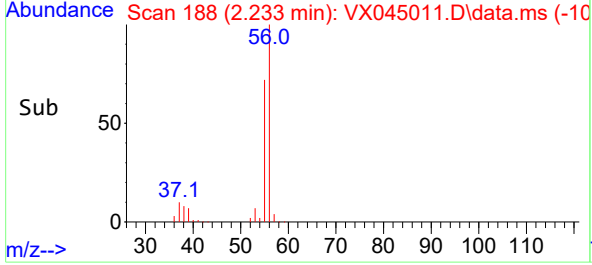
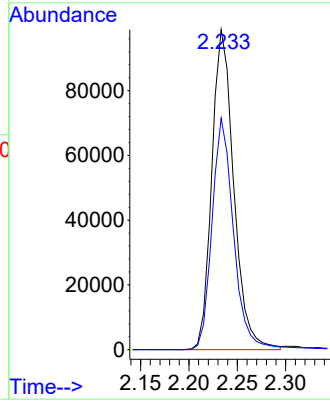


#13
 Acrolein
 Concen: 755.26 ug/l
 RT: 2.233 min Scan# 189
 Delta R.T. -0.006 min
 Lab File: VX045011.D
 Acq: 21 Feb 2025 11:07

Instrument :
 MSVOA_N
 ClientSampleId :

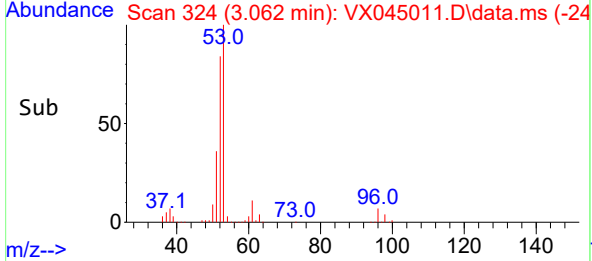
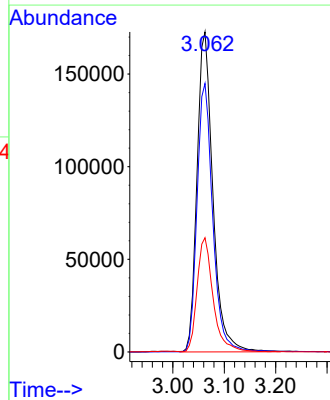
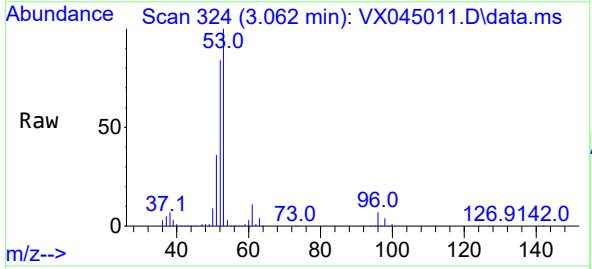


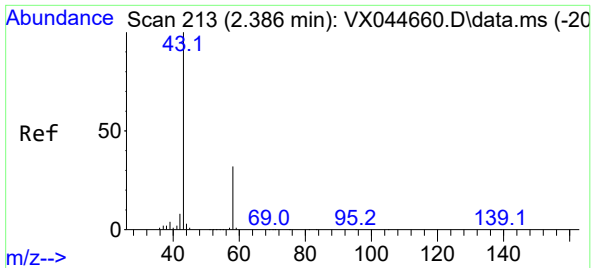
Tgt Ion: 56 Resp: 156104
 Ion Ratio Lower Upper
 56 100
 55 71.5 57.5 86.3



#14
 Acrylonitrile
 Concen: 544.62 ug/l
 RT: 3.062 min Scan# 324
 Delta R.T. 0.000 min
 Lab File: VX045011.D
 Acq: 21 Feb 2025 11:07

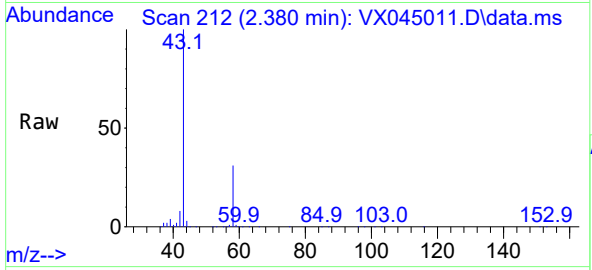
Tgt Ion: 53 Resp: 370914
 Ion Ratio Lower Upper
 53 100
 52 82.7 41.4 124.2
 51 35.9 18.1 54.4



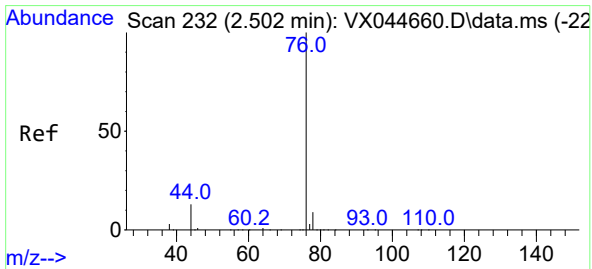
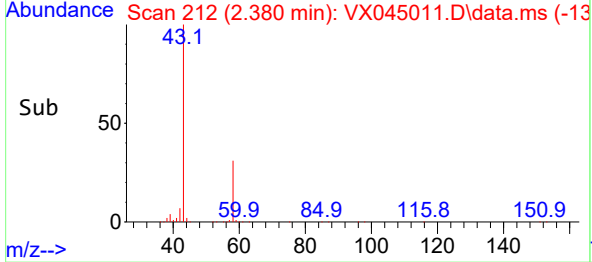
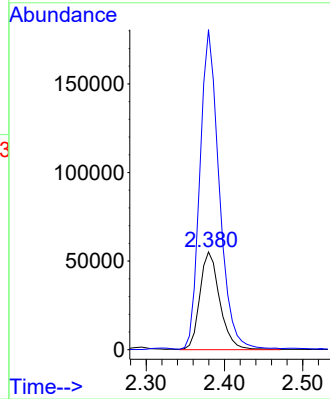


#15
 Acetone
 Concen: 533.85 ug/l
 RT: 2.380 min Scan# 213
 Delta R.T. -0.006 min
 Lab File: VX045011.D
 Acq: 21 Feb 2025 11:07

Instrument :
 MSVOA_N
 ClientSampleId :

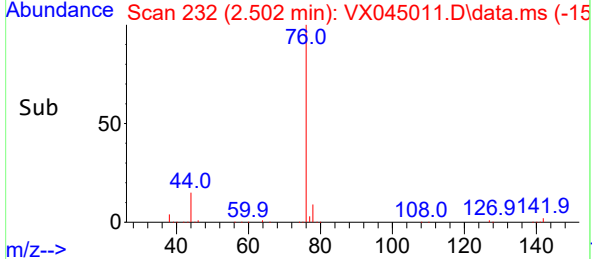
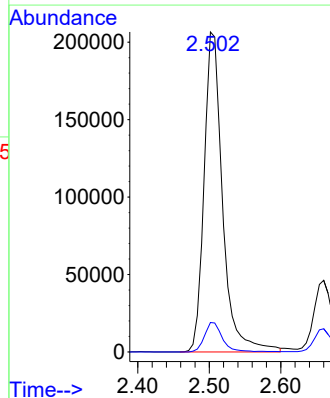
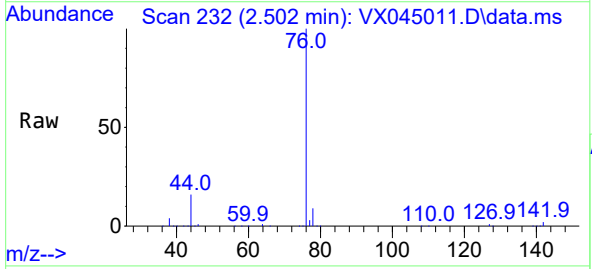


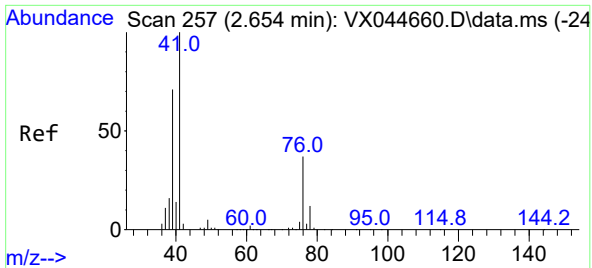
Tgt Ion: 58 Resp: 97560
 Ion Ratio Lower Upper
 58 100
 43 327.6 251.0 376.4



#16
 Carbon Disulfide
 Concen: 104.52 ug/l
 RT: 2.502 min Scan# 232
 Delta R.T. 0.000 min
 Lab File: VX045011.D
 Acq: 21 Feb 2025 11:07

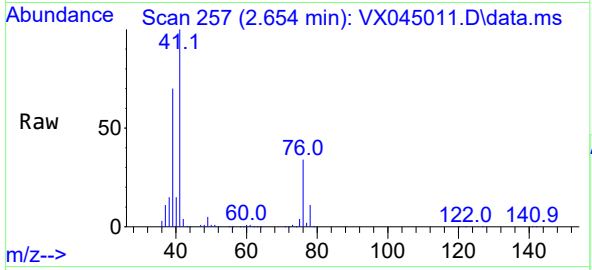
Tgt Ion: 76 Resp: 371874
 Ion Ratio Lower Upper
 76 100
 78 9.2 7.3 10.9



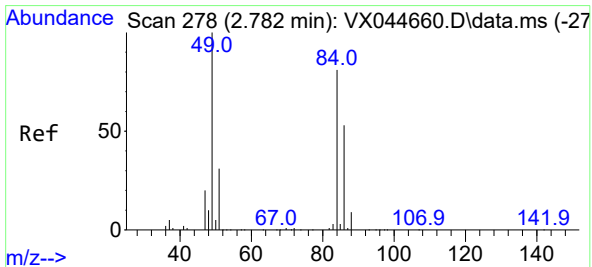
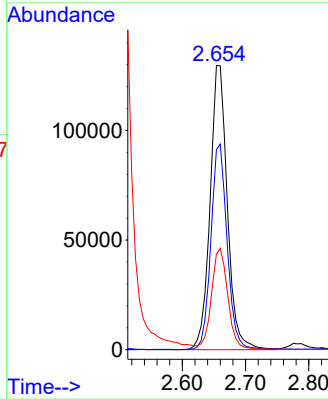
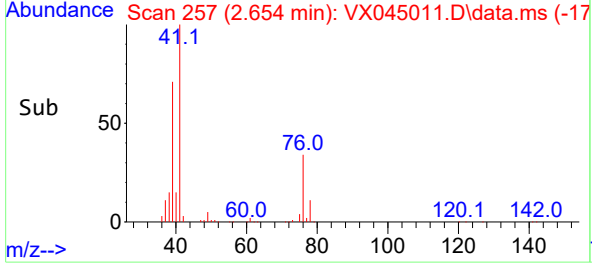


#17
 Allyl chloride
 Concen: 106.58 ug/l
 RT: 2.654 min Scan# 21
 Delta R.T. 0.000 min
 Lab File: VX045011.D
 Acq: 21 Feb 2025 11:07

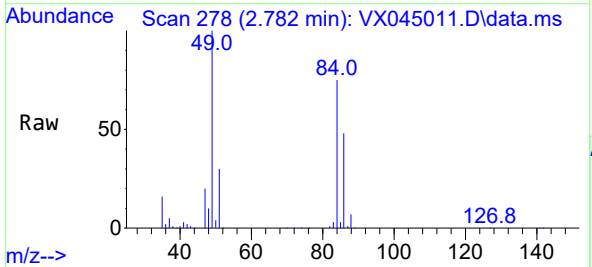
Instrument :
 MSVOA_N
 ClientSampleId :



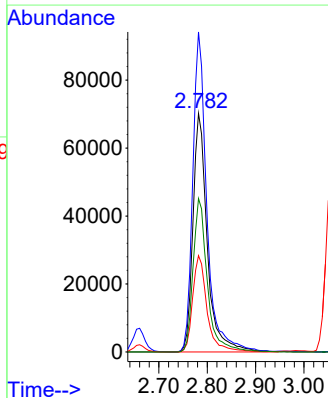
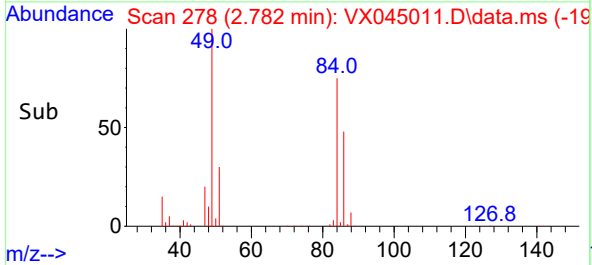
Tgt Ion: 41 Resp: 246065
 Ion Ratio Lower Upper
 41 100
 39 70.4 35.6 106.8
 76 33.5 18.9 56.5

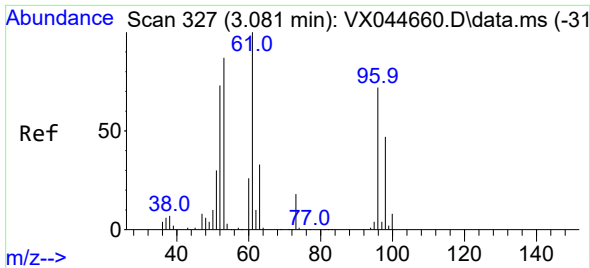


#18
 Methylene Chloride
 Concen: 101.16 ug/l
 RT: 2.782 min Scan# 278
 Delta R.T. 0.000 min
 Lab File: VX045011.D
 Acq: 21 Feb 2025 11:07



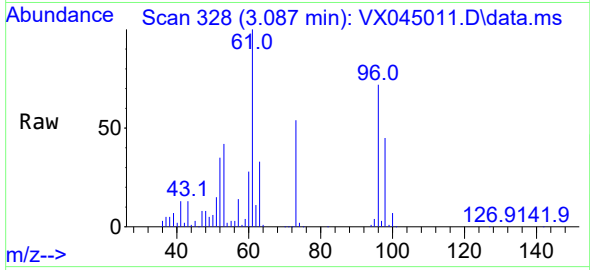
Tgt Ion: 84 Resp: 144938
 Ion Ratio Lower Upper
 84 100
 49 134.0 98.3 147.5
 51 40.4 30.6 46.0
 86 64.3 52.6 78.8



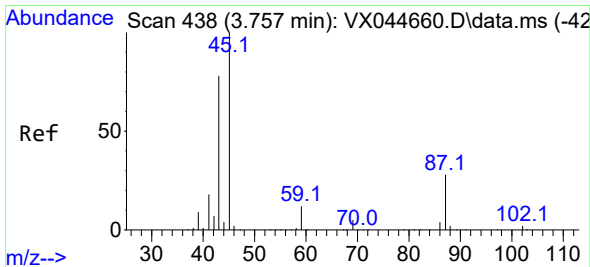
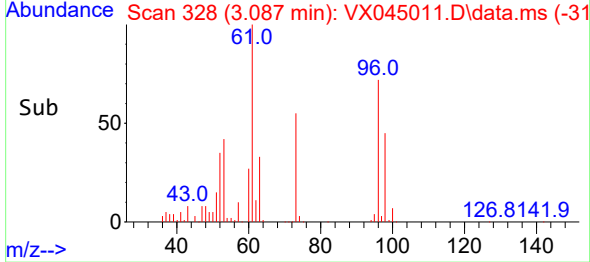
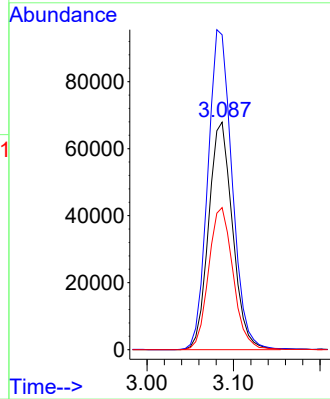


#19
 trans-1,2-Dichloroethene
 Concen: 102.56 ug/l
 RT: 3.087 min Scan# 31
 Delta R.T. 0.006 min
 Lab File: VX045011.D
 Acq: 21 Feb 2025 11:07

Instrument :
 MSVOA_N
 ClientSampleId :

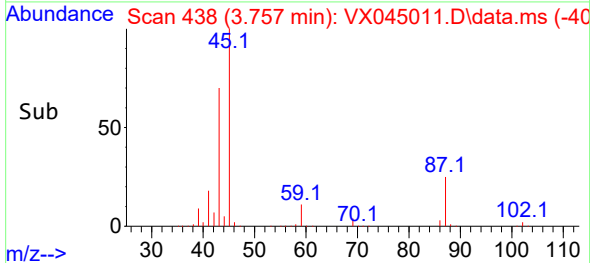
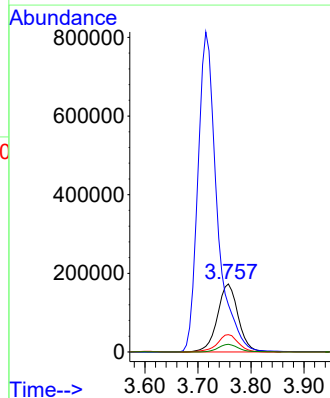
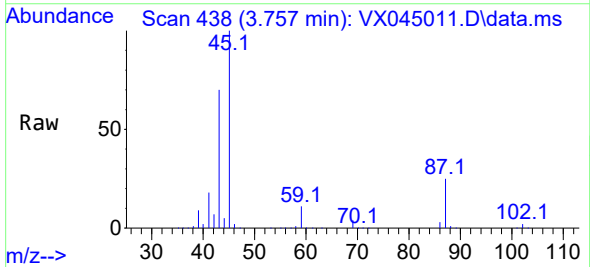


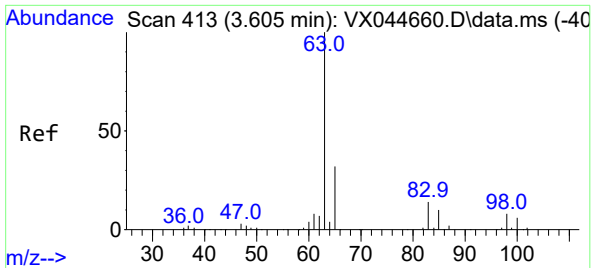
Tgt Ion: 96 Resp: 130562
 Ion Ratio Lower Upper
 96 100
 61 138.3 111.5 167.3
 98 62.5 52.6 79.0



#20
 Diisopropyl ether
 Concen: 112.20 ug/l
 RT: 3.757 min Scan# 438
 Delta R.T. 0.000 min
 Lab File: VX045011.D
 Acq: 21 Feb 2025 11:07

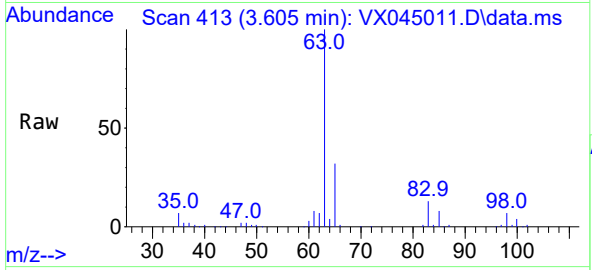
Tgt Ion: 45 Resp: 470167
 Ion Ratio Lower Upper
 45 100
 43 69.5 62.6 94.0
 87 25.4 22.7 34.1
 59 11.3 9.4 14.2



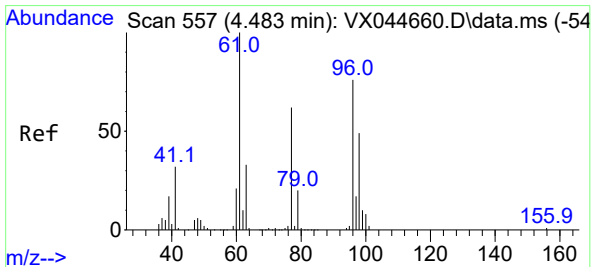
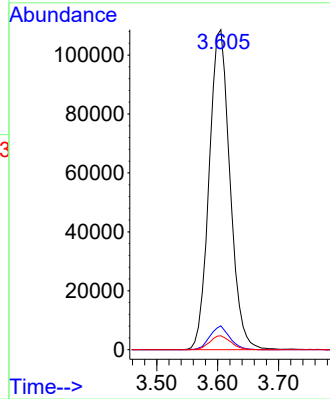
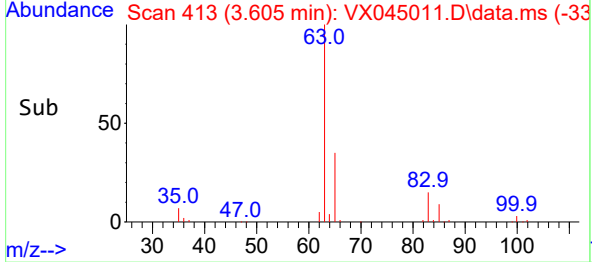


#21
 1,1-Dichloroethane
 Concen: 103.96 ug/l
 RT: 3.605 min Scan# 411
 Delta R.T. 0.000 min
 Lab File: VX045011.D
 Acq: 21 Feb 2025 11:07

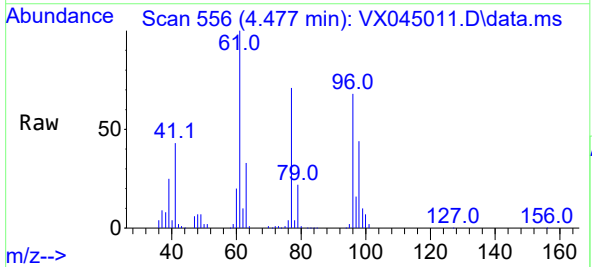
Instrument :
 MSVOA_N
 ClientSampleId :



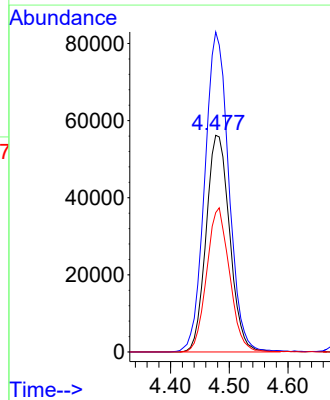
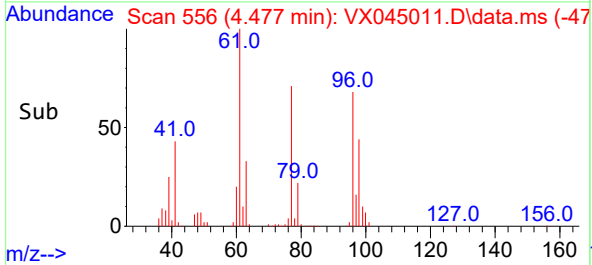
Tgt Ion: 63 Resp: 258430
 Ion Ratio Lower Upper
 63 100
 98 7.5 4.0 11.9
 100 4.4 2.8 8.3

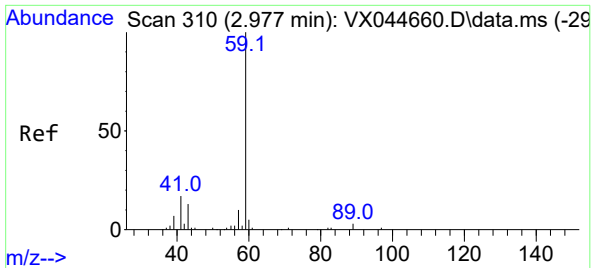


#22
 cis-1,2-Dichloroethene
 Concen: 99.60 ug/l
 RT: 4.477 min Scan# 556
 Delta R.T. -0.006 min
 Lab File: VX045011.D
 Acq: 21 Feb 2025 11:07



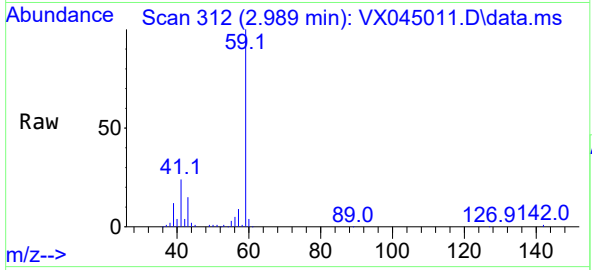
Tgt Ion: 96 Resp: 156933
 Ion Ratio Lower Upper
 96 100
 61 150.2 115.2 172.8
 98 64.5 51.8 77.6



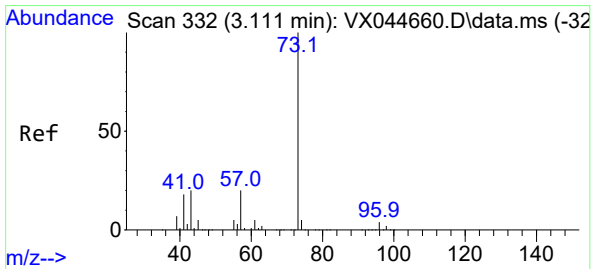
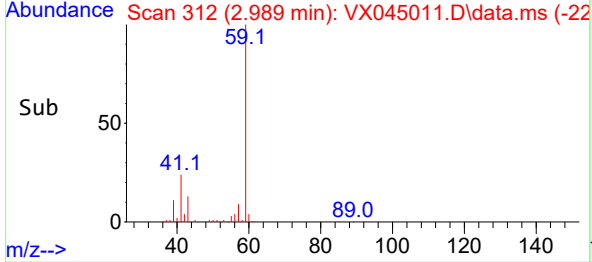
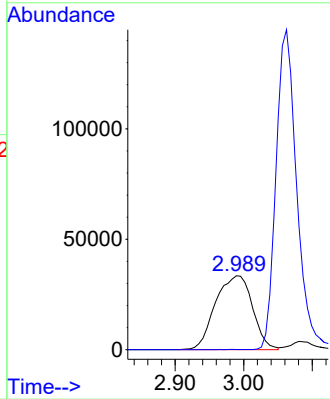


#23
 tert-Butyl Alcohol
 Concen: 381.20 ug/l
 RT: 2.989 min Scan# 310
 Delta R.T. 0.012 min
 Lab File: VX045011.D
 Acq: 21 Feb 2025 11:07

Instrument :
 MSVOA_N
 ClientSampleId :

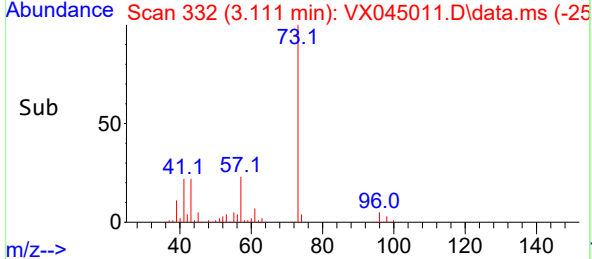
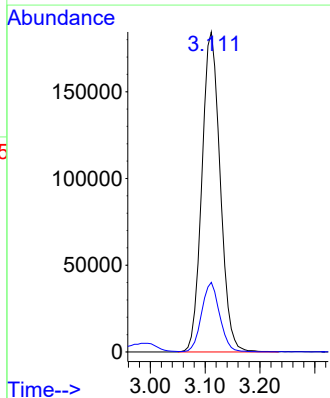
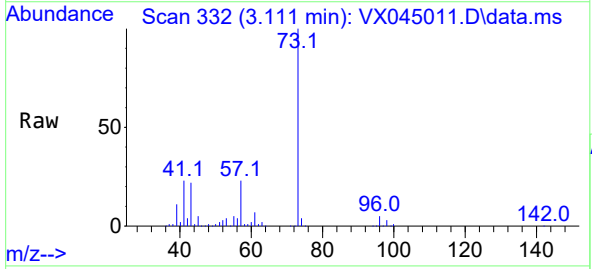


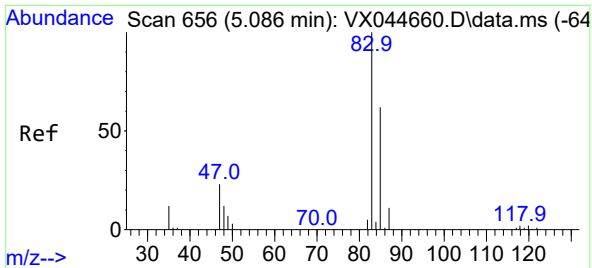
Tgt Ion: 59 Resp: 125570
 Ion Ratio Lower Upper
 59 100
 52 0.1 0.1 0.1#



#24
 Methyl tert-Butyl Ether
 Concen: 96.14 ug/l
 RT: 3.111 min Scan# 332
 Delta R.T. 0.000 min
 Lab File: VX045011.D
 Acq: 21 Feb 2025 11:07

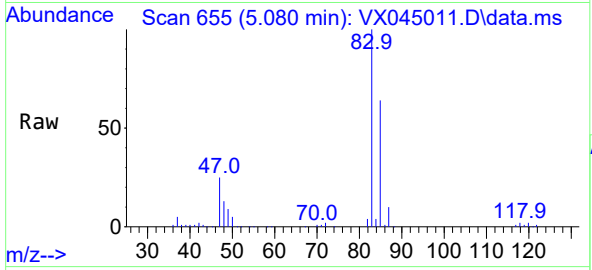
Tgt Ion: 73 Resp: 426471
 Ion Ratio Lower Upper
 73 100
 43 21.3 16.9 25.3



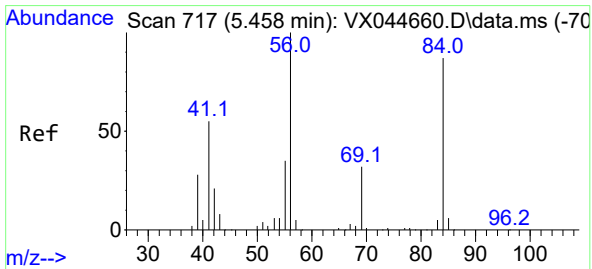
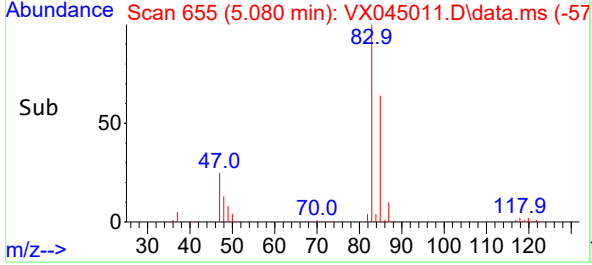
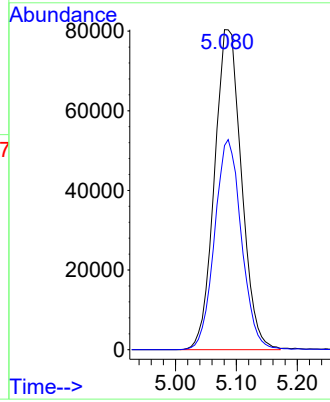


#25
 Chloroform
 Concen: 100.42 ug/l
 RT: 5.080 min Scan# 611
 Delta R.T. -0.006 min
 Lab File: VX045011.D
 Acq: 21 Feb 2025 11:07

Instrument :
 MSVOA_N
 ClientSampleId :

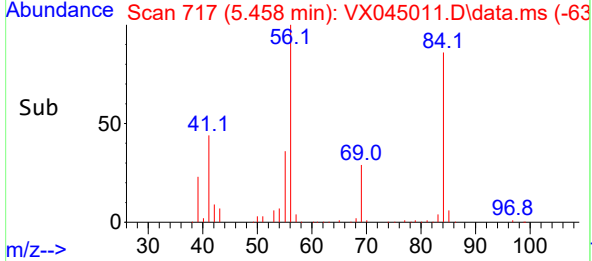
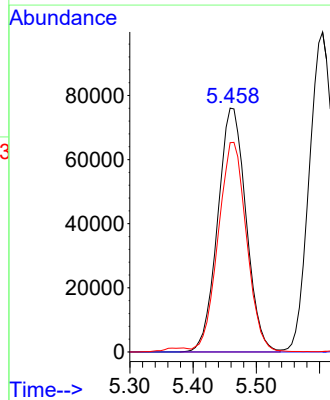
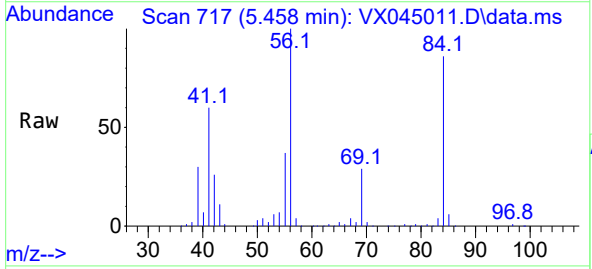


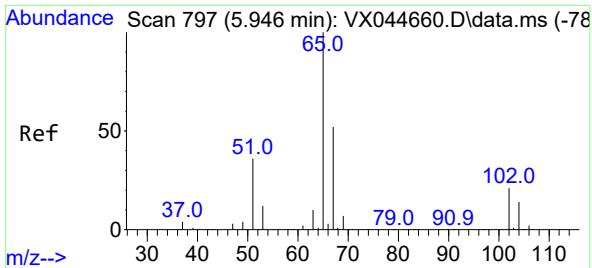
Tgt Ion: 83 Resp: 248045
 Ion Ratio Lower Upper
 83 100
 85 63.7 49.4 74.2



#26
 Cyclohexane
 Concen: 113.38 ug/l
 RT: 5.458 min Scan# 717
 Delta R.T. 0.000 min
 Lab File: VX045011.D
 Acq: 21 Feb 2025 11:07

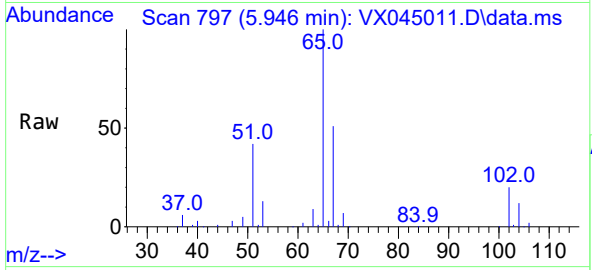
Tgt Ion: 56 Resp: 236876
 Ion Ratio Lower Upper
 56 100
 89 0.0 0.0 0.0
 84 86.0 72.2 108.4



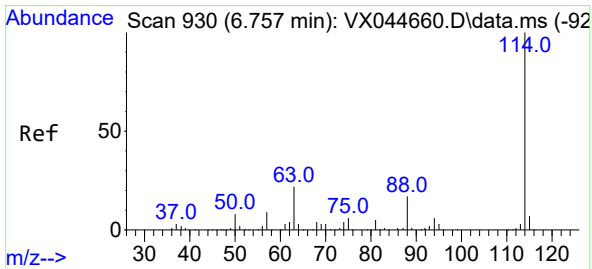
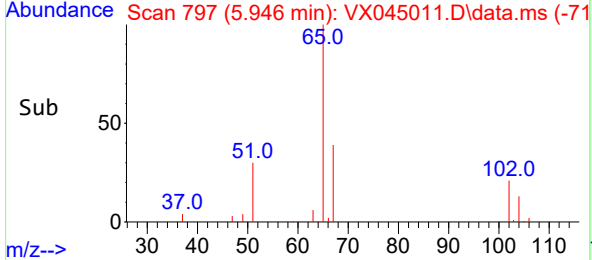
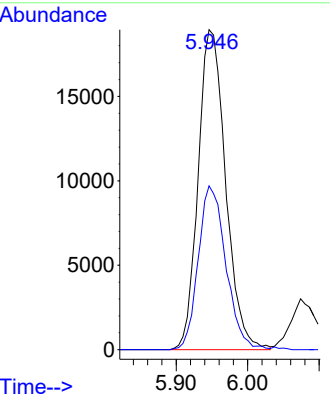


#27
 1,2-Dichloroethane-d4
 Concen: 30.24 ug/l
 RT: 5.946 min Scan# 797
 Delta R.T. 0.000 min
 Lab File: VX045011.D
 Acq: 21 Feb 2025 11:07

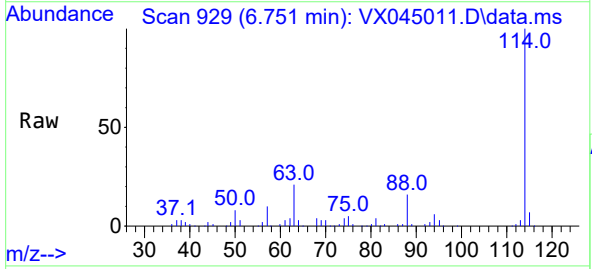
Instrument : MSVOA_N
 ClientSampleId :



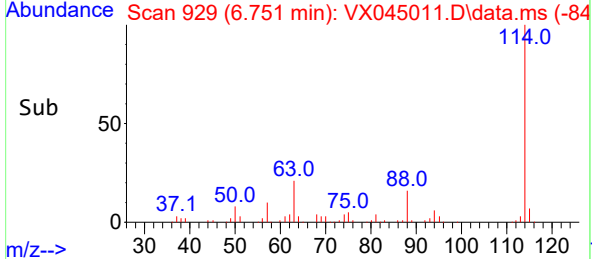
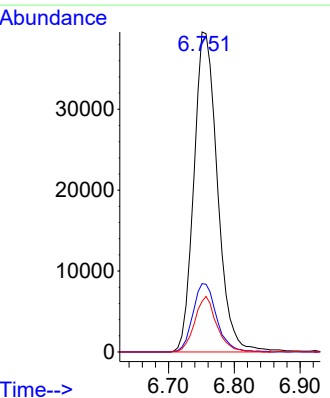
Tgt Ion: 65 Resp: 50601
 Ion Ratio Lower Upper
 65 100
 67 50.9 41.4 62.2

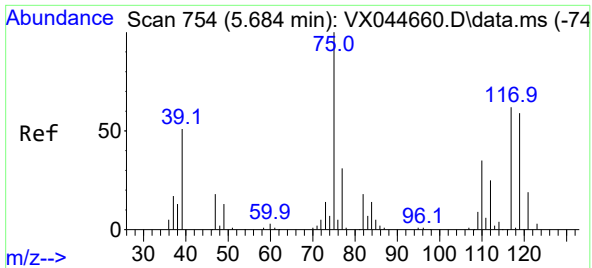


#28
 1,4-Difluorobenzene
 Concen: 30.00 ug/l
 RT: 6.751 min Scan# 929
 Delta R.T. -0.006 min
 Lab File: VX045011.D
 Acq: 21 Feb 2025 11:07



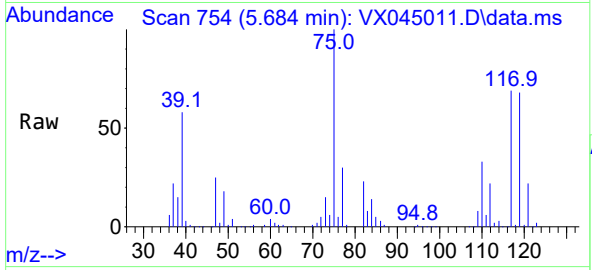
Tgt Ion: 114 Resp: 98516
 Ion Ratio Lower Upper
 114 100
 63 21.6 16.6 24.8
 88 16.3 13.4 20.2



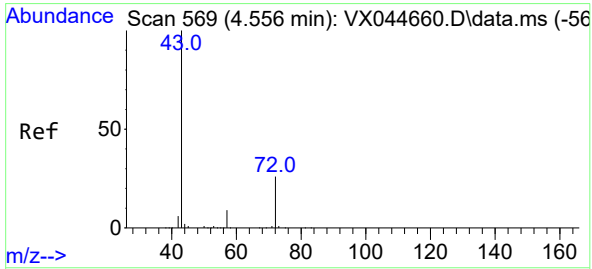
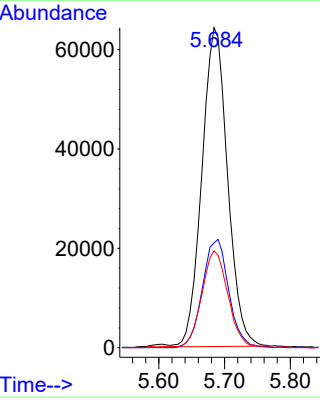
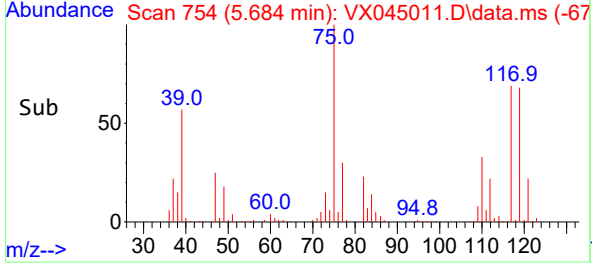


#29
 1,1-Dichloropropene
 Concen: 101.90 ug/l
 RT: 5.684 min Scan# 71
 Delta R.T. 0.000 min
 Lab File: VX045011.D
 Acq: 21 Feb 2025 11:07

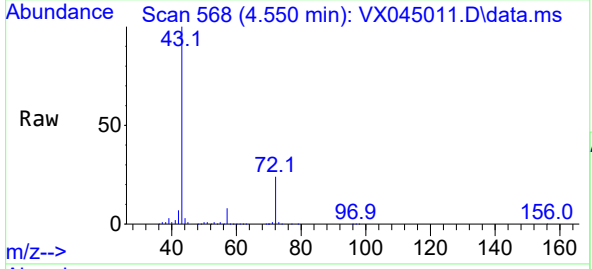
Instrument : MSVOA_N
 ClientSampleId :



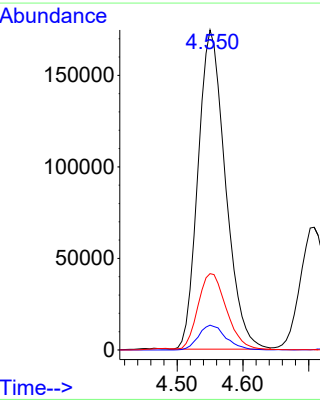
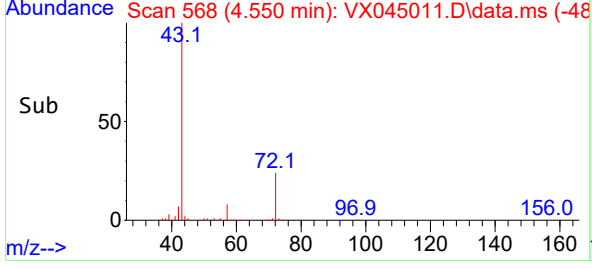
Tgt Ion: 75 Resp: 174620
 Ion Ratio Lower Upper
 75 100
 110 34.7 0.0 69.4
 77 30.9 0.0 59.8

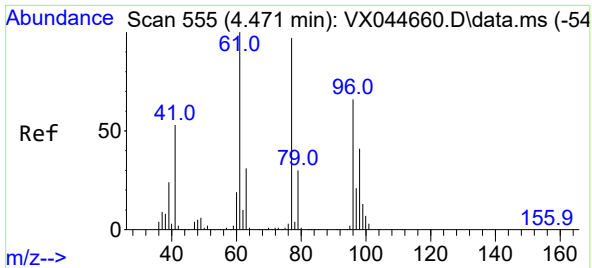


#30
 2-Butanone
 Concen: 536.53 ug/l
 RT: 4.550 min Scan# 568
 Delta R.T. -0.006 min
 Lab File: VX045011.D
 Acq: 21 Feb 2025 11:07



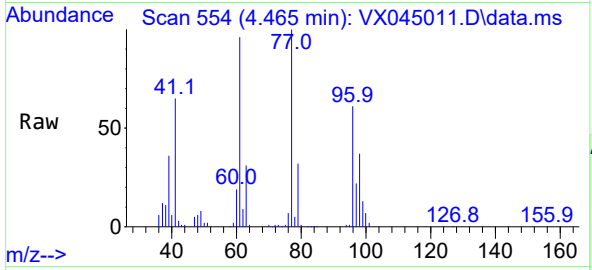
Tgt Ion: 43 Resp: 505036
 Ion Ratio Lower Upper
 43 100
 57 7.8 6.4 9.6
 72 24.7 21.5 32.3



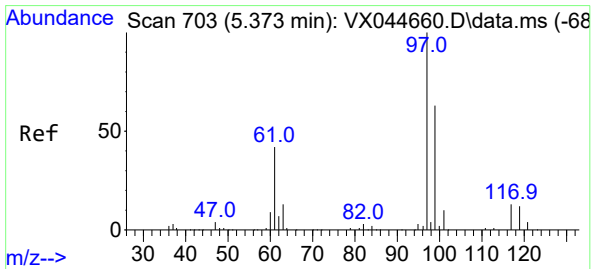
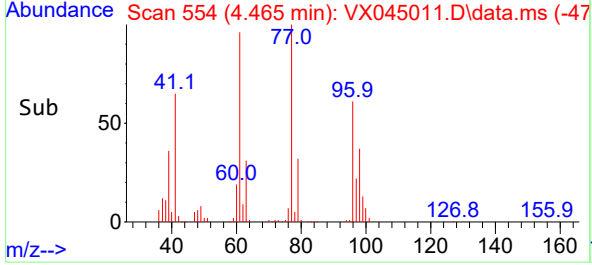
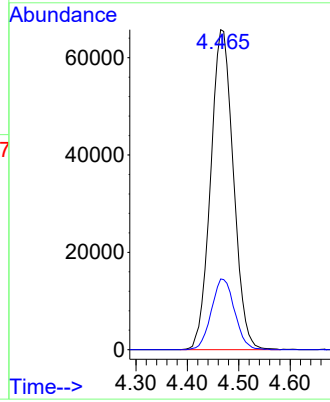


#31
 2,2-Dichloropropane
 Concen: 85.34 ug/l
 RT: 4.465 min Scan# 511
 Delta R.T. -0.006 min
 Lab File: VX045011.D
 Acq: 21 Feb 2025 11:07

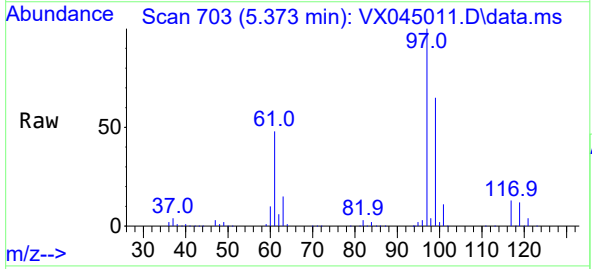
Instrument :
 MSVOA_N
 ClientSampleId :



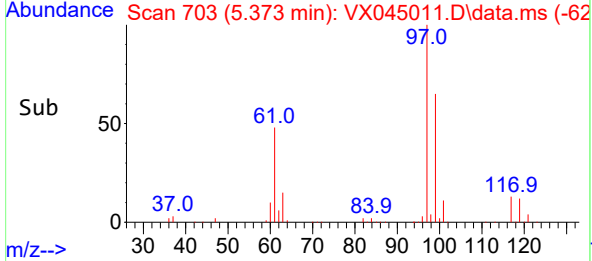
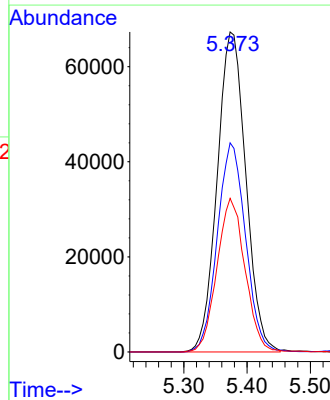
Tgt Ion: 77 Resp: 202370
 Ion Ratio Lower Upper
 77 100
 97 22.5 18.6 27.8

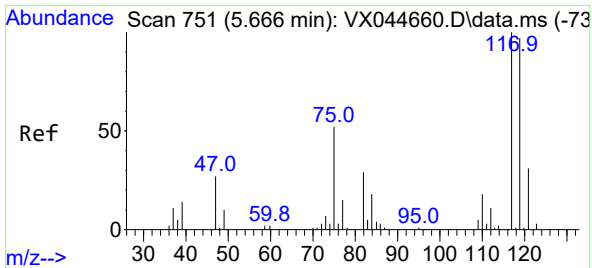


#32
 1,1,1-Trichloroethane
 Concen: 93.19 ug/l
 RT: 5.373 min Scan# 703
 Delta R.T. 0.000 min
 Lab File: VX045011.D
 Acq: 21 Feb 2025 11:07



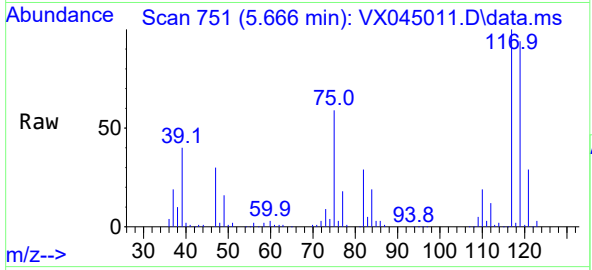
Tgt Ion: 97 Resp: 211623
 Ion Ratio Lower Upper
 97 100
 99 64.4 50.5 75.7
 61 46.9 34.6 51.8



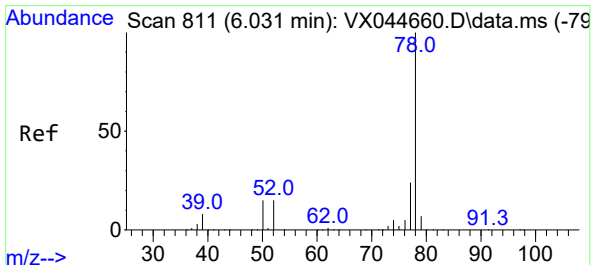
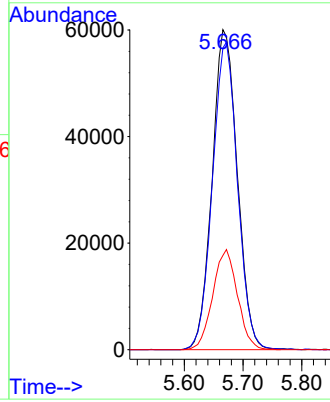
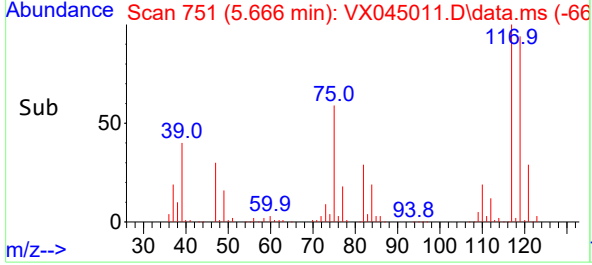


#33
 Carbon Tetrachloride
 Concen: 93.28 ug/l
 RT: 5.666 min Scan# 751
 Delta R.T. 0.000 min
 Lab File: VX045011.D
 Acq: 21 Feb 2025 11:07

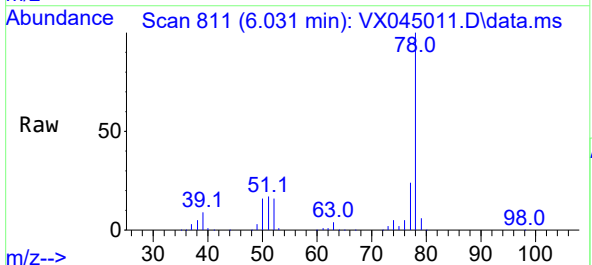
Instrument :
 MSVOA_N
 ClientSampleId :



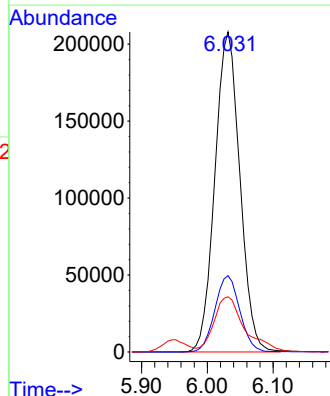
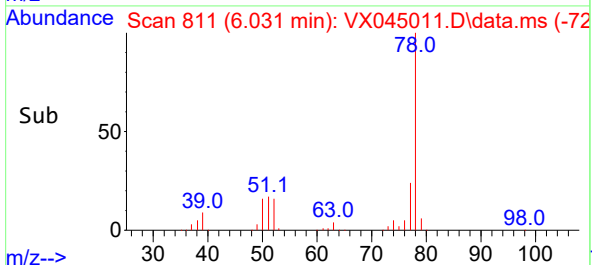
Tgt Ion:117 Resp: 178685
 Ion Ratio Lower Upper
 117 100
 119 94.3 77.3 115.9
 121 29.5 24.6 37.0

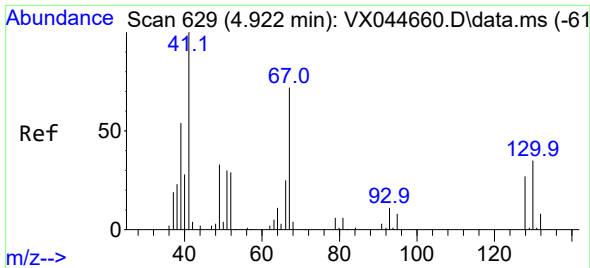


#34
 Benzene
 Concen: 100.30 ug/l
 RT: 6.031 min Scan# 811
 Delta R.T. 0.000 min
 Lab File: VX045011.D
 Acq: 21 Feb 2025 11:07



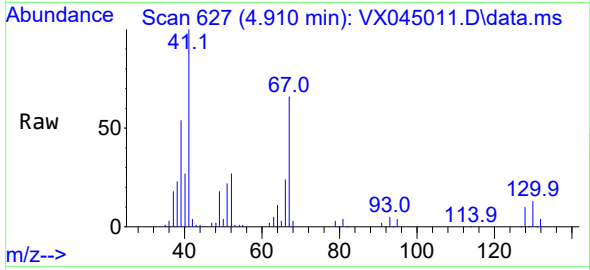
Tgt Ion: 78 Resp: 548369
 Ion Ratio Lower Upper
 78 100
 77 23.9 19.3 28.9
 51 16.4 12.7 19.1



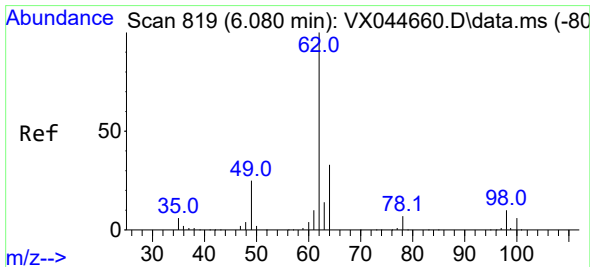
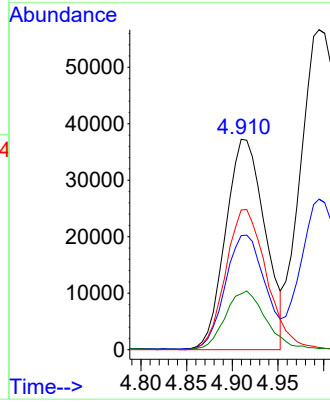
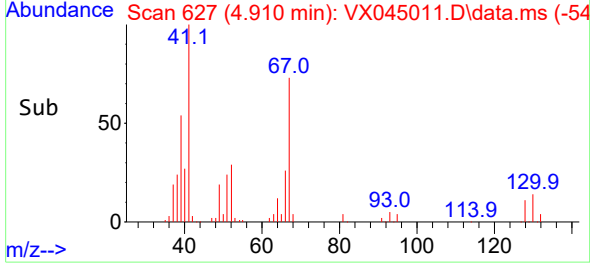


#35
 Methacrylonitrile
 Concen: 106.42 ug/l
 RT: 4.910 min Scan# 61
 Delta R.T. -0.012 min
 Lab File: VX045011.D
 Acq: 21 Feb 2025 11:07

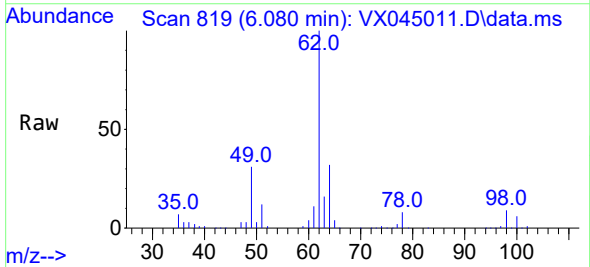
Instrument :
 MSVOA_N
 ClientSampleId :



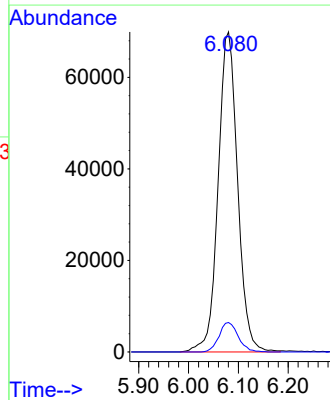
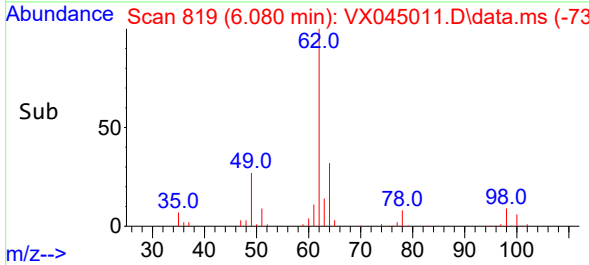
Tgt Ion: 41 Resp: 111962
 Ion Ratio Lower Upper
 41 100
 39 53.8 27.1 81.3
 67 66.4 35.8 107.4
 52 26.4 14.4 43.2

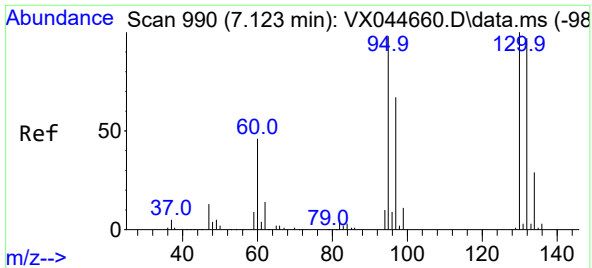


#36
 1,2-Dichloroethane
 Concen: 96.92 ug/l
 RT: 6.080 min Scan# 819
 Delta R.T. 0.000 min
 Lab File: VX045011.D
 Acq: 21 Feb 2025 11:07



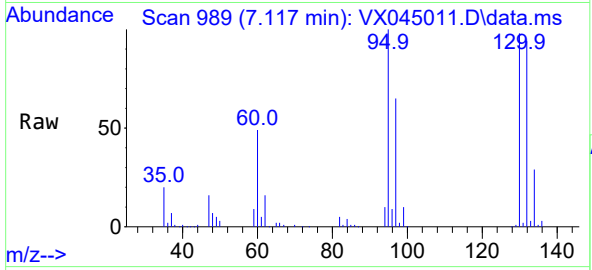
Tgt Ion: 62 Resp: 189437
 Ion Ratio Lower Upper
 62 100
 98 9.1 7.4 11.2



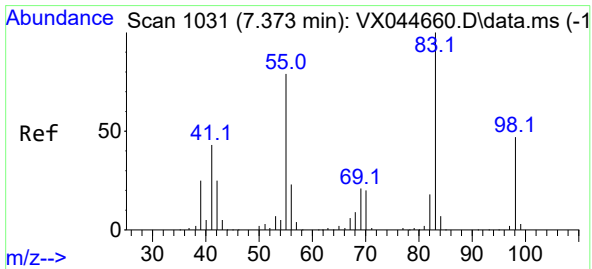
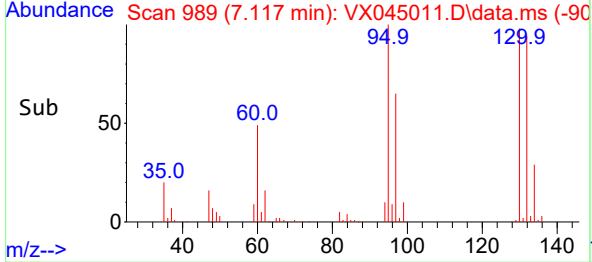
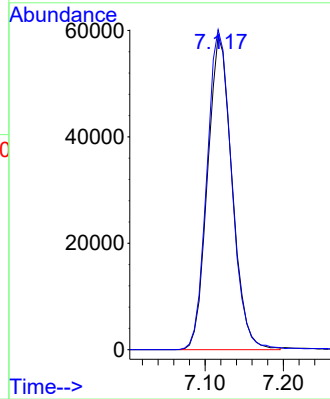


#37
 Trichloroethene
 Concen: 97.08 ug/l
 RT: 7.117 min Scan# 989
 Delta R.T. -0.006 min
 Lab File: VX045011.D
 Acq: 21 Feb 2025 11:07

Instrument :
 MSVOA_N
 ClientSampleId :

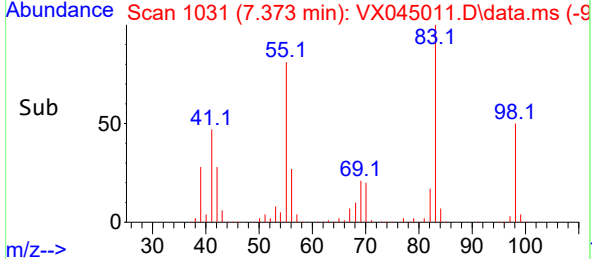
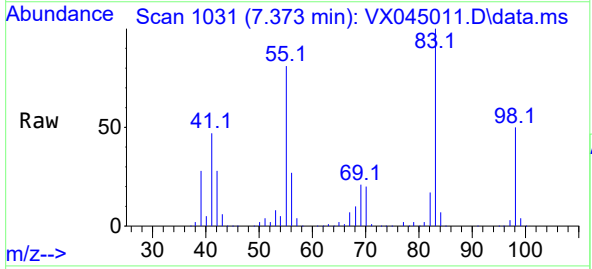
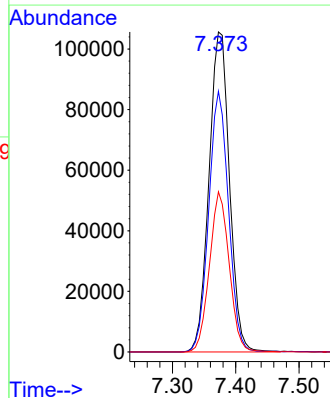


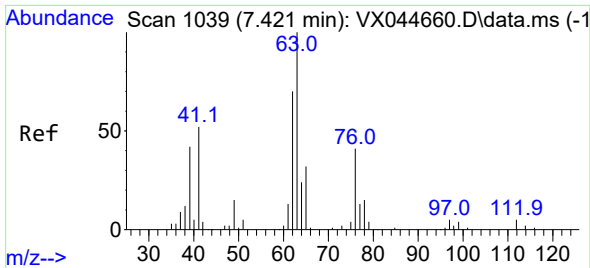
Tgt Ion:130 Resp: 128134
 Ion Ratio Lower Upper
 130 100
 95 101.7 78.2 117.4



#38
 Methylcyclohexane
 Concen: 102.16 ug/l
 RT: 7.373 min Scan# 1031
 Delta R.T. 0.000 min
 Lab File: VX045011.D
 Acq: 21 Feb 2025 11:07

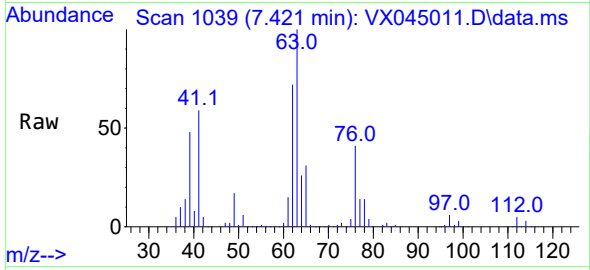
Tgt Ion: 83 Resp: 237839
 Ion Ratio Lower Upper
 83 100
 55 78.5 38.4 115.2
 98 48.2 24.4 73.4



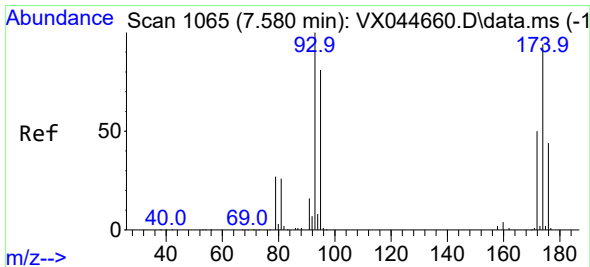
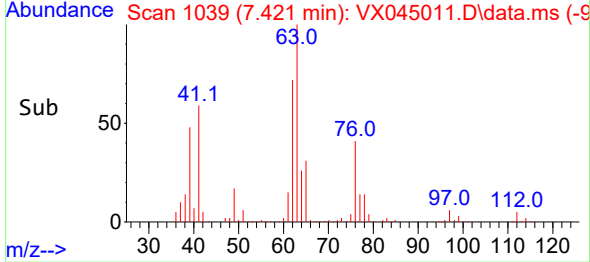
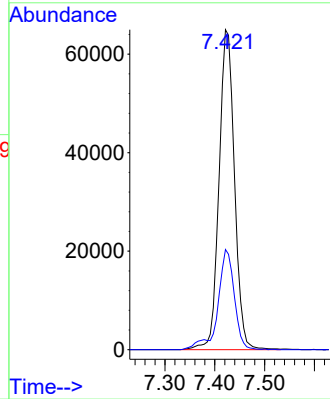


#39
 1,2-Dichloropropane
 Concen: 102.80 ug/l
 RT: 7.421 min Scan# 1039
 Delta R.T. 0.000 min
 Lab File: VX045011.D
 Acq: 21 Feb 2025 11:07

Instrument : MSVOA_N
 ClientSampleId :

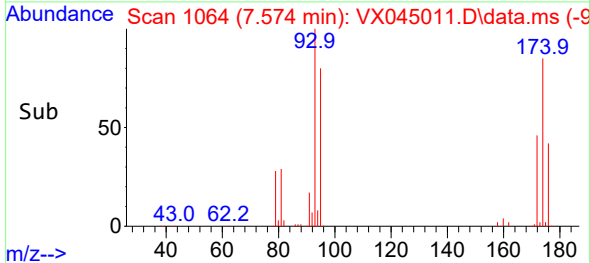
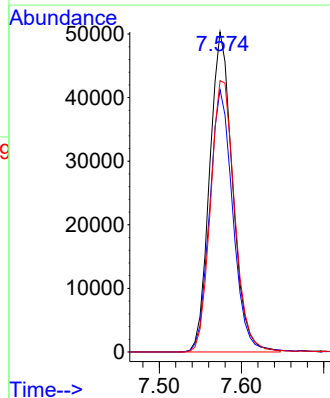
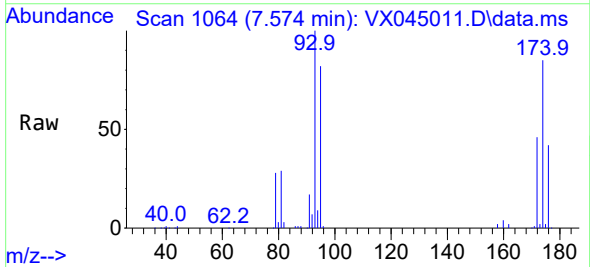


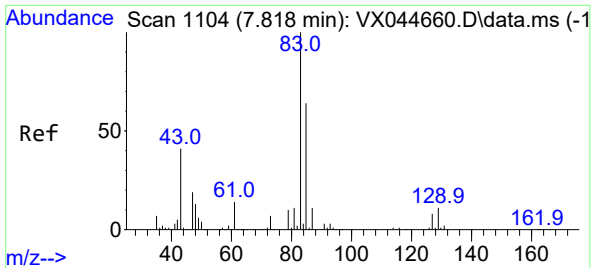
Tgt Ion: 63 Resp: 140148
 Ion Ratio Lower Upper
 63 100
 65 31.3 25.5 38.3



#40
 Dibromomethane
 Concen: 96.50 ug/l
 RT: 7.574 min Scan# 1064
 Delta R.T. -0.006 min
 Lab File: VX045011.D
 Acq: 21 Feb 2025 11:07

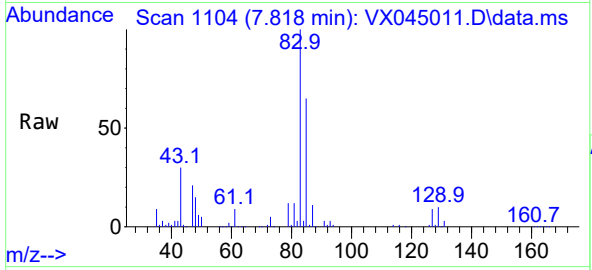
Tgt Ion: 93 Resp: 97805
 Ion Ratio Lower Upper
 93 100
 95 82.6 0.0 167.0
 174 88.6 0.0 182.0



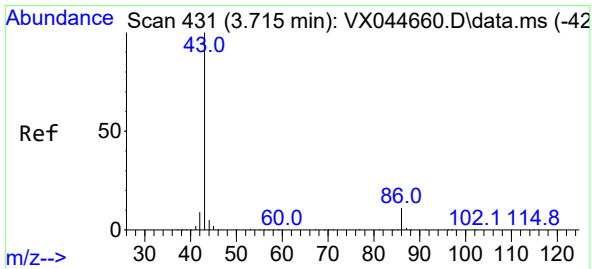
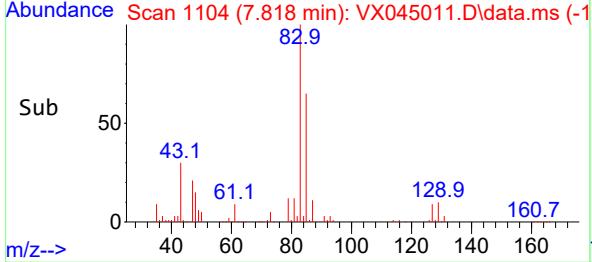
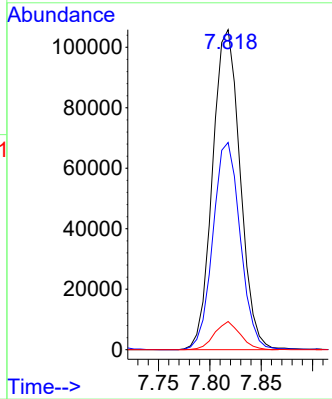


#41
 Bromodichloromethane
 Concen: 94.30 ug/l
 RT: 7.818 min Scan# 1104
 Delta R.T. 0.000 min
 Lab File: VX045011.D
 Acq: 21 Feb 2025 11:07

Instrument : MSVOA_N
 ClientSampleId :

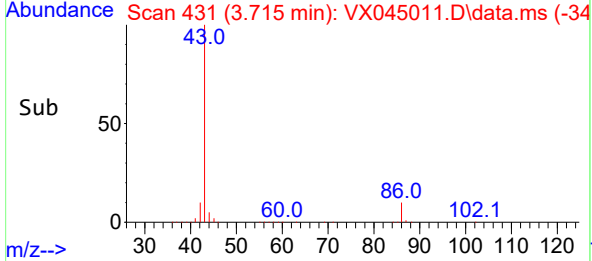
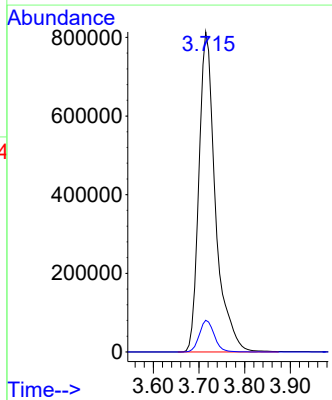
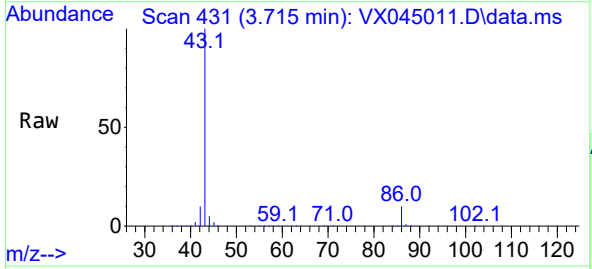


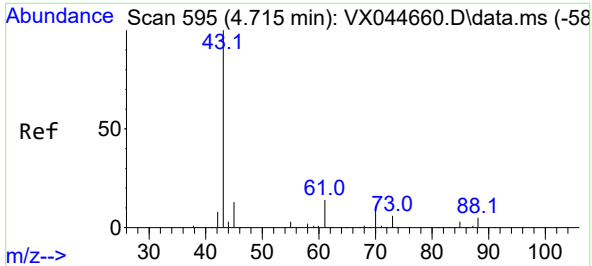
Tgt Ion: 83 Resp: 197339
 Ion Ratio Lower Upper
 83 100
 85 64.8 50.9 76.3
 127 8.8 6.5 9.7



#42
 Vinyl Acetate
 Concen: 546.39 ug/l
 RT: 3.715 min Scan# 431
 Delta R.T. 0.000 min
 Lab File: VX045011.D
 Acq: 21 Feb 2025 11:07

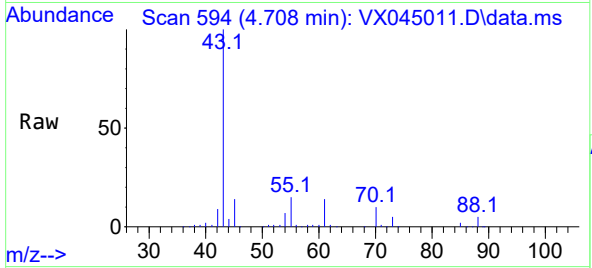
Tgt Ion: 43 Resp: 2042535
 Ion Ratio Lower Upper
 43 100
 86 8.9 8.0 12.0



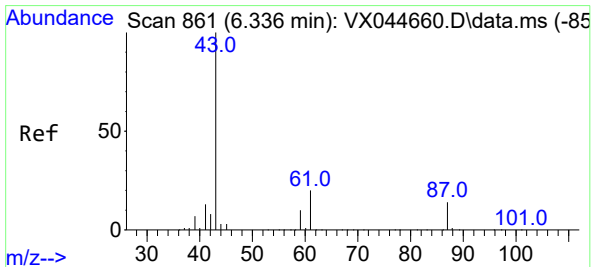
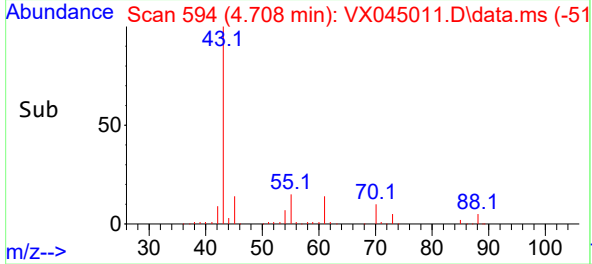
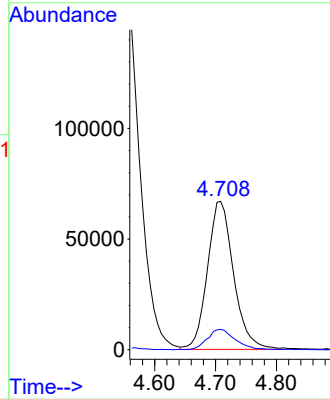


#43
 Ethyl Acetate
 Concen: 107.94 ug/l
 RT: 4.708 min Scan# 595
 Delta R.T. -0.006 min
 Lab File: VX045011.D
 Acq: 21 Feb 2025 11:07

Instrument :
 MSVOA_N
 ClientSampleId :

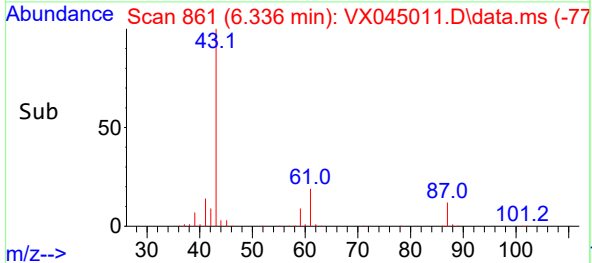
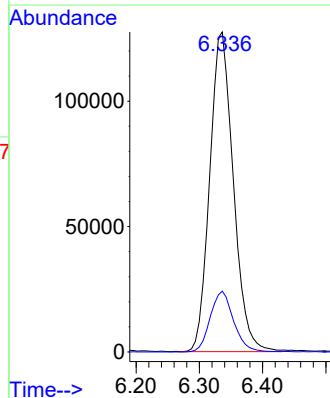
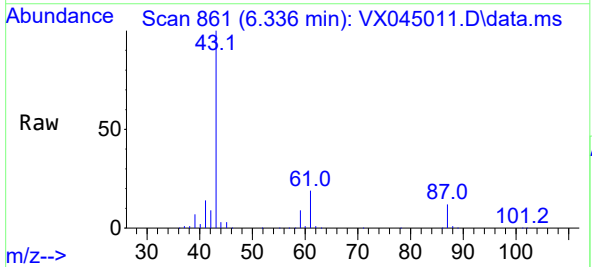


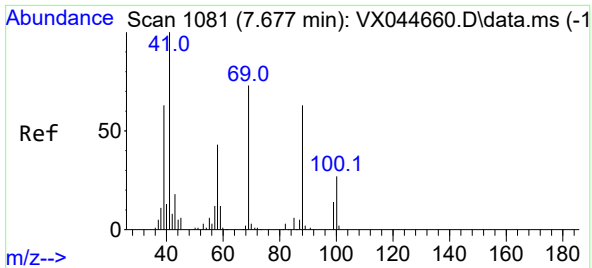
Tgt Ion: 43 Resp: 199304
 Ion Ratio Lower Upper
 43 100
 45 14.6 0.1 0.1#



#44
 Isopropyl Acetate
 Concen: 99.45 ug/l
 RT: 6.336 min Scan# 861
 Delta R.T. 0.000 min
 Lab File: VX045011.D
 Acq: 21 Feb 2025 11:07

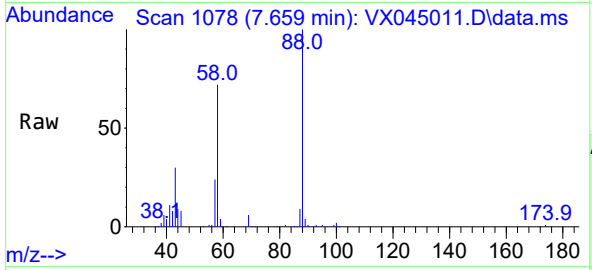
Tgt Ion: 43 Resp: 329903
 Ion Ratio Lower Upper
 43 100
 61 18.9 16.2 24.4





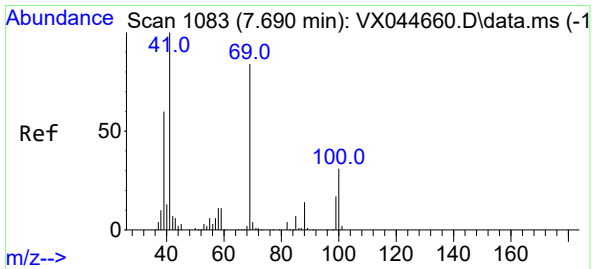
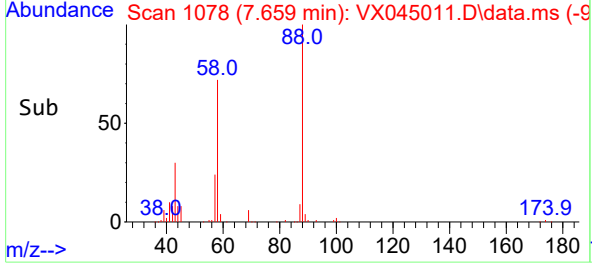
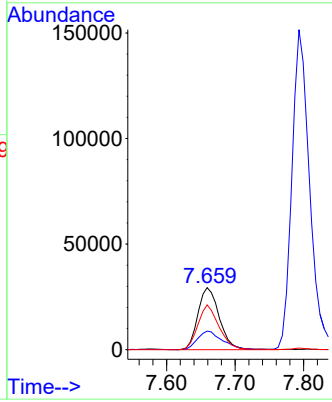
#45
 1,4-Dioxane
 Concen: 2017.51 ug/l
 RT: 7.659 min Scan# 1081
 Delta R.T. -0.018 min
 Lab File: VX045011.D
 Acq: 21 Feb 2025 11:07

Instrument : MSVOA_N
 ClientSampleId :



Tgt Ion: 88 Resp: 63728

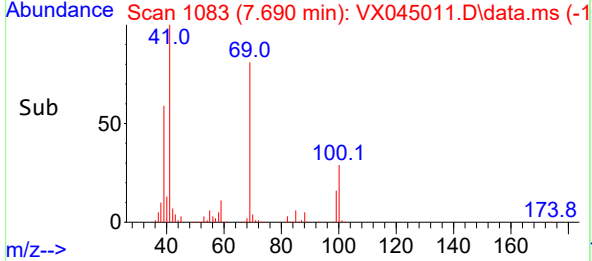
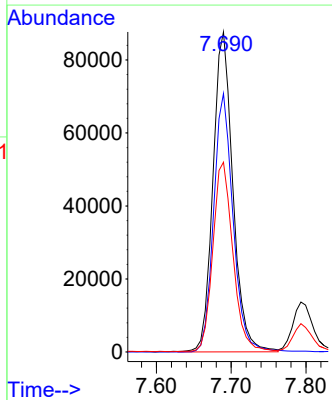
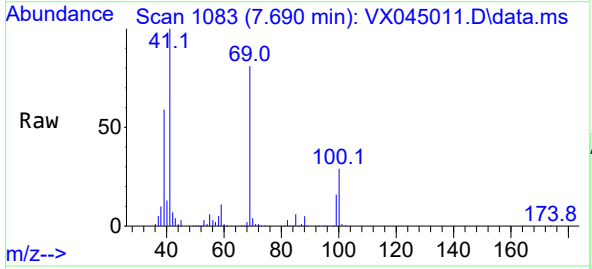
Ion	Ratio	Lower	Upper
88	100		
43	34.9	25.9	38.9
58	71.2	58.9	88.3

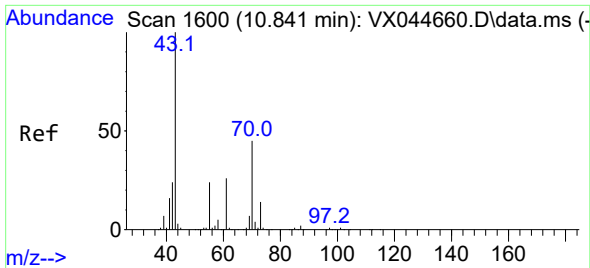


#46
 Methyl methacrylate
 Concen: 100.09 ug/l
 RT: 7.690 min Scan# 1083
 Delta R.T. 0.000 min
 Lab File: VX045011.D
 Acq: 21 Feb 2025 11:07

Tgt Ion: 41 Resp: 162523

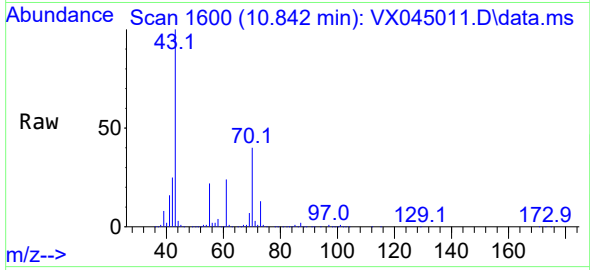
Ion	Ratio	Lower	Upper
41	100		
69	80.9	41.9	125.7
39	59.3	30.1	90.3



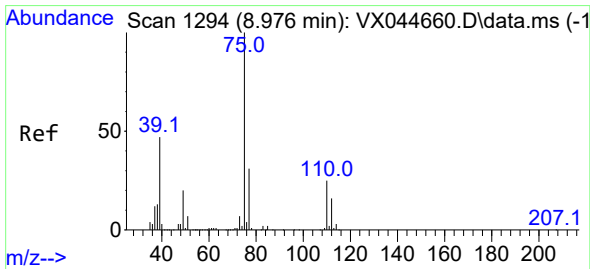
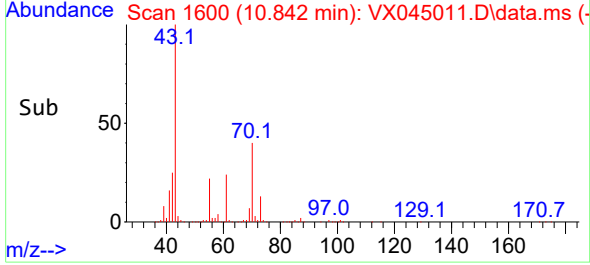
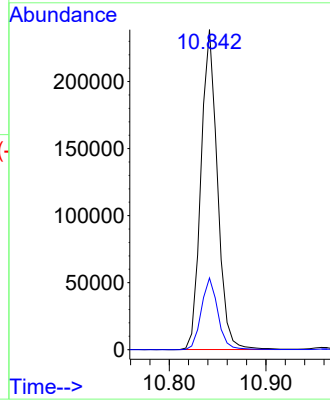


#47
 n-amy1 Acetate
 Concen: 101.63 ug/l
 RT: 10.842 min Scan# 10
 Delta R.T. 0.000 min
 Lab File: VX045011.D
 Acq: 21 Feb 2025 11:07

Instrument : MSVOA_N
 ClientSampleId :

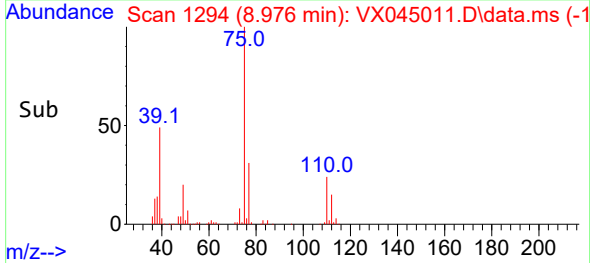
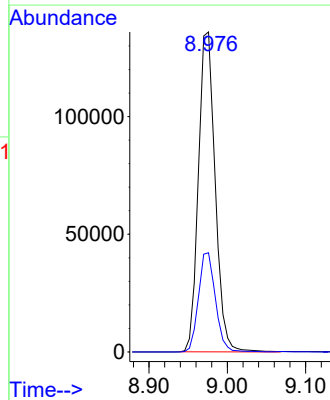
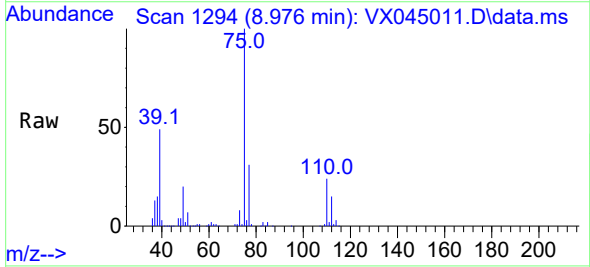


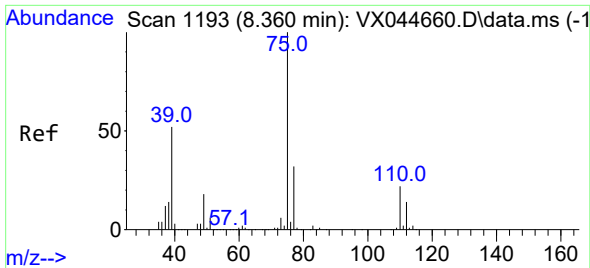
Tgt Ion: 43 Resp: 282922
 Ion Ratio Lower Upper
 43 100
 55 22.5 18.9 28.3



#48
 t-1,3-Dichloropropene
 Concen: 91.81 ug/l
 RT: 8.976 min Scan# 1294
 Delta R.T. 0.000 min
 Lab File: VX045011.D
 Acq: 21 Feb 2025 11:07

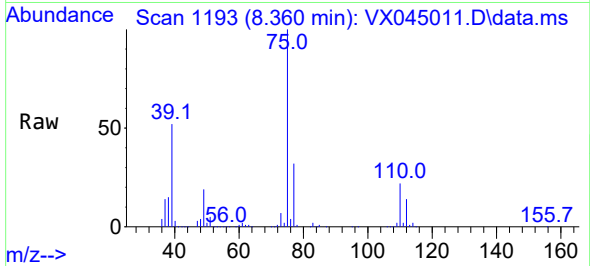
Tgt Ion: 75 Resp: 202810
 Ion Ratio Lower Upper
 75 100
 77 31.0 24.8 37.2



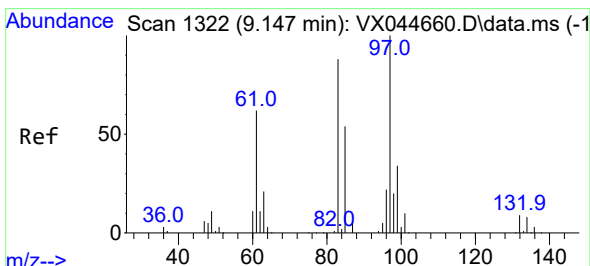
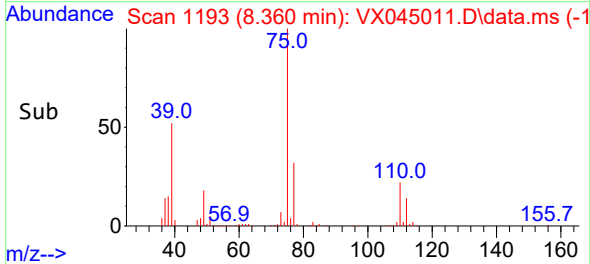
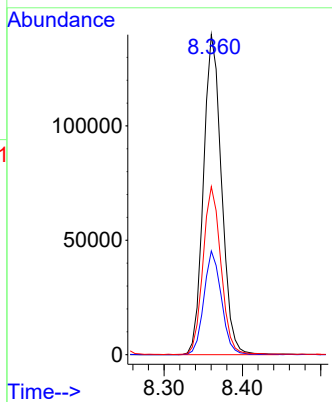


#49
 cis-1,3-Dichloropropene
 Concen: 94.50 ug/l
 RT: 8.360 min Scan# 1193
 Delta R.T. 0.000 min
 Lab File: VX045011.D
 Acq: 21 Feb 2025 11:07

Instrument :
 MSVOA_N
 ClientSampleId :

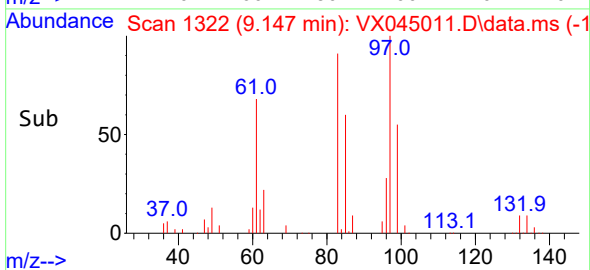
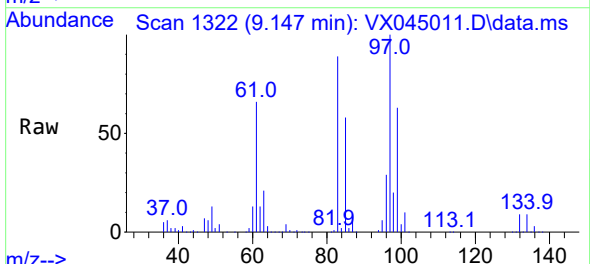
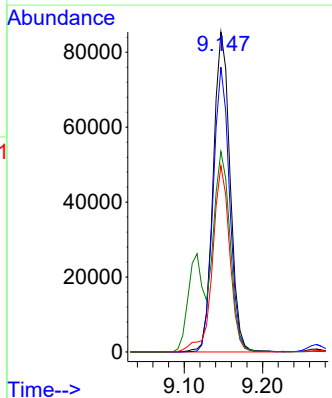


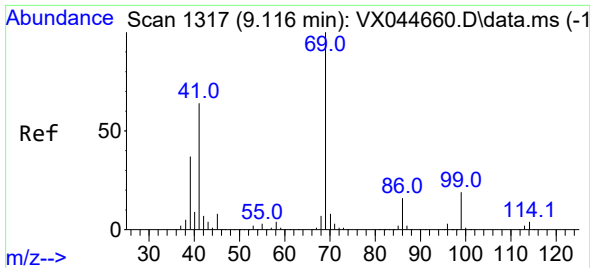
Tgt Ion: 75 Resp: 223833
 Ion Ratio Lower Upper
 75 100
 77 32.4 25.4 38.0
 39 52.4 41.4 62.0



#50
 1,1,2-Trichloroethane
 Concen: 97.82 ug/l
 RT: 9.147 min Scan# 1322
 Delta R.T. 0.000 min
 Lab File: VX045011.D
 Acq: 21 Feb 2025 11:07

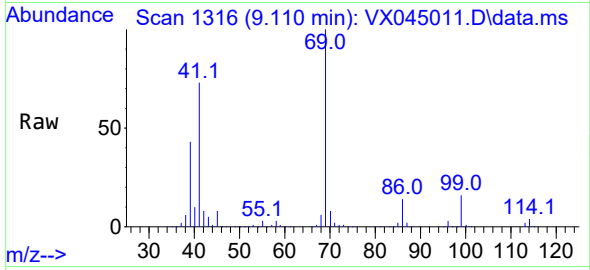
Tgt Ion: 97 Resp: 127690
 Ion Ratio Lower Upper
 97 100
 83 89.0 69.2 103.8
 85 58.1 44.8 67.2
 99 62.5 52.1 78.1



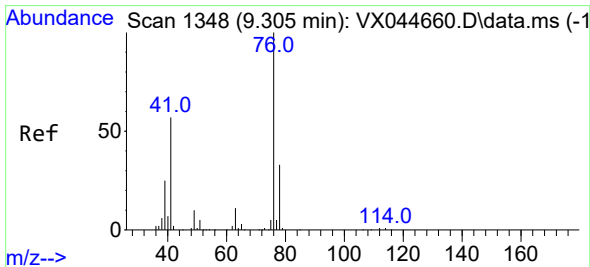
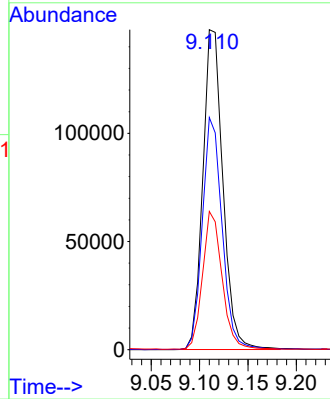
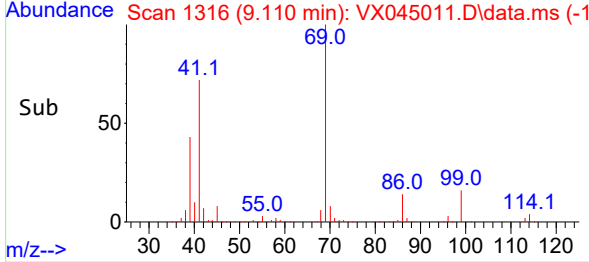


#51
 Ethyl methacrylate
 Concen: 94.58 ug/l
 RT: 9.110 min Scan# 11
 Delta R.T. -0.006 min
 Lab File: VX045011.D
 Acq: 21 Feb 2025 11:07

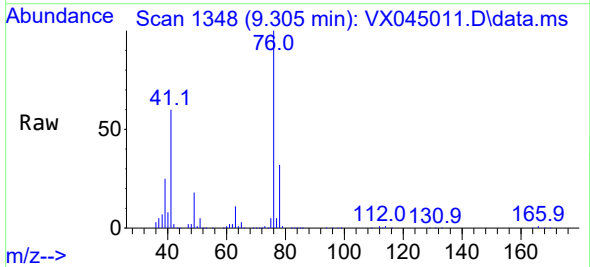
Instrument :
 MSVOA_N
 ClientSampleId :



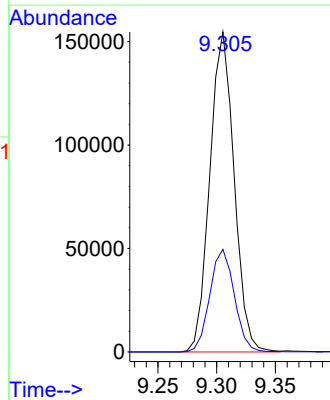
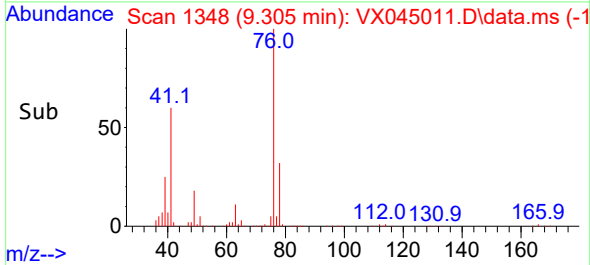
Tgt Ion: 69 Resp: 214475
 Ion Ratio Lower Upper
 69 100
 41 72.5 32.0 96.0
 39 43.1 18.6 55.6

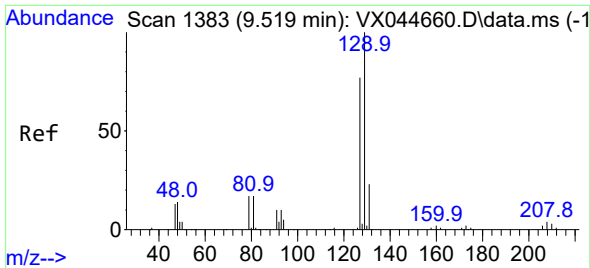


#52
 1,3-Dichloropropane
 Concen: 98.64 ug/l
 RT: 9.305 min Scan# 1348
 Delta R.T. 0.000 min
 Lab File: VX045011.D
 Acq: 21 Feb 2025 11:07



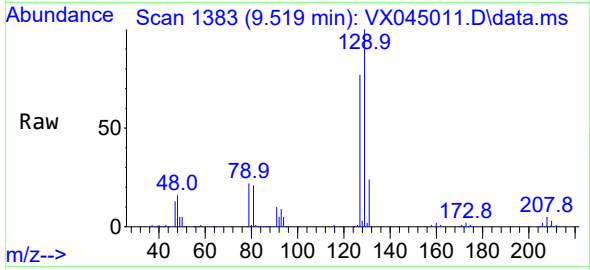
Tgt Ion: 76 Resp: 222694
 Ion Ratio Lower Upper
 76 100
 78 32.3 0.0 64.0



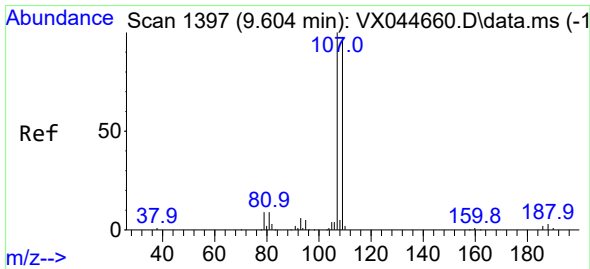
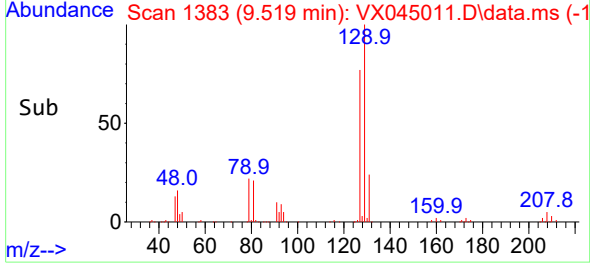
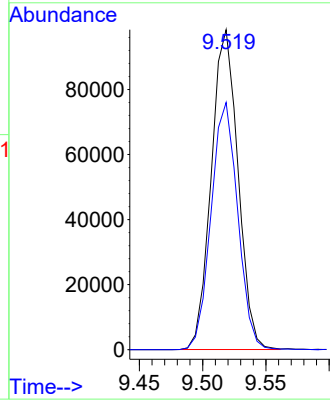


#53
 Dibromochloromethane
 Concen: 92.57 ug/l
 RT: 9.519 min Scan# 11
 Delta R.T. 0.000 min
 Lab File: VX045011.D
 Acq: 21 Feb 2025 11:07

Instrument :
 MSVOA_N
 ClientSampleId :

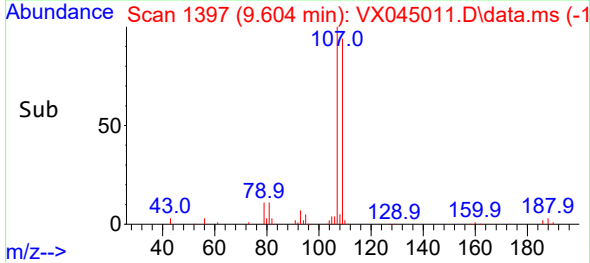
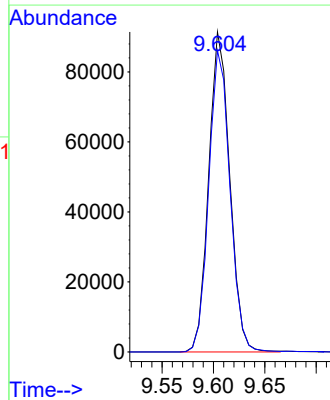
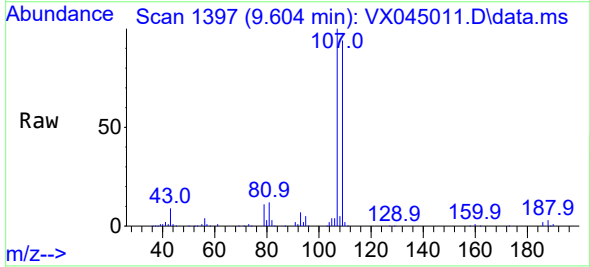


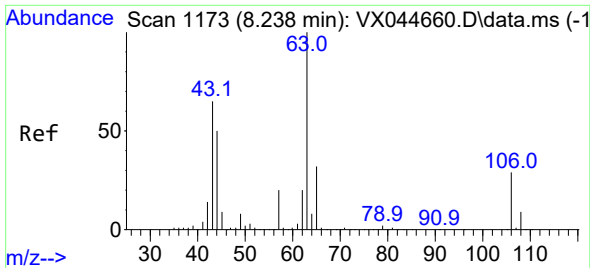
Tgt Ion:129 Resp: 144384
 Ion Ratio Lower Upper
 129 100
 127 77.2 37.8 113.4



#54
 1,2-Dibromoethane
 Concen: 94.59 ug/l
 RT: 9.604 min Scan# 1397
 Delta R.T. 0.000 min
 Lab File: VX045011.D
 Acq: 21 Feb 2025 11:07

Tgt Ion:107 Resp: 130524
 Ion Ratio Lower Upper
 107 100
 109 95.0 75.5 113.3

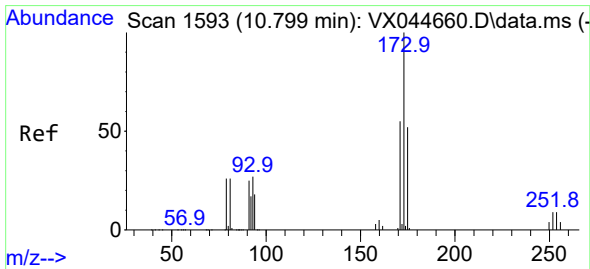
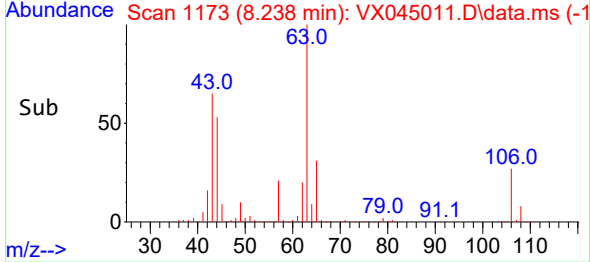
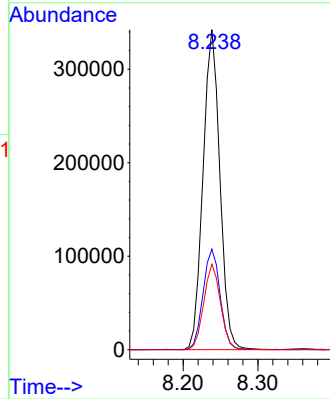
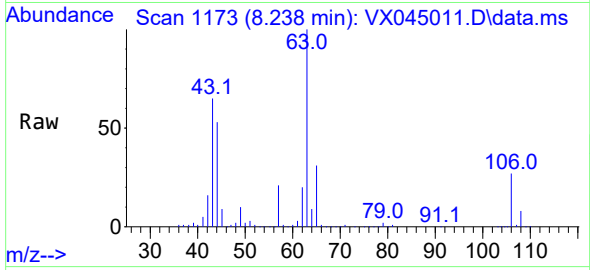




#55
 2-Chloroethyl vinyl ether
 Concen: 486.68 ug/l
 RT: 8.238 min Scan# 1173
 Delta R.T. 0.000 min
 Lab File: VX045011.D
 Acq: 21 Feb 2025 11:07

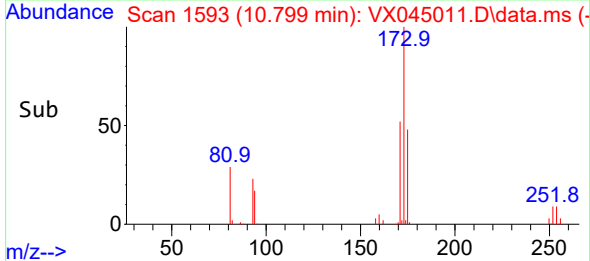
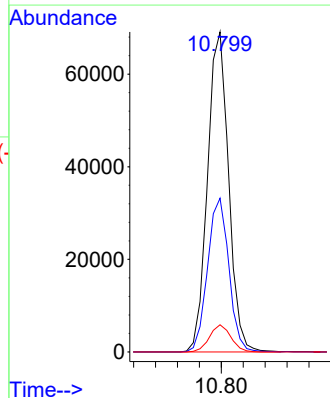
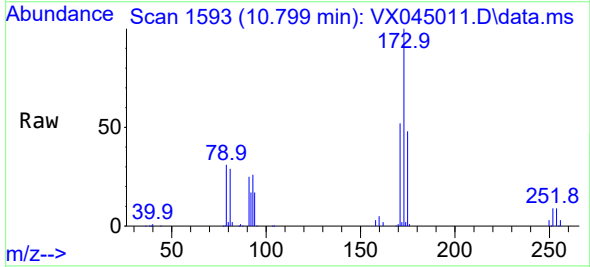
Instrument :
 MSVOA_N
 ClientSampleId :

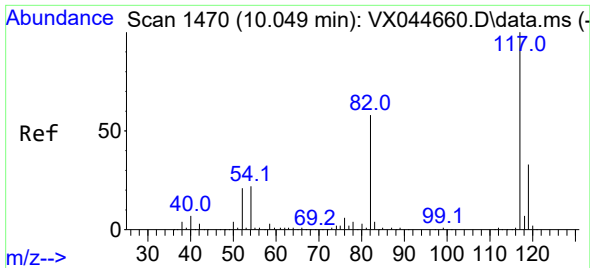
Tgt Ion: 63 Resp: 535473
 Ion Ratio Lower Upper
 63 100
 65 31.9 25.8 38.6
 106 26.6 23.1 34.7



#56
 Bromoform
 Concen: 89.35 ug/l
 RT: 10.799 min Scan# 1593
 Delta R.T. 0.000 min
 Lab File: VX045011.D
 Acq: 21 Feb 2025 11:07

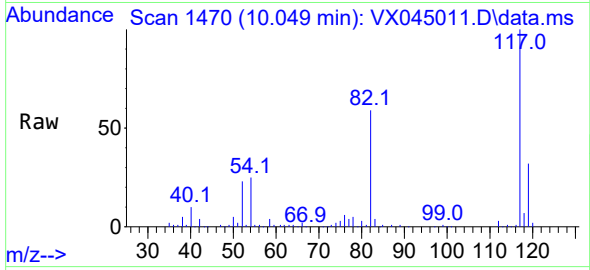
Tgt Ion: 173 Resp: 92416
 Ion Ratio Lower Upper
 173 100
 175 48.5 39.0 58.6
 254 8.6 6.5 9.7



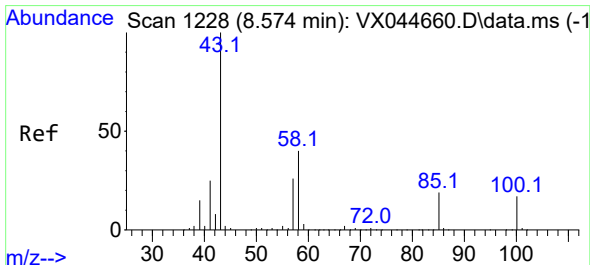
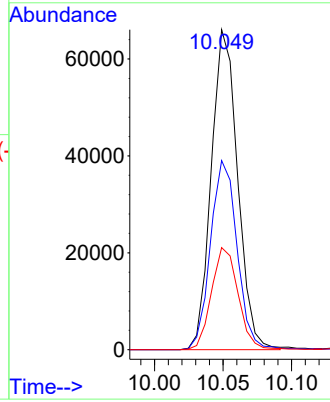
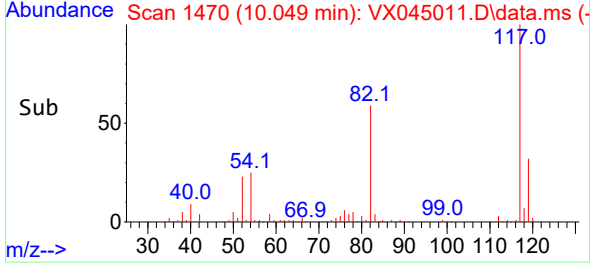


#57
 Chlorobenzene-d5
 Concen: 30.00 ug/l
 RT: 10.049 min Scan# 1470
 Delta R.T. 0.000 min
 Lab File: VX045011.D
 Acq: 21 Feb 2025 11:07

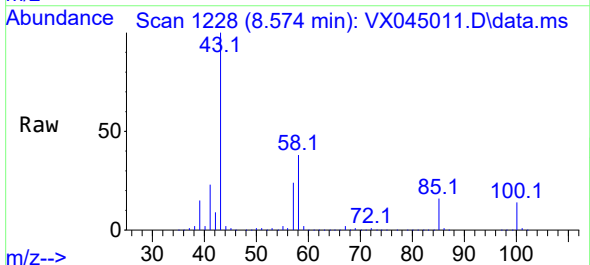
Instrument :
 MSVOA_N
 ClientSampleId :



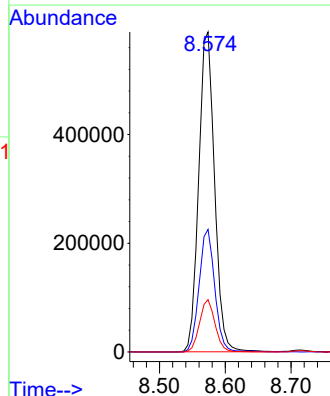
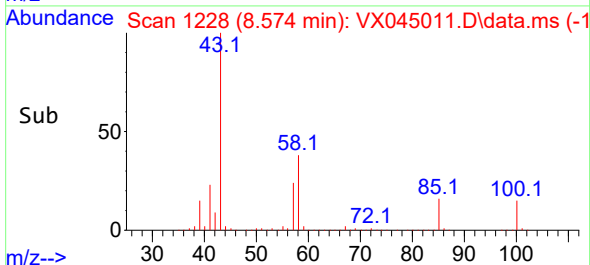
Tgt Ion:117 Resp: 88321
 Ion Ratio Lower Upper
 117 100
 82 60.0 45.8 68.6
 119 32.4 25.8 38.6

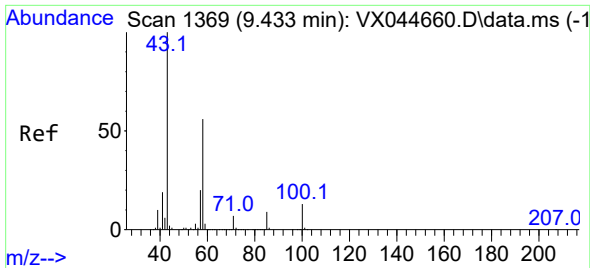


#58
 4-Methyl-2-Pentanone
 Concen: 528.40 ug/l
 RT: 8.574 min Scan# 1228
 Delta R.T. 0.000 min
 Lab File: VX045011.D
 Acq: 21 Feb 2025 11:07



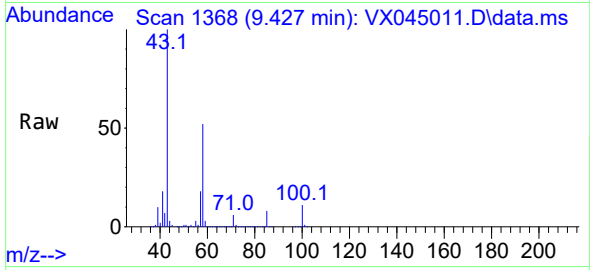
Tgt Ion: 43 Resp: 983713
 Ion Ratio Lower Upper
 43 100
 58 37.6 31.7 47.5
 85 16.1 15.0 22.6



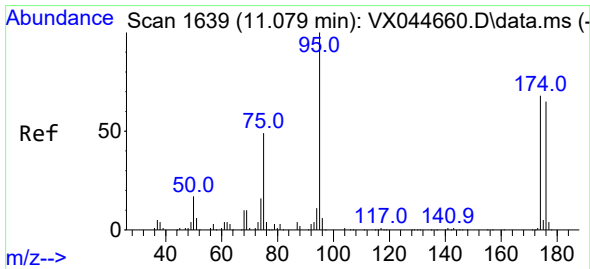
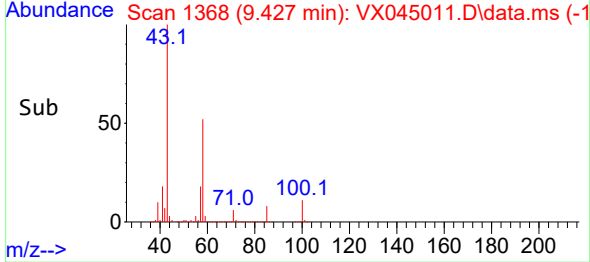
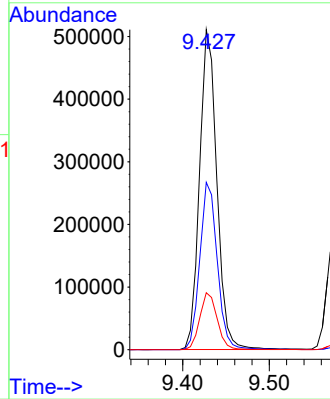


#59
 2-Hexanone
 Concen: 520.09 ug/l
 RT: 9.427 min Scan# 11
 Delta R.T. -0.006 min
 Lab File: VX045011.D
 Acq: 21 Feb 2025 11:07

Instrument :
 MSVOA_N
 ClientSampleId :

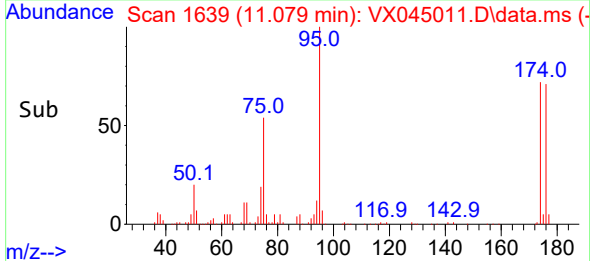
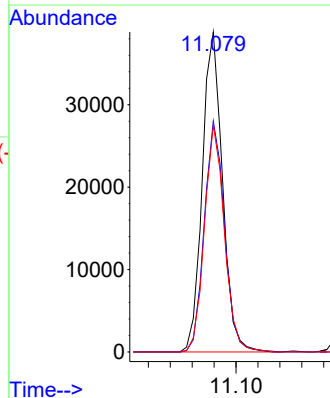
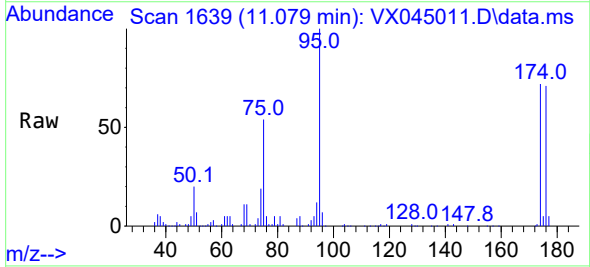


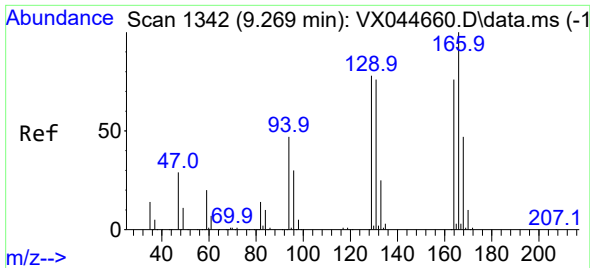
Tgt Ion: 43 Resp: 708849
 Ion Ratio Lower Upper
 43 100
 58 53.0 44.4 66.6
 57 18.1 15.5 23.3



#60
 4-Bromofluorobenzene
 Concen: 28.96 ug/l
 RT: 11.079 min Scan# 1639
 Delta R.T. 0.000 min
 Lab File: VX045011.D
 Acq: 21 Feb 2025 11:07

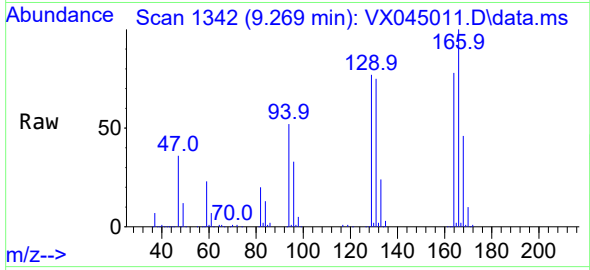
Tgt Ion: 95 Resp: 49683
 Ion Ratio Lower Upper
 95 100
 174 72.2 54.6 81.8
 176 70.1 52.8 79.2



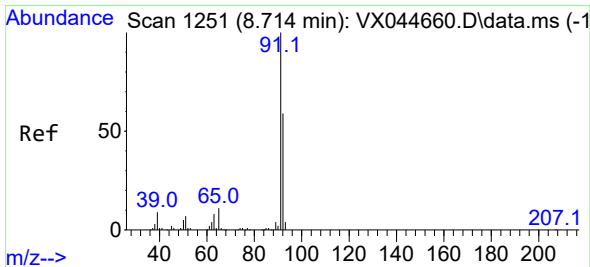
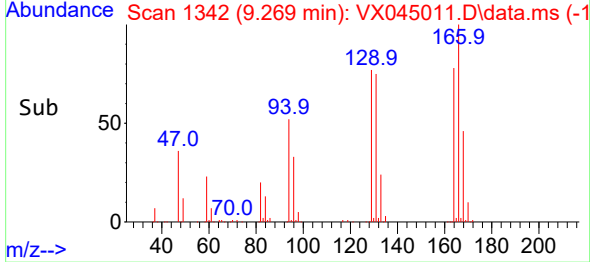
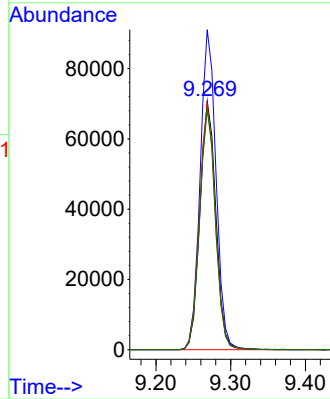


#61
 Tetrachloroethene
 Concen: 98.97 ug/l
 RT: 9.269 min Scan# 11
 Delta R.T. 0.000 min
 Lab File: VX045011.D
 Acq: 21 Feb 2025 11:07

Instrument :
 MSVOA_N
 ClientSampleId :

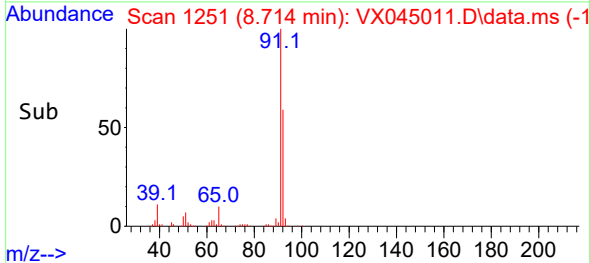
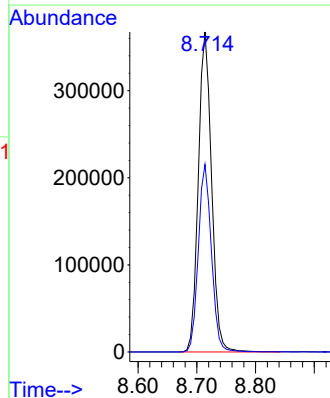
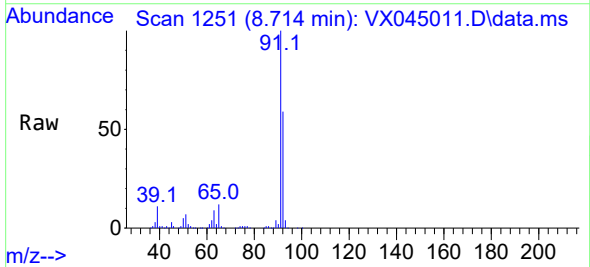


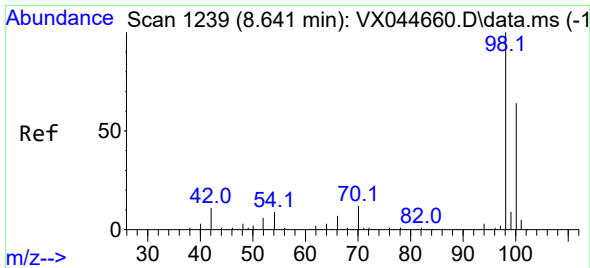
Tgt Ion:164 Resp: 104854
 Ion Ratio Lower Upper
 164 100
 166 128.7 105.6 158.4
 129 98.8 82.8 124.2
 131 96.4 80.2 120.4



#62
 Toluene
 Concen: 99.00 ug/l
 RT: 8.714 min Scan# 1251
 Delta R.T. 0.000 min
 Lab File: VX045011.D
 Acq: 21 Feb 2025 11:07

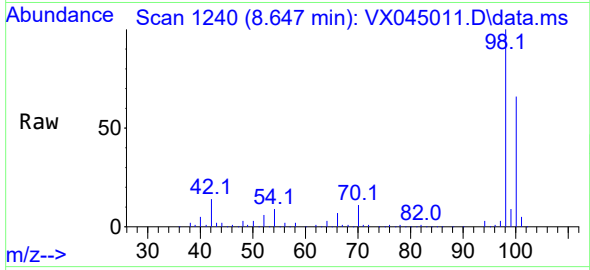
Tgt Ion: 91 Resp: 575772
 Ion Ratio Lower Upper
 91 100
 92 57.9 47.3 70.9



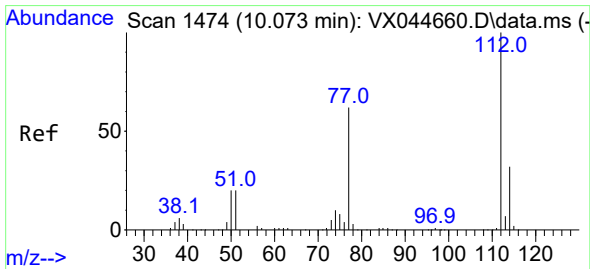
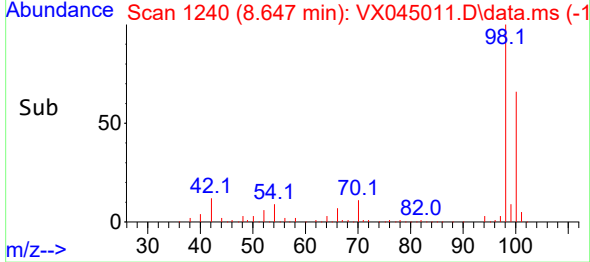
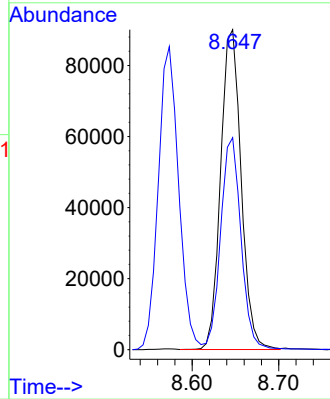


#63
 Toluene-d8
 Concen: 30.83 ug/l
 RT: 8.647 min Scan# 11
 Delta R.T. 0.006 min
 Lab File: VX045011.D
 Acq: 21 Feb 2025 11:07

Instrument :
 MSVOA_N
 ClientSampleId :

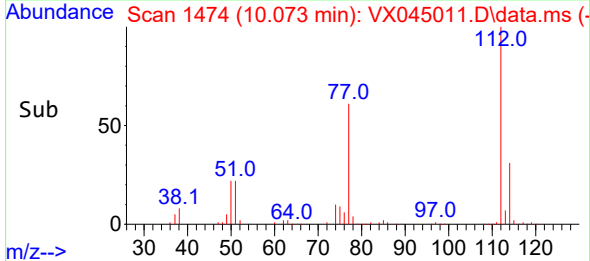
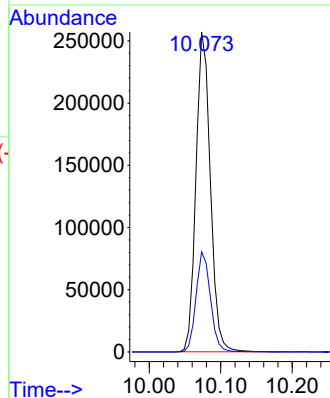
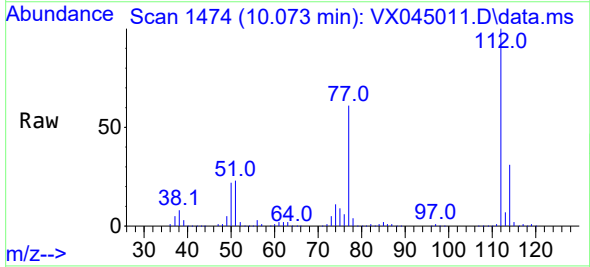


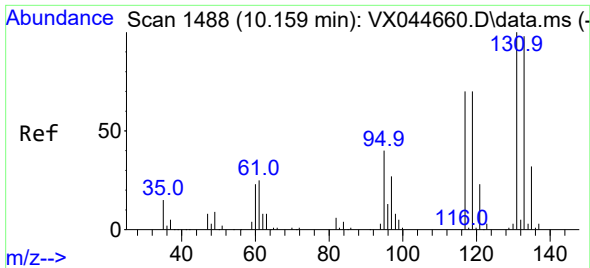
Tgt Ion: 98 Resp: 148078
 Ion Ratio Lower Upper
 98 100
 100 65.9 53.6 80.4



#64
 Chlorobenzene
 Concen: 99.43 ug/l
 RT: 10.073 min Scan# 1474
 Delta R.T. 0.000 min
 Lab File: VX045011.D
 Acq: 21 Feb 2025 11:07

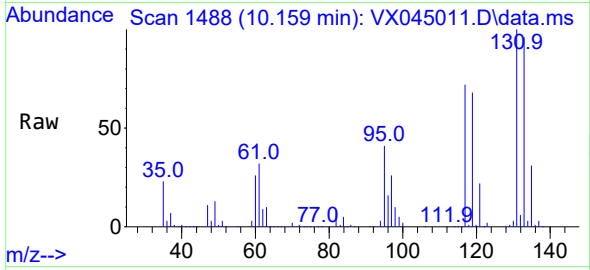
Tgt Ion: 112 Resp: 359123
 Ion Ratio Lower Upper
 112 100
 114 31.3 25.5 38.3



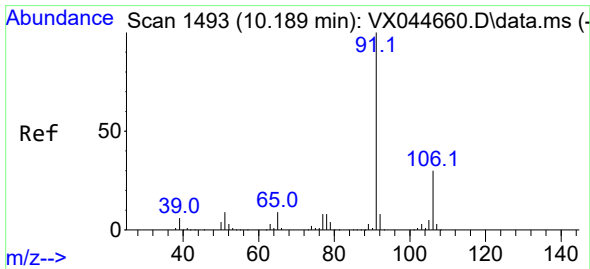
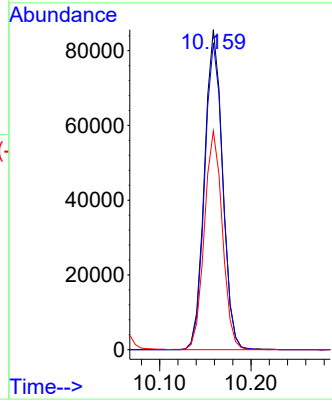
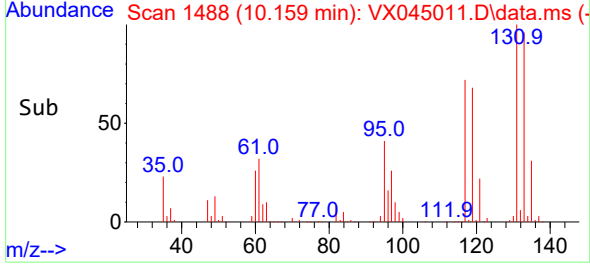


#65
 1,1,1,2-Tetrachloroethane
 Concen: 90.64 ug/l
 RT: 10.159 min Scan# 1488
 Delta R.T. 0.000 min
 Lab File: VX045011.D
 Acq: 21 Feb 2025 11:07

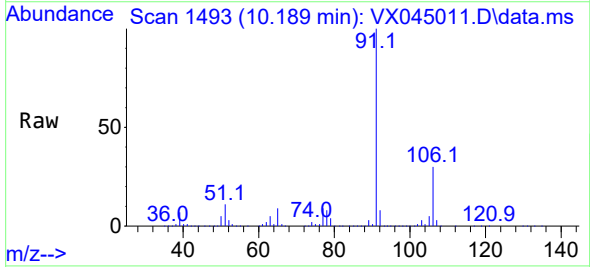
Instrument :
 MSVOA_N
 ClientSampleId :



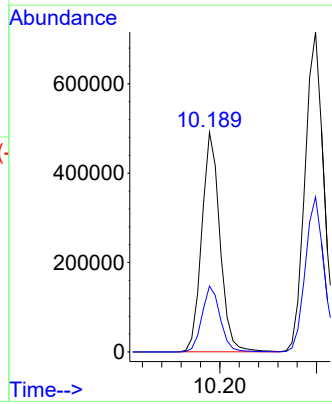
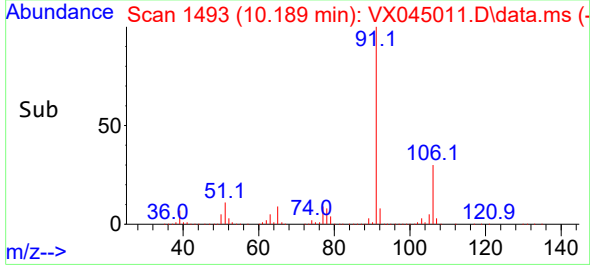
Tgt Ion:131 Resp: 117602
 Ion Ratio Lower Upper
 131 100
 133 96.2 0.0 192.4
 119 67.9 0.0 133.4

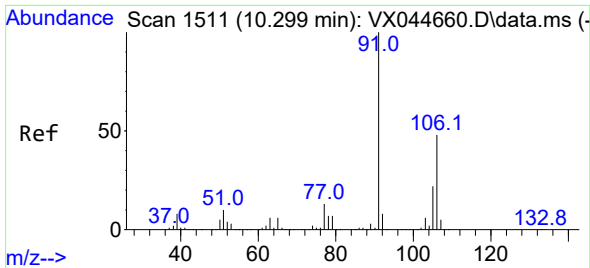


#66
 Ethyl Benzene
 Concen: 101.05 ug/l
 RT: 10.189 min Scan# 1493
 Delta R.T. 0.000 min
 Lab File: VX045011.D
 Acq: 21 Feb 2025 11:07



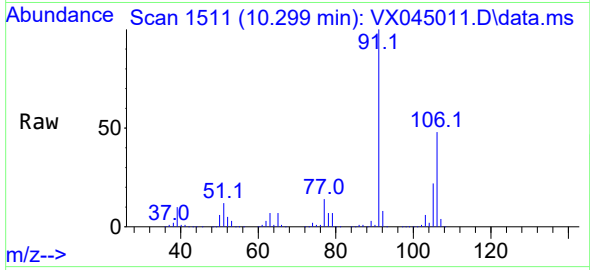
Tgt Ion: 91 Resp: 641324
 Ion Ratio Lower Upper
 91 100
 106 30.0 24.0 36.0



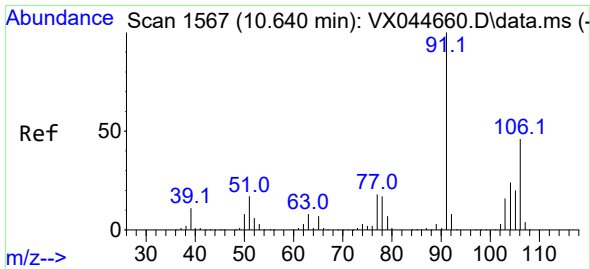
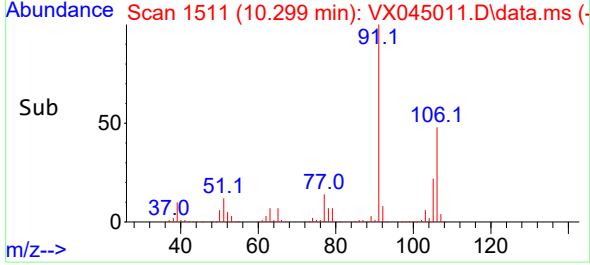
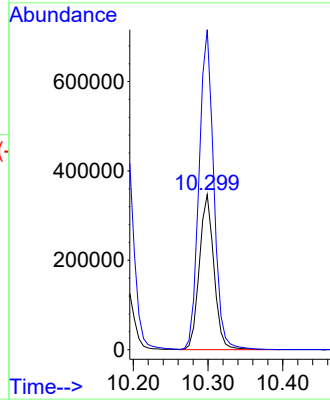


#67
 m/p-Xylenes
 Concen: 201.60 ug/l
 RT: 10.299 min Scan# 1511
 Delta R.T. 0.000 min
 Lab File: VX045011.D
 Acq: 21 Feb 2025 11:07

Instrument :
 MSVOA_N
 ClientSampleId :

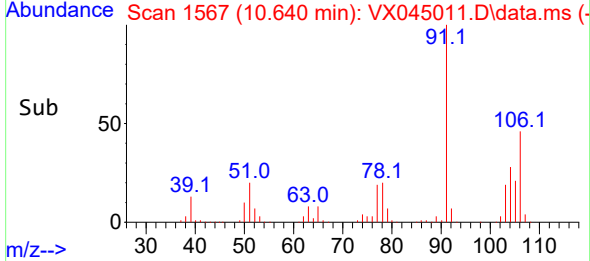
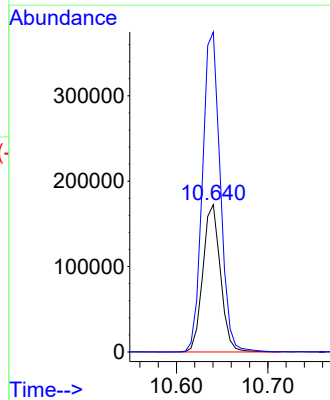
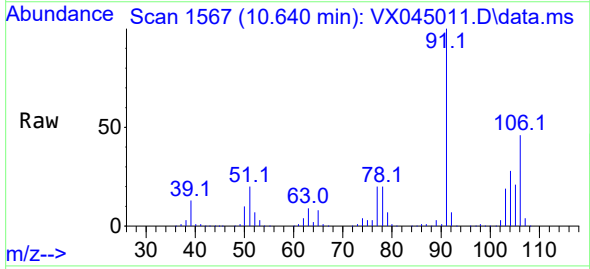


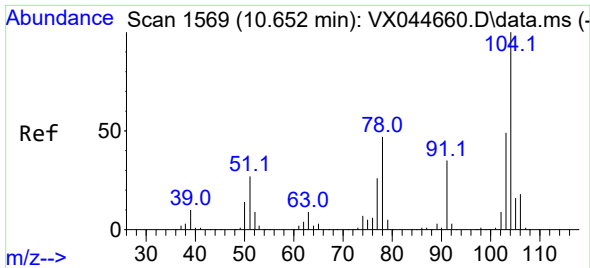
Tgt Ion:106 Resp: 470322
 Ion Ratio Lower Upper
 106 100
 91 207.5 166.8 250.2



#68
 o-Xylene
 Concen: 98.40 ug/l
 RT: 10.640 min Scan# 1567
 Delta R.T. 0.000 min
 Lab File: VX045011.D
 Acq: 21 Feb 2025 11:07

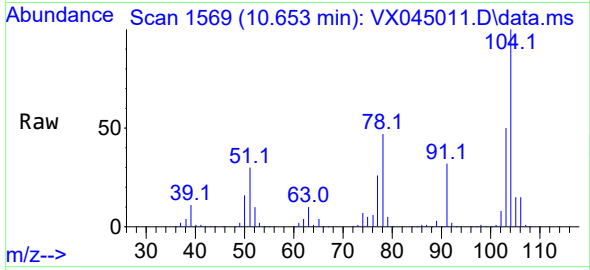
Tgt Ion:106 Resp: 230392
 Ion Ratio Lower Upper
 106 100
 91 219.4 109.7 329.1



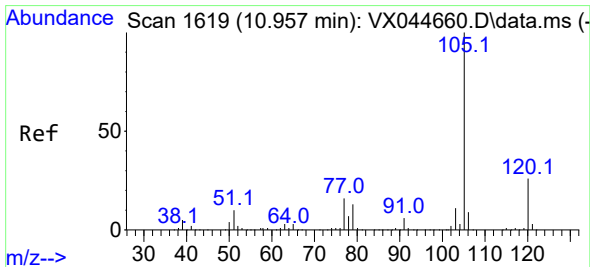
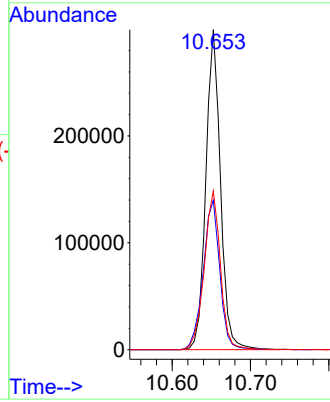
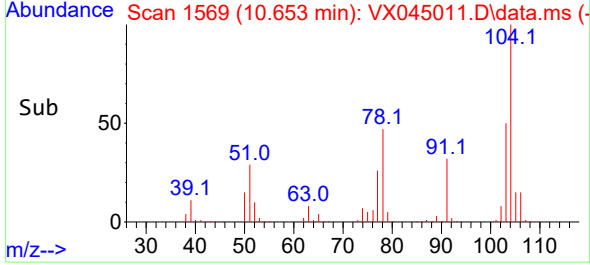


#69
 Styrene
 Concen: 100.78 ug/l
 RT: 10.653 min Scan# 11
 Delta R.T. 0.000 min
 Lab File: VX045011.D
 Acq: 21 Feb 2025 11:07

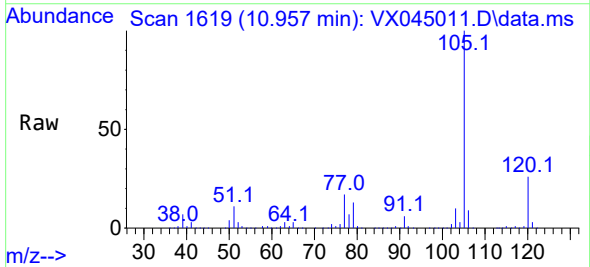
Instrument :
 MSVOA_N
 ClientSampleId :



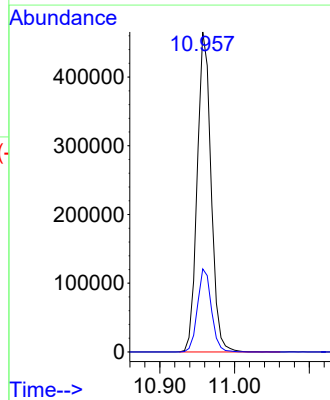
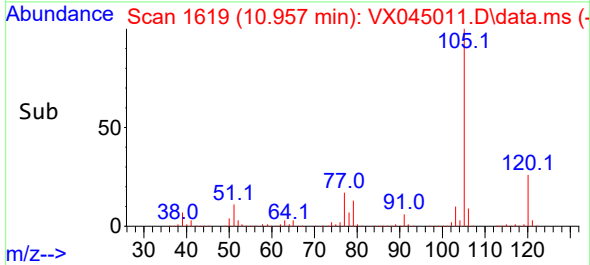
Tgt Ion:104 Resp: 387436
 Ion Ratio Lower Upper
 104 100
 78 53.3 42.0 63.0
 103 55.1 43.1 64.7

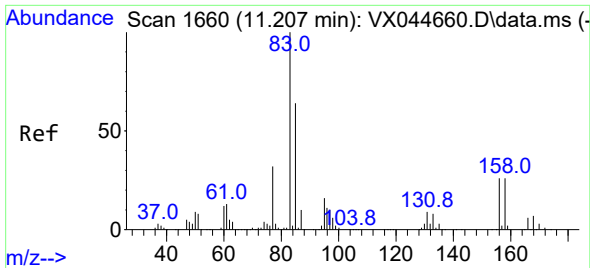


#70
 Isopropylbenzene
 Concen: 101.32 ug/l
 RT: 10.957 min Scan# 1619
 Delta R.T. 0.000 min
 Lab File: VX045011.D
 Acq: 21 Feb 2025 11:07



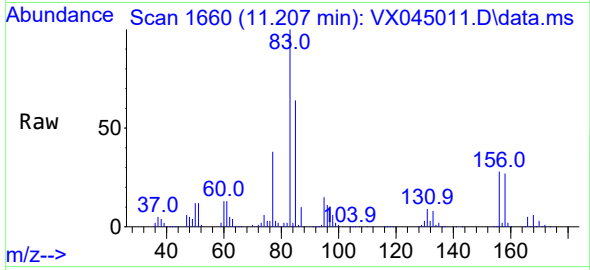
Tgt Ion:105 Resp: 596402
 Ion Ratio Lower Upper
 105 100
 120 26.1 18.6 34.6



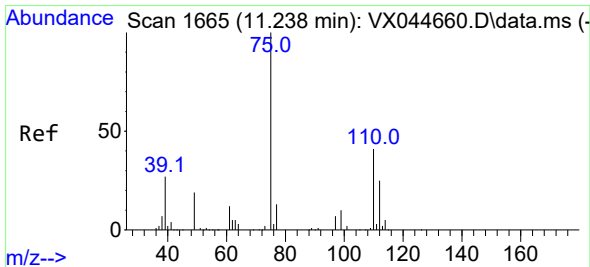
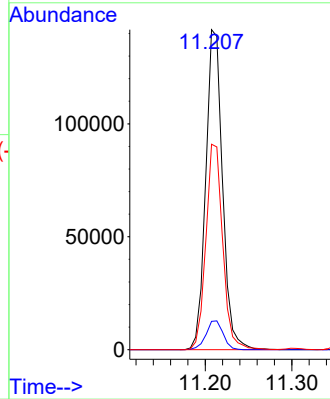
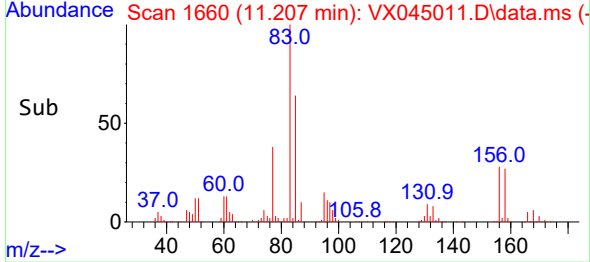


#71
 1,1,2-Tetrachloroethane
 Concen: 96.32 ug/l
 RT: 11.207 min Scan# 1660
 Delta R.T. 0.000 min
 Lab File: VX045011.D
 Acq: 21 Feb 2025 11:07

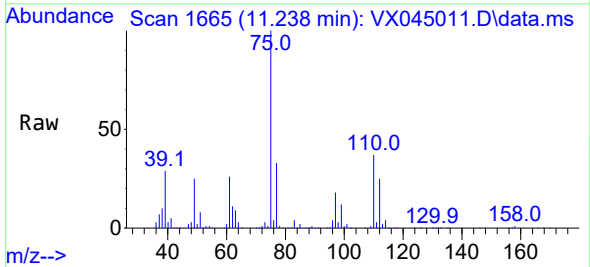
Instrument :
 MSVOA_N
 ClientSampleId :



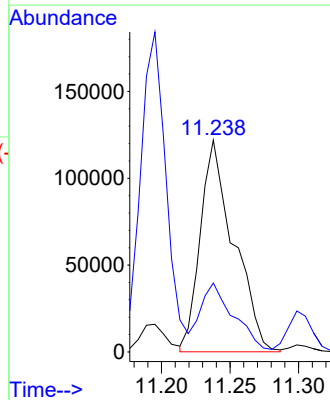
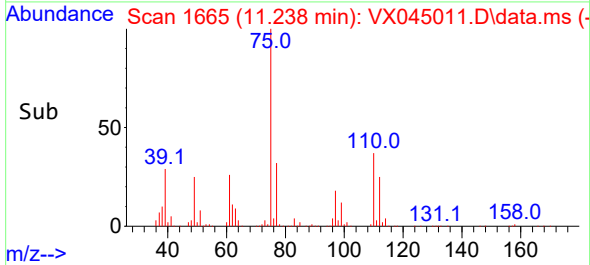
Tgt Ion: 83 Resp: 190591
 Ion Ratio Lower Upper
 83 100
 131 9.2 5.0 14.9
 85 64.5 33.0 99.0

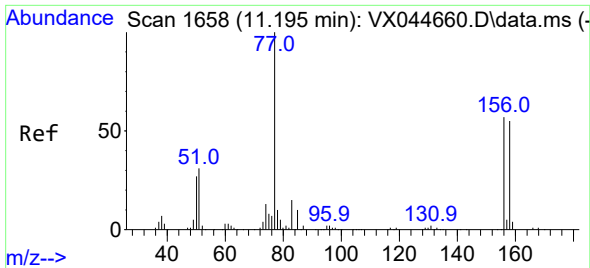


#72
 1,2,3-Trichloropropane
 Concen: 124.55 ug/l
 RT: 11.238 min Scan# 1665
 Delta R.T. 0.000 min
 Lab File: VX045011.D
 Acq: 21 Feb 2025 11:07



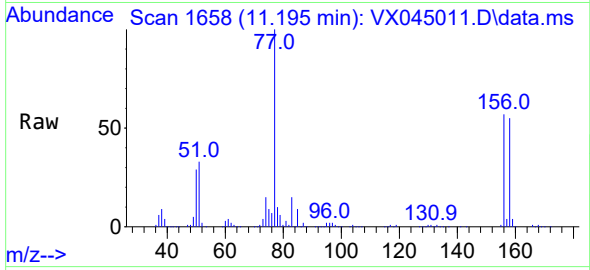
Tgt Ion: 75 Resp: 207345
 Ion Ratio Lower Upper
 75 100
 77 32.6 0.0 83.0



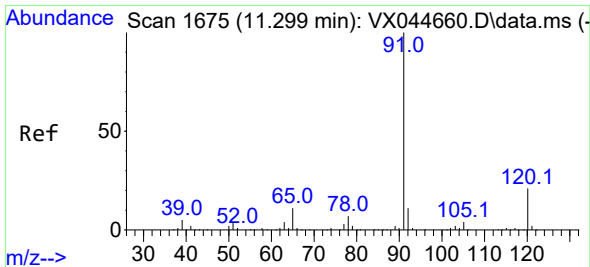
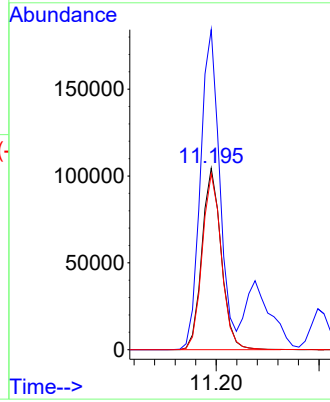
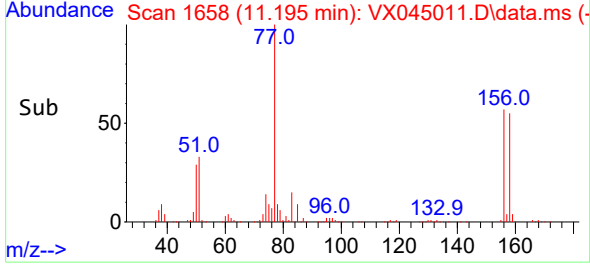


#73
 Bromobenzene
 Concen: 99.38 ug/l
 RT: 11.195 min Scan# 1658
 Delta R.T. 0.000 min
 Lab File: VX045011.D
 Acq: 21 Feb 2025 11:07

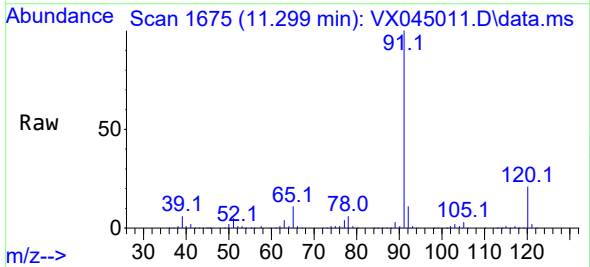
Instrument :
 MSVOA_N
 ClientSampleId :



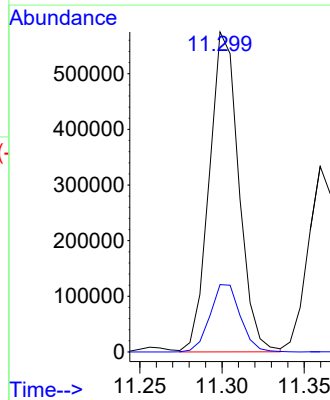
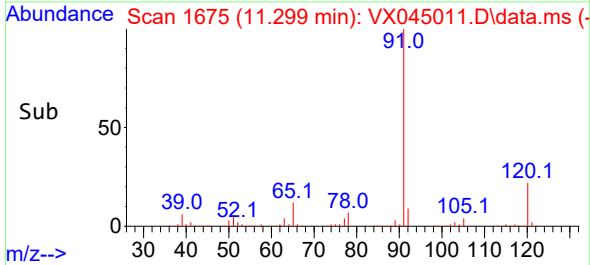
Tgt Ion:156 Resp: 136270
 Ion Ratio Lower Upper
 156 100
 77 176.6 0.0 354.6
 158 96.3 0.0 193.6

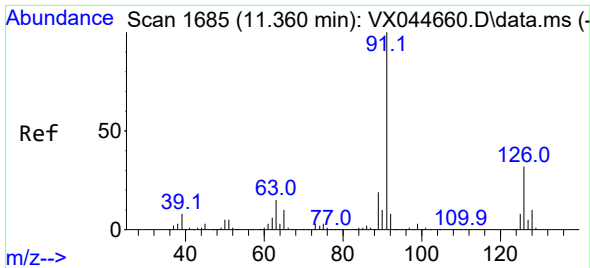


#74
 n-propylbenzene
 Concen: 107.30 ug/l
 RT: 11.299 min Scan# 1675
 Delta R.T. 0.000 min
 Lab File: VX045011.D
 Acq: 21 Feb 2025 11:07



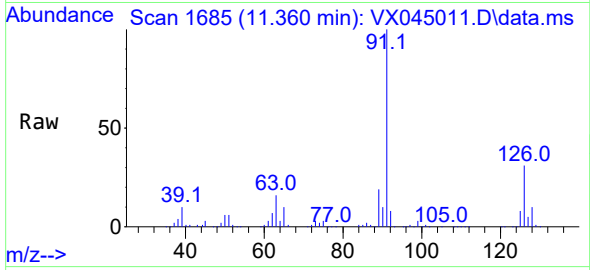
Tgt Ion: 91 Resp: 717361
 Ion Ratio Lower Upper
 91 100
 120 21.7 0.0 45.0



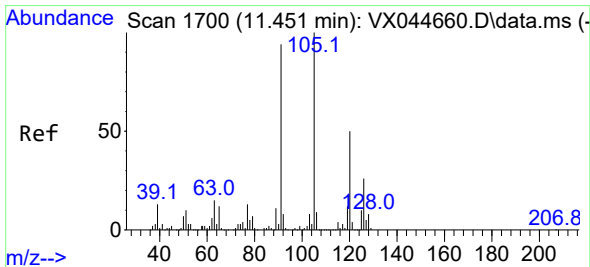
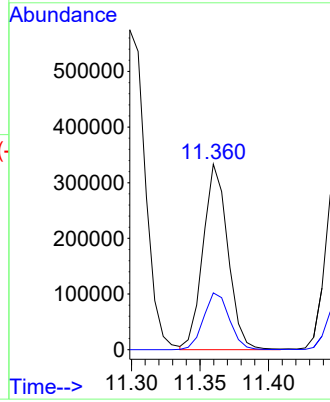
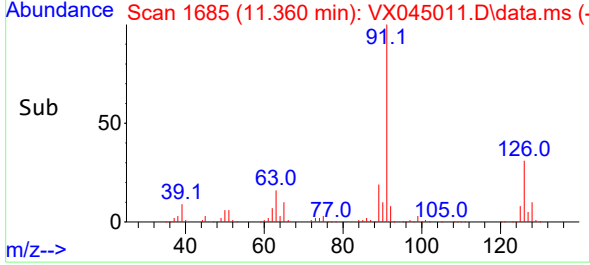


#75
 2-Chlorotoluene
 Concen: 100.26 ug/l
 RT: 11.360 min Scan# 11
 Delta R.T. 0.000 min
 Lab File: VX045011.D
 Acq: 21 Feb 2025 11:07

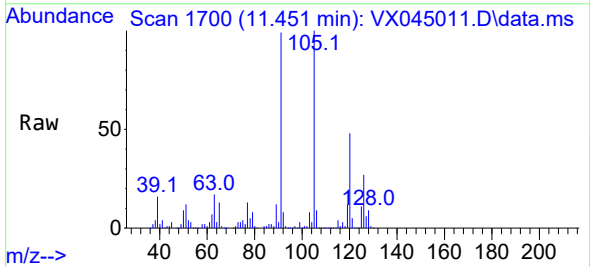
Instrument :
 MSVOA_N
 ClientSampleId :



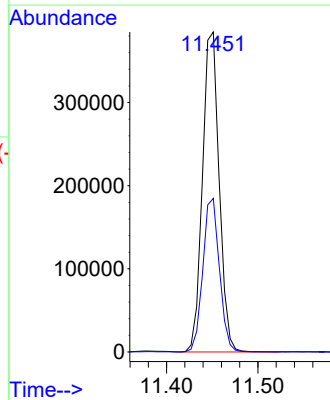
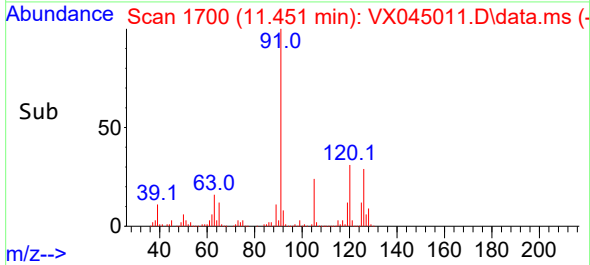
Tgt Ion: 91 Resp: 421424
 Ion Ratio Lower Upper
 91 100
 126 31.7 0.0 64.0

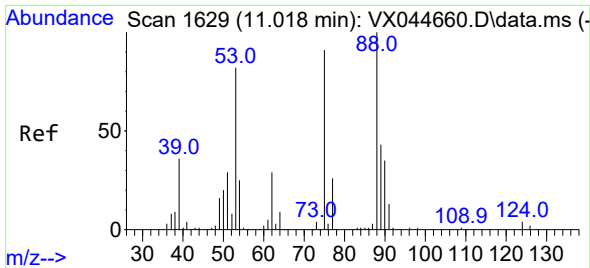


#76
 1,3,5-Trimethylbenzene
 Concen: 101.89 ug/l
 RT: 11.451 min Scan# 1700
 Delta R.T. 0.000 min
 Lab File: VX045011.D
 Acq: 21 Feb 2025 11:07



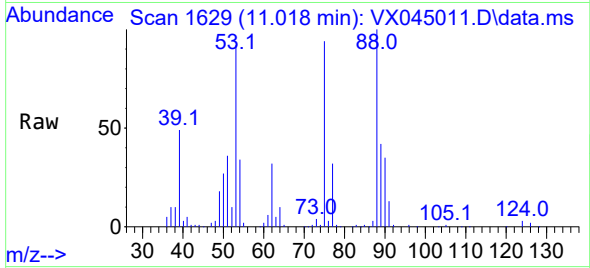
Tgt Ion: 105 Resp: 487050
 Ion Ratio Lower Upper
 105 100
 120 47.8 0.0 96.8



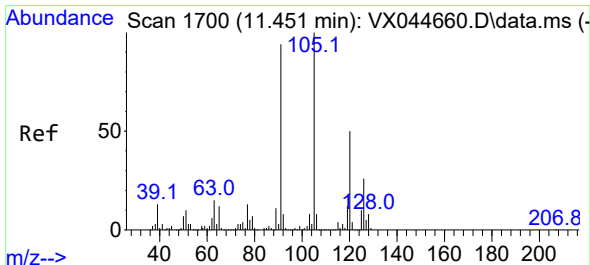
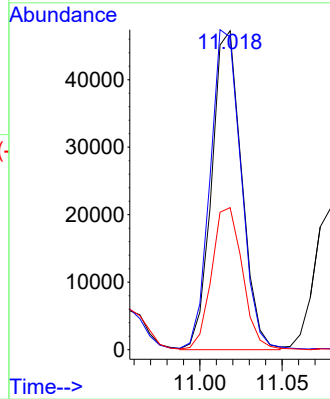
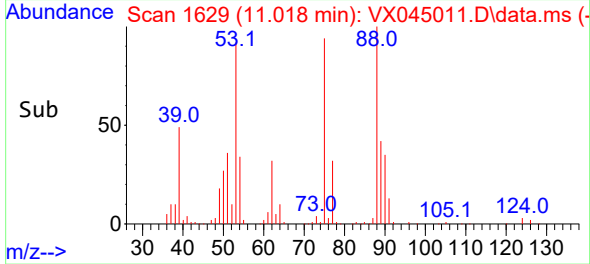


#77
 t-1,4-Dichloro-2-butene
 Concen: 76.02 ug/l
 RT: 11.018 min Scan# 1
 Delta R.T. 0.000 min
 Lab File: VX045011.D
 Acq: 21 Feb 2025 11:07

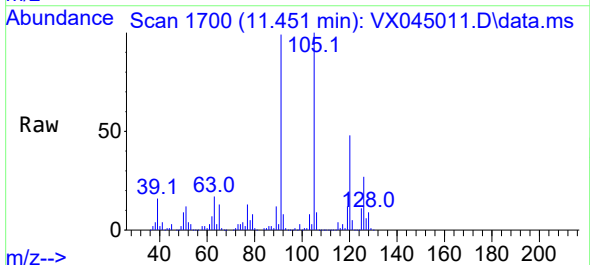
Instrument :
 MSVOA_N
 ClientSampleId :



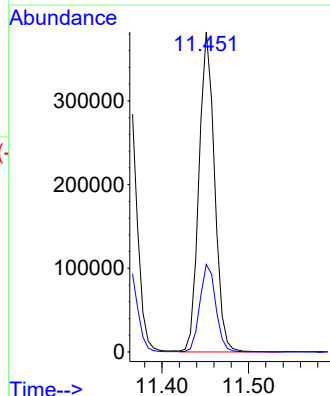
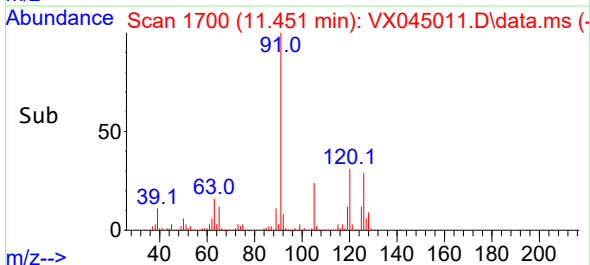
Tgt Ion: 75 Resp: 59873
 Ion Ratio Lower Upper
 75 100
 53 98.0 45.3 135.9
 89 44.5 23.8 71.2

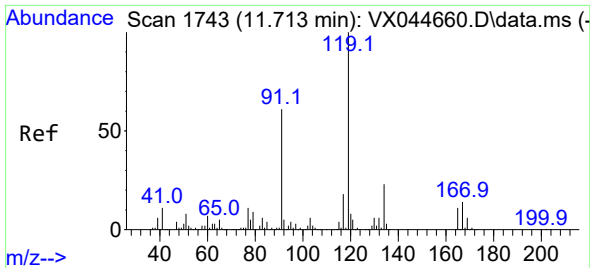


#78
 4-Chlorotoluene
 Concen: 103.17 ug/l
 RT: 11.451 min Scan# 1700
 Delta R.T. 0.000 min
 Lab File: VX045011.D
 Acq: 21 Feb 2025 11:07



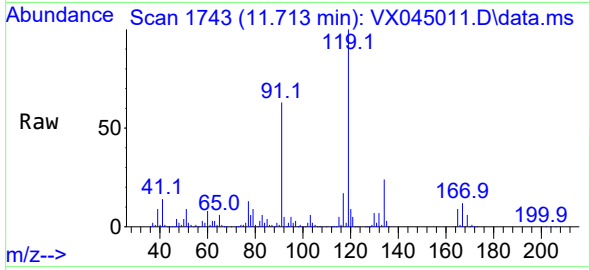
Tgt Ion: 91 Resp: 477861
 Ion Ratio Lower Upper
 91 100
 126 27.9 0.0 55.4



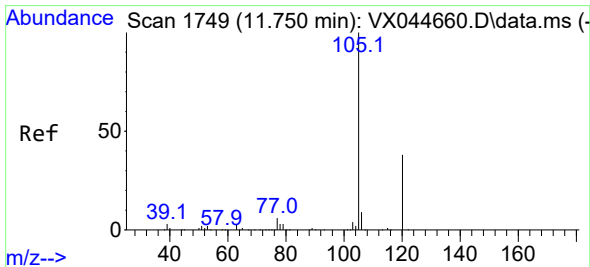
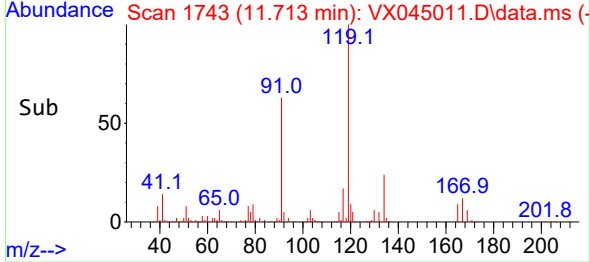
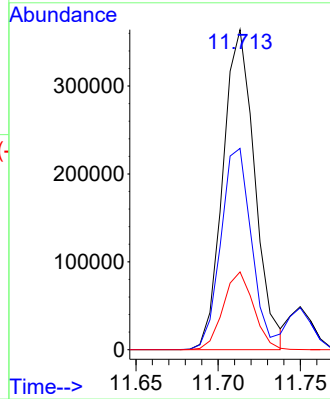


#79
 tert-butylbenzene
 Concen: 99.95 ug/l
 RT: 11.713 min Scan# 1743
 Delta R.T. 0.000 min
 Lab File: VX045011.D
 Acq: 21 Feb 2025 11:07

Instrument :
 MSVOA_N
 ClientSampleId :

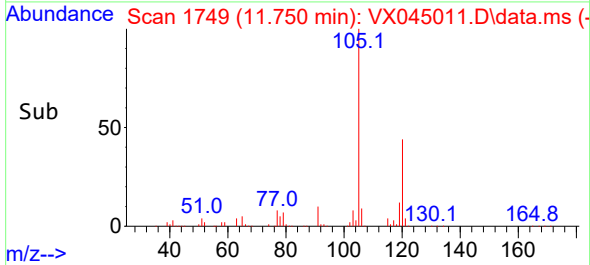
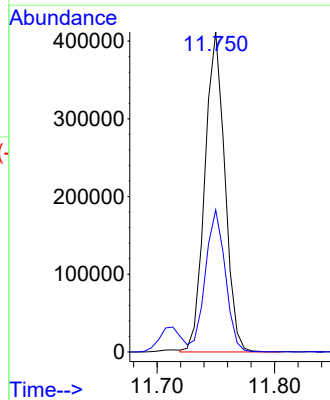
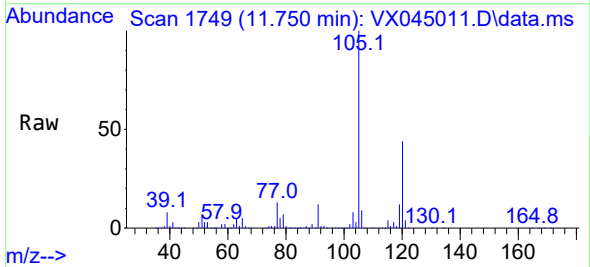


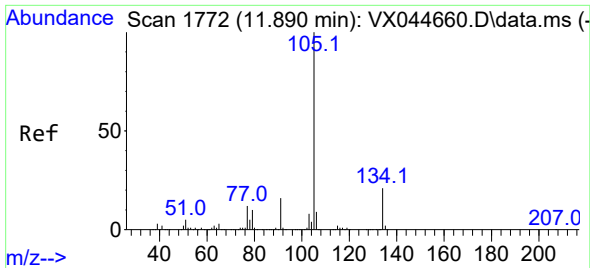
Tgt Ion:119 Resp: 490816
 Ion Ratio Lower Upper
 119 100
 91 60.1 0.0 119.0
 134 23.2 0.0 44.8



#80
 1,2,4-Trimethylbenzene
 Concen: 100.93 ug/l
 RT: 11.750 min Scan# 1749
 Delta R.T. 0.000 min
 Lab File: VX045011.D
 Acq: 21 Feb 2025 11:07

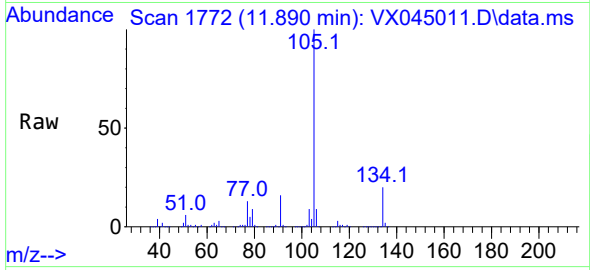
Tgt Ion:105 Resp: 486770
 Ion Ratio Lower Upper
 105 100
 120 44.4 0.0 88.4



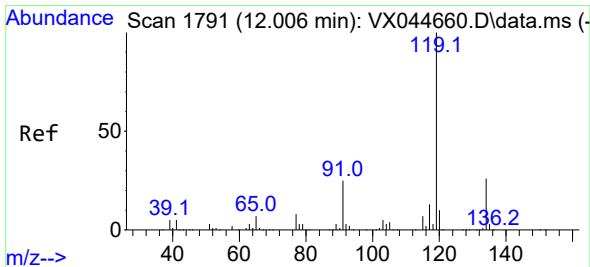
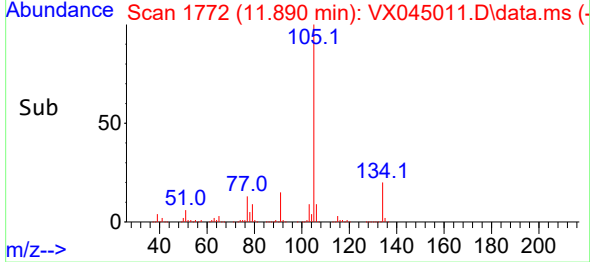
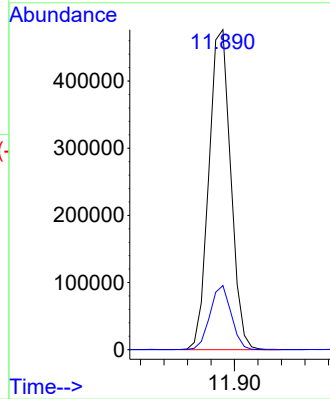


#81
 sec-Butylbenzene
 Concen: 105.12 ug/l
 RT: 11.890 min Scan# 1772
 Delta R.T. 0.000 min
 Lab File: VX045011.D
 Acq: 21 Feb 2025 11:07

Instrument :
 MSVOA_N
 ClientSampleId :

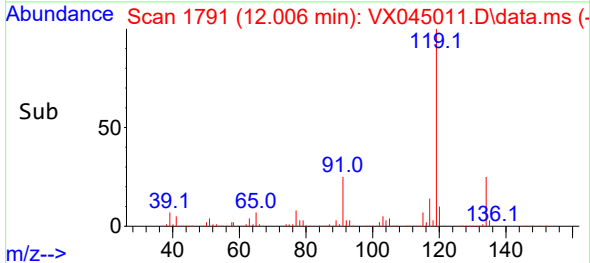
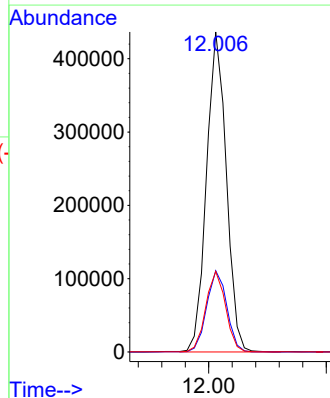
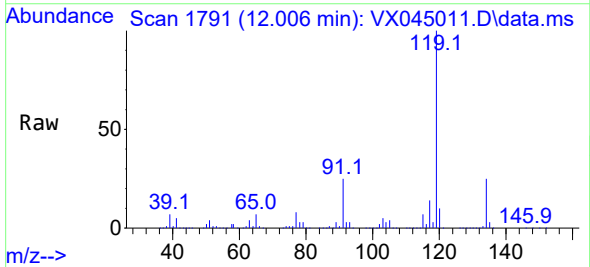


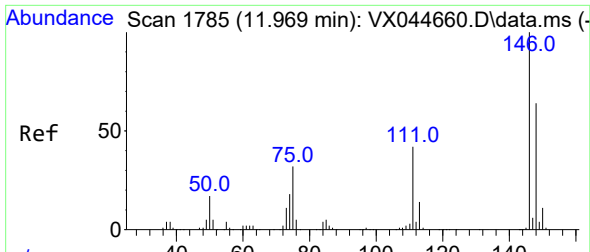
Tgt Ion:105 Resp: 616448
 Ion Ratio Lower Upper
 105 100
 134 19.5 0.0 39.6



#82
 p-Isopropyltoluene
 Concen: 105.72 ug/l
 RT: 12.006 min Scan# 1791
 Delta R.T. 0.000 min
 Lab File: VX045011.D
 Acq: 21 Feb 2025 11:07

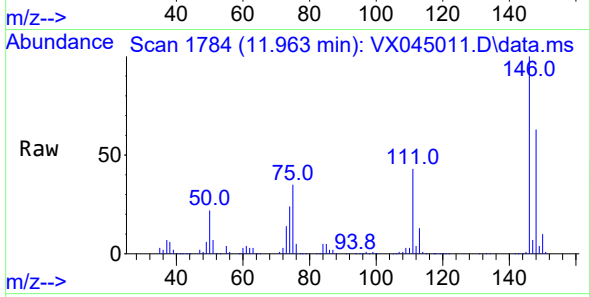
Tgt Ion:119 Resp: 510223
 Ion Ratio Lower Upper
 119 100
 134 25.8 0.0 52.2
 91 25.1 0.0 50.2



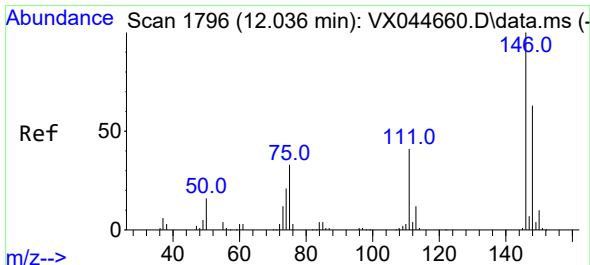
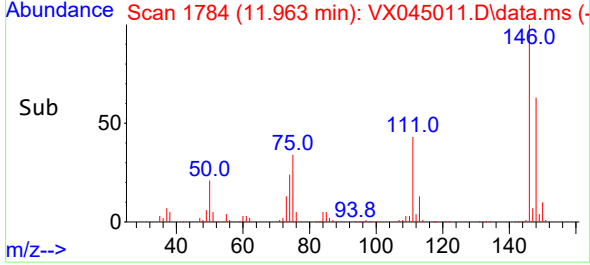
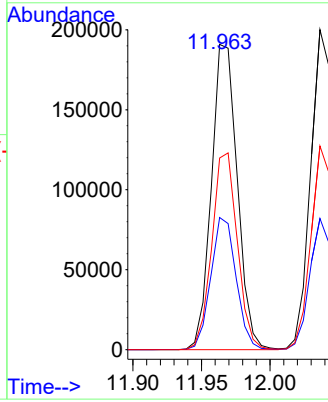


#83
 1,3-Dichlorobenzene
 Concen: 102.95 ug/l
 RT: 11.963 min Scan# 1784
 Delta R.T. -0.006 min
 Lab File: VX045011.D
 Acq: 21 Feb 2025 11:07

Instrument : MSVOA_N
 ClientSampleId :

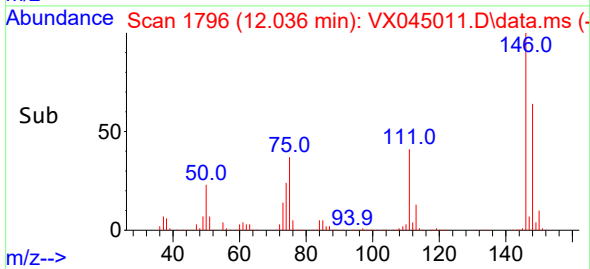
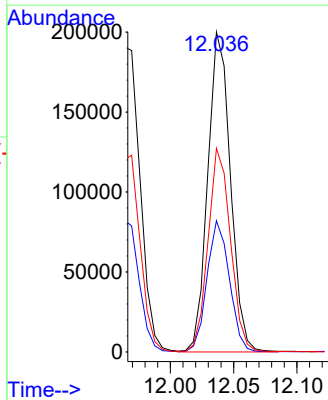
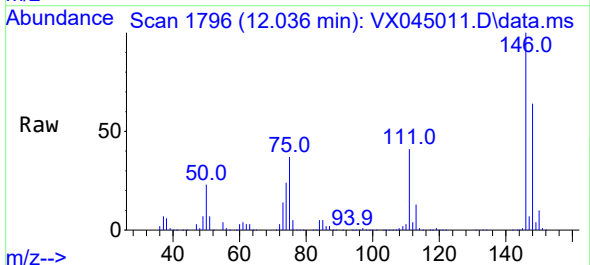


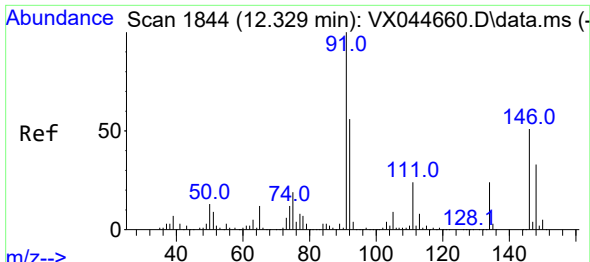
Tgt Ion:146 Resp: 250755
 Ion Ratio Lower Upper
 146 100
 111 42.3 21.6 64.6
 148 63.5 31.6 94.7



#84
 1,4-Dichlorobenzene
 Concen: 104.56 ug/l
 RT: 12.036 min Scan# 1796
 Delta R.T. 0.000 min
 Lab File: VX045011.D
 Acq: 21 Feb 2025 11:07

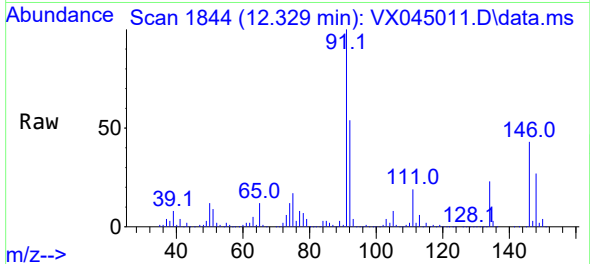
Tgt Ion:146 Resp: 249668
 Ion Ratio Lower Upper
 146 100
 111 40.5 20.8 62.5
 148 63.2 32.1 96.5



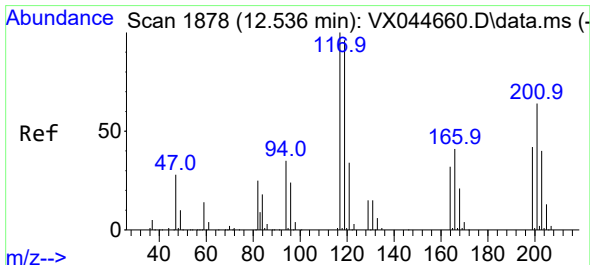
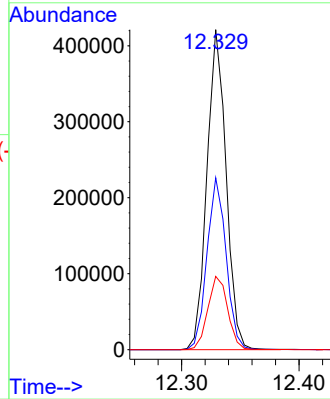
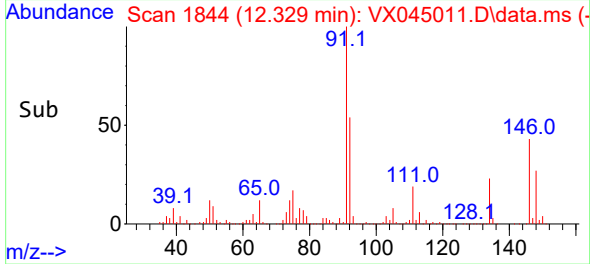


#85
 n-Butylbenzene
 Concen: 113.89 ug/l
 RT: 12.329 min Scan# 1844
 Delta R.T. 0.000 min
 Lab File: VX045011.D
 Acq: 21 Feb 2025 11:07

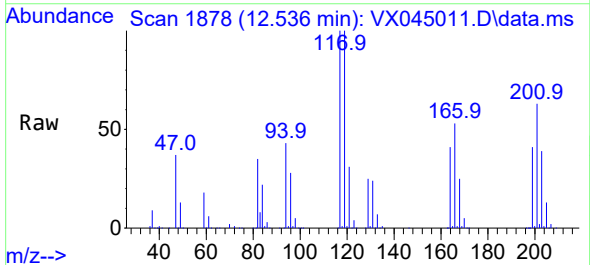
Instrument : MSVOA_N
 ClientSampleId :



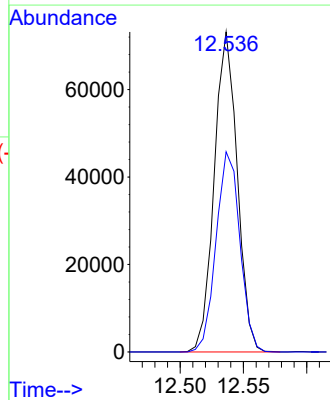
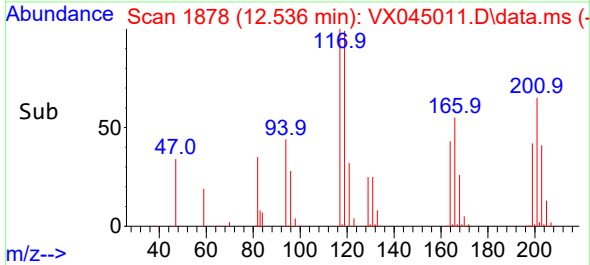
Tgt Ion: 91 Resp: 476457
 Ion Ratio Lower Upper
 91 100
 92 53.7 0.0 109.4
 134 23.8 0.0 49.2

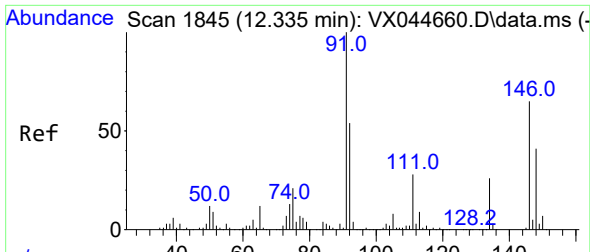


#86
 Hexachloroethane
 Concen: 87.12 ug/l
 RT: 12.536 min Scan# 1878
 Delta R.T. 0.000 min
 Lab File: VX045011.D
 Acq: 21 Feb 2025 11:07



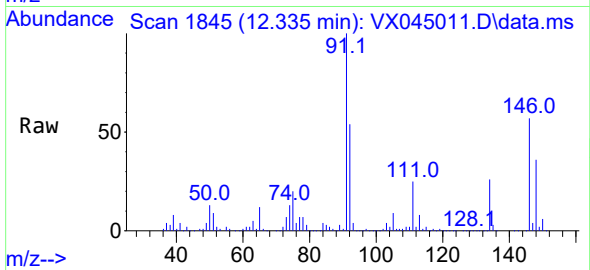
Tgt Ion: 117 Resp: 92493
 Ion Ratio Lower Upper
 117 100
 201 64.8 33.0 98.9



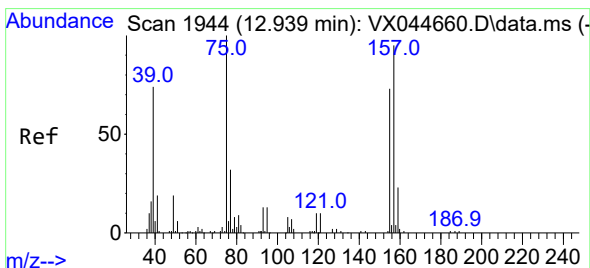
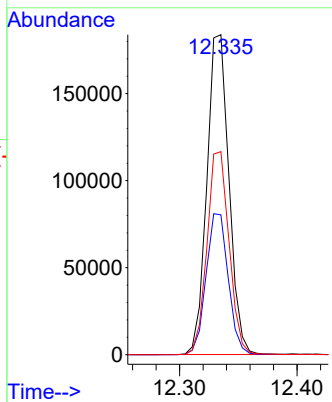
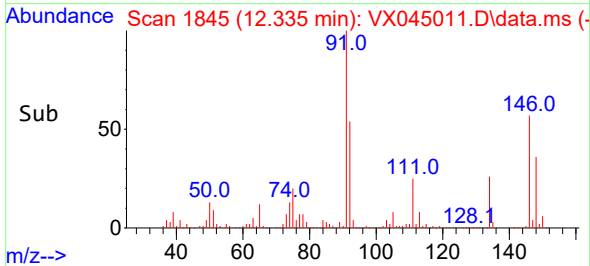


#87
 1,2-Dichlorobenzene
 Concen: 98.70 ug/l
 RT: 12.335 min Scan# 1845
 Delta R.T. 0.000 min
 Lab File: VX045011.D
 Acq: 21 Feb 2025 11:07

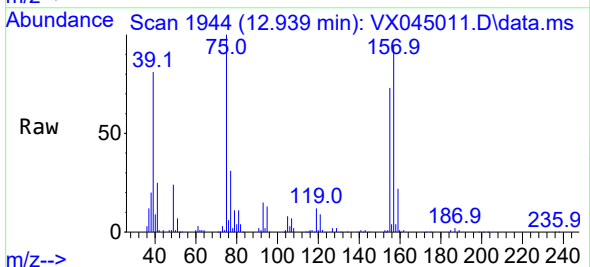
Instrument : MSVOA_N
 ClientSampleId :



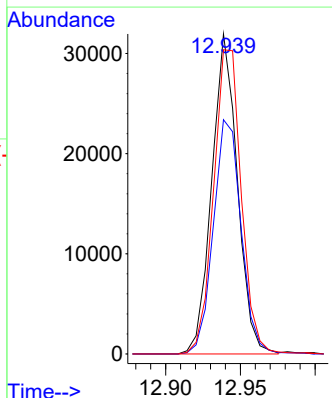
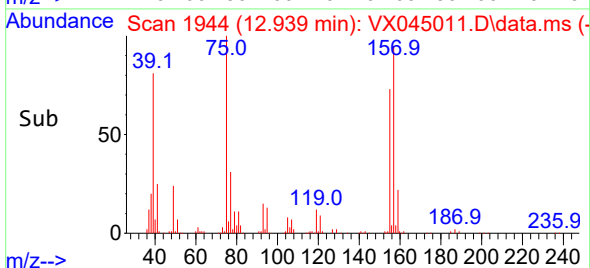
Tgt Ion:146 Resp: 240056
 Ion Ratio Lower Upper
 146 100
 111 44.4 22.2 66.6
 148 63.5 32.1 96.3

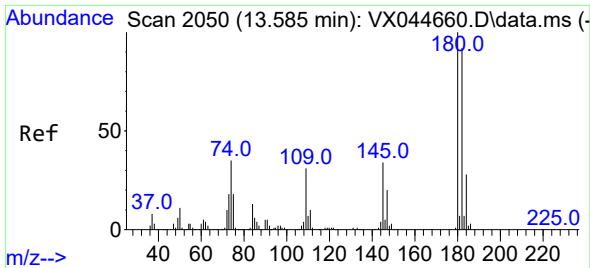


#88
 1,2-Dibromo-3-Chloropropane
 Concen: 79.65 ug/l
 RT: 12.939 min Scan# 1944
 Delta R.T. 0.000 min
 Lab File: VX045011.D
 Acq: 21 Feb 2025 11:07



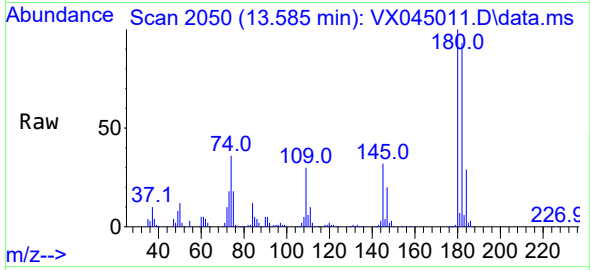
Tgt Ion: 75 Resp: 37960
 Ion Ratio Lower Upper
 75 100
 155 79.6 62.3 93.5
 157 103.3 79.9 119.9



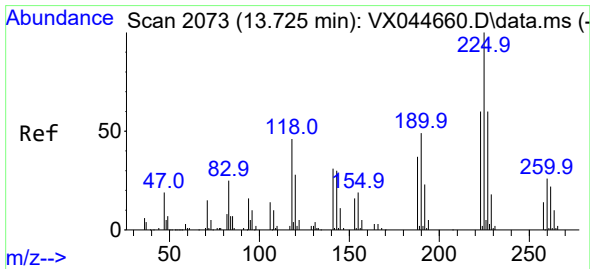
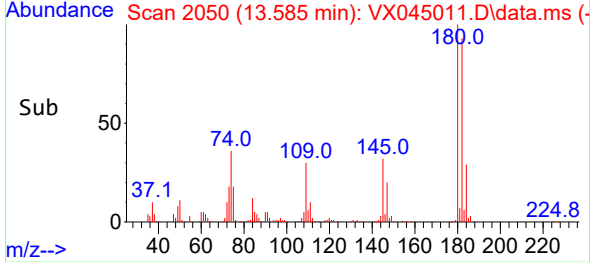
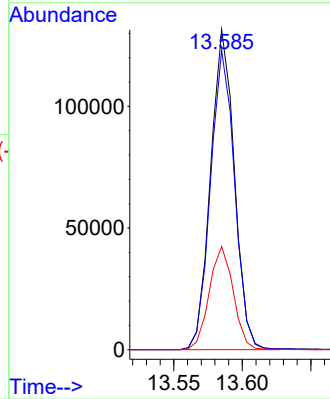


#89
 1,2,4-Trichlorobenzene
 Concen: 104.93 ug/l
 RT: 13.585 min Scan# 2050
 Delta R.T. 0.000 min
 Lab File: VX045011.D
 Acq: 21 Feb 2025 11:07

Instrument : MSVOA_N
 ClientSampleId :

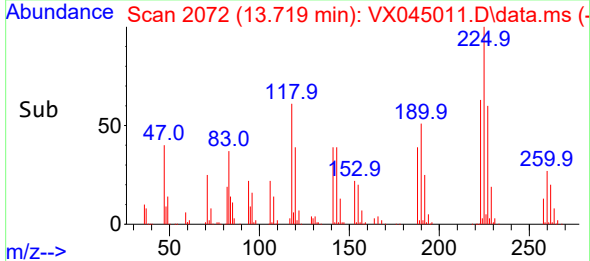
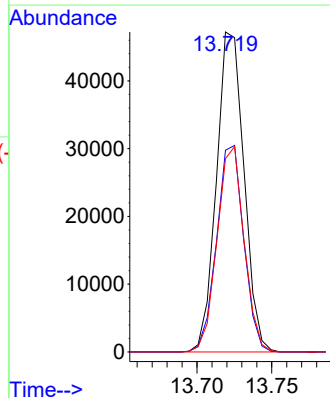
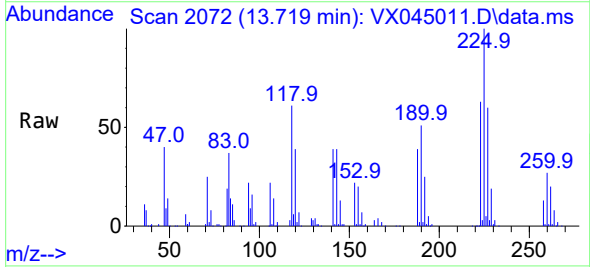


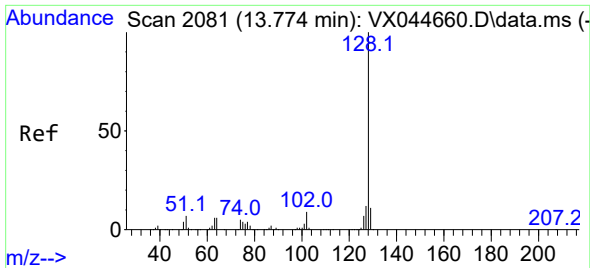
Tgt Ion:180 Resp: 158594
 Ion Ratio Lower Upper
 180 100
 182 94.7 75.6 113.4
 145 32.6 26.6 40.0



#90
 Hexachlorobutadiene
 Concen: 103.59 ug/l
 RT: 13.719 min Scan# 2072
 Delta R.T. -0.006 min
 Lab File: VX045011.D
 Acq: 21 Feb 2025 11:07

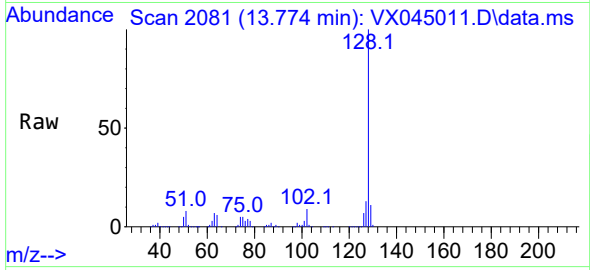
Tgt Ion:225 Resp: 60565
 Ion Ratio Lower Upper
 225 100
 223 63.5 0.0 123.0
 227 62.6 0.0 124.2



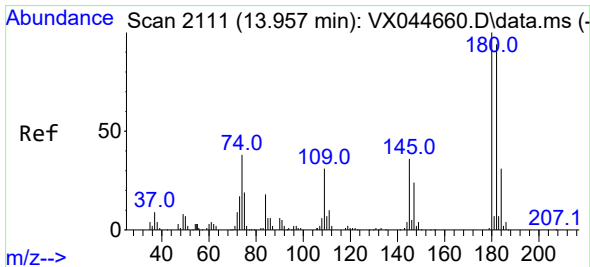
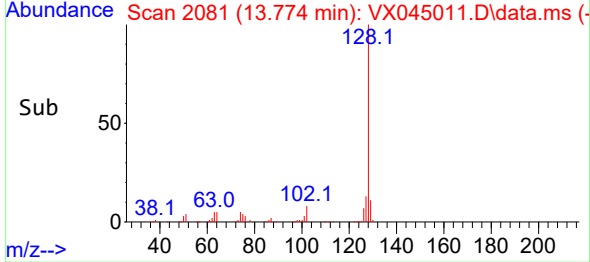
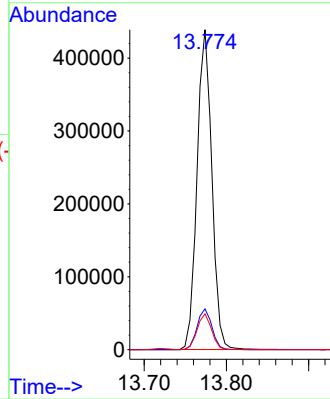


#91
 Naphthalene
 Concen: 96.91 ug/l
 RT: 13.774 min Scan# 2081
 Delta R.T. 0.000 min
 Lab File: VX045011.D
 Acq: 21 Feb 2025 11:07

Instrument :
 MSVOA_N
 ClientSampleId :



Tgt Ion:128 Resp: 548026
 Ion Ratio Lower Upper
 128 100
 127 12.9 10.2 15.4
 129 11.0 9.0 13.6



#92
 1,2,3-Trichlorobenzene
 Concen: 103.35 ug/l
 RT: 13.957 min Scan# 2111
 Delta R.T. 0.000 min
 Lab File: VX045011.D
 Acq: 21 Feb 2025 11:07

Tgt Ion:180 Resp: 158881
 Ion Ratio Lower Upper
 180 100
 182 92.9 0.0 187.8
 145 34.3 0.0 69.8

