

Data Path : Z:\VOASRV\HPCHEM1\MSVOA N\DATA\VN022119\
 Data File : VN053888.D
 Acq On : 21 Feb 2019 13:23
 Operator : JC/SP
 Sample : K1540-05
 Misc : 5.00mL/MSVOA N/WATER
 ALS Vial : 12 Sample Multiplier: 1

Instrument :
 MSVOA_N
 ClientSampleId :
 M1-T0-OZ(PRE)

Integration Parameters: RTEINT.P

Integrator: RTE
 Smoothing : ON Filtering: 5
 Sampling : 1 Min Area: 3 % of largest Peak
 Start Thrs: 0.2 Max Peaks: 100
 Stop Thrs : 0 Peak Location: TOP

If leading or trailing edge < 100 prefer < Baseline drop else tangent >
 Peak separation: 5

Method : Z:\VOASRV\HPCHEM1\MSVOA_N\METHODS\82N022019W.M
 Title : SW846 8260

Signal : TIC

peak #	R.T. min	first scan	max scan	last scan	PK TY	peak height	corr. area	corr. % max.	% of total
1	5.046	995	1018	1043	rBV3	29127	105461	3.35%	0.534%
2	6.831	1556	1573	1593	rBV6	38208	120648	3.83%	0.610%
3	7.590	1789	1809	1821	rBV	423389	1059710	33.66%	5.362%
4	7.667	1821	1833	1879	rVB	620502	1577291	50.11%	7.980%
5	8.027	1927	1945	1971	rBV	377154	897256	28.50%	4.540%
6	8.342	1984	2043	2070	rBV3	46527	394017	12.52%	1.994%
7	8.586	2103	2119	2171	rBV	991795	2215944	70.39%	11.211%
8	8.837	2180	2197	2247	rVB	1388783	3015621	95.80%	15.257%
9	10.091	2571	2587	2632	rBV	1560859	3147936	100.00%	15.927%
10	10.631	2742	2755	2786	rVB	245490	477670	15.17%	2.417%
11	11.410	2980	2997	3023	rBV	1438889	2660112	84.50%	13.459%
12	12.403	3291	3306	3323	rBV	1196915	2016830	64.07%	10.204%
13	13.345	3585	3599	3614	rBV	1249008	2076560	65.97%	10.506%

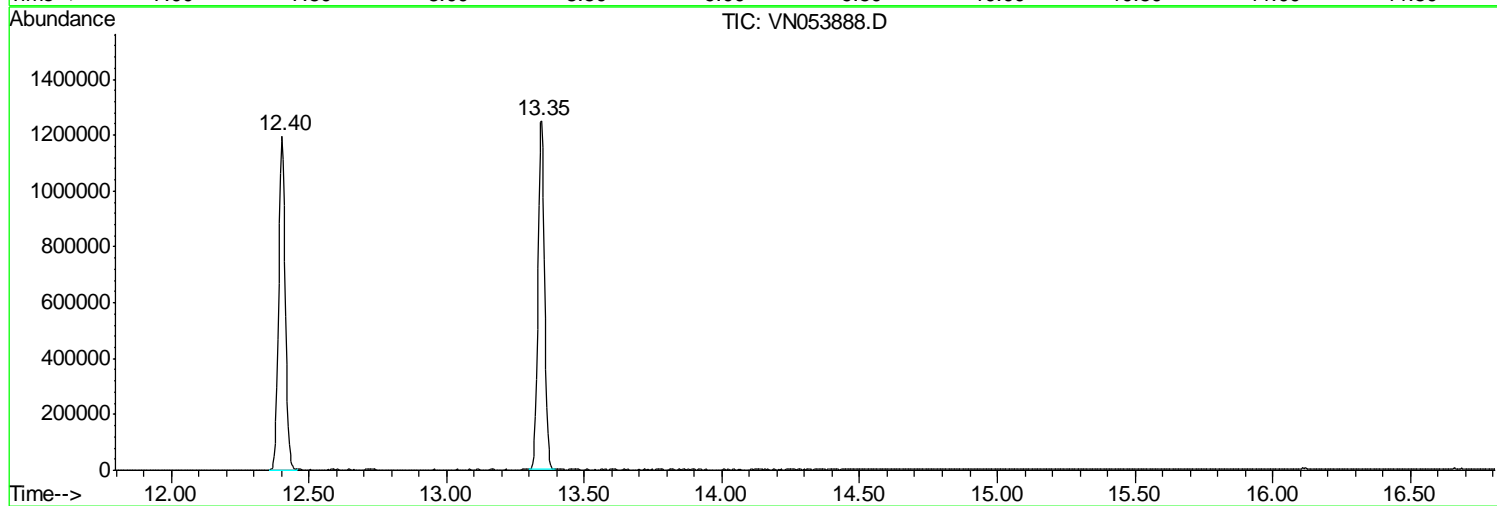
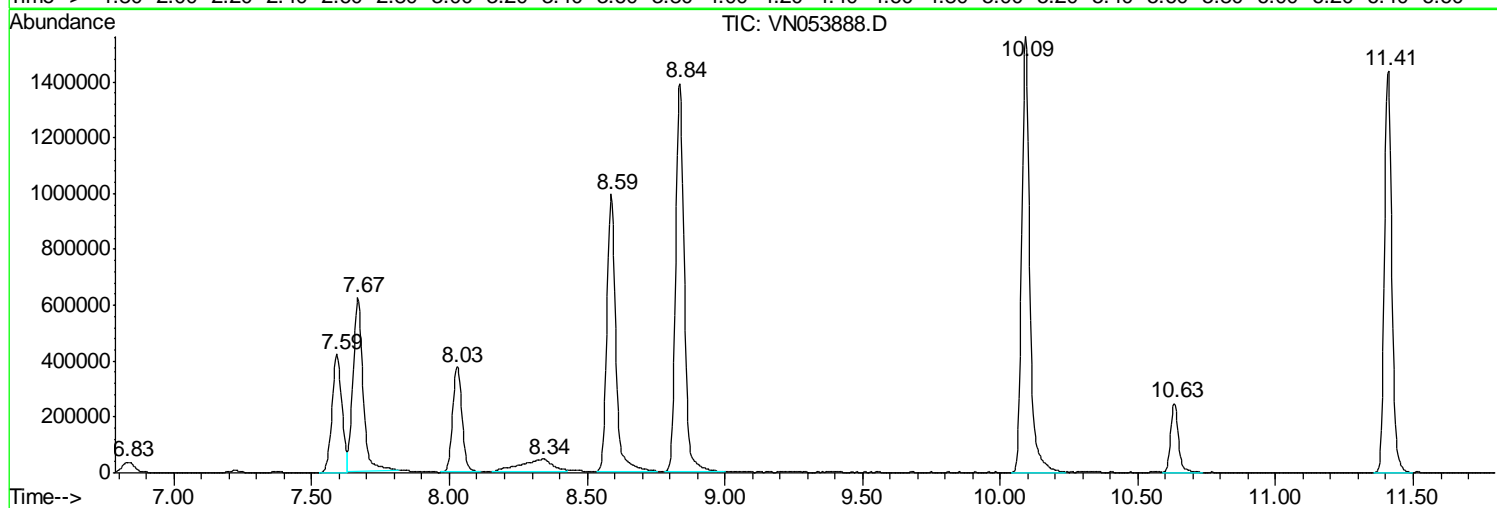
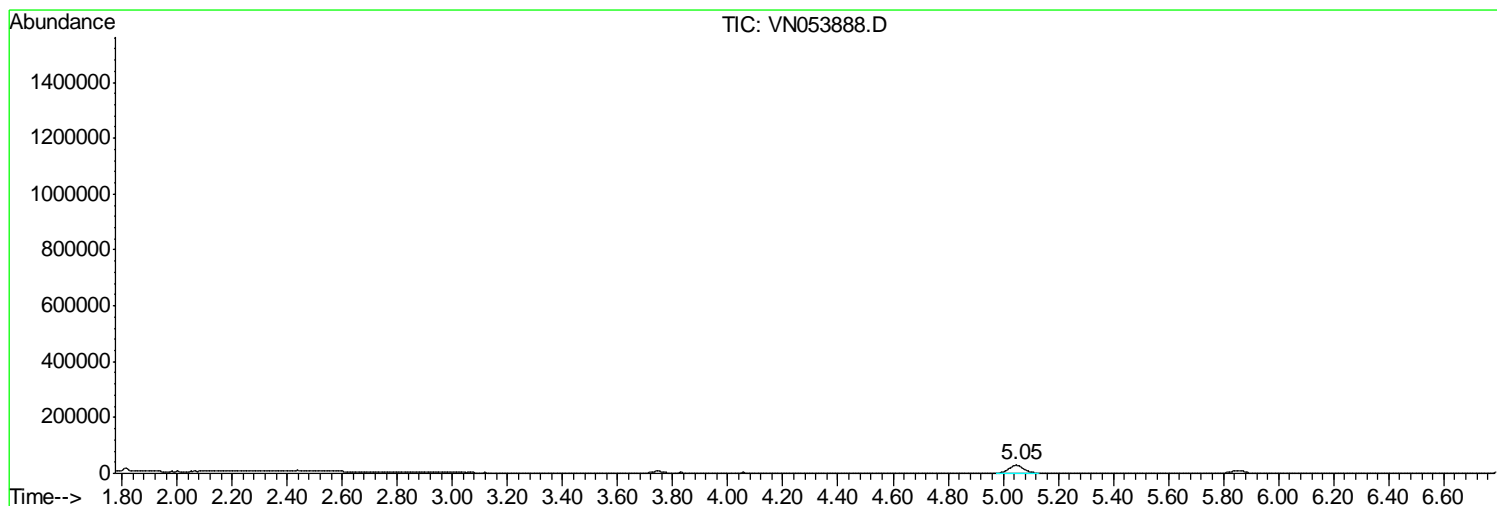
Sum of corrected areas: 19765056

Data Path : Z:\VOASRV\HPCHEM1\MSVOA N\DATA\VN022119\
 Data File : VN053888.D
 Acq On : 21 Feb 2019 13:23
 Operator : JC/SP
 Sample : K1540-05
 Misc : 5.00mL/MSVOA N/WATER
 ALS Vial : 12 Sample Multiplier: 1

Instrument :
 MSVOA_N
 ClientSampleId :
 M1-T0-OZ(PRE)

Quant Method : Z:\VOASRV\HPCHEM1\MSVOA_N\METHODS\82N022019W.M
 Quant Title : SW846 8260

TIC Library : C:\DATABASE\NIST11.L
 TIC Integration Parameters: LSCINT.P



Data Path : Z:\VOASRV\HPCHEM1\MSVOA_N\DATA\VN022119\
Data File : VN053888.D
Acq On : 21 Feb 2019 13:23
Operator : JC/SP
Sample : K1540-05
Misc : 5.00mL/MSVOA_N/WATER
ALS Vial : 12 Sample Multiplier: 1

Instrument :
MSVOA_N
ClientSampleId :
M1-T0-OZ(PRE)

Quant Method : Z:\VOASRV\HPCHEM1\MSVOA_N\METHODS\82N022019W.M
Quant Title : SW846 8260

TIC Library : C:\DATABASE\NIST11.L
TIC Integration Parameters: LSCINT.P

No Library Search Compounds Detected

Data Path : Z:\VOASRV\HPCHEM1\MSVOA_N\DATA\VN022119\
Data File : VN053888.D
Acq On : 21 Feb 2019 13:23
Operator : JC/SP
Sample : K1540-05
Misc : 5.00mL/MSVOA_N/WATER
ALS Vial : 12 Sample Multiplier: 1

Instrument :
MSVOA_N
ClientSampleId :
M1-T0-OZ(PRE)

Quant Method : Z:\VOASRV\HPCHEM1\MSVOA_N\METHODS\82N022019W.M
Quant Title : SW846 8260

TIC Library : C:\DATABASE\NIST11.L
TIC Integration Parameters: LSCINT.P

TIC Top Hit name	RT	EstConc	Units	Response	--Internal Standard--			
					#	RT	Resp	Conc
