

Data Path : Z:\voasrv\HPCHEM1\MSVOA_N\Data\VN022221\
 Data File : VN065951.D
 Acq On : 22 Feb 2021 11:35
 Operator : JC/MD
 Sample : VN0222WBL01
 Misc : 5.00mL/MSVOA_N/WATER
 ALS Vial : 4 Sample Multiplier: 1

Instrument :
 MSVOA_N
 ClientSampleId :
 VN0222WBL01

Quant Time: Feb 22 15:10:41 2021
 Quant Method : Z:\voasrv\HPCHEM1\MSVOA_N\methods\82N021721W.M
 Quant Title : SW846 8260
 QLast Update : Wed Feb 17 15:48:13 2021
 Response via : Initial Calibration

Compound	R.T.	QIon	Response	Conc	Units	Dev(Min)

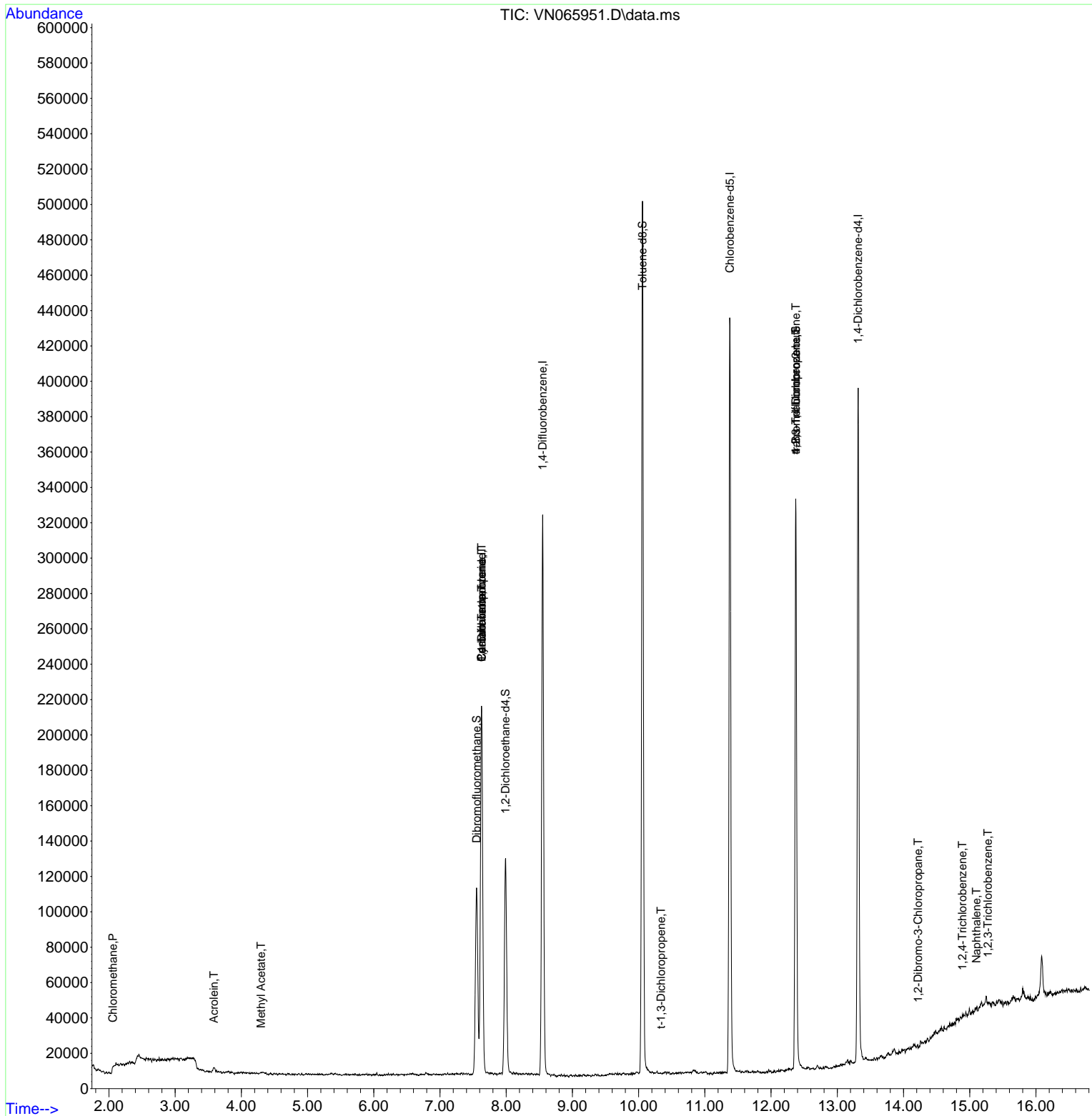
Internal Standards						
1) Pentafluorobenzene	7.627	168	172490	50.00	ug/l	0.00
34) 1,4-Difluorobenzene	8.550	114	288949	50.00	ug/l	0.00
63) Chlorobenzene-d5	11.376	117	259796	50.00	ug/l	0.00
72) 1,4-Dichlorobenzene-d4	13.315	152	109107	50.00	ug/l	0.00
System Monitoring Compounds						
33) 1,2-Dichloroethane-d4	7.991	65	110445	45.79	ug/l	0.00
Spiked Amount	50.000	Range 61 - 141	Recovery =	91.58%		
35) Dibromofluoromethane	7.553	113	83358	46.61	ug/l	0.00
Spiked Amount	50.000	Range 69 - 133	Recovery =	93.22%		
50) Toluene-d8	10.058	98	349004	47.54	ug/l	0.00
Spiked Amount	50.000	Range 65 - 126	Recovery =	95.08%		
62) 4-Bromofluorobenzene	12.373	95	127837	46.39	ug/l	0.00
Spiked Amount	50.000	Range 58 - 135	Recovery =	92.78%		
Target Compounds						
						Qvalue
3) Chloromethane	2.058	50	1643	0.58	ug/l	96
13) Acrolein	3.586	56	3462	11.28	ug/l	99
18) Methyl Acetate	4.296	43	795	0.40	ug/l #	86
31) Cyclohexane	7.627	56	3242	0.90	ug/l #	1
36) 1,1-Dichloropropene	7.627	75	12307	4.32	ug/l #	49
38) Carbon Tetrachloride	7.627	117	17037	6.43	ug/l #	18
53) t-1,3-Dichloropropene	10.338	75	281	2.06	ug/l #	1
76) 1,2,3-Trichloropropane	12.373	75	61896	23.61	ug/l #	100
81) trans-1,4-Dichloro-2-b...	12.373	75	61982	75.36	ug/l #	12
92) 1,2-Dibromo-3-Chloropr...	14.219	75	182	1.19	ug/l #	1
93) 1,2,4-Trichlorobenzene	14.887	180	162	2.54	ug/l #	13
95) Naphthalene	15.103	128	526	3.13	ug/l #	69
96) 1,2,3-Trichlorobenzene	15.277	180	236	2.28	ug/l #	24

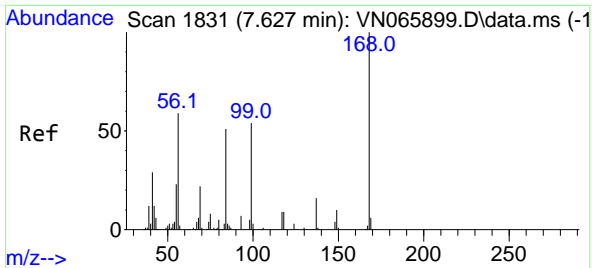
(#) = qualifier out of range (m) = manual integration (+) = signals summed

Data Path : Z:\voasrv\HPCHEM1\MSVOA_N\Data\VN022221\
 Data File : VN065951.D
 Acq On : 22 Feb 2021 11:35
 Operator : JC/MD
 Sample : VN0222WBL01
 Misc : 5.00mL/MSVOA_N/WATER
 ALS Vial : 4 Sample Multiplier: 1

Instrument :
 MSVOA_N
 Client Sampled :
 VN0222WBL01

Quant Time: Feb 22 15:10:41 2021
 Quant Method : Z:\voasrv\HPCHEM1\MSVOA_N\methods\82N021721W.M
 Quant Title : SW846 8260
 QLast Update : Wed Feb 17 15:48:13 2021
 Response via : Initial Calibration

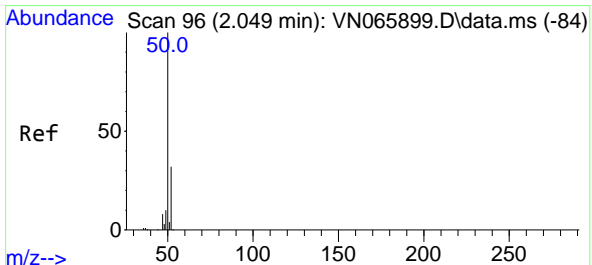
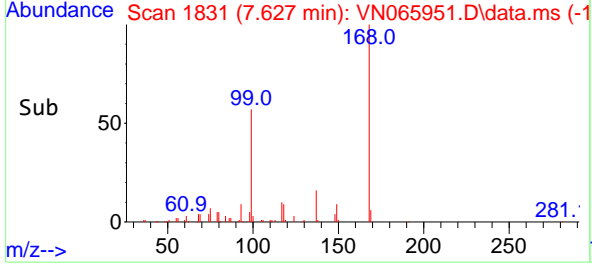
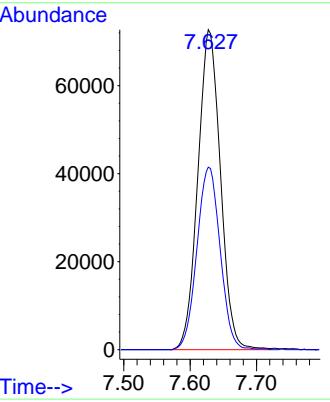
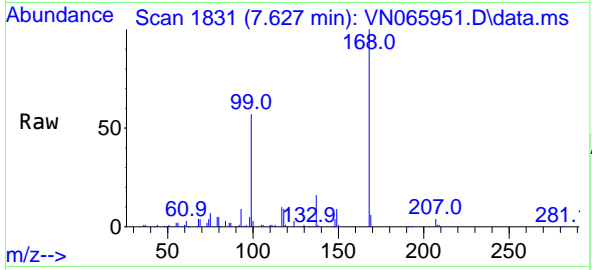




#1
 Pentafluorobenzene
 Concen: 50.00 ug/l
 RT: 7.627 min Scan# 1831
 Delta R.T. 0.000 min
 Lab File: VN065951.D
 Acq: 22 Feb 2021 11:35

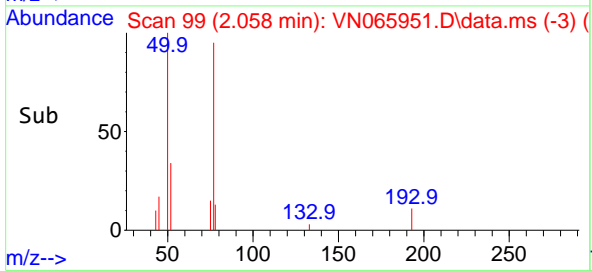
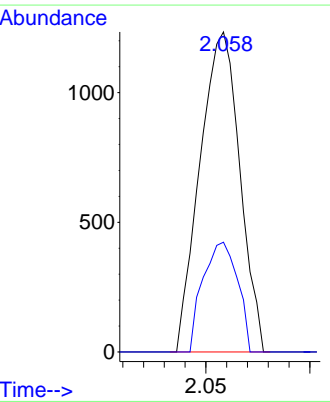
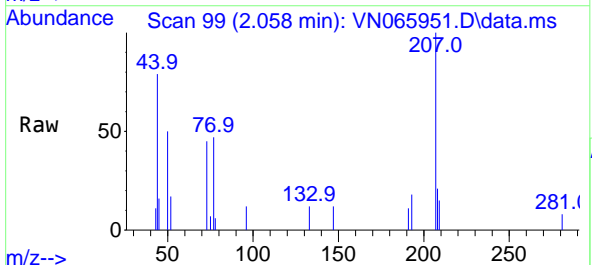
Instrument :
 MSVOA_N
ClientSampled :
 VN0222WBL01

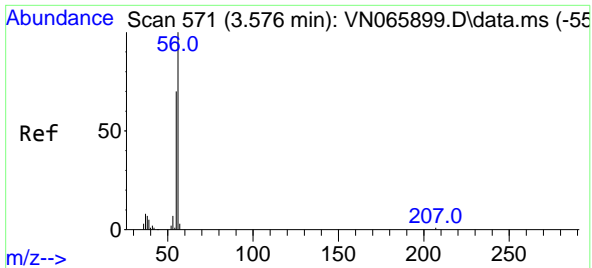
Tgt Ion:168 Resp: 172490
 Ion Ratio Lower Upper
 168 100
 99 57.1 42.6 63.8



#3
 Chloromethane
 Concen: 0.58 ug/l
 RT: 2.058 min Scan# 99
 Delta R.T. 0.009 min
 Lab File: VN065951.D
 Acq: 22 Feb 2021 11:35

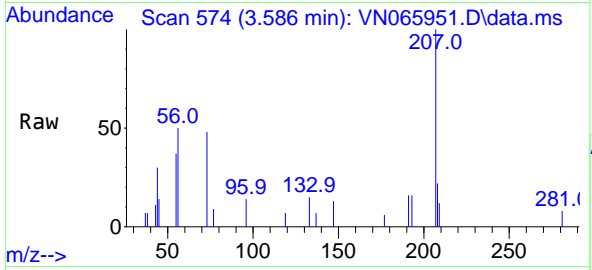
Tgt Ion: 50 Resp: 1643
 Ion Ratio Lower Upper
 50 100
 52 34.3 25.8 38.8



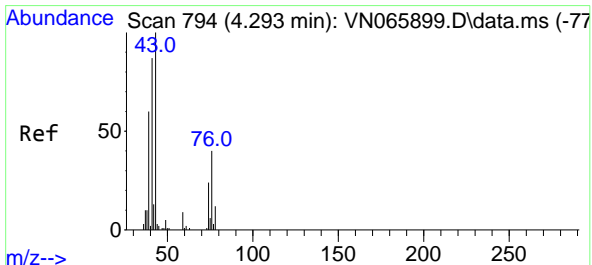
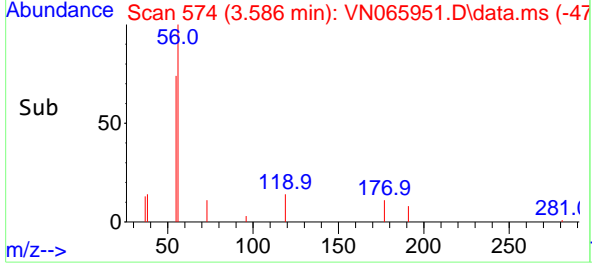
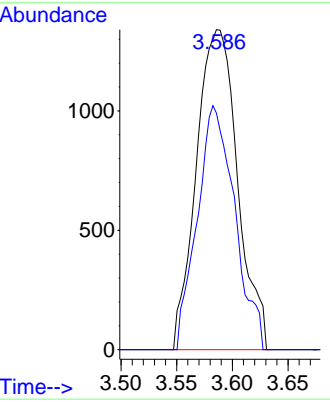


#13
 Acrolein
 Concen: 11.28 ug/l
 RT: 3.586 min Scan# 574
 Delta R.T. 0.010 min
 Lab File: VN065951.D
 Acq: 22 Feb 2021 11:35

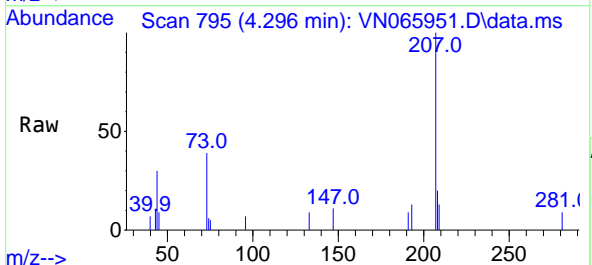
Instrument :
 MSVOA_N
ClientSampled :
 VN0222WBL01



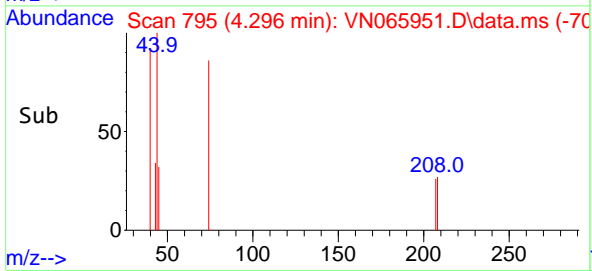
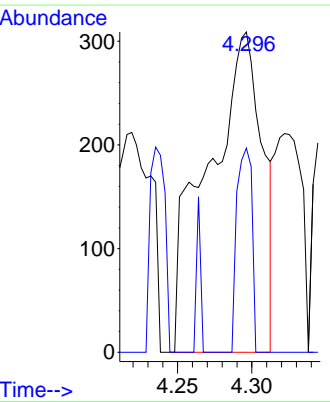
Tgt Ion: 56 Resp: 3462
 Ion Ratio Lower Upper
 56 100
 55 69.2 56.0 84.0

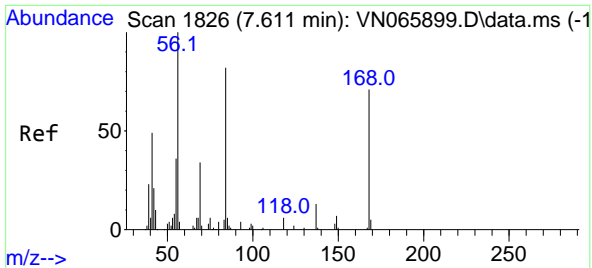


#18
 Methyl Acetate
 Concen: 0.40 ug/l
 RT: 4.296 min Scan# 795
 Delta R.T. 0.003 min
 Lab File: VN065951.D
 Acq: 22 Feb 2021 11:35



Tgt Ion: 43 Resp: 795
 Ion Ratio Lower Upper
 43 100
 74 17.4 19.5 29.3#



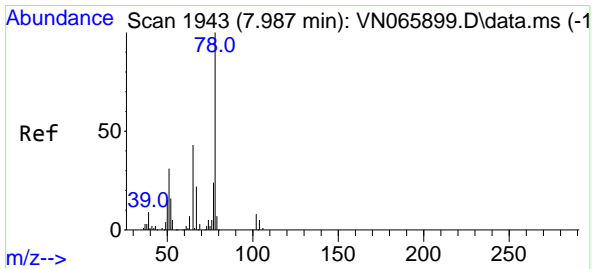
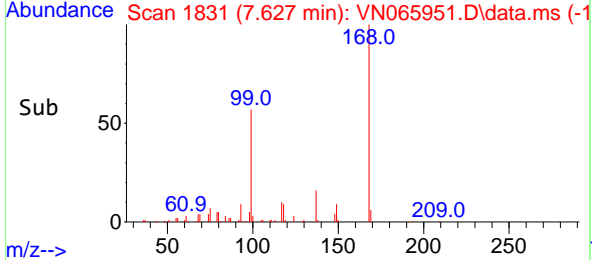
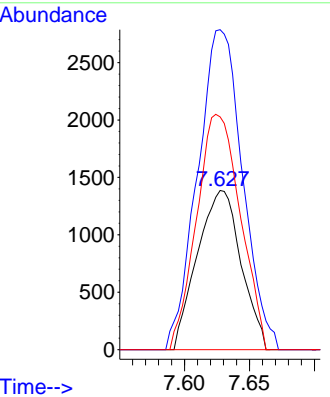
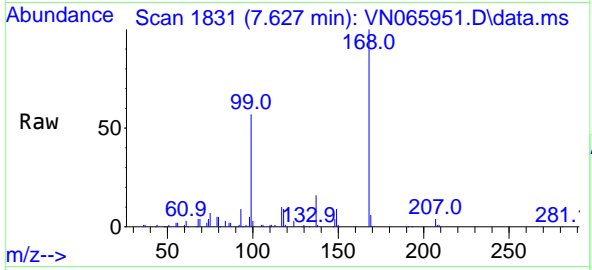


#31
 Cyclohexane
 Concen: 0.90 ug/l
 RT: 7.627 min Scan# 1831
 Delta R.T. 0.016 min
 Lab File: VN065951.D
 Acq: 22 Feb 2021 11:35

Instrument :
 MSVOA_N
 ClientSampled :
 VN0222WBL01

Tgt Ion: 56 Resp: 3242

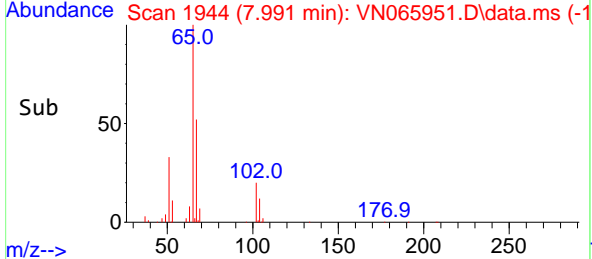
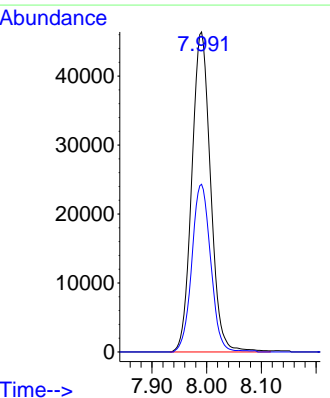
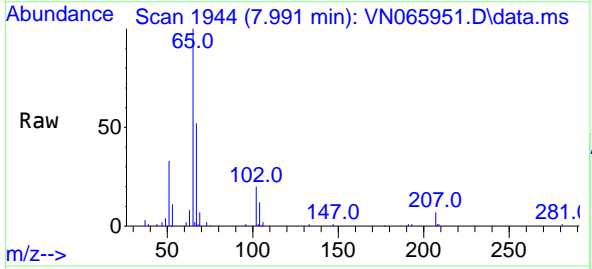
Ion	Ratio	Lower	Upper
56	100		
69	189.3	26.6	39.8#
84	146.1	70.4	105.6#

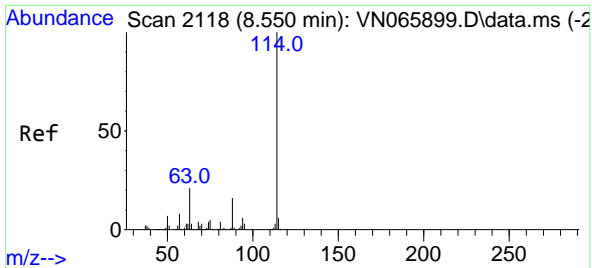


#33
 1,2-Dichloroethane-d4
 Concen: 45.79 ug/l
 RT: 7.991 min Scan# 1944
 Delta R.T. 0.004 min
 Lab File: VN065951.D
 Acq: 22 Feb 2021 11:35

Tgt Ion: 65 Resp: 110445

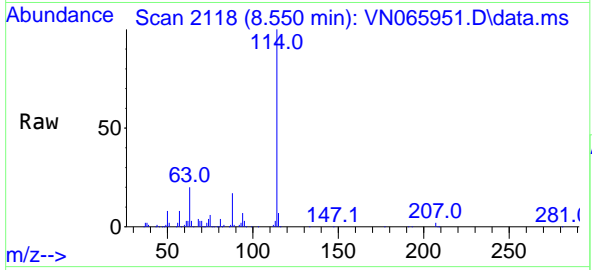
Ion	Ratio	Lower	Upper
65	100		
67	52.4	0.0	107.2





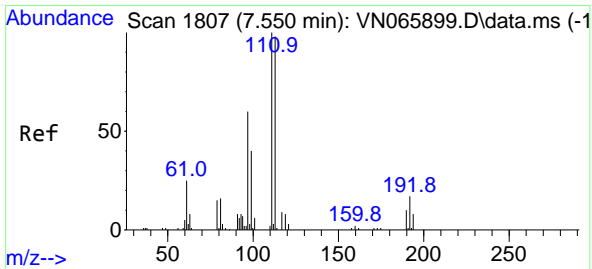
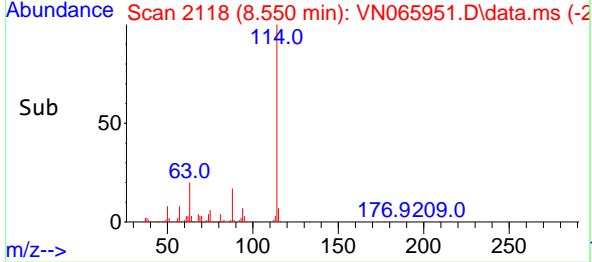
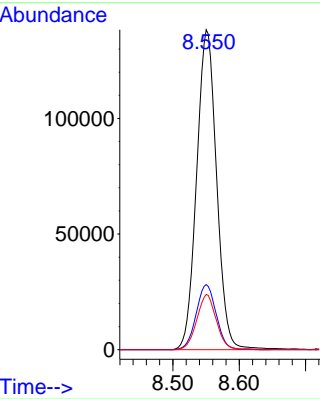
#34
 1,4-Difluorobenzene
 Concen: 50.00 ug/l
 RT: 8.550 min Scan# 2118
 Delta R.T. 0.000 min
 Lab File: VN065951.D
 Acq: 22 Feb 2021 11:35

Instrument :
 MSVOA_N
 ClientSampled :
 VN0222WBL01

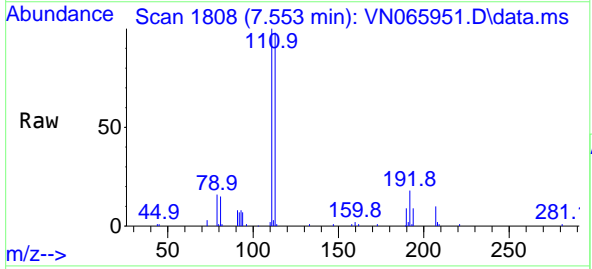


Tgt Ion:114 Resp: 288949

Ion	Ratio	Lower	Upper
114	100		
63	20.3	0.0	38.6
88	17.2	0.0	30.6

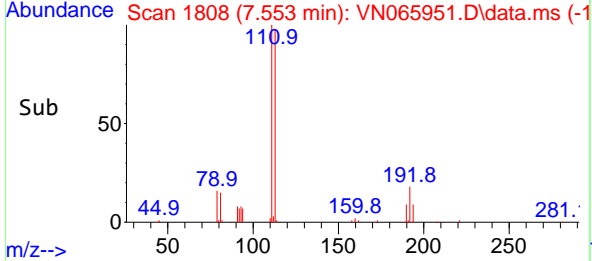
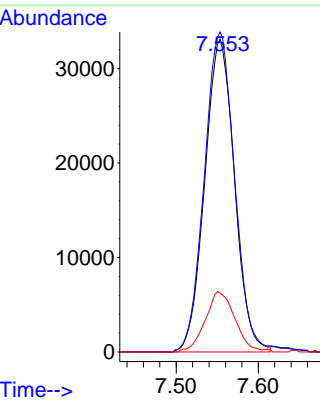


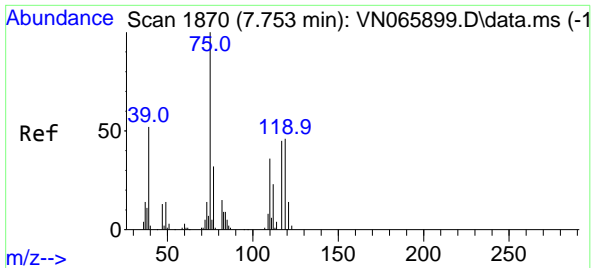
#35
 Dibromofluoromethane
 Concen: 46.61 ug/l
 RT: 7.553 min Scan# 1808
 Delta R.T. 0.003 min
 Lab File: VN065951.D
 Acq: 22 Feb 2021 11:35



Tgt Ion:113 Resp: 83358

Ion	Ratio	Lower	Upper
113	100		
111	105.1	82.2	123.2
192	19.2	15.4	23.0

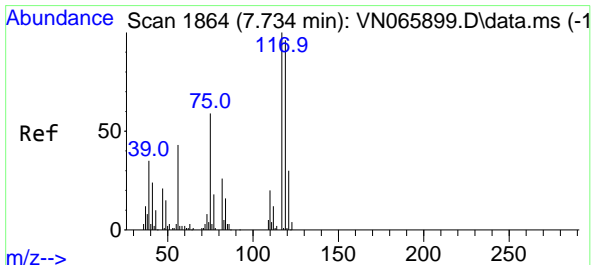
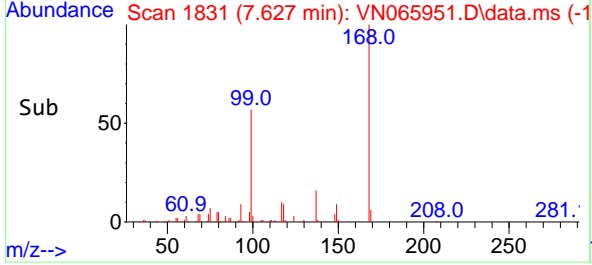
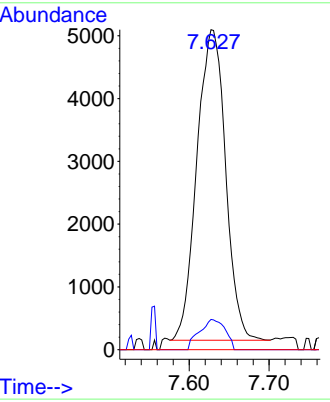
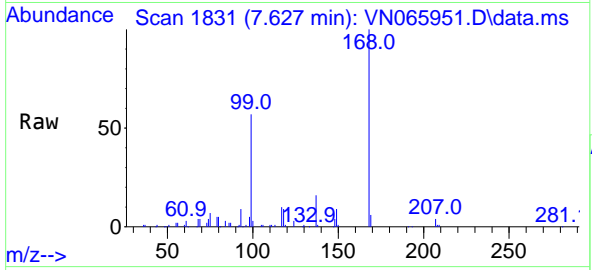




#36
 1,1-Dichloropropene
 Concen: 4.32 ug/l
 RT: 7.627 min Scan# 1831
 Delta R.T. -0.126 min
 Lab File: VN065951.D
 Acq: 22 Feb 2021 11:35

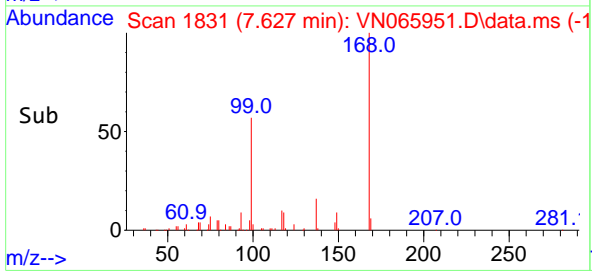
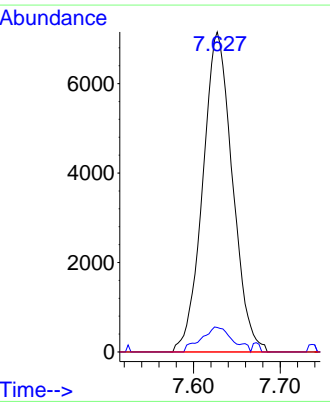
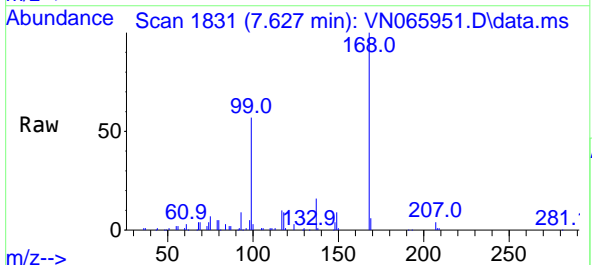
Instrument : MSVOA_N
 ClientSampled : VN0222WBL01

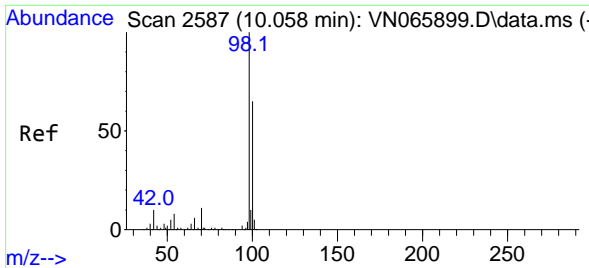
Tgt Ion	Resp	Lower	Upper
75	12307		
75	100		
110	8.8	18.2	54.6#
77	0.0	24.9	37.3#



#38
 Carbon Tetrachloride
 Concen: 6.43 ug/l
 RT: 7.627 min Scan# 1831
 Delta R.T. -0.107 min
 Lab File: VN065951.D
 Acq: 22 Feb 2021 11:35

Tgt Ion	Resp	Lower	Upper
117	17037		
117	100		
119	7.6	76.0	114.0#
121	0.0	24.5	36.7#

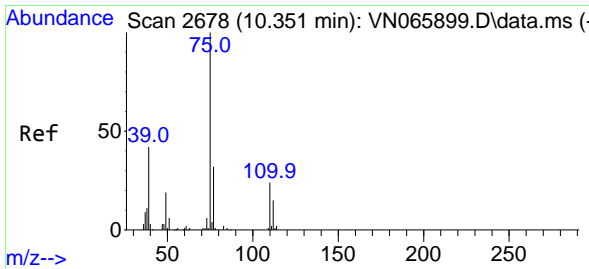
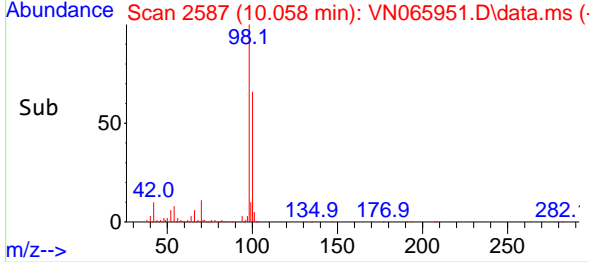
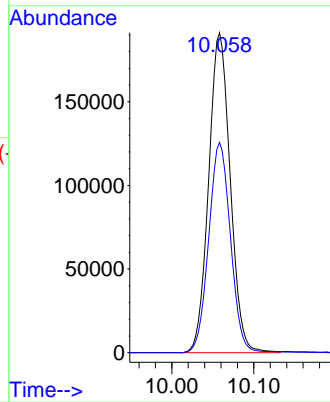
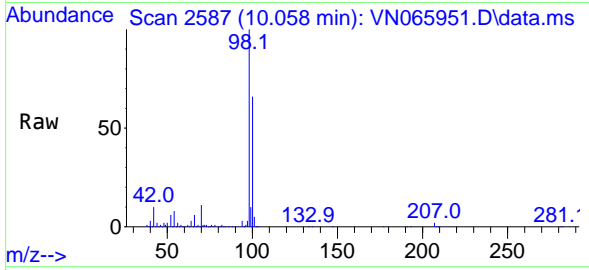




#50
 Toluene-d8
 Concen: 47.54 ug/l
 RT: 10.058 min Scan# 2587
 Delta R.T. 0.000 min
 Lab File: VN065951.D
 Acq: 22 Feb 2021 11:35

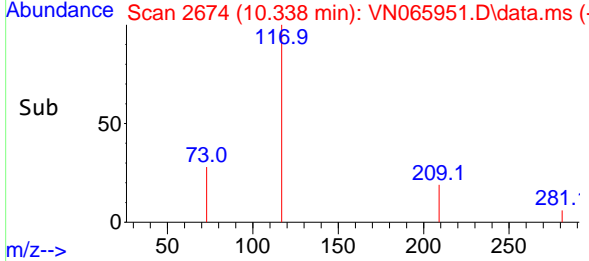
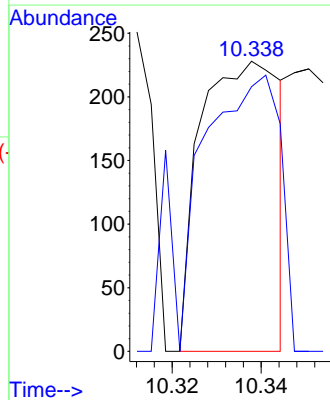
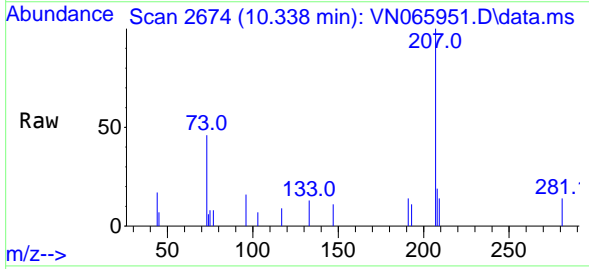
Instrument :
 MSVOA_N
 ClientSampled :
 VN0222WBL01

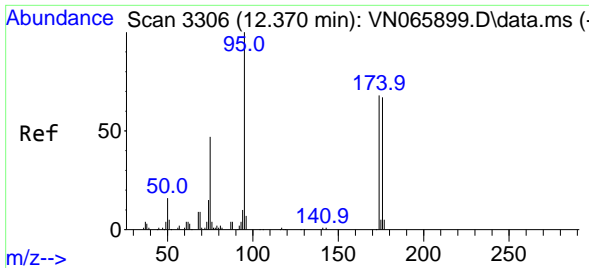
Tgt Ion: 98 Resp: 349004
 Ion Ratio Lower Upper
 98 100
 100 66.4 50.5 75.7



#53
 t-1,3-Dichloropropene
 Concen: 2.06 ug/l
 RT: 10.338 min Scan# 2674
 Delta R.T. -0.013 min
 Lab File: VN065951.D
 Acq: 22 Feb 2021 11:35

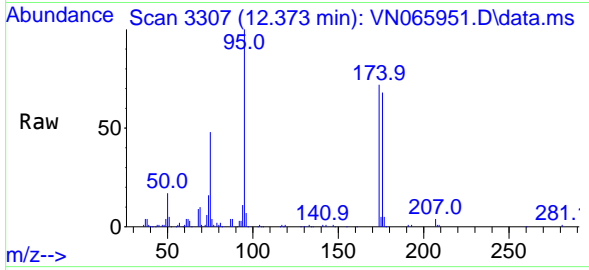
Tgt Ion: 75 Resp: 281
 Ion Ratio Lower Upper
 75 100
 77 91.2 26.2 39.4#



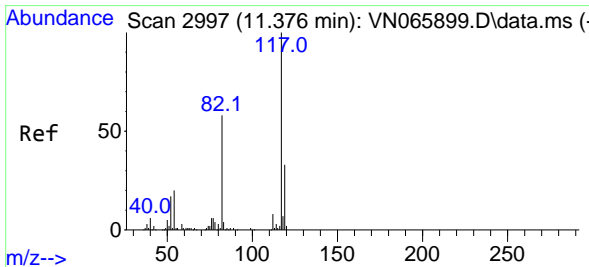
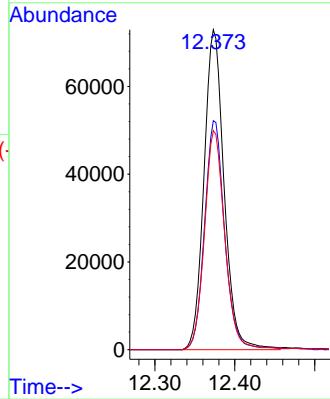
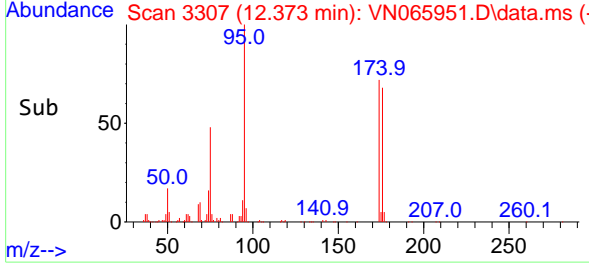


#62
 4-Bromofluorobenzene
 Concen: 46.39 ug/l
 RT: 12.373 min Scan# 3307
 Delta R.T. 0.003 min
 Lab File: VN065951.D
 Acq: 22 Feb 2021 11:35

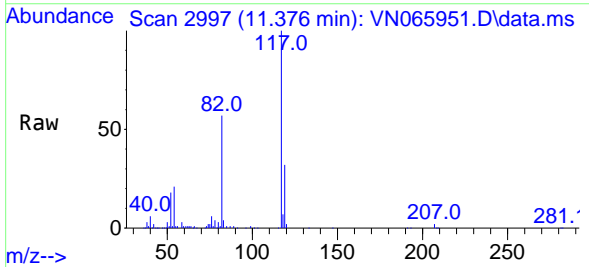
Instrument :
 MSVOA_N
 ClientSampleId :
 VN0222WBL01



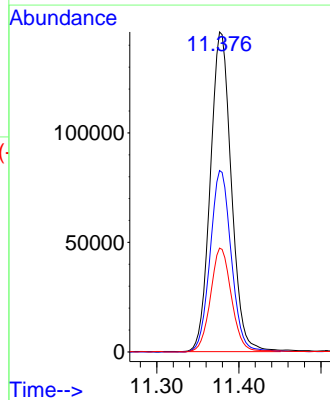
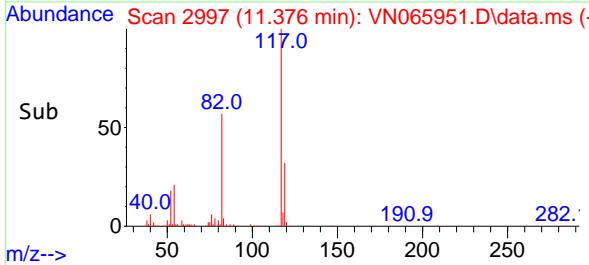
Tgt Ion: 95 Resp: 127837
 Ion Ratio Lower Upper
 95 100
 174 71.6 0.0 169.0
 176 69.0 0.0 162.4

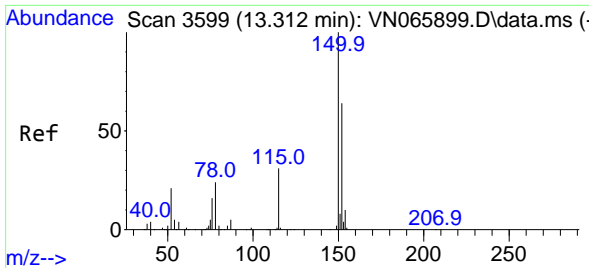


#63
 Chlorobenzene-d5
 Concen: 50.00 ug/l
 RT: 11.376 min Scan# 2997
 Delta R.T. 0.000 min
 Lab File: VN065951.D
 Acq: 22 Feb 2021 11:35



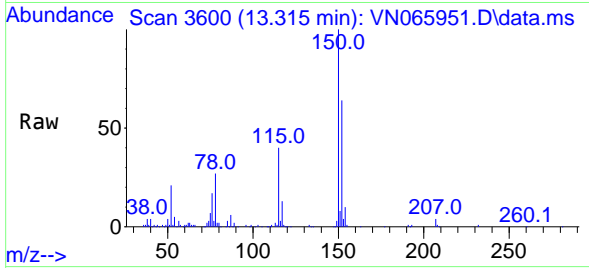
Tgt Ion: 117 Resp: 259796
 Ion Ratio Lower Upper
 117 100
 82 56.7 43.7 65.5
 119 32.4 26.1 39.1



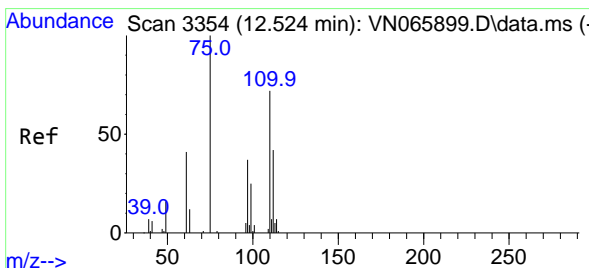
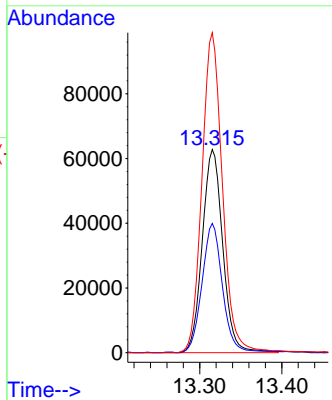
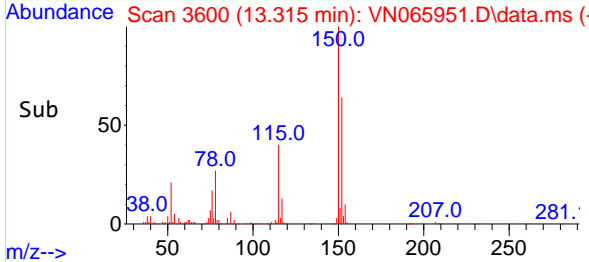


#72
 1,4-Dichlorobenzene-d4
 Concen: 50.00 ug/l
 RT: 13.315 min Scan# 3600
 Delta R.T. 0.003 min
 Lab File: VN065951.D
 Acq: 22 Feb 2021 11:35

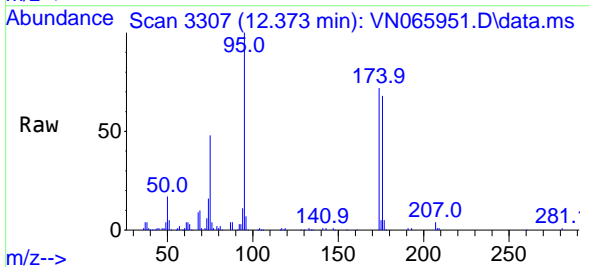
Instrument :
 MSVOA_N
 ClientSampled :
 VN0222WBL01



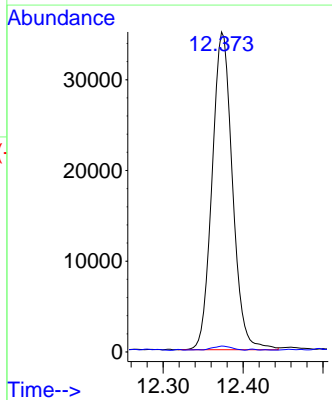
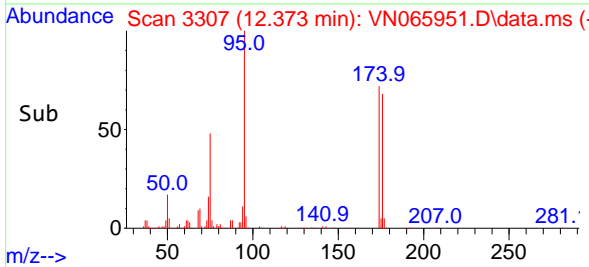
Tgt Ion:152 Resp: 109107
 Ion Ratio Lower Upper
 152 100
 115 63.5 28.5 85.6
 150 156.8 0.0 347.6

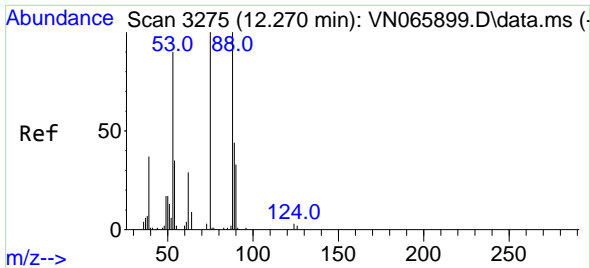


#76
 1,2,3-Trichloropropane
 Concen: 23.61 ug/l
 RT: 12.373 min Scan# 3307
 Delta R.T. -0.151 min
 Lab File: VN065951.D
 Acq: 22 Feb 2021 11:35



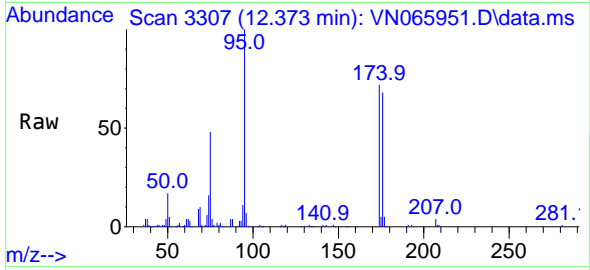
Tgt Ion: 75 Resp: 61896
 Ion Ratio Lower Upper
 75 100
 77 1.2 0.0 0.0#



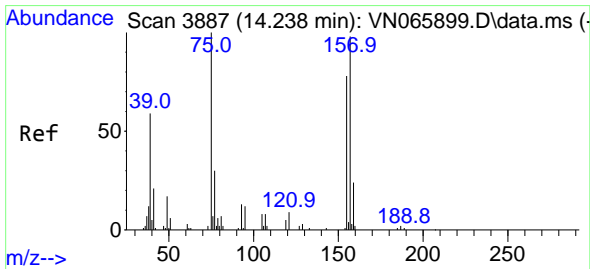
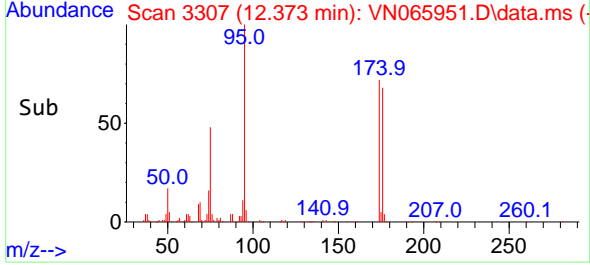
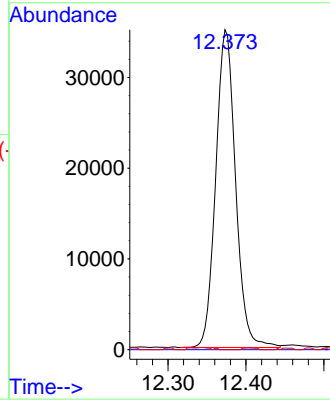


#81
 trans-1,4-Dichloro-2-butene
 Concen: 75.36 ug/l
 RT: 12.373 min Scan# 3307
 Delta R.T. 0.103 min
 Lab File: VN065951.D
 Acq: 22 Feb 2021 11:35

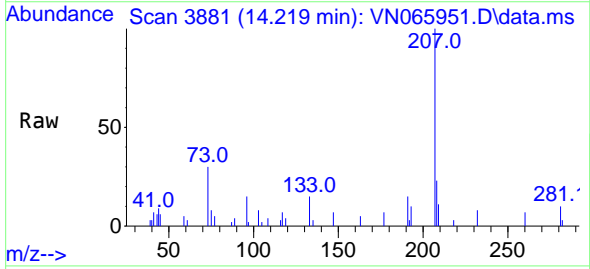
Instrument :
 MSVOA_N
 ClientSampleId :
 VN0222WBL01



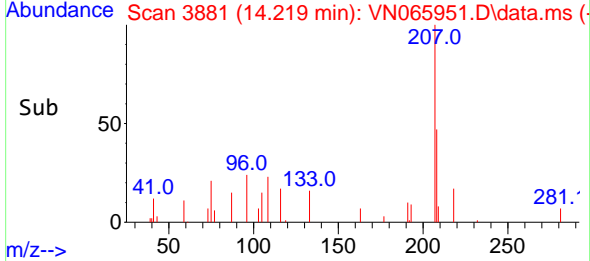
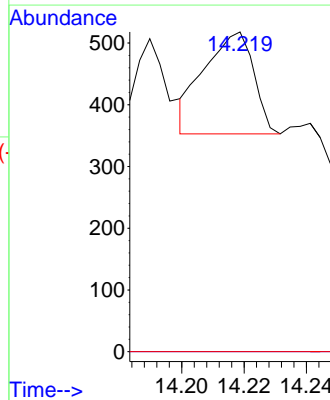
Tgt Ion: 75 Resp: 61982
 Ion Ratio Lower Upper
 75 100
 53 0.0 74.6 111.8#
 89 0.1 35.8 53.8#

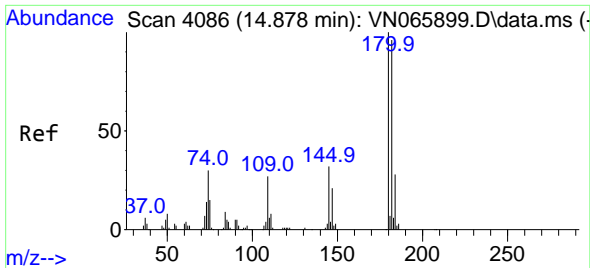


#92
 1,2-Dibromo-3-Chloropropane
 Concen: 1.19 ug/l
 RT: 14.219 min Scan# 3881
 Delta R.T. -0.019 min
 Lab File: VN065951.D
 Acq: 22 Feb 2021 11:35



Tgt Ion: 75 Resp: 182
 Ion Ratio Lower Upper
 75 100
 155 0.0 44.1 132.4#
 157 0.0 56.0 168.2#

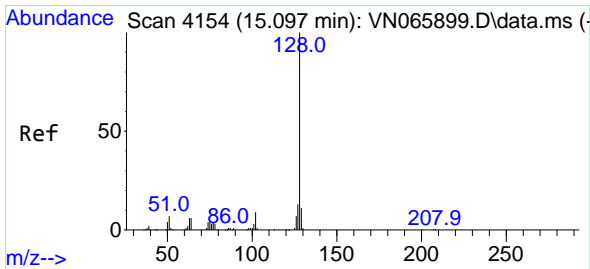
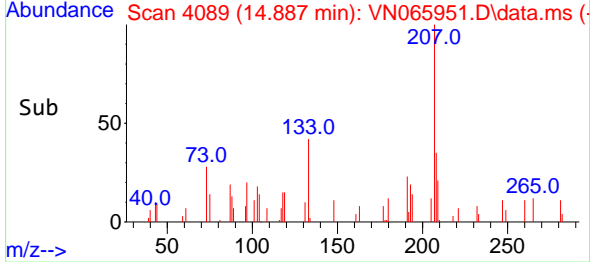
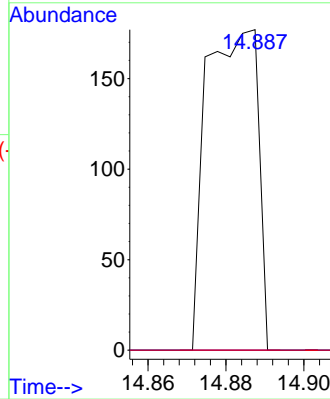
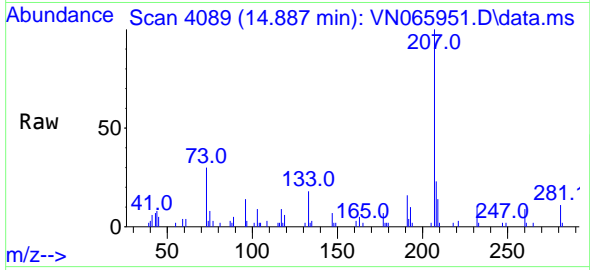




#93
 1,2,4-Trichlorobenzene
 Concen: 2.54 ug/l
 RT: 14.887 min Scan# 4089
 Delta R.T. 0.009 min
 Lab File: VN065951.D
 Acq: 22 Feb 2021 11:35

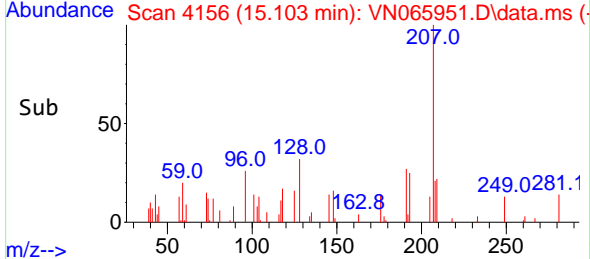
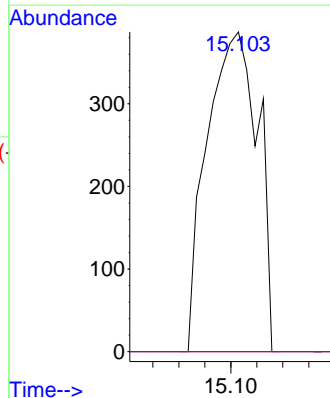
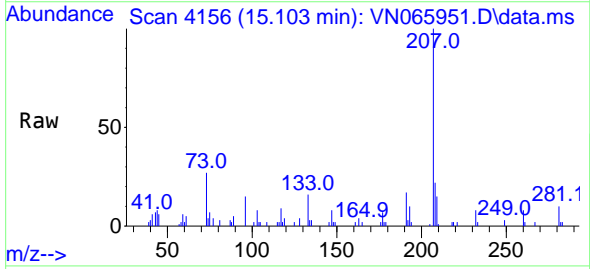
Instrument :
 MSVOA_N
 ClientSampled :
 VN0222WBL01

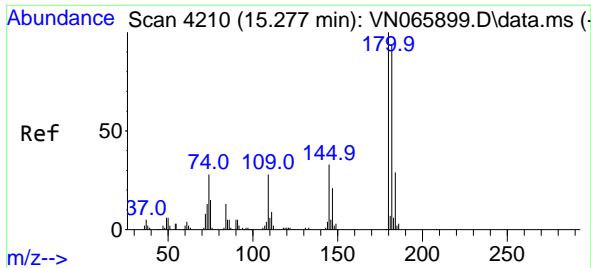
Tgt Ion	Resp	Lower	Upper
180	100		
182	0.0	47.3	142.0#
145	0.0	15.6	46.8#



#95
 Naphthalene
 Concen: 3.13 ug/l
 RT: 15.103 min Scan# 4156
 Delta R.T. 0.006 min
 Lab File: VN065951.D
 Acq: 22 Feb 2021 11:35

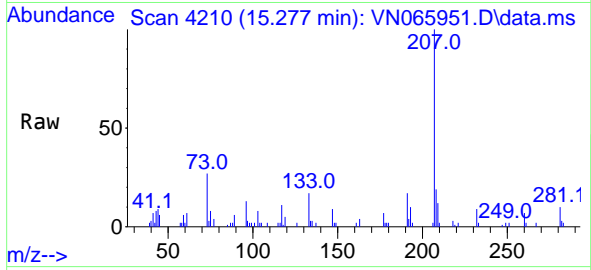
Tgt Ion	Resp	Lower	Upper
128	100		
127	0.0	10.2	15.2#
129	0.0	8.6	13.0#





#96
 1,2,3-Trichlorobenzene
 Concen: 2.28 ug/l
 RT: 15.277 min Scan# 4210
 Delta R.T. -0.000 min
 Lab File: VN065951.D
 Acq: 22 Feb 2021 11:35

Instrument :
 MSVOA_N
 ClientSampled :
 VN0222WBL01



Tgt Ion:180 Resp: 236

Ion	Ratio	Lower	Upper
180	100		
182	0.0	47.4	142.3#
145	25.4	16.5	49.5

