

Data Path : Z:\voasrv\HPCHEM1\MSVOA\_N\Data\VN022323\  
 Data File : VN076791.D  
 Acq On : 23 Feb 2023 14:10  
 Operator : JC\MD  
 Sample : 01664-01  
 Misc : 5.0mL/MSVOA\_N/WATER  
 ALS Vial : 9 Sample Multiplier: 1

Instrument :  
 MSVOA\_N  
 ClientSampleId :  
 MW-10-0222

Quant Time: Feb 24 01:34:58 2023  
 Quant Method : Z:\voasrv\HPCHEM1\MSVOA\_N\methods\82N021323W.M  
 Quant Title : SW846 8260  
 QLast Update : Tue Feb 14 01:44:47 2023  
 Response via : Initial Calibration

Compound	R.T.	QIon	Response	Conc	Units	Dev(Min)
Internal Standards						
1) Pentafluorobenzene	8.230	168	289685	50.000	ug/l	0.00
34) 1,4-Difluorobenzene	9.107	114	519344	50.000	ug/l	0.00
63) Chlorobenzene-d5	11.866	117	473500	50.000	ug/l	0.00
72) 1,4-Dichlorobenzene-d4	13.795	152	218900	50.000	ug/l	0.00
System Monitoring Compounds						
33) 1,2-Dichloroethane-d4	8.583	65	204066	51.015	ug/l	0.00
Spiked Amount	50.000	Range	74 - 125	Recovery	=	102.020%
35) Dibromofluoromethane	8.172	113	154255	45.355	ug/l	0.00
Spiked Amount	50.000	Range	75 - 124	Recovery	=	90.700%
50) Toluene-d8	10.572	98	648755	51.077	ug/l	0.00
Spiked Amount	50.000	Range	86 - 113	Recovery	=	102.160%
62) 4-Bromofluorobenzene	12.848	95	208633	49.594	ug/l	0.00
Spiked Amount	50.000	Range	83 - 123	Recovery	=	99.180%
Target Compounds						
						Qvalue
5) Bromomethane	2.960	94	573	0.239	ug/l #	32
11) Tert butyl alcohol	5.537	59	75486	142.965	ug/l	100
15) Acrylonitrile	5.807	53	18641	9.948	ug/l #	27
16) Acetone	4.448	43	20388	11.410	ug/l #	80
18) Methyl Acetate	5.284	43	24065	4.126	ug/l #	54
19) Methyl tert-butyl Ether	5.807	73	1294734	128.435	ug/l	95
20) Methylene Chloride	5.301	84	1865	0.498	ug/l #	57
22) Diisopropyl ether	6.678	45	2796	0.230	ug/l #	72
25) 2-Butanone	7.501	43	3950	1.499	ug/l #	51
29) Tetrahydrofuran	7.842	42	1485	0.862	ug/l	95
31) Cyclohexane	8.260	56	160091	25.513	ug/l	97
36) 1,1-Dichloropropene	8.225	75	26937	5.482	ug/l #	50
37) Ethyl Acetate	7.501	43	3950	0.764	ug/l #	71
38) Carbon Tetrachloride	8.225	117	30750	6.203	ug/l #	17
39) Methylcyclohexane	9.607	83	94649	16.945	ug/l	96
40) Benzene	8.607	78	8863	0.587	ug/l #	89
41) Methacrylonitrile	7.754	41	1071	0.358	ug/l #	41
42) 1,2-Dichloroethane	8.666	62	2951	0.561	ug/l #	74
43) Isopropyl Acetate	8.719	43	5178	0.615	ug/l #	62
48) Methyl methacrylate	9.607	41	74047	18.548	ug/l #	49
49) 1,4-Dioxane	9.725	88	119	1.723	ug/l #	71
51) 4-Methyl-2-Pentanone	10.448	43	23838	4.453	ug/l	97
52) Toluene	10.636	92	3017	0.331	ug/l	78
55) 1,1,2-Trichloroethane	11.013	97	12851	3.469	ug/l #	21
59) 2-Hexanone	11.060	43	27923	7.235	ug/l	75
67) Ethyl Benzene	11.966	91	113328	6.629	ug/l	95
68) m/p-Xylenes	12.077	106	96356	14.622	ug/l	98
69) o-Xylene	12.401	106	33830	5.264	ug/l	93
70) Styrene	12.407	104	2524	0.243	ug/l #	1
71) Bromoform	12.848	173	1551	0.580	ug/l #	1
73) Isopropylbenzene	12.695	105	18608	1.160	ug/l	98
74) N-amyl acetate	12.460	43	1791	0.248	ug/l #	46
76) 1,2,3-Trichloropropane	12.848	75	117151	26.472	ug/l #	1
78) n-propylbenzene	13.036	91	17483	0.928	ug/l #	53
79) 2-Chlorotoluene	13.136	91	10074	0.873	ug/l #	39
80) 1,3,5-Trimethylbenzene	13.130	105	78964	5.955	ug/l	73

Data Path : Z:\voasrv\HPCHEM1\MSVOA\_N\Data\VN022323\  
 Data File : VN076791.D  
 Acq On : 23 Feb 2023 14:10  
 Operator : JC\MD  
 Sample : 01664-01  
 Misc : 5.0mL/MSVOA\_N/WATER  
 ALS Vial : 9 Sample Multiplier: 1

Instrument :  
 MSVOA\_N  
 ClientSampleId :  
 MW-10-0222

Quant Time: Feb 24 01:34:58 2023  
 Quant Method : Z:\voasrv\HPCHEM1\MSVOA\_N\methods\82N021323W.M  
 Quant Title : SW846 8260  
 QLast Update : Tue Feb 14 01:44:47 2023  
 Response via : Initial Calibration

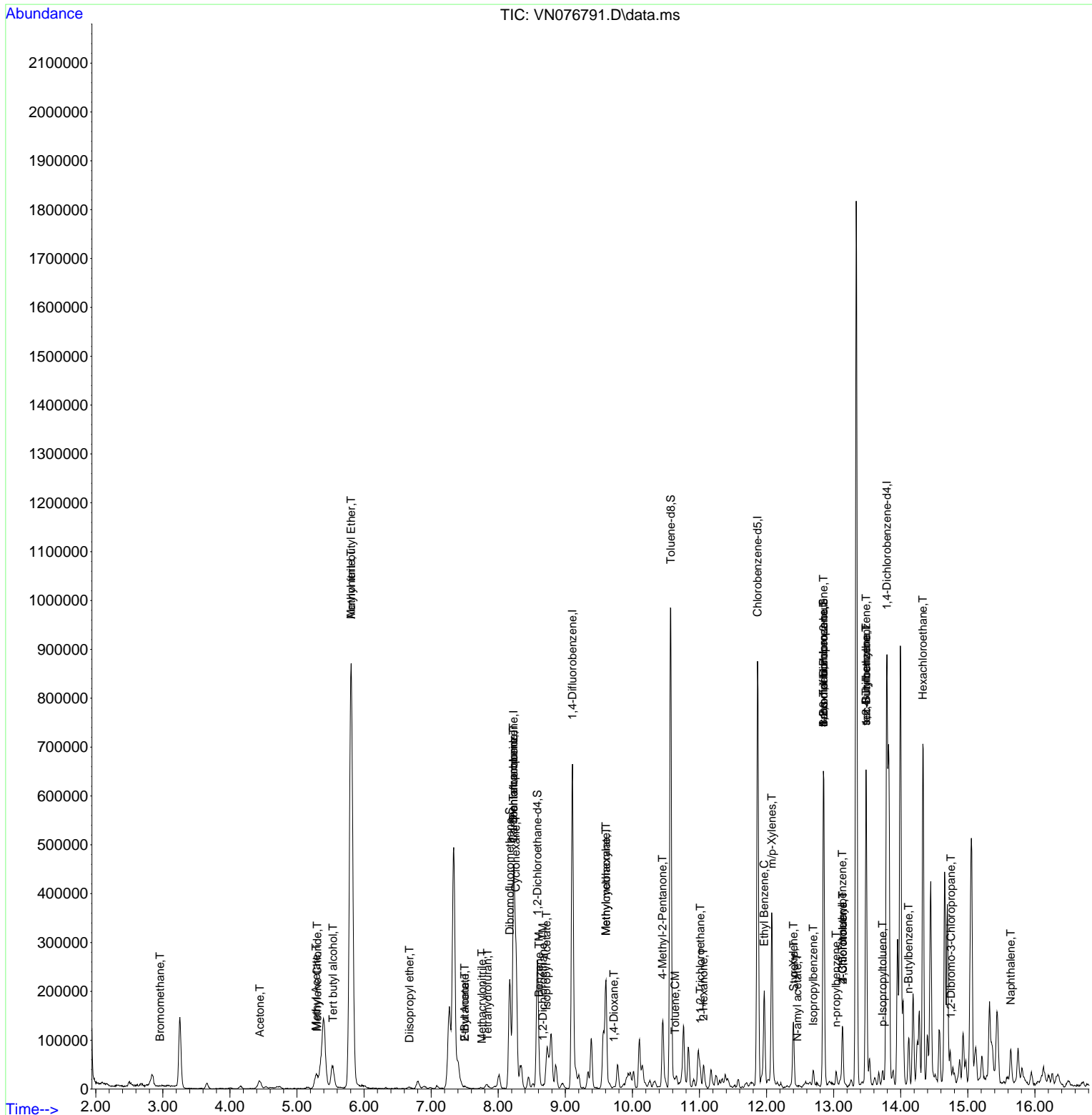
Compound	R.T.	QIon	Response	Conc	Units	Dev(Min)
81) trans-1,4-Dichloro-2-b...	12.848	75	117151	77.100	ug/l #	4
82) 4-Chlorotoluene	13.136	91	10074	0.873	ug/l #	39
83) tert-Butylbenzene	13.483	119	45368	3.782	ug/l #	70
84) 1,2,4-Trimethylbenzene	13.483	105	344375	26.059	ug/l	99
85) sec-Butylbenzene	13.483	105	344012	20.541	ug/l #	55
86) p-Isopropyltoluene	13.730	119	13821	1.033	ug/l	96
89) n-Butylbenzene	14.118	91	10310	0.886	ug/l #	1
90) Hexachloroethane	14.330	117	37017	13.220	ug/l #	14
92) 1,2-Dibromo-3-Chloropr...	14.748	75	296	0.263	ug/l #	1
95) Naphthalene	15.642	128	60956	5.191	ug/l #	93

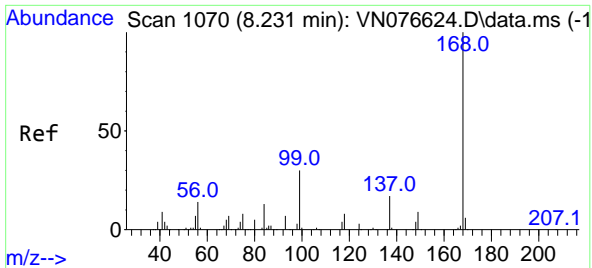
(#) = qualifier out of range (m) = manual integration (+) = signals summed

Data Path : Z:\voasrv\HPCHEM1\MSVOA\_N\Data\VN022323\  
 Data File : VN076791.D  
 Acq On : 23 Feb 2023 14:10  
 Operator : JC\MD  
 Sample : 01664-01  
 Misc : 5.0mL/MSVOA\_N/WATER  
 ALS Vial : 9 Sample Multiplier: 1

Instrument :  
 MSVOA\_N  
 ClientSampleId :  
 MW-10-0222

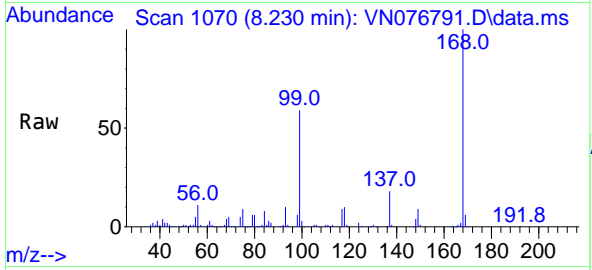
Quant Time: Feb 24 01:34:58 2023  
 Quant Method : Z:\voasrv\HPCHEM1\MSVOA\_N\methods\82N021323W.M  
 Quant Title : SW846 8260  
 QLast Update : Tue Feb 14 01:44:47 2023  
 Response via : Initial Calibration



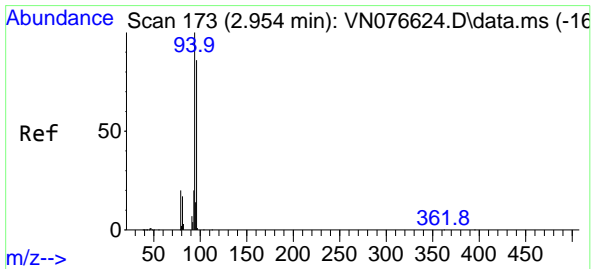
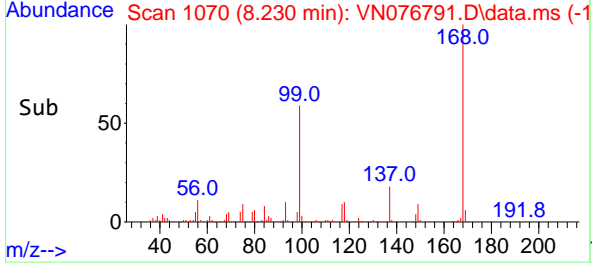
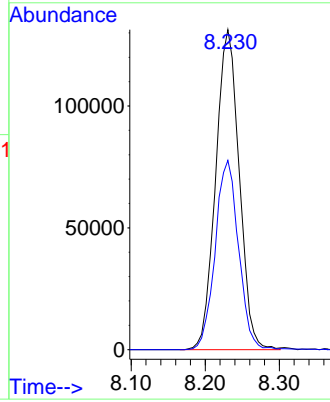


#1  
 Pentafluorobenzene  
 Concen: 50.000 ug/l  
 RT: 8.230 min Scan# 10  
 Delta R.T. -0.001 min  
 Lab File: VN076791.D  
 Acq: 23 Feb 2023 14:10

Instrument : MSVOA\_N  
 ClientSampleId : MW-10-0222

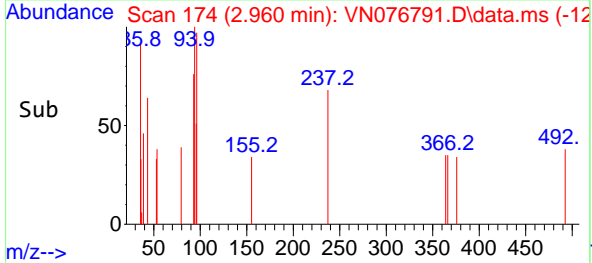
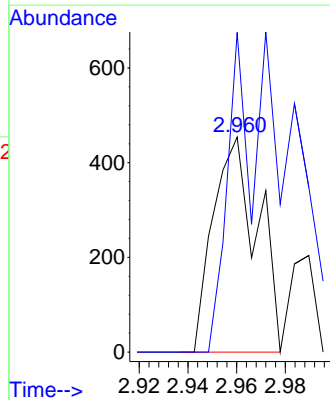
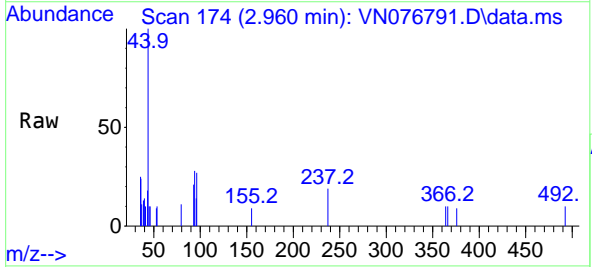


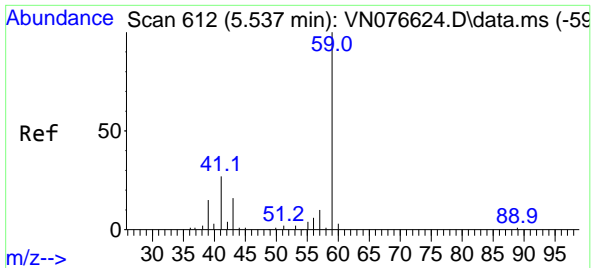
Tgt Ion:168 Resp: 289685  
 Ion Ratio Lower Upper  
 168 100  
 99 59.2 44.8 67.2



#5  
 Bromomethane  
 Concen: 0.239 ug/l  
 RT: 2.960 min Scan# 174  
 Delta R.T. 0.006 min  
 Lab File: VN076791.D  
 Acq: 23 Feb 2023 14:10

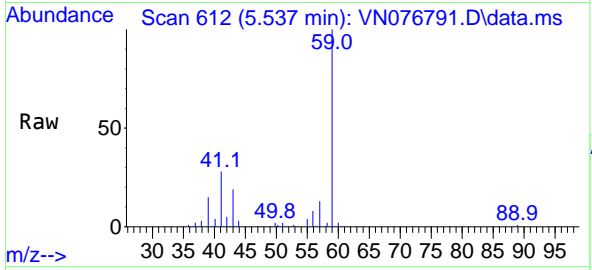
Tgt Ion: 94 Resp: 573  
 Ion Ratio Lower Upper  
 94 100  
 96 148.7 69.0 103.4#



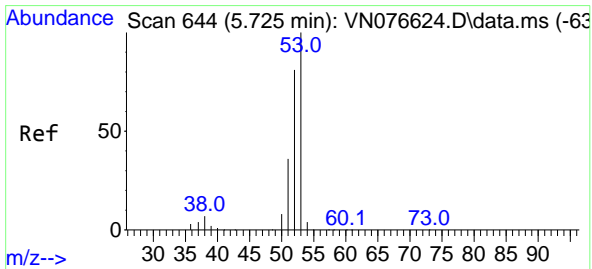
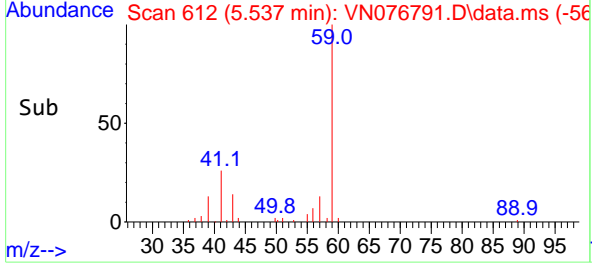
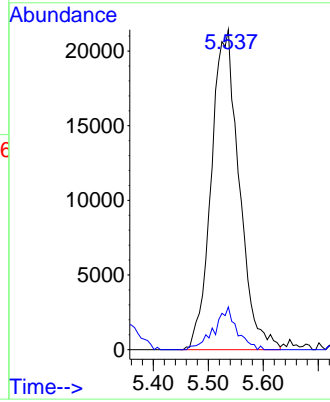


#11  
 Tert butyl alcohol  
 Concen: 142.965 ug/l  
 RT: 5.537 min Scan# 611  
 Delta R.T. -0.000 min  
 Lab File: VN076791.D  
 Acq: 23 Feb 2023 14:10

Instrument : MSVOA\_N  
 ClientSampleId : MW-10-0222

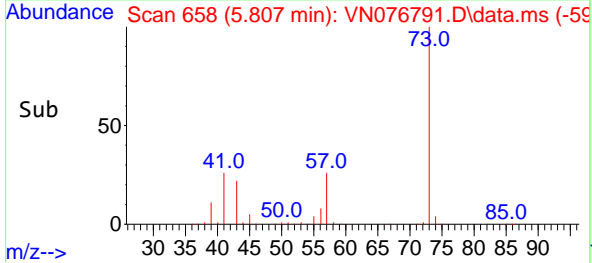
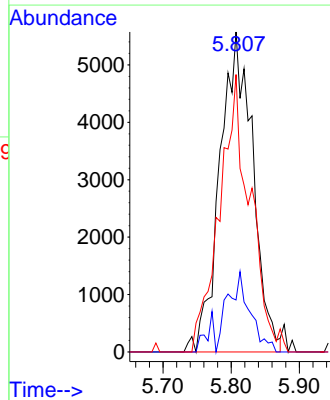
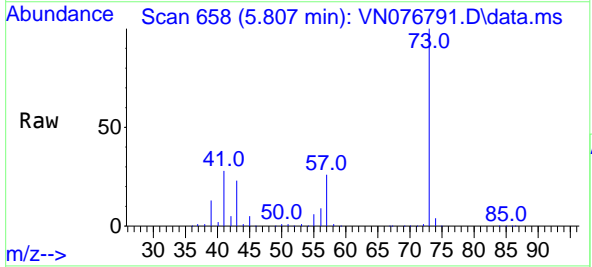


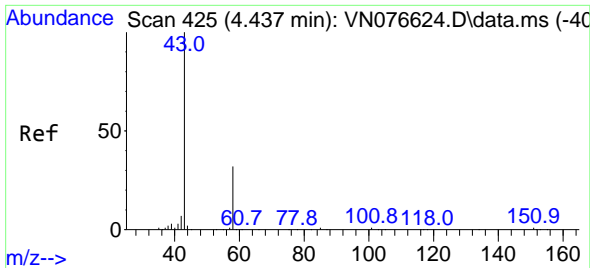
Tgt Ion: 59 Resp: 75486  
 Ion Ratio Lower Upper  
 59 100  
 57 10.9 8.7 13.1



#15  
 Acrylonitrile  
 Concen: 9.948 ug/l  
 RT: 5.807 min Scan# 658  
 Delta R.T. 0.082 min  
 Lab File: VN076791.D  
 Acq: 23 Feb 2023 14:10

Tgt Ion: 53 Resp: 18641  
 Ion Ratio Lower Upper  
 53 100  
 52 17.1 65.3 97.9#  
 51 81.3 29.2 43.8#

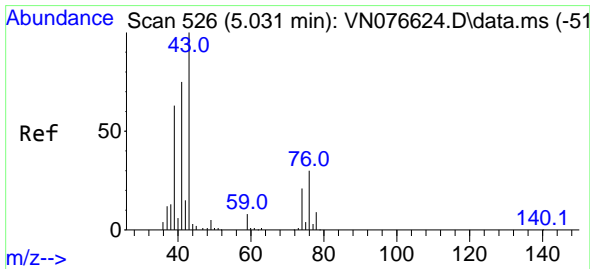
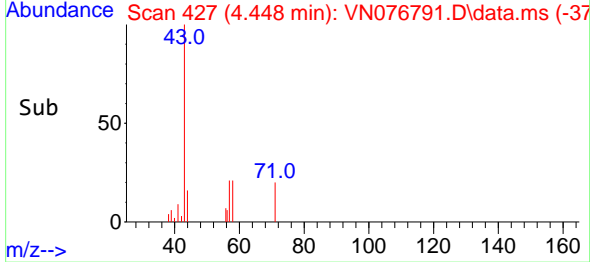
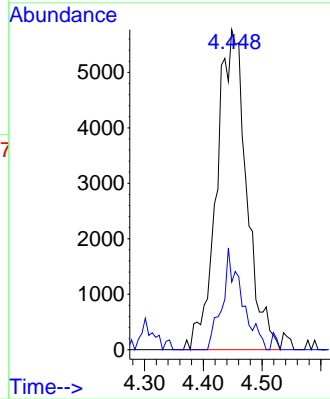
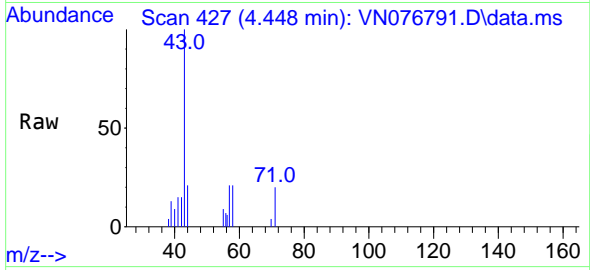




#16  
 Acetone  
 Concen: 11.410 ug/l  
 RT: 4.448 min Scan# 41  
 Delta R.T. 0.011 min  
 Lab File: VN076791.D  
 Acq: 23 Feb 2023 14:10

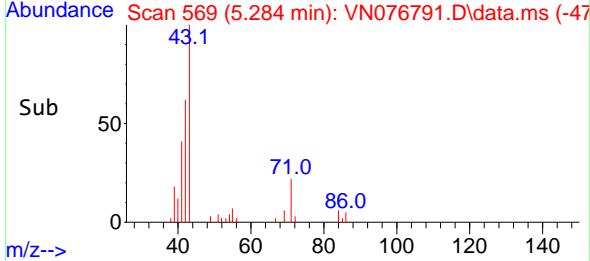
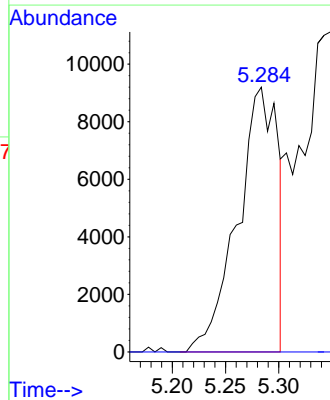
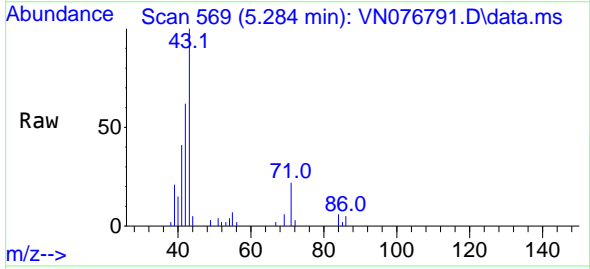
Instrument :  
 MSVOA\_N  
 ClientSampleId :  
 MW-10-0222

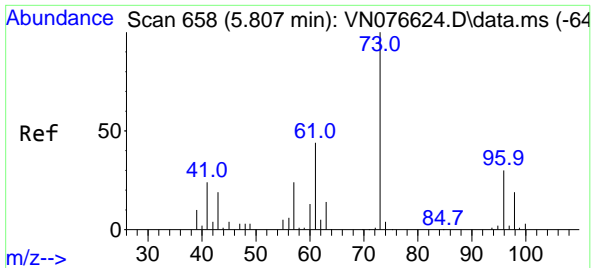
Tgt Ion: 43 Resp: 20388  
 Ion Ratio Lower Upper  
 43 100  
 58 21.2 25.9 38.9#



#18  
 Methyl Acetate  
 Concen: 4.126 ug/l  
 RT: 5.284 min Scan# 569  
 Delta R.T. 0.253 min  
 Lab File: VN076791.D  
 Acq: 23 Feb 2023 14:10

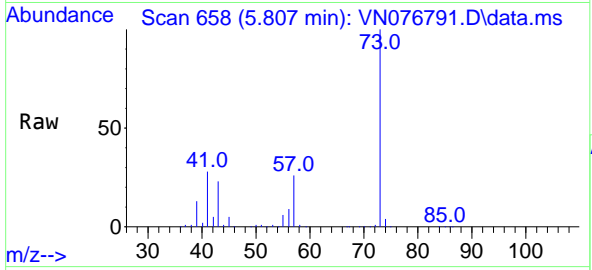
Tgt Ion: 43 Resp: 24065  
 Ion Ratio Lower Upper  
 43 100  
 74 0.0 17.7 26.5#



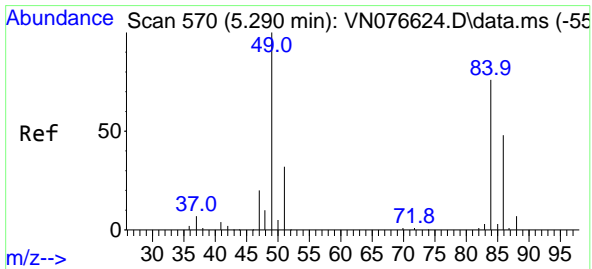
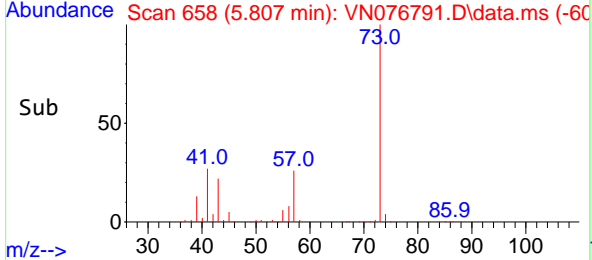
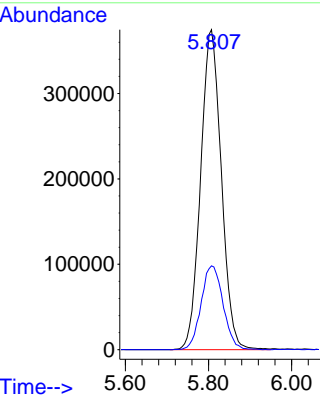


#19  
 Methyl tert-butyl Ether  
 Concen: 128.435 ug/l  
 RT: 5.807 min Scan# 61  
 Delta R.T. 0.000 min  
 Lab File: VN076791.D  
 Acq: 23 Feb 2023 14:10

Instrument : MSVOA\_N  
 ClientSampleId : MW-10-0222

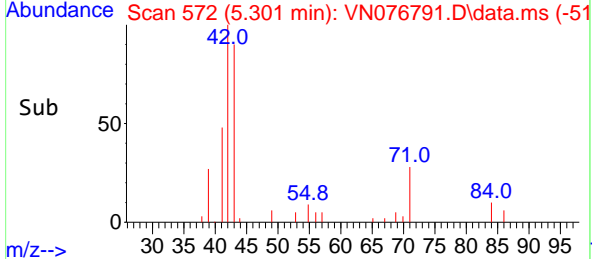
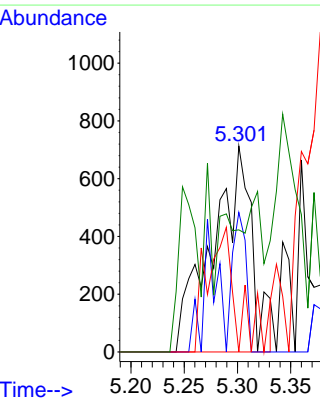
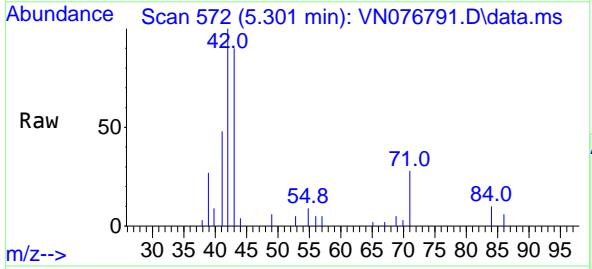


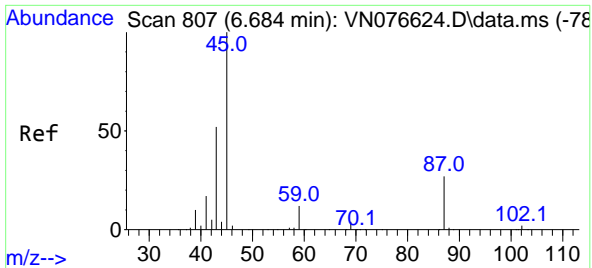
Tgt Ion: 73 Resp: 1294734  
 Ion Ratio Lower Upper  
 73 100  
 57 26.2 19.0 28.4



#20  
 Methylene Chloride  
 Concen: 0.498 ug/l  
 RT: 5.301 min Scan# 572  
 Delta R.T. 0.011 min  
 Lab File: VN076791.D  
 Acq: 23 Feb 2023 14:10

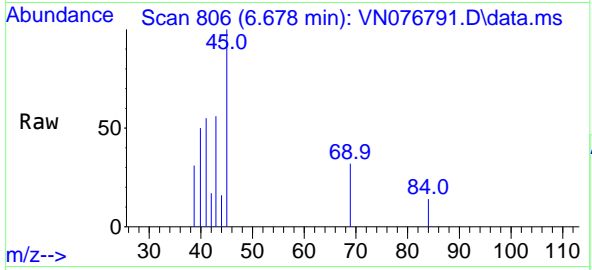
Tgt Ion: 84 Resp: 1865  
 Ion Ratio Lower Upper  
 84 100  
 49 67.7 104.9 157.3#  
 51 0.0 33.8 50.8#  
 86 59.3 50.0 75.0





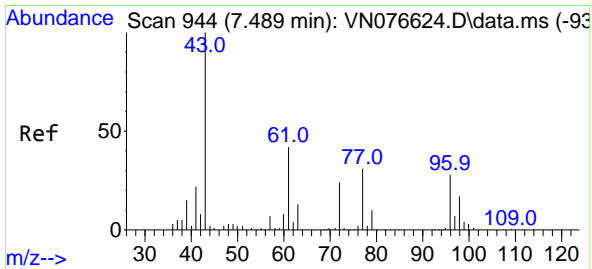
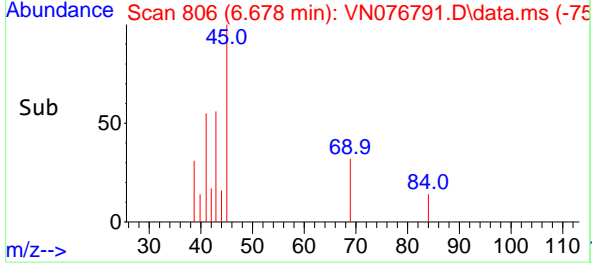
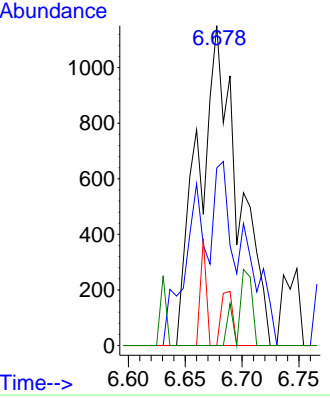
#22  
 Diisopropyl ether  
 Concen: 0.230 ug/l  
 RT: 6.678 min Scan# 806  
 Delta R.T. -0.006 min  
 Lab File: VN076791.D  
 Acq: 23 Feb 2023 14:10

Instrument : MSVOA\_N  
 ClientSampleId : MW-10-0222

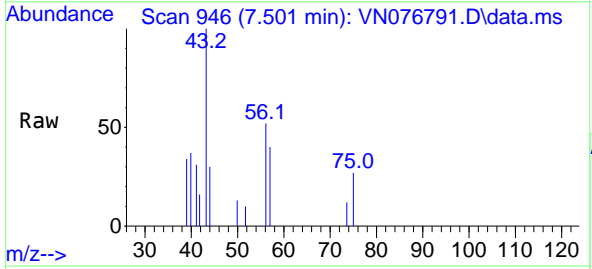


Tgt Ion: 45 Resp: 2796

Ion	Ratio	Lower	Upper
45	100		
43	42.3	41.8	62.6
87	0.0	21.8	32.8#
59	0.0	9.3	13.9#

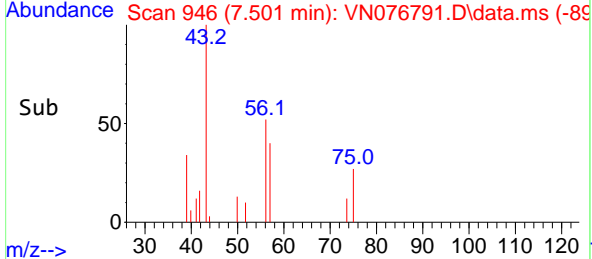
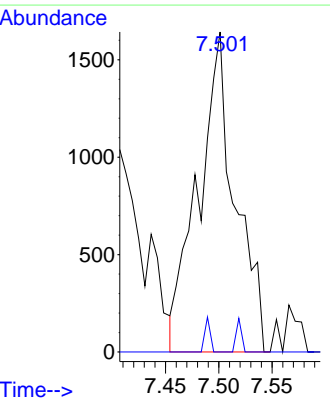


#25  
 2-Butanone  
 Concen: 1.499 ug/l  
 RT: 7.501 min Scan# 946  
 Delta R.T. 0.012 min  
 Lab File: VN076791.D  
 Acq: 23 Feb 2023 14:10

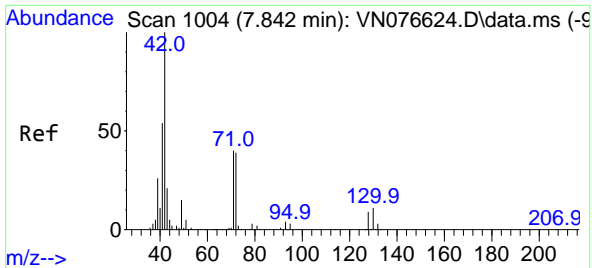


Tgt Ion: 43 Resp: 3950

Ion	Ratio	Lower	Upper
43	100		
72	0.0	19.4	29.2#

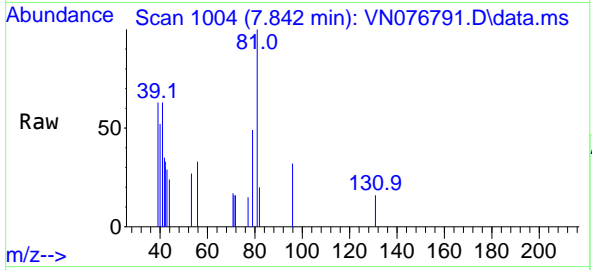






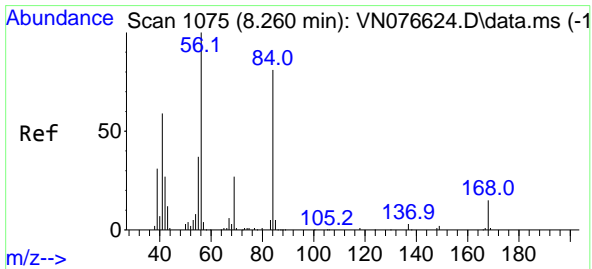
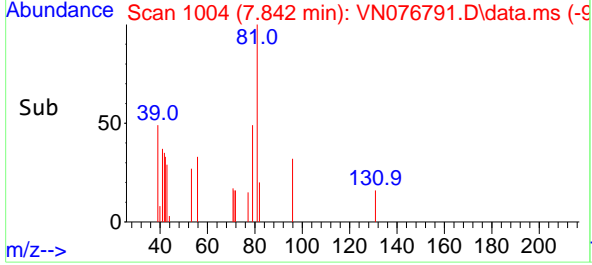
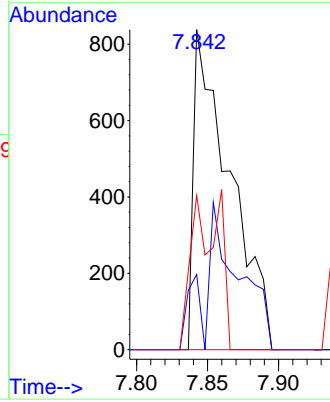
#29  
 Tetrahydrofuran  
 Concen: 0.862 ug/l  
 RT: 7.842 min Scan# 1004  
 Delta R.T. 0.000 min  
 Lab File: VN076791.D  
 Acq: 23 Feb 2023 14:10

Instrument : MSVOA\_N  
 ClientSampleId : MW-10-0222



Tgt Ion: 42 Resp: 1485

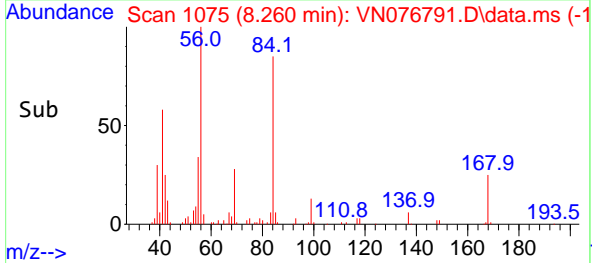
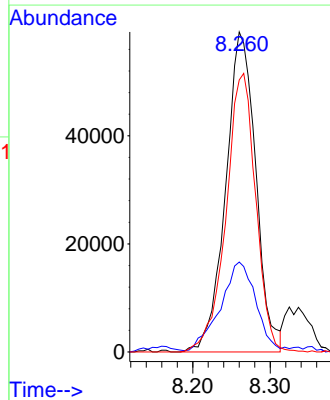
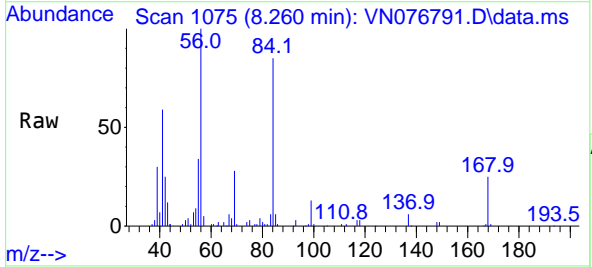
Ion	Ratio	Lower	Upper
42	100		
72	44.8	31.5	47.3
71	36.8	29.8	44.8

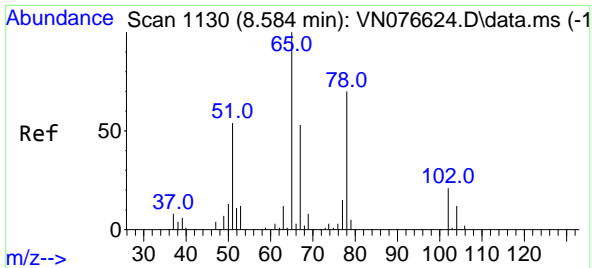


#31  
 Cyclohexane  
 Concen: 25.513 ug/l  
 RT: 8.260 min Scan# 1075  
 Delta R.T. -0.000 min  
 Lab File: VN076791.D  
 Acq: 23 Feb 2023 14:10

Tgt Ion: 56 Resp: 160091

Ion	Ratio	Lower	Upper
56	100		
69	27.5	21.6	32.4
84	85.0	65.1	97.7

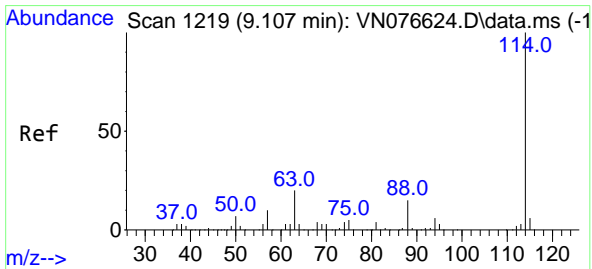
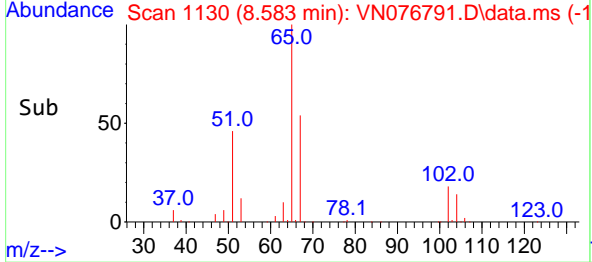
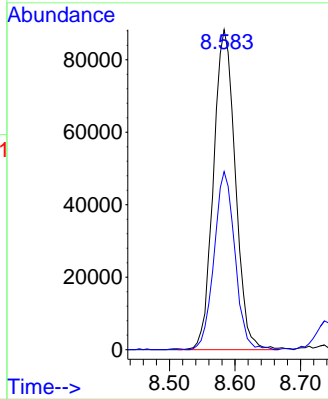
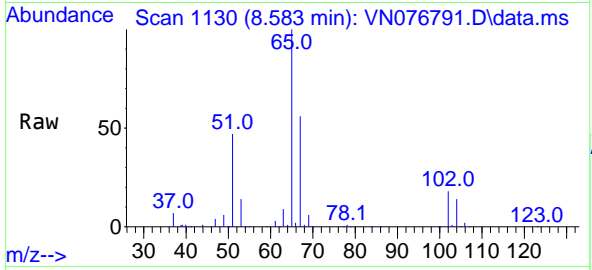




#33  
 1,2-Dichloroethane-d4  
 Concen: 51.015 ug/l  
 RT: 8.583 min Scan# 1130  
 Delta R.T. -0.001 min  
 Lab File: VN076791.D  
 Acq: 23 Feb 2023 14:10

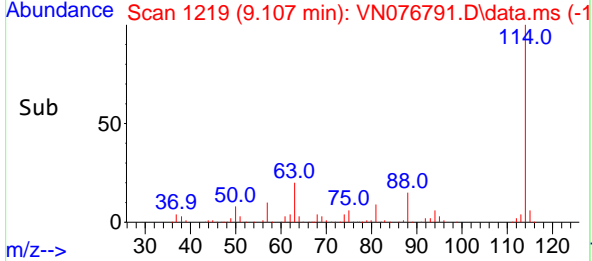
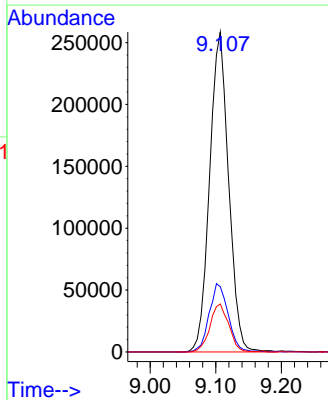
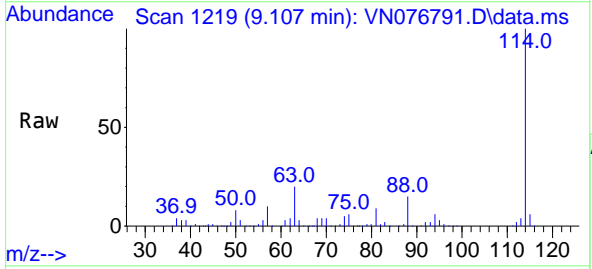
Instrument : MSVOA\_N  
 ClientSampleId : MW-10-0222

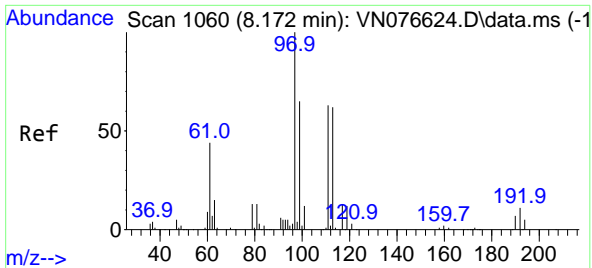
Tgt Ion: 65 Resp: 204066  
 Ion Ratio Lower Upper  
 65 100  
 67 52.9 0.0 105.6



#34  
 1,4-Difluorobenzene  
 Concen: 50.000 ug/l  
 RT: 9.107 min Scan# 1219  
 Delta R.T. -0.000 min  
 Lab File: VN076791.D  
 Acq: 23 Feb 2023 14:10

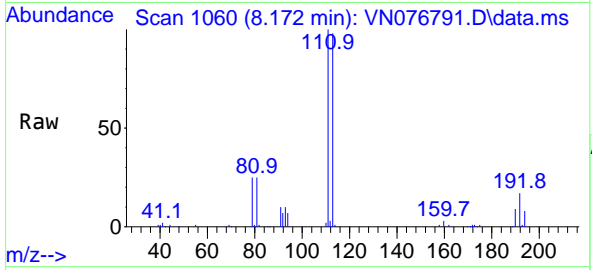
Tgt Ion: 114 Resp: 519344  
 Ion Ratio Lower Upper  
 114 100  
 63 20.4 0.0 40.0  
 88 15.0 0.0 29.6



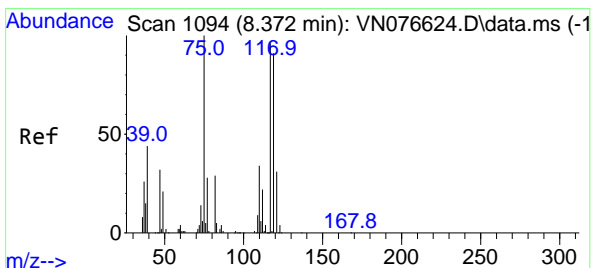
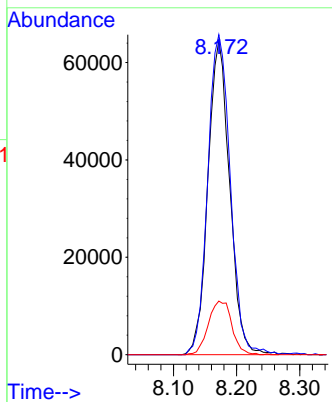
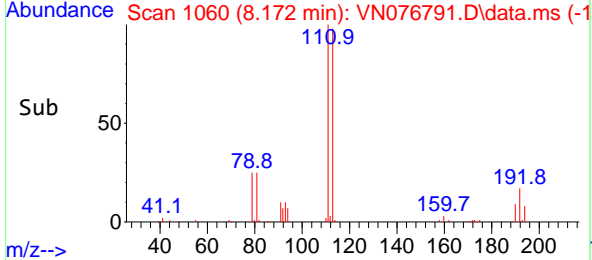


#35  
 Dibromofluoromethane  
 Concen: 45.355 ug/l  
 RT: 8.172 min Scan# 1060  
 Delta R.T. -0.000 min  
 Lab File: VN076791.D  
 Acq: 23 Feb 2023 14:10

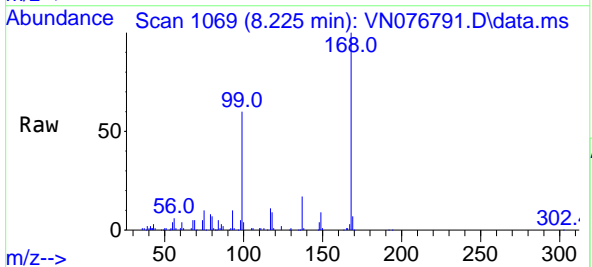
Instrument : MSVOA\_N  
 ClientSampleId : MW-10-0222



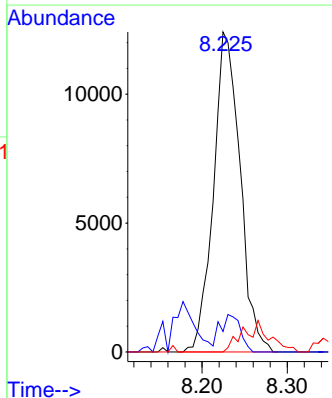
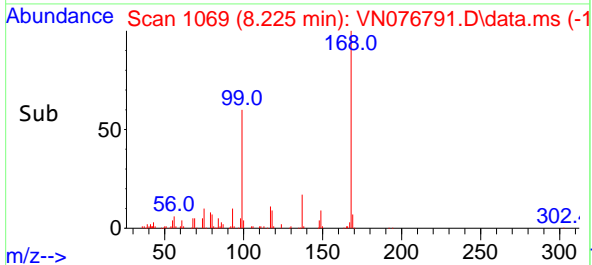
Tgt Ion:113 Resp: 154255  
 Ion Ratio Lower Upper  
 113 100  
 111 105.7 83.1 124.7  
 192 18.4 15.6 23.4

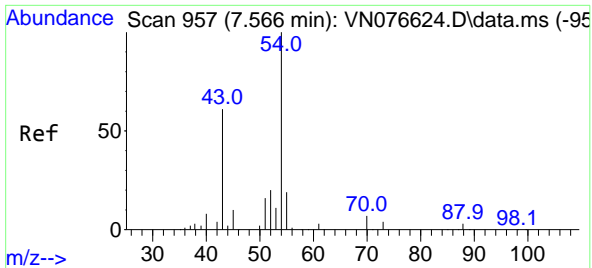


#36  
 1,1-Dichloropropene  
 Concen: 5.482 ug/l  
 RT: 8.225 min Scan# 1069  
 Delta R.T. -0.147 min  
 Lab File: VN076791.D  
 Acq: 23 Feb 2023 14:10



Tgt Ion: 75 Resp: 26937  
 Ion Ratio Lower Upper  
 75 100  
 110 8.8 17.5 52.5#  
 77 0.0 24.5 36.7#



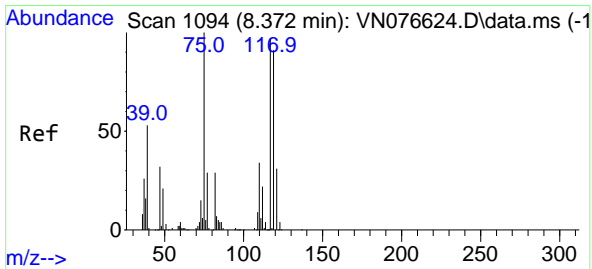
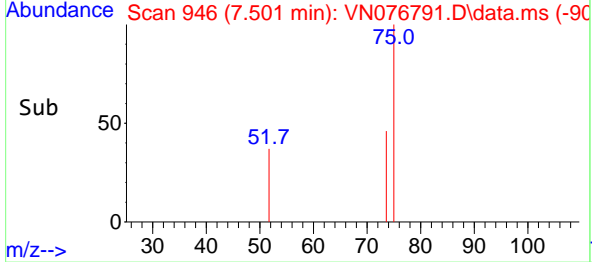
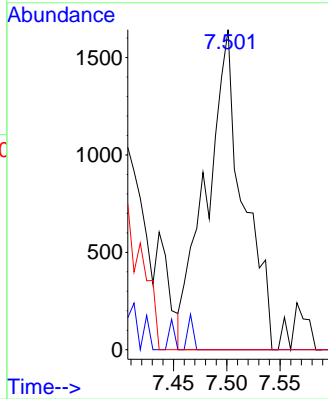
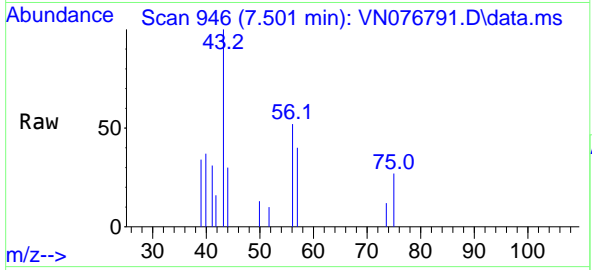


#37  
 Ethyl Acetate  
 Concen: 0.764 ug/l  
 RT: 7.501 min Scan# 946  
 Delta R.T. -0.065 min  
 Lab File: VN076791.D  
 Acq: 23 Feb 2023 14:10

Instrument : MSVOA\_N  
 ClientSampleId : MW-10-0222

Tgt Ion: 43 Resp: 3950

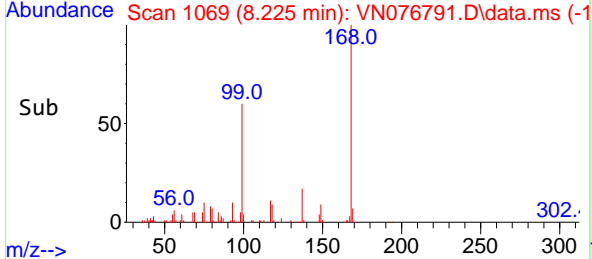
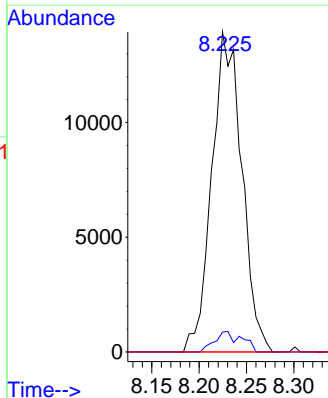
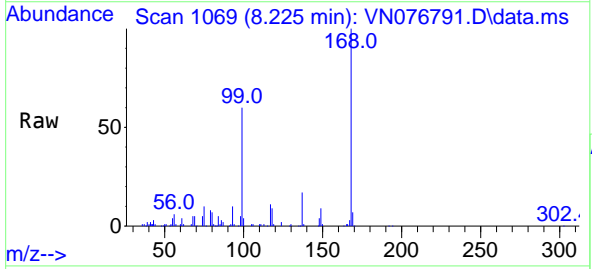
Ion	Ratio	Lower	Upper
43	100		
61	0.0	9.9	14.9#
70	0.0	7.8	11.6#

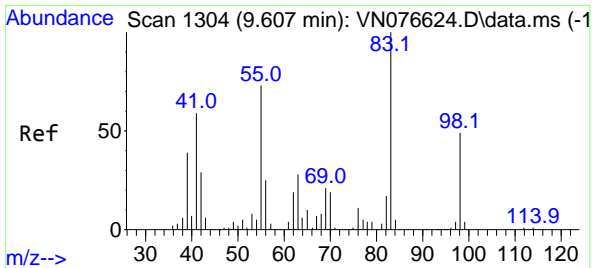


#38  
 Carbon Tetrachloride  
 Concen: 6.203 ug/l  
 RT: 8.225 min Scan# 1069  
 Delta R.T. -0.147 min  
 Lab File: VN076791.D  
 Acq: 23 Feb 2023 14:10

Tgt Ion: 117 Resp: 30750

Ion	Ratio	Lower	Upper
117	100		
119	6.2	75.4	113.0#
121	0.0	26.0	39.0#





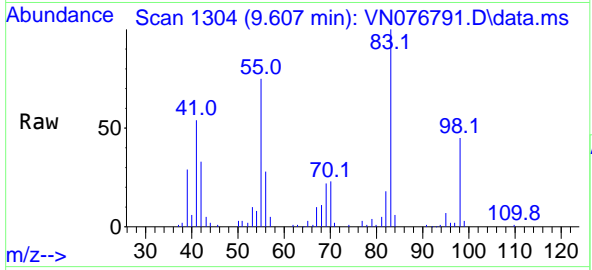
#39  
 Methylcyclohexane  
 Concen: 16.945 ug/l  
 RT: 9.607 min Scan# 1134  
 Delta R.T. -0.000 min  
 Lab File: VN076791.D  
 Acq: 23 Feb 2023 14:10

Instrument :

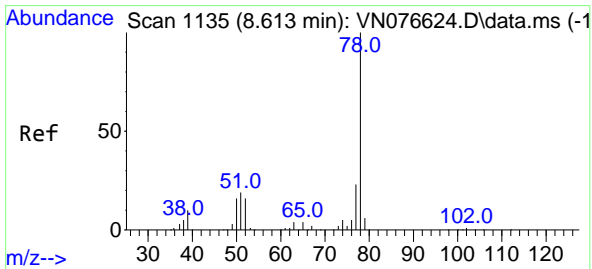
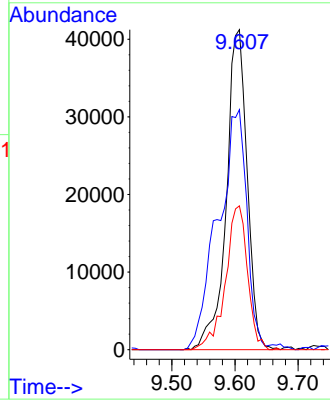
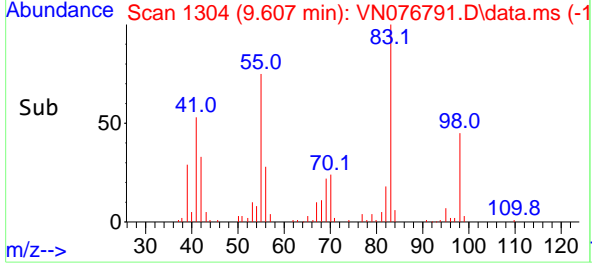
MSVOA\_N

ClientSampleId :

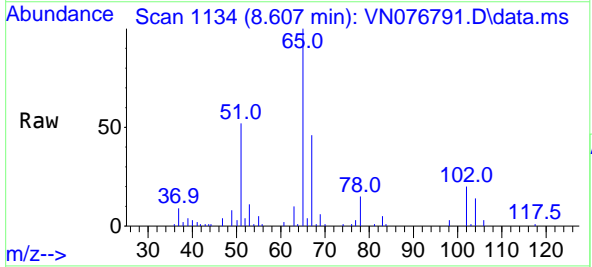
MW-10-0222



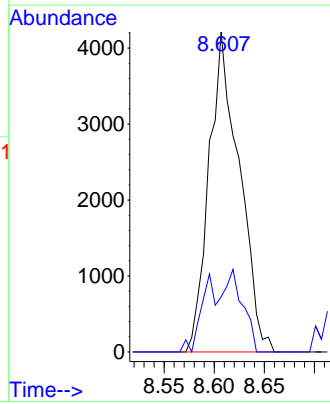
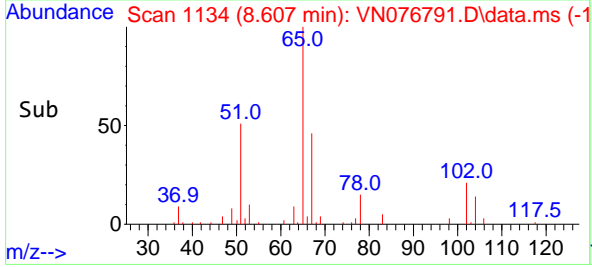
Tgt Ion: 83 Resp: 94649  
 Ion Ratio Lower Upper  
 83 100  
 55 75.0 58.6 88.0  
 98 45.0 39.4 59.2

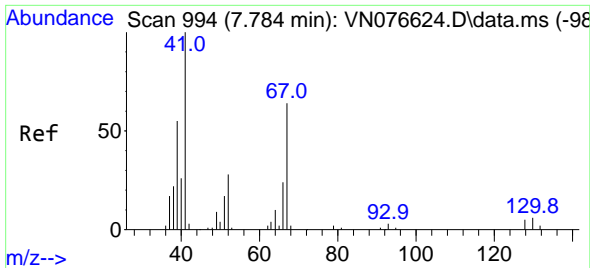


#40  
 Benzene  
 Concen: 0.587 ug/l  
 RT: 8.607 min Scan# 1134  
 Delta R.T. -0.006 min  
 Lab File: VN076791.D  
 Acq: 23 Feb 2023 14:10



Tgt Ion: 78 Resp: 8863  
 Ion Ratio Lower Upper  
 78 100  
 77 17.3 18.2 27.4#



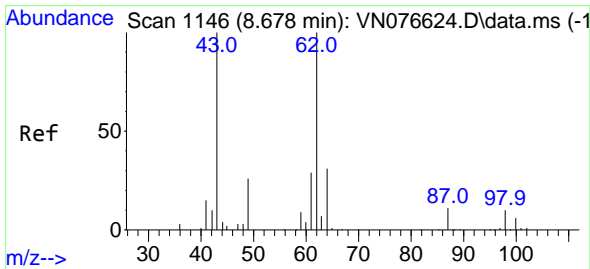
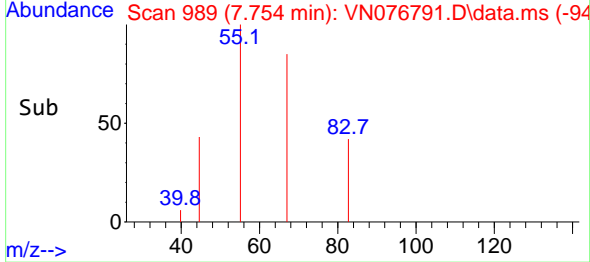
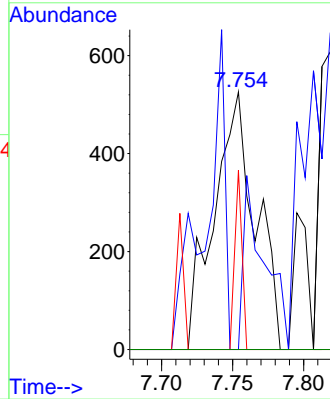
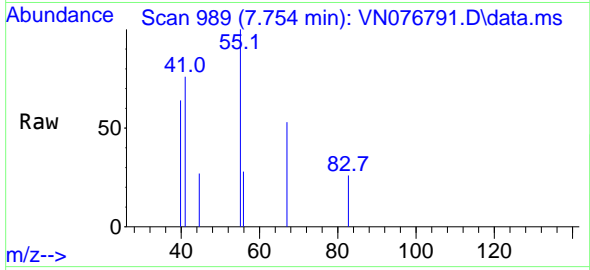


#41  
 Methacrylonitrile  
 Concen: 0.358 ug/l  
 RT: 7.754 min Scan# 91  
 Delta R.T. -0.030 min  
 Lab File: VN076791.D  
 Acq: 23 Feb 2023 14:10

Instrument : MSVOA\_N  
 ClientSampleId : MW-10-0222

Tgt Ion: 41 Resp: 1071

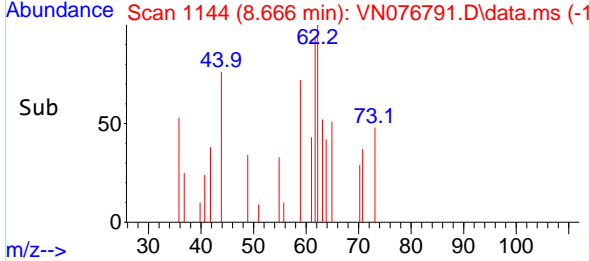
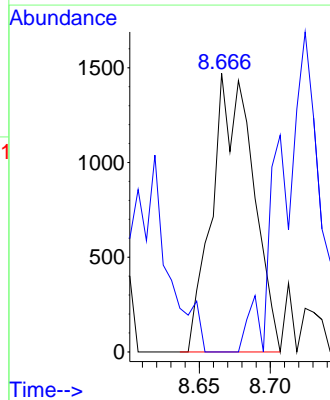
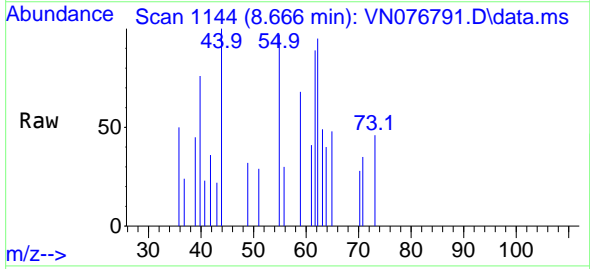
Ion	Ratio	Lower	Upper
41	100		
39	29.2	42.6	63.8#
67	0.0	51.4	77.0#
52	0.0	22.5	33.7#

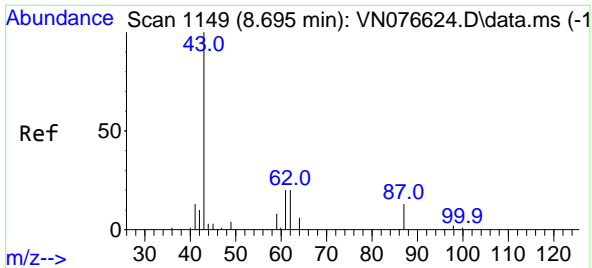


#42  
 1,2-Dichloroethane  
 Concen: 0.561 ug/l  
 RT: 8.666 min Scan# 1144  
 Delta R.T. -0.012 min  
 Lab File: VN076791.D  
 Acq: 23 Feb 2023 14:10

Tgt Ion: 62 Resp: 2951

Ion	Ratio	Lower	Upper
62	100		
98	0.0	0.0	19.2



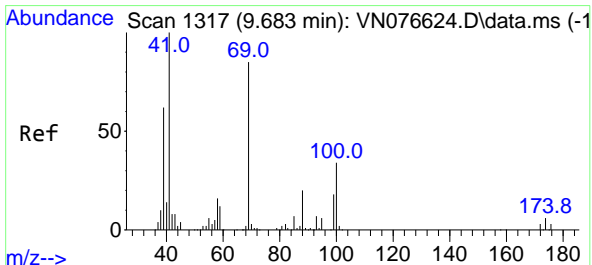
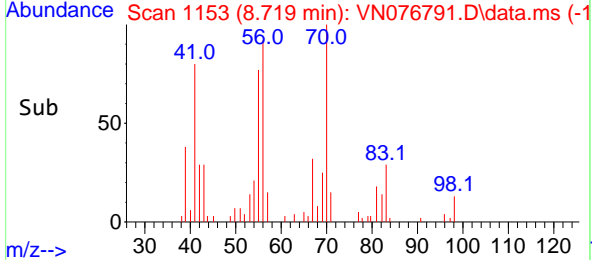
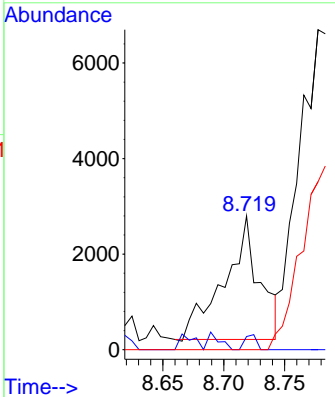
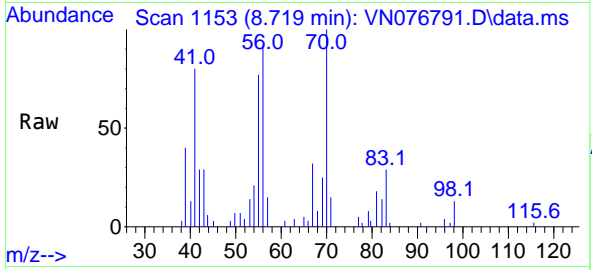


#43  
 Isopropyl Acetate  
 Concen: 0.615 ug/l  
 RT: 8.719 min Scan# 1149  
 Delta R.T. 0.024 min  
 Lab File: VN076791.D  
 Acq: 23 Feb 2023 14:10

Instrument : MSVOA\_N  
 ClientSampleId : MW-10-0222

Tgt Ion: 43 Resp: 5178

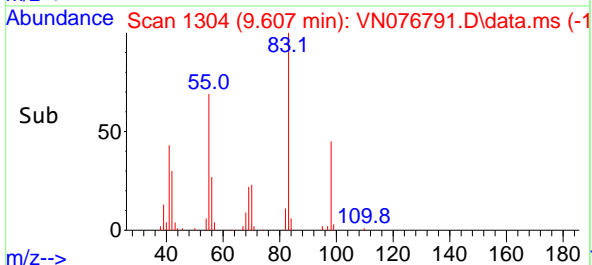
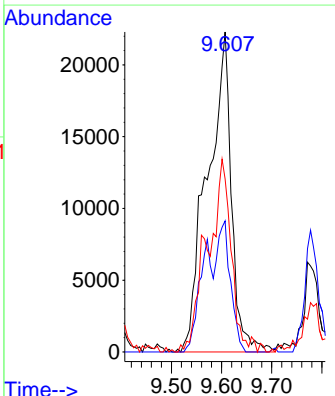
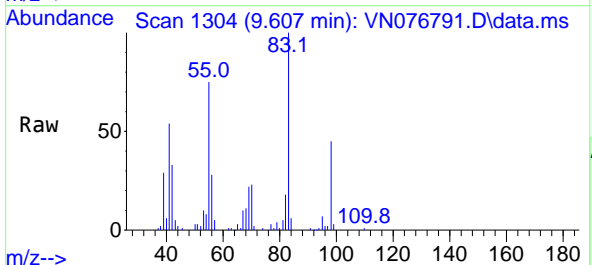
Ion	Ratio	Lower	Upper
43	100		
61	4.0	20.0	30.0#
87	0.0	9.9	14.9#

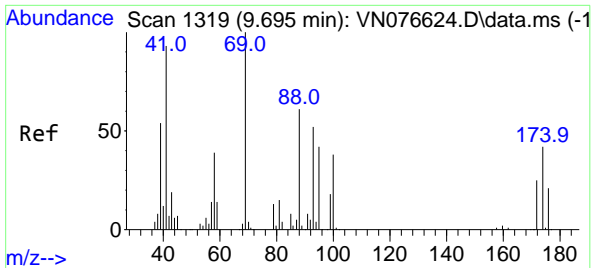


#48  
 Methyl methacrylate  
 Concen: 18.548 ug/l  
 RT: 9.607 min Scan# 1304  
 Delta R.T. -0.076 min  
 Lab File: VN076791.D  
 Acq: 23 Feb 2023 14:10

Tgt Ion: 41 Resp: 74047

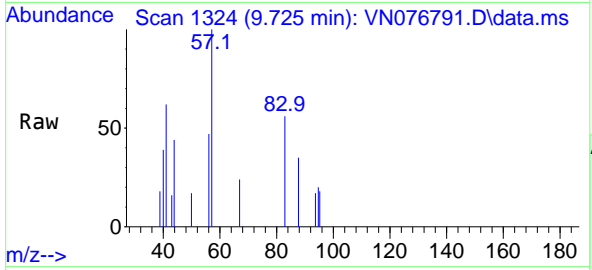
Ion	Ratio	Lower	Upper
41	100		
69	23.4	65.4	98.0#
39	37.2	49.3	73.9#





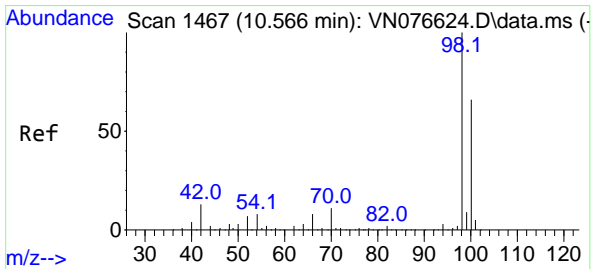
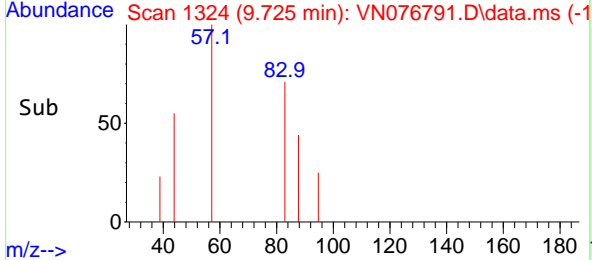
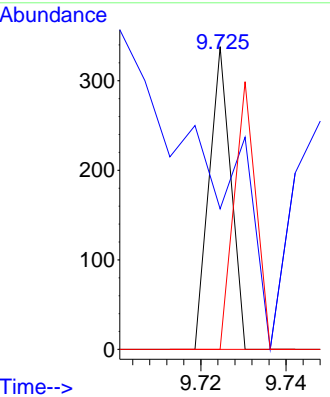
#49  
 1,4-Dioxane  
 Concen: 1.723 ug/l  
 RT: 9.725 min Scan# 11  
 Delta R.T. 0.030 min  
 Lab File: VN076791.D  
 Acq: 23 Feb 2023 14:10

Instrument : MSVOA\_N  
 ClientSampleId : MW-10-0222



Tgt Ion: 88 Resp: 119

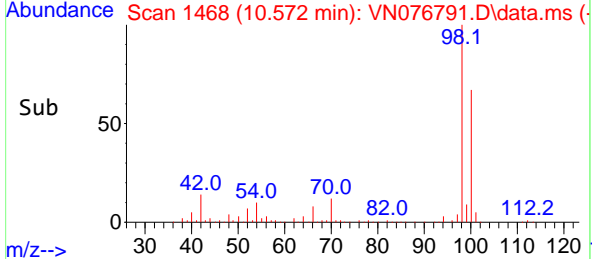
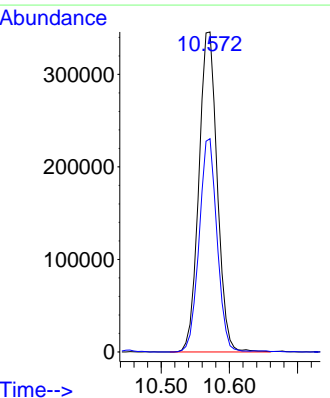
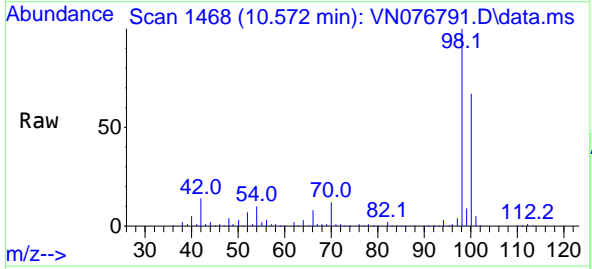
Ion	Ratio	Lower	Upper
88	100		
43	0.0	22.6	33.8#
58	88.2	57.6	86.4#



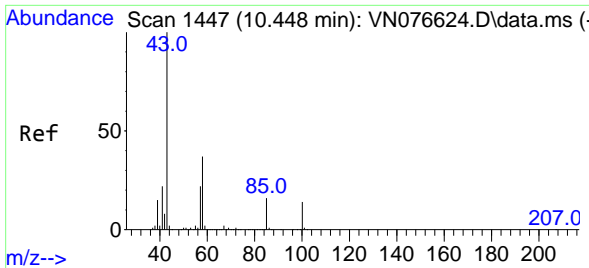
#50  
 Toluene-d8  
 Concen: 51.077 ug/l  
 RT: 10.572 min Scan# 1468  
 Delta R.T. 0.005 min  
 Lab File: VN076791.D  
 Acq: 23 Feb 2023 14:10

Tgt Ion: 98 Resp: 648755

Ion	Ratio	Lower	Upper
98	100		
100	64.8	52.9	79.3

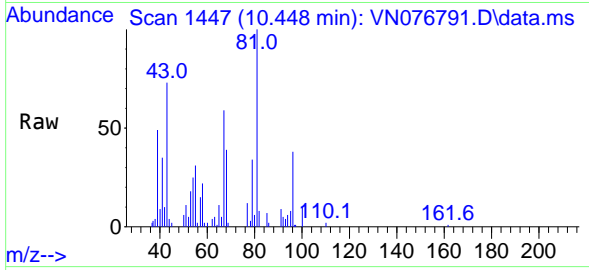




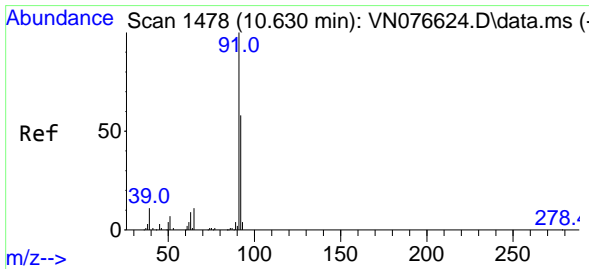
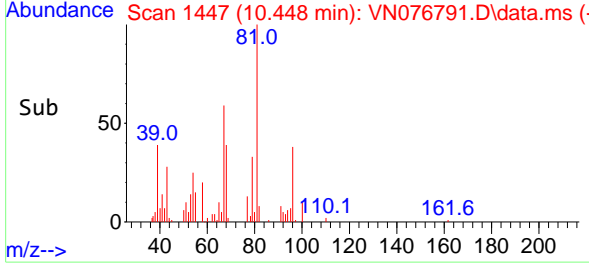
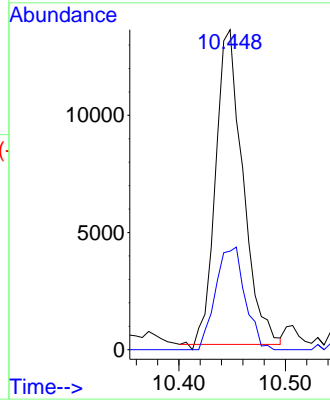


#51  
 4-Methyl-2-Pentanone  
 Concen: 4.453 ug/l  
 RT: 10.448 min Scan# 1447  
 Delta R.T. -0.000 min  
 Lab File: VN076791.D  
 Acq: 23 Feb 2023 14:10

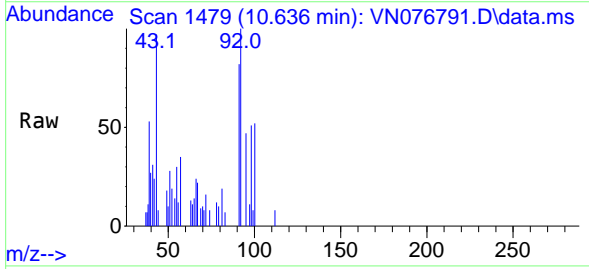
Instrument : MSVOA\_N  
 ClientSampleId : MW-10-0222



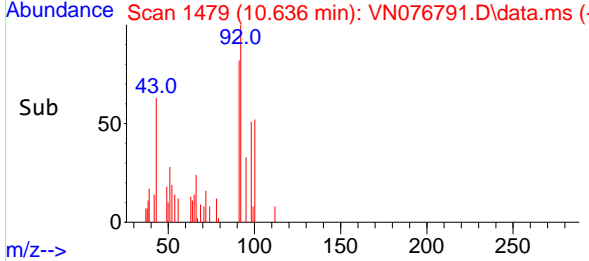
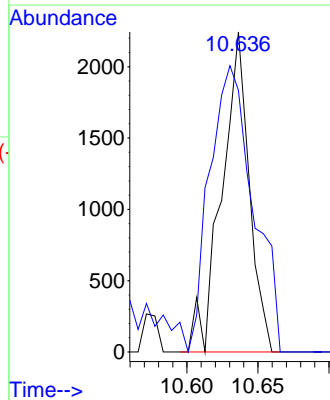
Tgt Ion: 43 Resp: 23838  
 Ion Ratio Lower Upper  
 43 100  
 58 35.2 29.5 44.3

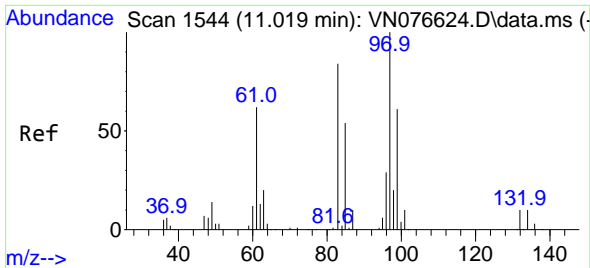


#52  
 Toluene  
 Concen: 0.331 ug/l  
 RT: 10.636 min Scan# 1479  
 Delta R.T. 0.006 min  
 Lab File: VN076791.D  
 Acq: 23 Feb 2023 14:10



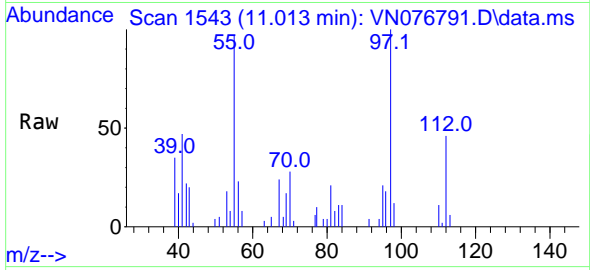
Tgt Ion: 92 Resp: 3017  
 Ion Ratio Lower Upper  
 92 100  
 91 141.9 138.0 207.0





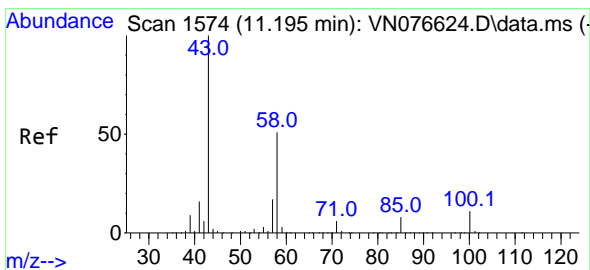
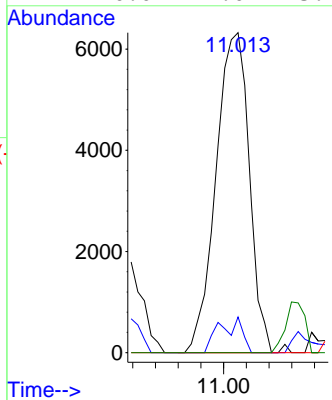
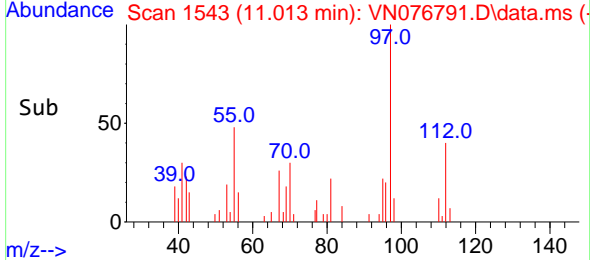
#55  
 1,1,2-Trichloroethane  
 Concen: 3.469 ug/l  
 RT: 11.013 min Scan# 11  
 Delta R.T. -0.006 min  
 Lab File: VN076791.D  
 Acq: 23 Feb 2023 14:10

Instrument : MSVOA\_N  
 ClientSampleId : MW-10-0222

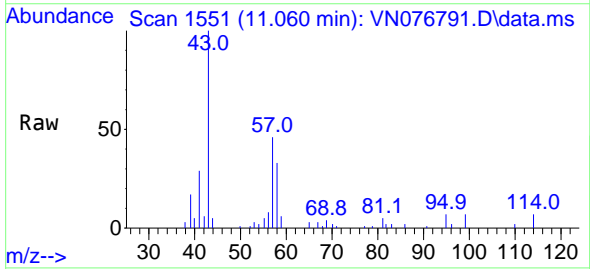


Tgt Ion: 97 Resp: 12851

Ion	Ratio	Lower	Upper
97	100		
83	11.2	67.3	100.9#
85	0.0	43.2	64.8#
99	0.0	49.0	73.4#

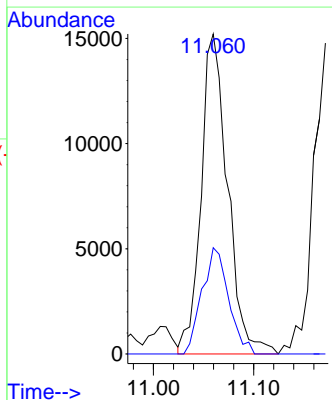
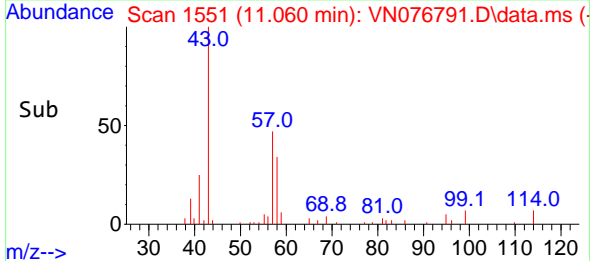


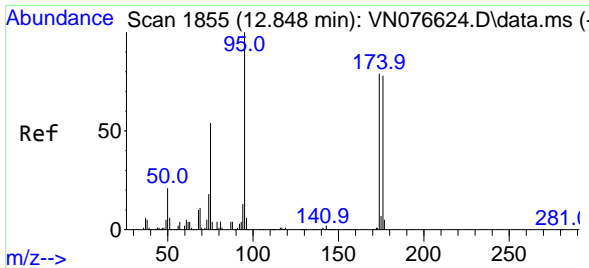
#59  
 2-Hexanone  
 Concen: 7.235 ug/l  
 RT: 11.060 min Scan# 1551  
 Delta R.T. -0.135 min  
 Lab File: VN076791.D  
 Acq: 23 Feb 2023 14:10



Tgt Ion: 43 Resp: 27923

Ion	Ratio	Lower	Upper
43	100		
58	33.3	25.4	76.0



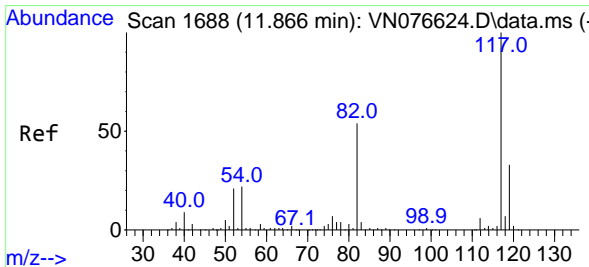
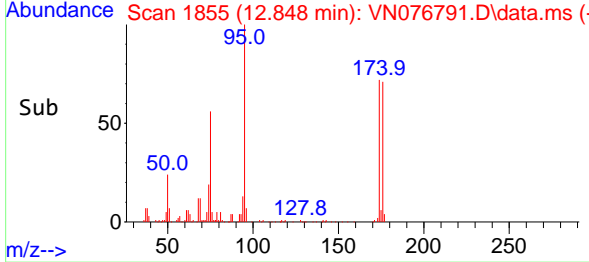
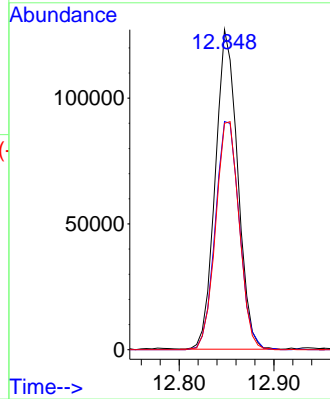
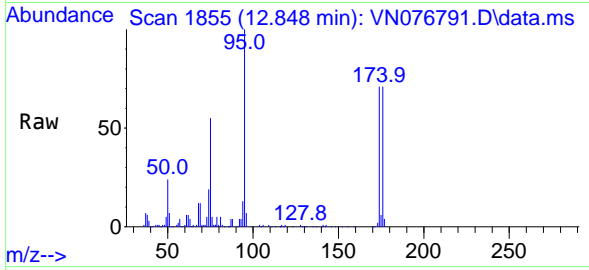


#62  
 4-Bromofluorobenzene  
 Concen: 49.594 ug/l  
 RT: 12.848 min Scan# 1855  
 Delta R.T. -0.000 min  
 Lab File: VN076791.D  
 Acq: 23 Feb 2023 14:10

Instrument : MSVOA\_N  
 ClientSampleId : MW-10-0222

Tgt Ion: 95 Resp: 208633

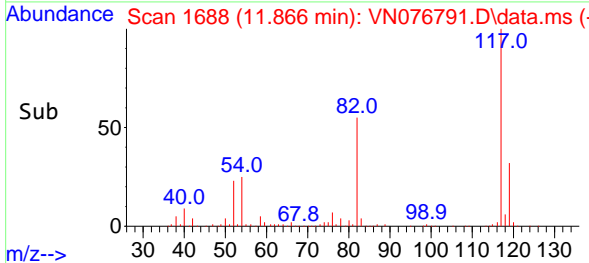
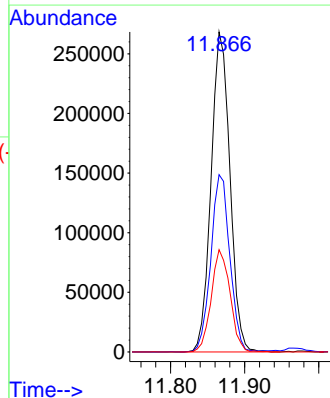
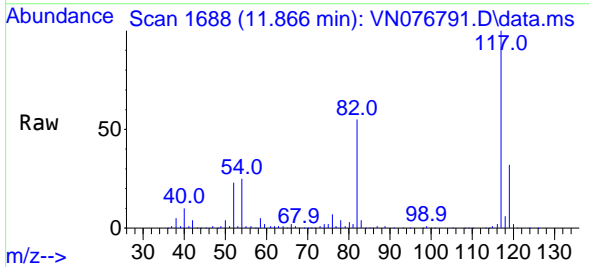
Ion	Ratio	Lower	Upper
95	100		
174	76.6	0.0	169.2
176	75.0	0.0	163.4

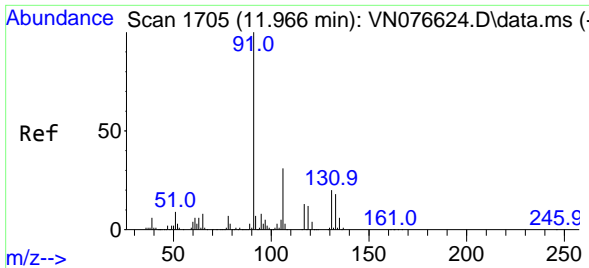


#63  
 Chlorobenzene-d5  
 Concen: 50.000 ug/l  
 RT: 11.866 min Scan# 1688  
 Delta R.T. -0.000 min  
 Lab File: VN076791.D  
 Acq: 23 Feb 2023 14:10

Tgt Ion: 117 Resp: 473500

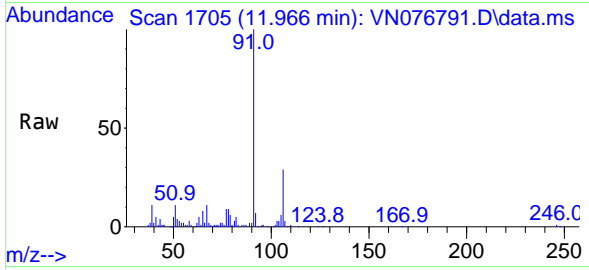
Ion	Ratio	Lower	Upper
117	100		
82	55.4	43.4	65.2
119	32.0	26.1	39.1



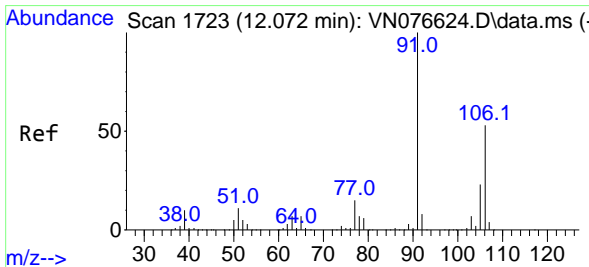
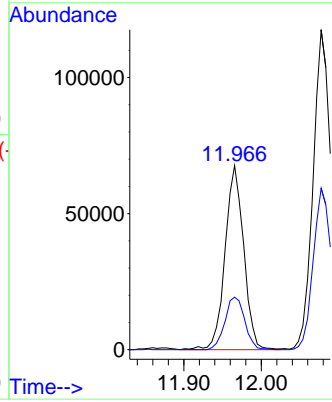
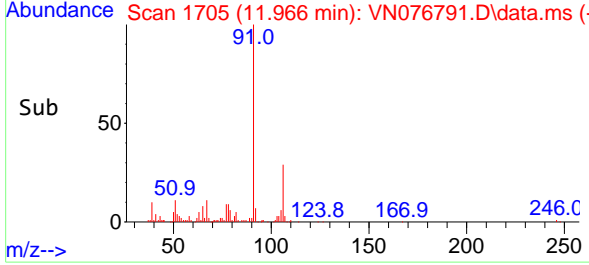


#67  
 Ethyl Benzene  
 Concen: 6.629 ug/l  
 RT: 11.966 min Scan# 1705  
 Delta R.T. -0.000 min  
 Lab File: VN076791.D  
 Acq: 23 Feb 2023 14:10

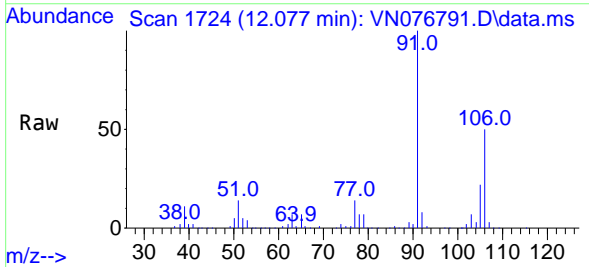
Instrument : MSVOA\_N  
 ClientSampleId : MW-10-0222



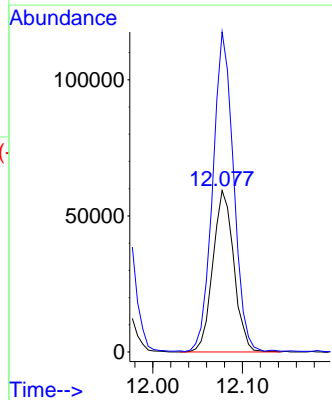
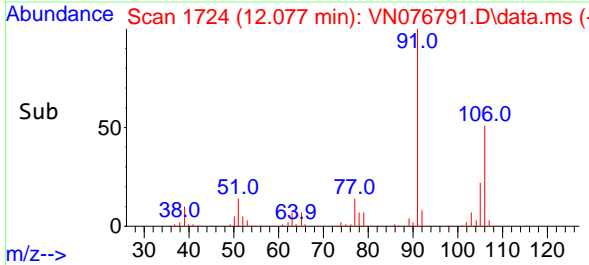
Tgt Ion: 91 Resp: 113328  
 Ion Ratio Lower Upper  
 91 100  
 106 28.5 25.1 37.7

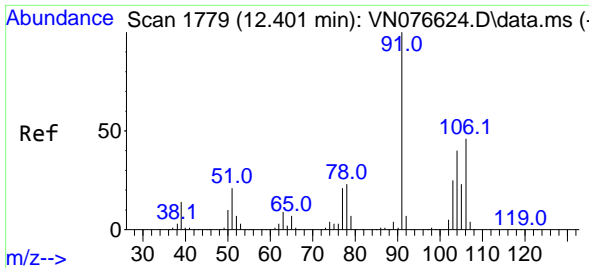


#68  
 m/p-Xylenes  
 Concen: 14.622 ug/l  
 RT: 12.077 min Scan# 1724  
 Delta R.T. 0.005 min  
 Lab File: VN076791.D  
 Acq: 23 Feb 2023 14:10



Tgt Ion: 106 Resp: 96356  
 Ion Ratio Lower Upper  
 106 100  
 91 196.1 154.7 232.1

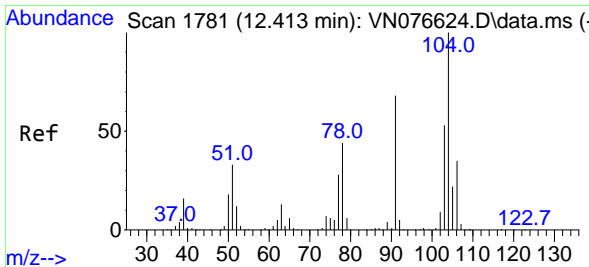
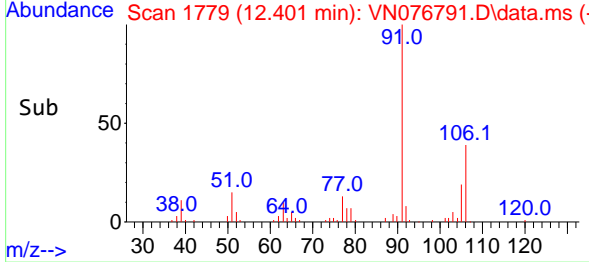
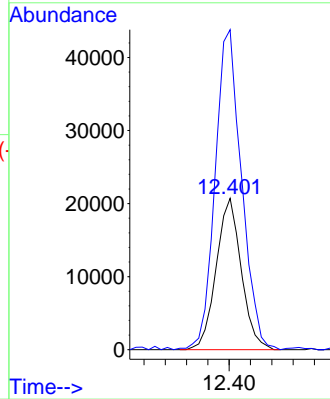
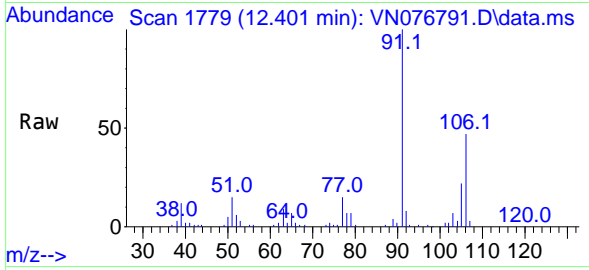




#69  
 o-Xylene  
 Concen: 5.264 ug/l  
 RT: 12.401 min Scan# 11  
 Delta R.T. -0.000 min  
 Lab File: VN076791.D  
 Acq: 23 Feb 2023 14:10

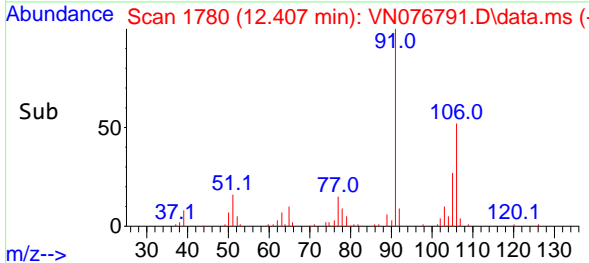
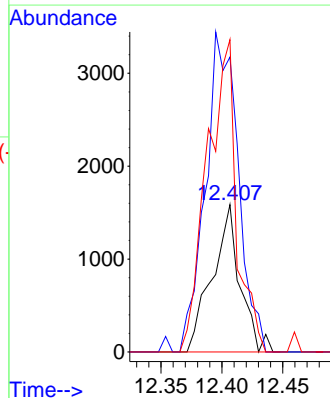
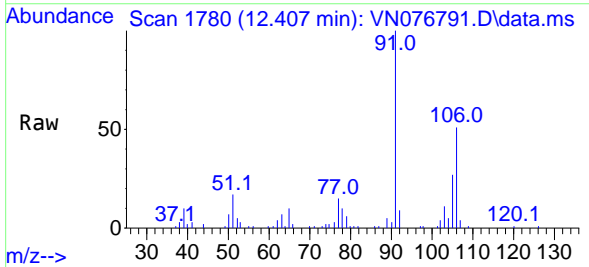
Instrument : MSVOA\_N  
 ClientSampleId : MW-10-0222

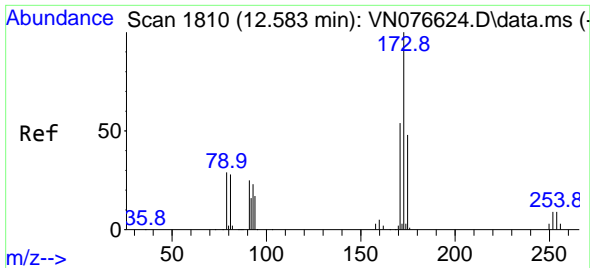
Tgt Ion:106 Resp: 33830  
 Ion Ratio Lower Upper  
 106 100  
 91 222.5 105.8 317.4



#70  
 Styrene  
 Concen: 0.243 ug/l  
 RT: 12.407 min Scan# 1780  
 Delta R.T. -0.006 min  
 Lab File: VN076791.D  
 Acq: 23 Feb 2023 14:10

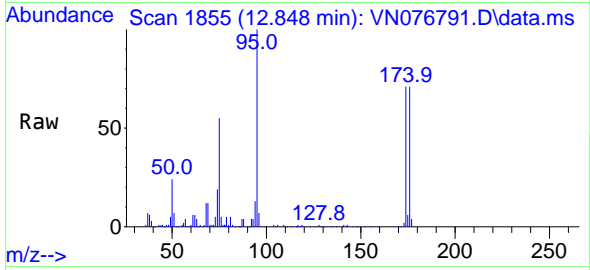
Tgt Ion:104 Resp: 2524  
 Ion Ratio Lower Upper  
 104 100  
 78 257.3 38.2 57.4#  
 103 224.5 44.2 66.4#



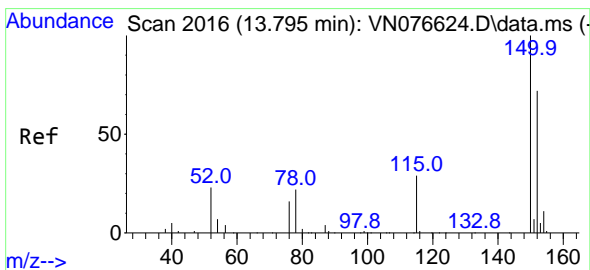
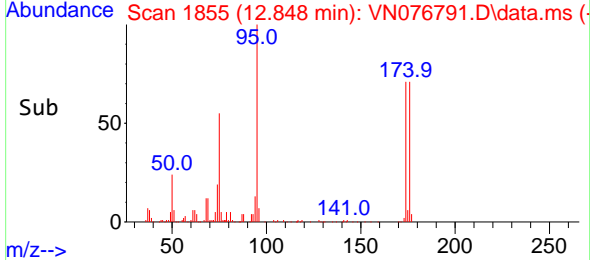
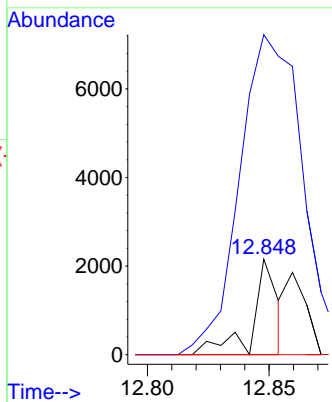


#71  
 Bromoform  
 Concen: 0.580 ug/l  
 RT: 12.848 min Scan# 1810  
 Delta R.T. 0.265 min  
 Lab File: VN076791.D  
 Acq: 23 Feb 2023 14:10

Instrument : MSVOA\_N  
 ClientSampleId : MW-10-0222

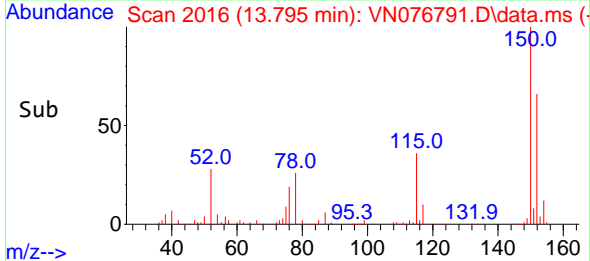
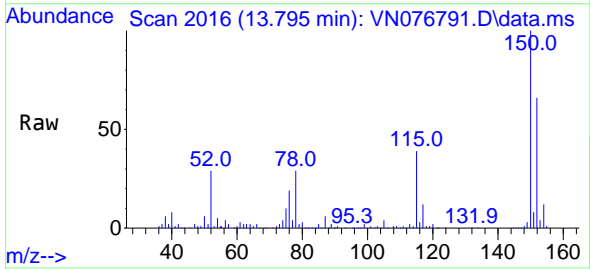
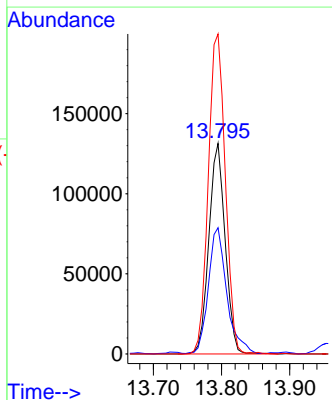


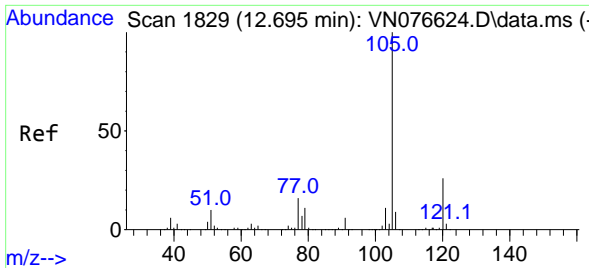
Tgt Ion:173 Resp: 1551  
 Ion Ratio Lower Upper  
 173 100  
 175 714.2 24.9 74.7#  
 254 0.0 0.1 0.1#



#72  
 1,4-Dichlorobenzene-d4  
 Concen: 50.000 ug/l  
 RT: 13.795 min Scan# 2016  
 Delta R.T. -0.000 min  
 Lab File: VN076791.D  
 Acq: 23 Feb 2023 14:10

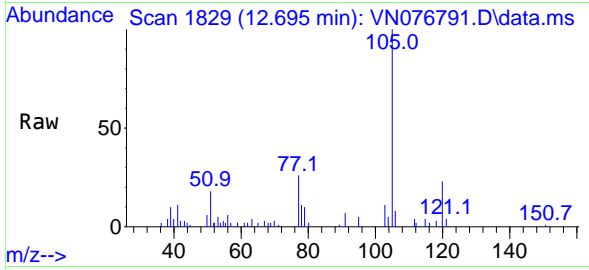
Tgt Ion:152 Resp: 218900  
 Ion Ratio Lower Upper  
 152 100  
 115 67.6 29.3 87.9  
 150 158.8 0.0 349.8



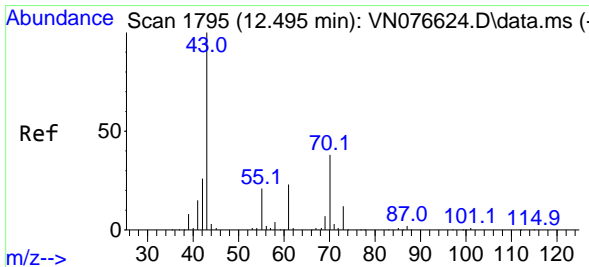
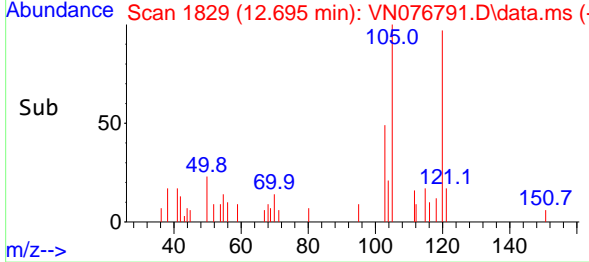
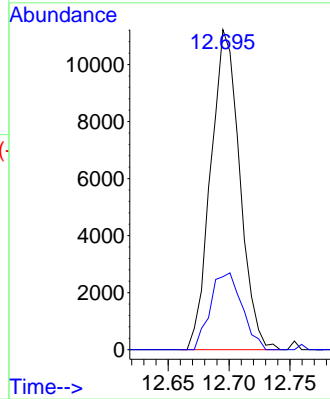


#73  
 Isopropylbenzene  
 Concen: 1.160 ug/l  
 RT: 12.695 min Scan# 1829  
 Delta R.T. -0.000 min  
 Lab File: VN076791.D  
 Acq: 23 Feb 2023 14:10

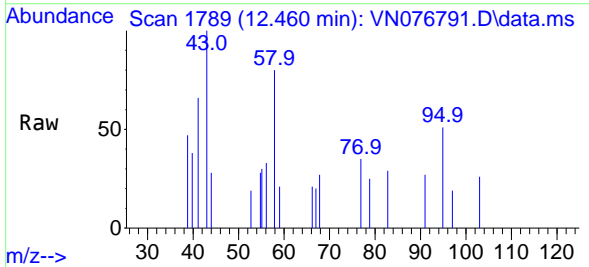
Instrument : MSVOA\_N  
 ClientSampleId : MW-10-0222



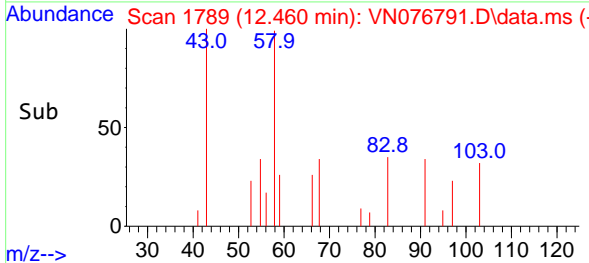
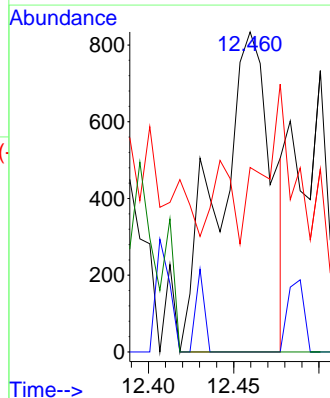
Tgt Ion:105 Resp: 18608  
 Ion Ratio Lower Upper  
 105 100  
 120 26.2 13.7 41.0

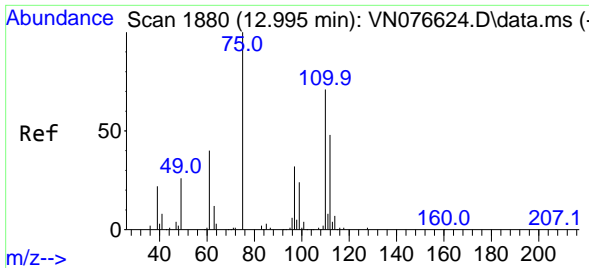


#74  
 N-ethyl acetate  
 Concen: 0.248 ug/l  
 RT: 12.460 min Scan# 1789  
 Delta R.T. -0.035 min  
 Lab File: VN076791.D  
 Acq: 23 Feb 2023 14:10



Tgt Ion: 43 Resp: 1791  
 Ion Ratio Lower Upper  
 43 100  
 70 0.0 30.5 45.7#  
 55 0.0 17.8 26.8#  
 61 0.0 17.8 26.8#

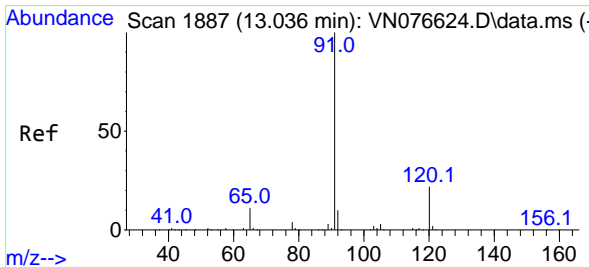
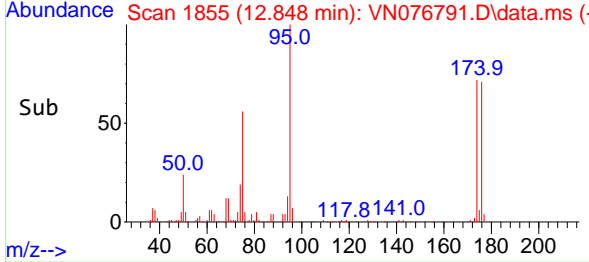
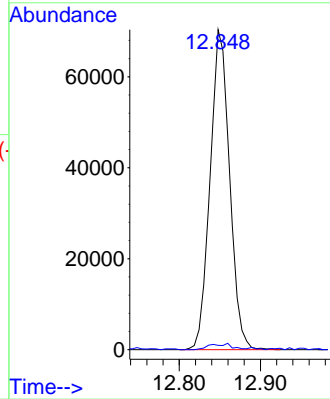
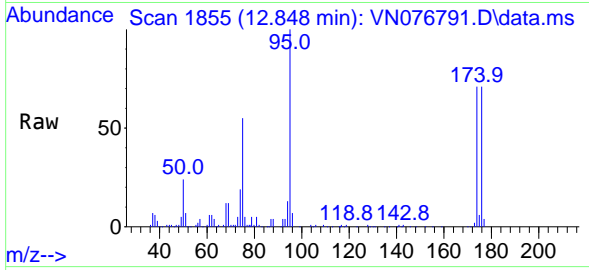




#76  
 1,2,3-Trichloropropane  
 Concen: 26.472 ug/l  
 RT: 12.848 min Scan# 1855  
 Delta R.T. -0.147 min  
 Lab File: VN076791.D  
 Acq: 23 Feb 2023 14:10

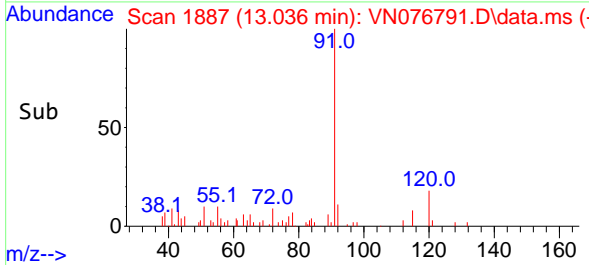
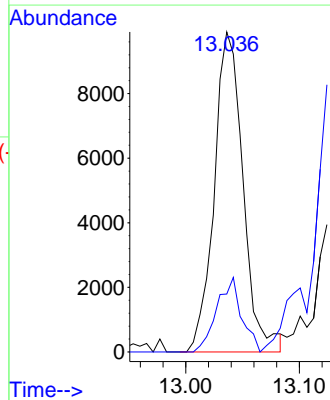
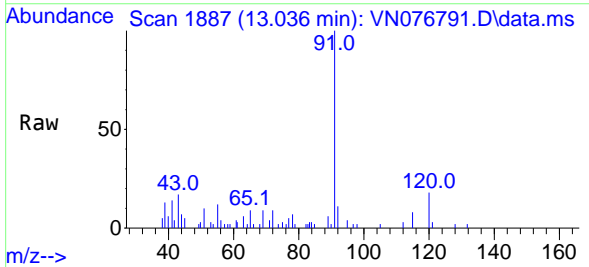
Instrument : MSVOA\_N  
 ClientSampleId : MW-10-0222

Tgt Ion: 75 Resp: 117151  
 Ion Ratio Lower Upper  
 75 100  
 77 2.2 93.1 279.3#

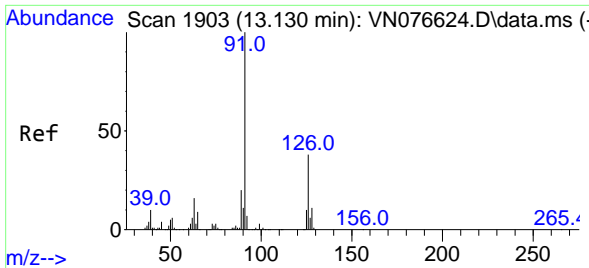


#78  
 n-propylbenzene  
 Concen: 0.928 ug/l  
 RT: 13.036 min Scan# 1887  
 Delta R.T. 0.000 min  
 Lab File: VN076791.D  
 Acq: 23 Feb 2023 14:10

Tgt Ion: 91 Resp: 17483  
 Ion Ratio Lower Upper  
 91 100  
 120 0.0 11.5 34.5#



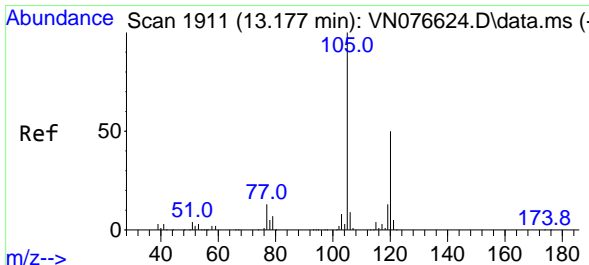
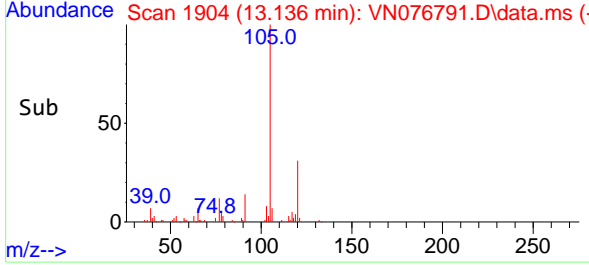
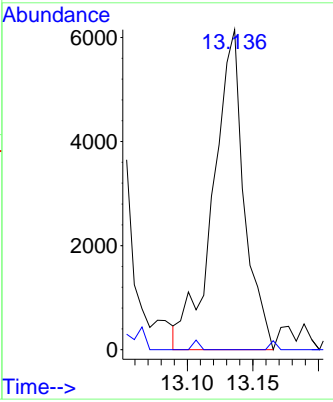
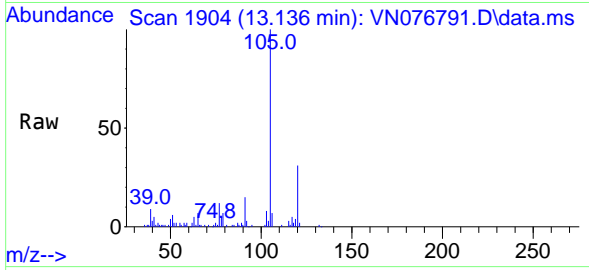




#79  
 2-Chlorotoluene  
 Concen: 0.873 ug/l  
 RT: 13.136 min Scan# 1903  
 Delta R.T. 0.006 min  
 Lab File: VN076791.D  
 Acq: 23 Feb 2023 14:10

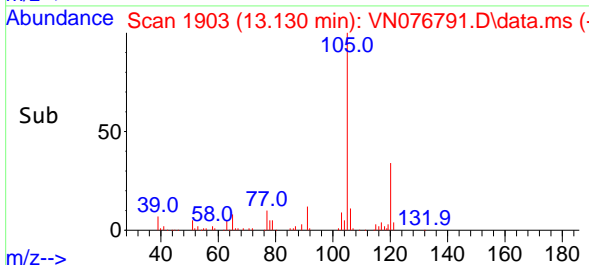
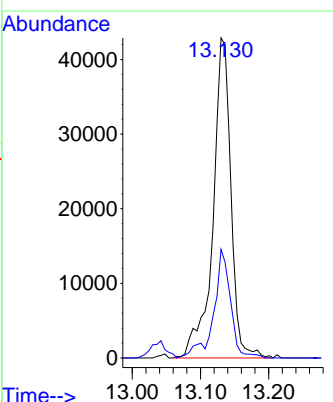
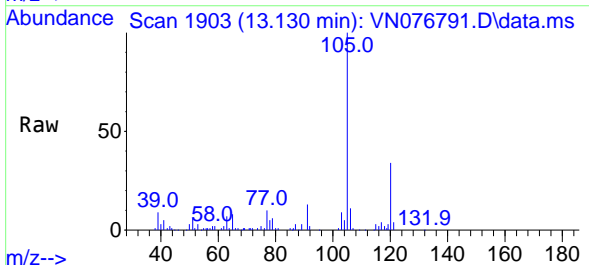
Instrument : MSVOA\_N  
 ClientSampleId : MW-10-0222

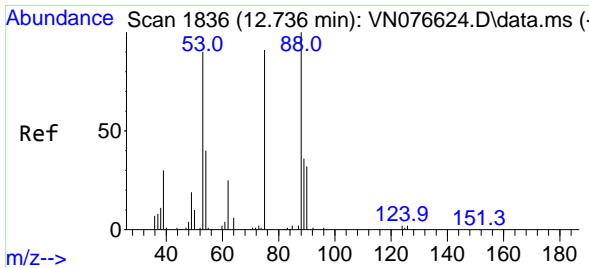
Tgt Ion: 91 Resp: 10074  
 Ion Ratio Lower Upper  
 91 100  
 126 0.0 17.7 53.1#



#80  
 1,3,5-Trimethylbenzene  
 Concen: 5.955 ug/l  
 RT: 13.130 min Scan# 1903  
 Delta R.T. -0.047 min  
 Lab File: VN076791.D  
 Acq: 23 Feb 2023 14:10

Tgt Ion: 105 Resp: 78964  
 Ion Ratio Lower Upper  
 105 100  
 120 31.8 25.1 75.4

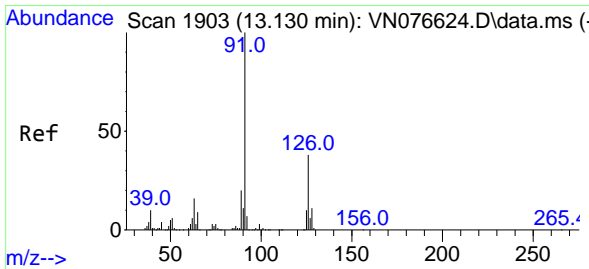
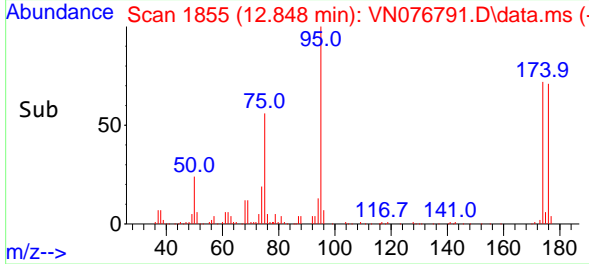
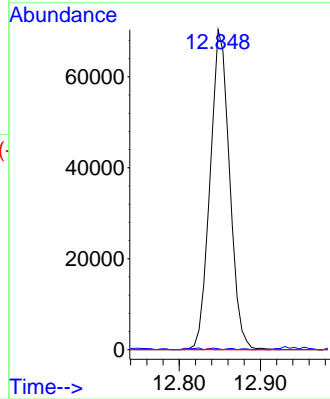
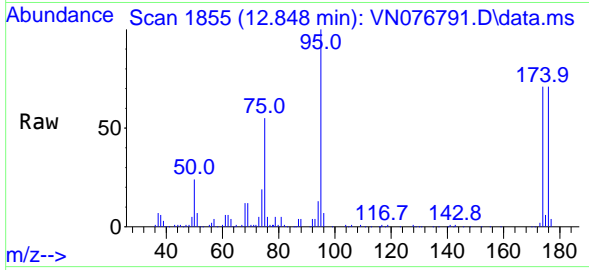




#81  
 trans-1,4-Dichloro-2-butene  
 Concen: 77.100 ug/l  
 RT: 12.848 min Scan# 11  
 Delta R.T. 0.112 min  
 Lab File: VN076791.D  
 Acq: 23 Feb 2023 14:10

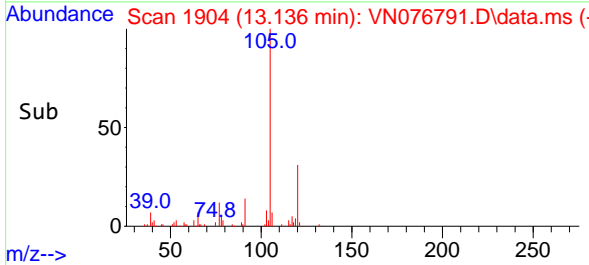
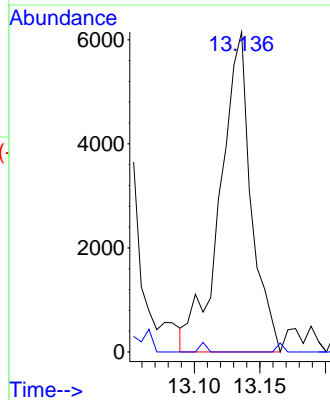
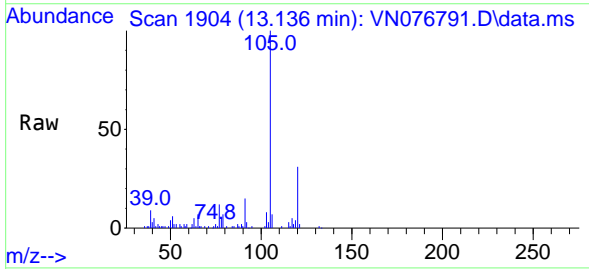
Instrument :  
 MSVOA\_N  
 ClientSampleId :  
 MW-10-0222

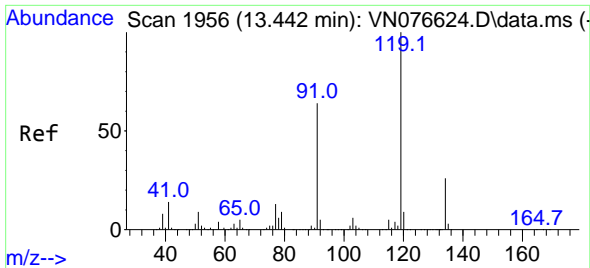
Tgt Ion: 75 Resp: 117151  
 Ion Ratio Lower Upper  
 75 100  
 53 0.2 92.1 138.1#  
 89 0.1 37.5 56.3#



#82  
 4-Chlorotoluene  
 Concen: 0.873 ug/l  
 RT: 13.136 min Scan# 1904  
 Delta R.T. 0.006 min  
 Lab File: VN076791.D  
 Acq: 23 Feb 2023 14:10

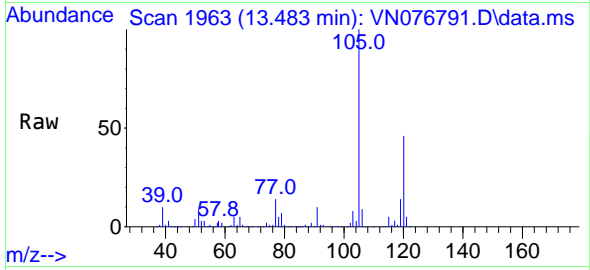
Tgt Ion: 91 Resp: 10074  
 Ion Ratio Lower Upper  
 91 100  
 126 0.0 17.7 53.1#



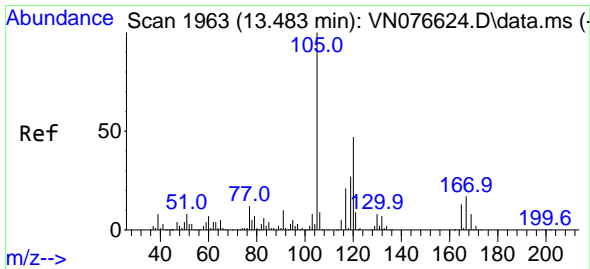
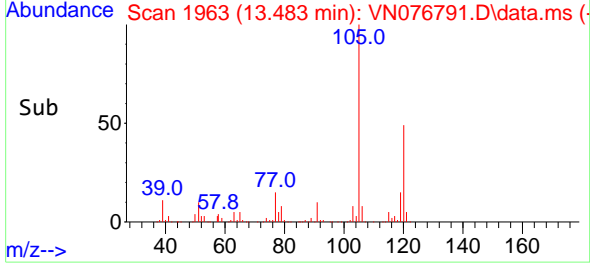
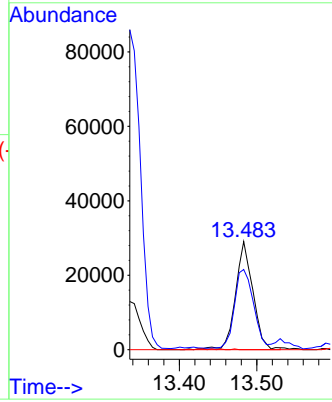


#83  
 tert-Butylbenzene  
 Concen: 3.782 ug/l  
 RT: 13.483 min Scan# 1963  
 Delta R.T. 0.041 min  
 Lab File: VN076791.D  
 Acq: 23 Feb 2023 14:10

Instrument : MSVOA\_N  
 ClientSampleId : MW-10-0222

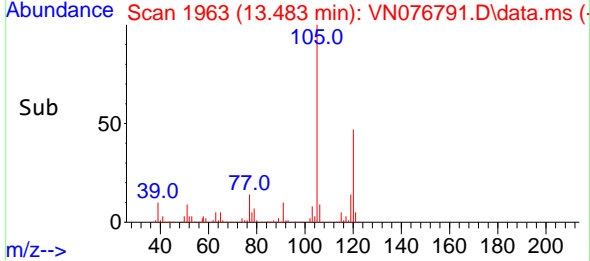
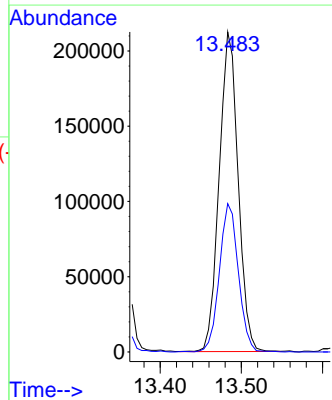
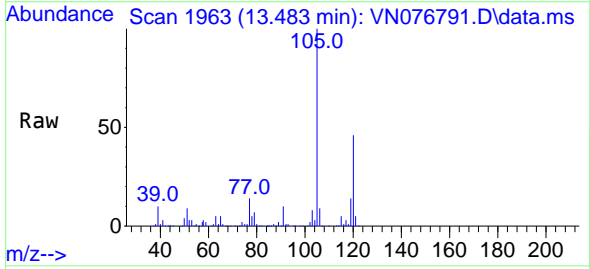


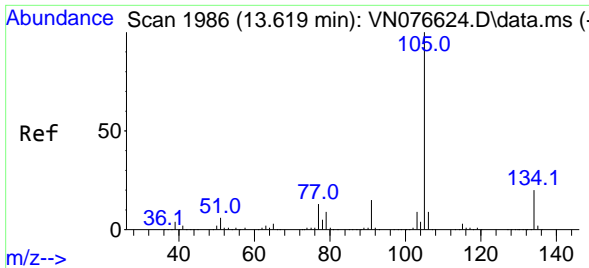
Tgt Ion:119 Resp: 45368  
 Ion Ratio Lower Upper  
 119 100  
 91 79.6 32.0 96.2  
 134 0.0 13.8 41.4#



#84  
 1,2,4-Trimethylbenzene  
 Concen: 26.059 ug/l  
 RT: 13.483 min Scan# 1963  
 Delta R.T. 0.000 min  
 Lab File: VN076791.D  
 Acq: 23 Feb 2023 14:10

Tgt Ion:105 Resp: 344375  
 Ion Ratio Lower Upper  
 105 100  
 120 46.6 23.0 69.0

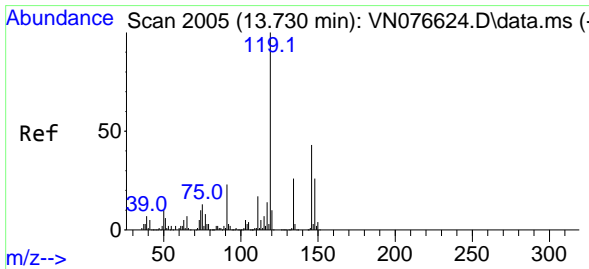
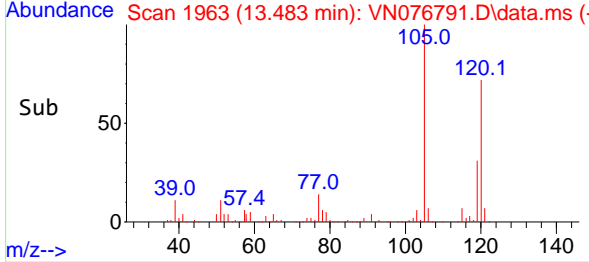
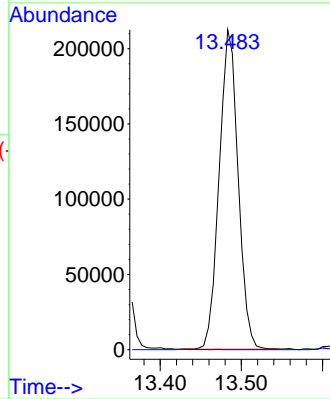
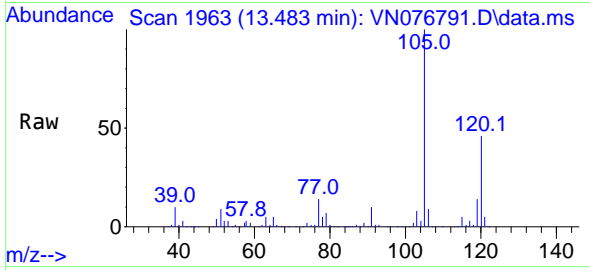




#85  
 sec-Butylbenzene  
 Concen: 20.541 ug/l  
 RT: 13.483 min Scan# 1986  
 Delta R.T. -0.136 min  
 Lab File: VN076791.D  
 Acq: 23 Feb 2023 14:10

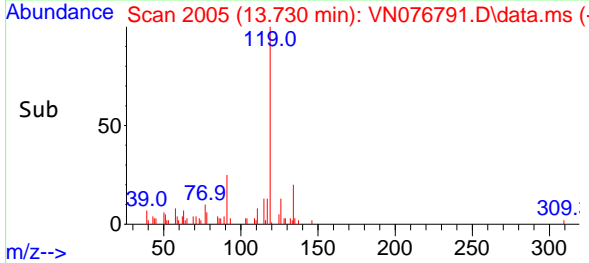
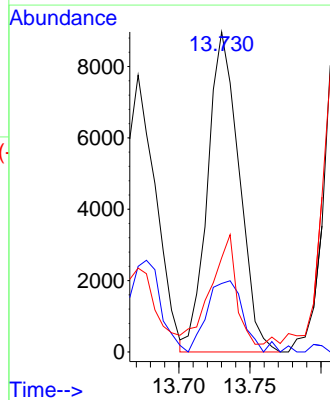
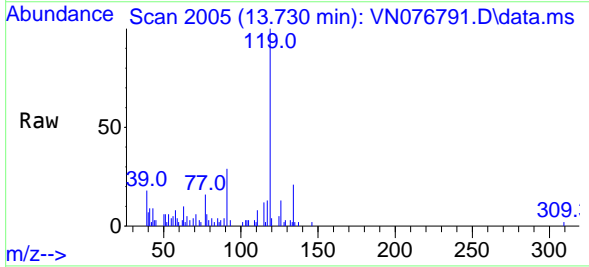
Instrument : MSVOA\_N  
 ClientSampleId : MW-10-0222

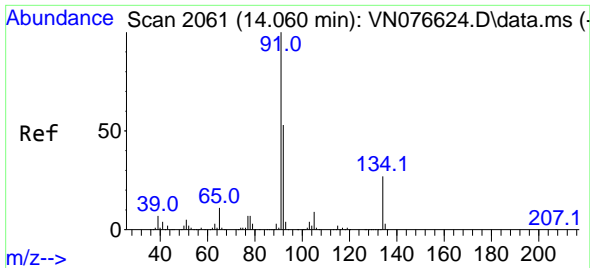
Tgt Ion:105 Resp: 344012  
 Ion Ratio Lower Upper  
 105 100  
 134 0.0 10.5 31.5#



#86  
 p-Isopropyltoluene  
 Concen: 1.033 ug/l  
 RT: 13.730 min Scan# 2005  
 Delta R.T. 0.000 min  
 Lab File: VN076791.D  
 Acq: 23 Feb 2023 14:10

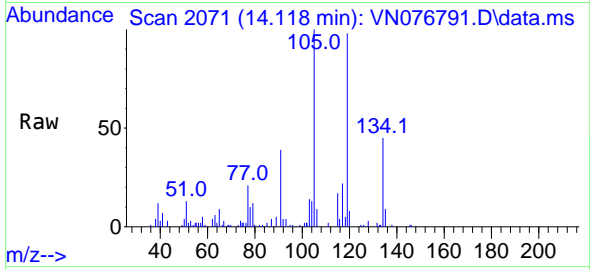
Tgt Ion:119 Resp: 13821  
 Ion Ratio Lower Upper  
 119 100  
 134 26.1 13.4 40.1  
 91 27.0 11.7 35.0



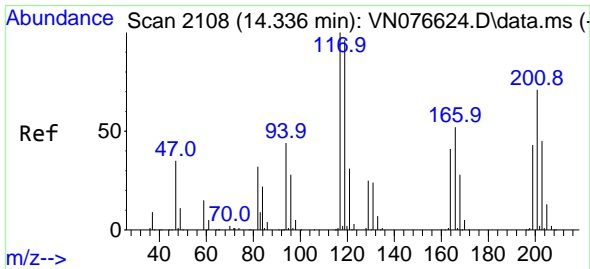
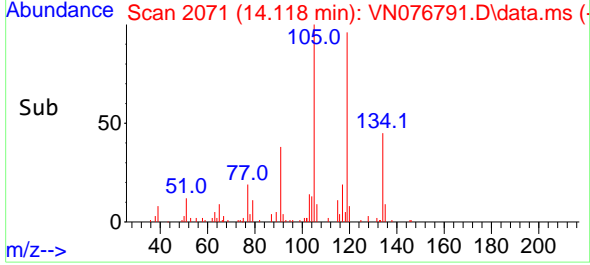
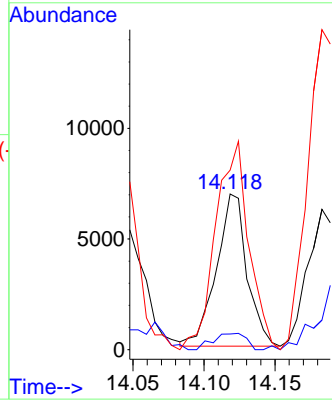


#89  
 n-Butylbenzene  
 Concen: 0.886 ug/l  
 RT: 14.118 min Scan# 2061  
 Delta R.T. 0.058 min  
 Lab File: VN076791.D  
 Acq: 23 Feb 2023 14:10

Instrument :  
 MSVOA\_N  
 ClientSampleId :  
 MW-10-0222

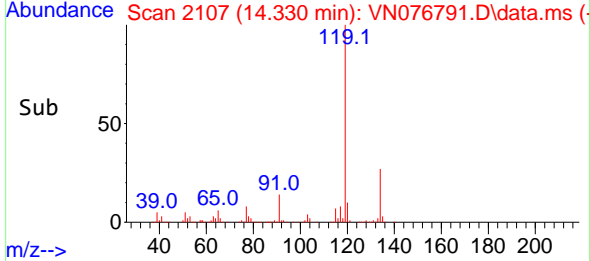
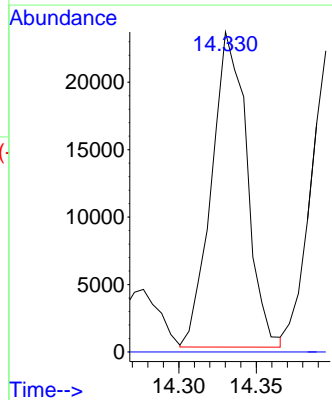
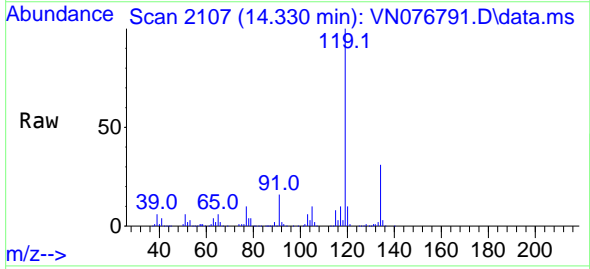


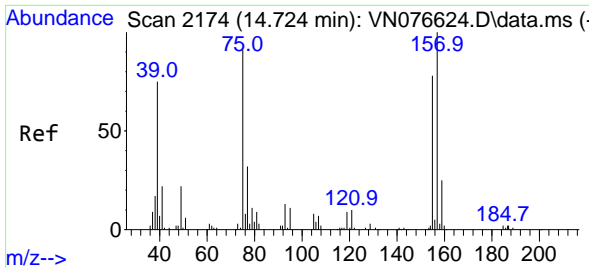
Tgt Ion: 91 Resp: 10310  
 Ion Ratio Lower Upper  
 91 100  
 92 11.6 26.4 79.0#  
 134 148.4 13.2 39.5#



#90  
 Hexachloroethane  
 Concen: 13.220 ug/l  
 RT: 14.330 min Scan# 2107  
 Delta R.T. -0.006 min  
 Lab File: VN076791.D  
 Acq: 23 Feb 2023 14:10

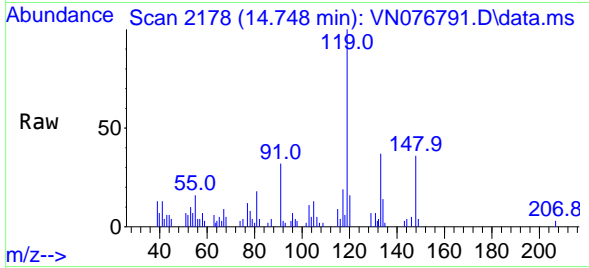
Tgt Ion: 117 Resp: 37017  
 Ion Ratio Lower Upper  
 117 100  
 201 0.0 35.5 106.7#





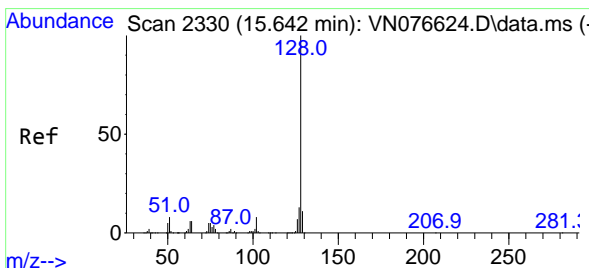
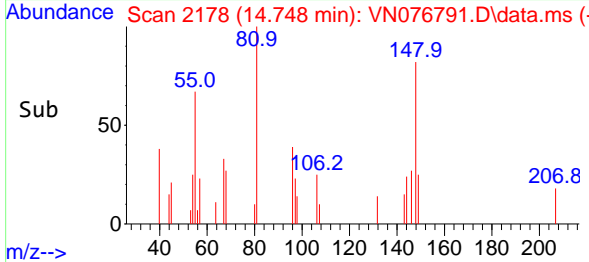
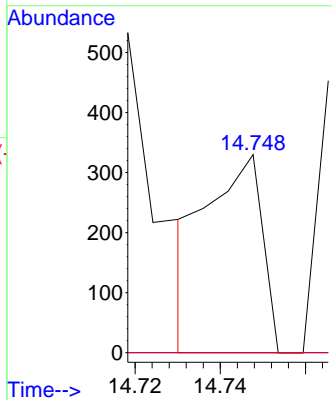
#92  
 1,2-Dibromo-3-Chloropropane  
 Concen: 0.263 ug/l  
 RT: 14.748 min Scan# 2178  
 Delta R.T. 0.024 min  
 Lab File: VN076791.D  
 Acq: 23 Feb 2023 14:10

Instrument : MSVOA\_N  
 ClientSampleId : MW-10-0222



Tgt Ion: 75 Resp: 296

Ion	Ratio	Lower	Upper
75	100		
155	0.0	43.4	130.2#
157	0.0	55.2	165.6#



#95  
 Naphthalene  
 Concen: 5.191 ug/l  
 RT: 15.642 min Scan# 2330  
 Delta R.T. -0.000 min  
 Lab File: VN076791.D  
 Acq: 23 Feb 2023 14:10

Tgt Ion: 128 Resp: 60956

Ion	Ratio	Lower	Upper
128	100		
127	15.0	10.6	16.0
129	14.6	8.6	13.0#

