

Data Path : Z:\voasrv\HPCHEM1\MSVOA_N\Data\VN022421\
 Data File : VN066014.D
 Acq On : 24 Feb 2021 19:15
 Operator : JC/MD
 Sample : M1474-04
 Misc : 5.00mL/MSVOA_N/WATER
 ALS Vial : 24 Sample Multiplier: 1

Instrument :
 MSVOA_N
 ClientSampleId :
 BP-TT-VPB-RW6-GW-638-640

Quant Time: Feb 25 02:17:18 2021
 Quant Method : Z:\voasrv\HPCHEM1\MSVOA_N\methods\82N021721W.M
 Quant Title : SW846 8260
 QLast Update : Wed Feb 17 15:48:13 2021
 Response via : Initial Calibration

Compound	R.T.	QIon	Response	Conc	Units	Dev(Min)

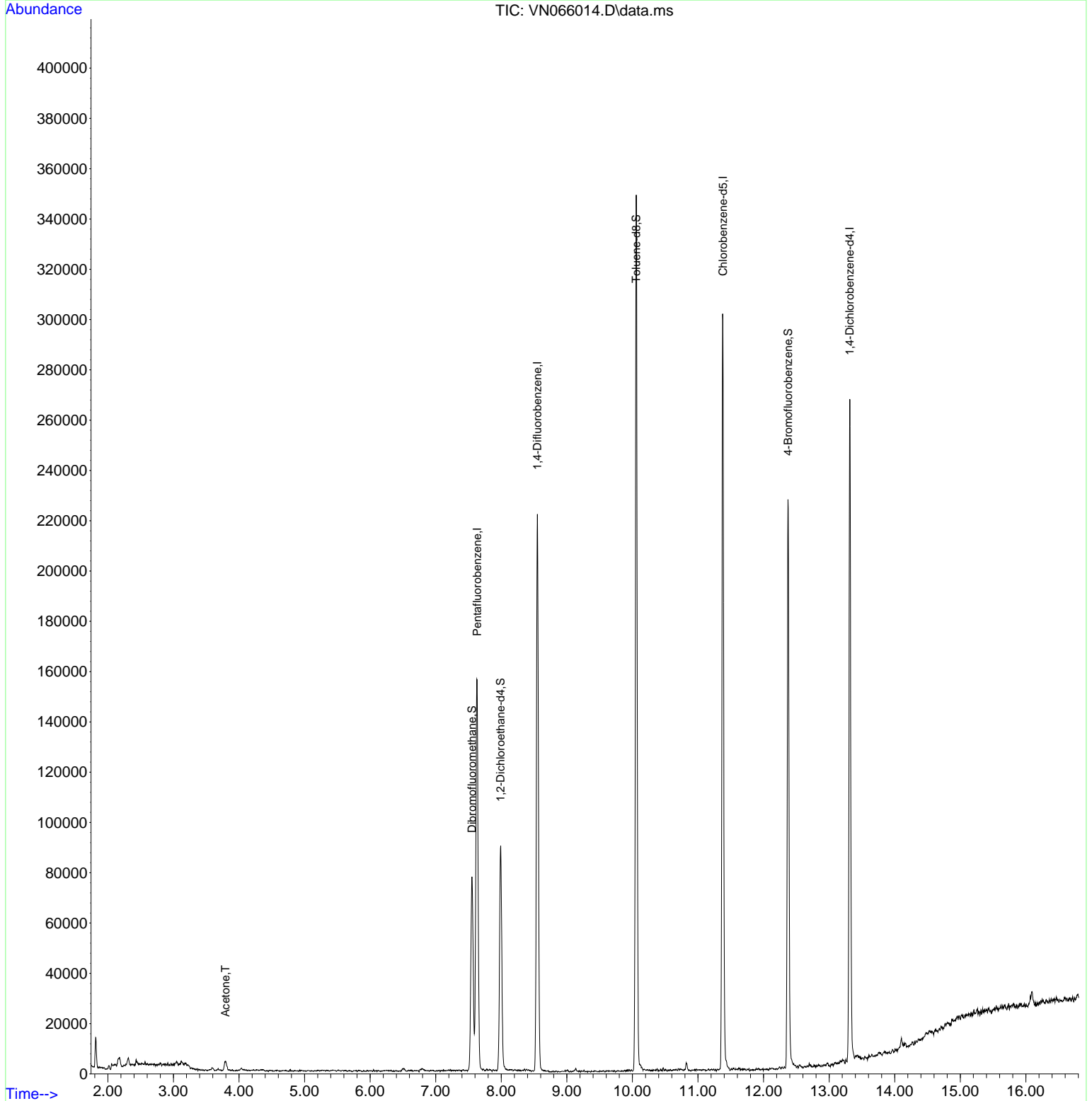
Internal Standards						
1) Pentafluorobenzene	7.631	168	124312	50.00	ug/l	0.00
34) 1,4-Difluorobenzene	8.550	114	202397	50.00	ug/l	0.00
63) Chlorobenzene-d5	11.380	117	183983	50.00	ug/l	0.00
72) 1,4-Dichlorobenzene-d4	13.315	152	74551	50.00	ug/l	0.00
System Monitoring Compounds						
33) 1,2-Dichloroethane-d4	7.991	65	83085	47.79	ug/l	0.00
Spiked Amount	50.000	Range 61 - 141	Recovery	=	95.58%	
35) Dibromofluoromethane	7.553	113	60719	48.47	ug/l	0.00
Spiked Amount	50.000	Range 69 - 133	Recovery	=	96.94%	
50) Toluene-d8	10.058	98	243517	47.36	ug/l	0.00
Spiked Amount	50.000	Range 65 - 126	Recovery	=	94.72%	
62) 4-Bromofluorobenzene	12.373	95	89815	46.53	ug/l	0.00
Spiked Amount	50.000	Range 58 - 135	Recovery	=	93.06%	
Target Compounds						
16) Acetone	3.795	43	7070	11.42	ug/l #	Qvalue 86

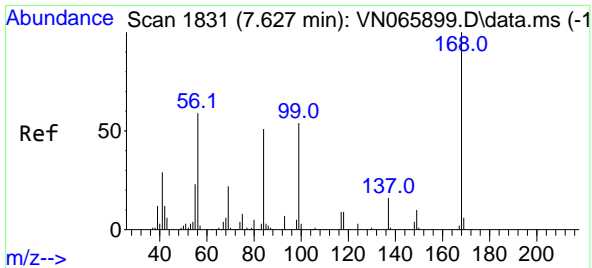
(#) = qualifier out of range (m) = manual integration (+) = signals summed

Data Path : Z:\voasrv\HPCHEM1\MSVOA_N\Data\VN022421\
 Data File : VN066014.D
 Acq On : 24 Feb 2021 19:15
 Operator : JC/MD
 Sample : M1474-04
 Misc : 5.00mL/MSVOA_N/WATER
 ALS Vial : 24 Sample Multiplier: 1

Instrument :
 MSVOA_N
ClientSampleId :
 BP-TT-VPB-RW6-GW-638-640

Quant Time: Feb 25 02:17:18 2021
 Quant Method : Z:\voasrv\HPCHEM1\MSVOA_N\methods\82N021721W.M
 Quant Title : SW846 8260
 QLast Update : Wed Feb 17 15:48:13 2021
 Response via : Initial Calibration

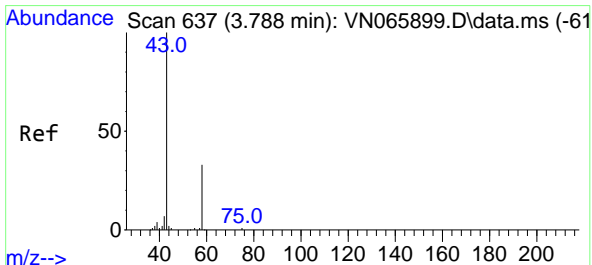
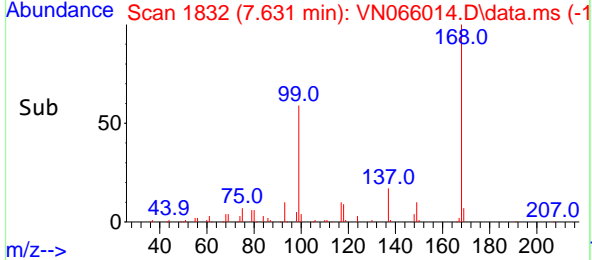
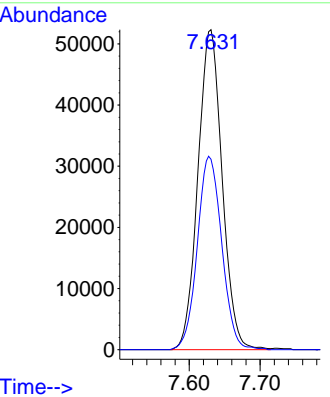
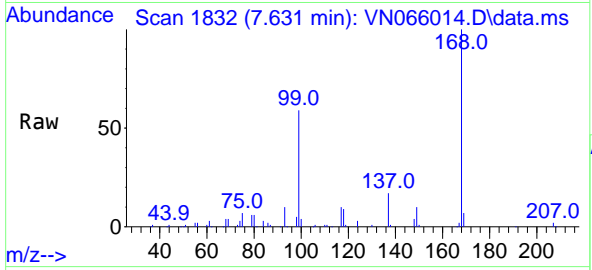




#1
 Pentafluorobenzene
 Concen: 50.00 ug/l
 RT: 7.631 min Scan# 1832
 Delta R.T. 0.004 min
 Lab File: VN066014.D
 Acq: 24 Feb 2021 19:15

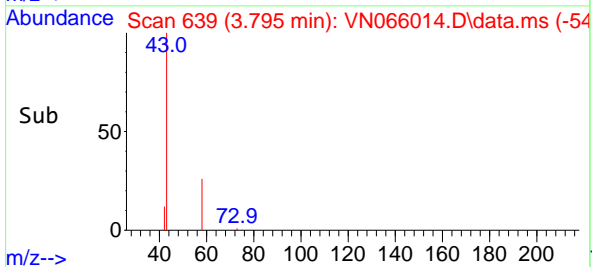
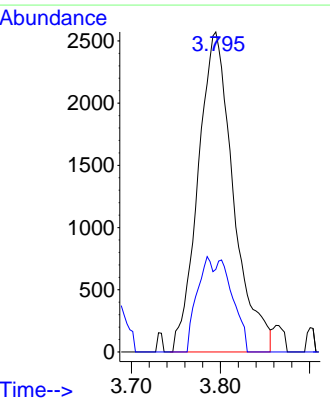
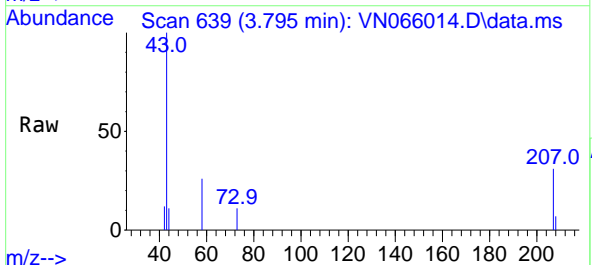
Instrument :
 MSVOA_N
 ClientSampleId :
 BP-TT-VPB-RW6-GW-638-640

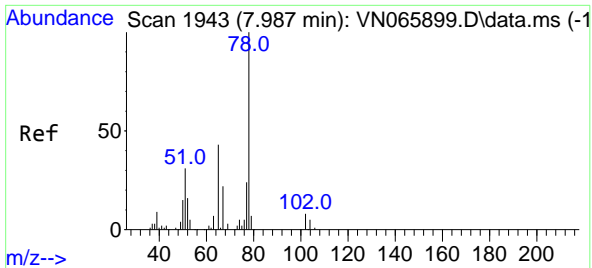
Tgt Ion:168 Resp: 124312
 Ion Ratio Lower Upper
 168 100
 99 59.5 42.6 63.8



#16
 Acetone
 Concen: 11.42 ug/l
 RT: 3.795 min Scan# 639
 Delta R.T. 0.007 min
 Lab File: VN066014.D
 Acq: 24 Feb 2021 19:15

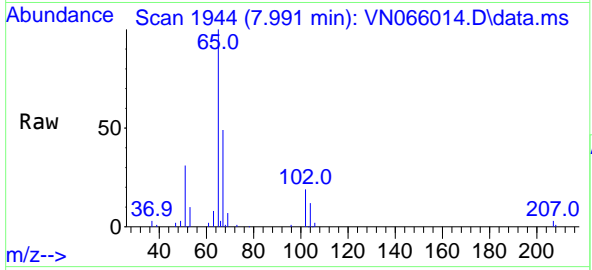
Tgt Ion: 43 Resp: 7070
 Ion Ratio Lower Upper
 43 100
 58 25.8 27.0 40.6#



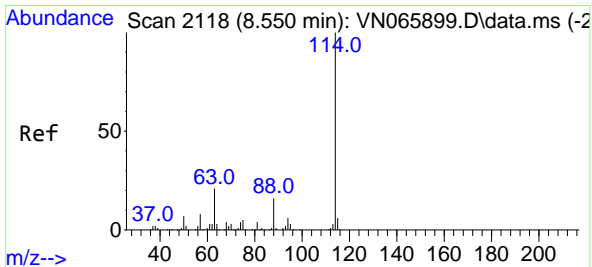
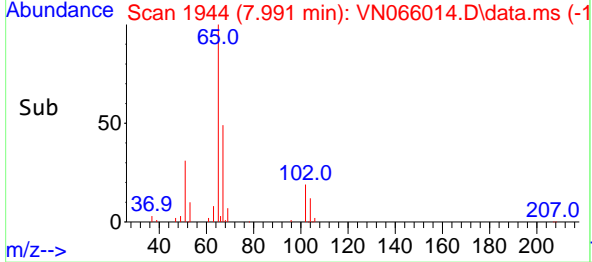
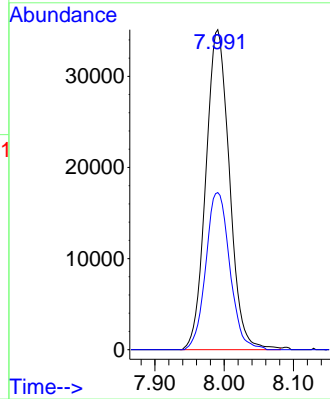


#33
 1,2-Dichloroethane-d4
 Concen: 47.79 ug/l
 RT: 7.991 min Scan# 1944
 Delta R.T. 0.004 min
 Lab File: VN066014.D
 Acq: 24 Feb 2021 19:15

Instrument :
 MSVOA_N
 ClientSampleId :
 BP-TT-VPB-RW6-GW-638-640

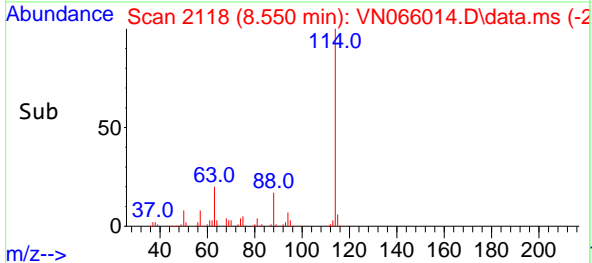
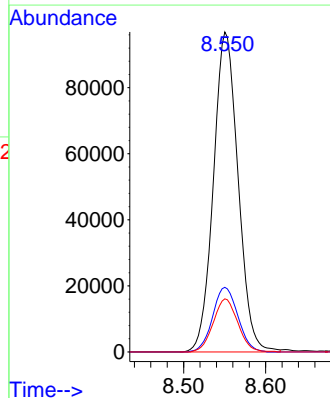
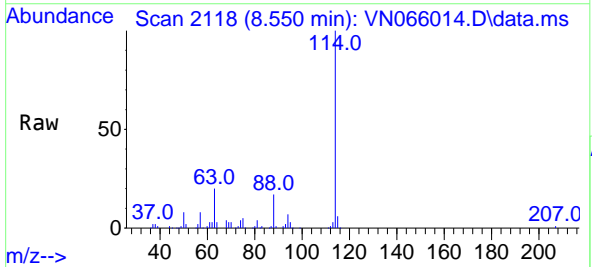


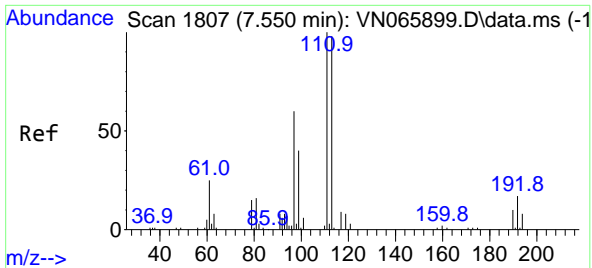
Tgt Ion: 65 Resp: 83085
 Ion Ratio Lower Upper
 65 100
 67 49.9 0.0 107.2



#34
 1,4-Difluorobenzene
 Concen: 50.00 ug/l
 RT: 8.550 min Scan# 2118
 Delta R.T. 0.000 min
 Lab File: VN066014.D
 Acq: 24 Feb 2021 19:15

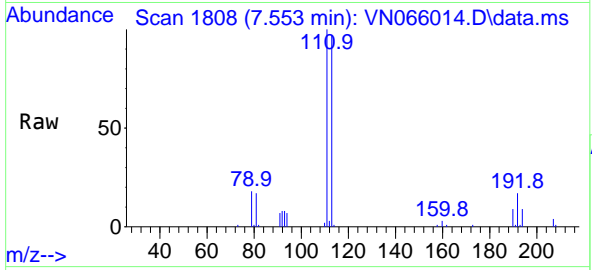
Tgt Ion: 114 Resp: 202397
 Ion Ratio Lower Upper
 114 100
 63 20.2 0.0 38.6
 88 16.6 0.0 30.6



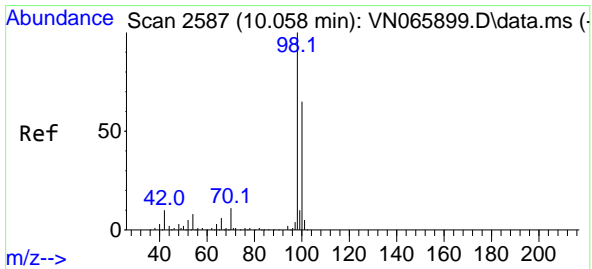
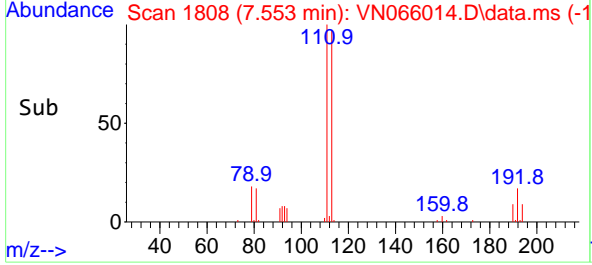
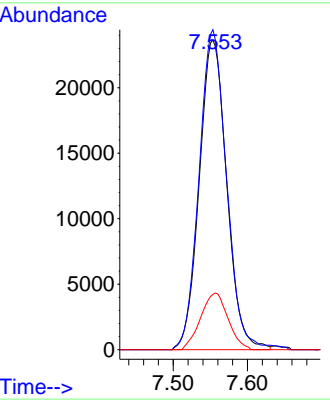


#35
 Dibromofluoromethane
 Concen: 48.47 ug/l
 RT: 7.553 min Scan# 1808
 Delta R.T. 0.003 min
 Lab File: VN066014.D
 Acq: 24 Feb 2021 19:15

Instrument :
 MSVOA_N
ClientSampled :
 BP-TT-VPB-RW6-GW-638-640

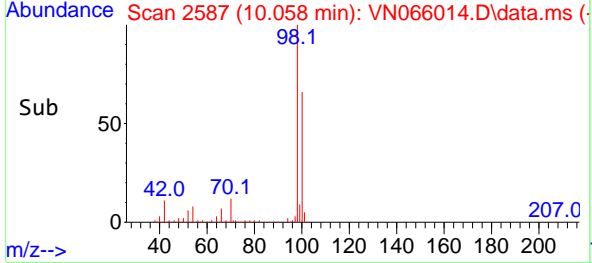
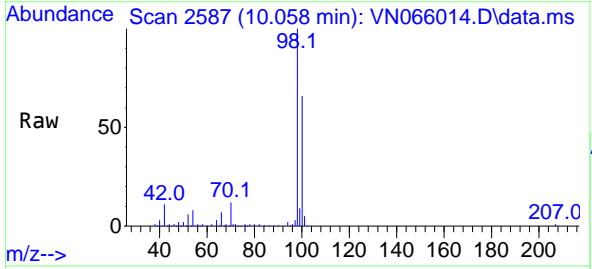
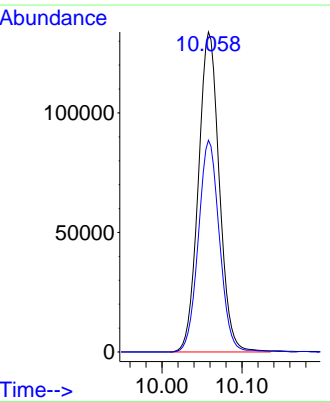


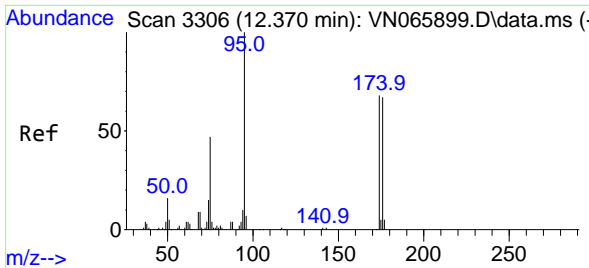
Tgt Ion:113 Resp: 60719
 Ion Ratio Lower Upper
 113 100
 111 103.5 82.2 123.2
 192 18.3 15.4 23.0



#50
 Toluene-d8
 Concen: 47.36 ug/l
 RT: 10.058 min Scan# 2587
 Delta R.T. 0.000 min
 Lab File: VN066014.D
 Acq: 24 Feb 2021 19:15

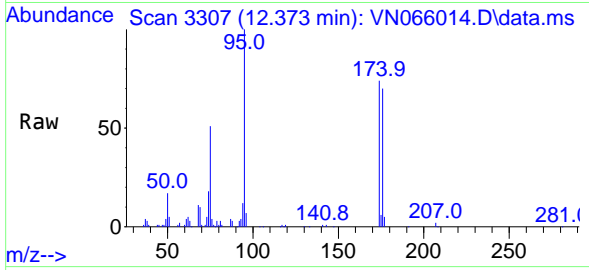
Tgt Ion: 98 Resp: 243517
 Ion Ratio Lower Upper
 98 100
 100 66.8 50.5 75.7



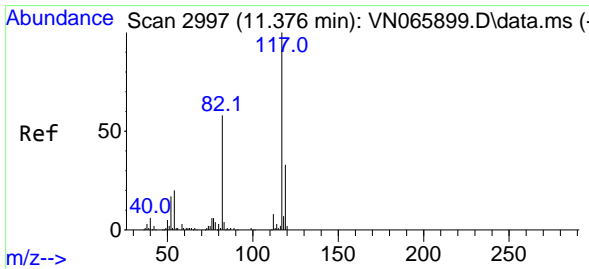
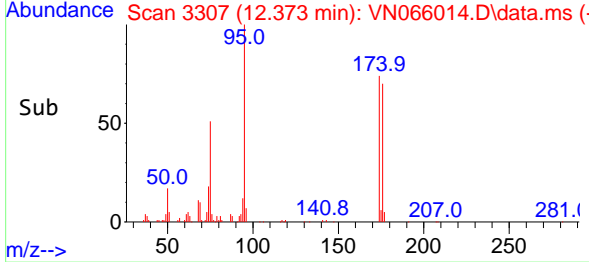
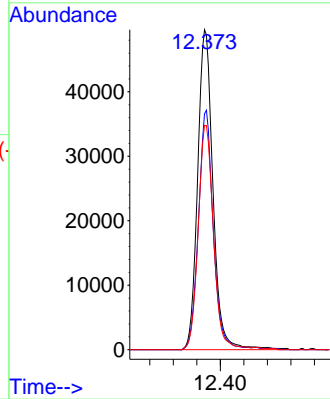


#62
 4-Bromofluorobenzene
 Concen: 46.53 ug/l
 RT: 12.373 min Scan# 3307
 Delta R.T. 0.003 min
 Lab File: VN066014.D
 Acq: 24 Feb 2021 19:15

Instrument :
 MSVOA_N
ClientSampled :
 BP-TT-VPB-RW6-GW-638-640

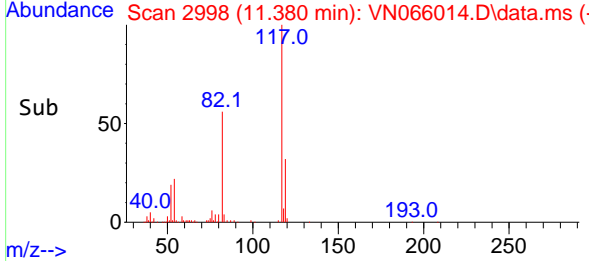
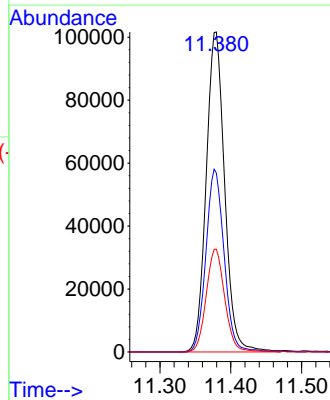
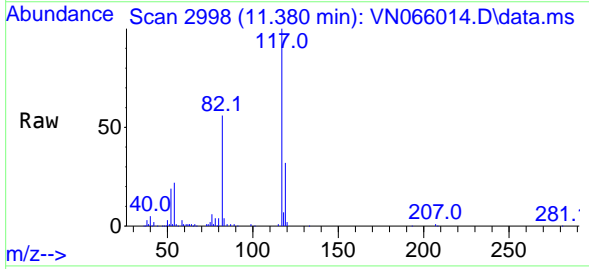


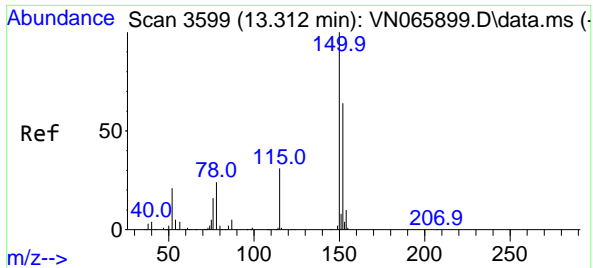
Tgt Ion: 95 Resp: 89815
 Ion Ratio Lower Upper
 95 100
 174 72.4 0.0 169.0
 176 69.6 0.0 162.4



#63
 Chlorobenzene-d5
 Concen: 50.00 ug/l
 RT: 11.380 min Scan# 2998
 Delta R.T. 0.004 min
 Lab File: VN066014.D
 Acq: 24 Feb 2021 19:15

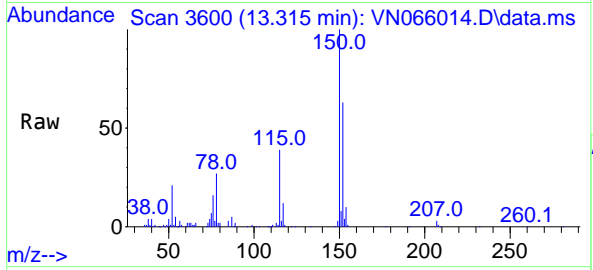
Tgt Ion: 117 Resp: 183983
 Ion Ratio Lower Upper
 117 100
 82 55.9 43.7 65.5
 119 32.1 26.1 39.1





#72
 1,4-Dichlorobenzene-d4
 Concen: 50.00 ug/l
 RT: 13.315 min Scan# 3600
 Delta R.T. 0.003 min
 Lab File: VN066014.D
 Acq: 24 Feb 2021 19:15

Instrument :
 MSVOA_N
ClientSampled :
 BP-TT-VPB-RW6-GW-638-640



Tgt Ion:152 Resp: 74551

Ion	Ratio	Lower	Upper
152	100		
115	63.9	28.5	85.6
150	160.1	0.0	347.6

